



1901 SOUTH LITCHFIELD ROAD  
GOODYEAR, AZ 85338  
PHONE (800) 294-4358  
WWW.COOKSONDOOR.COM

DATE: 2/26/2024  
PROJECT: JEFFERSON PARISH KENNEDY  
LOCATION: ,  
DEALER\*: A.C.E. GARAGE DOOR CO LLC PHONE: 504-231-2132  
ADDRESS: 798 Highway 628  
Laplace, LA 70068  
ATTN: Donald Michler REFERENCE#: E1910734  
Submittal

LEED® RECYCLED CONTENT INFO FOR JOB:

142.0 Lbs. - Total Weight of All Units  
0.0 Lbs., 0.0% - Post Consumer Content  
85.0 Lbs., 59.9% - Post Industrial Content  
85.0 Lbs., 59.9% - Total Recycled Content

---

\* "Dealer" refers to any purchaser, customer, or reseller of CornellCookson products, and not necessarily an authorized CornellCookson dealer.

---



LEED® RECYCLED CONTENT DETAIL

ITEM	TOTAL WEIGHT	POST CONSUMER	%	POST INDUSTRIAL	%	TOTAL RECYCLED	%
1	142 lbs	0 lbs	0.0%	85 lbs	59.9%	85 lbs	59.9%

MOTOR SPECIFICATIONS:

ELECTRICAL EQUIPMENT LIST:

BOTTOM BAR LOCKING:

Type - Slidebolt with padlock hasp (padlock not provided)  
Ø1/4" maximum shank

QUANTITY & MARK:

001 001

Operable Side(s) - Coil only

MATERIAL & FINISH:

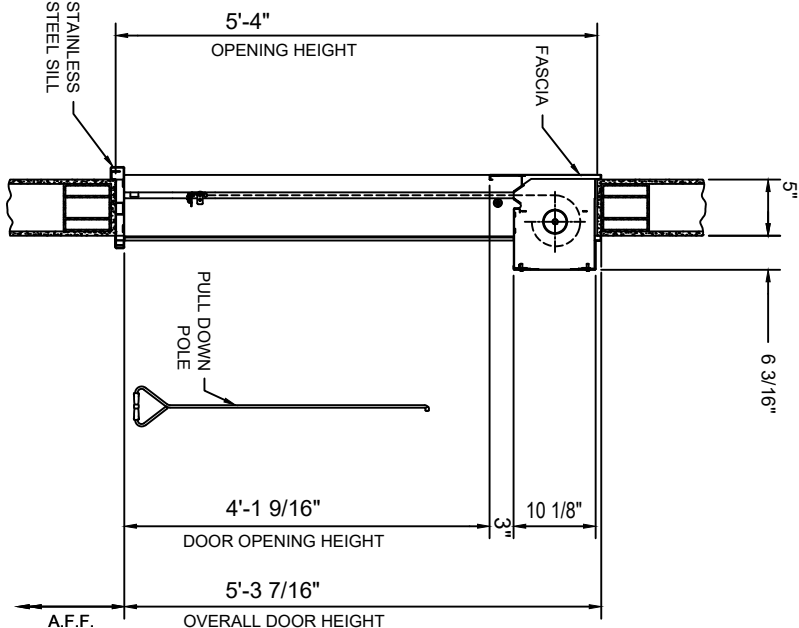
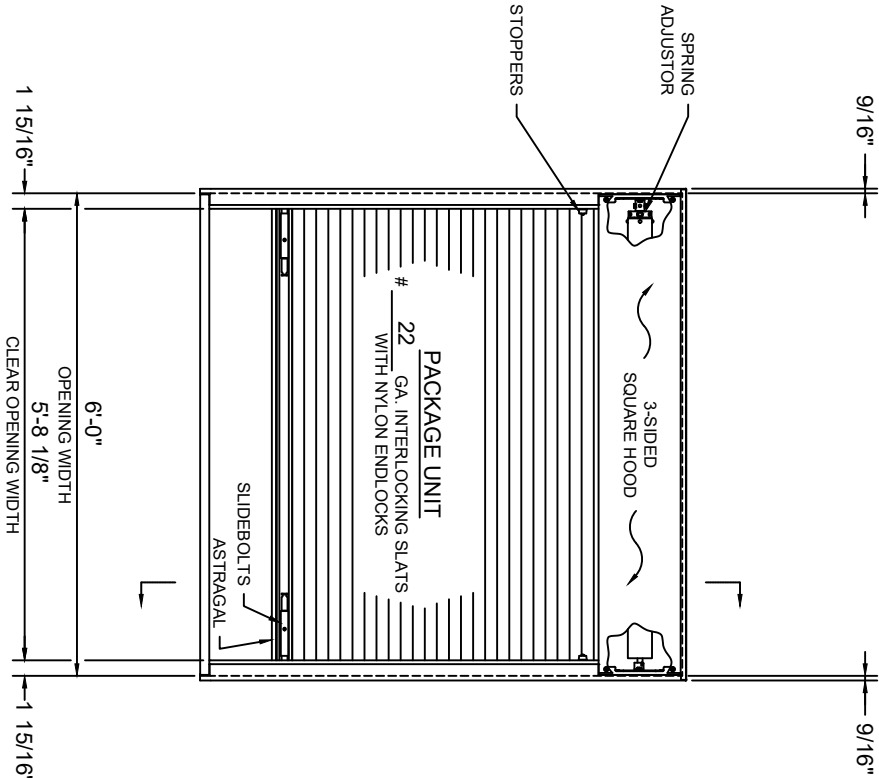
Curtain - Stainless steel, #4 finish

Head/Jambs/Hood/Fascia - Stainless steel, #4 finish

Bottom Bar - Stainless steel, #4 finish

Sill - Stainless steel, #4 finish

Plain Steel - Stainless steel, #4 finish



ELEVATION (COIL SIDE) AND SECTION VIEW

See drawing # E 01910734 001 B for additional details.

12-10-2021	PRODUCT CODE:			MODEL #:	JOB #:
BSE_PURB	PBF1F22S4			ESC20	E 01910734 001 A
				DEALER:	
				A.C.E. GARAGE DOOR CO LLC	
				CONTRACTOR:	
				ARCHITECT:	
---	ORIGINAL DRAWING	02/26/24	WEBENGR		
#	REVISION	DATE	BY		

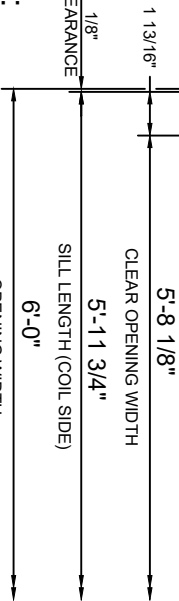
**COOKSON**  
Professional door solutions

\* "Dealer" refers to any purchaser, customer, or reseller of CornellCookson products, and not necessarily an authorized CornellCookson dealer.

BETWEEN JAMB PUSH-UP OPERATED  
PACKAGE UNIT

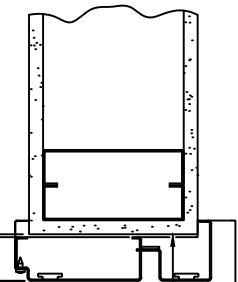
JEFFERSON PARISH KENNEDY

local authority having jurisdiction requirements.

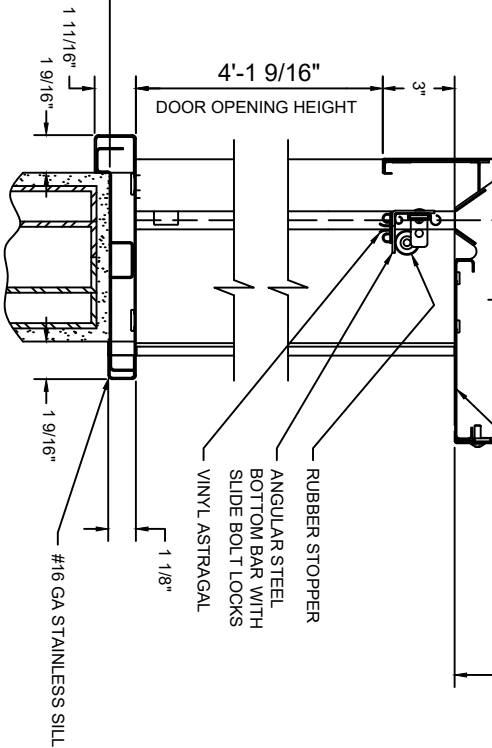
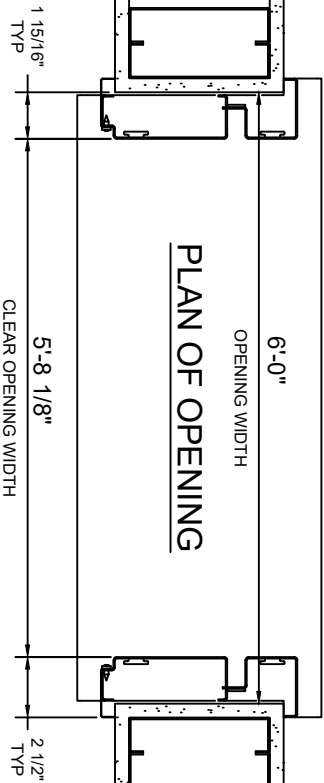


**AT MAXIMUM 8" ON CENTER  
- #12 x3" LONG STAINLESS STEEL FLAT  
DRILLING SCREW**

5'-8 1/8"	5'-11 3/4"	6'-0"	OPENING WIDTH
LENGTH (COIL SIDE)			
OPENING WIDTH			



## CP00005



## ELEVATION DETAIL

12-07-2021	PRODUCT CODE:	1 15/16" TYP		C-O 1/0		2 1/2" TYP		MODEL # :	JOB #:
GDE_PUB	PBF1F22S4							ESC20	E 01910734 001 B
				<div><b>COCKSON</b> <i>Prefabricated door solutions</i></div> <div>PACKAGE UNIT DETAILS AND PLAN OF OPENING</div> <div>JOB: JEFFERSON PARISH KENNEDY</div>				DEALER:	A.C.E. GARAGE DOOR CO LLC
								CONTRACTOR:	
								ARCHITECT:	
***	ORIGINAL DRAWING	02/26/24	WEBENGR	** "Dealer" refers to any purchaser, customer, or reseller of CornellCockson products, and not necessarily an authorized CornellCockson dealer.					
#	REVISION	DATE	BY						