

**Bid Number 50-00136880**

**One Time Purchase of Field Lights to replace Field Lights damaged by Hurricane Ida at various Recreation Department Facilities for the Jefferson Parish Department of Parks and Recreation**

**Bid Due: January 11, 2022 at 2:00 pm**

**ATTENTION VENDORS!!!**

**Please review all pages and respond accordingly, complying with all provisions in the technical specifications and Jefferson Parish Instructions for Bidders and General Terms and Conditions. All bids must be received on the Purchasing Department's eProcurement site by the bid due date and time.**

**Jefferson Parish Purchasing Department  
200 Derbigny Street  
General Government Building, Suite 4400  
Gretna, LA 70053**

**Buyer Name: Donna M Evans, Buyer II  
Buyer Email: DMEVANS@jeffparish.net  
Buyer Phone: 504-364-2691**

DATE: 12/22/2021  
BID NO.: 50-00136880

INVITATION TO BID  
THIS IS NOT AN ORDER

Page: 1

**JEFFERSON PARISH**

PURCHASING DEPARTMENT  
P.O. BOX 9  
GRETNA, LA. 70054-0009  
504-364-2678

BUYER: DMEVANS@jeffparish.net

BIDS WILL BE RECEIVED ONLINE VIA [WWW.JEFFPARISHBIDS.NET](http://WWW.JEFFPARISHBIDS.NET) UNTIL 2:00 PM, 1/11/2022 AND PUBLICLY OPENED THEREAFTER IN THE WEST BANK PURCHASING DEPT, SUITE 4400, JEFFERSON PARISH GENERAL GOVERNMENT BUILDING, 200 DERBIGNY STREET, GRETNA, LA 70053. At no charge, bidders are to submit via Jefferson Parish's electronic procurement page by visiting [www.jeffparishbids.net](http://www.jeffparishbids.net) to register for this free site. Additional instructions are included in the text box highlighting electronic procurement.

**LATE BIDS WILL NOT BE ACCEPTED**

**NOTE: ONLY BIDS WRITTEN IN INK OR TYPEWRITTEN, AND PROPERLY SIGNED BY A MEMBER OF THE FIRM OR AUTHORIZED REPRESENTATIVE, WILL BE ACCEPTED. PENCIL AND/OR PHOTOSTATIC FIGURES OR SIGNATURES SHALL RESULT IN BID REJECTION. HOWEVER, ELECTRONIC SIGNATURES AS DEFINED IN LSA - R.S. 9:2620(8) ARE ACCEPTABLE. SIGNATURE MUST BE A SECURED DIGITAL SIGNATURE.**

**INSTRUCTIONS FOR BIDDERS AND GENERAL CONDITIONS**

**THE FOLLOWING INSTRUCTIONS APPLY TO ALL BIDS**

All bids submitted are subject to these instructions and general conditions and any special conditions and specifications contained herein, all of which are made part of this bid proposal reference. By submitting a bid, vendor agrees to comply with all provisions of Louisiana Law as well be in compliance with the Jefferson Parish Code of Ordinances, Louisiana Code of Ethics, applicable Jefferson Parish ethical standards and Jefferson Parish Resolution No. 113646 and/or Resolution No. 113647 as amended.

Jefferson Parish adheres to the Louisiana Code of Governmental Ethics, contained in Louisiana Revised Statutes Annotated, R.S. 42:1101, et seq. Vendor/Proposer by this submission, warrants that there are no "conflicts of interest" related to this procurement that would violate applicable Louisiana Law. Violation of the Louisiana Code of Governmental Ethics may result in rescission of contract, permit or licenses, and the imposition of fines and/or penalties, without contractual liability to the public in accordance with applicable law.

All vendors submitting bids should register as a Jefferson Parish vendor if not already yet registered. Registration forms may be downloaded from <http://purchasing.jeffparish.net> and by clicking on Vendor Information. Current W-9 forms with respective Tax Identification numbers and vendor applications may be submitted at any time; however, if your company is not registered and/or a current W-9 form is not on file, vendor registration is mandatory. Vendors may experience a delay in payment if your company is not a registered vendor with Jefferson Parish.

All quotations shall be based on F.O.B. Agency warehouse or job site, anywhere within the Parish as designated by the Purchasing Department. This provision does not apply to public works projects

JEFFERSON PARISH requires all products to be new (current) and all work must be performed according to standard practices for the project. Unless otherwise specified, no aftermarket parts will be accepted. Unless otherwise specified, all workmanship and materials must have at least one (1) year guaranty, in writing, from the date of delivery and/or acceptance of the project. Any deviations or alterations from the specifications must be indicated and/or supporting documentation supplied with bid submission.

Bidders should submit all questions in writing via email to the buyer's email address as indicated above, no later than Five (5) working days prior to the bid opening. Bid numbers should be mentioned in all requests. If submitting online, vendors may send questions via the E-Procurement site no later than Five (5) working days prior to the bid opening.

If this bid requires a pre-bid conference (see Additional Requirements section), bidders are advised that such conference will be held to allow bidders the opportunity to identify any discrepancies in the bid specifications and seek further clarification regarding instructions. The Purchasing Department will issue a written response to bidders' questions in the form of an Addendum. Please note that all official communication will be expressed in the form of an addendum.

**Visit our website at [HTTP://PURCHASING.JEFFPARISH.NET](http://PURCHASING.JEFFPARISH.NET)**



All formal Addenda require written acknowledgement on the bid form by the bidder. Failure to acknowledge an Addendum on the bid form shall cause the bid to be rejected. JEFFERSON PARISH reserves the right to award bid to next lowest responsive and responsible bidder in this event.

JEFFERSON PARISH will accept one price for each item unless otherwise indicated. Two or more prices for one item will result in bid rejection. Bidders are required to complete, sign and return the bid form and/or complete and return the associated line item pricing forms as indicated. Vendors must not alter the bid forms. Doing so will cause the bid to be rejected.

A corporate resolution or written evidence of the individual signing the bid having such authority must be submitted with the bid. Failure to comply will cause bid to be rejected. For corporate entities, such written evidence may be a printout of the Louisiana Secretary of State's website listing the signatory as an officer. Such printout shall be included with the bid submission. Bids submitted by Owners or Sole Proprietorships must include certification that he or she owns the entity for which the bid is signed. This documentation must be submitted with the bid. Failure to do so will result in bid rejection.

NOTE: A sample corporate resolution can be downloaded from our website <http://purchasing.jeffparish.net> or you may provide your own document. A sample certification of sole proprietorship can also be downloaded from our website <http://purchasing.jeffparish.net> or you may provide your own document.

### INSTRUCTIONS FOR BIDDERS AND GENERAL CONDITIONS

A. AWARD OF CONTRACT: JEFFERSON PARISH reserves the right to award contracts or place orders on a lump sum or individual item basis, or such combination, as shall in its judgment be in the best interest of JEFFERSON PARISH. Every contract or order shall be awarded to the LOWEST RESPONSIVE and RESPONSIBLE BIDDER, taking into consideration the CONFORMITY WITH THE SPECIFICATIONS and the DELIVERY AND/OR COMPLETION DATE. SPLIT AWARDS MADE TO SEVERAL VENDORS WILL ONLY BE GRANTED TO THOSE DEEMED RESPONSIVE AND RESPONSIBLE.

All bid prices shall remain valid for 45 days. Jefferson Parish and the lowest responsive and responsible bidder(s) by mutual written consent may mutually agree to extend the deadline for award by one (1) or more extensions of thirty (30) calendar days.

PROTESTS: Only those vendors that submit bids in response to this solicitation may protest any element of the procurement, in writing to the Director of the Purchasing Department. Written protest must be received within 48 hours of the release of the bid tabulation by the Purchasing Department. After consultation, the Parish Attorney's Office will then respond to protests in writing. (For more information, please see Chapter 2, Article VII, Division 2, Sec. 2-914.1 of the Jefferson Parish Code of Ordinances.)

PREFERENCE: Unless federal funding is directly spent by Jefferson Parish for this purchase, preference is hereby given to materials, supplies, and provisions produced, manufactured or grown in Louisiana, quality being equal to articles offered by competitors outside the state. "LSA – R.S. 38:2251-2261"

B. USE OF BRAND NAMES AND STOCK NUMBERS: Where brand names and stock numbers are specified, it is for the purpose of establishing certain minimum standards of quality. Bids may be submitted for products of equal quality, provided brand names and stock numbers are specified. Complete product data may be required prior to award.

C. CANCELLATION OF CONTRACT: JEFFERSON PARISH reserves the right to cancel all or any part if not shipped promptly. No charges will be allowed for parking or cartage unless specified in quotation. The order must not be filled at a higher price than quoted. JEFFERSON PARISH reserves the right to cancel any contract at anytime and for any reason by issuing a THIRTY (30) day written notice to the contractor.

For good cause and as consideration for executing a contract with Jefferson Parish, vendor conveys, sells, assigns and transfers to Jefferson Parish or its assigns all rights, title and interest in and to all causes of action it may now or hereafter acquire under the antitrust laws of the United States and the State of Louisiana, relating to the particular good or services purchased or acquired by Jefferson Parish.

D. PRICES: Jefferson Parish is exempt from paying sales tax under LSA-R.S. 47:301 (8)(c). All prices for purchases by Jefferson Parish of supplies and materials shall be quoted in the unit of measure specified and unless otherwise specified, shall be exclusive of state and local taxes. The price quoted for work shall be stated in figures. In the event there is a difference in unit prices and totals, the unit price shall prevail.

Quantities listed are for bidding purposes only. Actual requirements may be more or less than quantities listed.

Bidders are not to exclude from participation in, deny the benefits of, or subject to discrimination under any program or activity, any person in the United States on the grounds of race, color, national origin, or sex; nor discriminate on the basis of age under the Age Discrimination Act of 1975, or with respect to an otherwise qualified handicapped individual as provided in Section 504 of the Rehabilitation Act of 1973, or on the basis of religion, except that any exemption from such prohibition against discrimination on the basis of religion as provided in the Civil Rights Act of 1964, or Title VI and VII of the Act of April 11, 1968, shall also apply. This assurance includes compliance with the administrative requirements of the Revenue Sharing final handicapped discrimination provisions contained in Section 51.55 (c), (d), (e), and (k)(5) of the Regulations. New construction or renovation projects must comply with Section 504 of the 1973 Rehabilitation Act, as amended, in accordance with the American National Standard Institute's specifications (ANSI A17.1-1961).



DATE: 12/22/2021

BID NO.: 50-00136880

Page: 3

## INSTRUCTIONS FOR BIDDERS AND GENERAL CONDITIONS

Jefferson Parish and its partners as the recipients of federal funds are fully committed to awarding a contract(s) to firm(s) that will provide high quality services and that are dedicated to diversity and to containing costs. Thus, Jefferson Parish strongly encourages the involvement of minority and/or woman-owned business enterprises (DBE's, including MBE's, WBE's and SBE's) to stimulate participation in procurement and assistance programs.

The purpose and intention of this invitation to bid is to afford all suppliers an equal opportunity to bid on all construction, maintenance, repair, operating supplies and/or equipment listed in this bid proposal. JEFFERSON PARISH WILL ACCEPT ONE BID ONLY FROM EACH VENDOR. Items bid must meet specifications.

Advertised bids will be tabulated and a copy of the tabulation will be forwarded to each responding bidder.

### IN ACCORDANCE WITH STATE REGULATIONS JEFFERSON PARISH OFFERS ELECTRONIC PROCUREMENT TO ALL VENDORS

This electronic procurement system allows vendors the convenience of reviewing and submitting bids online.

This is a secure site and authorized personnel have limited read access only. Bidders are to submit electronically using this free service; while the website accepts various file types, one single PDF file containing all appropriate and required bid documents is preferred. Bidders submitting uploaded images of bid responses are solely responsible for clarity. If uploaded images/documents are not legible, then bidder's submission will be rejected. Please note all requirements contained in this bid package for electronic bid submission.

Please visit our E-Procurement Page at [www.jeffparishbids.net](http://www.jeffparishbids.net) to register and view Jefferson Parish solicitations. For more information, please visit the Purchasing Department page at <http://purchasing.jeffparish.net>.

The general specifications for construction projects and the purchase of materials, services and/or supplies are those adopted by the JEFFERSON PARISH Council by Resolution No. 113646 or 113647 as amended. The general conditions adopted by this resolution shall be considered as much a part of this document as if they were written wholly herein. A copy may be obtained from the Office of the Parish Clerk, Suite 6700, Jefferson Parish General Government Building, 200 Derbigny Street, Gretna, LA 70053. You may also obtain a copy by visiting the Purchasing Department webpage at <http://purchasing.jeffparish.net> and clicking on Online Forms.

### ADDITIONAL REQUIREMENTS FOR THIS BID

PLEASE MATCH THE NUMBERS PRINTED IN THIS BOX WITH THE CORRESPONDING INSTRUCTIONS BELOW.

13, 15

1. All bidders must attend the MANDATORY pre-bid conference and will be required to sign in and out as evidence of attendance. In accordance with LSA R.S. 38:2212(I), all prospective bidders shall be present at the beginning of the MANDATORY pre-bid conference and shall remain in attendance for the duration of the conference. Any prospective bidder who fails to attend the conference or remain for the duration shall be prohibited from submitting a bid for the project.
2. Attendance to this pre-bid conference is optional. However, failure to attend the pre-bid conference shall not relieve the bidder of responsibility for information discussed at the conference. Furthermore, failure to attend the pre-bid conference and inspection does not relieve the successful bidder from the necessity of furnishing materials or performing any work that may be required to complete the work in accordance with the specification with no additional cost to the owner.
3. Contractor must hold current applicable JEFFERSON PARISH licenses with the Department of Inspection and Code Enforcement. Contractor shall obtain any and all permits required by the JEFFERSON PARISH Department of Inspection and Code Enforcement. The contractor shall be responsible for the payment of these permits. All permits must be obtained prior to the start of the project. Contractor must also hold any and all applicable Federal and State licenses. Contractor shall be responsible for the payment of these permits and shall obtain them prior to the start of the project.



## INSTRUCTIONS FOR BIDDERS AND GENERAL CONDITIONS

4. A LA State Contractor's License will be required in accordance with LSA R.S. 37-2150 et. seq. and such license number will be shown on the outside of the bid electronic envelope. Failure to comply will cause the bid to be rejected. When submitting the bid electronically, the license number must be entered in the appropriate field in the electronic procurement system. Failure to comply will cause the bid to be rejected.
5. It is the bidder's responsibility to visit the job site and evaluate the job before submitting a bid.
6. Job site must be clean and free of all litter and debris daily and upon completion of the contract. Passageways must be kept clean and free of material, equipment, and debris at all times. Flammable material must be removed from the job site daily because storage will not be permitted on the premises. Precaution must be exercised at all times to safeguard the welfare of JEFFERSON PARISH and the general public.
7. PUBLIC WORKS BIDS: All awards for public works in excess of \$5,000.00 will be reduced to a formal contract which shall be recorded at the contractor's expense with the Clerk of Court and Ex-Officio Recorder of Mortgages for the Parish of Jefferson. A price list of recordation costs may be obtained from the Clerk of Court and Ex-Officio Recorder of Mortgages for the Parish of Jefferson. All awards in excess of \$25,000.00 will require both a performance and a payment bond. Unless otherwise stated in the bid specifications, the performance bond requirements shall be 100% of the contract price. Unless otherwise state in the bid specifications, the payment bond requirements shall be 100% of the contract price. Both bonds shall be supplied at the signing of the contract.
8. NON-PUBLIC WORKS BIDS: A performance bond will be required for this bid. The amount of the bond will be 100% of the contract price unless otherwise indicated in the specifications. The performance bond shall be supplied at the signing of the contract.
9. NON-PUBLIC WORKS BIDS: A payment bond will be required for this bid. The amount of the bond will be 100% of the contract price unless otherwise indicated in the specifications. The payment bond shall be supplied at the signing of the contract.
10. All bidders must comply with the requirements stated in the attached "Standard Insurance Requirements" sheet attached to this bid solicitation. Failure to comply with this instruction will result in bid rejection.
11. A bid bond will be required with bid submission in the amount of 5% of the total bid, unless otherwise stated in the bid specifications. All sureties must be in original format (no copies) When submitting a bid online, vendors must submit an electronic bid bond through the respective online clearinghouse bond management system(s) as indicated in the electronic bid solicitation on Central Auction House. No scanned paper copies of any bid bond will be accepted as part of the electronic bid submission.
12. This is a requirements contract to be provided on an as needed basis. JEFFERSON PARISH makes no representations on warranties with regard to minimum guaranteed quantities unless otherwise stated in the bid specifications.
13. Freight charges should be included in total cost when quoting. If not quoted FOB DELIVERED, freight must be quoted as a separate item. Bid may be rejected if not quoted FOB DELIVERED or if freight charges are not indicated on bid form.
14. PUBLIC WORKS BIDS - Completed, Signed and Properly Notarized Affidavits Required; This applies to all solicitations for construction, alteration or demolition of public buildings or projects, in conformity with the provisions contained in LSA-RS 38:2212.9, LSA-RS 38:2212.10, LSA-RS 38:2224, and Sec 2-923.1 of the Jefferson Parish Code of Ordinances. For bidding purposes, all bidders must submit with bid submission COMPLETED, SIGNED and PROPERLY NOTARIZED Affidavits, including: Non-Conviction Affidavit, Non-Collusion Affidavit, Campaign Contribution Affidavit, Debt Disclosures Affidavit and E-Verify Affidavit. For the convenience of vendors, all affidavits have been combined into one form entitled PUBLIC WORKS BID AFFIDAVIT. This affidavit must be submitted in its original format, and without material alteration, in order to be compliant and for the bid to be considered responsive. A scanned copy of the completed, signed and properly notarized affidavit may be submitted with the bid, however, the successful bidder must submit the original affidavit in its original format and without material alteration upon contract execution. Failure to comply will result in the bid submission being rejected as non-responsive. The Parish reserves the right to award bid to the next lowest responsive and responsible bidder in this event.

**INSTRUCTIONS FOR BIDDERS AND GENERAL CONDITIONS**

15. NON PUBLIC WORK BIDS - Completed, Signed and Properly Notarized Affidavits Required in conformity with the provisions contained in LSA – RS 38:2224 and Sec 2-923.1 of the Jefferson Parish Code of Ordinances. For bidding purposes, all bidders must submit with bid submission COMPLETED, SIGNED and PROPERLY NOTARIZED Affidavits, including: Non-Collusion Affidavit, Debt Disclosures Affidavit and Campaign Contribution Affidavit. For the convenience of vendors, all affidavits have been combined into one form entitled NON PUBLIC WORKS BID AFFIDAVIT. This affidavit must be submitted in its original format, and without material alteration, in order to be compliant and for the bid to be considered responsive. A scanned copy of the completed, signed and properly notarized affidavit may be submitted with the bid, however, the successful bidder must submit the original affidavit in its original format and without material alteration upon contract execution. Failure to comply will result in the bid submission being rejected as non-responsive. The Parish reserves the right to award bid to the next lowest responsive and responsible bidder in this event.

16. The ensuing contract for this bid solicitation may be eligible for FEMA reimbursement and/or Federal funding/reimbursement. As such, the referenced appendix will be applicable accordingly and shall be considered a part of the bid documents. All applicable certifications must be duly completed, signed and submitted with bid submission. Failure to submit applicable certifications with bid submission will result in bid rejection.

17. For this project, the Contractor shall not pay any state or local sales or use taxes on materials and equipment which are affixed and made part of the immovable property of the project or which is permanently incorporated in the project (hereinafter referred to as "applicable materials and equipment."). All purchases of applicable materials or equipment shall be made by the contractor on behalf of and as the agent of Jefferson Parish (Owner), a political subdivision of the State of Louisiana. No state and local sales and use taxes are owed on applicable materials and equipment under the provisions of Act 1029 of the 1991 Regular Session - Louisiana Revised Statute 47:301(8)(c). Owner will furnish to contractor a certificate form which certifies that Owner is not required to pay such state or local sales and use taxes, and contractor shall furnish a copy of such certificate to all vendors or suppliers of the applicable materials and equipment, and report to Owner the amount of taxes not incurred.

It shall be the duty of every parish officer, employee, department, agency, special district, board, and commission: and the duty of every contractor, subcontractor, and licensee of the parish, and the duty of every applicant for certification of eligibility for a parish contract or program, to cooperate with the Inspector General in any investigation, audit, inspection, performance review, or hearing pursuant to JPCO 2-155.10(19). By signing this document, every corporation, partnership, or person contracting with PARISH, whether by cooperative endeavor, intergovernmental agreement, bid, proposal, application or solicitation for a parish contract, and every application for certification of eligibility for a parish contract or program, attests that it understands and will abide by all provisions of JPCO 2-155.10.



DATE: 12/22/2021

Page: 6

BID NO.: 50-00136880

**BID FORM**  
Non Public Works

**All Public Work Projects are required to use the Louisiana Uniform Public Work Bid Form**

All prices must be held firm unless an escalation provision is requested in this bid. Jefferson Parish will allow one escalation during the term of the contract, which may not exceed the U.S. Bureau of Labor Statistics National Index for all Urban Consumers, unadjusted 12 month figure. The most recently published figure issued at the time an adjustment is requested will be used. A request must be made in writing by the vendor, and the escalation will only be applied to purchases made after the request is made.

Are you requesting an escalation provision?

YES \_\_\_\_\_ NO \_\_\_\_\_

MAXIMUM ESCALATION PERCENTAGE REQUESTED \_\_\_\_\_ %

INITIAL BID PRICES WILL REMAIN FIRM THROUGH THE DATE OF \_\_\_\_\_.

For the purposes of comparison of bids when an escalation provision is requested, Jefferson Parish will apply the maximum escalation percentage quoted by the bidder to the period to which it is applied in the bid. The initial price and the escalation will be used to calculate the total bid price. It will be assumed, for comparison of prices only, that an equal amount of material or labor is purchased each month throughout the entire contract.

**DELIVERY: FOB JEFFERSON PARISH**

INDICATE DELIVERY DATE ON EQUIPMENT AND SUPPLIES \_\_\_\_\_

**LOUISIANA CONTRACTOR'S LICENSE NO.:** (if applicable) \_\_\_\_\_

**THIS SECTION MUST BE COMPLETED BY BIDDER:**

FIRM NAME: BELL ELECTRICAL SUPPLY CO., INC.

ADDRESS: 6909 QUEENS BLVD.

CITY, STATE: WOODSIDE, NY 11377

ZIP: \_\_\_\_\_

TELEPHONE: ( 718-446-5700 EXT 101

FAX: ( 718-424-1785

EMAIL ADDRESS: ANTHONY@BELLELECTRIC.NYC

In the event that addenda are issued with this bid, bidders MUST acknowledge all addenda on the bid form. Bidder must acknowledge receipt of an addendum on the bid form by placing the addendum number as indicated. Failure to acknowledge any addendum on the bid form will result in bid rejection.

Acknowledge Receipt of Addenda: NUMBER: \_\_\_\_\_

NUMBER: \_\_\_\_\_

NUMBER: \_\_\_\_\_

NUMBER: \_\_\_\_\_

TOTAL PRICE OF ALL BID ITEMS: \$ 31,706.08

AUTHORIZED  
SIGNATURE: \_\_\_\_\_

ANTHONY BAEK

Printed Name

TITLE: PRESIDENT

SIGNING INDICATES YOU HAVE READ AND COMPLY WITH THE INSTRUCTIONS AND CONDITIONS.

**NOTE:** All bids should be returned with the BID NUMBER and BID OPENING DATE indicated on the outside of the envelope submitted to the Purchasing Department.

## INVITATION TO BID FROM JEFFERSON PARISH - continued

BID NO.: 50-00136880

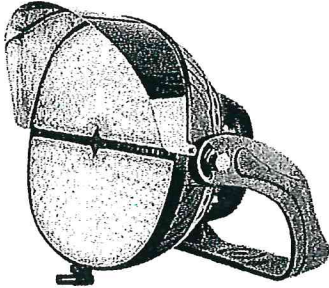
SEALED BID

| ITEM<br>NUMBER | QUANTITY | U/M | DESCRIPTION OF ARTICLES  | UNIT PRICE<br>QUOTED | TOTALS      |
|----------------|----------|-----|--|----------------------|-------------|
| 1              | 14.00    | EA  | ONE TIME PURCHASE OF FIELD LIGHTS TO<br>REPLACE FIELD LIGHTS DAMAGED BY<br>HURRICANE IDA AT VARIOUS RECREATION<br>DEPARTMENT FACILITIES FOR THE JEFFERSON<br>PARISH DEPARTMENT OF PARKS & RECREATION | MORRIS<br>77000A     |             |
|                |          |     | 0010 FSP 500 4 G1 50K 350w 120-277v<br>Sports Light Or Equal   | \$924.92             | \$12,948.88 |
| 2              | 20.00    | EA  | Solid-State Die Cast Aluminum Housing<br>Ensures No Mobile Pieces<br>Mounting Bracket Included<br>50/60Hz Operation  | MORRIS<br>77001A     |             |
|                |          |     | MUST HAVE 10 FOOT WHIP CORD ATTACHED<br>ON THE SPORTS LIGHTS   | \$937.86             | \$18,757.20 |
|                |          |     | 0020 FSP 500 4 G1 HVU 50K 277-480v<br>Sports Light Or Equal<br>Solid-State Die Cast Aluminum Housing<br>Ensures No Mobile Pieces<br>Mounting Bracket Included<br>50/60Hz Operation                   |                      |             |
|                |          |     | MUST HAVE 10 FOOT WHIP CORD ATTACHED<br>ON THE SPORTS LIGHTS   |                      |             |
|                |          |     | Contact:<br>Roy Blum at 504-736-6999 or<br>rblum@jeffparish.net  |                      |             |
|                |          |     | Deliver To:<br>East Bank Recreation<br>6925 Saints Drive<br>Metairie, LA 70003   |                      |             |



|               |       |
|---------------|-------|
| PROJECT:      | _____ |
| CATALOG #:    | _____ |
| FIXTURE TYPE: | _____ |
| NOTES:        | _____ |

## FSP REC SERIES Sparta™ Sports Light Gen 1



The *FSP Sparta™ Sports Light Gen 1 Series* sets a new standard of technology for professional outdoor sport lighting. Unlike competitor products, the *FSP Sports Light* requires less power and produces greater lumen output while generating less heat to extend the life of the fixture. Movable parts are eliminated to reduce wear and tear and it's only a fraction of the weight from the competition. Engineered optics direct the light precisely onto the field to shine uniformly and reduce glare.

### APPLICATIONS

Recreational Sports, Parks, etc.

### PERFORMANCE INFORMATION



| REC Series       |      |        | SMALL |
|------------------|------|--------|-------|
| SERIES NUMBER    | WATT | LUMENS | CCT   |
| FSP 500 4 G1 50K | 350W | 51,000 | 5000K |
| FSP 700 4 G1 50K | 505W | 70,000 | 5000K |

### OPTIONS



| ORDERING GUIDE  |  |   |                                    |  |   |  | EXAMPLE: FSP 500 4 G1 50K  |
|---|--|---|------------------------------------|--|---|--|--|
| Luminaire Type  | Lumen Output   | Distribution Type                         | Generation                         | Voltage  | CCT   | Finish   | Options  |
| <input type="checkbox"/> <b>FSP</b><br>Rec Series<br>Sparta<br>Sports Light | <input type="checkbox"/> <b>500</b> 51,000 Lumens<br><input type="checkbox"/> <b>700</b> 70,000 Lumens | <input type="checkbox"/> <b>4</b> =NEMA 4 | <input type="checkbox"/> <b>G1</b> | <input type="checkbox"/> <b>BLANK</b> =<br>120-277V<br><input type="checkbox"/> <b>HVU</b> =<br>347-480V | <input type="checkbox"/> <b>40K</b><br>4000K*<br><input type="checkbox"/> <b>50K</b><br>5000K | <input type="checkbox"/> <b>BLANK</b> =<br>Black | <input type="checkbox"/> <b>BLANK</b> =Laser Guide & Black Top Visor<br><input type="checkbox"/> <b>SW</b> =SLG Wireless Control<br><input type="checkbox"/> <b>SV</b> = Silver Top Visor<br><input type="checkbox"/> <b>TR-SP-B</b> = Tenon Adaptor, Transform Yoke mount to Slipfilter<br><input type="checkbox"/> <b>TR-SP-B-MP</b> = Tenon Adaptor Mounting Plate. Works with Tenon adaptor (Required) |

\*Contact sales for availability.

Due to continuous product improvements, specification and/or equipment updates may change without notice.

## SPECIFICATIONS

### HOUSING

Solid-state die cast aluminum housing ensures no mobile pieces and provides maintenance-free operation for more than 5 years.

### AMBIENT TEMPERATURE

Suitable for use in  $-40^{\circ}\text{C}$  to  $55^{\circ}\text{C}$  ( $-40^{\circ}\text{F}$  to  $131^{\circ}\text{F}$ )

### MOUNTING

Mounting bracket is included for a wide variety of applications.

### EFFICACY

Up to 146 lumens per watt (see individual wattage data)

### CCT AND CRI

4000K and 5000K CCT available; 70+ CRI

### OPTICS

Custom-engineered optics direct light precisely while reducing glare.

### EPA

2.1

### WARRANTY

5-year limited warranty. Comprehensive warranty terms can be located on [www.slgus.com](http://www.slgus.com).

### ELECTRICAL

50/60Hz operation with 120-277V input. HVU option available. Dimming 0-10V driver. Surge Protector 5KA/10KV for 120-277V, 10KA/20KV for 347-480V.

### LIFE

More than 70,000 Hour Life Span. Based on LM-80 Results.

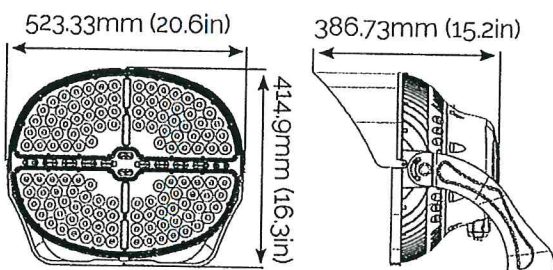
### FINISH

Polyester Powder finish for superior corrosion resistance and maximum durability.

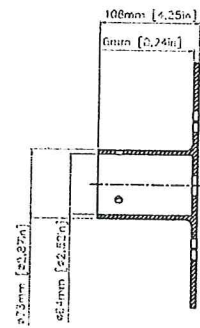
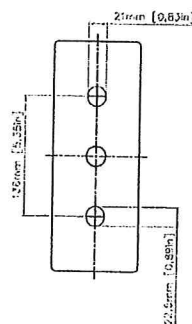
### CERTIFICATIONS

UL Listed for wet locations, IP65 rating. DesignLights Consortium® (DLC) Premium 5.1 qualified product. Not all versions of this product may be DLC qualified. Please visit [www.slgus.com](http://www.slgus.com) to confirm which versions are qualified.

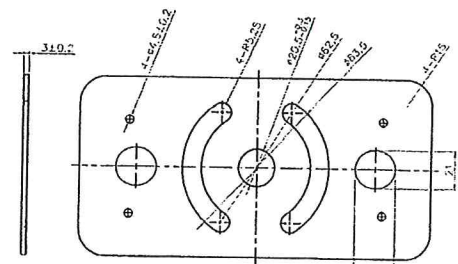
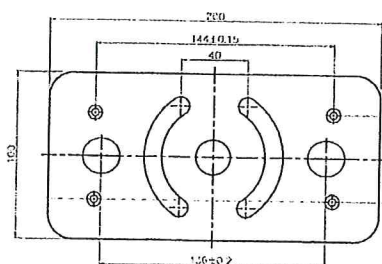
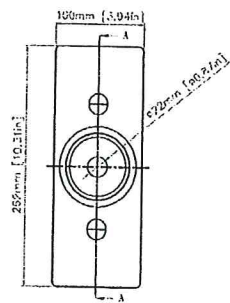
### DIMENSIONS



SMALL  
350W/505W  
Weight: 38 lbs  
EPA: 2.1



Tenon Adaptor

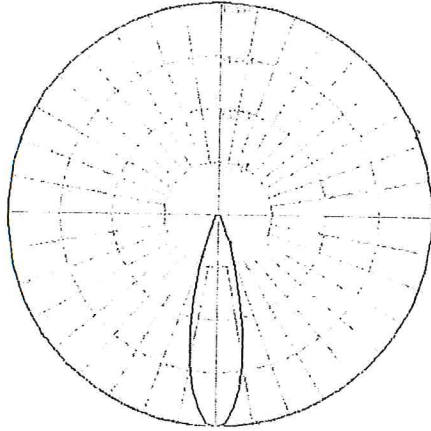


Mounting Plate

Due to continuous product improvements, specification and/or equipment updates may change without notice.



## PHOTOMETRIC DATA



Polar Distribution NEMA 4

## PERFORMANCE COMPARISON

|                  |         | 5000K     |                |          |
|------------------|---------|-----------|----------------|----------|
| Product Series   | Wattage | Lumens    | Efficacy (LPW) | Voltage  |
| FSP 500 4 G1     | 350W    | 51,000 Lm | 146 Lm/W       | 120-277V |
| FSP 700 4 G1     | 505W    | 70,000 Lm | 139 Lm/W       | 120-277V |
| FSP 500 4 G1 HVU | 350W    | 51,000 Lm | 146 Lm/W       | 347-480V |
| FSP 700 4 G1 HVU | 505W    | 70,000 Lm | 139 Lm/W       | 347-480V |

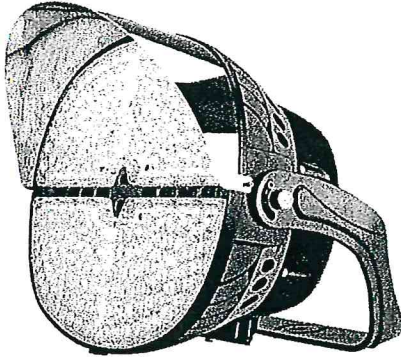
## ELECTRICAL DATA

| Wattage (W) | Current(A) |      |      |      |      |      |
|-------------|------------|------|------|------|------|------|
|             | 120V       | 208V | 240V | 277V | 347V | 480V |
| 350W        | 2.84       | 1.64 | 1.42 | 1.23 | 0.98 | 0.71 |
| 505W        | 4.21       | 2.43 | 2.11 | 1.83 | 1.46 | 1.06 |

Due to continuous product improvements, specification and/or equipment updates may change without notice.

PROJECT: \_\_\_\_\_  
 CATALOG #: \_\_\_\_\_  
 FIXTURE TYPE: \_\_\_\_\_  
 NOTES: \_\_\_\_\_

## FSP PRO SERIES Sparta™ Sports Light Gen 1



The *FSP Sparta™ Sports Light Gen 1 Series* sets a new standard of technology for professional outdoor sport lighting. Unlike competitor products, the *FSP Sports Light* requires less power and produces greater lumen output while generating less heat to extend the life of the fixture. Movable parts are eliminated to reduce wear and tear and it's only a fraction of the weight from the competition. Engineered optics direct the light precisely onto the field to shine uniformly and reduce glare.

### APPLICATIONS

Outdoor Sports Arenas

### PERFORMANCE INFORMATION



| PRO Series            |      |         | LARGE |
|-----------------------|------|---------|-------|
| SERIES NUMBER         | WATT | LUMENS  | CCT   |
| FSP 900 3 G1 HVU 57K  | 650W | 91,000  | 5700K |
| FSP 1150 3 G1 HVU 57K | 850W | 113,000 | 5700K |
| FSP 900 4 G1 HVU 57K  | 650W | 88,000  | 5700K |
| FSP 1150 4 G1 HVU 57K | 850W | 112,000 | 5700K |

### OPTIONS



Wireless Control



Laser Guide



Black Top Visor



Silver Top Visor



TR-SP-B Tenon  
Adaptor

### ORDERING GUIDE

EXAMPLE: FSP 900 3 G1 HVU 57K

| Luminaire Type  | Lumen Output   | Distribution Type  | Generation                         | Voltage   | CCT  | Finish   | Options   |
|---|--|--|------------------------------------|---|--|--|---|
| <input type="checkbox"/> <b>FSP</b><br>Pro Series<br>Sparta<br>Sports Light | <input type="checkbox"/> <b>900</b> 88,000 Lumens<br><input type="checkbox"/> <b>1150</b> 112,000 Lumens | <input type="checkbox"/> <b>3</b> =NEMA 3<br><input type="checkbox"/> <b>4</b> =NEMA 4 | <input type="checkbox"/> <b>G1</b> | <input type="checkbox"/> <b>HVU</b> =<br>240-480V | <input type="checkbox"/> <b>40K</b><br>4000K*<br><input type="checkbox"/> <b>50K</b><br>5000K*<br><input type="checkbox"/> <b>57K</b><br>5700K | <input type="checkbox"/> <b>BLANK</b> =<br>Black | <input type="checkbox"/> <b>BLANK</b> =Laser Guide & Black Top Visor<br><input type="checkbox"/> <b>SW</b> =SLG Wireless Control<br><input type="checkbox"/> <b>SV</b> = Silver Top Visor<br><input type="checkbox"/> <b>TR-SP-B</b> = Tenon Adaptor, Transform<br>Yoke mount to Slipfitter |

\*Contact sales for availability.

Due to continuous product improvements, specification and/or equipment updates may change without notice.



## SPECIFICATIONS

### HOUSING

Solid-state die cast aluminum housing ensures no mobile pieces and provides maintenance-free operation for more than 10 years.

### AMBIENT TEMPERATURE

Suitable for use in -40°C to 55°C (-40°F to 131 °F)

### MOUNTING

Mounting bracket is included for a wide variety of applications.

### EFFICACY

Up to 135 lumens per watt (see individual wattage data)

### CCT AND CRI

4000K, 5000K, and 5700K CCT available; 70+CRI

### OPTICS

Custom-engineered optics direct light precisely while reducing glare.

### EPA

3.0

### WARRANTY

10-year limited warranty. Comprehensive warranty terms can be located on [www.slgus.com](http://www.slgus.com). 25-year warranty available by request. Call sales for more information.

### ELECTRICAL

50/60Hz operation with 240-480V HVU input. Dimming 0-10V driver. Surge protector 10kA/20kV.

### LIFE

100,000 Hour Life Span. Based on LM-80 Results.

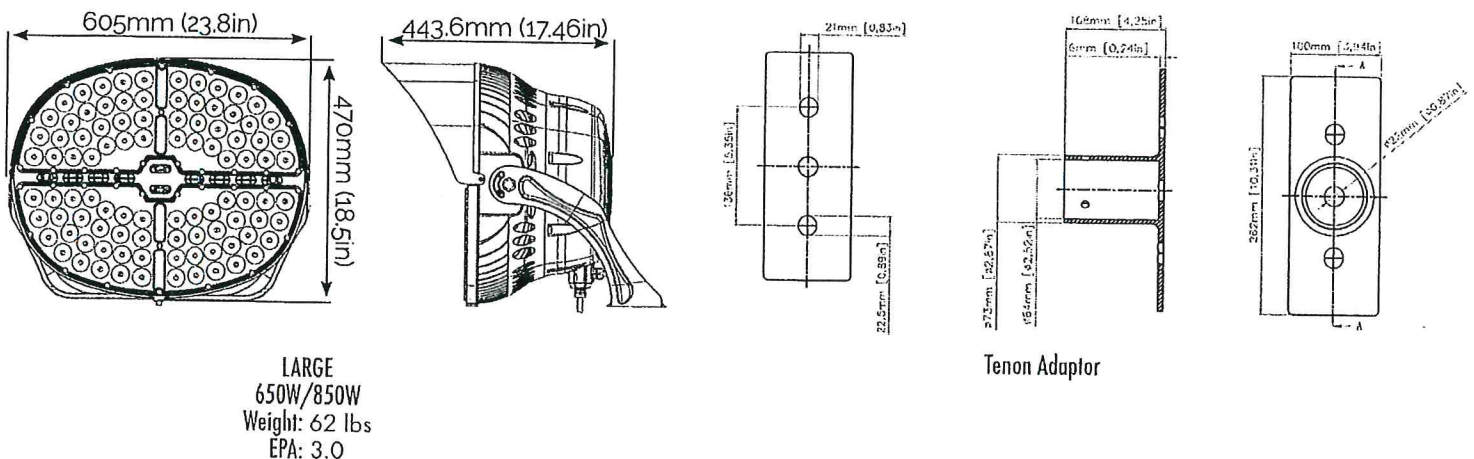
### FINISH

Polyester Powder finish for superior corrosion resistance and maximum durability.

### CERTIFICATIONS

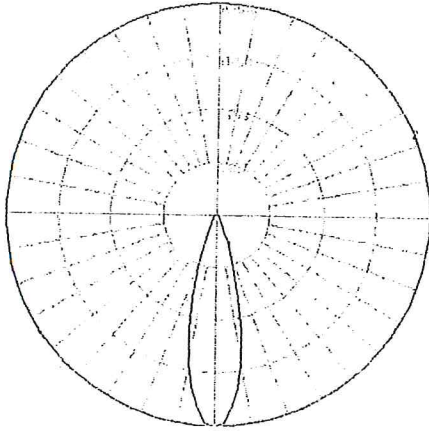
UL Listed for wet locations, IP65 rating. DesignLights Consortium® (DLC) Premium 5.1 qualified product. Not all versions of this product may be DLC qualified. Please visit [www.slgus.com](http://www.slgus.com) to confirm which versions are qualified.

## DIMENSIONS

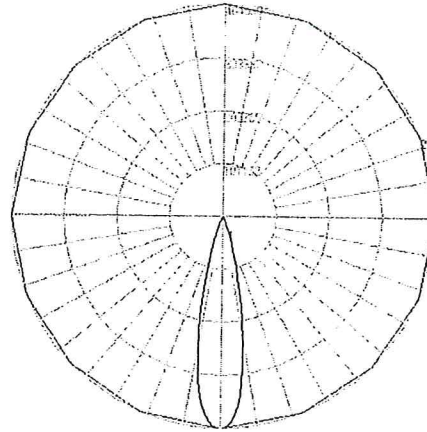


Due to continuous product improvements, specification and/or equipment updates may change without notice.

## PHOTOMETRIC DATA



Polar Distribution NEMA 4



Polar Distribution NEMA 3

## PERFORMANCE COMPARISON

| Product Series        | Wattage | Lumens     | Efficacy (LPW) | Voltage  | CCT   |
|-----------------------|---------|------------|----------------|----------|-------|
| FSP 900 3 G1 HVU 57K  | 650W    | 91,000 Lm  | 140 Lm/W       | 240-480V | 5700K |
| FSP 1150 3 G1 HVU 57K | 850W    | 113,000 Lm | 133 Lm/W       | 240-480V | 5700K |
| FSP 900 4 G1 HVU 57K  | 650W    | 88,000 Lm  | 135 Lm/W       | 240-480V | 5700K |
| FSP 1150 4 G1 HVU 57K | 850W    | 112,000 Lm | 132 Lm/W       | 240-480V | 5700K |

## ELECTRICAL DATA

| Wattage (W) | Current(A) |      |      |      |      |      |
|-------------|------------|------|------|------|------|------|
|             | 120V       | 208V | 240V | 277V | 347V | 480V |
| 650W        | N/A        | N/A  | 2.7  | 2.35 | 1.87 | 1.35 |
| 850W        | N/A        | N/A  | 3.54 | 3.07 | 2.44 | 1.77 |

Due to continuous product improvements, specification and/or equipment updates may change without notice.



## **CORPORATE RESOLUTION**

EXCERPT FROM MINUTES OF MEETING OF THE BOARD OF DIRECTORS OF  
**BELL ELECTRICAL SUPPLY CO., INC.**

---

INCORPORATED.

AT THE MEETING OF DIRECTORS OF **BELL ELECTRICAL SUPPLY CO., INC.**  
INCORPORATED, DULY NOTICED AND HELD ON 01/05/22,  
A QUORUM BEING THERE PRESENT, ON MOTION DULY MADE AND SECONDED. IT  
WAS:

RESOLVED THAT **ANTHONY BAEK**, BE AND IS HEREBY  
APPOINTED, CONSTITUTED AND DESIGNATED AS AGENT AND ATTORNEY-IN-  
FACT OF THE CORPORATION WITH FULL POWER AND AUTHORITY TO ACT ON  
BEHALF OF THIS CORPORATION IN ALL NEGOTIATIONS, BIDDING, CONCERNS  
AND TRANSACTIONS WITH THE PARISH OF JEFFERSON OR ANY OF ITS AGENCIES,  
DEPARTMENTS, EMPLOYEES OR AGENTS, INCLUDING BUT NOT LIMITED TO, THE  
EXECUTION OF ALL BIDS, PAPERS, DOCUMENTS, AFFIDAVITS, BONDS, SURETIES,  
CONTRACTS AND ACTS AND TO RECEIVE ALL PURCHASE ORDERS AND NOTICES  
ISSUED PURSUANT TO THE PROVISIONS OF ANY SUCH BID OR CONTRACT, THIS  
CORPORATION HEREBY RATIFYING, APPROVING, CONFIRMING, AND ACCEPTING  
EACH AND EVERY SUCH ACT PERFORMED BY SAID AGENT AND ATTORNEY-IN-  
FACT.

I HEREBY CERTIFY THE FOREGOING TO BE  
A TRUE AND CORRECT COPY OF AN  
EXCERPT OF THE MINUTES OF THE ABOVE  
DATED MEETING OF THE BOARD OF  
DIRECTORS OF SAID CORPORATION, AND  
THE SAME HAS NOT BEEN REVOKED OR  
RESCINDED.



---

**SECRETARY-TREASURER**

01/05/22

---

**DATE**

## **Non-Public Works Bid Affidavit Instructions**

- Affidavit is supplied as a courtesy to Affiants, but it is the responsibility of the affiant to insure the affidavit they submit to Jefferson Parish complies, in both form and content, with federal, state and parish laws.
- Affidavit must be signed by an authorized representative of the entity or the affidavit will not be accepted.
- Affidavit must be notarized or the affidavit will not be accepted.
- Notary must sign name, print name, and include bar/notary number, or the affidavit will not be accepted.
- Affiant **MUST** select either A or B when required or the affidavit will not be accepted.
- Affiants who select choice A must include an attachment or the affidavit will not be accepted.
- If both choice A and B are selected, the affidavit will not be accepted.
- Affidavit marked N/A will not be accepted.
- It is the responsibility of the Affiant to submit a new affidavit if any additional campaign contributions are made after the affidavit is executed but prior to the time the council acts on the matter.

*Instruction sheet may be omitted when submitting the affidavit*



**Non-Public Works Bid**

**AFFIDAVIT**

**STATE OF** NEW YORK

**PARISH/COUNTY OF** QUEENS

BEFORE ME, the undersigned authority, personally came and appeared: \_\_\_\_\_

ANTHONY BAEK, (Affiant) who after being by me duly sworn, deposed and said that  
he/she is the fully authorized PRESIDENT of BELL ELECTRICAL SUPPLY CO., INC.  
(Entity),  
the party who submitted a bid in response to Bid Number \_\_\_\_\_, to the Parish of  
Jefferson.

Affiant further said:

Campaign Contribution Disclosures

**(Choose A or B, if option A is indicated please include the required  
attachment):**

**Choice A** \_\_\_\_\_ Attached hereto is a list of all campaign contributions, including the date and amount of each contribution, made to current or former elected officials of the Parish of Jefferson by Entity, Affiant, and/or officers, directors and owners, including employees, owning 25% or more of the Entity during the two-year period immediately preceding the date of this affidavit or the current term of the elected official, whichever is greater. Further, Entity, Affiant, and/or Entity Owners have not made any contributions to or in support of current or former members of the Jefferson Parish Council or the Jefferson Parish President through or in the name of another person or legal entity, either directly or indirectly.

**Choice B** \_\_\_\_\_ there are **NO** campaign contributions made which would require disclosure under Choice A of this section.

Debt Disclosures

**(Choose A or B, if option A is indicated please include the required attachment):**

**Choice A** \_\_\_\_\_ Attached hereto is a list of all debts owed by the affiant to any elected or appointed official of the Parish of Jefferson, and any and all debts owed by any elected or appointed official of the Parish to the Affiant.

**Choice B** \_\_\_\_\_ There are **NO** debts which would require disclosure under Choice A of this section.

Affiant further said:

That Affiant has employed no person, corporation, firm, association, or other organization, either directly or indirectly, to secure the public contract under which he received payment, other than persons regularly employed by the Affiant whose services in connection with the construction, alteration or demolition of the public building or project or in securing the public contract were in the regular course of their duties for Affiant; and

*[The remainder of this page is intentionally left blank.]*



That no part of the contract price received by Affiant was paid or will be paid to any person, corporation, firm, association, or other organization for soliciting the contract, other than the payment of their normal compensation to persons regularly employed by the Affiant whose services in connection with the construction, alteration or demolition of the public building or project were in the regular course of their duties for Affiant.

\_\_\_\_\_  
Signature of Affiant

\_\_\_\_\_  
Printed Name of Affiant

SWORN AND SUBSCRIBED TO BEFORE ME

ON THE \_\_\_\_\_ DAY OF \_\_\_\_\_, 20\_\_\_\_.

\_\_\_\_\_  
Notary Public

\_\_\_\_\_  
Printed Name of Notary

\_\_\_\_\_  
Notary/Bar Roll Number

My commission expires \_\_\_\_\_.