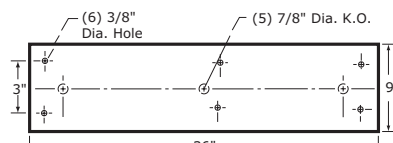
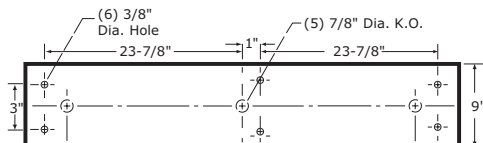


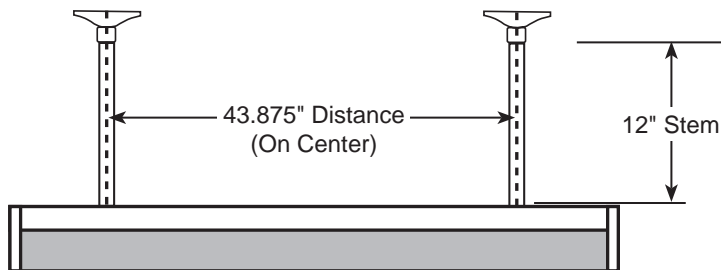
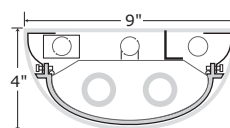
E72 Series



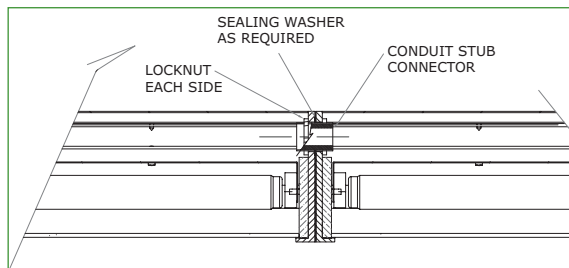
E73 Series



E74 Series



E74 Shown with Pendant Mount Option (PM)



Instructions for Joining Units for Tandem Mount



Tandem Mount [TM]

Catalog Number

Project Name & Location

Type



Product Specifications

DRIVER: 120 or 277 Volt, extreme temp range -30°C to 90°C, electronic driver [UNV]. Optional [PGM] programmable mA driver available.

FINISH: Housing parts are 5 stage-pretreated and finished in white polyester powder coat. Optional Natatorium Coating [NTC] is available.

HOUSING: Extruded aluminum with internal reinforcements of double thick cast aluminum ends for the most strength and rigidity. Tamper-proof torx screws secure end caps. All metal parts are 5-stage pre-treated.

LAMP: [LED] Light Emitting Diode.

LENS: U.V. stabilized .130" thick clear frosted polycarbonate lens [CFP] – Standard.

LENS FASTENERS: 4 screws to secure lens in place [2 per side].

REFLECTOR: Formed aluminum with multiple bends for max rigidity and unitising all electrical components.

COMPLIANCE: Built according to US. and Canadian safety standards. IP65 Rated and Suitable For Wet Location Covered Ceiling. Wall Mount - Damp Location; requires shielding to maintain wet listing.

LONG LIFE: 50,000 hour LEDs at L80 reduce life cycle maintenance cost.

order example:

E74-CFP-LED50-CT4-UNV-WHT

SERIES

| | |
|-----|--------------------------|
| E71 | 1 Foot Linear E71 Series |
| E72 | 2 Feet Linear E72 Series |
| E73 | 3 Feet Linear E73 Series |
| E74 | 4 Feet Linear E74 Series |

LENS

CFP Clear Frosted Polycarbonate (Standard)

LAMP TYPE

LED Light Emitting Diode

LED WATTAGE / COLOR TEMPERATURE

| SERIES | LED |
|--------|----------------------------|
| E71 | 20w 30w |
| E72 | 20w 40w |
| E73 | 20w 40w 50w 60w |
| E74 | 20w 40w 50w 60w *80w *100w |

*Requires Conduit Adapter/Back Box [CA]

CT3 ±3000K LED Color Temp

CT35 ±3500K LED Color Temp

CT4 ±4000K LED Color Temp

CT5 ±5000K LED Color Temp

CT65 ±6500K LED Color Temp

VOLTAGE

120 120 Volts

277 277 Volts

347 347 Volts

UNV 120–277 Universal Volt Electronic Driver

Must Specify Voltage for EM option

2UNV Two 120–277 Universal Volt Electronic Drivers

Must Specify Voltage for EM option

OPTIONS

CA Aluminum Conduit Adapter/Back Box

*Required for Emergency Battery Options.

Consult Factory for Specific Criteria.

DIM Dimming Dimming Driver (Consult Factory)

– Step Dimming available

EM Emergency Battery (Consult Factory for Options)

– Must Specify Voltage [120V or 277V]

FUS Fuse and Fuseholder

FUS2 Double Fusing

GN Generator Transfer Device

H/L1 High/Low LED Light Level

– Single AC-Input Feed / Switch Sensor (Required)

H/L2 High/Low LED Light Level

– Wired for Dual AC Input Feeds

MD Integral Motion Detector

– Specify "A" for Single Circuit: All On / All Off

– Specify "B" for Single Circuit: High / Low Light

MDX External Motion Detector

– Specify "A" for Single Circuit: All On / All Off

– Specify "B" for Single Circuit: High / Low Light

White (WHT) or Bronze (BZ) Finish

PM Pendant Mount [Two 12" Length Stems Standard]

*43.875" Distance (On Center) between Stems

PGM Programmable mA Driver

REM Remote Emergency Battery

self-contained in CA

– Must Specify Voltage [120V or 277V];

*Consult Factory for REM Options

SU Surge Protection for LED fixtures

TM Tandem Mount (E74 Only)

– Specify Length: 8', 12' or Custom Length

WMSH Protective Shielding for Wall Mount

WMT Wall Mount – Damp Only (Requires WMSH)

FINISH

BK Black

BZ Bronze

WHT White Finish Standard

NTC Natatorium Coating