



Natchitoches Parish School Board
Attn: Michael Milner, Purchasing Manager
Purchasing Department
310 Royal Street
Natchitoches, LA 71458

PowerSchool Group LLC

150 Parkshore Drive
Folsom, CA 95630
www.powerschool.com
Tel. 916-288-1725

Re: Benchmark Assessment Tool RFP

July 14, 2016

Dear Mr. Milner,

PowerSchool Group LLC is excited to provide the Natchitoches Parish School Board (School Board) a response to your RFP for a Benchmark Assessment Tool. Our proposal provides a comprehensive solution designed specifically for the success of the School Board.

PowerSchool combines the right tools into the **industry's first unified classroom experience**, to give back precious time in the classroom and drive student growth. We have re-defined the approach to the student information system and provide an inter-connected, easy-to-use, and central solution for education activity. PowerSchool is not just administrative software; it is an educational platform that will empower the School Board with invaluable insights and unmatched, cohesive functionality. By delivering an end-to-end solution designed to improve the K-12 education experience, our platform connects and empowers key stakeholders: administrators, teachers, students, and parents.

It is a privilege to present the School Board with our **PowerSchool Assessment and Analytics** solution, an Assessment System to support all aspects of test delivery and data analysis for both local and state assessments. The PowerSchool Assessment and Analytics solution has been supporting educators and students since 2006. We are a qualified, experienced, and reliable vendor with an understanding of the critical field of formative assessment and data analysis. We focus on helping our clients achieve measurable results by revealing academic growth opportunities for all students.

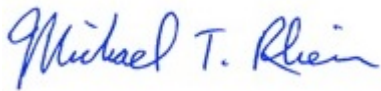
Once the solution is fully implemented, the School Board can count on unmatched product reliability, exceptional customer support, and ongoing service. PowerSchool Assessment was founded by educators, and therefore we personally understand the needs of our clients and the importance of providing a solution that is intuitive, dependable, and supported when teachers need it the most. Our fully integrated solution offers the School Board the following advantages and services:

PowerSchool Assessment - Accessible and Balanced. The fully integrated PowerSchool Assessment component allows the effective use of formative, interim, and summative measures of student performance that address student needs immediately. PowerSchool Assessment offers a content neutral platform that supports many different types and sources of test items, including technology-enhanced, constructed response and multiple choice. We focus on helping our clients achieve measurable results by revealing academic growth opportunities for all students. We are proud that over 95% of our teachers routinely use PowerSchool Assessment!

PowerSchool Analytics - A 360° View of Student Progress. The PowerSchool Analytics module provides integrated tools like intervention tracking, behavior and attendance monitoring, and easy analysis of assessment data. Every stakeholder involved (district, school, and teacher) gets a full 360° view of student progress to ensure that all students have the greatest chance to succeed.

Thank you for considering our proposal for your important initiative. We look forward to discussing our proposed solution and answering any questions you may have. Please direct any questions or clarifications to Brian Rubin, at 540-685-3895 or brian.rubin@powerschool.com.

Sincerely,



Mike Rhein, Vice President of Sales
mike.rhein@powerschool.com

Table of Contents

Required Form	3
Section I: Functional and Technical Requirements	4
1.1 Mandatory Requirements.....	4
1.2 Appendix A - Functional Matrix	7
1.3 Technology Infrastructure Requirements.....	10
Section II: Solution Overview	11
PowerSchool Assessment	11
PowerSchool Analytics	15
Section III: Implementation, Training, and Support	17
Section IV: Qualifications & References	21
Section V: Additional Information & Product Features	22
Unified Classroom Experience.....	23
Value-added Product Offerings.....	24
PowerSchool Learning.....	25
PowerTeacher Pro	27
Section VI: Pricing	28
Pricing Assumptions	28

Contact Information

Following is our location and contact information. Should you have any questions about this response or our proposed PowerSchool Assessment and Analytics solution, we would be happy to provide further information and a product demonstration.

**RFP
Response
Authorized
By:**

Mike Rhein,
Vice President of Sales
Direct: 651-592-7580
Email: mike.rhein@powerschool.com

**Sales
Contacts:**

Brian Rubin, NBCT
Account Executive/Solutions Consultant
Direct: 540-685-3895
Email: brian.rubin@powerschool.com

**PowerSchool
Corporate
Office:**

PowerSchool Group LLC
150 Parkshore Drive
Folsom, CA 95630
www.powerschool.com

Required Form

The completed Bidder Information Sheet is provided on the following page.

BIDDER INFORMATION SHEET
RFP - BENCHMARK ASSESSMENT TOOL

Section I: Functional and Technical Requirements

1.1 Mandatory Requirements

Requirement

1. Item Bank

- a) The proposed item bank must be owned and supported by the vendor.
- b) The vendor item bank must include four (4) core subjects.
- c) The vendor item bank must offer Technology Enhanced Items (TEI) including, but not limited to:
 - a. multiple choice (1-9 distractors)
 - b. multi-select/hotspot
 - c. fill-in-the-blank
 - d. constructed response
 - e. drag-and-drop

Response

Yes, the item bank is both owned and supported by PowerSchool. PowerSchool supplies items for ELA, Math, SS, and SCI for grades K-12. Items include multiple choice and Technology Enhanced Items. Technology Enhanced items include Multi-select, Fill-in-the-Blank, Drag and Drop, and Constructed Response.

Requirement

2. Assessment Delivery

- a) Assessment delivery must be available both online and via paper and pencil.
- b) Paper and pencil assessment delivery must provide immediate results after scanning.
- c) Scanning does not require the purchase of any additional hardware.

Response

Yes, assessments can be delivered via paper and pencil and online. For paper and pencil testing, there are multiple methods to grade using a free app or scan-email printer, which will provide the same, full reporting functionality delivered with online assessments.

Requirement

3. Support

- a) Vendor must provide end user support for teachers at no charge. Please describe your support methods and availability.
- b) Vendor must offer a variety of product training options.
- c) Vendor must offer Professional Development training options.

Response

Once PowerSchool Assessment is fully implemented, PowerSchool Group is committed to providing support to help our clients in a way that best complements their needs. Every single user with a login to PowerSchool Assessment will also have access to direct and immediate support from PowerSchool Live.

PowerSchool Live is a team of highly qualified and eager to assist support technicians that educators can contact via a remote screen sharing session. This tool allows any PowerSchool Assessment user to invite a PowerSchool Live technician to view their computer screen in real time to observe the issue and guide the user through the problem by drawing on their screen, or with permission, even accessing their mouse and navigating for them when in need. This resource is available to users Monday – Friday, 7 a.m. to 5 p.m. in Eastern and Central time zones, while educators are actively engaged on the platform during the school day.

As educators, we understand the time constraints in the classroom, so there is never a wait time to speak with a PowerSchool Live representative. We provide assistance while in the classroom, getting questions quickly addressed so that you can continue teaching. Our current users appreciate this level of service so much that continue to let us hear their thanks. On average, 40% of all PowerSchool Live calls that we receive are rated by our customers and, of those, we are proud to maintain a negative rating under 1%.

Our support team will help you in any way that is convenient for your environment. Our goal is to give teachers assistance without disrupting their day-to-day responsibilities and attention to their students. If PowerSchool Live is not enough, we also provide no hold guaranteed phone support as well as e-mail support with a 24-hour response guarantee.

In addition, there are numerous professional development and product training options, which include basic use to more advanced topics in pedagogy and leadership. Please see the flyer, provided on the following page, for more information on our available options for training and professional development.



Product Training and Professional Development

For a complete breakdown of our trainings and professional development offerings scan the QR code.



	Basic	Intermediate	Advanced	Professional Development
Assessment User Training	●	●	●	●
Analytics User Training	●	●	●	●
Assessment Review & Extension Session	●	●	●	●
Analytics Review & Extension Session	●	●	●	●
Assessment Builder	●	●	●	●
Assessment Item Creation	●	●	●	●
Advanced Focus on Reporting	●	●	●	●
Advanced Report Builder	●	●	●	●
Analytics Intervention Monitoring	●	●	●	●
Formative Assmt. Literacy	●	●	●	●
Data Driven Instruction	●	●	●	●
Interventions that Work	●	●	●	●
The Rigorous Classroom	●	●	●	●
	MINIMUM TRAINING		RECOMMENDED TRAINING & PD	

ALL RECOMMENDATIONS PER SCHOOL		MINIMUM PRODUCT TRAINING AND PD RECOMMENDATIONS				
		Basic	Intermediate	Advanced	Prof. Dev.	Total
Exclusive Onsite (50 participants)	price per training	1 BASICS PRODUCT SESSION 1/2 DAY	1 REV. & EXT. PROD. TRAINING SESSION 1/2 DAY	2 ADVANCED PRODUCT SESSIONS 1 DAY	3 NON-CONSECUTIVE PD SESSIONS 3 DAYS	
1/2 day Product Training	\$1200	\$1,200	\$1,200	\$1,500	\$7,500	\$11,400
Full day Product Training	\$1500					
Full day PD	\$2500					
Exclusive Online (30 participants)	price per hour	1 BASICS PRODUCT SESSION 4 hours delivered in 2, 2 hr sessions	1 REV. & EXT. PROD. TRAINING SESSION 4 hours delivered in 2, 2 hr sessions	2 ADVANCED PRODUCT SESSIONS 4 hours delivered in 2, 2 hr sessions	3 PD SESSIONS/ ADVANCED TOPICS 9 hours delivered in 3, 3 hr sessions	
Product Training	\$100	\$400	\$400	\$400	\$2,700	\$3,900
Professional Development	\$300					

Requirement

4. Analytics

- a) Vendor solution must provide a comprehensive and integrated longitudinal data analysis tool.
- b) The analysis tool must provide the following:
 - a. Early Warning Tracking System
 - b. Intervention Monitoring
 - c. Ability to create District Driven Thresholds

Response

Yes, the proposed PowerSchool Analytics solution provides a comprehensive tool that can track the school history of a student and allow for Early Warning Tracking and Intervention Monitoring. The system also allows the district to take ownership and set their own thresholds and proficiency bands.



1.2 Appendix A - Functional Matrix

The table below outlines the degree to which PowerSchool's proposed solution complies with the Functional Matrix criteria set forth in Section 1.2 of your RFP. Where appropriate, we have provided additional comments.

Y = Yes, fully compliant	N = Non-compliant	P = Partially compliant
--------------------------	-------------------	-------------------------

Item Description	Y	N	P	Additional Comments
System supports creation and delivery of state-wide/district- wide common assessments as well as classroom level formative assessments that prepare students for end of year (state summative) assessments.	✓			
System must provide unlimited assessment delivery for all users (interim and formative).	✓			This unlimited assessment delivery also includes summative and progress monitoring.
System must provide unlimited test item creation for all users.	✓			Included items also can be copied and modified to differentiate based on student needs.
System must support four core subject areas (Math, ELA, Science, Social Studies), grades K-12.	✓			
System must support Louisiana State Standards.	✓			All items are attached/connected to the element of the Louisiana State Standards.
System includes items that are Multiple Choice, True/False, Fill-in-the-Blank, Drag and Drop, Multi-select, Constructed Response.	✓			The current offering in our item bank include Multiple Choice, Fill-in-the-Blank, Multi Select, Enhanced Multiple Choice, and Constructed Response. We also offer the district the option to create and use True/False items.
System must provide alignment of test items to multiple cognitive measures Webb's Depth of Knowledge and Bloom's Taxonomy.	✓			
System provides for the creation, delivery and reporting of secure and non-secure assessments.	✓			
System must provide online delivery of assessments through the following platforms: Macintosh, PC, Chromebook, and iPad student testing app.	✓			
System must provide online tools (i.e. calculator, highlighter, compass, ruler, straightedge, protractor, eliminator, pencil, etc.).	✓			
System must provide split screen support for reading selections and associated test items.	✓			



Item Description	Y	N	P	Additional Comments
System must offer options for multi-section assessments for designation of tools per section (i.e. calculator enabled sections vs. non-calculator enabled sections).	✓			All online testing tools can be allowed or restricted for each section based on the needs of the assessment creators.
System must support paper and pencil delivery of assessments.	✓			
Plain paper scanning/scoring options must be available free of charge.	✓			
System must provide the ability to create, deliver and score assessments designed to demonstrate student growth (SLO Reporting Feature).	✓			
System must provide a full kiosk mode testing environment to prevent student navigation away from testing application.	✓			
System must provide reporting of assessment performance at multiple levels: Student, Class, Teacher, School, District.	✓			
System must allow for view/access to test item content when viewing online reports.	✓			
System must provide regular (daily) and automated updates of student, teacher, course, roster, and school data from the district's SIS.	✓			
System must allow individual users to designate content (test items, resources, assessments) as "favorite" for quick access and organization.	✓			
System must provide teacher/proctor monitoring of online test sessions, including student progress.	✓			
Online testing must have the capability to randomize question order, answer order and passage order.	✓			
System must provide the ability for proctors to establish download and submit passwords.	✓			This can be set up by a site administrator or through support. In addition, multiple users can have access, which is common in a collaboration or team setting.
System must provide reporting of assessment performance by pass rate and average (cut scores customizable).	✓			
System must be able to export reports to various formats: PDF, Excel, Word, Rich Text CSV XML.	✓			

Item Description	Y	N	P	Additional Comments
System must provide printable reports for students, teachers and administrators: Individual student assessment performance.	✓			Reports can be generated in both pdf and csv formats, which allow for printing and sharing.
System must support Individual student mastery (State Standards) Class mastery (State Standards).	✓			
System must provide multiple levels of access to the system (teacher, school, district, and state) to see disaggregated data filtered by standards, Bloom's Taxonomy, Webb's DOK, subgroup, etc.	✓			The system allows multiple levels of access based on permissions for teacher, school, and district. The Analytics modules also allow for comparison by teacher, class, grade level, school, district, and state. Items can be filtered by Bloom's Taxonomy, Webb's DOK, subgroups, and standards.
System must auto-assign permissions to users upon data import (i.e. assign all users teaching courses a default "Teacher" permission set).	✓			The system can give blanket permissions to certain roles in the district. The district may also choose to make changes in permissions based on an individual basis.

1.3 Technology Infrastructure Requirements

Requirement

Please describe, in general terms, the technical requirements of your system including hardware, networking and operating system environments.

Response

On the following pages, we have provided an outline of the technical specifications for using the PowerSchool Assessment and Analytics system. This includes requirements for platforms and browsers, internet connectivity, and mobile device requirements.



Full Technical Specifications and Requirements

Tech Support Contact Information

Phone: 855.423.2223 | Email: support@interactiveachievement.com

PowerSchool Assessment Device Requirements

PowerSchool Assessment & Analytics software can be accessed and is compatible with **Mac**, **PC**, and **Chromebook** platforms. Specifically, the configurations listed in figures A, B, and C are tested and are known to support Assessment & Analytics functionality.

Please note:

Some Assessment & Analytics functionality may be available when utilizing systems not listed or not meeting the minimum requirements below. Full functionality and support, however, cannot be guaranteed for systems outside of those specified.

Figure A: Windows PC System Requirements for Assessment & Analytics

Operating System	Microsoft Windows 8.1, 8, 7
Processor	Intel® 2.0 GHz or faster
Available Disk	500 MB (minimum)
RAM	2 GB or greater
Display	System recommended resolution or greater. If using a resolution lower than the system recommended, the Assessment & Analytics and PowerTest user experience could be affected.
Navigation Device	mouse/pointing device/keyboard
Browser	Internet Explorer, Firefox and Chrome (one of 3 latest applicable releases; allow pop-ups)
Software	Adobe® Flash Player 11.3 + PDF reader (Adobe® X or higher recommended)

Figure B: Apple System Requirements for Assessment & Analytics

Operating System	Mac OS X v10.8 or later (Intel)
Processor	Intel® 2.0 GHz or faster
Available Disk	500 MB (minimum)
RAM	2 GB or greater
Display	System recommended resolution or greater. If using a resolution lower than the system recommended, the Assessment & Analytics and PowerTest user experience could be affected.
Navigation Device	mouse/pointing device/keyboard
Browser	Safari, Firefox and Chrome (one of 3 latest applicable releases; allow pop-ups)
Software	Adobe® Flash Player 11.3 + PDF reader (Adobe® X or higher recommended)

Figure C: Chromebook System Requirements for Assessment & Analytics

Operating System	Chrome OS
Processor	Intel® 1.5 GHz or faster
Available Disk	16 GB SSD or greater (minimum)
RAM	2 GB or greater
Display	System recommended resolution or greater. If using a resolution lower than the system recommended, the Assessment & Analytics and PowerTest user experience could be affected.
Navigation Device	mouse/pointing device/keyboard
Browser	Google Chrome (allow pop-ups)
Software	Adobe® Flash Player auto updates within Google Chrome browser



Assessment & Analytics

Assessment & Analytics Whitelisting

Please note:

If unable to whitelist the specified URLs, please email support@interactiveachievement.com for alternative IP information.

The following URL's will need to be whitelisted for Assessment & Analytics.



.interactiveachievement.net



.interactiveachievement.com



comodoca.com

Access to Assessment & Analytics

Assessment is a web-based software program that can be accessed from the Assessment & Analytics website <http://www.interactiveachievement.com>

- ➔ Click **TEACHER LOGIN** located in the top right corner
- ➔ Select the state from the drop-down menu under 'State'
- ➔ Select the school division from the drop-down menu under 'District'
- ➔ Select the 'onTRAC' icon to be directed to the login page

Minimum Infrastructure Recommendations for Student Testing*

Exam content (both text and image) is delivered through PowerTest as a series of image files. Accordingly, school and classroom infrastructure must be able to manage both the volume of data and number of individual hits needed to deliver exams to the student device. Due to variations within a district or school infrastructure the specific bandwidth needs may vary. The chart below provides an estimate of how much load is generated per second for a given number of student tests during download. These are provided as a guideline for determining whether the infrastructure available at a particular location (specifically the classroom/lab where testing occurs) meets the minimum for testing performance.

Typical Load Based on Students per Minute

Exams Downloaded Per Min (SPM)	Hits Per Sec (HPS)	Megabits Per Sec (MPS)
50	167	5
100	333	10
200	667	20

PowerSchool delivers exam content images using industry standards, allowing exam content to be cached through most caching appliances. When conducting student testing, using a caching appliance can decrease bandwidth consumption per student and total load on infrastructure. For assistance in determining whether your current caching appliance is compatible with Assessment exam content delivery, please email support@interactiveachievement.com.



Access to PowerTest*

PowerTest is a web-based student testing interface that can be accessed in a variety of ways. For ease of access it is recommended that URL shortcuts be created for PC, Macs, and Chromebooks and the PowerTest app be installed on compatible tablets.

1. PowerTest URL Shortcut

- ➔ Create a desktop shortcut through the browser settings
- ➔ Click the shortcut that has been recently created to ensure functionality
- ➔ PowerTest software can be accessed by using the following format in a web browser:
https://iTest.interactiveachievement.net/StateCode_DistrictCode/v7/
Example: https://iTest.interactiveachievement.net/va_testing/v7/
- ➔ URL shortcuts compatible with devices covered in Figures A, B, and C

2. PowerSchool PowerTest App

- ➔ Available for both iPad and Android devices
- ➔ Download the app from the Apple App Store (iPad) or Google Play Store (Android) by searching for 'PowerSchool'
- ➔ Upon downloading the PowerSchool App to a device, you will be prompted to select your state and district code
- ➔ PowerTest apps compatible with devices covered in Figure D

Figure D: Mobile Device Requirements

	iPad	Android
Model	Generation 2 or higher	Any
Operating System	IOS 6.1 or higher	OS 4.0 or higher
Screen Size	10.1" or higher	10.1" or higher

3. PowerTest Login

- ➔ PowerTest can also be accessed through www.interactiveachievement.com
- ➔ Follow all steps listed under 'PowerSchool Assessment', selecting the 'PowerTest' icon rather than the 'onTRAC' icon
- ➔ This method is recommended as a back-up to a shortcut or app

Please note:

For PowerTest, Chromebooks should not be configured to use 'Public Session Kiosk mode'. If 'Public Session Kiosk mode' is used, the testing experience may be less than desirable.



Printing Student Bubble Sheets (paper/pencil testing only)*

Paper/pencil testing is available for multiple-choice exams and uses plain paper bubble sheets. These bubble sheets are printed directly from Assessment.

When printing bubble sheets:

- ➔ Make sure that "Print One-Sided" is selected
- ➔ Use the default margins of top: 1", bottom: 1", left: 1", and right: 1"
- ➔ Do not reduce the print size (scaled printing)
[For example, do not scale the print size to 75% of the original size]
- ➔ Bubble sheets should be printed in grey scale
- ➔ Printing the optional cover page is highly recommended

Scanning Student Bubble Sheets (paper/pencil testing only)*

To take advantage of Assessment's robust reporting features, completed bubble sheets must be scanned after testing. PowerSchool offers three methods for scanning plain paper bubble sheets.

1. Email to Scan

Email to Scan requires converting completed student bubble sheets into electronic format and emailing to the specified address for scanning.

- ➔ Compatible electronic formats: PDF, compact PDF, TIFF, JPEG, or GIF at 100 x 100 DPI or greater
- ➔ Email resulting file to iscan@interactiveachievement.com
- ➔ Please do not exceed more than 30 bubble sheets in a batch
- ➔ Including the cover page is highly recommended for a post-scan report

2. Plain Paper Scanning

Plain Paper Scanning allows the scanning of printed plain paper bubble sheets using the most commonly used scanners with TWAIN communication compatibility.

- ➔ The scanning application is included in Assessment's Testing Center subsequent to activation
- ➔ 'Dynamic Web TWAIN' plugin is required for scanning- plugin download is included in scanning application
- ➔ TWAIN plugin will need to be allowed through preferred browser to function correctly
- ➔ Including the cover page is highly recommended for a post-scan report

3. PowerScan App

The PowerScan tablet app allows for the ability to scan a plain paper bubble sheet with an iPad or Android tablet.

- ➔ The PowerScan app is currently supported by Apple iPads and Android tablets with a camera and internet connection
- ➔ See Figure D for device requirements

****These requirements are only necessary for Assessment.
Districts and schools not purchasing Assessment may disregard these sections.***

Section II: Solution Overview

The following section contains a narrative overview of the functionality provided in our proposed PowerSchool Assessment and Analytics solution, including screenshot samples for your review and details on the academic content coverage for Louisiana.

PowerSchool Assessment

PowerSchool Assessment is a comprehensive, web-based solution that enables schools and districts to create, formative, benchmark, and summative assessments that are delivered online or by paper/pencil; and receive real-time reports to guide instructional decisions. PowerSchool Assessment is a vendor hosted solution and is provided as a Software as a Service (SaaS) offering – requiring no installation by the School Board. PowerSchool Assessment is capable of integrating securely and seamlessly with the School Board through both automated data management and manual data manipulation. For seamless classroom application, assessments can be delivered online and offline within the PowerSchool Assessment solution. In each instance of delivery, reporting is immediately available with no latency, enabling the teacher to modify instructional approaches as needed.

PowerSchool Assessment empowers teachers and helps improve student growth. PowerSchool Assessment assists teachers and administrators in making data-driven curriculum decisions in an effort to raise student achievement. The analysis and application of formative assessment data as part of a continuous improvement model is a powerful way to improve student achievement. Make data timely and accessible for your students, teachers, and administrators through a platform that is easy-to-use, well supported, and highly adopted.

PowerSchool Assessment benefits students, teachers, and administrators:



A content neutral platform that supports many different types and sources of test items. Users may create and deliver assessments utilizing many combinations of item types and content providers.



Standards Alignment. A tight alignment between standards, curriculum, instruction and assessment builds teacher confidence in the inferences drawn from assessment data.



An intuitive online testing interface. Online assessment is delivered through a multi-platform application - PowerTest™. The only requirements are an internet connection and browser for immediate access.



A balanced assessment system. Supports the effective use of formative, interim, and summative measures of student performance that address student needs immediately.



Technology Enhanced Items (TEI). Supports a wide variety of items types including drag and drop, hotspot, ordering, single line response, etc.



Incorporate data, reporting, and graphs into your management to help improve performance in your classes, schools and district.

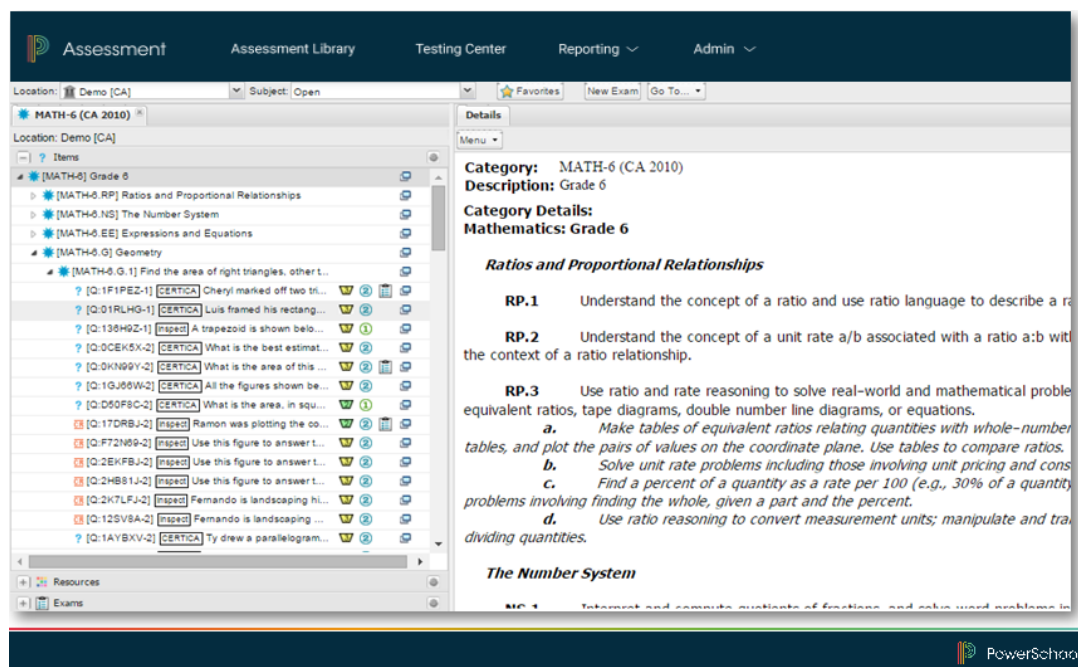


Identify trends, discover areas of weakness, and understand growth areas so you can better plan and allocate resources, helping you improve education and achievement.

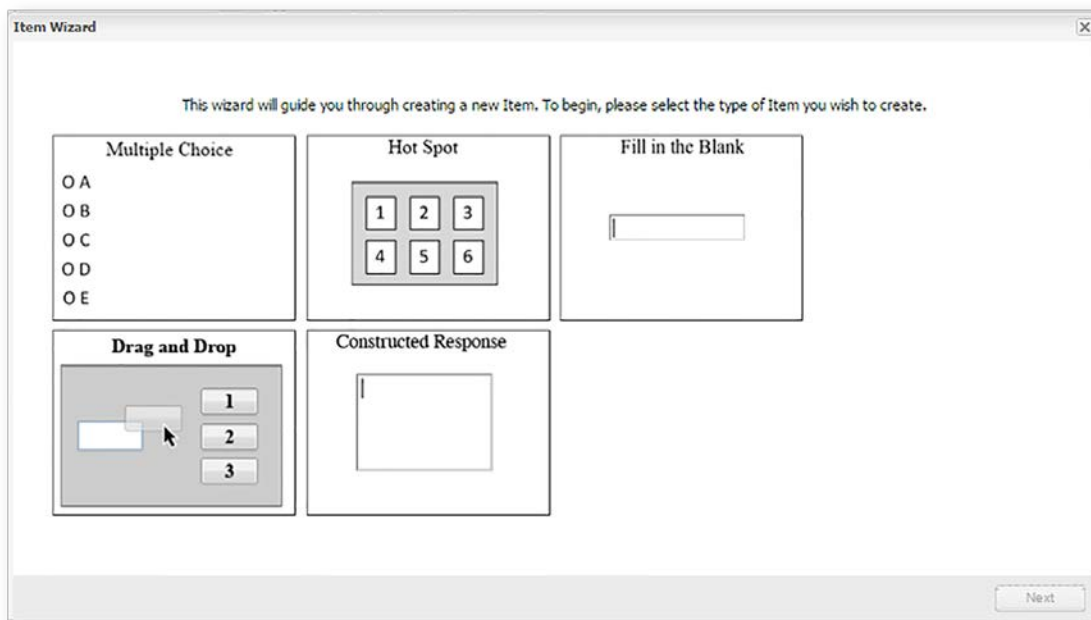


Understand the state of affairs quickly and simply with clear data illustration and easy reporting so teachers spend less time manipulating data and more time improving instruction.

PowerSchool Assessments allows teachers and administrators to build their own formative assessments utilizing a huge bank of standards-aligned items, or by using pre-built assessments. Educators can distribute district-wide assessments, or collaborate across classes and schools to create assessments for the district. Permissions within the software enable the right people to have the right access, helping districts to understand and build student performance.



PowerSchool Assessment supports all national, state, and local standards, including the Common Core. What you see here is the part of the item bank, where each question is an item. Items in the bank are aligned to standards and to Bloom's taxonomy and Webb's Depth of Knowledge.



This wizard will guide you through creating a new item. To begin, please select the type of item you wish to create.

Multiple Choice

O A
O B
O C
O D
O E

Hot Spot

1

2

3

4

5

6

Fill in the Blank

Drag and Drop

1

2

3

Constructed Response

Next

Individuals within the district can be given the permission to create their own items. The Item Creation Wizard walks item creators through each stage of the process using a step-by-step guide. A district can also set up an auditing process, so that individuals can create items but must submit them for approval to the central office.



As soon as a student submits his or her test, reporting data is available. The data can be seen at the district, school, teacher, section, or student level. By default, subgroup pass rates are shown. All of these red/green bars are clickable, and doing so brings up a printable/exportable report of those students.

The standard and item analysis tab shows trends in how students performed. Users can dive in to see weak standards and item analysis. Item analysis empowers teachers to investigate and drill into questions to gain a better sense of student understanding, or lack of understanding. What is important on this screen is that it shows aggregated views of student performance: performance by question, by assessment. This allows administrators to gain insights into whether curriculum adjustments need to be made.

Similar to the student growth reports, this is the same report but run for teachers and shows the percentage of their students achieving and hitting/exceeding/missing their growth targets. The calculations are based on the districts or schools setting growth and achievement ratings. This report then illustrates a teacher's actual teaching proficiency, which helps a school and district effectively manage their human resources and professional development as well as conduct teacher evaluations using consistent and accurate data.



PowerSchool Assessment

PowerSchool Assessment is a comprehensive platform designed to support a broad range of district assessment needs. PowerSchool Assessment is aligned to standards and curriculum to ensure districts accomplish tight alignment across standards. The analysis and application of formative assessment data as part of a continuous improvement model is a powerful way to improve student achievement. In order to realize the highest impact, it is imperative that formative assessment data be timely and easily accessible.



PowerSchool Assessment provides data in real time through reports designed by educators, for educators.



Standards Alignment

Using an assessment tool that begins with teacher selection of taught standards and skills and ends with reporting on the taught standards and skills allows educators and students to understand their areas of strength and weakness. Teachers working collaboratively to determine the intended learning outcomes from instruction, grounded in state and local standards and resources outlined in local curricula, creates tight alignment between standards, curriculum, instruction and assessment. This alignment builds teacher and student confidence in the inferences drawn from assessment data. Teachers are able to use PowerSchool Assessment to immediately inform their instructional practice to improve student performance. Driving student engagement, students can set or modify their existing learning goals based on their individual performance data with the knowledge of exactly where they need support to achieve those goals.

Content Options

Today's high-stakes assessments are no longer 'bubble sheet' only. Next generation assessments are online and include multiple item types. PowerSchool Assessment is a content neutral platform that supports many different types and sources of test items. Users may create and deliver assessments utilizing many combinations of item types and content providers.

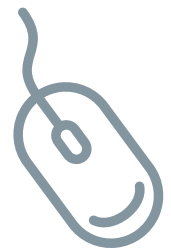
Item Types Supported:

Technology-enhanced (TE) items

- Dragging and dropping
- Sorting and ordering
- Single line response (fill in the blank)
- Hot spot

Constructed response

Multiple choice



PowerSchool Assessment supports the import of, and alignment to, a wide variety of standards.

Those standards include, but are not limited to:

**Common Core
State Standards**

**State Specific
Learning Standards**

**Next Generation
Science Standards**

**Career and Technical
Education Standards
and Competencies**

**Locally Developed
Standards**

Content Providers:



Assessment



GradeResults

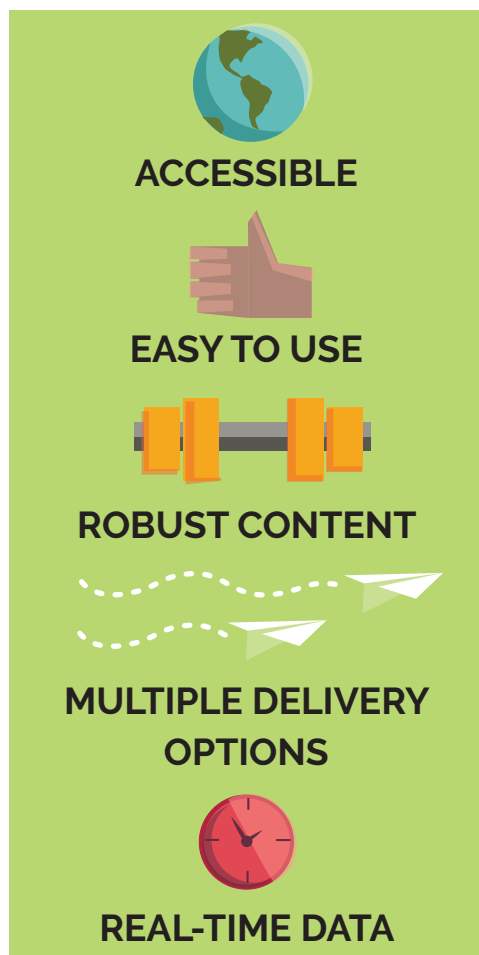


PASSAGEBANK

TESTS FOR
HIGHER STANDARDS



PowerSchool Assessment supports a balanced assessment system that allow the effective use of formative, interim, and summative measures of student performance that address student needs immediately, informing instruction and guiding continuous educational improvement.



Formative and Interim Assessment

Formative and interim assessment is one of the most powerful ways to identify student instructional needs, inform instruction, and guide the continuous educational improvement cycle.

PowerSchool Assessment is a robust and comprehensive platform that supports formative and interim assessment needs of a district or school.

District Summative and Growth Assessments

PowerSchool Assessment supports end-of-course exams and district level summative assessment needs. Additionally, PowerSchool Assessment is a powerful tool for administering common Student Learning Objective (SLO) assessments, capturing results, and displaying a student's growth and achievement. Providing a platform for principals and teachers to co-create the student growth assessment, PowerSchool gives teachers and principals control over the evaluation process.

Assessment Delivery Methods

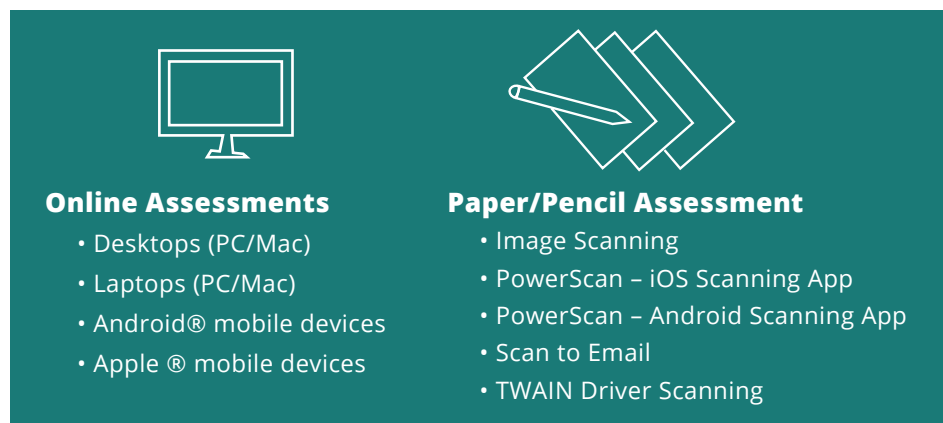
PowerSchool applies technology guidelines defined by The Partnership for the Assessment of Readiness of College and Careers (PARCC) and the Smarter Balanced Assessment Consortium (SBAC). Additionally, PowerSchool aligns the platform to meet multiple state-specific technology requirements for those states that may not be part of the PARCC or SBAC consortiums.

PowerSchool Assessment has a very intuitive online testing interface that is delivered through an multi-platform application - PowerTest™. The only requirements are an internet connection and browser for immediate access. The PowerTest platform was developed so that the testing session remains available after the initial launch of the test so that students can complete their test even if the internet connection breaks in the middle of their test session.*

**Re-connection is required for final submission.*

On-line Test-Taking Features:

- | | |
|---------------|----------------|
| ✓ Highlighter | ✓ Protractor |
| ✓ Review Flag | ✓ Pencil |
| ✓ Calculator | ✓ Compass |
| ✓ Selector | ✓ Eraser |
| ✓ Ruler | ✓ Straightedge |
| ✓ Eliminator | |





LOUISIANA Academic Content Coverage



PowerSchool Assessment is a content neutral platform that supports many different types and sources of test items. Users may create and deliver assessments utilizing many combinations of item types and content providers.

Item Types

Today's high-stakes assessments are no longer "bubble sheet" only. The assessments are primarily online and include multiple item types. PowerSchool Assessment mirrors today's assessments and supports the following item types:

- ⚡ Technology Enhanced Items
- ⚡ Constructed Response Items
- ⚡ Multiple Choice Items

PowerSchool Assessment allows for the creation of Technology Enhanced Items and Constructed Response Items. Teachers can create and share an unlimited number of these new and more rigorous item types.

Item and Assessment Banks

In addition to creating local content, **PowerSchool Assessment** users may select from a menu of available content options. Item Banks and Assessment Banks may be added to **PowerSchool Assessment** in any combination for any subject and grade level.

CCSS ENGLISH



GRADE	ITEMS	TEI ⚡
K	389	72
1	424	131
2	352	129
3	828	202
4	734	152
5	595	152
6	544	172
7	590	162
8	658	209
9-10	732	189
11-12	440	201
TOTAL	6,286	1,771

CCSS MATH



GRADE	ITEMS	TEI ⚡
K	285	69
1	233	62
2	471	93
3	561	84
4	865	112
5	466	106
6	810	139
7	658	125
8	626	121
9-12	2117	569
TOTAL	7,092	1,480

GLE Social Studies



GRADE	ITEMS	TEI ⚡
K	219	33
1	168	27
2	223	63
3	252	133
4	335	171
5	227	93
6	412	91
7	418	137
8	183	132
WH&G	355	117
E	473	72
USG&C	234	41
USH&G	454	76
TOTAL	3,953	1,186

GLE SCIENCE



GRADE	ITEMS	TEI ⚡
K	220	73
1	224	112
2	371	133
3	394	184
4	430	218
5	520	272
6	494	245
7	521	222
8	657	266
SCI-PH	379	196
SCI-ES	78	47
SCI-BIO	325	167
SCI-CH	192	43
SCI-ENVS	48	26
SCI-PS	6	0
TOTAL	4,859	2,204



67,808

Total Items

CERTICA
SOLUTIONS

LA ENGLISH



GRADE	ITEMS
K	866
1	1693
2	1351
3	2971
4	3393
5	3192
6	3263
7	2920
8	2886
9-10	3985
11-12	3070

TOTAL 29,590

LA MATH



GRADE	ITEMS
K	737
1	879
2	774
3	1390
4	2799
5	1440
6	2954
7	4176
8	1980
9-12	6959

TOTAL 24,088

LA SOCIAL STUDIES



GRADE	ITEMS
6	61
7	659
8	18
SS-C	980
SS-US	672
SS-WG	344
SS-WH	589

TOTAL 3,323

LA SCIENCE



GRADE	ITEMS
3	314
4	939
5	1407
6	917
7	1396
8	2136
SCI-BIO	1187
SCI-CH	759
SCI-ES	375
SCI-PH	338
SCI-PS	1039

TOTAL 10,807

27,585

Total Items

inspect
Instruct. Inform. Increase.

LA CCSS ELA



GRADE	ITEMS	CR
K	229	1
1	691	13
2	1023	19
3	1472	150
4	1723	103
5	1332	110
6	1149	168
7	833	179
8	799	152
9-10	1454	187
11-12	456	152

TOTAL 11,161 1,234

LA CCSS MATH



GRADE	ITEMS	CR
K	306	34
1	680	79
2	928	21
3	1910	144
4	2708	139
5	1808	168
6	2447	345
7	1518	317
8	1287	74
9-12	2832	276

TOTAL 16,424 1,597

CR = Constructed Response

PowerSchool Analytics

PowerSchool Analytics is a longitudinal data system designed to help educators make data-driven decisions about instruction, curriculum, and professional development. Visual illustrations and comparative analysis of long-term academic performance, state data, attendance data, and intervention data provide insights to inform decisions. Educators can address areas that need additional support for both students and teachers, and helps identify areas of weakness at the school, district, or classroom level.

PowerSchool Analytics a comprehensive, web-based, vendor hosted solution provided as a Software as a Service (SaaS) offering – requiring no installation by the district. The PowerSchool platform is capable of integrating securely and seamlessly with the district through both automated data management and manual data manipulation.

Every stakeholder involved (district, school and teacher) gets a full 360° view of student progress to ensure that all students have the greatest chance to succeed. PowerSchool Analytics empowers teachers and helps improve student growth by assisting teachers and administrators in making data-driven curriculum decisions in an effort to raise student achievement. The analysis and application of formative assessment data as part of a continuous improvement model is a powerful way to improve student achievement. Make data timely and accessible for your students, teachers, and administrators through a platform that is easy-to-use, well supported, and highly adopted.

PowerSchool Analytics empowers and enables district administrators, school administrators, teachers, students and parents to make good decisions regarding each student's educational needs. PowerSchool offers an integrated student data system that supports long-term growth and achievement.



Identify trends, discover areas of weakness, and understand growth areas so you can better plan and allocate resources, helping you improve education and achievement.



Incorporate data, reporting, and graphs into your management to improve performance in your district. Identify, foster, and develop school strengths and improve upon areas needing growth.



Common Language. The customizable Performance Snapshot promotes the district to set performance levels and speak the same language when identifying thresholds.



Understand what is actually going on at your school and district. Data visualization helps to identify strengths and weaknesses.



Empower teachers with tools to truly understand how their students and classes are learning and progressing.



Help students celebrate their accomplishments when they reach one of their learning goals.



Great schools help their teachers to grow, too. Set goals for teachers, and give them tools to track their progress with the touch of a button.



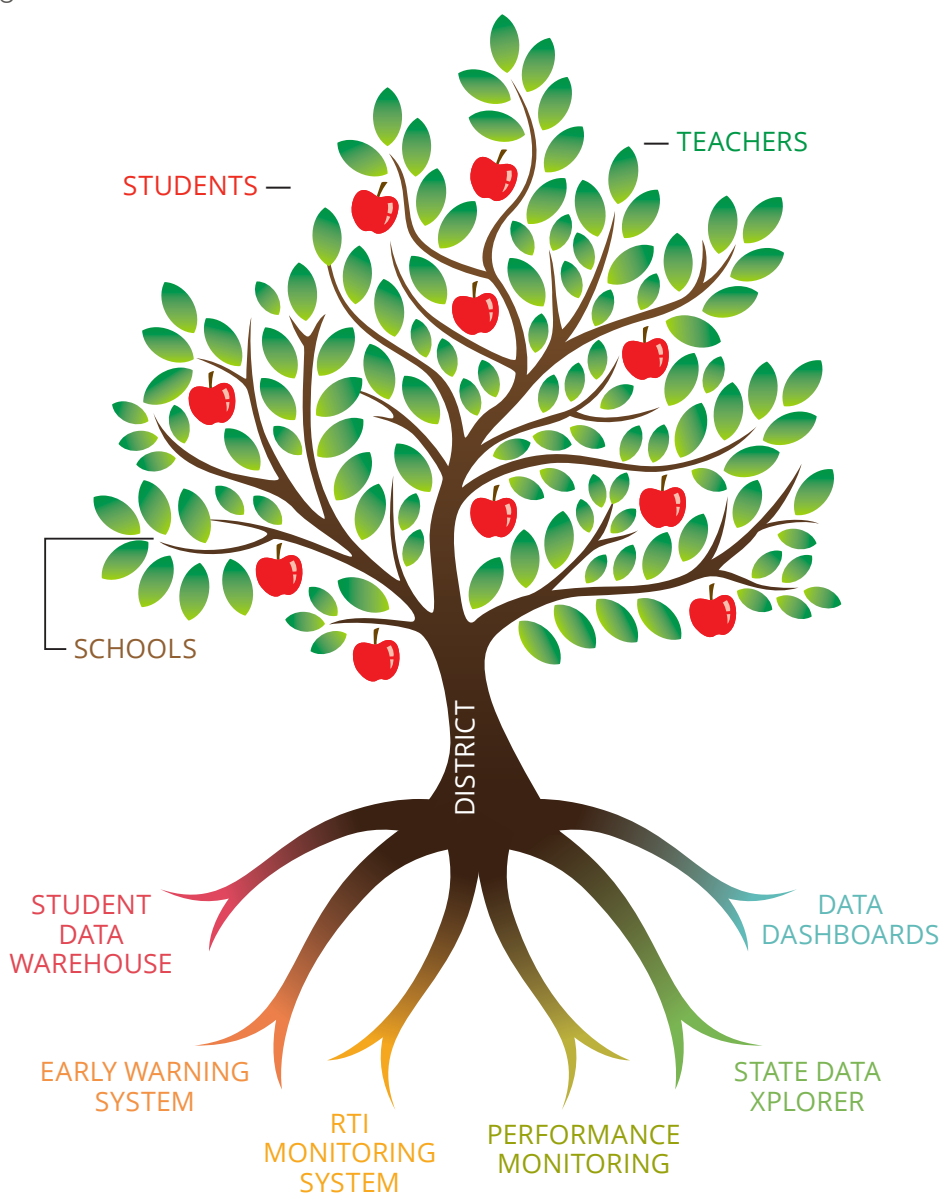
Clear data illustration and easy reporting so teachers spend less time manipulating data and more time improving instruction.

PowerSchool Analytics



PowerSchool Analytics places essential data in administrators' and teachers' hands to provide a personalized learning plan for every student.

The Analytics module gives you tools like intervention tracking, behavior and attendance monitoring, and easy analysis of assessment data. Every stakeholder involved (district, school and teacher) gets a full 360° view of student progress to ensure that all students have the greatest chance to succeed.



Student Data Warehouse

This warehouse stores and organizes all student data. Everything from grades and state assessment data to discipline and attendance is accessible in one place.

Early Warning System

Use data to identify at-risk students by monitoring key indicators and quickly identifying intervention needs.

RTI Monitoring System

Progress monitoring coupled with focused instruction provides the power to help mitigate challenges before they become firmly established.

Performance Monitoring

Monitor the effectiveness of assigned interventions with district, school, class, and teacher views. PowerSchool Analytics watch lists and meet state school performance reporting needs.

State Data Xplorer

The State Data Xplorer is a powerful tool within the module that replaces spreadsheets with vibrant, colorful and easy-to-interpret data visualizations of state assessment data. It seamlessly converts raw state data into interactive, high-impact reports for educators to provide insights and identify trends into student learning outcomes.

Data Dashboards

Replace the filing cabinets with an easy-to-view, robust system that allows you to view a student's entire academic history in one organized and simple-to-navigate place.

PowerSchool Analytics empowers and enables district administrators, school administrators, teachers, students and parents to make good decisions regarding each student's educational needs. PowerSchool offers an integrated student data system that supports long-term growth and achievement.

District

- Easily monitor and comply with state and federal reporting needs
- Access a side-by-side comparison of school, teacher and student performance in your district
- Track effectiveness of district formative assessments
- Monitor the effectiveness of assigned interventions
- Determine the most effective Response to Intervention (Rtl) programs and tools
- Identify and execute strategies to support professional growth in school leadership

Schools

- Easily meet district reporting and Individualized Education Program (IEP) requirements
- Identify teacher effectiveness and opportunities for professional development and training
- Access student data in a centralized dashboard
- Interpret and analyze complex student data from disparate sources
- Track attendance and discipline trends
- Monitor students with special needs with watch-list creation and monitoring
- Evaluate effectiveness of common formative assessments
- Determine most effective Rtl programs

Teachers

- Track and manage student data in one centralized place
- Create and monitor watch lists
- Seamless IEP meeting reporting
- Record and view intervention notes for each student
- Easily maintain achievement records for grades pre K through 12
- Monitor effectiveness and assignment of interventions
- Track IEP correspondence with parents

Students

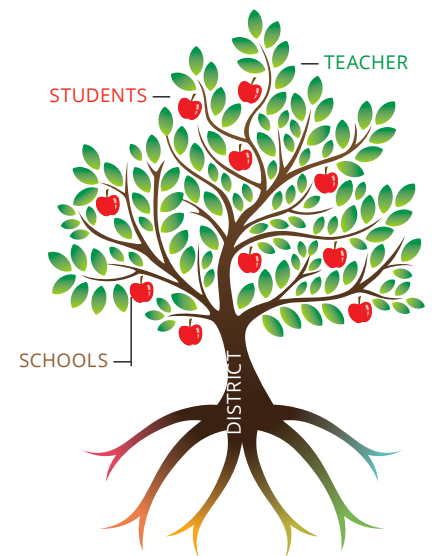
- Empower students to succeed by offering clear direction of their progress and goals
- Set and pursue learning targets and goals
- Support and plan strategies and goals with teacher/team
- Assess remediation and enrichment needs
- Share student progress in parent-teacher conferences

“The [module] is a tremendous tool for providing an overview of the ‘whole child’ so that we can make better decisions that truly help students.”

– Julie Craft
Instructional Technology
Coordinator
Montgomery Co. Public Schools

It’s that effort to work smarter, not harder. The old days of scrutinizing spreadsheets and raw data are over because of the ability to bring all of the data together at one central point.

– Dr. Joni Poff
Director of Instruction
Botetourt County Public Schools



Section III: Implementation, Training, and Support

Requirement

- a) **Implementation** - Please describe your company's commitment and ability to providing a broad range of implementation resources, project management services, assistance with transition from our current system to your solution, scheduling and timeframes for implementation. The response should provide the needed assurance that your company has the resources and expertise required to perform the contract successfully.

Response



Assessment & Analytics

What Happens During your PowerSchool Assessment and Analytics Launch? An Overview and Checklist

Kickoff Meeting

Description: An initial meeting between key district contacts and the PowerSchool Assessment and Analytics implementation team. We will work to gather information needed for site creation and customization as well as answer any questions you have about implementation steps!

Estimated Time Frame: A 1 hour remote meeting

Important Steps for PowerSchool to Complete	Important Steps for Your Team to Complete
<input type="checkbox"/> Schedule and conduct a Launch kickoff meeting	<input type="checkbox"/> Identify district implementation team (liaison, data admin, and primary tech contact) <input type="checkbox"/> Attend and participate in the Launch kickoff

Create & Customize Your PowerSchool Assessment and Analytics Site

Description: The PowerSchool Assessment and Analytics implementation team will use the information provided in your Launch kickoff to create your site and customize features.

Estimated Time Frame: 1 business day after Launch Kickoff meeting is complete

Important Steps for PowerSchool to Complete	Important Steps for Your Team to Complete
<input type="checkbox"/> Create district and schools in PowerSchool Assessment & Analytics <input type="checkbox"/> Add content (items/exams) <input type="checkbox"/> Activate selected academic standards <input type="checkbox"/> Customize preferences and features <input type="checkbox"/> Update default permissions if needed <input type="checkbox"/> Manually create user accounts for liaisons, data admins, and primary technical contacts and add District Admin permissions	<input type="checkbox"/> Use registration email to log in and establish password (liaisons, data admins, and primary technical contacts) <input type="checkbox"/> Use "Get to Know Your Site" document to verify site set-up and to begin to get acquainted with the software

Complete Technical Implementation

Description: PowerSchool Assessment and Analytics software is web-based and technical implementation steps are minimal! The PowerSchool team will provide detailed tech specs and asks that your primary technical contact work with any needed district staff to verify that all steps are complete and that student and staff devices are compatible with PowerSchool Assessment and Analytics.

Estimated Time Frame: Varies according to district; 1-2 weeks recommended

Important Steps for PowerSchool to Complete	Important Steps for Your Team to Complete
<input type="checkbox"/> Provide tech spec documentation and PowerTest info to liaisons and primary technical contacts	<input type="checkbox"/> Review tech specs <input type="checkbox"/> Complete whitelisting <input type="checkbox"/> Verify device/browser/network compatibility <input type="checkbox"/> Configure PowerTest

Populate Foundational Data

Description: School, student, staff, course, and roster data is added to PowerSchool Assessment and Analytics in your initial data sync. This foundational data is pulled from your SIS with the assistance of our data integration partner, Clever. Automatic and SFTP options are available, depending on your SIS and your preferences.

Estimated Time Frame: 1-3 business days after data is successfully populated in the Clever dashboard (time to populate Clever dashboard varies by district, recommended time frame ≤ 1 week)

Important Steps for PowerSchool to Complete	Important Steps for Your Team to Complete
<input type="checkbox"/> Provide Clever overview and signup information to liaisons and data admins <input type="checkbox"/> Notify Clever District Partnerships team of new data integration <input type="checkbox"/> Manually create district/school admin accounts (if including admin in data upload is not possible) <input type="checkbox"/> Perform initial PS/Clever data sync & mapping <input type="checkbox"/> Complete course mapping	<input type="checkbox"/> Create Clever account, populate Clever dashboard, and share data with PowerSchool <input type="checkbox"/> Work with Clever District Partnerships and/or Clever Support for Clever data integration <input type="checkbox"/> Provide an Excel doc list of admin accounts to be manually created (if including admin in data upload is not possible)

Open PowerSchool Assessment Access to Staff

Description: Once all site creation, technical implementation, and data integration steps have been completed you'll be ready to open up Assessment access to your teachers and staff! This will allow your staff to begin creating and administering assessments while your implementation team turns attention to implementation steps for Analytics.

Important Steps for PowerSchool to Complete	Important Steps for Your Team to Complete
<input type="checkbox"/> Create and/or update staff permission groups according to submitted customization forms <input type="checkbox"/> Instruct liaison(s) in how to assign staff to staff permission groups <input type="checkbox"/> Send registration emails to all staff accounts created in data upload (immediately or on requested date)	<input type="checkbox"/> Submit any needed permissions customization forms <input type="checkbox"/> Assign admin and other staff to staff permission groups as needed <input type="checkbox"/> Provide any needed information to your staff regarding PowerSchool Assessment and registration prior to registration emails

**Populate Student Data Points***

Description: PowerSchool Analytics supports a variety of student data points. The method and frequency of populating data points is dependent on the specific data type. The PowerSchool team will review steps for populating student data and provide you with an opportunity to consult with an expert as you begin working to add your student data!

Estimated Time Frame: Varies by district; 2-3 weeks recommended

Important Steps for PowerSchool to Complete	Important Steps for Your Team to Complete
<input type="checkbox"/> Provide instruction and resources for creating Analytics terms, flagging benchmarks, and uploading student data points <input type="checkbox"/> Schedule and complete a data consultation with district data admin(s)	<input type="checkbox"/> Create Analytics terms <input type="checkbox"/> Flag benchmarks in Assessment Library <input type="checkbox"/> Review Analytics Data Upload Instructions <input type="checkbox"/> Schedule and complete a data consultation <input type="checkbox"/> Upload PALS, WIDA, GRADE, MAP and/or CogAT <input type="checkbox"/> Extract and upload SIS data files <input type="checkbox"/> Automate data uploads as desired

Customize Analytics Admin Features*

Description: Once student data has been populated, you can begin to use the powerful reporting features of PowerSchool Analytics! Mapping discipline codes and creating reporting metrics will allow discipline data to display appropriately and allow users to run Performance Snapshots.

Estimated Time Frame: Varies by district; 1 week recommended

Important Steps for PowerSchool to Complete	Important Steps for Your Team to Complete
<input type="checkbox"/> Provide instruction in how to map discipline codes and create reporting metrics (webinar or video)	<input type="checkbox"/> Map discipline codes <input type="checkbox"/> Create reporting metrics

Set Up Intervention Features*

Description: PowerSchool Analytics features a distinctive Interventions module, allowing teachers and staff to track the assignment and administration of interventions for students. Establishing areas of eligibility provides quick identification of students who would most benefit from intervention (based on existing data), while creating intervention categories and programs ensures that the interventions available to assign and track are customized to your district need.

Estimated Time Frame: Varies by district; 1-2 weeks recommended

Important Steps for PowerSchool to Complete	Important Steps for Your Team to Complete
<input type="checkbox"/> Provide instruction in how to establish areas of eligibility for interventions and create intervention programs/categories (webinar or video)	<input type="checkbox"/> Establish areas of eligibility for interventions <input type="checkbox"/> Create intervention programs and categories

Open Analytics Access to Staff*

Description: Access to Analytics features is permissions dependent, so district staff will gain access to Analytics features when permissions are added to their staff group. We'll work together to determine which permissions you'd like added to each of your existing staff groups and schedule a date to open up access!

Important Steps for PowerSchool to Complete	Important Steps for Your Team to Complete
<input type="checkbox"/> Update default Analytics permissions if needed according to district customization requests <input type="checkbox"/> Add default (or customized) Analytics permissions to existing staff groups	<input type="checkbox"/> Review default Analytics permissions and request any needed customization <input type="checkbox"/> Authorize PS to add default (or customized) Analytics permissions to existing staff groups

* Analytics features must be activated by the PowerSchool development team before completing these implementation steps. Time estimates for activation vary- consult your implementation coordinator for more information.



What Happens During your PowerSchool Assessment and Analytics Implementation?

An Overview and Checklist

✓ Important Steps for PowerSchool to Complete

Kickoff Meeting

🕒 1 HR remote meeting

In this initial meeting between key district contacts and the PowerSchool Assessment and Analytics implementation team, we'll work to gather information needed for site creation and customization as well as answer any questions you have about implementation steps!

- ❑ Schedule and conduct a kickoff meeting

- ❑ Identify district implementation team (liaison, data admin, and primary tech contact)
- ❑ Attend and participate in a kickoff meeting

Create & Customize Your PowerSchool Assessment and Analytics Site

🕒 1 business day after Kickoff

The PowerSchool Assessment and Analytics implementation team will use the information provided in your Launch kickoff to create your site and customize features.

- ❑ Create district and schools in PowerSchool Assessment & Analytics
- ❑ Add content (items/exams)
- ❑ Activate selected academic standards
- ❑ Customize preferences and features
- ❑ Manually create user accounts for liaisons, data admins, and primary technical contacts and add District Admin permissions

- ❑ Use registration email to log in and establish password (liaisons, data admins, and primary technical contacts)
- ❑ Use "Get to Know Your Site" document to verify site set-up and to begin to get acquainted with the software

Complete Technical Implementation

🕒 Varies by district; 1-2 weeks recommended

PowerSchool Assessment and Analytics software is web-based and technical implementation steps are minimal! The PowerSchool team will provide detailed tech specs and asks that your primary technical contact work with any needed district staff to verify that all steps are complete and that student and staff devices are compatible with PowerSchool Assessment and Analytics.

- ❑ Provide tech spec documentation and PowerTest info to liaisons and primary technical contacts

- ❑ Review tech specs
- ❑ Complete whitelisting
- ❑ Verify device/browser/network compatibility
- ❑ Configure PowerTest

✓ Important Steps for Your Team to Complete



Assessment & Analytics

✓ Important Steps for PowerSchool to Complete

Populate Foundational Data

⌚ 1-3 business days after successful data population in Clever
(Clever population varies by district, recommended time ≤ 1 week)

School, student, staff, course, and roster data is added to PowerSchool Assessment and Analytics in your initial data sync. This foundational data is pulled from your SIS with the assistance of our data integration partner, Clever. Automatic and SFTP options are available, depending on your SIS and your preferences.

- ❑ Provide Clever overview and signup information to liaisons and data admins
- ❑ Notify Clever District Partnerships team of new data integration
- ❑ Manually create district/school admin accounts (if including admin in data upload is not possible)
- ❑ Perform initial PS/Clever data sync & mapping
- ❑ Complete course mapping
- ❑ Create Clever account, populate Clever dashboard, and share data with PowerSchool
- ❑ Work with Clever District Partnerships and/or Clever Support for Clever data integration
- ❑ Provide an Excel doc list of admin accounts to be manually created (if including admin in data upload is not possible)

Open PowerSchool Assessment Access to Staff

Once all site creation, technical implementation, and data integration steps have been completed you'll be ready to open up Assessment access to your teachers and staff! This will allow your staff to begin creating and administering assessments while your implementation team turns attention to implementation steps for Analytics.

- ❑ Create and/or update staff permission groups according to submitted customization forms
- ❑ Instruct liaison(s) in how to assign staff to staff permission groups
- ❑ Send registration emails to all staff accounts created in data upload (immediately or on requested date)
- ❑ Submit any needed permissions customization forms
- ❑ Assign admin and other staff to staff permission groups as needed
- ❑ Provide any needed information to your staff regarding PowerSchool Assessment and registration prior to registration emails

Populate Student Data Points*

⌚ Varies by district; 2-3 weeks recommended

PowerSchool Analytics supports a variety of student data points. The method and frequency of populating data points is dependent on the specific data type. The PowerSchool team will review steps for populating student data and provide you with an opportunity to consult with an expert as you begin working to add your student data!

- ❑ Provide instruction and resources for creating Analytics terms, flagging benchmarks, and uploading student data points
- ❑ Schedule and complete a data consultation with district data admin(s)
- ❑ Create Analytics terms
- ❑ Flag benchmarks in Assessment Library
- ❑ Review Analytics Data Upload Instructions
- ❑ Schedule and complete a data consultation
- ❑ Upload PALS, WIDA, GRADE, MAP and/or CogAT
- ❑ Extract and upload SIS data files
- ❑ Automate data uploads as desired

✓ Important Steps for Your Team to Complete



Assessment & Analytics

✓ Important Steps for PowerSchool to Complete

Customize Analytics Admin Features*

⌚ *Varies by district; 1 week recommended*

Once student data has been populated, you can begin to use the powerful reporting features of PowerSchool Analytics! Mapping discipline codes and creating reporting metrics will allow discipline data to display appropriately and allow users to run Performance Snapshots.

- ☐ Provide instruction in how to map discipline codes and create reporting metrics (webinar or video)

- ☐ Map discipline codes
- ☐ Create reporting metrics

Set Up Intervention Features*

⌚ *Varies by district; 1-2 weeks recommended*

PowerSchool Analytics features a distinctive Interventions module, allowing teachers and staff to track the assignment and administration of interventions for students. Establishing areas of eligibility provides quick identification of students who would most benefit from intervention (based on existing data), while creating intervention categories and programs ensures that the interventions available to assign and track are customized to your district's need.

- ☐ Provide instruction in how to establish areas of eligibility for interventions and create intervention programs/categories (webinar or video)

- ☐ Establish areas of eligibility for interventions
- ☐ Create intervention programs and categories

Open Analytics Access to Staff*

Access to Analytics features is permissions dependent, so district staff will gain access to Analytics features when permissions are added to their staff group. We'll work together to determine which permissions you'd like added to each of your existing staff groups and schedule a date to open up access!

- ☐ Update default Analytics permissions if needed according to district customization requests
- ☐ Add default (or customized) Analytics permissions to existing staff groups

- ☐ Review default Analytics permissions and request any needed customization
- ☐ Authorize PS to add default (or customized) Analytics permissions to existing staff groups

✓ Important Steps for Your Team to Complete

* Analytics features must be activated by the PowerSchool development team before completing these implementation steps. Time estimates for activation vary- consult your implementation project manager for more information.

Each implementation project is led by a dedicated PowerSchool Project Manager and includes periodic check-ins and consultation.

For more information about PowerSchool Assessment and Analytics, please visit our website at www.PowerSchool.com, or call 877.873.1550

Requirement

- b) **Training** - Please describe your recommended training services and options for our staff, and a description of training methodology.

Response

Comprehensive, in-person training is provided to PowerSchool Assessment clients as part of the Implementation process. All users also have access to scheduled webinars, user conferences, archived online trainings, and additional videos and other training materials accessible at no charge. To build upon initial trainings, follow-up training is available for purchase from PowerSchool Group's experienced trainers and Professional Development experts. These subsequent trainings can be customized according to need and audience, and at the convenience of Natchitoches Parish School Board.

Please see the flyer provided at the end of this section for more information on our available training options.

Requirement

- c) **Ongoing Support** – End user support should be provided at no additional charge. Please describe your company's levels of support services for day to day operations.

Response

Once PowerSchool Assessment is fully implemented, PowerSchool Group is committed to providing support to help our clients in a way that best complements their needs. Support is available to users during the school day while educators are actively engaged on the platform, Monday – Friday, 6 a.m. to 5 p.m. CST. As educators, we understand the time constraints in the classroom, so there is never a wait time to speak with a PowerSchool Assessment Live representative. We provide assistance while in the classroom, addressing your questions quickly so that you can continue teaching.

PowerSchool Assessment Live allows end users to share their screen with the support representative in an effort to quickly diagnose the issue at hand and effectively guide users through the necessary steps to accomplish their desired task. Our support team will help you in any way that is convenient for your environment. Our goal is to give teachers assistance without disrupting their day-to-day responsibilities and attention to their students. End users can connect with PowerSchool Assessment Live via online chat and screen share, email, or telephone.



Assessment & Analytics

RECOMMENDED PRODUCT TRAINING

ONSITE TRAINING



To ensure the highest level of utilization of the software possible, we recommend that each school participates in a ½ day of onsite basics training for each product.

YEAR ONE



3HR SESSION

Basics

SCHOOL

YEAR TWO



3HR SESSION

Advanced

SCHOOL

3HR SESSION

Basics
Refresher

DISTRICT

YEAR THREE



3HR SESSION

Advanced

SCHOOL

3HR SESSION

Basics
Refresher

DISTRICT

ADVANCED TRAININGS

ITEM CREATION

BUILDING FORMATIVE ASSESSMENTS

USING DATA TO INFORM INSTRUCTION

INTERVENTION SET UP FOR ADMINISTRATORS

INTERVENTION PROGRESS MONITORING

REMOTE TRAINING



Remote sessions are based on an 8 hour day. Basic Trainings are 4 hours, Advanced Trainings are 2 hours.

YEAR ONE



2 - 2HR SESSION

Basics

SCHOOL

YEAR TWO



1 - 2HR SESSION

Advanced

SCHOOL

2 - 2HR SESSION

Basics
Refresher

DISTRICT

YEAR THREE



1 - 2HR SESSION

Advanced

SCHOOL

2 - 2HR SESSION

Basics
Refresher

DISTRICT

PD+ ACCESS



Enjoy access to unlimited webinars with an annual subscription to PowerSchool's Professional Development Plus.

PD+



WEBINARS

Product Training Offering Descriptions

PRODUCT TRAINING ICONS

On-site
Session

Remote
Session

Recommended Training
1 2 3
per Year

PowerSchool Assessment Basic User Training

An interactive hands-on training session that covers all aspects of the PowerSchool Assessment user interface including Assessment Library, Testing Center, iTest, Reporting, and Help. The basic training is ideal for new users or anyone not previously trained by an expert trainer and can be customized by request for train-the-trainer groups and for school and district administrators.

Available:   Recommended:   

PowerSchool Assessment Advanced: Review & Extension

An interactive training, specifically designed for users who have completed the PowerSchool Assessment Basic User Training. Users will have the opportunity to discuss ways in which they are using the software, as well as their own personal successes and struggles. Users will receive sound advice and support from an expert trainer, and learn from each other in discussion activities and group work. Users should come prepared to share!

Available:  Recommended:  

PowerSchool Assessment Advanced: Item Creation

An in-depth look at each item format, including multiple-choice and technology enhanced items. Participants will learn how to create each item type through hands-on exercises including adding images, assigning Blooms and Webb's DOK, and how to troubleshoot item development.

Available:   Recommended:  

PowerSchool Assessment Advanced: Best Practices for Building Common Formative Assessments

A brief overview of assessment creation kicks off this collaborative work session. Users will receive targeted Assessment Library training covering assessment creation options. All remaining time will be dedicated to a supervised work session in which the IA trainer provides support and troubleshooting for staff as they create assessments. This session is perfect for groups creating common assessments.

Available:   Recommended:  

PowerSchool Assessment Advanced: Using Data to Inform Instruction

This session will explore the various options for assessing student achievement in PowerSchool Assessment. Participants will explore different ways to use the data to drive instruction, and focus on best practices for the available reports. The report focus will include the Overview, Grade Sheet, and Standard & Item Analysis. Participants may also use this session to look at Student Growth Reporting, and learn ways to assess student growth and achievement.

Available:   Recommended:  

PowerSchool Analytics Basic User Training DAY

An interactive training session in which participants will have hands-on experience with the PowerSchool Analytics user interface including Student Snapshot Reports, Performance Snapshot Reports, Report Builder, Interventions, and Achievement Records (VA only). The basic training is ideal for new users or anyone not previously trained by an expert trainer and can be customized by request for train-the-trainer groups and for school and district administrators.

Available:   Recommended:   

PowerSchool Analytics Basic User Training DAY

This full-day work session provides users with the opportunity to work through PowerSchool Analytics with a series of training, discussion, and real-world application activities. Users will work in their live site to better understand how to use the available data. Topics include Student Profiles, Performance Snapshots, Interventions, and Report Builder. This session uses the Train-the-Trainer model, and provides materials and support to help users train other members of their district.

Available:  Recommended:   

PowerSchool Analytics Advanced: Review & Extension

An interactive training, specifically designed for users who have completed the PowerSchool Analytics Basics Training. Users will have the opportunity to discuss ways in which they are using the software, as well as their own personal successes and struggles. Users will receive sound advice and support from an expert trainer, and learn from each other in discussion activities and group work. Users should come prepared to share!

Available:  Recommended:  

PowerSchool Analytics Advanced: Intervention Setup Made Easy (For Administrators)

Participants will learn a process for identifying and gathering information about intervention programs existing within the schools in their district and how to assign, organize and implement them to improve student performance. Users will create areas of eligibility by setting thresholds and learn how to enter their intervention programs and progress monitoring tools into PowerSchool Analytics. All remaining time will be dedicated to a supervised work session in which the expert trainer provides support and troubleshooting for staff as they build out their interventions programs.

Available:   Recommended:  

PowerSchool Analytics Advanced: Intervention Monitoring Made Easy (For Teachers)

Participants will learn the process for assigning, tracking and monitoring students that have been assigned to intervention programs. Users will learn how to identify students in need of an intervention and access data in one location. Discussion and application activities will allow for an interactive session!

Available:   Recommended:  

Section IV: Qualifications & References

To demonstrate our capacity, to date, PowerSchool Assessment has served 2,729 schools, 175,007 teachers, and 1.5 million students. Schools have delivered 2.5 million assessments with students answering more than 1 billion questions to date. These numbers are a testament to our highly effective, educator- and student-centered assessment system. The following four (4) references are from clients similar in scope and/or size to Natchitoches Parish School Board.

Reference #1

District Name:	Jefferson Parish Public Schools
District Address:	501 Manhattan Blvd, Harvey, LA 70058
District Size (# of students):	50,000 students
1st Point of Contact Name:	Debbie Cooper (Assessment), Chief Academic Officer
Telephone:	504-349-8540
Email:	Debra.cooper@jppss.k12.la.us
2nd Point of Contact Name:	Karen Herndon (Analytics), Executive Director of Testing
Telephone:	504-349-7604
Email:	Karen.Herndon@jppss.k12.la.us

Reference #2

District Name:	DeSoto Parish Schools
District Address:	201 Crosby Street, Mansfield, LA 71052
District Size (# of students):	5,000 students
Point of Contact Name:	Harriet Woodard, Coordinator of Student Learning
Telephone:	318-872-1198
Email:	Harriet.woodard@desotopsb.com

Reference #3

District Name:	Livingston Parish
District Address:	13909 Florida Blvd., P.O. Box 1130, Livingston, LA 70754
District Size (# of students):	1,900 students
Point of Contact Name:	Dawn Rush, Director of Curriculum
Telephone:	225-686-4237
Email:	Dawn.rush@lpsb.org

Reference #4

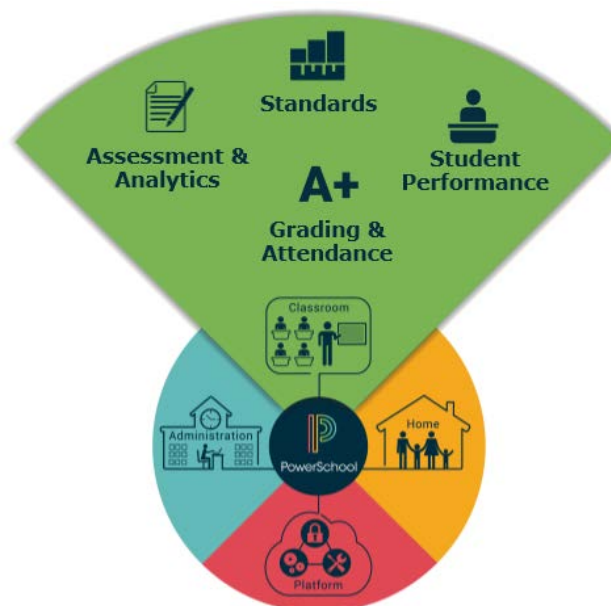
District Name:	Washington Parish – Varnado High School
District Address:	25543 Washington Street, Angie, LA 70426
District Size (# of students):	600 students
Point of Contact Name:	Jennifer Beninato, Principal
Telephone:	985-732-2025
Email:	jennifer.beninato@wpsb.org

Section V: Additional Information & Product Features

PowerSchool has consistently and reliably supported K-12 customers for nearly two decades and is the #1 leading provider of K-12 technology solutions used by more than 57 million users and over 17.5 million students around the world. We power school operations for over 6,000 school districts enabling secure, compliant, best-in-class processes and insights into school data. Our PowerSchool Roadmap promises continued advancements and investments, taking us well into 2017 and beyond with exciting new features and expanded functionality.

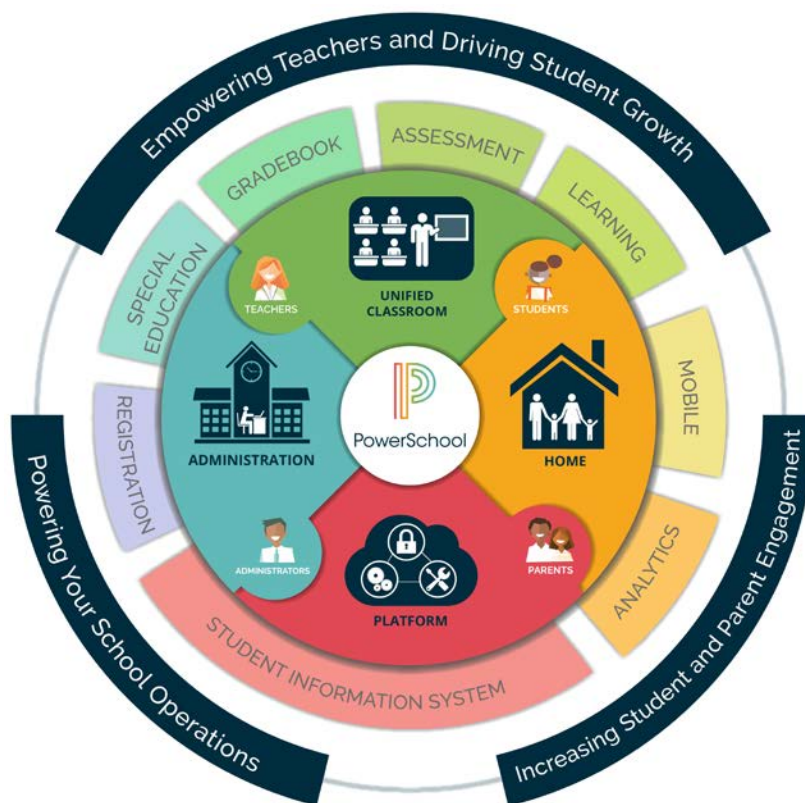
PowerSchool also offers our customers multiple optional solutions and services beyond those needed at this time to fulfill the requirements of your RFP, including those summarized at the end of this section: **PowerSchool Learning and PowerTeacher Pro**. These value-added solutions are components of PowerSchool's comprehensive K-12 platform, **integrated with PowerSchool Assessment and Analytics**. We are committed to improving the education experience through innovation and excellence so that you can power your school operations, empower teachers, drive student growth, and lead the education community. Our technology aims to:

- streamline assessment and reporting
- provide real-time, rich, and valuable insights into student performance that empower teachers to adjust instruction appropriately
- Reduce administrative burdens for grading and attendance
- Help teachers to truly understand where their students and classes are regarding standards, showing both growth and achievement



Unified Classroom Experience

PowerSchool is the industry's first unified classroom provider for teachers, students, and parents. We are one company with one vision to create one integrated solution in the K-12 classroom that shares data effectively and provides access to resources to manage all aspects of a student's learning process. Together, we are empowering teachers with one solution to improve instruction and learning in the classroom with unified, full-featured capabilities for attendance, lesson plans, grading, digital content, assignments, behavior, assessments, student performance, and student, parent, and teacher collaboration.

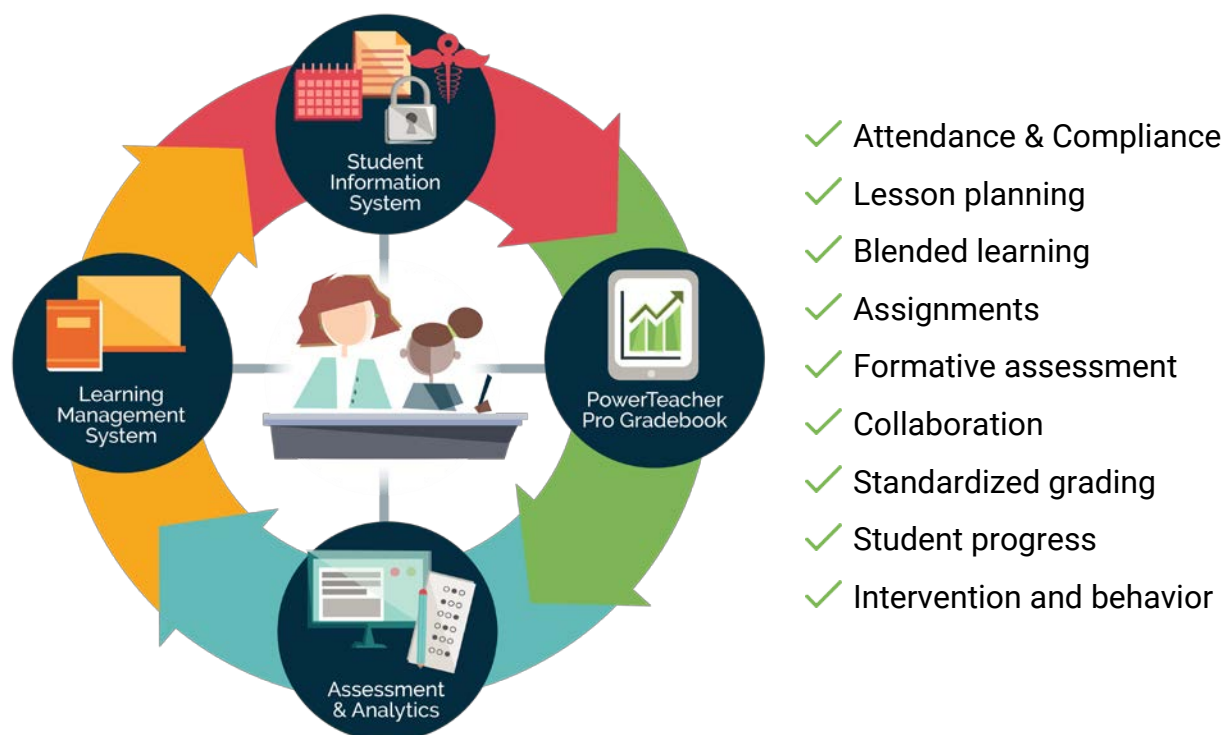


PowerSchool Comprehensive K-12 Platform

The PowerSchool unified classroom platform provides educators with a wide range of capabilities.

- **Unified engaging experience for teachers and students** – one unified system and user experience of record and engagement where all student, school and instructional information is managed and accessed from one portal on any device.
- **Enables blended and digital personalized learning** – intuitive delivery of digital instruction and learning embedded content from personal teaching artifacts, district resources and curriculum, standards, 3rd party content providers, and open education resources, such as YouTube, Google Docs, Skype, and dozens of other services.

- **Enables collaboration and communication across teachers, students, and parents** – streamlined communication with internal messaging system completely secure and spam-free; all collaboration required, such as reminders, announcements, assignments, grades and progress are shared via portal, text, or email to students and parents.
- **Insights to drive student growth and improve learning outcomes** – provides all stakeholders, educators, students, and families with a holistic view of a student's academic performance and all school-related information in one portal.
- **Quick rollout and lower total cost of ownership** – Districts and schools save significantly on the technology budget by leveraging a unified platform, eliminating the need to maintain, integrate, and report across multiple systems. Solution rollout and training for teachers and administrators is faster with wider adoption and impact.



PowerSchool's Unified Classroom Experience

Value-added Product Offerings

The following pages include brief overviews of a couple optional solutions that we feel would be of interest to the School Board at this time. These value-added solutions are components of PowerSchool's comprehensive K-12 platform, **integrated with PowerSchool Assessment and Analytics**, and will provide Natchitoches teachers with the tools they need to provide a more unified classroom experience for their students.

PowerSchool Learning

The most powerful force in education is the connection between teacher and student. This bond is what leads to both student empowerment and academic success. An unrivaled simplicity and intuitive interface allows teachers, students, and parents to spend less time learning the platform, and more time engaged in and with one another in the learning process.

Our learning management system occupies a very distinctive position in today's LMS market, as we are focused solely on the needs of K-12 schools and districts. PowerSchool Learning's powerful feature set is provided for your review below.

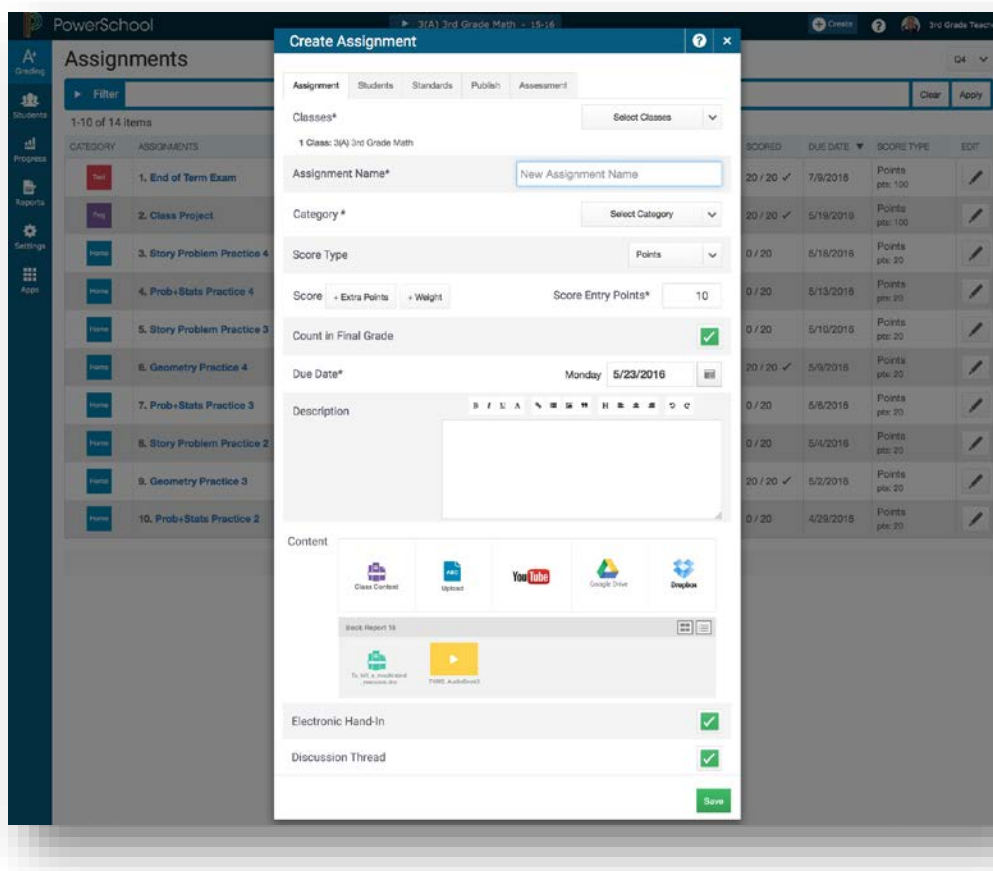
Features
Annotator. Write directly over the top of Word, Excel, PowerPoint and PDF files directly in the web browser.
Announcements. Post messages that students and parent can receive via text message, email, or directly within the system.
Assessments. Automatically grade quizzes and tests.
Assignments. Post homework (online and offline) that automatically populates into the gradebook.
Badging. Manage custom badges within your school. Teachers can award students with personal badges.
Browser-based Software. The system is hosted, so there is no hardware to own and no software to install beyond the browser.
Calendar. Quickly add events and assignments to the class calendar, and even display Google Calendars within a class.
Comments. Teachers and students can engage material and each other by adding comments to website pages and collaborative, student-created pages.
Common Cartridge (IMS) Imports. Bring in content from other IMS-compliant providers.
Multi-media Content. Upload Audio, Video (auto-encoded), Text, Files (all types), Links, and more to class web pages.
Discussion Board/Forum & Collaborative Content Creation. Students can collaborate in large or small groups.
Domain Control. Centrally manage accounts, domain configurations and other settings in this control panel.
Drag and Drop Course Design. Build public and private class websites using simple drag and drop organization.
Homework Repository. Students hand in homework electronically to an internal dropbox.
Embed Third-party Content and Widgets. Embed your content from VoiceThread, Flickr, Quizlet, and many more services.
ePortfolios. Showcase student work for reflective assignments and college preparation.
Equation Editor. Insert mathematical symbols for square root, infinity, null, and more anywhere you (and students) use the text editor.



Google Apps™. Integrate Single Sign On (SSO) for Google Apps Domain users, Google Docs, and Google Calendar.
Gradebooks (traditional and standards-based). Powerful integrated points-based and standards-based grading
Inbox. Send students and parents messages to their secure and spam-free inboxes.
Library. Your Library is a central repository for teachers to share and find content and activities.
LTI Activities. Bring in LTI-compatible third-party tools like Voicethread, Turnitin.com, Quizlet, Blackboard Collaborate and more as LTI Activities.
HTML. Publish small websites, including Java and Flash applications.
Navigation Bar. Get quickly to your users, classes, materials, grades, and more.
Notifications. Students, parents, and teachers choose how they want to receive word of updates: as email or SMS.
Progress Reports. Generate printer-friendly reports for traditional and standards-based grades.
Role-based Rosters. Easily populate classes by selecting a roster by role, grade level, and/or organization.
Roster Groups. Easily create student groups for collaboration in discussions and collaborative website creation projects.
Roster Sections. Manage assignments and other activities for several rosters of students from one class.
Rubrics. Easily author and associate quantitative or qualitative rubrics to make grading oh-so-simple.
School Portal. Each user sees a summary of assignments, announcements, grades, and so on from all of their classes.
SCORM. Play your SCORM modules directly in your class.
Shadowing. Grant individual users view-only access to organization, class, or student information.
Share content. Send copies of your course content to other teachers.
Standards-referenced Activities. Reference standards per-activity and assess mastery.
Statistics. Statistical information about users, content, and assessments.

Flexible and Easy to Use

PowerSchool Learning is consistently rated by users as the easiest-to-use teaching, learning, communication, and collaboration software in K-12. We earn this praise by placing content and activities in a logical context and packaging them as a lesson (opposed to the inconvenient compartmentalized folder structure). Understanding that teachers, not engineers, are best equipped to pilot a classroom—our platform is flexible at its core giving you the freedom to craft your own learning experience.



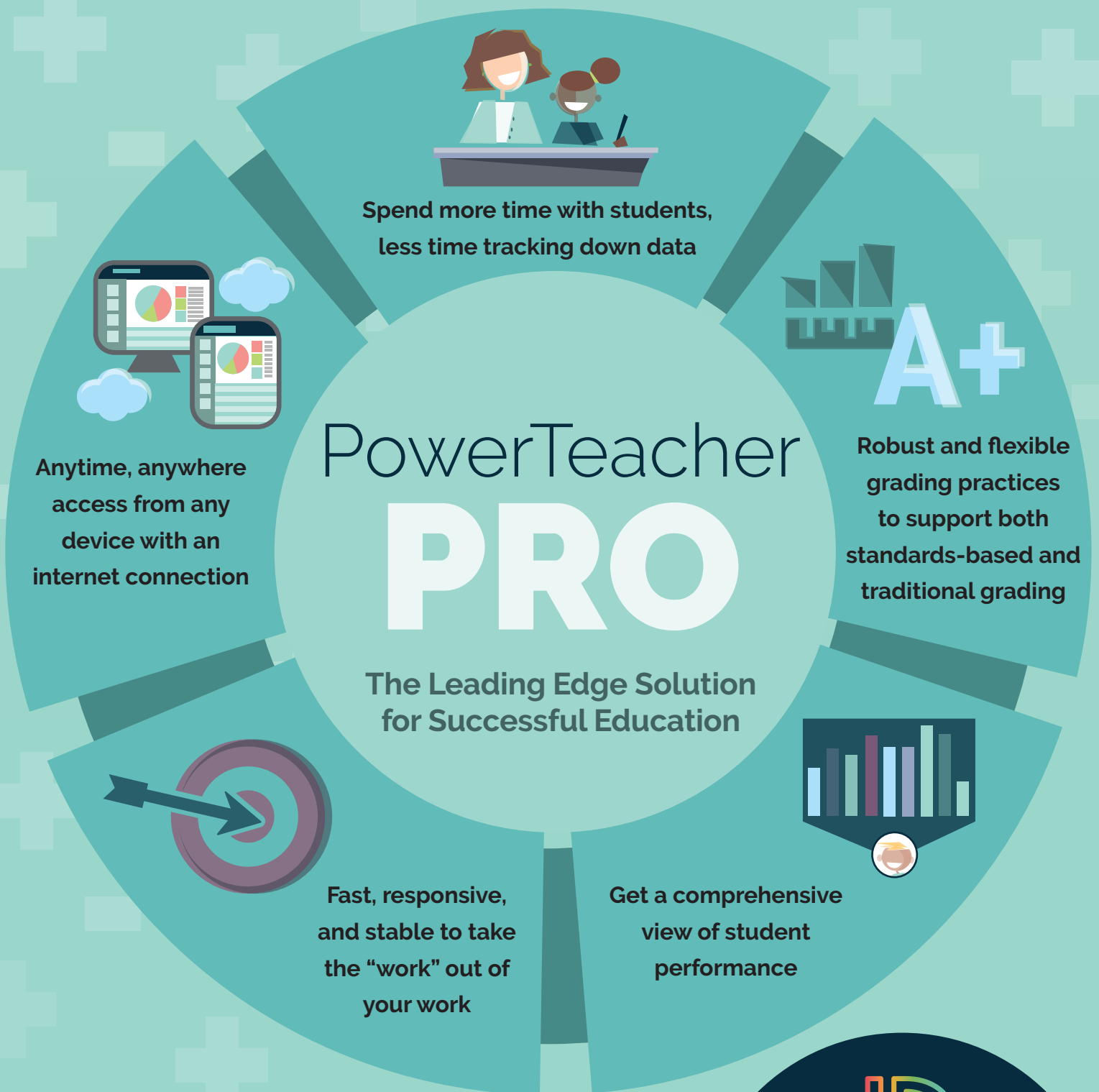
Assignments screen in PowerSchool Learning

Unapologetically K-12

Our learning management system is used almost exclusively by public and private K-12 schools and districts. Unlike many other LMS providers, more than 90% of our customers are in the K-12 education space; and our efforts will continue to focus on meeting the unique needs of a younger, less autonomous student that comprise this population for the foreseeable future. We understand that keeping K-12 students engaged requires educators to utilize differentiated instruction and personalized learning. Our unique blend of usability was built for this environment.

PowerTeacher Pro

Integration between PowerTeacher Pro and PowerSchool Assessment will start with Single Sign-On and developing data exchange. This will provide a more streamlined workflow for teachers. The integration between PowerSchool Assessment and PowerTeacher Pro will mean teachers can move seamlessly between PowerSchool Assessment and PowerTeacher Pro, saving time for teachers and providing an easier workflow. With PowerSchool, teachers do not have to manage multiple accounts, remember usernames or passwords, and spend time switching among applications. Our seamless workflow means you do not have to interrupt what you are doing to change applications in interfaces.



Endorsed Exclusively by Ken O'Connor, the Grade Doctor

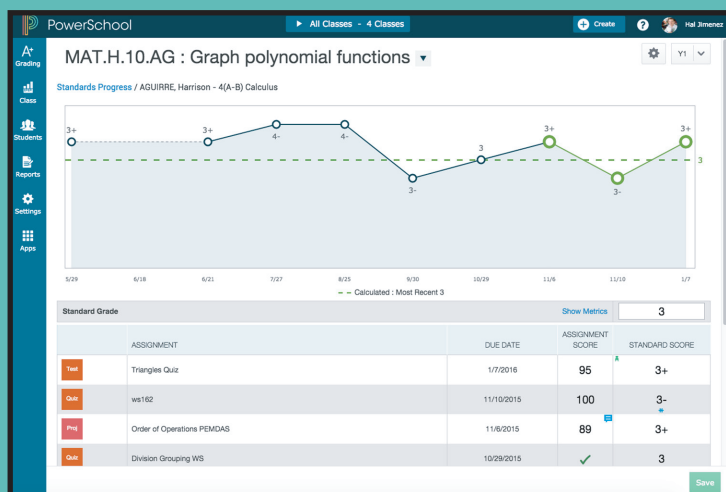
"PowerTeacher Pro raises the bar for both standards-based and traditional grading. It has a clean, thoughtful design that appropriately supports the use of evidence from both formative and summative assessment in ways that can be quickly mastered by not just a handful of enthusiastic individuals, but virtually all teachers within the school or district."

It is the new gold standard in standards-based grading."



PowerSchool
www.PowerSchool.com

877-873-1550



Introducing PowerTeacher Pro, the latest in innovative tools for the digital classroom, from PowerSchool, the leader in K-12 education technology solutions.

PowerTeacher Pro delivers robust functionality with an intuitive user interface and advanced features and flexibility to support both standards-based and traditional grading in one comprehensive solution.

With PowerTeacher Pro, empowering teachers and driving student growth is easier and more efficient than ever!

www.PowerSchool.com

877-873-1550

Accessible everywhere—from any computer or tablet

Access PowerTeacher Pro anywhere from any browser with an internet connection, so there's no need to spend extra time in the classroom. Its responsive design ensures that you will enjoy full functionality and a superior user experience from any computer or tablet, including Mac, Windows, iOS, Android, and Chromebooks. With its real-time interface, engagement on all devices is improved for teachers, students, and parents. And it's built on leading edge technology to be fast, responsive, and stable so your classroom management is as easy as ABC!

Built in collaboration with the teaching community for teachers

PowerTeacher Pro was developed based on top requests from the education community, to assure that your needs and expectations will be met: PowerTeacher Pro lets you:

- Save significant administrative teacher hours through district level configuration.
- Manage assignments and analyze performance across one, some, or all classes at a glance.
- Interface in real-time with parent and student portals, removing lag time for accessibility and repeated data entry.

Manage your classroom like a Pro!

Spend more time with your students, and less time searching for data. PowerTeacher Pro's user-friendly interface gives you the power to quickly find the data you want, and view it any way you choose:

- Stop fumbling for the data you need with assignments that are right at your fingertips, making scoring faster than ever.
- Access easy-to-use graphs and charts that give you an at-a-glance view for individual students as well as overall class progress.
- Reduce clicks required for entering individual and class scores via Quick Fill technology.

See it all on demand with a 360° view of student performance

PowerTeacher Pro gives you a comprehensive view of student performance, from assignments and comments, to standards, demographics, attendance, and quick lookup, showing students' scores, quickly and easily. You'll spend more time teaching, and less time tracking down information!

Extreme Flexibility in Class Analysis

PowerTeacher Pro is optimized for both standards-based and traditional grading, so you never have to struggle to align grading methods again. You can quickly view each student's trends graphically, over the term or most recent achievements, empowering you to drive student growth, and you can view progress across all classes - PowerTeacher Pro's visuals save time and effort in the analysis of each student's achievement.

Section VI: Pricing

Our cost summary and sample license agreement for our proposed solution is provided at the end of this section, following our pricing assumptions.

PowerSchool considers pricing information proprietary and confidential. PowerSchool considers that disclosure of this information to other vendors would put PowerSchool at a competitive disadvantage.

Pricing Assumptions

- The following offerings are included in our proposal:
 - PowerSchool Assessment
 - PowerSchool Analytics
 - PowerSchool Item Bank, 4-Core Content
 - KDS Inspect Item Bank
 - Basic training—Product Training Full Day (2 sessions)
- Pricing is provided based on a student population of 6,700 students and 15 school buildings.
- Ongoing annual costs are subject to an annual price increase of 3% in subsequent years within the contract term specified.
- Ongoing PowerSchool Subscription/Maintenance and Support Fees are invoiced at then current rates and enrollment per terms of the Licensed Product and Services Agreement, which may be subject to an annual increase after the first year for non-multi-year contracts and/or enrollment increases.
- The services pricing is based on the scoping and level of services as best understood by PowerSchool at the time of this response for standard implementation services. The pricing in the definitive agreement may be modified based on any scoping adjustments as agreed to by the parties during final negotiations. In addition, services hours are reviewed annually for appropriateness based on the client's requirements and desired initiatives.
- The estimates provided in this price proposal are based on the assumption that the District is purchasing standard implementation services. Often, clients request customization to standard services modules and/or the addition of complete custom services modules. (Standard implementation is defined as the services required to implement the software and to keep the software running in an up-to-date fashion.)
- This pricing does not include the hardware (laptops, desktops, mobile devices, scanners, etc.) required to utilize our software solutions.
- Unless specifically stated otherwise, PowerSchool assumes that our standard contract form is the basis for the final agreement.

Prepared By: Brian Rubin
Customer Name: Natchitoches Parish School District
Enrollment: 6,700
of Schools: 15.00
Contract Term: 36 Months
Start Date: 5/24/2016
End Date: 5/23/2019

Customer Contact: Julee Wright
Title: Director of Federal Programs
Address: PO Box 16
City: Natchitoches
State/Province: Louisiana
Zip Code: 71458-0016
Phone #: (318) 352-2358 x1177

Product Description	Quantity	Unit
---------------------	----------	------

License and Subscription Fees

PowerSchool LDS Data Analytics (2nd Module)	4,500.00	Students
PowerSchool Assessment	4,500.00	Students
KDS INSPECT ITEM BANK	4,500.00	Students
PSA Item Bank - 4 subjects	4,500.00	Students

License and Subscription Totals: **USD 51,975.00**

Training Services

Product Training Full Day (2 sessions)	1.00	Each
--	------	------

Training Services Total: **USD 1,500.00**

Quote Total

Total Discount:	USD 17,775.00
Year One Total:	USD 53,475.00

Annual Ongoing Fees

PowerSchool LDS Data Analytics (2nd Module)	4,500.00	Students
PowerSchool Assessment	4,500.00	Students
KDS INSPECT ITEM BANK	4,500.00	Students
PSA Item Bank - 4 subjects	4,500.00	Students

Annual Ongoing Fees Total: **USD 51,975.00**

Fees for subsequent years within the term bound by the Start Date and End Date detailed on this quote will be equal to the 'Annual Ongoing Fees' amount uplifted by 3% in each following year.

On-Going PowerSchool Subscription/Maintenance & Support Fees are invoiced at then current rates & enrollment per terms of the Licensed Product and Services Agreement, which may be subject to an annual increase after the first year for non-multi-year contracts and/or enrollment increases.

This proposal, including pricing, is valid for 60 days from the date of submission. Any applicable state sales tax has not been added to this quote. Subscription Start and Expiration Dates shall be as set forth above, which may be delayed based upon the date that PowerSchool receives your purchase order.

All invoices shall be paid within thirty (30) days of the date of invoice.

All purchase orders must contain the exact quote number stated within.



IMPORTANT: DO NOT ALLOW LICENSED PRODUCT (AS DEFINED BELOW) TO BE INSTALLED OR USED WITHOUT READING THE TERMS AND CONDITIONS OF THIS AGREEMENT. IF YOU ARE NOT WILLING TO ACCEPT THESE TERMS AND CONDITIONS, YOU MUST RETURN THE LICENSED PRODUCT TO POWERSCHOOL WITHIN TEN (10) DAYS OF RECEIPT. BY INSTALLING AND USING THE LICENSED PRODUCT AS PERMITTED BY THIS LICENSE OR ORDERING SERVICES (AS DEFINED BELOW), YOU ARE AGREEING TO BE BOUND BY THE TERMS OF THIS AGREEMENT.

LICENSED PRODUCT AND SERVICES AGREEMENT

Last updated as of April 6, 2016

1. **DEFINITIONS.** PowerSchool Group LLC., the licensor of Licensed Product pursuant to this Agreement, is referred to herein as “PowerSchool.” The school, school district or other entity licensing Licensed Product is referred to herein as “Licensee.” This Licensed Product and Services Agreement is referred to herein as the “Agreement.” In addition, the following definitions shall apply:

1.1 **Documentation** means all written user information, whether in electronic, printed or other format, delivered or made available to Licensee by PowerSchool with respect to Licensed Product, now or in the future, including instructions, manuals, training materials, and other publications that contain, describe, explain or otherwise relate to Licensed Product.

1.2 **Embedded Applications** means software developed by third parties that may be embedded in or bundled with the software developed by PowerSchool as part of Licensed Product.

1.3 **Hosting Services** means the hosting of the Licensee's license to the Licensed Product and Third Party Software by PowerSchool or its hosting providers from a server farm that is comprised of application, data and remote access servers used to store and run the Licensed Product and Third Party Software, including associated offline components.

1.4 **Licensed Product(s)** means all software (including Embedded Applications) and subsequent versions provided under Support Services and all related Documentation licensed to Licensee pursuant to this Agreement, now or in the future; provided, however, that Licensed Product shall not include any Third Party Software.

1.5 **Licensed Sites** means Licensee's schools, administrative offices, and other locations at which Licensee conducts its school administrative functions.

1.6 **Professional Services** means data conversion, implementation, site planning, configuration, integration and deployment of the Licensed Products or Hosting Services, application development, training, project management and other consulting services.

1.7 **Support Services** is defined in section 3.1. of the Support and Services Policies attached hereto.

1.8 **Services** means Support Services, Hosting Services and Professional Services collectively.

1.9 **State Reporting Code (or SRC)** means Licensed Product that may be available to Licensee to assist Licensee in meeting specific state reporting requirements and that is designated as State Reporting Code by PowerSchool.

1.10 **Third Party Software** means any software product designated as Third Party Software by PowerSchool, and any related documentation supplied to Licensee. Any product designated as Third Party Software is licensed by an entity other than PowerSchool, under different license terms than those set forth herein. Third Party Software is different from Embedded Applications in that PowerSchool licenses the Embedded Applications to Licensee as part of Licensed Product (but in some cases, such Embedded Applications may be subject to additional license terms as identified herein). PowerSchool is not the licensor of Third Party Software.

2. LICENSE GRANT

2.1 **Basic Terms.** Subject to the terms and conditions of this Agreement and the Privacy Policy located at <http://www.powerschool.com/customer-contract-privacy-policy>, PowerSchool grants to Licensee a restricted, personal, non-exclusive, non-transferable license to use the

Licensed Product specified in the PowerSchool's quotation or acceptance of License purchase order solely to support its school administrative functions, only at the Licensed Sites, not to exceed the maximum student enrollment as set forth in Section 1 of the Supplemental Terms and Conditions. Such license shall be perpetual, unless it is specified in PowerSchool's price quotation or proposal to Licensee that Licensee's license will be limited to a specified length of time, or unless this license is terminated under the provisions of this Agreement. In no event may Licensed Product be: (a) used other than at the Licensed Sites; (b) made available via a network or otherwise to any school, school district or third party other than the Licensed Sites; or (c) used to perform service bureau functions for third parties or to process or manage data for locations other than the Licensed Sites. Licensed Product will be provided by PowerSchool and may be used by Licensee in executable code form only; source code to Licensed Product will not be provided. Licensed Product shall only be used as expressly authorized by this Agreement.

2.2 **Copies.** Licensee shall not make copies of, otherwise reproduce, or allow any unauthorized and/or third-party access to any Licensed Product, except that: (a) Licensee may make copies of the software component of any Licensed Product, in executable code form, only for backup or archival purposes; and (b) Licensee may make unlimited printed copies for Licensee's internal use of any Documentation delivered by PowerSchool to Licensee. Licensee shall retain and include all of PowerSchool's or any third parties' copyright and other proprietary rights notices on all copies of Licensed Product. Licensee shall not otherwise reproduce Licensed Product.

2.3 **Supplemental Terms and Conditions.** The product-specific terms and conditions set forth in the Supplemental Terms and Conditions attached hereto are incorporated herein by reference. These additional terms and conditions are applicable to the extent that Licensee licenses any of the specific products or modules listed therein.

3. PROPRIETARY RIGHTS

3.1 **Restrictions on Use of the Licensed Product and Services.** Licensee shall use the Licensed Products and Services only for the internal business purposes of Licensee. Licensee shall not itself, or through any affiliate, employee, consultant, contractor, agent or other third party: (i) sell, resell, distribute, host, lease, rent, license or sublicense, in whole or in part, the Licensed Products or Services; (ii) decipher, decompile, disassemble, reverse assemble, modify, translate, reverse engineer or otherwise attempt to derive source code, algorithms, tags, specifications, architecture, structure or other elements of the Licensed Products or Services, in whole or in part, for competitive purposes or otherwise; (iii) write or develop any derivative works based upon the Licensed Product or Services; (iv) modify, adapt, translate or otherwise make any changes to the Licensed Products or Services or any part thereof; (v) use the Licensed Products or Services to provide processing services to third parties, or otherwise use the same on a 'service bureau' basis; (vi) disclose or publish, without PowerSchool prior written consent, performance or capacity statistics or the results of any benchmark test performed on the Licensed Products or Services; or (viii) otherwise use or copy the same except as expressly permitted herein. Licensee shall not transfer, assign, provide or otherwise make Licensed Products available to any other party without the prior written consent of PowerSchool. Any attempted sublicense, assignment or transfer of any rights, duties or obligations by Licensee in violation of this Agreement shall be void. Licensee shall hold PowerSchool harmless from claims for damages resulting from Licensee's misuse of the Licensed Products and

Services, including PowerSchool's intellectual property.

3.2 Intellectual Property Rights. Licensed Product is proprietary to PowerSchool and/or third parties and is protected by copyright, trade secret, and other intellectual property rights. The placement of a copyright notice on any portion of Licensed Product does not mean that such portion has been published and will not derogate any claim of trade secret protection for the same. Title to all complete or partial copies, and all applicable rights to copyrights, patents, trademarks and trade secrets in Licensed Product, are and shall remain the property of PowerSchool or their other owners, as applicable.

3.3 Confidentiality. Licensee agrees to keep Licensed Product confidential and to prevent unauthorized disclosure or use of Licensed Product in Licensee's possession. Licensee shall notify PowerSchool immediately in writing of any unauthorized use or distribution of Licensed Product of which Licensee becomes aware and shall take all steps necessary to ensure that such unauthorized use or distribution is terminated. For any Licensed Product for which PowerSchool makes available passwords or other user identification technology to access such Licensed Product, Licensee shall advise all users of such passwords or other user identifications that such passwords or user identifications must be maintained in confidence and not transmitted or shared.

4. SUPPORT AND OTHER SERVICES. Any Support and/or Professional Services and/or Hosting Services ordered from PowerSchool by Licensee in connection with the license of Licensed Product shall be provided by PowerSchool pursuant to PowerSchool's terms, conditions and policies applicable at the time of order to the particular Services purchased. PowerSchool's current terms, conditions and policies for delivery of Support and Services, which are subject to change from time to time, are attached hereto as the Support and Services Policies. Licensee's license of Licensed Product does not, by itself, entitle Licensee to any support, upgrades, patches, fixes or the like for Licensed Product; Licensee must maintain a current Support subscription and pay any applicable Support fees to be eligible for Support Services. Support Services must be purchased for all licenses in Licensee's possession. Support may not be purchased or renewed for a subset of such licenses only. Support Services may not be used as a substitute for Professional Services.

5. FEES AND TAXES. Licensee agrees to pay PowerSchool, in accordance with PowerSchool's invoice terms, the fees charged for the Licensed Products and related Services and/or other items ordered by Licensee, together with any other charges made in accordance with this Agreement, and all applicable sales, use or other taxes or duties, however designated, except for taxes based on PowerSchool's net income. Licensee agrees to also pay for PowerSchool's reasonable travel and lodging expenses for Services performed at Licensee's premises, at actual cost. If Licensee claims tax exempt status, Licensee agrees to provide evidence of such tax exemption upon PowerSchool's request. To the extent that such tax exemption cannot be properly claimed or does not extend to certain taxes or transactions, Licensee shall be responsible for any and all taxes and assessments that arise from this Agreement and related transactions (except for taxes based upon PowerSchool's net income). Licensee shall pay a monthly charge of 1.5% (18% annually) on all amounts not paid when due, or, if a lower maximum rate is established by law, then such lower maximum rate. All pricing set forth in any PowerSchool quotation or invoice is in United States dollars unless otherwise specified.

6. THIRD PARTY SOFTWARE LICENSE TERMS; EMBEDDED APPLICATIONS; OPEN SOURCE SOFTWARE. Any software designated by PowerSchool as Third Party Software is provided to Licensee pursuant to a separate license agreement between Licensee and the third party supplier, which will be provided to Licensee by the third party supplier. All support, warranties, and services related to Third Party Software are provided by the supplier of the Third Party Software under such third party's terms and conditions, and not by PowerSchool, unless otherwise specifically provided under this Agreement. Only Sections 5, 6, 9 and 12 of this Agreement apply to Third Party Software and any related support and services set forth in this Agreement. In addition, Licensed Product may contain Embedded Applications. If any additional license terms are identified in the Supplemental Terms and Conditions with respect to any Embedded Applications, Licensee shall

comply with such conditions with respect to such applications. Certain Embedded Applications may also be subject to "open source" licensing terms. In some cases, the open source licensing terms may conflict with portions of this Agreement, and to the extent of any such conflict, the open source licensing terms shall govern, but only as to the software components subject to those terms. Notwithstanding the foregoing, Licensee acknowledges that if any open source software component is licensed under terms that permit Licensee to modify such component, and if Licensee does so modify such component, then PowerSchool will not be responsible for any incompatibility with such modifications and the remainder of the Licensed Product.

7. COMPATIBLE PLATFORMS/HARDWARE. Licensee is responsible for obtaining and maintaining an appropriate operating environment with the necessary hardware, operating system software and other items required to use and access Licensed Product. PowerSchool will not be responsible for any incompatibility between Licensed Product and any versions of operating systems, hardware, browsers or other products not specifically approved by PowerSchool for Licensee's use with Licensed Product. PowerSchool will make written requirements available to Licensee at Licensee's request.

8. LIMITED MEDIA WARRANTY. PowerSchool warrants that the media on which Licensed Product is recorded shall be free from defects in materials and workmanship under normal use for a period of ninety (90) days from the date of purchase. Licensee's exclusive remedy under this Section shall be replacement of the defective media.

9. DISCLAIMER OF OTHER WARRANTIES. LICENSED PRODUCT AND SERVICES ARE PROVIDED "AS IS" AND WITHOUT WARRANTY OF ANY KIND (EXCEPT AS PROVIDED IN SECTION 8), AND POWERSCHOOL AND ITS LICENSORS EXPRESSLY DISCLAIM ALL OTHER WARRANTIES, EXPRESS OR IMPLIED, INCLUDING, BUT NOT LIMITED TO, ANY IMPLIED WARRANTIES OF MERCHANTABILITY, FITNESS FOR A PARTICULAR PURPOSE AND NON-INFRINGEMENT. POWERSCHOOL DOES NOT WARRANT THAT THE FUNCTIONALITY CONTAINED IN THE LICENSED PRODUCT WILL MEET LICENSEE'S REQUIREMENTS, OR THAT THE OPERATION OF THE LICENSED PRODUCT OR HOSTING SERVICES WILL BE UNINTERRUPTED OR ERROR-FREE, OR THAT DEFECTS IN THE LICENSED PRODUCT WILL BE CORRECTED. FURTHERMORE, POWERSCHOOL DOES NOT WARRANT OR MAKE ANY REPRESENTATIONS REGARDING THE USE OR THE RESULTS OF THE USE OF THE LICENSED PRODUCT OR SERVICES IN TERMS OF CORRECTNESS, ACCURACY, RELIABILITY, SECURITY OR OTHERWISE. LICENSEE AGREES THAT THE USE OF LICENSED PRODUCT AND SERVICES IS AT LICENSEE'S OWN RISK. NO ORAL OR WRITTEN INFORMATION OR ADVICE GIVEN BY POWERSCHOOL OR A POWERSCHOOL REPRESENTATIVE SHALL CREATE A WARRANTY OR IN ANY WAY INCREASE THE SCOPE OF ANY WARRANTY. SOME JURISDICTIONS MAY NOT ALLOW THE EXCLUSION OF CERTAIN IMPLIED WARRANTIES, SO THE ABOVE EXCLUSION MAY NOT FULLY APPLY TO LICENSEE.

10. STATE REPORTING CODE. Unless PowerSchool specifically offers SRC for Licensee's state, PowerSchool makes no representation that Licensed Product includes any SRC designed to meet the reporting requirements of Licensee's state. If PowerSchool does offer SRC for Licensee's state, Licensee acknowledges that the SRC is intended as a tool to assist Licensee in complying with state regulatory requirements; however, PowerSchool does not warrant that the SRC conforms to, or that use of the SRC will ensure Licensee's compliance with, all state regulatory requirements that may apply or that the SRC will be maintained to conform to such requirements now or in the future. It is Licensee's, and not PowerSchool's, responsibility to understand and comply with all such requirements.

11. TERMINATION

11.1 Termination for Breach. PowerSchool shall have the right to suspend performance under this Agreement in the event that Licensee is in breach of any of its obligations under this Agreement. In addition, either party shall have the right to terminate this Agreement in whole or in part upon thirty (30) days written notice to the other party, in the event the other party materially breaches this Agreement and fails to correct

such breach within such thirty (30) day period, provided that PowerSchool shall have the right to terminate this Agreement immediately upon written notice in the event that Licensee breaches any of its obligations under Section 3. Licensee further acknowledges that, as breach of the provisions of Section 3 could result in irreparable injury to PowerSchool, PowerSchool shall have the right to seek equitable relief against any actual or threatened breach thereof, without proving actual damages.

11.2 Effects of Termination. In the event of any termination of all or any portion of this Agreement, Licensee shall not be relieved of any obligation to pay any sums of money that have accrued prior to the date of termination. In addition, the provisions of Sections 3, 5, 6, 9, 11, 12 and 13 shall survive termination of this Agreement. Immediately upon any termination of a license for any Licensed Product under this Agreement, Licensee shall, at its own expense, either return to PowerSchool or destroy all copies of such Licensed Product and associated Third Party Software in its possession or control, and shall forward written certification to PowerSchool that all such copies of such Licensed Product and Third Party Software have either been destroyed or returned to PowerSchool.

11.3 Liquidated Damages. In the event that Licensee enters into a multi-year contract with PowerSchool and Licensee terminates the contract or any portion thereof, Licensee agrees to pay PowerSchool the remaining sum due to PowerSchool through the stated term of the contract as liquidated damages, as actual damages being impossible to calculate. Notwithstanding the foregoing, Licensee shall not be liable for said liquidated damages in the event that: (i) Licensee provides PowerSchool at least thirty (30) days' advance notice of termination prior to the effective date anniversary; and (ii) said termination is a result of the non-appropriation of funds for Licensee's contract. Licensee shall not utilize this clause as a right to terminate the contract for convenience. PowerSchool reserves the right to seek documentation evidencing the non-appropriation of funds.

12. LIMITATION OF LIABILITY. POWERSCHOOL SHALL NOT BE LIABLE TO LICENSEE FOR ANY SPECIAL, EXEMPLARY, INDIRECT, INCIDENTAL OR CONSEQUENTIAL DAMAGES; OR LOST PROFITS, LOST FUNDING, LOST SAVINGS, OR LOST OR DAMAGED DATA; OR FOR CLAIMS OF A THIRD PARTY; ARISING OUT OF THIS AGREEMENT, LICENSED PRODUCT, THIRD PARTY SOFTWARE, SUPPORT, SERVICES, OR OTHER ITEMS PROVIDED, OR THE USE OR INABILITY TO USE ANY OF THE FOREGOING, EVEN IF POWERSCHOOL HAS BEEN ADVISED OF THE POSSIBILITY OF SUCH DAMAGES OR THEY ARE FORESEEABLE. IN ANY EVENT, IN RESPECT OF ANY CLAIM, DEMAND OR ACTION ARISING OUT OF THIS AGREEMENT, LICENSEE SHALL BE LIMITED TO RECEIVING ACTUAL AND DIRECT DAMAGES IN A MAXIMUM AGGREGATE AMOUNT EQUAL TO THE CHARGES PAID BY LICENSEE TO POWERSCHOOL HEREUNDER FOR THE APPLICABLE LICENSED PRODUCT, ITEM OR SERVICE ON WHICH THE CLAIM IS BASED. IN ADDITION, IN NO EVENT WILL THE LIABILITY OF POWERSCHOOL RELATING TO SUPPORT SERVICES OR HOSTING SERVICES EXCEED THE TOTAL AMOUNT OF MONEY PAID BY LICENSEE TO POWERSCHOOL DURING THE IMMEDIATELY PRECEDING TWELVE (12) MONTH PERIOD WITH RESPECT TO THE PARTICULAR SUPPORT SERVICES OR HOSTING SERVICES ON WHICH THE CLAIM IS BASED.

13. GENERAL

13.1 Governing Law. THIS AGREEMENT SHALL BE GOVERNED BY THE LAWS OF THE STATE OF CALIFORNIA. The United Nations Convention on Contracts for the International Sale of Goods shall not apply to this Agreement. This Agreement shall not be subject to the Uniform Computer Information Transactions Act.

13.2 Compliance Verification. During the term of the Agreement and for a period of one year following its termination, PowerSchool shall have the right to verify Licensee's full compliance with the terms and requirements of the Agreement. Licensee shall (A) provide any assistance reasonably requested by PowerSchool or its designee in conducting any such audit, including installing and operating audit software, (B) make requested personnel, records, and information available to PowerSchool or its designee, and (C) in all cases, provide

such assistance, personnel, records, systems access and information in an expeditious manner to facilitate the timely completion of such compliance verification. If such verification process reveals any noncompliance, Licensee shall reimburse PowerSchool for the reasonable costs and expenses of such verification process incurred by PowerSchool (including but not limited to reasonable attorneys' fees), and Licensee shall promptly cure any such noncompliance; provided, however, that the obligations under this section do not constitute a waiver of PowerSchool's termination rights and do not affect PowerSchool's right to payment for Services and interest fees related to usage in excess of the quantities purchased.

13.3 General Provisions. Neither party shall be held liable to the other party for failure of performance where such failure is caused by supervening conditions beyond that party's control, including acts of God, civil disturbance, strikes or labor disputes. If any provision of this Agreement is invalid or unenforceable under any applicable statute or rule of law, this Agreement shall be enforced to the maximum extent possible to effectuate the original express intent of the parties. Licensee may bring no action arising out of this Agreement, regardless of form, more than one (1) year after the cause of action has arisen. In the case of notices to PowerSchool, such notices shall be sent to: PowerSchool Group LLC, Attn General Counsel, 150 Parkshore Drive, Folsom, CA 95630. In the case of notices to Licensee, such notices shall be sent to PowerSchool's address of record for Licensee. Either party may change its notice address by notifying the other in like manner. Licensee agrees that the terms of this Agreement, including all pricing for PowerSchool's products and services, shall be kept confidential and not disclosed to any third party without the prior written consent of PowerSchool.

13.4 Facilities. Licensee acknowledges that certain Services are intended to be performed by PowerSchool off-site (e.g., through remote communication capabilities). If any portion of the work will be performed on Licensee's premises, Licensee agrees to provide appropriate access to utilities, work space and other on-site accommodations reasonably necessary to enable PowerSchool to perform such work.

13.5 Confidentiality. PowerSchool agrees to use commercially reasonable efforts to maintain the confidentiality of Licensee confidential information that is disclosed to PowerSchool in connection with the performance of services, and to use such Licensee confidential information solely for purposes of performing services hereunder. PowerSchool shall require its employees, agents and subcontractors performing work hereunder to do likewise. For purposes of this Section, "Licensee confidential information" shall mean any student or personnel data belonging to Licensee, or any other Licensee information or data labeled or identified as confidential at the time of disclosure, provided, however, that this definition and the obligations of this Section shall not extend to any information that: (a) is or becomes publicly known through no fault or negligence of PowerSchool; (b) is or becomes lawfully available from a third party without restriction; (c) is independently developed by PowerSchool; or (d) is disclosed without restriction by Licensee to any third party at any time.

13.6 Limited License. Licensee grants to PowerSchool a non-exclusive, royalty free license, to use equipment, software, Licensee data or other material of Licensee solely for the purpose of performing its obligations under the Agreement. However, PowerSchool may use and distribute the Licensee data for any lawful purpose outside the scope of the Agreement, provided always that such Data must be aggregated and de-identified.

13.7 Export. Without in any way limiting the restrictions on transfer set forth elsewhere in this Agreement, Licensee specifically agrees that Licensee will not, directly or indirectly, export or transfer any export-controlled commodity, technical data or software: (a) in violation of any laws, regulations, rules or other limitations imposed by any government authority; or (b) to any country for which an export license or other governmental approval is required at the time of export, without first obtaining all necessary licenses or other approvals.

13.8 U.S. Government Restricted Rights. Licensed Product is a "commercial item" as that term is defined in 48 C.F.R. §2.101, consisting of "commercial computer software" and "commercial

computer software documentation" as such terms are defined in 48 C.F.R. §12.212 and 48 C.F.R. §227.7202, as applicable, and all as amended from time to time. Consistent with 48 C.F.R. §12.212, 48 C.F.R. §227.7202 and 48 C.F.R. §52.227-19, and other relevant sections of the Code of Federal Regulations, as applicable, and all as amended from time to time, all U.S. Government end users acquire Licensed Product only with those rights set forth herein.

13.9 Entire Agreement. This Agreement, inclusive of the Supplemental Terms and Conditions and the Support and Services Policies attached hereto, constitutes the complete and entire agreement between the parties with respect to its subject matter, and

supersedes all prior discussions, understandings, arrangements, proposals and negotiations with respect to same. The terms and conditions of this Agreement shall prevail notwithstanding any variance with the terms and conditions of any purchase order or other documentation submitted by Licensee with respect to Licensed Product or any related support or services, and PowerSchool hereby refuses any such different or additional provisions in purchase orders or other documents. By mutual agreement of the parties, this Agreement is effective upon receipt and supersedes all prior Agreements entered into by the parties, the parties' agents, and/or the parties' previous affiliates. This Agreement shall not be modified or amended without the written agreement of both parties.

SUPPLEMENTAL TERMS AND CONDITIONS

1. PRICING; ENROLLMENT INCREASES. License pricing for Licensed Product is based on student enrollment at the Licensed Sites. If an increase in student enrollment in excess of five percent (5%) occurs at the Licensed Sites, then Licensee shall pay additional license fees to PowerSchool in accordance with PowerSchool's invoice. Such additional license fees shall be computed by multiplying the then-current per student license fee for Licensed Product by Licensee's additional enrollment. Licensee's subsequent Support invoices will be based on the increased enrollment as well.

2. TERMS RELATING TO EMBEDDED APPLICATIONS

2.1 Oracle. The following terms are applicable to a certain Embedded Application known as Oracle Database Enterprise Edition (the "Oracle Software"):

(a) The Oracle Software may only be used in conjunction with the Licensed Product and solely for Licensee's internal business purposes.

(b) Oracle USA, Inc. ("Oracle") shall have no liability whatsoever to Licensee for any damages, whether direct, indirect, incidental, or consequential arising from Licensees' use of Licensed Product or the Oracle Software.

(c) Licensee is prohibited from publishing the results of any benchmark tests run on the Oracle Software.

(d) Licensee shall be prohibited from timesharing, rental, facility management, or service bureau use of the Oracle Software.

(e) Licensee's records may be audited, by PowerSchool or Oracle, during normal business hours to verify compliance with the terms of this Agreement.

(f) Oracle shall be a third party beneficiary of this Agreement.

(g) Oracle shall have no performance obligation or liability to Licensee in connection with this Agreement.

(h) Should the Oracle Software contain any source code provided by Oracle, such source code shall be governed by the terms of this Agreement.

2.2 GPL Software. Certain Embedded Applications included with the Licensed Product may be free software licensed under the terms of the GNU General Public License (GPL). Licensee may obtain a complete machine-readable copy of the source code for such free software under the terms of the GPL, without charge except for the cost of media, shipping, and handling, upon written request to PowerSchool. The GPL software is distributed in the hope that it will be useful, but WITHOUT ANY WARRANTY, including even the implied warranties of MERCHANTABILITY or FITNESS FOR A PARTICULAR PURPOSE. A complete copy of the GPL is included within the Licensed Product.

3. HARDWARE. If, in conjunction with Licensee's licensure of Licensed Product, Licensee is purchasing any hardware through PowerSchool, Licensee acknowledges that such hardware purchase is being facilitated by PowerSchool as an accommodation to Licensee only. The warranties on any hardware not manufactured by PowerSchool will be limited to those provided by the manufacturers of such hardware and/or the vendors through which such hardware is being supplied. PowerSchool will pass through any manufacturer's or other vendor's warranty to the extent permitted by the manufacturer or other vendor, as applicable. Licensee agrees to look solely to the applicable manufacturer or other vendor, and not to PowerSchool, to fulfill any such warranties and any maintenance, repair, support, or other service obligations related to such hardware. Unless otherwise specifically agreed to in writing by PowerSchool, PowerSchool does not provide support for any of the hardware or third party software being purchased by Licensee through PowerSchool. Any requests for such support should be directed to the applicable hardware or software manufacturer. Licensee further agrees that any claims related to any such hardware, whether for breach of warranty or otherwise, must be made directly against the applicable manufacturer or other vendor, and not against PowerSchool, and that PowerSchool shall have no liability whatsoever in connection with such claims.

SUPPORT AND SERVICES POLICIES

I. SUPPORT SERVICES

1. Definitions. Capitalized terms not defined herein shall have the meanings assigned to them in the applicable Licensed Product Agreement ("Agreement") between Licensee and PowerSchool to which these Support and Services Policies ("Policies") are attached. In addition, for purposes of these Policies, the following definitions shall apply:

Errors shall mean a reproducible failure of Licensed Product to operate in accordance with its standard Documentation, despite the proper installation and use of Licensed Product in a proper operating environment and on hardware and system software sufficient to meet PowerSchool's then-current minimum requirements, which are subject to change as New Versions are released. User mistakes are not Errors within the meaning of these Policies. Errors may be due to problems in Licensed Product, the Documentation, or both.

Fix shall mean a patch, service pack or corrective update of Licensed Product that PowerSchool may prepare in its discretion on an interim basis, prior to issuance of a New Version, to correct programming Errors that prevent or obstruct normal operation of Licensed Product in accordance with the applicable then-current Documentation.

New Products shall mean new products, programs or modules developed by PowerSchool that provide features, functions or applications not included in the Licensed Product originally licensed by Licensee and for which additional license fees apply as determined by PowerSchool. A New Product may be usable with or in addition to the Licensed Product originally licensed by Licensee. New Products will be licensed to Licensee under the terms of PowerSchool's then-current license agreement only after payment of applicable fees.

New Version shall mean an updated version of Licensed Product issued by PowerSchool, which may include Fixes, together with such other modifications, updates, enhancements and improvements to Licensed Product that PowerSchool may, in its discretion, develop and deem ready for distribution and that PowerSchool standardly provides to all customers with a current support subscription to such Licensed Product.

Support Services shall mean those support services described in Section 3.1 below that will be provided hereunder with respect to Licensed Product during Licensee's Support Term.

Support Term shall mean the length of time Support Services are to be provided hereunder and for which Licensee has paid any

applicable Support Services fees, including any initial Support Term and any renewal Support Terms.

Telephone and E-mail Support shall mean telephone and e-mail support services, available Monday through Friday, during PowerSchool's normal business hours, exclusive of PowerSchool's holidays, regarding Licensee's use of Licensed Product and any problems that Licensee experiences in using Licensed Product.

2. **Support Term; Fees.** Support Services for Licensed Product are available at an additional cost. For Support Services purchased concurrently with Licensee's license to Licensed Product, Licensee's initial Support Term will begin upon shipment of Licensed Product (or, in the case of Licensed Product made available for download electronically, upon PowerSchool's provision of the necessary licensing information to enable Licensee to download Licensed Product) and terminate one (1) year thereafter, unless a different Support Term is specified in PowerSchool's written acknowledgment of Licensee's order, or unless terminated earlier in accordance with the terms of these Policies or the Agreement. Either party may terminate the provision of Support Services as of the end of the then-current Support Term by providing written notice to the other party prior to the end of the then-current Support Term that such party does not wish to renew the Support Term. If no notice of non-renewal is given by either party, the Support Term will automatically renew for the applicable renewal term stated on PowerSchool's renewal invoice at the then current Support fees; otherwise, Licensee's Support Term will terminate at the end of Licensee's current paid-up Support Term. If Licensee's Support Term is so terminated due to non-payment, and then PowerSchool subsequently reinstates Licensee's access to support, such reinstated access shall remain subject to the terms of these Policies and payment of applicable reinstatement fees. For the initial Support Term, Licensee shall pay the charges specified in PowerSchool's initial invoice. For renewal Support Terms, Licensee shall pay PowerSchool's then-current annual Support Services fees. PowerSchool may supply new or modified Support and Services Policies or other terms and conditions to Licensee related to the provision of Support Services in a renewal term, in which event such new or modified Support and Services Policies or other terms and conditions will govern PowerSchool's provision of Support Services in such renewal term.

3. **Support Services Scope.** PowerSchool, or an entity under contract with and authorized by PowerSchool to provide Support Services, will provide Support Services for Licensed Product during the Support Term. The scope of Support Services shall be as follows:

3.1 **Support.** Support Services shall include: (a) Telephone and E-mail Support; (b) access to an online support website, as maintained by PowerSchool for customers maintaining a current support subscription; (c) Fixes, as developed and made generally available by PowerSchool in its discretion to address Errors that Licensee is experiencing in using Licensed Product; and (d) New Versions, as developed and made generally available by PowerSchool. Support Services do not include New Products. PowerSchool determines, in its sole discretion, what constitutes a New Product (for which additional license fees apply), and what improvements and enhancements to existing Licensed Product functionality are to be included in a New Version (and are therefore provided at no charge to customers with a current support subscription).

3.2 **Custom Programs.** For any custom programs developed for Licensee by PowerSchool, Support Services are available only on a time and materials basis at PowerSchool's current rates and charges for these services; support for custom programs is not included in Support Services. In addition, to the extent that Licensed Product includes any functionality that allows Licensee to customize screens or reports, PowerSchool will support the application infrastructure utilized to create such customizations but will not be responsible for supporting any such customizations.

3.3 **Requisite Training.** In order to receive Support Services described herein, Licensee must purchase appropriate training

regarding the use and operation of Licensed Product. Telephone and E-mail Support may be limited to a specified number of authorized representatives of Licensee who have been appropriately trained.

3.4 **Enhancements to SRC.** PowerSchool may provide certain enhancements to SRC to customers that are current in their payment of annual Support fees for the SRC to PowerSchool. However, PowerSchool reserves the right, in its discretion: (a) to require that additional fees be paid by customers desiring that SRC be updated in connection with new reporting requirements in their state, in the event that such state's education department or equivalent entity makes changes to the state's reporting requirements that were not anticipated at the time PowerSchool determined its applicable Support fees for the SRC in that state; or (b) not to make further changes or enhancements to SRC in a given state based on lack of market demand, the nature and scope of the changes required, or other factors.

4. **Authorized Representatives.** If Licensee has purchased Support Services for the Licensed Product from PowerSchool, then in order to receive such Support Services, Licensee shall identify to PowerSchool up to two (2) people who will contact PowerSchool with any technical and product questions ("Authorized Representatives"). If it is desired that additional Authorized Representatives be permitted to contact PowerSchool for Support, Licensee must pay additional Support fees for such additional Authorized Representatives. All such Authorized Representatives shall complete, at a minimum, PowerSchool's Initial Product Training for the Licensed Product. Licensee shall provide PowerSchool with a written list of its Authorized Representatives as part of the implementation process for the Licensed Product, and shall keep PowerSchool informed of replacements for Authorized Representatives as soon as possible after the replacements occur.

5. **Licensee Other Responsibilities.** To receive Support Services, Licensee shall: (a) report Errors or suspected Errors for which Support Services are needed, and supply PowerSchool with sufficient information and data to reproduce the Error; (b) procure, install, operate and maintain hardware, operating systems and other software that are compatible with the most current supported version of Licensed Product; (c) establish adequate operational back-up provisions in the event of malfunctions or Errors; (d) maintain an operating environment free of any modifications or other programming that might interfere with the functioning of Licensed Product; (e) maintain hardware and system software consistent with PowerSchool's minimum requirements; and (f) timely install all Fixes and New Versions supplied by PowerSchool in the proper sequence, and have the most current version of Licensed Product installed. Licensee acknowledges that Fixes and New Versions may be made available electronically, and that, in some cases, PowerSchool may maintain e-mail distribution lists that are used to notify customers of the availability of Fixes and New Versions and to provide other information to customers that are maintaining a current support subscription. Licensee shall be responsible for including the appropriate Licensee personnel on any such e-mail distribution lists of PowerSchool so that Licensee receives such notifications and other information.

6. **Support For Prior Versions.** Licensee must timely install all Fixes and New Versions to receive Support Services. In some cases, it may not be practical for certain customers to install a New Version immediately upon release. Therefore, PowerSchool may, in its discretion, continue to provide Telephone and E-mail Support for the prior version of Licensed Product for a period of time after release of a New Version. Licensee acknowledges that Fixes and other code maintenance will not be available for prior versions of Licensed Product (including SRC) after the release of a New Version.

II. PROFESSIONAL SERVICES

1. **Fees and Expenses.** In addition to providing Support Services during the Support Term, PowerSchool will perform such other Professional Services (training, installation, consulting, project management, etc.) as may be specified in PowerSchool's written

acknowledgment of Licensee's order, or as may be subsequently agreed upon by the parties; provided that PowerSchool may, at its option, arrange for any such services to be performed by another entity on behalf of PowerSchool. Licensee agrees to pay for such services at the rates and charges specified in PowerSchool's written acknowledgment of Licensee's order, or, for work subsequently requested, at the rates agreed upon by Licensee and PowerSchool for such subsequent work. PowerSchool reserves the right to require a purchase order or equivalent documentation from Licensee prior to performing any such Services, or to require prepayment of certain Services. Unless otherwise specified, all rates quoted are for services to be performed during PowerSchool's normal business hours; additional charges may apply for evenings, weekends or holidays. Licensee shall also pay PowerSchool for travel expenses (lodging, meals, transportation and other related expenses) incurred in the performance of services. All such additional charges will be due and payable concurrently with payment for services. PowerSchool reserves the right to impose a minimum labor charge for each on-site visit. The rates and charges specified in PowerSchool's acknowledgment of Licensee's order shall apply to those services originally ordered; however, PowerSchool reserves the right to change service rates or other terms as a condition of entering into any subsequent service engagement. In the event that Licensee pays in advance for any services, all services must be scheduled and delivered within twelve (12) months of such payment, unless otherwise agreed in writing by PowerSchool; any portion of any prepaid services amount that has not been used by Licensee toward services actually rendered within such twelve (12) month period shall be forfeited.

2. **Training.** PowerSchool reserves the right to limit the number of persons permitted to attend any training class in accordance with PowerSchool's training standards.

3. **Services Cancellation.** Licensee shall pay a cancellation charge equal to fifty percent (50%) of the services fee and any non-refundable expenses incurred by PowerSchool if Licensee cancels any scheduled professional services less than fourteen (14) days before the occurrence of any service dates that PowerSchool has scheduled at Licensee's request.

4. **Ownership Of Materials.** PowerSchool shall be the owner of all copyrights, patent rights and other intellectual property rights in any software code, documentation, reports or other deliverables (collectively, "Deliverables") created for or provided to Licensee pursuant to Professional Services. Provided that Licensee pays PowerSchool all fees and expenses associated with the development and provision of such Deliverables, Licensee shall have a paid-up, royalty-free license to use such Deliverables for Licensee's internal use only, solely for the purpose for which such Deliverables were provided. Nothing in this Agreement shall prevent PowerSchool from providing any Deliverables to PowerSchool's other customers or third parties. Notwithstanding the foregoing, PowerSchool acknowledges and agrees that any Licensee confidential information (as defined in Section IV of these Policies) that is incorporated into any Deliverable remains subject to the provisions of such Section.

III. HOSTING SERVICES

1. **Term; Fees.** Hosting Services are available at an additional cost. For Hosting Services purchased concurrently with Licensee's license to Licensed Product, Licensee's initial Hosting Term will begin upon PowerSchool's written acknowledgment of Licensee's order and terminate one (1) year thereafter, ("Hosting Term") unless a different Hosting Term is specified in PowerSchool's written acknowledgment of Licensee's order, or unless terminated earlier in accordance with the terms of these Policies or the Agreement. Either party may terminate the provision of Hosting Services with effect as of the end of the then-current Hosting Term by providing written notice to the other party prior to the end of the then-current Term that such party does not wish to renew the Hosting Term. PowerSchool will provide Licensee with at least sixty (60) days' notice if PowerSchool determines that it will no longer offer Hosting Services to Licensee (but in any event will continue providing Hosting Services for the balance of the current term for which Licensee has prepaid for such

Services). If no notice of non-renewal is given by either party, then PowerSchool will invoice Licensee for the applicable renewal fees for a subsequent Hosting Term. If Licensee's Hosting Term is so terminated due to non-payment, and then PowerSchool subsequently reinstates Licensee's access to Hosting Services, such reinstated access shall remain subject to the terms of these Policies and payment of applicable reinstatement fees. For the initial Hosting Term, Licensee shall pay the charges specified in PowerSchool's initial invoice. For renewal Terms, Licensee shall pay PowerSchool's then-current annual Hosting Services fees. PowerSchool may supply new or modified Support and Services Policies or other terms and conditions to Licensee related to the provision of Hosting Services in a renewal term, in which event such new or modified Support and Services Policies or other terms and conditions will govern PowerSchool's provision of Hosting Services in such renewal term. Should Licensee decide to terminate hosting services, Licensee will retain its license to Licensed Product, subject to the terms of this Agreement.

2. **Availability.** Licensee acknowledges and agrees that the Licensed Product may be inaccessible or inoperable from time to time due to planned maintenance or to causes that are beyond the control of PowerSchool or are not reasonably foreseeable by PowerSchool, including, but not limited to: the interruption or failure of telecommunication or digital transmission links; hostile network attacks; network congestion; or other failures (collectively "Downtime"). PowerSchool shall use commercially reasonable efforts to minimize any disruption, inaccessibility and/or inoperability of the Licensed Product caused by Downtime, whether scheduled or not.

3. **Acceptable Use Policy.** Licensee acknowledges and agrees that PowerSchool does not monitor or police the content of communications or data of Licensee or its users transmitted through the Services, and that PowerSchool shall not be responsible for the content of any such communications or transmissions. Licensee shall use the Services exclusively for authorized and legal purposes, consistent with all applicable laws and regulations and PowerSchool's policies. Licensee agrees not to post or upload any content or data which (a) is libelous, defamatory, obscene, pornographic, abusive, harassing or threatening; (b) violates the rights of others, such as data which infringes on any intellectual property rights or violates any right of privacy or publicity; or (c) otherwise violates any applicable law. PowerSchool may remove any violating content posted or transmitted through the Hosting Services, without notice to Licensee. PowerSchool may suspend or terminate any user's access to the Hosting Services upon notice in the event that PowerSchool reasonably determines that such user has violated the terms and conditions of this Agreement.

4. **Security.** Licensee will not: (a) breach or attempt to breach the security of the Hosting Services or any network, servers, data, computers or other hardware relating to or used in connection with the Hosting Services, or any third party that is hosting or interfacing with any part of the Hosting Services; or (b) use or distribute through the Hosting Services any software, files or other tools or devices designed to interfere with or compromise the privacy, security or use of the Hosting Services or the operations or assets of any other customer of PowerSchool or any third party. Licensee will comply with the user authentication requirements for use of the Hosting Services. Licensee is solely responsible for monitoring its authorized users' access to and use of the Hosting Services. PowerSchool has no obligation to verify the identity of any person who gains access to the Hosting Services by means of an access ID. Any failure by any authorized user to comply with the Agreement shall be deemed to be a material breach by Licensee, and PowerSchool shall not be liable for any damages incurred by Licensee or any third party resulting from such breach. Licensee must immediately take all necessary steps, including providing notice to PowerSchool, to effect the termination of an access ID for any authorized user if there is any compromise in the security of that access ID or if unauthorized use is suspected or has occurred.

5. **Data.** Licensee has sole responsibility for the legality, reliability, integrity, accuracy and quality of the data it processes through and submit to the Hosting Services.