

DATE: 5/10/2017  
BID NO.: 50-00119704

INVITATION TO BID  
THIS IS NOT AN ORDER

Page: 1

## JEFFERSON PARISH

PURCHASING DEPARTMENT  
P.O. BOX 9  
GRETNA, LA. 70054-0009  
504-364-2678

BUYER: DNELSON@jeffparish.net

BIDS WILL BE RECEIVED IN THE WEST BANK PURCHASING DEPT, SUITE 4400, JEFFERSON PARISH GENERAL GOVERNMENT BUILDING, 200 DERBIGNY STREET, GRETNA, LA 70053 UNTIL 2:00 PM, 5/25/2017 AND PUBLICLY OPENED THEREAFTER. For convenience, bidders may also submit bids in the East Bank Purchasing Department, Suite 404, Jefferson Parish Joseph S. Yenni Building, 1221 Elmwood Park Blvd., Jefferson LA 70123. However, if submitting bids on the day of bid opening, bidders must submit at the West Bank location only. All bids will be publicly opened at the West Bank location.

At no charge, bidders may also submit via Jefferson Parish's electronic procurement page by visiting [www.jeffparishbids.net](http://www.jeffparishbids.net) to register for this free site. Additional instructions are included in the text box highlighting electronic procurement.

### LATE BIDS WILL NOT BE ACCEPTED

Unless submitting via online (see Page 3), each bid must be submitted in a sealed envelope bearing on the outside; the name of the Bidder, his address, and the name of the project for which the bid is submitted and the bid number.

**NOTE: ONLY BIDS WRITTEN IN INK OR TYPEWRITTEN, AND PROPERLY SIGNED BY A MEMBER OF THE FIRM OR AUTHORIZED REPRESENTATIVE, WILL BE ACCEPTED. PENCIL AND/OR PHOTOSTATIC FIGURES OR SIGNATURES SHALL RESULT IN BID REJECTION.**

### INSTRUCTIONS FOR BIDDERS AND GENERAL CONDITIONS

#### THE FOLLOWING INSTRUCTIONS APPLY TO ALL BIDS

All bids submitted are subject to these instructions and general conditions and any special conditions and specifications contained herein, all of which are made part of this bid proposal reference. By submitting a bid, vendor agrees to comply with all provisions of Louisiana Law as well be in compliance with the Jefferson Parish Code of Ordinances, Louisiana Code of Ethics, applicable Jefferson Parish ethical standards and Jefferson Parish Resolution No. 113646 and/or Resolution No. 113647.

All vendors submitting bids should register as a Jefferson Parish vendor if not already yet registered. Registration forms may be downloaded from <http://purchasing.jeffparish.net> and by clicking on Vendor Information. Current W-9 forms with respective Tax Identification numbers and vendor applications may be submitted at any time; however, if your company is not registered and/or a current W-9 form is not on file, vendor registration is mandatory. Further, a current W-9 form and respective Tax Identification number must be supplied upon contract execution, should you be awarded a contract and/or issued purchase order. Failure to do so may result in delay of payment.

All quotations shall be based on F.O.B. Agency warehouse or job site, anywhere within the Parish as designated by the Purchasing Department. This provision does not apply to public works projects

JEFFERSON PARISH requires all products to be new (current) and all work must be performed according to standard practices for the project. Unless otherwise specified, no aftermarket parts will be accepted. Unless otherwise specified, all workmanship and materials must have at least one (1) year guaranty, in writing, from the date of delivery and/or acceptance of the project. Any deviations or alterations from the specifications must be indicated and/or supporting documentation supplied with bid submission.

Bidders should submit all questions in writing and fax them to the Purchasing Department at (504) 364-2693 no later than FIVE (5) working days prior to bid opening. Bid numbers should be mentioned in all requests. Questions may also be emailed to the buyer for this bid at the email address listed above. If submitting online, vendors may send questions via the E-Procurement site no later than Five (5) working days prior to the bid opening.

If this bid requires a pre-bid conference (see Additional Requirements section), bidders are advised that such conference will be held to allow bidders the opportunity to identify any discrepancies in the bid specifications and seek further clarification regarding instructions. The Purchasing Department will issue a written response to bidders' questions in the form of an Addendum. Please note that all official communication will be expressed in the form of an addendum.

All formal Addenda require written acknowledgement on the bid form by the bidder. Failure to acknowledge an Addendum on the bid form shall cause the bid to be rejected. JEFFERSON PARISH reserves the right to award bid to next lowest responsive and responsible bidder in this event.

The purpose and intention of this invitation to bid is to afford all suppliers an equal opportunity to bid on all construction, maintenance, repair, operating supplies and/or equipment listed in this bid proposal. JEFFERSON PARISH WILL ACCEPT ONE BID ONLY FROM EACH VENDOR. Items bid must meet specifications.

**Visit our website at [HTTP://PURCHASING.JEFFPARISH.NET](http://PURCHASING.JEFFPARISH.NET)**



JEFFERSON PARISH will accept one price for each item unless otherwise indicated. Two or more prices for one item will result in bid rejection. Bidders are required to complete, sign and return the bid form and/or complete and return the associated line item pricing forms as indicated. Vendors must not alter the bid forms. Doing so will cause the bid to be rejected.

A corporate resolution or written evidence of the individual signing the bid having such authority must be submitted with the bid. Failure to comply will cause bid to be rejected. For corporate entities, such written evidence may be a printout of the Louisiana Secretary of State's website listing the signatory as an officer. Such printout shall be included with the bid submission. Bids submitted by Owners or Sole Proprietorships must include certification that he or she owns the entity for which the bid is signed. This documentation must be submitted with the bid. Failure to do so will result in bid rejection.

NOTE: A sample corporate resolution can be downloaded from our website <http://purchasing.jeffparish.net> or you may provide your own document. A sample certification of sole proprietorship can also be downloaded from our website <http://purchasing.jeffparish.net> or you may provide your own document.

### INSTRUCTIONS FOR BIDDERS AND GENERAL CONDITIONS

A. AWARD OF CONTRACT: JEFFERSON PARISH reserves the right to award contracts or place orders on a lump sum or individual item basis, or such combination, as shall in its judgment be in the best interest of JEFFERSON PARISH. Every contract or order shall be awarded to the LOWEST RESPONSIVE and RESPONSIBLE BIDDER, taking into consideration the CONFORMITY WITH THE SPECIFICATIONS and the DELIVERY AND/OR COMPLETION DATE. SPLIT AWARDS MADE TO SEVERAL VENDORS WILL ONLY BE GRANTED TO THOSE DEEMED RESPONSIVE AND RESPONSIBLE.

All bid prices shall remain valid for 45 days. Jefferson Parish and the lowest responsive and responsible bidder(s) by mutual written consent may mutually agree to extend the deadline for award by one (1) or more extensions of thirty (30) calendar days.

PROTESTS: Only those vendors that submitted a bid in response to this solicitation may submit a protest in writing to the Director of the Purchasing within 48 hours of bid opening. The Purchasing Director will review it in connection with the Parish Attorney's Office which will then respond in writing as soon as possible.

PREFERENCE: Unless federal funding is directly spent by Jefferson Parish for this purchase, preference is hereby given to materials, supplies, and provisions produced, manufactured or grown in Louisiana, quality being equal to articles offered by competitors outside the state. "LSA - R.S. 38:2251-2261"

B. USE OF BRAND NAMES AND STOCK NUMBERS: Where brand names and stock numbers are specified, it is for the purpose of establishing certain minimum standards of quality. Bids may be submitted for products of equal quality, provided brand names and stock numbers are specified. Complete product data may be required prior to award.

C. CANCELLATION OF CONTRACT: JEFFERSON PARISH reserves the right to cancel all or any part if not shipped promptly. No charges will be allowed for parking or cartage unless specified in quotation. The order must not be filled at a higher price than quoted. JEFFERSON PARISH reserves the right to cancel any contract at anytime and for any reason by issuing a THIRTY (30) day written notice to the contractor.

For good cause and as consideration for executing a contract with Jefferson Parish, vendor conveys, sells, assigns and transfers to Jefferson Parish or its assigns all rights, title and interest in and to all causes of action it may now or hereafter acquire under the antitrust laws of the United States and the State of Louisiana, relating to the particular good or services purchased or acquired by Jefferson Parish.

D. PRICES: Jefferson Parish is exempt from paying sales tax under LSA-R.S. 47:301 (8)(c). All prices for purchases by Jefferson Parish of supplies and materials shall be quoted in the unit of measure specified and unless otherwise specified, shall be exclusive of state and Parish taxes. The price quoted for work shall be stated in figures. In the event there is a difference in unit prices and totals, the unit price shall prevail.

Quantities listed are for bidding purposes only. Actual requirements may be more or less than quantities listed.

Bidders are not to exclude from participation in, deny the benefits of, or subject to discrimination under any program or activity, any person in the United States on the grounds of race, color, national origin, or sex; nor discriminate on the basis of age under the Age Discrimination Act of 1975, or with respect to an otherwise qualified handicapped individual as provided in Section 504 of the Rehabilitation Act of 1973, or on the basis of religion, except that any exemption from such prohibition against discrimination on the basis of religion as provided in the Civil Rights Act of 1964, or Title VI and VII of the Act of April 11, 1968, shall also apply. This assurance includes compliance with the administrative requirements of the Revenue Sharing final handicapped discrimination provisions contained in Section 51.55 (c), (d), (e), and (k)(5) of the Regulations. New construction or renovation projects must comply with Section 504 of the 1973 Rehabilitation Act, as amended, in accordance with the American National Standard Institute's specifications (ANSI A17.1-1961).

Jefferson Parish and its partners as the recipients of federal funds are fully committed to awarding a contract(s) to firm(s) that will provide high quality services and that are dedicated to diversity and to containing costs. Thus, Jefferson Parish strongly encourages the involvement of minority and/or woman-owned business enterprises (DBE's, including MBE's, WBE's and SBE's) to stimulate participation in procurement and assistance programs.



Advertised bids will be tabulated and a copy of the tabulation will be forwarded to each responding bidder.

**IN ACCORDANCE WITH STATE REGULATIONS JEFFERSON PARISH OFFERS ELECTRONIC PROCUREMENT TO ALL VENDORS**

This electronic procurement system allows vendors the convenience of reviewing and submitting bids online. This is a secure site and authorized personnel have limited read access only. Bidders are encouraged to submit electronically using this free service; while the website accepts various file types, one single PDF file containing all appropriate and required bid documents is preferred. Bidders submitting uploaded images of bid responses are solely responsible for clarity. If uploaded images/documents are not legible, then bidder's submission will be rejected. Please note all requirements contained in this bid package for electronic bid submission.

Please visit our E-Procurement Page at [www.jeffparishbids.net](http://www.jeffparishbids.net) to register and view Jefferson Parish solicitations. For more information, please visit the Purchasing Department page at <http://purchasing.jeffparish.net>.

The general specifications for construction projects and the purchase of materials, services and/or supplies are those adopted by the JEFFERSON PARISH Council by Resolution No. 113646 or 113647 dated 12/09/09. The general conditions adopted by this resolution shall be considered as much a part of this document as if they were written wholly herein. A copy may be obtained from the Office of the Parish Clerk, Suite 6700, Jefferson Parish General Government Building, 200 Derbigny Street, Gretna, LA 70053. You may also obtain a copy by visiting the Purchasing Department webpage at <http://purchasing.jeffparish.net> and clicking on Online Forms.

**ADDITIONAL REQUIREMENTS FOR THIS BID**

PLEASE MATCH THE NUMBERS PRINTED IN THIS BOX WITH THE  
CORRESPONDING INSTRUCTIONS BELOW.

**10,12,13,15**

1. All bidders must attend the MANDATORY pre-bid conference and will be required to sign in and out as evidence of attendance. In accordance with LSA R.S. 38:2212(I), all prospective bidders shall be present at the beginning of the MANDATORY pre-bid conference and shall remain in attendance for the duration of the conference. Any prospective bidder who fails to attend the conference or remain for the duration shall be prohibited from submitting a bid for the project.
2. Attendance to this pre-bid conference is optional. However, failure to attend the pre-bid conference shall not relieve the bidder of responsibility for information discussed at the conference. Furthermore, failure to attend the pre-bid conference and inspection does not relieve the successful bidder from the necessity of furnishing materials or performing any work that may be required to complete the work in accordance with the specification with no additional cost to the owner.
3. Contractor must hold current applicable JEFFERSON PARISH licenses with the Department of Inspection and Code Enforcement. Contractor shall obtain any and all permits required by the JEFFERSON PARISH Department of Inspection and Code Enforcement. The contractor shall be responsible for the payment of these permits. All permits must be obtained prior to the start of the project. Contractor must also hold any and all applicable Federal and State licenses. Contractor shall be responsible for the payment of these permits and shall obtain them prior to the start of the project.
4. A LA State Contractor's License will be required in accordance with LSA R.S. 37-2150 et. seq. and such license number will be shown on the outside of the bid envelope. Failure to comply will cause the bid to be rejected. Additionally if submitting the bid electronically, then the license number must be entered in the appropriate field in the Electronic Procurement system. Failure to comply will cause the bid to be rejected.
5. It is the bidder's responsibility to visit the job site and evaluate the job before submitting a bid.
6. Job site must be clean and free of all litter and debris daily and upon completion of the contract. Passageways must be kept clean and free of material, equipment, and debris at all times. Flammable material must be removed from the job site daily because storage will not be permitted on the premises. Precautions must be exercised at all times to safeguard the welfare of JEFFERSON PARISH and the general public.



**INSTRUCTIONS FOR BIDDERS AND GENERAL CONDITIONS**

7. **PUBLIC WORKS BIDS:** All awards for public works in excess of \$5,000.00 will be reduced to a formal contract which shall be recorded at the contractor's expense with the Clerk of Court and Ex-Officio Recorder of Mortgages for the Parish of Jefferson. A price list of recordation costs may be obtained from the Clerk of Court and Ex-Officio Recorder of Mortgages for the Parish of Jefferson. All awards in excess of \$25,000.00 will require both a performance and a payment bond. Unless otherwise stated in the bid specifications, the performance bond requirements shall be 100% of the contract price. Unless otherwise state in the bid specifications, the payment bond requirements shall be 100% of the contract price. Both bonds shall be supplied at the signing of the contract.
8. **NON-PUBLIC WORKS BIDS:** A performance bond will be required for this bid. The amount of the bond will be 100% of the contract price unless otherwise indicated in the specifications. The performance bond shall be supplied at the signing of the contract.
9. **NON-PUBLIC WORKS BIDS:** A payment bond will be required for this bid. The amount of the bond will be 100% of the contract price unless otherwise indicated in the specifications. The payment bond shall be supplied at the signing of the contract.
10. Unless otherwise stated in the bid specifications, the successful bidder will be required to procure standard insurance policies evidencing Parish-mandated insurance requirements as indicated on the attached "insurance requirements" sheet. All bidders must comply with the instructions in this sheet. Failure to comply will cause bid to be rejected.
11. A bid bond will be required with bid submission in the amount of 5% of the total bid, unless otherwise stated in the bid specifications. Acceptable forms shall be limited to cashier's check, certified check, or surety bid bond. All sureties must be in original format (no copies). If submitting a bid online, vendors must submit an electronic bid bond through the respective online clearinghouse bond management system(s) as indicated in the electronic bid solicitation on Central Auction House. No scanned paper copies of any bid bond will be accepted as part of the electronic bid submission.
12. This is a requirements contract to be provided on an as needed basis. JEFFERSON PARISH makes no representations on warranties with regard to minimum guaranteed quantities unless otherwise stated in the bid specifications.
13. Freight charges should be included in total cost when quoting. If not quoted FOB DELIVERED, freight must be quoted as a separate item. Bid may be rejected if not quoted FOB DELIVERED or if freight charges are not indicated on bid form.
14. **PUBLIC WORKS BIDS - Completed, Signed and Properly Notarized Affidavits Required;** This applies to all solicitations for construction, alteration or demolition of public buildings or projects, in conformity with the provisions contained in LSA-RS 38:2212.9, LSA-RS 38:2212.10, LSA-RS 38:2224, and Sec 2-923.1 of the Jefferson Parish Code of Ordinances. For bidding purposes, all bidders must submit with bid submission COMPLETED, SIGNED and PROPERLY NOTARIZED Affidavits, including: Non-Conviction Affidavit, Non-Collusion Affidavit, Campaign Contribution Affidavit, Debt Disclosures Affidavit and E-Verify Affidavit. For the convenience of vendors, all affidavits have been combined into one form entitled PUBLIC WORKS BID AFFIDAVIT. This affidavit must be submitted in its original format, and without material alteration, in order to be compliant and for the bid to be considered responsive. A scanned copy of the completed, signed and properly notarized affidavit may be submitted with the bid, however, the successful bidder must submit the original affidavit in its original format and without material alteration upon contract execution. Failure to comply will result in the bid submission being rejected as non-responsive. The Parish reserves the right to award bid to the next lowest responsive and responsible bidder in this event.
15. **NON PUBLIC WORK BIDS - Completed, Signed and Properly Notarized Affidavits Required** in conformity with the provisions contained in LSA - RS 38:2224 and Sec 2-923.1 of the Jefferson Parish Code of Ordinances. For bidding purposes, all bidders must submit with bid submission COMPLETED, SIGNED and PROPERLY NOTARIZED Affidavits, including: Non-Collusion Affidavit, Debt Disclosures Affidavit and Campaign Contribution Affidavit. For the convenience of vendors, all affidavits have been combined into one form entitled NON PUBLIC WORKS BID AFFIDAVIT. This affidavit must be submitted in its original format, and without material alteration, in order to be compliant and for the bid to be considered responsive. A scanned copy of the completed, signed and properly notarized affidavit may be submitted with the bid, however, the successful bidder must submit the original affidavit in its original format and without material alteration upon contract execution. Failure to comply will result in the bid submission being rejected as non-responsive. The Parish reserves the right to award bid to the next lowest responsive and responsible bidder in this event.
16. The ensuing contract for this bid solicitation may be eligible for FEMA reimbursement and/or Federal funding/reimbursement. As such, the referenced appendix will be applicable accordingly and shall be considered a part of the bid documents. All applicable certifications must be duly completed, signed and submitted with bid submission. Failure to submit applicable certifications with bid submission will result in bid rejection.
17. For this project, the Contractor shall not pay any state or local sales or use taxes on materials and equipment which are affixed and made part of the immovable property of the project or which permanently incorporated in the project (hereinafter referred to as "applicable materials and equipment"). All purchases of applicable materials or equipment shall be made by the contractor on behalf of and as the agent of Jefferson Parish (Owner), a political subdivision of the State of Louisiana. No state and local sales and use taxes are owned on applicable materials and equipment under the provisions of Act 1029 of the 1991 Regular Session - Louisiana Revised Statute 47:301(8)(c). Owner will furnish contractor a certificate form which certifies that Owner is not required to pay such state or local sales and use taxes, and contractor shall furnish a copy of such certificate to all vendors or suppliers of the applicable materials and equipment.

It shall be the duty of every parish officer, employee, department, agency, special district, board, and commission: and the duty of every contractor, subcontractor, and licensee of the parish, and the duty of every applicant for certification of eligibility for a parish contract or program, to cooperate with the Inspector General in any investigation, audit, inspection, performance review, or hearing pursuant to Jefferson Parish Code of Ordinances Section 2-155.10(19). By submitting a bid, vendor acknowledges this and will abide by all provisions of the referenced Jefferson Parish Code of Ordinances.



DATE: 5/10/2017

Page: 5

BID NO.: 50-00119704

**BID FORM**  
Non Public Works

All Public Work Projects are required to use the Louisiana Uniform Public Work Bid Form

All prices must be held firm unless an escalation provision is requested in this bid. Jefferson Parish will allow one escalation during the term of the contract, which may not exceed the U.S. Bureau of Labor Statistics National Index for all Urban Consumers, unadjusted 12 month figure. The most recently published figure issued at the time an adjustment is requested will be used. A request must be made in writing by the vendor, and the escalation will only be applied to purchases made after the request is made.

Are you requesting an escalation provision?

YES \_\_\_\_\_ NO X

MAXIMUM ESCALATION PERCENTAGE REQUESTED \_\_\_\_\_ %

INITIAL BID PRICES WILL REMAIN FIRM THROUGH THE DATE OF \_\_\_\_\_

For the purposes of comparison of bids when an escalation provision is requested, Jefferson Parish will apply the maximum escalation percentage quoted by the bidder to the period to which it is applied in the bid. The initial price and the escalation will be used to calculate the total bid price. It will be assumed, for comparison of prices only, that an equal amount of material or labor is purchased each month throughout the entire contract.

**DELIVERY: FOB JEFFERSON PARISH**

INDICATE DELIVERY DATE ON EQUIPMENT AND SUPPLIES

7-15 DAYS

LOUISIANA CONTRACTOR'S LICENSE NO.: (if applicable) \_\_\_\_\_

**THIS SECTION MUST BE COMPLETED BY BIDDER:**

FIRM NAME: Cmsco

ADDRESS: 1840 LA Aves

CITY, STATE: Metairie, LA ZIP: 70001

TELEPHONE: (504) 835-7379 FAX: (504) 832-0820

EMAIL ADDRESS: Jeff@Cmscinc.com

In the event that addenda are issued with this bid, bidders MUST acknowledge all addenda on the bid form. Bidder must acknowledge receipt of an addendum on the bid form as indicated. Failure to acknowledge any addendum on the bid form will result in bid rejection.

Acknowledge Receipt of Addenda: NUMBER: #1 5/24

NUMBER: #2 5/25

NUMBER: \_\_\_\_\_

NUMBER: \_\_\_\_\_

TOTAL PRICE OF ALL BID ITEMS: \$ 272,636.96

AUTHORIZED SIGNATURE: [Signature]

TITLE: SALES

Jeff DeVilwan

Printed Name

SIGNING INDICATES YOU HAVE READ AND COMPLY WITH THE INSTRUCTIONS AND CONDITIONS.

NOTE: All bids should be returned with the BID NUMBER and BID OPENING DATE indicated on the outside of the envelope submitted to the Purchasing Department.



DATE: 5/10/2017

## INVITATION TO BID FROM JEFFERSON PARISH - continued

Page 6

BID NO.: 50-00119704

SEALED BID

ITEM NUMBER	QUANTITY	U/M	DESCRIPTION OF ARTICLES	UNIT PRICE QUOTED	TOTALS
			ONE (1) YEAR CONTRACT FOR A SUPPLY OF COUPLINGS, RESTRAINING DEVICES, AND THE RELATED GASKETS FOR THE JEFFERSON PARISH DEPARTMENT OF PUBLIC WORKS WATER & SEWER & ALL J.P. AGENCIES AND MUNICIPALITIES		
1	2.00	EA	0010 3 INCH FLANGE RESTRAINER PART #1003 (38418)	18.25	36.50
2	2.00	EA	0020 4 INCH FLANGE RESTRAINER PART #1004 (38417)	36.94	73.88
3	2.00	EA	0030 6 INCH FLANGE RESTRAINER PART #1006 (38415)	37-	74-
4	2.00	EA	0040 8 INCH FLANGE RESTRAINER PART #1008 (38416)	37-	74-
5	2.00	EA	0050 10 INCH FLANGE RESTRAINER PART #1010 (38419)	54-	108-
6	2.00	EA	0060 12 INCH FLANGE RESTRAINER PART #1012 (38411)	59-	118-
7	2.00	EA	0070 14 INCH FLANGE RESTRAINER PART #1014 (38412)	131.31	262.62
8	2.00	EA	0080 16 INCH FLANGE RESTRAINER PART #1016 (38413)	174-	348-
9	2.00	EA	0090 18 INCH FLANGE RESTRAINER PART #1018 (38424)	202-	404-
10	2.00	EA	0100 20 INCH FLANGE RESTRAINER PART #1020 (38420)	243-	486-
11	2.00	EA	0110 24 INCH FLANGE RESTRAINER PART #1024 (38414)	294.86	589.72
12	2.00	EA	0120 4 INCH BELL RESTRAINT HARNESS C900 SPLIT SERRATED RING	34-	68-



DATE: 5/10/2017

## INVITATION TO BID FROM JEFFERSON PARISH - continued

Page 7

BID NO.: 50-00119704

SEALED BID

ITEM NUMBER	QUANTITY	U/M	DESCRIPTION OF ARTICLES	UNIT PRICE QUOTED	TOTALS
13	16.00	EA	PART #1504 (51240) 0130 6 INCH BELL RESTRAINT HARNESS C900 SPLIT SERRATED RING	48 <sup>-</sup>	768 <sup>-</sup>
14	2.00	EA	PART #1506 (51241) 0140 8 INCH BELL RESTRAINT HARNESS C900 SPLIT SERRATED RING	75 <sup>-</sup>	150 <sup>-</sup>
15	2.00	EA	PART #1508 (51242) 0150 4 INCH BELL RESTRAINT HARNESS C900 SERRATED & NON-SERRATED RING	37 <sup>-</sup>	74 <sup>-</sup>
16	2.00	EA	PART #1604 0160 6 INCH BELL RESTRAINT HARNESS C900 SERRATED & NON-SERRATED RING	48 <sup>-</sup>	96 <sup>-</sup>
17	2.00	EA	PART #1606 (51241A) 0170 8 INCH BELL RESTRAINT HARNESS C900 SERRATED & NON-SERRATED RING	68 <sup>-</sup>	136 <sup>-</sup>
18	2.00	EA	PART #1608 (51242A) 0180 10 INCH BELL RESTRAINT HARNESS C900 SERRATED & NON-SERRATED RING	87 <sup>-</sup>	174 <sup>-</sup>
19	2.00	EA	PART #1610 (51243) 0190 4 INCH BELL RESTRAINT HARNESS D.I. PART #1704	24.50	49 <sup>-</sup>
20	2.00	EA	0200 6 INCH BELL RESTRAINT HARNESS D.I. PART #1706	39.63	79.26
21	1.00	EA	0210 8 INCH BELL RESTRAINT HARNESS D.I. PART #1708	44.96	44.96
22	2.00	EA	0220 10 INCH BELL RESTRAINT HARNESS D.I. PART #1710 (51254)	78.14	156.28
23	2.00	EA	0230 12 INCH BELL RESTRAINT HARNESS D.I. PART #1712	98 <sup>-</sup>	196 <sup>-</sup>



DATE: 5/10/2017

## INVITATION TO BID FROM JEFFERSON PARISH - continued

Page 8

BID NO.: 50-00119704

SEALED BID

ITEM NUMBER	QUANTITY	U/M	DESCRIPTION OF ARTICLES	UNIT PRICE QUOTED	TOTALS
24	2.00	EA	0240 14 INCH BELL RESTRAINT HARNESS D.I. PART #1714	100.40	200.80
25	2.00	EA	0250 16 INCH BELL RESTRAINT HARNESS D.I. PART #1716 (51253)	204.65	409.30
26	2.00	EA	0260 18 INCH BELL RESTRAINT HARNESS D.I. PART #1718	215.97	431.94
27	2.00	EA	0270 20 INCH BELL RESTRAINT HARNESS D.I. PART #1720	303.82	607.64
28	2.00	EA	0280 24 INCH BELL RESTRAINT HARNESS D.I. PART #1724	404 <sup>-</sup>	808 <sup>-</sup>
29	2.00	EA	0290 30 INCH BELL RESTRAINT HARNESS D.I. PART #1730	714 <sup>-</sup>	1428 <sup>-</sup>
30	2.00	EA	0300 36 INCH BELL RESTRAINT HARNESS D.I. PART #1736	1076 <sup>-</sup>	2152 <sup>-</sup>
31	2.00	EA	0310 1.5 INCH FLANGE COUPLING ADAPTER EPOXY COATED; PART #2100-0213-260 (17980)	89 <sup>-</sup>	178 <sup>-</sup>
32	2.00	EA	0320 2 INCH FLANGE COUPLING ADAPTER EPOXY COATED; PART #2100-0303-260 (17981)	95.25	190.50
33	2.00	EA	0330 3 INCH FLANGE COUPLING ADAPTER EPOXY COATED; PART #2100-0433-260 (17982)	135.26	270.52
34	24.00	EA	0340 4 INCH FLANGE COUPLING ADAPTER EPOXY COATED; PART #2100-0563-260 (17984)	178 <sup>-</sup>	4272 <sup>-</sup>
35	12.00	EA	0350 6 INCH FLANGE COUPLING ADAPTER EPOXY COATED; PART #2100-0768-260	234 <sup>-</sup>	2808 <sup>-</sup>



DATE: 5/10/2017

## INVITATION TO BID FROM JEFFERSON PARISH - continued

Page 9

BID NO.: 50-00119704

SEALED BID

ITEM NUMBER	QUANTITY	U/M	DESCRIPTION OF ARTICLES	UNIT PRICE QUOTED	TOTALS
36	16.00	EA	(17985) 0360 8 INCH FLANGE COUPLING ADAPTER EPOXY COATED; PART #2100-0984-260	310 <sup>-</sup>	4960 <sup>-</sup>
37	2.00	EA	(17986) 0370 10 INCH FLANGE COUPLING ADAPTER EPOXY COATED; PART #2100-1226-260	508 <sup>-</sup>	1016 <sup>-</sup>
38	2.00	EA	(17988) 0380 12 INCH FLANGE COUPLING ADAPTER EPOXY COATED; PART #2100-1366-260	421.43	842.86
39	2.00	EA	(17989) 0390 12 INCH FLANGE COUPLING ADAPTER EPOXY COATED; PART #2100-1441-260	421.43	842.86
40	2.00	EA	(17990) 0400 3 INCH FLANGE COUPLING ADAPTER TEFLON COATED; PART #2103 (17999A)	44.41	88.82
41	2.00	EA	0410 4 INCH FLANGE COUPLING ADAPTER TEFLON COATED; PART #2104 (18000A)	82.89	165.78
42	2.00	EA	0420 6 INCH FLANGE COUPLING ADAPTER TEFLON COATED; PART #2106 (18001A)	122.40	244.80
43	2.00	EA	0430 8 INCH FLANGE COUPLING ADAPTER TEFLON COATED; PART #2108 (18002A)	158.41	316.82
44	2.00	EA	0440 10 INCH FLANGE COUPLING ADAPTER TEFLON COATED; PART #2110 (18003A)	274.64	549.28
45	2.00	EA	0450 12 INCH FLANGE COUPLING ADAPTER TEFLON COATED; PART #2112 (18004A)	309.81	619.62
46	2.00	EA	0460 14 INCH FLANGE COUPLING ADAPTER TEFLON COATED; PART #2114 (18005A)	478 <sup>-</sup>	956 <sup>-</sup>
47	2.00	EA	0470 16 INCH FLANGE COUPLING ADAPTER TEFLON COATED; PART #2116 (18006A)	823 <sup>-</sup>	1646 <sup>-</sup>



DATE: 5/10/2017

## INVITATION TO BID FROM JEFFERSON PARISH - continued

Page 10

BID NO.: 50-00119704

SEALED BID

ITEM NUMBER	QUANTITY	U/M	DESCRIPTION OF ARTICLES	UNIT PRICE QUOTED	TOTALS
48	2.00	EA	0480 18 INCH FLANGE COUPLING ADAPTER TEFLON COATED; PART #2118 (18015A)	975 <sup>-</sup>	1950 <sup>-</sup>
49	2.00	EA	0490 20 INCH FLANGE COUPLING ADAPTER TEFLON COATED; PART #2120 (18016A)	1217 <sup>-</sup>	2434 <sup>-</sup>
50	2.00	EA	0500 24 INCH FLANGE COUPLING ADAPTER TEFLON COATED; PART #2124 (18017A)	1454 <sup>-</sup>	2908 <sup>-</sup>
51	2.00	EA	0510 30 INCH FLANGE COUPLING ADAPTER TEFLON COATED; PART #2130 (18018A)	1714 <sup>-</sup>	3428 <sup>-</sup>
52	2.00	EA	0520 36 INCH FLANGE COUPLING ADAPTER TEFLON COATED; PART #2136 (18019A)	2700 <sup>-</sup>	5400 <sup>-</sup>
53	2.00	EA	0530 42 INCH FLANGE COUPLING ADAPTER TEFLON COATED; PART #2142 (18014A)	6900 <sup>-</sup>	13800 <sup>-</sup>
54	2.00	EA	0540 48 INCH FLANGE COUPLING ADAPTER TEFLON COATED; PART #2148 (18013A)	7800 <sup>-</sup>	15600 <sup>-</sup>
55	36.00	EA	0550 1.5 INCH TRANSITION COUPLING PART #2000-0213-260 (18019)	74 <sup>-</sup>	2664 <sup>-</sup>
56	60.00	EA	0560 2 INCH TRANSITION COUPLING PART #2000-0303-260 (18020)	69 <sup>-</sup>	4140 <sup>-</sup>
57	48.00	EA	0570 4 INCH TRANSITION COUPLING PART #2000-0563-260 (18031)	131.69	6321.12
58	250.00	EA	0580 6 INCH TRANSITION COUPLING PART #2000-0768-260 (18041)	184.12	46030 <sup>-</sup>
59	150.00	EA	0590 8 INCH TRANSITION COUPLING PART #2000-0984-260 (18151)	198 <sup>-</sup>	29700 <sup>-</sup>
60	30.00	EA	0600 10 INCH TRANSITION COUPLING PART #2000-1226-260 (18079)	271 <sup>-</sup>	8130 <sup>-</sup>



DATE: 5/10/2017

## INVITATION TO BID FROM JEFFERSON PARISH - continued

Page 11

BID NO.: 50-00119704

SEALED BID

ITEM NUMBER	QUANTITY	U/M	DESCRIPTION OF ARTICLES	UNIT PRICE QUOTED	TOTALS
61	24.00	EA	0610 12 INCH TRANSITION COUPLING PART #2000-1441-260 (18155)	390.24	9365.76
62	2.00	EA	0620 14 INCH TRANSITION COUPLING PART #2000-1710-260 (18297A)	661 <sup>-</sup>	1322 <sup>-</sup>
63	2.00	EA	0630 16 INCH TRANSITION COUPLING PART #2000-1920-260 (18299)	803 <sup>-</sup>	1606 <sup>-</sup>
64	2.00	EA	0640 18 INCH TRANSITION COUPLING PART #2000-2160-260 (18300)	822.90	1645.80
65	2.00	EA	0650 20 INCH TRANSITION COUPLING PART #2000-2360-260 (18308)	946.72	1893.44
66	2.00	EA	0660 3 INCH JOINT RESTRAINER (D.I.) PART # 1103 DEC (51799)	19 <sup>-</sup>	38 <sup>-</sup>
67	2.00	EA	0670 4 INCH JOINT RESTRAINER (D.I.) PART # 1104 DEC (51800)	26 <sup>-</sup>	52 <sup>-</sup>
68	24.00	EA	0680 6 INCH JOINT RESTRAINER (D.I.) PART # 1106 DEC (51801)	36.25	870 <sup>-</sup>
69	1.00	EA	0690 8 INCH JOINT RESTRAINER (D.I.) PART # 1108 DEC (51802)	44.55	44.55
70	2.00	EA	0700 10 INCH JOINT RESTRAINER (D.I.) PART # 1110 DEC (51803)	49 <sup>-</sup>	98 <sup>-</sup>
71	1.00	EA	0710 12 INCH JOINT RESTRAINER (D.I.) PART # 1112 DEC (51804)	79 <sup>-</sup>	79 <sup>-</sup>
72	2.00	EA	0720 14 INCH JOINT RESTRAINER (D.I.) PART # 1114 DEC (51805)	79.90	159 <sup>-</sup>
73	2.00	EA	0730 16 INCH JOINT RESTRAINER (D.I.) PART # 1116 DEC (51806)	136 <sup>-</sup>	272 <sup>-</sup>



DATE: 5/10/2017

## INVITATION TO BID FROM JEFFERSON PARISH - continued

Page 12

BID NO.: 50-00119704

SEALED BID

ITEM NUMBER	QUANTITY	U/M	DESCRIPTION OF ARTICLES	UNIT PRICE QUOTED	TOTALS
74	2.00	EA	0740 18 INCH JOINT RESTRAINER (D.I.) PART # 1118 DEC (51807)	132 <sup>-</sup>	264 <sup>-</sup>
75	6.00	EA	0750 20 INCH JOINT RESTRAINER (D.I.) PART # 1120 DEC (51808)	168 <sup>-</sup>	1008 <sup>-</sup>
76	2.00	EA	0760 24 INCH JOINT RESTRAINER (D.I.) PART # 1124 DEC (51809)	254 <sup>-</sup>	508 <sup>-</sup>
77	1.00	EA	0770 30 INCH JOINT RESTRAINER (D.I.) PART # 1130 DEC (51810)	575 <sup>-</sup>	575 <sup>-</sup>
78	1.00	EA	0780 36 INCH JOINT RESTRAINER (D.I.) PART # 1136 DEC (51811)	736 <sup>-</sup>	736 <sup>-</sup>
79	2.00	EA	0790 42 INCH JOINT RESTRAINER (D.I.) PART # 1142 DEC (51812)	1100 <sup>-</sup>	2200 <sup>-</sup>
80	2.00	EA	0800 48 INCH JOINT RESTRAINER (D.I.) PART # 1148 DEC (51813)	1574.59	3149.18
81	2.00	EA	0810 3 INCH JOINT RESTRAINER (C900) PART # 2003PEC (51819)	21 <sup>-</sup>	42 <sup>-</sup>
82	120.00	EA	0820 4 INCH JOINT RESTRAINER (C900) PART # 2004PEC (51820)	33 <sup>-</sup>	3960 <sup>-</sup>
83	300.00	EA	0830 6 INCH JOINT RESTRAINER (C900) PART # 2006PEC (51821)	43 <sup>-</sup>	12900 <sup>-</sup>
84	200.00	EA	0840 8 INCH JOINT RESTRAINER (C900) PART # 2008PEC (51822)	54 <sup>-</sup>	10800 <sup>-</sup>
85	2.00	EA	0850 10 INCH JOINT RESTRAINER (C900) PART # 2010PEC (51823)	59 <sup>-</sup>	118 <sup>-</sup>
86	2.00	EA	0860 12 INCH JOINT RESTRAINER (C900) PART # 2012PEC (51824)	82 <sup>-</sup>	164 <sup>-</sup>

DATE: 5/10/2017

## INVITATION TO BID FROM JEFFERSON PARISH - continued

Page 13

BID NO.: 50-00119704

SEALED BID

ITEM NUMBER	QUANTITY	U/M	DESCRIPTION OF ARTICLES	UNIT PRICE QUOTED	TOTALS
87	2.00	EA	0870 14 INCH JOINT RESTRAINER (C900) PART # 2014PEC (51825)	99 <sup>-</sup>	198 <sup>-</sup>
88	2.00	EA	0880 16 INCH JOINT RESTRAINER (C900) PART # 2016PEC (51826)	136 <sup>-</sup>	272 <sup>-</sup>
89	2.00	EA	0890 18 INCH JOINT RESTRAINER (C900) PART # 2018PEC (51827)	141 <sup>-</sup>	282 <sup>-</sup>
90	2.00	EA	0900 20 INCH JOINT RESTRAINER (C900) PART # 2020PEC (51828)	178 <sup>-</sup>	356 <sup>-</sup>
91	4.00	EA	0910 24 INCH JOINT RESTRAINER (C900) PART # 2024PEC (51829)	265 <sup>-</sup>	1060 <sup>-</sup>
92	1.00	EA	0920 30 INCH JOINT RESTRAINER (C900) PART # 2030PEC (51830)	681.31	681.31
93	1.00	EA	0930 36 INCH JOINT RESTRAINER (C900) PART # 2036PEC (51831)	810 <sup>-</sup>	810 <sup>-</sup>
94	8.00	EA	0940 PIPE SIZE 6 INCH TRANSITION GASKET NOM (51132)	3 <sup>-</sup>	24 <sup>-</sup>
95	2.00	EA	0950 PIPE SIZE 8 INCH TRANSITION GASKET NOM (51133)	4 <sup>-</sup>	8 <sup>-</sup>
96	2.00	EA	0960 PIPE SIZE 10 INCH TRANSITION GASKET NOM (51134)	4 <sup>-</sup>	8 <sup>-</sup>
97	2.00	EA	0970 PIPE SIZE 12 INCH TRANSITION GASKET NOM (51135)	5 <sup>-</sup>	10 <sup>-</sup>
98	2.00	EA	0980 PIPE SIZE 3 INCH MECHANICAL JOINT GASKET; NOM: O.D. 4.875 INCH (51220)	3 <sup>-</sup>	6 <sup>-</sup>
99	2.00	EA	0990 PIPE SIZE 4 INCH MECHANICAL JOINT GASKET; NOM: O.D. 4.80 INCH (51221)	3 <sup>-</sup>	6 <sup>-</sup>



DATE: 5/10/2017

## INVITATION TO BID FROM JEFFERSON PARISH - continued

Page 14

BID NO.: 50-00119704

SEALED BID

ITEM NUMBER	QUANTITY	U/M	DESCRIPTION OF ARTICLES	UNIT PRICE QUOTED	TOTALS
100	60.00	EA	1000 PIPE SIZE 6 INCH MECHANICAL JOINT GASKET; NOM: O.D. 6.90 INCH (51222)	3 <sup>-</sup>	180 <sup>-</sup>
101	2.00	EA	1010 PIPE SIZE 8 INCH MECHANICAL JOINT GASKET; NOM: O.D. 9.05 INCH (51223)	3 <sup>-</sup>	6 <sup>-</sup>
102	2.00	EA	1020 PIPE SIZE 10 INCH MECHANICAL JOINT GASKET; NOM: O.D. 11.10 INCH (51224)	3 <sup>-</sup>	6 <sup>-</sup>
103	2.00	EA	1030 PIPE SIZE 12 INCH MECHANICAL JOINT GASKET; NOM: O.D. 13.20 INCH (51225)	5 <sup>-</sup>	10 <sup>-</sup>
104	2.00	EA	1040 PIPE SIZE 14 INCH MECHANICAL JOINT GASKET; NOM: O.D. 15.30 INCH (51226)	5 <sup>-</sup>	10 <sup>-</sup>
105	2.00	EA	1050 PIPE SIZE 16 INCH MECHANICAL JOINT GASKET; NOM: O.D. 17.40 INCH (51227)	6 <sup>-</sup>	12 <sup>-</sup>
106	2.00	EA	1060 PIPE SIZE 18 INCH MECHANICAL JOINT GASKET; NOM: O.D. 19.50 INCH (51228)	7 <sup>-</sup>	14 <sup>-</sup>
107	2.00	EA	1070 PIPE SIZE 20 INCH MECHANICAL JOINT GASKET; NOM: O.D. 21.60 INCH (51229)	7 <sup>-</sup>	14 <sup>-</sup>
108	2.00	EA	1080 PIPE SIZE 24 INCH MECHANICAL JOINT GASKET; NOM: O.D. 25.80 INCH (51230)	9 <sup>-</sup>	18 <sup>-</sup>
109	2.00	EA	1090 PIPE SIZE 30 INCH MECHANICAL JOINT GASKET; NOM: O.D. 32.00 INCH (51231)	21 <sup>-</sup>	42 <sup>-</sup>
110	2.00	EA	1100 PIPE SIZE 36 INCH MECHANICAL JOINT GASKET; NOM: O.D. 38.30 INCH (51232)	24 <sup>-</sup>	48 <sup>-</sup>
111	2.00	EA	1110 PIPE SIZE 42 INCH MECHANICAL JOINT GASKET; NOM: O.D. 44.50 INCH (51233)	49 <sup>-</sup>	98 <sup>-</sup>
112	2.00	EA	1120 PIPE SIZE 48 INCH MECHANICAL JOINT GASKET; NOM: O.D. 50.80 INCH (51234)	54 <sup>-</sup>	108 <sup>-</sup>

DATE: 5/10/2017

## INVITATION TO BID FROM JEFFERSON PARISH - continued

Page 15

BID NO.: 50-00119704

SEALED BID

ITEM NUMBER	QUANTITY	U/M	DESCRIPTION OF ARTICLES	UNIT PRICE QUOTED	TOTALS
113	<del>24</del> 288.00	<del>EA</del> CS	1130 PIPE LUBRICANT (50180)	108 <sup>-</sup>	2592 <sup>-</sup>
114	2.00	EA	1140 4 INCH DUCTILE IRON BODY TRANSITIONAL COUPLINGS 4 - 12 INCHES (NON-RESTRAINED)	167 <sup>-</sup>	334 <sup>-</sup>
115	2.00	EA	1150 6 INCH DUCTILE IRON BODY TRANSITIONAL COUPLINGS 4 - 12 INCHES (BIB-RESTRAINED)	215 <sup>-</sup>	430 <sup>-</sup>
116	2.00	EA	1160 8 INCH DUCTILE IRON BODY TRANSITIONAL COUPLINGS 4 - 12 INCHES (NON-RESTRAINED)	241 <sup>-</sup>	482 <sup>-</sup>
117	2.00	EA	1170 10 INCH DUCTILE IRON BODY TRANSITIONAL COUPLINGS 4 - 12 INCHES (NON-RESTRAINED)	296 <sup>-</sup>	592 <sup>-</sup>
118	2.00	EA	1180 12 INCH DUCTILE IRON BODY TRANSITIONAL COUPLINGS 4 - 12 INCHES (NON-RESTRAINED)	370 <sup>-</sup>	740 <sup>-</sup>
119	24.00	EA	1190 14 INCH X 12 INCH REDUCING COUPLING HYMAX #861560315035316 (18156)	1509.71	36233.04





# CERTIFICATE OF LIABILITY INSURANCE

DATE (MM/DD/YYYY)

8/19/2016

THIS CERTIFICATE IS ISSUED AS A MATTER OF INFORMATION ONLY AND CONFERS NO RIGHTS UPON THE CERTIFICATE HOLDER. THIS CERTIFICATE DOES NOT AFFIRMATIVELY OR NEGATIVELY AMEND, EXTEND OR ALTER THE COVERAGE AFFORDED BY THE POLICIES BELOW. THIS CERTIFICATE OF INSURANCE DOES NOT CONSTITUTE A CONTRACT BETWEEN THE ISSUING INSURER(S), AUTHORIZED REPRESENTATIVE OR PRODUCER, AND THE CERTIFICATE HOLDER.

IMPORTANT: If the certificate holder is an ADDITIONAL INSURED, the policy(ies) must be endorsed. If SUBROGATION IS WAIVED, subject to the terms and conditions of the policy, certain policies may require an endorsement. A statement on this certificate does not confer rights to the certificate holder in lieu of such endorsement(s).

## PRODUCER

E B Ducasse Insurance Agency, Inc  
3200 Ridgeland Dr, Suite 401

Metairie LA 70002

## INSURED

CIMSCO INC  
1840 L AND A ROAD

METAIRIE LA 70001-6237

CONTACT NAME: Darly Oser

PHONE (A/C, No, Ext): (504) 840-9883

FAX (A/C, No): (504) 840-9889

E-MAIL: doser@ebducasse.com

ADDRESS: ebducasse.com

## INSURER(S) AFFORDING COVERAGE

NAIC #

INSURER A: United Fire and Indemnity Co 19496

INSURER B: Progressive Paloverde Insuran 44695

INSURER C: Retailers Casualty Ins. Co

INSURER D:

INSURER E:

INSURER F:

## COVERAGES

CERTIFICATE NUMBER: CL1681900937

REVISION NUMBER:

THIS IS TO CERTIFY THAT THE POLICIES OF INSURANCE LISTED BELOW HAVE BEEN ISSUED TO THE INSURED NAMED ABOVE FOR THE POLICY PERIOD INDICATED. NOTWITHSTANDING ANY REQUIREMENT, TERM OR CONDITION OF ANY CONTRACT OR OTHER DOCUMENT WITH RESPECT TO WHICH THIS CERTIFICATE MAY BE ISSUED OR MAY PERTAIN, THE INSURANCE AFFORDED BY THE POLICIES DESCRIBED HEREIN IS SUBJECT TO ALL THE TERMS, EXCLUSIONS AND CONDITIONS OF SUCH POLICIES. LIMITS SHOWN MAY HAVE BEEN REDUCED BY PAID CLAIMS

INSR LTR	TYPE OF INSURANCE	ADDL SUBR INSD W/O	POLICY NUMBER	POLICY EFF (MM/DD/YYYY)	POLICY EXP (MM/DD/YYYY)	LIMITS
A	<input checked="" type="checkbox"/> COMMERCIAL GENERAL LIABILITY <input type="checkbox"/> CLAIMS-MADE <input checked="" type="checkbox"/> OCCUR  GEN'L AGGREGATE LIMIT APPLIES PER: <input checked="" type="checkbox"/> POLICY <input type="checkbox"/> PRO-JECT <input type="checkbox"/> LOC OTHER:		60418952	9/1/2016	9/1/2017	EACH OCCURRENCE \$ 1,000,000 DAMAGE TO RENTED PREMISES (Ea occurrence) \$ 100,000 MED EXP (Any one person) \$ 5,000 PERSONAL & ADV INJURY \$ 1,000,000 GENERAL AGGREGATE \$ 2,000,000 PRODUCTS - COMP/OP AGG \$ 2,000,000 Liquor Liability Exclusion \$
B	AUTOMOBILE LIABILITY <input type="checkbox"/> ANY AUTO <input type="checkbox"/> ALL OWNED AUTOS <input checked="" type="checkbox"/> SCHEDULED AUTOS <input type="checkbox"/> HIRED AUTOS <input type="checkbox"/> NON-OWNED AUTOS		01817731-4	9/1/2016	9/1/2017	COMBINED SINGLE LIMIT (Ea accident) \$ 1,000,000 BODILY INJURY (Per person) \$ BODILY INJURY (Per accident) \$ PROPERTY DAMAGE (Per accident) \$ Policy Fee \$
	UMBRELLA LIAB <input type="checkbox"/> OCCUR EXCESS LIAB <input type="checkbox"/> CLAIMS-MADE DED <input type="checkbox"/> RETENTION \$					EACH OCCURRENCE \$ AGGREGATE \$ \$
C	WORKERS COMPENSATION AND EMPLOYERS' LIABILITY ANY PROPRIETOR/PARTNER/EXECUTIVE OFFICER/MEMBER EXCLUDED? (Mandatory in NH) If yes, describe under DESCRIPTION OF OPERATIONS below	Y/N <input type="checkbox"/> N/A	99909508	9/1/2016	9/1/2017	PER STATUTE <input type="checkbox"/> OTH-ER <input type="checkbox"/> E L EACH ACCIDENT \$ 1,000,000 E L DISEASE - EA EMPLOYEE \$ 1,000,000 E L DISEASE - POLICY LIMIT \$ 1,000,000

DESCRIPTION OF OPERATIONS / LOCATIONS / VEHICLES (ACORD 101, Additional Remarks Schedule, may be attached if more space is required)

The Parish of Jefferson, its districts, departments, and agencies under the direction of the Parish President and Parish Council are named as additional insured on the general liability and auto liability policies when required by written contract. The general liability and workers comp insurers will have no right of recovery or subrogation against the Parish of Jefferson, its Districts, Departments and Agencies under the direction of the Parish President and Parish Council, it being the intention of the parties that the General Liability and Workers Compensation policies described above shall protect both parties and be primary coverage for any and all losses covered by the described insurance. Bid No: 50-00119704

## CERTIFICATE HOLDER

The Parish of Jefferson, its Districts, Department & Agencies under the direction of the Parish President & the Parish Council  
Department of Engineering  
1221 Elmwood Park Blvd Su 802  
Jefferson, LA 70123

## CANCELLATION

SHOULD ANY OF THE ABOVE DESCRIBED POLICIES BE CANCELLED BEFORE THE EXPIRATION DATE THEREOF, NOTICE WILL BE DELIVERED IN ACCORDANCE WITH THE POLICY PROVISIONS.

AUTHORIZED REPRESENTATIVE

E Ducasse Sr./DARLY

Edward B. Ducasse, Sr.

## CORPORATE RESOLUTION

EXCERPT FROM MINUTES OF MEETING OF THE BOARD OF DIRECTORS OF  
CIMSCO, INC.  
INCORPORATED.

AT THE MEETING OF DIRECTORS OF CIMSCO, INC.  
INCORPORATED, DULY NOTICED AND HELD ON November 1, 2016  
A QUORUM BEING THERE PRESENT, ON MOTION DULY MADE AND SECONDED. IT  
WAS:

RESOLVED THAT Jeffrey DeVillier, BE AND IS HEREBY  
APPOINTED, CONSTITUTED AND DESIGNATED AS AGENT AND ATTORNEY-IN-  
FACT OF THE CORPORATION WITH FULL POWER AND AUTHORITY TO ACT ON  
BEHALF OF THIS CORPORATION IN ALL NEGOTIATIONS, BIDDING, CONCERNS  
AND TRANSACTIONS WITH THE PARISH OF JEFFERSON OR ANY OF ITS AGENCIES,  
DEPARTMENTS, EMPLOYEES OR AGENTS, INCLUDING BUT NOT LIMITED TO, THE  
EXECUTION OF ALL BIDS, PAPERS, DOCUMENTS, AFFIDAVITS, BONDS, SURETIES,  
CONTRACTS AND ACTS AND TO RECEIVE ALL PURCHASE ORDERS AND NOTICES  
ISSUED PURSUANT TO THE PROVISIONS OF ANY SUCH BID OR CONTRACT, THIS  
CORPORATION HEREBY RATIFYING, APPROVING, CONFIRMING, AND ACCEPTING  
EACH AND EVERY SUCH ACT PERFORMED BY SAID AGENT AND ATTORNEY-IN-  
FACT.

I HEREBY CERTIFY THE FOREGOING TO BE  
A TRUE AND CORRECT COPY OF AN  
EXCERPT OF THE MINUTES OF THE ABOVE  
DATED MEETING OF THE BOARD OF  
DIRECTORS OF SAID CORPORATION, AND  
THE SAME HAS NOT BEEN REVOKED OR  
RESCINDED.

Ashley Riviere  
SECRETARY-TREASURER

5/23/17  
DATE



Non-Public Works Bid

AFFIDAVIT

STATE OF LA

PARISH/COUNTY OF Jefferson

BEFORE ME, the undersigned authority, personally came and appeared: JEFF  
Devine, (Affiant) who after being by me duly sworn, deposed and said that  
he/she is the fully authorized AGENT of Consco (Entity),  
the party who submitted a bid in response to Bid Number 50-119704, to the Parish of  
Jefferson.

Affiant further said:

Campaign Contribution Disclosures

(Choose A or B, if option A is indicated please include the required attachment):

Choice A \_\_\_\_\_ Attached hereto is a list of all campaign contributions, including the date and amount of each contribution, made to current or former elected officials of the Parish of Jefferson by Entity, Affiant, and/or officers, directors and owners, including employees, owning 25% or more of the Entity during the two-year period immediately preceding the date of this affidavit or the current term of the elected official, whichever is greater. Further, Entity, Affiant, and/or Entity Owners have not made any contributions to or in support of current or former members of the Jefferson Parish Council or the Jefferson Parish President through or in the name of another person or legal entity, either directly or indirectly.

Choice B X there are NO campaign contributions made which would require disclosure under Choice A of this section.

Debt Disclosures

**(Choose A or B, if option A is indicated please include the required attachment):**

Choice A \_\_\_\_\_

Attached hereto is a list of all debts owed by the affiant to any elected or appointed official of the Parish of Jefferson, and any and all debts owed by any elected or appointed official of the Parish to the Affiant.

Choice B X

There are **NO** debts which would require disclosure under Choice A of this section.

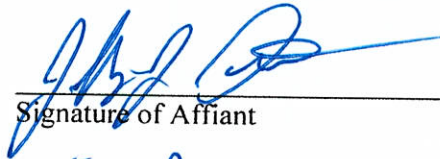
Affiant further said:

~~That Affiant has employed no person, corporation, firm, association, or other organization, either directly or indirectly, to secure the public contract under which he received payment, other than persons regularly employed by the Affiant whose services in connection with the construction, alteration or demolition of the public building or project or in securing the public contract were in the regular course of their duties for Affiant; and~~

*[The remainder of this page is intentionally left blank.]*



That no part of the contract price received by Affiant was paid or will be paid to any person, corporation, firm, association, or other organization for soliciting the contract, other than the payment of their normal compensation to persons regularly employed by the Affiant whose services in connection with the construction, alteration or demolition of the public building or project were in the regular course of their duties for Affiant.

  
Signature of Affiant

Jeff DeWitt  
Printed Name of Affiant

SWORN AND SUBSCRIBED TO BEFORE ME

ON THE 24<sup>th</sup> DAY OF May, 2017.

  
Notary Public

LISA ORLANDO  
Printed Name of Notary

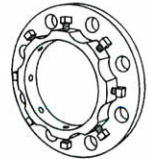
146644  
Notary/Bar Roll Number

My commission expires upon death



# SUBMITTAL INFORMATION

## Adapter Flange (UFA400-C-x series)

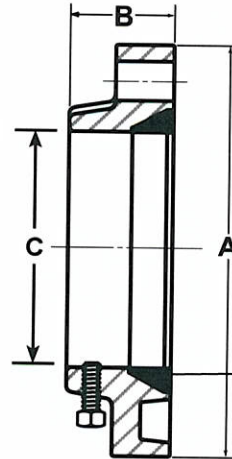
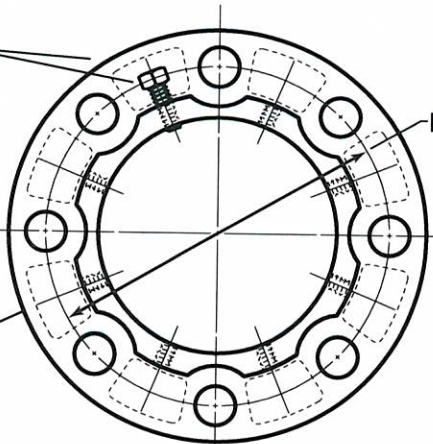


### UNI-FLANGE SERIES 400 ADAPTER FLANGE FOR DUCTILE IRON PIPE

Set Screw - AISI 4140 Steel;  
Tensile 190,000 psi minimum.  
Heat treated to  
Rockwell C 35-44, and zinc  
plated for corrosion resistance

Flange - Ductile Iron --ASTM  
A536, Grade 65-45-12.  
Drilling to ANSI B16.1 (125 lb.  
cast iron) or ANSI B16.5  
(150 lb. steel)

Color Code: Red for ductile  
iron applications



Gasket - SBR (optional Buna-N  
or EPDM)

NOM. PIPE SIZE	DUCTILE IRON PIPE		APPROX. WT. LBS.	PRESSURE RATING PSI	SET SCREWS		FLANGE			BOLT CIRCLE DIA.	✓ SUBMITTED ITEM(S)
	OD	CATALOG NO.			NUMBER	SIZE	OD A	THICKNESS B	APPROX. ID C		
2"	2.50	UFA400-C-2	5	250	4	1/2"x1"	6"	2"	2-5/8"	4-3/4"	
3"	3.96	UFA400-C-3	8	250	4	1/2"x1"	7-1/2"	2-1/16"	4-1/16"	6"	
4"	4.80	UFA400-C-4	11	250	8	1/2"x1"	9"	2-1/16"	4-7/8"	7-1/2"	
6"	6.90	UFA400-C-6	14	250	8	5/8"x1-1/4"	11"	2-1/8"	7"	9-1/2"	
8"	9.05	UFA400-C-8	21	250	8	5/8"x1-1/4"	13-1/2"	2-1/8"	9-1/8"	11-3/4"	
10"	11.10	UFA400-C-10	38	250	12	5/8"x1-1/4"	16"	2-3/16"	11-3/16"	14-1/4"	
12"	13.20	UFA400-C-12	56	250	12	5/8"x1-1/4"	19"	2-1/4"	13-5/16"	17"	
14"	15.30	UFA400-C-14	70	150	12	5/8"x1-1/4"	21"	2-5/8"	15-7/16"	18-3/4"	
16"	17.40	UFA400-C-16	79	150	16	5/8"x1-1/4"	23-1/2"	2-11/16"	17-9/16"	21-1/4"	
18"	19.50	UFA400-C-18	90	150	16	3/4"x2"	25"	2-13/16"	19-5/8"	22-3/4"	
20"	21.60	UFA400-C-20	145	150	20	3/4"x2"	27-1/2"	2-15/16"	21-3/4"	25"	
24"	25.80	UFA400-C-24	175	150	20	3/4"x2"	32"	3-1/8"	25-15/16"	29-1/2"	
30"	32.00	UFA400-C-30	270	100	28	1"x2-1/4"	38-3/4"	4"	32-3/16"	36"	
36"	38.30	UFA400-C-36	400	100	32	1"x2-1/4"	46"	4-1/2"	38-1/2"	42-3/4"	
42"	44.50	UFA400-C-42	495	100	36	1"x2-1/4"	53"	4-3/4"	44-3/4"	49-1/2"	
48"	5.80	UFA400-C-48	660	100	44	1"x2-1/4"	59-1/2"	4-7/8"	51-3/16"	56"	

### FEATURES

- Restraint is provided by a set screw locking device similar to that used in mechanical joint retainer glands.
  - The gasket is the standard AWWA mechanical joint gasket.
  - Designed for ease of on-site installation. Eliminates bolt hole alignment problems. Allows for pipe deflection.
  - Series 400 adapter flanges are not recommended for use on PVC pipe. Use the Uni-Flange Series 900 flanges instead.
  - Optional uni-torque set screws are available for use with 2"-16" Series 400 adapter flanges for ductile iron pipe, class 52-56.
- To order, add -UT to the catalog number. Example: UFA400-C-6-UT.

The Ford Meter Box Company considers the information in this submittal form to be correct at the time of publication. Item and option availability, including specifications, are subject to change without notice. Please verify that your product information is current.



**The Ford Meter Box Company, Inc.**  
P.O. Box 443, Wabash, Indiana U.S.A. 46992-0443  
Phone: 260-563-3171 / Fax: 800-826-3487  
Overseas Fax: 260-563-0167  
www.fordmeterbox.com

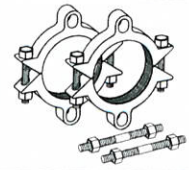
05/27/14

Submitted By:



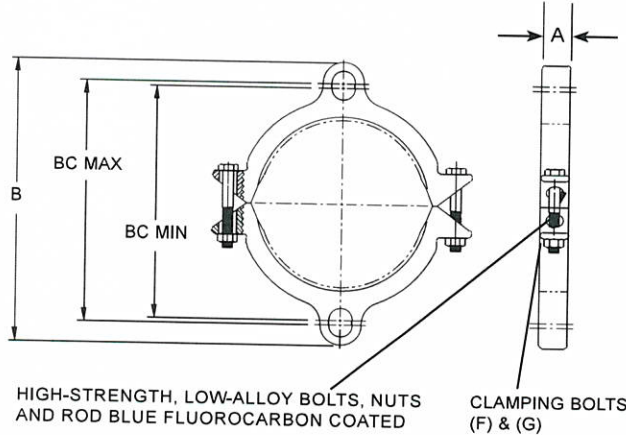
# SUBMITTAL INFORMATION

## Uni-Flange Restraint (*UFR1390-C-x-RB-I* style)

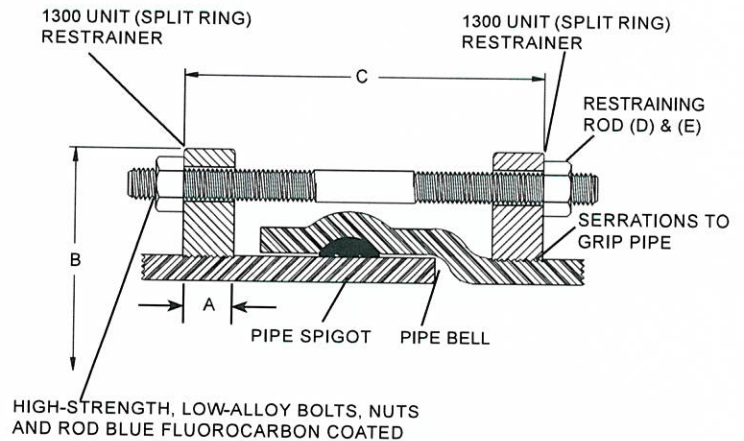


**SERIES 1390-C RESTRAINT DEVICE FOR C900 PVC AND DUCTILE IRON PIPE PIPE BELL JOINTS  
WITH BLUE FLUOROCARBON-COATED ACCESSORIES**

**1300 SPLIT RESTRAINER**



**1390 ASSEMBLY**



NOM PIPE SIZE	PVC PIPE WITH DI PIPE OD STYLE 1390-C		A	B APPROX	C MAX	RESTRAINING RODS		CLAMPING BOLTS		BC MAX	BC MIN	✓ SUBMITTED ITEMS
	OD	CATALOG No.				No. D	SIZE E	No. F	SIZE G			
4"	4.80	UFR1390-C-4-RB-I	1-1/8"	9-1/8"	15"	2	3/4" x 17"	4	5/8" x 3-1/2"	7.50"	7.14"	
6"	6.90	UFR1390-C-6-RB-I	1-1/8"	11-1/8"	15"	2	3/4" x 17"	4	5/8" x 3-1/2"	9.50"	9.14"	
8"	9.05	UFR1390-C-8-RB-I	1-1/4"	14-5/8"	15"	2	3/4" x 17"	4	3/4" x 4"	12.98"	11.36"	
10"	11.10	UFR1390-C-10-RB-I	1-3/8"	16-5/8"	22"	4	3/4" x 24"	4	7/8" x 5"	15.00"	13.50"	
12"	13.20	UFR1390-C-12-RB-I	1-3/8"	19-1/4"	22"	4	3/4" x 24"	4	7/8" x 5"	17.62"	15.62"	

### FEATURES

- 4" - 12" sizes: Cast ductile iron per ASTM A536 grade 65-45-12
- 360° contact and support of the pipe wall
- Restraining rods are high strength, low alloy steel per ANSI / AWWA C111 / A21.11, with blue fluorocarbon-coating
- Clamping bolts and nuts are Grade 5 with blue fluorocarbon coating
- Black e-coat epoxy-coated
- Rated at full-rated pressure of any class of PVC pipe, minimum 2:1 safety factor.
- Ductile iron pipe shall have the following pressure ratings: 4" through 8" = 250 psi  
10" and 12" = 200 psi

The Ford Meter Box Company considers the information in this submittal form to be correct at the time of publication. Item and option availability, including specifications, are subject to change without notice. Please verify that your product information is current.



**The Ford Meter Box Company, Inc.**  
P.O. Box 443, Wabash, Indiana U.S.A. 46992-0443  
Phone: 260-563-3171 / Fax: 800-826-3487  
Overseas Fax: 260-563-0167  
www.fordmeterbox.com

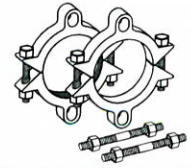


08/01/16

Submitted By:

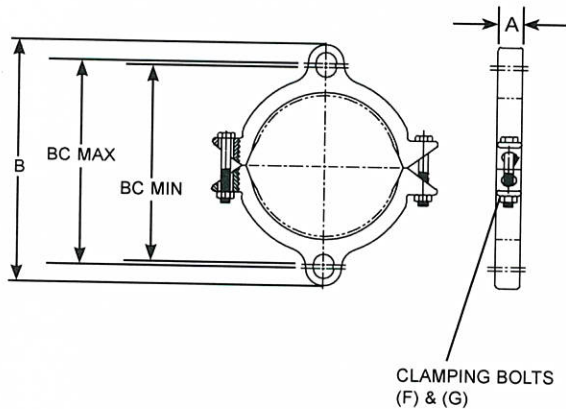
# SUBMITTAL INFORMATION

## Uni-Flange Restraint (*UFR1355-C-x-RB-U style*)

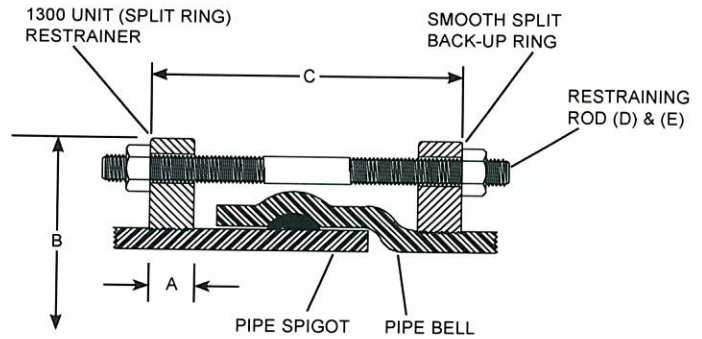


4"-12" SERIES 1355-C RESTRAINT DEVICE FOR C900 PVC PIPE BELL JOINTS  
WITH BLUE FLUOROCARBON-COATED ACCESSORIES

### 1300 SPLIT RESTRAINER



### 1355 ASSEMBLY



NOM PIPE SIZE	PVC PIPE WITH DI PIPE OD STYLE 1355-C		A	B APPROX	C MAX	RESTRAINING RODS		CLAMPING BOLTS		BC MAX	BC MIN	✓ SUBMITTED ITEMS
	OD	CATALOG NO.				No. D	SIZE E	No. F	SIZE G			
4"	4.80	UFR1355-C-4-RB-U	1-1/8"	9-1/8"	12"	2	3/4" x 17"	4	5/8" x 3-1/2"	7.50"	7.14"	
6"	6.90	UFR1355-C-6-RB-U	1-1/8"	11-1/8"	13"	2	3/4" x 17"	4	5/8" x 3-1/2"	9.50"	9.14"	
8"	9.05	UFR1355-C-8-RB-U	1-1/4"	14-5/8"	15"	2	3/4" x 17"	4	3/4" x 4"	12.98"	11.36"	
10"	11.10	UFR1355-C-10-RB-U	1-3/8"	16-5/8"	16"	4	3/4" x 24"	4	7/8" x 5"	15.00"	13.50"	
12"	13.20	UFR1355-C-12-RB-U	1-3/8"	19-1/4"	18"	4	3/4" x 24"	4	7/8" x 5"	17.62"	15.62"	

### FEATURES

- 4" - 12" sizes: Cast ductile iron per ASTM A536, Grade 65-45-12
- 360° contact and support of the pipe wall
- Restraining rods are high strength, low alloy steel per ANSI / AWWA C111 / A21.11 with blue fluorocarbon coating
- Rated at full-rated pressure of any class of PVC pipe, minimum 2:1 safety factor
- Rated for 150 psi on ductile iron pipe up to 10". Rated for 125 psi on 12" size
- Castings are manufactured in the United States of America

The Ford Meter Box Company considers the information in this submittal form to be correct at the time of publication. Item and option availability, including specifications, are subject to change without notice. Please verify that your product information is current.



**The Ford Meter Box Company, Inc.**

P.O. Box 443, Wabash, Indiana U.S.A. 46992-0443  
Phone: 260-563-3171 / Fax: 800-826-3487  
Overseas Fax: 260-563-0167  
www.fordmeterbox.com



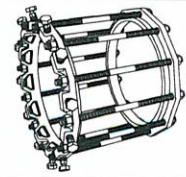
04/26/16

Submitted By:



# SUBMITTAL INFORMATION

## Uni-Flange Retainer (UFR1450-D-x-RB-I style)

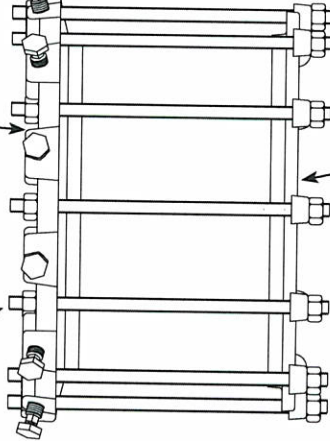


### WEDGE ACTION SERIES 1450-D RESTRAINT ASSEMBLY (WITH BLUE FLUOROCARBON-COATED ACCESSORIES) FOR DUCTILE IRON SLIP JOINT BELL PIPE

**Auto-Tork® Set Screw**  
Ductile Iron per ASTM  
A536-84 Grade 65-45-12  
ANSI/AWWA C111/  
A21.11

**Series 1400**  
Ductile Iron per ASTM  
A536-84 Grade 65-45-12  
ANSI/AWWA C111/  
A21.11

**Tie Rod and Nuts**  
High strength, low  
alloy steel per ANSI/  
AWWA C111/A21.11  
or high strength steel  
per ASTM A193, grade  
B7 (blue fluorocarbon-  
coated)



**Mechanical Joint Gland**  
Ductile Iron per ASTM  
A536-84 Grade 65-45-12  
ANSI/AWWA C111/  
A21.11 or Carbon Steel  
per ASTM A36  
(Assembled on bell end)

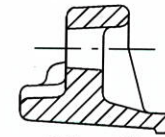
#### 1400 PROFILE



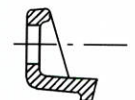
30" - 48"



3" - 24"



30" - 48"



3" - 24"

NOM. PIPE SIZE	PIPE O.D.	RODS No.	LENGTH	RATES DIA.	MAX. PRESSURE (PSI)	**BELL DIA.	APPROX. WT. LBS.	CATALOG NUMBER	✓ SUBMITTED ITEM(S)
3"	3.96	4	14"	5/8"	350	5.50"	12	UFR1450-D-3-RB-I	
4"	4.80	4	17"	3/4"	350	6.62"	20	UFR1450-D-4-RB-I	
6"	6.90	6	17"	3/4"	350	8.62"	29	UFR1450-D-6-RB-I	
8"	9.05	6	17"	3/4"	350	10.88"	35	UFR1450-D-8-RB-I	
10"	11.10	8	24"	3/4"	350	13.12"	56	UFR1450-D-10-RB-I	
12"	13.20	8	24"	3/4"	350	15.38"	62	UFR1450-D-12-RB-I	
14"	15.30	10	24"	3/4"	350	17.88"	90	UFR1450-D-14-RB-I	
16"	17.40	12	24"	3/4"	350	20.12"	113	UFR1450-D-16-RB-I	
18"	19.50	12	24"	3/4"	250	22.38"	132	UFR1450-D-18-RB-I	
20"	21.60	14	24"	3/4"	250	24.62"	160	UFR1450-D-20-RB-I	
24"	25.80	16	24"	3/4"	250	29.12"	181	UFR1450-D-24-RB-I	
30"	32.00	10	24"	1"	250	35.80"	341	* UFR1450-D-30-RB-I	
36"	38.30	12	24"	1"	250	42.60"	430	* UFR1450-D-36-RB-I	
42"	44.50	28	52"	1-1/4"	250	49.25"	1350	UFR1450-D-42-RB-I	
48"	50.80	32	52"	1-1/4"	250	56.125"	1570	UFR1450-D-48-RB-I	

\* Backup ring is steel for 30" and 36"

\*\* Connecting rods WILL NOT CLEAR a pipe bell with a maximum diameter larger than the listed measurement.

#### FEATURES

- Mechanical joint gland: Ductile iron per ASTM A536 grade 65-45-12 or carbon steel per ASTM A36
- Wedge activating screw: Ductile iron per ASTM A536 grade 65-45-12
- Gland: Ductile iron per ASTM A536 grade 65-45-12
- Wedge: Ductile iron per ASTM A536 heat treated to hardness of 370 BHN minimum
- Restraining rods & nuts: High strength, low alloy steel per ANSI/AWWA C111/A21.11 or high strength steel per ASTM A193, grade B7, blue fluorocarbon coated
- Coating: Black e-coat epoxy
- New installations only

The Ford Meter Box Company considers the information in this submittal form to be correct at the time of publication. Item and option availability, including specifications, are subject to change without notice. Please verify that your product information is current.



**The Ford Meter Box Company, Inc.**  
P.O. Box 443, Wabash, Indiana U.S.A. 46992-0443  
Phone: 260-563-3171 / Fax: 800-826-3487  
Overseas Fax: 260-563-0167  
www.fordmeterbox.com

09/02/16

Submitted By:



# HYMAX<sup>®</sup>

## COUPLING 1.5"-12"

### FOR EXTREME PERFORMANCE

- The original HYMAX<sup>®</sup> - invented and manufactured by Krausz
- Market leading, two-bolt, wide-range coupling
- Field proven in North America since 1999
- Over 1 million successful installations in the USA alone



COUPLINGS



CLAMPS



RESTRAINTS



# KRAUSZ

Repair the past. Connect the future.



# HYMAX<sup>®</sup> COUPLING

THE MOST  
EFFECTIVE  
COUPLING  
SOLUTION  
AVAILABLE

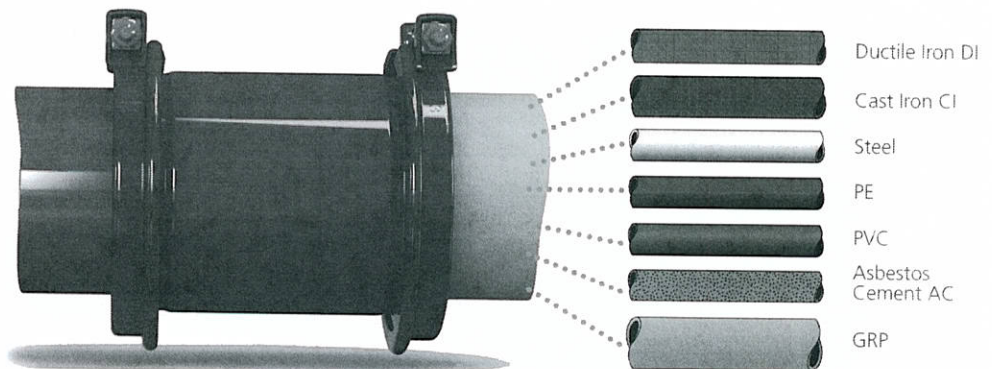
**Nominal sizes:**

1.5" - 12"

14" - 24" (see Large  
Diameter brochure)

**Working pressure:**

260 psi



HYMAX effectively repairs and connects a wide range of piping types and circumferences. Its flexible and patented design allows you to join pipes made of the same or different materials, and with varying diameters. By addressing so many variable pipe configurations, HYMAX enables you to reduce your inventory as you respond to and contain repair situations much faster.

## HYMAX PRODUCT HIGHLIGHTS

**Fast, Easy Installation**

Via ready-to-use stab-in design available in all ranges and only two top-facing bolts.

**Advanced Anti-Galling**

HYMAX nuts and bolts go through a unique dry treatment process, Molecular Anti-Galling (MAG), based on embedded zinc. MAG eliminates the need to grease bolts and the effects of dirt and sand, preventing galling and enabling repeated bolt tightening.

**Robust Corrosion Prevention**

Through fusion-bonded epoxy and stainless steel nuts and bolts.

**Joins Same or Different Pipe Diameters**

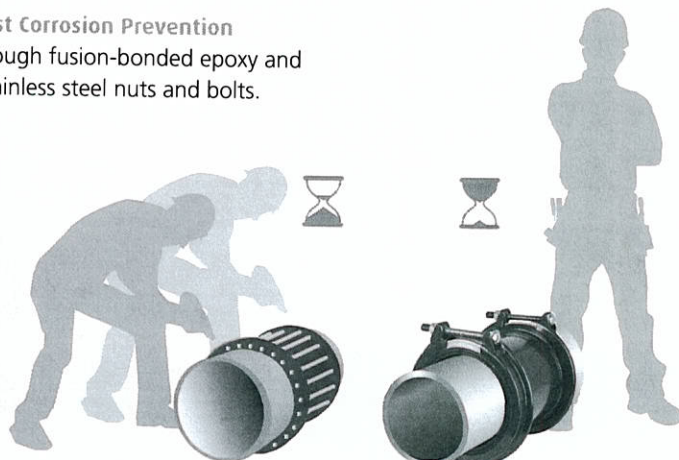
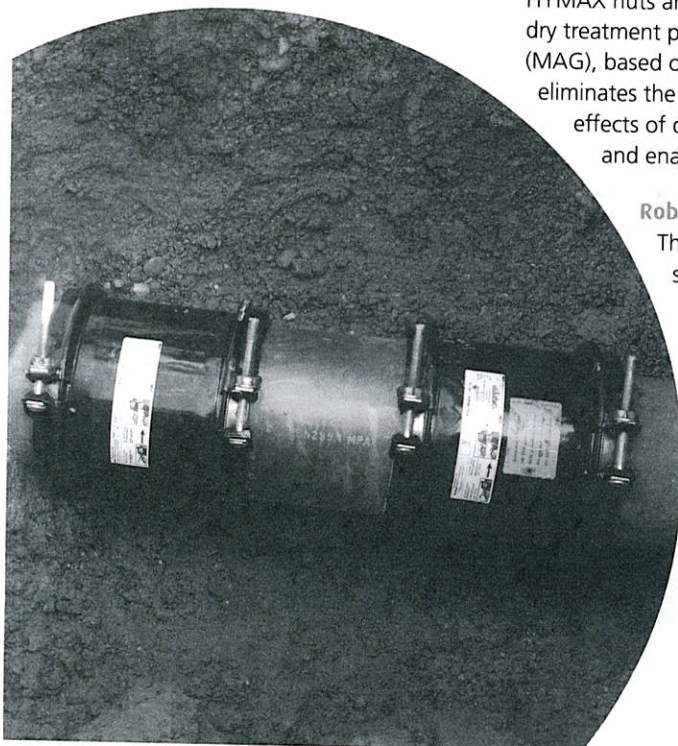
HYMAX has the ability to join pipes with different diameters of up to 1.30 inches.

**Meets and Exceeds Standards**

AWWA C-219, NSF – 372 and NSF 61.

**Flexible Connection**

Prevents damage and cracking from ground shifts during and after installation.





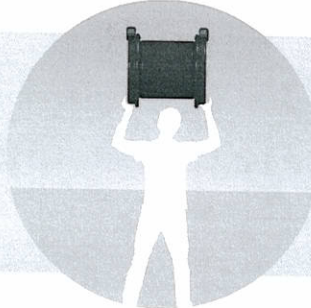
# HYMAX COUPLING - EXTREME PERFORMANCE IN ALL ENVIRONMENTS

**PROVEN,  
HIGHLY  
RELIABLE  
SOLUTION**

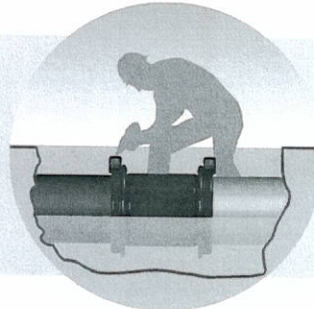
**1,000,000+**

- Unique, advanced design with an install base dating from 1999
- Field proven with over 1 million units installed in the US market alone

**USER  
FRIENDLY**

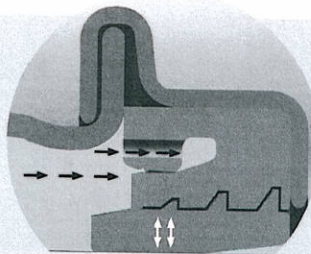


HYMAX's superior, lightweight construction enables fast and easy installation by one person



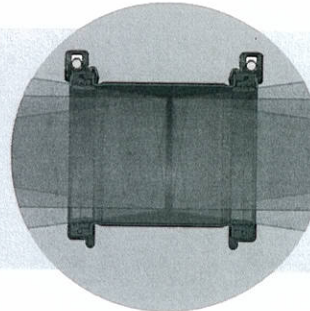
Unique top facing, 2-bolt and stab-in design eliminates the need for extensive under-pipe digging and work

**REDUCES  
FUTURE  
BREAKS**



#### **Unique dual sealing:**

In addition to mechanical sealing, HYMAX achieves hydraulic sealing via its patented gasket that self-inflates using flowing water pressure



HYMAX's unique hydraulic sealing enables continuous dynamic angular deflection, which substantially reduces future breaks

**SEAMLESS  
DESIGN,  
FLEXIBLE  
STRENGTH**



#### **Unitary steel end ring design provides:**

- Fortified strength
- Enhanced flexibility allowing improved fitting to pipe shape

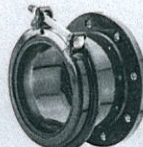
## **DIVERSE PRODUCT LINE**

Addressing all pipe coupling requirements

HYMAX Reducer



HYMAX Flanged Adaptor



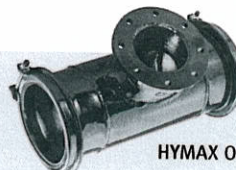
HYMAX Cathodic



HYMAX Flanged Long Body



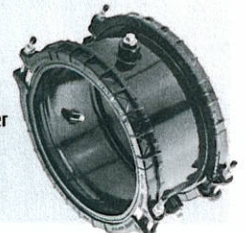
HYMAX Outlet



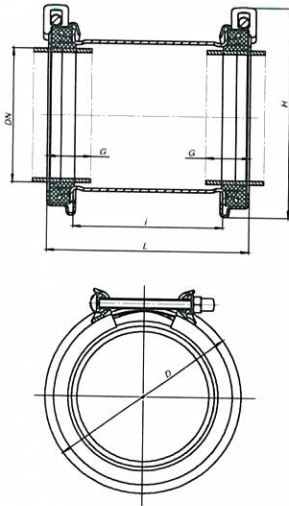
HYMAX Long Body



Large Diameter HYMAX

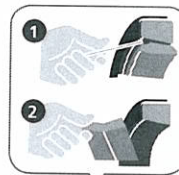






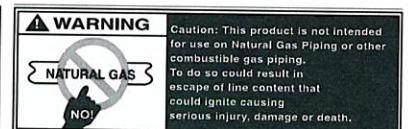
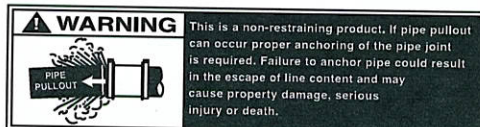
## PRODUCT SPECIFICATIONS

1. HYMAX meets or exceeds all specifications of AWWA Standard C219, NSF-61 and NSF-372.
2. Center Ring - ASTM A 53 Grade A steel.
3. End Rings - ASTM A 795 steel.
4. Gaskets - EPDM compounded for water and sewage, meets NSF 61 and NSF-372 standards for contact with drinking water. Working temperature for continuous operations: -20°F up to +180°F, for shorter operating time: up to +215°F.
5. Nuts and Bolts - ANSI 304 stainless steel. Rolled thread and Molecular Anti Galling (MAG) treatment.
6. Bridge - ANSI 304 stainless steel.
7. Coating - 100% fusion bonded epoxy for enhanced corrosion protection. Nominal thickness 14 Mil., meets NSF-61 and NSF-372 Standard.  
Working Temperature:  
Above ground applications up to +125°F. Under ground applications up to +150°F.
8. G = Min. pipe insertion of 2.25 inches.
9. Deflection up to 4" per side.
10. Working pressure: 260 psi



Part Number	Reference Number	Nominal Pipe Size (inch)	Overall Range (inch)	Low Range: Before removal of the inner layer (inch)	High Range: After removal of the inner layer (inch)	D (inch)	H (inch)	i (inch)	L (inch)	Torque (Ft-Lbs)	Approx. Weight (Lbs)
20000213260	860-56-0041-16	1.5"	1.61-2.13	1.61-1.97	1.96-2.13	Ø3.9	5.0	3.9	6.1	35	5
20000303260	860-56-0054-16	2"	2.10-3.03	2.10-2.60	2.56-3.03	Ø5.2	5.7	3.9	6.7	50	7
20000433260	860-56-0088-16	3"	3.46-4.33	3.46-3.90	3.86-4.33	Ø6.7	7.1	5.9	8.7	50	10
20000563260	860-56-0108-16C	4"	4.25-5.63	4.25-5.00	4.92-5.63	Ø8.7	9.3	5.9	8.8	65	15
20000637260	860-56-0130-16	5"	5.12-6.38	5.12-5.75	5.71-6.38	Ø9.5	10.0	8.0	10.8	65	19
20000768260	860-56-0163-16	6"	6.42-7.68	6.42-7.05	7.01-7.68	Ø10.8	11.3	8.0	10.8	65	23
20000874260	860-56-0190-16	7"	7.48-8.74	7.48-8.11	8.07-8.74	Ø11.7	12.2	8.0	10.8	65	24
20000984260	860-56-0217-16	8"	8.54-9.84	8.54-9.17	9.13-9.84	Ø12.9	13.1	8.0	10.8	65	28
20001200260	860-56-0272-16	10"	10.70-12.00	10.70-11.37	11.33-12.00	Ø15.0	15.6	8.0	10.8	65	32
20001226260	860-56-0278-16	10" o.s.	10.96-12.26	10.96-11.63	11.59-12.26	Ø15.3	15.8	8.0	10.8	65	33
20001366260	860-56-0315-16	12"	12.40-13.66	12.40-13.03	12.99-13.66	Ø16.6	17.5	8.0	10.8	65	39
20001441260	860-56-0334-16	12" o.s.	13.15-14.41	13.15-13.78	13.74-14.41	Ø17.3	18.1	8.0	10.8	65	39

For more information about HYMAX and other Krausz products visit us at: [www.krauszusa.com](http://www.krauszusa.com)  
For ordering information or to speak with a Krausz representative please contact us at: 855-457-2879 or 855-4KRAUSZ.



## Krausz USA

331 SW 57<sup>th</sup> Avenue  
Ocala, Florida 34474  
[info@krauszusa.com](mailto:info@krauszusa.com)

[www.krauszusa.com](http://www.krauszusa.com)

**KRAUSZ**  
Repair the past. Connect the future.

\*The Hymax Trademark and Patent is property of Krausz Industries Ltd. Note: To extend product life in corrosive environments, poly-wrapping and/or cathodic protection of the coupling is recommended.  
Note: All Stainless Steel Bolts are coated with a Dry Anti-Seize Lubricant that prevents galling. Use of any additional wet-type lubricant on the bolts will void the warranty of the product.



# HYMAX<sup>®</sup>

FLANGE ADAPTOR AND HYMAX  
LONG BODY FLANGE ADAPTOR  
(1.5"-60")

## PRODUCT SPECIFICATIONS



### FEATURES

- USING THE GAME-CHANGING HYMAX TECHNOLOGY, PROVEN IN OVER 1M INSTALLATIONS IN THE US
- SUITABLE FOR ALL TYPES OF PIPES - DUCTILE IRON, CAST IRON, STEEL, COPPER, PE, PVC, AC, GRP
- PATENTED HYDRAULICALLY-ASSISTED GASKET WITH 2-STAGE SEALING
- LIGHTWEIGHT CONSTRUCTION ENABLES FAST AND EASY INSTALLATION
- ALLOWS 4° DYNAMIC DEFLECTION, REDUCING FUTURE PIPE DAMAGE

### SPECIFICATIONS

#### STANDARDS

HYMAX<sup>®</sup> FLANGE ADAPTOR AND LONG BODY FLANGE ADAPTOR MEET OR EXCEED REQUIREMENTS OF STANDARDS: AWWA C219, NSF-61 AND NSF-372.

#### SIZE/LENGTH

AVAILABLE IN NOMINAL DIAMETER FROM 1.5" - 24" STANDARD.  
26"-60" MTO (MADE TO ORDER). CONTACT KRAUSZ FOR DETAILS.

#### MATERIALS

##### FLANGED BODY

1.5"-12" ASTM A53 GRADE A STEEL.  
14"-60" ASTM A283 / A283M GRADE C STEEL.

##### FLANGE

1.5"-2" OVAL FLANGE FOR FLOW METER.  
3" MEETS ANSI B16.5.  
4"-24" MEETS AWWA CLASS D.  
26"-60" CONTACT KRAUSZ FOR DETAILS.

##### END RINGS

1.5" - 12" ASTM A283 / A283M GRADE C STEEL.  
14" - 16" ASTM A283 / A283M GRADE C STEEL.  
(OR DUCTILE IRON CASTING ASTM A536 GRADE 60-40-18).  
18"-60" ASTM A283 / A283M GRADE C STEEL.

##### SPHERICAL SPACERS

AISI 304L STAINLESS STEEL.

##### GASKET

EPDM COMPOUNDED FOR WATER AND SEWERAGE,  
MEETS INTERNATIONAL STANDARDS FOR CONTACT WITH DRINKING WATER.

##### BRIDGE

AISI 304 STAINLESS STEEL.

##### COATING

100% FUSION BONDED EPOXY FOR ENHANCED CORROSION PROTECTION.  
NOMINAL THICKNESS 14 MIL.

##### NUTS AND BOLTS

AISI 304 STAINLESS STEEL. ROLLED THREAD AND ANTI-GALLING COATING.





# HYMAX<sup>®</sup>

FLANGE ADAPTOR AND HYMAX  
LONG BODY FLANGE ADAPTOR  
(1.5"-60")

## PRODUCT SPECIFICATIONS



### PRODUCT PERFORMANCE (\*)

WORKING TEMPERATURE	-20°F UP TO +125°F			
DYNAMIC DEFLECTION	UP TO 4°			
MIN. PIPE INSERTION	1.5"-12" 2.25"	14"- 60" 4"		
MAXIMUM OFFSET FOR MISALIGNED PIPE	1.5"- 3" 0.2"	4"- 60" 0.24"		
MAXIMUM OUT OF ROUNDNESS	1.5" 0.08"	2"- 3" 0.20"	4"- 12" 0.31"	14"- 60" 0.51"
WORKING PRESSURE	1.5"-24": 175 PSI (26"- 60": CONTACT KRAUSZ FOR DETAILS)			
RATED PRESSURE	1.5"-24": 262 PSI (26"- 60": CONTACT KRAUSZ FOR DETAILS)			
VACUUM TEST	12 PSI			

\* SEE SUBMITTAL DRAWINGS FOR DETAILS.

## PRODUCT TABLES

### HYMAX FLANGE ADAPTOR NOMINAL SIZE 1.5"-2"

Krausz Part Number	Nominal Diameter (inch)	Flange	Overall Range (inch)	Before removal of the inner layer (inch)	After removal of the inner layer (inch)	Bolts Qty. and Size (mm)	Torque (Ft-Lbs)	Working Pressure (PSI)	Rated Pressure (PSI)	Approx. Weight (Lbs)
874-56-01004112	1.5"	1.5"	1.61-2.13	1.61-1.97	1.96-2.13	1 -M12	35	175	262	7
874-56-02005412	2"	2"	2.10-3.03	2.10-2.60	2.56-3.03	1-M12	50	175	262	8

### HYMAX FLANGE ADAPTOR NOMINAL SIZE 3"-12"

Krausz Part Number	Nominal Diameter (inch)	Flange	Overall Range (inch)	Before removal of the inner layer (inch)	After removal of the inner layer (inch)	Bolts Qty. and Size (mm)	Torque (Ft-Lbs)	Working Pressure (PSI)	Rated Pressure (PSI)	Approx. Weight (Lbs)
874-56-03008812	3"	3"	3.46-4.33	3.46-3.90	3.86-4.33	1 -M12	50	175	262	12
874-56-04010812	4"	4"	4.25-5.63	4.25-5.00	4.92-5.63	1 -M14	65	175	262	14
874-56-05013012	5"	5"	5.12-6.38	5.12-5.75	5.71-6.38	1 -M14	65	175	262	21
874-56-06013012	5"	6"	5.12-6.38	5.12-5.75	5.71-6.38	1 -M14	65	175	262	22
874-56-06016312	6"	6"	6.42-7.68	6.42-7.05	7.01-7.68	1 -M14	65	175	262	23
874-56-08019012	7"	8"	7.48-8.74	7.48-8.11	8.07-8.74	1 -M14	65	175	262	31
874-56-08021712	8"	8"	8.54-9.84	8.54-9.17	9.13-9.84	1 -M14	65	175	262	32
874-56-10027212	10"	10"	10.70-12.00	10.70-11.37	11.33-12.00	1 -M14	65	175	262	38
874-56-10027812	10"	10"	10.96-12.26	10.96-11.63	11.59-12.26	1 -M14	65	175	262	41
874-56-12031512	12"	12"	12.40-13.66	12.40-13.03	12.99-13.66	1 -M14	65	175	262	52
874-56-12033412	12"	12"	13.15-14.41	13.15-13.78	13.74-14.41	1 -M14	65	175	262	57

### HYMAX FLANGE ADAPTOR NOMINAL SIZE 14"-24"

Krausz Part Number	Nominal Diameter (inch)	Flange	Overall Range (inch)	Before removal of the inner layer (inch)	After removal of the inner layer (inch)	Bolts Qty. and Size (mm)	Torque (Ft-Lbs)	Working Pressure (PSI)	Rated Pressure (PSI)	Approx. Weight (Lbs)
874-56-14037812	14"	14"	15.00-17.10	15.00-16.10	16.02-17.10	2 -M16	150	175	262	115
874-56-16043412	16"	16"	17.10-19.20	17.10-18.19	18.11-19.20	2 -M16	150	175	262	125
874-56-18048812	18"	18"	19.20-21.30	19.20-20.29	20.21-21.30	2 -M16	150	175	262	135
874-56-20054012	20"	20"	21.25-23.35	21.25-22.35	22.27-23.35	2 -M16	150	175	262	155
874-56-24060612	24"	24"	23.85-25.95	23.85-24.96	24.88-25.95	2 -M16	150	175	262	184
874-56-24062412	24"	24"	24.60-26.70	24.60-25.67	25.59-26.70	2 -M16	150	175	262	187

### HYMAX FLANGE ADAPTOR NOMINAL SIZE 26"-60"

26"-60" - MTO (MADE TO ORDER) IS AVAILABLE



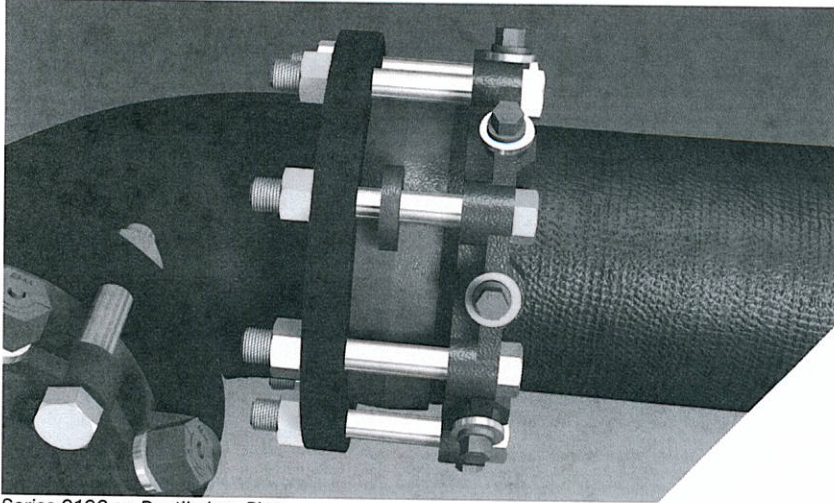


# Series 2100

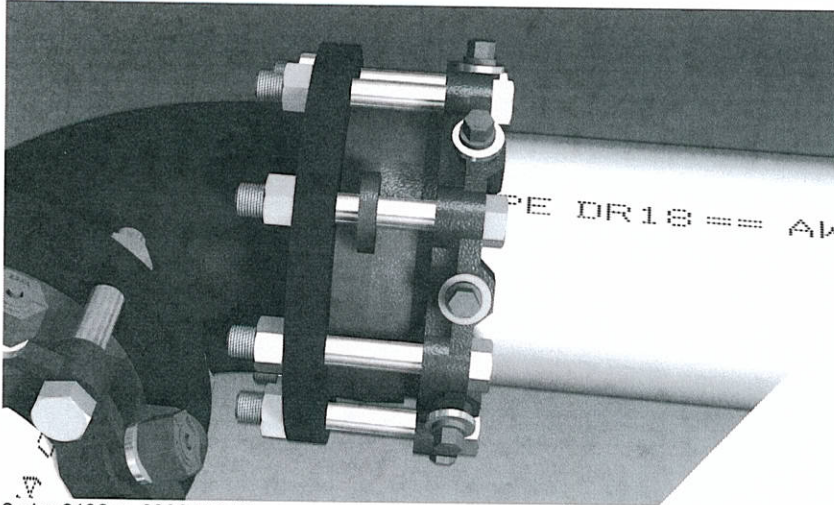
MEGAFLANGE®

Restrained Flange Adapter

U.S. Patent Nos. 4627774 and 5071175



Series 2106 on Ductile Iron Pipe



Series 2106 on C900 PVC Pipe

## Features and Applications:

- MEGAFLANGE adapts and restrains plain end Ductile Iron, PVC, Steel and HDPE pipe to flanged pipe or fittings, where the flange conforms to ANSI/AWWA C111/A21.11 with flange surface facing in accordance with ANSI/AWWA C207 of the latest revision.
- Meets ANSI B16.5 Class 150/125 drilling pattern.
- Flange Bolts are zinc coated, fastener class coated bolts or stainless steel bolts are available
- Not for use on plain end fittings
- MEGA-BOND® Restraint Coating System
- For more information regarding MEGA-BOND, refer to our web site @ [www.ebaa.com](http://www.ebaa.com)
- Minimum 2 to 1 Safety Factor
- Fully Restrained
- Constructed of ASTM A536 Ductile Iron
- UL listed on sizes 3 inch through 12 inch
- FM approved on sizes 4 inch through 12 inch on C900 Class 150 and Class 200 PVC Pipe
- Pipe can be cut to length in the field
- Joint deflection up to 5°
- Easy dismantling allows fast removal of valves, meters or fittings for replacement or repair

For use on water or wastewater pipelines subject to hydrostatic pressure and tested in accordance with either AWWA C600, C605 or ASTM D2774.

## Sample Specification

Restrained flange adapters shall be used in lieu of threaded or welded flanged spool pieces. Flanged adapters shall be made of ductile iron conforming to ASTM A536 and have flange bolt circles that are compatible with ANSI/AWWA C110/A21.10 (125#/Class 150 Bolt Pattern).

Restraint for flange adapter shall consist of a plurality of individual actuated gripping wedges to maximize restraint capability. Torque limiting actuating screws shall be used to insure proper initial set of gripping wedges.

The flange adapters shall be capable of deflection during assembly or permit lengths of pipe to be field cut to allow a minimum 0.6 inch gap between the end of the pipe and the mating flange without affecting the integrity of the seal.

All internal surfaces of the gasket ring (wetted parts) shall be lined with a minimum of 15 mils of fusion bonded epoxy conforming to the applicable requirements of ANSI/AWWA C213. Sealing gaskets shall be constructed of EPDM. The coating shall meet ANSI/NSF-61. Exterior surfaces of the gasket ring shall be coated with a minimum of 6 mils of fusion bonded epoxy conforming to the applicable requirements of ANSI/AWWA C116/A21.16.

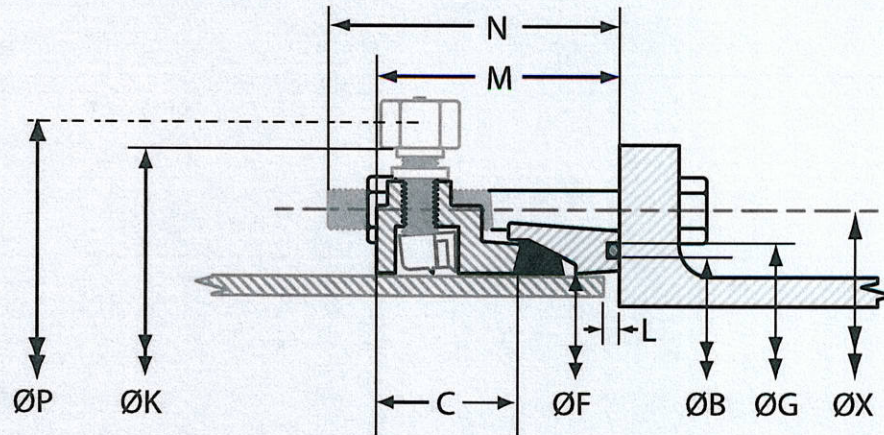
Restraint Ring coated with MEGA-BOND® Restraint Coating System More Information regarding MEGA-BOND can be found at [www.ebaa.com](http://www.ebaa.com).

Pressure ratings shall be a minimum of those shown in the table within current brochure.

The flange adapter shall be the Series 2100 MEGAFLANGE® Restrained Flange Adapter as produced by EBAA Iron, Inc. or approved equal.



## Series 2100 Submittal Reference Drawing



Nominal Pipe Size	Series Number	Restraint Ring			Gasket Ring			Bolts				L MAX.	Assembly Deflection Degrees	M	P*	Ship Weight (lbs.)
		K	F	C	F	B	G	No.	Dia.	Length	X					
3	2103	7.5	4.1	2.2	4.1	4.3	4.9	4	5/8	5 1/2	6.00	0.7	5.0	4.0	9.2	14
4	2104	9.0	4.9	2.2	4.9	5.4	6.0	8	5/8	5 1/2	7.50	0.6	5.0	4.0	10.0	20
6	2106	11.0	7.0	2.3	7.0	7.5	8.1	8	3/4	6	9.50	0.8	5.0	4.3	12.1	32
8	2108	13.5	9.2	2.4	9.2	9.8	10.4	8	3/4	6	11.75	0.9	5.0	4.5	14.3	38
10	2110	16.0	11.2	2.5	11.2	11.8	12.4	12	7/8	7 1/2	14.25	1.0	3.0	4.7	16.3	65
12	2112	19.0	13.3	2.5	13.3	13.8	14.4	12	7/8	7 1/2	17.00	1.0	3.0	4.8	18.4	73
14	2114	21.0	15.5	2.5	15.5	16.1	16.9	12	1	8	18.75	1.3	2.0	5.0	20.6	89
16	2116	23.5	17.6	2.5	17.6	18.2	19.0	16	1	8	21.25	1.3	2.0	5.0	22.6	109
18	2118	25.0	19.7	2.6	19.7	20.2	21.0	16	1 1/8	8 1/2	22.75	1.3	1.5	5.1	24.7	134
20	2120	27.3	21.8	2.6	21.8	22.4	23.2	20	1 1/8	8 1/2	25.00	1.3	1.5	5.1	26.8	157
24	2124	32.0	26.0	2.6	26.0	26.7	27.5	20	1 1/4	8 1/2	29.50	1.3	1.0	5.1	31.0	192
30	2130	38.5	32.2	3.3	32.2	32.9	34.1	28	1 1/4	11	36.00	2.0	1.0	6.0	38.8	296
36	2136	45.5	38.5	3.3	38.5	39.2	40.4	32	1 1/2	10 1/2	42.75	2.0	1.0	6.0	44.6	426
42	2142	52.3	44.7	4.1	44.7	45.8	47.0	36	1 1/2	12	49.50	2.0	1.0	8.0	50.8	642
48	2148	58.8	51.0	4.1	51.0	52.1	53.3	44	1 1/2	12	56.00	2.0	1.0	8.0	57.1	797

Minimal Distance

\* The "P" dimensions is measured with torque-limiting nuts twisted off.

Nominal  
Pipe Size

Required To Install  
N

3	4.75
4	4.56
6	5.00
8	4.88
10	6.31
12	6.25
14	6.62
16	6.56
18	6.94
20	6.81
24	6.62
30	8.88
36	8.12
42	9.38
48	9.25

## MEGAFLANGE TESTING RESULTS

### PVC TESTING

- Quick Burst Test
- DR18 tested to 755 PSI
- DR14 tested to 985 PSI
- Long Term Pressure Test
- On DR18 PVC pipe at 615 PSI for 1000 hours without failure
- Cyclic Pressure Test
- DR18 tested from 94 to 188 PSI for over 1,000,000 cycles

### DUCTILE IRON AND STEEL TESTING

- Leakage Test (one minute required)
- Tested to twice rated pressure without leakage
- Hydrostatic Test (one minute required)
- 3 inch though 6 inch sizes tested to 5 times rated pressure
- 8 inch and 10 inch sizes tested to 4 times rated pressure
- 12 inch size tested to 3 times rated pressure
- Flexural Test
- Tested to withstand a bending moment based on requirements of NFPA 12-1991 "Standard for Installation of Sprinkler Systems"



APPROVED



Note: Dimensions are in inches and are subject to change without notice. All Dimensions are  $\pm 1\%$ .



Pipe Size	Ductile Iron Pipe	Steel Pipe*	C900/C905 PVC Pipe				IPS PVC Pipe*		
	Pressure (PSI)	Pressure (PSI)	DR14 Pressure (PSI)	DR18 Pressure (PSI)	DR25 Pressure (PSI)	DR32.5 Pressure (PSI)	SDR17 Pressure (PSI)	SDR21 Pressure (PSI)	SDR26 Pressure (PSI)
3	350	350	-	-	-	-	250	200	160
4	350	350	305	235	165	-	250	200	160
6	350	350	305	235	165	-	250	200	160
8	350	350	305	235	165	-	250	200	160
10	300	350	305	235	165	-	250	200	160
12	350	350	305	235	165	-	250	200	160
14	350	-	-	235	165	125	-	-	-
16	350	-	-	235	165	125	-	-	-
18	300	-	-	235	165	125	-	-	-
20	250	-	-	235	165	125	-	-	-
24	200	-	-	-	165	125	-	-	-
30	150	-	-	-	-	-	-	-	-
36	150	-	-	-	-	-	-	-	-
42	150	-	-	-	-	-	-	-	-
48	150	-	-	-	-	-	-	-	-

\*Transition Gasket Required  
NOTE: For Application on HDPE pipe see EBAA's HDPE Restraint Catalog Sheet.

## MEGAFLANGE Components

The Series 2100 MEGAFLANGE restrained flange adapter is comprised of two rings. The first is the restraint ring which incorporates wedges around the circumference of the ring to grip the pipe firmly and securely. The wedge style restraint offers enormous pullout strength when compared to set screw restraints. The resiliency of the wedge style restraint allows the MEGAFLANGE to withstand severe moment loads. The restraint ring and it's sub-components are protected from corrosion by the MEGA-BOND® Restraint Coating System. For more information regarding MEGA-BOND see our MEGA-BOND Brochure found at [www.ebaa.com](http://www.ebaa.com).

The second ring is the gasket ring which separates the seals dedicated to each sealing surface. This ring allows pipe to be cut to lengths in the field at a tolerance of 0.6 inch or more. In addition, the gasket ring also enables the joint to deflect during assembly. The gasket ring is coated with a NSF 61 approved Fusion Bonded Epoxy (FBE) so that it may be utilized on potable drinking water systems.

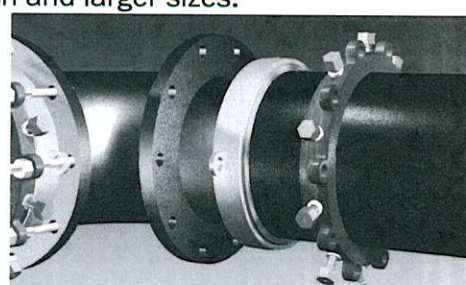
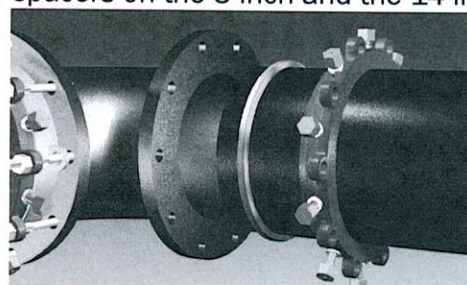
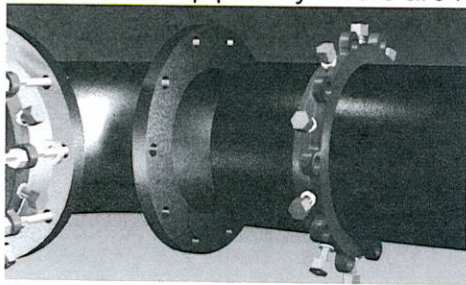
## DEFLECTION

Traditional flanged joint connections require a tremendous amount of torque on the bolts to achieve a good seal. The pipe layout must be precisely planned to avoid misalignment errors due to deviations in appurtenances of pipe fabrication.

The Series 2100 MEGAFLANGE is a speedy, on-site fabrication tool which is generous in its deflection limits, from 0.5° to 5° depending on pipe size. The deflection capabilities provided by the gasket ring allow offset of almost nineteen inches of an eighteen foot length of pip through the eight inch size.



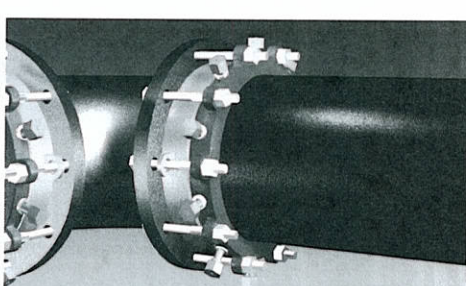
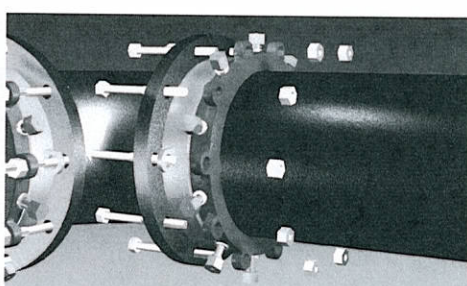
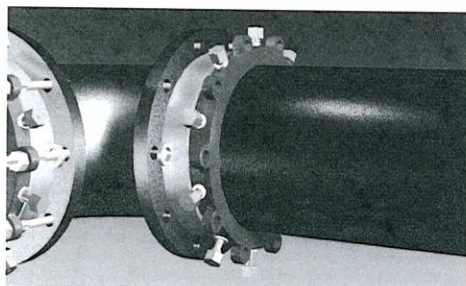
**1. Identify the pipe.** The MEGAFLANGE 2100 Flange Adapter, sizes 4 inch through 12 inch, is designed for use on ductile iron pipe, PVC (C900 & IPS O.D. (ASTM D2241)) pipe, and steel pipe. Check to see if the spacers under the screws are in place. If the pipe is ductile iron or C.I. O.D. PVC (C900) **DO NOT REMOVE THE SPACERS**. If the pipe is steel or IPS O.D. PVC, **REMOVE THE SPACERS** (sizes 4 inch through 12 inch). The 3 inch size is designed for use on ductile iron, IPS O.D. PVC pipe. Sizes 30 inch and larger are designed for ductile iron pipe only. There are no spacers on the 3 inch and the 14 inch and larger sizes.



**2.** Cut the pipe to the required length. Clean the end of the pipe for a length approximately one foot using a wire brush if needed, removing all excess paint and foreign material. Also clean the opposing flange to be connected to the 2100. Place the 2100 restraint ring on the clean pipe with the lip facing the plain end.

**3.** Lubricate and place the EBAA-Seal™ Gasket on the clean pipe following the restraint ring. **(USE A TRANSITION GASKET IN PLACE OF THE EBAA-SEAL GASKET FOR STEEL AND IPS. O.D. PVC PIPE.)**

**4.** Place the O-ring into the groove of the 2100 Gasket Ring. (This step may have been completed at the factory, check Gasket Ring to see if O-ring is already in place.) Place the Gasket Ring on the pipe with the O-ring facing the pipe end and the gasket recess facing the EBAA-Seal (or transition) Gasket and restraint ring.



**5.** Bring the pipe and flanges together within the maximum assembled deflection and maximum allowable gap "L" to the flange face. Slide the gasket ring, gasket and restraint ring until contact is made with the opposing flange.

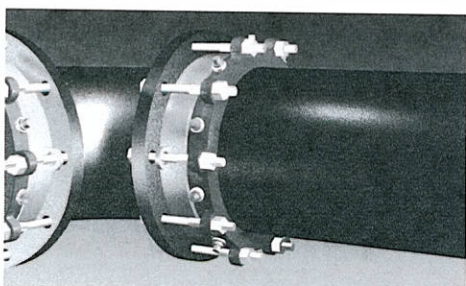
**6.** Insert and tighten all flange bolts. Torque all flange bolts an alternating manner to the value listed in Table 1.1. Be sure to make any necessary joint deflection before tightening the actuating screws. Joint deflection should not exceed the maximum allowable deflection. Be sure that deflection of the joint does not cause the end of the pipe to be separated from the opposing flange more than the maximum allowable gap "L".

**7.** Tighten the actuating screws in an alternating manner until all wedges touch the pipe. Continue tightening the nuts in an alternating pattern until all the torque-limiting nuts have been twisted off.

**Table 1.1**

**Flange Bolt Torques**

Nominal Pipe Size	Bolt Torque (ft.-lbs.)
3	45 - 60
4 - 6	75 - 90
8 - 24	90 - 110
30 - 48	110 - 130



**8.** If removal is necessary, utilize the  $\frac{5}{8}$  inch hex head provided. For reinstallation, repeat steps 2 through 7, torquing the actuating screws to 70 ft.-lbs or until the hex heads bottom out on the spacers or gland.

**EBAA IRON Sales, Inc.**

P.O. Box 857, Eastland, TX 76448

Tel: (254) 629-1731

Fax: (254) 629-8931

(800) 433-1716 within US and Canada

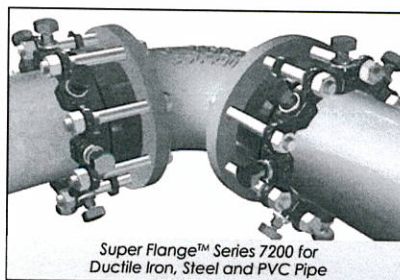
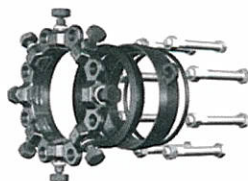
contact@ebaa.com

www.ebaa.com



**Super Flange™ series 7200**

Designed for use on Ductile Iron, Steel and PVC Pipes

Super Flange™ Series 7200 for  
Ductile Iron, Steel and PVC Pipe**SUBMITTAL INFORMATION****PROJECT NAME:****ENGINEER:****CONTRACTOR:****SPEC. SECTION:****FEATURES & ADVANTAGES**

- Versatile product designed for adapting ductile iron (3"-48"), PVC (3"-24") & steel (3"-12") pipe to flange connections.
- 350 psi maximum pressure rating on ductile iron pipe and rated to the maximum pressure rating of PVC pipe
- Joint deflection up to 5° maximum
- Allows for field flanged ends on plain end pipe
- Flange meets ANSI Class 125/150 and ANSI/AWWA C115/A21.15 drill pattern.
- Includes restraint gland, flange adapter ring, gaskets and hex head bolts/nuts
- Super Flange™ sizes 3"-12" are listed with Underwriters Laboratories Inc. and Underwriters Laboratories of Canada for ductile iron and steel pipe.
- Super Flange™ sizes 4" – 12" are approved by Factory Mutual Research for use on C900 PVC pipe DR18 Class 235 at 150 psi and sizes 4"-10" on DR14 Class 305 at 200 psi.

**MATERIAL SPECIFICATIONS:**

- Restraint Gland: Ductile Iron per ASTM A536, Grade 65-45-12
- Restraint Gland Finish: Starbond™ TGIC polyester powder coating applied by an electrostatic spray process
- Wedges: Ductile Iron per ASTM A536, Grade 65-45-12 heat treated to a minimum of 370 BHN
- Wedge Finish: Thermally cured fluoropolymer epoxy coating
- Flange adapter ring: coated with fusion bonded epoxy that meets ANSI/NSF 61
- MJ gasket and O-ring flange gasket are made from styrene butadiene rubber (SBR) per ANSI/AWWA C111/A-21.11.

**GASKET TYPE (Please check one):**

- ☒ Standard: MJ Gasket  
☐ Option: Transition Gasket (3" to 12" only)

**MJ GASKET MATERIAL OPTIONS (Please check one):**

- ☒ Standard: Styrene butadiene rubber (SBR) per ANSI/AWWA C111/A-21.11  
☐ Optional: EPDM  
☐ Optional: NITRILE  
☐ Other (specify) \_\_\_\_\_

**HARDWARE OPTIONS (Please check one):**

- ☐ Standard: hex head bolts and nuts are manufactured in accordance with ASTM A307, Grade B and ASTM A563 - bolts and nuts are also zinc plated.  
☐ Optional: hex head bolts and nuts alloy SS 304 per ASTM F593 and ASTM A194  
☐ Optional: hex head bolts and nuts alloy SS 316 per ASTM F593 and ASTM A194  
☒ Optional: hex head bolts and nuts Fluoropolymer Star-Blue coated

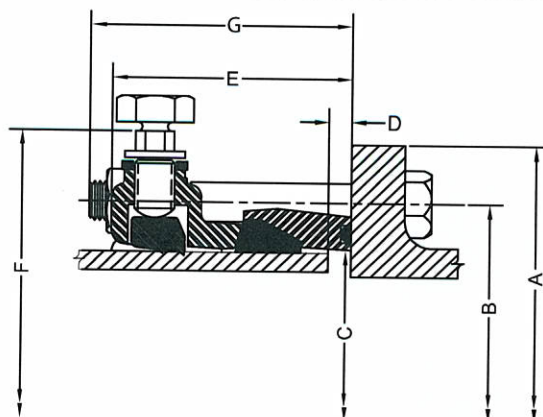




# Super Flange™ series 7200

Designed for use on Ductile Iron, Steel and PVC Pipes

## TECHNICAL INFORMATION



## SUPER FLANGE™ 7200 SPECIFICATIONS\*

*Please  
check size*

□ □ □ □ □ □ □ □ □ □ \* \*

NOM. SIZE	A	B	C	D MAX.	E	F	G	BOLTS		MAXIMUM JOINT DEFLECTION*	APPROX. WT. (LBS)
								SIZE	QTY.		
3	7.50	6.00	4.09	0.70	4.06	7.95	4.75	5/8 X 5 1/2	4	5.0°	13
4	9.00	7.50	4.93	0.60	4.18	9.22	4.56	5/8 X 5 1/2	8	5.0°	20
6	11.00	9.50	7.03	0.80	4.43	11.32	5.00	3/4 X 6	8	5.0°	29
8	13.50	11.75	9.18	0.90	4.60	13.29	4.88	3/4 X 6	8	5.0°	35
10	16.00	14.25	11.23	1.00	4.62	15.50	6.31	7/8 X 7 1/2	12	3.0°	60
12	19.00	17.00	13.33	1.00	4.75	17.50	6.25	7/8 X 7 1/2	12	3.0°	72
14	21.00	18.75	15.45	1.30	5.13	19.54	6.62	1 X 8	12	2.0°	89
16	23.50	21.25	17.55	1.30	5.18	21.64	6.56	1 X 8	16	2.0°	110
18	25.00	22.75	19.65	1.30	5.23	23.74	6.94	1 1/8 X 8 1/2	16	1.5°	140
20	27.50	25.00	21.75	1.30	5.24	25.84	6.81	1 1/8 X 8 1/2	20	1.5°	165
24	32.00	29.50	25.95	1.30	5.28	30.04	6.62	1 1/4 X 8 1/2	20	1.0°	198
30	38.75	36.00	32.18	2.00	6.00	36.58	7.88	1 1/4 X 10	28	1.0°	362
36	46.00	42.75	38.48	2.00	6.00	42.88	8.12	1 1/2 X 10 1/2	32	1.0°	541
42	53.00	49.50	44.68	2.00	8.00	50.80	9.38	1 1/2 X 12	36	1.0°	---
48	59.50	56.00	50.98	2.00	8.00	57.10	9.25	1 1/2 X 12	44	1.0°	---

\* All dimensions in inches except where indicated.

**\*\* Contact Star Pipe Products for price and availability.**

[illegible]

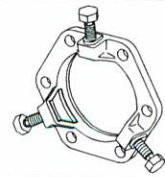
1 - All Pressure ratings are in PSI

2 - Transition Gasket required



# SUBMITTAL INFORMATION

## Uni-Flange Retainer (UFR1400-DA-x-RB-I style)



### WEDGE ACTION SERIES 1400-D RETAINER GLAND FOR DUCTILE IRON PIPE WITH BLUE FLUOROCARBON-COATED ACCESSORIES

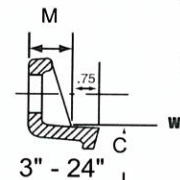
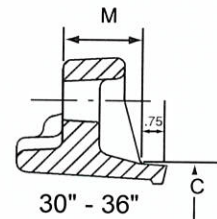
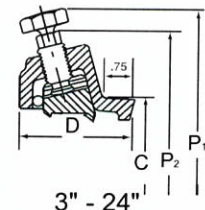
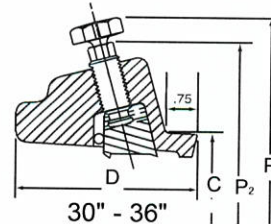
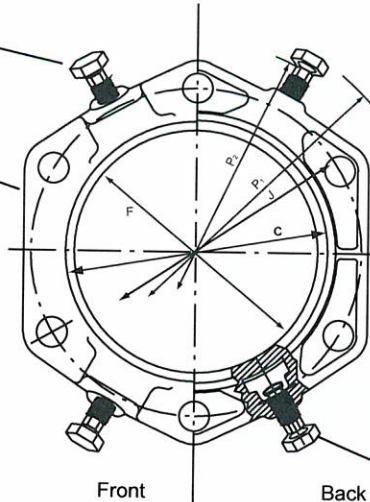
Ductile iron wedge actuating screw, with the Auto-Tork break-away head design, ensures proper torque during installation.

Gland body is of high strength ductile iron per ASTM A536, Grade 65-45-12. Compatible with all mechanical joints conforming to ANSI/AWWA C111/A21.11.

High strength low alloy T-bolts and nuts AWWA C111 blue fluorocarbon coated



Mechanical joint gasket AWWA C111



Wedges are ductile iron and heat treated to a hardness of 370 BHN minimum.



NOM. PIPE SIZE	O.D.	CATALOG NUMBER	PRESSURE RATING (PSI)	NO. OF WEDGES	APPROX. WEIGHT (LBS.)	P1*	P2**	C	D	F	M	J	✓ SUBMITTED ITEM(S)
3	3.96	UFR1400-DA-3-RB-I	350	2	8.6	11.04	9.06	4.84	2.65	4.06	0.68	6.19	
4	4.80	UFR1400-DA-4-RB-I	350	2	11.7	11.9	10.0	5.92	2.65	4.90	0.88	7.50	
6	6.90	UFR1400-DA-6-RB-I	350	3	17.6	14.0	12.1	8.02	2.65	7.00	0.88	9.50	
8	9.05	UFR1400-DA-8-RB-I	350	4	21.7	16.2	14.3	10.17	2.65	9.15	1.10	11.75	
10	11.10	UFR1400-DA-10-RB-I	350	6	31.9	18.2	16.3	12.22	2.75	11.20	1.10	14.00	
12	13.20	UFR1400-DA-12-RB-I	350	8	41.5	20.3	18.4	14.32	2.75	13.30	1.10	16.25	
14	15.30	UFR1400-DA-14-RB-I	350	10	57.0	22.9	20.9	16.40	3.00	15.50	1.50	18.75	
16	17.40	UFR1400-DA-16-RB-I	350	12	64.0	25.0	23.0	18.50	3.00	17.60	1.56	21.00	
18	19.50	UFR1400-DA-18-RB-I	250	12	81.0	28.1	25.8	20.60	3.05	19.70	1.65	23.25	
20	21.60	UFR1400-DA-20-RB-I	250	14	90.0	30.2	27.9	22.70	3.10	21.82	1.70	25.50	
24	25.80	UFR1400-DA-24-RB-I	250	16	107.0	34.4	32.1	26.90	3.20	26.04	1.85	30.00	
30	32.00	UFR1400-DA-30-RB-I	250	20	264.0	40.6	38.6	33.29	4.30	32.29	2.25	36.88	
36	38.30	UFR1400-DA-36-RB-I	250	24	318.0	46.9	44.9	39.59	4.50	38.62	2.25	43.75	

\* Maximum O.D. of gland on pipe before break-away heads have been removed (as received).

\*\* Maximum O.D. of gland on pipe after wedges have been activated and break-away heads have been removed.

### FEATURES

- Eliminates the need of costly and time consuming concrete thrust blocks and corrosion susceptible steel tie rods
- "Auto-Tork" wedge actuating screws assure proper installation
- Wedges are contoured to fit the pipe
- Set of high strength, low alloy T-Bolts and nuts (AWWA C111) with blue fluorocarbon coating
- Mechanical joint gasket (AWWA C111) 3"-24" sizes, Uni-Seal gasket 30" and 36" sizes
- Gland, screws and wedges are black e-coated
- Imported ductile iron castings
- Assembled, inspected and packaged in the U.S.A.
- FM Approved (4"-12") and UL Listed (4"- 48")

The Ford Meter Box Company considers the information in this submittal form to be correct at the time of publication. Item and option availability, including specifications, are subject to change without notice. Please verify that your product information is current.



**The Ford Meter Box Company, Inc.**  
P.O. Box 443, Wabash, Indiana U.S.A. 46992-0443  
Phone: 260-563-3171 / Fax: 800-826-3487  
Overseas Fax: 260-563-0167  
www.fordmeterbox.com

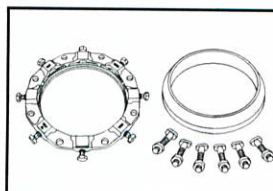
01/30/15

Submitted By:



# SUBMITTAL INFORMATION

## Mechanical Joint Retainer (UFR1500-CA-x-RB-I style)



### 4" - 12" SERIES UFR1500 CIRCLE LOCK MECHANICAL JOINT RESTRAINT FOR C900 OR C909 PVC PACKAGED FLUOROCARBON-COATED WITH ACCESSORIES

Ductile iron actuating screw, with the Auto-Tork break-away head design, insures proper torque during installation.

Safety stop insures ring segments can never be over-tightened.

Mechanical joint gasket

Auto-Tork Bolt

Restraint Segment

Bolt Hole Cross Section

Gland body is of High Strength Ductile Iron per ASTM A536, Grade 65-45-12. ==Compatible with all mechanical joints conforming to ANSI / AWWA C111 / A21.11.

Ring Segments are ductile iron per ASTM A536 and heat treated to a hardness of 370 BHN minimum

High strength, low alloy T-bolts & nuts (AWWA C111) blue fluorocarbon-coated

NOM PIPE SIZE	PIPE O.D.	CATALOG NUMBER	NO. OF SEGMENTS	APPROX. WEIGHT (LBS)	P1*	P2**	BC	D	PRESSURE RATING				✓SUBMITTED ITEM(S)
						C900 C909			C900			C909	
									DR-14	DR-18	DR-25	PC-235	
4"	4.80	UFR1500-CA-4-RB-I	4	11.00	13.00"	9.40"	7.50"	4.90"	305	235	165		
6"	6.90	UFR1500-CA-6-RB-I	6	15.00	15.13"	11.60"	9.50"	7.00"	305	235	165	235	
8"	9.05	UFR1500-CA-8-RB-I	6	18.00	17.25"	13.75"	11.75"	9.15"	305	235	165	235	
10"	11.10	UFR1500-CA-10-RB-I	8	26.00	19.38"	16.00"	14.00"	11.20"	305	235	165	235	
12"	13.20	UFR1500-CA-12-RB-I	8	29.00	21.50"	18.05"	16.25"	13.30"	305	235	165	235	

\*Maximum O.D. of gland on pipe before Auto-Tork heads are removed (as shipped).

\*\*Maximum O.D. of gland on pipe after Auto-Tork heads are removed.

### FEATURES

- Full circle contact and support of the pipe wall.
- "Auto-Tork" actuating screws with heads specially designed to twist off at the correct installation torque, leaving a hex head in case future system maintenance or removal is required
- Set of high strength, low alloy T-Bolts and nuts with blue fluorocarbon-coating (AWWA C111)
- Mechanical joint gasket (AWWA C111)
- Series 1500 eliminates the need to pour expensive and time consuming concrete thrust blocks
- Restraining segments are mechanically retained in pockets
- Imported ductile iron castings
- Gland, screws and segments are black epoxy coated using the e-coat process
- Gland colored red for identification purposes
- Assembled, inspected and packaged in the U.S.A.

The Ford Meter Box Company considers the information in this submittal form to be correct at the time of publication. Item and option availability, including specifications, are subject to change without notice. Please verify that your product information is current.



**The Ford Meter Box Company, Inc.**

P.O. Box 443, Wabash, Indiana U.S.A. 46992-0443

Phone: 260-563-3171 / Fax: 800-826-3487

Overseas Fax: 260-563-0167

<http://www.fordmeterbox.com>



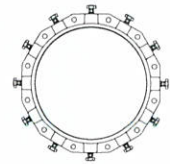
Submitted By:

02/06/14

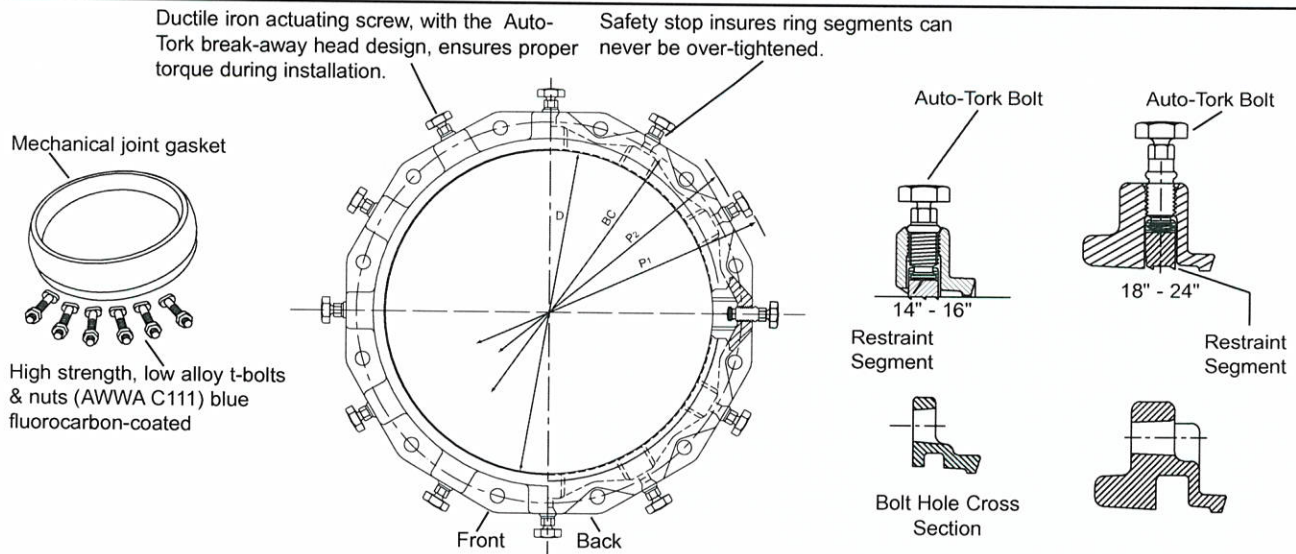


# SUBMITTAL INFORMATION

## Mechanical Joint Retainer (UFR1500-CA-xx-RB-I style)



### 14" - 24" SERIES UFR1500-C CIRCLE LOCK MECHANICAL JOINT RESTRAINT FOR C905 PVC PIPE WITH BLUE FLUOROCARBON-COATED ACCESSORIES



Gland body is of high strength ductile iron per ASTM A536, grade 65-45-12. Compatible with all mechanical joints conforming to ANSI / AWWA C111 / A21.11.

Ring segments are ductile iron per ASTM A536 and heat treated to a hardness of 370 BHN minimum.

NOM. PIPE SIZE	O.D.	CATALOG NUMBER AWWA C-905 PVC PIPE	NO. OF RESTRAINT SEGMENTS	APPROX. WEIGHT (LBS.)	P1*	P2**	BC	D	PRESSURE RATING C-905 DR-18	PRESSURE RATING AWWA C-905 DR-25	✓ SUBMITTED ITEM(S)
14"	15.30	UFR1500-CA-14-RB-I	10	47	23.62	22.72	18.75	15.44	235 PSI	165 PSI	
16"	17.40	UFR1500-CA-16-RB-I	12	63	26.18	25.28	21.0	17.54	235 PSI	165 PSI	
18"	19.50	UFR1500-CA-18-RB-I	12	70	28.28	27.38	23.25	19.64	235 PSI	165 PSI	
20"	21.60	UFR1500-CA-20-RB-I	14	96	30.38	29.48	25.5	21.74	235 PSI	165 PSI	
24"	25.80	UFR1500-CA-24-RB-I	16	126	34.58	33.68	30.0	25.94	235 PSI	165 PSI	

\*Maximum O.D. of gland on pipe before Auto-Tork heads are removed (as shipped).

\*\*Maximum O.D. of gland on pipe after Auto-Tork heads are removed.

#### FEATURES

- Full circle contact and support of the pipe wall. The Series 1500 can be used on any thickness class of AWWA C-905 PVC pipe without any point loading.
- "Auto-Tork" actuating screws with heads specially designed to twist off at the correct installation torque, leaving a hex head in case future system maintenance or removal is required.
- Set of high strength, low alloy t-bolt and nuts (AWWA C111) with blue fluorocarbon coating
- Mechanical joint gasket (AWWA C111) 14"-24" sizes
- Series 1500 eliminates the need to pour expensive and time consuming concrete thrust blocks
- Imported ductile iron castings
- Restraining segments are mechanically retained in pockets
- Gland, screws and segments are black epoxy coated using the e-coat process
- Gland colored red for identification purposes
- Assembled, inspected and packaged in the U.S.A.

The Ford Meter Box Company considers the information in this submittal form to be correct at the time of publication. Item and option availability, including specifications, are subject to change without notice. Please verify that your product information is current.



**The Ford Meter Box Company, Inc.**

P.O. Box 443, Wabash, Indiana U.S.A. 46992-0443  
Phone: 260-563-3171 / Fax: 800-826-3487  
Overseas Fax: 260-563-0167  
www.fordmeterbox.com



Submitted By:

02/12/16



**Standard Mechanical Joint Gaskets**

(SBR, NBR, EPDM, Neoprene, FKM)

ANSI/AWWA C111/A21.11

**GASKET GENERAL SPECIFICATIONS**

Star Pipe Products Mechanical Joint (MJ) Gasket dimensions conform to the drawings set forth in ANSI/AWWA C111/A21.11. Gasket markings include size, Manufacturer's mark, Country of origin and product identification. No markings are positioned on sealing surfaces per the ANSI/AWWA C111/A21.11 standard. MJ transition gaskets follow the requirements of ANSI/AWWA C111/A21.11 where applicable.

Standard gasket material is vulcanized styrene butadiene rubber (SBR). Special application elastomers (EPDM, Nitrile, Neoprene & FKM) are available and shall be identified on all documentation and corresponding gaskets.

Star Pipe gaskets are manufactured under quality control standards and procedures that are maintained by the gasket supplier. Appropriate documentation is maintained by the manufacturer and available for review upon request.

Star Pipe gasket suppliers maintain a quality assurance program and manual that is reviewed and updated on an ongoing basis to ensure product quality. Star Pipe gasket suppliers perform in house testing and submit to random testing by Underwriters Laboratories, Inc. Star Pipe gasket providers are recognized under the component program (UL 194/ UL 157) of Underwriters Laboratories, Inc.

Star Pipe provides that our Mechanical Joint gaskets for potable or wastewater projects will perform as designed, based on the published chemical and environmental resistance data for "generic" rubber compounds. Star Pipe should be consulted for specific recommendations or for unusual applications.

**GASKET PROPERTIES**

PROPERTY	ASTM TEST METHOD	REQUIRED VALUE
Hardness, Shore "A"	D2240	75 ± 5
Minimum Tensile	D412	1500 psi
Minimum Elongation	D412	150%
Minimum Aging	D573	60%
Maximum Compression Set	D395, Method B	20%
Resistance to Surface Ozone Cracking	D1149	No Cracking

GASKET TYPE	MAXIMUM CONTINUOUS TEMP	MAXIMUM EXPOSURE TEMP	STANDARD USAGE
<b>SBR</b> (Styrene Butadiene Rubber/ Buna-S)	160 F	180 F	Drinking water, Salt Water, Sanitary Sewage, Reclaimed Water, Raw Water, Storm Water. Not Recommended for Hydrocarbon Service
<b>EPDM</b> (Ethylene Propylene)	250 F	300 F	Alcohols, Dilute Acids, Dilute Alkalis, Ketones (MEK/Acetone), Strong Oxidizing Chemicals; Drinking Water, Salt Water, Sanitary Sewage, Reclaimed Water, Raw Water, Storm Water. Not Recommended for Hydrocarbon Service
<b>Neoprene</b> (Polychloroprene / CR)	225 F	300 F	Hydrocarbons, Unrefined Petroleum Products, Greasy Waste; Salt Water, Sanitary Sewage, Reclaimed Water, Raw Water, Storm Water.
<b>Nitrile</b> (NBR / Buna-N)	160 F	180 F	Refined Oils and Fluids, Fats, Greases and Waste; Drinking Water, Sanitary Sewage, Reclaimed Water, Raw Water, Storm Water.
<b>FKM</b> (Fluoroelastomer / Viton®)	400 F	500 F	Aromatic Hydrocarbons, Chlorinated Hydrocarbons, Vegetable Oils, Most Chemicals; Drinking Water, Reclaimed Water, Raw Water, Storm Water.

Viton® is a registered trademark of E.I. Du Pont De Nemours & Company.

UCAT 15.01  
\* REGISTERED TRADEMARK OF STAR PIPE PRODUCTS

STAR PIPE PRODUCTS  
HOUSTON CORPORATE | TOLL FREE 1-800-999-3009 | FAX 281-558-9000  
www.starpipeproducts.com

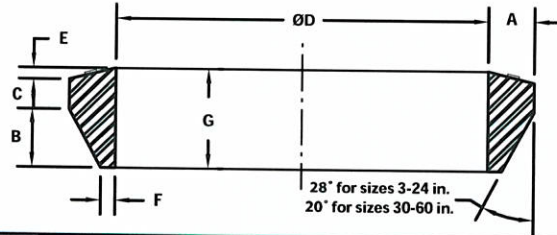
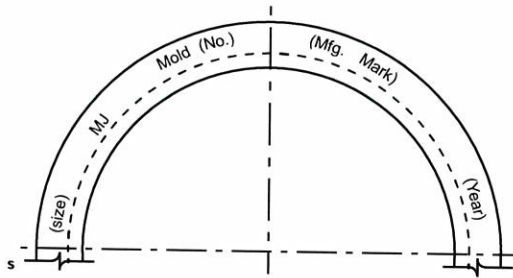






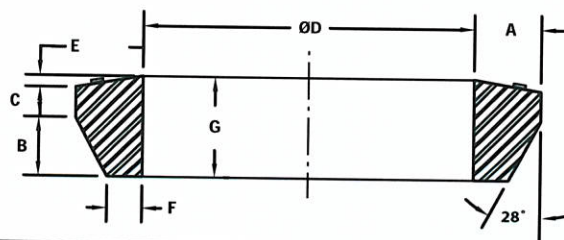
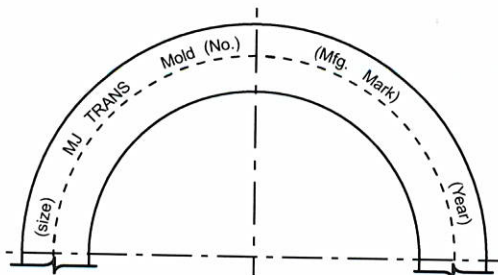
# MJ Accessories

ANSI/AWWA C111/A21.11



MECHANICAL-JOINT GASKET

NOM. SIZE	PIPE O.D.	A	B	C	ØD ±1 %	E	F	G
2	2.50	0.48	0.62	0.31	2.48	0.12	0.15	1.05
3	3.96	0.48	0.62	0.31	3.86	0.12	0.15	1.05
4	4.80	0.62	0.75	0.31	4.68	0.16	0.22	1.22
6	6.90	0.62	0.75	0.31	6.73	0.16	0.22	1.22
8	9.05	0.62	0.75	0.31	8.85	0.16	0.22	1.22
10	11.10	0.62	0.75	0.31	10.87	0.16	0.22	1.22
12	13.20	0.62	0.75	0.31	12.95	0.16	0.22	1.22
14	15.30	0.62	0.75	0.31	14.99	0.16	0.22	1.22
16	17.40	0.62	0.75	0.31	17.07	0.16	0.22	1.22
18	19.50	0.62	0.75	0.31	19.13	0.16	0.22	1.22
20	21.60	0.62	0.75	0.31	21.20	0.16	0.22	1.22
24	25.80	0.62	0.75	0.31	25.34	0.16	0.22	1.22
30	32.00	0.73	1.00	0.38	31.47	0.16	0.37	1.54
36	38.30	0.73	1.00	0.38	37.67	0.16	0.37	1.54
42	44.50	0.73	1.00	0.38	43.78	0.16	0.37	1.54
48	50.80	0.73	1.00	0.38	49.98	0.16	0.37	1.54



TRANSITION MECHANICAL-JOINT GASKET

NOM. SIZE	PIPE O.D.	A	B	C (REF.)	ØD ±1 %	E	F	G
2	2.375	0.56	0.66	0.31	2.32	0.12	0.21	1.10
3	3.500	0.72	0.64	0.34	3.43	0.12	0.38	1.10
4	4.500	0.76	0.73	0.33	4.43	0.20	0.37	1.26
6	6.625	0.75	0.73	0.32	6.53	0.20	0.36	1.25
8	8.625	0.82	0.73	0.34	8.50	0.20	0.43	1.27
10	10.750	0.79	0.75	0.31	10.59	0.20	0.39	1.26
12	12.750	0.84	0.75	0.33	12.56	0.20	0.44	1.28





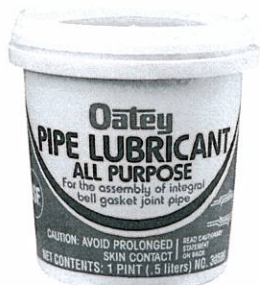
4700 W. 160th St.  
Cleveland, OH 44135  
PH:800-321-9532  
FX:800-321-9535  
www.oatey.com

#### TECHNICAL SPECIFICATION

## ALL PURPOSE PIPE LUBRICANT



**TECHNICAL SPECIFICATION:** Oatey All Purpose Pipe Lubricant is used for assembling pipelines including cast iron, concrete, plastic and clay pipe. Pipe Lubricant is a mixed fatty acid soap dispersed in glycols and water solvents with a clay pigment filler. Pipe Lubricant can be applied from -10° F to 150° F. It will not deteriorate natural or synthetic rubber, plastic gaskets or cast iron pipe. Pipe Lubricant contains no petroleum oils or phosphates and will not support bacterial growth.



#### COMMON APPLICATIONS

Oatey All Purpose Pipe Lubricant is used for assembling gasketed pipelines including cast iron, concrete, plastic and clay pipe.

Consult Oatey Technical Department for applications not specifically referenced above.

#### INGREDIENTS

Blend of soap and non-toxic ingredients.

#### APPROVALS AND LISTINGS



NSF Listed to  
Standard 61

#### PHYSICAL/CHEMICAL PROPERTIES

Bulk Density	~ 9.3 lb/gal
Appearance	Soft Amber Paste
Shelf Life	1 year from manufacture date
Free Fatty Acid	1-3%
Total Alkalinity	100 mg KOH/g equivalent
pH	~ 9.5

#### DIRECTIONS FOR USE

All Purpose Pipe Lubricant is ready to use from the container. Do not dilute, thin or otherwise alter the product's consistency. Follow guidelines for lubrication and assembly provided by pipe, fitting and gasket manufacturers. Clean both the inside of the bell and the outside of the spigot. Completely lubricate the inside surface of the bell and the gasket. The lubricant can be brushed on, swabbed on, or wiped on by hand with a cloth glove. Be sure to get full lubricant coverage. Don't leave any dry areas. Do not apply lubricant into the ring groove.

#### PRECAUTIONS

Read all cautions and directions carefully before using this product. Avoid contact with eyes. Prolonged contact with skin could cause irritation. Wash with soap and water. If irritation persists, contact physician. Keep container closed when not in use. DO NOT REUSE EMPTY CONTAINER. KEEP OUT OF REACH OF CHILDREN.

Refer to material safety data sheet for more information.  
For emergency first aid help, call 1-303-623-5716 COLLECT.

PRODUCT NUMBER	DESCRIPTION	PACK	CARTON WEIGHT
30599	16 oz. Pipe Lubricant	24	30 lbs.
30600	32 oz. Pipe Lubricant	12	25 lbs.
30601	Gallon Pipe Lubricant	4	34 lbs.
30605	5 Gallon Pipe Lubricant	1	42 lbs.





## MACRO HP™ Two-Bolt Wide Range Ductile Iron Coupling

### MACRO HP™ TWO-BOLT EXTENDED RANGE COUPLING

- **New Sizes - Macro HP is now available for pipe sizes 2" through 12"**
- High Performance One-Piece Gasket
- Up To 25% Higher Working Pressure (up to 305 PSI)
- Up To 25% More Deflection (up to 10°)
- Stainless Steel Armors Are Bonded To Gaskets
- Patent Number: 8448993



Meets AWWA C219

**A ROMAC ORIGINAL  
2009 - MACRO™**

## MACRO HP ADVANTAGES

- **DUCTILE IRON**  
Long-life ductile iron end-rings and center-ring.
- **WIDE RANGE**  
Macro HP fits a wide variety of pipe materials and diameters.
- **SIMPLE INSTALLATION**  
Macro HP is a fast stab-fit installation with only two bolts to tighten. The built-in handle makes the Macro HP simple to carry and maneuver.
- **EASY TO REMOVE**  
In the event that the coupling needs to be removed, Macro HP can be quickly removed simply by loosening two bolts.
- **CATHODIC PROTECTION**  
The Macro HP can be ordered with an adapter/connection for cathodic protection if desired.
- **ALLOWS DEFLECTION**  
When properly installed the Macro HP can accommodate pipe deflection of up to 10 degrees (5 degrees on each end).
- **MANUFACTURED IN THE U.S.A.  
BY ROMAC INDUSTRIES, INC.**  
Patent Number: 8448993

### Material Specifications

**Castings:** All cast components (end rings, center ring, and bolt guides) are ductile iron, meeting or exceeding the requirements of ASTM A 536, grade 65-45-12. End rings are segmented and joined with a hinge.

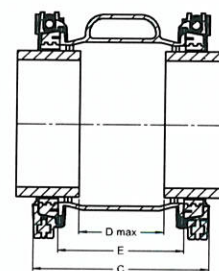
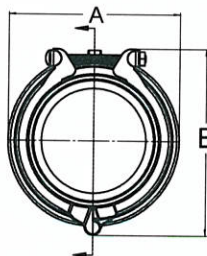
**Gaskets:** Gaskets formed from virgin Nitrile Butadiene Rubber (NBR) compounded for water and sewer service in accordance with ASTM D2000. Other compounds available on request.

**Bolts & Nuts:** 304 stainless steel, UNC carriage head bolts with heavy hex nuts. Sizes 2" & 3": 1/2-13. Sizes 4" - 12": 5/8-11. 316 stainless steel available upon request. Fasteners provided with anti-galling protection.

**Armor:** Heavy gauge 304 stainless steel bonded to gaskets.

**Coatings:** Center ring fusion bonded epoxy. End rings are E-Coated epoxy.

**Pressure:** When properly installed, the Romac MACRO HP coupling can be used at working pressures up to 305 psi. Contact Romac Engineering for details.



See following page for dimensions.



Flexible couplings do not provide protection against possible pullout of pipe ends in unrestrained conditions.





# MACRO HP™

## Two-Bolt Wide Range Ductile Iron Coupling



**NEW SIZES**  
for applications on  
2" and 3" pipe

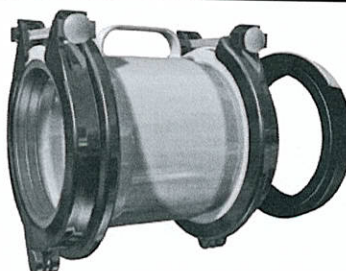
The 2 and 3 inch Macro HP Couplings are designed to fit most common pipe materials.

For other ranges and gasket configurations not shown in the table below, contact Romac Industries, Inc.

NOMINAL PIPE SIZE	COUPLING RANGE	DIMENSIONS					LIST PRICE	APPROX. WT. (LBS.)
		DIM. A (WIDTH)	DIM. B (HEIGHT)	DIM. C (LENGTH)	DIM. D (GAP BETWEEN PIPE ENDS)	DIM. E (CENTER RING LENGTH)		
2"	2.12 - 2.55	5.80	6.75	6.38	2.00	4.00	\$183.10	9
2" XL	2.50 - 2.90							
3"	3.13 - 3.63	7.20	8.36	8.38	4.00	6.00	240.25	12
3" XL	3.63 - 4.13							

### WIDE RANGE GASKETS

MACRO HP Sizes 4 - 12 inch, are preassembled with standard wide range gaskets that accommodate IPS through cast iron pipe. XL sizes cover DI through Oversize Cast Iron pipe diameters.



### A/C GASKET INCLUDED

For larger pipe diameters such as some asbestos cement, a separate A/C gasket is included.

NOM. PIPE SIZE	OVERALL COUPLING RANGE		DIMENSIONS					LIST PRICE	APPROX. WT. (LBS.)
	FACTORY PREASSEMBLED	INCLUDED, REQUIRES GASKET CHANGE	DIM. A (WIDTH)	DIM. B (HEIGHT)	DIM. C (LENGTH)	DIM. D (GAP BETWEEN PIPE ENDS)	DIM. E (CENTER RING LENGTH)		
4"	4.40 - 5.60 WIDE RANGE GASKET 4.40 - 5.05	4.95 - 5.60 A/C GASKET RANGE 4.95 - 5.60	8.96	10.18	11.19	6.00	8.00	\$309.35	28
6"	6.60 - 7.60 WIDE RANGE GASKET 6.60 - 7.15	7.10 - 7.60 A/C GASKET RANGE 7.10 - 7.60	10.96	12.18	11.19	6.00	8.00	408.25	34
8"	8.60 - 9.75 WIDE RANGE GASKET 8.60 - 9.30	9.10 - 9.75 A/C GASKET RANGE 9.10 - 9.75	13.11	14.33	11.19	6.00	8.00	462.30	36
10"	10.70 - 11.90 WIDE RANGE GASKET 10.70 - 11.30	11.25 - 11.90 A/C GASKET RANGE 11.25 - 11.90	15.26	16.48	11.19	6.00	8.00	598.00	57
10" XL	11.00 - 12.20 WIDE RANGE GASKET 11.00 - 11.65	11.55 - 12.20 A/C GASKET RANGE 11.55 - 12.20	15.56	16.78	11.19	6.00	8.00	639.40	59
12"	12.70 - 13.80 WIDE RANGE GASKET 12.70 - 13.30	13.15 - 13.80 A/C GASKET RANGE 13.15 - 13.80	17.16	18.38	11.19	6.00	8.00	703.80	62
12" XL	13.15 - 14.40 WIDE RANGE GASKET 13.15 - 13.80	13.75 - 14.40 A/C GASKET RANGE 13.75 - 14.40	17.76	18.98	11.19	6.00	8.00	841.80	64

**To Order MACRO HP Coupling:** Determine the O.D. of the pipes to be coupled, and select coupling size which covers the pipe diameters of both pipe ends. Use the high range [shaded number in table above] of the overall coupling range to identify which coupling you're ordering.

**Example:** To couple 8" DI and 8" std. steel, order **MACRO HP 9.75**.