

DATE: 10/30/2015

INVITATION TO BID
THIS IS NOT AN ORDER

Page: 4

BID NO.: 50-00114908

JEFFERSON PARISHPURCHASING DEPARTMENT
P.O. BOX 9
GRETNA, LA. 70054-0009
504-364-2678

VENDOR: 27118 BLANK BID COPY VENDOR

BUYER: CGasper

As per LSA-RS 47:301 et seq., all governmental bodies are excluded from payment of sales taxes to any Louisiana taxing body. Quotations shall be based on F.O.B. Agency warehouse or jobsite, anywhere within the Parish as designated by the Purchasing Department.

JEFFERSON PARISH reserves the right to cancel all or any part of an order if not shipped promptly. No charges will be allowed for parking or cartage unless specified in quotation. The order must not be filled at a higher price than quoted. JEFFERSON PARISH reserves the right to cancel at any time and for any reason by issuing a THIRTY (30) day written notice to the contractor.

JEFFERSON PARISH is expecting all products to be new and all work is to be done in a workman-like manner, according to standard practices. Any deviations or alterations from the specifications must be indicated and backup documentation supplied with your quotation.

DELIVERY: FOB JEFFERSON PARISH

INDICATE DELIVERY DATE ON EQUIPMENT AND SUPPLIES

3-4 DAYS

INDICATE STARTING TIME (IN DAYS) FOR CONSTRUCTION WORK

INDICATE COMPLETION TIME (IN DAYS) FOR CONSTRUCTION WORK

In the event that addenda are issued with this bid, bidders MUST acknowledge all addenda on the bid form. Bidder must acknowledge receipt of an addendum on the bid form as indicated. Failure to acknowledge any addendum on the bid form will result in bid rejection.

Acknowledge Receipt of Addenda: NUMBER: _____

NUMBER: _____

NUMBER: _____

NUMBER: _____

LOUISIANA CONTRACTOR'S LICENSE NO.: (if applicable) _____

***** ALL BIDDERS MUST COMPLETE SECTION BELOW *****

FIRM NAME: <u>Cmsco</u>	
SIGNATURE: (Must be signed here) <u>Jeff Devillier</u>	TITLE: <u>SALES</u>
PRINT OR TYPE NAME: <u>JEFF DEVILLIER</u>	
ADDRESS: <u>1840 LTA RD</u>	
CITY, STATE: <u>METairie, LA</u>	ZIP: <u>70001</u>
TELEPHONE: <u>(504) 835-7319</u>	FAX: <u>(504) 832-0820</u>
EMAIL ADDRESS: <u>JEFF@CmscoINC.com</u>	

TOTAL PRICE OF ALL BID ITEMS: \$ 2146.00

DATE: 10/30/2015

Page: 5

INVITATION TO BID FROM JEFFERSON PARISH - continued

BID NO.: 50-00114908

SEALED BID

ITEM NUMBER	QUANTITY	U/M	DESCRIPTION OF ARTICLES	UNIT PRICE QUOTED	TOTALS
			INFLATABLE PLUGS		
1	2.00	EA	0010 4 INCH - 8 INCH INFLATABLE PLUGS, TYPE B (1/2 INCH FLOW-THROUGH), 45 PSI MAX. INFLATION PRESSURE, 3.5 IN. DIAMETER, 18.5 IN LONG. WEIGHING 6 LBS. MADE OF SBR RUBBER WITH HEAT TREATED ALUMINUM COUNTER RINGS AND CAST ALUMINUM END PLATES. MUST HAVE HANDLING AND ANCHORING DEVICES AT BOTH ENDS. LOGIBALL SECURIMAX MODEL B: 2" FLOW- THRU HOSE.	373 ⁰⁰	746 ⁰⁰
2	2.00	EA	0020 5 INCH - 10 INCH INFLATABLE PLUGS, TYPE A, (NO-FLOW-THROUGH), 45PSI MAX. INFLATION PRESSURE, 4.8 IN DIAMETER, 26 INCH LONG, WEIGHING 15 LBS., MADE OF SBR RUBBER WITH HEAT TREATED ALUMINUM COUNTER RINGS AND CAST ALUMINUM END PLATES. MUST HAVE HANDLING AND ANCHORING DEVICES AT BOTH ENDS. LOGIBALL SECURIMAX MODEL A: NO FLOW- THRU.	363 ⁰⁰	726 ⁰⁰
3	2.00	EA	0030 7 INCH - 12 INCH INFLATABLE PLUGS, TYPE A (NO-FLOW-THROUGH), 35PSI MAX. INFLATION PRESSURE 6.6 IN. DIAMETER 28.5 IN LONG, WEIGHING 28.5 LBS., MADE OF SBR RUBBER WITH HEAT TREATED ALUMINUM COUNTER RINGS AND CAST ALUMINUM END PLATES. MUST HAVE HANDLING AND ANCHORING DEVICES AT BOTH ENDS. LOGIBALL SECURIMAX MODEL A: NO FLOW- THRU.	337 ⁰⁰	674 ⁰⁰
4	1.00	EA	0040 FREIGHT	Ø	Ø



Pneumatic Plugs



Pneumatic Plugs

Test-Ball®

Muni-Ball®

Pressure Charts

Rupture Disc

Protective Sleeves

Remo®

Big-Mouth®

Flow-Through

Factory-Replaceable

Sleeve Muni-Ball®

Jet-Ball®

Air-Loc® Leak Locator

Long Test-Ball®

MS2 Test-Ball®

Clean-Seal®

Pillow Plugs

Mechanical Plugs
Deflection Gauges
Testing Equipment
Tools&Accessories
Technical Data
Contact Us
Search



Muni-Ball®

Cherne Muni-Ball®

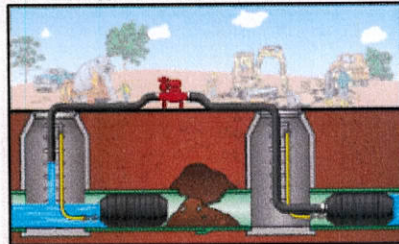
The Muni-Ball® Plug was introduced over 50 years ago and the Cherne brand continues to be the most trusted name in pneumatic plugs.

The Muni-Ball Plug offers a full bypass allowing both testing and monitoring of the piping system. The Cherne Muni-Ball® is ideal for installation and repair of residential or commercial piping applications. Cherne Muni-Ball® products can be used for maintenance of municipal infrastructure, including sanitary and storm sewer pipe systems. Muni-Ball® plugs are durable, rugged and are effective on almost any type of pipe.

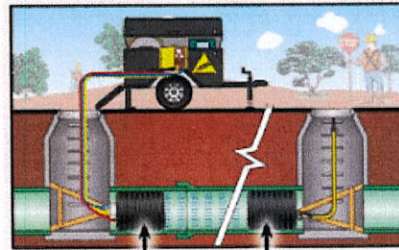
- Muni-Ball® Plugs are designed with 1/4" Shrader Tire inflation valve
- Larger diameter Muni-Ball® Plugs include a removable threaded valve, allowing the user to replace with quick disconnect fittings
- Muni-Balls with flexible bypass are bendable to 90°
- Multi-Size® Muni-Ball® Plugs allow more options and less inventory



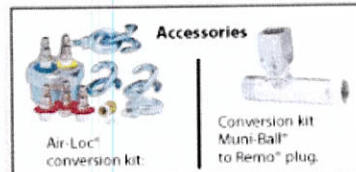
Muni-Ball® Applications Bypass Pumping



Sewer Air Test



Front or back plug



Part Number	Nominal Size	Bypass Diameter	Range of Use	Maximum Back Pressure	Inflation Pressure	Product Weight	Deflated Length	Deflated Diameter	Inflation Thread	Chain / Eye bolts
262008	1.5" (40 mm)	1/8" MNP	1.49"-1.88" (38-48 mm)	22 psi (1.5 bar)	50 ft (15 M)	40 psi (2.8 bar)	0.3 lbs (0.2 kg)	3.75" (97 mm)	1.4" (36 mm)	Molded in Valve Removable Chain
262010	2" (50 mm)	1/8" FNP	1.88"-2.25" (48-57 mm)	22 psi (1.5 bar)	50 ft (15 M)	40 psi (2.8 bar)	0.4 lbs (0.3 kg)	6" (152 mm)	1.75" (44 mm)	Molded in Valve Removable Chain
262021	3" (75 mm)	3/4" FNP	2.62"-3.25" (67-83 mm)	22 psi (1.5 bar)	50 ft (15 M)	40 psi (2.8 bar)	1.25 lbs (0.5 kg)	8" (203 mm)	2.5" (64 mm)	Molded in Valve Removable Chain

Line #1

262048	4" (100 mm)	3/4" FNP	3.25"-4.25" (83-108 mm)	22 psi (1.5 bar)	50 ft (15 M)	40 psi (2.8 bar)	1.5 lbs (0.7 kg)	8" (203 mm)	3.25" (80 mm)	Molded in Valve	1/4" (1)
265048	4" - 6" (100-150 mm)	3/4" FNP	3.75"-6.25" (100-150 mm)	17 psi (1.2 bar)	40 ft (12 M)	35 psi (2.4 bar)	2.5 lbs (1.1 kg)	10.75" (273 mm)	3.5" (88 mm)	1/8"	1/4" (1)
355088	4" - 8" (100-200 mm)	3/4" FNP	3.75"-8.25" (100-200 mm)	13 psi (0.9 bar)	30 ft (9.1 M)	30 psi (2.1 bar)	6 lbs (2.7 kg)	22" (559 mm)	3.75" (93 mm)	1/4"	1/4" (1)
262064	6" (150 mm)	1 1/2" FNP	4.50"-6.25" (144-159 mm)	13 psi (0.9 bar)	30 ft (9.1 M)	35 psi (2.4 bar)	2 lbs (1 kg)	7" (178 mm)	4.5" (112 mm)	1/8"	1/4" (1)
265068	6" - 8" (150-200 mm)	1 1/2" FNP	5.50"-8.25" (133-212 mm)	17 psi (1.2 bar)	40 ft (12 M)	35 psi (2.4 bar)	6 lbs (2.7 kg)	13" (330 mm)	5" (125 mm)	1/4"	3/8" (1)
355128	6" - 12" (150-300 mm)	1" FNP	5.50"-12.25" (150-300 mm)	13 psi (0.9 bar)	30 ft (9.1 M)	30 psi (2.1 bar)	8.5 lbs (3.9 kg)	26.25" (667 mm)	5.25" (133 mm)	1/4"	3/8" (1)
262080	8" (200 mm)	3" FNP	7.00"-8.25" (178-210 mm)	13 psi (0.9 bar)	30 ft (9.1 M)	35 psi (2.4 bar)	5 lbs (2.3 kg)	10" (254 mm)	6.75" (170 mm)	1/4"	1/4" (1)
265078	8" - 10" (200-250 mm)	2" FNP	7.00"-10.25" (200-250 mm)	17 psi (1.2 bar)	40 ft (12 M)	30 psi (2.1 bar)	9 lbs (3 kg)	14.5" (368 mm)	6.75" (171 mm)	1/4"	3/8" (1)
265098	8" - 12" (200-300 mm)	2" FNP	7.00"-12.25" (200-300 mm)	17 psi (1.2 bar)	40 ft (12 M)	25 psi (1.7 bar)	16 lbs (7.3 kg)	22" (559 mm)	6.75" (171 mm)	1/4"	3/8" (1)
355168	8" - 16" (200-400 mm)	1/2" FNP	7.75"-16.25" (200-400 mm)	13 psi (0.9 bar)	30 ft (9.1 M)	30 psi (2.1 bar)	23 lbs (10.5 kg)	32" (813 mm)	7.5" (194 mm)	1/4"	3/8" (2)
262110	10" (250 mm)	3" FNP	9.00"-10.25" (229-260 mm)	13 psi (0.9 bar)	30 ft (9.1 M)	35 psi (2.4 bar)	9 lbs (4 kg)	11.75" (298 mm)	8.75" (222 mm)	1/4"	3/8" (1)
262129	12" (300 mm)	3" FNP	10.50"-12.25" (267-311 mm)	13 psi (0.9 bar)	30 ft (9.1 M)	35 psi (2.4 bar)	13 lbs (6 kg)	13.75" (350 mm)	10.25" (260 mm)	1/4"	3/8" (1)
265128	12" - 18" (300-450 mm)	4" FNP	10.75"-18.75" (300-450 mm)	13 psi (0.9 bar)	30 ft (9.1 M)	25 psi (1.7 bar)	32 lbs (14.5 kg)	27.25" (692 mm)	10.5" (267 mm)	1/4" (2)	3/8" (2)
355248	12" - 24" (300-600 mm)	1/2" FNP	11.25"-24.0" (286-616 mm)	13 psi (0.9 bar)	30 ft (9.1 M)	30 psi (2.1 bar)	41 lbs (18.6 kg)	40" (1016 mm)	11" (282 mm)	1/4"	3/8" (2)
262137	15" - 16" (375-400 mm)	3" FNP	14.0"-16.0" (356-413 mm)	13 psi (0.9 bar)	30 ft (9.1 M)	35 psi (2.4 bar)	33 lbs (15 kg)	19.75" (502 mm)	13.75" (346 mm)	1/4"	3/8" (1)
*412308	15" - 30" (375-750 mm)	1/2" MNP	14.5"-30.5" (375-750 mm)	**11 psi (0.76 bar)	25 ft (7.6 M)	25 psi (1.7 bar)	62 lbs (28 kg)	51" (1289 mm)	14" (356 mm)	1/4" & 1/2"	3/8" (4)



Pneumatic Plugs



Pneumatic Plugs

Test-Ball®
 Muni-Ball®
 Pressure Charts
 Rupture Disc
 Protective Sleeves
 Remo®
 Big-Mouth®
 Flow-Through
 Factory-Replaceable
 Sleeve Muni-Ball®
 Jet-Ball®
 Air-Loc® Leak Locator
 Long Test-Ball®
 MS2 Test-Ball®
 Clean-Seal®
 Pillow Plugs

Mechanical Plugs
 Deflection Gauges
 Testing Equipment
 Tools & Accessories
 Technical Data
 Contact Us
 Search



Test-Ball®

The Cherne Test-Ball has been the contractor's choice for over 50 years and continues to be the most trusted pneumatic test ball in the industry. Designed for applications from pressure testing and blocking of residential DWV systems to repair maintenance and installation of municipal infrastructure including storm and sanitary sewer piping systems, The Cherne Test-Ball does it all.

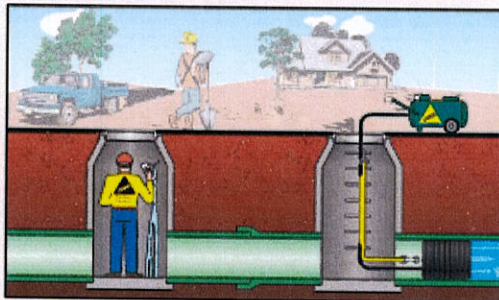
Cherne Test-Balls are durable, rugged and effective in any type of pipe.

- Multi-size: More options, less inventory
- Available with patented field repairable rupture disc technology
- 1/4" Schrader tire valve standard on all plugs
- Large plugs feature a removable valve allowing them to be repaired or replaced with quick disconnect fittings
- All Test-Balls are bendable to 90°

Cherne Test-Balls are now available with patented Rupture Disc Technology. This feature prevents over inflation of the pneumatic plug. Rupture Disc Technology also prevents damage to cording. Damaged cording is an unseen condition that compromises plug performance.



Blocking Sewer Flow



Rupture Disc

- Protect investment
- Prevent damage
- Increase safety



Poly-Lift Line with Gauge

Great for plugs from 6" to 60" with removable tire valves



Part Number	Nominal Size	Range of Use	Maximum Back Pressure	Inflation Pressure	Product Weight	Deflated Length	Deflated Diameter	Inflation Thread	Chain / Eye bolts
270008	.75" - 1.25" (20-30 mm)	.75"-1.30" (20-33 mm)	17 psi (1,2 bar)	40 ft.(12 M) 45 psi (3,1 bar)	3.5 oz (0.1 kg)	3.75" (95 mm)	0.75" (18.5 mm)	Molded in Valve	Removable Chain
270016	1.25-1.5 (30-40 mm)	1.17"-1.75" (30-44 mm)	13 psi (0,9 bar)	30 ft. (9.1 M) 40 psi (2,8 bar)	3.5 oz (0.1 kg)	5.5" (141 mm)	1.1" (33 mm)	Molded in Valve	Removable Chain
276128	1.25 - 2 (32-50 mm)	1.25"-2.10" (32-53 mm)	17 psi (1,2 bar)	40 ft. (12 M) 40 psi (2,8 bar)	3.7 oz (0.11 kg)	5.56" (141 mm)	1.21" (31 mm)	Molded in Valve	Removable Chain
270024	2" (50 mm)	1.9"-2.25" (48-57 mm)	13 psi (0,9 bar)	30 ft. (9.1 M) 40 psi (2,8 bar)	3.5 oz (0.1 kg)	3.5" (85 mm)	1.75" (45 mm)	Molded in Valve	Removable Chain
276238	2" - 3" (50-75 mm)	1.9"-3.25" (48-80 mm)	17 psi (1,2 bar)	40 ft. (12 M) 35 psi (2,4 bar)	4.7 oz (0.13 kg)	5.57" (141 mm)	1.78" (45 mm)	Molded in Valve	Removable Chain
270108	2.5" (65 mm)	2.34"-2.75" (48-70 mm)	13 psi (0,9 bar)	30 ft. (9.1 M) 35 psi (2,4 bar)	6.5 oz (0.2 kg)	4.5" (114 mm)	2.3" (59 mm)	Molded in Valve	Removable Chain
270032									

	3" (75 mm)	2.77"-3.25" (70-83 mm)	13 psi (0,9 bar)	30 ft. (9.1 M)	35 psi (2,4 bar)	6.5 oz (0.2 kg)	5.25" (132 mm)	2.64" (67 mm)	Molded in Valve	Removable Chain
276348	3" - 4" (75-100 mm)	2.8"-4.25" (70-104 mm)	17 psi (1,2 bar)	40 (12 M)	40 psi (2,8 bar)	7.8 oz (0.22 kg)	5.18" (132 mm)	2.64" (67 mm)	Molded in Valve	Removable Chain
270040	4" (100 mm)	3.41"-4.25" (87-108 mm)	13 psi (0,9 bar)	30 (9.1 M)	30 psi (2,1 bar)	9 oz (0.25 kg)	6.5" (163 mm)	3.25" (83 mm)	Molded in Valve	Removable Chain
275048	4" - 6" (100-150 mm)	3.75"-6.25" (92-159 mm)	17 psi (1,2 bar)	40 ft. (12 M)	30 psi (2,1 bar)	2 lbs (0.91 kg)	10.5" (250 mm)	3.5" (85 mm)	1/8" (1)	1/4" (1)
276468	4" - 6" (100-150 mm)	3.4"-6.25" (87-155 mm)	17 psi (1,2 bar)	40 ft. (12 M)	30 psi (2,1 bar)	2 lbs (0.62 kg)	9.47" (241 mm)	3.28" (83 mm)	Molded in Valve	Removable Chain
395088	4" - 8" (100-200 mm)	3.6"-8.25" (92-210 mm)	13 psi (0,9 bar)	30 ft. (9.1 M)	30 psi (2,1 bar)	2.5 lbs (1.13 kg)	20.6" (469 mm)	3.5" (70 mm)	1/4" (1)	3/8" (1)
270059	5" (125 mm)	4.6"-5.25" (117-133 mm)	13 psi (0,9 bar)	30 ft. (9.1 M)	30 psi (2,1 bar)	1.3 lbs (0.6 kg)	7.75" (200 mm)	4.5" (114 mm)	Molded in Valve	Removable Chain
270067	6" (150 mm)	5.44"-6.25" (138-159 mm)	13 psi (0,9 bar)	30 ft. (9.1 M)	30 psi (2,1 bar)	1.9 lbs (0.85 kg)	9" (230 mm)	5.25" (135 mm)	Molded in Valve	Removable Chain
275058	6" - 8" (150-200 mm)	5.25"-8.25" (140-210 mm)	17 psi (1,2 bar)	40 ft. (12 M)	35 psi (2,4 bar)	3.5 lbs (1.6 kg)	14" (356 mm)	4.5" (114 mm)	1/4" (1)	1/4" (1)
395128	6"-12" (150-300 mm)	5.5"-12.25" (140-310 mm)	13 psi (0,9 bar)	30 ft. (9.1 M)	30 psi (2,1 bar)	5.3 lbs (2.4 kg)	26.25" (667 mm)	5.25" (133 mm)	1/4" (1)	3/8" (1)
041386	8" (200 mm)	7"-8.25" (178-210 mm)	17 psi (1,2 bar)	40 ft. (12 M)	25 psi (1,7 bar)	3.4 lbs (1.6 kg)	10.25" (257 mm)	6.75" (172 mm)	1/4" (1)	3/16" (1)
275088	8" - 12" (200-300 mm)	7"-12.25" (178-311 mm)	11 psi (0,75 bar)	25 ft. (8 M)	20 psi (1,4 bar)	6.63 lbs (3 kg)	16" (406 mm)	6.75" (176 mm)	1/4" (1)	3/8" (1)
395168	8" - 16" (200-400 mm)	7.5"-16.25" (186-413 mm)	13 psi (0,9 bar)	30 ft. (9.1 M)	30 psi (2,1 bar)	14.5 lbs (6.5 kg)	29.5" (750 mm)	7.25" (184 mm)	1/4" (1)	3/8" (1)
385168	8" - 16" Short (200-400 mm)	7.5"-16.25" (186-413 mm)	7.5 psi (0,5 bar)	16.75 ft. (5.1 M)	30 psi (2,1 bar)	11 lbs (5 kg)	23" (585 mm)	7.25" (184 mm)	1/4" (1)	3/8" (1)
041394	10" (250 mm)	9"-10.25" (229-260 mm)	17 psi (1,2 bar)	40 ft. (12 M)	25 psi (1,7 bar)	5.6 lbs (2.5 kg)	11.75" (298 mm)	8.75" (221 mm)	1/4" (1)	3/16" (1)
041408	12" (300 mm)	10.5"-12.25" (267-311 mm)	17 psi (1,2 bar)	40 ft. (12 M)	25 psi (1,7 bar)	10.9 lbs (5 kg)	13.75" (351 mm)	10.25" (262 mm)	1/4" (1)	3/16" (1)
275128	12" - 18" (300-450 mm)	10.75"-18.25" (273-464 mm)	11 psi (0,75 bar)	25 ft. (8 M)	25 psi (1,7 bar)	22.4 lbs (10.2 kg)	24" (610 mm)	10.5" (267 mm)	1/4" (1)	3/8" (1)
395248	12" - 24" (300-600 mm)	11"-24.25" (279-616 mm)	13 psi (0,9 bar)	30 ft. (9.1 M)	30 psi (2,1 bar)	28 lbs (12.7 kg)	39.5" (1003 mm)	10.75" (273 mm)	1/4" (1)	3/8" (1)
385248	12" - 24" Short (300-600 mm)	11"-24.25" (279-616 mm)	7.5 psi (0,5 bar)	16.75 ft. (5.1 M)	30 psi (2,1 bar)	24 lbs (11 kg)	33" (839 mm)	10.75" (273 mm)	1/4" (1)	3/8" (2)
*410308	15" - 30" (375-750 mm)	14.5"-30.5" (368-775 mm)		25 ft. (7.6 M)	25 psi (1,7 bar)	45 lbs (21 kg)	51" (1289 mm)	14" (356 mm)	1/4" & 1/2"	3/8" (2)

Line #2

Line #3