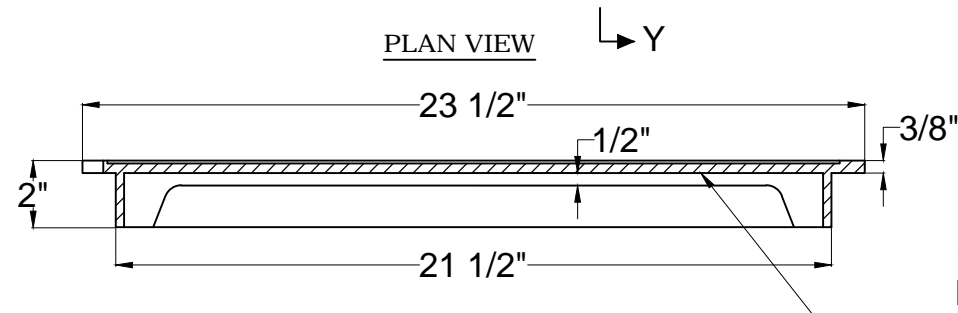


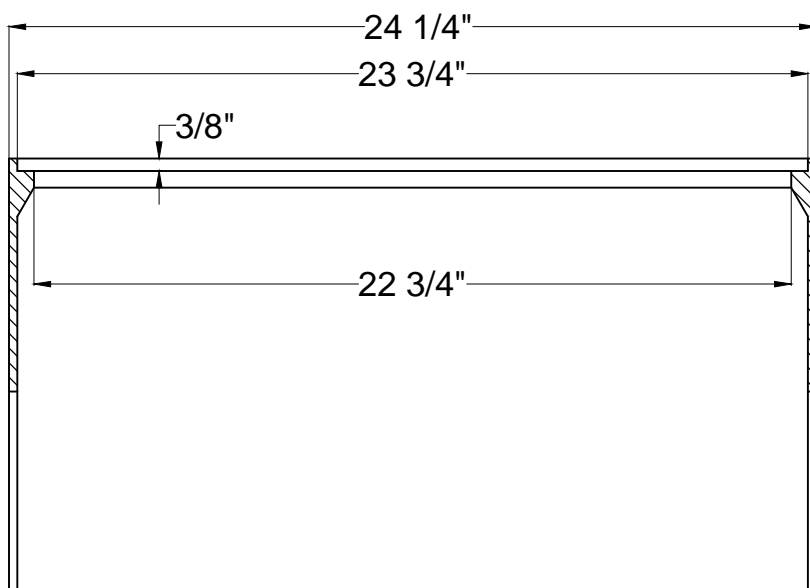
### PLAN VIEW



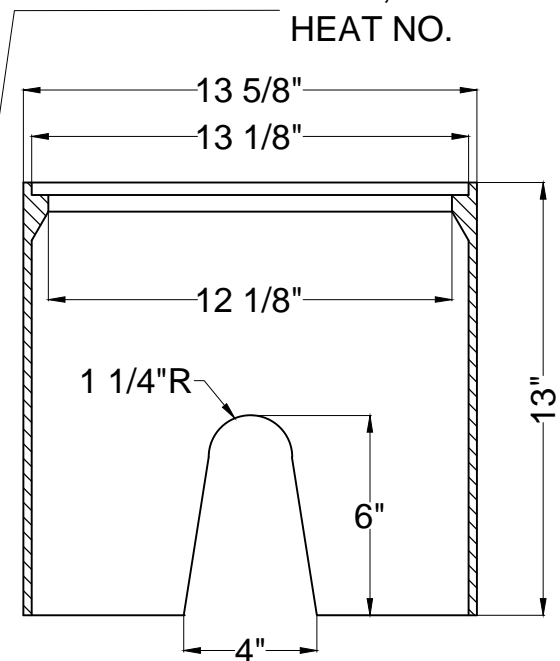
SEC. X-X (LID)

SIGMA  
MB2831  
—  
INDIA, P#  
HEAT NO.

SIGMA  
MB2832  
INDIA, P#  
HEAT NO.




SEC. X-X (BODY)



SEC. Y-Y (BODY)

## NOTES

1. All the dimensions are in inches units.
2. Tolerance should be  $\pm 0.0625$ ", unless otherwise specified.
3. Refer Sigma QIP Doc.No : QA/QIP/MCC for manufacturing and inspection procedure.
4. Material: Cast Iron ASTM A48 Class 30B.
5. Weight : MB2832 (BODY)-- 80 Lbs.  
MB2831 (LID)-- 35 Lbs. } 115 Lbs. (Set)

Rev	Date	Revision Record	Prepared	Approved	All Radii & Fillets to be 0.12" (3) unless otherwise specified All Draft angles to be 2° unless otherwise specified on drawing		 <b>SIGMA™</b> CREAM RIDGE, NEW JERSEY			
0	06.09.2016	Format changed.	PB	SR1	Product Group :- <b>MCC</b>		DATE : <b>06.09.2016</b>		DRAWN BY PB BASANTA DAS	
					Coating:- <b>BLACK BITUMINOUS/ TAR COATED</b>		DRAWING FOR: <b>PRODUCTION</b>		CHECKED BY NS ASHIS DEY	
					Product Description- <b>13 5/8" x 24 1/2" x 13" TRAFFIC METER BOX BODY &amp; LID MARKED "WATER METER"</b>		SCALE: NTS		SHEET NO: 1 OF 1	
					Drawing Number :- <b>MB283</b>		Rev :- <b>0</b>		APPROVED BY  SR1	
					RADIUS: ±.030 MACHINED: .XX±.015					