

118

DATE: 5/03/2021

INVITATION TO BID
THIS IS NOT AN ORDER

Page: 5

BID NO.: 50-00134469

JEFFERSON PARISH

PURCHASING DEPARTMENT
P.O. BOX 9
GRETN, LA. 70054-0009
504-364-2678

VENDOR:

BUYER: DABRAHAM

As per LSA-RS 47:301 et seq., all governmental bodies are excluded from payment of sales taxes to any Louisiana taxing body. Quotations shall be based on F.O.B. Agency warehouse or jobsite, anywhere within the Parish as designated by the Purchasing Department.

JEFFERSON PARISH reserves the right to cancel all or any part of an order if not shipped promptly. No charges will be allowed for parking or cartage unless specified in quotation. The order must not be filled at a higher price than quoted. JEFFERSON PARISH reserves the right to cancel at any time and for any reason by issuing a THIRTY (30) day written notice to the contractor.

JEFFERSON PARISH is expecting all products to be new and all work to be done in workman-like manner, according to standard practices. Any deviations or alteration from the specifications must be indicated on the bid form for each item and upon request, product data for same must be submitted by the time specified by the Purchasing Department.

DELIVERY: FOB JEFFERSON PARISH

INDICATE DELIVERY DATE ON EQUIPMENT AND SUPPLIES

10-12 weeks or sooner

INDICATE STARTING TIME (IN DAYS) FOR CONSTRUCTION WORK

10-12 weeks

INDICATE COMPLETION TIME (IN DAYS) FOR CONSTRUCTION WORK

1 DAY DELIVERY

In the event that addenda are issued with this bid, bidders MUST acknowledge all addenda on the bid form. Bidder must acknowledge receipt of an addendum on the bid form by placing the addendum number as indicated. Failure to acknowledge any addendum on the bid form will result in bid rejection.

Acknowledge Receipt of Addenda: NUMBER: _____

NUMBER: _____

NUMBER: _____

NUMBER: _____

LOUISIANA CONTRACTOR'S LICENSE NO.: (if applicable) _____

*** ALL BIDDERS MUST COMPLETE SECTION BELOW ***	
FIRM NAME: <u>RICHARD BRETZ AND ASSOCIATES, INC</u>	
SIGNATURE: (Must be signed here)	TITLE: <u>PRESIDENT</u>
PRINT OR TYPE NAME: <u>RICHARD H. BRETZ, JR</u>	
ADDRESS: <u>5613-B BLESSEY ST.</u>	
CITY, STATE:	ZIP: <u>70123</u>
TELEPHONE: <u>(504) 733-6107</u>	FAX: <u>(504) 734-1613</u>
EMAIL ADDRESS: <u>richard@bretzassociates.com</u>	

TOTAL PRICE OF ALL BID ITEMS: \$ #11,465

DATE: 5/03/2021

Page: 6

218

INVITATION TO BID FROM JEFFERSON PARISH - continued

BID NO.: 50-00134469

SEALED BID

ITEM NUMBER	QUANTITY	U/M	DESCRIPTION OF ARTICLES	UNIT PRICE QUOTED	TOTALS
1	1.00	JOB	<p>A lump sum bid to supply (3) custom impact windstorm rated steel doors for Lafitte Pump Stations</p> <p>0001 SUPPLY MATERIALS FOR THREE (3) CUSTOM IMPACT WINDSTORM RATED STEEL FRAME DOORS FOR LAFITTE PUMP STATIONS.</p> <p>ALL THREE DOORS SHALL BE DELIVERED TO THE AMES PUMP STATION WAREHOUSE AT 5100 ROCHESTER DRIVE MARRERO, LA 70072.</p> <p>ALL DOORS, FRAMES, AND HARDWARE SHALL BE ASSEMBLED AND READY TO SLIDE IN FOR OWNER INSTALLATION.</p> <p>FOR SITE VISIT TO DETERMINE ACTUAL DEMENSIONS OF DOORS, PLEASE CONTACT:</p> <p>JAMAL SINGLETON AT 504-349-5037 JSINGLETON@JEFFPARISH.NET</p>	\$ 11,465	\$ 11,465

Lafitte Pump Station Door Specifications

This is a lump sum bid for materials, and equipment necessary for three (3) custom impact windstorm rated steel frame doors for Lafitte pump stations.

Location: Pre-Bid Conference

Not required for this project.

License required:

No License required.

Bonds:

Bonds are not required.

General:

1. All three doors shall be delivered fully assembled with all hinges, hardware, and frame to the Ames pump station warehouse at 5100 Rochester Drive, Marrero, LA 70072.
2. All doors, frames, hinges, locks, handles, and any hardware specified in bid shall be fully assembled prior to delivery.
3. Doors and frame needs to be labeled:
UL Classified in accordance with ANSI/SDI-BHMA A250.13 Testing & Rating of Severe Windstorm Resistant Components of Swinging Door Assemblies.
4. Time from bid award to completion is ninety (90) days.
5. Field Measurements: Verify actual dimensions of openings by field measurements before fabrication. All steel frames are located at the Ames pump station warehouse. Bidding vendors may contact Jamal Singleton at 504-349-5034 or JSingleton@jeffparish.net to schedule a site visit for measurements.
6. Quality Standard: In addition to requirements specified, comply with ANSI/SDI A250.8, latest edition, "Recommended Specifications for Standard Steel Doors and Frames".
7. Owner must approve submitted keying schedule prior to the ordering of permanent cylinders/cores.

Submittals:

Any exception to this specification requires the vendor submit a letter attached to the documents listing in detail how it differs from the specifications. Mere attachment of brochures covering standard manufactured equipment when such differs from these specifications shall not be adequate to satisfy the letter of exceptions requirement. Such items may include

- A complete specification and submittal of all major components.

SPECIFICATIONS FOR BID # 50-134469

4/8

- One copy of all "Bill of Materials" of the unit's construction, hardware, and dimensions as offered to confirm compliance with the specifications.
 - One descriptive brochure showing photographs and/or describing the proposed alternative.
- Any bidder not able to supply information shall be considered non-responsive and shall not be accepted.

Vendor must submit specifications on "equal" with bid submission.

Material:

The following shall be provided for EACH door. All other hardware required for installation under these specifications shall also be included in bid price.

Quantity	Description
3	Custom Impact Windstorm Rated Steel Frame, 16 Gauge, Welded, Galvanized, Primed, Reinforced for Closer & Hinges
6	Custom Impact Windstorm Rated Steel Doors, 16 Gauge Galvanized, Seamless Welded Edges, Steel Stiffen Core, Reinforced for Closer & Hinges
3	Best #45H-7A-14H-626 Mortise Lock, Rose, Entry, 626
3	Best #1E74-C4 Cylinder Housing
3	Best #1CC7A2 Construction Core w/ Control & Construction Keys
3	Best Cormax 7 Pin Final Core, Keyed to Parish System
3	Dorma #8916SPAT Closer, Super Arm, Hold Open, 689 <u>see equal</u>
6	Hager #780-224HD Continuous Hinges, Full Mortise, Geared, Heavy Duty, Clear <u>see equal</u>
6	Hager #282D Flush Bolts, Manual, 626 <u>see equal</u>
3	NGP #425SIA Threshold, Slip Resistant-Non Skid, Aluminum
6	NGP #101V Sweeps, Drip Edge, Clear
6	Hager #190S Kick Plates, 8" Height, Stainless Steel
3	Labor to Install all listed parts and components of doors and hardware
16	Door keys according to Parish key schedule (coordinated after bid is awarded)
6	Master keys according to Parish key schedule (coordinated after bid is awarded)

Warranty:

1. Special Warranty: Manufacturer's standard form in which manufacturer agrees to repair or replace doors that fail in materials or workmanship within specified warranty period.

8000 SERIES

ANSI GRADE 1

ANSI GRADE 1

ANSI/BHMA A156.4

Series 2000, PT1

Exceeds 1,500,000 cycles with Backcheck



LISTED

UL10C Positive Pressure
Rated. Conforms to UBC
7-2 (1997). (Uniform
Building Code Standard)



Comply with
ANSI A117.1

25-Year Warranty

Model

8000

Adjustable power size 1-6 with Back Check

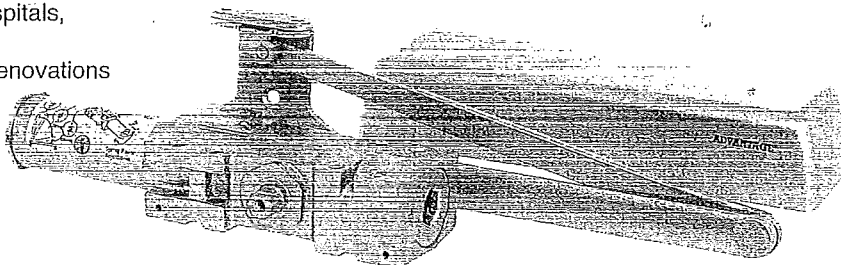
8000/DA

Adjustable power size 1-6 with Delay Action

EQUAL TO
DORMA CLOSER

Applications

- Extra Heavy Duty Commercial model ideal for high traffic door
- Versatile for new constructions, such as schools, hospitals, and public institutions
- Same mounting hole pattern as LCN4041, ideal for renovations
- Tri-packed for all type applications
- Sex-bolts included for Metal Door mounting



Features

- Multi-size spring adjustable power size 1-6
- Factory preset size 3
- Meet ADA

Product Specification

Material	Heavy Duty Cast Iron body, forged steel arm Heat treated forged steel piston Double Heat treated Steel pinion
Cover	Full plastic cover – standard
Valves	Triple valve control for Closing speed, Latching speed, and Back-check cushion Delayed Action Valve – Optional (Model: 8000DA) Staked valve for power adjustment
Arm & Brackets	Standard arm and parallel bracket included for different mounting demand
Screws	Self-tapping wood screws, machine screws, and sex-bolts
Finishes	Aluminum, Duronotic, Gold, and US26D-Satin Chrome

Optional Functions

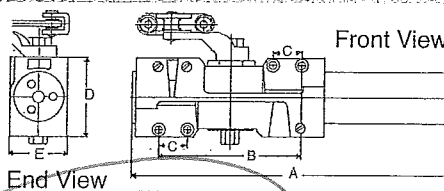
Wide choice of options for different applications

- Hold Open Arm (8001)
- Parallel Rigid Cush Arm (8002)
- Parallel Rigid Cush and Stop Arm (8003)
- Extended forearm (8004)
- Parallel Rigid Arm (8005)
- Drop Plate (see Accessories)

- * Special order from the factory
- Metal cover
- Plated Finish: US3, US26

Technical Dimensions

Series 8000	Size
A. Length of Closer Body	11"
B. Horizontal Mounting Holes	5"
C. Vertical Mounting Holes	1"
D. Height of Closer Body	2-3/4"
E. Projection from Door	2"



Accessories

80DP-ST

Size: 12-1/4 x 3-9/16"

Drop Plate – Pull Side

Hinge side mount when top rail is less than 3-3/4"
Plate require 2" minimum top rail

80DP-TJ

Size: 12-1/4 x 3-9/16"

Drop Plate – Top Jamb

Use when frame face is less than 3 1/2"
Use 8004 forearm if top reveal exceeds 2-9/16"

80DP-TG

Size: 12-1/4 x 3-9/16"

Drop Plate – Top Jamb

with flush ceiling

Top of head frame face in flush ceiling condition
Plate requires 1-3/4" minimum frame face
Use 8004 forearm if top reveal exceeds 2-9/16"

80DP-PA

Size: 12-1/4 x 5"

Drop Plate – Parallel Arm

Use when top rail is less than
5-1/2", measured from the stop
Plate requires at least 2-1/2" top rail

80C

Standard Full
Plastic Cover

1348

Sex-bolt with screw



8001

Hold-open Arm

Stand for pull side & top jamb
Use with PA bracket for
parallel arm mount



8002

Parallel Rigid

Cush Arm
Auxiliary Stop in
soffit shoe



8003

Parallel Rigid

Hold Open Cush Arm
Hand control plunger hold open
Auxiliary stop in soffit shoe



8005

Parallel Rigid Arm

Featured with solid steel
main & forearm for extra
heavy traffic use

8003SG

Parallel Rigid Hold Open Spring Cush Arm

Hand control plunger hold open. Spring stop in soffit shoe

HFW01 Flat Wrench for Hold Open Arm

8004

Extended Forearm

For Top Jamb with
reveal between
2-5/8" to 4-13/16"

PAB01

Parallel Bracket

For Hold Open Arm mounting
can also use for regular parallel
arm application

BSS01

Blade Stop Spacer

Design to lower parallel
arm shoe to clear 1/2"
(13 mm) blade stop

ASB01

Arm Support Bracket

Use with Cush Arms when

reveal is less than 3-1/16" (78 mm). The
bracket provides anchorage for fifth screw loading

ADVANTAGE®

by PHILADELPHIA HARDWARE GROUP

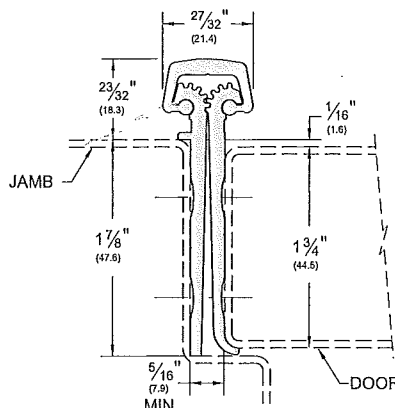
Full Mortise Hinges

- Full-Mortise units are designed mainly for new door applications and are applied to the frame rabbet and door edge to conceal both leaves

Full Mortise

FM

AVAILABLE FINISHES: BL, C, D, G, PW, SN

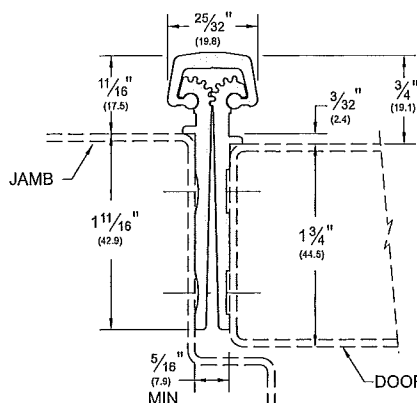


Full Mortise Short Leaf Inset

- Designed for use with doors which range between 1 3/4" to 2 1/4"
- Designed for use with hollow metal doors and frames where the inset conforms to S.D.I. specifications for aligning doors and frames

CFM_SLI HDI

AVAILABLE FINISHES: BL, C, D, G, PW, SN



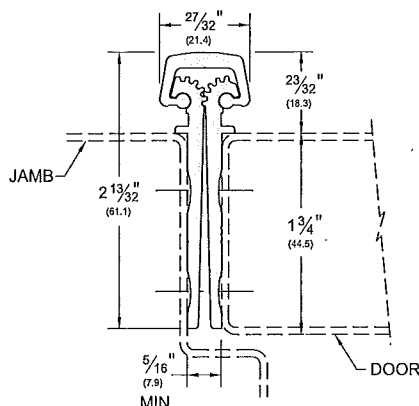
EQUAL TO
Hager #780-224
HD

Full Mortise Short Leaf Flush

- Designed for use with doors which range between 1 3/4" to 2 1/4"
- Also used for bifold applications to keep the faces of the doors flush (not illustrated)

_FM_SLF

AVAILABLE FINISHES: BL, C, D, G, PW, SN

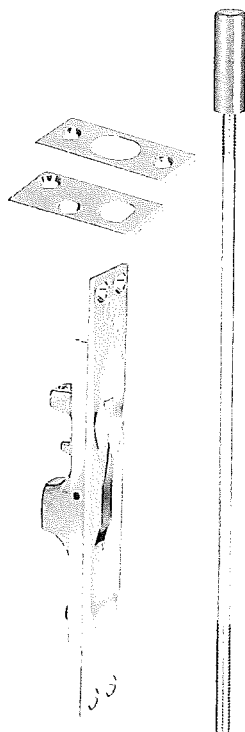


AVAILABLE FINISHES FOR PRODUCTS SHOWN ON THIS PAGE (see General Information section for finish chart)
BL (Black Anodized) C (Clear Anodized) D (Dark Bronze Anodized) G (Gold Anodized)
PW (Painted White) and SN (Satin Nickel) are special finishes available upon request.

ASSA ABLOY

The global leader in
door opening solutions

8/8



Lever Extension Flush Bolt (Fire Rated Hollow Metal Swinging Doors measuring up to 4'w x 10'h rated up to and including 3 hours.)

No. 555

Material: Brass.

Finishes: Available in standard architectural finishes (see page 7).

Fastener: 8 ea. #8 x 3/4 FH Combo Screws

Features:

- Fits ANSI A115 door and frame preparation.
- 3/4" bolt throw, 3/4" rod backset.
- 12" rod length (center of face to bolt end - retracted).
- 1 1/2" adjustable bolt head.

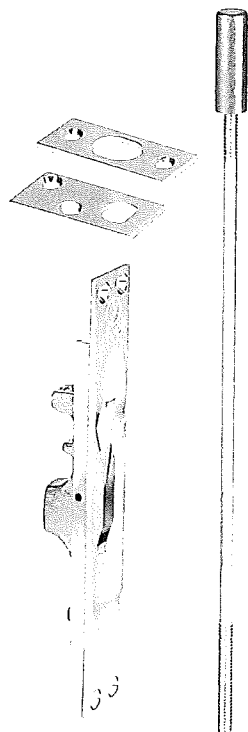
Options:

- Other size rods available are 18", 24", 36", 48".
- Extra long bolt head - 2 1/2" (or to your specification).
- Use #570 Dust Proof Strike (shown on page E3) to prevent dirt blocking bottom strike.

No.	Size	Weight	ANSI A156.16
555	Face Plate: 1" x 6 3/4"	1.5 lbs./2	L04251
	Strike: 1 5/16" x 2 1/4"		
	Guide: 1" x 2"		

EQUAL TO HAGER

#282D



Lever Extension Flush Bolt With Bottom Fire Bolt (Fire Rated Hollow Metal Swinging Doors measuring up to 4'w x 9'h rated up to and including 3 hours.)

No. 555 x 18BFB

Material: Flush Bolt - Brass
Bottom Fire Bolt - Stainless Steel

Finishes: Available in standard architectural finishes (see page 7).

Fastener: 8 ea. #8 x 3/4 FH Combo Screws

Features:

- Fits ANSI A115 door and frame preparation.
- 3/4" bolt throw, 3/4" rod backset.
- 12" rod length (center of face to bolt end - retracted).
- 1 1/2" adjustable bolt head.
- When door is subjected to 230°F the plug and black plastic cover will melt allowing the bolt to project, locking the leaves together.
- Bottom fire bolt eliminates need for floor prep.
- Oversize fire bolt strike hole allows for slight door misalignment.

Options:

- Other size rods available are 18", 24", 36", 48".
- Extra long bolt head - 2 1/2" (or to your specification).

No.	Size	Weight
555 x 18BFB	Top Bolt: 1" x 6 3/4"	0.9 lbs.
	Bottom Bolt: 1 3/16" dia.	