



**CENTRALBIDDING**  
FROM CENTRAL AUCTION HOUSE

**5000121034 PURCHASE OF A RUBBER FLAPPER CHECK VAVE FOR  
THE JEFFERSON PARISH EB WATER PLANT**  
Jefferson Parish Government

Project documents obtained from [www.CentralBidding.com](http://www.CentralBidding.com)

21-Sep-2017 11:45:51 AM

DATE: 9/18/2017

**INVITATION TO BID  
THIS IS NOT AN ORDER**

Page: 1

BID NO.: 50-00121034

**JEFFERSON PARISH**

PURCHASING DEPARTMENT  
P.O. BOX 9  
GRETN, LA. 70054-0009  
504-364-2678

VENDOR: *Consolidated Pipe and Supply* BUYER: SFOLSE@jeffparish.net

Bids will be received until 11:00 AM, 9/22/2017 via online at [www.jeffparishbids.net](http://www.jeffparishbids.net) or by hand delivery, USPS mail or other courier service to Purchasing Department, 200 Derbigny Street (General Government Building), Suite 4400, Gretna, LA 70053. For convenience, bidders may also submit bids in the East Bank Purchasing Department, Suite 404, Jefferson Parish Joseph S. Yenni Building, 1221 Elmwood Park Blvd., Jefferson LA 70123. However, if submitting bids on the day of bid opening, bidders must submit at the West Bank location only.

All bids submitted are subject to these instructions and general conditions and any special conditions and specifications contained herein, all of which are made part of this bid proposal reference. By submitting a bid, vendor agrees to comply with all provisions of Louisiana Law, as well be in compliance with the Jefferson Parish Code of Ordinances, Louisiana Code of Ethics, applicable Jefferson Parish ethical standards and Jefferson Parish Resolution No. 113646 and/or Resolution No. 113647. A copy of these resolutions may be obtained from the Office of the Parish Clerk, Suite 6700, Jefferson Parish General Government Building, 200 Derbigny Street, Gretna, LA 70053. You may also obtain a copy by visiting the Purchasing Department webpage at [purchasing.jeffparish.net](http://purchasing.jeffparish.net) and clicking on On-line forms.

All vendors submitting bids should register as a Jefferson Parish vendor if not already yet registered. Registration forms may be downloaded from <http://purchasing.jeffparish.net> and by clicking on Vendor Information. Current W-9 forms with respective Tax Identification numbers and vendor applications may be submitted at any time; however, if your company is not registered and/or a current W-9 form is not on file, vendor registration is mandatory. Further, a current W-9 form and respective Tax Identification number must be supplied upon contract execution, should you be awarded a contract and/or issued purchase order. Failure to do so may result in delay of payment.

As per LSA-RS 47:301 et seq., all governmental bodies are excluded from payment of sales taxes to any Louisiana taxing body. Quotations shall be based on F.O.B. Delivered, anywhere within the Parish as designated by the Purchasing Department. **JEFFERSON PARISH WILL ACCEPT ONE BID ONLY FROM EACH VENDOR.** Items bid must meet specifications. JEFFERSON PARISH will accept one price for each item unless otherwise indicated. Two or more prices for one item will result in bid rejection. Bidders are required to complete, sign and return the bid form and/or complete and return the associated line item pricing forms as indicated. The price quoted for work shall be stated in figures. In the event there is a difference in unit prices and totals, the unit prices shall prevail.

JEFFERSON PARISH reserves the right to award contracts or place orders on a lump sum or individual item basis, or such combination, as shall in its judgment be in the best interest of JEFFERSON PARISH. Every contract or order shall be awarded to the **LOWEST RESPONSIVE and RESPONSIBLE BIDDER**, taking into consideration the **CONFORMITY WITH THE SPECIFICATIONS and the DELIVERY AND/OR COMPLETION DATE**

**PROTESTS:** Only those vendors that submitted a bid in response to this solicitation may submit a protest in writing to the Director of the Purchasing within 48 hours of bid opening. The Purchasing Director will review it in connection with the Parish Attorney's Office as appropriate and a written response will be provided as soon as possible.

JEFFERSON PARISH reserves the right to cancel all or any part of an order if not shipped promptly. No charges will be allowed for parking or cartage unless specified in the quotation. The order must not be filled at a higher price than quoted. JEFFERSON PARISH reserves the right to cancel at any time and for any reason by issuing a **THIRTY (30) day** written notice to the contractor.

JEFFERSON PARISH requires all products to be new (current) and all work must be performed according to standard practices for the project. Unless otherwise specified, no aftermarket parts will be accepted. Unless otherwise specified, all workmanship and materials must have at least one (1) year guaranty, in writing, from the date of delivery and/or acceptance of the project. Any deviations or alteration from the specifications must be indicated on the bid form for each item and upon request, product data for same must be submitted by the time specified by the Purchasing Department.

If this bid requires a pre-bid conference (see Additional Requirements section), bidders are advised that such conference will be held to allow bidders the opportunity to identify any discrepancies in the bid specifications and seek further clarification regarding instructions. The Purchasing Department will issue a written response to bidders' questions in the form of an Addendum.

All formal Addenda require written acknowledgment on the bid form by the bidder. Failure to acknowledge an Addendum on the bid form shall cause the bid to be rejected; JEFFERSON PARISH reserves the right to award bid to next lowest responsive and responsible bidder in this event.

**USE OF BRAND NAMES AND STOCK NUMBERS:** Where brand names and stock numbers are specified, it is for the purpose of establishing certain minimum standards of quality. Bids may be submitted for products of equal quality, provided brand names and stock numbers are specified. Complete product data may be required prior to award.

Quantities listed are for bidding purposes only. Actual requirements may be more or less than quantities listed.

Bidders are not to exclude from participation in, deny the benefits of, or subject to discrimination under any program or activity, any person in the United States on the grounds of race, color, national origin, or sex; nor discriminate on the basis of age under the Age Discrimination Act of 1975, or with respect to an otherwise qualified handicapped individual as provided in Section 504 of the Rehabilitation Act of 1973, or on the basis of religion, except that any exemption from such prohibition against discrimination on the basis of religion as provided in the Civil Rights Act of 1964, or Title VI and VII of the Act of April 11, 1968, shall also apply. This assurance includes compliance with the administrative requirements of the Revenue Sharing final handicapped discrimination provisions contained in Section 51.55 (c), (d), (e), and (k)(5) of the Regulations. New construction or renovation projects must comply with Section 504 of the 1973 Rehabilitation Act, as amended, in accordance with the American National Standard Institute's specifications (ANSI A17.1-1961).

Jefferson Parish and its partners as the recipients of federal funds are fully committed to awarding a contract(s) to firm(s) that will provide high quality services and that are dedicated to diversity and to containing costs. Thus, Jefferson Parish strongly encourages the involvement of minority and/or woman-owned business enterprises (DBE's, including MBE's, WBE's and SBE's) to stimulate participation in procurement and assistance programs.

DATE: 9/18/2017

BID NO.: 50-00121034

Page: 2

**INSTRUCTIONS FOR BIDDERS AND GENERAL CONDITIONS****IN ACCORDANCE WITH STATE REGULATIONS JEFFERSON PARISH OFFERS ELECTRONIC PROCUREMENT TO ALL VENDORS**

This electronic procurement system allows vendors the convenience of reviewing and submitting bids online. This is a secure site and authorized personnel have limited read access only. Bidders are encouraged to submit electronically using this free service; while the website accepts various file types, one single PDF file containing all appropriate and required bid documents is preferred. Bidders submitting uploaded images of bid responses are solely responsible for clarity. If uploaded images/documents are not legible, then bidder's submission will be rejected. Please note all requirements contained in this bid package for electronic bid submission.

Please visit our E-Procurement Page at [www.jeffparishbids.net](http://www.jeffparishbids.net) to register and view Jefferson Parish solicitations. For more information, please visit the Purchasing Department page at <http://purchasing.jeffparish.net>.

**ADDITIONAL REQUIREMENTS FOR THIS BID**

PLEASE MATCH THE NUMBERS PRINTED IN THIS BOX WITH THE CORRESPONDING INSTRUCTIONS BELOW.

13

1. All bidders must attend the MANDATORY pre-bid conference and will be required to sign in and out as evidence of attendance. In accordance with LSA R.S. 38:2212(l), all prospective bidders shall be present at the beginning of the MANDATORY pre-bid conference and shall remain in attendance for the duration of the conference. Any prospective bidder who fails to attend the conference or remain for the duration shall be prohibited from submitting a bid for the project.
2. Attendance to this pre-bid conference is optional. However, failure to attend the pre-bid conference shall not relieve the bidder of responsibility for information discussed at the conference. Furthermore, failure to attend the pre-bid conference and inspection does not relieve the successful bidder from the necessity of furnishing materials or performing any work that may be required to complete the work in accordance with the specification with no additional cost to the owner.
3. Contractor must hold current applicable JEFFERSON PARISH licenses with the Department of Inspection and Code Enforcement. Contractor shall obtain any and all permits required by the JEFFERSON PARISH Department of Inspection and Code Enforcement. The contractor shall be responsible for the payment of these permits. All permits must be obtained prior to the start of the project. Contractor must also hold any and all applicable Federal and State licenses. Contractor shall be responsible for the payment of these permits and shall obtain them prior to the start of the project.
4. A LA State Contractor's License will be required in accordance with LSA R.S. 37-2150 et. seq. and such license number will be shown on the outside of the bid envelope. Failure to comply will cause the bid to be rejected. Additionally if submitting the bid electronically, then the license number must be entered in the appropriate field in the Electronic Procurement system. Failure to comply will cause the bid to be rejected.
5. It is the bidder's responsibility to visit the job site and evaluate the job before submitting a bid.
6. Job site must be clean and free of all litter and debris daily and upon completion of the contract. Passageways must be kept clean and free of material, equipment, and debris at all times. Flammable material must be removed from the job site daily because storage will not be permitted on the premises. Precautions must be exercised at all times to safeguard the welfare of JEFFERSON PARISH and the general public.

DATE: 9/18/2017

Page: 3

BID NO.: 50-00121034

**INSTRUCTIONS FOR BIDDERS AND GENERAL CONDITIONS**

7. **PUBLIC WORKS BIDS:** All awards for public works in excess of \$5,000.00 will be reduced to a formal contract which shall be recorded at the contractor's expense with the Clerk of Court and Ex-Officio Recorder of Mortgages for the Parish of Jefferson. A price list of recordation costs may be obtained from the Clerk of Court and Ex-Officio Recorder of Mortgages for the Parish of Jefferson. All awards in excess of \$25,000.00 will require both a performance and a payment bond. Unless otherwise stated in the bid specifications, the performance bond requirements shall be 100% of the contract price. Unless otherwise state in the bid specifications, the payment bond requirements shall be 100% of the contract price. Both bonds shall be supplied at the signing of the contract.
8. **NON-PUBLIC WORKS BIDS:** A performance bond will be required for this bid. The amount of the bond will be 100% of the contract price unless otherwise indicated in the specifications. The performance bond shall be supplied at the signing of the contract.
9. **NON-PUBLIC WORKS BIDS:** A payment bond will be required for this bid. The amount of the bond will be 100% of the contract price unless otherwise indicated in the specifications. The payment bond shall be supplied at the signing of the contract.
10. Unless otherwise stated in the bid specifications, the successful bidder will be required to procure standard insurance policies evidencing Parish-mandated insurance requirements as indicated on the attached "insurance requirements" sheet. All bidders must comply with the instructions in this sheet. Failure to comply will cause bid to be rejected.
11. A bid bond will be required with bid submission in the amount of 5% of the total bid, unless otherwise stated in the bid specifications. Acceptable forms shall be limited to cashier's check, certified check, or surety bid bond. All sureties must be in original format (no copies). If submitting a bid online, vendors must submit an electronic bid bond through the respective online clearinghouse bond management system(s) as indicated in the electronic bid solicitation on Central Auction House. No scanned paper copies of any bid bond will be accepted as part of the electronic bid submission.
12. This is a requirements contract to be provided on an as needed basis. JEFFERSON PARISH makes no representations on warranties with regard to minimum guaranteed quantities unless otherwise stated in the bid specifications.
13. Freight charges should be included in total cost when quoting. If not quoted FOB DELIVERED, freight must be quoted as a separate item. Bid may be rejected if not quoted FOB DELIVERED or if freight charges are not indicated on bid form.
14. **PUBLIC WORKS BIDS - Completed, Signed and Properly Notarized Affidavits Required;** This applies to all solicitations for construction, alteration or demolition of public buildings or projects, in conformity with the provisions contained in LSA-RS 38:2212.9, LSA-RS 38:2212.10, LSA-RS 38:2224, and Sec 2-923.1 of the Jefferson Parish Code of Ordinances. For bidding purposes, all bidders must submit with bid submission COMPLETED, SIGNED and PROPERLY NOTARIZED Affidavits, including: Non-Conviction Affidavit, Non-Collusion Affidavit, Campaign Contribution Affidavit, Debt Disclosures Affidavit and E-Verify Affidavit. For the convenience of vendors, all affidavits have been combined into one form entitled PUBLIC WORKS BID AFFIDAVIT. This affidavit must be submitted in its original format, and without material alteration, in order to be compliant and for the bid to be considered responsive. A scanned copy of the completed, signed and properly notarized affidavit may be submitted with the bid, however, the successful bidder must submit the original affidavit in its original format and without material alteration upon contract execution. Failure to comply will result in the bid submission being rejected as non-responsive. The Parish reserves the right to award bid to the next lowest responsive and responsible bidder in this event.
15. **NON PUBLIC WORK BIDS - Completed, Signed and Properly Notarized Affidavits Required** in conformity with the provisions contained in LSA – RS 38:2224 and Sec 2-923.1 of the Jefferson Parish Code of Ordinances. For bidding purposes, all bidders must submit with bid submission COMPLETED, SIGNED and PROPERLY NOTARIZED Affidavits, including: Non-Collusion Affidavit, Debt Disclosures Affidavit and Campaign Contribution Affidavit. For the convenience of vendors, all affidavits have been combined into one form entitled NON PUBLIC WORKS BID AFFIDAVIT. This affidavit must be submitted in its original format, and without material alteration, in order to be compliant and for the bid to be considered responsive. A scanned copy of the completed, signed and properly notarized affidavit may be submitted with the bid, however, the successful bidder must submit the original affidavit in its original format and without material alteration upon contract execution. Failure to comply will result in the bid submission being rejected as non-responsive. The Parish reserves the right to award bid to the next lowest responsive and responsible bidder in this event.
16. The ensuing contract for this bid solicitation may be eligible for FEMA reimbursement and/or Federal funding/reimbursement. As such, the referenced appendix will be applicable accordingly and shall be considered a part of the bid documents. All applicable certifications must be duly completed, signed and submitted with bid submission. Failure to submit applicable certifications with bid submission will result in bid rejection.

It shall be the duty of every parish officer, employee, department, agency, special district, board, and commission; and the duty of every contractor, subcontractor, and licensee of the parish, and the duty of every applicant for certification of eligibility for a parish contract or program, to cooperate with the Inspector General in any investigation, audit, inspection, performance review, or hearing pursuant to Jefferson Parish Code of Ordinances Section 2-155.10(19). By submitting a bid, vendor acknowledges this and will abide by all provisions of the referenced Jefferson Parish Code of Ordinances.

DATE: 9/18/2017

INVITATION TO BID  
THIS IS NOT AN ORDER

Page: 4

BID NO.: 50-00121034

## JEFFERSON PARISH

PURCHASING DEPARTMENT  
P.O. BOX 9  
GRETN, LA. 70054-0009  
504-364-2678VENDOR: Consolidated Pipe AND Supply

BUYER: SFOLSE

As per LSA-RS 47:301 et seq., all governmental bodies are excluded from payment of sales taxes to any Louisiana taxing body. Quotations shall be based on F.O.B. Agency warehouse or jobsite, anywhere within the Parish as designated by the Purchasing Department.

JEFFERSON PARISH reserves the right to cancel all or any part of an order if not shipped promptly. No charges will be allowed for parking or cartage unless specified in quotation. The order must not be filled at a higher price than quoted. JEFFERSON PARISH reserves the right to cancel at any time and for any reason by issuing a THIRTY (30) day written notice to the contractor.

JEFFERSON PARISH is expecting all products to be new and all work to be done in workman-like manner, according to standard practices. Any deviations or alteration from the specifications must be indicated on the bid form for each item and upon request, product data for same must be submitted by the time specified by the Purchasing Department.

## DELIVERY: FOB JEFFERSON PARISH

INDICATE DELIVERY DATE ON EQUIPMENT AND SUPPLIES

4-5 WEEKS

INDICATE STARTING TIME (IN DAYS) FOR CONSTRUCTION WORK

INDICATE COMPLETION TIME (IN DAYS) FOR CONSTRUCTION WORK

In the event that addenda are issued with this bid, bidders MUST acknowledge all addenda on the bid form. Bidder must acknowledge receipt of an addendum on the bid form as indicated. Failure to acknowledge any addendum on the bid form will result in bid rejection.

Acknowledge Receipt of Addenda: NUMBER: \_\_\_\_\_

NUMBER: \_\_\_\_\_

NUMBER: \_\_\_\_\_

NUMBER: \_\_\_\_\_

LOUISIANA CONTRACTOR'S LICENSE NO.: (if applicable) \_\_\_\_\_

## \*\*\* ALL BIDDERS MUST COMPLETE SECTION BELOW \*\*\*

FIRM NAME:		<u>Consolidated Pipe AND Supply</u>	
SIGNATURE:		TITLE:	
(Must be signed here) <u>Timothy Randall</u>		<u>Branch Manager</u>	
PRINT OR TYPE NAME:			
<u>Timothy RANDALL</u>			
ADDRESS:			
<u>812 Little Farms Ave</u>			
CITY, STATE:		ZIP:	
<u>Metairie, LA</u>		<u>70003</u>	
TELEPHONE:		FAX:	
<u>504-737-1212 office</u>		<u>504-737-7909</u>	
EMAIL ADDRESS:			
<u>TRANDALL@ConsolidatedPipe.com</u>			

TOTAL PRICE OF ALL BID ITEMS: \$ 9,563.33

DATE: 9/18/2017

Page: 5

## INVITATION TO BID FROM JEFFERSON PARISH - continued

BID NO.: 50-00121034

SEALED BID

ITEM NUMBER	QUANTITY	U/M	DESCRIPTION OF ARTICLES	UNIT PRICE QUOTED	TOTALS
1	1.00	EA	<p>PURCHASE OF A RUBBER FLAPPER CHECK VALVE FOR THE JEFFERSON PARISH EB WATER PLANT</p> <p>0010 24 IN. FIGURE SB200-D OR EQUIVALENT RUBBER FLAPPER CHECK VALVE</p> <p>***SEE ATTACHED SPECIFICATION SHEETS****</p> <p>TO BE SHIPPED TO: JEFFERSON PARISH EB WATER PLANT 3600 JEFFERSON HWY., BLDG. D JEFFERSON, LA 70121</p> <p>ATTN: MERVIN GRAVES</p>	9,563.33	9,563.33

## Rubber Flapper Check Valve

### 1.0 GENERAL

- A. Provide two (1) – Golden Anderson 24" Figure SB200-D or equivalent rubber flapper check valve. This shall be to replace an existing valve on the East Bank Water Treatment Plant transfer pump number 1. Face to face shall measure no more than 48 inches.
- B. Winning bidder shall have valve delivered to the East bank Water Treatment Plant within 6 weeks from the date that bid is awarded..

### 1.1 QUALITY ASSURANCE

- A. Supplier shall at the request of purchasing, provide detailed product data and descriptive literature including dimensions, weight, headloss, pressure rating, materials of construction and cross sectional drawings clearly illustrating the individual components.

### 2.0 PRODUCT

#### Rubber Flapper Check Valve

- A. The valve shall be rated for 250 PSI, have integral ANSI Class 125/150 flanged connections and employ only one (1) moving parts – the flexible disc. The body shall have a “full waterway” with a flow area not less than the nominal pipe area through the valve. To minimize closure time, the valve shall seat on a 45 degree angle.
- B. The cover shall be removable and allow removal of the flexible disc without removing the valve from the line. The cover shall be of a “domed” shape to facilitate self-cleaning. There shall be a threaded port with pipe plug to permit installation of a visual or electrical position indicator. A mechanical position indicator shall also be provided for a visual indication of the disc position.
- C. The flexible disc shall be one piece and precision molded with alloy steel and nylon reinforcement and an integral O-ring style seat for drop tight seating at low pressure.
- D. The spring assist shall be one-piece construction formed with a large radius to allow smooth movement and provide rapid valve closure. The spring assist shall be secured to the cover using Type 316 screws and field replaceable without removing the valve from the line and or the need for special tools.

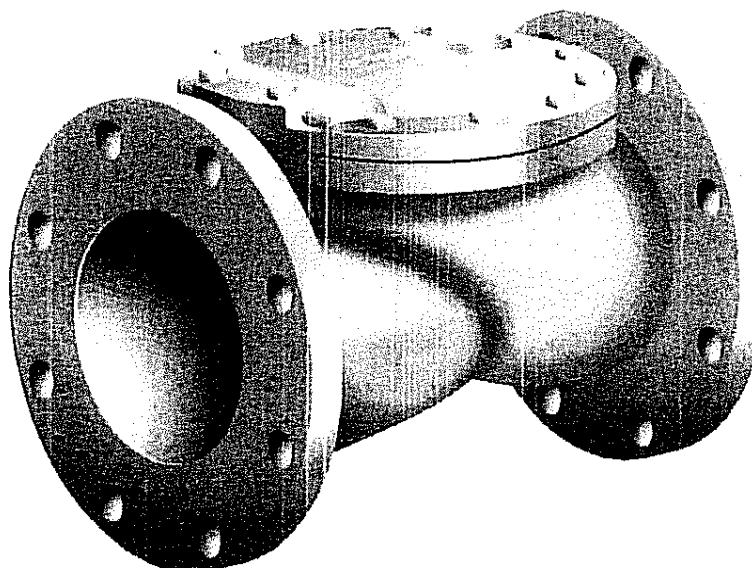
### 2.1 MATERIALS

- A. Valve body and cover shall be made from ductile iron per ASTM A536 Grade 65-45-12.
- B. The flexible disc shall be made from Buna-N (NBR) rubber.
- C. The spring assist shall be made from type 316 stainless steel.
- D. The valve body and cover shall be factory coated internally and externally with 12-16 mill of fusion bonded epoxy. And be NSF-61 certified for contact with drinking water.

Golden Anderson®

# Rubber Flapper Swing Check Valve

Quiet Closing



Water or Sewage Service

Bulletin  
03-200RF-01

*GA Industries, LLC*

GA Industries, LLC  
A Zurn Company



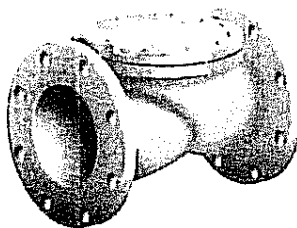
MANUFACTURERS OF  
GOLDEN ANDERSON® VALVES



AWWA C508

# RUBBER FLAPPER SWING CHECK VALVES

## QUIET CLOSING



WATER OR SEWAGE SERVICE

More than a century  
of valve design and  
manufacturing.

Consult factory for  
availability of options.

Working Pressure  
3" through 24" . . . 250 psi

Hydrostatic Test Pressure  
3" through 24" . . . 400 psi

## FEATURES

1. Meets or exceeds AWWA C508 design, materials of construction and testing requirements
2. Heavy-duty NSF-61 epoxy lined and coated ASTM A536 ductile iron body and cover
3. ANSI Class 125/150 flanges
4. 100% flow area, full waterway for low headloss
5. Rubber seated, zero leakage
6. Horizontal or vertical installation
7. No shaft packing or bearings to leak or wear out
8. Easily rubber lined for abrasion resistance
9. Optional visual and/or electrical position indication (4" and larger)
9. Available with internal spring assist for improved slam resistance (See Slaminator™ page 6)

Figure No. 200

## 1,000,000 CYCLE "PROOF OF DESIGN TEST"

## CROSS SECTION

GA Industries, Inc.  
1011 Peachtree East  
Chamblee, Georgia, PA, 30341-2440



July 15, 2024

GA Industries, Inc.  
1011 Peachtree East  
Chamblee, Georgia, PA, 30341-2440

Attn: Mr. R. E. Schreiber  
Project Manager

Subject: 12" Diameter Rubber Flapper Swing Check Valve Model PJC-120  
Valve Stem O-Ring Sealing  
Test Certificate Number  
1,000,000 Cycle Witness Test  
PJM&D Project No. 031101.00

Dear Mr. Schreiber:

We are submitting the attached report to study your requirements for installing the installation of 1,000,000 cycle opening and closing test valve due to the body of valve.

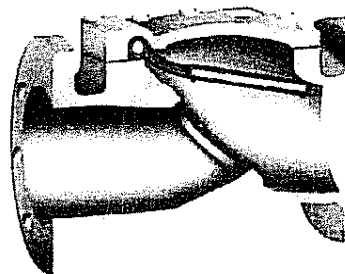
I have personally witnessed the tests and verified the valve tested to meet the requirements of the Fig. 304 12" Rubber Flapper Swing Check Valve.

We appreciate your continuing PJM&D Engineering Corporation for your Test Certificate. If you have any further questions or information needed for this test certificate, please do not hesitate to let me know.

PJM&D ENGINEERING CORPORATION

*[Signature]*  
Edward E. Reed, P.E.  
Vice President of Engineering

Enclosure  
Encl: 1



## Applications

Water Systems  
Raw Sewage  
Salt Water  
Chemicals  
Industrial Waste  
Light Slurries

Acid Lines  
Tailing Systems  
Scrubbers  
Brine  
Sea Water  
Corrosive Service

Figure 200BF Rubber Flapper Check Valve with Backflow Device

## GENERAL DIMENSIONS and LIST OF MATERIALS

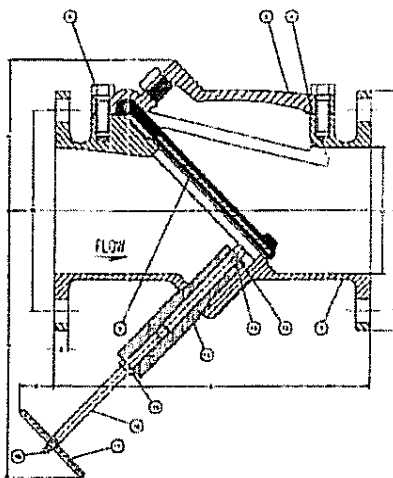


Figure 200BF available with visual and/or electrical position indicator, consult factory for information.

Figure No. 200BF

Figure No. 200BF

1. To Backflush a Clogged Pump
2. To Prime a Pump
3. To Drain System

### GENERAL DIMENSIONS (Flanges Per ANSI Class 125/150)

Valve Size	2"	2-1/2"	3"	4"	6"	8"	10"	12"	14"	16"	18"	20"	24"
A	8	8-1/2	9-1/2	11-1/2	15	19-1/2	24-1/2	27-1/2	31	32	36	40	48
B	4-3/4	5-1/2	6	7-1/2	9-1/2	11-3/4	14-1/4	17	18-3/4	21-1/4	22-3/4	25	28-1/2
C	6	7	7-1/2	9	11	13-1/2	16	19	21	23-1/2	25	27-1/2	32
D	5/8	11/16	3/4	15/16	1	1-1/8	1-3/16	1-1/4	1-3/8	1-7/16	1-9/16	1-11/16	1-7/8
E	2	2-1/2	3	4	5	8	10	12	14	16	18	20	24
F	3-3/8	3-3/8	5-1/8	5-3/4	6-7/8	8-3/8	10-3/4	12-1/2	13	14-1/4	15-1/4	16-7/8	19-1/4
J	7	7	8	8	13	17	20	23	27	31	34	38	35
K	0	0	0	2	2	3	4	4	4	5	6	6	7
Weight	20	33	38	69	125	230	377	615	735	1040	1550	1850	2500

Dimensions in inches, weight in pounds.

### LIST OF STANDARD MATERIALS

Part Number	Part Name	Standard Material
1	Body	Ductile Iron, ASTM A536 Grade 65-45-12*
2	Cover	Ductile Iron, ASTM A536 Grade 65-45-12*
3	Flexible Disc	Buna-N Rubber, Nylon and Steel Reinforced
4	Cover Gasket	Buna-N Rubber
5	Cover Bolts	Steel, ASTM A307
12	Rod Wiper	Urethane
13	Rod Seal	Buna-N Rubber
14	Backflow Tube	Brass
15	Backflow Jam Nut	Brass
16	Backflow Rod	Stainless Steel, Type 18-8
17	Backflow Handle	Stainless Steel, Type 18-8
18	Setscrew	Stainless Steel, Type 18-8

\* Lined and Coated with NSF-61 Certified Amerlok 400 Epoxy