



CENTRALBIDDING
FROM CENTRAL AUCTION HOUSE

5000112536 HANDICAP LAVATORY, FOUNTAIN AND FAUCET
Jefferson Parish Government

Project documents obtained from www.CentralBidding.com

25-Feb-2015 01:49:09 PM

DATE: 2/25/2015

INVITATION TO BID
THIS IS NOT AN ORDER

Page: 1

BID NO.: 50-00112536

JEFFERSON PARISH

PURCHASING DEPARTMENT
P.O. BOX 9
GRETN, LA. 70054-0009
504-364-2678

VENDOR: 27118 BLANK BID COPY VENDOR

BUYER: DMEVANS

Bids will be received until 11:00 AM, 3/02/2015 via fax: 504-364-2693 or via online at www.jeffparish.net

All bids submitted are subject to these instructions and general conditions and any special conditions and specifications contained herein, all of which are made part of this bid proposal reference. By submitting a bid, vendor agrees to comply with all provisions of Louisiana Law, as well compliance with the Jefferson Parish Code of Ordinances, Louisiana Code of Ethics, applicable Jefferson Parish ethical standards and Jefferson Parish Resolution No. 113646 and/or Resolution No. 113647. A copy of these resolutions may be obtained from the Office of the Parish Clerk, Suite 6700, Jefferson Parish General Government Building, 200 Derbigny Street, Gretna, LA 70053. You may also obtain a copy by visiting the Purchasing Department webpage at www.purchasing.jeffparish.net and clicking on On-line forms.

As per LSA-RS 47:301 et seq., all governmental bodies are excluded from payment of sales taxes to any Louisiana taxing body. Quotations shall be based on F.O.B. Agency warehouse or jobsite, anywhere within the Parish as designated by the Purchasing Department. JEFFERSON PARISH WILL ACCEPT ONE BID ONLY FROM EACH VENDOR. Items bid must meet specifications. JEFFERSON PARISH will accept one price for each item unless otherwise indicated. Two or more prices for one item will result in bid rejection. Bidders are required to complete, sign and return the bid form and/or complete and return the associated line item pricing forms as indicated. The price quoted for work shall be stated in figures. In the event there is a difference in unit prices and totals, the unit prices shall prevail.

JEFFERSON PARISH reserves the right to award contracts or place orders on a lump sum or individual item basis, or such combination, as shall in its judgment be in the best interest of JEFFERSON PARISH. Every contract or order shall be awarded to the LOWEST RESPONSIVE and RESPONSIBLE BIDDER, taking into consideration the CONFORMITY WITH THE SPECIFICATIONS and the DELIVERY AND/OR COMPLETION DATE

JEFFERSON PARISH reserves the right to cancel all or any part of an order if not shipped promptly. No charges will be allowed for parking or cartage unless specified in the quotation. The order must not be filled at a higher price than quoted. JEFFERSON PARISH reserves the right to cancel at any time and for any reason by issuing a THIRTY (30) day written notice to the contractor.

JEFFERSON PARISH requires all products to be new (current) and all work must be performed according to standard practices for the project. Unless otherwise specified, no aftermarket parts will be accepted. Unless otherwise specified, all workmanship and materials must have at least one (1) year guaranty, in writing, from the date of delivery and/or acceptance of the project. Any deviations or alterations from the specifications must be indicated and/or supporting documentation supplied with bid submission.

If this bid requires a pre-bid conference (see Additional Requirements section), bidders are advised that such conference will be held to allow bidders the opportunity to identify any discrepancies in the bid specifications and seek further clarification regarding instructions. The Purchasing Department will issue a written response to bidders' questions in the form of an Addendum.

All formal Addenda require written acknowledgment on the bid form by the bidder. Failure to acknowledge an Addendum on the bid form shall cause the bid to be rejected; JEFFERSON PARISH reserves the right to award bid to next lowest responsive and responsible bidder in this event.

USE OF BRAND NAMES AND STOCK NUMBERS: Where brand names and stock numbers are specified, it is for the purpose of establishing certain minimum standards of quality. Bids may be submitted for products of equal quality, provided brand names and stock numbers are specified. Complete product data may be required prior to award.

Quantities listed are for bidding purposes only. Actual requirements may be more or less than quantities listed.

Bidders are not to exclude from participation in, deny the benefits of, or subject to discrimination under any program or activity, any person in the United States on the grounds of race, color, national origin, or sex; nor discriminate on the basis of age under the Age Discrimination Act of 1975, or with respect to an otherwise qualified handicapped individual as provided in Section 504 of the Rehabilitation Act of 1973, or on the basis of religion, except that any exemption from such prohibition against discrimination on the basis of religion as provided in the Civil Rights Act of 1964, or Title VI and VII of the Act of April 11, 1968, shall also apply. This assurance includes compliance with the administrative requirements of the Revenue Sharing final handicapped discrimination provisions contained in Section 51.55 (c), (d), (e), and (k)(5) of the Regulations. New construction or renovation projects must comply with Section 504 of the 1973 Rehabilitation Act, as amended, in accordance with the American National Standard Institute's specifications (ANSI A1 17.1-1961).

INSTRUCTIONS FOR BIDDERS AND GENERAL CONDITIONS

IN ACCORDANCE WITH STATE REGULATIONS JEFFERSON PARISH OFFERS ELECTRONIC PROCUREMENT TO ALL VENDORS

This Electronic Procurement System allows vendors the convenience of reviewing and submitting bids online. This is a secure site and authorized personnel have limited read access only.

Please visit the Purchasing Department webpage at <http://purchasing.jeffparish.net> to register and review Jefferson Parish solicitations.

ADDITIONAL REQUIREMENTS FOR THIS BID

PLEASE MATCH THE NUMBERS PRINTED IN THIS BOX WITH THE CORRESPONDING INSTRUCTIONS BELOW.

13

1. All bidders must attend the pre-bid conference in relation to this bid; attendance is mandatory. Failure to attend will prohibit a company from submitting a bid. Vendors are hereby noticed that any vendor arriving after the mandatory pre-bid conference begins will not be allowed to sign in as evidence of attendance.
2. Attendance to this pre-bid conference is optional. However, failure to attend the pre-bid conference shall not relieve the bidder of responsibility for information discussed at the conference. Furthermore, failure to attend the pre-bid conference and inspection does not relieve the successful bidder from the necessity of furnishing materials or performing any work that may be required to complete the work in accordance with the specification with no additional cost to the owner.
3. Contractor must hold current applicable JEFFERSON PARISH licenses with the Department of Inspection and Code Enforcement. Contractor shall obtain any and all permits required by the JEFFERSON PARISH Department of Inspection and Code Enforcement. The contractor shall be responsible for the payment of these permits. All permits must be obtained prior to the start of the project. Contractor must also hold any and all applicable Federal and State licenses. Contractor shall be responsible for the payment of these permits and shall obtain them prior to the start of the project.
4. A LA State Contractor's License will be required in accordance with LSA R.S. 37-2150 et. seq. and such license number will be shown on the outside of the bid envelope. Failure to comply will cause the bid to be rejected. Additionally if submitting the bid electronically, then the license number must be entered in the appropriate field in the Electronic Procurement system. Failure to comply will cause the bid to be rejected.
5. It is the bidder's responsibility to visit the job site and evaluate the job before submitting a bid.
6. Job site must be clean and free of all litter and debris daily and upon completion of the contract. Passageways must be kept clean and free of material, equipment, and debris at all times. Flammable material must be removed from the job site daily because storage will not be permitted on the premises. Precautions must be exercised at all times to safeguard the welfare of JEFFERSON PARISH and the general public.

INSTRUCTIONS FOR BIDDERS AND GENERAL CONDITIONS

7. **PUBLIC WORKS BIDS:** All awards for public works in excess of \$5,000.00 will be reduced to a formal contract which shall be recorded at the contractor's expense with the Clerk of Court and Ex-Officio Recorder of Mortgages for the Parish of Jefferson. A price list of recordation costs may be obtained from the Clerk of Court and Ex-Officio Recorder of Mortgages for the Parish of Jefferson. All awards in excess of \$25,000.00 will require both a performance and a payment bond. Unless otherwise stated in the bid specifications, the performance bond requirements shall be 100% of the contract price. Unless otherwise state in the bid specifications, the payment bond requirements shall be 100% of the contract price. Both bonds shall be supplied at the signing of the contract.
8. **NON-PUBLIC WORKS BIDS:** A performance bond will be required for this bid. The amount of the bond will be 100% of the contract price unless otherwise indicated in the specifications. The performance bond shall be supplied at the signing of the contract.
9. **NON-PUBLIC WORKS BIDS:** A payment bond will be required for this bid. The amount of the bond will be 100% of the contract price unless otherwise indicated in the specifications. The payment bond shall be supplied at the signing of the contract.
10. Unless otherwise stated in the bid specifications, the successful bidder will be required to procure standard insurance policies evidencing Parish-mandated insurance requirements as indicted on the attached sheet. The current certificate of insurance must be submitted by low bidder within 10 days after bid opening to the Purchasing Department. Failure to comply will cause bid to be rejected. JEFFERSON PARISH reserves the right to award bid to the next lowest responsive and responsible bidder in this event.
11. A bid bond will be required with bid submission in the amount of 5% of the total bid, unless otherwise stated in the bid specifications. Acceptable forms shall be limited to cashier's check, certified check, or surety bid bond. If submitting a bid online, vendors must submit an electronic bid bond through the respective online clearinghouse bond management system(s) as indicated in the electronic bid Solicitation on Central Auction House. No scanned paper copies of any bid bond will be accepted as part of the electronic bid submission.
12. This is a requirements contract to be provided on an as needed basis. JEFFERSON PARISH makes no representations or warranties with regard to minimum guaranteed quantities unless otherwise stated in the bid specifications.
13. Freight charges should be included in total cost when quoting. If not quoted FOB DELIVERED, freight must be quoted as a separate item. Bid may be rejected if not quoted FOB DELIVERED or if freight charges are not indicated on bid form.
14. **PUBLIC WORKS BIDS - Completed, Signed and Properly Notarized Affidavits (in Original Format) required;** Non-Conviction Affidavit, Non-Collusion Affidavit, Campaign Contribution Affidavit and E-Verify Affidavit must be completed, signed, notarized and submitted by low bidder within 10 days after bid opening to the Purchasing Department on all solicitations for construction, alteration or demolition of public building or project, including but not limited to requirements found in LSA-RS 38:2212.9; LSA-RS 38:2212.10; LSA-RS 38:2224; Code of Ordinances, Jefferson Parish, Louisiana, Sec 2-923.1. Failure to comply will cause bid to be rejected; the Parish reserves the right to award bid to the next lowest responsive and responsible bidder in this event. For the convenience of vendors, all affidavits have been combined into one form entitled PUBLIC WORKS BID AFFIDAVIT. This affidavit must be submitted in its original format for the bid to be considered responsive.
15. **NON PUBLIC WORK BIDS - Completed, Signed and Properly Notarized Affidavits (in Original Format) required;** Non-Collusion Affidavit, and Campaign Contribution Affidavit must be completed, signed, notarized and submitted by low bidder with bid submission or within 10 days after bid opening to the Purchasing Department. See LSA-RS 38:2212.10; LSA-RS 38:2224; Code of Ordinances, Jefferson Parish, Louisiana, Sec 2-923.1 Failure to comply will cause bid to be rejected; the Parish reserves the right to award bid to the next lowest responsive and responsible bidder in this event. For the convenience of vendors, all affidavits have been combined into one form entitled NON PUBLIC WORKS BID AFFIDAVIT. This affidavit must be submitted in its original format for the bid to be considered responsive.

It shall be the duty of every parish officer, employee, department, agency, special district, board, and commission; and the duty of every contractor, subcontractor, and licensee of the parish, and the duty of every applicant for certification of eligibility for a parish contract or program, to cooperate with the Inspector General in any investigation, audit, inspection, performance review, or hearing pursuant to Jefferson Parish Code of Ordinances Section 2-155.10(19). By submitting a bid, vendor acknowledges this and will abide by all provisions of the referenced Jefferson Parish Code of Ordinances.

DATE: 2/25/2015

INVITATION TO BID
THIS IS NOT AN ORDER

Page: 4

BID NO.: 50-00112536

JEFFERSON PARISH

PURCHASING DEPARTMENT
P.O. BOX 9
GRETN, LA. 70054-0009
504-364-2678

VENDOR: 27118 BLANK BID COPY VENDOR

BUYER: DMEVANS

Bids will be received until 11:00 AM, 3/02/2015 via fax: 504-364-2693 or via online at www.jeffparish.net

As per LSA-RS 47:301 et seq., all governmental bodies are excluded from payment of sales taxes to any Louisiana taxing body. Quotations shall be based on F.O.B. Agency warehouse or jobsite, anywhere within the Parish as designated by the Purchasing Department.

JEFFERSON PARISH reserves the right to cancel all or any part of an order if not shipped promptly. No charges will be allowed for parking or cartage unless specified in quotation. The order must not be filled at a higher price than quoted. JEFFERSON PARISH reserves the right to cancel at any time and for any reason by issuing a THIRTY (30) day written notice to the contractor.

JEFFERSON PARISH is expecting all products to be new and all work is to be done in a workman-like manner, according to standard practices. Any deviations or alterations from the specifications must be indicated and backup documentation supplied with your quotation.

DELIVERY: FOB JEFFERSON PARISH

75 days after receipt
of approved submittals

INDICATE DELIVERY DATE ON EQUIPMENT AND SUPPLIES

INDICATE STARTING TIME (IN DAYS) FOR CONSTRUCTION WORK

INDICATE COMPLETION TIME (IN DAYS) FOR CONSTRUCTION WORK

In the event that addenda are issued with this bid, bidders MUST acknowledge all addenda on the bid form. Bidder must acknowledge receipt of an addendum on the bid form as indicated. Failure to acknowledge any addendum on the bid form will result in bid rejection.

Acknowledge Receipt of Addenda: NUMBER: 1

NUMBER: _____

NUMBER: _____

NUMBER: _____

LOUISIANA CONTRACTOR'S LICENSE NO.: (if applicable) _____

***** ALL BIDDERS MUST COMPLETE SECTION BELOW *****

FIRM NAME:
TECH MECH SUPPLY LLC

SIGNATURE:
(Must be signed here)

TITLE:
OWNER

PRINT OR TYPE NAME:
JAY N. JOSEPH

ADDRESS:
PO BOX 5050

CITY, STATE:
PITTSBURGH, PA

ZIP:
15213-1851

TELEPHONE:
(412) 687-1521

FAX:
(412) 682-5360

EMAIL ADDRESS:
tech.mech@netzero.com

TOTAL PRICE OF ALL BID ITEMS: \$ 4277.50

INVITATION TO BID FROM JEFFERSON PARISH - continued

BID NO.: 50-00112536

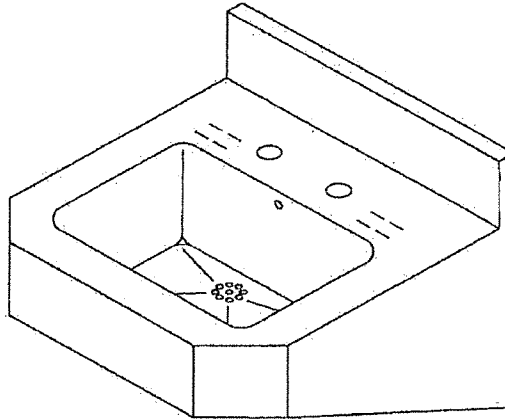
SEALED BID

ITEM NUMBER	QUANTITY	U/M	DESCRIPTION OF ARTICLES	UNIT PRICE QUOTED	TOTALS
1	3.00	EA	HANDICAP LAVATOR, FAUCET AND FOUNTAIN		
			0010 Handicap Lavatory "Willoughby" commercial exposed trap Item number ES-1015-HC or equal Frank	\$ 364.00	\$ 1092.00
2	3.00	EA	0020 Lavatory trap enclosure or equal	\$.00	\$.00
			(included with item 1) Item number TE		
3	3.00	EA	0030 "Chicago" hot and cold water sink faucet 2.2 GPM (8.3L/min) aerator. 2 3/8	\$ 126.50	\$ 379.50
			inch lever handles, Quatum compression operating cartridge or equal Item number 802-ABCP		
4	1.00	EA	0040 "Willoughby" 3 station outdoor drinking fountain item number WODF-3HC-CHD/PET	\$ 2806.00	\$ 2806.00
			or equal PLEASE SUBMIT A COLOR CHART line 1: quoting Willoughby ES-1015-HC-TE line 2: included with line 1 line 3: quoting T&S Brass B-0890-177F line 4: quoting Willoughby WODF-3HC-CHD/PET color to be determined		

Willoughby Industries - Commercial Ware



ES-1015-HC Handicap Lavatory-Commercial Exposed Trap



Recommended Specifications

Handicap lavatory shall be Willoughby Model No. **ES-1015-HC**.

Fixture shall be fabricated from 16 gauge, type 304 stainless steel. The construction shall be all-welded, with exposed stainless surfaces polished to a #4 satin finish.

Standard lavatory shall include: rectangular shaped bowl, 14 1/2" x 9 1/2" x 5 1/2" deep, fast drain with overflow vent, 4" long 1 1/2" tailpiece, and self-draining soap dishes.

Anchoring shall be from the front with z-clip and anchoring holes provided. Anchoring hardware by others. Unit requires no chase area for installation or maintenance.

This product is designed to comply with the Americans with Disabilities Act (A.D.A.) and Texas Accessibility Standards (T.A.S.).

Visit our website at <http://www.willoughby-ind.com>

2210 West Morris Street • P.O. Box 21217 • Indianapolis, IN 46221
(317) 638-2381 • Fax: (317) 638-6110 • (800) 428-4065

© Rev. 6/2007

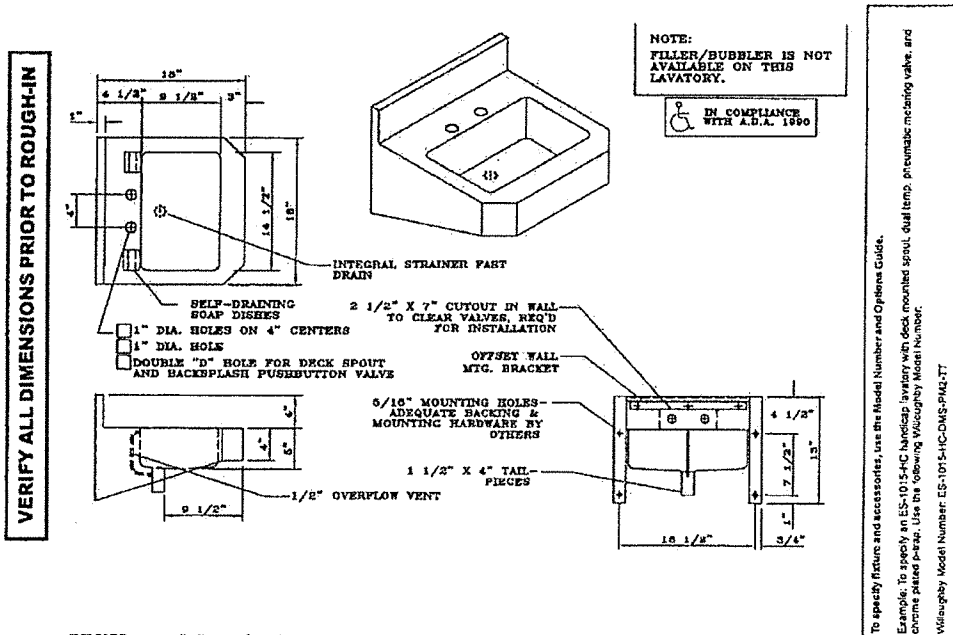
10-3

MODEL NUMBER AND OPTIONS:

- 1.) Lavatory Type:
- ☐ ES
- 2.) Base Model Number:
- ☐ 1015-HC 18" Handicap Lavatory
- 3.) Spout Selection:
- ☐ DMS Deck Mounted Spout
- 4.) Valve Selection (must specify):
- ☐ NV No Valve (standard)
(Specify Hole Punching)
- ☐ Special Punching (Specify)
- ☐ (2) 1" Dia. Holes, 4" Centers
- ☐ (2) 1" Dia. Holes, 8" Centers
- ☐ (1) 1" Dia. Hole
- ☐ PS1 Single Temp. Pneu. Self-Closing
- ☐ PS2 Dual Temp. Pneu. Self-Closing
- ☐ PM1 Single Temp. Pneu. Metering
- ☐ PM2 Dual Temp. Pneu. Metering
- ☐ EL1 Single Temp. Electronic
- ☐ EL2 Dual Temp. Electronic
- 5.) Lavatory Waste:
- ☐ TE Trap Enclosure
- ☐ TT Chrome Plated P-Trap

Drawing Approved For Manufacturing By: _____ Date: _____ Company: _____

Wall Thickness: _____ Wall Type: _____



Willoughby Industries, Inc.

10-4

Willoughby reserves the right to make changes in design and dimensions without formal notice and without incurring obligation. Verify all dimensions and tolerances with factory prior to using for any purpose.

© Rev. 6/2007

MECHANICAL FAUCETS

802-ABCP

Manual Faucets



Product Type

Deck Mounted 4" Fixed Centers Hot and Cold Water Sink Faucet

Features & Specifications

- 4" Fixed Centers
- 2.2 GPM (8.3 L/min) Aerator
- 2-3/8" Vandal Proof Lever Handle
- Quatum Compression Operating Cartridge
- 1/2" NPSM Supply Inlets and Coupling Nut for 3/8" or 1/2" Flexible Riser
- 4" Center to Center Integral Cast Brass Spout
- ECAST® design provides durable brass construction with total lead content equal to or less than 0.25% by weighted average
- CFNow! Item Ships in 5 Days

Performance Specification

- Rated Operating Pressure: 20-125 PSI
- Rated Operating Temperature: 40-140°F

Warranty

- Lifetime Limited Faucet Warranty
- 5-Year Limited Cartridge Warranty
- 1-Year Limited Finish Warranty

Codes & Standards

- ASME A112.18.1/CSA B125.1
- Certified to NSF/ANSI 61, Section 9 by CSA
- California Health and Safety Code 116875 (AB1953-2006)
- Vermont Bill S.152
- NSF/ANSI 372 Low Lead Content
- ADA ANSI/ICC A117.1

Job Name _____

Item Number _____

Section/Tag _____

Model Specified _____

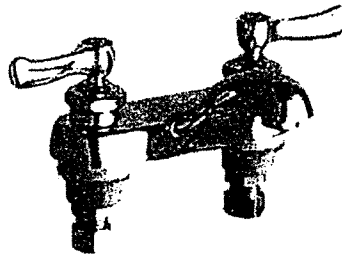
Architect _____

Engineer _____

Contractor _____

☐ Submitted as Shown ☐ Submitted with Variations

Date _____



ECAST

ECAST products are intended for installation where state laws and local codes mandate lead content levels or in any location where lead content is a concern.



Last Revision: 07/25/2011 • Date Printed: 01/13/2015 • Product specifications subject to change without notice

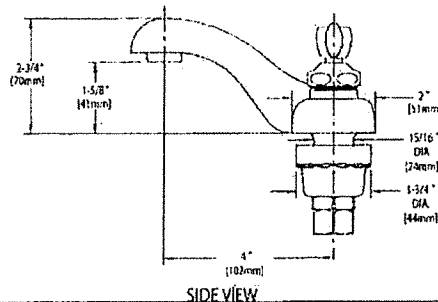
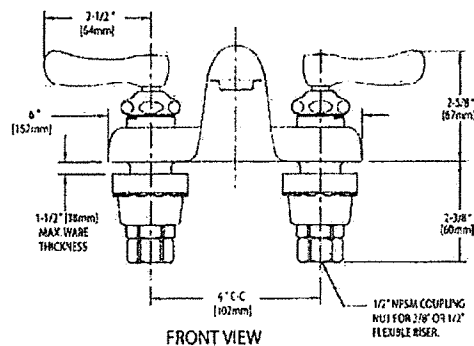
2100 South Clearwater Drive
Des Plaines, IL
P: 847/603-5000
F: 847/603-5454
Technical: 800/TEC-TRUE
www.chicagofaucets.com

802-ABCP Manual Faucets



Architect/Engineer Specification

Chicago Faucets No. 802-ABCP, Deck Mounted 4" Fixed Centers Hot and Cold Water Sink Faucet, Chrome Plated solid brass construction. 4" Center to Center Integral Cast Brass Spout. 2.2 GPM (8.3 L/min) Pressure Compensating Softflo Aerator. 2-3/8" Metal Vandal Proof Lever handle(s) with Eight Point Tapered Broach and Blue and Red Buttons. Quantum™ rebuildable compression cartridge, opens and closes 90°, closes with water pressure, features square tapered stem. 1/2" NPSM Supply Inlets and Coupling Nut for 3/8" or 1/2" Flexible Riser. ECAST® construction with less than 0.25% lead content by weighted average. Secondary Control Valve: 4" Center to Center Integral Cast Brass Spout. This product meets ADA ANSI/ICC A117.1 requirements and is tested and certified to industry standards: ASME A112.18.1/CSA B125.1, Certified to NSF/ANSI 61, Section 9 by CSA, California Health and Safety Code 116875 (AB1953-2006), Vermont Bill S.152, and NSF/ANSI 372 Low Lead Content.



Operation and Maintenance

Installation should be in accordance with local plumbing codes. Flush all pipes thoroughly before installation. After installation, remove spout outlet or flow control and flush faucet thoroughly to clear any debris. Care should be taken when cleaning the product. Do not use abrasive cleaners, chemicals or solvents as they can result in surface damage. Use mild soap and warm water for cleaning and protecting the life of Chicago Faucet products. For specific operation and maintenance refer to the installation instructions and repair parts documents that are located at www.chicagofaucets.com.

Chicago Faucets, member of the Geberit Group, is the leading brand of commercial faucets and fittings in the United States, offering a complete range of products for schools, laboratories, hospitals, office buildings, food service, airports and sport facilities. Call 1.800.TECTRUE or 1.847.803.5000 Option 1 for installation or other technical assistance.



2100 South Clearwater Drive
Des Plaines, IL
P: 847/803-5000
F: 847/803-5454
Technical: 800/TEC-TRUE
www.chicagofaucets.com

Last Revision: 07/25/2011 • Date Printed: 01/13/2015 • Product specifications subject to change without notice

Willoughby Industries - Parks & Recreation

WODF-3 Series Outdoor Drinking Fountain



Standard Features

- * A.D.A. and Child compliant
- * Standard heavy duty type 304 stainless steel 10" sched. 10 main column and 7 ga. flange
- * Optional marine-grade type 316 stainless steel for installations near salt water
- * High polished stainless steel bowl
- * Solid stainless steel, anti-rotation bubbler
- * Serviceable mesh strainer on inlet water supply
- * Heavy-duty main column access panel
- * Resistant to sunlight, heat and vandalism
- * Stainless Steel Adjustable Pushbutton

Recommended Specifications

Model WODF-3 outdoor drinking fountain is a triple-level, vandal resistant drinking fountain with a 304 stainless steel 10" sched. 10 body column and 7 ga. flange.

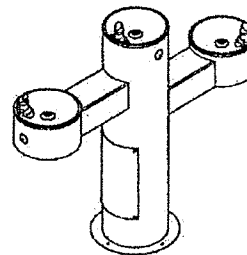
Fountain shall have high-polished, 18 gauge stainless steel bowl with anti-rotation, anti-squirt, solid stainless steel bubblers. Bubblers shall be activated by a pedestal mounted solid stainless steel pushbutton assembly which controls a lead-free, self-closing valve.

Pushbutton operation shall require less than 5 lbs. of force. Adjustable pushbutton used to ensure adequate flow without being wasteful. WODF-3 fountain shall be lead-free, adhering to ANSI/NSF 61, Section 9, ANSI A117.1 and American Disabilities Act of 2010 requirements.

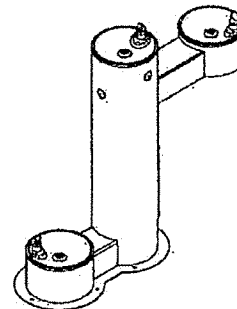
To specify fixture, bowl height, and color, use the Model Number and Options Guide.

Example: To specify a WODF-3 outdoor drinking fountain with adult A.D.A. height bowl, pet height bowl, and bare stainless color,

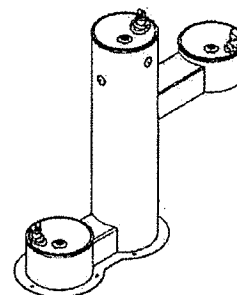
Use the following Willoughby Model Number: WODF-3-RC-PET-S



WODF-3 ADA-CHILD



WODF-3 ADA PET



WODF-3 CHILD-PET



MADE IN THE U.S.A.

visit our website at www.willoughby-ind.com
5105 West 78th Street • Indianapolis, IN 46268
(317) 875-0830 • Fax: (317) 875-0837 • (800) 428-4065

Willoughby Industries - Parks & Recreation

WODF-3 Series Outdoor Drinking Fountain



Standard Features

- * A.D.A. and Child compliant
- * Standard heavy duty type 304 stainless steel 10" sched. 10 main column and 7 ga. flange
- * Optional marine-grade type 316 stainless steel for installations near salt water
- * High polished stainless steel bowl
- * Solid stainless steel, anti-rotation bubbler
- * Serviceable mesh strainer on inlet water supply
- * Heavy-duty main column access panel
- * Resistant to sunlight, heat and vandalism
- * Stainless Steel Adjustable Pushbutton

Recommended Specifications

Model WODF-3 outdoor drinking fountain is a triple-level, vandal resistant drinking fountain with a 304 stainless steel 10" sched. 10 body column and 7 ga. flange.

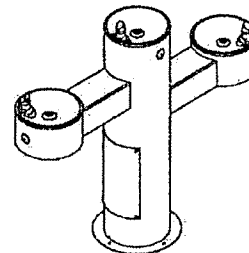
Fountain shall have high-polished, 18 gauge stainless steel bowl with anti-rotation, anti-squirt, solid stainless steel bubblers. Bubblers shall be activated by a pedestal mounted solid stainless steel pushbutton assembly which controls a lead-free, self-closing valve.

Pushbutton operation shall require less than 5 lbs. of force. Adjustable pushbutton used to ensure adequate flow without being wasteful. WODF-3 fountain shall be lead-free, adhering to ANSI/NSF 61, Section 9, ANSI A117.1 and American Disabilities Act of 2010 requirements.

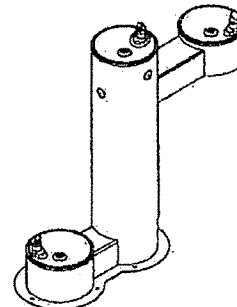
To specify fixture, bowl height, and color, use the Model Number and Options Guide.

Example: To specify a WODF-3 outdoor drinking fountain with adult A.D.A height bowl, pet height bowl, and bare stainless color,

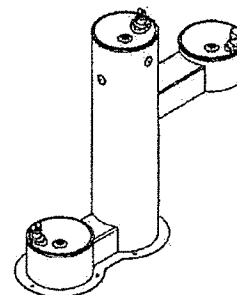
Use the following Willoughby Model Number: WODF-3-RC-PET-S



WODF-3 ADA-CHILD



WODF-3 ADA PET



WODF-3 CHILD-PET



visit our website at www.willoughby-ind.com
5105 West 78th Street • Indianapolis, IN 46268
(317) 875-0930 • Fax: (317) 875-0837 • (800) 428-4065

MODEL NUMBER AND OPTIONS:

1.) Outdoor Drinking Fountain Type:

☐ WODF-3 (three-bowl fountain)

2.) Bowl Height (other than main column bowl, select two):

☐ HC Adult A.D.A.

☐ CHD Child

☐ PET Pet

3.) Options:

☐ 316-3 316 Stainless Steel Body, Triple

☐ CAR-1 Surface Carrier, Single

☐ CAR-2 Surface Carrier, Double

☐ SOV Shut Off Valve

☐ SCV Seasonal Bowl Cover

☐ FRV-3 Freeze Resistant Valve System, Triple

☐ JF Jug Filler

☐ HBE Hose Bibb Exposed

☐ HBLD Recessed Hose Bibb W/Lock Door

☐ HBLD-SS Recessed Stainless Steel Hose Bibb W/Lock Door

☐ FW Foot Wash

4.) Colors (select one):

☐ S Bare Stainless - Beadblast Finish

☐ G Green

☐ R Red

☐ BL Blue

☐ O Orange

☐ V Violet

☐ Y Yellow

☐ BR Brown

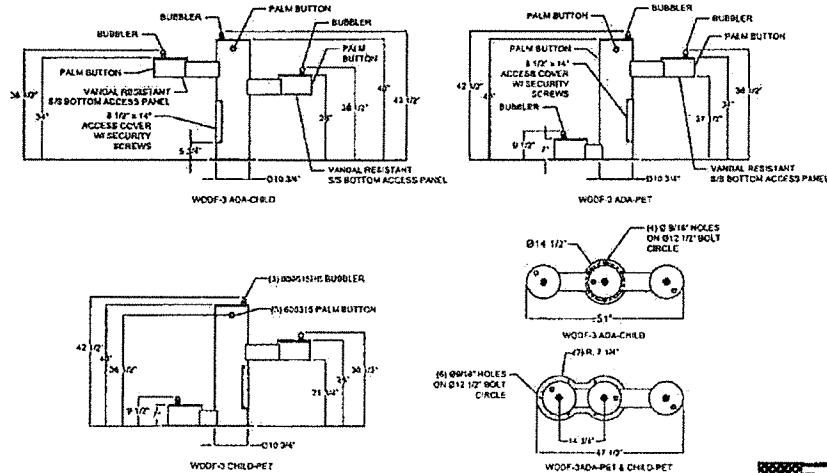
☐ BK Black

☐ BG Beige

☐ W White

Approved For Manufacturing By: _____ Date: _____ Company: _____
Wall Thickness: _____ Wall Type: _____

VERIFY ALL DIMENSIONS WITH FACTORY PRIOR TO ROUGH-IN
WILLAUGHBY RESERVES THE RIGHT TO MAKE CHANGES IN DESIGN AND
DIMENSIONS WITHOUT FORMAL NOTICE AND WITHOUT INCURRING OBLIGATION.



visit our website at www.willaughby-ind.com

5105 West 78th Street • Indianapolis, IN 46268

(317) 875-0830 • Fax: (317) 875-0837 • (800) 428-4065



MADE IN THE U.S.A.

© Rev 11/2014



CENTRALBIDDING
FROM CENTRAL AUCTION HOUSE

5000112536 HANDICAP LAVATORY, FOUNTAIN AND FAUCET
Jefferson Parish Government

Project documents obtained from www.CentralBidding.com

25-Feb-2015 01:49:06 PM



WWW.JEFFPARISH.NET

JOHN F. YOUNG, JR.
PARISH PRESIDENT

JEFFERSON PARISH

DEPARTMENT OF PURCHASING

BRENDA J. CAMPOS
DIRECTOR

February 25, 2015

ADDENDUM NO.1

Bid No.: 50-00112536

Bid Opening Date: February 26, 2015
Extended Bid Opening Date: March 02, 2015

For: HANDICAP LAVATORY, FAUCET AND FOUNTAIN

Clarification of Specifications and Shipping Address:

- Item 0040- please submit a color chart with the bid – color will be selected once awarded.
- Shipping address- 7437 Lapalco Blvd Marrero, La 70072 .

Sincerely,

A handwritten signature in black ink, appearing to read "Donna M Evans", is written over a horizontal line.

Donna M Evans, Buyer I
Jefferson Parish Purchasing Department

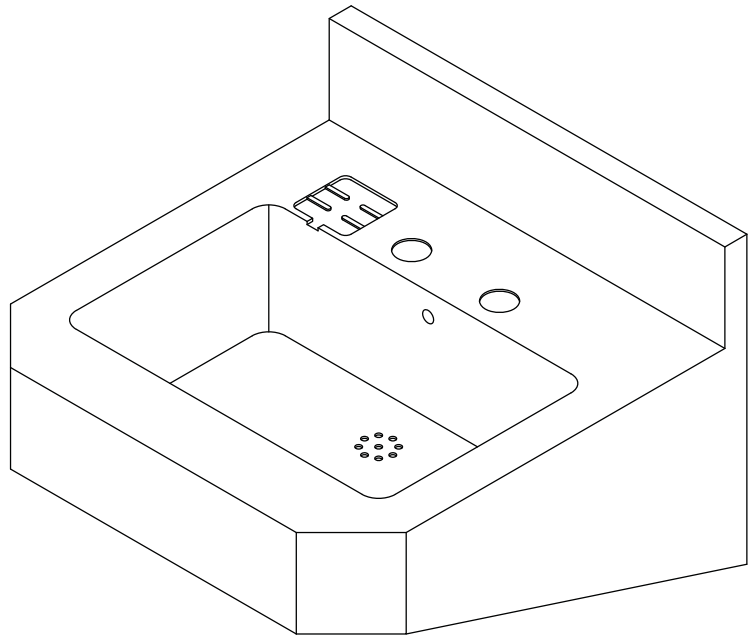
Bidders must acknowledge all addenda on the bid form. Bidder acknowledges receipt of this addendum on the bid form as indicated. Failure to do so will result in bid rejection.

This addendum is a part of the contract documents and modifies the original bidding documents and specifications. The contents of this addendum shall be included in the contract documents. Changes made by this addendum shall take precedence over the documents of earlier date.

Willoughby Industries - Commercial Ware



ES-1015-HC Handicap Lavatory-Commercial Exposed Trap



Recommended Specifications

Handicap lavatory shall be Willoughby Model No. **ES-1015-HC**.

Fixture shall be fabricated from 16 gauge, type 304 stainless steel. The construction is all-welded with exposed stainless surfaces polished to a #4 satin finish.

Standard lavatory shall include: rectangular shaped bowl, 14 1/2" x 9 1/2" x 5 1/2" deep, fast drain with overflow vent, 4" long 1 1/2" diameter tailpiece and self-draining soap dish.

Anchoring shall be from the front with 'z' clip and anchoring holes provided. Anchoring hardware by others. Unit requires no chase area for installation and maintenance.

This product is designed to comply with the Americans with Disabilities Act (A.D.A.) and Texas Accessibility Standards (T.A.S.).

TECH MECH SUPPLY LLC
PO BOX 5050
PITTSBURGH, PA 15206-0550
TEL: 412-687-1521 ; FAX: 412-682-5360
e-mail: tech.mech@netzero.com

MADE IN THE U.S.A.



visit our website at <http://www.willoughby-ind.com>

5105 West 78th Street • Indianapolis, IN. 46268
(317) 875-0830 • Fax: (317) 875-0837 • (800) 428-4065

MODEL NUMBER AND OPTIONS:

1.) Lavatory Type:

☒ ES

2.) Base Model Number:

☒ 1015-HC 18" Handicap Lavatory

3.) Spout Selection:

☐ DMS Deck Mounted Spout

☐ DMBPH Deck Mounted Hemispherical Filler/Bubbler

☐ PS1 Single Temp. Pneumatic Self-Closing

☐ PS2 Dual Temp. Pneumatic Self-Closing

☐ PM1 Single Temp. Pneumatic Metering

☐ PM2 Dual Temp. Pneumatic Metering

☐ EL1 Single Temp. Electronic

☐ EL2 Dual Temp. Electronic

☐ PBH Anti-Suicide Pushbutton(s)

5.) Lavatory Waste:

☒ TE Trap Enclosure (item 2)

☐ TT Chrome Plated 'P' Trap

4.) Valve Selection (must specify):

☒ NV No Valve (Standard)
(Specify Hole Punching)

☐ Special Punching (Specify)

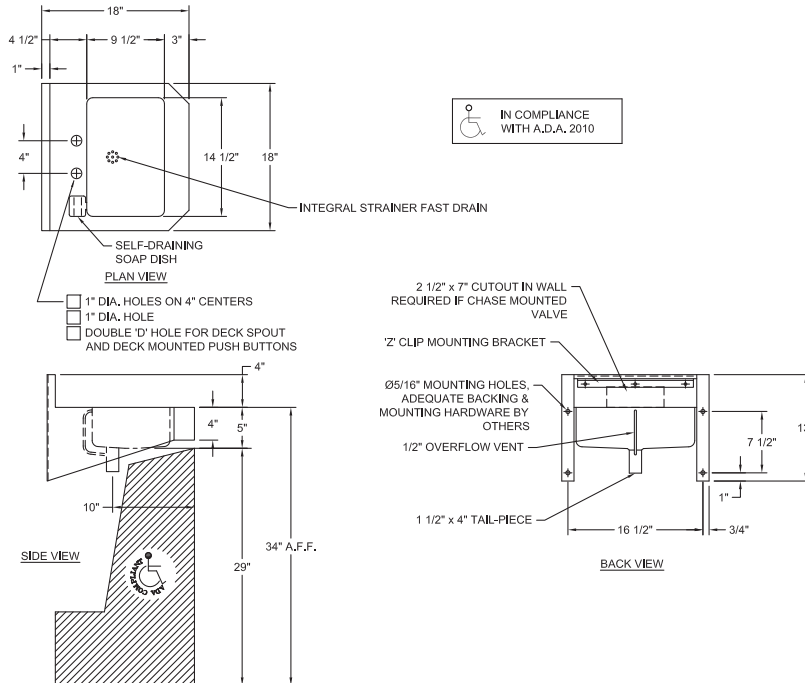
☐ (2) 1" Dia. Holes, 4" Centers

☐ (2) 1" Dia. Holes, 8" Centers

☐ (1) 1" Dia. Hole

Approved For Manufacturing By: _____ Date: _____ Company: _____
Wall Thickness: _____ Wall Type: _____

VERIFY ALL DIMENSIONS PRIOR TO ROUGH-IN



Willoughby Industries, Inc.

MADE IN THE U.S.A.



To specify fixture and accessories, use the Model Number and Options Guide.

Example: To specify an ES-1015-HC handicap lavatory with deck mounted spout, dual temp., pneumatic metering valve and chrome plated 'P' trap. Use the following Willoughby Model Number:

Willoughby Model Number: ES-1015-HC-DMS-PM2-TT



T&S BRASS AND BRONZE WORKS, INC.

2 SADDLEBACK COVE / P.O. BOX 1088 / TRAVELERS REST, SC 29690

PHONE 800-476-4103

FAX 864- 834-3518



REG.#A2601
ISO #9002

Model No.

B-0890-177F

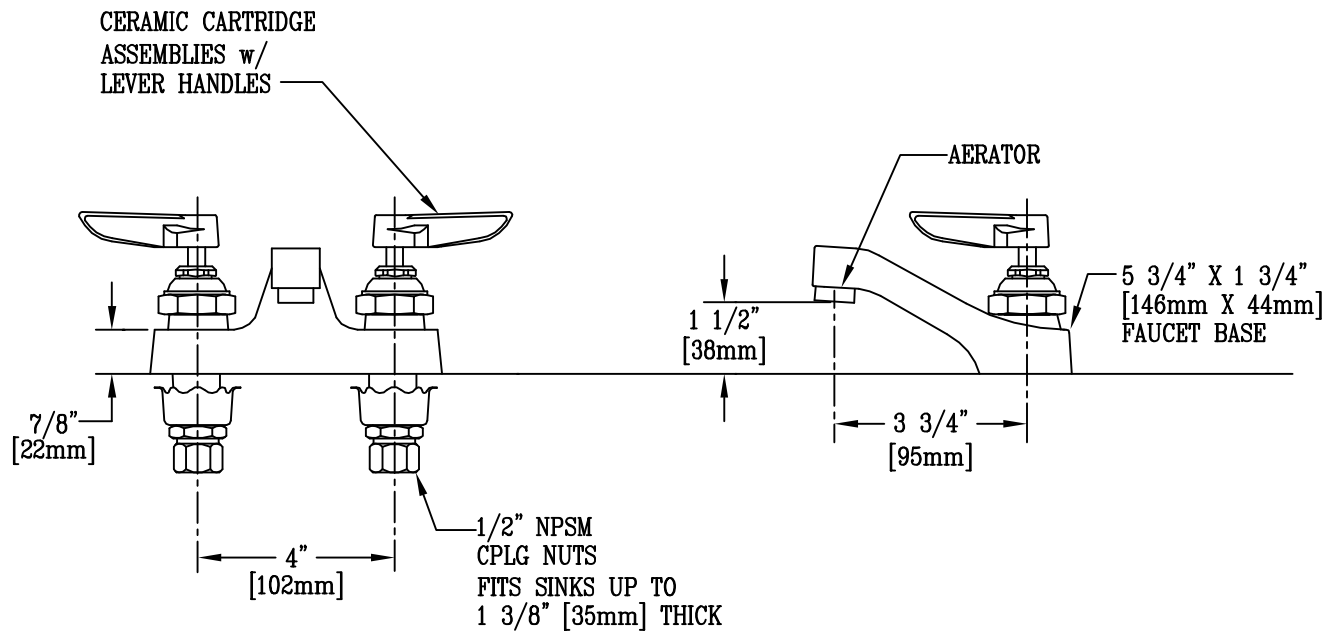
Item No.:

3

Job Name:

Architect/Engineer Approval:

Notes:



Product Description:

4" c/c COMMERCIAL MIXING FAUCET WITH LEVER HANDLES,
CERAMIC CARTRIDGES, & AERATOR OUTLET

Drawn:

WJS

Approved

MVW

Checked

JKD

Scale:

1 : 4

Date:

3/21/03



Manual Faucets

FOR COMPARISON PURPOSES ONLY

Product Type

Deck Mounted 4" Fixed Centers Hot and Cold Water Sink Faucet

Features & Specifications

- 4" Fixed Centers
- 2.2 GPM (8.3 L/min) Aerator
- 2-3/8" Vandal Proof Lever Handle
- Quatum Compression Operating Cartridge
- 1/2" NPSM Supply Inlets and Coupling Nut for 3/8" or 1/2" Flexible Riser
- 4" Center to Center Integral Cast Brass Spout
- ECAST® design provides durable brass construction with total lead content equal to or less than 0.25% by weighted average
- CFNow! Item Ships in 5 Days

Performance Specification

- Rated Operating Pressure: 20-125 PSI
- Rated Operating Temperature: 40-140°F

Warranty

- Lifetime Limited Faucet Warranty
- 5-Year Limited Cartridge Warranty
- 1-Year Limited Finish Warranty

Codes & Standards

- ASME A112.18.1/CSA B125.1
- Certified to NSF/ANSI 61, Section 9 by CSA
- California Health and Safety Code 116875 (AB1953-2006)
- Vermont Bill S.152
- NSF/ANSI 372 Low Lead Content
- ADA ANSI/ICC A117.1

Job Name _____

Item Number _____

Section/Tag _____

Model Specified _____

Architect _____

Engineer _____

Contractor _____

☐ Submitted as Shown ☐ Submitted with Variations

Date _____

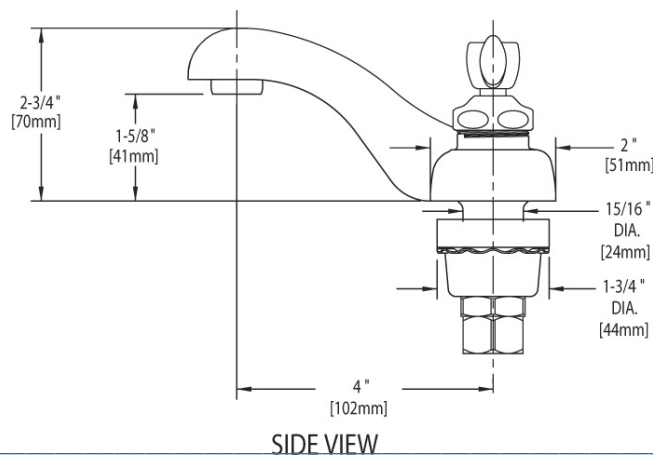
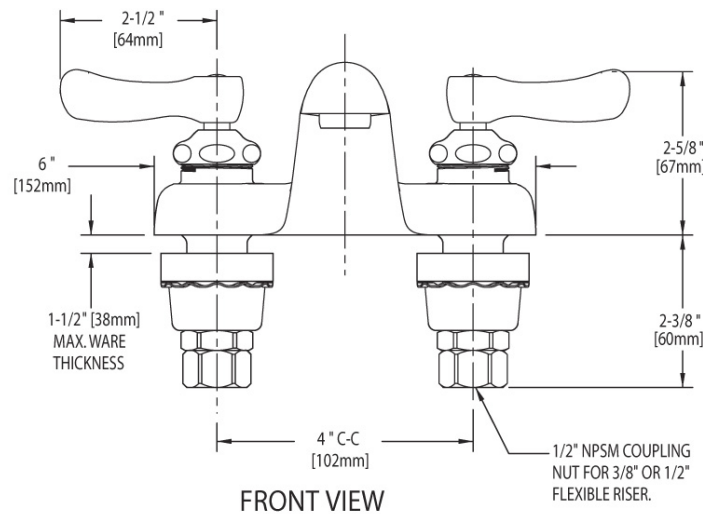


ECAST®

ECAST products are intended for installation where state laws and local codes mandate lead content levels or in any location where lead content is a concern.

Architect/Engineer Specification

Chicago Faucets No. 802-ABCP, Deck Mounted 4" Fixed Centers Hot and Cold Water Sink Faucet, Chrome Plated solid brass construction. 4" Center to Center Integral Cast Brass Spout. 2.2 GPM (8.3 L/min) Pressure Compensating Softflo Aerator. 2-3/8" Metal Vandal Proof Lever handle(s) with Eight Point Tapered Broach and Blue and Red Buttons. Quatern™ rebuildable compression cartridge, opens and closes 90°, closes with water pressure, features square tapered stem. 1/2" NPSM Supply Inlets and Coupling Nut for 3/8" or 1/2" Flexible Riser. ECAST® construction with less than 0.25% lead content by weighted average. Secondary Control Valve: 4" Center to Center Integral Cast Brass Spout. This product meets ADA ANSI/ICC A117.1 requirements and is tested and certified to industry standards: ASME A112.18.1/CSA B125.1, Certified to NSF/ANSI 61, Section 9 by CSA, California Health and Safety Code 116875 (AB1953-2006), Vermont Bill S.152, and NSF/ANSI 372 Low Lead Content.



Operation and Maintenance

Installation should be in accordance with local plumbing codes. Flush all pipes thoroughly before installation. After installation, remove spout outlet or flow control and flush faucet thoroughly to clear any debris. Care should be taken when cleaning the product. Do not use abrasive cleaners, chemicals or solvents as they can result in surface damage. Use mild soap and warm water for cleaning and protecting the life of Chicago Faucet products. For specific operation and maintenance refer to the installation instructions and repair parts documents that are located at www.chicagofaucets.com.

Chicago Faucets, member of the Geberit Group, is the leading brand of commercial faucets and fittings in the United States, offering a complete range of products for schools, laboratories, hospitals, office buildings, food service, airports and sport facilities. Call 1.800.TECTRUE or 1.847.803.5000 Option 1 for installation or other technical assistance.



Willoughby Industries - Parks & Recreation

WODF-3 Series Outdoor Drinking Fountain



Standard Features

- * A.D.A. and Child compliant
- * Standard heavy duty type 304 stainless steel 10" sched. 10 main column and 7 ga. flange
- * Optional marine-grade type 316 stainless steel for installations near salt water
- * High polished stainless steel bowl
- * Solid stainless steel, anti-rotation bubbler
- * Serviceable mesh strainer on inlet water supply
- * Heavy-duty main column access panel
- * Resistant to sunlight, heat and vandalism
- * Stainless Steel Adjustable Pushbutton

Recommended Specifications

Model **WODF-3** outdoor drinking fountain is a triple-level, vandal resistant drinking fountain with a 304 stainless steel 10" sched. 10 body column and 7 ga. flange.

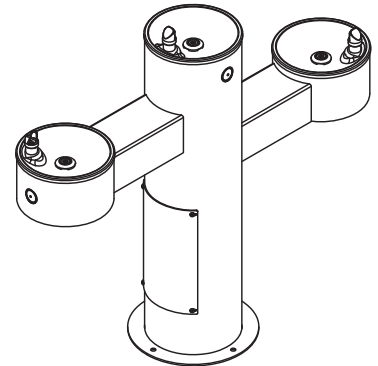
Fountain shall have high-polished, 18 gauge stainless steel bowl with anti-rotation, anti-squirt, solid stainless steel bubblers. Bubblers shall be activated by a pedestal mounted solid stainless steel pushbutton assembly which controls a lead-free, self-closing valve.

Pushbutton operation shall require less than 5 lbs. of force. Adjustable pushbutton used to ensure adequate flow without being wasteful. **WODF-3** fountain shall be lead-free, adhering to ANSI/NSF 61, Section 9, ANSIA117.1 and American Disabilities Act of 2010 requirements.

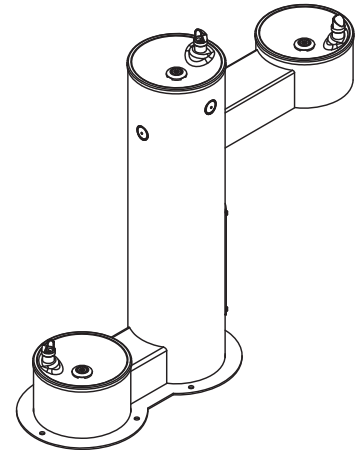
To specify fixture, bowl height, and color, use the Model Number and Options Guide.

Example: To specify a WODF-3 outdoor drinking fountain with adult A.D.A height bowl, pet height bowl, and bare stainless color,

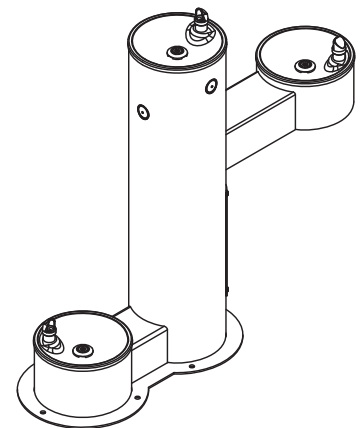
Use the following Willoughby Model Number: WODF-3-HC-PET-S



WODF-3 ADA-CHILD



WODF-3 ADA PET



WODF-3 CHILD-PET



MADE IN THE U.S.A.

visit our website at www.willoughby-ind.com
5105 West 78th Street • Indianapolis, IN 46268
(317) 875-0830 • Fax: (317) 875-0837 • (800) 428-4065

MODEL NUMBER AND OPTIONS:

1.) Outdoor Drinking Fountain Type:

☒ WODF-3 (three-bowl fountain)

2.) Bowl Height (other than main column bowl, select two):

☒ HC Adult A.D.A.

☒ CHD Child

☒ PET Pet

3.) Options:

- ☐ 316-3 316 Stainless Steel Body, Triple
- ☐ CAR-1 Surface Carrier, Single
- ☐ CAR-2 Surface Carrier, Double
- ☐ SOV Shut Off Valve
- ☐ SCV Seasonal Bowl Cover
- ☐ FRV-3 Freeze Resistant Valve System, Triple
- ☐ JF Jug Filler
- ☐ HBE Hose Bibb Exposed
- ☐ HBLD Recessed Hose Bibb W/Lock Door
- ☐ HBLD-SS Recessed Stainless Steel Hose Bibb W/Lock Door
- ☐ FW Foot Wash

4.) Colors (select one):

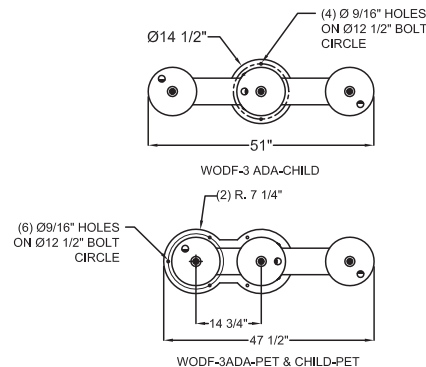
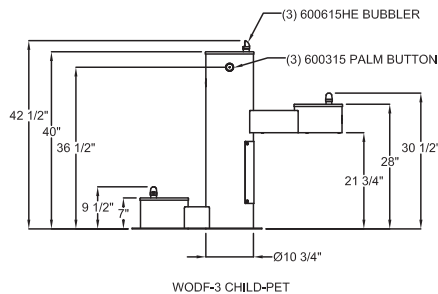
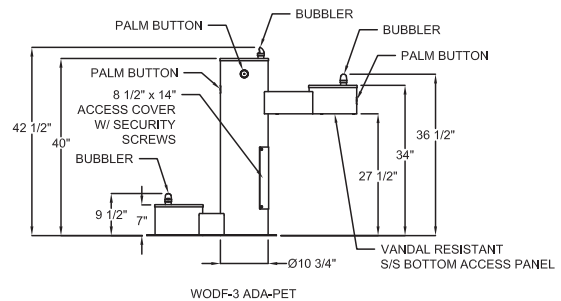
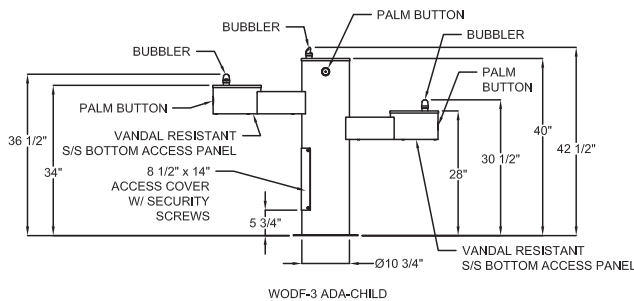
- ☐ S Bare Stainless - Beadblast Finish
- ☐ G Green
- ☐ R Red
- ☐ BL Blue
- ☐ O Orange
- ☐ V Violet
- ☐ Y Yellow
- ☐ BR Brown
- ☐ BK Black
- ☐ BG Beige
- ☐ W White

choose one

Approved For Manufacturing By: _____ Date: _____ Company: _____

Wall Thickness: _____ Wall Type: _____

VERIFY ALL DIMENSIONS WITH FACTORY PRIOR TO ROUGH-IN
WILLOUGHBY RESERVES THE RIGHT TO MAKE CHANGES IN DESIGN AND
DIMENSIONS WITHOUT FORMAL NOTICE AND WITHOUT INCURRING OBLIGATION.



visit our website at www.willoughby-ind.com
5105 West 78th Street • Indianapolis, IN 46268
(317) 875-0830 • Fax: (317) 875-0837 • (800) 428-4065



MADE IN THE U.S.A.



BUILT TO LAST, IN AMERICA

Powder Coatings Color Chart

Willoughby stainless steel plumbing fixtures from toilets to outdoor drinking fountains can be powder coated for additional protection or aesthetic reasons. Powder coating increases durability while doing so in designer colors. Standard colors are below and custom colors are also available.



Beige



Blue



Black



Brown



Green



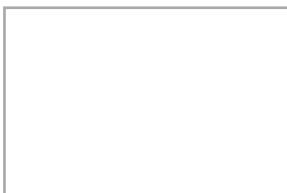
Orange



Red



Violet



White



Yellow



Note: Swatch colors may differ from actual paint colors. Contact your rep for samples.



WILLOUGHBY

COUNT ON US.

800.428.4065 | www.willoughby-ind.com