



CENTRALBIDDING
FROM CENTRAL AUCTION HOUSE

**5000133757 LABOR, MATERIALS, EQUIPMENT, DELIVERY AND ALL
OTHER INCIDENTALS NECESSARY TO SUPPLY AND INSTALL FOUR (4)
CROSSWALK SIGNS FOR THE JEFFERSON PARISH GENERAL
SERVICES DEPARTMENT**
Jefferson Parish Government

Project documents obtained from www.CentralBidding.com

01-Mar-2021 11:28:10 AM



BID 50-133757

**Labor, materials, equipment, delivery and all other incidentals
necessary to supply and install four (4) crosswalk signs for the
Jefferson Parish General Services Department**

MARCH 8, 2021 @ 11:00 A.M.

ATTENTION VENDORS!!!

**Please review all pages and respond accordingly, complying with all provisions
in the technical specifications and Jefferson Parish Instructions for Bidders and
General Terms and Conditions. All bids must be received on the Purchasing
Department's eProcurement site, www.jeffparishbids.net, by the bid due date
and time.**

Please Email Questions to:

Rae Lynn Hartman

RScott@jeffparish.net

504-364-2688



JEFFERSON PARISH

DEPARTMENT OF PURCHASING

CYNTHIA LEE SHENG
PARISH PRESIDENT

RENNY SIMNO
DIRECTOR

September 2020

Changes to Jefferson Parish Bidding Information

The Jefferson Parish Purchasing Department would like to make vendors aware of the following changes:

Total Bid Price Must Include the Cost of Naming Jefferson Parish as Additional Insured:

Bidder acknowledges that Bidder recovered the cost of any required insurance in the contract price as required by La.R.S. 9:2780.1 and that Bidder recovered any such cost for the purposes of insuring an obligation to indemnify Jefferson Parish, defend Jefferson Parish, or hold Jefferson Parish harmless and that Bidder's indemnity liability is limited to the amount of the proceeds that are payable under the insurance policy or policies that Bidder has obtained.

Electronic Procurement: Beginning November 1, 2020, Jefferson Parish will no longer accept manual bid submissions; and will only accept bid submissions electronically via our e-Procurement system, Central Bidding. Central Bidding can be accessed by visiting either www.centralbidding.com or www.jeffparishbids.net. All bidders will be required to register with Central Bidding. Jefferson Parish vendors are able to register for free by accessing the following link:
<https://www.centrauctionhouse.com/registration.php>.

Probable Construction Cost: Per Jefferson Parish Administrative Policy, the probable construction cost is not revealed in the Jefferson Parish Bidding Documents. Jefferson Parish Administrative Policy has changed and a range of the probable construction cost will be stated in the Jefferson Parish bidding document, entitled Important Notice to All Bidders – Bid Requirements. Per Louisiana Public Bid Law, the probable construction cost will be read at the bid opening.

Insurance Requirement: All bidders must provide proof of valid insurance in the required amounts as stated in the Standard Insurance Requirements for bidding purposes. Failure to provide the proof of valid insurance in all of the required coverage amounts will result in bid rejection.

GENERAL GOVERNMENT BLDG. – 200 DERBIGNY ST., SUITE 4400, GRETN, LA 70053
OFFICE 504.364.2678

JOSEPH S. YENNI BLDG. – 1221 ELMWOOD PARK BLVD., SUITE 404, JEFFERSON, LA 70123
OFFICE 504.364.2678
EMAIL: PURCHASING@JEFFPARISH.NET WEBSITE: WWW.JEFFPARISH.NET

STANDARD INSURANCE REQUIREMENTS FOR BIDDING PURPOSES

All required insurance under this bid shall conform to Jefferson Parish Resolution No. 113646 or No. 113647, as applicable. Contractors may not commence any work under any ensuing contract unless and until all required insurance and associated evidentiary requirements thereto have been met, along with any additional specifications contained in the **Invitation to Bid**. Except as where otherwise precluded by law, the Parish Attorney or his designee, with the concurrence of the Director of Risk Management or his designee, may agree on a case-by-case basis, to deviate from Jefferson Parish's standard insurance requirements, as provided in this Section. Vendors requesting deviation therefrom shall submit such requests in writing, along with compelling substantiation, to the Purchasing Department prior to the bid's due date. Any changes to the insurance requirements will be reflected in the bid specifications and addenda. Prior to contract execution and at all times thereafter during the term of such contract, contractors must provide and continuously maintain all coverages as required by the foregoing Resolutions, and the contract documents. Failure to do so shall be grounds for suspension, discontinuation or termination of the contract.

For bidding purposes, bidders must submit with bid submission a current (valid) insurance certificate evidencing the required coverages. Failure to comply will cause bid to be rejected. The current insurance certificate will be used for proof of insurance at time of evaluation. Thereafter, and prior to contract execution, the low bidder will be required to provide final insurance certificates to the Parish which shall name **the Jefferson Parish, its Districts Departments and Agencies under the direction of the Parish President and the Parish Council** as additional insureds regarding negligence by the contractor for the Commercial General Liability and the Comprehensive Automobile Liability policies. Additionally, said certificates should reflect the name of the Parish Department receiving goods and services and reference the respective Jefferson Parish bid number.

JEFFERSON PARISH REQUIRED STANDARD INSURANCE

☒ WORKER'S COMPENSATION INSURANCE

As required by Louisiana State Statute, exception; Employer's Liability, Section B shall be \$1,000,000 per occurrence when Work is to be over water and involves maritime exposures to cover all employees not covered under the State Worker's Compensation Act, otherwise this limit shall be no less than \$500,000 per occurrence.

Note: If your company is not required by law to carry workmen's compensation insurance, i.e. not a Louisiana company, sole employee of the company, then bidders must request a workmen's compensation insurance declaration affidavit prior to the bid opening date. This insurance declaration affidavit must be fully completed, signed, properly notarized and submitted with the bid. A scanned copy may be submitted with the bid; however, the successful bidder must submit the original affidavit in its original format and without material alteration upon contract execution. Failure to comply will result in the bid submission being

rejected as non-responsive. The Parish reserves the right to award bid to the next lowest responsive and responsible bidder in this event.

☒ **COMMERCIAL GENERAL LIABILITY**

Shall provide limits not less than the following: \$1,000,000.00 Combined Single Limit per Occurrence for bodily injury and property damage.

☒ **COMPREHENSIVE AUTOMOBILE LIABILITY**

Bodily injury liability \$1,000,000.00 each person; \$1,000,000.00 each occurrence.
Property Damage Liability \$1,000,000.00 each occurrence.

Note: This category may be omitted if bidders do not/will not utilize company vehicles for the project or do not possess company vehicles. Bidder must request an automobile insurance declaration affidavit prior to the bid opening date. This insurance declaration affidavit must be fully completed, signed, properly notarized and submitted with the bid. A scanned copy of the completed, signed and properly notarized affidavit may be submitted with the bid; however, the successful bidder must submit the original affidavit in its original format and without material alteration upon contract execution. Failure to comply will result in the bid submission being rejected as non-responsive. The Parish reserves the right to award bid to the next lowest responsive and responsible bidder in this event.

DEDUCTIBLES - The Parish Attorney with concurrence of the Director of Risk Management have waived the deductible section of the Terms and Conditions for all Invitations to Bid, until further notice.

UMBRELLA LIABILITY COVERAGE

An umbrella policy or excess may be used to meet minimum requirements.

FOR CONSTRUCTION AND RENOVATION PROJECTS:

The following are required if selected below. Such insurance is due upon contract execution.

☐ **OWNER'S PROTECTIVE LIABILITY**

To be for the same limits of liability for bodily injury and property damage liability established for commercial general liability.

☐ **BUILDER'S RISK INSURANCE**

The contractor shall maintain Builder's Risk Insurance at his own expense to insure both the owner (Parish of Jefferson) and contractor as their interest may appear.

DATE: 2/25/2021

INVITATION TO BID
THIS IS NOT AN ORDER

Page: 1

BID NO.: 50-00133757

JEFFERSON PARISH
PURCHASING DEPARTMENT
P.O. BOX 9
GRETN, LA. 70054-0009
504-364-2678

VENDOR: 27118 BLANK BID COPY VENDOR

BUYER: RSCOTT@jeffparish.net

Bids will be received until 11:00 AM, 3/08/2021 via online at www.jeffparishbids.net.

LATE BIDS WILL NOT BE ACCEPTED

NOTE: ONLY BIDS WRITTEN IN INK OR TYPEWRITTEN, AND PROPERLY SIGNED BY A MEMBER OF THE FIRM OR AUTHORIZED REPRESENTATIVE, WILL BE ACCEPTED. PENCIL AND/OR PHOTOSTATIC FIGURES OR SIGNATURES SHALL RESULT IN BID REJECTION. HOWEVER, ELECTRONIC SIGNATURES AS DEFINED IN LSA - R.S. 9:2602(8) ARE ACCEPTABLE. SIGNATURE MUST BE A SECURED DIGITAL SIGNATURE.

All bids submitted are subject to these instructions and general conditions and any special conditions and specifications contained herein, all of which are made part of this bid proposal reference. By submitting a bid, vendor agrees to comply with all provisions of Louisiana Law, as well be in compliance with the Jefferson Parish Code of Ordinances, Louisiana Code of Ethics, applicable Jefferson Parish ethical standards and Jefferson Parish Resolution No. 113646 and/or Resolution No. 113647 as amended. A copy of these resolutions may be obtained from the Office of the Parish Clerk, Suite 6700, Jefferson Parish General Government Building, 200 Derbigny Street, Gretna, LA 70053. You may also obtain a copy by visiting the Purchasing Department webpage at purchasing.jeffparish.net and clicking on On-line forms.

All vendors submitting bids should register as a Jefferson Parish vendor if not already yet registered. Registration forms may be downloaded from <http://purchasing.jeffparish.net> and by clicking on Vendor Information. Current W-9 forms with respective Tax Identification numbers and vendor applications may be submitted at any time; however, if your company is not registered and/or a current W-9 form is not on file, vendor registration is mandatory. Vendors may experience a delay in payment if your company is not a registered vendor with Jefferson Parish.

Jefferson Parish is exempt from paying sales tax under LSA-R.S. 47:301 (8)(c). All prices for purchases by Jefferson Parish of supplies and materials shall be quoted in the unit of measure specified and unless otherwise specified, shall be exclusive of state and local taxes. The price quoted for work shall be stated in figures. In the event there is a difference in unit prices and totals, the unit price shall prevail. Quotations shall be based on F.O.B. Delivered, anywhere within the Parish as designated by the Purchasing Department. JEFFERSON PARISH WILL ACCEPT ONE BID ONLY FROM EACH VENDOR. Items bid must meet specifications. JEFFERSON PARISH will accept one price for each item unless otherwise indicated. Two or more prices for one item will result in bid rejection. Bidders are required to complete, sign and return the bid form and/or complete and return the associated line item pricing forms as indicated. The price quoted for work shall be stated in figures. In the event there is a difference in unit prices and totals, the unit prices shall prevail.

JEFFERSON PARISH reserves the right to award contracts or place orders on a lump sum or individual item basis, or such combination, as shall in its judgment be in the best interest of JEFFERSON PARISH. Every contract or order shall be awarded to the LOWEST RESPONSIVE and RESPONSIBLE BIDDER, taking into consideration the CONFORMITY WITH THE SPECIFICATIONS and the DELIVERY AND/OR COMPLETION DATE.

PROTESTS: Only those vendors that submit bids in response to this solicitation may protest any element of the procurement, in writing to the Director of the Purchasing Department. Written protest must be received within 48 hours of the release of the bid tabulation by the Purchasing Department. After consultation, the Parish Attorney's Office will then respond to protests in writing. (For more information, please see Chapter 2, Article VII, Division 2, Sec. 2-914.1 of the Jefferson Parish Code of Ordinances.)

JEFFERSON PARISH reserves the right to cancel all or any part of an order if not shipped promptly. No charges will be allowed for parking or cartage unless specified in the quotation. The order must not be filled at a higher price than quoted. JEFFERSON PARISH reserves the right to cancel at any time and for any reason by issuing a THIRTY (30) day written notice to the contractor.

JEFFERSON PARISH requires all products to be new (current) and all work must be performed according to standard practices for the project. Unless otherwise specified, no aftermarket parts will be accepted. Unless otherwise specified, all workmanship and materials must have at least one (1) year guaranty, in writing, from the date of delivery and/or acceptance of the project. Any deviations or alteration from the specifications must be indicated on the bid form for each item and upon request, product data for same must be submitted by the time specified by the Purchasing Department.

If this bid requires a pre-bid conference (see Additional Requirements section), bidders are advised that such conference will be held to allow bidders the opportunity to identify any discrepancies in the bid specifications and seek further clarification regarding instructions. The Purchasing Department will issue a written response to bidders' questions in the form of an Addendum.

All formal Addenda require written acknowledgment on the bid form by the bidder by the bidder placing the Addendum number in the appropriate section. Failure to acknowledge an Addendum on the bid form shall cause the bid to be rejected; JEFFERSON PARISH reserves the right to award bid to next lowest responsive and responsible bidder in this event.

USE OF BRAND NAMES AND STOCK NUMBERS: Where brand names and stock numbers are specified, it is for the purpose of establishing certain minimum standards of quality. Bids may be submitted for products of equal quality, provided brand names and stock numbers are specified. Complete product data may be required prior to award.

Quantities listed are for bidding purposes only. Actual requirements may be more or less than quantities listed.

INSTRUCTIONS FOR BIDDERS AND GENERAL CONDITIONS

Bidders are not to exclude from participation in, deny the benefits of, or subject to discrimination under any program or activity, any person in the United States on the grounds of race, color, national origin, or sex; nor discriminate on the basis of age under the Age Discrimination Act of 1975, or with respect to an otherwise qualified handicapped individual as provided in Section 504 of the Rehabilitation Act of 1973, or on the basis of religion, except that any exemption from such prohibition against discrimination on the basis of religion as provided in the Civil Rights Act of 1964, or Title VI and VII of the Act of April 11, 1968, shall also apply. This assurance includes compliance with the administrative requirements of the Revenue Sharing final handicapped discrimination provisions contained in Section 51.55 (c), (d), (e), and (k)(5) of the Regulations. New construction or renovation projects must comply with Section 504 of the 1973 Rehabilitation Act, as amended, in accordance with the American National Standard Institute's specifications (ANSI A17.1-1961).

Jefferson Parish and its partners as the recipients of federal funds are fully committed to awarding a contract(s) to firm(s) that will provide high quality services and that are dedicated to diversity and to containing costs. Thus, Jefferson Parish strongly encourages the involvement of minority and/or woman-owned business enterprises (DBE's, including MBE's, WBE's and SBE's) to stimulate participation in procurement and assistance programs.

IN ACCORDANCE WITH STATE REGULATIONS JEFFERSON PARISH OFFERS ELECTRONIC PROCUREMENT TO ALL VENDORS

This electronic procurement system allows vendors the convenience of reviewing and submitting bids online. This is a secure site and authorized personnel have limited read access only. Bidders are to submit electronically using this free service; while the website accepts various file types, one single PDF file containing all appropriate and required bid documents is preferred. Bidders submitting uploaded images of bid responses are solely responsible for clarity. If uploaded images/documents are not legible, then bidder's submission will be rejected. Please note all requirements contained in this bid package for electronic bid submission.

Please visit our E-Procurement Page at www.jeffparishbids.net to register and view Jefferson Parish solicitations. For more information, please visit the Purchasing Department page at <http://purchasing.jeffparish.net>.

ADDITIONAL REQUIREMENTS FOR THIS BID

PLEASE MATCH THE NUMBERS PRINTED IN THIS BOX WITH THE CORRESPONDING INSTRUCTIONS BELOW.

3, 5, 6, 10, 13

1. All bidders must attend the MANDATORY pre-bid conference and will be required to sign in and out as evidence of attendance. In accordance with LSA R.S. 38:2212(I), all prospective bidders shall be present at the beginning of the MANDATORY pre-bid conference and shall remain in attendance for the duration of the conference. Any prospective bidder who fails to attend the conference or remain for the duration shall be prohibited from submitting a bid for the project.
2. Attendance to this pre-bid conference is optional. However, failure to attend the pre-bid conference shall not relieve the bidder of responsibility for information discussed at the conference. Furthermore, failure to attend the pre-bid conference and inspection does not relieve the successful bidder from the necessity of furnishing materials or performing any work that may be required to complete the work in accordance with the specification with no additional cost to the owner.
3. Contractor must hold current applicable JEFFERSON PARISH licenses with the Department of Inspection and Code Enforcement. Contractor shall obtain any and all permits required by the JEFFERSON PARISH Department of Inspection and Code Enforcement. The contractor shall be responsible for the payment of these permits. All permits must be obtained prior to the start of the project. Contractor must also hold any and all applicable Federal and State licenses. Contractor shall be responsible for the payment of these permits and shall obtain them prior to the start of the project.
4. A LA State Contractor's License will be required in accordance with LSA R.S. 37-2150 et. seq. and such license number will be shown on the outside of the bid electronic envelope. Failure to comply will cause the bid to be rejected. When submitting the bid electronically, the license number must be entered in the appropriate field in the electronic procurement system. Failure to comply will cause the bid to be rejected.

INSTRUCTIONS FOR BIDDERS AND GENERAL CONDITIONS

5. It is the bidder's responsibility to visit the job site and evaluate the job before submitting a bid.
6. Job site must be clean and free of all litter and debris daily and upon completion of the contract. Passageways must be kept clean and free of material, equipment, and debris at all times. Flammable material must be removed from the job site daily because storage will not be permitted on the premises. Precaution must be exercised at all times to safeguard the welfare of JEFFERSON PARISH and the general public.
7. **PUBLIC WORKS BIDS:** All awards for public works in excess of \$5,000.00 will be reduced to a formal contract which shall be recorded at the contractor's expense with the Clerk of Court and Ex-Officio Recorder of Mortgages for the Parish of Jefferson. A price list of recordation costs may be obtained from the Clerk of Court and Ex-Officio Recorder of Mortgages for the Parish of Jefferson. All awards in excess of \$25,000.00 will require both a performance and a payment bond. Unless otherwise stated in the bid specifications, the performance bond requirements shall be 100% of the contract price. Unless otherwise state in the bid specifications, the payment bond requirements shall be 100% of the contract price. Both bonds shall be supplied at the signing of the contract.
8. **NON-PUBLIC WORKS BIDS:** A performance bond will be required for this bid. The amount of the bond will be 100% of the contract price unless otherwise indicated in the specifications. The performance bond shall be supplied at the signing of the contract.
9. **NON-PUBLIC WORKS BIDS:** A payment bond will be required for this bid. The amount of the bond will be 100% of the contract price unless otherwise indicated in the specifications. The payment bond shall be supplied at the signing of the contract.
10. All bidders must comply with the requirements stated in the attached "Standard Insurance Requirements" sheet attached to this bid solicitation. Failure to comply with this instruction will result in bid rejection.
11. A bid bond will be required with bid submission in the amount of 5% of the total bid, unless otherwise stated in the bid specifications. All sureties must be in original format (no copies). When submitting a bid online, vendors must submit an electronic bid bond through the respective online clearinghouse bond management system(s) as indicated in the electronic bid solicitation on Central Auction House. No scanned paper copies of any bid bond will be accepted as part of the electronic bid submission.
12. This is an as needed basis contract. JEFFERSON PARISH makes no representations on warranties with regard to minimum guaranteed quantities unless otherwise stated in the bid specifications.
13. Freight charges should be included in total cost when quoting. If not quoted FOB DELIVERED, freight must be quoted as a separate item. Bid may be rejected if not quoted FOB DELIVERED or if freight charges are not indicated on bid form.
14. **PUBLIC WORKS BIDS - Completed, Signed and Properly Notarized Affidavits Required;** This applies to all solicitations for construction, alteration or demolition of public buildings or projects, in conformity with the provisions contained in LSA-RS 38:2212.9, LSA-RS 38:2212.10, LSA-RS 38:2224, and Sec 2-923.1 of the Jefferson Parish Code of Ordinances. For bidding purposes, all bidders must submit with bid submission COMPLETED, SIGNED and PROPERLY NOTARIZED Affidavits, including: Non-Conviction Affidavit, Non-Collusion Affidavit, Campaign Contribution Affidavit, Debt Disclosures Affidavit and E-Verify Affidavit. For the convenience of vendors, all affidavits have been combined into one form entitled PUBLIC WORKS BID AFFIDAVIT. This affidavit must be submitted in its original format, and without material alteration, in order to be compliant and for the bid to be considered responsive. A scanned copy of the completed, signed and properly notarized affidavit may be submitted with the bid, however, the successful bidder must submit the original affidavit in its original format and without material alteration upon contract execution. Failure to comply will result in the bid submission being rejected as non-responsive. The Parish reserves the right to award bid to the next lowest responsive and responsible bidder in this event.
15. **NON PUBLIC WORK BIDS - Completed, Signed and Properly Notarized Affidavits Required** in conformity with the provisions contained in LSA – RS 38:2224 and Sec 2-923.1 of the Jefferson Parish Code of Ordinances. For bidding purposes, all bidders must submit with bid submission COMPLETED, SIGNED and PROPERLY NOTARIZED Affidavits, including: Non-Collusion Affidavit, Debt Disclosures Affidavit and Campaign Contribution Affidavit. For the convenience of vendors, all affidavits have been combined into one form entitled NON PUBLIC WORKS BID AFFIDAVIT. This affidavit must be submitted in its original format, and without material alteration, in order to be compliant and for the bid to be considered responsive. A scanned copy of the completed, signed and properly notarized affidavit may be submitted with the bid, however, the successful bidder must submit the original affidavit in its original format and without material alteration upon contract execution. Failure to comply will result in the bid submission being rejected as non-responsive. The Parish reserves the right to award bid to the next lowest responsive and responsible bidder in this event.

DATE: 2/25/2021

BID NO.: 50-00133757

Page: 4

INSTRUCTIONS FOR BIDDERS AND GENERAL CONDITIONS

16. The ensuing contract for this bid solicitation may be eligible for FEMA reimbursement and/or Federal funding/reimbursement. As such, the referenced appendix will be applicable accordingly and shall be considered a part of the bid documents. All applicable certifications must be duly completed, signed and submitted with bid submission. Failure to submit applicable certifications with bid submission will result in bid rejection.

17. For this project, the Contractor shall not pay any state or local sales or use taxes on materials and equipment which are affixed and made part of the immovable property of the project or which is permanently incorporated in the project (hereinafter referred to as "applicable materials and equipment"). All purchases of applicable materials or equipment shall be made by the contractor on behalf of and as the agent of Jefferson Parish (Owner), a political subdivision of the State of Louisiana. No state and local sales and use taxes are owed on applicable materials and equipment under the provisions of Act 1029 of the 1991 Regular Session - Louisiana Revised Statute 47:301(8)(c). Owner will furnish to contractor a certificate form which certifies that Owner is not required to pay such state or local sales and use taxes, and contractor shall furnish a copy of such certificate to all vendors or suppliers of the applicable materials and equipment, and report to Owner the amount of taxes not incurred.

It shall be the duty of every parish officer, employee, department, agency, special district, board, and commission: and the duty of every contractor, subcontractor, and licensee of the parish, and the duty of every applicant for certification of eligibility for a parish contract or program, to cooperate with the Inspector General in any investigation, audit, inspection, performance review, or hearing pursuant to Jefferson Parish Code of Ordinances Section 2-155.10(19). By submitting a bid, vendor acknowledges this and will abide by all provisions of the referenced Jefferson Parish Code of Ordinances.

DATE: 2/25/2021

INVITATION TO BID
THIS IS NOT AN ORDER

Page: 5

BID NO.: 50-00133757

JEFFERSON PARISH

PURCHASING DEPARTMENT
P.O. BOX 9
GRETN, LA. 70054-0009
504-364-2678

VENDOR: 27118 BLANK BID COPY VENDOR

BUYER: RSCOTT

As per LSA-RS 47:301 et seq., all governmental bodies are excluded from payment of sales taxes to any Louisiana taxing body. Quotations shall be based on F.O.B. Agency warehouse or jobsite, anywhere within the Parish as designated by the Purchasing Department.

JEFFERSON PARISH reserves the right to cancel all or any part of an order if not shipped promptly. No charges will be allowed for parking or cartage unless specified in quotation. The order must not be filled at a higher price than quoted. JEFFERSON PARISH reserves the right to cancel at any time and for any reason by issuing a THIRTY (30) day written notice to the contractor.

JEFFERSON PARISH is expecting all products to be new and all work to be done in workman-like manner, according to standard practices. Any deviations or alteration from the specifications must be indicated on the bid form for each item and upon request, product data for same must be submitted by the time specified by the Purchasing Department.

DELIVERY: FOB JEFFERSON PARISH

INDICATE DELIVERY DATE ON EQUIPMENT AND SUPPLIES

INDICATE STARTING TIME (IN DAYS) FOR CONSTRUCTION WORK

INDICATE COMPLETION TIME (IN DAYS) FOR CONSTRUCTION WORK

90 days

30 days

In the event that addenda are issued with this bid, bidders MUST acknowledge all addenda on the bid form. Bidder must acknowledge receipt of an addendum on the bid form by placing the addendum number as indicated. Failure to acknowledge any addendum on the bid form will result in bid rejection.


Acknowledge Receipt of Addenda: NUMBER: _____

NUMBER: _____

NUMBER: _____

NUMBER: _____

LOUISIANA CONTRACTOR'S LICENSE NO.: (if applicable) 68508

*** ALL BIDDERS MUST COMPLETE SECTION BELOW ***	
FIRM NAME: Traffic Solutions Louisiana, LLC	
SIGNATURE: (Must be signed here) 	TITLE: President
PRINT OR TYPE NAME: Chad Price	
ADDRESS: 2950 St Anthony Ave	
CITY, STATE: New Orleans, LA	ZIP: 70122
TELEPHONE: (504) 948-4809	FAX: (504) 948-4802
EMAIL ADDRESS: chad@trafficsolutionsinc.net	

TOTAL PRICE OF ALL BID ITEMS: \$ 32,500

DATE: 2/25/2021

Page: 6

INVITATION TO BID FROM JEFFERSON PARISH - continued

BID NO.: 50-00133757

SEALED BID

ITEM NUMBER	QUANTITY	U/M	DESCRIPTION OF ARTICLES	UNIT PRICE QUOTED	TOTALS
1	1.00	JOB	<p>Labor, materials, equipment, delivery and all other incidentals necessary to supply and in stall four (4) crosswalk signs for the Jefferson Parish General Services Department</p> <p>0010 - CROSSWALK SIGNS JEFFERSON PERFORMING ARTS CENTER</p> <p>PROVIDE LABOR, MATERIALS, EQUIPMENT, DELIVERY AND ALL OTHER INCIDENTALS NECESSARY TO SUPPLY AND INSTALL FOUR (4) NEW SOLAR POWERED PEDESTRIAN CROSS WALK SIGNS FOR THE DEPARTMENT OF GENERAL SERVICES PER THE ATTACHED SPECIFICATIONS AT THE FOLLOWING LOCATION:</p> <p>JEFFERSON PERFORMING ARTS CENTER 6400 AIRLINE DRIVE METAIRIE, LA 70003</p>	32,500	32,500

**PROVIDE AND INSTALL FOUR (4) SOLAR POWERED PEDESTRIAN CROSSWALK SIGNS AT THE
JEFFERSON PERFORMING ARTS CENTER**

Section 1.0 – Site Visits:

Site visits will be available. Please contact Eric Romain, Property Manager at (504)736-6036.

Section 2.0 – Scope

We extend this bid to provide labor, materials, equipment, delivery, and all other incidentals necessary for the following:

- Provide and install four (4) new solar-powered pedestrian cross walk signs at the Jefferson Performing Arts Center located at 6400 Airline Drive, Metairie, LA 70003.

Section 3.0 - Submittals:

The following information shall be provided with bid submission. Failure to provide the requested information with your bid will result in the bid being deemed non-responsive.

- Manufacturer's catalog data
- Detail sheets
- Specifications of product
- Warranty information

Section 4.0 – Quantities/Inspection:

Bidders must inspect the sites and perform their own measurements and surveys to determine the proper quantities of labor hours, equipment, supplies, materials, etc. required for this bid.

Section 5.0 – Bid Specifications:

The following shall be performed for each sign:

- Provide and install four (4) new 13-foot 4.5-inch OD aluminum schedule 40 poles with square pedestal base and 42-inch J-bolts for mounting.
- Provide and install four (4) double sided TAPCO® Pedestrian Crossing Signs with LEDS (light-emitting diodes) See Attachment "A" for location
- Provide and install eight (8) 24-inch by 12-inch arrow signs with black graphics on fluorescent yellow-green .080 aluminum (two signs back to back on each pole).
- Sign poles shall be installed as per all Federal, State, and Parish regulations and guidelines.
- If applicable core drilling of concrete shall be included in this bid.
- Tapered aluminum square pedestal base plates shall be properly secured to concrete or asphalt.

Section 6.0 – Material Specifications:

EACH SIGN SHALL MEET THE FOLLOWING SPECIFICATIONS:

- Completed unit shall be assembled in the United States.
- All mounting hardware shall be stainless steel
- 36-inch pedestrian crossing signs
- .080 aluminum with black graphics on fluorescent yellow-green
- 24-inch x 12-inch arrow sign .080 aluminum with black graphics on fluorescent yellow-green.
- Signs installed back to back on pole
- 13-foot pole 4.5-inch od aluminum pole – schedule 40
- Tapered aluminum square pedestal base with 42-inch j-bolts for mounting
- Wireless radio communication
- Frequency 900 mhz frequency hopping spread spectrum
- Range 900 feet (provide radio site survey)
- Connectivity crosswalk and optional advanced warning LEDS activate concurrently
- Push button activation
- Activation ADA push button, typical (<120 millisecond)

RECTANGULAR RAPID FLASHING BEACON:

- Light bar housing black powder coated aluminum
- Vehicle LED modules
- 7-inch x 3-inch, 2 arrays of 8 amber LEDs spaced 7-inch apart,
- SAE J595 class 1 certified

PEDESTRIAN LED MODULES:

- 1-3/4-inch x 1/2-inch, side-viewable, flash simultaneously with vehicle LED, both sides
- Flash pattern combination wig-wag and simultaneous flash
- Dimmable automatically controlled via included photocell sensor
- Wind load rating up to 120mph
- Operating temperature range -40°f to 122°f

SIDE-OF-POLE CONTROL CABINET:

- HOUSING NEMA 3R aluminum

SOLAR PANEL:

- 55 watts

BATTERY:

- 12v, up to 48Ah
- Battery Lifespan: 3 to 5 years
- Field replaceable

ALL MOUNTING HARDWARE:

- Stainless steel

Section 7.0 – Hours of Work:

The work for this project shall be performed during normal working hours Monday thru Friday 8:00am – 4:00pm. The successful bidder may choose to work before or after normal working hours to provide a safe work environment at no extra charge to Jefferson Parish.

Section 8.0 – Cleaning Area and Safety:

Project site shall be clean and free of all litter and debris caused by this work daily and upon completion of project. Driveways and streets must be kept clean and free of material, equipment, and debris at all times. Precautions must be exercised at all times to safeguard the welfare and safety of the general public, employees of Jefferson Parish, and other Parish Officials.

Section 9.0 – Warranty:**9.1 Workmanship Warranty:**

- A minimum one (1) year labor warranty from successful bidder

9.2 Product Warranty:

- 3-year limited battery warranty
- 5-year limited system warranty
- 10-year limited solar panel warranty

A copy of all warranties shall be provided to owner at completion of project. All warranties shall commence at completion of project.

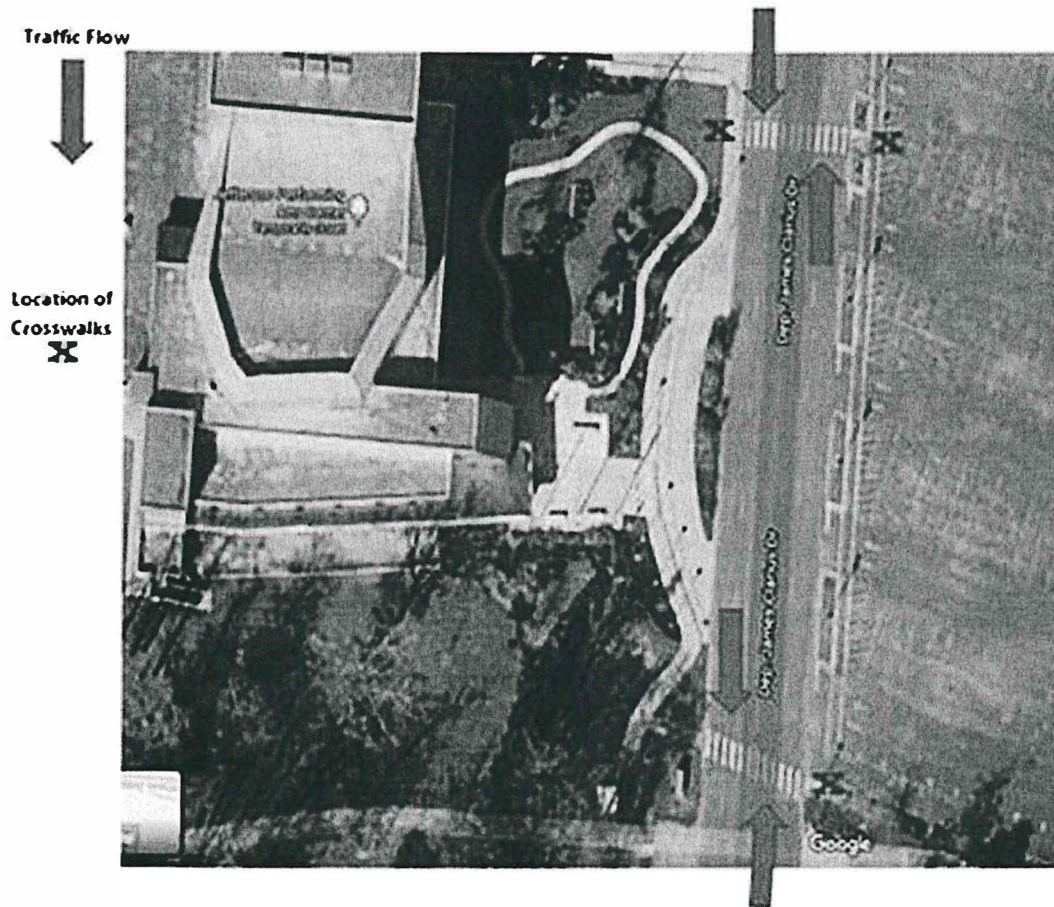
Section 10.0 – Liquidated Damages:

Commencing on the issuance of the “Notice to Proceed” letter to the successful bidder from the Department of General Services, the successful bidder shall have thirty days to substantially completing all work. After the thirty (30) day time period liquidated damages will be assessed in the amount of \$100/day.

Section 11.0 – Start of Work Conference and Notice to Order Materials and/or Notice to Proceed:

- A “Start of Work Conference” shall be held between the successful bidder and the owner prior to any work commencing.
- No Materials shall be ordered until the successful bidder receives a written “Notice to Order Materials” from the Department of General Services.
- No work shall be performed until the successful bidder receives a written “Notice to Proceed” to begin work, from the Department of General Services.

Attachment "A"



**LIMITED LIABILITY COMPANY
CERTIFIED AUTHORIZATION
TRAFFIC SOLUTIONS LOUISIANA, LLC**

On Behalf of Traffic Solutions Louisiana LLC, the undersigned hereby certifies that Chad Price is President of Traffic Solutions Louisiana LLC. The undersigned further certifies that Chad Price is authorized to execute and deliver all documents required by **Bid # 50-133757 – Labor, Materials, Equipment, Delivery and all other incidentals necessary to Supply and Install Four (4) Crosswalk Signs for Jefferson Parish General Services Dept**

Date: 3/2/2021

Signature: 
Chad Price, President

Chad Price
Traffic Solutions Louisiana, LLC
2950 St. Anthony Avenue
New Orleans, Louisiana 70122
504-948-4809
504-948-4802



CERTIFICATE OF LIABILITY INSURANCE

DATE (MM/DD/YYYY)
12/31/2020

THIS CERTIFICATE IS ISSUED AS A MATTER OF INFORMATION ONLY AND CONFERS NO RIGHTS UPON THE CERTIFICATE HOLDER. THIS CERTIFICATE DOES NOT AFFIRMATIVELY OR NEGATIVELY AMEND, EXTEND OR ALTER THE COVERAGE AFFORDED BY THE POLICIES BELOW. THIS CERTIFICATE OF INSURANCE DOES NOT CONSTITUTE A CONTRACT BETWEEN THE ISSUING INSURER(S), AUTHORIZED REPRESENTATIVE OR PRODUCER, AND THE CERTIFICATE HOLDER.

IMPORTANT: If the certificate holder is an ADDITIONAL INSURED, the policy(ies) must have ADDITIONAL INSURED provisions or be endorsed. If SUBROGATION IS WAIVED, subject to the terms and conditions of the policy, certain policies may require an endorsement. A statement on this certificate does not confer rights to the certificate holder in lieu of such endorsement(s).

PRODUCER Hays Companies 80 South 8th Street Suite 700 Minneapolis, MN 55402	1-612-333-3323	CONTACT NAME: Craig Murtha or Kathy Beatty PHONE (A/C, No. Ext): (612) 333-3323 FAX (A/C, No): (612) 373-7270 E-MAIL ADDRESS: kbeatty@hayscompanies.com
INSURED Traffic Solutions Louisiana, L.L.C. 2950 St. Anthony Avenue New Orleans, LA 70122		INSURER(S) AFFORDING COVERAGE INSURER A: ALLIED WORLD ASSUR CO US INC 19489 INSURER B: ALLIED WORLD NATL ASSUR CO 10690 INSURER C: AXIS SURPLUS INS CO 26620 INSURER D: REDWOOD FIRE & CAS INS CO 11673 INSURER E: INSURER F:

COVERAGES

CERTIFICATE NUMBER: 61095736

REVISION NUMBER:

THIS IS TO CERTIFY THAT THE POLICIES OF INSURANCE LISTED BELOW HAVE BEEN ISSUED TO THE INSURED NAMED ABOVE FOR THE POLICY PERIOD INDICATED. NOTWITHSTANDING ANY REQUIREMENT, TERM OR CONDITION OF ANY CONTRACT OR OTHER DOCUMENT WITH RESPECT TO WHICH THIS CERTIFICATE MAY BE ISSUED OR MAY PERTAIN, THE INSURANCE AFFORDED BY THE POLICIES DESCRIBED HEREIN IS SUBJECT TO ALL THE TERMS, EXCLUSIONS AND CONDITIONS OF SUCH POLICIES. LIMITS SHOWN MAY HAVE BEEN REDUCED BY PAID CLAIMS.

INSR LTR	TYPE OF INSURANCE	ADDL INSD	SUBR WVD	POLICY NUMBER	POLICY EFF (MM/DD/YYYY)	POLICY EXP (MM/DD/YYYY)	LIMITS
A	<input checked="" type="checkbox"/> COMMERCIAL GENERAL LIABILITY <input type="checkbox"/> CLAIMS-MADE <input checked="" type="checkbox"/> OCCUR GEN'L AGGREGATE LIMIT APPLIES PER: <input type="checkbox"/> POLICY <input checked="" type="checkbox"/> PRO-JECT <input type="checkbox"/> LOC OTHER:			6004-0626	01/01/21	01/01/22	EACH OCCURRENCE \$ 1,000,000 DAMAGE TO RENTED PREMISES (Ea occurrence) \$ 100,000 MED EXP (Any one person) \$ 5,000 PERSONAL & ADV INJURY \$ 1,000,000 GENERAL AGGREGATE \$ 2,000,000 PRODUCTS - COMP/OP AGG \$ 2,000,000 \$
B	<input checked="" type="checkbox"/> AUTOMOBILE LIABILITY <input checked="" type="checkbox"/> ANY AUTO <input type="checkbox"/> OWNED AUTOS ONLY <input type="checkbox"/> SCHEDULED AUTOS <input type="checkbox"/> HIRED AUTOS ONLY <input type="checkbox"/> NON-OWNED AUTOS ONLY			6000-1039	01/01/21	01/01/22	COMBINED SINGLE LIMIT (Ea accident) \$ 1,000,000 BODILY INJURY (Per person) \$ BODILY INJURY (Per accident) \$ PROPERTY DAMAGE (Per accident) \$ \$
C	<input checked="" type="checkbox"/> UMBRELLA LIAB <input checked="" type="checkbox"/> OCCUR <input type="checkbox"/> EXCESS LIAB <input type="checkbox"/> CLAIMS-MADE DED RETENTION \$			P-001-000485941-01	01/01/21	01/01/22	EACH OCCURRENCE \$ 2,000,000 AGGREGATE \$ 2,000,000 \$
D	WORKERS COMPENSATION AND EMPLOYERS' LIABILITY ANY PROPRIETOR/PARTNER/EXECUTIVE OFFICER/MEMBER EXCLUDED? (Mandatory in NH) If yes, describe under DESCRIPTION OF OPERATIONS below	Y/N <input checked="" type="checkbox"/> N	N/A	TRWC223454	01/01/21	01/01/22	<input checked="" type="checkbox"/> PER STATUTE <input type="checkbox"/> OTH-ER E.L. EACH ACCIDENT \$ 1,000,000 E.L. DISEASE - EA EMPLOYEE \$ 1,000,000 E.L. DISEASE - POLICY LIMIT \$ 1,000,000

DESCRIPTION OF OPERATIONS / LOCATIONS / VEHICLES (ACORD 101, Additional Remarks Schedule, may be attached if more space is required)

Evidence of Insurance

CERTIFICATE HOLDER**CANCELLATION**

Jefferson Parish Purchasing Department PO Box 9 Gretna, LA 70054-0009 USA	SHOULD ANY OF THE ABOVE DESCRIBED POLICIES BE CANCELLED BEFORE THE EXPIRATION DATE THEREOF, NOTICE WILL BE DELIVERED IN ACCORDANCE WITH THE POLICY PROVISIONS. AUTHORIZED REPRESENTATIVE
--	---

© 1988-2015 ACORD CORPORATION. All rights reserved.

ACORD 25 (2016/03)

The ACORD name and logo are registered marks of ACORD

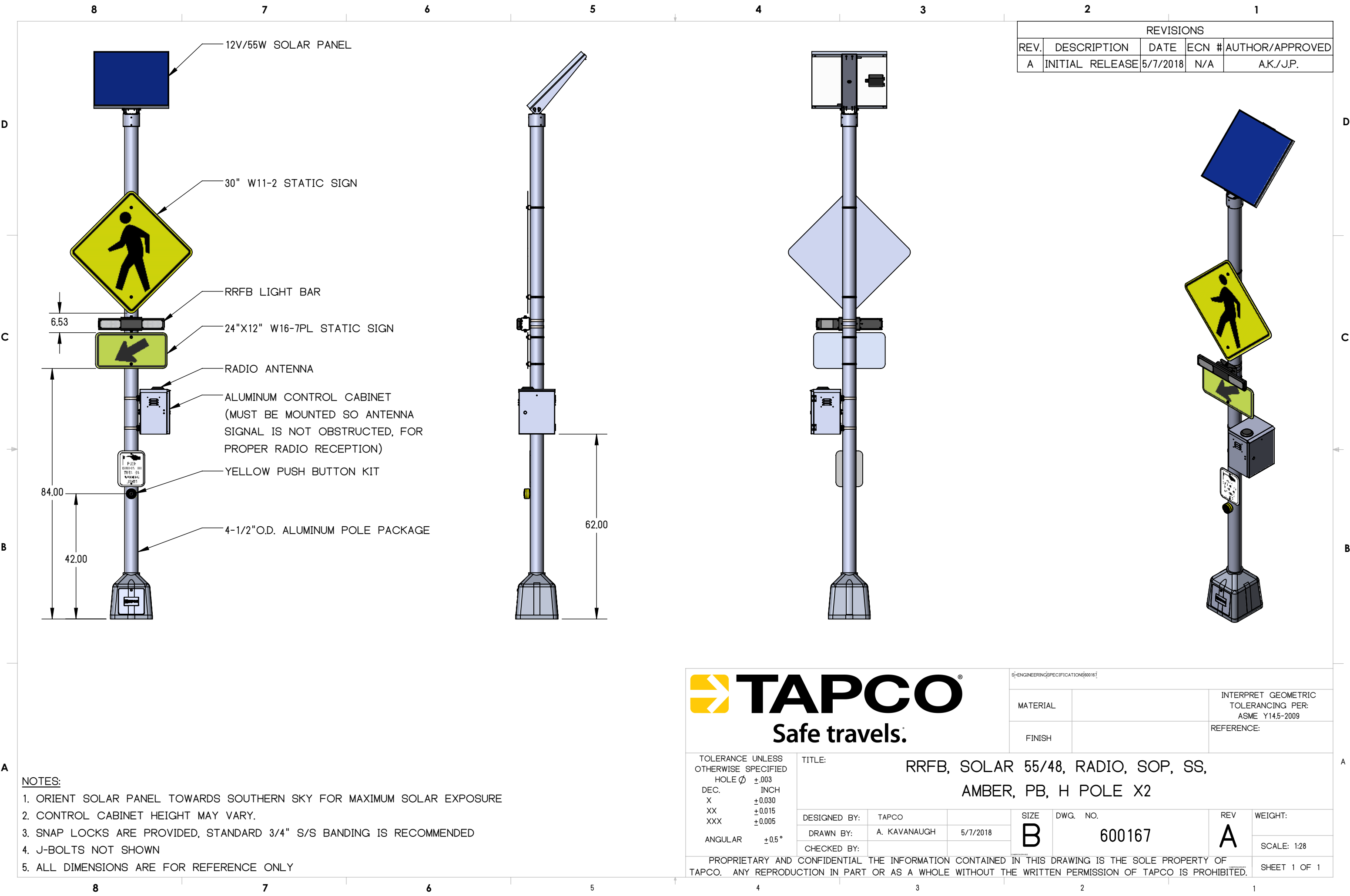
KBeatty
61095736

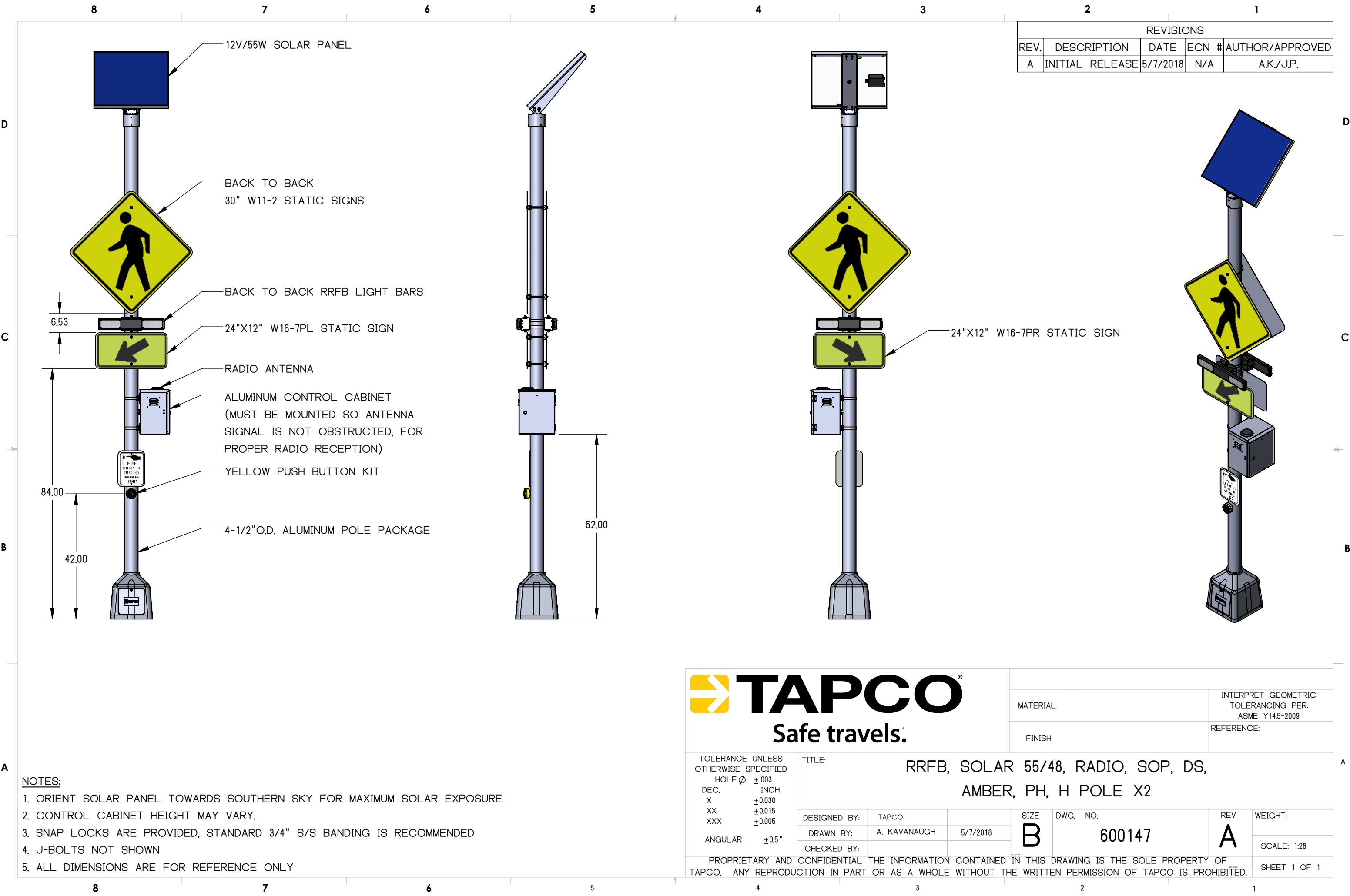
SOLAR RRFB PEDESTRIAN CROSSWALK SYSTEM

55W/48Ah with Bulldog Push Button

**Comprehensive Submittal Package
Version 1.0**

November 2, 2018





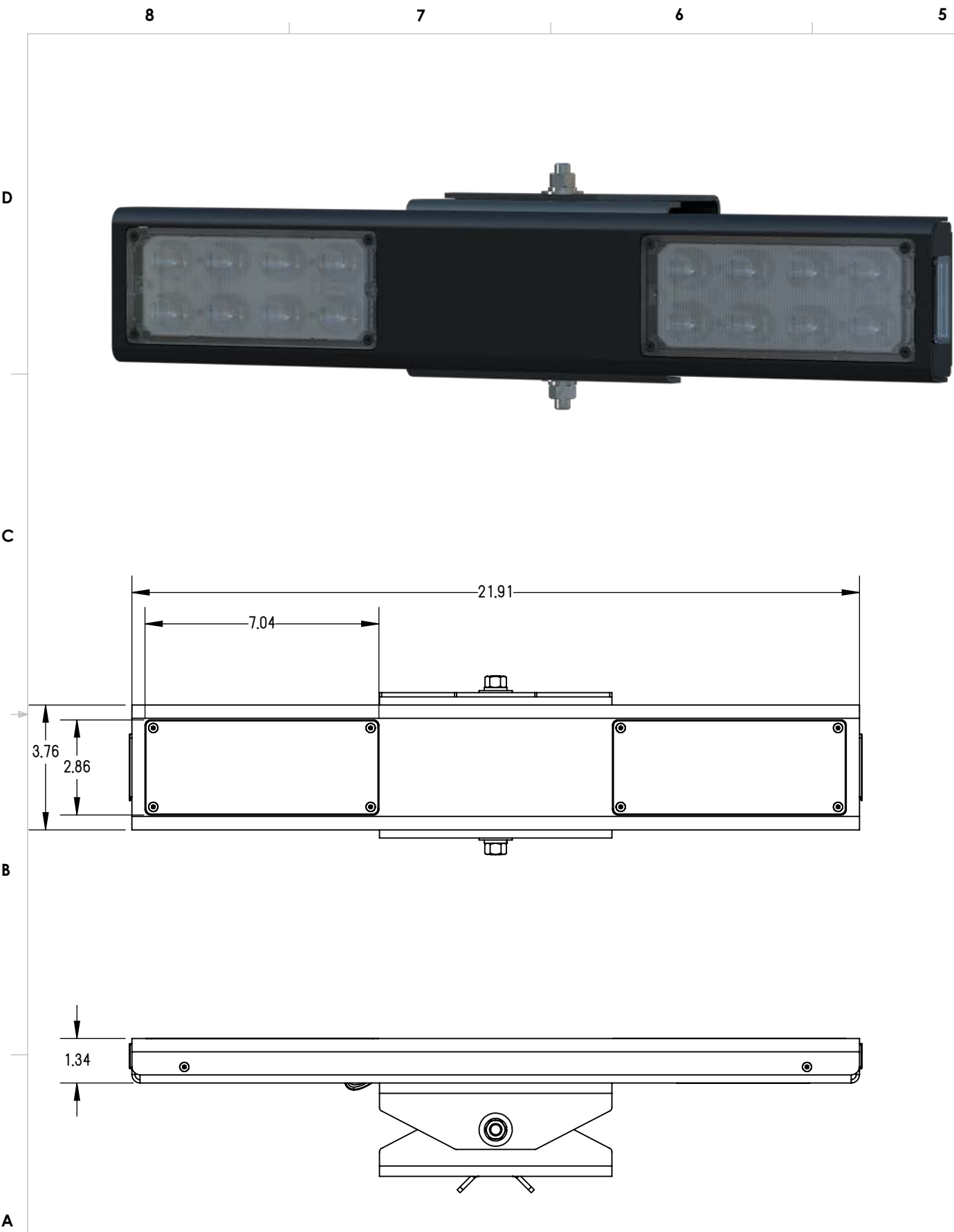
REVISIONS				
REV.	DESCRIPTION	DATE	ECN #	AUTHOR/APPROVED
A	INITIAL RELEASE	5/7/2018	N/A	A.K./J.P.

- NOTES:**
1. ORIENT SOLAR PANEL TOWARDS SOUTHERN SKY FOR MAXIMUM SOLAR EXPOSURE
 2. CONTROL CABINET HEIGHT MAY VARY.
 3. SNAP LOCKS ARE PROVIDED, STANDARD 3/4" S/S BANDING IS RECOMMENDED
 4. J-BOLTS NOT SHOWN
 5. ALL DIMENSIONS ARE FOR REFERENCE ONLY

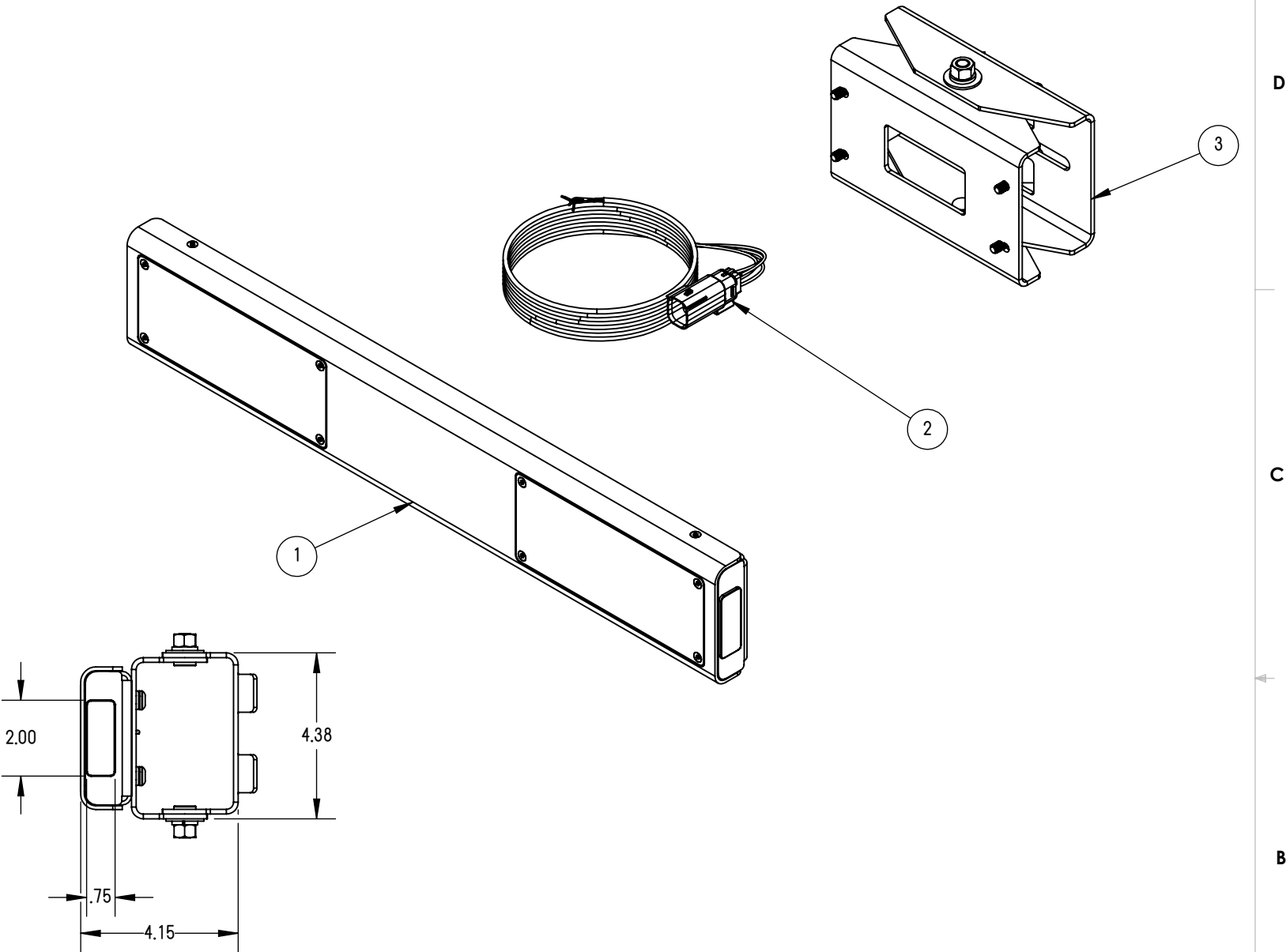
TAPCO
Safe travels.

MATERIAL		INTERPRET GEOMETRIC TOLERANCING PER: ASME Y14.5-2009
FINISH		REFERENCE:

TOLERANCE UNLESS OTHERWISE SPECIFIED HOLE Ø ±.003 DEC. INCH X ±.030 XX ±.015 XXX ±.005 ANGULAR ±.0°	TITLE: RRFB, SOLAR 55/48, RADIO, SOP, DS, AMBER, PH, H POLE X2						
	DESIGNED BY:	TAPCO		SIZE	DWG. NO.	REV	WEIGHT:
	DRAWN BY:	A. KAVANAUGH	5/7/2018	B	600147	A	SCALE: 1:28
	CHECKED BY:						SHEET 1 OF
PROPRIETARY AND CONFIDENTIAL THE INFORMATION CONTAINED IN THIS DRAWING IS THE SOLE PROPERTY OF TAPCO. ANY REPRODUCTION IN PART OR AS A WHOLE WITHOUT THE WRITTEN PERMISSION OF TAPCO IS PROHIBITED.							



REVISIONS				
REV.	DESCRIPTION	DATE	ECN #	AUTHOR/APPROVED
A	INITIAL RELEASE	5/3/2018	N/A	A.K./J.P.



3	138079	BRACKET MOUNTING KIT, RRFB, ARTICULATING	1	EA
2	136760	WIRE HARNESS, RRFB, 10' OF 4C W/MOLEX CONNECTOR	1	EA
1	136761	RRFB - AMBER LIGHT BAR, ADD 136760 - WIRE HARNESS, 138079 - MOUNTING KIT	1	EA
ITEM NO.	PART NUMBER	DESCRIPTION	QTY.	UNITS



TOLERANCE UNLESS OTHERWISE SPECIFIED	
HOLE ϕ	$\pm .003$
DEC.	INCH
X	$\pm .030$
XX	$\pm .015$
XXX	$\pm .005$
ANGULAR	$\pm 0.5^{\circ}$

TITLE:

RRFB-XL2™ ASSEMBLY WITH UNIVERSAL MOUNTING KIT

DESIGNED BY:	TAPCO	
DRAWN BY:	A. KAVANAUGH	5/2/2018
CHECKED BY:	J. PATTERSON	5/3/2018

SIZE

DWG. NO.

B

138089

REV

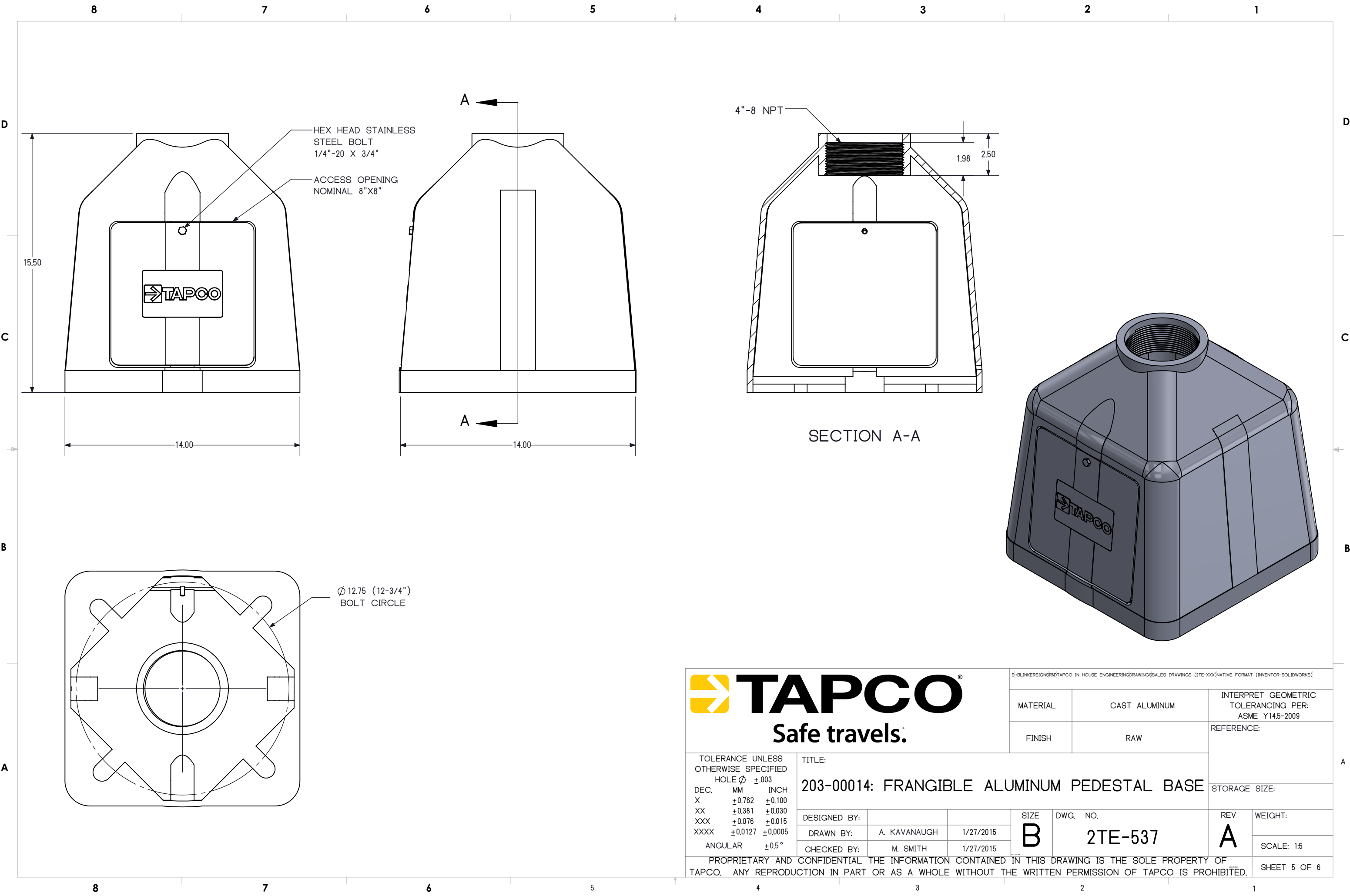
A

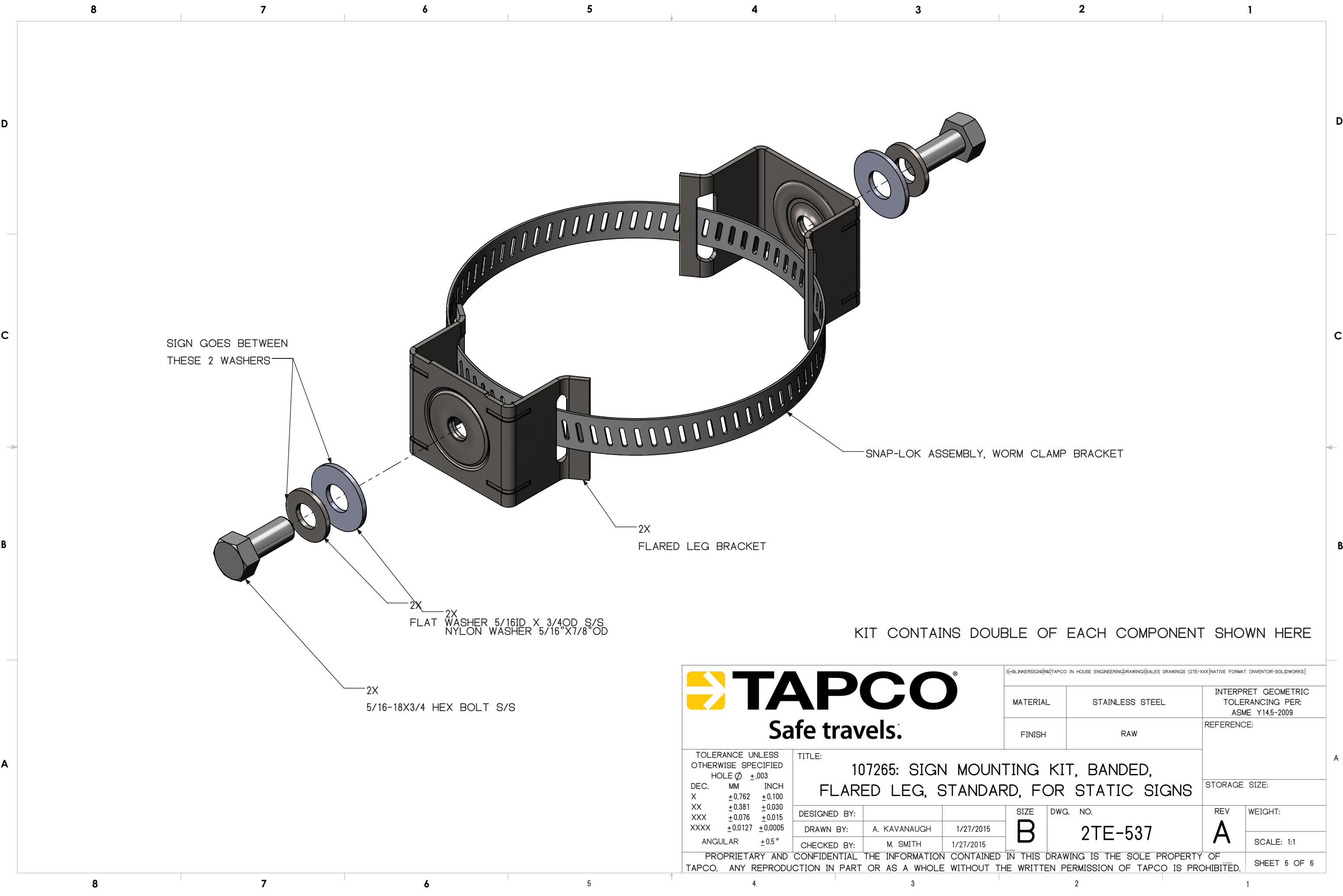
WEIGHT:

SCALE: 1:4

PROPRIETARY AND CONFIDENTIAL THE INFORMATION CONTAINED IN THIS DRAWING IS THE SOLE PROPERTY OF TAPCO. ANY REPRODUCTION IN PART OR AS A WHOLE WITHOUT THE WRITTEN PERMISSION OF TAPCO IS PROHIBITED.

SHEET 1 OF 1





SIGN GOES BETWEEN
THESE 2 WASHERS

SNAP-LOK ASSEMBLY, WORM CLAMP BRACKET

2X
FLARED LEG BRACKET

2X
2X
FLAT WASHER 5/16ID X 3/4OD S/S
NYLON WASHER 5/16"X7/8"OD

2X
5/16-18X3/4 HEX BOLT S/S

KIT CONTAINS DOUBLE OF EACH COMPONENT SHOWN HERE



TAPCO
Safe travels.

TOLERANCE UNLESS OTHERWISE SPECIFIED		
HOLE ϕ $\pm .003$		
DEC.	MM	INCH
X	$\pm .762$	$\pm .100$
XX	$\pm .381$	$\pm .030$
XXX	$\pm .076$	$\pm .015$
XXXX	$\pm .0127$	$\pm .0005$
ANGULAR		$\pm .5^{\circ}$

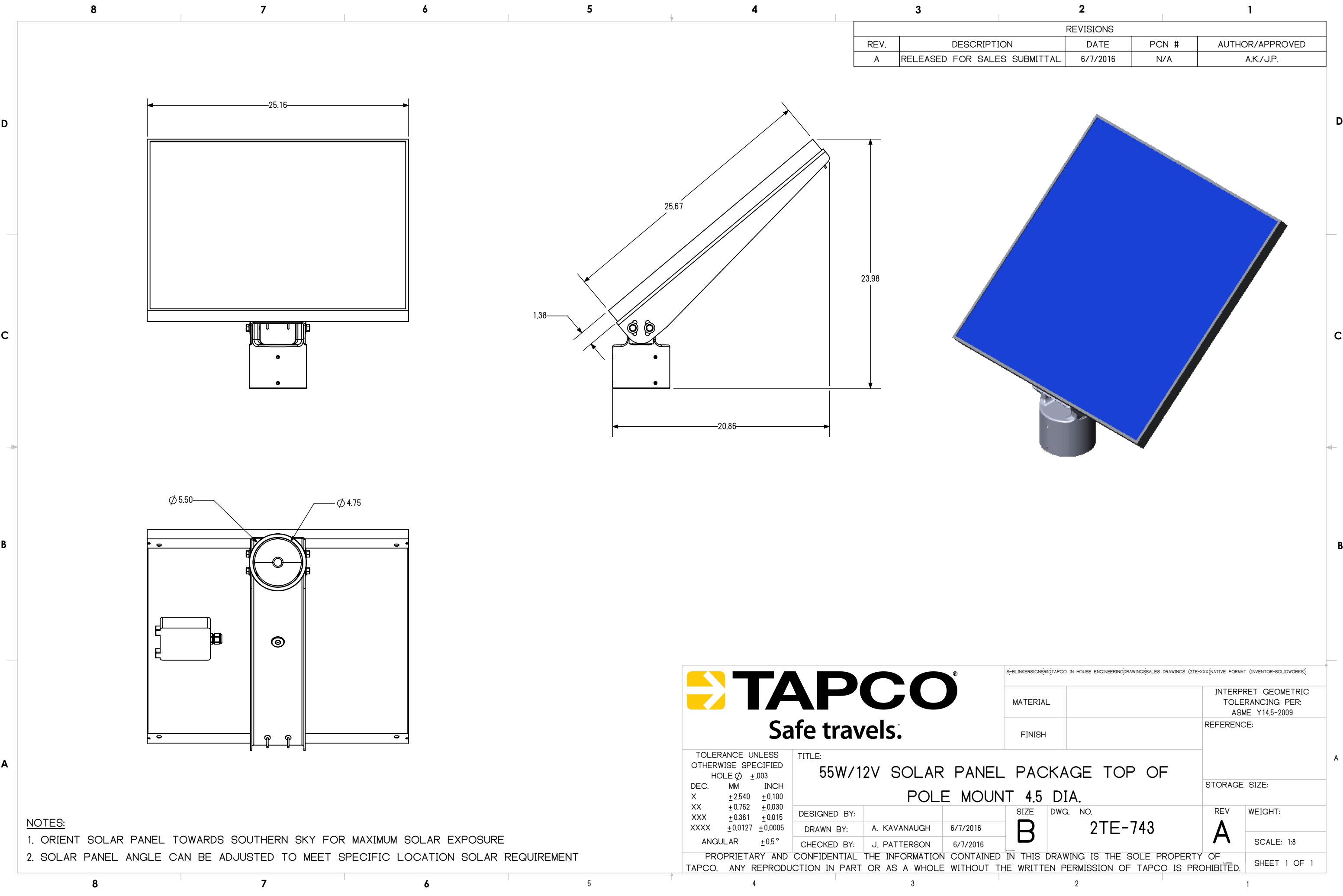
TITLE:
107265: SIGN MOUNTING KIT, BANDED,
FLARED LEG, STANDARD, FOR STATIC SIGNS

DESIGNED BY:		
DRAWN BY:	A. KAVANAUGH	1/27/2015
CHECKED BY:	M. SMITH	1/27/2015

SIZE	DWG. NO.
B	2TE-537

REV	WEIGHT:
A	SCALE: 1:1

PROPRIETARY AND CONFIDENTIAL THE INFORMATION CONTAINED IN THIS DRAWING IS THE SOLE PROPERTY OF TAPCO. ANY REPRODUCTION IN PART OR AS A WHOLE WITHOUT THE WRITTEN PERMISSION OF TAPCO IS PROHIBITED.



REVISIONS				
REV.	DESCRIPTION	DATE	PCN #	AUTHOR/APPROVED
A	RELEASED FOR SALES SUBMITTAL	6/7/2016	N/A	A.K./J.P.

- NOTES:
- ORIENT SOLAR PANEL TOWARDS SOUTHERN SKY FOR MAXIMUM SOLAR EXPOSURE
 - SOLAR PANEL ANGLE CAN BE ADJUSTED TO MEET SPECIFIC LOCATION SOLAR REQUIREMENT



TOLERANCE UNLESS OTHERWISE SPECIFIED		
HOLE ϕ \pm .003		
DEC.	MM	INCH
X	\pm 2.540	\pm 0.100
XX	\pm 0.762	\pm 0.030
XXX	\pm 0.381	\pm 0.015
XXXX	\pm 0.0127	\pm 0.0005
ANGULAR		\pm 0.5°

TITLE:
55W/12V SOLAR PANEL PACKAGE TOP OF
POLE MOUNT 4.5 DIA.

DESIGNED BY:		
DRAWN BY:	A. KAVANAUGH	6/7/2016
CHECKED BY:	J. PATTERSON	6/7/2016

SIZE
B

DWG. NO.
2TE-743

REV
A

WEIGHT:
SCALE: 1:8

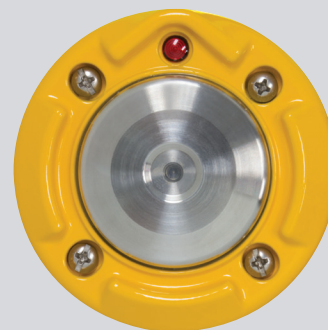
PROPRIETARY AND CONFIDENTIAL THE INFORMATION CONTAINED IN THIS DRAWING IS THE SOLE PROPERTY OF TAPCO. ANY REPRODUCTION IN PART OR AS A WHOLE WITHOUT THE WRITTEN PERMISSION OF TAPCO IS PROHIBITED.

SHEET 1 OF 1

BULLDOG PUSH BUTTON WITH LED

SPECIFICATIONS

POWER INPUT	12 to 36VDC (from control circuit)
PUSH BUTTON	Vandal resistant, ADA compliant
ACTIVATION CONFIRMATION	Red LED and beep confirmation activated when push button is pressed
INSTRUCTIONAL SIGN	9" x 12"; retroreflective sheeting with tamper-resistant mounting screws. Sold separately (PN: 100202)
OPERATING FORCE	3 pounds maximum
PEAK CURRENT DRAW	~350mA
BUTTON ENCLOSURE	Aluminum, powder coated
BUTTON MATERIAL	316 stainless steel
INSTALLATION	2 holes on 2.0" centers, tapped ¼-20 plus ½" or larger hole for wire access
PUSH BUTTON OUTPUT	Driven low to ground when the push button is pressed
OPERATING TEMPERATURE RANGE	-30°F to 165°F (-34°C to 74°C)
DIMENSIONS	3.4" W x 0.9"H x 0.9"D



BULLDOG PUSH BUTTON



R10-25 SIGN
PN: 100202

BLINKERBEAM® WIRELESS RADIO

SPECIFICATIONS

POWER INPUT	5VDC
INPUT	1 digital input, micro USB
OUTPUTS	2 digital output lines, host serial lines for OTA serial
PROGRAMMABILITY	Locally using USB port or front-mounted joystick
LCD DISPLAY	4 lines at 21 characters per line
OPERATION POWER MODES	3 levels available, 0.25, 0.5 or 1 watt
CONNECTIVITY	Activates warning LEDs concurrently
FREQUENCY	License free 900 MHz Frequency Hopping Spread Spectrum with 10 different RF patterns to prevent interference between collocated radio systems
RANGE	900 feet or longer with optional antenna
SERIAL DATA RATE	19,200Baud
STATUS LEDS	Red, green, yellow, amber
FCC ID	2ANWN-02ANWN
AVAILABLE ANTENNAS	6dBi Omni - Fiberglass 3dBi Omni Whip - RPSMA 3dBi Omni Low Profile 10.64dBi Yagi
OPERATING TEMPERATURE	-40°F to 176°F (-40°C to 80°C); less than 90% RH
DIMENSIONS	3.2"W x 3.7"H x 2.5"D



IWS CONTROLLER

SPECIFICATIONS

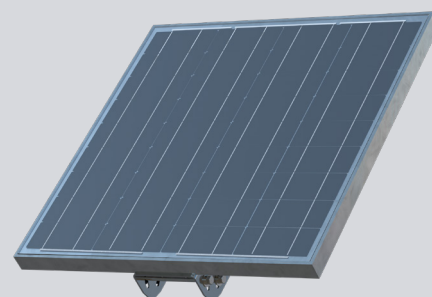
POWER	6V and 12VDC with power indicator light
INPUTS	2 digital inputs
OUTPUTS	2x two-channel (able to drive two warnings per output)
PROGRAMMABILITY	Locally using serial input (RS232) or remotely using BlinkLink® via cell modem
PROGRAM ACTIVATION OPTIONS	24/7, Dusk 'til Dawn, BlinkLink® Scheduling, Time Clock, Custom Input
LED-WARNING CONTROL COMPATIBILITY	BlinkerSign®, BlinkerBeacon™, RRFB-XL2™
DIMMABILITY	Auto-adjustable via solar panel (6V systems) Auto-adjustable via photocell sensor (12V systems)
INTERNAL SYSTEM CLOCK	Integrated with on-board battery backup
SELF-DIAGNOSTIC CAPABILITY	Internal temperature monitor
DAYLIGHT SAVING TIME	User programmable
OPERATING TEMPERATURE RANGE	-40°F to 176°F (-40°C to 80°C)
ENCLOSURE	IP67 rated
ENCLOSURE DIMENSIONS	3.2"W x 3.7"H x 2.5"D



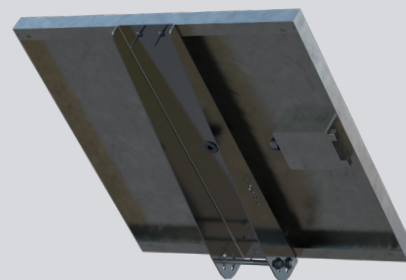
SOLAR PANEL 55W

SPECIFICATIONS

POWER	55W minimum
NOMINAL VOLTAGE	12V
OPEN CIRCUIT VOLTAGE	22.1V
SHORT CIRCUIT CURRENT	3.31A
MAXIMUM POWER VOLTAGE	18.18V
MAXIMUM POWER CURRENT	3.1A
GLASS	Tempered
FRAME	Anodized aluminum
JUNCTION BOX	IP65, UL94-5VA material
WEIGHT	14 pounds
MOUNTING HARDWARE	Various options available
OPERATING TEMPERATURE RANGE	-40°F to 194°F (-40°C to 90°C)
DIMENSIONS	25"W x 26"H x 1.5"D



FRONT



BACK

BATTERY 48Ah

Gelled Electrolyte

SPECIFICATIONS

VOLTAGE	12V
CAPACITY AT C/100	48Ah
VENT	Self sealing
TERMINAL	C
CONSTRUCTION	Valve regulated and spill proof. Approved for transport by air - DOT, IATA and ICAB certified.
WEIGHT	32 pounds
DIMENSIONS	7.76"L x 6.62"W x 6.87"H
OPERATING TEMPERATURE RANGE	-40°F to 176°F (-40°C to 80°C)



TAPCO RRFB-XL2™ CAPACITY RATINGS

RATED EQUIPMENT

TAPCO RRFB CONTROLLER ASSEMBLY:

Solid State Flash Controller	Back-to-Back RRFB-XL2™ Light Bars
Solar Charge Regulator	BullDog Push Button
900MHz BlinkerBeam® Wireless Radio	55W 12V Solar Panel
	48Ah 12V VRLA Battery

MAXIMUM DAILY ACTIVATIONS PER REGION

Northern Climates - Up to 1,000 Activations Per Day

Central Climates - Up to 1,700 Activations Per Day

Southern Climates - Up to 3,400 Activations Per Day

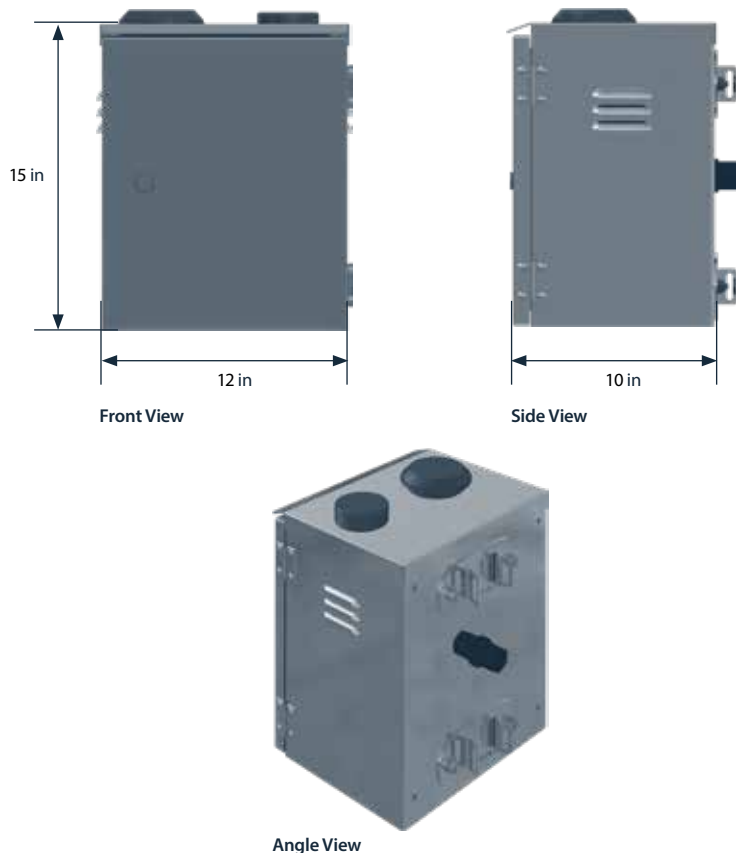
GENERAL LOCATION	DAILY ACTIVATIONS (20 SECONDS EACH)	RATED AUTONOMY (DAYS)	GENERAL LOCATION	DAILY ACTIVATIONS (20 SECONDS EACH)	RATED AUTONOMY (DAYS)
NORTHERN LATITUDES	100	38	SOUTHERN LATITUDES	1800	7
	200	31		1900	7
	300	25		2000	6
	400	22		2100	6
	500	19		2200	6
	600	17		2300	5
	700	15		2400	5
	800	14		2500	5
	900	13		2600	5
	1000	12		2700	5
CENTRAL LATITUDES	1100	11		2800	5
	1200	10		2900	4
	1300	9		3000	4
	1400	9		3100	4
	1500	8		3200	4
	1600	8		3300	4
	1700	7		3400	4

SOLAR-POWERED RECTANGULAR RAPID FLASHING BEACON

Side-of-pole control cabinet

SIDE-OF-POLE CONTROL CABINET

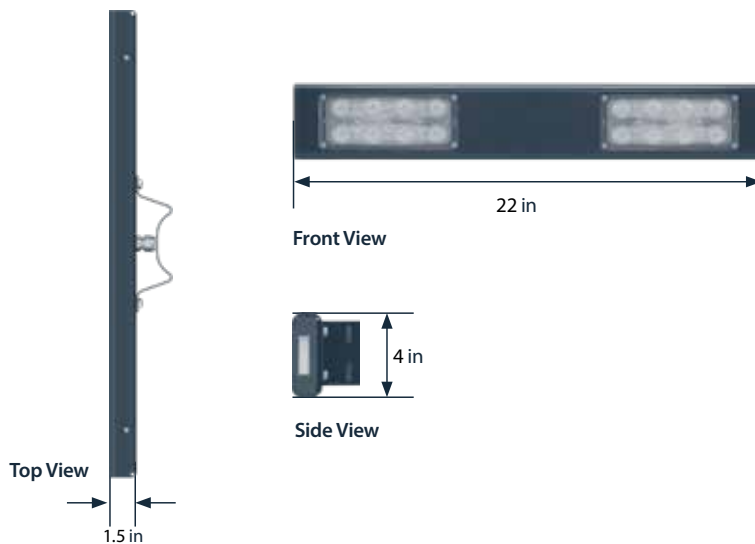
HOUSING	NEMA 3R type aluminum
SOLAR PANEL	55 watt
BATTERY	12v, up to 48Ah
BATTERY LIFESPAN	3 to 5 years, field replaceable
MOUNTING OPTIONS	Various sizes of round, square and wood posts
MOUNTING HARDWARE	Stainless steel hardware
WARRANTY	3-year limited battery warranty 5-year limited system warranty 10-year limited solar panel warranty



RECTANGULAR RAPID FLASHING BEACON: RRFB-XL2™

LIGHT BAR HOUSING	Black powder coated aluminum
VEHICLE LED MODULES	7" x 3", 2 arrays of 8 amber LEDs spaced 7" apart, SAE J595 class 1 certified
PEDESTRIAN LED MODULES	1 ¾" x ½", side-viewable, flash simultaneously with vehicle LED (optional, one or both sides)
FLASH PATTERN	WW + S (combination wig-wag and simultaneous flash)
DIMMABLE	Automatically controlled via included photocell sensor
MOUNTING HARDWARE	Various options available
WIND LOAD RATING	Up to 120mph*
OPERATING TEMPERATURE RANGE	-40°F to 122°F

* Dependent upon pole size and system arrangement



BLINKERBEAM® WIRELESS COMMUNICATION

FREQUENCY	900 MHz FHSS (Frequency Hopping Spread Spectrum)
RANGE	900 feet (radio site survey recommended)
CONNECTIVITY	Crosswalk and optional advanced warning LEDs activate concurrently

ACTIVATIONS

PUSH BUTTON ACTIVATION	ADA push button, typical (<120 millisecond)
USER-ACTUATED PUSH BUTTON	XAV2-LED or Bulldog
PASSIVE DETECTION	Wireless bollards

OPTIONAL PROGRAMMING

BlinkLink®	Optional cloud software with cellular modem**
-------------------	---

** Dependent upon system configuration



RRFB-XL2™



BLINKERBEAM®
WIRELESS RADIO



XAV2-LED
PUSH BUTTON

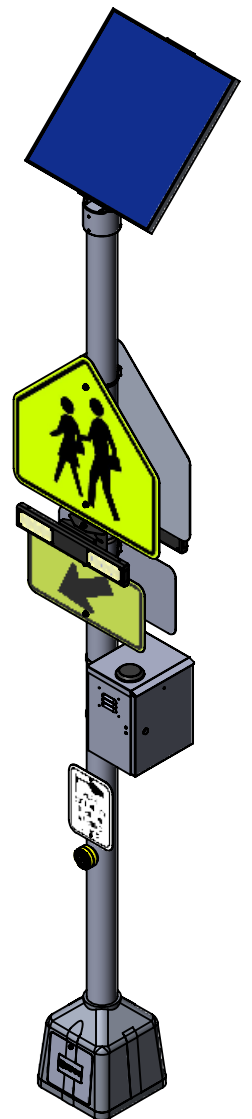
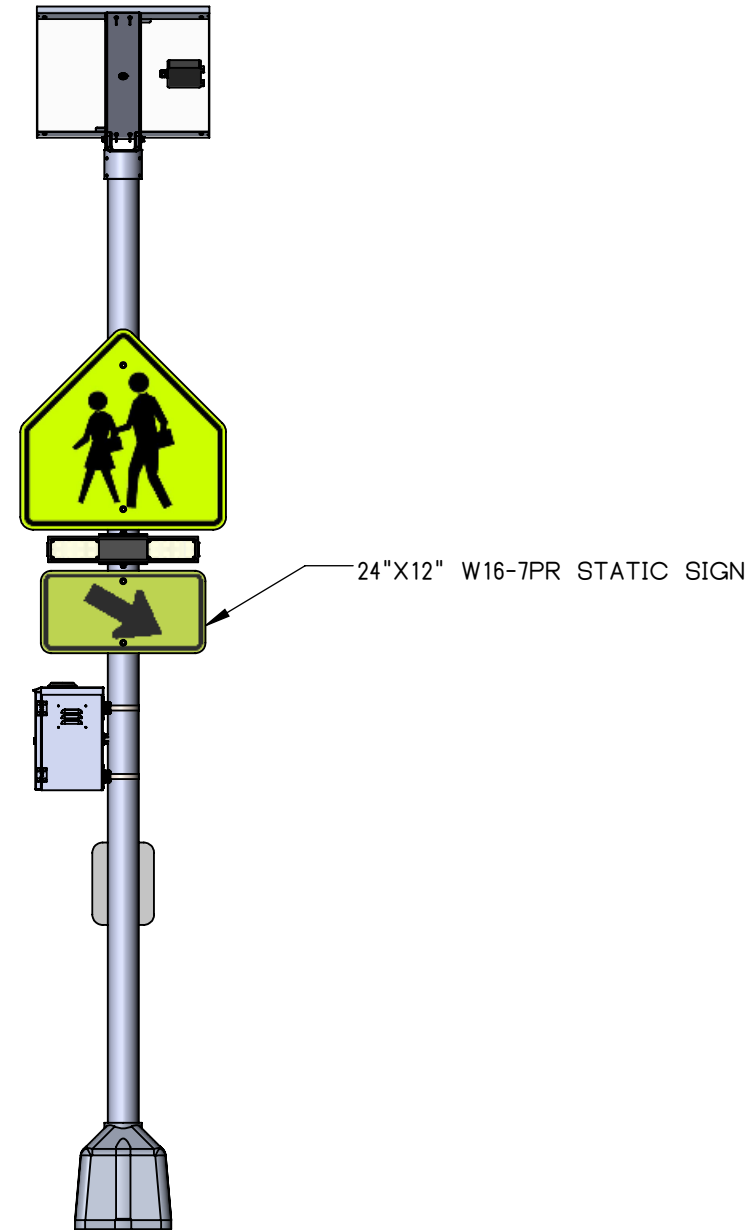
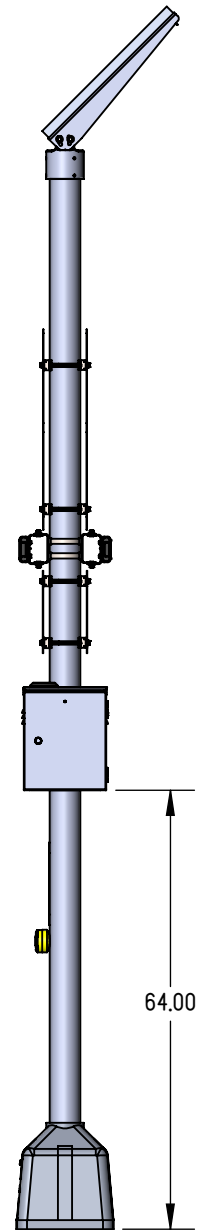
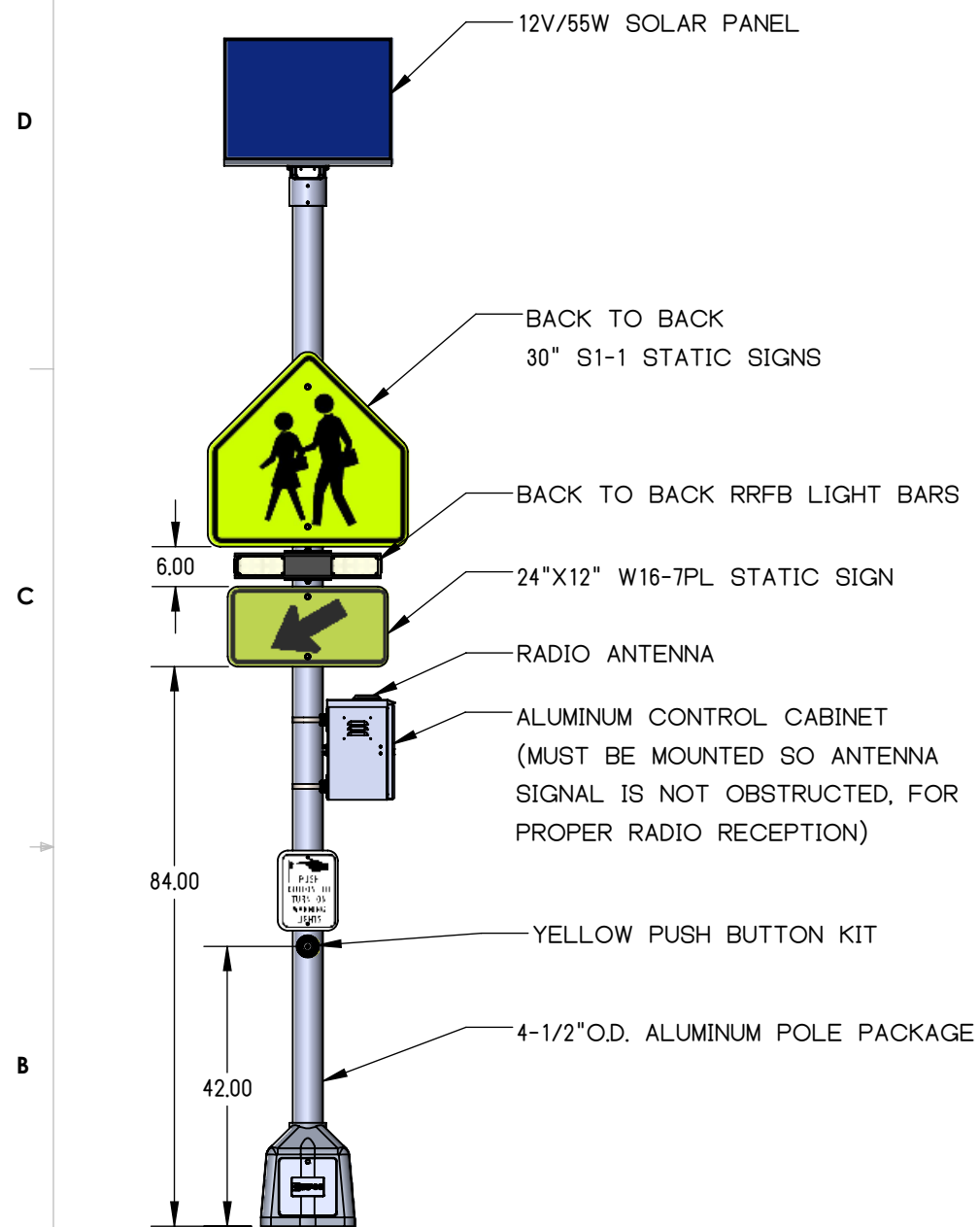


BULLDOG
PUSH BUTTON




(800) 236-0112

TAPCOnet.com



NOTES:

1. ORIENT SOLAR PANEL TOWARDS SOUTHERN SKY FOR MAXIMUM SOLAR EXPOSURE
2. CONTROL CABINET HEIGHT MAY VARY.
3. SNAP LOCKS ARE PROVIDED, STANDARD 3/4" S/S BANDING IS RECOMMENDED
4. J-BOLTS NOT SHOWN
5. ALL DIMENSIONS ARE FOR REFERENCE ONLY
6. STATIC SIGNS NOT INCLUDED IN SYSTEM 



S-ENGINEERING SPECIFICATIONS 600147

MATERIAL

INTERPRET GEOMETRIC
TOLERANCING PER:
ASME Y14.5-2009

REFERENCE:

FINISH

TOLERANCE UNLESS
OTHERWISE SPECIFIED

HOLE Ø	±.003
DEC.	INCH
X	±0.030
XX	±0.015
XXX	±0.005

ANGULAR $\pm 0.5^\circ$

TITLE:	RRFB, SOLAR 55/48, RADIO, SOP, DS, AMBER, PH, H POLE X2 (30" S1-1 ARRANGEMENT)
--------	---

DESIGNED BY:

TAPCO

SIZE

DWG.	NO.
------	-----

B

600147

REV

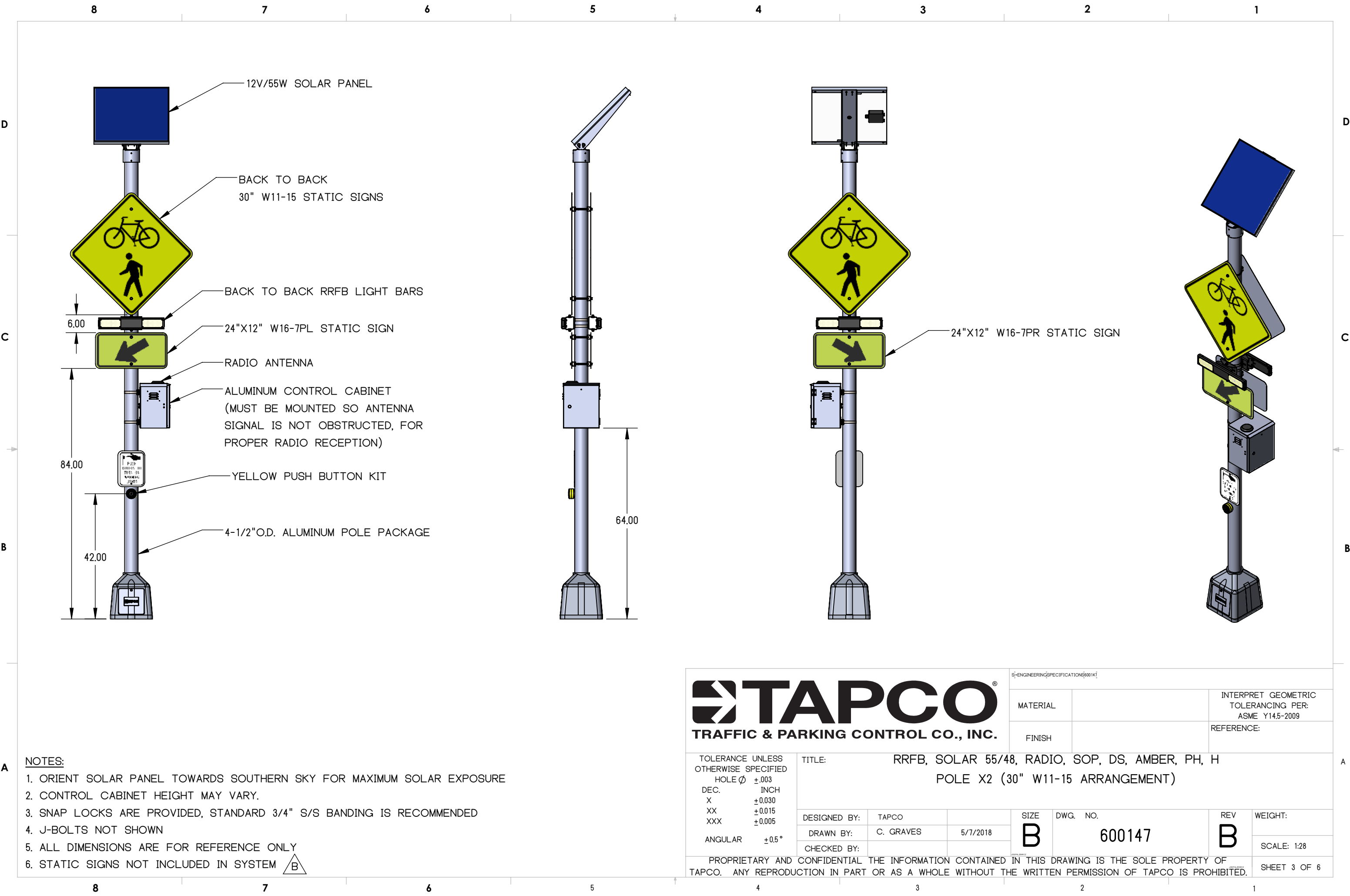
B

WEIGHT:


SCALE: 1:28

PROPRIETARY AND CONFIDENTIAL THE INFORMATION CONTAINED IN THIS DRAWING IS THE SOLE PROPERTY OF TAPCO. ANY REPRODUCTION IN PART OR AS A WHOLE WITHOUT THE WRITTEN PERMISSION OF TAPCO IS PROHIBITED.

SHEET 2 OF 6



- NOTES:**
1. ORIENT SOLAR PANEL TOWARDS SOUTHERN SKY FOR MAXIMUM SOLAR EXPOSURE
 2. CONTROL CABINET HEIGHT MAY VARY.
 3. SNAP LOCKS ARE PROVIDED, STANDARD 3/4" S/S BANDING IS RECOMMENDED
 4. J-BOLTS NOT SHOWN
 5. ALL DIMENSIONS ARE FOR REFERENCE ONLY
 6. STATIC SIGNS NOT INCLUDED IN SYSTEM



TAPCO
TRAFFIC & PARKING CONTROL CO., INC.

ENGINEERING SPECIFICATIONS 600147

MATERIAL		INTERPRET GEOMETRIC TOLERANCING PER: ASME Y14.5-2009
FINISH		REFERENCE:

TOLERANCE UNLESS OTHERWISE SPECIFIED

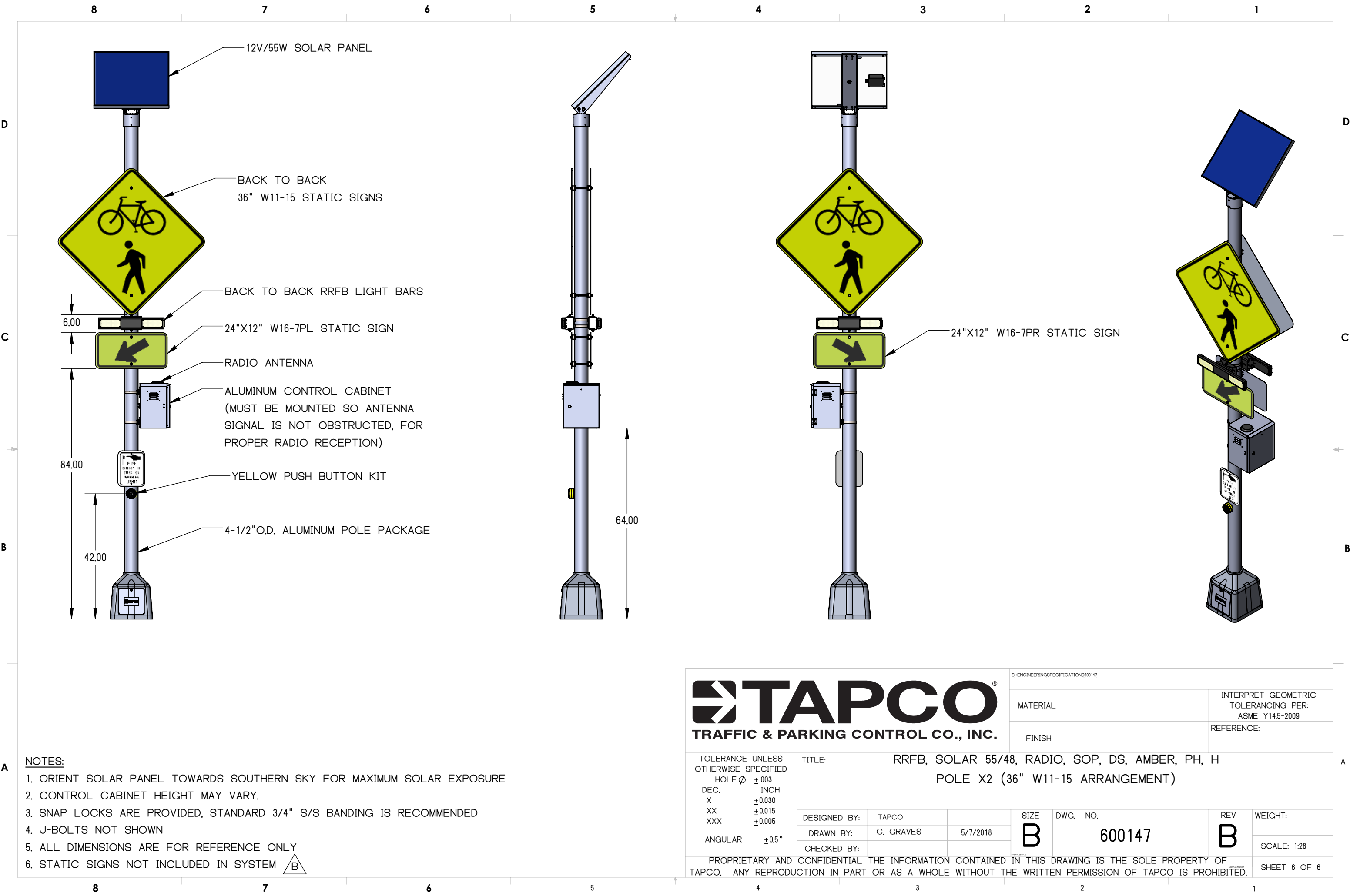
HOLE ϕ	$\pm .003$
DEC.	INCH
X	$\pm .0030$
XX	$\pm .0015$
XXX	$\pm .0005$
ANGULAR	$\pm .5^\circ$

TITLE: RRFB, SOLAR 55/48, RADIO, SOP, DS, AMBER, PH, H POLE X2 (30" W11-15 ARRANGEMENT)


DESIGNED BY:	TAPCO		SIZE	DWG. NO.	REV	WEIGHT:
DRAWN BY:	C. GRAVES	5/7/2018	B	600147	B	SCALE: 1:28
CHECKED BY:						

PROPRIETARY AND CONFIDENTIAL THE INFORMATION CONTAINED IN THIS DRAWING IS THE SOLE PROPERTY OF TAPCO. ANY REPRODUCTION IN PART OR AS A WHOLE WITHOUT THE WRITTEN PERMISSION OF TAPCO IS PROHIBITED.

SHEET 3 OF 6



- NOTES:**
1. ORIENT SOLAR PANEL TOWARDS SOUTHERN SKY FOR MAXIMUM SOLAR EXPOSURE
 2. CONTROL CABINET HEIGHT MAY VARY.
 3. SNAP LOCKS ARE PROVIDED, STANDARD 3/4" S/S BANDING IS RECOMMENDED
 4. J-BOLTS NOT SHOWN
 5. ALL DIMENSIONS ARE FOR REFERENCE ONLY
 6. STATIC SIGNS NOT INCLUDED IN SYSTEM



TAPCO
TRAFFIC & PARKING CONTROL CO., INC.

ENGINEERING SPECIFICATIONS 600147

MATERIAL			INTERPRET GEOMETRIC TOLERANCING PER: ASME Y14.5-2009	
FINISH			REFERENCE:	

TOLERANCE UNLESS OTHERWISE SPECIFIED

HOLE ϕ	$\pm .003$
DEC. INCH	
X	$\pm .0030$
XX	$\pm .0015$
XXX	$\pm .0005$
ANGULAR	$\pm .05^\circ$

TITLE: RRFB, SOLAR 55/48, RADIO, SOP, DS, AMBER, PH, H POLE X2 (36" W11-15 ARRANGEMENT)

DESIGNED BY:	TAPCO		SIZE	DWG. NO.	REV	WEIGHT:
DRAWN BY:	C. GRAVES	5/7/2018	B	600147	B	SCALE: 1:28
CHECKED BY:						

PROPRIETARY AND CONFIDENTIAL THE INFORMATION CONTAINED IN THIS DRAWING IS THE SOLE PROPERTY OF TAPCO. ANY REPRODUCTION IN PART OR AS A WHOLE WITHOUT THE WRITTEN PERMISSION OF TAPCO IS PROHIBITED.

SHEET 6 OF 6

TAPCO Intelligent Warning System Warranty Standard Product

Warranty effective June 8, 2020: TAPCO may update without notice *

Traffic and Parking Control Co., Inc. ("TAPCO") warrants to each purchaser of a standard Intelligent Warning System (the "Product"), that the Product, exclusive of batteries and solar panels, will be free from defects in material and workmanship for a period of five (5) years after the date of the original purchase.** TAPCO warrants to each purchaser of the Product, that the batteries sold with the Product will be free from defects in material and workmanship for a period of three (3) years after the date of the original purchase.

TAPCO warrants to each purchaser of the Product, that the solar panels sold with the Product will be free from defects in material and workmanship for a period of ten (10) years after the date of the original purchase.***

TAPCO warrants accessories, service parts and components purchased separately to be free from defects in material and workmanship for a period of one (1) year after the date of original purchase. If within such warranty periods any part thereof is proved to TAPCO's satisfaction to be defective, such part shall be repaired by TAPCO or its authorized distributor or, at TAPCO's option, replace f.o.b. TAPCO's factory without charge, including labor costs at its standard rate incurred while repairing said Product.

TAPCO's obligation hereunder shall be limited to such repair or replacement and shall be further considered upon TAPCO's receiving written notice of an alleged defect and proof of original purchase within ten (10) days after its discovery and, at TAPCO's option, the return of the allegedly defective part to TAPCO f.o.b. its factory or to its authorized distributor.

This warranty shall not apply to any parts not furnished by TAPCO as well as any damage caused by such parts, or to parts which shall have been repaired or altered by others than TAPCO so as, in TAPCO's judgment, to adversely affect the same; or which shall have been subject to other than normal use or service, negligence, accident or improper installation, care or storage. TAPCO will not be responsible for any expense related to parts or labor that is unrelated to defects in material or workmanship of TAPCO Product.

The foregoing warranties are exclusive and in lieu of all other express and implied warranties. TAPCO's liability is limited expressly to the repair and replacement of defective parts as provided herein. TAPCO shall not be liable for any consequential, incidental, or contingent damages whatsoever, whether for breach of contract, breach of warranty, negligence of other tort, or on any strict liability theory.

This limited warranty does not cover any damage due to: (a) transportation; (b) storage; (c) improper use; (d) failure to follow the product instructions or to perform any preventive maintenance; (e) modifications; (f) unauthorized repair; (g) normal wear and tear; or (h) external causes such as accidents, abuse, technological changes, regulatory changes, or other actions or events beyond our reasonable control.

* This warranty outlines coverage for standard Intelligent Warning Systems. To view warranty coverage for ETO/custom Intelligent Warning Systems, request official documentation via the information listed below or click here if reading online.

** In-road warning lights (IRWLs) will be free from defects in the material and workmanships for a period of three (3) years after the date of the original purchase. This warranty shall be void if TAPCO does not provide on-site supervision of IRWL installation.

*** TAPCO will honor any APL-specific warranty terms that vary from the standard warranty.