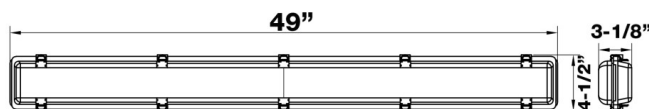




4' LED Linear Vapor Tight

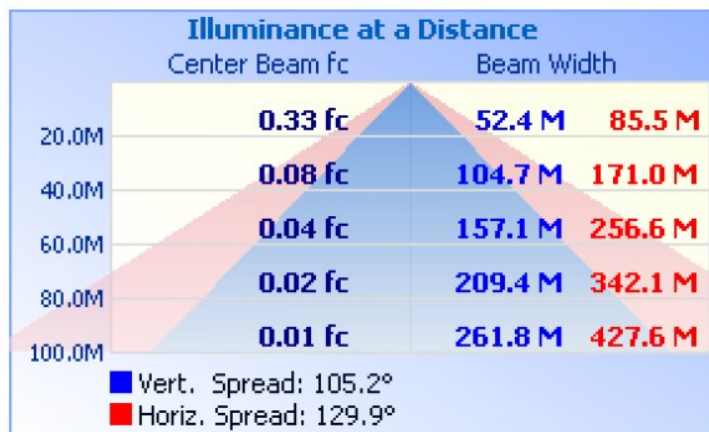
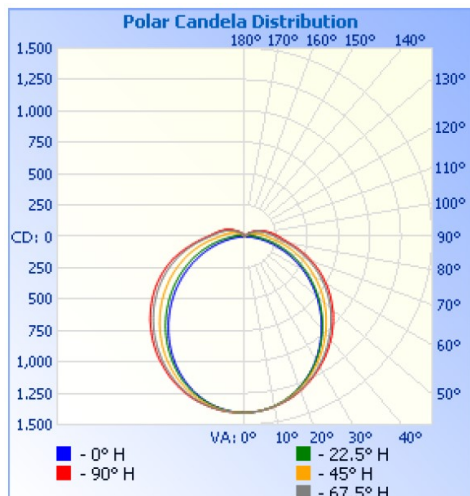
40 WATT 5000K 120-277V



- 0-10V Dimming
- Polycarbonate Lens with high flame retardant paint
- Heavy Duty Polycarbonate Housing & Stainless Steel Clips
- High Quality LED chips provide high efficiency
- Surface Mount Brackets Included
- 50,000+ Hour LED Life Expectancy
- IP65 Wet Location Rated
- cULus Listed
- 5 Year Warranty

Part#	Housing Color	Wattage	Lumens	CCT	Voltage	Beam Angle	Lumens/ Watt	
71901A	White	40	5000	5000	120-277	106° x 133°	125	

PHOTOMETRY



4' LED Linear Vapor Tight

40 WATT 5000K 120-277V

Technical Specifications:

Electrical:

Input Voltage: 120 thru 277

Current: .0.36A @ 120V

Frequency: 60Hz

Power Factor: ≥ 0.9

THD: 11% @ 120V

Product Parameters:

40 Watts

Efficacy: 125 lumens per watt

50,000+ LED Life Span

CCT: 5000k (Cool White)

Chromaticity Measurements:

Beam Angle: 106° x 133°

BUG Rating: B2-U5-G2

CRI: >81

R9: 0

DUV: 0.0031

Chromaticity (x,y): $x=0.3440$; $y=0.3569$

Chromaticity (u,v): $u=0.2087$; $v=0.4871$

Component Specifications:

LED: SMD2835

Driver: 100-277V 50-60HZ

Driver Output Volts: 46V

Driver Output Amps: 800 mA

LED Input Volts: 5.6V

LED Input Amps: 62.5 mA

Surge Protection Volts: 2.5KV

Dimming: 0-10V

Operating Temperature:

Minimum Starting -22°F - 104°F

Construction:

Housing: Polycarbonate Housing and Stainless Steel Clasps

IP Rating: IP65 Wet Location

Lens Material: Polycarbonate Diffused/Frosted Lens

Mounting: Surface Mount Brackets Included

Listings: UL Listed

Accessories:

Emergency Battery Backup: Cat# 71915A

Internal Motion Sensor: Cat# 71721A

Internal Motion Sensor Remote Control: Cat# 71719A

Carton Qty: 6

Weight: 3.5 lb

Warranty:

Morris Products carries a 5 year warranty from date of purchase against defects in materials and workmanship (assuming normal and proper usage).