

UFO High Bay - Gen 3

Available 6/30



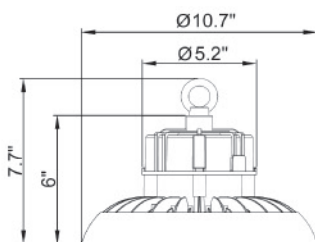
HIGH BAY LIGHTING



Polycarbonate Lens & Cover
Sold Separately



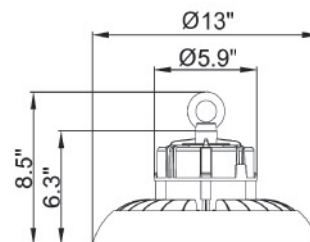
60° & 120° Aluminum Reflectors
Sold Separately



100 Watts



90° Directed Optics Lens
Sold Separately



150 Watts

- Samsung 2835 LEDs
- Integral Cooling Fin Releases Heat Efficiently to Maintain the Life of LEDs/Driver
- Corrosion Resistant Die Cast Aluminum Housing
- Superior Architectural Bronze Powder Coat Finish
- Stainless Steel Hardware
- Eye-Hook Mount - M10 Thread
- Operation Temp: -40°F - 131°F
- 50,000+ Hour LED Life Expectancy
- 0-10V Dimmable

- Input Voltage: 120/208/240/277 VAC & 347-480V
- Color Temp: 5000K Cool White
- CRI: 84
- Light Pattern: 60° - 120° Beam Spread
- Power Factor: 0.97
- 78" Wire Whip for Easy Install
- IP65 (NEMA 4X) Dust & Water Tight
- cULus Listed for Wet Locations
- DLC Listed
- 5 Year Warranty

Cat. No.	Description	Volts	Lumens	Weight (lbs)	Case Qty
100 Watt (Replaces 250W Metal Halide)					
74100	100 Watt High Bay	120-277V	13,392	9	1
74101	100 Watt High Bay	347-480V	14,311	9	1
74115	120° Aluminum Reflector			2	10
74119	60° Aluminum Reflector			2	10
74123	16" Polycarbonate Prismatic Reflector			3	5
74127	PC Reflector Cover			2	10
74131	90° Medium Distribution Lens			1	40
74110	Mounting Bracket			1.5	10
74113	Safety Tether			.5	100
74135	Wire Guard			2	10
150 Watt (Replaces 400W Metal Halide)					
74102	150 Watt High Bay	120-277V	19,665	9	1
74103	150 Watt High Bay	347-480V	20,444	9	1
74116	120° Aluminum Reflector			2	10
74120	60° Aluminum Reflector			2	10
74124	16" Polycarbonate Prismatic Reflector			3	5
74128	PC Reflector Cover			2	10
74132	90° Medium Distribution Lens			1	40
74111	Mounting Bracket			1.5	10
74113	Safety Tether			.5	100
74136	Wire Guard			2	10