



Bid Number 50-00135306

**TWO (2) YEAR CONTRACT TO PROVIDE PEST CONTROL SERVICES AT
VARIOUS BUILDINGS FOR THE DEPARTMENT OF DRAINAGE**

BID DUE: July 29, 2021 AT 11:00 AM

ATTENTION VENDORS!!!

Please review all pages and respond accordingly, complying with all provisions in the technical specifications and Jefferson Parish Instructions for Bidders and General Terms and Conditions. All bids must be received on the Purchasing Department's eProcurement site, www.jeffparishbids.net, by the bid due date and time. Late bids will not be accepted.

**Jefferson Parish Purchasing Department
200 Derbigny Street
General Government Building, Suite 4400
Gretna, LA 70053
Mark Buttery
MButtery@jeffparish.net
504-364-2810**



CENTRALBIDDING
FROM CENTRAL AUCTION HOUSE

**5000135306 TWO (2) YEAR CONTRACT TO PROVIDE PEST CONTROL
SERVICES AT VARIOUS BUILDING FOR THE DEPARTMENT OF
DRAINAGE**

Jefferson Parish Government

Project documents obtained from www.CentralBidding.com

19-Jul-2021 11:36:16 AM

DATE: 7/16/2021

INVITATION TO BID
THIS IS NOT AN ORDER

Page: 5

BID NO.: 50-00135306

JEFFERSON PARISH

PURCHASING DEPARTMENT
P.O. BOX 9
GRETN, LA. 70054-0009
504-364-2678

VENDOR: Bay Pest Control Company, Inc.

BUYER: MBUTTERY

As per LSA-RS 47:301 et seq., all governmental bodies are excluded from payment of sales taxes to any Louisiana taxing body. Quotations shall be based on F.O.B. Agency warehouse or jobsite, anywhere within the Parish as designated by the Purchasing Department.

JEFFERSON PARISH reserves the right to cancel all or any part of an order if not shipped promptly. No charges will be allowed for parking or cartage unless specified in quotation. The order must not be filled at a higher price than quoted. JEFFERSON PARISH reserves the right to cancel at any time and for any reason by issuing a THIRTY (30) day written notice to the contractor.

JEFFERSON PARISH is expecting all products to be new and all work to be done in workman-like manner, according to standard practices. Any deviations or alteration from the specifications must be indicated on the bid form for each item and upon request, product data for same must be submitted by the time specified by the Purchasing Department.

DELIVERY: FOB JEFFERSON PARISH

INDICATE DELIVERY DATE ON EQUIPMENT AND SUPPLIES _____

INDICATE STARTING TIME (IN DAYS) FOR CONSTRUCTION WORK _____

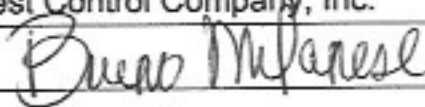
INDICATE COMPLETION TIME (IN DAYS) FOR CONSTRUCTION WORK _____

In the event that addenda are issued with this bid, bidders MUST acknowledge all addenda on the bid form. Bidder must acknowledge receipt of an addendum on the bid form by placing the addendum number as indicated. Failure to acknowledge any addendum on the bid form will result in bid rejection.

Acknowledge Receipt of Addenda: NUMBER: N/A
NUMBER: _____
NUMBER: _____
NUMBER: _____

LOUISIANA CONTRACTOR'S LICENSE NO.: (if applicable) 00011032

***** ALL BIDDERS MUST COMPLETE SECTION BELOW *****

FIRM NAME:	
Bay Pest Control Company, Inc.	
SIGNATURE: (Must be signed here)	TITLE:
	President
PRINT OR TYPE NAME:	
Bruno Milanese	
ADDRESS:	
6820 Washington Avenue	
CITY, STATE:	ZIP:
Ocean Springs, MS	39564
TELEPHONE:	FAX:
(228) 875-8908	(228) 875-1627
EMAIL ADDRESS:	
bruno@baypestcontrol.com (or) marsha@baypestcontrol.net	

TOTAL PRICE OF ALL BID ITEMS: \$ 26,376.00

INVITATION TO BID FROM JEFFERSON PARISH - continued

BID NO.: 50-00135306

SEALED BID

ITEM NUMBER	QUANTITY	U/M	DESCRIPTION OF ARTICLES	UNIT PRICE QUOTED	TOTALS
			TWO (2) YEAR CONTRACT TO PROVIDE PEST CONTROL SERVICES AT VARIOUS BUILDINGS FOR THE DEPARTMENT OF DRAINAGE		
1	1.00	MO	0010 - Labor and materials to provide cost for initial clean out (1st month of service) at: Bonnabel Pumping Station 1500 Beverly Gardens Drive Metairie, LA 70002 Approximately 6,204 square feet TWO (2) YEAR CONTRACT FOR PEST CONTROL SERVICES AT VARIOUS BUILDINGS FOR THE JEFFERSON PARISH DEPARTMENT OF DRAINAGE	30.00	30.00
2	23.00	MO	0020 - Labor and materials to provide a monthly cost for pest control at: Bonnabel Pumping Station	30.00	690.00
3	1.00	MO	0030 - Labor and materials to provide cost for initial clean out (1st month of service) at: Bonnabel Pumping Station Safe Room 1500 Beverly Gardens Drive Metairie, LA 70002 Approximately 396 square feet	8.00	8.00
4	23.00	MO	0040 - Labor and materials to provide a monthly cost for pest control at: Bonnabel Pumping Station Safe Room	8.00	184.00
5	1.00	MO	0050 - Labor and materials to provide cost for initial clean out (1st month of service) at: Bonnabel Pumping Station Resident House 1439 Beverly Gardens Drive Metairie, LA 70002 Approximately 1,750 square feet	20.00	20.00
6	23.00	MO	0060 - Labor and materials to provide a monthly cost for pest control at:	20.00	460.00

INVITATION TO BID FROM JEFFERSON PARISH - continued

BID NO.: 50-00135306

SEALED BID

ITEM NUMBER	QUANTITY	U/M	DESCRIPTION OF ARTICLES	UNIT PRICE QUOTED	TOTALS
7	1.00	MO	Bonnabel Pumping Station Resident House		
			0070 - Labor and materials to provide cost for initial clean out (1st month of service) at: Canal Street Pumping Station 100 Canal Street Metairie, LA 70005 Approximately 900 square feet	25.00	25.00
8	23.00	MO	0080 - Labor and materials to provide a monthly cost for pest control at: Canal Street Pumping Station	25.00	575.00
			0090 - Labor and materials to provide cost for initial clean out (1st month of service) at: Duncan Pumping Station 1800 Joe Yenni Blvd. Kenner, LA 70065 Approximately 7,353 square feet	30.00	30.00
9	1.00	MO	0090 - Labor and materials to provide cost for initial clean out (1st month of service) at: Duncan Pumping Station 1800 Joe Yenni Blvd. Kenner, LA 70065 Approximately 7,353 square feet	30.00	690.00
			0100 - Labor and materials to provide a monthly cost for pest control at: Duncan Pumping Station	8.00	8.00
10	23.00	MO	0100 - Labor and materials to provide a monthly cost for pest control at: Duncan Pumping Station	8.00	184.00
			0110 - Labor and materials to provide cost for initial clean out (1st month of service) at: Duncan Pumping Station Safe Room 1800 Joe Yenni Blvd. Kenner, LA 70065 Approximately 396 square feet	8.00	184.00
11	23.00	MO	0120 - Labor and materials to provide monthly cost for pest control at: DUNCAN PUMP STATION SAFE ROOM	40.00	40.00
			0130 - Labor and materials to provide cost for initial clean out (1st month of		
12	1.00	MO	0130 - Labor and materials to provide cost for initial clean out (1st month of		

INVITATION TO BID FROM JEFFERSON PARISH - continued

BID NO.: 50-00135306

SEALED BID

ITEM NUMBER	QUANTITY	U/M	DESCRIPTION OF ARTICLES	UNIT PRICE QUOTED	TOTALS
			service) at: Elmwood Pumping Station 5400 Caryota Street Metairie, LA 70003 Approximately 22,660 square feet		
14	23.00	MO	0140 - Labor and materials to provide a monthly cost for pest control at: Elmwood Pumping Station	40.00	920.00
15	1.00	MO	0150 - Labor and materials to provide cost for initial clean out (1st month of service) at: Elmwood Pumping Station Safe Room 5400 Caryota Street Metairie, LA 70003 Approximately 396 square feet	8.00	8.00
16	23.00	MO	0160 - Labor and materials to provide a monthly cost for pest control at: Elmwood Pumping Station Safe Room	8.00	184.00
17	1.00	MO	0170 - Labor and materials to provide cost for initial clean out (1st month of service) at: Harahan Pumping Station 1088 Hickory Avenue Harahan, LA 70123 Approximately 15,000 square feet	35.00	35.00
18	23.00	MO	0180 - Labor and materials to provide a monthly cost for pest control at: Harahan Pumping Station	35.00	805.00
19	1.00	MO	0181 - Labor and materials to provide cost for initial clean out (1st month of service) at: Harahan Pumping Station Resident House	25.00	25.00

INVITATION TO BID FROM JEFFERSON PARISH - continued

BID NO.: 50-00135306

SEALED BID

ITEM NUMBER	QUANTITY	U/M	DESCRIPTION OF ARTICLES	UNIT PRICE QUOTED	TOTALS
20	23.00	MO	1200 Genores Drive Harahan, LA 70123 Approximately 1,240 square feet		
			0182 - Labor and materials to provide monthly cost for pest control at:	25.00	575.00
21	1.00	MO	Harahan Pumping Station Resident House 1200 Genores Drive Harahan, LA 70123		
			0190 - Labor and materials to provide cost for initial clean out (1st month of service) at:	20.00	20.00
22	23.00	MO	Parish Line Pumping Station 3100 Grand Lake Blvd. Kenner, LA 70065 Approximately 2,304 square feet		
			0200 - Labor and materials to provide a monthly cost for pest control at:	20.00	460.00
23	1.00	MO	Parish Line Pumping Station		
			0210 - Labor and materials to provide cost for initial clean out (1st month of service) at:	35.00	35.00
24	23.00	MO	Suburban Pumping Station 4800 Lake Villa Drive Metairie, LA 70002 Approximately 13,780 square feet		
			0220 - Labor and materials to provide a monthly cost for pest control at:	35.00	805.00
25	1.00	MO	Suburban Pumping Station		
			0230 - Labor and materials to provide cost for initial clean out (1st month of service) at:	8.00	8.00
			Suburban Pumping Station Safe Room 4800 Lake Villa Drive Metairie, LA 70002		

INVITATION TO BID FROM JEFFERSON PARISH - continued

BID NO.: 50-00135306

SEALED BID

ITEM NUMBER	QUANTITY	U/M	DESCRIPTION OF ARTICLES	UNIT PRICE QUOTED	TOTALS
26	23.00	MO	Approximately 396 square feet 0240 - Labor and materials to provide a monthly cost for pest control at:	8.00	184.00
27	1.00	MO	Suburban Pumping Station Safe Room 0250 - Labor and materials to provide cost for initial clean out (1st month of service) at:	20.00	20.00
28	23.00	MO	Suburban Pumping Station Resident House 4205 Avron Blvd. Metairie, LA 70006 Approximately 1,800 square feet 0260 - Labor and materials to provide monthly cost for pest control at:	20.00	460.00
29	1.00	MO	Suburban Pumping Station Resident House 0270 - Labor and materials to provide cost for initial clean out (1st month of service) at:	45.00	45.00
30	23.00	MO	Eastbank Pumping Station Field Office 4800 Lake Villa Drive Metairie, LA 70002 Approximately 5,304 square feet 0280 - Labor and materials to provide a monthly cost for pest control at:	45.00	1035.00
31	1.00	MO	Eastbank Pumping Station Field Office 0290 - Labor and materials to provide cost for initial clean out (1st month of service) at:	45.00	45.00
32	23.00	MO	Eastbank Drainage Field Office 4901 Jefferson Highway Suite D Jefferson, LA 70121 Approximately 12,000 square feet 0300 - Labor and materials to provide a monthly cost for pest control at:	45.00	1035.00

INVITATION TO BID FROM JEFFERSON PARISH - continued

BID NO.: 50-00135306

SEALED BID

ITEM NUMBER	QUANTITY	U/M	DESCRIPTION OF ARTICLES	UNIT PRICE QUOTED	TOTALS
			Eastbank Drainage Field Office		
33	1.00	MO	0310 - Labor and materials to provide cost for initial clean out (1st month of service) at: Ames Pumping Station 5100 Rochester Drive Marrero, LA 70072 Approximately 3,780 square feet	25.00	25.00
34	23.00	MO	0320 - Labor and materials to provide a monthly cost for pest control at: Ames Pumping Station	25.00	575.00
35	1.00	MO	0330 - Labor and materials to provide cost for initial clean out (1st month of service) at: Ames Pumping Station Safe Room 5100 Rochester Drive Marrero, LA 70072 Approximately 533 square feet	8.00	8.00
36	23.00	MO	0340 - Labor and materials to provide a monthly cost for pest control at: Ames Pumping Station Safe Room	8.00	184.00
37	1.00	MO	0350 - Labor and materials to provide cost for initial clean out (1st month of service) at: Ames Pumping Station Resident House 3068 Mt. Kennedy Drive Marrero, LA 70072 Approximately 2,025 square feet	20.00	20.00
38	23.00	MO	0360 - Labor and materials to provide a monthly cost for pest control at: Ames Pumping Station Resident House	20.00	460.00
39	1.00	MO	0370 - Labor and materials to provide cost for initial clean out (1st month of	25.00	25.00

INVITATION TO BID FROM JEFFERSON PARISH - continued

BID NO.: 50-00135306

SEALED BID

ITEM NUMBER	QUANTITY	U/M	DESCRIPTION OF ARTICLES	UNIT PRICE QUOTED	TOTALS
			service) at: Bayou Segnette #1 Pumping Station 801 Louisiana Street Westwego, LA 70094 Approximately 7,584 square feet		
40	23.00	MO	0380 - Labor and materials to provide a monthly cost for pest control at:	25.00	575.00
			Bayou Segnette #1 Pumping Station		
41	1.00	MO	0390 - Labor and materials to provide cost for initial clean out (1st month of service) at:	25.00	25.00
			Bayou Segnette #2 Pumping Station 801 Louisiana Street Westwego, LA 70094 Approximately 7,584 square feet		
42	23.00	MO	0400 - Labor and materials to provide a monthly cost for pest control at:	25.00	575.00
			Bayou Segnette #2 Pumping Station		
43	1.00	MO	0410 - Labor and materials to provide cost for initial clean out (1st month of service) at:	8.00	8.00
			Bayou Segnette Pump Station Safe Room 801 Louisiana Street Westwego, LA 70094 Approximately 533 square feet		
44	23.00	MO	0420 - Labor and materials to provide a monthly cost for pest control at:	8.00	184.00
			Bayou Segnette Pump Station Safe Room		
45	1.00	MO	0430 - Labor and materials to provide cost for initial clean out (1st month of service) at:	20.00	20.00
			Bayou Segnette P/S Resident House		

INVITATION TO BID FROM JEFFERSON PARISH - continued

BID NO.: 50-00135306

SEALED BID

ITEM NUMBER	QUANTITY	U/M	DESCRIPTION OF ARTICLES	UNIT PRICE QUOTED	TOTALS
			1008 Drake Avenue Westwego, LA 70094 Approximately 2,700 square feet		
46	23.00	MO	0440 - Labor and materials to provide a monthly cost for pest control at:	20.00	460.00
			Bayou Segnette P/S Resident House		
47	1.00	MO	0450 - Labor and materials to provide cost for initial clean out (1st month of service) at:	30.00	30.00
			Cousins #1 Pumping Station 2466 Destrehan Avenue Harvey, LA 70058 Approximately 5,920 square feet		
48	23.00	MO	0460 - Labor and materials to provide a monthly cost for pest control at:	30.00	690.00
			Cousins #1 Pumping Station		
49	1.00	MO	0470 - Labor and materials to provide cost for initial clean out (1st month of service) at:	30.00	30.00
			Cousins #2 Pumping Station 2466 Destrehan Avenue Harvey, LA 70058 Approximately 5,920 square feet		
50	23.00	MO	0480 - Labor and materials to provide a monthly cost for pest control at:	30.00	690.00
			Cousins #2 Pumping Station		
51	1.00	MO	0490 - Labor and materials to provide cost for initial clean out (1st month of service) at:	30.00	30.00
			Cousins #3 Pumping Station 2466 Destrehan Avenue Harvey, LA 70058 Approximately 5,920 square feet		
52	23.00	MO	0500 - Labor and materials to provide a monthly cost for pest control at:	30.00	690.00

INVITATION TO BID FROM JEFFERSON PARISH - continued

BID NO.: 50-00135306

SEALED BID

ITEM NUMBER	QUANTITY	U/M	DESCRIPTION OF ARTICLES	UNIT PRICE QUOTED	TOTALS
53	1.00	MO	Cousins #3 Pumping Station		
			0510 - Labor and materials to provide cost for initial clean out (1st month of service) at: Cousins Pumping Station Safe Room 2466 Destrehan Avenue Harvey, LA 70058 Approximately 533 square feet	8.00	8.00
54	23.00	MO	0520 - Labor and materials to provide a monthly cost for pest control at: Cousins Pumping Station Safe Room	8.00	184.00
55	1.00	MO	0530 - Labor and materials to provide cost for initial clean out (1st month of service) at: Estelle #1 Pumping Station 4105 Destrehan Avenue Harvey, LA 70058 Approximately 300 square feet	10.00	10.00
56	23.00	MO	0540 - Labor and materials to provide a monthly cost for pest control at: Estelle #1 Pumping Station	10.00	230.00
57	1.00	MO	0550 - Labor and materials to provide cost for initial clean out (1st month of service) at: Estelle #2 Pumping Station 3850 Destrehan Avenue Harvey, LA 70058 Approximately 5,032 square feet	35.00	35.00
58	23.00	MO	0560 - Labor and materials to provide a monthly cost for pest control at: Estelle #2 Pumping Station	35.00	805.00
59	1.00	MO	0570 - Labor and materials to provide cost for initial clean out (1st month of	8.00	8.00

INVITATION TO BID FROM JEFFERSON PARISH - continued

BID NO.: 50-00135306

SEALED BID

ITEM NUMBER	QUANTITY	U/M	DESCRIPTION OF ARTICLES	UNIT PRICE QUOTED	TOTALS
			service) at: Estelle Pumping Station Safe Room		
60	23.00	MO	0580 - Labor and materials to provide a monthly cost for pest control at: Estelle Pumping Station Safe Room	8.00	184.00
61	1.00	MO	0590 - Labor and materials to provide cost for initial clean out (1st month of service) at: Harvey Pumping Station 1600 Destrehan Avenue Harvey, LA 70058 Approximately 3,596 square feet	30.00	30.00
62	23.00	MO	0600 - Labor and materials to provide a monthly cost for pest control at: Harvey Pumping Station	30.00	690.00
63	1.00	MO	0610 - Labor and materials to provide cost for initial clean out (1st month of service) at: Hero Pumping Station 4644 Peters Road Harvey, LA 70058 Approximately 21,167 square feet	60.00	60.00
64	23.00	MO	0620 - Labor and materials to provide a monthly cost for pest control at: Hero Pumping Station	60.00	1380.00
65	1.00	MO	0630 - Labor and materials to provide cost for initial clean out (1st month of service) at: Hero Pumping Station Safe Room 4644 Peters Road Harvey, LA 70058 Approximately 533 square feet	10.00	10.00
66	23.00	MO	0640 - Labor and materials to provide a monthly cost for pest control at:	10.00	230.00

INVITATION TO BID FROM JEFFERSON PARISH - continued

BID NO.: 50-00135306

SEALED BID

ITEM NUMBER	QUANTITY	U/M	DESCRIPTION OF ARTICLES	UNIT PRICE QUOTED	TOTALS
67	1.00	MO	Hero Pumping Station Safe Room 0650 - Labor and materials to provide cost for initial clean out (1st month of service) at: Lake Cataouatche #1 Pumping Station 3901 Highway 90 Avondale, LA 70094 Approximately 2,575 square feet	25.00	25.00
68	23.00	MO	0660 - Labor and materials to provide a monthly cost for pest control at: Lake Cataouatche #1 Pumping Station	25.00	575.00
69	1.00	MO	0670 - Labor and materials to provide cost for initial clean out (1st month of service) at: Lake Cataouatche #2 Pumping Station 3901 Highway 90 Avondale, LA 70094 Approximately 2,475 square feet	25.00	25.00
70	23.00	MO	0680 - Labor and materials to provide a monthly cost for pest control at: Lake Cataouatche #2 Pumping Station	25.00	575.00
71	1.00	MO	0690 - Labor and materials to provide cost for initial clean out (1st month of service) at: Lake Cataouatche Pump Station Safe Room 3901 Highway 90 Avondale, LA 70094 Approximately 533 square feet	10.00	10.00
72	23.00	MO	0700 - Labor and materials to provide a monthly cost for pest control at: Lake Cataouatch Pump Station Safe Room	10.00	230.00
73	1.00	MO	0710 - Labor and materials to provide a cost for initial clean out (1st month of service) at:	30.00	30.00

INVITATION TO BID FROM JEFFERSON PARISH - continued

BID NO.: 50-00135306

SEALED BID

ITEM NUMBER	QUANTITY	U/M	DESCRIPTION OF ARTICLES	UNIT PRICE QUOTED	TOTALS
			service) at: Planters Pumping Station 268 Bypass Road Belle Chasse, LA 70037 Approximately 6,440 square feet		
74	23.00	MO	0720 - Labor and materials to provide a monthly cost for pest control at:	30.00	690.00
			Planters Pumping Station		
75	1.00	MO	0730 - Labor and materials to provide cost for initial clean out (1st month of service) at:	30.00	30.00
			Planters Pumping Station Safe Room 268 Bypass Road Belle Chasse, LA 70037 Approximately 533 square feet		
76	23.00	MO	0740 - Labor and materials to provide a monthly cost for pest control at:	30.00	690.00
			Planters Pumping Station Safe Room		
77	1.00	MO	0750 - Labor and materials to provide cost for initial clean out (1st month of service) at:	10.00	10.00
			Planters Pumping Station Resident House 268 Bypass Road Belle Chasse, LA 70037 Approximately 1,207 square feet		
78	23.00	MO	0760 - Labor and materials to provide monthly cost for pest control at:	10.00	230.00
			Planters Pumping Station Resident House		
79	1.00	MO	0770 - Labor and materials to provide cost for initial clean out (1st month of service) at:	30.00	30.00
			Westminster Pumping Station		

INVITATION TO BID FROM JEFFERSON PARISH - continued

BID NO.: 50-00135306

SEALED BID

ITEM NUMBER	QUANTITY	U/M	DESCRIPTION OF ARTICLES	UNIT PRICE QUOTED	TOTALS
80	23.00	MO	2050 Watling Drive Marrero, LA 70072 Approximately 4,541 square feet		
			0780 - Labor and materials to provide a monthly cost for pest control at:	30.00	690.00
81	1.00	MO	Westminster Pumping Station		
			0790 - Labor and materials to provide cost for initial clean out (1st month of service) at:	15.00	15.00
82	23.00	MO	Westwego #1 Pumping Station 100 Vic A Pitre Drive Westwego, LA 70094 Approximately 754 square feet		
			0800 - Labor and materials to provide a monthly cost for pest control at:	15.00	345.00
83	1.00	MO	Westwego #1 Pumping Station		
			0810 - Labor and materials to provide cost for initial clean out (1st month of service) at:	20.00	20.00
84	23.00	MO	Westwego #2 Pumping Station 820 Laroussini Street Westwego, LA 70094 Approximately 1,680 square feet		
			0820 - Labor and materials to provide a monthly cost for pest control at:	20.00	460.00
85	1.00	MO	Westwego #2 Pumping Station		
			0830 - Labor and materials to provide cost for initial clean out (1st month of service) at:	10.00	10.00
86	23.00	MO	Westwego Pumping Station Safe Room 820 Laroussini Street Westwego, LA 70094 Approximately 533 square feet		
			0840 - Labor and materials to provide a monthly cost for pest control at:	10.00	230.00

INVITATION TO BID FROM JEFFERSON PARISH - continued

BID NO.: 50-00135306

SEALED BID

ITEM NUMBER	QUANTITY	U/M	DESCRIPTION OF ARTICLES	UNIT PRICE QUOTED	TOTALS
87	1.00	MO	Westwego Pumping Station Safe Room		
			0850 - Labor and materials to provide cost for initial clean out (1st month of service) at: Whitney/Barataria Pumping Station 1301 Engineers Road Belle Chasse, LA 70037 Approximately 8,008 square feet	35.00	35.00
88	23.00	MO	0860 - Labor and materials to provide a monthly cost for pest control at: Whitney/Barataria Pumping Station	35.00	805.00
			0870 - Labor and materials to provide cost for initial clean out (1st month of service) at: Whitney/Barataria P/S Safe Room 1301 Engineers Road Belle Chasse, LA 70037 Approximately 533 square feet	10.00	10.00
89	1.00	MO	0880 - Labor and materials to provide a monthly cost for pest control at: Whitney/Barataria P/S Safe Room	10.00	230.00
			0890 - Labor and materials to provide cost for initial clean out (1st month of service) at: Westbank Pumping Station Field Office 5100 Rochester Drive Marrero, LA 70072 Approximately 4,000 square feet	25.00	25.00
90	23.00	MO	0900 - Labor and materials to provide a monthly cost for pest control at: Westbank Pumping Station Field Office	25.00	575.00
			0910 - Labor and materials to provide cost for initial clean out (1st month of	40.00	40.00

DATE: 7/16/2021

Page: 20

INVITATION TO BID FROM JEFFERSON PARISH - continued

BID NO.: 50-00135306

SEALED BID

ITEM NUMBER	QUANTITY	U/M	DESCRIPTION OF ARTICLES	UNIT PRICE QUOTED	TOTALS
94	23.00	MO	service) at: Westbank Drainage Field Office 1561 River Park Road Bridge City, LA 70094 Approximately 14,400 square feet 0920 - Labor and materials to provide a monthly cost for pest control at: Westbank Drainage Field Office	40.00	920.00

Two (2) year contract for pest control services at various buildings for the Jefferson Parish Department of Public Works-Drainage.

Contact: Clinton Hotard
Phone #: (504)736-6756
Email: CHotard@jeffparish.net

LABOR, MATERIALS, AND EQUIPMENT NECESSARY TO PROVIDE A TWO (2) YEAR CONTRACT FOR PEST CONTROL SERVICES INCLUDING MICE, RATS, SPIDERS, AND RODENTS AT ALL LOCATIONS FOR VARIOUS JEFFERSON PARISH FIELD OFFICE BUILDINGS, PUMP STATIONS, PUMP STATION RESIDENT HOUSES AND PUMP STATION SAFE ROOMS FOR THE DEPARTMENT OF DRAINAGE. COST TO INCLUDE ALL REQUIRED TRAPS.

CONTRACT WILL INCLUDE THE SPRAYING OF EVERY ROOM WITHIN THE BUILDINGS SUCH AS INDIVIDUAL CUBICLES, OFFICES, EQUIPMENT ROOMS, STORAGE AREAS, BREAK ROOMS, INCLUDING THE PERIMETER OF THE OUTSIDE OF EACH BUILDING, PUMP STATION, SAFEROOM, AND RESIDENT HOUSE.

VENDOR MUST MAKE AN APPOINTMENT WITH THE OFFICE BEFORE SPRAYING IN ORDER TO GAIN ACCESS TO ALL ROOMS, BETWEEN THE HOURS OF 7:00 AM – 3:30 PM MONDAY THRU FRIDAY.

THE WORK UNDER THIS CONTRACT SHALL CONFORM WITH ALL PESTICIDE APPLICATION REGULATIONS OF FEDERAL, STATE, AND LOCAL GOVERNMENT AGENCIES, AS WELL AS ALL PESTICIDE GOVERNING AGENCIES SUCH AS FIFRA, LOUISIANA DEPARTMENT OF AGRICULTURE, EPA, ETC.

THE CONTRACT WILL COMBAT AND CONTROL ALL PEST PROBLEMS, INCLUDING BUT NOT LIMITED TO ROACHES, ANTS, WATERBUGS, SILVERFISH, CRICKETS, SPIDERS, EARWIGS, FIREBRATS, FLEAS, PAPER MITES, BOOK LICE, BODY CRABS, MILLIPEDES, GNATS, FRUIT FLIES, BEETLES, MICE, RATS, RODENTS, WASPS, BEES, ETC. THIS CONTRACT DOES NOT INCLUDE TERMITES OR TERMITE TREATMENT.

UPON EXECUTION OF THE CONTRACT, THERE SHALL BE AN INITIAL CLEAN OUT OF ALL BUILDINGS UNDER THIS CONTRACT. THE AREA SERVICES ON THE CLEAN OUT ARE AS FOLLOWS: ALL OFFICES, SNACK BARS, AND VENDING MACHINE AREAS, ALL KITCHEN AND KITCHENETTES, ALL LUNCH ROOMS, ALL KITCHEN EQUIPMENT, ALL FOOD STORAGE AREAS, WAREHOUSE, EQUIPMENT ROOMS, CUSTODIAL CLOSETS, THE CROSSWALKS AND BREEZEWAYS CONNECTING ALL BUILDINGS.



CERTIFICATE OF LIABILITY INSURANCE

DATE (MM/DD/YYYY)

7/29/2021

THIS CERTIFICATE IS ISSUED AS A MATTER OF INFORMATION ONLY AND CONFERS NO RIGHTS UPON THE CERTIFICATE HOLDER. THIS CERTIFICATE DOES NOT AFFIRMATIVELY OR NEGATIVELY AMEND, EXTEND OR ALTER THE COVERAGE AFFORDED BY THE POLICIES BELOW. THIS CERTIFICATE OF INSURANCE DOES NOT CONSTITUTE A CONTRACT BETWEEN THE ISSUING INSURER(S), AUTHORIZED REPRESENTATIVE OR PRODUCER, AND THE CERTIFICATE HOLDER.

IMPORTANT: If the certificate holder is an ADDITIONAL INSURED, the policy(ies) must have ADDITIONAL INSURED provisions or be endorsed. If SUBROGATION IS WAIVED, subject to the terms and conditions of the policy, certain policies may require an endorsement. A statement on this certificate does not confer rights to the certificate holder in lieu of such endorsement(s).

PRODUCER Select Insurance Agency, Inc. 675A White Plains Rd. Scarsdale NY 10583		CONTACT NAME: Certificate Department PHONE (A/C, No, Ext): 914-337-2240 FAX (A/C, No): 914-337-2219 E-MAIL ADDRESS: certificates@selectagency.com	
INSURED Bay Pest Control Company, Inc. PO Box 1612 Ocean Springs MS 39566		INSURER(S) AFFORDING COVERAGE INSURER A: Imperium Insurance Company INSURER B: INSURER C: INSURER D: INSURER E: INSURER F:	
License# BR-849741 BAYPEST-01		NAIC # 35408	

COVERAGES **CERTIFICATE NUMBER: 364304966** **REVISION NUMBER:**

THIS IS TO CERTIFY THAT THE POLICIES OF INSURANCE LISTED BELOW HAVE BEEN ISSUED TO THE INSURED NAMED ABOVE FOR THE POLICY PERIOD INDICATED. NOTWITHSTANDING ANY REQUIREMENT, TERM OR CONDITION OF ANY CONTRACT OR OTHER DOCUMENT WITH RESPECT TO WHICH THIS CERTIFICATE MAY BE ISSUED OR MAY PERTAIN, THE INSURANCE AFFORDED BY THE POLICIES DESCRIBED HEREIN IS SUBJECT TO ALL THE TERMS, EXCLUSIONS AND CONDITIONS OF SUCH POLICIES. LIMITS SHOWN MAY HAVE BEEN REDUCED BY PAID CLAIMS.

INSR LTR	TYPE OF INSURANCE	ADDL BSRK INSD WVD	POLICY NUMBER	POLICY EFF (MM/DD/YYYY)	POLICY EXP (MM/DD/YYYY)	LIMITS
A	<input checked="" type="checkbox"/> COMMERCIAL GENERAL LIABILITY <input type="checkbox"/> CLAIMS-MADE <input checked="" type="checkbox"/> OCCUR <input checked="" type="checkbox"/> Contractual Liab <input checked="" type="checkbox"/> Pollution Liab GEN'L AGGREGATE LIMIT APPLIES PER: <input checked="" type="checkbox"/> POLICY <input type="checkbox"/> PRO-JECT <input type="checkbox"/> LOC <input type="checkbox"/> OTHER:	Y	IIC-GL-07003-00	12/31/2020	12/31/2021	EACH OCCURRENCE \$1,000,000 DAMAGE TO RENTED PREMISES (Per occurrence) \$100,000 MED EXP (Any one person) \$5,000 PERSONAL & ADV INJURY \$1,000,000 GENERAL AGGREGATE \$2,000,000 PRODUCTS - COMP/OP AGG \$2,000,000 \$
A	<input checked="" type="checkbox"/> AUTOMOBILE LIABILITY <input checked="" type="checkbox"/> ANY AUTO <input type="checkbox"/> OWNED AUTOS ONLY <input checked="" type="checkbox"/> HIRED AUTOS ONLY <input type="checkbox"/> SCHEDULED AUTOS NON-OWNED AUTOS ONLY	Y	IIC-CA-01588-00	12/31/2020	12/31/2021	COMBINED SINGLE LIMIT (Per accident) \$1,000,000 BODILY INJURY (Per person) \$ BODILY INJURY (Per accident) \$ PROPERTY DAMAGE (Per accident) \$ \$
A	<input checked="" type="checkbox"/> UMBRELLA LIAB <input checked="" type="checkbox"/> OCCUR <input checked="" type="checkbox"/> EXCESS LIAB <input type="checkbox"/> CLAIMS-MADE <input type="checkbox"/> DED <input type="checkbox"/> RETENTION \$	Y	IIC-EX-00963-00	12/31/2020	12/31/2021	EACH OCCURRENCE \$5,000,000 AGGREGATE \$5,000,000 \$
A	<input checked="" type="checkbox"/> WORKERS COMPENSATION AND EMPLOYERS' LIABILITY ANY PROPRIETOR/PARTNER/EXECUTIVE OFFICER/MEMBER EXCLUDED? (Mandatory in NH) If yes, describe under DESCRIPTION OF OPERATIONS below	Y/N N/A	IIC-WC-01760-00	12/31/2020	12/31/2021	<input checked="" type="checkbox"/> PER STATUTE <input type="checkbox"/> OTHER E.L. EACH ACCIDENT \$1,000,000 E.L. DISEASE - FA EMPLOYEE \$1,000,000 E.L. DISEASE - POLICY LIMIT \$1,000,000
A	Crime		IIC-CR-00110-00	12/31/2020	12/31/2021	Employee Dishonest 250,000

DESCRIPTION OF OPERATIONS / LOCATIONS / VEHICLES (ACORD 101, Additional Remarks Schedule, may be attached if more space is required)

BID# 50-00135305
 Jefferson Parish, its Districts Departments and Agencies under the direction of the Parish President and the Parish Council as additional insured when required by written contract.

CERTIFICATE HOLDER Jefferson Parish Purchasing Department 200 Derbigny St., Suite 4400 Gretna LA 70053	CANCELLATION SHOULD ANY OF THE ABOVE DESCRIBED POLICIES BE CANCELLED BEFORE THE EXPIRATION DATE THEREOF, NOTICE WILL BE DELIVERED IN ACCORDANCE WITH THE POLICY PROVISIONS. AUTHORIZED REPRESENTATIVE
--	--



MIKE STRAIN DVM, COMMISSIONER

Structural Pest Control Commission, 3825 Florida Blvd., Suite 1000, Baton Rouge, LA 70806, (225) 925-4576, FAX (225) 925-1760

STRUCTURAL PEST CONTROL LICENSE:

BRUNO MILANESE
6820 WASHINGTON AVE
OCEAN SPRINGS MS 39564

Date: 12/10/2019

LDAF ID: 00011032

Phone:

Phase(s): LP1-General Pest Control
LP2-Commercial Vertebrate Control
LP3-Termite Control
LP4-Structural Fumigation

3

Please verify information for correctness. If changes are necessary, make corrections and promptly return to issuing agency.

LOUISIANA DEPARTMENT OF AGRICULTURE & FORESTRY

MIKE STRAIN DVM, COMMISSIONER

Structural Pest Control Commission, 3825 Florida Blvd., Suite 1000, Baton Rouge, LA 70806, (225) 925-4576, FAX (225) 925-1760

Be it known that the individual named below has complied with all relevant requirements of the Louisiana Revised Statutes and effective 12/03/2019 through the date(s) indicated is hereby authorized to engage in STRUCTURAL PEST CONTROL in the phases listed.

	Phase(s)	Phase	Expiry Date
BRUNO MILANESE (00011032) 6820 WASHINGTON AVE OCEAN SPRINGS MS 39564 RAY PEST CONTROL CO, INC (00016743)		LP1-General Pest Control	12/31/2021
		LP2-Commercial Vertebrate Control	12/31/2021
		LP3-Termite Control	12/31/2021
		LP4-Structural Fumigation	12/31/2022

Mike Strain
Commissioner

DISPLAY IN PLACE OF BUSINESS





LOUISIANA DEPARTMENT OF AGRICULTURE & FORESTRY

MIKE STRAIN DVM, COMMISSIONER

Structural Pest Control Commission, 5825 Florida Blvd., Suite 3003, Baton Rouge, LA 70806, (225) 925-4578, FAX (225) 925-3360

STRUCTURAL PEST CONTROL PLACE OF BUSINESS PERMIT:

BAY PEST CONTROL CO, INC

Primary Licensee(s):

00011032 BRUNO MILANESE

Date: 06/21/2017

Permit No: 00016743

Phone: (225) 875-8908

Phase(s):

LP1-General Pest Control

LP2-Commercial Vertebrate Control

LP3-Termite Control

LP4-Structural Fumigation

Please verify information for correctness. If changes are necessary, make corrections and promptly return to issuing agency.

LOUISIANA DEPARTMENT OF AGRICULTURE & FORESTRY

MIKE STRAIN DVM, COMMISSIONER

Structural Pest Control Commission, 5825 Florida Blvd., Suite 3003, Baton Rouge, LA 70806, (225) 925-4578, FAX (225) 925-3360

Be it known that the entity named below has complied with all relevant requirements of the Louisiana Revised Statutes and effective 07/01/2017 through 06/30/2018 is hereby authorized to engage in STRUCTURAL PEST CONTROL in the phases listed:

Primary Licensee(s):

00011032 BRUNO MILANESE

Phase(s):

LP1-General Pest Control

LP2-Commercial Vertebrate Control

LP3-Termite Control

LP4-Structural Fumigation

BAY PEST CONTROL CO, INC
6820 WASHINGTON AVE
OCEAN SPRINGS MS 39564



Mike Strain
Commissioner

DISPLAY IN PLACE OF BUSINESS

Permit No: 00016743



Providing Quality Service Since 1955

Qualifications

Bay Pest Control Company, Inc.
3005 Harvard Avenue, Ste 100
Metairie, LA 70006
504-272-6095- Office
ssoldano@baypestcontrol.net
228-875-1627- Fax

Bay Pest Control Company, Inc- Corporate
6820 Washington Avenue
Ocean Springs, MS 39564
228-875-8908-Office
mail@baypestcontrol.net

Bay Pest Control is licensed in the state of Louisiana. Bay Pest Control has provided pest control services since 1955. (60 + years).

The President of Bay Pest Control, Bruno Milanese, is a **certified Entomologist with over 35 year's experience** in the pest control industry.

Bay Pest Control is a member of the Louisiana Pest Management Association, Professional Pest Management Association, National Pest Management Association and the Entomological Association of America. Bay Pest Control is certified by the National Pest Management Association to provide Integrated Pest Management to facilities as a Quality Pest Control Professional, a Green Pest Control Professional, a Food Processing and Handling Professional and is, Integrated Pest Management for schools certified.

Bay Pest Control currently services government buildings, hospitals, day care facilities, research facilities, universities, power plants and many other very sensitive accounts. Bay Pest Control is well versed in servicing government facilities and would be an excellent provider of pest control services for the Jefferson Parish Various Buildings for the Department of Drainage.

The following is a list of **key contact personnel** and company information:

Bruno Milanese, President
bruno@baypestcontrol.net
228-875-8908 Office

Marsha Johnson, Business Manager
marsha@baypestcontrol.net
228-875-8908 Office

Stephen Soldano, Region Manager
ssoldano@baypestcontrol.net
504-272-6095 Office
504-402-7810 Cell

Brandon Anderson, Sales Manager
banderson@baypestcontrol.net
228-875-8908 Office

Donna Lawrence, Office Manager
donna@baypestcontrol.net
504-272-6095 Office

Jimmy Gothard, Service Manager/Quality
jgothard@baypestcontrol.com
504-272-6095

Major Gorgone, Technician
Beau Cupstid, Technician

- Bay Pest Control has **(48) full** time employees with 32 pest control service vehicles and (6) administrative personnel.
- (2) Full-time LA State licensed pest control operators and company owned service vehicles will be assigned to St Tammany Parish Government Buildings with an additional (3) technicians assigned as needed. The technicians reside in the area.

Thank you for your consideration.



the mark of excellence
in pest management

10460 North Street Fairfax, VA 22030
703.352.6762 | qualitypro@pestworld.org
www.qualitypro.org

To Whom It May Concern:

I am writing to notify you that Bay Pest Control Company, Inc. is QualityPro accredited. It has earned the mark of excellence in pest management. As a QualityPro accredited company, Bay Pest Control Company, Inc. has placed itself in the top echelon of pest management companies in the nation. Less than 3% of pest control companies in the US have earned this prestigious designation. QualityPro is the credentialing organization endorsed by the National Pest Management Association to encourage professionalism and recognize excellence in the industry. QualityPro accredited companies voluntarily ascribe to a set of qualifications that go above and beyond government requirements.

As a potential customer, qualifications that may interest you include:

- Checking employee references and motor vehicle records
- Doing criminal background checks on all employees where permitted by law
- Employing only highly-trained, credentialed employees
- Holding an up-to-date insurance policy
- Maintaining a drug-free workplace policy
- Truthful and ethical advertising
- Agreeing to periodic audits ensuring adherence to QualityPro standards

The website, www.qualitypro.org, contains more information about what QualityPro is and what it means to Bay Pest Control Company, Inc.. QualityPro accreditation truly sets Bay Pest Control Company, Inc. apart from non-QualityPro accredited companies.

If you have any questions, please call me at 703-352-6762 or e-mail me at qualitypro@pestworld.org.

Sincerely,

Allison Allen, BCE
Executive Director, QualityPro

Expires 1/2022

Endorsed by



QualityPro is administered by the Foundation for Professional Pest Management and endorsed by the National Pest Management Association. QualityPro is an independent organization that develops good business practices and standards for pest management companies in the US and Canada.

QualityPro



the mark of excellence
in pest management

Presenting this certificate of excellence to

Bay Pest Control Company, Inc.

in acknowledgment of your continuing efforts toward professional excellence in the pest management industry by meeting the requirements to be a QualityPro accredited company. You have achieved the mark of excellence in pest management.

Endorsed by



National Pest Management Association

NPMAQualityPro.org

OFFICIAL SIGNATURE

EXPIRES 1/2022

QualityPro

GREENPRO SERVICE CERTIFICATION



Presenting this certificate of excellence to

Bay Pest Control Company, Inc.

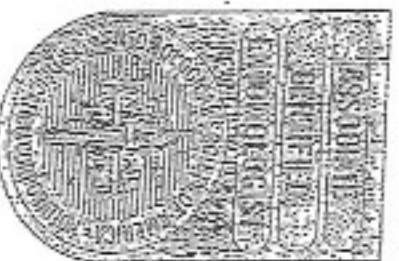
in acknowledgment of your continuing efforts toward professional excellence and environmental awareness in the pest management industry by meeting the requirements to provide GreenPro Certified Service.

OFFICIAL SIGNATURE



EXPIRES 1/2022

ENTOMOLOGICAL SOCIETY OF AMERICA



RECOGNIZES

Bruno V. Mithunese

AS AN

ASSOCIATE CERTIFIED ENTOMOLOGIST
AS RECOGNIZED BY THE ESA CERTIFICATION PROGRAM

CERTIFICATION NUMBER 80764

CERTIFICATION DATE 10/2/2013

[Signature]
DIRECTOR, CERTIFICATION BOARD

October 9, 2013

DATE