

## TEC Professional Services Questionnaire

### A. Project Name and Advertisement Resolution Number:

SOQ NO. 22-010 TO PROVIDE ROUTINE ENGINEERING SERVICES FOR  
**SEWER PROJECTS**  
RESOLUTION 138812

### B. Firm Name & Address where Project work will be performed:



2626 Canal Street, Suite 202  
New Orleans, LA 70119

EF.0002603 (EJES, Inc.)

### C. Name, title, & contact information of Principal, as defined in Section 2-926 of the Jefferson Parish Code of Ordinances, who is a registered, licensed architect, professional engineer, or surveyor in the State of Louisiana:

Edwin B. Jones, PE, MBA | Principal-in-Charge | LA #27489  
Telephone: 214 343-1210 Email: [ejones@ejesinc.com](mailto:ejones@ejesinc.com)

### D. Name and contact information of employee who is a registered and licensed architect, professional engineer, or surveyor in the State of Louisiana in the applicable discipline. A subcontractor may be substituted here only if the advertised Project requires more than one discipline.

Tanita Gilbert-Baker, PE, MBA | President | LA#29350  
Telephone: 504.218.7103 Email: [tbaker@ejesinc.com](mailto:tbaker@ejesinc.com)

### E. Please provide the number of employees whose primary function corresponds with each category:

	<b>1</b>	<b>Administrative</b>		<b>Estimators</b>		<b>Specification Writers</b>
	<b>2</b>	<b>Architects (Licensed)</b>		<b>Geologists</b>		<b>Structural Engineers</b>
		<b>Chemical Engineers</b>		<b>Geotechnical Engineers</b>	<b>2</b>	<b>Graduate Engineers</b>
	<b>5</b>	<b>Civil Engineers</b>		<b>Interior Designers</b>	<b>1</b>	<b>Project Managers</b>
	<b>3</b>	<b>Construction Inspectors</b>		<b>Landscape Architects</b>		<b>Clerical</b>
		<b>Ecologists</b>		<b>Land Surveyor</b>		<b>Grant/Funding Specialist</b>
		<b>Electrical Engineers</b>		<b>Mechanical Engineers</b>		<b>Sanitary Engineers</b>
	<b>2</b>	<b>Engineer Intern</b>		<b>Environmental Engineers</b>		
		<b>Professional Land Surveyors</b>			<b>16</b>	<b>TOTAL</b>

### F. Is this submittal by a JOINT-VENTURE? Please check: YES \_\_\_\_\_ NO ☒

If marked "No" skip to Section I. If marked "yes" complete Sections G-H.

## TEC Professional Services Questionnaire

**G. If submittal is by JOINT-VENTURE, list the firms participating and outline specific areas of responsibility (including administrative, technical, and financial) for each firm. Please attach additional pages if necessary.**

**1.**

N/A

**2.**

**H. Has this JOINT-VENTURE previously worked together? Please check: YES ☐ NO ☐**

**I. List all subcontractors anticipated for this Project. Please note that all subcontractors must submit a fully completed copy of this questionnaire, applicable licenses, and any other information required by the advertisement. See Jefferson Parish Code of Ordinances, Sec. 2-928(a)(3). Please attach additional pages if necessary.**

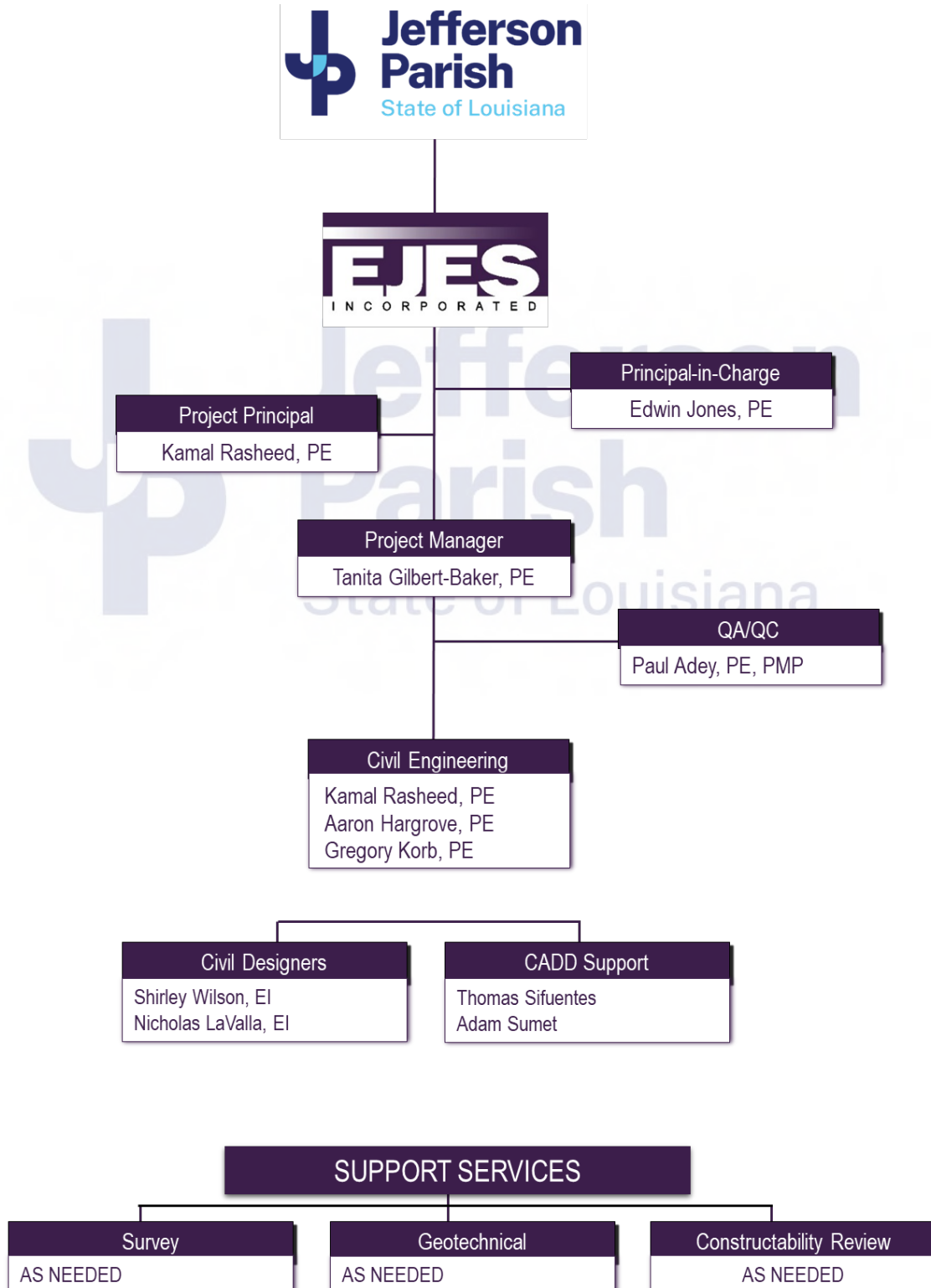
Name & Address:	Specialty:	Worked with Firm Before (Yes or No):
1.		
2.		
3.		
4.		

**J. Please specify the total number of support personnel that may assist in the completion of this Project:**

_____
-------

## TEC Professional Services Questionnaire

K. List the professional in charge, key persons, specialists, and individual consultants anticipated for this Project and provide their relevant information below. If necessary, please attach additional documentation (i.e. resume) that demonstrated the employment history and experience of the Firm's key persons that may assist in the completion of this Project. Please attach additional pages if necessary.



## TEC Professional Services Questionnaire

PROFESSIONAL IN CHARGE OF PROJECT
<b>Name &amp; Title:</b>
Edwin B. Jones, P.E., MBA – Principal-in-Charge
<b>Project Assignment</b>
Principal-in-Charge
<b>Name of Firm with which associated:</b>
<b>EJES, Inc.</b>
<b>Years' experience with this Firm:</b>
25
<b>Education: Degree(s)/Year/Specialization:</b>
B.S./ 1990 / Civil Engineering MBA /2000 / Operations Management
<b>Active Registration: Year first registered/discipline</b>
1997/Civil Engineer – LA #27489   1997/Civil Engineer – TX #82682   2006/Civil Engineer MS #15821
<b>Other experience and qualifications relevant to the proposed Project:</b>
<p>Mr. Jones has over 27 years of experience in Civil Engineering. His experience includes seven (7+) years of engineering experience with the Texas Dept. of Transportation. His experience includes transportation planning, highway design, hydraulics/drainage design, bridge layouts, water/sewer design, site development, and environmental services. Mr. Jones is experienced with engineering analysis and design software including GeoPak, Eagle Point, WINSTORM, THYSIS, HEC RAS, Micro station and AutoCAD.</p> <p><b>BATON ROUGE FORCE MAIN/LIFT STATION IMPROVEMENT</b>   <i>Baton Rouge, LA</i>   <b>Principal-in-Charge</b> for the design of 4870 LF of existing 4" sewer force main with new 6" and 8" force main for Lovett Road Area, Wax Road Area and Sullivan Road Area. The improvements include new air release/vacuum valves, fittings and appurtenances.</p> <p><b>CADDO CORRECTIONAL LIFT STATION</b>   <i>Shreveport, LA</i>   <b>Project Manager</b> for the design of 1,100 LF of new sanitary sewer improvements. Responsible for complete preliminary and final design for City of Shreveport.</p> <p><b>CORIBITT STREET SEWER EXTENSION</b>   <i>Shreveport, LA</i>   <b>Project Manager</b> assisted in the design of 2,900 LF of new sanitary sewer improvements. Responsible for complete preliminary and final design for City of Shreveport</p> <p><b>ALBERT STREET SANITARY SEWER EXTENSION</b>   <i>Shreveport, LA</i>   <b>Principal-in-Charge</b> assisted in the design of 1,700 LF of new sanitary sewer improvements. Assisted in completing preliminary and final design for City of Shreveport.</p> <p><b>MARJORIE STREET LIFT STATION IMPROVEMENTS</b>   <i>Shreveport, LA</i>   <b>Project Manager</b> responsible for the development of final PS&amp;E for the replacement of an existing sanitary sewer lift station, flow monitoring devices, telemetry equipment, 600 LF 6" force main piping and appurtenances.</p> <p><b>MANSFIELD ROAD SEWER IMPROVEMENTS</b>   <i>Shreveport, LA</i>   <b>Principal-in-Charge</b> for design services to replace approximately 700 ft. of an existing 10" sewer line with a 12" sewer line for the Mansfield Road Sewer in the City of Shreveport. We also upgraded approximately 1650 ft. of 8" sewer line. Prepared both the preliminary and final plans. Prepared right-of-way plans for construction. Prepared traffic control plans. Prepared estimate for final construction bidding.</p> <p><b>SOUTHERN HILLS SEWER IMPROVEMENTS</b>   <i>Shreveport, LA</i>   <b>Principal-in-Charge</b> for design to replace approximately 4785 ft. of existing sewer line for the Southern Hills Sewer in the City of Shreveport. Mr. Jones also prepared the preliminary and final plans. Prepared right-of-way plans, plans for construction and traffic control. Prepared estimate for final construction bidding.</p> <p><b>LINDEN AVENUE AND BYERS LATERAL 1995</b>   <i>City of Fort Worth, TX</i>   <b>Principal-in-Charge</b> for the design of 1,550 LF of sanitary sewer improvements. Responsible for complete preliminary and final design for City of Fort Worth.</p>

## TEC Professional Services Questionnaire

### KEY PERSON, SPECIALIST, OR INDIVIDUAL CONSULTANT:

**Name & Title:**

Tanita Gilbert-Baker, PE, MBA – VP Civil Engineering

**Project Assignment**

Project Manager

**Name of Firm with which associated:**

**EJES, Inc.**

**Years' experience with this Firm:**

13

**Education: Degree(s)/Year/Specialization:**

B.S./ 1994 / Civil Engineering

MBA /2007/ Business Administration

**Active Registration: Year first registered/discipline**

2001/Civil Engineer – LA #29350 | 2001/Civil Engineer – TX #88719 | 2015/Civil Engineer MS #26522

**Other experience and qualifications relevant to the proposed Project:**

Ms. Gilbert-Baker is a President of Engineering Services, and she has over 25 years of civil engineering experience specializing in the design and management of municipal street and drainage projects, state highway projects, water/sewer improvements, site planning/design, hydraulic studies and analysis, traffic studies, and airport improvement projects. She has designed and managed projects for private clients as well as local, state, and federal agencies. She has extensive experience in the design and management of roadway and highway drainage projects. She is a licensed engineer in the states of Louisiana, Texas, Arkansas, Mississippi, and Oklahoma. Ms. Baker has designed/managed projects for a wide variety of clients including the Jefferson Parish, City of New Orleans, City of Shreveport, the City of Bossier, Caddo Parish, Bossier Parish, and Desoto Parish. She has designed and managed numerous LaDOTD projects.

**WALLACE INTERCEPTOR STUDY FOR REHABILITATION OF 54" GRAVITY SEWER MAIN & PHASE 1 DESIGN** | Shreveport, LA | **Project Manager** for Pre-Design Study to analyze approximately 37,000 lf of 39-inch to 54-inch diameter gravity sewer main. Responsible for review of pipeline report, manhole inspection reports, sediments reports, and as-built information. Also, responsible for visual inspection and summarizing data to make recommendations for construction techniques and pipeline rehabilitation. Also, managed design services for the rehabilitation of approximately 6,000 lf of 54-inch diameter gravity sewer main via CIPP and the installation of an access road.

**TO1-142-A SEWER MAIN IMPROVEMENTS** | Shreveport, LA | **Project Manager** for the design of the replacement/rehabilitation of approximately 9,162 lf of 8" gravity main, 1,100 lf of 12" gravity main, and 203 lf of 36" gravity main. Additional work includes replacing, rehabilitating, and adding approximately 38 manholes. The location of the proposed work is between Woodfield Dr. and Linwood Ave. from Harrison St. to Browning St. in Shreveport, LA.

**EBWWTP FLOOD PROTECTION** | New Orleans, LA | **Project Manager** provided services to develop complete PS&E documents for replacement of existing 54" and 66" steel influent and effluent pipes for penetration of a new flood protection system at a wastewater treatment plant.

**REPLACEMENT OF WILLOWBROOK, WRIGHT, McCOY & PINES VILLAGES SEWAGE PUMPING STATIONS** | New Orleans, LA | **Project Manager/Engineer** provided extensive professional review of the damages to 11 facilities as a direct result of damages from Hurricane Katrina. Performed design calculations, established design criteria's and provided technical specification for all improvements. Also, responsible for code review and implications and permit requirements.

**SEWER REHABILITATION PROJECTS FERN AVENUE, LINE AVENUE EAST & WEST** | City of Shreveport, LA | **Civil Designer** provided sewer rehabilitation encompassing 3 different sites within the city collection system: The Fern Avenue project consisted of the *rehabilitation on approximately 5,600 linear feet of an existing 30 inch in diameter force main*. The Line East and West consisted of the *rehabilitation of approximately 1,700 linear feet of existing 15-inch diameter gravity line*.

**QUERBES LIFT STATION** | Shreveport, LA | **Project Manager/Engineer** for rehabilitation of the Querbes Lift Station. EJES provided professional engineering services for the design of the odor control system for the rehabilitation project. The facility is located in a residential area adjacent to a golf course so the *odor* control system had to be aesthetically pleasing as well as provide 12 acph to ventilate the wet well and screen room above.



## TEC Professional Services Questionnaire

### KEY PERSON, SPECIALIST, OR INDIVIDUAL CONSULTANT:

**Name & Title:**

Kamal Rasheed, PE

**Project Assignment**

Project Principal | Senior Civil Engineer

**Name of Firm with which associated:**

**EJES, Inc.**

**Years' experience with this Firm:**

4

**Education: Degree(s)/Year/Specialization:**

B.S. / 1997 / Civil Engineering

**Active Registration: Year first registered/discipline**

2014/Civil Engineer – LA #38825 | 2003/Civil Engineer – TX #91125

**Other experience and qualifications relevant to the proposed Project:**

Kamal Rasheed, PE currently serves as VP and Gulf Regional Manager for EJES. He has over 23 years of experience in Civil Engineering and Project Management. His areas of expertise and experience also include management and design for municipal infrastructure projects and private development for projects exceeding \$15 million in value. His projects have included storm water pumping stations, wastewater lift stations, roadways, large municipal watershed design, drainage ditches (upwards of 30 miles), residential subdivisions (upwards of 100 acres), and commercial site developments (upwards of 250 acres). Previously, while at URS he was certified and trained as a URS Project Manager, a certification recognized by the Project Management Institute.

#### RELEVANT EXPERIENCE

**HURRICANE HARVEY DISASTER COST RECOVERY FOR WASTEWATER LIFT STATION | HOUSTON, TX | *Project Manager*** while at Hatch (prime) and EJES (sub) - on going project. The project involves reviews and analysis of all existing documentation on 23 lift stations. The assets pre- and post-Hurricane Harvey conditions were determined, noting any additional or latent damages identified. Conducted on-site asset inventory and assessment of the entire designated facility damaged by Hurricane Harvey. Defined the assets pre- and post-Hurricane Harvey conditions, noting any additional or latent damages identified. Verify the optimal operating condition for the facility at the current permitted flow and loadings and associated discharge limits. Establish the repair/replacement alternatives for assets damaged by Hurricane Harvey and conduct a detailed cost estimate using RS means to determine costs. Determine the cost differences for repairs/replacements to bring assets damaged by Hurricane Harvey to pre-Hurricane Harvey condition, optimal condition, and optimal condition with hardening/mitigation. Assisted City personnel in preparing forms necessary for filing FEMA claims as needed to ensure all technical aspects are sufficiently addressed.

**STORM WATER PUMPING STATIONS, CITY OF HOUSTON, PUBLIC WORKS & ENGINEERING DEPARTMENT | HOUSTON, TX. | *Project Manager and Engineer of Record***. This project included design for rehabilitation of stormwater pumping stations and flood warning systems which included preliminary research, the preparation of Phase II - Final Design and Construction Documents, and Phase III - Construction Phase Services. This project has also involved the writing of a brand new standard for the City for the design of flood warning systems and the writing of a new stormwater pump specification. To aid the City in the future for design and maintenance of these type of projects, technical memos were written on various subjects such as the use of backup generator vs quick connect portable generators, wireless path surveys, and alternatives for using green infrastructure. This included a fiscal year 2013 contract with \$747,711 in engineering fees. In 2015 the new additional contract was awarded for \$300,000 plus an additional \$500,000 added in 2016 for a total of \$800,000 in engineering fees for further work around the City for stormwater pump stations and flood warning systems.

**SADDLEBROOK RANCH LIFT STATION, HARRIS COUNTY MUNICIPAL UTILITY DISTRICT NO. 1 | HARRIS COUNTY, TX | *Project Manager/Engineer*** for the design and construction of a new sanitary pumping station for the new 100-acre Saddlebrook Ranch Subdivision.

**LOUETTA ROAD LIFT STATION, SPRING CREEK FOREST PUBLIC UTILITY DISTRICT | HARRIS COUNTY, TX | *Project Manager/Engineer*** for the design and construction of a new sanitary pumping station for the new subdivisions in the Spring Creek Forest Municipal Utility District.

**CITY OF HOUSTON BELTWAY WASTEWATER TREATMENT PLANT LIFT STATIONS STUDY | HOUSTON, TX | *Project Engineer*** for the study, design, and construction of nine (9) sewer pumping stations in the Beltway Wastewater Treatment Plant (WWTP) sewer basin in Houston. The project consisted of the study of the existing sewer pumping stations and options for the rehabilitation, reconstruction, and elimination of the sewer pumping stations.

## TEC Professional Services Questionnaire

### KEY PERSON, SPECIALIST, OR INDIVIDUAL CONSULTANT:

**Name & Title:**

Aaron B. Hargrove, PE – Senior Civil

**Project Assignment**

Senior Civil Engineer

**Name of Firm with which associated:**

**EJES, Inc.**

**Years' experience with this Firm:**

5

**Education: Degree(s)/Year/Specialization:**

B.S./1996 / Civil Engineering

**Active Registration: Year first registered/discipline**

2004/Civil Engineer – TX #93706

**Other experience and qualifications relevant to the proposed Project:**

Mr. Hargrove has 20 years of experience in all aspects of civil engineering ranging from public and private engineering projects. His experience includes the design and construction of includes site and land developments, municipal facilities. He has a thorough knowledge of the numerous regulatory agencies that govern the planning and design of development projects.

**RELEVANT EXPERIENCE**

**25TH STREET PAVING AND UTILITY IMPROVEMENTS FROM BROADWAY AVENUE TO SEAWALL** | *City of Galveston, TX* | **QA/QC** for the design of the reconstruction of approximately 4,100 linear feet of asphalt roadway in the City of Galveston. The reconstruction includes the milling and resurfacing of the pavement, replacing sidewalk and ADA ramps, the upsizing of existing water and sewer lines, and the preparation of a traffic control plan. This project requires coordination with the various utility companies, USACE, TXDOT and Galveston County.

**WASTEWATER LIFT STATIONS RENEWAL/ REPLACEMENT** | *City of Houston, TX* | **Project Manager** for the design for the renewal and/or replacement of the Bonner Road, Northborough #1, and Northborough #2 lift stations. EJES evaluated each of the existing lift station sites and developed recommendations for improvements to bring the site into compliance with the City of Houston lift station design criteria. EJES provided engineering, design and construction phases services including but limited to process and mechanical related tasks for the preparation of PS&E and related documents for the rehabilitation of the lift stations. EJES also prepared quantity summaries, construction cost estimates, and construction contract time.

**CALDER ROAD SANITARY SEWER IMPROVEMENTS, CITY OF LEAGUE CITY** | *City of Galveston, TX* | **Project Manager** for the design and installation of approximately 2,000 linear feet of 12-inch and 7,500 linear feet of 30-inch sanitary sewer along Calder Road, bypass pumping, and the demolition of two lift stations. Responsibilities for managing include preparation of plans and contract documents, detail cost estimate, and obtaining public agency approvals. Responsibilities also include providing bid phase services and construction phase services, including the opening and tabulation of bids and submittal review.

**HCMUD 504 (THE GROVES) LIFT STATION NO. 2, LH GRAVES, LLC** | *Harris County, TX* | **Project Manager** for the design and installation of a 12-foot diameter circular wet well lift station, submersible pumps, valve vault and site accessories in accordance with the requirements of the City of Houston. Responsibilities for managing include preparation of plans and contract documents, detail cost estimate, and obtaining public agency approvals. Responsibilities also include providing bid phase services and construction phase services, including the opening and tabulation of bids and submittal review.

**STONE CREEK RANCH, SECTIONS 1 – 3, DUNGROVE, LLC** | *Harris County, TX* | **Project Engineer** responsible for the design, cost estimates, specifications and bid documents for water, sewer, drainage and concrete pavement. The 102-acre section contains 270 single-family residential lots; 12,000 linear feet of water line; and 9,500 linear feet of sanitary sewer line.

## TEC Professional Services Questionnaire

### KEY PERSON, SPECIALIST, OR INDIVIDUAL CONSULTANT:

**Name & Title:**

Paul Adey, PE, PMP – Senior Civil

**Project Assignment**

QA/QC | Senior Civil Engineer

**Name of Firm with which associated:**

**EJES, Inc.**

**Years' experience with this Firm:**

7

**Education: Degree(s)/Year/Specialization:**

B.S./1987 / Civil Engineering

M.S./1991 / Civil Engineering

**Active Registration: Year first registered/discipline**

2007/Civil Engineer – TX #100114| 2009/Civil Engineer – OK #24208

**Other experience and qualifications relevant to the proposed Project:**

Mr. Adey has 30 years of experience in civil engineering analysis and designs, project management, construction management and construction administration. Past projects on Civil Engineering include paving, storm drainage design and analysis, water/wastewater utility improvements and relocations, civil site development for schools, apartments, churches, and municipalities. Proficient in the use of analysis and design software such as AutoCAD, MicroStation, Eaglepoint, PowerCivil, GeoPak, Flow master, Hec-Ras, WinStorm, SurveyLink, and Trimble Geomatic Office.

**RELEVANT EXPERIENCE**

**WATER AND WASTEWATER MAINS REPLACEMENT FOR THE DALLAS HORSESHOE PROJECT, (Contract No. 13-135/136F) | Dallas, TX | Team Lead** responsible for coordinating the design team that provided engineering designs for the relocation and adjustments of the TxDOT Horseshoe Design-Build project. This involved approximately 30,000 LF of 8-inch -30-inch diameter sizes of water and wastewater mains. The design effort included site investigation, establishment of horizontal and vertical alignments, evaluation of by-other-than-open-cut construction method options and evaluation of SUE results. Additional responsibilities included coordinating with the design leads of other disciplines including roadway design, drainage design and designers for the other dry utility lines and other agencies involved in the Dallas Horseshoe project, to identify and resolve possible design conflicts. All designs were in conformity with TXDOT and DWU design specifications.

**DWU WATER AND WASTEWATER MAIN REPLACEMENTS (Contract 10-213E/214E) | Dallas, TX | Project Manager/Design Engineer** provided civil engineering design for the replacement of approximately 10,800 LF of 8-inch and 1,300 LF of 10-inch wastewater mains, as well as 400 LF of 6-inch, 22,050 LF of 8-inch, and 15,00 LF of 12-inch water mains spread throughout the City of Dallas at 31 different locations.

**DART Contract No. C-1018750-05 LINDSLEY DRIVE, MATERHORN DR, MORGAN, NANDINA AND GARRISON WATER & WASTEWATER IMPROVEMENTS| Dallas, TX | Project Manager** provided Engineering services from 30% submittal to completion which included 5,800 LF of concrete road pavement replacement, drainage analysis and design of 2,530 LF storm water lines (sizes 24"-48") and 8,500 LF of 8"-16" water and wastewater line improvements.

**WATER AND WASTEWATER REPLACEMENT FOR THE CITY OF DALLAS (DWU Contract No. 04-255/256) | Dallas, TX | Project Manager** for the design for project that included segments from Haines Street (Neches St. To Neely St.), High Bluff Dr. (Cromwell St. To High Dale Dr.), Williamsburg Road (Midway Ave. to Crestline Dr.) and Congress Avenue (Wellborn St. To Hood St.). Tasks performed involved replacement of about 3,000 LF of existing 8-inch water mains, preparing preliminary design reports and final construction plans.

**CITY OF GARLAND UTILITY IMPROVEMENTS, TRAIL CREST AND BRAIR CLIFF | Garland, TX | Project Manager/Design Engineer** responsible for providing construction plan for the utility improvements on about 3,000 LF of 8-inch and 12-inch water and wastewater pipes for the City of Garland along Trail Crest and Brair Cliff streets.



## TEC Professional Services Questionnaire

### KEY PERSON, SPECIALIST, OR INDIVIDUAL CONSULTANT:

**Name & Title:**

Shirley D. Wilson, EI – Civil Designer

**Project Assignment**

Civil Designer

**Name of Firm with which associated:**

**EJES, Inc.**

**Years' experience with this Firm:**

13

**Education: Degree(s)/Year/Specialization:**

B.S./ 2003/ Civil Engineering

Undergraduate/1992/ Civil Engineering

**Active Registration: Year first registered/discipline**

2005/Engineer-in-Training – LA #27786

**Other experience and qualifications relevant to the proposed Project:**

Ms. Wilson has 15 years of experience in multidisciplinary Civil Engineering work. Her experience includes project management, design, drafting, research, construction management and value engineering. She has experience in roadway design, subsurface infrastructure and street rehabilitation projects. She also assisted in the design of wastewater treatment plant projects, water plant improvements, waterline replacement and storage tanks, and the evaluation of storm and sanitary sewer lines for rehabilitation. Ms Wilson experience also includes being responsible for updating the Galveston Island Water Distribution System Model and assisting in preparing a Master Plan report with recommendations for improvements to the city of Galveston.

**WALLACE INTERCEPTOR| PHASE I** *Shreveport, LA* | **Civil Designer** provided engineering services for the evaluation of approx. 7422 lf of 39" gravity main, 2633 lf of 42" gravity main, 27618 lf of 54" gravity sewer main, 59 manholes, and 2 lift stations. Her responsibilities include compiling data, reviewing videos of sewer main, site investigations, creating spreadsheet exhibits to be used in a report, and providing recommendations for repair.

**TO1-125A SEWER MAIN IMPROVEMENTS** | *Shreveport, LA* | **Civil Designer** provided engineering services for the replacement or rehabilitation of approx. 6769 lf of 8" gravity main, 1169 lf of 10" gravity main, 1885 lf of 15" gravity sewer main and 13 manholes. Her responsibilities include preliminary and final design, plan and profile drawings, and site investigation.

**TO1-104-B SEWER MAIN IMPROVEMENTS** | *Shreveport, LA* | **Civil Designer** performed engineering services for the replacement or rehabilitation of approximately 9,162 linear feet of 8" gravity main, 1,100 linear feet of 12" gravity main, and 203 linear feet of 36" gravity sewer main. Additional work includes replacing, rehabilitating, and adding approximately 38 manholes. Her responsibilities include preliminary and final design, plan and profile drawings, and site investigation.

**OCPR FRESHWATER INTRODUCTION SOUTH OF HWY 82 (project me-16)** | *Vermillion Parish, LA* | **Civil Designer** performed engineering services for General engineering design, Construction Inspection, and Construction Oversight services for the repair of revetment scour at five control structures. The damages were caused by Hurricanes Rita and Ike. The structures are located on the 76,000 acre Rockefeller State Wildlife Refuge located in Cameron and Vermillion Parishes. Deliverables consisted of 11" X17" plans, specifications, and progress reports.

**REPLACEMENT OF WILLOWBROOK, WRIGHT, McCOY & PINES VILLAGES SEWAGER PUMPING STATIONS** | *New Orleans, LA* | **Civil Designer** provided extensive professional review of the damages to 11 facilities as a direct result of damages from Hurricane Katrina. Performed design calculations, established design criteria's and provided technical specification for all improvements. Also, responsible for code review and implications and permit requirements.

**HAMILTON ROAD** | *Bossier City, LA* | **Civil Designer** for a local urban system project where services provided included a completed EA in accordance with the National Environmental Policy Act (NEPA), widening the existing two-lane roadway to 4 or 5-lanes with subsurface drainage, widening the existing underpass of KCS railroad, designing and overpass of Union Pacific Railroad and a line and grade analysis. The Hamilton Road corridor is approximately 2-miles of existing roadway and approximately 0.25 miles of proposed new alignment. The project included a public meeting and a public hearing to discuss details of the EA, which resulted in a Finding of No Significant Impact (FONSI) from FHWA. Ms. Wilson has a major role in the roadway design and the subsurface infrastructure.

## TEC Professional Services Questionnaire

**L. Work by Firm or Joint-Venture members which best illustrates current qualifications relevant to this Project. Please include any and all work performed for Jefferson Parish. Please attach additional pages if necessary.**

<b>PROJECT NO. 1</b>		
<b>Project Name, Location and Owner's contact</b>	<b>Description of Services Provided:</b>	
<b>JEFFERSON PARISH HARVEY WASTEWATER TREATMENT</b> <small>PROJECT OWNER</small> Jefferson Parish, LA <small>POINT OF CONTACT NAME</small> Katie Cooper Barowka & Bonura Engineers & Consultants, LLC <small>POINT OF CONTACT TELEPHONE NUMBER</small> (504) 828-0030	EJES developed construction documents necessary for improvements at the Harvey WWTP	
<b>Completion Date (Actual or estimated)</b>	<b>Estimated Cost:</b>	
	<b>Entire Project:</b>	<b>Work for which Firm was Responsible</b>
June 1, 2015	NOT KNOW	\$25,000

<b>PROJECT NO. 2</b>		
<b>Project Name, Location and Owner's contact</b>	<b>Description of Services Provided:</b>	
<b>JEFFERSON PARISH MARRERO WASTEWATER TREATMENT PLANT-REHABILITATE TRICKLING FILTERS</b> <small>PROJECT OWNER</small> Jefferson Parish, LA <small>POINT OF CONTACT NAME</small> Scott Chehardy Hartman Engineering <small>POINT OF CONTACT TELEPHONE NUMBER</small> (504) 466-5667	EJES provide design and construction administration for new electrical and control system for two existing trickling filters. Design includes replacement of the existing motor control center and control panel in the trickling filter #3/#4 control room that serves four existing pumps for trickling filters #3 and #4. The existing MCC also serves secondary clarifier pumps, secondary sludge collector pumps, air blower pumps, scum pumps, outlets for portable sump pumps, return and waste sludge pumps, utility water MCC, weld shop disconnect and area lighting panel. Design also includes new interior/exterior lighting at the trickling filter motor control building.	
<b>Completion Date (Actual or estimated)</b>	<b>Estimated Cost:</b>	
	<b>Entire Project:</b>	<b>Work for which Firm was Responsible</b>
June 1, 2015	NOT KNOWN	\$38,250

## TEC Professional Services Questionnaire

<b>PROJECT NO. 3</b>		
<b>Project Name, Location and Owner's contact</b>	<b>Description of Services Provided:</b>	
<p><b>SOUTH KENNER ROAD REHABILITATION - RIVER ROAD TO CHENEVERT</b></p> <p style="text-align: center;"><small>PROJECT OWNER</small>  <b>Jefferson Parish, LA</b>  <small>POINT OF CONTACT NAME</small>  <b>Mark Drewes, PE</b>  <b>Project Manager</b>  <small>POINT OF CONTACT PHONE NUMBER</small>  <b>(504) 736-6500</b></p>	<p style="text-align: center;"><b>DEVELOPMENT OF PS&amp;E</b></p> <p>EJES provided project management and design services for the rehabilitation of a subsurface drainage and sidewalk Improvement project. The existing roadway is approximately 22' wide, and has steep ditches immediately adjacent to the pavement which creates an unsafe condition. The new section will be 26' wide, 2-11' lanes, with 2' shoulders; subsurface drainage and 4' sidewalks on both sides. Drainage system will include local swales to collect the stormwater runoff into drop inlets, generally spaced at 200'. The foreslope for the swale is 4:1, the backslope should be 3:1, but may go to 2:1 if necessary and out of the clear zone. The project will provide for the milling of 1-1/2" of the existing surface, and new asphalt layer of 3-1/2". Right-of-way width is 60', there is a 6" buffer between the sidewalk and the right-of-way, and a 6" buffer between the sidewalk and the swale.</p>	
<b>Completion Date (Actual or estimated)</b>	<b>Estimated Cost:</b>	
	<b>Entire Project:</b>	<b>Work for which Firm was Responsible</b>
April 20, 2015	\$2.1M	\$397,517

<b>PROJECT NO. 4</b>		
<b>Project Name, Location and Owner's contact</b>	<b>Nature of Firm's Responsibility:</b>	
<p><b>CITY OF SHREVEPORT MSA SEWER IMPROVEMENTS</b></p> <p style="text-align: center;"><small>PROJECT OWNER</small>  <b>Shreveport, LA</b>  <small>POINT OF CONTACT NAME</small>  <b>David Kunz</b>  <b>BALAR Associates</b>  <small>POINT OF CONTACT TELEPHONE NUMBER</small>  <b>(318) 221-8312</b></p>	<p style="text-align: center;"><b>SEWER MAIN IMPROVEMENTS</b></p> <p>EJES is providing services to develop plans for the replacement or rehabilitation of approximately 26,000 linear feet of gravity sewer main that varies in size from 8" to 24" diameter. Additional work includes replacing, rehabilitating, and adding approximately 136 manholes. The location of the proposed work for the area is between Linwood Ave. and Brush Bayou from W 84th St. to David Dr., between Brush Bayou and Kingston Rd. from Woodmont Pl to Kings Towne Pl, and between Kingston Rd. and Mansfield Rd. from Kingston Rd. to Lazywood Lane.</p>	
<b>Completion Date (Actual or estimated)</b>	<b>Estimated Cost:</b>	
	<b>Entire Project:</b>	<b>Work for which Firm was Responsible</b>
October 2017	\$3.3 M	\$50,000

## TEC Professional Services Questionnaire

PROJECT NO. 5		
Project Name, Location and Owner's contact information:	Description of Services Provided:	
<b>EAST BANK WASTEWATER TREATMENT PLANT</b> <small>PROJECT OWNER</small> <b>Sewage and Water Board of New Orleans</b> <small>POINT OF CONTACT NAME</small> <b>Saradhi Balla</b> <b>IMS Engineers</b> <small>POINT OF CONTACT TELEPHONE NUMBER</small> <b>(601) 968-9190</b>	EJES provided services to develop complete PS&E documents for replacement of existing 54" and 66" steel influent and effluent pipes for penetration of a new flood protection system at a wastewater treatment plant	
<b>Completion Date (Actual or estimated)</b>	<b>Estimated Cost:</b>	
2013	<b>Entire Project:</b> \$NOT KNOWN	<b>Work for which Firm was Responsible</b> \$104,675

PROJECT NO. 6		
Project Name, Location and Owner's contact	Description of Services Provided:	
<b>CITY OF BATON ROUGE DEPARTMENT OF PUBLIC WORKS</b> <small>PROJECT OWNER</small> <b>City of East Baton Rouge, LA</b> <small>POINT OF CONTACT NAME</small> <b>Jeff Duplantis</b> <b>CH2M Hill   Program Manager</b> <small>POINT OF CONTACT TELEPHONE NUMBER</small> <b>(225) 381-8454</b>	<b>SANITARY SEWER OVERFLOW CONTROL &amp; WASTEWATER</b> EJES, Inc. was responsible for completing plans, specifications and estimates for replace of 646lf of 10" & 18" existing sanitary sewer with 12" & 24" PVC Sanitary Sewer.	
<b>Completion Date (Actual or estimated)</b>	<b>Estimated Cost:</b>	
2010	<b>Entire Project:</b> \$NOT KNOWN	<b>Work for which Firm was Responsible</b> \$104,000

## TEC Professional Services Questionnaire

PROJECT NO. 7		
Project Name, Location and Owner's contact information:	Description of Services Provided:	
<p><b>HURRICANE RELATED REPAIRS OF SPS II LIFT STATIONS</b>  <small>PROJECT OWNER</small>  Sewerage &amp; Water Board of New Orleans  <small>POINT OF CONTACT NAME</small>  Justin Bertheaud, PE  Burk-Kleinpeter, Inc.  <small>POINT OF CONTACT TELEPHONE NUMBER</small>  (504) 486-5901</p>	<p><b>REPLACEMENT OF 11 SEWAGE PUMPING STATIONS</b>  EJES provided extensive professional review of the damages to the facilities as a direct result of wind, rain, and flood damages from Hurricane Katrina. EJES conducted site visits for all 11 facilities to assess the damages.</p> <p>To supplement the damage assessments, EJES contacted the manufacturers of major equipment items for advice and recommendation about repairs or replacement. EJES performed design calculations, established design criterias and provided technical specifications for all improvements. EJES was also responsible for code review and implications and permit requirements.</p>	
<b>Completion Date (Actual or estimated)</b>  2009	<b>Estimated Cost:</b>	
	<b>Entire Project:</b>	<b>Work for which Firm was Responsible</b>
2009	\$NOT KNOWN	\$78,551

PROJECT NO. 8		
Project Name, Location and Owner's contact information:	Description of Services Provided:	
<p><b>SANITARY SEWER SYSTEM UPGRADES NORTH SERVICE AREA</b>  <small>PROJECT OWNER</small>  City of Baton Rouge, LA  <small>POINT OF CONTACT NAME</small>  Jared Monceaux, PE  Hartman Engineering  <small>POINT OF CONTACT TELEPHONE NUMBER</small>  (225) 387-6222</p>	<p><b>Lovett Road Area (PS187)</b>  EJES replaced 1,127 linear feet of existing 4-inch sewer force main with a new 6-inch sewer force main in 2008 for the City of Baton Rouge, Louisiana. Services included new air release/vacuum valves, fittings and appurtenances.</p> <p><b>Wax Road Area (PS230)</b>  EJES replaced 1,743 linear feet of existing 4-inch sewer force main with a new 8-inch sewer force main. Services included new air release/vacuum valves, fittings and appurtenances</p> <p><b>Sullivan Road Area (PS282)</b>  EJES replace 2,000 linear feet of existing 4-inch sewer force main with a new 8-inch sewer force main. Services included new air release/vacuum valves, fittings and appurtenances</p>	
<b>Completion Date (Actual or estimated)</b>  2009	<b>Estimated Cost:</b>	
	<b>Entire Project:</b>	<b>Work for which Firm was Responsible</b>
2009	\$NOT KNOWN	\$100,000



## TEC Professional Services Questionnaire

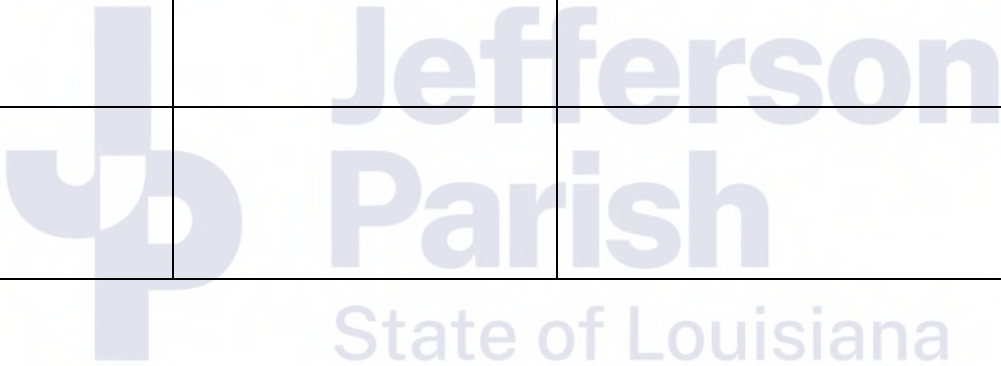
PROJECT NO. 9		
<b>Project Name, Location and Owner's contact information:</b>  <b>STONER AVENUE LIFT STATION</b> <small>PROJECT OWNER</small> City of Shreveport <small>POINT OF CONTACT NAME</small> Jim Hagen, PE BALAR Associates, Inc. <small>POINT OF CONTACT TELEPHONE NUMBER</small> (318) 673-6592	<b>Description of Services Provided:</b>  EJES, Inc is responsible for Lift Station Design, Site Layout, Pump & Motor Design, Building System Design	
<b>Completion Date (Actual or estimated)</b>  2006	<b>Estimated Cost:</b>	
	<b>Entire Project:</b>  \$4.5 Million	<b>Work for which Firm was Responsible</b>  \$68,000

PROJECT NO. 10		
<b>Project Name, Location and Owner's contact information:</b>  <b>CEDAR GROVE FORCE MAIN</b> <small>PROJECT OWNER</small> City of Shreveport <small>POINT OF CONTACT NAME</small> Ali Mustapha <small>POINT OF CONTACT TELEPHONE NUMBER</small> (318) 673-6035	<b>Description of Services Provided:</b>  <b>REHABILITATION OF 5,865 LF OF 360 INCH CONCRETE CYLINDER FORCE MAIN</b> The 5,230 lf of the 36-inch force main was to be slip lined with 32-inch HDPE . Project also included a 120 lf bore under an urban roadway and 6 combination air valves ranging in size from 2-inch to 6-inch. Required the design of 2 spill containment systems	
<b>Completion Date (Actual or estimated)</b>  2004	<b>Estimated Cost:</b>	
	<b>Entire Project:</b>  \$NOT KNOWN	<b>Work for which Firm was Responsible</b>  \$67,000

## **TEC Professional Services Questionnaire**

**M. List all prior and/or on-going litigation between Firm and Jefferson Parish. Please attach additional pages if necessary.**

<b>Parties:</b>		<b>Status/Result of Case:</b>
<b>Plaintiff:</b>	<b>Defendant:</b>	
1. NONE		
2.		
3.		
4.		



## TEC Professional Services Questionnaire

**N. Use this space to provide any additional information or description of resources supporting Firm's qualifications for the proposed project.**

### SPECIALIZED EXPERIENCE AND TECHNICAL COMPETENCE



**EJES, Inc. (Founded in 1997)** is a professional **ARCHITECT & CIVIL ENGINEERING DESIGN AND CONSULTING** firm that provides architect and engineering expertise and experience to both public and private sector clients in the states of Louisiana, Texas, and Oklahoma. EJES, Inc. is a small minority-owned firm certified by the Small Business Administration (SBA), Louisiana Department of Transportation and Development (LaDOTD) and New Orleans International Airport.

*Principal and President, Edwin Jones, PE is a Southern University-Baton Rouge Graduate from the College of Engineering in 1990.*

With a **“Committed to Providing Service with Excellence”** philosophy, EJES has built an unparalleled reputation for delivering superior architectural and engineering services and is referred to as one of the most respected design firms in Louisiana and Dallas.

EJES has a diverse portfolio, in-house multi-discipline professionals, and an integrated project delivery process that ensures that each project can be efficiently bid and constructed. With a “total quality control system”. EJES’ in-house services allow the firm to manage each project from *the early planning stages to completion*, and in accordance with the customer’s requirements. The firm employs staff with experience and expertise that is highly diverse and covers a broad spectrum of architecture and engineering design disciplines to enhance customer service and address the specialized needs of each client.

Our Corporate Office is in Dallas, Texas and **we have two Louisiana offices located in New Orleans and Shreveport**. Combined we currently staff more than 80 professionals, providing architecture and civil engineering and construction management services in various states.

**EJES, Incorporated** provides engineering design services tailored to meet the specific requirements of each individual project. Our staff experience is highly diverse, covering a broad spectrum of engineering design disciplines. Years of field experience of EJES’ design are incorporated into every design, resulting in projects which can be efficiently bid and constructed.

**EJES, Incorporated** has proven experience performing these services for Parishes and other municipalities. **EJES has maintained offices in Louisiana since 1997**. We offer Jefferson Parish a group of professionals that will deliver a successful, cost efficient project that will meet budget and schedule requirements set forth by our clients.

Knowing how to create and sustain project momentum by working effectively as an extension of the client is a unique value that EJES will contribute to the management of the project. We know that on-time delivery of a quality product will be a vital element in satisfying expectations of the Clients and all interested parties.

Clearly, the first step in meeting schedule deadlines is the firm’s ability to develop, implement and utilize effective schedules. EJES project management and support team pay attention to this by applying its experience to the detailed steps outlined in the scheduling and the resultant impact on task execution. This experience is particularly useful in managing multiple activities involving different parties such as the Clients, local utility owners, state and federal agencies. EJES uses Microsoft Project software to assist with schedule maintenance and budget monitoring.

EJES project schedules include consideration of processing activities such as:

- Document development, review, editing and printing with input from multiple team members
- Allocation of internal team QA/QC review time prior to Client submittal due date
- Allocation of sufficient time for Client to review submittals and project related information
- Allocation of sufficient time for outside sources to review project related material
- Periods for reviewing, discussing and addressing comments/concerns regarding intricate issues
- Periods for coordinating, researching and interacting with other authorities with interests in the project

## **TEC Professional Services Questionnaire**

### 1) PROFESSIONAL TRAINING AND EXPERIENCE IN RELATION TO THE TYPE OF WORK REQUIRED FOR THE ROUTINE ENGINEERING SERVICES

Professional Qualifications for EJES INCORPORATED				
Role	Name	Education	Registration	Total Yrs
Principal-in-Charge	Edwin B. Jones	BS/Civil Engineering MBA/Operations Management	PE	28
Project Manager	Tanita Gilbert-Baker	BS/Civil Engineering Executive MBA	PE	25
Public Involvement	Reginald Crear	BS/Marketing		13
Quality Assurance/ Quality Control	Paul Adey	BS/Civil Engineering	PE	28
Civil Engineer	Gregory Korb	BS/Civil Engineering	PE	22
	Kamal Rasheed	BS/Civil Engineering	PE	25
	Aaron Hargrove	BS/Civil Engineering	PE	23
	Shirley Wilson	BS/Civil Engineering	EI	13
	Nicholas LaValla	BS/Civil Engineering	PE	1
	Merineh Getachew	BS/Civil Engineering		7
	Iman Abbasnia	BS/Civil Engineering		47
Civil Designer	Theandrea Thomas	BS/Civil Technology, Construction Management		33
CADD Support	Thomas Sifuentes	CADD Certification		18
	Adam Sumet	CADD Certification		5
Office Administration	Kinni Farve	BS, Marketing		5


### 2) SIZE OF FIRM: CONSIDERING NUMBER OF PROFESSIONAL AND SUPPORT PERSONNEL REQUIRED TO PERFORM TYPE OF ROUTINE ENGINEERING TASK

The **EJES TEAM** is comprised of a highly diverse group of professionals with experience covering a broad spectrum of engineering design, disciplines to perform services required for these projects. **EJES** currently has a staff of more than 70 professionals, providing civil engineering, architecture and construction management services to our clients. Our staff includes 17 licensed engineers, 9 engineering interns, 8 CADD technicians, 2 licensed Architects, 4 Intern Architects, and 15 administration assistants that will provide design and QA/QC services

## TEC Professional Services Questionnaire

### STAFFING MATRIX

The matrix below illustrates the staffing that EJES INC has available for this project. **We are prepared to commit the required resources to the project immediately, and assure their continuing availability.**

		Project Manager	Quality Control	Project Evaluation	Civil Design	Drafting of Technical Plans	Technical Specifications	Construction Administration	Traffic Control	Public Involvement	Cost Estimating
	<b>EJES INCORPORATED</b>										
	Edwin B. Jones, PE, MBA <b>Principal-in-Charge</b>	◆	◆	◆	◆		◆			◆	◆
	Tanita Gilbert-Baker	◆	◆	◆	◆		◆			◆	◆
	Kamal Rasheed	◆	◆	◆	◆	◆	◆				
	Paul Adey, PE	◆	◆	◆	◆						
	Aaron Hargrove, PE	◆		◆	◆		◆				
	Gregory Korb, PE	◆		◆	◆		◆				
	Nicholas LaValla				◆			◆		◆	
	Shirley Wilson, EI				◆	◆			◆		
	Theandrea Thomas					◆					
	Adam Sumet					◆		◆			
	Reginald Crear									◆	
	Iman Abbasnia					◆					

### 3) CAPACITY FOR TIMELY COMPLETION OF NEWLY ASSIGNED WORK; CURRENT UNFINISHED WORKLOAD & AVAILABILITY

The **EJES** will commit the resources necessary for design of any segment of work assigned to for Jefferson Parish Sewer Projects. Our current workload will allow us to accommodate any project assigned. All staff members proposed for the project are available to begin work immediately upon award of project and notice to proceed.

Name	Duties/Responsibilities	Current /Unfinished Workload	Availability
Edwin B. Jones, PE, MBA	Principal-in-Charge	60%	40%
Tanita Gilbert-Baker, PE, MBA	Project Manager/Senior Civil Engineer	50%	50%
Kamal Rasheed, PE	Senior Civil Engineer	60%	40%
Paul Adey, PE, PMP	Quality Assurance/Quality Control	50%	50%
Gregory Korb, PE	Senior Civil Engineer	50%	50%
Nicholas LaValla	Senior Civil Engineer	50%	50%
Shirley Wilson, EI	Civil Engineering Design Support	40%	60%
Reginald Crear	Pubic Involvement	60%	40%
Iman Abbasnia	CADD	60%	40%
Merineh Getachew	CADD	55%	45%
Theandre Thomas	Design Support	40%	60%
Adam Sumet	Construction Administration	40%	60%



## **TEC Professional Services Questionnaire**

### **CAPACITY TO PERFORM THE WORK WITHIN TIME LIMITATIONS AND WITHIN BUDGET**

EJES has a hard-earned reputation within the State of Louisiana and with other clients for effective production of objective, high-quality projects and capability to adhere to strict project schedules. In most cases, the Project Team will be able to initiate work on the same day that verbal notification to proceed is received. Our team's demonstrated flexibility and responsiveness has led to repeat business on numerous occasions, particularly with regard to the State of Louisiana.

The Project Team can conduct several projects with accelerated schedules simultaneously, indicating our ability to respond to short time frames and quick turn-around project needs. Each task order review and final submittal will be within the schedules established by Jefferson Parish. Repeat business by key team members demonstrates our team commitment and capability to meet schedules and deadlines established by our Louisiana Clients.

***EJES acknowledges that routine engineering services are for contracts where the total engineering fee, exclusive of resident inspection services, will not exceed \$500,000.00 per assignment.***

### **4) PAST PERFORMANCE ON PARISH CONTRACTS**

EJES was awarded a contract as Prime Consultant for design and construction of **Manhattan Blvd SB Right Turn, NB Manhattan Blvd Roadway Widening, Ames Blvd Rehabilitation, and South Kenner Road Rehabilitation (River Road to Chenevert Street)**. We provided services as subconsultant for Westwood Blvd, Harvey Wastewater Treatment Plant, and Marrero Wastewater Treatment Plant projects for Jefferson Parish. EJES has performed work for local entities that include the City of New Orleans, Orleans Parish, New Orleans International Airport, Sewerage and Water Board of New Orleans, and East Baton Rouge Parish. EJES has provided services as Subconsultant for **Jefferson Parish Harvey Wastewater Treatment Plant and Jefferson Parish Marrero Wastewater Treatment Plant-Rehabilitate Trickling Filters**.

### **5) LOCATION OF FIRM**

EJES has a local presence at 2626 Canal Street, New Orleans, LA 70119.

### **6) ADVERSARIAL LEGAL PROCEEDINGS**

EJES has no adversarial between the Parish. We are not aware of any conflict of interest or litigations between the Parish and our Firm.

### **7) PRIOR SUCCESSFUL COMPLETION OF PROJECTS OF TYPE AND NATURE OF ROUTINE ENGINEERING SERVICES**

**EJES has a proven track record as prime and sub-consultant with the State of Louisiana for successfully designing projects of this nature.** EJES understands the importance of providing the most efficient and economical design. Our design practice will be in compliance with Jefferson Parish design criteria and standards. EJES understands the requirements of dealing with key issues such as drainage, landscaping, coordinating with various utility agencies and right-of-way issues associated with neighborhood street projects. EJES understands that coordination of some neighborhood streets may also include the Louisiana Department of Transportation and other agencies. We also understand the importance of providing safety to the traveling public. EJES will develop a traffic control plan for each assigned project to minimize the impact for local travelers and adjacent properties.

**N. To the best of my knowledge, the foregoing is an accurate statement of facts.**

Signature: Edwin B. Jones SR Print Name: Edwin B. Jones, Sr., PE, MBA  
Title: Chief Executive Officer Date: March 25, 2022

## TEC Professional Services Questionnaire



The Louisiana Professional Engineering and Land Surveying Board has the following information on file:

<b>Name:</b>	<b>Public Address:</b>
EJES, Incorporated	Mr. Edwin B. Jones 201 Wilkinson Street
	Shreveport, Louisiana 71104

License/Certificate Information w/ Supervision

License	Status	First Issuance Date	Expiration Date	Supervisor(s)
EF.0002603	Active	10/17/2000	03/31/2023	Mrs. Tanita Melann Gilbert-Baker # PE.0029350 - Active

Print Close

LOUISIANA PROFESSIONAL  
ENGINEERING & LAND SURVEYING BOARD  
(LAPELS)  
9643 Brookline Avenue, Suite 121  
Baton Rouge, LA 70809  
Phone (225) 925-6291  
www.lapels.com

Mr. Edwin Bernard Jones

License/Certificate Type - Number	Expiration Date
PE.0027489	03/31/2022
Status: <span style="color: red;">Active</span>	

LOUISIANA PROFESSIONAL  
ENGINEERING & LAND SURVEYING BOARD  
(LAPELS)  
9643 Brookline Avenue, Suite 121  
Baton Rouge, LA 70809  
Phone (225) 925-6291  
www.lapels.com

Mrs. Tanita Melann Gilbert-Baker

License/Certificate Type - Number	Expiration Date
PE.0029350	03/31/2023
Status: <span style="color: red;">Active</span>	

LOUISIANA PROFESSIONAL  
ENGINEERING & LAND SURVEYING BOARD  
(LAPELS)  
9643 Brookline Avenue, Suite 121  
Baton Rouge, LA 70809  
Phone (225) 925-6291  
www.lapels.com

Mr. Kamal Rasheed

License/Certificate Type - Number	Expiration Date
PE.0038825	09/30/2022
Status: <span style="color: red;">Active</span>	

LOUISIANA PROFESSIONAL  
ENGINEERING & LAND SURVEYING BOARD  
(LAPELS)  
9643 Brookline Avenue, Suite 121  
Baton Rouge, LA 70809  
Phone (225) 925-6291  
www.lapels.com

Ms. Shirley DeRose Wilson

License/Certificate Type - Number	Expiration Date
EI.0027786	03/31/2022
Status: <span style="color: red;">Active</span>	

LOUISIANA PROFESSIONAL  
ENGINEERING & LAND SURVEYING BOARD  
(LAPELS)  
9643 Brookline Avenue, Suite 121  
Baton Rouge, LA 70809  
Phone (225) 925-6291  
www.lapels.com

Mr. Nicholas Anthony LaValla

License/Certificate Type - Number	Expiration Date
EI.0034919	03/31/2022
Status: <span style="color: red;">Active</span>	

MISSISSIPPI

Board of Licensure for Professional Engineers and Surveyors

[Find Licensee](#)  
[Contact Us](#)

Licensee Details

Name: Mr. Gregory Michael Korb

Address: 931 Bay Tree Drive  
Flowood MS 39232

County: Rankin

Phone: 662-588-5706

Employer: EJES Inc.


License Type: Professional Engineer

License Number: 14911

Expires on: 12/31/2022

[<< Back to Search](#)  
[Print](#)

## TEC Professional Services Questionnaire


Texas Board of Professional  
Engineers and Land Surveyors

Page:  

1

Updated on:  

3-21-2022

Matches:  

1

**ADEYEOLUWA, PAUL OLUWOLE**      **PE# 100114**

Status	Branch(s)	Granted	Expires	Employer(s)	Address/Phone
Active	Civil	12-20-2007	09-30-2022	EJES INCORPORATED Walpark Associates Inc	2420 Saddlehorn Drive Mesquite TX 75181-2811 PH#: 214-343-1210

**YIM, BONEY**      **PE# 92075**

Status	Branch(s)	Granted	Expires	Employer(s)	Address/Phone
Active	Civil	06-13-2003	03-31-2023	EJES Inc	PO Box 740222 Dallas TX 75374-0222 PH#: 214-343-1210

**HARGROVE, AARON BRYANT**      **PE# 93706**

Status	Branch(s)	Granted	Expires	Employer(s)	Address/Phone
Active	Civil	06-02-2004	03-31-2022	EJES Inc	10803 White Oak Creek Ct. Cypress TX 77429 PH#: 281-272-1612

**MALONE, MONICA RAQUEL**      **PE# 91890**

Status	Branch(s)	Granted	Expires	Employer(s)	Address/Phone
Active	Civil	06-13-2003	03-31-2023	EJES, Inc.	12801 N Central Expy, Suite 700 Dallas TX 75243 PH#: 214-343-1210