



**5000132245 A ONE TIME PURCHASE OF 25HP AND 75HP MOTORS FOR  
THE DEPARTMENT OF SEWERAGE**  
Jefferson Parish Government

Project documents obtained from [www.CentralBidding.com](http://www.CentralBidding.com)  
24-Sep-2020 09:16:25 AM



# JEFFERSON PARISH

## DEPARTMENT OF PURCHASING

CYNTHIA LEE SHENG  
PARISH PRESIDENT

RENNY SIMNO  
DIRECTOR

September 2020

### **Changes to Jefferson Parish Bidding Information**

The Jefferson Parish Purchasing Department would like to make vendors aware of the following changes:

**Total Bid Price Must Include the Cost of Naming Jefferson Parish as Additional Insured:**

Bidder acknowledges that Bidder recovered the cost of any required insurance in the contract price as required by La.R.S. 9:2780.1 and that Bidder recovered any such cost for the purposes of insuring an obligation to indemnify Jefferson Parish, defend Jefferson Parish, or hold Jefferson Parish harmless and that Bidder's indemnity liability is limited to the amount of the proceeds that are payable under the insurance policy or policies that Bidder has obtained.

**Electronic Procurement:** Beginning November 1, 2020, Jefferson Parish will no longer accept manual bid submissions; and will only accept bid submissions electronically via our e-Procurement system, Central Bidding. Central Bidding can be accessed by visiting either [www.centralbidding.com](http://www.centralbidding.com) or [www.jeffparishbids.net](http://www.jeffparishbids.net). All bidders will be required to register with Central Bidding. Jefferson Parish vendors are able to register for free by accessing the following link: <https://www.centrauctionhouse.com/registration.php>.

**Probable Construction Cost:** Per Jefferson Parish Administrative Policy, the probable construction cost is not revealed in the Jefferson Parish Bidding Documents. Jefferson Parish Administrative Policy has changed and a range of the probable construction cost will be stated in the Jefferson Parish bidding document, entitled Important Notice to All Bidders – Bid Requirements. Per Louisiana Public Bid Law, the probable construction cost will be read at the bid opening.

**Insurance Requirement:** All bidders must provide proof of valid insurance in the required amounts as stated in the Standard Insurance Requirements for bidding purposes. Failure to provide the proof of valid insurance in all of the required coverage amounts will result in bid rejection.

GENERAL GOVERNMENT BLDG. – 200 DERBIGNY ST., SUITE 4400, GRETN. LA 70053  
OFFICE 504.364.2678

JOSEPH S. YENNI BLDG. – 1221 ELMWOOD PARK BLVD., SUITE 404, JEFFERSON, LA 70123  
OFFICE 504.364.2678  
EMAIL: PURCHASING@JEFFPARISH.NET WEBSITE: WWW.JEFFPARISH.NET



**Bid Number 50 – 00132245**

**A ONE TIME PURCHASE OF 25HP AND 75HP MOTORS FOR THE  
DEPARTMENT OF SEWERAGE**

**September 24, 2020 at 11:00 am**

**ATTENTION VENDORS!!!**

**Please review all pages and respond accordingly, complying with all provisions in the technical specifications and Jefferson Parish Instructions for Bidders and General Terms and Conditions. All bids must be received in the Purchasing Department by the bid due date and time.**

**Jefferson Parish Purchasing Department  
200 Derbigny Street  
General Government Building, Suite 4400  
Gretna, LA 70053**

**Buyer Name: Doris Abraham, Buyer I  
Buyer Email: [dabraham@jeffparish.net](mailto:dabraham@jeffparish.net)  
Buyer Phone: 504-364-2690**



**INVITATION TO BID  
THIS IS NOT AN ORDER**

Page: 1

**DATE: 9/18/2020**

**BID NO.: 50-00132245**

**JEFFERSON PARISH  
PURCHASING DEPARTMENT  
P.O. BOX 9  
GRETN, LA. 70054-0009  
504-364-2678**

**VENDOR: 27118 BLANK BID COPY VENDOR**

**BUYER: DABRAHAM@jeffparish.net**

**Bids will be received until 11:00 AM, 9/24/2020 via online at [www.jeffparishbids.net](http://www.jeffparishbids.net) or by hand delivery, USPS mail or other courier service to Purchasing Department, 200 Derbigny Street (General Government Building), Suite 4400, Gretna, LA 70053. For convenience, bidders may also submit bids in the East Bank Purchasing Department, Suite 404, Jefferson Parish Joseph S. Yenni Building, 1221 Elmwood Park Blvd., Jefferson LA 70123. However, if submitting bids on the day of bid opening, bidders must submit at the West Bank location only.**

All bids submitted are subject to these instructions and general conditions and any special conditions and specifications contained herein, all of which are made part of this bid proposal reference. By submitting a bid, vendor agrees to comply with all provisions of Louisiana Law, as well be in compliance with the Jefferson Parish Code of Ordinances, Louisiana Code of Ethics, applicable Jefferson Parish ethical standards and Jefferson Parish Resolution No. 113646 and/or Resolution No. 113647. A copy of these resolutions may be obtained from the Office of the Parish Clerk, Suite 6700, Jefferson Parish General Government Building, 200 Derbigny Street, Gretna, LA 70053. You may also obtain a copy by visiting the Purchasing Department webpage at [purchasing.jeffparish.net](http://purchasing.jeffparish.net) and clicking on On-line forms.

All vendors submitting bids should register as a Jefferson Parish vendor if not already yet registered. Registration forms may be downloaded from <http://purchasing.jeffparish.net> and by clicking on Vendor Information. Current W-9 forms with respective Tax Identification numbers and vendor applications may be submitted at any time; however, if your company is not registered and/or a current W-9 form is not on file, vendor registration is mandatory. Vendors may experience a delay in payment if your company is not a registered vendor with Jefferson Parish.

As per LSA-RS 47:301 et seq., all governmental bodies are excluded from payment of sales taxes to any Louisiana taxing body. Quotations shall be based on F.O.B. Delivered, anywhere within the Parish as designated by the Purchasing Department. **JEFFERSON PARISH WILL ACCEPT ONE BID ONLY FROM EACH VENDOR.** Items bid must meet specifications. **JEFFERSON PARISH** will accept one price for each item unless otherwise indicated. Two or more prices for one item will result in bid rejection. Bidders are required to complete, sign and return the bid form and/or complete and return the associated line item pricing forms as indicated. The price quoted for work shall be stated in figures. In the event there is a difference in unit prices and totals, the unit prices shall prevail.

**JEFFERSON PARISH** reserves the right to award contracts or place orders on a lump sum or individual item basis, or such combination, as shall in its judgment be in the best interest of **JEFFERSON PARISH**. Every contract or order shall be awarded to the **LOWEST RESPONSIVE** and **RESPONSIBLE BIDDER**, taking into consideration the **CONFORMITY WITH THE SPECIFICATIONS** and the **DELIVERY AND/OR COMPLETION DATE**

**PROTESTS:** Only those vendors that submit bids in response to this solicitation may protest any element of the procurement, in writing to the Director of the Purchasing Department. Written protest must be received within 48 hours of the release of the bid tabulation by the Purchasing Department. After consultation, the Parish Attorney's Office will then respond to protests in writing. (For more information, please see Chapter 2, Article VII, Division 2, Sec. 2-914.1 of the Jefferson Parish Code of Ordinances.)

**JEFFERSON PARISH** reserves the right to cancel all or any part of an order if not shipped promptly. No charges will be allowed for parking or cartage unless specified in the quotation. The order must not be filled at a higher price than quoted. **JEFFERSON PARISH** reserves the right to cancel at any time and for any reason by issuing a **THIRTY (30)** day written notice to the contractor.

**JEFFERSON PARISH** requires all products to be new (current) and all work must be performed according to standard practices for the project. Unless otherwise specified, no aftermarket parts will be accepted. Unless otherwise specified, all workmanship and materials must have at least one (1) year warranty, in writing, from the date of delivery and/or acceptance of the project. Any deviations or alteration from the specifications must be indicated on the bid form for each item and upon request, product data for same must be submitted by the time specified by the Purchasing Department.

If this bid requires a pre-bid conference (see Additional Requirements section), bidders are advised that such conference will be held to allow bidders the opportunity to identify any discrepancies in the bid specifications and seek further clarification regarding instructions. The Purchasing Department will issue a written response to bidders' questions in the form of an Addendum.

All formal Addenda require written acknowledgment on the bid form by the bidder. Failure to acknowledge an Addendum on the bid form shall cause the bid to be rejected; **JEFFERSON PARISH** reserves the right to award bid to next lowest responsive and responsible bidder in this event.

**USE OF BRAND NAMES AND STOCK NUMBERS:** Where brand names and stock numbers are specified, it is for the purpose of establishing certain minimum standards of quality. Bids may be submitted for products of equal quality, provided brand names and stock numbers are specified. Complete product data may be required prior to award.

Quantities listed are for bidding purposes only. Actual requirements may be more or less than quantities listed.

Bidders are not to exclude from participation in, deny the benefits of, or subject to discrimination under any program or activity, any person in the United States on the grounds of race, color, national origin, or sex; nor discriminate on the basis of age under the Age Discrimination Act of 1975, or with respect to an otherwise qualified handicapped individual as provided in Section 504 of the Rehabilitation Act of 1973, or on the basis of religion, except that any exemption from such prohibition against discrimination on the basis of religion as provided in the Civil Rights Act of 1964, or Title VI and VII of the Act of April 11, 1968, shall also apply. This assurance includes compliance with the administrative requirements of the Revenue Sharing final handicapped discrimination provisions contained in Section 51.55 (c), (d), (e), and (k)(5) of the Regulations. New construction or renovation projects must comply with Section 504 of the 1973 Rehabilitation Act, as amended, in accordance with the American National Standard Institute's specifications (ANSI A117.1-1991).

Jefferson Parish and its partners as the recipients of federal funds are fully committed to awarding a contract(s) to firm(s) that will provide high quality services and that are dedicated to diversity and to containing costs. Thus, Jefferson Parish strongly encourages the involvement of minority and/or woman-owned business enterprises (DBE's, including MBE's, WBE's and SBE's) to stimulate participation in procurement and assistance programs.



## INSTRUCTIONS FOR BIDDERS AND GENERAL CONDITIONS

### IN ACCORDANCE WITH STATE REGULATIONS JEFFERSON PARISH OFFERS ELECTRONIC PROCUREMENT TO ALL VENDORS

This electronic procurement system allows vendors the convenience of reviewing and submitting bids online. This is a secure site and authorized personnel have limited read access only. Bidders are encouraged to submit electronically using this free service; while the website accepts various file types, one single PDF file containing all appropriate and required bid documents is preferred. Bidders submitting uploaded images of bid responses are solely responsible for clarity. If uploaded images/documents are not legible, then bidder's submission will be rejected. Please note all requirements contained in this bid package for electronic bid submission.

Please visit our E-Procurement Page at [www.jeffparishbids.net](http://www.jeffparishbids.net) to register and view Jefferson Parish solicitations. For more information, please visit the Purchasing Department page at <http://purchasing.jeffparish.net>.

## ADDITIONAL REQUIREMENTS FOR THIS BID

PLEASE MATCH THE NUMBERS PRINTED IN THIS BOX WITH THE CORRESPONDING INSTRUCTIONS BELOW.

13

1. All bidders must attend the MANDATORY pre-bid conference and will be required to sign in and out as evidence of attendance. In accordance with LSA R.S. 38:2212(I), all prospective bidders shall be present at the beginning of the MANDATORY pre-bid conference and shall remain in attendance for the duration of the conference. Any prospective bidder who fails to attend the conference or remain for the duration shall be prohibited from submitting a bid for the project.
2. Attendance to this pre-bid conference is optional. However, failure to attend the pre-bid conference shall not relieve the bidder of responsibility for information discussed at the conference. Furthermore, failure to attend the pre-bid conference and inspection does not relieve the successful bidder from the necessity of furnishing materials or performing any work that may be required to complete the work in accordance with the specification with no additional cost to the owner.
3. Contractor must hold current applicable JEFFERSON PARISH licenses with the Department of Inspection and Code Enforcement. Contractor shall obtain any and all permits required by the JEFFERSON PARISH Department of Inspection and Code Enforcement. The contractor shall be responsible for the payment of these permits. All permits must be obtained prior to the start of the project. Contractor must also hold any and all applicable Federal and State licenses. Contractor shall be responsible for the payment of these permits and shall obtain them prior to the start of the project.
4. A LA State Contractor's License will be required in accordance with LSA R.S. 37-2150 et. seq. and such license number will be shown on the outside of the bid envelope. Failure to comply will cause the bid to be rejected. Additionally if submitting the bid electronically, then the license number must be entered in the appropriate field in the Electronic Procurement system. Failure to comply will cause the bid to be rejected.
5. It is the bidder's responsibility to visit the job site and evaluate the job before submitting a bid.
6. Job site must be clean and free of all litter and debris daily and upon completion of the contract. Passageways must be kept clean and free of material, equipment, and debris at all times. Flammable material must be removed from the job site daily because storage will not be permitted on the premises. Precautions must be exercised at all times to safeguard the welfare of JEFFERSON PARISH and the general public.



**INSTRUCTIONS FOR BIDDERS AND GENERAL CONDITIONS**

7. **PUBLIC WORKS BIDS:** All awards for public works in excess of \$5,000.00 will be reduced to a formal contract which shall be recorded at the contractor's expense with the Clerk of Court and Ex-Officio Recorder of Mortgages for the Parish of Jefferson. A price list of recordation costs may be obtained from the Clerk of Court and Ex-Officio Recorder of Mortgages for the Parish of Jefferson. All awards in excess of \$25,000.00 will require both a performance and a payment bond. Unless otherwise stated in the bid specifications, the performance bond requirements shall be 100% of the contract price. Unless otherwise stated in the bid specifications, the payment bond requirements shall be 100% of the contract price. Both bonds shall be supplied at the signing of the contract.
8. **NON-PUBLIC WORKS BIDS:** A performance bond will be required for this bid. The amount of the bond will be 100% of the contract price unless otherwise indicated in the specifications. The performance bond shall be supplied at the signing of the contract.
9. **NON-PUBLIC WORKS BIDS:** A payment bond will be required for this bid. The amount of the bond will be 100% of the contract price unless otherwise indicated in the specifications. The payment bond shall be supplied at the signing of the contract.
10. All bidders must comply with the requirements stated in the attached "Standard Insurance Requirements" sheet attached to this bid solicitation. Failure to comply with this instruction will result in bid rejection.
11. A bid bond will be required with bid submission in the amount of 5% of the total bid, unless otherwise stated in the bid specifications. Acceptable forms shall be limited to cashier's check, certified check, or surety bid bond. All sureties must be in original format (no copies). If submitting a bid online, vendors must submit an electronic bid bond through the respective online clearinghouse bond management system(s) as indicated in the electronic bid solicitation on Central Auction House. No scanned paper copies of any bid bond will be accepted as part of the electronic bid submission.
12. This is a requirements contract to be provided on an as needed basis. JEFFERSON PARISH makes no representations on warranties with regard to minimum guaranteed quantities unless otherwise stated in the bid specifications.
13. Freight charges should be included in total cost when quoting. If not quoted FOB DELIVERED, freight must be quoted as a separate item. Bid may be rejected if not quoted FOB DELIVERED or if freight charges are not indicated on bid form.
14. **PUBLIC WORKS BIDS - Completed, Signed and Properly Notarized Affidavits Required;** This applies to all solicitations for construction, alteration or demolition of public buildings or projects, in conformity with the provisions contained in LSA-RS 38:2212.9, LSA-RS 38:2212.10, LSA-RS 38:2224, and Sec 2-923.1 of the Jefferson Parish Code of Ordinances. For bidding purposes, all bidders must submit with bid submission COMPLETED, SIGNED and PROPERLY NOTARIZED Affidavits, including: Non-Conviction Affidavit, Non-Collusion Affidavit, Campaign Contribution Affidavit, Debt Disclosures Affidavit and E-Verify Affidavit. For the convenience of vendors, all affidavits have been combined into one form entitled PUBLIC WORKS BID AFFIDAVIT. This affidavit must be submitted in its original format, and without material alteration, in order to be compliant and for the bid to be considered responsive. A scanned copy of the completed, signed and properly notarized affidavit may be submitted with the bid, however, the successful bidder must submit the original affidavit in its original format and without material alteration upon contract execution. Failure to comply will result in the bid submission being rejected as non-responsive. The Parish reserves the right to award bid to the next lowest responsive and responsible bidder in this event.
15. **NON PUBLIC WORK BIDS - Completed, Signed and Properly Notarized Affidavits Required** in conformity with the provisions contained in LSA – RS 38:2224 and Sec 2-923.1 of the Jefferson Parish Code of Ordinances. For bidding purposes, all bidders must submit with bid submission COMPLETED, SIGNED and PROPERLY NOTARIZED Affidavits, including: Non-Collusion Affidavit, Debt Disclosures Affidavit and Campaign Contribution Affidavit. For the convenience of vendors, all affidavits have been combined into one form entitled NON PUBLIC WORKS BID AFFIDAVIT. This affidavit must be submitted in its original format, and without material alteration, in order to be compliant and for the bid to be considered responsive. A scanned copy of the completed, signed and properly notarized affidavit may be submitted with the bid, however, the successful bidder must submit the original affidavit in its original format and without material alteration upon contract execution. Failure to comply will result in the bid submission being rejected as non-responsive. The Parish reserves the right to award bid to the next lowest responsive and responsible bidder in this event.
16. The ensuing contract for this bid solicitation may be eligible for FEMA reimbursement and/or Federal funding/reimbursement. As such, the referenced appendix will be applicable accordingly and shall be considered a part of the bid documents. All applicable certifications must be duly completed, signed and submitted with bid submission. Failure to submit applicable certifications with bid submission will result in bid rejection.

It shall be the duty of every parish officer, employee, department, agency, special district, board, and commission: and the duty of every contractor, subcontractor, and licensee of the parish, and the duty of every applicant for certification of eligibility for a parish contract or program, to cooperate with the Inspector General in any investigation, audit, inspection, performance review, or hearing pursuant to JPCO 2-155.10(19). By signing this document, every corporation, partnership, or person contracting with PARISH, whether by cooperative endeavor, intergovernmental agreement, bid, proposal, application or solicitation for a parish contract, and every application for certification of eligibility for a parish contract or program, attests that it understands and will abide by all provisions of JPCO 2-155.10.



DATE: 9/18/2020

INVITATION TO BID  
THIS IS NOT AN ORDER

Page: 4

BID NO.: 50-00132245

**JEFFERSON PARISH**

PURCHASING DEPARTMENT  
P.O. BOX 9  
GRETN, LA. 70054-0009  
504-364-2678

VENDOR: 27118 BLANK BID COPY VENDOR

BUYER: DABRAHAM

As per LSA-RS 47:301 et seq., all governmental bodies are excluded from payment of sales taxes to any Louisiana taxing body. Quotations shall be based on F.O.B. Agency warehouse or jobsite, anywhere within the Parish as designated by the Purchasing Department.

JEFFERSON PARISH reserves the right to cancel all or any part of an order if not shipped promptly. No charges will be allowed for parking or cartage unless specified in quotation. The order must not be filled at a higher price than quoted. JEFFERSON PARISH reserves the right to cancel at any time and for any reason by issuing a THIRTY (30) day written notice to the contractor.

JEFFERSON PARISH is expecting all products to be new and all work to be done in workman-like manner, according to standard practices. Any deviations or alteration from the specifications must be indicated on the bid form for each item and upon request, product data for same must be submitted by the time specified by the Purchasing Department.

**DELIVERY: FOB JEFFERSON PARISH**

INDICATE DELIVERY DATE ON EQUIPMENT AND SUPPLIES

7-10 days ARO

INDICATE STARTING TIME (IN DAYS) FOR CONSTRUCTION WORK

INDICATE COMPLETION TIME (IN DAYS) FOR CONSTRUCTION WORK

In the event that addenda are issued with this bid, bidders MUST acknowledge all addenda on the bid form. Bidder must acknowledge receipt of an addendum on the bid form as indicated. Failure to acknowledge any addendum on the bid form will result in bid rejection.

Acknowledge Receipt of Addenda: NUMBER: \_\_\_\_\_

NUMBER: \_\_\_\_\_

NUMBER: \_\_\_\_\_

NUMBER: \_\_\_\_\_

LOUISIANA CONTRACTOR'S LICENSE NO.: (if applicable) \_\_\_\_\_

<b>*** ALL BIDDERS MUST COMPLETE SECTION BELOW ***</b>	
FIRM NAME: Wholesale Pump & Supply	
SIGNATURE: (Must be signed here)	TITLE: Municipal Sales
PRINT OR TYPE NAME: Greg Roch	
ADDRESS: 48513 Hwy. 51 North	
CITY, STATE: Tickfaw, LA	ZIP: 70466
TELEPHONE: (985) 542-1527	FAX: (985) 542-5804
EMAIL ADDRESS: greg.roch@wpsump.com	

TOTAL PRICE OF ALL BID ITEMS: \$ 21,477.50

## INVITATION TO BID FROM JEFFERSON PARISH - continued

BID NO.: 50-00132245

SEALED BID

ITEM NUMBER	QUANTITY	U/M	DESCRIPTION OF ARTICLES	UNIT PRICE QUOTED	TOTALS
1	2.00	EA	A one time purchase of 25HP and 75HP motors for the Department of Sewerage		
			0010 - US MOTOR 25 HP AT 1800 RPM, 284T, 208-230/460V, 3PH, TEFC HOSTILE DUTY  PREMIUM EFFICIENCY ITEM NO. HD25P2E  NOTE: FOR LAKE TAHOE AND MANHATTAN	\$ 1,765.00	\$ 3,530.00
2	3.00	EA	0020 - US MOTOR 75 HP @ 1800 RPM, 365 T, 208-230/460V, 3 PH, TEFC HOSTILE DUTY PREMIUM EFFICIENCY  NOTE: FOR COLLEDGE AND BARATARIA  DELIVER TO: WEST BANK SEWERAGE SHOP BLDG. 1450 RIVER PARK ROAD BRIDGE CITY, LA 70094 ATTN: SHANE DICKERSON	\$ 5,982.50	\$ 17,947.50
			NOTE: This bid based on ABB-Baldor Motors Data sheets for both models attached.		





WPS - HAMMOND LOUISIANA OFFICE  
48513 HWY 51 N.  
TICKFAW, LA 70466-1833

## Quotation

QUOTE #	331066
LOCATION	003
DATE	09/24/20
PAGE	1 OF 1

### BILL TO

251890  
JEFFERSON PARISH  
SEWERAGE WAREHOUSE - WB  
4901 JEFFERSON HWY  
JEFFERSON, LA 70121

### SHIP TO

WEST BANK SEWERAGE SHOP BLDG  
1450 RIVER PARK RD.  
BRIDGE CITY, LA 70094

QUOTE DATE 09/24/20	EXPIRE DATE 10/24/20	REQUIRED DATE	REFERENCE NUMBER	PAYMENT TERMS NET 30TH
WRITTEN BY ROCH, GREGORY W.			CONTACT DORIS ABRAHAM	SHIP VIA BEST WAY
FREIGHT TERMS PREPAID AND ADD			JOB NUMBER	SALES REP ROCH, GREGORY W.

PRODUCT/DESCRIPTION	QUANTITY	PRICE	U/M	EXTENSION
*SPECIAL 003 25HP 1800RPM 284T FRAME TEFC 208-230/460V 3PH BALDOR EM4103	2	1765.0000	EA	3,530.00

*SPECIAL 003 75HP 1800RPM 365T FRAME TEFC 208-230/460V 3PH BALDOR EM4316	3	5982.5000	EA	17,947.50
--	---	-----------	----	-----------

IN FACTORY STOCK IN DALLAS

LEAD TIME: 7-10 DAYS ARO

DELIVERED PRICES.

MERCHANDISE TOTAL	HANDLING	MISC CHARGE	TAX	FREIGHT	QUOTE TOTAL
21,477.50	0.00	0.00	0.00	0.00	21,477.50

Accepted:

By: \_\_\_\_\_  
Date: \_\_\_\_\_



## Product Information Packet

# EM4103T

25HP, 1775RPM, 3PH, 60HZ, 284T, 1054M, TEFC, F1



Part Detail							
Revision:	P	Status:	PRD/A	Change #:		Proprietary:	No
Type:	AC	Elec. Spec:	10WGZ651	CD Diagram:	CD0180	Mfg Plant:	
Mech. Spec:	10C151	Layout:	10LYC151	Poles:	04	Created Date:	06-08-2017
Base:	RG	Eff. Date:	09-13-2019	Leads:	9#10		

Specs			
Catalog Number:	EM4103T	Heater Indicator:	No Heater
Enclosure:	TEFC	Insulation Class:	F
Frame:	284T	Inverter Code:	Inverter Ready
Frame Material:	Iron	KVA Code:	J
Output @ Frequency:	25.000 HP @ 60 HZ	Lifting Lugs:	Standard Lifting Lugs
Synchronous Speed @ Frequency:	1800 RPM @ 60 HZ	Locked Bearing Indicator:	Locked Bearing
Voltage @ Frequency:	460.0 V @ 60 HZ	Motor Lead Quantity/Wire Size:	9 @ 10 AWG
	230.0 V @ 60 HZ	Motor Lead Exit:	Ko Box
XP Class and Group:	None	Motor Lead Termination:	Flying Leads
XP Division:	Not Applicable	Motor Type:	1054M
Agency Approvals:	UR	Mounting Arrangement:	F1
	CSA EEV	Power Factor:	81
	CSA	Product Family:	General Purpose
Auxiliary Box:	No Auxiliary Box	Pulley End Bearing Type:	Ball
Auxiliary Box Lead Termination:	None	Pulley Face Code:	Standard
Base Indicator:	Rigid	Pulley Shaft Indicator:	Standard
Bearing Grease Type:	Polyrex EM (-20F +300F)	Rodent Screen:	None
Blower:	None	Shaft Extension Location:	Pulley End

Product Information Packet: EM4103T - 25HP,1775RPM,3PH,60HZ,284T,1054M,TEFC,F1

Current @ Voltage:	31.000 A @ 460.0 V	Shaft Ground Indicator:	No Shaft Grounding
	62.000 A @ 230.0 V	Shaft Rotation:	Reversible
	64.000 A @ 208.0 V	Shaft Slinger Indicator:	Shaft Slinger
Design Code:	A	Speed Code:	Single Speed
Drip Cover:	No Drip Cover	Motor Standards:	NEMA
Duty Rating:	CONT	Starting Method:	Direct on line
Electrically Isolated Bearing:	Not Electrically Isolated	Thermal Device - Bearing:	None
Feedback Device:	NO FEEDBACK	Thermal Device - Winding:	None
Front Face Code:	Standard	Vibration Sensor Indicator:	No Vibration Sensor
Front Shaft Indicator:	None	Winding Thermal 1:	None
		Winding Thermal 2:	None



Nameplate NP3443LUA										
CAT.NO.	EM4103T			CUST. P/N				ENCL.	TEFC	
SPEC.	10C151Z651G1		CC	010A		FRAME	284T		SER.NO.	
HP	25		CLASS	F		HZ	60			
R.P.M.	1775		PH.	3		DES.	A			
VOLTS	230/460		CODE	J		ODE BRG	6309		DE BRG	6311
AMPS	62/31		USABLE AT 208V	64						
RATING	40C AMB-CONT		NEMA NOM. EFF.	93.6		GREASE	POLYREX EM			
P.F.	81		SER.F.	1.15		CT6-60H(10:1)	VT3-60H(20:1)			
USABLE AT	50Hz 25HP 190/380V 72/36A		SF	1.0						
VOLTS		AMPS		MAX. SPACE HEATER TEMP.						

## AC Induction Motor Performance Data

Record # 66703

Typical performance - not guaranteed values

Winding: 10WGZ651-R001			Type: 1054M	Enclosure: TEFC			
Nameplate Data			460 V, 60 Hz: High Voltage Connection				
Rated Output (HP)		25	Full Load Torque		74.02 LB-FT		
Volts		230/460	Start Configuration		direct on line		
Full Load Amps		62/31	Breakdown Torque		262 LB-FT		
R.P.M.		1775	Pull-up Torque		118 LB-FT		
Hz		60 Phase	3	Locked-rotor Torque		142 LB-FT	
NEMA Design Code		A	KVA Code	J	Starting Current		223 A
Service Factor (S.F.)		1.15	No-load Current		13.6 A		
NEMA Nom. Eff.		93.6	Power Factor	81	Line-line Res. @ 25°C		0.2345 Ω
Rating - Duty		40C AMB-CONT		Temp. Rise @ Rated Load		51°C	
S.F. Amps				Temp. Rise @ S.F. Load		61°C	
				Locked-rotor Power Factor		30.6	

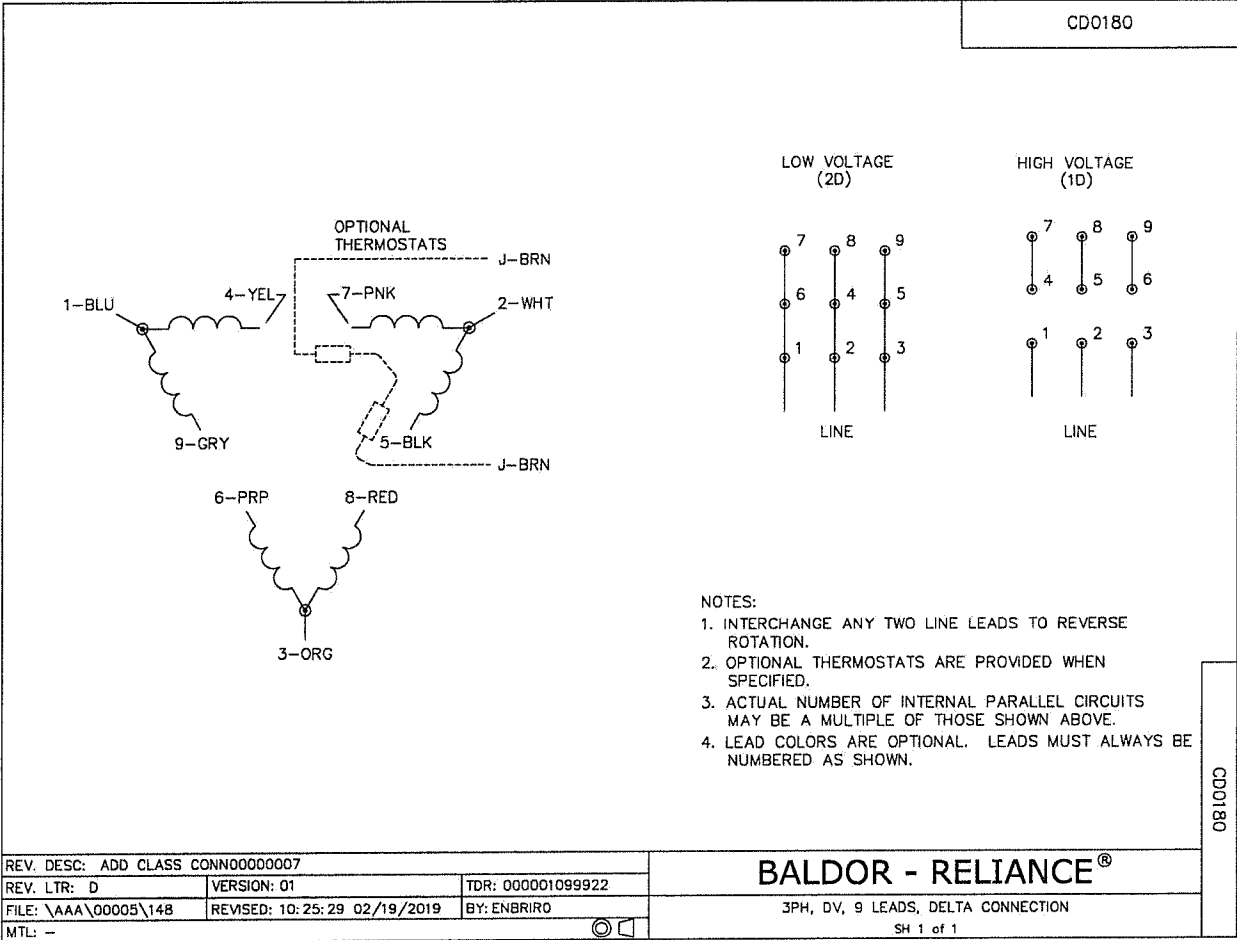
## Load Characteristics 460 V, 60 Hz, 25 HP

% of Rated Load	25	50	75	100	125	150	S.F.
Power Factor	43	65	76	81	84	85	83
Efficiency	88.3	92.8	93.9	94	93.7	93.1	93.8
Speed	1794.1	1789.3	1783.5	1777.8	1770.8	1763.8	1774
Line amperes	15.3	19.3	24.6	30.6	37.2	44.5	34.6





10LYC151





**BALDOR® • RELIANCE **

**Product Information Packet**

**EM4316T**

**75HP, 1800RPM, 60HZ, 365T, TEFC**

Copyright © All product information within this document is subject to ABB Motors and Mechanical Inc. copyright © protection, unless otherwise noted.

**BALDOR • RELIANCE** Product Information Packet: EM4316T - 75HP,1800RPM,60HZ,365T,TEFC

Part Detail							
Revision:	-	Status:	PRD/A	Change #:		Proprietary:	No
Type:	AC	Elec. Spec:	A36WG4076-DES	CD Diagram:	CD0180	Mfg Plant:	
Mech. Spec:		Layout:	A36C-0000000050	Poles:	04	Created Date:	08-12-2020
Base:		Eff. Date:	08-12-2020	Leads:	3#4,6#6		

Specs			
Catalog Number:	EM4316T	Heater Indicator:	No Heater
Enclosure:	TEFC	Insulation Class:	F
Frame:	365T	Inverter Code:	Inverter Ready
Frame Material:	Iron	IP Rating:	NONE
Output @ Frequency:	75.000 HP @ 60 HZ	KVA Code:	G
Synchronous Speed @ Frequency:	1800 RPM @ 60 HZ	Lifting Lugs:	No Lifting Lugs
Voltage @ Frequency:	460.0 V @ 60 HZ	Motor Lead Quantity/Wire Size:	3 @ 4 AWG
	230.0 V @ 60 HZ	Motor Type:	A3670M
XP Class and Group:	None	Mounting Arrangement:	F1
XP Division:	Not Applicable	Power Factor:	86
Agency Approvals:	UR	Pulley End Bearing Type:	Ball
Auxiliary Box:	No Auxiliary Box	Pulley Face Code:	Standard
Base Indicator:	Rigid	Shaft Ground Indicator:	No Shaft Grounding
Bearing Grease Type:	Polyrex EM (-20F +300F)	Shaft Rotation:	Reversible
Current @ Voltage:	187.000 A @ 208.0 V	Shaft Slinger Indicator:	No Slinger
Design Code:	B	Speed Code:	Single Speed
Drip Cover:	No Drip Cover	Motor Standards:	NEMA
Duty Rating:	CONT	Starting Method:	Direct on line

Product Information Packet: EM4316T - 75HP,1800RPM,60HZ,365T,TEFC

Enclosure Modification:	Severe Duty Features	Thermal Device - Bearing:	None
Feedback Device:	NO FEEDBACK	Thermal Device - Winding:	None



Nameplate NP3979LUA														
CAT #		EM4316T			SER					CC		010A		
SPEC		A36C-0000000050			RATING		40C AMB-CONT							
HZ	VOLTS		AMPS		RPM	HP	CODE	SF	DES	PF	NEMA NOM. EFF			
60	230/460		172/86		1780	75	G	1.15	B	86	%	95.4	%	
PH	3	CL	F	MAX CORR KVAR	15.80	USABLE AT 208V		189	A					
BRG	DE	6313	ODE	6313	ENCL	TEFC	FR	365T	IP54					
GREASE		POLYREX EM			MTR WT		908			LBS				
USABLE AT		50HZ 60HP 190/380V 168/84A			SF		1.0							
INVERTER DUTY		CT	15-60	HZ	4:1	VT	3-60	HZ	20:1	CHP	60-90	HZ	1.5:1	1.0 SF VPWM
MAX RPM		2700												

**AC Induction Motor Performance Data**

Record # 71910

Typical performance - not guaranteed values

Winding: A36WG4076-R001			Type: A3670M		Enclosure: TEFC			
Nameplate Data			460 V, 60 Hz: High Voltage Connection					
Rated Output (HP)		75	Full Load Torque		220.4 LB-FT			
Volts		230/460	Start Configuration		direct on line			
Full Load Amps		172/86	Breakdown Torque		618 LB-FT			
R.P.M.		1780	Pull-up Torque		341 LB-FT			
Hz		60 Phase	3	Locked-rotor Torque		434 LB-FT		
NEMA Design Code		B	KVA Code	G	Starting Current		545 A	
Service Factor (S.F.)		1.15	No-load Current		27.5 A			
NEMA Nom. Eff.		95.4	Power Factor		86	Line-line Res. @ 25°C		0.081965 Ω
Rating - Duty		40C AMB-CONT		Temp. Rise @ Rated Load		60°C		
S.F. Amps				Temp. Rise @ S.F. Load		75°C		
				Locked-rotor Power Factor		31.8		

**Load Characteristics 460 V, 60 Hz, 75 HP**

% of Rated Load	25	50	75	100	125	150	S.F.
Power Factor	55	76	83	86	86	86	86
Efficiency	93.8	95.6	95.8	95.4	94.8	93.9	95
Speed	1796.6	1791.5	1787.3	1782.2	1776.4	1769.9	1779
Line amperes	33.9	48.2	66	85.5	107	131	98.4

