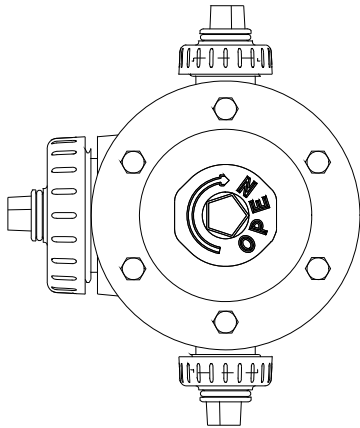
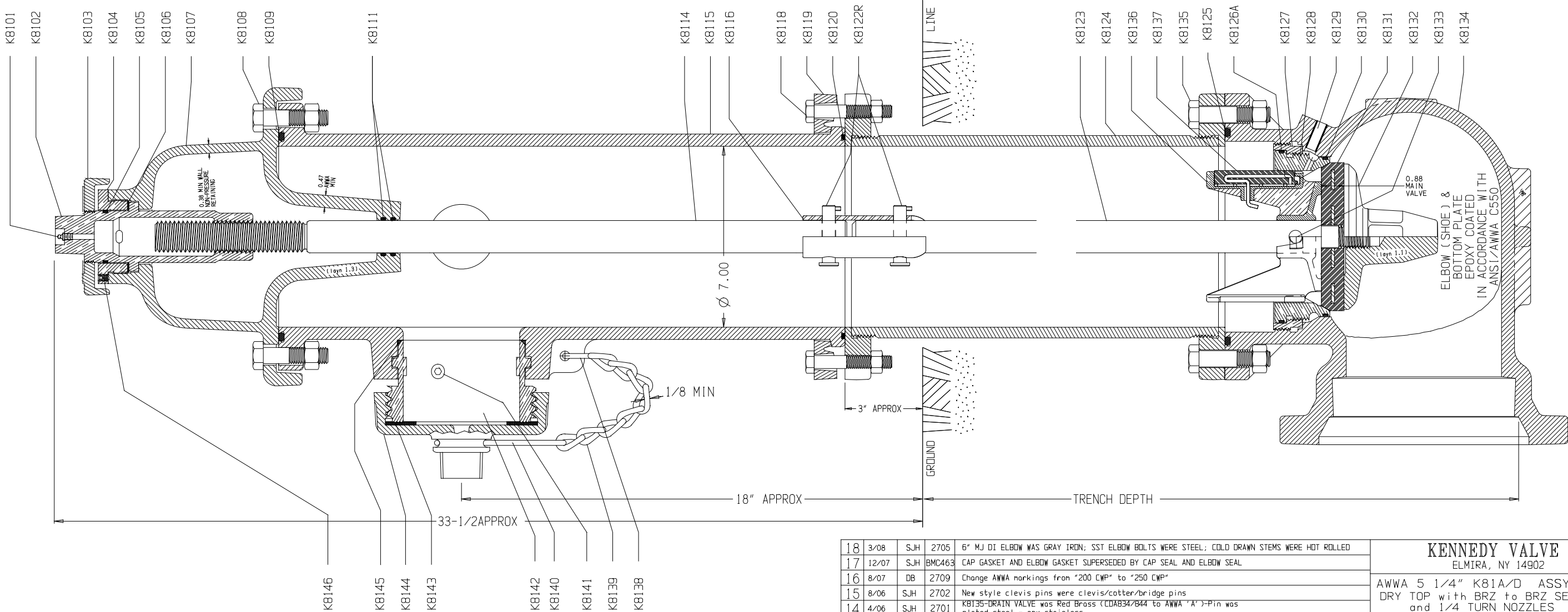


## KENNEDY VALVE

Division of McWane, Inc



HYDRANT MEETS or EXCEEDS the REQUIREMENTS of AWWA C-502



5 1/4" MVO

18	3/08	SJH	2705	6" MJ DI ELBOW WAS GRAY IRON; SST ELBOW BOLTS WERE STEEL; COLD DRAWN STEMS WERE HOT ROLLED
17	12/07	SJH	BMC463	CAP GASKET AND ELBOW GASKET SUPERSEDED BY CAP SEAL AND ELBOW SEAL
16	8/07	DB	2709	Change AWWA markings from "200 CWP" to "250 CWP"
15	8/06	SJH	2702	New style clevis pins were clevis/cotter/bridge pins
14	4/06	SJH	2701	K8135=DRAIN VALVE was Red Brass (C0A8347844 to AWWA 'A') -Pin was plated steel - now stainless
13	12/95	L2C	-	K8117R-COTTER PIN WAS K8117 Upper Coupling Roll Pin/K8121R-BRIDGE PIN WAS K8121 Hair Pin Clips /K8122R-COUPILING PIN WAS K8122 Lower Coupling Pin
12	6/95	L2C	-	Marking Revised For K-B10 (UL/FM & AWWA) or K-B1A (AWWA Only)
11	1/92	EB	X	GENERAL UPDATE; NEW STYLE DRAIN VALVE, BOTTOM PLATE AND OP STEM NUT
NO.	Date	INIT	ECN	REVISION

KENNEDY VALVE  
ELMIRA, NY 14902

AWWA 5 1/4" K81A/D ASSY DWG:  
 DRY TOP with BRZ to BRZ SEAT  
 and 1/4 TURN NOZZLES  
 - 3 Way Upper

CUSTOMER: JEFFERSON PARISH EB, LA

D	DRAWN BY: JPF	DWG NO. 80783JP EB
---	------------------	-----------------------

SCALE: NONE	FILE PATH: DRAFT>HYD	Revision 18
-------------	----------------------	-------------

TWO HOSE & ONE STEAMER SHOWN,  
TWO HOSE at 90 deg and OTHER CONFIGURATIONS AVAILABLE

## ACCESSORIES

**ORDER BY HYDRANT SIZE**

SEAT  
REMOVING  
WRENCH K8147

STEM  
NUT

COLLISION  
REPAIR KIT  
K8149

NOZZLE REMOVING  
TOOLS K8148

ORDER BY NOZZLE I.D.

EXTENSION  
KIT K8150

REQUIRED NUTS, BOLTS & GASKETS INCLUDED WITH KIT

## PARTS LIST

[illegible]

Denotes that part is available only as part of an assembly.

# Must specify type of Nozzle, Hose or Steamer.

† Recommended spare parts.

KENNEDY



## NOZZLE ARRANGEMENTS

2 HOSE & 1 STEAMER  
2 HOSE at 90°  
2 STEAMERS at 90°  
4 HOSE at 90°



MARKING  
FRONT HALF UPPER  
OF 'DUAL RATED'  
HYDRANTS  
NOT ALL HYDRANTS AVAILABLE  
DUAL LISTED-PM APPROVED  
CONSULT FACTORY

2012 CURRENT YEAR ON FRONT



KENNEDY  
ELMIRA, NY  
A W W A  
K81-A

MARKING  
FRONT HALF UPPER  
OF AWA ONLY  
HYDRANTS

The GUARDIAN Hydrant meets or exceeds all requirements of AWWA C-502.

## SPECIFICATIONS

CUSTOMER: JEFFERSON PARISH EAST BANK, LA

Spec: ---

No TURNS\DIRECTIO OPEN: 15 1/2-OPEN RIGHT

CAP &amp; OPERATING NUT SHAPE - SIZE: 1-1/8" PENTAGON

HOSE NOZZLE THDS: TWO - 2 1/2" ID; 3.162" x 6TPI

STEAMER N0771 E THRS: 4-1/2" ID: 5.442" x 4TPT

TRENCH DEPTH: PER ORDER

SIZE & TYPE of PIPE CONN. to MAIN: 6" MECHANICAL JOINT

PATENT: STI VER

1140 JOURNAL OF CLIMATE

OTHER: 316 SS B&amp;Ns, SS STEMS &amp; BREAKER COUPLING

---

---

---

1000 J. Child Fam. Stud. (2015) 24:993–1000

---



---