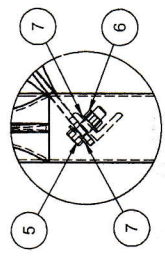
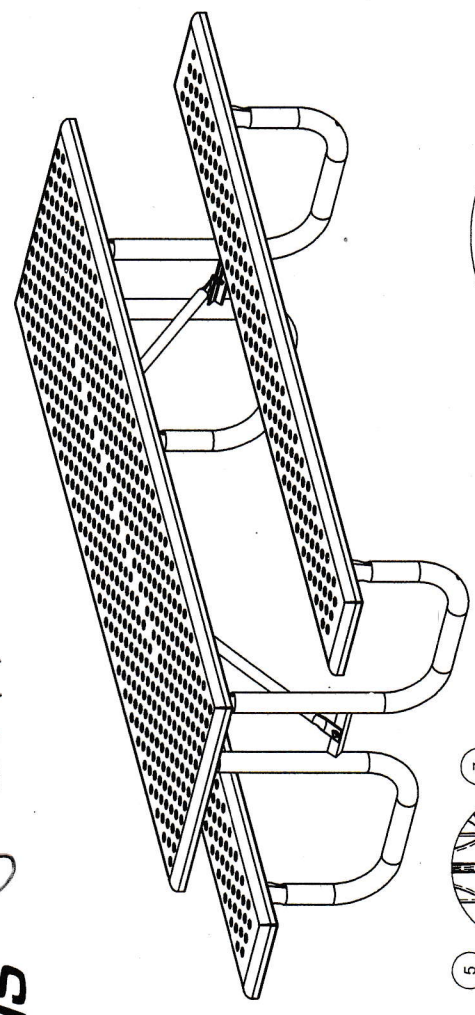
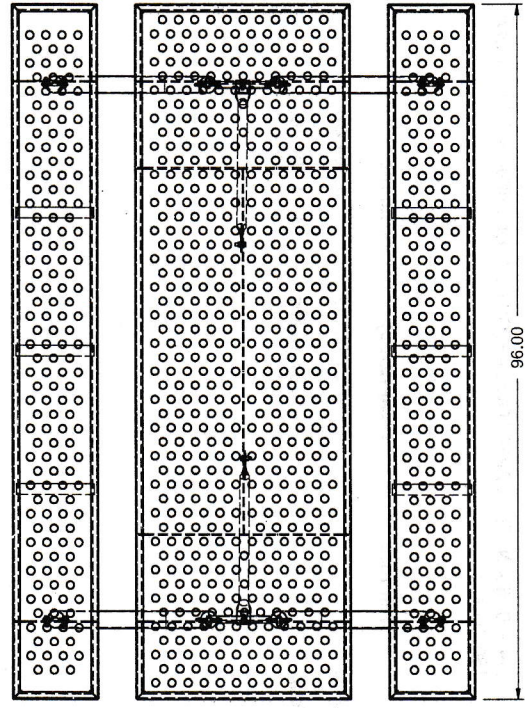
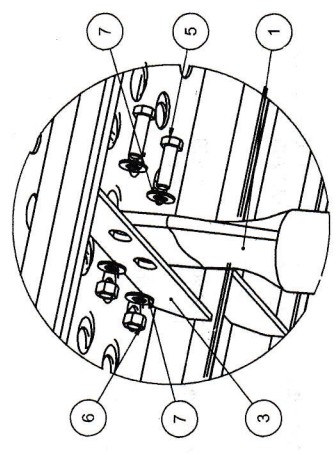


Item #0009

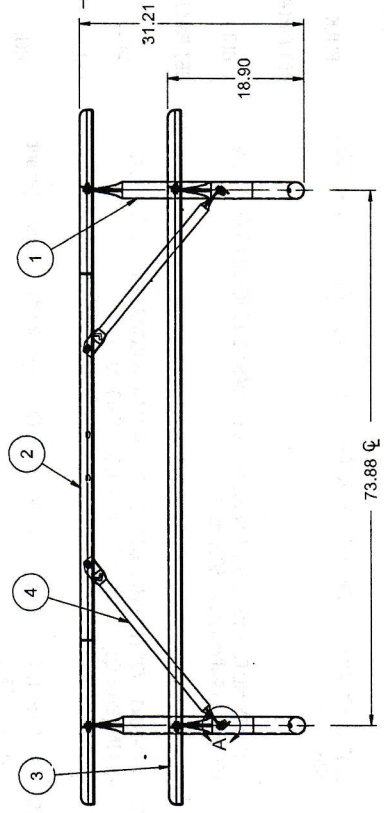
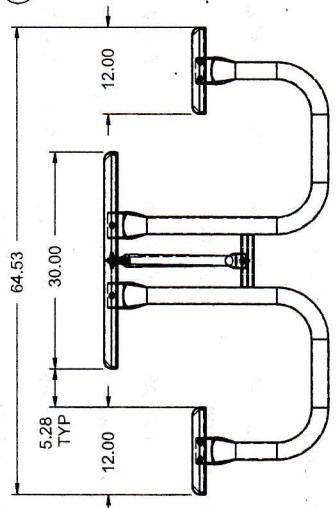
ASSEMBLY INSTRUCTIONS AND SPECIFICATIONS



DETAIL A
BRACE FASTENING



SEAT & TOP FASTENING DETAIL



Paris
EQUIPMENT MANUFACTURING LTD.

TOPS & SEATS - 13 GA HR PLASTISOL COATED
LEGS - 2-3/8" DIA x .095" ILG TUBING
BRACE - 1.315" DIA x .083" ILG TUBING
BRACKETS - 7 GA HR

ITEM NO.	DESCRIPTION	PART NO.	QTY.
1	PICNIC TABLE FRAME, HEAVY DUTY ILG		2
2	8 FT TABLE TOP, PERFORATED		1
3	8 FT SEAT, PERFORATED		2
4	TABLE BRACE		2
5	3/8-16 x 1.25 HHCS SS		16
6	HEX NUT, 3/8-16 SS		16
7	FLAT WASHER, 3/8 ANSI TYPE A SS		32

PICNIC TABLE, HEAVY DUTY, 8 FT PERF STEEL, PAINTED

MODEL: PTH-8PS (71132200) 462-010

UNLESS OTHERWISE SPECIFIED, DIMENSIONS ARE IN INCHES

SHEET 1 OF 1 ~ SCALE: 1:24 ~ 21APR03 ~ REV: C

PTH-8PE (DIAMOND PERF) 462-083

PTH-8PSG (HOT DIPPED GALVANIZED FRAME) 462-111

PTH-8PSQ (SQUARE PERF) 462-104

PTH-8PM (MOROCCAN PERF) 462-117