

DATE: 3/16/17

BID NO.: 50-0019257

INVITATION TO BID  
THIS IS NOT AN ORDER

**JEFFERSON PARISH**

PURCHASING DEPARTMENT  
P.O. BOX 9  
GRETNA, LA. 70054-0009  
504-364-2678

VENDOR: BASIC SUPPLY, LLC

BUYER: Misty Camardelle

As per LSA-RS 47:301 et seq., all governmental bodies are excluded from payment of sales taxes to any Louisiana taxing body. Quotations shall be based on F.O.B. Agency warehouse or jobsite, anywhere within the Parish as designated by the Purchasing Department.

JEFFERSON PARISH reserves the right to cancel all or any part of an order if not shipped promptly. No charges will be allowed for parking or cartage unless specified in quotation. The order must not be filled at a higher price than quoted. JEFFERSON PARISH reserves the right to cancel at any time and for any reason by issuing a THIRTY (30) day written notice to the contractor.

JEFFERSON PARISH is expecting all products to be new and all work is to be done in a workman-like manner, according to standard practices. Any deviations or alterations from the specifications must be indicated and backup documentation supplied with your quotation.

**DELIVERY: FOB JEFFERSON PARISH**

INDICATE DELIVERY DATE ON EQUIPMENT AND SUPPLIES

2 weeks

INDICATE STARTING TIME (IN DAYS) FOR CONSTRUCTION WORK

INDICATE COMPLETION TIME (IN DAYS) FOR CONSTRUCTION WORK

In the event that addenda are issued with this bid, bidders MUST acknowledge all addenda on the bid form. Bidder must acknowledge receipt of an addendum on the bid form as indicated. Failure to acknowledge any addendum on the bid form will result in bid rejection.

Acknowledge Receipt of Addenda: NUMBER: \_\_\_\_\_

NUMBER: \_\_\_\_\_

NUMBER: \_\_\_\_\_

NUMBER: \_\_\_\_\_

LOUISIANA CONTRACTOR'S LICENSE NO.: (if applicable) \_\_\_\_\_

*** ALL BIDDERS MUST COMPLETE SECTION BELOW ***	
FIRM NAME: BASIC SUPPLY, LLC	
SIGNATURE: (Must be signed here)	TITLE: MANAGER
PRINT OR TYPE NAME: JOHN ATKINSON	
ADDRESS: P.O. BOX 63066	
CITY, STATE: LAFAYETTE, LA	ZIP: 70596
TELEPHONE: ( ) 337-232-1733	FAX: ( ) 337-232-2045
EMAIL ADDRESS: charlotte@basicsupply.com	

TOTAL PRICE OF ALL BID ITEMS: \$ 1335.45







DATE: 3/14/2017

## INVITATION TO BID FROM JEFFERSON PARISH - continued

Page: 5

BID NO.: 50-00119257

SEALED BID

ITEM NUMBER	QUANTITY	U/M	DESCRIPTION OF ARTICLES	UNIT PRICE QUOTED	TOTALS
			QUANTITY OF ELECTRIC PARTS AND SUPPLIES	<u>1</u>	
1	12.00	EA	0010 - CONTROLLER, PUMP, MERCOID/DWYER BRAND PART NO. MPC, USABUEBOOK	No Bid	No Bid
			STOCK NO. MD-62440 OXcell-SV2-5 AWG SK NUMBER 00-0861770 16-14	<u>2</u>	
2	500.00	EA	0020 - FORK, STA-CON, 16-14 WIRE RANGE, NO. 8 HOLE, INSULATED,  T AND B NO. 14RB8F SK NUMBER 00-0870500	.04	20.00
				<u>3</u>	
3	12.00	EA	0030 - BOX, ROUND, 4 IN. ALUMINUM, WEATHER PROOF, FIVE 1/2 IN. HOLES	3.95	47.40
			W/4-PLUGS, THOMAS AND BETTS NO. TR11-4 SK NUMBER 00-087374A Hubbell 5361-0	<u>4</u>	
4	25.00	EA	0040 - CONNECTOR, SEALTITE, STRAIGHT, 1 IN., APPLETON NO. ST-100	4.73	118.25
			SK NUMBER 00-087719D Topaz 4735T	<u>5</u>	
5	8.00	EA	0050 - ELBOW, CONDUIT, PVC, SCHEDULE 40, SWEEP 90 DEGREE, 1 IN.	No Bid	No Bid
			SK NUMBER 00-0879760	<u>6</u>	
6	2.00	EA	0060 - MOTOR, ELECTRIC, 10 HP, 1750RPM, 208/230/460VAC, 3PH, NEMA 215T, TEFC, BALDOR NO. 3KX09 SK NUMBER 00-0891350  Teco-Westinghouse documentation attached.	575.00	1150.00

## 1000 Pcs SV2-5 AWG 16-14 Blue Pre Insulated Fork Terminals Connector

**1000 Pcs**



# 2

**Model Number : a12082000ux0677**

The furcate pre-insulated terminal is easy to connect with electrical wire to strengthen its reliability and safety.

### ▶ Customer Reviews

#### Connectors & Terminal Blocks

##### Specification:

Product Name	Furcate Pre Insulated Terminal
Model	SV2-5
Design	Fork Type
Material	PVC Plastic, Metal
Color	Silver Tone, Blue
Fit Cable Size	1.5 - 2.5mm <sup>2</sup> (A.W.G 16-14)
Tip Width	7.8mm/ 0.3"
Tube Inner Diameter	4.7mm/ 0.19"
Total Length	20.1mm/ 0.8"
Max. Current	27A
Weight	481g
Package Content	1000(±2%) x Furcate Insulated Terminal

##### Description:

- The furcate pre-insulated terminal is easy to connect with electrical wire to strengthen its reliability and safety.
- Used widely in the machiney, electric power, railway, shipbuilding, aviation, home appliance, computer or other automatic equipments.



**ROUND SPLICE BOXES****HUBBELL 5361-0 SPLICE BOX, 16.1 CU-IN, 1-1/2 IN D**

**ORGILL SKU#:** 6896161 Y  
**VENDOR:** HUBBELL ELECTRICAL  
**MODEL NUMBER:** 5361-0  
**RETAIL UPC:** 050169536100  
**INVOICE DESC:** 5361-0 GRY ALUM RND SPLC BX4IN

#3

**AVAILABLE IN:**

Tifton	Yes
Inwood	Yes
Hurricane	Yes
Kilgore	<b>Yes</b>
Sikeston	Yes
Post Falls	

**BENCHMARK RETAIL:** USD 5.84/EA**SHELF PACK:** 16**MINIMUM PURCHASE:** 1**ITEM QTY:**

Catalog Page #: F05057

**Note:**

Any prices are subject to change without notice. We will bill you at current prices prevailing at the time of shipment.

**Product Details**

For use in branch circuit wiring in wet, damp, or dry locations. Designed for use as a weatherproof junction box, and used with Bell round cluster covers and round lampholder combinations. Die cast aluminum construction. Powder coat finish. Reinforced connector outlets. Cast-in mounting lugs, four closure plugs included, and installed ground screw. 16.1 cubic inch capacity. Six 10-24 tapped holes. 4" diameter x 1-1/2" depth. UL Listed.

- ALUMINUM - WEATHERPROOF
- 5 THREADED OUTLETS
- Color : Gray
- NPT/ In : 1/2

**Description du français:** BTE EPISSURE RND ALU GRIS 4PO**Descripción español:** ARQUETA CIRCULAR DE 10,16 CM. COLOR GRIS

# Straight Liquidtight Connectors

## Steel

#4

### Features

- Industrial specification grade, screw machined steel
- UL listed liquidtight flexible metal conduit fittings are suitable for use in the following hazardous locations under: NEC 501-4(b), 502-4(a), (2)503-3(a) Class I Div. 2, Class II Div. 1 and 2, Class III Div. 1 and 2 are suitable for grounding in sizes 3/8" through 1-1/2" under NEC 351-1
- Includes sealing washer
- Corrosion resistant protection from moisture & oils
- Designed to protect against excessive vibration



### Applications

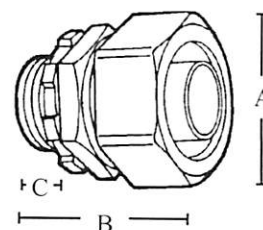
- Bonds liquidtight conduit to box or enclosure
- Straight type

### Standard Material

- Steel

### Standard Finish

- Zinc plated



UL listed liquidtight flexible metal conduit fittings are suitable for use in the following hazardous locations under: NEC 501-4(b), 502-4(a), (2)503-3(a) Class I Div. 2, Class II Div. 1 and 2, Class III Div. 1 and 2 are suitable for grounding in sizes 3/8" through 1-1/2" under NEC 351-1

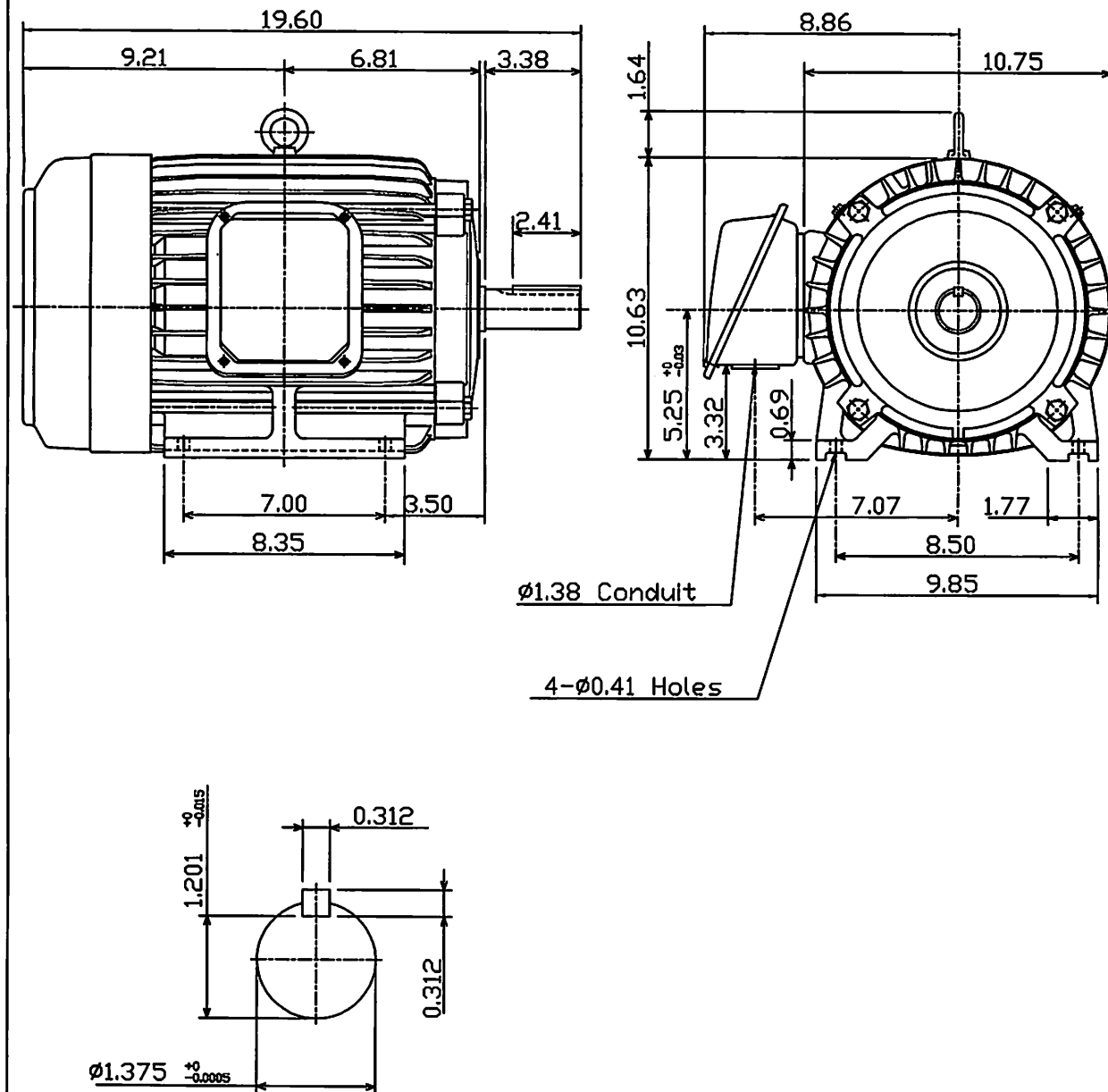
Catalog Number	UPC	Size	Unit Carton	Ship Case	Weight Case	Inches		
						A	B	C
470ST	14439	3/8" 1/2" KO	20	200	26	1.09	1.19	.63
471ST	14441	1/2"	20	200	26	1.19	1.34	.63
472ST	14451	3/4"	10	100	18	1.43	1.43	.63
473ST	14461	1"	5	50	16	1.75	1.63	.66
474ST	14471	1-1/4"	5	50	37	2.16	1.84	.67
475ST	14481	1-1/2"	2	20	21	2.38	2	.72
476ST	14491	2"	2	20	3	2.88	2.13	.72

DATE NOV. 23, 2010	OUTLINE DIMENSIONS 3-PHASE INDUCTION MOTOR	MOTOR TYPE: AEHH8P
CAT. # NP0104		FRAME NO. 215T

Pole	HP	kW	Hz	VOLT	Syn.Speed r/min(rpm)
4	10	7.5	60	230/460	1800

Ins	Rating	Dimension in	Approx Weight	Bearings
F	CONT.	Inch	176 lbs.	DE: 6308ZZ NDE: 6306ZZ

Totally Enclosed Fan-Cooled Type. Squirrel-Cage Rotor.



DWN.	J.H.LIANG	05-20-99	TEC Westinghouse	DWG NO.
CHKD.	C.S.LO	05-26-99		31049D192410
APPD.	Y.B.HUANG	05-26-99		

# TECO Westinghouse

ISSUED 8/29/2014	<b>PERFORMANCE DATA</b> <b>3-PHASE INDUCTION MOTOR</b>	ENCLOSURE TEFC
TYPE AEHH8P		CATALOG# NP0104

## NAMEPLATE INFORMATION

OUTPUT HP	KW	POLE	FRAME SIZE	VOLTAGE	HZ	RATED AMBIENT	INS. CLASS	NEMA DESIGN	TIME RATING	SERVICE FACTOR
10	7.5	4	215T	230/460	60	40°C	F	B	CONT.	1.15

## VARIABLE FREQUENCY DRIVE SERVICE

VARIABLE TORQUE				OHMS/PHASE EQUIVALENT WYE CIRCUIT (AT RATED OPERATING TEMPERATURE 25°C)				
HZ	HP	RPM	TORQUE (lb-ft)	R1	R2	X1	X2	X <sub>m</sub>
3~60	0.0013~10	90~1800	0.076~29.92	0.5301	0.6748	1.849	2.5705	77.076

CONSTANT TORQUE				CONSTANT HORSEPOWER			
HZ	HP	RPM	TORQUE (lb-ft)	HZ	HP	RPM	TORQUE (lb-ft)
6~60	1~10	180~1800	29.92	60~120	10	1800~3600	29.92~14.96

## TYPICAL PERFORMANCE

FULL LOAD RPM	EFFICIENCY				POWER FACTOR			SOUND PRESSURE LEVEL @ 3 FT Db(A)
	FULL LOAD		3/4 LOAD	1/2 LOAD	FULL LOAD	3/4 LOAD	1/2 LOAD	
	MIN. %	NOM. %	%	%	%	%	%	
1755	90.2	91.7	91	91	88	84	75.5	60

CURRENTS									NEMA KVA CODE LETTER	SAFE STALL TIME IN SECONDS	
NO LOAD			FULL LOAD			LOCKED ROTOR				COLD	HOT
AT 208 VOLT	AT 230 VOLT	AT 460 VOLT	AT 208 VOLT	AT 230 VOLT	AT 460 VOLT	AT 208 VOLT	AT 230 VOLT	AT 460 VOLT			
6.17	6.74	3.37	25.70	23.30	11.60	146.5	162.0	81	H	40	28

TORQUE				INERTIA			ACCEL TIME (DOL)		ALLOWABLE STARTS PER HOUR	
FULL LOAD (lb-ft)	LOCKED ROTOR %FLT	PULL UP %FLT	BREAK DOWN %FLT	ROTOR WR <sup>2</sup> (lb-ft <sup>2</sup> )	NEMA LOAD WK <sup>2</sup> (lb-ft <sup>2</sup> )	MAX ALLOWABLE WK <sup>2</sup> (lb-ft <sup>2</sup> )	NEMA LOAD WK <sup>2</sup> Sec	MAX ALLOWABLE WK <sup>2</sup> Sec	COLD	HOT
29.92	250	145	260	1.082	51	175	4.31	14.58	2	1

APPROVED:	M. PRATER	DRAWING NO.	31057NP0104	REVISION:	1
-----------	-----------	-------------	-------------	-----------	---