

PROPOSAL FOR

Jefferson Parish

Recreation Department



Jefferson Parish
Government Purchasing

watchfire® 

INTRODUCTION LETTER

October 27, 2020

**Jefferson Parish
Purchasing Department
200 Derbigny Street-
Suite 4400
Gretna, LA 70053**

Dear Jefferson Parish,

Thank you for considering Watchfire for your scoreboard projects. Founded in 1932, Watchfire is one of the largest LED display manufacturers in the world, with more than 65,000 active displays.

Our unique services and products are designed to outperform your expectations.

- From our Danville, IL factory, Watchfire builds the **most durable** videoboards in sports.
- We are the **only manufacturer who factory calibrates** for both color and brightness.
- We offer a **5 year warranty, a 10 parts guarantee**, and same-day parts shipment.
- Our gameday software makes it **easy to score** and fire up the crowd.
- Our systems **integrate seamlessly** with a variety of control room configurations.

As the sun rises on each new day at Watchfire, our team arrives with one determined thought: The work we do today will make our customers more successful tomorrow. From the initial concept to the final calibration, each LED display is custom-built efficiently and meticulously by the more than 350 employees working in central Illinois, including engineers, programmers, project managers, technical support, fabricators, and logistics coordinators.

Again, thank you for this opportunity to present. We look forward to working with you and building new fan excitement with new scoreboards from Watchfire.

Cordially,
Jim Bradford
Sales Manager-Sports & Indoor Division



BID DOCUMENTS



BID #50-00132425

**ONE TIME PURCHASE OF SCOREBOARDS FOR THE JEFFERSON PARISH
RECREATION DEPARTMENT**

November 3, 2020 @ 2:00 P.M.

ATTENTION VENDORS!!!

**Please review all pages and respond accordingly, complying with all
provisions in the technical specifications and Jefferson Parish Instructions
for Bidders and General Terms and Conditions. All bids must be received in
the Purchasing Department by the bid due date and time.**

**Jefferson Parish Purchasing Department
200 Derbigny Street-Suite 4400
Gretna, LA 70053
Buyer II Name: SHANNA FOLSE
Buyer Email: SFOLSE@JEFFPARISH.NET
Buyer Phone: 504-364-2680**



JEFFERSON PARISH

DEPARTMENT OF PURCHASING

CYNTHIA LEE SHENG
PARISH PRESIDENT

RENNY SIMNO
DIRECTOR

October 2020

PURCHASING DEPARTMENT ANNOUNCEMENT

Public Access to the General Government Building and Joseph S. Yenni Building:

Jefferson Parish Government buildings are open to the public. Due to COVID-19 safety precautions, all visitors will be required to wear a mask or face covering and undergo a temperature screening prior to entry.

Bid Openings:

All bids will be publicly opened at the West Bank location and via teleconference at 2:30 p.m., by calling the following number:

Dial-in Number: (504) 323-1800

Meeting ID: 181357

Bids will be accepted through Central Bidding or manual submission. Manually-submitted bids can be delivered to either Purchasing office location; however, if submitting bids on the day of the bid opening, bidders must submit at the West Bank location. Manually-submitted bids will only be accepted until October 31, 2020 for bids opening before November 1, 2020. Bids will be received until 2 p.m. The bid opening teleconference will begin at 2:30 p.m. on each bid opening date.

If you have any questions, please contact the Purchasing Department at (504) 364-2678 or e-mail purchasing@jeffparish.net for assistance.

GENERAL GOVERNMENT BLDG. — 200 DERBIGNY ST., SUITE 4400, GRETNA, LA 70053
OFFICE 504.364.2678

JOSEPH S. YENNI BLDG. — 1221 ELMWOOD PARK BLVD., SUITE 404, JEFFERSON, LA 70123
OFFICE 504.364.2678

EMAIL: PURCHASING@JEFFPARISH.NET WEBSITE: WWW.JEFFPARISH.NET



JEFFERSON PARISH

DEPARTMENT OF PURCHASING

CYNTHIA LEE SHENG
PARISH PRESIDENT

RENNY SIMNO
DIRECTOR

September 2020

Changes to Jefferson Parish Bidding Information

The Jefferson Parish Purchasing Department would like to make vendors aware of the following changes:

Total Bid Price Must Include the Cost of Naming Jefferson Parish as Additional Insured:

Bidder acknowledges that Bidder recovered the cost of any required insurance in the contract price as required by La.R.S. 9:2780.1 and that Bidder recovered any such cost for the purposes of insuring an obligation to indemnify Jefferson Parish, defend Jefferson Parish, or hold Jefferson Parish harmless and that Bidder's indemnity liability is limited to the amount of the proceeds that are payable under the insurance policy or policies that Bidder has obtained.

Electronic Procurement: Beginning November 1, 2020, Jefferson Parish will no longer accept manual bid submissions; and will only accept bid submissions electronically via our e-Procurement system, Central Bidding. Central Bidding can be accessed by visiting either www.centralbidding.com or www.jeffparishbids.net. All bidders will be required to register with Central Bidding. Jefferson Parish vendors are able to register for free by accessing the following link:
<https://www.centrauctionhouse.com/registration.php>.

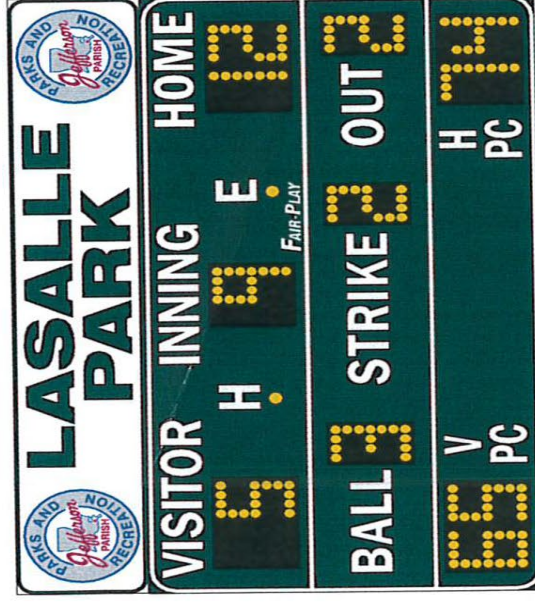
Probable Construction Cost: Per Jefferson Parish Administrative Policy, the probable construction cost is not revealed in the Jefferson Parish Bidding Documents. Jefferson Parish Administrative Policy has changed and a range of the probable construction cost will be stated in the Jefferson Parish bidding document, entitled Important Notice to All Bidders – Bid Requirements. Per Louisiana Public Bid Law, the probable construction cost will be read at the bid opening.

Insurance Requirement: All bidders must provide proof of valid insurance in the required amounts as stated in the Standard Insurance Requirements for bidding purposes. Failure to provide the proof of valid insurance in all of the required coverage amounts will result in bid rejection.

GENERAL GOVERNMENT BLDG. – 200 DERBIGNY ST., SUITE 4400, GRETN, LA 70053
OFFICE 504.364.2678

JOSEPH S. YENNI BLDG. – 1221 ELMWOOD PARK BLVD., SUITE 404, JEFFERSON, LA 70123
OFFICE 504.364.2678

EMAIL: PURCHASING@JEFFPARISH.NET WEBSITE: WWW.JEFFPARISH.NET



Fair-Play Model BA-7200PC-2 LED Baseball Scoreboards

Overall Dimensions: 10' High x 14' Wide
 Scoreboard Dimensions: 7'-6" High x 14' Wide
 Personalization Sign Dimensions: 30" High x 14' Wide



FAIR-PLAY BASEBALL SCOREBOARD



Model: **BA-7200PC-2**

DIMENSIONS:

HEIGHT:	7'-6"	LENGTH:	14'-0"	DEPTH:	10"	WEIGHT:	489 lbs.
---------	-------	---------	--------	--------	-----	---------	----------

STANDARD EQUIPMENT:

- Super-bright, wide-angle amber LED's
- Factory authorized national and local sales, service and installation
- Choose from 10 durable paint colors - Free
- Choose from 15 popular vinyl trim colors - Free
- Free Help Desk Support
- Free project design renderings
- Over 75 years of sports scoring experience
- Sport specific control console inserts
- Energy efficient LED designs
- HB-800 data connection kit
- Choice of Fair-Play's scorekeeper approved score systems*
- 4-level control console display brightness adjustment
- Changeable scoreboard game captions*
- 5-year limited warranty
- ETL/CETL listed to UL standard
- Convenient built-in service points for easy-access
- Quality engineered water resistant aluminum construction
- Complete, safe and durable display mounting system
- 9-segment digits
- Built-in lighting suppressor (for standard data direct wire only)

OPTIONAL EQUIPMENT:

- Custom paint & vinyl trim colors
- UV resistant paint
- Illuminated & non-illuminated identification & sponsorship signage
- Custom, unique signage options
- Electronic team names*
- Rear-illuminated scoreboard captions*
- Mono- or full-color electronic message display with Fair-Play's exclusive ProLine® control system
- Carrying case for scoreboard control
- Personalized vinyl home team name
- Truss and decorative steel systems
- Pitch speed display system*
- Pitch count display*
- Field use time*
- Scoreboard sport-conversion captions*
- Integrated scoring and display systems
- Scoreboard caption color (other than white)
- Extended warranties and maintenance contracts
- Lighting protector for power
- Changeable scoreboard game captions*

*Consult with a sales representative for applicable models



OPERATING TEMPERATURES:

Scoreboard display: -22° to 131° Fahrenheit (-30° to 55° Celsius)

Control console: 32° to 131° Fahrenheit (0° to 55° Celsius)

OTHER DIMENSIONS:

CAPTIONS (H" x W")		DIGIT SIZES (H")	
PITCH COUNT	19" x 32"	AT BAT SPOT	3.5"
HOME	9" x 35"	BALL	18"
VISITOR	9" x 47"	H/E SPOT	3.5"
INNING	9" x 45"	INNING	18"
BALL	9" x 31"	OUT	18"
STRIKE	9" x 42"	PITCH COUNT	15"
OUT	9" x 25"	STRIKE	18"
H	9" x 7"	TEAM SCORES	18"
E	9" x 7"		

ELECTRICAL	
VOLTAGE	120 VAC
HERTZ	60
WATTS	197
AMPS	2
PHASE	1
WIRING	2-Wire + ground
CIRCUITS REQUIRED	1
SAFETY LISTING	ETL/CETL

Fair-Play offers 15 FREE standard trim tape colors



Fair-Play offers 12 FREE standard scoreboard colors. Custom colors available



Fair-Play by Trans-Lux Corporation

1700 Delaware Avenue • Des Moines, IA 50317 • 800.247.0265 • sales@fair-play.com • fair-play.com

FAIR-PLAY

MP-80

WIRELESS SCOREBOARD CONTROLLER



CONTROLS MULTIPLE SPORTS

MULTI FUNCTIONAL WIRELESS HANDSWITCH

FAIR-PLAY SCOREBOARDS
1700 DELAWARE AVENUE
DES MOINES, IA 50317
1-800-247-0265

WWW.FAIR-PLAY.COM

REV. 1.1 • 5/2018

WIRELESS

The **MP-80** is wireless and comes preloaded with multiple sports.

SCOREBOARD INTERFACING

The **MP-80** has the capability to interface with virtually all models of FAIR-PLAY scoreboards.

LITHIUM-ION BATTERY

The battery charges through an USB connector that is plugged into a wall charger or computer. A full charge should last at least 30 hours for tournament play.

WIRELESS DUAL-HAND CONTROLLER

The **MP-80** interfaces with the multi functional wireless handswitches for timer or game clock control.

MP-80 Specifications:

Dimensions: 2" x 9.75" x 8"

Weight: 2 pounds 5 ounces

Power Requirements: 5 VDC @ 1 Amp

Included: 120 VAC-USB-A Charger with a 6' USB Cable

Handswitch Specifications:

Dimensions: 1.75" x 1.875" x 5.625"

Weight: 5 ounces

Power Requirements: 3 VDC @ 250 mA

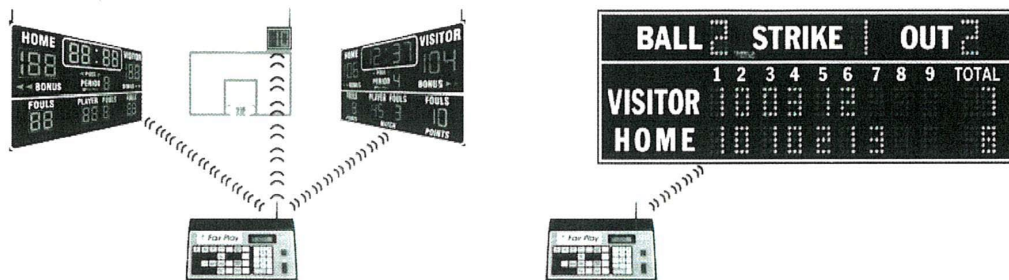
Battery Requirements: 2 AA (Included)

WIRELESS CONTROL

SYSTEM BY TRANS-LUX/FAIR-PLAY

A NEW OPTIONAL SYSTEM DEVELOPED SPECIFICALLY FOR FAIR-PLAY INDOOR AND OUTDOOR SCOREBOARDS

The graphic below illustrates the layout of the wireless control system. A transmitter with antenna is required in the MP-70 control console and one receiver with antenna is required in each scoreboard, shot timer or field timer included in the system.



INDOOR- Basketball, Volleyball and Hockey

OUTDOOR- Baseball, Football and Soccer

Operation of the wireless system is identical to a wire-connected scoreboard. In a dual scoreboard installation, one scoreboard can be connected to the control via wire and the other(s) using the wireless design as long as the control has the transmitter/antenna incorporated in it and the wireless scoreboard has a receiver/antenna. The wireless system can synchronize nearly all Fair-Play models of scoreboards from the same control!

Our wireless system functions with all new Fair-Play outdoor scoreboards and with our new indoor Bar Digit and L.E.D. digit indoor scoreboards and shot clocks. It also can be added at a later date into these products. Retrofit of existing scoreboards is possible in many circumstances.

CUSTOMER BENEFITS FROM OUR WIRELESS SYSTEM

1. It allows control operation from any location in a gym or on an athletic field where power is available.
2. No remote control cable is needed avoiding the costs and "clutter" of cable, trenching and conduit.
3. Allows high reliability and trouble free operation.
4. Can operate an unlimited number of scoreboards, with similar display information, and shot or field timers from one wireless control.
5. Long range of operation---300 feet indoors and 1000 feet outdoors.
6. Can operate adjacent scoreboard systems without interference.

WHY THE NEW FAIR-PLAY WIRELESS SYSTEM IS SUPERIOR

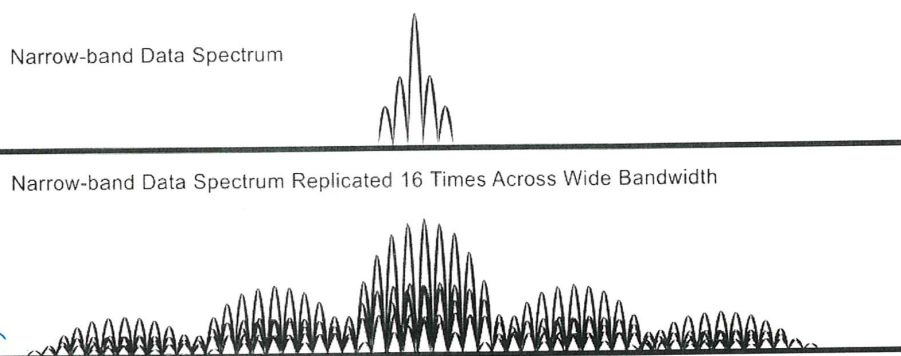
- This system was developed by Fair-Play for the unique requirements of scoreboards operation and is not an "off the shelf" system.
- To insure the reliability and security of operation required in athletic competition for timing and scoring, we designed our system using Spread Spectrum Technology.
- This design allows quick adaptation from synchronized scoreboards operating from one control to the same scoreboards operation independently from separate controls. There's no need to climb a ladder to change modes.
- Fair-Play's wireless operates fast enough for 1/10th of a second operation in the last minute of the game.

TRANS·LUX
Fair-Play

WHAT IS SPREAD SPECTRUM TECHNOLOGY AND WHY IS IT OF GREAT VALUE TO YOU IN TIMING AND SCORING OF ATHLETIC EVENTS?

Fair-Play's data transmission system utilizes a signal from the control console that continually "refreshes" the data displayed on the scoreboard or shot/field timers. The centralized control of the data formation insures accurate synchronization of two scoreboard systems (especially valuable in basketball installations) as well as very accurate timing and scoring on all our single scoreboard installations. Therefore, our wireless design must give our scoreboard users the same reliability and accuracy they have experienced in our wire-connected installations. This is why we utilized the Spread Spectrum Technology.

Our spread spectrum technology sends each "bit" of data 16 times over a wide frequency range, and does so over 10 times per second. If several of the radio bits are interrupted by an outside source, the receiver automatically "selects" and utilizes the correct data. This transmission design insures against interference from cell phones, cordless devices, microwaves and other RF devices as well as security from jamming. The graphic below demonstrates how Fair-Play's wireless system uses a wider bandwidth compared to conventional narrow band radio systems to send redundant data.



Spread Spectrum Technology was originally developed for U.S. military use to attain a high level of reliability. Now it is ready to work for you in insuring a reliable wireless operating system for your new scoreboards and timers!

WHY THE NEW FAIR-PLAY WIRELESS SYSTEM IS SUPERIOR

- Each control console furnished with one transmitter and one flexible antenna.
- Each display (scoreboard or timer) furnished with one receiver and one antenna.
- System allows for synchronized operation of two or more scoreboards from one control or independent operation of multiple scoreboards from independent controls all closely located.
- System utilizes Spread Spectrum Technology redundantly transmitting the same data at least 16 times.
- System refreshes the scoreboard with new data no less than 10 times per second for smooth and accurate operation of game clocks, including 1/10 second timing.
- System has 14 selectable channels.
- System has Radio Link Indicator Light to indicate transmission link is operational.
- System has a minimum transmission range of 300 feet indoors and 1000 feet outdoors.
- System allows unlimited scoreboards to be operated from one control console.
- System FCC certified.
- Transmitter and receiver are built into the control and scoreboard and do not require additional mounting provisions or special placement.

TRANS·LUX®
Fair-Play

Fair-Play Model MP 7200PC-2 LED Scoreboard Shall Include:

- MP-80 Controller
Color: Forest Green with White trim
- ProGuard UV-Resistant Paint Upgrade (10yr. warranty)
- Protective Carrying Case- for Controller
- Wireless Controller System Upgrade
Includes: Transmitter and Receiver
- Identification Sign (30"H x 14'W)
Includes: Park and Logo Name
- Deliver to Metairie, La

Outdoor Scoreboard(s) Above Shall Include:

- Immediate "Loaners" of all electronic components if repairs are needed.

Standard Equipment Shall Include:

- Super-bright , wide – angle amber LED's
- Sport Specific control console inserts
- 4-Level control console displays brightness adjustment
- 5- Year limited warranty
- ETL/CETL listed to UL standard
- Quality engineered water resistant aluminum construction
- 9- Segment digits
- 10-Year warranty on ALL electronic components

Dimensions for Digit Size (H")

- Inning 18 inches
- Out 18 inches
- Strike 18 inches
- Team Scores 18 inches
- Pitch Count 15 inches

Warranty:

- Provide how long product will be under Warranty (10-year Warranty specified)
- Provide specifics on what is and what is not covered under the warranty.

INVITATION TO BID
THIS IS NOT AN ORDER

DATE: 10/14/2020

Page: 1

BID NO.: 50-00132425

JEFFERSON PARISH

PURCHASING DEPARTMENT
P.O. BOX 9
GRETNA, LA. 70054-0009
504-364-2678

BUYER: sfolse@jeffparish.net

BIDS WILL BE RECEIVED ONLINE VIA WWW.JEFFPARISHBIDS.NET UNTIL 2:00 PM, 11/3/2020 AND PUBLICLY OPENED THEREAFTER IN THE WEST BANK PURCHASING DEPT, SUITE 4400, JEFFERSON PARISH GENERAL GOVERNMENT BUILDING, 200 DERBIGNY STREET, GRETNA, LA 70053 AND VIA TELECONFERENCE (DIAL-IN AT (504) 323-1800, MEETING ID: 181357) At no charge, bidders are to submit via Jefferson Parish's electronic procurement page by visiting www.jeffparishbids.net to register for this free site. Additional instructions are included in the text box highlighting electronic procurement.

LATE BIDS WILL NOT BE ACCEPTED

NOTE: ONLY BIDS WRITTEN IN INK OR TYPEWRITTEN, AND PROPERLY SIGNED BY A MEMBER OF THE FIRM OR AUTHORIZED REPRESENTATIVE, WILL BE ACCEPTED. PENCIL AND/OR PHOTOSTATIC FIGURES OR SIGNATURES SHALL RESULT IN BID REJECTION. HOWEVER, ELECTRONIC SIGNATURES AS DEFINED IN LSA – R.S. 9:2602(8) ARE ACCEPTABLE. SIGNATURE MUST BE A SECURED DIGITAL SIGNATURE.

INSTRUCTIONS FOR BIDDERS AND GENERAL CONDITIONS

THE FOLLOWING INSTRUCTIONS APPLY TO ALL BIDS

All bids submitted are subject to these instructions and general conditions and any special conditions and specifications contained herein, all of which are made part of this bid proposal reference. By submitting a bid, vendor agrees to comply with all provisions of Louisiana Law as well be in compliance with the Jefferson Parish Code of Ordinances, Louisiana Code of Ethics, applicable Jefferson Parish ethical standards and Jefferson Parish Resolution No. 113646 and/or Resolution No. 113647.

Jefferson Parish adheres to the Louisiana Code of Governmental Ethics, contained in Louisiana Revised Statutes Annotated, R.S. 42:1101, et seq. Vendor/Proposer by this submission, warrants that there are no "conflicts of interest" related to this procurement that would violate applicable Louisiana Law. Violation of the Louisiana Code of Governmental Ethics may result in rescission of contract, permit or licenses, and the imposition of fines and/or penalties, without contractual liability to the public in accordance with applicable law.

All vendors submitting bids should register as a Jefferson Parish vendor if not already yet registered. Registration forms may be downloaded from <http://purchasing.jeffparish.net> and by clicking on Vendor Information. Current W-9 forms with respective Tax Identification numbers and vendor applications may be submitted at any time; however, if your company is not registered and/or a current W-9 form is not on file, vendor registration is mandatory. Vendors may experience a delay in payment if your company is not a registered vendor with Jefferson Parish.

All quotations shall be based on F.O.B. Agency warehouse or job site, anywhere within the Parish as designated by the Purchasing Department. This provision does not apply to public works projects

JEFFERSON PARISH requires all products to be new (current) and all work must be performed according to standard practices for the project. Unless otherwise specified, no aftermarket parts will be accepted. Unless otherwise specified, all workmanship and materials must have at least one (1) year guaranty, in writing, from the date of delivery and/or acceptance of the project. Any deviations or alterations from the specifications must be indicated and/or supporting documentation supplied with bid submission.

Bidders should submit all questions in writing via email to the buyer's email address as indicated above, no later than Five (5) working days prior to the bid opening. Bid numbers should be mentioned in all requests. If submitting online, vendors may send questions via the E-Procurement site no later than Five (5) working days prior to the bid opening.

If this bid requires a pre-bid conference (see Additional Requirements section), bidders are advised that such conference will be held to allow bidders the opportunity to identify any discrepancies in the bid specifications and seek further clarification regarding instructions. The Purchasing Department will issue a written response to bidders' questions in the form of an Addendum. Please note that all official communication will be expressed in the form of an addendum.

Visit our website at [HTTP://PURCHASING.JEFFPARISH.NET](http://PURCHASING.JEFFPARISH.NET)

All formal Addenda require written acknowledgement on the bid form by the bidder. Failure to acknowledge an Addendum on the bid form shall cause the bid to be rejected. JEFFERSON PARISH reserves the right to award bid to next lowest responsive and responsible bidder in this event.

JEFFERSON PARISH will accept one price for each item unless otherwise indicated. Two or more prices for one item will result in bid rejection. Bidders are required to complete, sign and return the bid form and/or complete and return the associated line item pricing forms as indicated. Vendors must not alter the bid forms. Doing so will cause the bid to be rejected.

A corporate resolution or written evidence of the individual signing the bid having such authority must be submitted with the bid. Failure to comply will cause bid to be rejected. For corporate entities, such written evidence may be a printout of the Louisiana Secretary of State's website listing the signatory as an officer. Such printout shall be included with the bid submission. Bids submitted by Owners or Sole Proprietorships must include certification that he or she owns the entity for which the bid is signed. This documentation must be submitted with the bid. Failure to do so will result in bid rejection.

NOTE: A sample corporate resolution can be downloaded from our website <http://purchasing.jeffparish.net> or you may provide your own document. A sample certification of sole proprietorship can also be downloaded from our website <http://purchasing.jeffparish.net> or you may provide your own document.

INSTRUCTIONS FOR BIDDERS AND GENERAL CONDITIONS

A. AWARD OF CONTRACT: JEFFERSON PARISH reserves the right to award contracts or place orders on a lump sum or individual item basis, or such combination, as shall in its judgment be in the best interest of JEFFERSON PARISH. Every contract or order shall be awarded to the LOWEST RESPONSIVE and RESPONSIBLE BIDDER, taking into consideration the CONFORMITY WITH THE SPECIFICATIONS and the DELIVERY AND/OR COMPLETION DATE. SPLIT AWARDS MADE TO SEVERAL VENDORS WILL ONLY BE GRANTED TO THOSE DEEMED RESPONSIVE AND RESPONSIBLE.

All bid prices shall remain valid for 45 days. Jefferson Parish and the lowest responsive and responsible bidder(s) by mutual written consent may mutually agree to extend the deadline for award by one (1) or more extensions of thirty (30) calendar days.

PROTESTS: Only those vendors that submit bids in response to this solicitation may protest any element of the procurement, in writing to the Director of the Purchasing Department. Written protest must be received within 48 hours of the release of the bid tabulation by the Purchasing Department. After consultation, the Parish Attorney's Office will then respond to protests in writing. (For more information, please see Chapter 2, Article VII, Division 2, Sec. 2-914.1 of the Jefferson Parish Code of Ordinances.)

PREFERENCE: Unless federal funding is directly spent by Jefferson Parish for this purchase, preference is hereby given to materials, supplies, and provisions produced, manufactured or grown in Louisiana, quality being equal to articles offered by competitors outside the state. "LSA – R.S. 38:2251-2261"

B. USE OF BRAND NAMES AND STOCK NUMBERS: Where brand names and stock numbers are specified, it is for the purpose of establishing certain minimum standards of quality. Bids may be submitted for products of equal quality, provided brand names and stock numbers are specified. Complete product data may be required prior to award.

C. CANCELLATION OF CONTRACT: JEFFERSON PARISH reserves the right to cancel all or any part if not shipped promptly. No charges will be allowed for parking or cartage unless specified in quotation. The order must not be filled at a higher price than quoted. JEFFERSON PARISH reserves the right to cancel any contract at any time and for any reason by issuing a THIRTY (30) day written notice to the contractor.

For good cause and as consideration for executing a contract with Jefferson Parish, vendor conveys, sells, assigns and transfers to Jefferson Parish or its assigns all rights, title and interest in and to all causes of action it may now or hereafter acquire under the antitrust laws of the United States and the State of Louisiana, relating to the particular good or services purchased or acquired by Jefferson Parish.

D. PRICES: Jefferson Parish is exempt from paying sales tax under LSA-R.S. 47:301 (8)(c). All prices for purchases by Jefferson Parish of supplies and materials shall be quoted in the unit of measure specified and, unless otherwise specified, shall be exclusive of state and local taxes. For purchases of labor and materials, the Contractor shall not pay any state or local sales or use taxes on materials and equipment which are affixed and made part of the immovable property of the project or which is permanently incorporated in the project (hereinafter referred to as "applicable materials and equipment"). All purchases of applicable materials or equipment shall be made by the contractor on behalf of and as the agent of Jefferson Parish (Owner), a political subdivision of the State of Louisiana. No state and local sales and use taxes are owed on applicable materials and equipment under the provisions of Act 1029 of the 1991 Regular Session – Louisiana Revised Statute 47:301(8)(c). Owner will furnish to contractor a certificate form which certifies that Owner is not required to pay such state or local sales and use taxes, and contractor shall furnish a copy of such certificate to all vendors or suppliers of the applicable materials and equipment. The price quoted for work shall be stated in figures. In the event there is a difference in unit prices and totals, the unit price shall prevail.

Quantities listed are for bidding purposes only. Actual requirements may be more or less than quantities listed.

Bidders are not to exclude from participation in, deny the benefits of, or subject to discrimination under any program or activity, any person in the United States on the grounds of race, color, national origin, or sex; nor discriminate on the basis of age under the Age Discrimination Act of 1975, or with respect to an otherwise qualified handicapped individual as provided in Section 504 of the Rehabilitation Act of 1973, or on the basis of religion, except that any exemption from such prohibition against discrimination on the basis of religion as provided in the Civil Rights Act of 1964, or Title VI and VII of the Act of April 11, 1968, shall also apply. This assurance includes compliance with the administrative requirements of the Revenue Sharing final handicapped discrimination provisions contained in Section 51.55 (c), (d), (e), and (k)(5) of the Regulations. New construction or renovation projects must comply with Section 504 of the 1973 Rehabilitation Act, as amended, in accordance with the American National Standard Institute's specifications (ANSI A17.1-1961).

INSTRUCTIONS FOR BIDDERS AND GENERAL CONDITIONS

Jefferson Parish and its partners as the recipients of federal funds are fully committed to awarding a contract(s) to firm(s) that will provide high quality services and that are dedicated to diversity and to containing costs. Thus, Jefferson Parish strongly encourages the involvement of minority and/or woman-owned business enterprises (DBE's, including MBE's, WBE's and SBE's) to stimulate participation in procurement and assistance programs.

The purpose and intention of this invitation to bid is to afford all suppliers an equal opportunity to bid on all construction, maintenance, repair, operating supplies and/or equipment listed in this bid proposal. JEFFERSON PARISH WILL ACCEPT ONE BID ONLY FROM EACH VENDOR. Items bid must meet specifications.

Advertised bids will be tabulated and a copy of the tabulation will be forwarded to each responding bidder.

IN ACCORDANCE WITH STATE REGULATIONS JEFFERSON PARISH OFFERS ELECTRONIC PROCUREMENT TO ALL VENDORS

This electronic procurement system allows vendors the convenience of reviewing and submitting bids online.

This is a secure site and authorized personnel have limited read access only. Bidders are to submit electronically using this free service; while the website accepts various file types, one single PDF file containing all appropriate and required bid documents is preferred. Bidders submitting uploaded images of bid responses are solely responsible for clarity. If uploaded images/documents are not legible, then bidder's submission will be rejected. Please note all requirements contained in this bid package for electronic bid submission.

Please visit our E-Procurement Page at www.jeffparishbids.net to register and view Jefferson Parish solicitations. For more information, please visit the Purchasing Department page at <http://purchasing.jeffparish.net>.

The general specifications for construction projects and the purchase of materials, services and/or supplies are those adopted by the JEFFERSON PARISH Council by Resolution No. 113646 or 113647 as amended. The general conditions adopted by this resolution shall be considered as much a part of this document as if they were written wholly herein. A copy may be obtained from the Office of the Parish Clerk, Suite 6700, Jefferson Parish General Government Building, 200 Derbigny Street, Gretna, LA 70053. You may also obtain a copy by visiting the Purchasing Department webpage at <http://purchasing.jeffparish.net> and clicking on Online Forms.

ADDITIONAL REQUIREMENTS FOR THIS BID

PLEASE MATCH THE NUMBERS PRINTED IN THIS BOX WITH THE
CORRESPONDING INSTRUCTIONS BELOW.

13, 15

1. All bidders must attend the MANDATORY pre-bid conference and will be required to sign in and out as evidence of attendance. In accordance with LSA R.S. 38:2212(I), all prospective bidders shall be present at the beginning of the MANDATORY pre-bid conference and shall remain in attendance for the duration of the conference. Any prospective bidder who fails to attend the conference or remain for the duration shall be prohibited from submitting a bid for the project.
2. Attendance to this pre-bid conference is optional. However, failure to attend the pre-bid conference shall not relieve the bidder of responsibility for information discussed at the conference. Furthermore, failure to attend the pre-bid conference and inspection does not relieve the successful bidder from the necessity of furnishing materials or performing any work that may be required to complete the work in accordance with the specification with no additional cost to the owner.
3. Contractor must hold current applicable JEFFERSON PARISH licenses with the Department of Inspection and Code Enforcement. Contractor shall obtain any and all permits required by the JEFFERSON PARISH Department of Inspection and Code Enforcement. The contractor shall be responsible for the payment of these permits. All permits must be obtained prior to the start of the project. Contractor must also hold any and all applicable Federal and State licenses. Contractor shall be responsible for the payment of these permits and shall obtain them prior to the start of the project.
4. A LA State Contractor's License will be required in accordance with LSA R.S. 37-2150 et. seq. and such license number will be shown on the outside of the bid electronic envelope. Failure to comply will cause the bid to be rejected. When submitting the bid electronically, the license number must be entered in the appropriate field in the electronic procurement system. Failure to comply will cause the bid to be rejected.

INSTRUCTIONS FOR BIDDERS AND GENERAL CONDITIONS

5. It is the bidder's responsibility to visit the job site and evaluate the job before submitting a bid.
6. Job site must be clean and free of all litter and debris daily and upon completion of the contract. Passageways must be kept clean and free of material, equipment, and debris at all times. Flammable material must be removed from the job site daily because storage will not be permitted on the premises. Precautions must be exercised at all times to safeguard the welfare of JEFFERSON PARISH and the general public.
7. PUBLIC WORKS BIDS: All awards for public works in excess of \$5,000.00 will be reduced to a formal contract which shall be recorded at the contractor's expense with the Clerk of Court and Ex-Officio Recorder of Mortgages for the Parish of Jefferson. A price list of recordation costs may be obtained from the Clerk of Court and Ex-Officio Recorder of Mortgages for the Parish of Jefferson. All awards in excess of \$25,000.00 will require both a performance and a payment bond. Unless otherwise stated in the bid specifications, the performance bond requirements shall be 100% of the contract price. Unless otherwise state in the bid specifications, the payment bond requirements shall be 100% of the contract price. Both bonds shall be supplied at the signing of the contract.
8. NON-PUBLIC WORKS BIDS: A performance bond will be required for this bid. The amount of the bond will be 100% of the contract price unless otherwise indicated in the specifications. The performance bond shall be supplied at the signing of the contract.
9. NON-PUBLIC WORKS BIDS: A payment bond will be required for this bid. The amount of the bond will be 100% of the contract price unless otherwise indicated in the specifications. The payment bond shall be supplied at the signing of the contract.
10. All bidders must comply with the requirements stated in the attached "Standard Insurance Requirements" sheet attached to this bid solicitation. Failure to comply with this instruction will result in bid rejection.
11. A bid bond will be required with bid submission in the amount of 5% of the total bid, unless otherwise stated in the bid specifications. All sureties must be in original format (no copies) When submitting a bid online, vendors must submit an electronic bid bond through the respective online clearinghouse bond management system(s) as indicated in the electronic bid solicitation on Central Auction House. No scanned paper copies of any bid bond will be accepted as part of the electronic bid submission.
12. This is a requirements contract to be provided on an as needed basis. JEFFERSON PARISH makes no representations on warranties with regard to minimum guaranteed quantities unless otherwise stated in the bid specifications.
13. Freight charges should be included in total cost when quoting. If not quoted FOB DELIVERED, freight must be quoted as a separate item. Bid may be rejected if not quoted FOB DELIVERED or if freight charges are not indicated on bid form.
14. PUBLIC WORKS BIDS - Completed, Signed and Properly Notarized Affidavits Required; This applies to all solicitations for construction, alteration or demolition of public buildings or projects, in conformity with the provisions contained in LSA-RS 38:2212.9, LSA-RS 38:2212.10, LSA-RS 38:2224, and Sec 2-923.1 of the Jefferson Parish Code of Ordinances. For bidding purposes, all bidders must submit with bid submission COMPLETED, SIGNED and PROPERLY NOTARIZED Affidavits, including: Non-Conviction Affidavit, Non-Collusion Affidavit, Campaign Contribution Affidavit, Debt Disclosures Affidavit and E-Verify Affidavit. For the convenience of vendors, all affidavits have been combined into one form entitled PUBLIC WORKS BID AFFIDAVIT. This affidavit must be submitted in its original format, and without material alteration, in order to be compliant and for the bid to be considered responsive. A scanned copy of the completed, signed and properly notarized affidavit may be submitted with the bid, however, the successful bidder must submit the original affidavit in its original format and without material alteration upon contract execution. Failure to comply will result in the bid submission being rejected as non-responsive. The Parish reserves the right to award bid to the next lowest responsive and responsible bidder in this event.
15. NON-PUBLIC WORK BIDS - Completed, Signed and Properly Notarized Affidavits Required in conformity with the provisions contained in LSA – RS 38:2224 and Sec 2-923.1 of the Jefferson Parish Code of Ordinances. For bidding purposes, all bidders must submit with bid submission COMPLETED, SIGNED and PROPERLY NOTARIZED Affidavits, including: Non-Collusion Affidavit, Debt Disclosures Affidavit and Campaign Contribution Affidavit. For the convenience of vendors, all affidavits have been combined into one form entitled NON-PUBLIC WORKS BID AFFIDAVIT. This affidavit must be submitted in its original format, and without material alteration, in order to be compliant and for the bid to be considered responsive. A scanned copy of the completed, signed and properly notarized affidavit may be submitted with the bid, however, the successful bidder must submit the original affidavit in its original format and without material alteration upon contract execution. Failure to comply will result in the bid submission being rejected as non-responsive. The Parish reserves the right to award bid to the next lowest responsive and responsible bidder in this event.
16. The ensuing contract for this bid solicitation may be eligible for FEMA reimbursement and/or Federal funding/reimbursement. As such, the referenced appendix will be applicable accordingly and shall be considered a part of the bid documents. All applicable certifications must be duly completed, signed and submitted with bid submission. Failure to submit applicable certifications with bid submission will result in bid rejection.

It shall be the duty of every parish officer, employee, department, agency, special district, board, and commission: and the duty of every contractor, subcontractor, and licensee of the parish, and the duty of every applicant for certification of eligibility for a parish contract or program, to cooperate with the Inspector General in any investigation, audit, inspection, performance review, or hearing pursuant to JPCO 2-155.10(19). By signing this document, every corporation, partnership, or person contracting with PARISH, whether by cooperative endeavor, intergovernmental agreement, bid, proposal, application or solicitation for a parish contract, and every application for certification of eligibility for a parish contract or program, attests that it understands and will abide by all provisions of JPCO 2-155.10.

BID NO.: 50-00132425

BID FORM
Non-Public Works**All Public Work Projects are required to use the Louisiana Uniform Public Work Bid Form**

All prices must be held firm unless an escalation provision is requested in this bid. Jefferson Parish will allow one escalation during the term of the contract, which may not exceed the U.S. Bureau of Labor Statistics National Index for all Urban Consumers, unadjusted 12-month figure. The most recently published figure issued at the time an adjustment is requested will be used. A request must be made in writing by the vendor, and the escalation will only be applied to purchases made after the request is made.

Are you requesting an escalation provision?

YES _____ NO x

MAXIMUM ESCALATION PERCENTAGE REQUESTED _____ %

INITIAL BID PRICES WILL REMAIN FIRM THROUGH THE DATE OF 12/1/2020.

For the purposes of comparison of bids when an escalation provision is requested, Jefferson Parish will apply the maximum escalation percentage quoted by the bidder to the period to which it is applied in the bid. The initial price and the escalation will be used to calculate the total bid price. It will be assumed, for comparison of prices only, that an equal amount of material or labor is purchased each month throughout the entire contract.

DELIVERY: FOB JEFFERSON PARISH

INDICATE DELIVERY DATE ON EQUIPMENT AND SUPPLIES

6-7 weeks from order/deposit

LOUISIANA CONTRACTOR'S LICENSE NO.: (if applicable)

N/A**THIS SECTION MUST BE COMPLETED BY BIDDER:**FIRM NAME: Watchfire SignsADDRESS: 1015 Maple StreetCITY, STATE: Danville, IL ZIP: 61832TELEPHONE: (800) 637-2645 FAX: ()EMAIL ADDRESS: jim.bradford@watchfiresigns.com

In the event that addenda are issued with this bid, bidders **MUST** acknowledge all addenda on the bid form. Bidder must acknowledge receipt of an addendum on the bid form by placing the addendum number as indicated. Failure to acknowledge any addendum on the bid form will result in bid rejection.

Acknowledge Receipt of Addenda: NUMBER: _____

NUMBER: _____

NUMBER: _____

NUMBER: _____

TOTAL PRICE OF ALL BID ITEMS: \$ 27,200.00AUTHORIZED SIGNATURE: Jim BradfordJames Bradford

Printed Name

TITLE: East Region Sports/Indoor Manager

SIGNING INDICATES YOU HAVE READ AND COMPLY WITH THE INSTRUCTIONS AND CONDITIONS.

NOTE: All bids should be returned with the BID NUMBER and BID OPENING DATE indicated on the outside of the electronic envelope submitted to the Purchasing Department.

INVITATION TO BID FROM JEFFERSON PARISH - continued

BID NO.: 50-00132425

SEALED BID

ITEM NUMBER	QUANTITY	U/M	DESCRIPTION OF ARTICLES	UNIT PRICE QUOTED	TOTALS
1	4.00	EA	<p>ONE TIME PURCHASE OF SCOREBOARDS FOR THE JEFFERSON PARISH RECREATION DEPARTMENT</p> <p>0001-Fair Play Model BA-7200PC-2 LED OR EQUAL , Baseball Scoreboards Includes: MP-80 Controller, Color: Forest Green. ProGuard UV-Resistant Upgrades (10 year warranty), Protective Carrying Cases - for controllers includes: Transmitter and Receiver. Personalization Signs (30 inch height x 14 feet width) includes: City logo and name. Outdoor Scoreboard shall include: Immediate "Loaners" of all electronic components if repairs are needed. Standard Equipment shall include: Super-bright , wide- angle amber LED'S Sport specific control console inserts. 4-Level control console display brightness adjustment , 5-year warranty, ETL/CETL listed to UL standard. Quality engineered water resistant aluminum construction , 9- Segment digits. 10-Year Warranty on ALL electronic components . Dimensions for Digit Size(H") Inning 18 inches , Out 18 inches , Strike 18 inches , Team scores 18 inches Pitch Count 15 inches.</p>	\$6,800	\$27,200

Non-Public Works Bid Affidavit Instructions

- **Affidavit is supplied as a courtesy to Affiants, but it is the responsibility of the affiant to insure the affidavit they submit to Jefferson Parish complies, in both form and content, with federal, state and parish laws.**
- **Affidavit must be signed by an authorized representative of the entity or the affidavit will not be accepted.**
- **Affidavit must be notarized or the affidavit will not be accepted.**
- **Notary must sign name, print name, and include bar/notary number, or the affidavit will not be accepted.**
- **Affiant MUST select either A or B when required or the affidavit will not be accepted.**
- **Affiants who select choice A must include an attachment or the affidavit will not be accepted.**
- **If both choice A and B are selected, the affidavit will not be accepted.**
- **Affidavit marked N/A will not be accepted.**
- **It is the responsibility of the Affiant to submit a new affidavit if any additional campaign contributions are made after the affidavit is executed but prior to the time the council acts on the matter.**

Instruction sheet may be omitted when submitting the affidavit

Non-Public Works Bid

AFFIDAVIT

STATE OF Louisiana

PARISH/COUNTY OF Jefferson Parish

BEFORE ME, the undersigned authority, personally came and appeared: _____
James Bradford, (Affiant) who after being by me duly sworn, deposed and said that
he/she is the fully authorized Sales Manager of Watchfire Signs (Entity),
the party who submitted a bid in response to Bid Number 50-00132425, to the Parish of
Jefferson.

Affiant further said:

Campaign Contribution Disclosures

(Choose A or B, if option A is indicated please include the required attachment):

Choice A _____ Attached hereto is a list of all campaign contributions, including the date and amount of each contribution, made to current or former elected officials of the Parish of Jefferson by Entity, Affiant, and/or officers, directors and owners, including employees, owning 25% or more of the Entity during the two-year period immediately preceding the date of this affidavit or the current term of the elected official, whichever is greater. Further, Entity, Affiant, and/or Entity Owners have not made any contributions to or in support of current or former members of the Jefferson Parish Council or the Jefferson Parish President through or in the name of another person or legal entity, either directly or indirectly.

Choice B X there are **NO** campaign contributions made which would require disclosure under Choice A of this section.

Debt Disclosures

(Choose A or B, if option A is indicated please include the required attachment):

Choice A _____ Attached hereto is a list of all debts owed by the affiant to any elected or appointed official of the Parish of Jefferson, and any and all debts owed by any elected or appointed official of the Parish to the Affiant.

Choice B X There are **NO** debts which would require disclosure under Choice A of this section.

Affiant further said:

That Affiant has employed no person, corporation, firm, association, or other organization, either directly or indirectly, to secure the public contract under which he received payment, other than persons regularly employed by the Affiant whose services in connection with the construction, alteration or demolition of the public building or project or in securing the public contract were in the regular course of their duties for Affiant; and

[The remainder of this page is intentionally left blank.]

That no part of the contract price received by Affiant was paid or will be paid to any person, corporation, firm, association, or other organization for soliciting the contract, other than the payment of their normal compensation to persons regularly employed by the Affiant whose services in connection with the construction, alteration or demolition of the public building or project were in the regular course of their duties for Affiant.

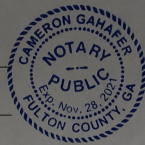
Jim Bradford
Signature of Affiant

JAMES BRADFORD
Printed Name of Affiant

SWORN AND SUBSCRIBED TO BEFORE ME
ON THE 26 DAY OF October, 2020

[Signature]
Notary Public

Cameron Gahagan
Printed Name of Notary



Notary/Bar Roll Number _____

My commission expires 11/28/21.

CORPORATE RESOLUTION

EXCERPT FROM MINUTES OF MEETING OF THE BOARD OF DIRECTORS OF

INCORPORATED.

AT THE MEETING OF DIRECTORS OF _____
INCORPORATED, DULY NOTICED AND HELD ON _____,
A QUORUM BEING THERE PRESENT, ON MOTION DULY MADE AND SECONDED. IT
WAS:

RESOLVED THAT _____, BE AND IS HEREBY
APPOINTED, CONSTITUTED AND DESIGNATED AS AGENT AND ATTORNEY-IN-
FACT OF THE CORPORATION WITH FULL POWER AND AUTHORITY TO ACT ON
BEHALF OF THIS CORPORATION IN ALL NEGOTIATIONS, BIDDING, CONCERNS
AND TRANSACTIONS WITH THE PARISH OF JEFFERSON OR ANY OF ITS AGENCIES,
DEPARTMENTS, EMPLOYEES OR AGENTS, INCLUDING BUT NOT LIMITED TO, THE
EXECUTION OF ALL BIDS, PAPERS, DOCUMENTS, AFFIDAVITS, BONDS, SURETIES,
CONTRACTS AND ACTS AND TO RECEIVE ALL PURCHASE ORDERS AND NOTICES
ISSUED PURSUANT TO THE PROVISIONS OF ANY SUCH BID OR CONTRACT, THIS
CORPORATION HEREBY RATIFYING, APPROVING, CONFIRMING, AND ACCEPTING
EACH AND EVERY SUCH ACT PERFORMED BY SAID AGENT AND ATTORNEY-IN-
FACT.

I HEREBY CERTIFY THE FOREGOING TO BE
A TRUE AND CORRECT COPY OF AN
EXCERPT OF THE MINUTES OF THE ABOVE
DATED MEETING OF THE BOARD OF
DIRECTORS OF SAID CORPORATION, AND
THE SAME HAS NOT BEEN REVOKED OR
RESCINDED.

SECRETARY-TREASURER

DATE

WATCHFIRE

QUALIFICATIONS

PROVEN HISTORY



Since building our first outdoor electronic sign controllers in 1932, we have always been a company focused on products that thrive in the outdoor elements. We've developed a solid reputation selling one display at a time on Main Street USA, to schools who expected their displays and signs to outlast and outlast.

Our past is a foundation for who we are as a company, and our present and future rely on continuous improvement and an integrated approach to designing, manufacturing and supporting our own technology.

1930s

Watchfire opened its doors in 1932 and has been an industry leader ever since.

1950s

Watchfire revolutionized electronic information in 1951, when we pioneered the incandescent time and temperature displays that lit up main streets throughout the country.

1960s

Watchfire continued to lead the way in innovation and engineering as we built building electronic teletype-controlled message centers.

1990s

Watchfire Signs made a splash in the market in 1998, when we began to engineer LED Electronic Message Centers (EMCs).

2000s

Watchfire built its first color video display in 2003. It displayed video at an astounding 30 frames per second and had a color palette of 281 trillion colors.

2010s

We added 110,000 square feet of manufacturing space in 2013, more than doubling the size of our facility. We manufacture our products under one roof. Our Help Desk provides support in the same facility as our engineering and manufacturing teams. This means that when issues arise, we can find resolutions quickly and expertly.

In 2018, Watchfire launched Ignite Sports game day software, disrupting the industry's concept of scoring and event management software. We also acquired HD Sports Boards, a nationally recognized designer and integrator of scoreboards and sports video displays.

Today

Today, Watchfire has more than **350 employees** dedicated to designing, manufacturing and supporting our LED scoreboards, displays and signs. We have more than **60,000 LED products in operation** today.

PROFESSIONAL SERVICES



Watchfire is a turnkey organization. We offer services that guide you through every stage of your scoreboard, from concept to kick off. Every one of our core services under one roof, ensuring rapid responses and the highest quality.

We want to be lifelong partners with your school. Our services and support continue with the life of your scoreboard and beyond.

SERVICES

- Project Management
- Quality Assurance (Program and Project Specific)
- Cost Management
- Construction Management
- Procurement & Contractor/Supplier Vetting
- Facility and Venue Assessment
- Concept Design
- Scoreboard Rendering
- Architectural Planning and Drawings
- Structural Engineering
- Mechanical Engineering
- Electrical Engineering
- Software Engineering
- Installation
- Inspections
- Logistics
- Onsite, Phone, Online and Knowledge Base Training
- Creative content services

KEY PROFESSIONALS

YOUR SALES TEAM

Watchfire is a turnkey organization. We offer services that guide you through every stage of your scoreboard, from concept to kick off. Your support starts with a team of scoreboard and school program experts.

Jason Cicalla | Territory Manager LA/AL/MS

8 years with Watchfire

Represents you and is your point person. Specializes in account services and creating positive customer experiences.

Tyler Kuemmerle | Sports Application Specialist

10 years with Watchfire | 12 years experience

Specializes in custom quoting and budget management, dealer/installer relations and product information.

Jim Bradford | East Region Manager--Sports & Indoor Division

2 years with Watchfire | 21 years experience

Specializes in custom quoting and budget management, dealer/installer relations and product information.

Jeff Morgan | Sales Director--Sports & Indoor Division

2 years with Watchfire | 23 years experience

Specializes in scoreboards, from conception to application, assisting in project parameters and customer support.

Kyle Dines | Vice President--Sports & Indoor Division

13 years with Watchfire | 17 years experience

Specializes in problem-solving, sales management and road mapping each project to success.



YOUR OPERATIONS TEAM



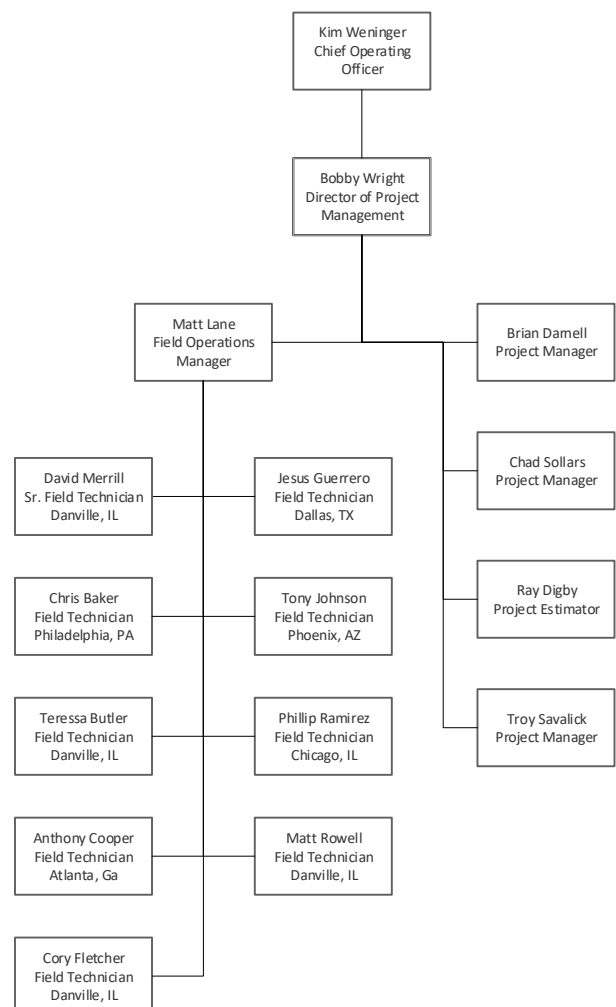
UNMATCHED EXPERTISE

At Watchfire, all our core services under one roof, ensuring rapid responses and the highest quality. At every stage, your video scoreboard will be designed and manufactured by a highly skilled team of dedicated individuals.

Project Management Team

The entire process will be managed by our Project Management Team, with more than 70 years of combined LED industry know-how, plus more than 100 years of project management experience.

The Project Management team has an extensive Research & Design and Manufacturing team they work with that includes more than 50 degreed engineers in electrical, mechanical, software, and manufacturing disciplines.



YOUR EXECUTIVE TEAM



Watchfire is proud of its hands-on executive team. Each leader will be part of your project, from idea to installation and beyond.

Steve Harriott President and CEO

10 years with Watchfire | 29 years experience

Kim Weninger | Chief Operating Officer

4 years with Watchfire | 24 years experience

Adam Grimes | Chief Financial Officer

10 years with Watchfire | 16 years experience

Kyle Dines | Vice President of Sports Sales

13 years with Watchfire | 17 years experience

Pattabi Doraiswamy | Vice President of R&D

7 years with Watchfire | 24 years experience

Carol Wade | Senior Director of Marketing

9 years with Watchfire | 26 years experience

Candy Underhill | Human Resources Manager

2 years with Watchfire | 30 years experience

Darrin Friskney | Vice President of Digital Billboard

13 years with Watchfire | 20 years experience

David Warns | Vice President of On Premise

7 years with Watchfire | 22 years experience

LOCAL KNOWLEDGE

LOCAL DEALERS

Watchfire has a dedicated network of more than 2000 experienced professional companies to help guide you through the purchasing process and ownership. This nationwide network includes authorization sign shops, installers and AV integrators. Our dealer partners are experts in the industry and they're ready to help.

at Watchfire University, our local partners receive an in-depth study of Watchfire's LED products and software. They complete certifications and partake in Watchfire's continual learning opportunities.

LOCAL LICENSED ENGINEERS

Watchfire has a network of licensed engineers across the nation, each registered to wet stamp our designs for local authorities with jurisdiction. Often overlooked, this is a crucial step in helping you get approval to proceed with installation and completion.



PRODUCT

SPECIFICATIONS

On Premise Quote



watchfire

QUOTE NUMBER: 2017469.1 (Revision 1) DATE: 10/21/2020

SIGN ID: 1433369 WF-BA-1024

Jefferson Parish Purchasing Department 9119396

Shanna Folse,
200 Derbigny Street Suite 4400
Gretna, LA 70053
504-364-2680
sfolse@jeffparish.net

Shipping Destination

Jefferson Parish Purchasing Department
200 Derbigny Street Suite 4400
Gretna, LA 70053

Job Site

Name: Jefferson Parish Recreation
Department - Scoreboard-
Address: 200 Derbigny Street Suite 4400
City: Gretna
State: LA Zip: 70053

PRODUCT SPECIFICATIONS

Model: WF-BA-1024
Cabinet Size: 7ft 6in H x 14ft L x 4in D
Approx. Weight: 504.00 Lbs.
Warranty: Standard 5 Year Watchfire warranty applies.
Mfg. Lead Time: 4-8 weeks
Electrical Service: 120 Volt, 197 Watts, 2-Wire and ground

STANDARD FEATURES

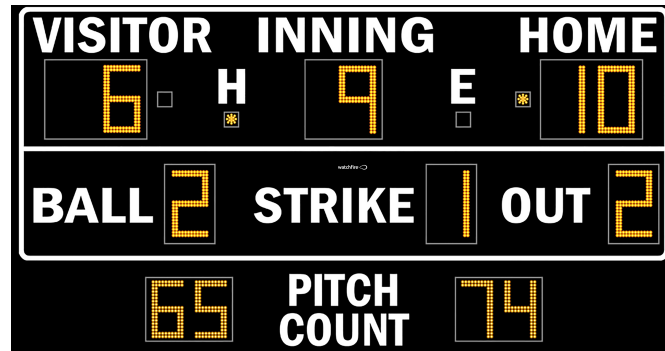
At Bat Spot 3.5"
Ball 18"
H/E Spot 3.5"
Inning 18"
Out 18"
Pitch Count 15"
Strike 18"
Team Scores 18"

OPTIONS

Cabinet Color Forest Green
LED Digit Color Amber
Scoreboard Controller C-40W (Wireless)
Caption Color Black or White
Controller Case 1 Controller Case
Hand Switches/Controllers C-15
Warranty Standard 5-Year Parts Warranty

Cabinet Color: _____

Striping / Caption Color: _____



ORDER ACCEPTANCE

QUOTE VALID UNTIL 1/19/2021

System Price: BB-1005 with 15" Pitch Count Panel - Rear Ventilation

System Price

Crating & Shipping
To Gretna, LA via Dedicated Flatbed

Tax:

Grand Total:

To order Sign ID 1433369, sign here and return with down payment

Signature: _____ Date: _____

Buyer acknowledges that prior to executing this Agreement Buyer has read or has had the opportunity and means to review the TERMS OF SALE and Seller's LIMITED WARRANTY, SOFTWARE LICENSE, AND LIMITATION OF LIABILITIES AND REMEDIES at <http://watchfiresigns.com/terms-and-conditions-of-sale> or in the alternative, a hard copy has been provided to Buyer and its receipt is acknowledged.

This quote/offer is expressly limited to the acceptance by the buyer of its exact terms, including the terms of sale and seller's limited warranty, software license, and limitation of liabilities and remedies, all of which are a part of the agreement. Any purchase order or related documents buyer issues to seller (even if it contains terms in addition to or inconsistent with the terms of this agreement) for this transaction shall constitute buyer's unconditional agreement to be bound exclusively by the seller's terms and conditions of this agreement, and buyer hereby agrees that such additional or inconsistent terms shall not apply nor become a part of this agreement.

Scoreboard Color Options

Standard Watchfire fixed digit scoreboards ship with a black cabinet and white lettering. The following colors are available at no extra charge. Please write the desired color on the signed quote when ordering a scoreboard.

CABINET COLORS	PANTONE	C	M	Y	K	R	G	B	HEX/HTML
Black*	Black C	63	62	59	94	45	41	38	2D2926
Maroon	209 C	20	97	40	58	111	38	61	6F263D
Kelly Green	356 C	91	4	100	25	0	122	51	007A33
Royal Blue	300 C	90	50	0	0	0	94	184	005EB8
Forest Green	5477 C	66	24	43	66	62	93	88	3E5D58
Charcoal	N/A	58	51	49	18	106	104	105	6A6869
White	0	0	0	0	0	0	0	0	FFFFFF
Purple	525 C	69	100	4	45	87	44	95	572C5F
Reflex Blue	Reflex Blue C	100	89	0	0	0	20	137	001489
Champion Blue	289 C	100	76	12	70	12	35	64	0C2340
Crimson	194 C	8	100	55	37	155	39	67	9B2743
Red	485 C	0	95	100	0	218	41	28	DA291C

PIPING COLORS	PANTONE	C	M	Y	K	R	G	B	HEX/HTML
White*	0	0	0	0	0	0	0	0	FFFFFF
Black	Black C	63	62	59	94	45	41	38	2D2926
Yellow	108 C	0	5	98	0	254	219	0	FEDB00
Sunflower	123 C	0	19	89	0	255	199	44	FFC72C
Orange	151 C	0	60	100	0	255	130	0	FF8200
Red	485 C	0	95	100	0	218	41	28	DA291C
Cardinal Red	200 C	3	100	70	12	186	12	47	BA0C2F
Maroon	209 C	20	97	40	58	111	38	61	6F263D
Purple	525 C	69	100	4	45	87	44	95	572C5F
Navy	282 C	100	90	13	68	4	30	66	041E42
Royal Blue	300 C	90	50	0	0	0	94	184	005EB8
Deep Green	567 C	88	33	69	72	23	63	53	173F35
Silver	877 C	45	34	34	0	138	141	143	8A8D8F
Gold	872 C	0	25	56	51	133	113	77	85714D
Light Gray	428 C	10	4	4	14	193	198	200	C1C6C8

*Standard options

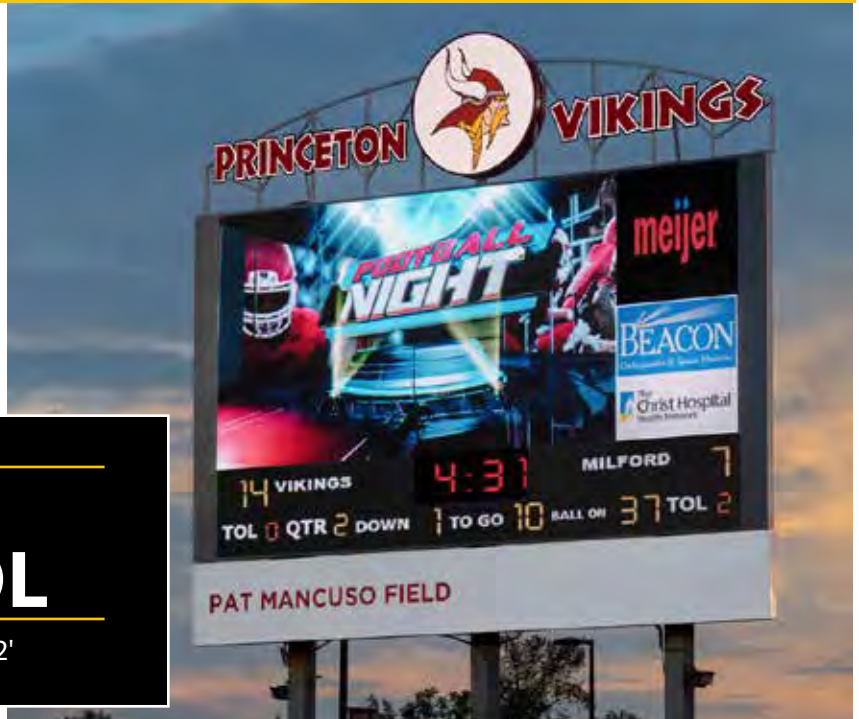
TESTIMONIALS

TESTIMONIAL

WHAT PEOPLE ARE SAYING

PRINCETON HIGH SCHOOL

CINCINNATI, OH • 16mm • 17'4" x 32'



“

“The possibilities are endless for the content we can show on our new Watchfire scoreboard. The full video board allows us to showcase our community partners, advertisers and others, as well as run custom graphics for each sport.” view my sign as future sales. If I had to do it again, I would buy an even bigger sign. The bigger the sign, the bigger the outcome.

”

CHRIS LOCKHART | Director of Technology, Princeton City Schools

CINCINNATI HILLS CHRISTIAN ACADEMY

Cincinnati, OH • 16mm • 7'5" x 20'



CHCA + EAGLES

Eagles

7

TOL 3

2nd and 10

10:52

Qtr 1

Rams

3

TOL 3

Ball on 44

TESTIMONIAL

WHAT PEOPLE ARE SAYING

BASD STADIUM

BETHLEHEM, PA • 16mm • 8' x 16'



“

Students and fans from both Liberty High School and Freedom High School love the new video board. There's a lot of excitement in the schools and in the community about everything we can do with this display.” view my sign as future sales. We've been very happy with our Watchfire sign. **It's important to work with a company that produces great products and supports them after the sale.**

”

FRED HARRIS | Athletic Director, Bethlehem Area School District

ELDER HIGH SCHOOL

Cincinnati, OH • 16mm • 3'5" x 16'3"



TESTIMONIAL

WHAT PEOPLE ARE SAYING



ROCKLIN HIGH SCHOOL

ROCKLIN, CA • 19mm • 9' x 16'

“ WE USED TO RECOGNIZE SPONSORS ON BANNERS IN THE STADIUM. **NOW, OUR SPONSORS GET TERRIFIC EXPOSURE ON THE VIDEO BOARD AT ALL OUR HOME GAMES.** ”

DAVE STEWART | Athletic Director

CASE STUDIES

CASE STUDY

**NAZARETH AREA
HIGH SCHOOL**

NAZARETH, PA

16mm

15'5" x 26'



Nazareth Area High School, located about 20 miles east of Allentown, offers dozens of athletic program opportunities to its student body of more than 1,500 in grades 9 through 12.

Rob Zemanick, the school's Director of Facilities and Operations, raised the idea of installing a digital scoreboard at the school's football field, which also hosts soccer, lacrosse and field hockey games, as well as youth camps, marching band competitions, and other community events. "The idea was to give the school a way to raise revenue and enhance fan engagement, while also providing a learning experience for non-athlete students interested in television and video production," Zemanick said.

Working with FastSigns of Easton, Pa., the original plan was to install a "mini jumbotron" next to its existing scoreboard, but once everyone understood the versatility of the video board, the decision was made to install a large virtual scoreboard that could be used for various sports.

Nazareth Area High School selected Watchfire Signs to manufacture the scoreboard based on how good a demo sign looked, the easy-to-use software that comes with the sign, and the reputation of the company, according to Zemanick.

The professional-quality digital scoreboard was installed in August 2017 just before the first football game, and the impact of the sign has been better than anticipated. "Students and fans love the board. Athletes feel it creates a professional atmosphere, and the sound and graphics generate a lot of excitement during games," said Zemanick.

Non-athletes also are benefiting from the technology. Students interested in video production and reporting quickly started shooting video around town and packaging warm up videos to run on the board. The school recently purchased a wireless video camera, which will allow students to display live crowd shots, conduct sideline interviews, and other real time video. Ultimately, it is the intention of faculty to train students to operate the sign during games. "This kind of experience is terrific for kids applying to college. It gives them a way to showcase their work and set themselves apart from other applicants," said Zemanick.

Finally, the school has raised nearly \$60,000 in ad revenue in just six months. The school hired an advertising representative to sell banner ads on the board as well as static ads on light boxes surrounding the scoreboard. Soon, parents and fans will be able to easily buy and schedule shout-out banners on the board to support athletes.

"Our digital scoreboard provides endless opportunities to engage fans and provide unique learning opportunities for students."

**ROB ZEMANICK | NAZARETH AREA
HIGH SCHOOL**

CASE STUDY

THE VILLAGES HIGH SCHOOL

The Villages, FL

XVS 19mm

11' x 19'



The Villages Charter High School (TVCS) located in The Villages, Florida, is a modern educational facility with state-of-the-art amenities for its students. At a meeting held in early 2015, several administrators brainstormed with architects about ways to modernize the school's athletic stadium. Athletic director Richard Pettus said the group discussed adding a dynamic new video scoreboard. "We thought it would attract more people to our school or even bring us more visibility when we host state-wide events like the all-star game," Pettus said.

Based on their reputation, Dan Hayes and Mid-Florida Signs & Graphics were called in as consultants on the scoreboard project. "(The Villages) knew our work, knew our abilities. We had a meeting with them to discuss the project, and I was not too keen on the video board that they were going to use," said Hayes. "I just felt that they could get better for their money. That's when I recommended Watchfire."

The missing piece for a successful project was an experienced sports market team to pull it all together. Watchfire's sports director and project managers developed a proposal to provide a turn-key package for track timing integration, video production and audio. Watchfire provided a top-of-the-line system that enables TVCS to produce live video, instant replay, sponsor advertisements & commercials as well as promotions, to enhance the fan experience and increase advertising value to sponsors. "Watchfire was a tremendous help in making things happen quickly," said Hayes. "We were not familiar with the cameras, the instant replay, and how to create all the static ads, displays and canned programs."

Content and programming for the video board is done by students in the TVCS media and journalism classes, taught by Megan Licciardello. The curriculum provides experience in producing a live broadcast and is popular with students. Students work individually on all aspects of the broadcast and as a team during sporting events. "Out there, they have to communicate with each other. It gives them a sense of what it's like to work with other people," said Licciardello. "They see the pressures that come with live production. If you mess up, you have to keep going."

The video board has added an element of excitement to home sporting events. Crowd spirit and participation have been elevated, and the players enjoy seeing their success on the big screen. As Licciardello points out, "Pretty much everyone here is excited about it. It takes the whole atmosphere up a notch."

"We've sold a variety of LED signs in the past, but once we got smart, we go with Watchfire all the time. Their on-site demos are a great sales tool and prove that their products are engineered better and more reliable than the competition."

**DAN HAYES | OWNER
MID-FLORIDA SIGNS & GRAPHICS**

CASE STUDY

East-West Stadium

FAIRMONT, WV

19mm

10' x 18'



East-West Stadium in the Marion County School District was constructed in the 1930s as a New Deal WPA project. It has been the site of almost 200 events a year for Marion County schools and needed to be updated to accommodate more spectators. School leaders agreed that renovations should include a modern scoreboard.

Since J.D. Signs built the previous scoreboard, the first point of contact was their general manager, Bob DeRiggi. He recommended adding a 10' x 18' Watchfire 19mm video board because of its image quality, reliability and 5-year warranty. The Watchfire on-site demo convinced school officials that sports fans could enjoy amazing graphics from any seat in the stadium.

Though East-West Stadium is the home field for two rival high schools, the community easily came together to fund the sign. The stadium renovation fundraising group approached local businesses for pledges, offering video ads on the scoreboard and static tile ads in exchange for financial support. The response was overwhelming.

Soon after the LED display was purchased and installed, Marion County made managing the sign part of the high school's media production curriculum. Students and teachers learned to create artwork, schedule messages and update the sign with Watchfire's Ignite software. They also learned how to use video production equipment that was integrated into the board.

The new digital display premiered at the biggest football game of the season. Live video of the game, instant replays, player and cheerleader introductions, animations from Watchfire's EasyArt library and video ads from supporters made the big game even more special.

The digital board increased student interest in media production and attendance at the game and raised more donations for the stadium fund. "The Watchfire display and scoreboard has infused the community with excitement," said Fairmont's senior principal, Chad Norman. His sentiments were echoed by Frank Moore, Marion County athletic director, who is convinced the scoreboard will help serve the community for years to come.

"When we saw the product demo and the clarity of the picture, we knew we had a unique opportunity to purchase something great. For us, seeing was believing!"

ANDY NEPTUNE
CHAIR OF THE SCOREBOARD COMMITTEE
MARION COUNTY SCHOOL DISTRICT



We're ready to partner with you and add new excitement to your venue.
Watchfire Signs | Danville, Illinois, USA