



M100L72 - THE BULK WASTE CRANE SOLUTION

PALFINGER

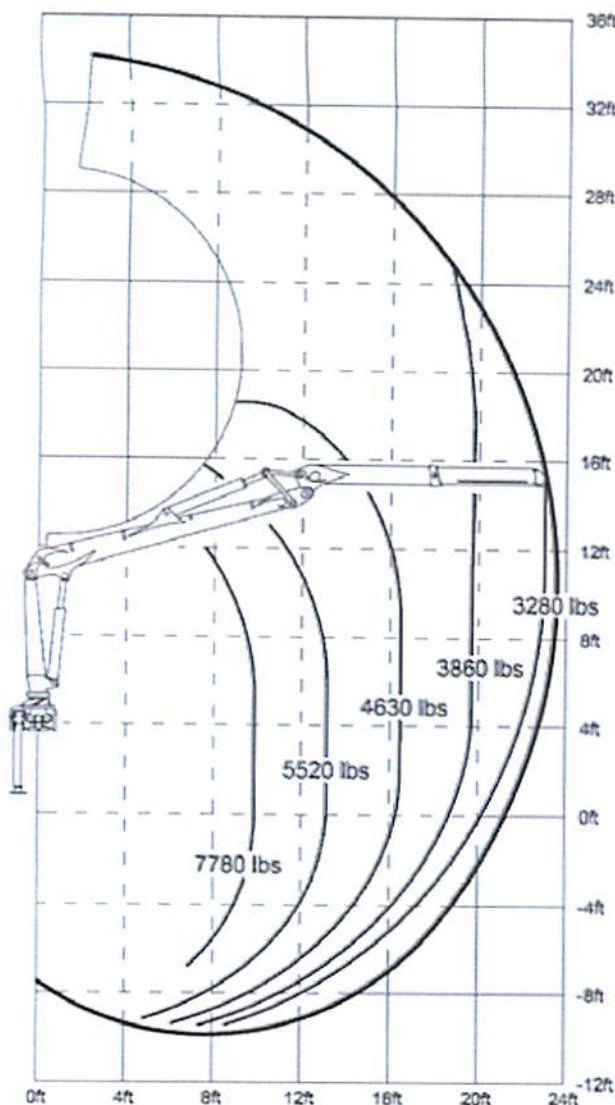
LIFETIME EXCELLENCE

The superior engineering of PALFINGER delivers the most effective combination of power, performance, speed, and quality. The M100L72 features a long main boom designed for maximum protection with a top mounted cylinder. The main lift cylinder is protected by a heavy-duty steel guard, and the EPScope extension system provides unmatched protection with internal components that are serviceable without dismantling the boom. Every hose, pipe and cylinder on the M100L72 are either internally routed or protect from the elements. The double rack slewing system provides an industry leading net slewing torque, and the linkage system gives the operator up to 60% more lifting power creating constant main boom speed and power throughout the lift.

WWW.PALFINGER.COM

M100L72 THE PERFECT COMBINATION OF POWER, SPEED AND PRECISION

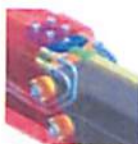
M100L72 BULK WASTE CRANE



TECHNICAL SPECIFICATIONS

Max. lifting moment	73,760 ft.lbs
Capacity and reach	7,780 lbs. @ 10'
	5,100 lbs. @ 15'
	3,860 lbs. @ 20'
Maximum reach	23' - 6"
Rotation	425°
Rotation speed	8.2 RPM
Net slewing torque	17,700 ft.lbs
Uninstalled weight (without attachment)	4,010 lbs.

EPSILON - FEATURES AND BENEFITS



EPSCOPE - Extension components are located inside the boom for maximum protection. Service maintenance is facilitated by two protective covers that provide access to exchange hoses, pipes, and cylinder; no need to dismantle boom.



EPSLINK - Provides maximum protection and maneuverability through internal hose routing. No more hoses hanging around the link/rotator vulnerable to breakage from timber/scrap or from being stowed on the load.



POWERFUL SLEWING - 17,700 ft.lbs. of net slewing torque derived via a solid double rack slewing system running in an oil bath with a self-aligning roller bearing. End of stroke damping for precision control, smooth operation and increased life of components.



LINKAGE SYSTEM - Provides up to 60% more lifting power in the upper working area creating constant main boom speed and power throughout the lift.

