

 doc10127820170124075023

1/24/2017 7:55 AM

Adobe Acrobat D...

1,311 KB

DATE: 1/19/2017

INVITATION TO BID
THIS IS NOT AN ORDER

Page: 4

BID NO.: 50-00118754

JEFFERSON PARISH
PURCHASING DEPARTMENT
P.O. BOX 9
GRETN, LA. 70054-0009
504-364-2678

VENDOR:

BUYER: DREAMEY

As per LSA-RS 47:301 et seq., all governmental bodies are excluded from payment of sales taxes to any Louisiana taxing body. Quotations shall be based on F.O.B. Agency warehouse or jobsite, anywhere within the Parish as designated by the Purchasing Department.

JEFFERSON PARISH reserves the right to cancel all or any part of an order if not shipped promptly. No charges will be allowed for parking or cartage unless specified in quotation. The order must not be filled at a higher price than quoted. JEFFERSON PARISH reserves the right to cancel at any time and for any reason by issuing a THIRTY (30) day written notice to the contractor.

JEFFERSON PARISH is expecting all products to be new and all work is to be done in a workman-like manner, according to standard practices. Any deviations or alterations from the specifications must be indicated and backup documentation supplied with your quotation.

DELIVERY: FOB JEFFERSON PARISH

INDICATE DELIVERY DATE ON EQUIPMENT AND SUPPLIES

45 days

INDICATE STARTING TIME (IN DAYS) FOR CONSTRUCTION WORK

INDICATE COMPLETION TIME (IN DAYS) FOR CONSTRUCTION WORK

In the event that addenda are issued with this bid, bidders MUST acknowledge all addenda on the bid form. Bidder must acknowledge receipt of an addendum on the bid form as indicated. Failure to acknowledge any addendum on the bid form will result in bid rejection.

Acknowledge Receipt of Addenda: NUMBER: _____
NUMBER: _____
NUMBER: _____
NUMBER: _____

LOUISIANA CONTRACTOR'S LICENSE NO.: (if applicable) _____

*** ALL BIDDERS MUST COMPLETE SECTION BELOW ***	
FIRM NAME: <u>Temple Inc</u>	
SIGNATURE: (Must be signed here) <u>Wes Prater</u>	TITLE: <u>Sales Support</u>
PRINT OR TYPE NAME: <u>Wes Prater</u>	
ADDRESS: <u>305 Bank St. SE</u>	
CITY, STATE: <u>Decatur, AL</u>	ZIP: <u>35601</u>
TELEPHONE: <u>(256) 353-3820</u>	FAX: <u>(256) 353-4578</u>
EMAIL ADDRESS: <u>Wes.prater@temple-inc.com</u>	

TOTAL PRICE OF ALL BID ITEMS: \$ 10,040.00

DATE: 1/19/2017

INVITATION TO BID FROM JEFFERSON PARISH - continued

Page: 5

BID NO.: 50-00118754

SEALED BID

ITEM NUMBER	QUANTITY	U/M	DESCRIPTION OF ARTICLES	UNIT PRICE QUOTED	TOTALS
1	2.00	EA	ONE TIME PURCHASE: 0001 SOLAR POWERED SCHOOL ZONE FLASHING BEACONS CARMANAH R829G DUAL SOLAR SCHOOL ZONE BEACON ASSEMBLY OR APPROVED EQUAL THE ASSEMBLY MOUNTED TO THE 4-1/2" O.D. PEDESTAL POST WILL REQUIRE ONE (1) MEDIUM DUTY FOUNDATION ANCHOR ASSEMBLY PELCO PART NO. PB-5372-GLV OR APPROVED EQUAL THE BEACONS WILL BE INSTALLED BY THE TRAFFIC ENGINEERING DIVISION PLEASE NOTE IN THE SPECIFICATIONS THE 2 DIFFERENT MOUNTING REQUIREMENTS SPECIFICATIONS ATTACHED	\$5,020 ⁰⁰	\$10,040 ⁰⁰



carmanah®
we put solar to work

R829-G

SOLAR LED SCHOOL ZONE FLASHING BEACON

Schedule Based Solar Flashing Beacon for School Zones

- ITE Intensity Compliant solar system
- Supports time switch programming
- Solar panel and battery sized to meet location demands
- Proven technology platform
- MUTCD Compliant

Improves Safety

The R829-G meets ITE intensity requirements for flashing beacons. Research shows flashing beacons decrease vehicle speeds by five to seven miles per hour in school zones and improve driver awareness by increasing sign visibility.

Time Switch Ready

Compatible with Applied Information AI-500-070 or RTC AP-22 time switch with optional M2M cellular modem.

Advanced User-Interface

The R829-G features an on-board user interface and display that provides quick configuration and status monitoring.

Reliable

Designed with Carmanah's industry leading solar modeling tools to provide dependable year-after-year operation. The purpose-built, energy management system (EMS) ensures reliable operation, even during cloudy conditions. The R829-G is custom configured for optimum performance based on location, solar insolation and application requirements and is designed to withstand vandalism and extreme weather.

Cost-effective Solution

Solar eliminates the costs of trenching, wiring and grid power connections. Quick installation minimizes traffic disruptions. Low maintenance for reduced servicing cycles and zero operational costs.

Trusted

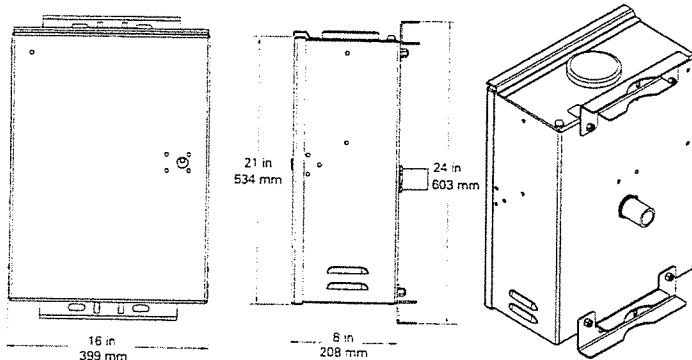
With thousands of installations in the field, Carmanah solar beacons and solar LED lights have become the benchmark in traffic applications worldwide.



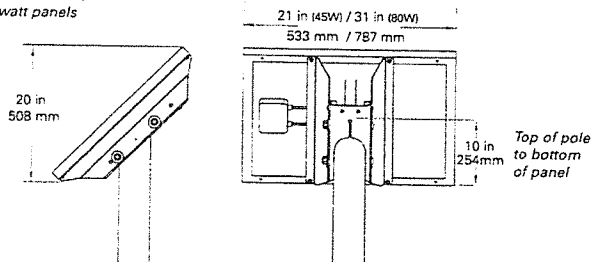
REPRESENTED IN YOUR REGION BY:

R829-G

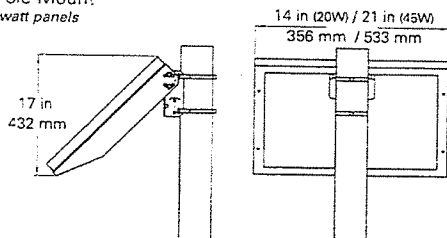
SOLAR LED SCHOOL ZONE FLASHING BEACON



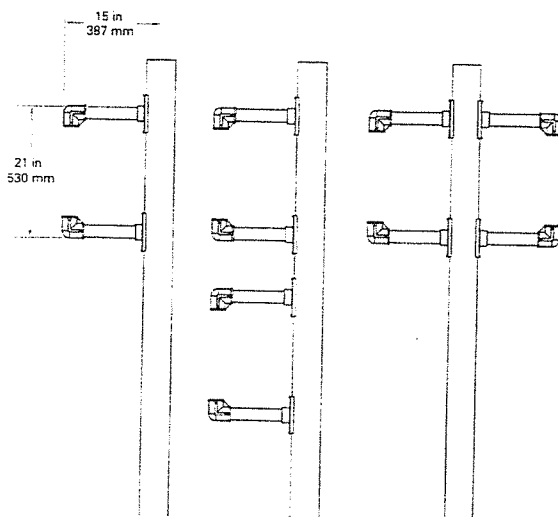
Top of Pole Mount
45 and 80 watt panels



Side of Pole Mount
20 and 45 watt panels



Single Dual Vertical Dual Horizontal



On-Board User Interface (OBU)	Adjustable, auto-scrolling LED display
	Night dimming configuration
	System test, status and fault detection
Optical	MUTCD Compliant*; alternate and unison flash pattern
	ITE VTCSH** LED circular signal supplement standard including intensity
	Single or dual 12 in (305 mm) or 8 in (203 mm) diameter LED module, yellow
	Dominant wavelength: 590 nm (yellow)
Energy Collection	High-efficiency photovoltaic module: 20, 45 or 80 watts
	Maximum power point tracking with temperature compensation (MPPT-TC) for optimal energy collection in all solar conditions
Energy Storage	Replaceable, recyclable best in-class 12V battery system; Sealed, maintenance-free
	Battery sizes: 35, 75, 110 Ah
	Designed for minimum 5 year battery life
Cabinet Construction	Weatherproof, vented cabinet for ambient air transfer (NEMA 3R)
	Hinged door with industry standard # 2 lock
	Side pole mounting to standard 4.5 in (114 mm) poles
	Color: black or natural finish
Programming	Pre-wired assembly designed to minimize installation time
	Compatible with third party time switches:
	• Applied Information AI-500-070
Environmental	• RTC AP-22 with optional M2M cellular modem
	Operating temperature (excluding battery): -40 to 176°F (-40 to 80°C)
	Battery temperature: -4 to 122°F (-20 to 50°C) extended temperature battery optional
Warranty	3-year limited warranty

* Meets all requirements for design, illumination, and color of signal sections required by 2009 MUTCD, Chapter 4L, Flashing Beacons (MUTCD, Manual on Uniform Traffic Control Devices).

**Meets ITE Intensity when configured and applied as recommended.



The management system governing the manufacture of this product is ISO 9001:2008 certified.



NATIONAL
COMPLETE STREETS
COALITION



Specifications subject to local environmental conditions.

Specifications may be subject to change.

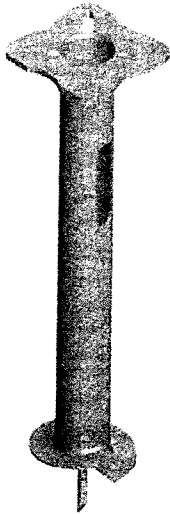
US Patent No 6,573,659. Other patents pending.

"Carmanah" and Carmanah logo are trademarks of Carmanah Technologies Corp.

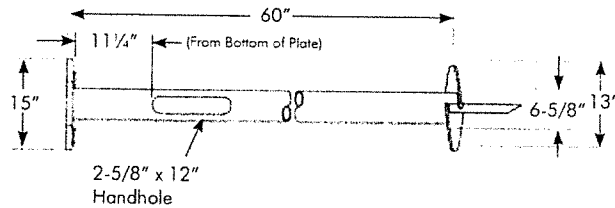
© 2015, Carmanah Technologies Corp.

Document: SPC_TRAF_R829G_RevA

Medium Foundation Anchor Assy, 6" Sch 40 x 5'-0" 10" to 15" Bolt Circle, 1"-8NC Hardware

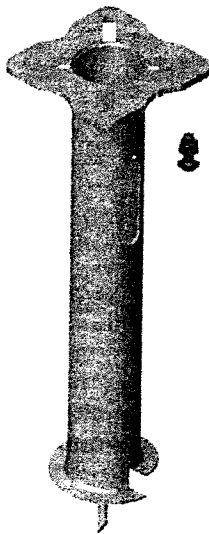


PB-5372-GLV

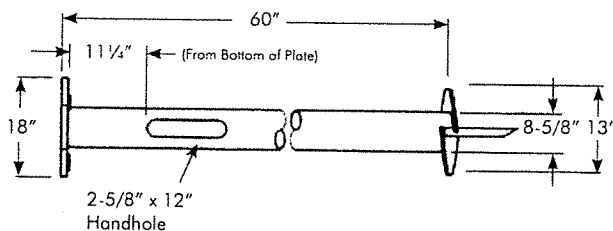


Pelco's foundation anchors feature a top plate which enables the bolt head to be inserted after the anchor is in place. This eliminates the necessity of digging under the plate to install base bolts. Plate scrapers loosen the soil for easy bolt installation from top of the plate. The square head bolts are held in place by the plate scrapers, which prevent them from turning.
For residential lights, parking lots, and street lights. Typically for poles ranging from 20'-30' in height (wt. 167 lbs)

Heavy Duty Foundation Anchor Assy, 8" Sch 40 x 5'-0" 13" to 18" Bolt Circle, 1-1/4"-7NC Hardware



PB-5375-GLV



Pelco's foundation anchors feature a top plate which enables the bolt head to be inserted after the anchor is in place. This eliminates the necessity of digging under the plate to install base bolts. Plate scrapers loosen the soil for easy bolt installation from top of the plate. The square head bolts are held in place by the plate scrapers, which prevent them from turning.
For street and highway lighting. Typically for poles ranging from 30'-40' in height (wt. 239 lbs)

- Note: 1. Foundation anchors are hot dip galvanized per ASTM A123.
2. All assemblies are supplied with Grade 5 Galvanized Bolts.
3. All assemblies with hardware are bagged in a nylon weatherproof bag.