

Figures 230-DS, 230-US Lever & Spring Swing Check Valve

Description

VAG/GA Industries Figures 230-DS and 230-US are heavy duty, customizable swing check valve that utilize an adjustable spring assisted closure to minimize slam and hammer. The valves are typically installed on the discharge of a pump to prevent backflow when the pump is off line. It opens smoothly at pump start and closes quickly and quietly upon pump shutdown.

Figure 230-DS and 230-US meet the design, materials of construction and testing required by AWWA C508 and is suitable for use with water or sewage, in horizontal or vertical flow, up pipes.

Product Features

- Heavy duty construction withstands rigors of pump station operation
- Full flow area when swung only 25° away from seat for low head loss and reduced pumping cost
- Replaceable rubber disc set for tight seating at low and high pressure
- Lever & spring field convertible right hand to left hand side, and from horizontal to vertical installation

Standard Materials

- Body & Disc Cast Iron, ASTM A126 Class B
- Cover Steel, ASTM A36
- Body Seat Stainless Steel, Type 316
- Disc Seat Buna-N
- Hinge Shaft Stainless Steel, Type 303
- External Fasteners Steel, A193, Zinc Plated
- Spring Steel

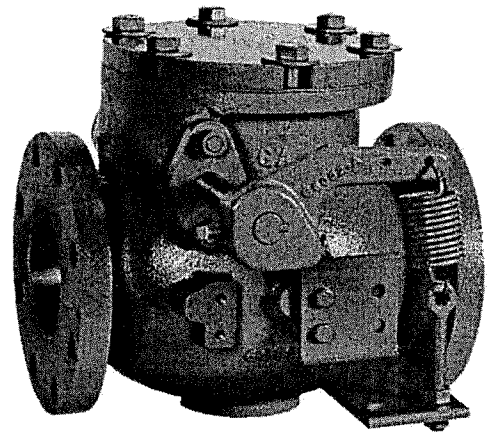
Corrosion Protection

- Standard: Uncoated Internal, Enamel Primer External

See Option P2 and P3 for upgraded corrosion protection package

| Non-Shock Working Water Pressure at up to 15F (66C) | | |
|--|---------------------|----------------------|
| Figure No. | 230-DS | 230-US |
| Flange | ANSI B16.1 Class 25 | ANSI B16.1 Class 250 |
| Size | 3" – 12" | 3" – 12" |
| Max Working Pressure | 200 PSI | 300 PSI |
| Shell Test | 400 PSI | 450 PSI |

Data Sheet 230.01B



Approvals & Certifications

- NSF-61 Certified for Contact with Drinking Water
- NSF-372 Certified Lead Free (Max 0.25% Lead Content by Weighted Average)

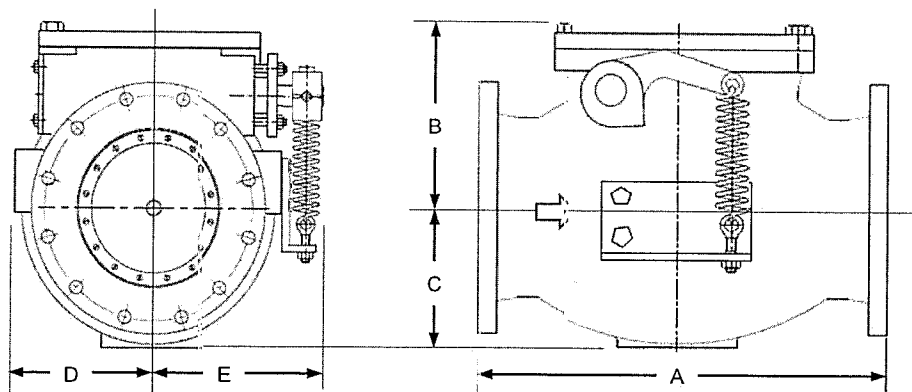
Options

- Option P2: Minimum 6 mil Internal and External 2-Part NSF-61 Carboline 891 Epoxy and 316 SS External Fasteners
- Option P3: Minimum 6 mil Internal and External 2-Part NSF-61 Carboline 891 Epoxy, 316 SS Hinge Shaft and External Fasteners
- Option 1D: With Honeywell HDLS NEMA 1, 3, 4, 4X, 6, 6P, 12 & 13 DPDT Limit Switch
- Option LH: With Lever & Weight Factory Installed on Left Side Facing Inlet

Ordering Data

- Figure Number (230-DS or 230-US)
- Size
- Options and/or Accessories

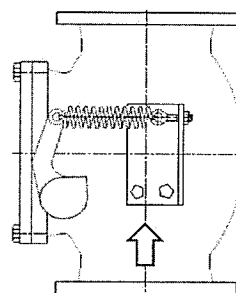
Data Sheet 230.01B



Installation Dimensions

| | 3" | 4" | 6" | 8" | 10" | 12" |
|-----|-----|-----|-----|-----|-----|-----|
| A | 12 | 13 | 17½ | 18 | 23 | 28 |
| B | 7 | 8½ | 9 | 12 | 14 | 16 |
| C | 5 | 5 | 6 | 9 | 9 | 11 |
| D | 10 | 11 | 12 | 14 | 15 | 17 |
| E | 5 | 5 | 7 | 8 | 9 | 11 |
| WGT | 100 | 150 | 230 | 310 | 480 | 970 |

VERTICAL INSTALLATION



- Face to face same for both Class 125 and Class 250 flanged valves, Class 250 supplied with flat face
- Dimensions in inches, weight in pounds and are approximate. Request certified drawings if critical.
- Larger sizes available, consult factory

Full Open Head Loss

