

**Terrebonne Parish Sheriff's Office**

*Jerry J. Larpenter, Sheriff*

P.O. Drawer 1670  
Houma, LA 70361  
Phone: (985) 876-2500  
Fax: (985) 857-0274

**Bid price sheet**

**COMPANY:** A.P.E., Inc.

**ADDRESS:** 9015 Airline Hwy-New Orleans, LA 70118

**PHONE #:** (504) 482-6390 **FAX** (504) 482-6398

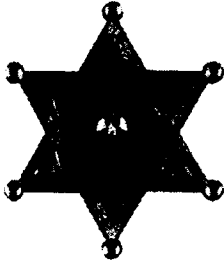
**CONTACT PERSON(S):** Charles A Hewlett charlie@apeinc.us

**CLASS "A" UNIFORMS**

<b>MEN'S TROUSERS</b>	<b>PRICE:</b> <u>\$ 52.95</u>	<u>Exact as Specified</u>
<b>FEMALE'S TROUSERS</b>	<b>PRICE:</b> <u>\$ 52.95</u>	<u>Exact as Specified</u>
<b>MEN'S SHORT SLEEVE SHIRT</b>	<b>PRICE:</b> <u>\$ 52.95</u>	<u>Exact as Specified</u>
<b>FEMALE SHORT SLEEVE SHIRT</b>	<b>PRICE:</b> <u>\$ 52.95</u>	<u>Exact as Specified</u>
<b>MALE LONG SLEEVE SHIRT</b>	<b>PRICE:</b> <u>\$ 54.95</u>	<u>Exact as Specified</u>
<b>FEMALE LONG SLEEVE SHIRT</b>	<b>PRICE:</b> <u>\$ 54.95</u>	<u>Exact as Specified</u>
<b>WINTER JACKET</b>	<b>PRICE:</b> <u>\$ 125.95</u>	<u>to 1X, 2X \$135.95, 3X \$145.95</u>

**COMMENTS:** Bidding all products exact as specified

\_\_\_\_\_  
\_\_\_\_\_  
\_\_\_\_\_



**Terrebonne Parish Sheriff's Office**

*Jerry J. Larpenter, Sheriff*

P.O. Drawer 1670  
Houma, LA 70361  
Phone: (985) 876-2500  
Fax: (985) 857-0274

**Bid price sheet**

**COMPANY:** A.P.E., Inc.

**ADDRESS:** 9015 Airline Hwy-New Orleans, LA 70118

**PHONE #:** (504) 482-6390      **FAX** (504) 482-6398

**CONTACT PERSON(S):** Charles A Hewlett charlie@apeinc.us

**TACTICAL PANTS**

**KHAKI TACTICAL PANTS – PROPPER STYLE #F5220 OR TROUSERS EQUIVALENT  
TO PROPPER**      **PRICE:** \$ 39.95

**LARGER SIZES IF DIFFERENT**      **PRICE:** \$ 39.95

**TACTICAL POLO SHIRT**

**NAVY TACTICAL POLO SHIRT**

**PRICE MUST INCLUDE OUR BADGE EMBROIDERED ON LEFT CHEST**

**CORNERSTONE SELECT SNAG PROOF TACTICAL POLO SHIRT (OR EQUIVALENT TO  
CORNERSTONE)**

**COLOR: DARK NAVY**

**STYLE: CS410 Cornerstone CS410 EXACT AS SPEC**      **PRICE:** XS to XL \$29.50

**LARGER SIZES IF DIFFERENT**      **PRICE:** 2X-\$30.50, 3X-\$32.50, 4X-\$34.50

**NOTE: YOU MAY BID ON ONE ITEM OR BOTH ITEMS. IF YOU CANNOT SUPPLY  
EMBROIDERED POLO SHIRTS YOU MAY BID ON TACTICAL PANTS ONLY, IF YOU  
CANNOT SUPPLY TACTICAL PANTS YOU MAY BID ON POLO SHIRTS ONLY.**

**HORACE SMALL®, SENTRY PLUS SPECIFICATION, Female Function Fit™ Trousers  
HS2481**

**FABRIC**

A VISA® fabric from Milliken & Company for fabrics, Style 7470, 100% polyester. Two ply warp and filling, 10.5 - 11 oz. per linear yard, 7.0 oz. per square yard, 2 x 1, gabardine weave. SolarBan Technology Fabric  
Color: Dark Navy -- 7470-2083 (HS2481)

**DESIGN**

Shall be made on a modified ladies uniform pattern with quarter top front pockets and two back pockets. Lowered rise front with modest rise back allows comfortable fit while in the patrol car or on foot pursuit. Positioning the duty belt at the natural waist gives support and comfort. Comfort stretch waistband enables custom fit to many different body types allowing wearer to adjust waist band up and down the torso for comfort. Comfort stretch also eliminates unsightly gaping at the back. Generous fit through hips, seat and thigh increases comfort and mobility. Stretching up to 2" - 4", the Horace Small Comfort Cool Flex® Waistband.

**POCKETS**

The front pocket opening will be a minimum 6" and be 5 1/4" deep from the bottom of the opening. They shall be stitched, turned, and restitched. The inside front pocket facing shall be a separate piece of self material finishing no less than 1 1/4" wide. The back pockets will have a minimum opening of 5 1/4" and be 6" deep on size 14 and up. On size 12 and down, the minimum opening will be 6" wide and 6" deep. They shall be made with a Reese PW automatic machine and finished on the outside with an exposed top and bottom cord. The left pocket shall have a tab to button. The front pockets will have straight bar tacks. The back pockets shall be bar tacked with a triangular bar tacking machine.

**POCKETING**

All pocketing shall be black, 70% polyester/30% cotton. The weight shall be 3.2 yds/lb.

**WAISTBAND**

The waistband is to finish 2" wide and will be closed with two crush-proof hooks and eyes, the eyes being bar tacked for stability. The band is attached to a 2 1/4" Cool Flex® curtain with two silicone beads along the full length of the band as well as Ban-Rol Sofflex™ elastic, 1/4" wide. The waistband is to be set on and stitched below the lower edge through the outer fabric and the waistband curtain. The Comfort Cool Flex® band allows stretch of 2" - 4" depending on the size of the trouser. The trousers are to be made with a continuous closed waistband having center back outlet for tailoring.

**INSIDE TRIM**

The right fly shall be the same fabric and color as the waistband curtain. The right fly lining shall be sewn to the left fly below the zipper.

#### **BELT LOOPS**

There shall be a minimum of five (5) belt loops on waist sizes 12 and down, and a minimum of seven (7) on all sizes over 14. Each loop is to be  $\frac{1}{2}$ " wide, interlined, of double thickness, and stitched on the face side with a two needle machine. All loops will be sewn into the bottom of the waistband and into the rocap except for the center back loop, which shall be tacked on. They shall accommodate a 1-5/8" belt.

#### **ZIPPER**

The trousers shall be closed with a YKK brass zipper which has a brass bottom stop at the base of the zipper chain and a brass ratcheting cam lock slider. The inside left fly will be reinforced with Pellon under the zipper stitching. A straight bar tack shall be sewn through from the outside of the garment to the inside at the bottom of the fly. It shall be sewn through the zipper tape, the right and left fly and the right fly lining. The right and left fly shall be joined by an additional bar tack located below the bottom zipper stop on the inside of the trouser.

#### **STRIPE**

There shall be a 1" Yellow gold 100% polyester # 86772 stripe sewn on each leg starting at the bottom of the waistband extending down centered on the seam to the hem.

#### **SEAMING**

The entire trouser is to be seamed with polyester core thread. The seat seam shall be stitched with a tandem needle seat seaming machine. All exposed inside seams of the trouser are to be serged. The inseam and outseam shall be sewn with a 401 chain stitch and seam busted open as traditional tailoring method allowing pants to drape smoothly with no puckers or pulls.

#### **LABELING**

Trousers shall be labeled with the following information: style number, size, fiber content, care instructions and country of origin.

#### **FINISHING AND PRESSING**

All loose threads shall be removed. Trousers must be pressed completely and properly with the side seam, inseam, and seat seam pressed open.

#### **WARRANTY**

One year against workmanship or fabric defects.

**HORACE SMALL®, SENTRY PLUS SPECIFICATION-Men's Short Sleeve Shirt-Zipper Front  
HS1231-French Blue Heather**

**FABRIC**

Solid: A VISA® fabric from Milliken & Company for fabrics, Style #7430, 100% polyester, texturized woven. Weight 7.25 oz. per yard. Single warp, two ply filling.  
Heather: 100% polyester, texturized woven. Weight 8-8.5 oz. per yard. Two ply warp and filling.

**CREASING**

There are two sewn in permanent military creases in front and three in back.

**FRONT**

The left front has a self-fabric center pleat 1-3/8" wide extending from collar band to bottom of shirt. It has two rows of stitching 7/8" apart. The center pleat is interlined with 100% polyester, 250 denier. Right front has a 3-1/8" reverse facing extending from neckline to bottom of shirt. There are seven front buttons.

**ZIPPER CLOSURE**

Shirt have a 14" nylon separating zipper closure.

**COLLAR**

Convertible collar measures 2-7/8" long at points and is topstitched 3/16" from the edge. The interlinings are 100% polyester, 250 denier. Permanent collar stays of proper length are fused or sewn inside collar so that no stitches are made through the bottom leaf.

**YOKE**

Two piece yoke of self-goods. The back of the yoke is topstitched 1/16".

**SLEEVES**

Sleeves are one piece, have a 7/8" hem and finish 10-3/8" long from the shoulder seam on a size Large. Sleeve setting and closing are sewn with an overedge and safety stitch. The sleeve is bartacked at the hem.

**POCKETS**

Piggyback Pocket Flaps - Pocket flaps shall be Horace Small # EF0020 made in a piggyback construction with the bottom portion extending approximately 1/8" larger on all sides producing a two toned pocket flap. The bottom fabric shall be Yellow gold 100% polyester # 86772 and the top fabric shall be French blue 100% polyester color # 82864. Flaps are scalloped, finishing 53/8" in width, 2 1/4" in length at the center and 2 1/2" at each side. Flaps are placed with a 1/4" space between the pocket and flap and have one centered buttonhole with button. The left flap has a pencil opening 1-3/8" wide. Woven loop fastener 1/2" wide and 1" long is placed on edges of each flap to secure woven hook fastener placed on pockets. Flaps have crease interlining, 24 ligne metal "S" button shall be attached

**EPAULETS**

Piggyback Epaulets - Epaulets shall be Horace Small # EE0173 made in a piggyback construction with the bottom portion extending approximately 1/8" larger on all sides producing a two toned epaulet. The bottom fabric shall be Yellow gold 100% polyester # 86772 and the top fabric shall be French blue 100% polyester color # 82864. Sewn into sleeve head seam and measure approximately 1-7/8" tapering to 1 1/2" with end pointed. Epaulets are set approximately 1" from the collar seam. They are box-stitched to shoulders with a row of x-stitching 2 1/2" from sleeve head and diagonally sewn from each end of the seam to the sleeve. Epaulets have crease interlining. Epaulets are tacked to the shoulder at the point for a 24 ligne metal "S" metal button

#### EMBLEMS

There shall be a department supplied arm emblem sewn on each sleeve 1" from shoulder seam and centered.

#### BADGE TAB

Inside sling type of self-goods approximately 1-1/8" wide extends from joining seam to pocket of left front. To have two small, uncut buttonholes 1 1/4" apart with the lower buttonhole 1 1/4" above the flap.

#### EPAULETS

Piggyback Epaulets - Epaulets shall be Horace Small # EE0173 made in a piggyback construction with the bottom portion extending approximately 1/8" larger on all sides producing a two toned epaulet. The bottom fabric shall be Yellow gold 100% polyester # 86772 and the top fabric shall be French blue 100% polyester color # 82684. Sewn into sleeve head seam and measure approximately 1-7/8" tapering to 1 1/4" with end pointed. Epaulets are set approximately 1" from the collar seam. They are box-stitched to shoulders with a row of x-stitching 2 1/4" from sleeve head and diagonally sewn from each end of the seam to the sleeve. Epaulets have crease interlining. Epaulets are tacked to the shoulder at the point for a 24 ligne metal "S" metal button

#### SHIRT LABELING

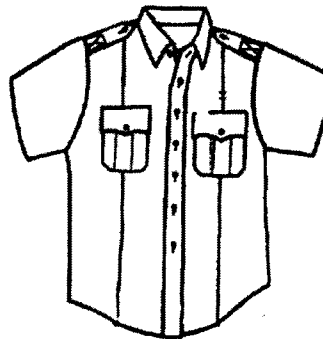
Each garment is identified by permanent size, style number, cut number, fiber content, manufacturing RN number, care instructions and country of origin labeling.

#### BUTTONS

20-ligne melamine buttons dyed to match the fabric color.

#### PACKING

Shirts are polybagged individually.



**HORACE SMALL®, SENTRY PLUS SPECIFICATIONS, Female Short Sleeve Shirt, Zipper Front,  
HS1286-French Blue Heather**

**FABRIC**

Solid: A VISA® fabric from Milliken and Company for fabrics, Style #7430, 100% polyester, texturized woven. Weight 7.25 oz. per yard. Single warp, two ply filling.  
Heather: 100% polyester, texturized woven. Weight 8-8.5 oz. per yard. Two ply warp and filling.

**CREASING**

Pocket flaps and epaulets are die creased to give uniform shape and size. There are two sewn in permanent military creases in front and three in back.

**FRONT**

The right front has a self-fabric center pleat 1-3/8" wide with a 2 1/2" turn back extending from neckline to bottom of shirt. It has two rows of stitching 7/8" apart. The center pleat is interlined with 100% polyester, 280 denier. The right front has seven buttonholes 1/2" from edge, 3" apart. The left front has an approximate 2 1/2" turn back extending from collar to bottom of shirt. Buttons correspond to each buttonhole. The right front buttons over the left front.

**ZIPPER CLOSURE**

Shall have a 14" nylon separating zipper closure.

**COLLAR**

Die cut. Convertible collar measures 2-7/8" in length at points and is top stitched 3/16" from the edge. The interlinings are 100% polyester, 280 denier. Permanent collar stays of proper length are fused or sewn inside the collar so that no stitches are made through the bottom leaf.

**YOKE**

Two piece yoke of self-goods. The back of the yoke is topstitched 1/16".

**SLEEVES**

Sleeves are one piece, have a 7/8" hem and finish approximately 8" long from the shoulder seam on a size Medium. Sleeve setting and closing are sewn with an overedge and safety stitch. The sleeves are bartacked at the hem.

**POCKETS**

Piggyback Pocket Flaps - Pocket flaps shall be Horace Small # EF0020 made in a piggyback construction with the bottom portion extending approximately 1/8" larger on all sides producing a two toned pocket flap. The bottom fabric shall be Yellow gold 100% polyester # 86772 and the top fabric shall be French blue 100% polyester color # 82584. Flaps are scalloped, finishing 53/8" in width, 2 1/2" in length at the center and 2 1/2" at each side. Flaps are placed with a 1/4" space between the pocket and flap and have one centered buttonhole with button. The left flap has a pencil opening 1-3/8" wide. Woven loop fastener 1/2" wide and 1" long is placed on edges of each flap to secure woven hook fastener placed on pockets. Flaps have crease interlining, 24 ligne metal "S" button shall be attached.

**Terrebonne Parish Sheriff's Office-Female-Short Sleeve Shirt**  
**Page 2 of 2**

**EPAULETS**

Piggyback Epaulets - Epaulets shall be Horace Small # EE0173 made in a piggyback construction with the bottom portion extending approximately 1/8" larger on all sides producing a two toned epaulet. The bottom fabric shall be Yellow gold 100% polyester # 86772 and the top fabric shall be French blue 100% polyester color # 82864. Sewn into sleeve head seam and measure approximately 1-7/8" tapering to 1 1/4" with end pointed. Epaulets are set approximately 1" from the collar seam. They are box-stitched to shoulders with a row of x-stitching 2 1/4" from sleeve head and diagonally sewn from each end of the seam to the sleeve. Epaulets have crease interlining. Epaulets are tacked to the shoulder at the point for a 24 ligne metal "5" metal button

**EMBLEMS**

There shall be a department supplied arm emblem sewn on each sleeve 1" from shoulder seam and centered.

**BADGE TAB**

Inside sling type of self-goods approximately 1" wide extends from joining seam to pocket of left front. To have two small uncut buttonholes 1 1/4" apart with the lower buttonhole 1 1/4" above the flap.

**SHIRT LABELING**

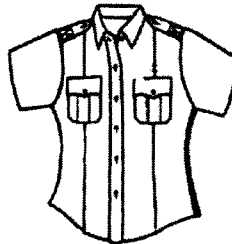
Each garment is identified by permanent size, style number, cut number, fiber content, manufacturing WPL number, care instructions and country of origin labeling.

**BUTTONS**

20-ligne melamine buttons dyed to match the fabric color.

**PACKING**

Shirts are polybagged individually.





**HORACE SMALL®, SENTRY PLUS SPECIFICATION, Male Long Sleeve Shirt, Zipper Front-  
HS1133-French Blue Heather**

**FABRIC**

**Solid:** A VISA® fabric from Milliken and Company for fabrics, Style #7430, 100% polyester, texturized woven. Weight 7.25 oz. per yard. single warp, two ply filling.  
**Heather:** 100% polyester, texturized woven. Weight 8-8.5 oz. per yard. Two ply warp and filling.

**CREASING**

There are two sewn in permanent military creases in front and three in back.

**FRONT**

The left front has a self-fabric center pleat 1-3/8" wide extending from collar band to bottom of shirt. The center pleat has two rows of stitching 7/8" apart and is interlined with 100% polyester, 250 denier. A self-lined button stand 7/8" wide is on the right side and extends from collar band to bottom of shirt. There are six front buttons and one collar button.

**ZIPPER CLOSURE**

14" nylon separating zipper closure

**COLLAR**

The collar is banded. The back of the stand measures 1 1/2". The points are 3" in length and top stitched 3/16" from the edge. The interlinings are 100% polyester, 250 denier. Collar band has crease interlining. Permanent collar stays of proper length are fused or sewn inside collar so that no stitches are made through the bottom leaf. The stand fastens with one button.

**YOKE**

Two piece yoke of self-goods. The back of the yoke is topstitched 1/16".

**SLEEVES**

Each sleeve has a one piece pointed placket 1 1/4" wide both top and bottom, with one button and buttonhole centered in the vent opening. Sleeve setting and closing are sewn with an overedge and safety stitch. Cuffs close with two buttons and buttonholes, are 2 1/4" wide and have 1/4" topstitching on the edge. Cuffs are interlined.

**POCKETS**

**Piggyback Pocket Flaps** - Pocket flaps shall be Horace Small # EF0020 made in a piggyback construction with the bottom portion extending approximately 1/8" larger on all sides producing a two toned pocket flap. The bottom fabric shall be Yellow gold 100% polyester # 86772 and the top fabric shall be French blue 100% polyester color # 82884. Flaps are scalloped, finishing 53/8" in width, 2 1/4" in length at the center and 2 1/4" at each side. Flaps are placed with a 1/4" space between the pocket and flap and have one centered buttonhole with button. The left flap has a pencil opening 1-3/8" wide. Woven loop fastener 1/2" wide and 1" long is placed on edges of each flap to secure woven hook fastener placed on pockets. Flaps have crease interlining, 24 ligne metal "S" button shall be attached

#### EPAULETS

Piggyback Epaulets - Epaulets shall be Horace Small # EE0173 made in a piggyback construction with the bottom portion extending approximately 1/8" larger on all sides producing a two toned epaulet. The bottom fabric shall be Yellow gold 100% polyester # 86772 and the top fabric shall be French blue 100% polyester color # 82884. Sewn into sleeve head seam and measure approximately 1-7/8" tapering to 1 1/2" with end pointed. Epaulets are set approximately 1" from the collar seam. They are box-stitched to shoulders with a row of x-stitching 2 1/2" from sleeve head and diagonally sewn from each end of the seam to the sleeve. Epaulets have crease interlining. Epaulets are tacked to the shoulder at the point for a 24 ligne metal "S" metal button

#### EMBLEMS

There shall be a department supplied arm emblem sewn on each sleeve 1" from shoulder seam and centered.

#### BADGE TAB

Inside sling type of self-goods approximately 1-1/8" wide extends from joining seam to pocket of left front. To have two small, uncut buttonholes 1 1/4" apart with the lower buttonhole 1 1/4" above the flap.

#### SHIRT LABELING

Each garment is identified by permanent size, style number, cut number, fiber content, manufacturing RN number, care instructions and country of origin labeling.

#### BUTTONS

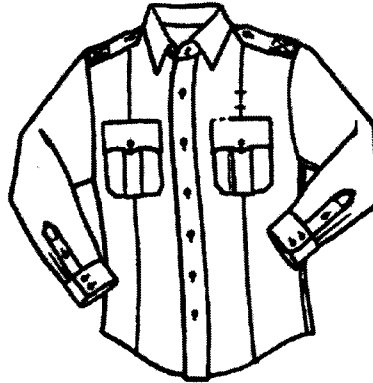
20-ligne melamine buttons dyed to match the fabric color.

#### PACKING

Shirts are polybagged individually.

#### WARRANTY

One year against workmanship or fabric defects.



**HORACE SMALL®, SENTRY PLUS SPECIFICATION-Female Long Sleeve Shirt, Zipper Front  
HS1185 -French Blue Heather**

**FABRIC**

**Solid:** A VISA® fabric from Milliken & Company for fabrics, Style #7430, 100% polyester, texturized woven. Weight 7 oz. per yard. Tropical weave, single warp, two ply filling.  
**Heather:** 100% polyester, texturized woven. Weight 8 oz. per yard from Burlington. Two ply warp and filling.

**CREASING**

Pocket flaps and epaulets are die creased to give uniform shape and size. There are two sewn in permanent military creases in front and three in back.

**FRONT**

The right front has a self-fabric center pleat 1-3/8" wide with a 2 1/4" turn back extending from neckline to bottom of shirt. It has two rows of stitching 7/8" apart. The center pleat is lined with 100% polyester, 280 denier. The right front has seven buttonholes 1/4" from the edge, 3" apart. The left front has an approximate 2 1/4" turn back extending from collar to bottom of shirt. Buttons are strongly attached through two thicknesses of material forming left front. They correspond to each buttonhole. The right front buttons over the left front.

**ZIPPER**

Shall have a 14" nylon separating zipper closure.

**COLLAR**

Die cut. Convertible collar measures 2-7/8" in length at points and is top stitched 3/16" from the edge. The interlinings are 100% polyester, 280 denier. Permanent collar stays of proper length are fused or sewn inside the collar so that no stitches are made through the bottom leaf.

**YOKE**

Two piece yoke of self-goods. The back of the yoke is topstitched 1/16".

**SLEEVES**

Each sleeve has a one piece pointed placket 1 1/4" wide both top and bottom, with one button and buttonhole centered in the vent opening. Sleeve setting and closing are sewn with an overedge and safety stitch. Cuffs close with one buttonhole and two buttons for adjustable fit. They are 2 1/4" wide and have 1/4" topstitching on the edge. Cuffs are interlined.

**POCKETS**

**Piggyback Pocket Flaps** - Pocket flaps shall be Horace Small # EF0020 made in a piggyback construction with the bottom portion extending approximately 1/8" larger on all sides producing a two toned pocket flap. The bottom fabric shall be Yellow gold 100% polyester # 86772 and the top fabric shall be French blue 100% polyester color # 82664. Flaps are scalloped, finishing 53/8" in width, 2 1/4" in length at the center and 2 1/4" at each side. Flaps are placed with a 1/4" space between the pocket and flap and have one centered buttonhole with button. The left flap has a pencil opening 1-3/8" wide. Woven loop fastener 1/2" wide and 1" long is placed on edges of each flap to secure woven hook fastener placed on pockets. Flaps have crease interlining, 24 kgs metal "S" button shall be attached.

**Terrebonne Parish Sheriff's Office, Female -Long Sleeve Shirt**  
**Page 2 of 2**

**EPAULETS**

Piggyback Epaulets - Epaulets shall be Horace Small # EE0173 made in a piggyback construction with the bottom portion extending approximately 1/8" larger on all sides producing a two toned epaulet. The bottom fabric shall be Yellow gold 100% polyester # 88772 and the top fabric shall be French blue 100% polyester color # 82884. Sewn into sleeve head seam and measure approximately 1-7/8" tapering to 1 1/4" with end pointed. Epaulets are set approximately 1" from the collar seam. They are box-stitched to shoulders with a row of x-stitching 2 1/4" from sleeve head and diagonally sewn from each end of the seam to the sleeve. Epaulets have crease interlining. Epaulets are tacked to the shoulder at the point for a 24 ligne metal "S" metal button

**EMBLEMS**

There shall be a department supplied arm emblem sewn on each sleeve 1" from shoulder seam and centered.

**BADGE TAB**

Inside sling type of self-goods approximately 1" wide extends from joining seam to pocket of left front. To have two small uncut buttonholes 1 1/4" apart with the lower buttonhole 1 1/4" above the flap.

**SHIRT LABELING**

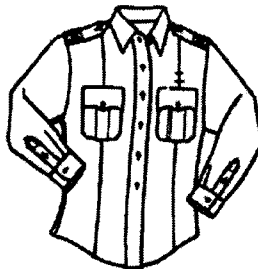
Each garment is identified by permanent size, style number, cut number, fiber content, manufacturing WPL number, care instructions and country of origin labeling.

**BUTTONS**

20-ligne melamine buttons dyed to match the fabric color.

**PACKING**

Shirts are polybagged individually.



**HORACE SMALL® NEW GENERATION®3 SPECIFICATION, HS3350 -Dark Navy**

**FABRIC**

**Outershell:** 100% Tactel® nylon, 4.0 oz. to 4.5 oz./square yard, plain weave  
**Yarns:** Warp 70 denier 34 filament single ply  
Weft 140 denier 102 filament two ply  
**Thread Count:** 108 x 72  
**Finish:** Hydroflex® coating. A polyurethane, monolithic coating. Double coated.  
Fabric must withstand 75 psi in a Mullins Hydrostatic test. Fabric must  
measure 2000 grams per square meter in a 24 hour period in a vapor  
pressure test.

**Permanent Lining:** 104 X 86 thread count. 70 denier 100% nylon taffeta

**DESIGN**

The jacket shall be a full cut, waist length model with two-way zipper front, Primaloft® zip-in/zip-out liner, shirred waistband, and zippered side vents. Coat construction with sealed seams shall be used throughout with body and sleeves being fully lined.

**BODY DETAIL**

The front shall be plain with box pleated patch pockets, flaps and badge tab. The inside facings shall be made of outer fabric and are to be sewn on top of the nylon lining which extends to the front edge of the jacket. There shall be a one piece back designed with the Articulated Gusset for full freedom of movement. There is to be a separate 2 1/2" shirred waistband with 2 1/2" heavy duty elastic. The entire waistband is to be shirred with the exception of an area 5 1/2" on either side of the front opening. There shall be side zipper entry on both side seams, approximately 11" in length and secured by a nylon zipper and snap closure. The shoulders shall have pads. A self goods reinforcement strip, approximately 3", shall be sewn on the inside of the jacket joined at the top of the waistband and extending from side to side. There shall be a 1 1/2" wide storm flap from the bottom of the collar to the bottom of the waistband on the right front to maintain windproof quality. There shall be three drop down panel access pockets; one located on each of the fronts and one located on the back of the jacket. There shall be a zipper track located at the center back neck concealed in a zipper garage for an optional hood.

**INSIDE DETAIL**

On the left side of the coat, there shall be a gun pocket installed on the permanent lining of the coat to accept a small frame hand gun. The gun pocket shall have a minimum opening of 4 1/2" and be a minimum of 6" deep. The gun pocket shall be furnished with a strap and snap closing. Bartacks shall reinforce the opening. There shall be two cut-in pockets on the left and right sides measuring approximately 5 1/2" wide and 6" deep. There shall be a strap and snap on the lining of each sleeve end for attaching the zip-in liner.

**SLEEVES**

The sleeves shall be one piece set in with a single needle machine. The bottom of the sleeve shall have hook and loop as well as elastic for adjustable fit.

**POCKETS**

There shall be two patch pockets with box pleats, finishing approximately 5 1/2" wide and 7 1/2" deep. Flaps shall be scalloped and self lined. They shall close with hook and loop on the side points and with a centered buttonhole. The pockets shall be self-lined with an opening of approximately 5 1/2" on the side. The left patch pocket is to have a pencil opening at the top of the flap. Both the pockets and the flaps are to be bartacked.

**COLLAR**

The stand-up collar shall be made using self material. It shall be interlined with Pellon.

**EPAULETS**

The epaulets shall be made of self goods. They shall be sewn into the sleeve head seam, "X" stitched, and tacked to the jacket at the neck.

**BADGE TAB**

The badge tab shall be made of the outer fabric and lined with pocketing being 2" tall by 1" wide. The first eyelet is 1/2" down from the top of the finished edge and the second is 1/2" up from the bottom finished edge. The eyelets are spaced 1" from center to center. It shall be centered 2-1/2" above the left pocket flap.

**ZIPPER**

There shall be a YKK #5, two-way molded nylon zipper in the front, 11" nylon zipper on each side vent and a zipper at the center back neck.

**BUTTONS AND SNAPS**

The pocket flaps and epaulets shall be secured with 24 ligne metal buttons. Flaps and epaulets shall close with 24 ligne metal buttons. Front fly shall be secured by high impact, non-reflective, non-glare, scratch resistant snaps.

**EMBLEMS**

There shall be a department supplied arm emblem sewn on each sleeve 1" from shoulder seam and centered.

**THREAD**

All sewing is to be done with polyester core thread or 100% spun polyester thread.

**SIZE TAG AND CARE INSTRUCTIONS**

Each jacket shall have a sewn in woven size label. There shall also be a printed label with care instructions and each coat marked with lot number, size, fiber content and WPL number.

**PRIMALOFT® LINER SPECIFICATIONS**

**FABRIC**

Outer Shell: 160 x 90 70 denier down-proof nylon taffeta  
Insulation: Primaloft®, 2 - 3.0oz body and sleeve from Albany Industries

**DESIGN**

The liner is made over a full-cut long-sleeve liner pattern with side vents to accommodate side zip jackets.

**BODY DETAIL**

The liner has long sleeves and knit wristlets with an anchor loop to accept buttons. The edges of the entire body are bound with 1-8/16" nylon bias binding. The side seams, shoulders, and sleeve seams are joined with a serge-sew safety-stitch machine. The armholes have knit inserts to allow freedom of movement.

**POCKET**

There is one lower right inside patch pocket. The pocket is bound with 1-8/16" nylon bias binding and is attached with a single-needle machine.

**ZIPPER**

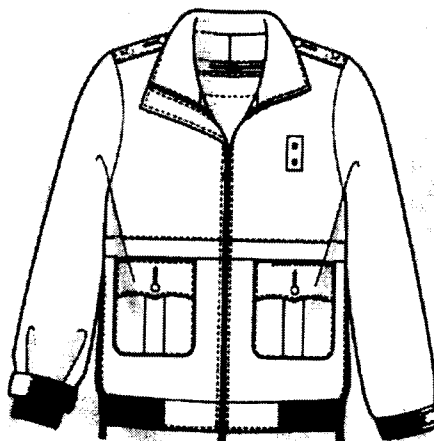
There is a molded nylon zipper, with a center mark, attached to the liner and interchangeable. The zipper must be of sufficient length to attach to the facing of a jacket.

**WARRANTY**

One year against workmanship or fabric defects.

**H53360**

**Dark Navy**



## **Terrebonne Parish Sheriff's Office-Tactical Pants**

**Page 1 of 1**

### **Propper Style # F5220 (Canvas)-Khaki or Navy**

**Fade, shrink and wrinkle resistant**

**DuPont™ Teflon® fabric protector repels stains and liquids**

**Low profile appearance for use both on and off duty Includes D-ring for keys or tool**

**Extra-large belt loops designed for nylon duty belt**

**Action-stretch waistband for enhanced comfort Reinforced seat and knee**

**Zipper Fly with sturdy snap closure**

**Nine-pocket design**

**Two cargo pockets with hook and loop closure**

**Two hook and loop back pockets with wallet "pocket in a pocket"**

**Two front pockets with reinforced opening for folding knife or tool clip**

**Internal openings for knee pads**

**Cell phone pocket with hook and loop closure**

**Two hidden coin pockets**



**Propper Style # F5220**





## Select Snag-Proof Tactical Polo CS410



With strategically placed mid dices and dual pen pockets, our tactical polo is designed for event staff, security and law enforcement. Built for performance, this snag-proof, moisture wicking, color fighting shirt will keep you sharp and professional-looking on or off the job.

- 6.6 ounce, 100% snag-proof polyester
- Rema-texology
- Double-needle stitching throughout
- Tag-free label
- Flat knit collar
- 2-button placket with dyed to-match buttons
- Mid dices at center pocket and shoulders
- Raglan sleeves
- Reinforced dual pen pockets on left sleeve
- Side vents
- Drop tails stay tucked in

\*Due to the nature of 100% polyester performance fabrics, special care must be taken throughout the screen printing process.

## CARE INSTRUCTIONS



front



back

## Tips For Effectively Screen Printing Polyester Fabrics

## HOW TO MEASURE



## CHEST\*

With arms down at sides, measure around the upper body under arms & over the fullest part of the chest.

## SIZE CHART

	XS	S	M	L	XL	2XL	3XL	4XL
Chest	32-34	34-36	36-40	40-44	44-48	48-52	52-56	56-60

## COLOR INFORMATION

Black  
PMS 415 CCharcoal  
PMS 428 CDark Green  
PMS 447 CDark Navy  
PMS 428 CLight Gray  
PMS 428 CRed  
PMS 121 CBlue  
PMS 151 CWhite  
PMS 118 CYellow  
PMS 108 CLight Blue  
PMS 108 C