

9066



CENTRALBIDDING
FROM CENTRAL AUCTION HOUSE

**5000112210 - LABOR, MATERIALS, PARTS, AND EQUIPMENT TO
INSTALL KITCHEN EQUIPMENT AT THE M L KING PLAYGROUND**
Jefferson Parish Government

Project documents obtained from www.CentralBidding.com

22-Jan-2015 02:19:47 PM

DATE: 1/21/2015

INVITATION TO BID
THIS IS NOT AN ORDER

BID NO.: 50-00112210

JEFFERSON PARISH
PURCHASING DEPARTMENT
P.O. BOX 9
GRETN, LA. 70054-0009
504-364-2678

Page: 1

BUYER: LFRANCIS@jeffparish.net

BIDS WILL BE RECEIVED IN THE PURCHASING DEPARTMENT, SUITE 4400, JEFFERSON PARISH GENERAL GOVERNMENT BUILDING, 200 DERBIGNY STREET, GRETN, LA 70053 UNTIL 2:00 PM, 2/26/2015 AND PUBLICLY OPENED THEREAFTER.

LATE BIDS WILL NOT BE ACCEPTED

Unless submitting via online (see Page 3), each bid must be submitted in a sealed envelope bearing on the outside; the name of the Bidder, his address, and the name of the project for which the bid is submitted and the bid number.

NOTE: ONLY BIDS WRITTEN IN INK OR TYPEWRITTEN, AND PROPERLY SIGNED BY A MEMBER OF THE FIRM OR AUTHORIZED REPRESENTATIVE, WILL BE ACCEPTED. PENCIL AND/OR PHOTOSTATIC FIGURES OR SIGNATURES SHALL RESULT IN BID REJECTION.

INSTRUCTIONS FOR BIDDERS AND GENERAL CONDITIONS
THE FOLLOWING INSTRUCTIONS APPLY TO ALL BIDS

All bids submitted are subject to these instructions and general conditions and any special conditions and specifications contained herein, all of which are made part of this bid proposal reference. By submitting a bid, vendor agrees to comply with all provisions of Louisiana Law as well compliance with the Jefferson Parish Code of Ordinances, Louisiana Code of Ethics, applicable Jefferson Parish ethical standards and Jefferson Parish Resolution No. 113646 and/or Resolution No. 113647.

All vendors submitting bids must register as a Jefferson Parish vendor if not already yet registered. Bidders may be required to furnish current W-9 Forms and respective Tax Identification Numbers within 10 days after bid opening if such information is not on file or not up to date. Forms to register may be downloaded from www.purchasing.jeffparish.net and clicking on Vendor Information.

All quotations shall be based on F.O.B. Agency warehouse or job site, anywhere within the Parish as designated by the Purchasing Department. This provision does not apply to public works projects

JEFFERSON PARISH requires all products to be new (current) and all work must be performed according to standard practices for the project. Unless otherwise specified, no aftermarket parts will be accepted. Unless otherwise specified, all workmanship and materials must have at least one (1) year guaranty, in writing, from the date of delivery and/or acceptance of the project. Any deviations or alterations from the specifications must be indicated and/or supporting documentation supplied with bid submission.

Bidders should submit all questions in writing and fax them to the Purchasing Department at (504) 364-2693 no later than FIVE (5) working days prior to bid opening. Bid numbers should be mentioned in all requests. Questions may also be emailed to the buyer for this bid at the email address listed above. If submitting online, vendors may send questions via the E-Procurement site no later than Five (5) working days prior to the bid opening.

If this bid requires a pre-bid conference (see Additional Requirements section), bidders are advised that such conference will be held to allow bidders the opportunity to identify any discrepancies in the bid specifications and seek further clarification regarding instructions. The Purchasing Department will issue a written response to bidders' questions in the form of an Addendum. Please note that all official communication will be expressed in the form of an addendum.

All formal Addenda require written acknowledgement on the bid form by the bidder. Failure to acknowledge an Addendum on the bid form shall cause the bid to be rejected. JEFFERSON PARISH reserves the right to award bid to next lowest responsive and responsible bidder in this event.

The purpose and intention of this invitation to bid is to afford all suppliers an equal opportunity to bid on all construction, maintenance, repair, operating supplies and/or equipment listed in this bid proposal. JEFFERSON PARISH WILL ACCEPT ONE BID ONLY FROM EACH VENDOR. Items bid must meet specifications.

JEFFERSON PARISH will accept one price for each item unless otherwise indicated. Two or more prices for one item will result in bid rejection. Bidders are required to complete, sign and return the bid form and/or complete and return the associated line item pricing forms as indicated.

If the bid exceeds \$30,000.00 and the company is duly authorized to do business in the state of Louisiana, a corporate resolution must be submitted with the bid or the person signing the bid documents must be listed on the Louisiana Secretary of State's website as an officer of the corporation, unless bidder has otherwise complied with LSA-R.S. 38:2212(A)(1)(c) or LSA-R.S. 38:2212 (O). If the bid is in excess of \$30,000 and bidder is registered out of the state of Louisiana, a corporate resolution must be submitted with the bid, unless bidder has otherwise complied with LSA-R.S. 38:2212(A)(1)(c) or LSA-R.S. 38:2212 (O). Failure to comply will cause bid to be rejected; the Parish reserves the right to award bid to the next lowest responsive and responsible bidder in this event. Bids submitted by Owner or Sole Proprietorships must include certification that he or she owns the entity for which the bid is signed. Sole proprietors submitting bids for public works projects shall within 10 days after bid opening submit sole proprietorship certification.

NOTE: A sample corporate resolution can be downloaded from our website <http://purchasing.jeffparish.net> or you may provide your own document. A sample certification of sole proprietorship can also be downloaded from our website <http://purchasing.jeffparish.net> or you may provide your own document.

INSTRUCTIONS FOR BIDDERS AND GENERAL CONDITIONS

A. AWARD OF CONTRACT: JEFFERSON PARISH reserves the right to award contracts or place orders on a lump sum or individual item basis, or such combination, as shall in its judgment be in the best interest of JEFFERSON PARISH. Every contract or order shall be awarded to the LOWEST RESPONSIVE and RESPONSIBLE BIDDER, taking into consideration the CONFORMITY WITH THE SPECIFICATIONS and the DELIVERY AND/OR COMPLETION DATE. IN THE EVENT OF SPLIT AWARD, THE PURCHASING DEPARTMENT MAY CONTACT VENDORS TO REQUEST REQUIRED AFFIDAVITS. THOSE VENDORS WILL HAVE 10 DAYS FROM THE DATE OF NOTICE TO SUBMIT COMPLETE, SIGNED AND NOTARIZED AFFIDAVITS IN ORIGINAL FORMATS.

All bid prices shall remain valid for 45 days. Jefferson Parish and the lowest responsive and responsible bidder(s) by mutual written consent may mutually agree to extend the deadline for award by one (1) or more extensions of thirty (30) calendar days.

Preference is hereby given to materials, supplies, and provisions produced, manufactured or grown in Louisiana, quality being equal to articles offered by competitors outside the state. "LSA-R.S.38:2251-2261"

B. USE OF BRAND NAMES AND STOCK NUMBERS: Where brand names and stock numbers are specified, it is for the purpose of establishing certain minimum standards of quality. Bids may be submitted for products of equal quality, provided brand names and stock numbers are specified. Complete product data may be required prior to award.

C. CANCELLATION OF CONTRACT: JEFFERSON PARISH reserves the right to cancel all or any part if not shipped promptly. No charges will be allowed for parking or cartage unless specified in quotation. The order must not be filled at a higher price than quoted. JEFFERSON PARISH reserves the right to cancel any contract at anytime and for any reason by issuing a THIRTY (30) day written notice to the contractor.

For good cause and as consideration for executing a contract with Jefferson Parish, vendor conveys, sells, assigns and transfers to Jefferson Parish or its assigns all rights, title and interest in and to all causes of action it may now or hereafter acquire under the antitrust laws of the United States and the State of Louisiana, relating to the particular good or services purchased or acquired by Jefferson Parish.

D. PRICES: Jefferson Parish is exempt from paying sales tax under LSA-R.S. 47:301 (8)(c). All prices for purchases by Jefferson Parish of supplies and materials shall be quoted in the unit of measure specified and unless otherwise specified, shall be exclusive of state and Parish taxes. The price quoted for work shall be stated in figures. In the event there is a difference in unit prices and totals, the unit price shall prevail.

Quantities listed are for bidding purposes only. Actual requirements may be more or less than quantities listed.

Bidders are not to exclude from participation in, deny the benefits of, or subject to discrimination under any program or activity, any person in the United States on the grounds of race, color, national origin, or sex; nor discriminate on the basis of age under the Age Discrimination Act of 1975, or with respect to an otherwise qualified handicapped individual as provided in Section 504 of the Rehabilitation Act of 1973, or on the basis of religion, except that any exemption from such prohibition against discrimination on the basis of religion as provided in the Civil Rights Act of 1964, or Title VI and VII of the Act of April 11, 1968, shall also apply. This assurance includes compliance with the administrative requirements of the Revenue Sharing final handicapped discrimination provisions contained in Section 51.55 (c), (d), (e), and (k)(5) of the Regulations. New construction or renovation projects must comply with Section 504 of the 1973 Rehabilitation Act, as amended, in accordance with the American National Standard Institute's specifications (ANSI A17.1-1961).

DATE: 1/21/2015

BID NO.: 50-00112210

INSTRUCTIONS FOR BIDDERS AND GENERAL CONDITIONS

Page: 3

E. RESPONSE TO INVITATION: If your company is unable to bid on this request, please state your reason on bid form, and return to this office before bid opening date. Failure to do so may result in the removal of your company from Jefferson Parish's vendors list.

F. POSTING OF BIDS: A listing of bids will be posted on bulletin board in Suite 4400, Jefferson Parish General Government Building, Gretna, LA and will remain posted until close of respective bids.

Advertised bids will be tabulated and a copy of the tabulation will be forwarded to each responding bidder.

IN ACCORDANCE WITH STATE REGULATIONS JEFFERSON PARISH OFFERS ELECTRONIC PROCUREMENT TO ALL VENDORS

This Electronic Procurement System allows vendors the convenience of reviewing and submitting bids online. This is a secure site and authorized personnel have limited read access only. Please note requirements contained in this bid package for electronic bid submission.

Please visit the Purchasing Department webpage at <http://purchasing.jeffparish.net> to register and review Jefferson Parish solicitations.

The general specifications for construction projects and the purchase of materials, services and/or supplies are those adopted by the JEFFERSON PARISH Council by Resolution No. 113646 or 113647 dated 12/09/09. The general conditions adopted by this resolution shall be considered as much a part of this document as if they were written wholly herein. A copy may be obtained from the Office of the Parish Clerk, Suite 6700, Jefferson Parish General Government Building, 200 Derbigny Street, Gretna, LA 70053. You may also obtain a copy by visiting the Purchasing Department webpage at <http://purchasing.jeffparish.net> and clicking on Online Forms.

ADDITIONAL REQUIREMENTS FOR THIS BID

PLEASE MATCH THE NUMBERS PRINTED IN THIS BOX WITH THE
CORRESPONDING INSTRUCTIONS BELOW

2,3,5,6,8,9,10,11,13,15

**PRE-BID CONFERENCE TO BE HELD AT: 2400 LESTER STREET HARVEY LA 70058
10:00AM
ON 2/10/2015**

1. All bidders must attend the pre-bid conference in relation to this bid; attendance is mandatory. Failure to attend will prohibit a company from submitting a bid. Vendors arriving after the mandatory pre-bid conference begins will not be allowed to sign in as evidence of attendance.
2. Attendance to this pre-bid conference is optional. However, failure to attend the pre-bid conference shall not relieve the bidder of responsibility for information discussed at the conference. Furthermore, failure to attend the pre-bid conference and inspection does not relieve the successful bidder from the necessity of furnishing materials or performing any work that may be required to complete the work in accordance with the specification with no additional cost to the owner.
3. Contractor must hold current applicable JEFFERSON PARISH licenses with the Department of Inspection and Code Enforcement. Contractor shall obtain any and all permits required by the JEFFERSON PARISH Department of Inspection and Code Enforcement. The contractor shall be responsible for the payment of these permits. All permits must be obtained prior to the start of the project. Contractor must also hold any and all applicable Federal and State licenses. Contractor shall be responsible for the payment of these permits and shall obtain them prior to the start of the project.

INSTRUCTIONS FOR BIDDERS AND GENERAL CONDITIONS

4. A LA State Contractor's License will be required in accordance with LSA R.S. 37-2150 et. seq. and such license number will be shown on the outside of the bid envelope. Failure to comply will cause the bid to be rejected. Additionally if submitting the bid electronically, then the license number must be entered in the appropriate field in the Electronic Procurement system. Failure to comply will cause the bid to be rejected.
5. It is the bidder's responsibility to visit the job site and evaluate the job before submitting a bid.
6. Job site must be clean and free of all litter and debris daily and upon completion of the contract. Passageways must be kept clean and free of material, equipment, and debris at all times. Flammable material must be removed from the job site daily because storage will not be permitted on the premises. Precautions must be exercised at all times to safeguard the welfare of JEFFERSON PARISH and the general public.
7. PUBLIC WORKS BIDS: All awards for public works in excess of \$5,000.00 will be reduced to a formal contract which shall be recorded at the contractor's expense with the Clerk of Court and Ex-Officio Recorder of Mortgages for the Parish of Jefferson. A price list of recordation costs may be obtained from the Clerk of Court and Ex-Officio Recorder of Mortgages for the Parish of Jefferson. All awards in excess of \$25,000.00 will require both a performance and a payment bond. Unless otherwise stated in the bid specifications, the performance bond requirements shall be 100% of the contract price. Unless otherwise state in the bid specifications, the payment bond requirements shall be 100% of the contract price. Both bonds shall be supplied at the signing of the contract.
8. NON-PUBLIC WORKS BIDS: A performance bond will be required for this bid. The amount of the bond will be 100% of the contract price unless otherwise indicated in the specifications. The performance bond shall be supplied at the signing of the contract.
9. NON-PUBLIC WORKS BIDS: A payment bond will be required for this bid. The amount of the bond will be 100% of the contract price unless otherwise indicated in the specifications. The payment bond shall be supplied at the signing of the contract.
10. Unless otherwise stated in the bid specifications, the successful bidder will be required to procure standard insurance policies evidencing Parish-mandated insurance requirements as indicted on the attached sheet. The current certificate of insurance must be submitted by low bidder within 10 days after bid opening to the Purchasing Department. Failure to comply will cause bid to be rejected. JEFFERSON PARISH reserves the right to award bid to the next lowest responsive and responsible bidder in this event.
11. A bid bond will be required with bid submission in the amount of 5% of the total bid, unless otherwise stated in the bid specifications. Acceptable forms shall be limited to cashier's check, certified check, money order, or surety bid bond. If submitting bid online, vendors must submit bond through respective online clearinghouse bond management system as indicated in the Electronic Procurement system.
12. This is a requirements contract to be provided on an as needed basis. JEFFERSON PARISH makes no representations or warranties with regard to minimum guaranteed quantities unless otherwise stated in the bid specifications.
13. Freight charges should be included in total cost when quoting. If not quoted FOB DELIVERED, freight must be quoted as a separate item. Bid may be rejected if not quoted FOB DELIVERED or if freight charges are not indicated on bid form.
14. PUBLIC WORKS BIDS - Completed, Signed and Properly Notarized Affidavits (in Original Format) required; Non-Conviction Affidavit, Non-Collusion Affidavit, Campaign Contribution Affidavit and E-Verify Affidavit must be completed, signed, notarized and submitted by low bidder within 10 days after bid opening to the Purchasing Department on all solicitations for construction, alteration or demolition of public building or project, including but not limited to requirements found in LSA-RS 38:2212.9; LSA-RS 38:2212.10; LSA-RS 38:2224; Code of Ordinances, Jefferson Parish, Louisiana, Sec 2-923.1. Failure to comply will cause bid to be rejected; the Parish reserves the right to award bid to the next lowest responsive and responsible bidder in this event. For the convenience of vendors, all affidavits have been combined into one form entitled PUBLIC WORKS BID AFFIDAVIT. This affidavit must be submitted in its original format for the bid to be considered responsive.
15. NON PUBLIC WORK BIDS - Completed, Signed and Properly Notarized Affidavits (in Original Format) required; Non-Collusion Affidavit, and Campaign Contribution Affidavit must be completed, signed, notarized and submitted by low bidder with bid submission within 10 days after bid opening to the Purchasing Department. See LSA-RS 38:2212.10; LSA-RS 38:2224; Code of Ordinances, Jefferson Parish, Louisiana, Sec 2-923.1 Failure to comply will cause bid to be rejected; the Parish reserves the right to award bid to the next lowest responsive and responsible bidder in this event. For the convenience of vendors, all affidavits have been combined into one form entitled NON-PUBLIC WORKS BID AFFIDAVIT. This affidavit must be submitted in its original format for the bid to be considered responsive.

It shall be the duty of every parish officer, employee, department, agency, special district, board, and commission; and the duty of every contractor, subcontractor, and licensee of the parish, and the duty of every applicant for certification of eligibility for a parish contract or program, to cooperate with the Inspector General in any investigation, audit, inspection, performance review, or hearing pursuant to Jefferson Parish Code of Ordinances Section 2-155.10(19). By submitting a bid, vendor acknowledges this and will abide by all provisions of the referenced Jefferson Parish Code of Ordinances.

DATE: 1/21/2015

Page: 5

BID NO.: 50-00112210

BID FORM
Non Public Works

All Public Work Projects are required to use the Louisiana Uniform Public Work Bid Form

All prices must be held firm unless an escalation provision is requested in this bid. Jefferson Parish will allow one escalation during the term of the contract, which may not exceed the U.S. Bureau of Labor Statistics National Index for all Urban Consumers, unadjusted 12 month figure. The most recently published figure issued at the time an adjustment is requested will be used. A request must be made in writing by the vendor, and the escalation will only be applied to purchases made after the request is made.

Are you requesting an escalation provision?

YES _____ NO ☒

MAXIMUM ESCALATION PERCENTAGE REQUESTED _____%

INITIAL BID PRICES WILL REMAIN FIRM THROUGH THE DATE OF _____

For the purposes of comparison of bids when an escalation provision is requested, Jefferson Parish will apply the maximum escalation percentage quoted by the bidder to the period to which it is applied in the bid. The initial price and the escalation will be used to calculate the total bid price. It will be assumed, for comparison of prices only, that an equal amount of material or labor is purchased each month throughout the entire contract.

DELIVERY: FOB JEFFERSON PARISH

INDICATE DELIVERY DATE ON EQUIPMENT AND SUPPLIES _____

LOUISIANA CONTRACTOR'S LICENSE NO.: (if applicable) _____

THIS SECTION MUST BE COMPLETED BY BIDDER:

FIRM NAME: Douglas Equipment

ADDRESS: 301 North Street

CITY, STATE: Bluefield WV ZIP: 24701

TELEPHONE: 304, 327-0149 ext 1172 FAX: 304, 325-3848

EMAIL ADDRESS: pepper@douglasequipment.us

In the event that addenda are issued with this bid, bidders MUST acknowledge all addenda on the bid form. Bidder must acknowledge receipt of an addendum on the bid form as indicated. Failure to acknowledge any addendum on the bid form will result in bid rejection.

Acknowledge Receipt of Addenda: NUMBER: 1 2/13/15

NUMBER: _____

NUMBER: _____

NUMBER: _____

TOTAL PRICE OF ALL BID ITEMS: \$ _____

AUTHORIZED SIGNATURE: Pepper Dawn Martin

TITLE: Bid Specialist

Pepper Dawn Martin
Printed Name

SIGNING INDICATES YOU HAVE READ AND COMPLY WITH THE INSTRUCTIONS AND CONDITIONS.

NOTE: All bids should be returned with the BID NUMBER and BID OPENING DATE indicated on the outside of the envelope submitted to the Purchasing Department.

INVITATION TO BID FROM JEFFERSON PARISH - continued

BID NO.: 50-00112210

SEALED BID

ITEM NUMBER	QUANTITY	U/M	DESCRIPTION OF ARTICLES	UNIT PRICE QUOTED	TOTALS
1	1.00	JOB	<p>LABOR, MATERIALS, PARTS, AND EQUIPMENT TO INSTALL KITCHEN EQUIPMENT AT THE M L KING PLAYGROUND CONCESSION STAND</p> <p>0010 The following job scope is to include all of the equipment, parts, materials, installation, labor and shipping costs involved, plus any inspections, permits and fees to complete job to turn-key status. Job site is 2400 Lester Street, Harvey, LA 70058. Vendors can view jobsite by contacting Dennis Seal or Chad Thomassie at 504-349-5000 x 113, or 504-349-5006. Job specs included on attachment Dennis</p> <p>BONDS REQUIRED FOR THIS SOLICITATION: 5% BID SURETY BOND 50% PERFORMANCE BOND 50% PAYMENT BOND</p> <p>The Installer John Gagliano has concerns that some of the equipment will have difficulty fitting thru the door (35" wide). He has contacted Dennis Seal &/or Chad Thomassie to arrange to visit, but has not been able to do so before the bid expires.</p> <p>I wanted to be sure to get you pricing & can supply the install pricing as soon as I receive it.</p> <p>Thank You - Pepper Martin</p> <p>Pricing assumes that all lines from a specific Manufacturer are purchased as a whole. If not, shipping charges may incur.</p>	<p>^{PDM} 22674.00</p> <p>^{PDM} 22674.00</p> <p>THIS pricing includes all equipment & being delivered drop ship <u>Only</u> to your site</p>	<p>\$22674.00</p> <p>^{PDM} 22674.00</p>

Job to include:

- AS Specified ✓
- 1 Hood "Captive Aire" model number 4812SND-2-PSP-F or equal, 6 feet long, fire system "Ansul 3.00" or equal, WC 3 gallon, exhaust fan model number NCA14FA or equal, grease cup included, supply fan model number A1-G10 or equal, electrical system model number 11111002 or equal, item number 3 on attached diagram. See diagram for location

o NOTE: Fire and safety system hook up to include installation of all equipment nozzles, submittals to State Fire Marshall, walk through test and one year warranty on all manufactured components.

- AS Specified ✓
- 1 Range "Lang Manufacturing" model number R36B-ATA or equal, item 1, see diagram for location.

- 1 Fryer, "Dean Industries" model number SR14E-STCK or equal, item 2, see diagram for location.

- AS Specified ✓
- 1 Work table, "Arc" model number FTE-1530-16 or equal, item 4, see diagram for location

- Alternates
- 1 Work table, "Arc" model number TS-3048-16 or equal, item number 5, see diagram for location

- 1 Overshelf, "Arc" model number DOS-1448 or equal, over item number 5, see diagram for location

- Alternates Lines 4-8
- 1 Work table, "Arc" model number TS-3036-16 or equal, item number 10, see diagram for location

- 1 Dish Cabinet, "Arc" model number EDC-1872-16 KD or equal, item number 7, see diagram for location

- AS Specified ✓
- 1 Wall cabinet, "John Boos" model number WCH-36 with door lock kits or equal, item number 9, see diagram for location

- 1 Heat lamp, "Vollrath" model number OHC-500 or equal, to be place on item 4 on diagram

- AS Specified ✓
- 1 Steam table pan, "Winco" model number SPJH-102 with wire pan grate model number PGW-1018 or equal, to be placed on item number 4

- Alternates
- 1 Pot rack with shelf, "Arc" model number PRWS-48 or equal, item 8, see diagram for location

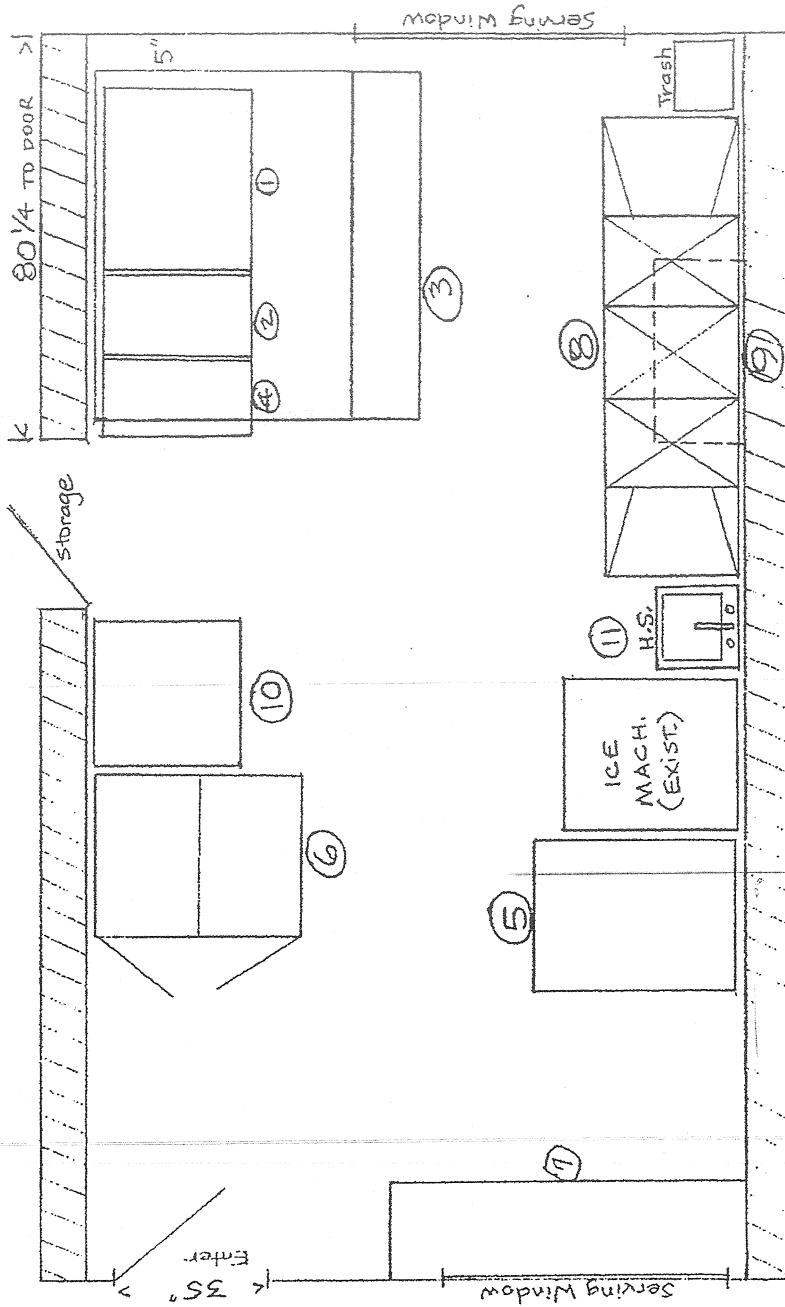
- Alternates
- 1 Three compartment sink, "Arc" model number S3-1818-18LR with a "Krowne" metal splash mount faucet model number 12-812L or equal, under item 8 on diagram

- AS Specified ✓
- 1 Refrigerated merchandiser, "Beverage Aire" model number LV38-1W with lock assembly kit model number 61C11-049D-01 and Gravity shelf organizer kits, one for each door, model number 61C31-201A-01 or equal, item number 6 on diagram

- AS Specified ✓
- 1 Hand sink, "Regency" model number SEHS17 with faucet or equal, item number 11 on diagram

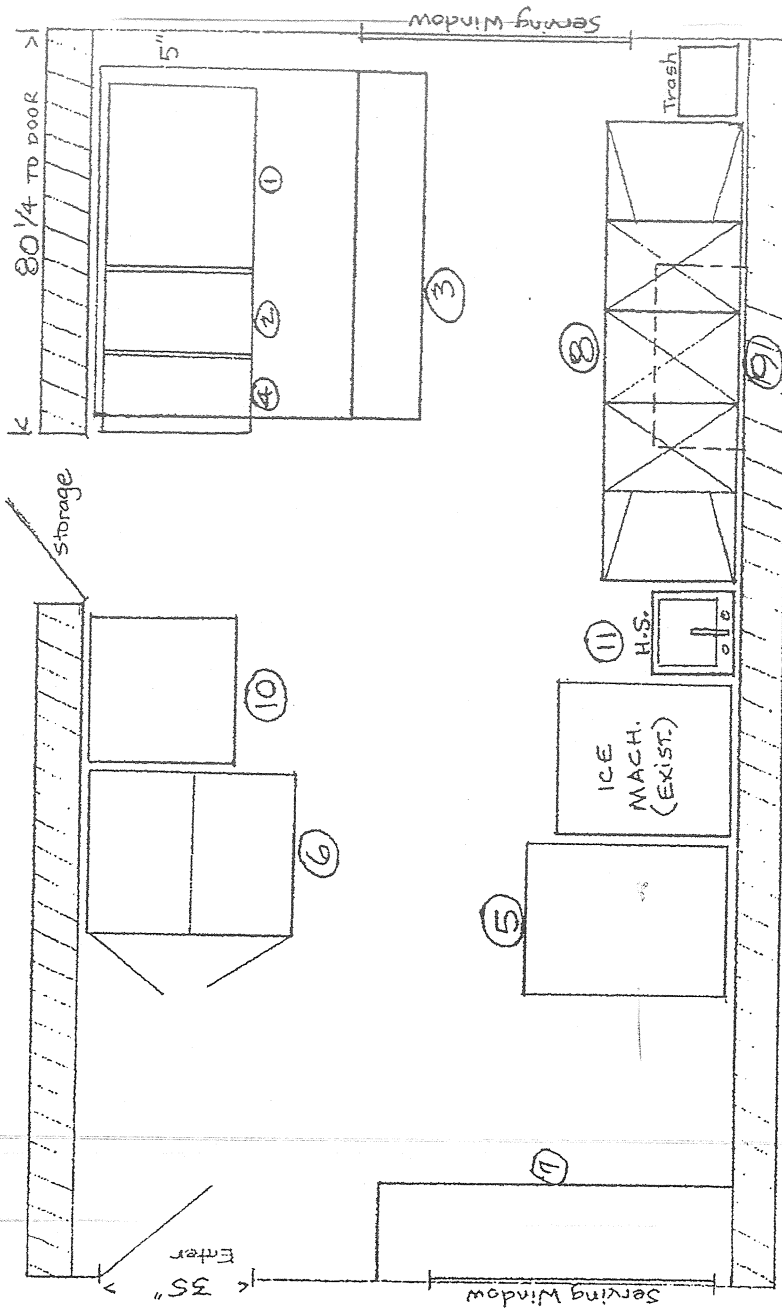
Contractor will be responsible for any damage to property resulting from work being performed from start to completion, also responsible for mandatory daily clean-up, items must secured on site and site must be safe to the public at all times.

JPRD would like to set up a pre-bid meeting at MLKing Playground, 2400 Lester St., Harvey, LA 70058



M.L. King Concession equipment layout

D Seal



D Seal

M.L. King Concession equipment layout



Quote

02/24/2015

Project:

Jefferson Parish Government-9066
M L King Playground
2400 Lester ST
Harvey, LA 70058

From:

Douglas Equipment
Pepper Martin
301 North St.
Bluefield, WV 24701-4048
304-327-0149 1122 (Contact)

Job Reference Number: 50-00112210

Item	Qty	Description	Sell	Sell Total
1	1 ea	HOOD Captive-Aire Model No. QUOTE#2260872 Hood #1 Qty. 1 4824ND-2-PSP-F - 6ft 1" Long Exhaust-Only Wall Canopy Hood with Front Perforated Supply Plenum with Built-in 3" Back Standoff Qty. 1 - 430 SS Where Exposed Qty. 1 - Fire Cabinet Wall Mounted (Additional charges may apply for cabinet if not sold with fire system) Qty. 4 - FILTER - 16" tall x 16" wide Stainless Steel Captrate Solo filter with hook, ETL Listed. Particulate capture efficiency: 93% efficient at 9 microns, 72% efficient at 5 microns Qty. 2 - L55 Series E26 Canopy Light Fixture - High Temp Assembly, Includes Clear Thermal and Shock Resistant Globe (L55 Fixture), Bulbs By Others Qty. 1- - EXHAUST RISER - Factory installed 10" X 10" Qty. 2 - SUPPLY RISER - 8"x 26" Supply Riser with Volume Dampers Qty. 1 - 1/2 Pint Grease Cup New Style, Flanged Slotted Qty. 1 - FIELD WRAPPER 18.00" High Front, Left, Right		

Initial: _____
Page 1 of 6

Item	Qty	Description	Sell	Sell Total
	Qty. 1	- BACKSPLASH 80.00" High X 76.00" Long 430 SS (Includes End Caps & Divider Bars)		
	Qty. 1	- RIGHT END STANDOFF (FINISHED) 3" Wide 48" Long		
	Qty.1	- Face Mount 1st Switch		
	Qty. 1	- Face Mount Extra Switch(es)		
1 ea	FIRE SYSTEM #1 Qty. 1	ANSUL-3.0-WC Ansul 3 gallon Fire System in Wall Mounted Utility Cabinet (includes pre-piped hood(s) with detection, tank(s), release mechanism, microswitches and pull station).		
		Includes piping for hood: 1.		
	Qty. 1	- GAS VALVE - 2" Mechanical Shutoff Valve (Ansul)(28-55610) - Includes Upstream Strainer assembly; SUPPLIED BY DISTRIBUTOR		
1 ea	FAN#1 DU50HFA-EXHAUST FAN Qty. 1	DU50HFA High Speed Direct Drive Centrifugal Upblast Exhaust Fan with speed control (speed control included for single phase only), disconnect switch and 13-3/4" wheel.		
		Exhaust Fan handles 1125 CFM @ -1.000" wc ESP, Fan runs at 1514 RPM. Exhaust Motor: 0.500 HP, 1 Phase 115 V, 60Hz, 8.1 FLA, ODP (Open Drip Proof)		
	Qty. 1	- Grease Cup for kitchen-duty centrifugal exhaust fans, Box Dimensions 15-3/4 L X 5-1/16 W X 3-3/4 H (18 GA.) (Includes Down Spout)		
1 ea	FAN #2 A1-G10 - SUPPLY FAN Qty 1	A1-G10 Direct Drive Direct Drive Untempered Supply Unit with 10" Blower in Size #1 Housing with speed control, disconnect switch.		
		Supply Fan handles 900 CFM @ 0.450" wc ESP, Fan runs at 765 RPM. Supply Motor: 0.500 HP, 1 Phase 115 V, 60Hz, 6.8 FLA, ODP (Open Drip Proof)		
		Down Discharge - Air Flow Right -> Left		
	Qty. 1	- Sloped Filtered Intake for Size #1 Modular Untempered Supply Unit.		
		21.813" Wide x 44.375" Long x 23.375" High.		
		Includes 2" MV EZ Kleen Metal Mesh Filters.		
1 ea	CURB FOR FAN #1 DU50HFA - EXHAUST FAN Qty. 1	Curb CRB19.5X20E On Fan # 1 3.000:12.000 Pitch		
		- Hinged Base for Curb. Standard Hinge attached to curb. Used on Fans with wheels 20 inches or smaller. 12 GA Galvanized.		
	Qty. 1	Vented Base for Curb		


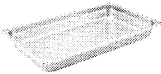
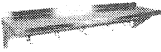


Item	Qty	Description	Sell	Sell Total
	1 ea	CURB FOR FAN #2 A1-G10 - SUPPLY FAN Qty. 1 Curb CRB21X16 On Fan # 2 3.000:12.000 Pitch		
	1 ea	ELECTRICAL SYSTEM #1 Qty. 1 SC-111110FP 120V 1 Phase w/ 1 Exhaust Fan, 1 Supply Fan, Exhaust on in Fire, Lights out in Fire, Fan(s) On/Off Thermostatically Controlled. Room temperature sensor shipped loose for field installation. Includes 1 Duct Thermostat kit.		
		Qty. 1 - 14x18 Stainless Steel Box. Includes latch and backplate		
		Qty. 1 - Digital Prewire Lighting Relay Kit. Includes hood lighting relay & terminal blocks. Allows for up to 1400W of lighting each.		
		Qty. 1 - CAT-5E CABLE - 50 Foot.		
	1 ea	FIRE SYSTEM HOOKUP Fire System Hookup		
	1 ea	TAX Tax		
		Allow 4" on top of the hood for hanging angles and lighting conduit		
		Service Platforms and/or Railing for fans by others		
		All Wiring by Others		
		All electrical shut downs and shunt trip breakers by others		
		Gas Valve put in line by others		
		Standing Seam Metal Roof Curbs extra		
		Performance Test on Hood extra (if req'd by AHJ)		
		Exhaust duct insulation and/or sheetrock chase by others		
		Non Union Labor for Fire System		
		Wrapper Panels Are Sized For Up To 10' - 0" Ceilings		
		If ceiling height is below 8' - 6", consult Captiveaire for re-pricing		
		Backsplash must be ordered at the same time as hoods		
		It is the responsibility of the owner/installing contractor to comply w/ NFPA 96 clearance to combustible requirements, as required by International Mechanical Code		
		FIRE SYSTEM INSTALLATION (Factory Pre-pipe / Double Trip) Wet chemical fire suppression system includes: Pre-piped in ventilator, required hardware and nozzles, all final connection on site certification, final test, and up to a 2" mechanical gas valve. Permit fees required by local authorities for fire suppression system inspection, PERMIT PRICE GOOD FOR 30 DAYS. Quote includes two trip charges - one for field installation and the second for final test with fire inspector. Any additional trips will require change order and extra payment. - Excludes: Union Labor & Prevailing Wage, Gas valve installed by plumbing contractor, all electrical parts & connections, hand held fire extinguisher(s), On-Site Re-piping due to equipment layout changes from approved Captive-Aire drawings & Pre-Inspection Fire System Test		
2	1 ea	HD RANGE, 36", 2 FRENCH PLATES, 24" GRIDDLE Lang Manufacturing Model No. R36B-ATA Heavy Duty Range, electric, 36", (1) 24" griddle, 1/2" thick plate, (2) 8" French plates, thermostatic controls, open cabinet base, stainless steel 2" vented stub back & exterior, 6" legs, 15.0 kW, cULus, NSF		
	1 ea	2 yr. parts & labor warranty, continental USA, Hawaii & Canada, standard		



Initial: _____

Item	Qty	Description	Sell	Sell Total
	1 ea	Voltage to be verified with jobsite		
	1 ea	6" Stainless steel adjustable Mounting options, standard If 480 Volt is needed.... There will be a \$150 up-charge. Sorry for any inconvenience this may cause.		
3	1 ea	FRYER Dean Industries Model No. SR114E Super Runner Value Fryer, electric, floor model, 40 lb. capacity, snap action thermostat, power switch, indicator light, includes: basket hanger & twin baskets, stainless steel frypot, front & door, aluminized sides, 6" adjustable steel legs, 14.0 kW, NSF, cULus, CE, TUV		
	1 ea	208v/60/3, 39.0 amps, 3 wire, no plug, standard		
	1 ea	Fryer: 6" adjustable steel legs, std.		
4.1	1 ea	WORK TABLE, 12"-18", STAINLESS STEEL TOP John Boos Model No. ST6R1.5-3015GSK-QUOTE 44438DE WORK TABLE, 12" - 18", STAINLESS STEEL TOP John Boos Model No. ST6R1.5-3015GSK Filler Table, 15"L x 30"W 16/300, with 1.5" raw riser, with a galvanized adjustable shelf		
5.1	1 ea	WORK TABLE John Boos Model No. ST6-3048SSK-X-QUOTE 44438DE Work Table, 48"W x 30"D, 16/300 stainless steel flat top with Stallion safety edge front & back, 90° turndown on sides, 18 gauge stainless steel adjustable undershelf, stainless steel legs & bullet feet, NSF, KD (FLYER)		
	1 ea	Standard flyer accessories only, NO modifications to flyer items allowed or their accessories		
6.1	1 ea	OVERSHELF John Boos Model No. OS-ED-1848-X-QUOTE 44438DE Economy Overshelf, double, 48"W x 18"D, adjustable lower shelf, square turndown edge, 18/430 stainless steel, NSF (FLYER)		
7.1	1 ea	WORK TABLE John Boos Model No. ST6-3036SSK-X Work Table, 36"W x 30"D, 16/300 stainless steel flat top with Stallion safety edge front & back, 90° turndown on sides, 18 gauge stainless steel adjustable undershelf, stainless steel legs & bullet feet, NSF, KD (FLYER)		
	1 ea	Standard flyer accessories only, NO modifications to flyer items allowed or their accessories		
8.1	1 ea	DISH CABINET John Boos Model No. DSC6-1872-QUOTE 44438DE John Boos Model No. DSC6-1872 Dish Cabinet, with modular cabinet open base 18/300, 72"W x 18"D x 35 1/2"H, 16/300 stainless steel construction, fixed mid-shelf, with 6" high Stainless Steel legs with bullet feet		
9	1 ea	WALL CABINET		

Initial: _____

Item	Qty	Description	Sell	Sell Total
		John Boos Model No. WCH-36-44438DE Cabinet, wall mount, enclosed design with hinged doors, 36" long with single intermediate shelf, stainless steel construction		
10	1 ea	FRENCH FRY WARMER Vollrath Model No. 71500 Cayenne® Heat Lamp - Model OHC-500, WHITE BULBS, Stainless U-Shaped base accepts full size pans, 19" W x 14" D x 28 3/4" H, one-piece cantilever hood, bulb height adjusts from 12" to 20", 120v/60/1-ph, 500 watts, 4.2 amp, NEMA 5-15P, ETL, UL, NSF, CSA, Made in U.S.A.		
				
11	1 ea	STEAM TABLE PAN Winco Model No. SPJH-102 Packed 12 ea Steam Table Pan, full size, 2-1/2" deep, 22 ga. heavy weight, 18/8 stainless steel, anti-jamming, NSF (6 each per inner case, 12 each per master case)		
				
	1 ea	PGW-1018 Wire Pan Grate, 10" x 18", full size (12 each per inner case, 48 each per master case)		
	1 ea	SMALL ORDER CHARGE Small Order Charge		
12.1	1 ea	SHELVING, WALL-MOUNTED John Boos Model No. BHS1248PR Shelf, wall mount, 12" W x 48" L, 18/304 stainless steel, with stainless steel pot rack bar & 1 stainless steel hook per foot, Stallion safety edge front, 1-1/2" turned up backsplash, NSF, KD		
				
	1 ea	0211D/SHELF 1-1/2" Wall Shelf turned up left & right end splash		
13.1A	1 ea	THREE (3) COMPARTMENT SINK John Boos Model No. E3S8-18-12T18-X E-Series Compartment Sink, (3) 18"W x 18" front-to-back x 12" deep compartments, (2) 18" drainboards, 10"H boxed backsplash with 2" return to wall at 45° & 1" tile edge, corners coved at 3/4" radius, bottom of bowl drain to 3-1/2" dia. die stamped opening, (1) set of faucet holes, 18/300 stainless steel, 1-5/8" OD galvanized legs & gussets, adjustable plastic bullet feet, NSF (FLYER)		
				
	1 ea	Standard flyer accessories only, NO modifications to flyer items allowed or their accessories		
13.1B	1 ea	FAUCET Krowne Metal Model No. 12-812L Krowne Commercial Series Faucet, splash-mounted, 8" centers, swing spout, 12" long, low lead compliant		
				
14	1 ea	REFRIGERATED MERCHANDISER Beverage Air Model No. LV38-1-W-LED LumaVue Refrigerated Merchandiser with LED lighting, reach-in, two-section, (2) sliding glass doors, 38 cu. ft. capacity, mechanical temperature controls, (5) adjustable wire shelves each section, interior LED lighting, hold open feature, white exterior, 1/3 hp, UL, cUL, UL-EPH, MADE IN USA, ENERGY STAR®		
	1 ea	3 years parts & labor warranty (excludes maintenance items)		

Initial: _____

Page 5 of 6

Item	Qty	Description	Sell	Sell Total
	1 ea	Additional 2 yr compressor warranty, standard		
	1 ea	115v/60/1-ph, 8.8 amps, 8' cord, NEMA 5-15P, standard		
	1 ea	61C11-049D-01 Lock Assembly Kit		
	2 ea	61C31-201A-01 Gravity shelf organizer (one kit per door), for LV38		
	1 ea	NOTE: Not for Cow Graphics but for all of the other graphics signs decals that they are available when ordered with unit, no charge		
15.1	1 ea	HAND SINK Krowne Metal Model No. HS-2L Hand Sink, wall mount, 16"W x 15"D x 14"H O.A., 20 gauge stainless steel construction, 14" wide x 10" front-to-back x 6" deep bowl, low-lead compliant splash mount gooseneck faucet, 1-1/2" drain, stainless steel construction, mounting bracket included, NSF		
15.2	1 ea	HAND SINK John Boos Model No. PBHS-W-1410-P-X Hand Sink, wall mount, 14"W x 10" front-to-back x 5" deep, faucet, all stainless steel construction (Splash Mount faucet included) (FLYER)		
			Total	\$22,374.

*** Excludes Taxes***

*** Includes Standard Drop Shipping***

Acceptance: _____ Date: _____

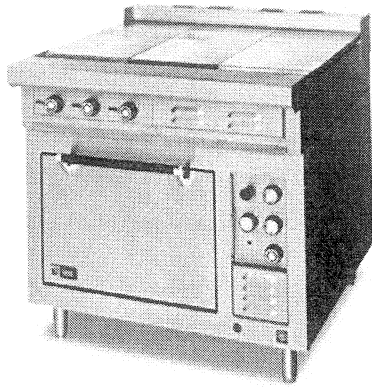
Printed Name: _____



Lang

Item No. _____
Project _____
Quantity _____

36" Electric Range With Standard Oven or Cabinet Base **Model: R36S Series**



Model R36S-ATB shown

OVEN BASE - SHORT/BID SPECIFICATION

Range with oven shall be a LANG Manufacturing Model R36S-

[Specify one]:

- ☐ -ATA, with 24" wide Griddle and 2 ea. 8" diameter French Plates;
- ☐ ATB, with 3 ea. 12" X 24" X 3/4" thick Hot Plates;
- ☐ ATC, with 2 ea. 8" diameter French Plates and 2ea. 12" X 24" X 3/4" thick Hot Plates; or
- ☐ -ATD, with 36" wide Griddle;
- ☐ ATE, with 6 ea. 8" diameter French Plates;
- ☐ ATF, with 12"x24"x3/4" wide hot plate and 4 ea. 8" diameter French Plates

...a 36" wide heavy duty electric heated unit with standard oven base and 21-kW total power input; all stainless steel exterior; fully insulated oven with aluminized steel interior, heavy duty drop-down door and one chrome plated oven rack standard; individual oven and cook-top component controls; plus all the features listed and options/accessories checked:

CABINET BASE - SHORT/BID SPECIFICATION

Range on cabinet base shall be a LANG Manufacturing Model R36S-___ [Specify one]:

- ☐ -ATA, with 24" wide griddle & 2 ea. 8" diameter French Plates;
- ☐ -ATB, with 3 ea. 12" X 24" X 3/4" thick Hot Plates; or
- ☐ -ATC, with 2 ea. 8" diameter French Plates and 2 ea. 12" X 24" X 3/4" thick Hot Plates
- ☐ -ATD, with 36" wide Griddle;
- ☐ -ATE, with 6 ea. 8" diameter French Plates;

...a 36" wide heavy duty electric heated unit with 15-kW total power input; all stainless steel exterior with enclosed cabinet base for storage, individual cook-top component controls; plus all the features listed and options/accessories checked:

STANDARD PRODUCT WARRANTY

Two year, parts & labor

CONSTRUCTION FEATURES

- One piece heavy duty 430 Series stainless steel exterior, with attractive No. 4 finish
- 6" adjustable legs standard
- Full width 2" high range-top back riser
- 3" wide full width front grease trough
- 6" wide full width plate landing
- Grease drain in trough with full width & depth spillage drawers
- Griddle Configurations include a one piece splash guard, back & sides

[Oven Models Only]:

- 12" high cooking compartment is aluminized steel
- Oven is insulated on six sides
- Heavy duty hinge-down oven door
- Adjustable oven rack slide supports
- One chrome-plated oven rack provided

PERFORMANCE FEATURES

- 2-piece unit fits through 36" wide door
- Choice of cook top configurations, to include:
 - ☐ 24" wide 3/4" thick Griddle & 2 ea. 8" diameter French Plates
 - ☐ 36" wide 3/4" thick Griddle
 - ☐ 3 ea. 12" wide Hot Tops
 - ☐ 6 ea. 8" diameter French Plates
 - ☐ 2 ea. 8" diameter French Plates & 2 ea. 12" wide Hot Tops
 - ☐ 12" wide 3/4" thick Griddle & 4 ea. 8" diameter French Plates
- [Oven base model only]
- Full front grease trough, grease drain & spillage drawers speed cleanup
- Full front landing simplifies and speeds plating
- Separate, independent controls allows simultaneous multi-function cooking

CONTROLS [Varies By Top Configuration]

- ☐ [R36S-ATA & R36B-ATA] Two thermostats, one per 12" of Griddle & two 6-heat level switches [ea. French Plate]
- ☐ [R36S-ATD & R36B-ATD] Three thermostats, one per 12" of Griddle
- ☐ [R36S-ATB & R36B-ATB] Three thermostats [ea. Hot Top]
- ☐ [R36S-ATE & R36B-ATE] Six 6-heat level switches [ea. French Plate]
- ☐ [R36S-ATC & R36B-ATC] Two thermostats [ea. Hot Top] & two 6-heat level switches [ea. French Plate]
- ☐ [R36S-ATF] One thermostat for Griddle & four 6-heat level switches [ea. French Plate]

[Oven Models Only]:

- Oven Thermostat
- Two, 3-heat switches for oven
- 60 minute timer



Sheet No. LSP-R4 (rev. 02/12)

36" Electric Range With Standard Oven or Cabinet Base Model: R36S Series

CONFIGURATION GUIDE

Model Has:	R36S-ATA	R36B-ATA	R36S-ATB	R36B-ATB	R36S-ATC	R36B-ATC	R36S-ATD	R36B-ATD	R36S-ATE	R36B-ATE	R36B-ATF
Unit Base:	Std. Oven	Cabinet	Std. Oven	Cabinet	Std. Oven	Cabinet	Std. Oven	Cabinet	Std. Oven	Cabinet	Std. Oven
Griddle:	24" wide		-		-		36" wide		-		12" wide
French Plates:	2 each		-		2 each		-		6 each		4 each
Hot Plates:	-		3 each		2 each		-		-		-
Pictogram: [Unit Top View]											

INSTALLATION REQUIREMENTS

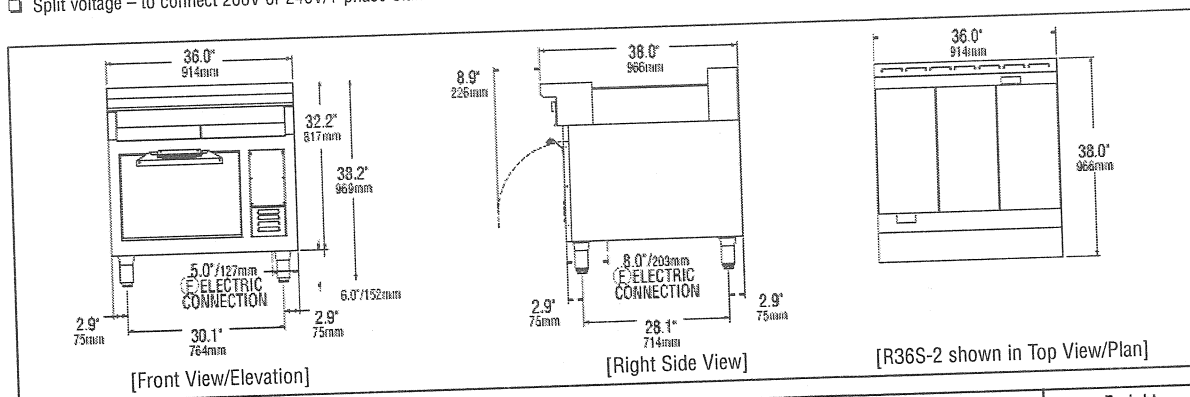
- Unit is shipped in two pieces, cook top & oven base
- ⓔ Single 208/240V, 1/ 3-Phase; or 480V, 3-phase electrical connection

- Installation under approved vent hood required. Consult local codes.
[Power connection from bottom. See below]

OPTIONS & ACCESSORIES

- ☐ Substitute 1" thick griddle plate for grooving [12" wide]
- ☐ Substitute 1" thick griddle plate for grooving [24" wide]
- ☐ Substitute 1" thick griddle plate for grooving [36" wide]
- ☐ Grooving on [1" thick ONLY] Range Griddle Plate
- ☐ Clamshell Hood installed over griddle on 36" Series Range
- ☐ Split voltage – to connect 208V or 240V/1-phase Clamshell to 480V Range

- ☐ Substitute Open Coil Units for French Plates [208/240V ONLY]
- ☐ 480 Volt, 3-phase model
- ☐ Set of 6" casters, two-locking, two fixed
- ☐ High Storage Rack [for mounting above any 36" Range]
- ☐ Extra wire pan rack [One provided as std.]
- ☐ 6" or 12" wide Top Spreader and Front Enclosure



Model	Height x Width x Depth (With standard legs)	Clearance from combustible surface	Weight		Freight Class
			Actual	Shipping	
R36S	38.2" x 36.0" x 38.0" 970mm x 914mm x 966mm	Sides: 4" (100mm) Back: 4" (100mm)	235-490* lbs. 107-223 kg	285-540* lbs. 130-245 kg	85

* Depending on configuration.

Model	ⓔ Electrical Requirements						
	Voltage	Total kW		Phase		Amps/Line	
		Oven	Top	Oven	Top	Oven	Top
R36S	Unit Base Type:						
	208V/60Hz	21.0	15.0	1	1	101.0	72.1
	240V/60Hz	21.0	15.0	1	1	87.5	62.5
	208V/60Hz	21.0	15.0	3	3	66.7	41.7
	240V/60Hz	21.0	15.0	3	3	57.8	36.1
	480V/60Hz	21.0	15.0	3	3	28.9	18.1

CAD SYMBOLS & PRICING



AutoQuotes

Due to continuous improvements, specifications subject to change without notice.



LANG MANUFACTURING • 10 SUNNEN DR. ST. LOUIS, MO 63143
PHONE: 314-678-6315 • FAX: 314-781-3636 • www.langworld.com



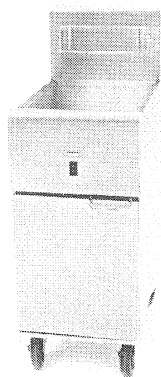
SR14E Super Runner Value Electric Fryer

Project _____
Item _____
Quantity _____
CSI Section 11400 _____
Approval _____
Date _____

SR14E Super Runner Value Electric Fryer

Models

☐ SR14E



SR14E
Shown with optional casters.

Standard Features

- 40-lb (20 liter) frypot oil capacity
- 14 kw
- Frying area 13-3/4" x 13-3/4" x 5-1/4" (34.8 x 34.8 x 13.3 cm)
- Durable temperature probe
- Wide cold zone
- Stainless steel frypot, door and back-splash/flue cover, aluminized sides
- Wire form basket hanger
- Two twin baskets
- Power switch and indicator light
- 6" (15 cm) steel legs with 1" adjustment

Options & Accessories

- ☐ Frypot cover
- ☐ Casters

Specifications

Basic Frying At Its Best -- Designed For All-Purpose Affordable Frying

Fry a wide variety of products with the full-size frying area which easily accommodates items from appetizers to specialty foods -- chicken, fries and breaded products, fresh or frozen.

Make the most of your energy dollars with our fully submersed element package. Heat absorption is maximized by full contact with the oil, allowing quick heat-up time and lower energy consumption per pound of product cooked.

Dean's wide cool zone design minimizes wasteful oil deterioration by trapping debris under the cooking area, preventing carbonization of particles and oil contamination. The sloped bottom permits fast, easy draining of oil and sediment.

Assure rapid recovery with Dean's durable temperature probe which reacts quickly to changes in load conditions and helps eliminate loss of time incurred waiting between loads.

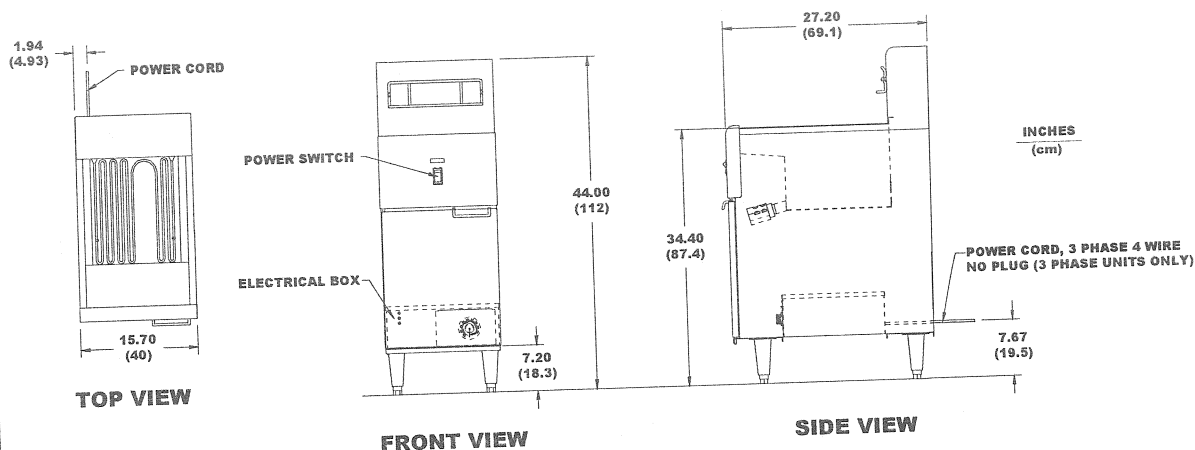


5489 Campus Drive
Shreveport, LA 71129
USA

Tel: 318-865-1711
Tel: 1-800-221-4583
Fax: 318-868-5987
E-mail: info@frymaster.com

www.frymaster.com
Bulletin No. 830-0083
Revised 6/11/13





DIMENSIONS

MODEL	OIL CAPACITY	OVERALL SIZE (cm)			DRAIN HEIGHT (cm)	APPROXIMATE SHIPPING DIMENSIONS					
		WIDTH	DEPTH	HEIGHT		WEIGHT	CLASS	CU. FT.	DIMENSIONS (cm)		
SR14E	40 lb. (20 liter)	15-3/4" (40)	27-1/4" (69.1)	44" (112)	23" (58.4)	180 lbs. (82 kg)	85	21	W 20-1/2" (52)	D 36" (91)	H 48-1/2" (123)

POWER REQUIREMENTS

BASIC DOMESTIC	kw	ELEMENTS/FRYPOT		
		VOLTAGE	3 PHASE*	1 PHASE**
SR14E	14	208V 240V	39 A 34 A	68 A 59 A
BASIC EXPORT	kw			
		VOLTAGE	3 PHASE*	1 PHASE**
SR14E	14	220V 230V/400V	37 A 21 A	64 A N/A

*3 PH/3 Wire/Plus Ground Wire
**1 PH/2 Wire/Plus Ground Wire

HOW TO SPECIFY

The following description will assist with ordering the features desired for this equipment:

SR14E 40-lb (20-liter) oil capacity, 14 kw electric fryer with power switch and indicator light.

NOTE:

- 3-phase units with cord only -- no plug provided.
- 1-phase units to be field wired, no cord or plug provided.
- All Canadian and single phase units sold without cordset.

5489 Campus Drive
Shreveport, LA 71129
USA

Tel: 318-865-1711
Tel: 1-800-221-4583
Fax: 318-868-5987
E-mail: info@frymaster.com

www.frymaster.com
Bulletin No. 830-0083
Revised 6/11/13
Litho in U.S.A. ©Frymaster





"ST6-SSK" Stainless Steel Top Work Tables

w/ 16 Gauge Stainless Steel Work Top
w/ Stainless Steel Base & Adjustable Undershef



Item #	_____	Qty	_____
Model #	_____		
Project	_____		

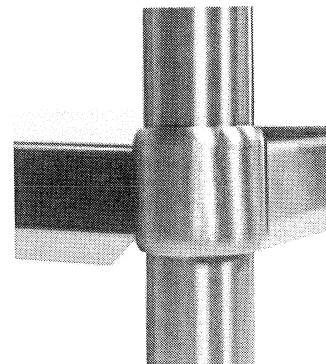
AUTOQUOTES



16 GAUGE TOP w/ ADJUSTABLE UNDERSHELF					
24"WIDE	Qty	30"WIDE	Qty	36"WIDE	Qty
ST6-2430SSK		ST6-3030SSK			
ST6-2436SSK		ST6-3036SSK		ST6-3636SSK	
ST6-2448SSK		ST6-3048SSK		ST6-3648SSK	
ST6-2460SSK		ST6-3060SSK		ST6-3660SSK	
ST6-2472SSK		ST6-3072SSK		ST6-3672SSK	
ST6-2484SSK		ST6-3084SSK		ST6-3684SSK	
ST6-2496SSK		ST6-3096SSK		ST6-3696SSK	
ST6-24108SSK		ST6-30108SSK		ST6-36108SSK	
ST6-24120SSK		ST6-30120SSK		ST6-36120SSK	

FEATURES:

- * 16 Gauge Stainless Steel Top
Type 300 stainless steel with # 4 polish, satin finish
- * Top is **Sound Deadened**
- * Reinforced with 1"x2" channel running entire length of table
- * 1 1/2" **Stallion Edge** on front and rear with side edges 90 degree bend down for table line-up
- * Stainless Steel Base with **Adjustable** Undershef
- * Adjustable bullet feet
- * Shipped knocked-down, easy - to - assemble
- * NSF Approved



CONSTRUCTION:

Top: Stainless Steel Tops are TIG welded, Exposed welds are polished to match adjacent surface.

MATERIAL:

Top: 16 gauge stainless steel
Type 300 stainless steel with # 4 polish, satin finish

Shelf: 18 gauge stainless steel
** 36" Wide Tables, 16 Gauge Lower Shelf

Legs: 1 5/8" Round O.D., 16 gauge tubular stainless steel

Gussets: Stainless Steel

Feet: 1" adjustable stainless steel bullet feet

OPTIONAL ACCESSORIES

	MODEL #	Qty
DRAWER		
DRAWER LOCK		
CASTERS		
OVERSHELVES		
SINKS		
POT RACK		

John Boos & Co

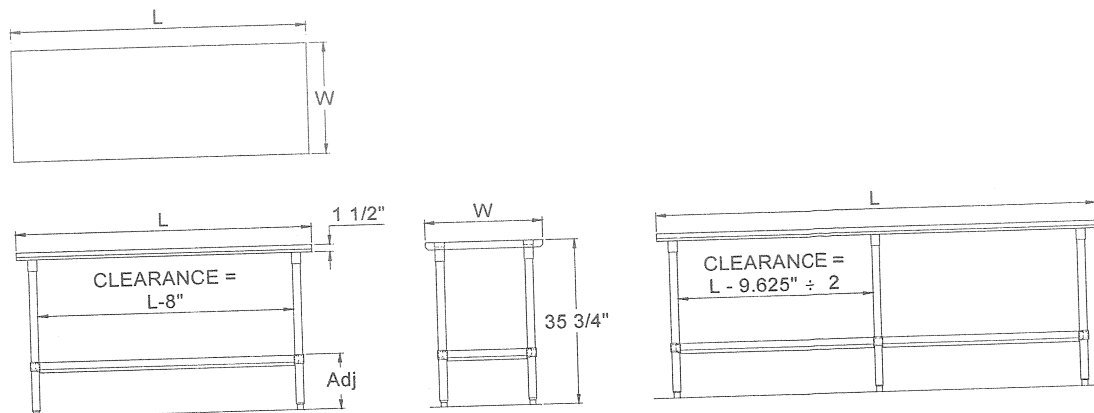
3601 S. Banker Street - Effingham, IL 62401

Phone: 217-347-7701 - Fax: 217-347-7705

Email: sales@johnboos.com - Web-site: www.johnboos.com

FF-1

DETAILED SPECIFICATIONS



All units ship unassembled for reduced shipping cost.
Units 7 ft. and larger are furnished with six legs.
All dimensions are typical.
Tolerance +/- .500".

Finished size of undershelf.
Shelf length = length minus 4.875"
Shelf width = width minus 4.25"

16 GAUGE TOP & UNDERSHELF

L	24" WIDE	WT.	30" WIDE	WT.	36" WIDE	WT.
30	ST6-2430SSK	44	ST6-3030SSK	56	-	-
36	ST6-2436SSK	52	ST6-3036SSK	59	ST6-3636SSK	75
48	ST6-2448SSK	64	ST6-3048SSK	76	ST6-3648SSK	82
60	ST6-2460SSK	76	ST6-3060SSK	92	ST6-3660SSK	98
72	ST6-2472SSK	97	ST6-3072SSK	111	ST6-3672SSK	144
84	ST6-2484SSK	108	ST6-3084SSK	125	ST6-3684SSK	135
96	ST6-2496SSK	118	ST6-3096SSK	139	ST6-3696SSK	155
108	ST6-24108SSK	130	ST6-30108SSK	153	ST6-36108SSK	171
120	ST6-24120SSK	142	ST6-30120SSK	167	ST6-36120SSK	187

30 = Width of Work Surface
6 = 16 ga. Work Surface
ST = Stainless Steel Top

120 = Length of Work Surface
SS = Stainless Legs & Shelf
K = K.D. w/ Adjustable Shelf

ST6-30120SSK

John Boos & Co

3601 S. Banker Str - Effingham, IL 62401 Phone: 217-347-7701 - Fax: 217-347-7705
Email: sales@johnboos.com - Web-site: www.johnboos.com



July 2013

John Boos is constantly engaged in a program of improving products and therefore reserves the right to change specification without prior notice



"ST6-SSK" Stainless Steel Top Work Tables

w/ 16 Gauge Stainless Steel Work Top
w/ Stainless Steel Base & Adjustable Underself



Item #	_____	Qty	_____
Model #	_____		
Project	_____		

AUTOQUOTES



16 GAUGE TOP w/ ADJUSTABLE UNDERSHELF					
24"WIDE	Qty	30"WIDE	Qty	36"WIDE	Qty
ST6-2430SSK		ST6-3030SSK			
ST6-2436SSK		ST6-3036SSK		ST6-3636SSK	
ST6-2448SSK		ST6-3048SSK		ST6-3648SSK	
ST6-2460SSK		ST6-3060SSK		ST6-3660SSK	
ST6-2472SSK		ST6-3072SSK		ST6-3672SSK	
ST6-2484SSK		ST6-3084SSK		ST6-3684SSK	
ST6-2496SSK		ST6-3096SSK		ST6-3696SSK	
ST6-24108SSK		ST6-30108SSK		ST6-36108SSK	
ST6-24120SSK		ST6-30120SSK		ST6-36120SSK	

FEATURES:

- * 16 Gauge Stainless Steel Top
Type 300 stainless steel with # 4 polish, satin finish
- * Top is **Sound Deadened**
- * Reinforced with 1"x2" channel running entire length of table
- * 1 1/2" **Stallion Edge** on front and rear with side edges 90 degree bend down for table line-up
- * Stainless Steel Base with **Adjustable** Underself
- * Adjustable bullet feet
- * Shipped knocked-down, easy - to - assemble
- * NSF Approved

CONSTRUCTION:

Top: Stainless Steel Tops are TIG welded, Exposed welds are polished to match adjacent surface.

MATERIAL:

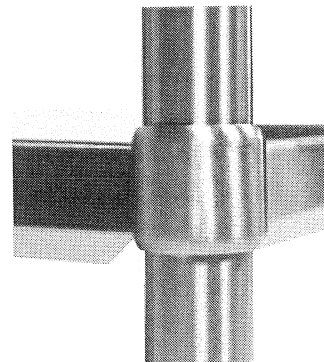
Top: 16 gauge stainless steel
Type 300 stainless steel with # 4 polish, satin finish

Shelf: 18 gauge stainless steel
** 36" Wide Tables, 16 Gauge Lower Shelf

Legs: 1 5/8" Round O.D., 16 gauge tubular stainless steel

Gussets: Stainless Steel

Feet: 1" adjustable stainless steel bullet feet



OPTIONAL ACCESSORIES

	MODEL #	Qty
DRAWER		
DRAWER LOCK		
CASTERS		
OVERSHELVES		
SINKS		
POT RACK		

John Boos & Co

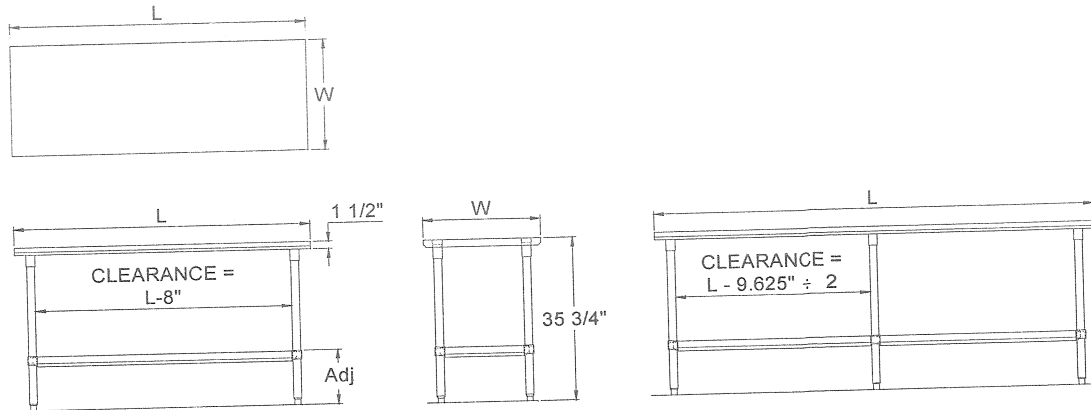
3601 S. Banker Street - Effingham, IL 62401

Phone: 217-347-7701 - Fax: 217-347-7705

Email: sales@johnboos.com - Web-site: www.johnboos.com

FF-1

DETAILED SPECIFICATIONS



All units ship unassembled for reduced shipping cost.
Units 7 ft. and larger are furnished with six legs.
All dimensions are typical.
Tolerance +/- .500".

Finished size of undershelf.
Shelf length = length minus 4.875"
Shelf width = width minus 4.25"

16 GAUGE TOP & UNDERSHELF

L	24" WIDE	WT.	30" WIDE	WT.	36" WIDE	WT.
30	ST6-2430SSK	44	ST6-3030SSK	56	-	-
36	ST6-2436SSK	52	ST6-3036SSK	59	ST6-3636SSK	75
48	ST6-2448SSK	64	ST6-3048SSK	76	ST6-3648SSK	82
60	ST6-2460SSK	76	ST6-3060SSK	92	ST6-3660SSK	98
72	ST6-2472SSK	97	ST6-3072SSK	111	ST6-3672SSK	144
84	ST6-2484SSK	108	ST6-3084SSK	125	ST6-3684SSK	135
96	ST6-2496SSK	118	ST6-3096SSK	139	ST6-3696SSK	155
108	ST6-24108SSK	130	ST6-30108SSK	153	ST6-36108SSK	171
120	ST6-24120SSK	142	ST6-30120SSK	167	ST6-36120SSK	187

30 = Width of Work Surface
6 = 16 ga. Work Surface
ST = Stainless Steel Top

120 = Length of Work Surface
SS = Stainless Legs & Shelf
K = K.D. w/ Adjustable Shelf

ST6-30120SSK

John Boos & Co

3601 S. Banker Str - Effingham, IL 62401 Phone: 217-347-7701 - Fax: 217-347-7705
Email: sales@johnboos.com - Web-site: www.johnboos.com



July 2013

John Boos is constantly engaged in a program of improving products and therefore reserves the right to change specification without prior notice



Outperform every day.™

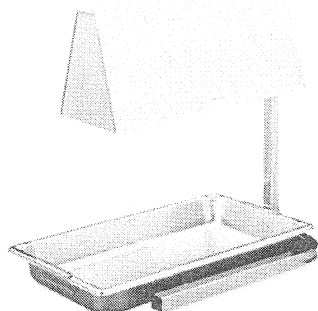
Project:

Item Number:

Quantity:

Cayenne® OHC-500 Heat Lamp

CAYENNE® OHC-500 HEAT LAMP



Cayenne® OHC-500 Heat Lamp

DESCRIPTION

Twin bulb overhead lamp with cord-mounted ON-OFF switch. Unit has one-piece cantilever hood for improved heat pattern. Hood adjusts 8" (20.3 cm) up and down. Unit is provided with chrome plated tubular support frame to accept standard 12" x 20" (30.5 x 50.8 cm) steam table pans. Specify red or white 5000 hour bulbs.

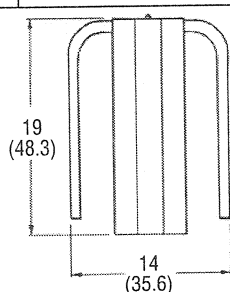
Agency Listings



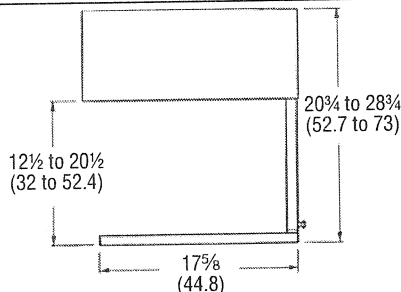
Due to continued product improvement, please consult www.vollrath.com for current product specifications.

DIMENSIONS AND RATINGS

Item	Description	Dimensions (L X W X H) IN (CM)	Voltage	Watts	Amps	Plug	Case Lot
71500	OHC-500 heat lamp – white bulbs	14 x 19 x 28¾ (35.6 x 48.3 x 73)	120V AC	500	4.2	NEMA 5-15P	1
72500	OHC-500 heat lamp – red bulbs	19 x 14 x 28¾ (48.3 x 35.6 x 73)	120V AC	500	4.2	NEMA 5-15P	1
72242	White infrared bulb, 250W, 120V						12
72241	Red infrared bulb, 250W, 120V						12



Top View



Side View

MODELS

71500 OHC-500 Heat Lamp with White Bulbs

72500 OHC-500 Heat Lamp with Red Bulbs

FEATURES

- Stainless steel hood directs heat evenly over 12" x 20" (30.5 x 50.8 cm) area
- Chrome-plated legs and uprights
- Adjustable height lamp assembly – minimum 12½" to 20½" (31.8 to 52 cm) above countertop
- 5-ft. (152 cm) cord and plug with on/off switch
- Wide base assembly will hold standard 12" x 20" (30.5 x 50.8 cm) pan or Vollrath 71001 warmer
- Non-skid feet for firm placement on countertop
- Pan not included

WARRANTY: All models shown come with Vollrath's standard warranty against defects in materials and workmanship. For full warranty details, please refer to www.Vollrath.com.

Approvals

Date

Receptacle

120V



NEMA
5-15R

The Vollrath Company, L.L.C.



Outperform every day.™

www.vollrath.com

The Vollrath Company, L.L.C.
1236 North 18th Street
Sheboygan, WI 53081-3201 U.S.A.
Customer Service: 800.628.0830
Canada Customer Service: 800.695.8560
Main Fax: 800.752.5620 or

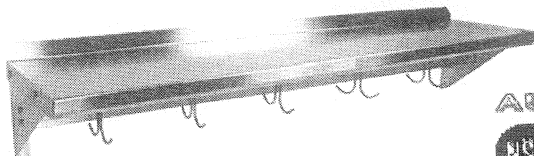
© 2014 The Vollrath Company L.L.C.

Technical Services: 800.628.0832
Technical Services Fax:
920.459.5462

Form Number L35550 6/25/14
Printed in USA



"BHS" Stainless Steel Wall Shelves



AUTOQUOTES



STAINLESS STEEL WALL SHELVES

18 Gauge	16 Gauge	14 Gauge
BHS1224PR	BHS1224PR-16/304	BHS1224PR-14/304
BHS1236PR	BHS1236PR-16/304	BHS1236PR-14/304
BHS1248PR	BHS1248PR-16/304	BHS1248PR-14/304
BHS1260PR	BHS1260PR-16/304	BHS1260PR-14/304
* BHS1272PR	BHS1272PR-16/304	BHS1272PR-14/304
* BHS1284PR	* BHS1284PR-16/304	* BHS1284PR-14/304
* BHS1296PR	* BHS1296PR-16/304	* BHS1296PR-14/304
* BHS12108PR	* BHS12108PR-16/304	* BHS12108PR-14/304
* BHS12120PR	* BHS12120PR-16/304	* BHS12120PR-14/304
* BHS12132PR	* BHS12132PR-16/304	* BHS12132PR-14/304
* BHS12144PR	* BHS12144PR-16/304	* BHS12144PR-14/304

STAINLESS STEEL WALL SHELVES

18 Gauge	16 Gauge	14 Gauge
BHS1624PR	BHS1624PR-16/304	BHS1624PR-14/304
BHS1636PR	BHS1636PR-16/304	BHS1636PR-14/304
BHS1648PR	BHS1648PR-16/304	BHS1648PR-14/304
BHS1660PR	BHS1660PR-16/304	BHS1660PR-14/304
* BHS1672PR	BHS1672PR-16/304	BHS1672PR-14/304
* BHS1684PR	* BHS1684PR-16/304	* BHS1684PR-14/304
* BHS1696PR	* BHS1696PR-16/304	* BHS1696PR-14/304
* BHS16108PR	* BHS16108PR-16/304	* BHS16108PR-14/304
* BHS16120PR	* BHS16120PR-16/304	* BHS16120PR-14/304
* BHS16132PR	* BHS16132PR-16/304	* BHS16132PR-14/304
* BHS16144PR	* BHS16144PR-16/304	* BHS16144PR-14/304

FEATURES:

- * Type 300 stainless steel with # 4 polish, satin finish
- * Finished with a **Safety** Stallion Front Edge
- * 1 1/2" Turned up Backsplash, 12" or 16" depth
- * Shipped knocked-down, easy - to - assemble **Most Ship UPS**
- * Optional stainless steel **Pot Rack Bar**
- * All models are approved by the National Sanitation Foundation

* (ASTERISK) denotes 3 support brackets

CONSTRUCTION:

- * Stainless Steel Shelves are TIG welded
- * Exposed welds polished to match adjacent surface

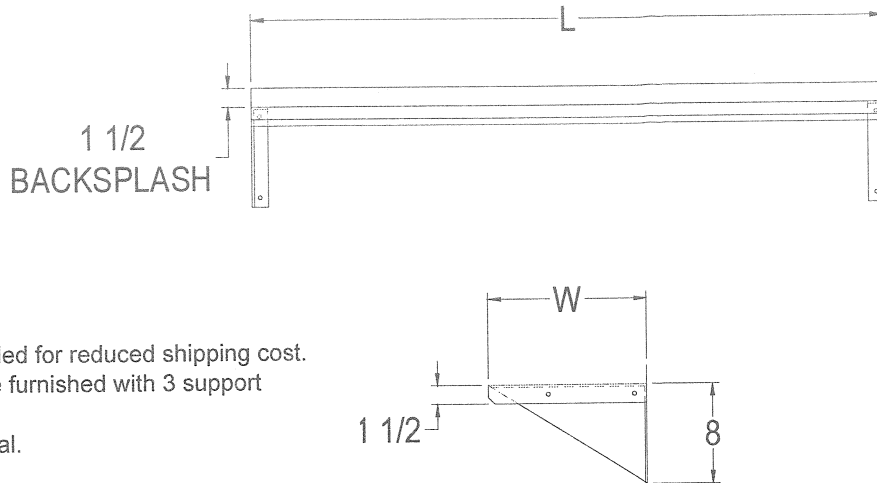
MATERIAL:

Shelf: Type 300 s.s. # 4 polish, satin finish.
Brackets: Type 300 s.s. # 4 polish, satin finish.

John Boos & Co

3601 S. Banker Street - Effingham, IL 62401
Phone: 217-347-7701 - Fax: 217-347-7705
Email: sales@johnboos.com - Web-site www. johnboos.com

DETAILED SPECIFICATIONS



All units ship unassembled for reduced shipping cost.
 Units 6 ft. and larger are furnished with 3 support brackets
 All dimensions are typical.
 Tolerance +/- .500".

12" WIDE ** STAINLESS STEEL WALL SHELVES

L	18 GAUGE	WT	16 GAUGE	WT	14 GAUGE	WT
24"	BHS1224PR	9	BHS1224PR-16/304	12	BHS1224PR-14/304	16
36"	BHS1236PR	12	BHS1236PR-16/304	15	BHS1236PR-14/304	20
48"	BHS1248PR	16	BHS1248PR-16/304	18	BHS1248PR-14/304	24
60"	BHS1260PR	21	BHS1260PR-16/304	21	BHS1260PR-14/304	27
72"	BHS1272PR	25	BHS1272PR-16/304	24	BHS1272PR-14/304	30
84"	BHS1284PR	29	BHS1284PR-16/304	30	BHS1284PR-14/304	35
96"	BHS1296PR	33	BHS1296PR-16/304	34	BHS1296PR-14/304	40
108"	BHS12108PR	36	BHS12108PR-16/304	38	BHS12108PR-14/304	45
120"	BHS12120PR	39	BHS12120PR-16/304	43	BHS12120PR-14/304	49
132"	BHS12132PR	43	BHS12132PR-16/304	48	BHS12132PR-14/304	53
144"	BHS12144PR	46	BHS12144PR-16/304	52	BHS12144PR-14/304	57

16" WIDE ** STAINLESS STEEL WALL SHELVES

L	18 GAUGE	WT	16 GAUGE	WT	14 GAUGE	WT
24"	BHS1624PR	10	BHS1624PR-16/304	14	BHS1624PR-14/304	17
36"	BHS1636PR	14	BHS1636PR-16/304	17	BHS1636PR-14/304	23
48"	BHS1648PR	18	BHS1648PR-16/304	21	BHS1648PR-14/304	28
60"	BHS1660PR	24	BHS1660PR-16/304	26	BHS1660PR-14/304	33
72"	BHS1672PR	30	BHS1672PR-16/304	30	BHS1672PR-14/304	38
84"	BHS1684PR	34	BHS1684PR-16/304	36	BHS1684PR-14/304	45
96"	BHS1696PR	38	BHS1696PR-16/304	40	BHS1696PR-14/304	50
108"	BHS16108PR	43	BHS16108PR-16/304	44	BHS16108PR-14/304	55
120"	BHS16120PR	48	BHS16120PR-16/304	48	BHS16120PR-14/304	60
132"	BHS16132PR	53	BHS16132PR-16/304	52	BHS16132PR-14/304	65
144"	BHS16144PR	58	BHS16144PR-16/304	56	BHS16144PR-14/304	70

John Boos & Co

3601 S. Banker Str - Effingham, IL 62401 Phone: 217-347-7701 - Fax: 217-347-7705
 Email: sales@johnboos.com - Web-site: www.johnboos.com



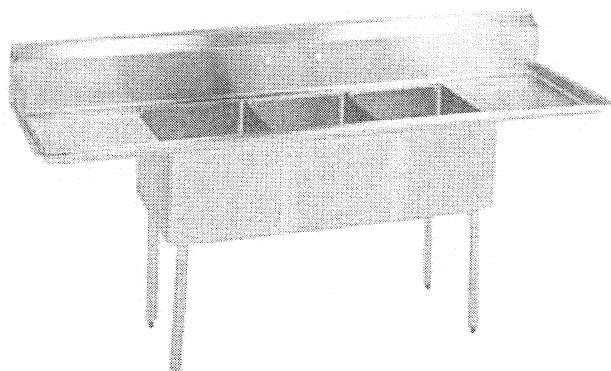
July 2013

John Boos is constantly engaged in a program of improving products and therefore reserves the right to change specification without prior notice



"E3S8-2DB" "E" Series Sinks

Three Compartment Sinks w/ 2 Drainboard
w/ Galvanized legs



AUTOQUOTES



STANDARD: 18 ga. 300 S/S welded Bowls
18 ga. 300 S/S sides and Splash
10" Back Splash

FEATURES:

- * Standard 18 Gauge Type 300 stainless steel with # 4 polish, satin finish
- * 12" & 14" Deep Bowls
- * All Corners, both vertical and horizontal, coved at 3/4" radius
- * Bottoms of bowls formed for drainage to 3-1/2" diameter die stamped opening
- * Full length **10" High Boxed Backsplash**, with 2" return to wall at 45 degree and 1" tile edge
- * 1" Faucet Holes in Backsplash
- * All outside corners of assembly are Bullnosed to provide safe, clean and polished edge
- * Standard galvanizes legs 1-5/8" diameter
- * Legs located directly under sink bowls, providing increased stability and maximum weight support

12" DEEP	
18 Gauge	Qty
E3S8-1620-12T18	
E3S8-18-12T18	
E3S8-1416-12T12	

Bowl Sizes:

16" X 20"
18" X 18"

14" DEEP	
18 Gauge	Qty
E3S8-15-15T15	
E3S8-18-14T18	
E3S8-18-14T24	
E3S8-1824-14T18	
*E3S8-24-14T24	
E3S8-2030-14T24	

(*) w/ 2 sets of Faucet Holes

CONSTRUCTION:

Top: Stainless Steel Sinks are TIG welded, Exposed welds are polished to match adjacent surface.
Bases: Galvanized Base

MATERIAL:

Bowls & 18 gauge stainless Steel
Top: Type 300 stainless steel with # 4 polish, satin finish
Legs: 1 5/8" Round O.D., galvanized steel
Gussets: Galvanized
Feet: 1" adjustable plastic bullet feet

Bowl Sizes:

15" x 15"
18" X 18"
18" X 24"
24" X 24"
20" x 30"

10" DEEP	
18 Gauge	Qty
E3S8-1014-10T15	

Bowl Sizes:

10" X 14"

John Boos & Co

3601 S. Banker Street - Effingham, IL 62401

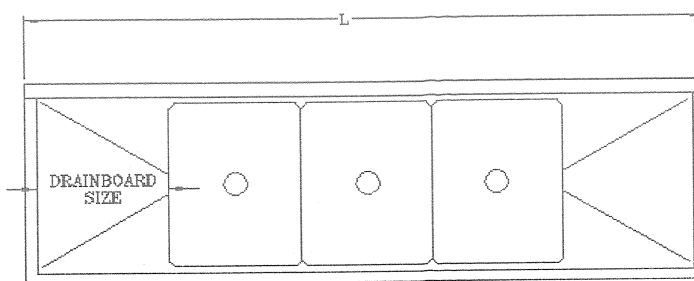
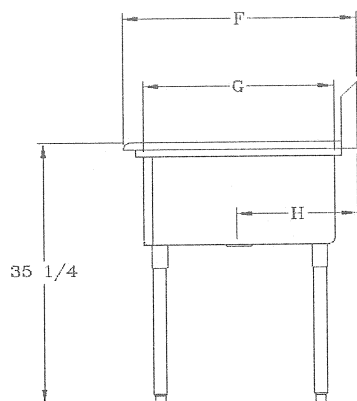
Phone: 217-347-7701 - Fax: 217-347-7705

Email: sales@johnboos.com - Web-site: www.johnboos.com

NN-17

DETAILED SPECIFICATIONS

BOWLS	F	G	H
10 X 14	19-7/8"	14"	10"
16 X 20	25-1/2"	20"	12-15/16"
18 X 18	23-1/2"	18"	11-15/16"
18 X 24	29-1/2"	24"	14-15/16"
24 X 24	29-1/2"	24"	14-15/16"

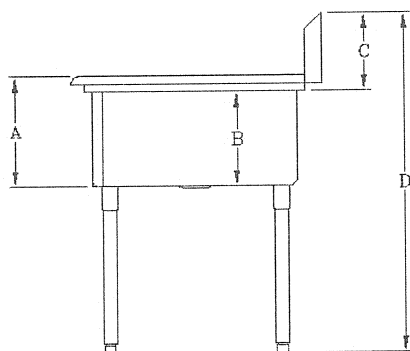


A	14-1/4"
B	12"
C	10"
D	43-3/4"

STANDARD 12" DEEP				
MODEL	BOWL SIZE	DIMENSIONS	DB	WT.
E3S8-1620-12T18	16 X 20 X 12	84" X 25-1/2"	18"	240
E3S8-18-12T18	18 X 18 X 12	90" X 23-1/2"	18"	240
E3S8-1416-12-T12	14 X 16 X 12	66" X 21.5"	12"	200

A	16-1/4"
B	14"
C	10"
D	43-3/4"

STANDARD 14" DEEP				
MODEL	BOWL SIZE	DIMENSIONS	DB	WT.
E3S8-15-14T15	15 x 15 x 14	75" x 20-1/2"	15"	231
E3S8-18-14T18	18 X 18 X 14	90" X 23-1/2"	18"	255
E3S8-18-14T24	18 X 18 X 14	102" X 29-1/2"	24"	265
E3S8-1824-14T24	18 X 24 X 14	104" X 29-1/2"	24"	288
E3S8-24-14T24	24 X 24 X 14	120" X 29-1/2"	24"	270
E3S8-2030-14T24	20" x 30" x 14	108" x 35.1/2"	24"	291



STANDARD 10" DEEP				
MODEL	BOWL SIZE	DIMENSIONS	DB	WT.
E3S8-18-14T18	18 X 18 X 14	84" X 23-1/2"	2"	
E3S8-1014-10T15	10 X 14 X 10	60" X 19-7/8"	15"	95

A	12"
B	10"
C	10"
D	39-3/4"

All dimensions are typical.

Tolerance +/- .500".

All units ship unassembled for reduced shipping cost.

John Boos & Co

3601 S. Banker Str - Effingham, IL 62401 Phone: 217-347-7701 - Fax: 217-347-7705

Email: sales@johnboos.com - Web-site: www.johnboos.com



July 2013

John Boos is constantly engaged in a program of improving products and therefore reserves the right to change specification without prior notice
NN-18

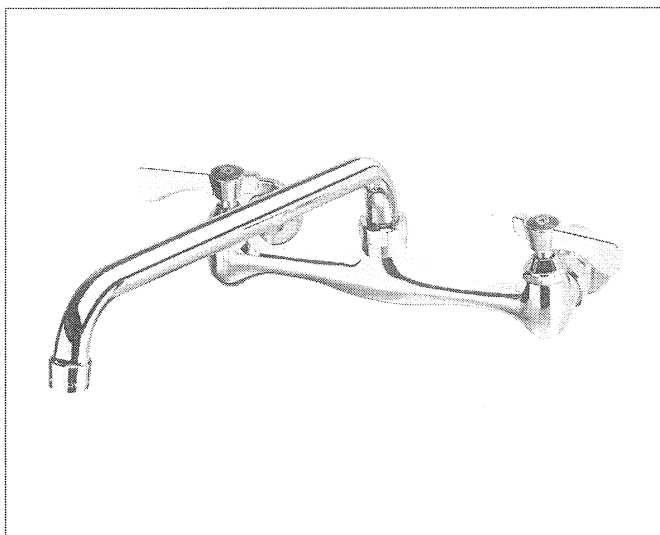


STANDARD SERIES PLUMBING

8" CENTER WALL MOUNT FAUCETS

MODEL: _____ PROJECT: _____ ITEM #: _____ QTY: _____

PRODUCT IMAGE



STANDARD FEATURES

- Mounting flanges with eccentric fittings for quick installations
- Heavy-Duty spout with double O-Ring construction and welded shoulder for durability
- High precision machining and polished nickel chromium finish
- Color-coded handles
- Optional wrist blade handles available
- Full replacement parts available
- **Low Lead Compliance**
"L" Models meet California AB-1953 and Vermont S152 standards
(Faucet models already listed with the "L" suffix (i.e. 12-806L) are only available in Low Lead Compliant model)

12-812 SHOWN

**ALSO AVAILABLE IN LOW LEAD BY
ADDING "L" TO MODEL NUMBER**

SPECIFICATIONS

- 8" on center wall mount with 1/2" NPT female inlets
- Rough in: Two 7/8" round holes on 8" centers
- Flow rate: 2 GPM max
- Shipping weight: 4 lbs.
- Quantity per case: 12



CERTIFICATIONS:

APPROVED BY:

Due to our commitment to continued product improvement, specifications are subject to change without notice.

Printed in the USA

Krowne Metal Corporation

100 Haul Rd. Wayne, NJ 07470 • Toll Free: (800) 631-0442 • Fax: (973) 872-1129
sales@krowne.com • www.krowne.com • www.facebook.com/KrowneMetal • www.twitter.com/KrowneMetal

Rev. 05/2012
No. 12-8XX



STANDARD SERIES PLUMBING

8" CENTER WALL MOUNT FAUCETS

MODEL: _____ PROJECT: _____ ITEM #: _____ QTY: _____

MODELS

STANDARD SPOUTS

Model Numbers	A	B	C
12-806L	6"	1 ⁷ / ₈ "	4 ³ / ₈ "
12-808	8"	1 ⁷ / ₈ "	4 ³ / ₈ "
12-810	10"	2 ¹ / ₈ "	4 ⁵ / ₈ "
12-812	12"	2 ⁵ / ₈ "	5 ¹ / ₈ "
12-814	14"	3"	5 ¹ / ₂ "
12-816	16"	4"	6 ¹ / ₂ "
12-818L*	18"	5"	7 ¹ / ₂ "
12-824L*	24"	5"	7 ¹ / ₂ "

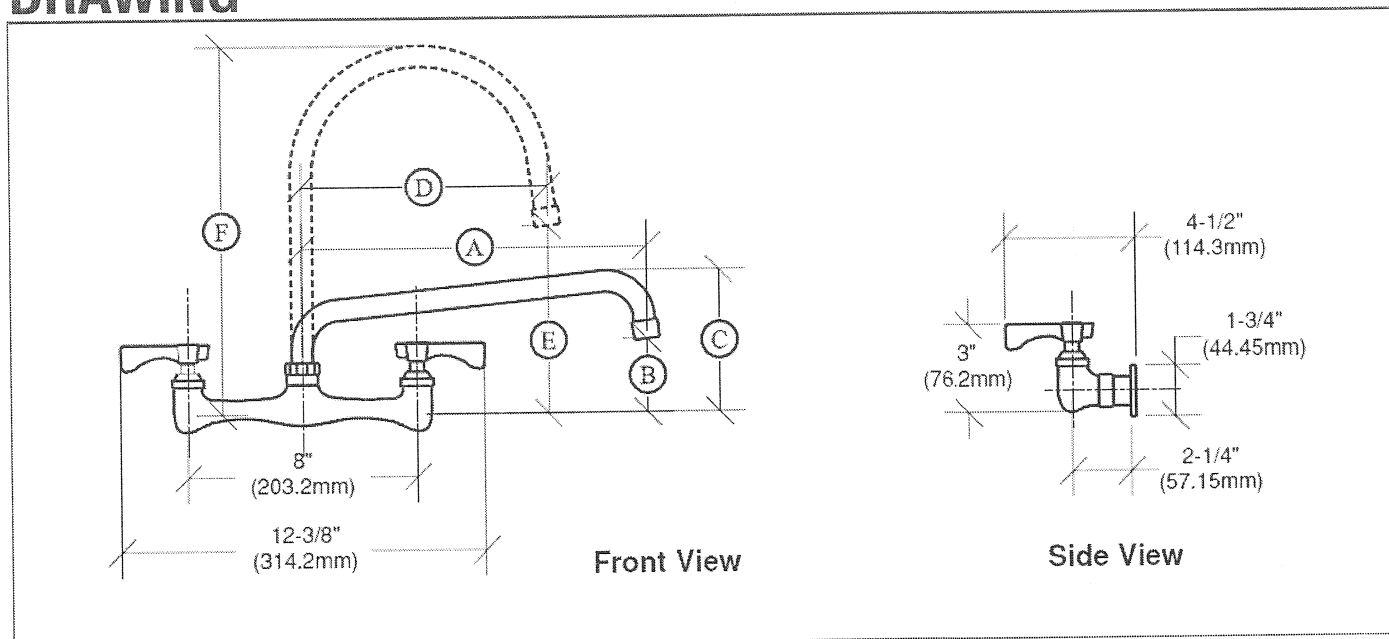
NOTE: Add "L" to end of Model Number for Low Lead Model

*Double Jointed Spouts

GOOSENECK SPOUTS

Model Numbers	D	E	F
12-801L	6"	5 ¹ / ₂ "	9 ¹ / ₂ "
12-802L	8 ¹ / ₂ "	7"	12 ³ / ₈ "

DRAWING



APPROVED BY:

CERTIFICATIONS:

Due to our commitment to continued product improvement, specifications are subject to change without notice.

Printed in the USA

Krowne Metal Corporation

100 Haul Rd. Wayne, NJ 07470 • Toll Free: (800) 631-0442 • Fax: (973) 872-1129

Rev. 05/2012

No. 12-8XX

sales@krowne.com • www.krowne.com • www.facebook.com/KrowneMetal • www.twitter.com/KrowneMetal



BEVERAGE-AIR

3779 Champion Blvd., Winston-Salem, NC 27105
1-888-845-9800 Fax# 1-336-245-6453
<http://www.Beverage-Air.com>

CUSTOMER'S CHOICE FOR A HOT LOCATION
Tested & Certified to Ambient Class of 100°F

3 Year Parts/Labor Warranty Additional 2 Year Compressor Warranty

LUMAVUE SERIES—GLASS DOOR MERCHANDISER
Used for merchandising and storage of product.

CABINET CONSTRUCTION

Heavy duty construction includes white coated steel interior walls. Exterior finish is heavy-duty steel with a baked on durable coating. Choose from black or white finish.

Foamed-in-place CFC and HCFC-free polyurethane insulation enhances the structural strength of the cabinet and helps increase energy efficiency.

Modern, one-piece grille is easily removed for cleaning and servicing.

Double pane, lowE argon filled glass doors feature inside and outside panes that are tempered for added safety.

Two sliding glass doors feature integral door handles that provide low profile and are more aesthetically pleasing. Hold-open feature is standard.

Five white epoxy coated steel shelves per door are standard.

Brightly lighted sign panel.

REFRIGERATION

Whisper-quiet refrigeration system uses R134a refrigerant, which is CFC and HCFC-free for compliance with environmental safety concerns.

Product temperatures from 32°F to 40°F.

ELECTRICAL

Interior fluorescent lighting enhances product illumination. Optional LED lighting provides hidden light source for increased product visibility. LED bulbs last up to 10 times longer compared to fluorescent bulbs and renders additional energy savings due to reduced wattage load on compressor.

Units wired at factory and ready for connection to a 115/60/1 phase, 15 amp dedicated outlet. 8' long cord and plug set included.

Item No. _____
Quantity _____

**SLIDING GLASS DOOR
LUMAVUE™
MERCHANDISER SERIES
LV38**

**MODEL:
LV38-1-B
LV38-1-W
LV38-1-B-LED
LV38-1-W-LED**



LV38-1-B (shown with 4 shelves per section)

SPECIAL FEATURES

- LV38 has earned the ENERGY STAR®
- Whisper-quiet refrigeration system
- Sliding glass doors
- Brightly lighted sign panel
- Optional LED lighting
- 2010 Federal Energy Compliant
- Gravity Flo kits and Can Roller options available

ELECTRICAL CONNECTION



115/60/1
NEMA-5-15P

Units pre-wired at
factory and include 8'
long cord and plug set.

Available From:



*Note: Not all mark-

ings may apply to all

Model Specified _____

Store# _____

Location _____

Quantity _____



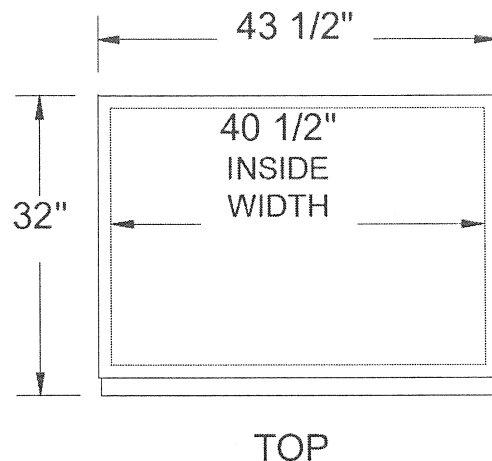
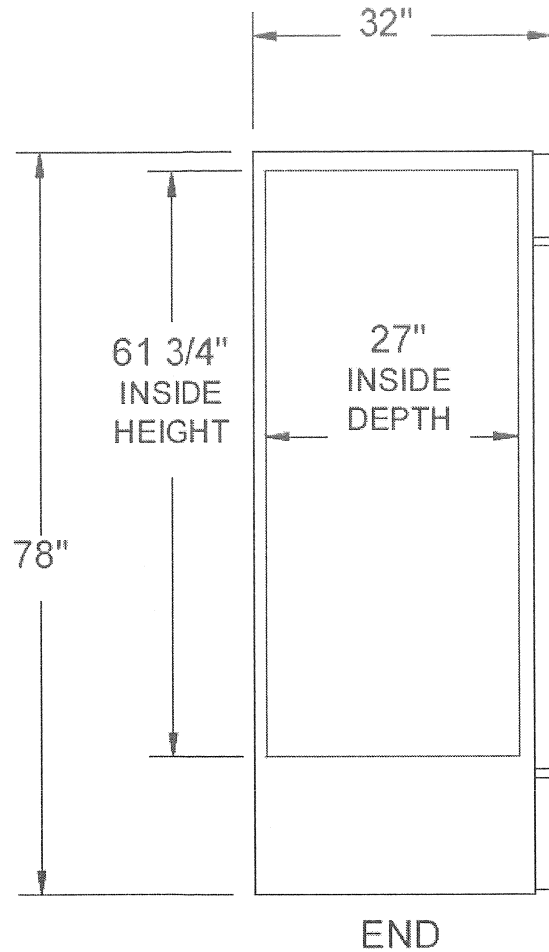
BEVERAGE-AIR

LumaVue Glass Door Merchandisers

Model: LV38

MODEL	LV38
EXTERNAL DIMENSIONAL DATA	
Length Overall (inches)	43 1/2"
Length Overall (mm)	1105
Depth Overall (inches)	32"
Depth Overall (mm)	813
Height Overall—(inches)	78"
Height Overall—(mm)	1981
Number of doors	2
INTERNAL DIMENSIONAL DATA	
NET Capacity (cubic ft.)	38
NET Capacity (Liters)	1037
Internal Length Overall (inches)	40 1/2"
Internal Length Overall (mm)	1029
Internal Depth Overall (inches)	27"
Internal Depth Overall (mm)	686
Internal Height Overall—(inches)	61 3/4"
Internal Height Overall—(mm)	1569
*Internal Height to Evaporator Housing—(inches)	54"
*Internal Height to Evaporator Housing—(mm)	1372
Number of shelves	10
ELECTRICAL DATA	
Full Load Amperes 115/60/1	8.8 A
ENERGY CONSUMPTION	
	5.17 kWh/Day
REFRIGERATION DATA	
Horsepower	1/3
WEIGHT DATA	
Gross Weight (Crated lbs)	471
Gross Weight (Crated kg)	214

PLAN VIEWS



Note: Not all markings may apply to all model variations.
*Internal height to evaporator housing.

BEVERAGE-AIR® CORPORATION

3779 Champion Blvd. • Winston-Salem, NC 27105 USA • (336) 245-6400 • Fax (336) 245-6453 • (888) 845-9800 • www.beverage-air.com

Specifications are subject to change without prior notice. 10/14

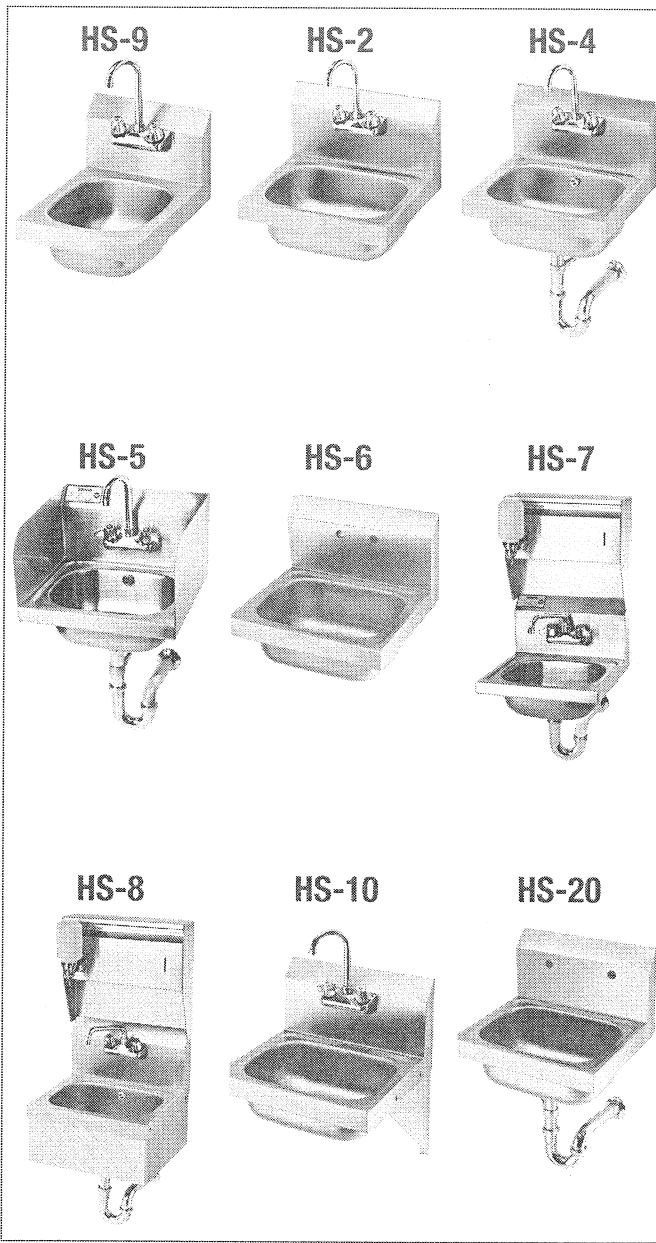


HAND SINKS

WALL MOUNT HAND SINKS

MODEL: _____ PROJECT: _____ ITEM #: _____ QTY: _____

PRODUCT IMAGES



STANDARD FEATURES

- **Fabrication**
20 gauge stainless steel. All seams tig welded and polished
- **Bowl**
Deep drawn with stamped rim to prevent spillage
- **Wall Mounting Bracket**
Offset design for added strength
- **Faucet**
4" on center wall mount faucet included on most models
- **Drain**
Stainless Steel
- **Drain with Overflow**
Stainless Steel with plastic overflow tube and inlet
- **Plumbing**
1/2" IPS hot and cold water. 1 1/2" IPS drain outlet. Install at 36" working height. 1/2" faucet supply 12" from floor. 1 1/2" drain line 23 1/4" from floor. (3 1/2" IPS drain on Model HS-20)
- **Low Lead Compliance**
Low Lead Compliant faucet options are available to meet California AB-1953 and Vermont S152 standards

OPTIONAL ACCESSORIES

- **H-100** Chrome Plated 1 1/2" IPS P-Trap
- **H-101** Deck Mount Soap Dispenser
- **H-102** Upgrade: Low Lead Wrist Handle Faucet
- **H-103** Wrist Handle Kit
- **H-104** Wall Mount Soap Dispenser
- **H-105** Wall Mount Towel Dispenser
- **H-106** One Side Splash (Specify Side)
- **H-107** Two Side Splashes
- **H-108** Stainless Steel Skirt
- **H-109** Upgrade: Low Lead Royal Series Faucet
- **H-110** Side Support Brackets
- **H-111** Soap & Towel Dispenser
- **H-200** Upgrade: Low Lead Commercial Series Faucet



CERTIFICATIONS:

APPROVED BY:

Due to our commitment to continued product improvement, specifications are subject to change without notice.

Printed in the USA

Krowne Metal Corporation

100 Haul Rd. Wayne, NJ 07470 • Toll Free: (800) 631-0442 • Fax: (973) 872-1129
sales@krowne.com • www.krowne.com • www.facebook.com/KrowneMetal • www.twitter.com/KrowneMetal

Rev. 1/2013
No. 2.1



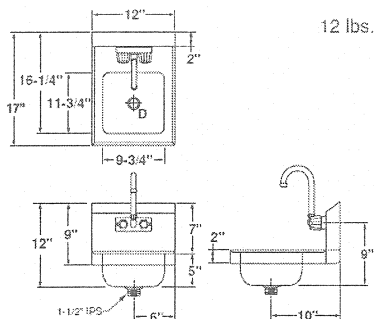
HAND SINKS

WALL MOUNT HAND SINKS

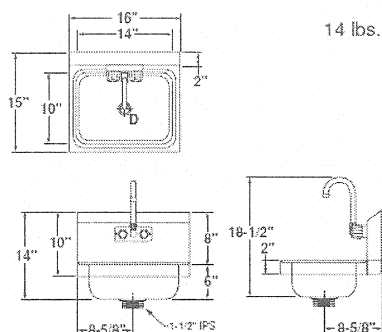
MODEL: _____ PROJECT: _____ ITEM #: _____ QTY: _____

WALL MOUNT HAND SINKS

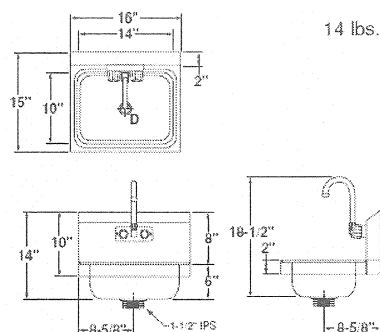
HS-9



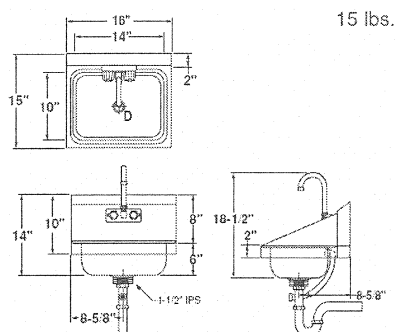
HS-2



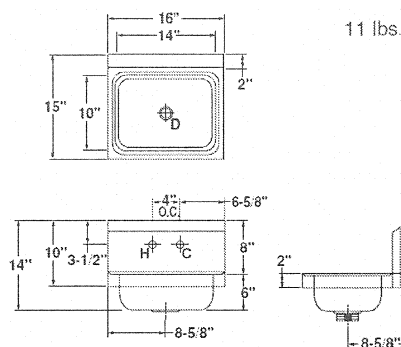
HS-4



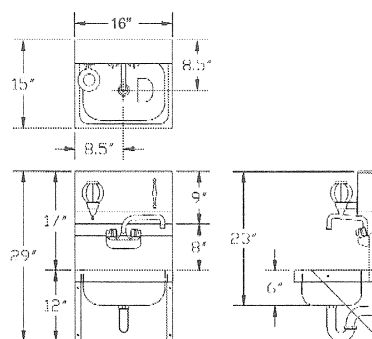
HS-5



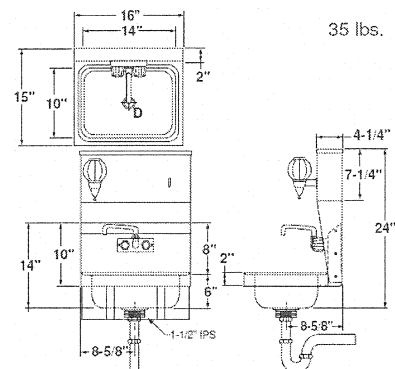
HS-6



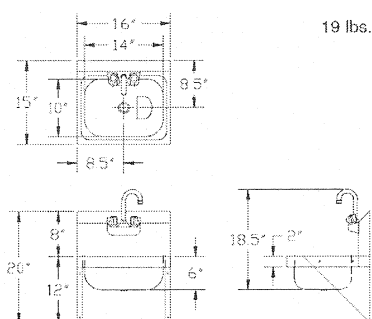
HS-7



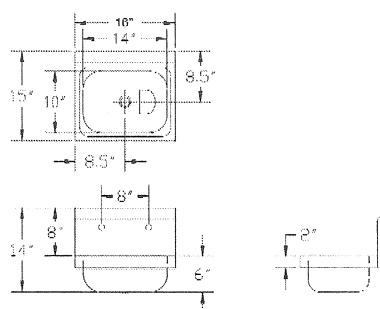
HS-8



HS-10



HS-20



APPROVED BY:

Due to our commitment to continued product improvement, specifications are subject to change without notice.

CERTIFICATIONS:

Printed in the USA

Krowne Metal Corporation

100 Haul Rd. Wayne, NJ 07470 • Toll Free: (800) 631-0442 • Fax: (973) 872-1129

sales@krowne.com • www.krowne.com • www.facebook.com/KrowneMetal • www.twitter.com/KrowneMetal

Rev. 1/2013

No. 2.1



"Hand Sinks" Pro-Bowl Sinks

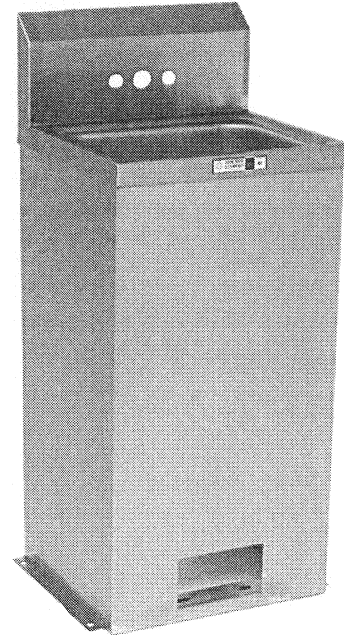
One Compartment Sinks
w/ Stainless Steel Deep Drawn Bowls



PBHS-W-1410-1



PBHS-W-1410



PBHS-F1410

FEATURES:

- * One piece deep drawn bowl
- * All sink bowls have a large liberal radii with a minimum dimension of 2" and rectangular in design for increased capacity.
- * Wall mounting bracket, Stainless Steel, off set design

CONSTRUCTION:

Bowl Stainless Steel Sinks are TIG welded, Exposed welds are polished to match adjacent surface.

MATERIAL:

Bowl Type 304 stainless steel polish, satin finish
Bracket Type 304 stainless steel polish, satin finish

OPTIONAL ACCESSORIES

	Qty
FAUCETS	
APRON SKIRT	
SIDE SPLASH	
ADA WRIST BLADES	
TOWEL DISPENSER	
SOAP DISPENSER	
LEVER WASTES	
OVER FLOWS	
P- TRAPS	

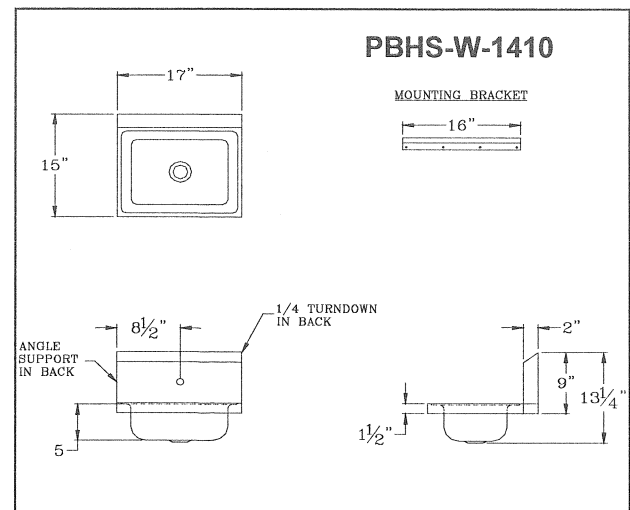
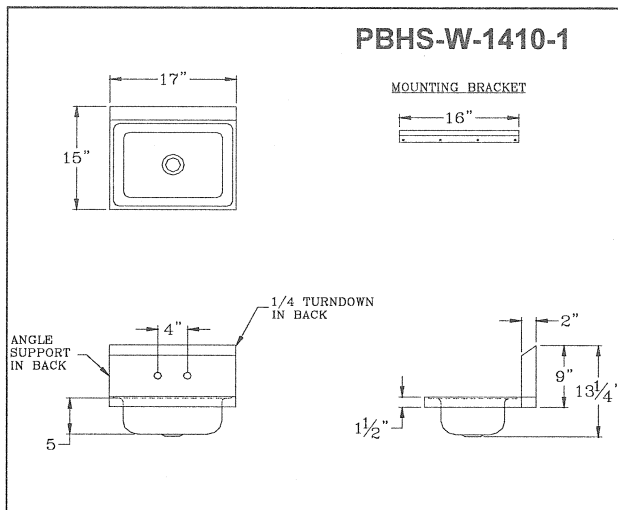
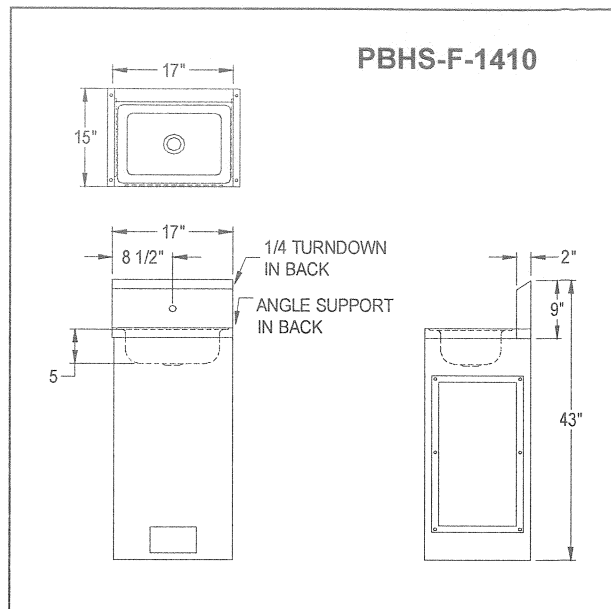
John Boos & Co

315 South First Street - Effingham, IL 62401

Phone: 217-347-7701 - Fax: 217-347-7705

Email: sales@johnboos.com - Web-site: www. johnboos.com

DETAILED SPECIFICATIONS



All dimensions are typical.

Tolerance +/- .500".

All units ship unassembled for reduced shipping cost.

John Boos & Co

315 South First - Effingham, IL 62401 Phone: 217-347-7701 - Fax: 217-347-7705

Email: sales@johnboos.com - Web-site: www.johnboos.com



May 2002

John Boos is constantly engaged in a program of improving products and therefore reserves the right to change specification without prior notice


CORPORATE RESOLUTION

EXCERPT FROM MINUTES OF MEETING OF THE BOARD OF DIRECTORS OF
Douglas Ford Stores Inc
INCORPORATED.

AT THE MEETING OF DIRECTORS OF Douglas Equipment
INCORPORATED, DULY NOTICED AND HELD ON 2-15-15,
A QUORUM BEING THERE PRESENT, ON MOTION DULY MADE AND SECONDED. IT
WAS:

RESOLVED THAT Pepper Dawn Martin, BE AND IS HEREBY
APPOINTED, CONSTITUTED AND DESIGNATED AS AGENT AND ATTORNEY-IN-
FACT OF THE CORPORATION WITH FULL POWER AND AUTHORITY TO ACT ON
BEHALF OF THIS CORPORATION IN ALL NEGOTIATIONS, BIDDING, CONCERNS
AND TRANSACTIONS WITH THE PARISH OF JEFFERSON OR ANY OF ITS AGENCIES,
DEPARTMENTS, EMPLOYEES OR AGENTS, INCLUDING BUT NOT LIMITED TO, THE
EXECUTION OF ALL BIDS, PAPERS, DOCUMENTS, AFFIDAVITS, BONDS, SURETIES,
CONTRACTS AND ACTS AND TO RECEIVE ALL PURCHASE ORDERS AND NOTICES
ISSUED PURSUANT TO THE PROVISIONS OF ANY SUCH BID OR CONTRACT, THIS
CORPORATION HEREBY RATIFYING, APPROVING, CONFIRMING, AND ACCEPTING
EACH AND EVERY SUCH ACT PERFORMED BY SAID AGENT AND ATTORNEY-IN-
FACT.

I HEREBY CERTIFY THE FOREGOING TO BE
A TRUE AND CORRECT COPY OF AN
EXCERPT OF THE MINUTES OF THE ABOVE
DATED MEETING OF THE BOARD OF
DIRECTORS OF SAID CORPORATION, AND
THE SAME HAS NOT BEEN REVOKED OR
RESCINDED.


SECRETARY-TREASURER

2-17-15
DATE

INSURANCE REQUIREMENTS - BIDS

All insurance requirements shall conform to Jefferson Parish Resolution No. 113646 or No. 113647. The contractor shall not commence work under this contract until he has obtained all insurance and complied with the requirements of the specifications and said Parish Resolutions. Except as otherwise provided by law, the Parish Attorney's Office with the concurrence of the Director of Risk Management is authorized to omit in whole or part the insurance requirements of this section in connection with contracts. Vendors inquiring about this shall submit his written request to the Purchasing Department prior to the due date of the bid. Contractor must deliver and maintain such insurances as provided; failure to do so shall be grounds for suspension, discontinuation or termination of the contract.

Successful bidder will be required to procure standard insurance policies evidencing Parish mandated insurance requirements indicated below. The current certificate of insurance must be submitted by low bidder within 10 days after bid opening to the Purchasing Department. Failure to comply will cause bid to be rejected.

1. WORKER'S COMPENSATION INSURANCE

As required by Louisiana State Statute, exception; Employer's Liability, Section B shall be \$1,000,000 per occurrence when Work is to be over water and involves maritime exposures to cover all employees not covered under the State Worker's Compensation Act, otherwise this limit shall be no less than \$500,000 per occurrence.

2. COMMERCIAL GENERAL LIABILITY

Shall provide limits not less than the following: \$1,000,000.00 Combined Single Limit per Occurrence for bodily injury and property damage.

3. COMPREHENSIVE AUTOMOBILE LIABILITY

Bodily injury liability \$1,000,000.00 each person; \$1,000,000.00 each occurrence.
Property Damage Liability \$1,000,000.00 each occurrence.

DEDUCTIBLES

No insurance required shall include a deductible not greater than \$10,000.00. The cost of the deductible shall be borne by the contractor.

NOTE: If the vendor requires a change in deductibles, the request must be submitted in writing to the Purchasing Department prior to the due date of the bid. Such request shall be reviewed by the Parish Attorney's Office.

UMBRELLA LIABILITY COVERAGE

An umbrella policy or excess may be used to meet minimum requirements.

CONSTRUCTION AND RENOVATION PROJECTS:

Unless otherwise specified in the bid, these additional insurance is required. Such insurance is due upon contract execution.

OWNER'S PROTECTIVE LIABILITY

To be for the same limits of liability for bodily injury and property damage liability established for commercial general liability.

BUILDER'S RISK INSURANCE

The contractor shall maintain Builder's Risk Insurance at his own expense to insure both the owner (Parish of Jefferson) and contractor as their interest may appear.

NOTE for CERTIFICATE HOLDER:

All insurance certificates shall list the certificate holder as follows:

"The Parish of Jefferson, its Districts, Departments and Agencies under the direction of the Parish President and the Parish Council." Additionally, the address on the Certificates should reflect the department which is letting the bid and reference the respective bid number.

Revised 2.10.2014

Non-Public Works Bid Affidavit Instructions

- Affidavit is supplied as a courtesy to Affiants, but it is the responsibility of the affiant to insure the affidavit they submit to Jefferson Parish complies, in both form and content, with federal, state and parish laws.
- Affidavit must be signed by an authorized representative of the entity or the affidavit will not be accepted.
- Affidavit must be notarized or the affidavit will not be accepted.
- Notary must sign name, print name, and include bar/notary number, or the affidavit will not be accepted.
- Affiant **MUST** select either A or B when required or the affidavit will not be accepted.
- Affiants who select choice A must include an attachment or the affidavit will not be accepted.
- If both choice A and B are selected, the affidavit will not be accepted.
- Affidavit marked N/A will not be accepted.
- It is the responsibility of the Affiant to submit a new affidavit if any additional campaign contributions are made after the affidavit is executed but prior to the time the council acts on the matter.

Instruction sheet may be omitted when submitting the affidavit

Non-Public Works Bid

AFFIDAVIT

STATE OF

LA

PARISH/COUNTY OF

Jefferson

BEFORE ME, the undersigned authority, personally came and appeared: Pepper
Martin, (Affiant) who after being by me duly sworn, deposed and said that
he/she is the fully authorized Bid Specialist of Douglas Equipment (Entity),
the party who submitted a bid in response to Bid Number 50001/221/0 to the Parish of
Jefferson.

Affiant further said:

Campaign Contribution Disclosures

(Choose A or B, if option A is indicated please include the required
attachment):

Choice A _____

Attached hereto is a list of all campaign contributions, including the date and amount of each contribution, made to current or former elected officials of the Parish of Jefferson by Entity, Affiant, and/or officers, directors and owners, including employees, owning 25% or more of the Entity during the two-year period immediately preceding the date of this affidavit or the current term of the elected official, whichever is greater. Further, Entity, Affiant, and/or Entity Owners have not made any contributions to or in support of current or former members of the Jefferson Parish Council or the Jefferson Parish President through or in the name of another person or legal entity, either directly or indirectly.

Choice B ☒ _____

there are NO campaign contributions made which would require disclosure under Choice A of this section.

Debt Disclosures

(Choose A or B, if option A is indicated please include the required attachment):

Choice A _____ Attached hereto is a list of all debts owed by the affiant to any elected or appointed official of the Parish of Jefferson, and any and all debts owed by any elected or appointed official of the Parish to the Affiant.

Choice B ✓ _____ There are NO debts which would require disclosure under Choice A of this section.

Affiant further said:

That Affiant has employed no person, corporation, firm, association, or other organization, either directly or indirectly, to secure the public contract under which he received payment, other than persons regularly employed by the Affiant whose services in connection with the construction, alteration or demolition of the public building or project or in securing the public contract were in the regular course of their duties for Affiant; and

[The remainder of this page is intentionally left blank.]

That no part of the contract price received by Affiant was paid or will be paid to any person, corporation, firm, association, or other organization for soliciting the contract, other than the payment of their normal compensation to persons regularly employed by the Affiant whose services in connection with the construction, alteration or demolition of the public building or project were in the regular course of their duties for Affiant.

Pepper Martin
Signature of Affiant

Pepper Martin
Printed Name of Affiant

SWORN AND SUBSCRIBED TO BEFORE ME

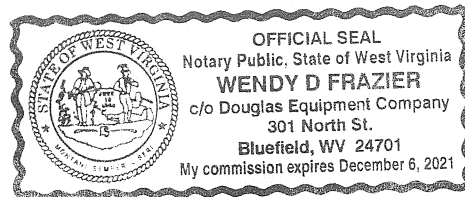
ON THE 26th DAY OF February, 20 15.

Wendy D Frazier
Notary Public

Wendy D Frazier
Printed Name of Notary

Notary/Bar Roll Number

My commission expires 12/6/21.





WWW.JEFFPARISH.NET

JOHN F. YOUNG, JR.
PARISH PRESIDENT

JEFFERSON PARISH DEPARTMENT OF PURCHASING

BRENDA J. CAMPOS
DIRECTOR

February 13, 2015

ADDENDUM NO.1

Bid No.: 50-00112210

Bid Opening Date: February 26, 2015

**For: Labor, Materials, Parts, and Equipment to Install Kitchen Equipment at the M L King
Playground**

Clarification of Specifications:

- o All plumbing, electrical, and mechanical shall be included and provided by contractor to provide all necessary work up to Jefferson Parish Inspection Code Enforcement.

Sincerely,

A handwritten signature in dark ink, appearing to read "Laniel L. Francis", is written over a horizontal line.

Laniel L. Francis, Buyer II
Jefferson Parish Purchasing Department

Bidders must acknowledge all addenda on the bid form. Bidder acknowledges receipt of this addendum on the bid form as indicated. Failure to do so will result in bid rejection.

This addendum is a part of the contract documents and modifies the original bidding documents and specifications. The contents of this addendum shall be included in the contract documents. Changes made by this addendum shall take precedence over the documents of earlier date.



CENTRALBIDDING
FROM CENTRAL AUCTION HOUSE

**5000112210 - LABOR, MATERIALS, PARTS, AND EQUIPMENT TO
INSTALL KITCHEN EQUIPMENT AT THE M L KING PLAYGROUND**
Jefferson Parish Government

Project documents obtained from www.CentralBidding.com

16-Feb-2015 07:12:44 AM



WWW.JEFFPARISH.NET

JOHN F. YOUNG, JR.
PARISH PRESIDENT

JEFFERSON PARISH DEPARTMENT OF PURCHASING

BRENDA J. CAMPOS
DIRECTOR

February 13, 2015

ADDENDUM NO.1

Bid No.: 50-00112210

Bid Opening Date: February 26, 2015

**For: Labor, Materials, Parts, and Equipment to Install Kitchen Equipment at the M L King
Playground**

Clarification of Specifications:

- All plumbing, electrical, and mechanical shall be included and provided by contractor to provide all necessary work up to Jefferson Parish Inspection Code Enforcement.

Sincerely,

A handwritten signature in cursive script, reading "Laniel L. Francis", is written over a horizontal line.

Laniel L. Francis, Buyer II
Jefferson Parish Purchasing Department

**Bidders must acknowledge all addenda on the bid form. Bidder acknowledges receipt of
this addendum on the bid form as indicated. Failure to do so will result in bid rejection.**

This addendum is a part of the contract documents and modifies the original bidding documents and specifications. The contents of this addendum shall be included in the contract documents. Changes made by this addendum shall take precedence over the documents of earlier date.



CERTIFICATE OF LIABILITY INSURANCE

DATE (MM/DD/YYYY)

4/18/14

THIS CERTIFICATE IS ISSUED AS A MATTER OF INFORMATION ONLY AND CONFERS NO RIGHTS UPON THE CERTIFICATE HOLDER. THIS CERTIFICATE DOES NOT AFFIRMATIVELY OR NEGATIVELY AMEND, EXTEND OR ALTER THE COVERAGE AFFORDED BY THE POLICIES BELOW. THIS CERTIFICATE OF INSURANCE DOES NOT CONSTITUTE A CONTRACT BETWEEN THE ISSUING INSURER(S), AUTHORIZED REPRESENTATIVE OR PRODUCER, AND THE CERTIFICATE HOLDER.

IMPORTANT: If the certificate holder is an ADDITIONAL INSURED, the policy(ies) must be endorsed. If SUBROGATION IS WAIVED, subject to the terms and conditions of the policy, certain policies may require an endorsement. A statement on this certificate does not confer rights to the certificate holder in lieu of such endorsement(s).

PRODUCER

Partners Insurance & Financial Services, Inc.
408 Tennessee Ave.
Charleston, WV 25302

CONTACT

NAME Tom Bickford

PHONE (A/C, No, Ext): 304-344-3121

FAX (A/C, No): 304-720-7285

E-MAIL

ADDRESS:

INSURER(S) AFFORDING COVERAGE

NAIC #

INSURER A: Nationwide Property and Casualty Ins. Co.

INSURER B: Nationwide Mutual Fire Ins. Co.

INSURER C:

INSURER D:

INSURER E:

INSURER F:

INSURED

Douglas Food Stores, Inc.
301 North St.
Bluefield, WV 24701

COVERAGES

CERTIFICATE NUMBER:

REVISION NUMBER:

THIS IS TO CERTIFY THAT THE POLICIES OF INSURANCE LISTED BELOW HAVE BEEN ISSUED TO THE INSURED NAMED ABOVE FOR THE POLICY PERIOD INDICATED. NOTWITHSTANDING ANY REQUIREMENT, TERM OR CONDITION OF ANY CONTRACT OR OTHER DOCUMENT WITH RESPECT TO WHICH THIS CERTIFICATE MAY BE ISSUED OR MAY PERTAIN, THE INSURANCE AFFORDED BY THE POLICIES DESCRIBED HEREIN IS SUBJECT TO ALL THE TERMS, EXCLUSIONS AND CONDITIONS OF SUCH POLICIES. LIMITS SHOWN MAY HAVE BEEN REDUCED BY PAID CLAIMS.

INSR LTR	TYPE OF INSURANCE	ADDL INSR	SUBR WVD	POLICY NUMBER	POLICY EFF (MM/DD/YYYY)	POLICY EXP (MM/DD/YYYY)	LIMITS
A	GENERAL LIABILITY						EACH OCCURRENCE \$ 1,000,000
	<input checked="" type="checkbox"/> COMMERCIAL GENERAL LIABILITY						DAMAGE TO RENTED PREMISES (Ea occurrence) \$ 300,000
	<input type="checkbox"/> CLAIMS-MADE <input checked="" type="checkbox"/> OCCUR			ACBPWK 5744424944	3-20-14	3-20-15	MED EXP (Any one person) \$ 5,000
							PERSONAL & ADV INJURY \$ 1,000,000
							GENERAL AGGREGATE \$ 2,000,000
	GEN'L AGGREGATE LIMIT APPLIES PER:						PRODUCTS: COMP/DP AGG \$ 2,000,000
	<input checked="" type="checkbox"/> POLICY <input type="checkbox"/> PRO-JECT <input type="checkbox"/> LOC						\$
A	AUTOMOBILE LIABILITY						COMBINED SINGLE LIMIT (Ea accident) \$ 1,000,000
	<input type="checkbox"/> ANY AUTO			ACBPAK 5744424944	3-20-14	3-20-15	BODILY INJURY (Per person) \$
	<input type="checkbox"/> ALL OWNED AUTOS <input checked="" type="checkbox"/> SCHEDULED AUTOS						BODILY INJURY (Per accident) \$
	<input checked="" type="checkbox"/> HIRED AUTOS <input checked="" type="checkbox"/> NON-OWNED AUTOS						PROPERTY DAMAGE (Per accident) \$
							\$
B	<input checked="" type="checkbox"/> UMBRELLA LIAB <input checked="" type="checkbox"/> OCCUR			ACP CAF 5744424944			EACH OCCURRENCE \$ 2,000,000
	<input type="checkbox"/> EXCESS LIAB <input type="checkbox"/> CLAIMS-MADE						AGGREGATE \$ 2,000,000
	<input type="checkbox"/> DED <input type="checkbox"/> RETENTION \$						\$
	WORKERS COMPENSATION AND EMPLOYERS' LIABILITY						WC STATUTORY LIMITS OTHER
	ANY PROPRIETOR/PARTNER/EXECUTIVE OFFICE/MEMBER EXCLUDED?		N/A				E.L. EACH ACCIDENT \$
	(Mandatory in NH)						E.L. DISEASE - EA EMPLOYEE \$
	If yes, describe under DESCRIPTION OF OPERATIONS below						E.L. DISEASE - POLICY LIMIT \$

DESCRIPTION OF OPERATIONS / LOCATIONS / VEHICLES / (Attach ACORD 101, Additional Remarks Schedule, if more space is required)

Food Equipment Distributor

CERTIFICATE HOLDER

Evidence of Insurance Only

CANCELLATION

SHOULD ANY OF THE ABOVE DESCRIBED POLICIES BE CANCELLED BEFORE THE EXPIRATION DATE THEREOF, NOTICE WILL BE DELIVERED IN ACCORDANCE WITH THE POLICY PROVISIONS.

AUTHORIZED REPRESENTATIVE



CERTIFICATE OF LIABILITY INSURANCE

OP ID: BSTU

DATE (MM/DD/YYYY)

08/05/2014

THIS CERTIFICATE IS ISSUED AS A MATTER OF INFORMATION ONLY AND CONFERS NO RIGHTS UPON THE CERTIFICATE HOLDER. THIS CERTIFICATE DOES NOT AFFIRMATIVELY OR NEGATIVELY AMEND, EXTEND OR ALTER THE COVERAGE AFFORDED BY THE POLICIES BELOW. THIS CERTIFICATE OF INSURANCE DOES NOT CONSTITUTE A CONTRACT BETWEEN THE ISSUING INSURER(S), AUTHORIZED REPRESENTATIVE OR PRODUCER, AND THE CERTIFICATE HOLDER.

IMPORTANT: If the certificate holder is an ADDITIONAL INSURED, the policy(ies) must be endorsed. If SUBROGATION IS WAIVED, subject to the terms and conditions of the policy, certain policies may require an endorsement. A statement on this certificate does not confer rights to the certificate holder in lieu of such endorsement(s).

PRODUCER First Community Ins. Services One Stafford Commons PO Box 5069 Princeton, WV 24740		Phone: 304-425-8793 Fax: 304-431-9090	CONTACT NAME: Brenda Sturgill, AAI, ACSR PHONE (A/C, No, Ext): 304-431-7035 FAX (A/C, No): 304-431-9090 E-MAIL ADDRESS: bsturgill@fcis.com PRODUCER CUSTOMER ID #: DOUF001
INSURED Douglas Food Stores, Inc. DBA Douglas Equipment Attention: Larry Douglas 301 North Street Bluefield, WV 24701		INSURER(S) AFFORDING COVERAGE INSURER A: The Hartford INSURER B: INSURER C: INSURER D: INSURER E: INSURER F:	

COVERAGES		CERTIFICATE NUMBER:		REVISION NUMBER:			
THIS IS TO CERTIFY THAT THE POLICIES OF INSURANCE LISTED BELOW HAVE BEEN ISSUED TO THE INSURED NAMED ABOVE FOR THE POLICY PERIOD INDICATED. NOTWITHSTANDING ANY REQUIREMENT, TERM OR CONDITION OF ANY CONTRACT OR OTHER DOCUMENT WITH RESPECT TO WHICH THIS CERTIFICATE MAY BE ISSUED OR MAY PERTAIN, THE INSURANCE AFFORDED BY THE POLICIES DESCRIBED HEREIN IS SUBJECT TO ALL THE TERMS, EXCLUSIONS AND CONDITIONS OF SUCH POLICIES. LIMITS SHOWN MAY HAVE BEEN REDUCED BY PAID CLAIMS.							
INSR LTR	TYPE OF INSURANCE	ADDL INSR	SUBR WVD	POLICY NUMBER	POLICY EFF (MM/DD/YYYY)	POLICY EXP (MM/DD/YYYY)	LIMITS
	GENERAL LIABILITY <input type="checkbox"/> COMMERCIAL GENERAL LIABILITY <input type="checkbox"/> CLAIMS-MADE <input type="checkbox"/> OCCUR GEN'L AGGREGATE LIMIT APPLIES PER: <input type="checkbox"/> POLICY <input type="checkbox"/> PRO-JECT <input type="checkbox"/> LOC						EACH OCCURRENCE \$ DAMAGE TO RENTED PREMISES (Ea occurrence) \$ MED EXP (Any one person) \$ PERSONAL & ADV INJURY \$ GENERAL AGGREGATE \$ PRODUCTS - COM/OP AGG \$ \$
	AUTOMOBILE LIABILITY <input type="checkbox"/> ANY AUTO <input type="checkbox"/> ALL OWNED AUTOS <input type="checkbox"/> SCHEDULED AUTOS <input type="checkbox"/> HIRED AUTOS <input type="checkbox"/> NON-OWNED AUTOS						COMBINED SINGLE LIMIT (Ea accident) \$ BODILY INJURY (Per person) \$ BODILY INJURY (Per accident) \$ PROPERTY DAMAGE (Per accident) \$ \$ \$
	UMBRELLA LIAB <input type="checkbox"/> OCCUR EXCESS LIAB <input type="checkbox"/> CLAIMS-MADE DEDUCTIBLE RETENTION \$						EACH OCCURRENCE \$ AGGREGATE \$ \$ \$
A	WORKERS COMPENSATION AND EMPLOYERS' LIABILITY ANY PROPRIETOR/PARTNER/EXECUTIVE OFFICER/MEMBER EXCLUDED? (Mandatory in NH) If yes, describe under DESCRIPTION OF OPERATIONS below	Y/N <input type="checkbox"/>	N/A	40WECLV4622	08/01/2014	08/01/2015	X WC STATU-TORY LIMITS <input type="checkbox"/> OTH-ER E.L. EACH ACCIDENT \$ 100,000 E.L. DISEASE - EA EMPLOYEE \$ 100,000 E.L. DISEASE - POLICY LIMIT \$ 500,000
DESCRIPTION OF OPERATIONS / LOCATIONS / VEHICLES (Attach ACORD 101, Additional Remarks Schedule, if more space is required)							

CERTIFICATE HOLDER BROWA-2	CANCELLATION SHOULD ANY OF THE ABOVE DESCRIBED POLICIES BE CANCELLED BEFORE THE EXPIRATION DATE THEREOF, NOTICE WILL BE DELIVERED IN ACCORDANCE WITH THE POLICY PROVISIONS. AUTHORIZED REPRESENTATIVE
--------------------------------------	--

© 1988-2009 ACORD CORPORATION. All rights reserved.



Contractors Bonding and Insurance Company
9025 N. Lindbergh Dr. Peoria, IL 61615
P.O. Box 3967 Peoria, IL 61612-3967
Phone: 309-692-1000 Fax: 309-683-1610

BID BOND

Bond No. _____

KNOW ALL MEN BY THESE PRESENTS,


That We, Douglas Food Stores, Inc. DBA Douglas Equipment
of 301 North Street, Bluefield, WV 24701
as Principal, and Contractors Bonding and Insurance Company, of Peoria,
Illinois, as Surety, an Illinois corporation duly licensed to
do business in the State of LA, are held and firmly bound unto
Jefferson Parish, Purchasing Dept., PO Box 9, Gretna, LA 70054-0009, as Obligee, in the penal sum of
5% of Bid Amount (5%),
for the payment of which the Principal and the Surety bind themselves, their heirs, executors, administrators, successors and
assigns, jointly and severally, firmly by these presents.

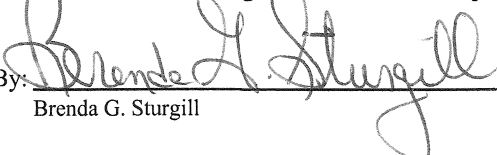
THE CONDITION OF THIS OBLIGATION IS SUCH, That whereas the Principal has submitted, or is about to submit, a
proposal or a bid to the Obligee on a contract for Bid No. 50-00112210 Delivery and installation of Captive Aire Hood,
Model 4812SND-2-PSP-F and various equipment at M L King Playground.

NOW, THEREFORE, if the aforesaid principal shall be awarded the contract, the said principal will within the period specified
therefore, or if no period be specified, within ten (10) days after the notice of such award enter into a contract and give bond for
the faithful performance of the contract, then this obligation shall be null and void, otherwise the principal and the surety will
pay unto the obligee the difference in money between the amount of the bid of said principal and the amount for which the
obligee may legally contract with another party to perform the work if the latter amount be in excess of the former, in no event
shall the liability hereunder exceed the penal sum hereof.

PROVIDED AND SUBJECT TO THE CONDITION PRECEDENT, that any suits at law or proceedings in equity brought or to
be brought against the Surety to recover any claim hereunder must be instituted and service had upon the Surety within ninety
(90) days after the acceptance of said bid of the Principal by the Obligee.

SIGNED, SEALED AND DATED this 25th day of February, 2015.

Douglas Food Stores, Inc. DBA Douglas Equipment
Principal
By: 

Contractors Bonding and Insurance Company
By: 
Brenda G. Sturgill Attorney in Fact

ADDRESS ALL CORRESPONDENCE TO:

Contractors Bonding and Insurance Company
9025 N. Lindbergh Dr. Peoria, IL 61615
P.O. Box 3967 Peoria, IL 61612
309-692-1000

C0006304-10,0



Contractors Bonding and Insurance Company
P.O. Box 3967 Peoria IL 61612-3967
Phone: (309)692-1000 Fax: (309)683-1610

POWER OF ATTORNEY

Contractors Bonding and Insurance Company

Bond No. LSM0607952

Know All Men by These Presents:

That the Contractors Bonding and Insurance Company, a corporation organized and existing under the laws of the State of Illinois, and authorized and licensed to do business in all states and the District of Columbia does hereby make, constitute and appoint: Brenda G. Sturgill in the City of Princeton, State of West Virginia, as Attorney In Fact, with full power and authority hereby conferred upon him/her to sign, execute, acknowledge and deliver for and on its behalf as Surety, in general, any and all bonds, undertakings, and recognizances in an amount not to exceed Ten Million and 00/100 Dollars (\$10,000,000.00) for any single obligation, and specifically for the following described bond.

Principal: Douglas Food Stores, Inc. DBA Douglas Equipment

Obligee: Jefferson Parish Purchasing Department

Bond Amount: 5% of Total Amount Bid

The Contractors Bonding and Insurance Company further certifies that the following is a true and exact copy of a Resolution adopted by the Board of Directors of Contractors Bonding and Insurance Company, and now in force to-wit:

"All bonds, policies, undertakings, Powers of Attorney or other obligations of the corporation shall be executed in the corporate name of the Company by the President, Secretary, any Assistant Secretary, Treasurer, or any Vice President, or by such other officers as the Board of Directors may authorize. The President, any Vice President, Secretary, any Assistant Secretary, or the Treasurer may appoint Attorneys in Fact or Agents who shall have authority to issue bonds, policies or undertakings in the name of the Company. The corporate seal is not necessary for the validity of any bonds, policies, undertakings, Powers of Attorney or other obligations of the corporation. The signature of any such officer and the corporate seal may be printed by facsimile."

IN WITNESS WHEREOF, the Contractors Bonding and Insurance Company has caused these presents to be executed by its Vice President with its corporate seal affixed this 25th day of February, 2015.

ATTEST:

Cynthia S. Dohm
Cynthia S. Dohm Assistant Secretary



Contractors Bonding and Insurance Company

Roy C. Die
Roy C. Die Vice President

On this 25th day of February, 2015 before me, a Notary Public, personally appeared Roy C. Die and Cynthia S. Dohm, who being by me duly sworn, acknowledged that they signed the above Power of Attorney as Vice President and Assistant Secretary, respectively, of the said Contractors Bonding and Insurance Company, and acknowledged said instrument to be the voluntary act and deed of said corporation.

Jacqueline M. Bockler
Jacqueline M. Bockler Notary Public

