



**CENTRALBIDDING**  
FROM CENTRAL AUCTION HOUSE

**5000128487 LABOR, MATERIAL AND EQUIPMENT NECESSARY TO  
PROVIDE AND INSTALL ONE (1) NEW POLYSTYRENE MONUMENT  
STYLE SIGN FOR THE DEPARTMENT OF PARKWAYS  
Jefferson Parish Government**

Project documents obtained from [www.CentralBidding.com](http://www.CentralBidding.com)

16-Oct-2019 03:33:14 PM



# JEFFERSON PARISH

Department of Purchasing

**Michael S. Yenni**  
Parish President

**Renny Simno**  
Director

June 2019

## CHANGES TO JEFFERSON PARISH BIDDING PROCEDURES

The Jefferson Parish Purchasing Department would like to make vendors aware of the following changes:

**DEDUCTIBLES:** The Parish Attorney with concurrence of the Director of Risk Management have waived the deductible section of the Terms and Conditions for all Invitations to Bid, until further notice.

**PROTESTS:** Only those vendors that submit bids in response to a solicitation may protest any element of the procurement, in writing to the Director of the Purchasing Department. Written protest must be received within 48 hours of the release of the bid tabulation by the Purchasing Department. After consultation, the Parish Attorney's Office will then respond to protests in writing. (For more information, please see Chapter 2, Article VII, Division 2, Sec. 2-914.1 of the Jefferson Parish Code of Ordinances.)

Please contact the Jefferson Parish Purchasing Department at 504-364-2678 if you have any questions or need assistance.



**Bid Number 50 - 00128487**

Labor, material and equipment necessary to provide and install one (1) new Polystyrene Monument Style Sign for the Department of Parkways

**October 28, 2019 at 11:00 am**

**ATTENTION VENDORS!!!**

**Please review all pages and respond accordingly, complying with all provisions in the technical specifications and Jefferson Parish Instructions for Bidders and General Terms and Conditions. All bids must be received in the Purchasing Department by the bid due date and time.**

**Jefferson Parish Purchasing Department  
200 Derbigny Street  
General Government Building, Suite 4400  
Gretna, LA 70053  
Buyer Name: Doris Abraham, Buyer I  
Buyer Email: [dabraham@jeffparish.net](mailto:dabraham@jeffparish.net)  
Buyer Phone: 504-364-2690**

DATE: 10/16/2019

INVITATION TO BID  
THIS IS NOT AN ORDER

Page: 1

BID NO.: 50-00128487

**JEFFERSON PARISH**  
PURCHASING DEPARTMENT  
P.O. BOX 9  
GRETN, LA. 70054-0009  
504-364-2678

VENDOR:

BUYER: DABRAHAM@jeffparish.net

Bids will be received until 11:00 AM, 10/28/2019 via online at [www.jeffparishbids.net](http://www.jeffparishbids.net) or by hand delivery, USPS mail or other courier service to Purchasing Department, 200 Derbigny Street (General Government Building), Suite 4400, Gretna, LA 70053. For convenience, bidders may also submit bids in the East Bank Purchasing Department, Suite 404, Jefferson Parish Joseph S. Yenni Building, 1221 Elmwood Park Blvd., Jefferson LA 70123. However, if submitting bids on the day of bid opening, bidders must submit at the West Bank location only.

All bids submitted are subject to these instructions and general conditions and any special conditions and specifications contained herein, all of which are made part of this bid proposal reference. By submitting a bid, vendor agrees to comply with all provisions of Louisiana Law, as well be in compliance with the Jefferson Parish Code of Ordinances, Louisiana Code of Ethics, applicable Jefferson Parish ethical standards and Jefferson Parish Resolution No. 113646 and/or Resolution No. 113647. A copy of these resolutions may be obtained from the Office of the Parish Clerk, Suite 6700, Jefferson Parish General Government Building, 200 Derbigny Street, Gretna, LA 70053. You may also obtain a copy by visiting the Purchasing Department webpage at [purchasing.jeffparish.net](http://purchasing.jeffparish.net) and clicking on On-line forms.

All vendors submitting bids should register as a Jefferson Parish vendor if not already yet registered. Registration forms may be downloaded from <http://purchasing.jeffparish.net> and by clicking on Vendor Information. Current W-9 forms with respective Tax Identification numbers and vendor applications may be submitted at any time; however, if your company is not registered and/or a current W-9 form is not on file, vendor registration is mandatory. Further, a current W-9 form and respective Tax Identification number must be supplied upon contract execution, should you be awarded a contract and/or issued purchase order. Failure to do so may result in delay of payment.

As per LSA-RS 47:301 et seq., all governmental bodies are excluded from payment of sales taxes to any Louisiana taxing body. Quotations shall be based on F.O.B. Delivered, anywhere within the Parish as designated by the Purchasing Department. JEFFERSON PARISH WILL ACCEPT ONE BID ONLY FROM EACH VENDOR. Items bid must meet specifications. JEFFERSON PARISH will accept one price for each item unless otherwise indicated. Two or more prices for one item will result in bid rejection. Bidders are required to complete, sign and return the bid form and/or complete and return the associated line item pricing forms as indicated. The price quoted for work shall be stated in figures. In the event there is a difference in unit prices and totals, the unit prices shall prevail.

JEFFERSON PARISH reserves the right to award contracts or place orders on a lump sum or individual item basis, or such combination, as shall in its judgment be in the best interest of JEFFERSON PARISH. Every contract or order shall be awarded to the LOWEST RESPONSIVE and RESPONSIBLE BIDDER, taking into consideration the CONFORMITY WITH THE SPECIFICATIONS and the DELIVERY AND/OR COMPLETION DATE

PROTESTS: Only those vendors that submit bids in response to this solicitation may protest any element of the procurement, in writing to the Director of the Purchasing Department. Written protest must be received within 48 hours of the release of the bid tabulation by the Purchasing Department. After consultation, the Parish Attorney's Office will then respond to protests in writing. (For more information, please see Chapter 2, Article VII, Division 2, Sec. 2-914.1 of the Jefferson Parish Code of Ordinances.)

JEFFERSON PARISH reserves the right to cancel all or any part of an order if not shipped promptly. No charges will be allowed for parking or cartage unless specified in the quotation. The order must not be filled at a higher price than quoted. JEFFERSON PARISH reserves the right to cancel at any time and for any reason by issuing a THIRTY (30) day written notice to the contractor.

JEFFERSON PARISH requires all products to be new (current) and all work must be performed according to standard practices for the project. Unless otherwise specified, no aftermarket parts will be accepted. Unless otherwise specified, all workmanship and materials must have at least one (1) year warranty, in writing, from the date of delivery and/or acceptance of the project. Any deviations or alteration from the specifications must be indicated on the bid form for each item and upon request, product data for same must be submitted by the time specified by the Purchasing Department.

If this bid requires a pre-bid conference (see Additional Requirements section), bidders are advised that such conference will be held to allow bidders the opportunity to identify any discrepancies in the bid specifications and seek further clarification regarding instructions. The Purchasing Department will issue a written response to bidders' questions in the form of an Addendum.

All formal Addenda require written acknowledgment on the bid form by the bidder. Failure to acknowledge an Addendum on the bid form shall cause the bid to be rejected; JEFFERSON PARISH reserves the right to award bid to next lowest responsive and responsible bidder in this event.

USE OF BRAND NAMES AND STOCK NUMBERS: Where brand names and stock numbers are specified, it is for the purpose of establishing certain minimum standards of quality. Bids may be submitted for products of equal quality, provided brand names and stock numbers are specified. Complete product data may be required prior to award.

Quantities listed are for bidding purposes only. Actual requirements may be more or less than quantities listed.

Bidders are not to exclude from participation in, deny the benefits of, or subject to discrimination under any program or activity, any person in the United States on the grounds of race, color, national origin, or sex; nor discriminate on the basis of age under the Age Discrimination Act of 1975, or with respect to an otherwise qualified handicapped individual as provided in Section 504 of the Rehabilitation Act of 1973, or on the basis of religion, except that any exemption from such prohibition against discrimination on the basis of religion as provided in the Civil Rights Act of 1964, or Title VI and VII of the Act of April 11, 1968, shall also apply. This assurance includes compliance with the administrative requirements of the Revenue Sharing final handicapped discrimination provisions contained in Section 51.55 (c), (d), (e), and (k)(5) of the Regulations. New construction or renovation projects must comply with Section 504 of the 1973 Rehabilitation Act, as amended, in accordance with the American National Standard Institute's specifications (ANSI A117.1-1961).

Jefferson Parish and its partners as the recipients of federal funds are fully committed to awarding a contract(s) to firm(s) that will provide high quality services and that are dedicated to diversity and to containing costs. Thus, Jefferson Parish strongly encourages the involvement of minority and/or woman-owned business enterprises (DBE's, including MBE's, WBE's and SBE's) to stimulate participation in procurement and assistance programs.



## INSTRUCTIONS FOR BIDDERS AND GENERAL CONDITIONS

### IN ACCORDANCE WITH STATE REGULATIONS JEFFERSON PARISH OFFERS ELECTRONIC PROCUREMENT TO ALL VENDORS

This electronic procurement system allows vendors the convenience of reviewing and submitting bids online.

This is a secure site and authorized personnel have limited read access only. Bidders are encouraged to submit electronically using this free service; while the website accepts various file types, one single PDF file containing all appropriate and required bid documents is preferred. Bidders submitting uploaded images of bid responses are solely responsible for clarity. If uploaded images/documents are not legible, then bidder's submission will be rejected. Please note all requirements contained in this bid package for electronic bid submission.

Please visit our E-Procurement Page at [www.jeffparishbids.net](http://www.jeffparishbids.net) to register and view Jefferson Parish solicitations. For more information, please visit the Purchasing Department page at <http://purchasing.jeffparish.net>.

## ADDITIONAL REQUIREMENTS FOR THIS BID

PLEASE MATCH THE NUMBERS PRINTED IN THIS BOX WITH THE CORRESPONDING INSTRUCTIONS BELOW.

4, 5, 6, 10, 13

1. All bidders must attend the MANDATORY pre-bid conference and will be required to sign in and out as evidence of attendance. In accordance with LSA R.S. 38:2212(I), all prospective bidders shall be present at the beginning of the MANDATORY pre-bid conference and shall remain in attendance for the duration of the conference. Any prospective bidder who fails to attend the conference or remain for the duration shall be prohibited from submitting a bid for the project.
2. Attendance to this pre-bid conference is optional. However, failure to attend the pre-bid conference shall not relieve the bidder of responsibility for information discussed at the conference. Furthermore, failure to attend the pre-bid conference and inspection does not relieve the successful bidder from the necessity of furnishing materials or performing any work that may be required to complete the work in accordance with the specification with no additional cost to the owner.
3. Contractor must hold current applicable JEFFERSON PARISH licenses with the Department of Inspection and Code Enforcement. Contractor shall obtain any and all permits required by the JEFFERSON PARISH Department of Inspection and Code Enforcement. The contractor shall be responsible for the payment of these permits. All permits must be obtained prior to the start of the project. Contractor must also hold any and all applicable Federal and State licenses. Contractor shall be responsible for the payment of these permits and shall obtain them prior to the start of the project.
4. A LA State Contractor's License will be required in accordance with LSA R.S. 37-2150 et. seq. and such license number will be shown on the outside of the bid envelope. Failure to comply will cause the bid to be rejected. Additionally if submitting the bid electronically, then the license number must be entered in the appropriate field in the Electronic Procurement system. Failure to comply will cause the bid to be rejected.
5. It is the bidder's responsibility to visit the job site and evaluate the job before submitting a bid.
6. Job site must be clean and free of all litter and debris daily and upon completion of the contract. Passageways must be kept clean and free of material, equipment, and debris at all times. Flammable material must be removed from the job site daily because storage will not be permitted on the premises. Precautions must be exercised at all times to safeguard the welfare of JEFFERSON PARISH and the general public.

**INSTRUCTIONS FOR BIDDERS AND GENERAL CONDITIONS**

7. **PUBLIC WORKS BIDS:** All awards for public works in excess of \$5,000.00 will be reduced to a formal contract which shall be recorded at the contractor's expense with the Clerk of Court and Ex-Officio Recorder of Mortgages for the Parish of Jefferson. A price list of recordation costs may be obtained from the Clerk of Court and Ex-Officio Recorder of Mortgages for the Parish of Jefferson. All awards in excess of \$25,000.00 will require both a performance and a payment bond. Unless otherwise stated in the bid specifications, the performance bond requirements shall be 100% of the contract price. Unless otherwise state in the bid specifications, the payment bond requirements shall be 100% of the contract price. Both bonds shall be supplied at the signing of the contract.
8. **NON-PUBLIC WORKS BIDS:** A performance bond will be required for this bid. The amount of the bond will be 100% of the contract price unless otherwise indicated in the specifications. The performance bond shall be supplied at the signing of the contract.
9. **NON-PUBLIC WORKS BIDS:** A payment bond will be required for this bid. The amount of the bond will be 100% of the contract price unless otherwise indicated in the specifications. The payment bond shall be supplied at the signing of the contract.
10. All bidders must comply with the requirements stated in the attached "Standard Insurance Requirements" sheet attached to this bid solicitation. Prior to contract executions/purchase order issuance, the successful bidder will be required to provide final insurance certificates which shall name Jefferson Parish as an additional insured in accordance with the instructions in the aforementioned "Standard Insurance Requirements" sheet.
11. A bid bond will be required with bid submission in the amount of 5% of the total bid, unless otherwise stated in the bid specifications. Acceptable forms shall be limited to cashier's check, certified check, or surety bid bond. All sureties must be in original format (no copies). If submitting a bid online, vendors must submit an electronic bid bond through the respective online clearinghouse bond management system(s) as indicated in the electronic bid solicitation on Central Auction House. No scanned paper copies of any bid bond will be accepted as part of the electronic bid submission.
12. This is a requirements contract to be provided on an as needed basis. JEFFERSON PARISH makes no representations on warranties with regard to minimum guaranteed quantities unless otherwise stated in the bid specifications.
13. Freight charges should be included in total cost when quoting. If not quoted FOB DELIVERED, freight must be quoted as a separate item. Bid may be rejected if not quoted FOB DELIVERED or if freight charges are not indicated on bid form.
14. **PUBLIC WORKS BIDS - Completed, Signed and Properly Notarized Affidavits Required;** This applies to all solicitations for construction, alteration or demolition of public buildings or projects, in conformity with the provisions contained in LSA-RS 38:2212.9, LSA-RS 38:2212.10, LSA-RS 38:2224, and Sec 2-923.1 of the Jefferson Parish Code of Ordinances. For bidding purposes, all bidders must submit with bid submission COMPLETED, SIGNED and PROPERLY NOTARIZED Affidavits, including: Non-Conviction Affidavit, Non-Collusion Affidavit, Campaign Contribution Affidavit, Debt Disclosures Affidavit and E-Verify Affidavit. For the convenience of vendors, all affidavits have been combined into one form entitled PUBLIC WORKS BID AFFIDAVIT. This affidavit must be submitted in its original format, and without material alteration, in order to be compliant and for the bid to be considered responsive. A scanned copy of the completed, signed and properly notarized affidavit may be submitted with the bid, however, the successful bidder must submit the original affidavit in its original format and without material alteration upon contract execution. Failure to comply will result in the bid submission being rejected as non-responsive. The Parish reserves the right to award bid to the next lowest responsive and responsible bidder in this event.
15. **NON PUBLIC WORK BIDS - Completed, Signed and Properly Notarized Affidavits Required** in conformity with the provisions contained in LSA - RS 38:2224 and Sec 2-923.1 of the Jefferson Parish Code of Ordinances. For bidding purposes, all bidders must submit with bid submission COMPLETED, SIGNED and PROPERLY NOTARIZED Affidavits, including: Non-Collusion Affidavit, Debt Disclosures Affidavit and Campaign Contribution Affidavit. For the convenience of vendors, all affidavits have been combined into one form entitled NON PUBLIC WORKS BID AFFIDAVIT. This affidavit must be submitted in its original format, and without material alteration, in order to be compliant and for the bid to be considered responsive. A scanned copy of the completed, signed and properly notarized affidavit may be submitted with the bid, however, the successful bidder must submit the original affidavit in its original format and without material alteration upon contract execution. Failure to comply will result in the bid submission being rejected as non-responsive. The Parish reserves the right to award bid to the next lowest responsive and responsible bidder in this event.
16. The ensuing contract for this bid solicitation may be eligible for FEMA reimbursement and/or Federal funding/reimbursement. As such, the referenced appendix will be applicable accordingly and shall be considered a part of the bid documents. All applicable certifications must be duly completed, signed and submitted with bid submission. Failure to submit applicable certifications with bid submission will result in bid rejection.

It shall be the duty of every parish officer, employee, department, agency, special district, board, and commission: and the duty of every contractor, subcontractor, and licensee of the parish, and the duty of every applicant for certification of eligibility for a parish contract or program, to cooperate with the Inspector General in any investigation, audit, inspection, performance review, or hearing pursuant to Jefferson Parish Code of Ordinances Section 2-155.10(19). By submitting a bid, vendor acknowledges this and will abide by all provisions of the referenced Jefferson Parish Code of Ordinances.



DATE: 10/16/2019

INVITATION TO BID  
THIS IS NOT AN ORDER

Page: 4

BID NO.: 50-00128487

**JEFFERSON PARISH**

PURCHASING DEPARTMENT  
P.O. BOX 9  
GRETNA, LA. 70054-0009  
504-364-2678

VENDOR: 22465

BUYER: DABRAHAM

As per LSA-RS 47:301 et seq., all governmental bodies are excluded from payment of sales taxes to any Louisiana taxing body. Quotations shall be based on F.O.B. Agency warehouse or jobsite, anywhere within the Parish as designated by the Purchasing Department.

JEFFERSON PARISH reserves the right to cancel all or any part of an order if not shipped promptly. No charges will be allowed for parking or cartage unless specified in quotation. The order must not be filled at a higher price than quoted. JEFFERSON PARISH reserves the right to cancel at any time and for any reason by issuing a THIRTY (30) day written notice to the contractor.

JEFFERSON PARISH is expecting all products to be new and all work to be done in workman-like manner, according to standard practices. Any deviations or alteration from the specifications must be indicated on the bid form for each item and upon request, product data for same must be submitted by the time specified by the Purchasing Department.

**DELIVERY: FOB JEFFERSON PARISH**

INDICATE DELIVERY DATE ON EQUIPMENT AND SUPPLIES

45 days

INDICATE STARTING TIME (IN DAYS) FOR CONSTRUCTION WORK

15 days

INDICATE COMPLETION TIME (IN DAYS) FOR CONSTRUCTION WORK

10 days

In the event that addenda are issued with this bid, bidders MUST acknowledge all addenda on the bid form. Bidder must acknowledge receipt of an addendum on the bid form as indicated. Failure to acknowledge any addendum on the bid form will result in bid rejection.

Acknowledge Receipt of Addenda: NUMBER: 0-  
NUMBER: 0-  
NUMBER: 0-  
NUMBER: 0-

LOUISIANA CONTRACTOR'S LICENSE NO.: (if applicable) 40326

**\*\*\* ALL BIDDERS MUST COMPLETE SECTION BELOW \*\*\***

FIRM NAME:

Alternative Signs & Graphics, LLC

SIGNATURE:

(Must be signed here)

PRINT OR TYPE NAME:

Michael Wilson

TITLE:

managing member

ADDRESS:

1301 Edwards Ave Ste C

CITY, STATE:

Harahan LA

ZIP:

70123

TELEPHONE:

504 734 9899

FAX:

504 734 9369

EMAIL ADDRESS:

mike@alternativesigns.com

TOTAL PRICE OF ALL BID ITEMS: \$ 13,950.00

DATE: 10/16/2019

Page: 5

## INVITATION TO BID FROM JEFFERSON PARISH - continued

BID NO.: 50-00128487

SEALED BID

| ITEM<br>NUMBER | QUANTITY | U/M | DESCRIPTION OF ARTICLES   | UNIT PRICE<br>QUOTED           | TOTALS                         |
|----------------|----------|-----|---|--------------------------------|--------------------------------|
| 1              | 1.00     | JOB | <p>Provide and install (1) new Polystyrene Monument Style Sign for the Department of Parkways</p> <p>0010 Labor, Materials, and Necessary Essentials to Provide and Install one (1) New Polystyrene Monument Style Sign</p> <p>PER THE ATTACHED SPECIFICATIONS AND PLANS</p> <p>Location of the Sign:<br/>Center Median of Bent Tree Blvd.<br/>at the intersection of LA 3134<br/>(Leo Kerner Parkway) in<br/>Marrero, LA</p> | <del>13,950.00</del> 13,950.00 | <del>13,950.00</del> 13,950.00 |
|                |          |     |   |                                |                                |



# **LABOR & MATERIALS TO INSTALL A MONUMENT STYLE SIGN**

**BID # 50-00128487**

## **Section 1.0 – Pre-Bid Conference:**

There will be no pre-bid conference for this bid. All prospective bidders are encouraged to visit the site prior to submitting a bid.

## **Section 2.0 – Scope:**

We extend this bid to cover all labor, materials, freight and necessary essentials to provide and install one (1) new polystyrene monument style sign, as per the associated plans, located in the center median of Bent Tree Boulevard at the intersection of LA 3134 (Leo Kerner Parkway) in Marrero, Louisiana.

## **Section 3.0 –License Requirements:**

The following Louisiana State license shall be required for this project:

- Class: Building Construction  
or
- Sub-Category: Landscape, Grading and Beautification  
or
- Specialty: Signs, Scoreboards, Displays, Billboards (Electrical & Non-Electrical)

## **Section 4.0 – Existing Site:**

The Contractor shall be responsible for removing any existing concrete and/or debris from the project location. A previous sign was located at the project site, but has been mostly removed. The existing concrete footer shall be removed as part of this bid. The existing electrical and site features shall remain. Minor grading of the finished site shall be required to ensure water is able to flow away from the new sign and foundation.

## **Section 5.0 – Bid Specifications:**

- Provide and install one (1) new polystyrene, breakaway, monument style sign in accordance with the associated plans.
- Work shall include a concrete foundation as specified by the associated plans.

- The Contractor shall be required to provide submittals on the polystyrene sign to the Jefferson Parish Parkways Department for approval prior to ordering the sign.
- No electrical work is included in this bid.
- No permits shall be required by the Contractor.
- The Contractor shall be responsible to return the site to its original condition once work is complete.

#### **Section 6.0 - Hours of Work:**

Work shall be performed during non-holiday weekdays between the hours of 8:00 am and 4:00 pm. The Contractor shall provide the Jefferson Parish Parkways Department with a minimum twenty four (24) notice prior to the start of work. Once the installation is complete, the Contractor shall contact the Jefferson Parish Parkways Department to schedule a final inspection of the work.

#### **Section 7.0 – Cleaning Area and Safety:**

The job site must be clean and free of all litter and debris daily and upon completion of the contract. The Contractor shall fence off his work when he is not on site working. Equipment and material storage shall not be permitted on site. Precautions must be exercised at all times to safeguard the welfare and safety of the general public, employees of Jefferson Parish, and other Parish officials.

#### **Section 8.0 – Warranty:**

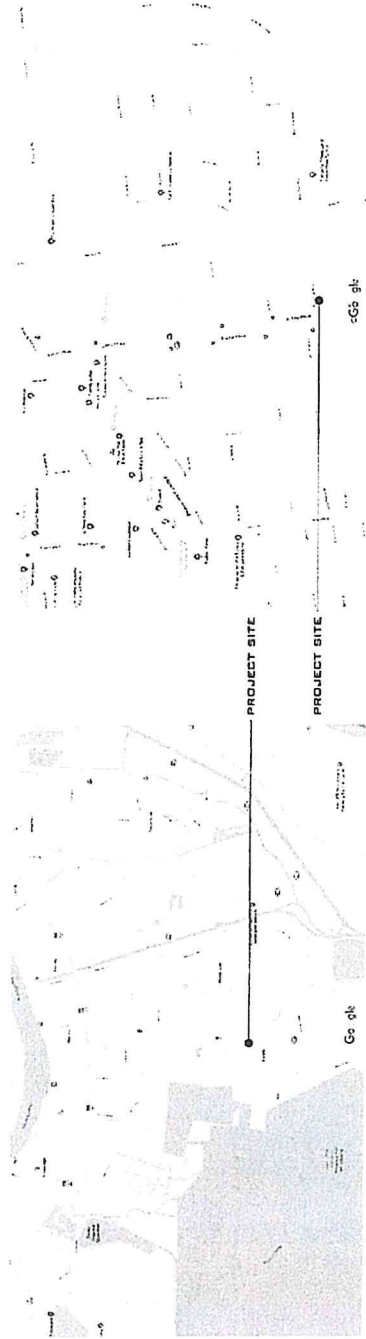
The Contractor shall warrant his materials and workmanship for a period of one (1) year after final acceptance of the project.

#### **Section 9.0 – Pre-Construction Conference and Notice to Proceed:**

A Pre-Construction Conference will not be necessary for this project. The Contractor shall provide the Jefferson Parish Parkways Department with a minimum twenty four (24) hour notice of when work will begin. A Jefferson Parish Parkways Department employee will meet the Contractor at the site to answer any questions. No work shall be performed until the successful bidder receives a written “Notice to Proceed” or “Purchase Order” from the Jefferson Parish.

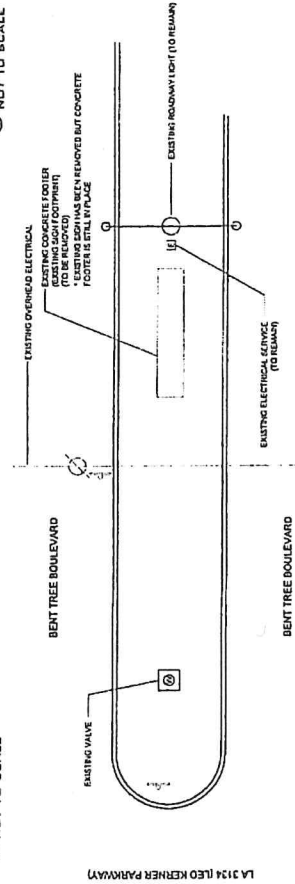
OCTOBER 2019

JEFFERSON PARISH COUNCIL DISTRICT 1  
BENT TREE SUBDIVISION  
SIGN



④ VICINITY MAP  
NOT TO SCALE

⑤ LOCATION MAP  
NOT TO SCALE



⑥ EXISTING SITE  
1" = 5'-0" (24x36)

IT IS RECOMMENDED THAT ALL  
INTERESTED BIDDERS VISIT THE SITE  
PRIOR TO SUBMITTING A BID

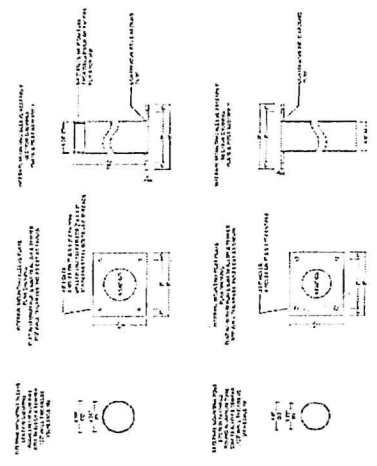
MARRERO, LOUISIANA 70072

**LAONE**  
1-800-272-3020

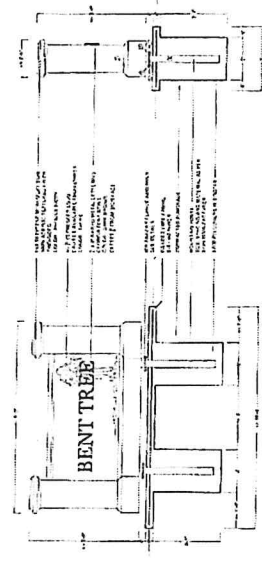
SHEET  
1  
OF 2

OCTOBER 2019

# JEFFERSON PARISH COUNCIL DISTRICT 1 BENT TREE SUBDIVISION SIGN



2/ BREAKAWAY DETAILS  
NOT TO SCALE



1. SIGN SHALL BE CONSTRUCTED OF ALUMINUM OR GALVALUM WITH A MINIMUM THICKNESS OF 1/8" (2.0mm) FOR THE SIGN FACE AND 1/4" (6.3mm) FOR THE SIGN MOUNTING STRUCTURE. THE SIGN SHALL BE MOUNTED ON A 4" X 4" X 1/2" ALUMINUM POST. THE SIGN SHALL BE MOUNTED ON A 4" X 4" X 1/2" ALUMINUM POST. THE SIGN SHALL BE MOUNTED ON A 4" X 4" X 1/2" ALUMINUM POST.



2. SIGN SHALL BE CONSTRUCTED OF ALUMINUM OR GALVALUM WITH A MINIMUM THICKNESS OF 1/8" (2.0mm) FOR THE SIGN FACE AND 1/4" (6.3mm) FOR THE SIGN MOUNTING STRUCTURE. THE SIGN SHALL BE MOUNTED ON A 4" X 4" X 1/2" ALUMINUM POST. THE SIGN SHALL BE MOUNTED ON A 4" X 4" X 1/2" ALUMINUM POST. THE SIGN SHALL BE MOUNTED ON A 4" X 4" X 1/2" ALUMINUM POST.

2/ 1/2" = 1'-0" (24X36)

MARRERO, LOUISIANA 70072



## **STANDARD INSURANCE REQUIREMENTS FOR BIDDING PURPOSES**

All required insurance under this bid shall conform to Jefferson Parish Resolution No. 113646 or No. 113647, as applicable. Contractors may not commence any work under any ensuing contract unless and until all required insurance and associated evidentiary requirements thereto have been met, along with any additional specifications contained in the **Invitation to Bid**. Except as where otherwise precluded by law, the Parish Attorney or his designee, with the concurrence of the Director of Risk Management or his designee, may agree on a case-by-case basis, to deviate from Jefferson Parish's standard insurance requirements, as provided in this Section. Vendors requesting deviation therefrom shall submit such requests in writing, along with compelling substantiation, to the Purchasing Department prior to the bid's due date. Any changes to the insurance requirements will be reflected in the bid specifications and addenda. Prior to contract execution and at all times thereafter during the term of such contract, contractors must provide and continuously maintain all coverages as required by the foregoing Resolutions, and the contract documents. Failure to do so shall be grounds for suspension, discontinuation or termination of the contract.

---

For bidding purposes, bidders must submit with bid submission a current (valid) insurance certificate evidencing the required coverages. Failure to comply will cause bid to be rejected. The current insurance certificate will be used for proof of insurance at time of evaluation. Thereafter, and prior to contract execution, the low bidder will be required to provide final insurance certificates to the Parish which shall name **the Jefferson Parish, its Districts Departments and Agencies under the direction of the Parish President and the Parish Council** as additional insureds regarding negligence by the contractor for the Commercial General Liability, Workmen's Compensation Insurance and the Comprehensive Automobile Liability policies. Additionally, said certificates should reflect the name of the Parish Department receiving goods and services and reference the respective Jefferson Parish bid number.

---

### **JEFFERSON PARISH REQUIRED STANDARD INSURANCE**

#### **☐ WORKER'S COMPENSATION INSURANCE**

As required by Louisiana State Statute, exception; Employer's Liability, Section B shall be \$1,000,000 per occurrence when Work is to be over water and involves maritime exposures to cover all employees not covered under the State Worker's Compensation Act, otherwise this limit shall be no less than \$500,000 per occurrence.

**Note: If your company is not required by law to carry workmen's compensation insurance, i.e. not a Louisiana company, sole employee of the company, then bidders must request a workmen's compensation insurance declaration affidavit prior to the bid opening date. This insurance declaration affidavit must be fully completed, signed, properly notarized and submitted with the bid. A scanned copy may be submitted with the bid; however, the successful bidder must submit the original affidavit in its original format and without material alteration upon contract execution. Failure to comply will result in the bid submission being**

rejected as non-responsive. The Parish reserves the right to award bid to the next lowest responsive and responsible bidder in this event.

☐ **COMMERCIAL GENERAL LIABILITY**

Shall provide limits not less than the following: \$1,000,000.00 Combined Single Limit per Occurrence for bodily injury and property damage.

☐ **COMPREHENSIVE AUTOMOBILE LIABILITY**

Bodily injury liability \$1,000,000.00 each person; \$1,000,000.00 each occurrence.  
Property Damage Liability \$1,000,000.00 each occurrence.

Note: This category may be omitted if bidders do not/will not utilize company vehicles for the project or do not possess company vehicles. Bidder must request an automobile insurance declaration affidavit prior to the bid opening date. This insurance declaration affidavit must be fully completed, signed, properly notarized and submitted with the bid. A scanned copy of the completed, signed and properly notarized affidavit may be submitted with the bid; however, the successful bidder must submit the original affidavit in its original format and without material alteration upon contract execution. Failure to comply will result in the bid submission being rejected as non-responsive. The Parish reserves the right to award bid to the next lowest responsive and responsible bidder in this event.

**DEDUCTIBLES** - The Parish Attorney with concurrence of the Director of Risk Management have waived the deductible section of the Terms and Conditions for all Invitations to Bid, until further notice.

**UMBRELLA LIABILITY COVERAGE**

An umbrella policy or excess may be used to meet minimum requirements.

**FOR CONSTRUCTION AND RENOVATION PROJECTS:**

The following are required unless otherwise specified in the bid. Such insurance is due upon contract execution.

1) **OWNER'S PROTECTIVE LIABILITY**

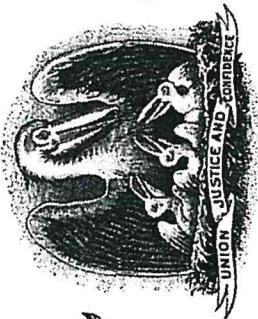
To be for the same limits of liability for bodily injury and property damage liability established for commercial general liability.

2) **BUILDER'S RISK INSURANCE**

The contractor shall maintain Builder's Risk Insurance at his own expense to insure both the owner (Parish of Jefferson) and contractor as their interest may appear.



# State of Louisiana



## State Licensing Board for Contractors

This is to Certify that:

ALTERNATIVE SIGNS & GRAPHICS, L.L.C.  
1301 Edwards Ave., Suite C  
Harahan, LA 70123

is duly licensed and entitled to practice the following classifications

ELECTRICAL WORK (STATEWIDE); SPECIALTY: SIGNS, SCOREBOARDS, DISPLAYS, BILLBOARDS  
(ELECTRICAL & NON-ELECTRICAL)



Witness our hand and seal of the Board dated,  
Baton Rouge, LA 21st day of February 2018

Will B. McCall Director

Lee Mallett Chairman

Andy Dumas Treasurer

Expiration Date: February 20, 2020

License No: 40326

This License Is Not Transferrable

FOR PUBLIC DISPLAY - NOT TRANSFERABLE

ISSUED BY

SHERIFF AND EX-OFFICIO TAX COLLECTOR-JEFFERSON PARISH, LOUISIANA

# 2019 Occupational License Tax



SIGN PARTNERS OF LOUISIANA  
ALTERNATIVE SIGNS & GRAPHICS LLC  
1301 EDWARDS AVE #C  
JEFFERSON LA 70123



License # 136829480

Account # 16184302

## Location Address

1301 EDWARDS AVE #C  
JEFFERSON, LA

Business Class 323113

Commercial Screen Printing

License Class 1740

Retail Mdse/Service/Rental/etc

| Tax      | Interest | Penalty | Other  | Total    | Payment  |
|----------|----------|---------|--------|----------|----------|
| \$800.00 | \$0.00   | \$0.00  | \$0.00 | \$800.00 | \$800.00 |

JOSEPH P. LOPINTO, III  
SHERIFF & TAX COLLECTOR

Gregory A. Ruppert, Director  
Bureau of Revenue and Taxation

Pursuant to Jefferson Parish Code of Ordinances Chapter 35, Article VI, Section 35-153, the issuance of this occupational license to the person or firm named hereon is a receipt for payment of said tax and entitles the recipient to operate a business at the location shown, provided said business is operated within the confines of the application thereof, and does not violate any parish or state criminal, health, or zoning laws. This license will expire December 31, 2019.

**RENEWAL APPLICATIONS ARE DUE PRIOR TO MARCH 1.**



## Request for Taxpayer Identification Number and Certification

► Go to [www.irs.gov/FormW9](http://www.irs.gov/FormW9) for instructions and the latest information.

Give Form to the  
requester. Do not  
send to the IRS.

1 Name (as shown on your income tax return). Name is required on this line; do not leave this line blank.

**Alternative Signs & Graphics, L.L.C**

2 Business name/disregarded entity name, if different from above

3 Check appropriate box for federal tax classification of the person whose name is entered on line 1. Check only one of the following seven boxes.

☐ Individual/sole proprietor or single-member LLC

☐ C Corporation

☐ S Corporation

☐ Partnership

☐ Trust/estate

☒ Limited liability company. Enter the tax classification (C=C corporation, S=S corporation, P=Partnership) ► S  
**Note:** Check the appropriate box in the line above for the tax classification of the single-member owner. Do not check LLC if the LLC is classified as a single-member LLC that is disregarded from the owner unless the owner of the LLC is another LLC that is not disregarded from the owner for U.S. federal tax purposes. Otherwise, a single-member LLC that is disregarded from the owner should check the appropriate box for the tax classification of its owner.

☐ Other (see instructions) ►

4 Exemptions (codes apply only to certain entities, not individuals; see instructions on page 3):

Exempt payee code (if any) \_\_\_\_\_

Exemption from FATCA reporting code (if any) \_\_\_\_\_

(Applies to accounts maintained outside the U.S.)

5 Address (number, street, and apt. or suite no.) See instructions.

**1301 Edwards Ave., Suite C**

6 City, state, and ZIP code

**Harahan, LA 70123**

Requester's name and address (optional)

7 List account number(s) here (optional)

Print or type.  
See Specific Instructions on page 3.

### Part I Taxpayer Identification Number (TIN)

Enter your TIN in the appropriate box. The TIN provided must match the name given on line 1 to avoid backup withholding. For individuals, this is generally your social security number (SSN). However, for a resident alien, sole proprietor, or disregarded entity, see the instructions for Part I, later. For other entities, it is your employer identification number (EIN). If you do not have a number, see *How to get a TIN*, later.

**Note:** If the account is in more than one name, see the instructions for line 1. Also see *What Name and Number To Give the Requester* for guidelines on whose number to enter.

Social security number

\_\_\_\_ - \_\_\_\_ - \_\_\_\_

or

Employer identification number

9 4 - 3 4 2 8 3 7 6

### Part II Certification

Under penalties of perjury, I certify that:

- The number shown on this form is my correct taxpayer identification number (or I am waiting for a number to be issued to me); and
- I am not subject to backup withholding because: (a) I am exempt from backup withholding, or (b) I have not been notified by the Internal Revenue Service (IRS) that I am subject to backup withholding as a result of a failure to report all interest or dividends, or (c) the IRS has notified me that I am no longer subject to backup withholding; and
- I am a U.S. citizen or other U.S. person (defined below); and
- The FATCA code(s) entered on this form (if any) indicating that I am exempt from FATCA reporting is correct.

**Certification Instructions.** You must cross out item 2 above if you have been notified by the IRS that you are currently subject to backup withholding because you have failed to report all interest and dividends on your tax return. For real estate transactions, item 2 does not apply. For mortgage interest paid, acquisition or abandonment of secured property, cancellation of debt, contributions to an individual retirement arrangement (IRA), and generally, payments other than interest and dividends, you are not required to sign the certification, but you must provide your correct TIN. See the instructions for Part II, later.

Sign  
Here

Signature of  
U.S. person ►

Date ►

1/9/2019

## General Instructions

Section references are to the Internal Revenue Code unless otherwise noted.

**Future developments.** For the latest information about developments related to Form W-9 and its instructions, such as legislation enacted after they were published, go to [www.irs.gov/FormW9](http://www.irs.gov/FormW9).

## Purpose of Form

An individual or entity (Form W-9 requester) who is required to file an information return with the IRS must obtain your correct taxpayer identification number (TIN) which may be your social security number (SSN), individual taxpayer identification number (ITIN), adoption taxpayer identification number (ATIN), or employer identification number (EIN), to report on an information return the amount paid to you, or other amount reportable on an information return. Examples of information returns include, but are not limited to, the following.

- Form 1099-INT (interest earned or paid)

- Form 1099-DIV (dividends, including those from stocks or mutual funds)
- Form 1099-MISC (various types of income, prizes, awards, or gross proceeds)
- Form 1099-B (stock or mutual fund sales and certain other transactions by brokers)
- Form 1099-S (proceeds from real estate transactions)
- Form 1099-K (merchant card and third party network transactions)
- Form 1098 (home mortgage interest), 1098-E (student loan interest), 1098-T (tuition)
- Form 1099-C (canceled debt)
- Form 1099-A (acquisition or abandonment of secured property)

Use Form W-9 only if you are a U.S. person (including a resident alien), to provide your correct TIN.

If you do not return Form W-9 to the requester with a TIN, you might be subject to backup withholding. See *What is backup withholding*, later.



# CERTIFICATE OF LIABILITY INSURANCE

DATE (MM/DD/YYYY)  
10/23/2019

THIS CERTIFICATE IS ISSUED AS A MATTER OF INFORMATION ONLY AND CONFERS NO RIGHTS UPON THE CERTIFICATE HOLDER. THIS CERTIFICATE DOES NOT AFFIRMATIVELY OR NEGATIVELY AMEND, EXTEND OR ALTER THE COVERAGE AFFORDED BY THE POLICIES BELOW. THIS CERTIFICATE OF INSURANCE DOES NOT CONSTITUTE A CONTRACT BETWEEN THE ISSUING INSURER(S), AUTHORIZED REPRESENTATIVE OR PRODUCER, AND THE CERTIFICATE HOLDER.

**IMPORTANT:** If the certificate holder is an ADDITIONAL INSURED, the policy(ies) must have ADDITIONAL INSURED provisions or be endorsed. If SUBROGATION IS WAIVED, subject to the terms and conditions of the policy, certain policies may require an endorsement. A statement on this certificate does not confer rights to the certificate holder in lieu of such endorsement(s).

|  |               |  |  |   |               |   |  |   |  |                                     |       |  |       |                   |  |
|--|---------------|--|--|---|---------------|---|--|---|--|-------------------------------------|-------|--|-------|-------------------|--|
| <b>PRODUCER</b><br>Eagan Insurance Agency, LLC<br>2629 N. Causeway Blvd.<br>P. O. Box 8590<br>Metairie LA 70002                              |               | <b>CONTACT NAME:</b> Julie Bell<br><b>PHONE (A/C, No, Ext):</b> (504) 836-9600<br><b>E-MAIL ADDRESS:</b> bellj@eaganins.com<br><b>FAX (A/C, No):</b> (504) 836-9621  |  |   |               |   |  |   |  |                                     |       |  |       |                   |  |
| <b>INSURED</b><br>Alternative Signs & Graphics, LLC<br>DBA: Sign Partners of Louisiana<br>1301 Edwards Ave., Suite C<br>New Orleans LA 70123 |               | <b>INSURER(S) AFFORDING COVERAGE</b><br><table border="1"><tr><td><b>INSURER A:</b> AmTrust Insurance of Kansas, Inc.</td><td><b>NAIC #</b></td></tr><tr><td><b>INSURER B:</b> Wesco Insurance Company</td><td></td></tr><tr><td><b>INSURER C:</b> National Union Fire Ins. Co</td><td></td></tr><tr><td><b>INSURER D:</b> LA Work Comp Corp</td><td>22350</td></tr><tr><td><b>INSURER E:</b> Progressive Paloverde Ins. Co.</td><td>44695</td></tr><tr><td><b>INSURER F:</b></td><td></td></tr></table> |  | <b>INSURER A:</b> AmTrust Insurance of Kansas, Inc. | <b>NAIC #</b> | <b>INSURER B:</b> Wesco Insurance Company |  | <b>INSURER C:</b> National Union Fire Ins. Co |  | <b>INSURER D:</b> LA Work Comp Corp | 22350 | <b>INSURER E:</b> Progressive Paloverde Ins. Co. | 44695 | <b>INSURER F:</b> |  |
| <b>INSURER A:</b> AmTrust Insurance of Kansas, Inc.  | <b>NAIC #</b> |  |  |   |               |   |  |   |  |                                     |       |  |       |                   |  |
| <b>INSURER B:</b> Wesco Insurance Company  |               |  |  |   |               |   |  |   |  |                                     |       |  |       |                   |  |
| <b>INSURER C:</b> National Union Fire Ins. Co  |               |  |  |   |               |   |  |   |  |                                     |       |  |       |                   |  |
| <b>INSURER D:</b> LA Work Comp Corp  | 22350         |  |  |   |               |   |  |   |  |                                     |       |  |       |                   |  |
| <b>INSURER E:</b> Progressive Paloverde Ins. Co.   | 44695         |  |  |   |               |   |  |   |  |                                     |       |  |       |                   |  |
| <b>INSURER F:</b>  |               |  |  |   |               |   |  |   |  |                                     |       |  |       |                   |  |

**COVERAGES** **CERTIFICATE NUMBER:** 19-20 GL/Auto/WVC/UMB **REVISION NUMBER:**

THIS IS TO CERTIFY THAT THE POLICIES OF INSURANCE LISTED BELOW HAVE BEEN ISSUED TO THE INSURED NAMED ABOVE FOR THE POLICY PERIOD INDICATED. NOTWITHSTANDING ANY REQUIREMENT, TERM OR CONDITION OF ANY CONTRACT OR OTHER DOCUMENT WITH RESPECT TO WHICH THIS CERTIFICATE MAY BE ISSUED OR MAY PERTAIN, THE INSURANCE AFFORDED BY THE POLICIES DESCRIBED HEREIN IS SUBJECT TO ALL THE TERMS, EXCLUSIONS AND CONDITIONS OF SUCH POLICIES. LIMITS SHOWN MAY HAVE BEEN REDUCED BY PAID CLAIMS.

| INSR LTR | TYPE OF INSURANCE  | ADDL INSD | SUBR WVD   | POLICY NUMBER | POLICY EFF (MM/DD/YYYY) | POLICY EXP (MM/DD/YYYY) | LIMITS  |
|----------|--|-----------|--|---------------|-------------------------|-------------------------|---|
| A        | <input checked="" type="checkbox"/> COMMERCIAL GENERAL LIABILITY<br><input type="checkbox"/> CLAIMS-MADE <input checked="" type="checkbox"/> OCCUR<br>GEN'L AGGREGATE LIMIT APPLIES PER:<br><input type="checkbox"/> POLICY <input checked="" type="checkbox"/> PRO-JECT <input checked="" type="checkbox"/> LOC<br>OTHER: |           |  | WPP163051601  | 06/06/2019              | 06/06/2020              | EACH OCCURRENCE \$ 1,000,000  |
|          |  |           | DAMAGE TO RENTED PREMISES (Ea occurrence) \$ 100,000 |               |                         |                         |   |
|          |  |           | MED EXP (Any one person) \$ 10,000                   |               |                         |                         |   |
|          |  |           | PERSONAL & ADV INJURY \$ 1,000,000                   |               |                         |                         |   |
| B        | <input checked="" type="checkbox"/> AUTOMOBILE LIABILITY<br><input checked="" type="checkbox"/> ANY AUTO<br>OWNED AUTOS ONLY <input type="checkbox"/> SCHEDULED AUTOS<br>HIRED AUTOS ONLY <input type="checkbox"/> NON-OWNED AUTOS ONLY  |           |  | FCA100097101  | 06/06/2019              | 06/06/2020              | COMBINED SINGLE LIMIT (Ea accident) \$ 1,000,000  |
|          |  |           | BODILY INJURY (Per person) \$                        |               |                         |                         |   |
|          |  |           | BODILY INJURY (Per accident) \$                      |               |                         |                         |   |
|          |  |           | PROPERTY DAMAGE (Per accident) \$                    |               |                         |                         |   |
| C        | <input checked="" type="checkbox"/> UMBRELLA LIAB <input checked="" type="checkbox"/> OCCUR<br>EXCESS LIAB <input type="checkbox"/> CLAIMS-MADE<br>DED <input checked="" type="checkbox"/> RETENTION \$ 10,000   |           |  | EBU035882760  | 06/06/2019              | 06/06/2020              | Uninsured motorist \$ 1,000,000   |
|          |  |           | EACH OCCURRENCE \$ 1,000,000                         |               |                         |                         |   |
|          |  |           | AGGREGATE \$ 1,000,000                               |               |                         |                         |   |
|          |  |           | \$   |               |                         |                         |   |
| D        | WORKERS COMPENSATION AND EMPLOYERS' LIABILITY<br>ANY PROPRIETOR/PARTNER/EXECUTIVE OFFICER/MEMBER EXCLUDED? (Mandatory in NH)<br>If yes, describe under DESCRIPTION OF OPERATIONS below   | Y/N<br>Y  | N/A  | 84720         | 02/20/2019              | 02/20/2020              | <input checked="" type="checkbox"/> PER STATUTE <input type="checkbox"/> OTH-ER                   |
|          |  |           | E.L. EACH ACCIDENT \$ 1,000,000                      |               |                         |                         |   |
|          |  |           | E.L. DISEASE - EA EMPLOYEE \$ 1,000,000              |               |                         |                         |   |
|          |  |           | E.L. DISEASE - POLICY LIMIT \$ 1,000,000             |               |                         |                         |   |
| E        | AUTO LIAB - 2015 Ford F750 #0598   |           |  | 04068608-4    | 08/14/2019              | 02/14/2020              | Liability \$1,000,000<br>Uninsured Motorists \$ 500,000<br>Deductible - comp/coll \$1,000/\$1,000 |

DESCRIPTION OF OPERATIONS / LOCATIONS / VEHICLES (ACORD 101, Additional Remarks Schedule, may be attached if more space is required)

RE: Bid # 50-00128487. Blanket Additional Insured including Primary & Non-Contributory and Blanket Waiver of Subrogation in respects to the General Liability and Auto Liability if required by written contract. Blanket Waiver of Subrogation in respects to the Workers Comp if required by written contract.

|  |  |
|--|--|
| <b>CERTIFICATE HOLDER</b><br>Jefferson Parish Purchasing Department<br>P.O. Box 9<br>Gretna LA | <b>CANCELLATION</b><br>SHOULD ANY OF THE ABOVE DESCRIBED POLICIES BE CANCELLED BEFORE THE EXPIRATION DATE THEREOF, NOTICE WILL BE DELIVERED IN ACCORDANCE WITH THE POLICY PROVISIONS.<br>AUTHORIZED REPRESENTATIVE<br> |
|--|--|

© 1988-2015 ACORD CORPORATION. All rights reserved.



Due: 10/28/17  
At: 11:00 AM  
Horus

**BID/RFP RECEIPT**

Receipt of Bid/RFP Proposal No. 50-128487

From: Alternative Signs & Graphics

Company's Name

Person Received Bid: Sidney Duffey

Number of Envelopes/Boxes Received: 1

JEFFERSON PARISH  
PURCHASING

2019 OCT 25 PM 1:42

602104530

Jefferson Parish Purchasing Department  
1221 Elmwood Park Blvd.  
Suite 404 – Yenni Bldg.  
Jefferson, LA 70121



Alternative Signs & Graphics, L.L.C.  
1301 Edwards Ave., Suite C  
Harahan, LA 70123  
Vendor #: 22465  
State License #: 40326

Jefferson Parish Purch  
Department  
P.O. Box 9  
Gretna, LA 70054

BID #: 50-0012848  
BUYER: DABRAHAM