



# SPECIFICATIONS FOR VALVES

Product of Italy

## Description:

Lead-Free Full Port Threaded Brass Ball Valve  
Available in 1/2" IPS to 2" IPS  
Two-Piece, Lead-Free Forged Brass Construction  
Blowout-Proof/Tamper-Proof Stem  
Removable Lever Handle Rotates 180°  
Chrome-Plated Brass Ball

## Performance:

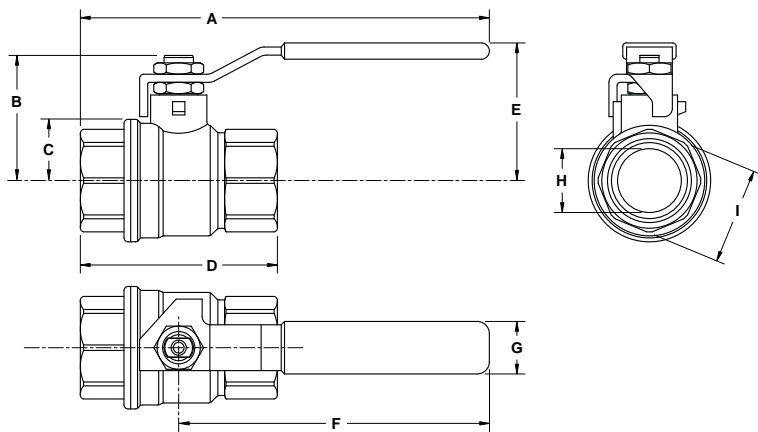
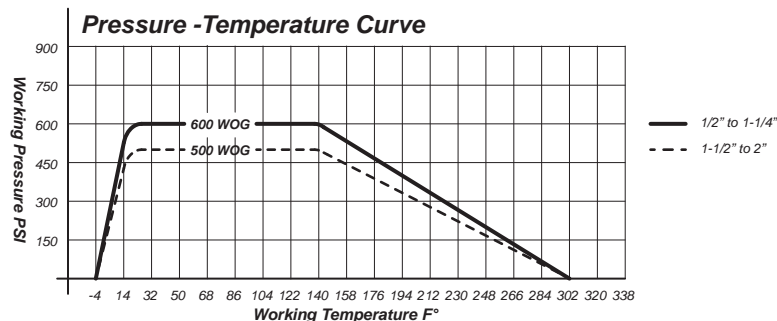
Rated for 1/2 PSIG & 5 PSI Gas  
Cold Working Pressure (WOG) 600 PSI (500 PSI 1-1/2" to 2")  
Steam Applications (WSP) 150 PSI  
Working Temperature Range -4°F to 248°F

## Compliance:

ANSI Z21.15 & CSA Can 1-9.1 for 1/2 PSIG Gas  
ANSI B16.44 & GCA CR91-002 for 5 PSI Gas  
UL-125 & ULC-C125 for 600 PSI Gas (500 PSI 1-1/2" to 2")  
UL-842 & UL-C842 for 600 PSI Gas (500 PSI 1-1/2" to 2")  
UL-258 & UL-C258-03 for 400 PSI Water (250 PSI 1-1/4" to 2")  
FM 1140 175 PSI for Water (Excludes 2")  
NSF Standard 61-G & CA Health and Safety Code 116875  
MSS SP-110 (Design) & ASME B1.20.1 (Pipe Threads)



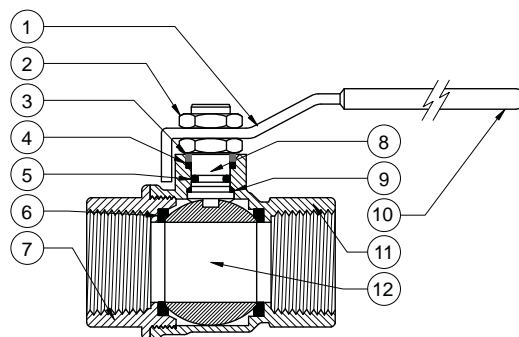
Models 275157 to 275162



Premier Full Port IPS Ball Valves

All Dimensions are Nominal.

Model	Size	A	B	C	D	E	F	G	H	I
275157	1/2"	4-1/2"	1-1/4"	1/2"	2-1/4"	1-1/2"	3-3/8"	5/8"	0.57"	1"
275158	3/4"	4-1/2"	1-1/2"	3/4"	2-3/8"	1-3/4"	3-3/8"	5/8"	0.75"	1-1/4"
275159	1"	6-1/4"	2"	1"	3"	2"	4-3/4"	3/4"	0.94"	1-1/2"
275160	1-1/4"	6-1/2"	2-1/4"	1-1/8"	3-1/2"	2-1/4"	4-3/4"	3/4"	1.24"	2"
275161	1-1/2"	8-3/8"	2-1/2"	1-1/2"	4"	3"	6-1/2"	1"	1.49"	2-1/8"
275162	2"	8-5/8"	2-7/8"	1-3/4"	4-1/2"	3-1/4"	6-1/2"	1"	1.96"	2-5/8"



No.	Part	Material	Qty
1.	Handle	Zinc-Plated Steel	1
2.	Nut	Zinc-Plated Steel	2
3.	Thrust Washer	C38500 Brass	1
4.	Upper Seal	PTFE	1
5.	O-Ring	NBR	1
6.	Ball Seal	PTFE	2
7.	End Connection	CW510L Brass	1
8.	Stem	CW510L Brass	1
9.	Lower Seal	PTFE	1
10.	Handle Sleeve	PVC	1
11.	Body	CW510L Brass	1
12.	Ball	CW510L Brass	1

CAUTION: Cross-tightening during installation can damage this valve. Tighten only from the valve side being installed on the pipe.

MFG Model Series 9600NL