



**IDEAL  
ELECTRIC**

**Q20-0401**

REVISION  
**00**

## COMMERCIAL AND TECHNICAL QUOTATION

DATE ISSUED  
DEC / 03 / 2020

<b>PROJECT NAME / REFERENCE</b>	5000132731 / ONE TIME PURCHASE OF ONE MEDIUM VOLTAGE, 3-PHASE VERTICAL INDUCTION MOTOR FOR THE DEPARTMENT OF DRAINAGE		
<b>CUSTOMER</b>	Jefferson Parish Purchasing Department	<b>PHONE</b>	504-364-2684
<b>CUSTOMER CONTACT</b>	Donna Reamey	<b>EMAIL</b>	Dreamey@Jeffparish.net

Dear Donna,

Thank you for this opportunity. We are pleased to offer our technical proposal for the electric motor rehabilitation for the above referenced project.

If you have any questions, or if I can be of assistance in any way, please feel free to contact me.

Sincerely,

Stephen Waite  
Vice President-Sales

REV NO	DATE	PREPARED BY	REV DESCRIPTION
00	12/3/2020	SW	Initial Quotation

<b>CONFIDENTIAL</b>	DOCUMENT Form No. MKTFM-0010	REVISION B FEB / 02 / 2019	1st ISSUE AUG / 03 / 2018	JOB NUMBER N/A	SHEET SCALE N/A	SHEET SIZE LTR
THIS DOCUMENT IS CONFIDENTIAL AND CONTAINS THE PROPRIETARY PROPERTY OF IDEAL ELECTRIC COMPANY (IDEAL) WHICH SHALL NOT BE USED OR DISCLOSED TO OTHERS, EXCEPT WITH THE EXPRESS WRITTEN PERMISSION OF IDEAL. THIS IS UNPUBLISHED WORK. ©2019 IDEAL ELECTRIC POWER CO. ALL RIGHTS ARE RESERVED						SHEET <b>1 of 6</b>



**IDEAL  
ELECTRIC**

**Q20-0401**

REVISION  
**00**

## COMMERCIAL AND TECHNICAL QUOTATION

DATE ISSUED  
DEC / 03 / 2020


### TABLE OF CONTENTS

1.0	PREFACE .....	2
2.0	PROPOSAL REQUIREMENTS CHECKLIST .....	3
3.0	SCOPE OF SUPPLY .....	4
4.0	SPECIFICATION RECEIVED AND REVIEWED .....	4
5.0	COMMENTS AND CLARIFICATIONS .....	4
6.0	PRICING .....	5
7.0	COMMERCIAL CONDITIONS .....	6

#### 1.0 PREFACE

IDEAL ELECTRIC COMPANY (IDEAL) is pleased to provide this Quotation for the herein mentioned equipment, materials and services prepared based on information received from (PURCHASER).

IDEAL requests the PURCHASER to consider any information contained in this document as strictly confidential and shall not be disclosed to third parties without our prior written consent from IDEAL. Such disclosure may have irrevocable impacts on our business.

CONFIDENTIAL	DOCUMENT Form No. MKTFM-0010	REVISION B FEB / 02 / 2019	1st ISSUE AUG / 03 / 2018	JOB NUMBER N/A	SHEET SCALE N/A	SHEET SIZE LTR
THIS DOCUMENT IS CONFIDENTIAL AND CONTAINS THE PROPRIETARY PROPERTY OF IDEAL ELECTRIC COMPANY (IDEAL) WHICH SHALL NOT BE USED OR DISCLOSED TO OTHERS, EXCEPT WITH THE EXPRESS WRITTEN PERMISSION OF IDEAL. THIS IS UNPUBLISHED WORK. ©2019 IDEAL ELECTRIC POWER CO. ALL RIGHTS ARE RESERVED						SHEET <b>2 of 6</b>
formerly known as	 <b>HYUNDAI IDEAL</b> ELECTRIC CO.	Ideal Electric Power Co. 330 East First Street, Mansfield, OH 44902		<b>WEB</b> theidealelectric.com	<b>PHONE</b> +1 (419) 522-3611	<b>FAX</b> +1 (419) 522-9386



**IDEAL  
ELECTRIC**

**Q20-0401**


REVISION  
**00**

## COMMERCIAL AND TECHNICAL QUOTATION

DATE ISSUED  
DEC /03/ 2020

### 2.0 PROPOSAL REQUIREMENTS CHECKLIST

Proposal Cover Letter on company letterhead listing what is included in the proposal and the date the vendor visited the site.	IDEAL Electric's Account Manager, Chris Hogg, visited the site on 9/23/2020 with Ben Lepine.
Product Data as specified above.	IDEAL Electric is providing a form fit function replacement of the existing IDEAL Electric motor. All performance of the existing motor will be met or exceeded.
Shop Drawings as specified above.	IDEAL Electric is providing a form fit function replacement of the existing IDEAL Electric motor. All critical dimension of the existing motor will be met.
Weight of each packaged unit.	Estimated weight is 24,500 lbs.
Bill of material with all optional features listed.	See section 4.0 below.
Any exceptions or clarifications taken to this specification.	See section 5.0 below.
Estimated lead time for equipment.	See bid form.
Price.	See bid form.
Warranty information.	IDEAL is providing an extended warranty valid for five years from the date of delivery.
Written Guarantee	IDEAL guarantees the proposed motor will operate as a direct replacement to the motor scheduled for removal.

CONFIDENTIAL	DOCUMENT Form No. MKTFM-0010	REVISION B FEB / 02 / 2019	1st ISSUE AUG / 03 / 2018	JOB NUMBER N/A	SHEET SCALE N/A	SHEET SIZE LTR
THIS DOCUMENT IS CONFIDENTIAL AND CONTAINS THE PROPRIETARY PROPERTY OF IDEAL ELECTRIC COMPANY (IDEAL) WHICH SHALL NOT BE USED OR DISCLOSED TO OTHERS, EXCEPT WITH THE EXPRESS WRITTEN PERMISSION OF IDEAL. THIS IS UNPUBLISHED WORK. ©2019 IDEAL ELECTRIC POWER CO. ALL RIGHTS ARE RESERVED						SHEET <b>3 of 6</b>
formerly known as	 <b>HYUNDAI IDEAL</b> ELECTRIC CO.	Ideal Electric Power Co. 330 East First Street, Mansfield, OH 44902		WEB theidealelectric.com	PHONE +1 (419) 522-3611	FAX +1 (419) 522-9386



**IDEAL  
ELECTRIC**

**Q20-0401**

REVISION  
**00**

## COMMERCIAL AND TECHNICAL QUOTATION

DATE ISSUED  
DEC / 03 / 2020

### 3.0 SCOPE OF SUPPLY

- Form, fit, functional replacement for IDEAL Electric's induction motor serial number 322440
  - Frame V11320-23
  - 700 Hp
  - 4160 V
  - 22 Pole
  - 1.15 SF
  - Winding RTDs
  - Bearing temperature detector: Provisions for existing instrumentation
  - Space heaters
  - Non-reverse ratchet
  - Stainless steel hardware
  - Power factor correction capacitors
  - Testing as specified
  - Extended IDEAL warranty to five years from delivery
  - Long term storage crating

### 4.0 SPECIFICATION RECEIVED AND REVIEWED

The following specifications and documents were provided to IDEAL for our review and comment:


5000132731 ONE TIME PURCHASE OF ONE MEDIUM VOLTAGE, 3-PHASE VERTICAL INDUCTION MOTOR FOR THE DEPARTMENT OF DRAINAGE, dated 18-Nov-2020 01:16:55 pm

Any specification received after this quotation date can impact delivery of submittal drawings, delivery of equipment, and pricing.

### 5.0 COMMENTS AND CLARIFICATIONS

5000132731 ONE TIME PURCHASE OF ONE MEDIUM VOLTAGE, 3-PHASE VERTICAL INDUCTION MOTOR FOR THE DEPARTMENT OF DRAINAGE, dated 18-Nov-2020 01:16:55 pm

- IDEAL has no comments or clarifications

CONFIDENTIAL	DOCUMENT Form No. MKTFM-0010	REVISION B FEB / 02 / 2019	1st ISSUE AUG / 03 / 2018	JOB NUMBER N/A	SHEET SCALE N/A	SHEET SIZE LTR
THIS DOCUMENT IS CONFIDENTIAL AND CONTAINS THE PROPRIETARY PROPERTY OF IDEAL ELECTRIC COMPANY (IDEAL) WHICH SHALL NOT BE USED OR DISCLOSED TO OTHERS, EXCEPT WITH THE EXPRESS WRITTEN PERMISSION OF IDEAL. THIS IS UNPUBLISHED WORK. ©2019 IDEAL ELECTRIC POWER CO. ALL RIGHTS ARE RESERVED						SHEET <b>4 of 6</b>
formerly known as	 <b>HYUNDAI IDEAL</b> ELECTRIC CO.	Ideal Electric Power Co. 330 East First Street, Mansfield, OH 44902		WEB theidealelectric.com	PHONE +1 (419) 522-3611	FAX +1 (419) 522-9386



**IDEAL  
ELECTRIC**

**Q20-0401**

REVISION  
**00**

## COMMERCIAL AND TECHNICAL QUOTATION

DATE ISSUED  
DEC /03/ 2020

### 6.0 PRICING

Item	Description	Qty	Weeks	Price per unit (US\$)	Total Price (US\$)
1	0001 - Material Purchase Only of one (1) new medium voltage, 3-phase vertical induction motor intended for use in a drainage pump drive application, rated for use in the environment in which it will be installed by Parish.	1	See Bid Form	See Bid Form	See Bid Form

CONFIDENTIAL	DOCUMENT Form No. MKTFM-0010	REVISION B FEB / 02 / 2019	1st ISSUE AUG / 03 / 2018	JOB NUMBER N/A	SHEET SCALE N/A	SHEET SIZE LTR
THIS DOCUMENT IS CONFIDENTIAL AND CONTAINS THE PROPRIETARY PROPERTY OF IDEAL ELECTRIC COMPANY (IDEAL) WHICH SHALL NOT BE USED OR DISCLOSED TO OTHERS, EXCEPT WITH THE EXPRESS WRITTEN PERMISSION OF IDEAL. THIS IS UNPUBLISHED WORK. ©2019 IDEAL ELECTRIC POWER CO. ALL RIGHTS ARE RESERVED						SHEET <b>5 of 6</b>



**IDEAL  
ELECTRIC**

**Q20-0401**

REVISION  
**00**

## COMMERCIAL AND TECHNICAL QUOTATION

DATE ISSUED  
DEC /03/ 2020

### 7.0 COMMERCIAL CONDITIONS

IDEAL ELECTRIC is pleased to provide this Quotation to you on the equipment, materials or services subject to the following terms and conditions:

**PRICING:** Unless otherwise noted, prices quoted herein are firm subject to the following conditions: Pricing is valid for 45 days from the date of this offer.


**DELIVERY** terms quoted is F.O.B.:  
Suburban Pump Station Warehouse  
Jefferson Parish Drainage Dept.  
4800 Lake Villa Dr.  
Metairie, LA 70006

**PAYMENTS:** PAYMENTS SHALL BE DUE AS FOLLOWS (unless otherwise negotiated):

- 60% with purchase order
- 40% upon notification of readiness to ship

**WARRANTY:** Ideal Electric Company Standard Warranty shall apply unless otherwise noted. Order acceptance shall be confirmed only by verified order acceptance. Deliveries are contingent on delays beyond our control.

**TERMS AND CONDITIONS:** UNLESS OTHERWISE NOTED, IDEAL ELECTRIC COMPANY GENERAL TERMS AND CONDITIONS OF SALE APPLY TO THIS QUOTATION, SUPERSEDE ALL CONDITIONS WHICH MAY APPEAR IN ANY CUSTOMER FORMS AND ARE AVAILABLE FOR REVIEW ON OUR WEBSITE.

CONFIDENTIAL	DOCUMENT Form No. MKTFM-0010	REVISION B FEB / 02 / 2019	1st ISSUE AUG / 03 / 2018	JOB NUMBER N/A	SHEET SCALE N/A	SHEET SIZE LTR
THIS DOCUMENT IS CONFIDENTIAL AND CONTAINS THE PROPRIETARY PROPERTY OF IDEAL ELECTRIC COMPANY (IDEAL) WHICH SHALL NOT BE USED OR DISCLOSED TO OTHERS, EXCEPT WITH THE EXPRESS WRITTEN PERMISSION OF IDEAL. THIS IS UNPUBLISHED WORK. ©2019 IDEAL ELECTRIC POWER CO. ALL RIGHTS ARE RESERVED						SHEET <b>6 of 6</b>
formerly known as	 <b>HYUNDAI IDEAL</b> ELECTRIC CO.	Ideal Electric Power Co. 330 East First Street, Mansfield, OH 44902		WEB theidealelectric.com	PHONE +1 (419) 522-3611	FAX +1 (419) 522-9386



## INDUCTION MOTOR DATA

### Nameplate Data

Frame	Type	HP	Volts	Phase	Hz	RPM
V11320-23	IM	700	4160	3	60	322

FL Amps	Temp. Rise	Amb. Temp.	Insul Class	Duty	SF
112	90° C	40° C	F	Cont	1.15

### Performance Data

% Load	25	50	75	100	115
Current (amps)	57	70	88	112	129
Power Factor %	36.6	56.8	66.7	70.4	70.5
Efficiency %	85.9	91.0	92.0	91.7	91.0
RPM	325.8	324.5	323.1	321.3	319.9

With 300 kVA PF correction capacitor

Current (amps)	23.8	42.8	63.4	87.0	103.7
Power Factor %	87.7	92.8	92.6	90.2	87.7

### Induction Motor Parameters

R1	X1	Xm	R2	X2	X'd	T'do	X/R	Base Impedance
0.0113	0.1314	1.2740	0.0116	0.1360	0.2540	0.3220	11.1	33.153 ohms

### Starting Data

Locked Rotor Current (amps)	347
Locked Rotor Power Factor %	20
Max. Locked Rotor Time (sec.)	74.3

### Torque

Locked Rotor %	50
Pull-up %	50
Breakdown %	160
Full Load (lb-ft)	11420

### Acceleration Time

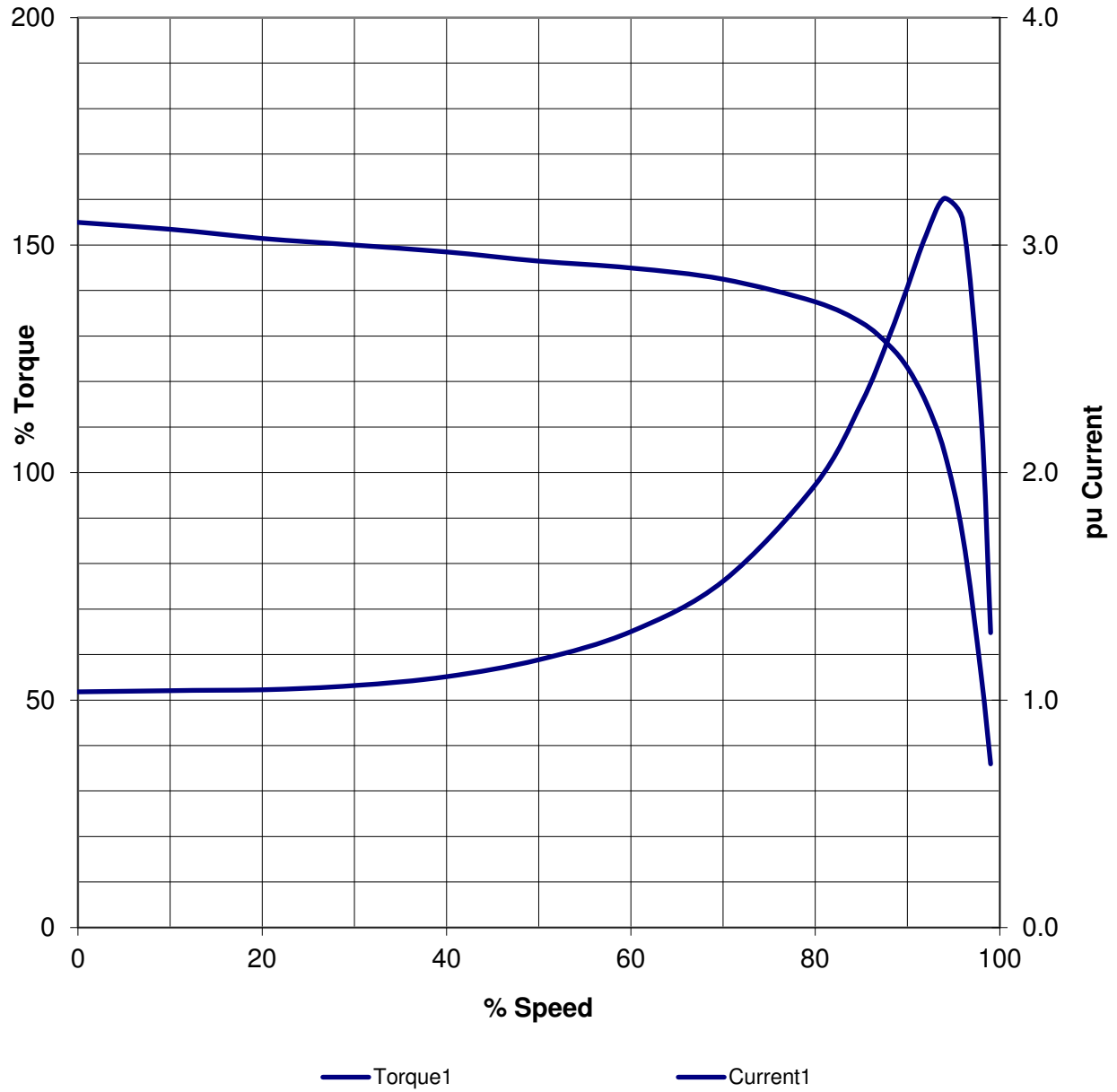
At Rated Voltage	4.6
------------------	-----

### Number of Starts

Two successive starts, with the motor initially at ambient temperature or

One start with the motor initially at rated temperature. Allow 20 minutes between additional starts.

### Speed - Torque - Current Curves



HP 700  
SRPM 327  
FL amps 112  
Voltage 4160

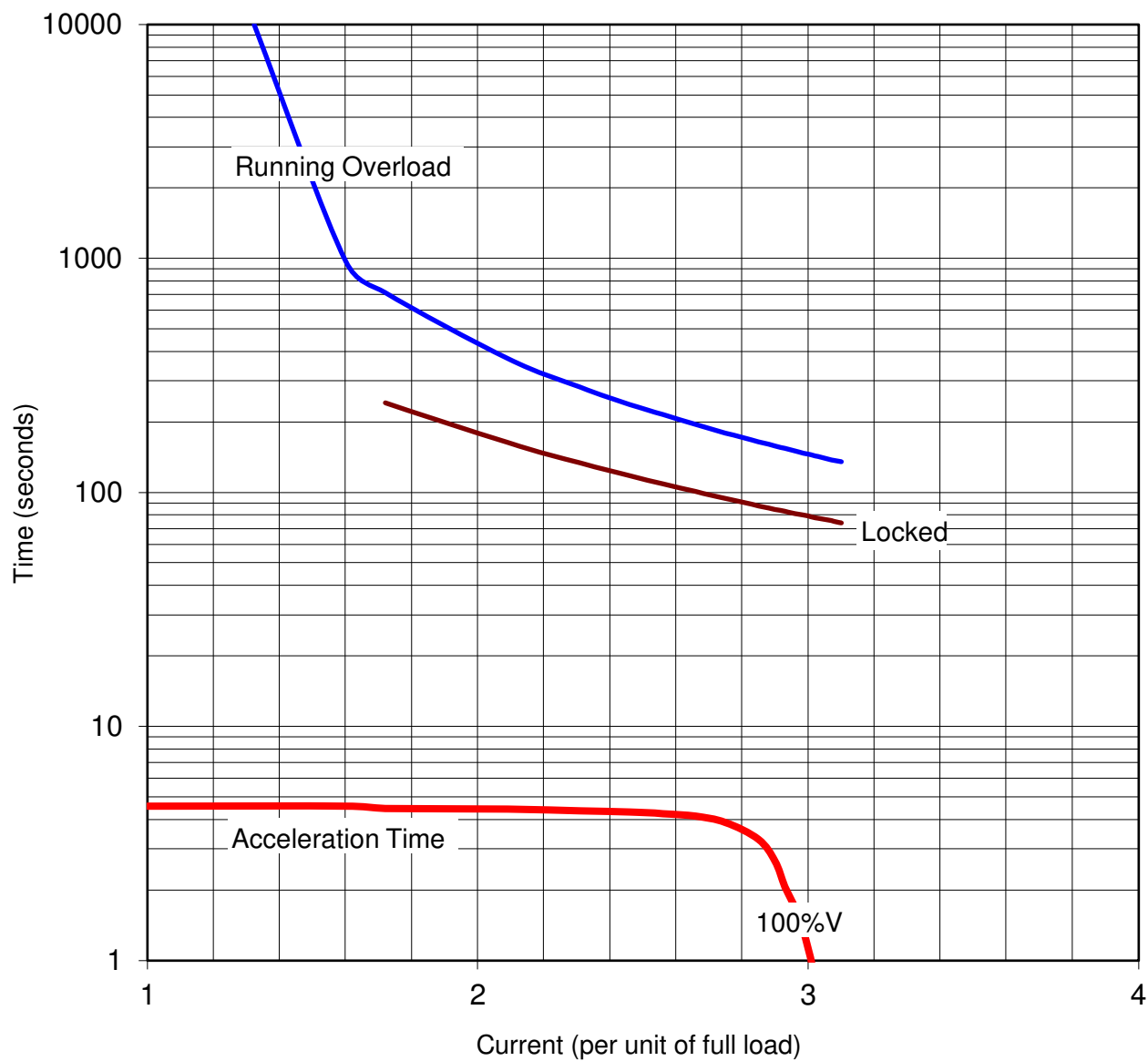
Torque1, Current1 at 100 % Voltage

Rev. 0

EE- 10479A



### Time Current and Thermal Limit Curves Hot Thermal Limit

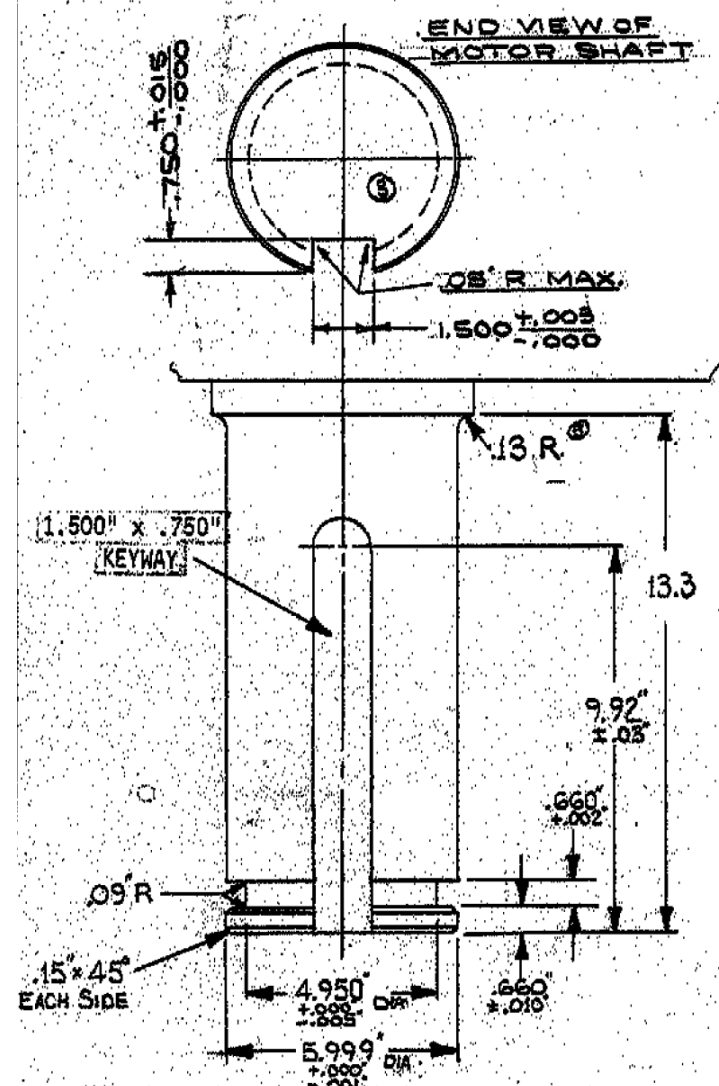
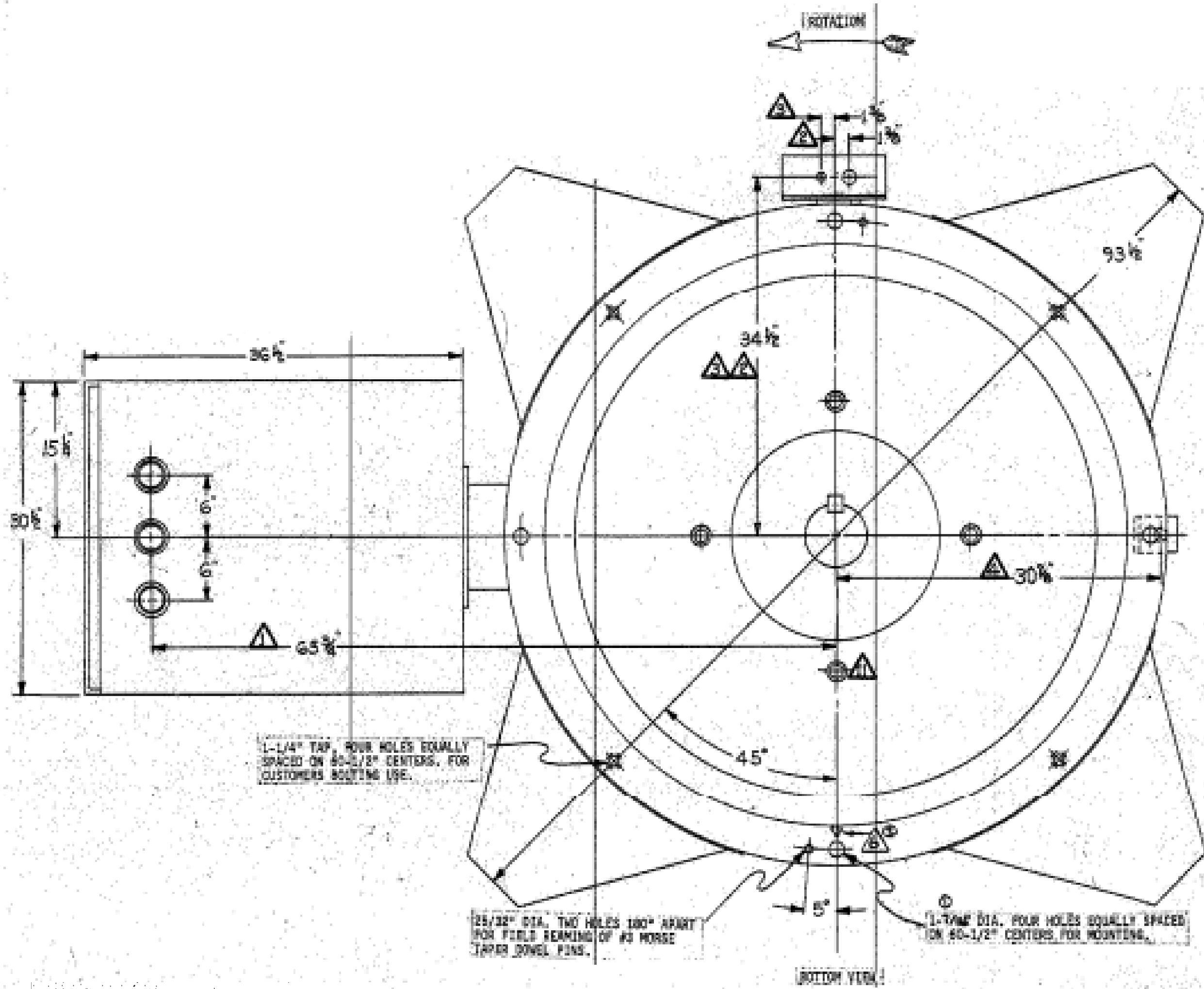
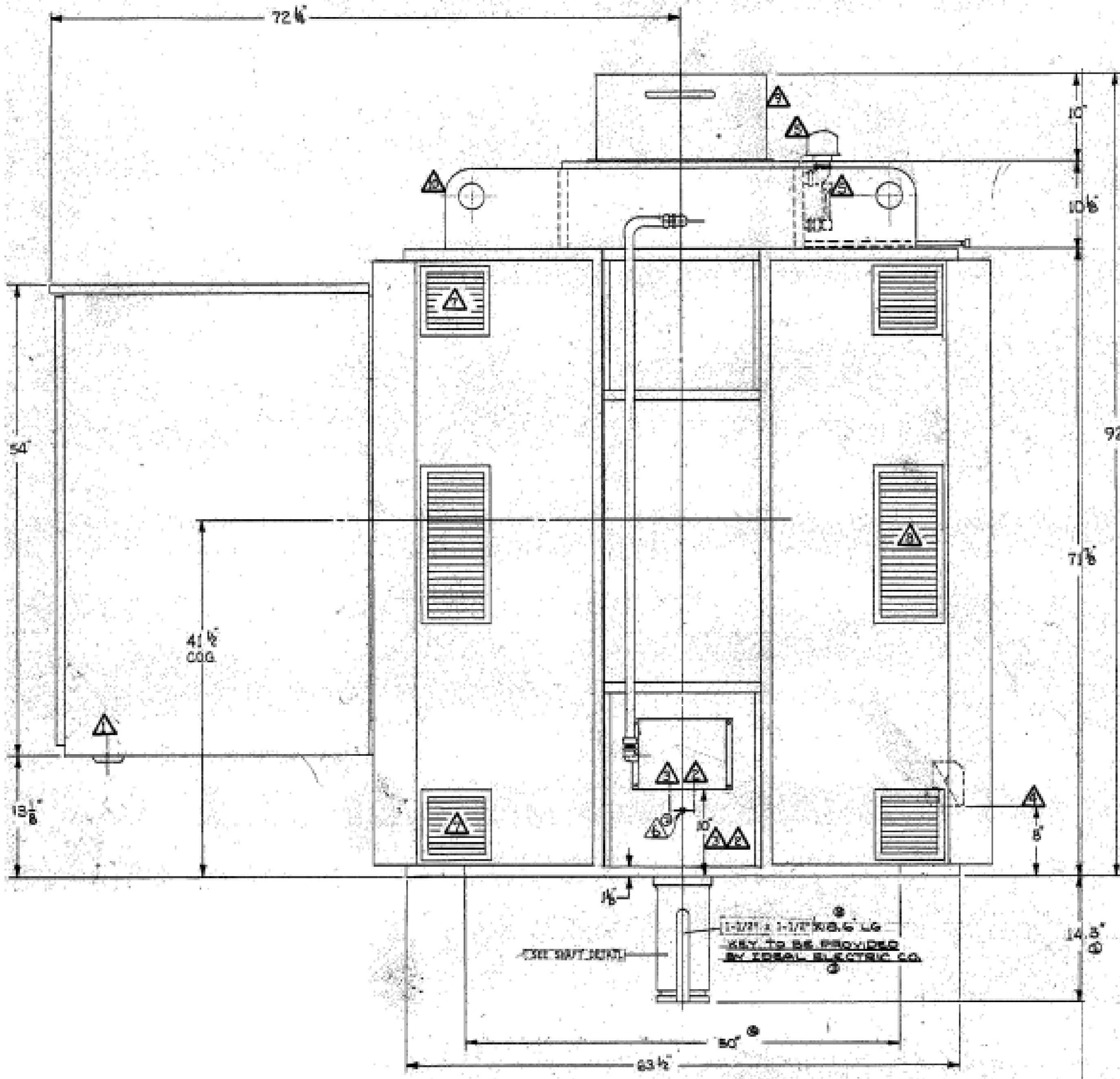


HP 700  
 SRPM 327  
 FL amps 112  
 Voltage 4160

Rev. 0

EE- 10479B

REV	ECN	ZONE	DESCRIPTION	CHANGED BY	APPROVED BY	DATE



APPROXIMATE WEIGHTS	
LOWER BRACKET-----	2000#
STATOR PACK-----	9400#
UPPER BRACKET-----	2800#
ROTOR WITH SHAFT-----	6800#
NEMA II COVERS-----	1000#
TOTAL WEIGHT-----	24500#

PRELIMINARY

WORKING TOLERANCES UNLESS OTHERWISE SPECIFIED			FIRST USED ON		IDEAL ELECTRIC COMPANY MANUFACTURERS OF CUSTOM MOTORS, GENERATORS & CONTROLS SINCE 1903	
MACHINING	FABRICATION	FINISH	IEC ORDER No.	BY DATE		
± .01 THRU 2.00 ± .015 OVER 2.00 ± .02 THRU 10.00 ± .03 OVER 10.00 ANGLE ± 0.5°	± .12 THRU 24.00 ± .24 OVER 24.00	125 MICRO ✓ INCHES	DR. 12-02-2020	CH.	OUTLINE DRAWING 700 HP, 327 RPM (22P), 4160 V, 60 Hz, WP11, V1	
ALL DIMENSIONS IN INCHES UNLESS OTHERWISE SPECIFIED			APP.	CH.		
ALL THREADS TO BE CLASS 2 UNIFIED			APP.	CH.	Q20-0401R0	
THIS DRAWING IS THE PROPERTY OF IDEAL ELECTRIC COMPANY. IT IS LOANED SUBJECT TO RETURN UPON DEMAND AND ALL INFORMATION HEREIN IS CONFIDENTIAL AND MUST NOT BE MADE PUBLIC AND IS NOT TO BE USED DIRECTLY OR INDIRECTLY IN ANY WAY DETRIMENTAL TO OUR INTERESTS.			SCALE NTS	WEIGHT	SHEET 1 of 1	