



Bid Number 50-00117853

**PURCHASE OF A COMBINATION SEWER CLEANER TRUCK FOR THE
JEFFERSON PARISH DEPARTMENT OF DRAINAGE**

BID DUE: OCTOBER 20, 2016 AT 2:00 PM

ATTENTION VENDORS!!!

Please review all pages and respond accordingly, complying with all provisions in the technical specifications and Jefferson Parish Instructions for Bidders and General Terms and Conditions. All bids must be received in the Purchasing Department by the bid due date and time.

**Jefferson Parish Purchasing Department
200 Derbigny Street
General Government Building, Suite 4400
Gretna, LA 70053**

**Buyer Name: Misty A. Camardelle
Buyer Email: mcamardelle@jeffparish.net
Buyer Phone: 504-364-2683**

PURCHASE OF A COMBINATION SEWER CLEANER TRUCK FOR THE JEFFERSON PARISH DEPARTMENT OF DRAINAGE

GENERAL

The machine shall be capable of removing stones, grit, grease, sludge and other debris from sanitary sewer and/or storm drain lines by the flushing action of high-pressure water. The high-pressure sewer cleaner operates independent of the vacuum system. This unit shall have a total minimum of 550 Horse Power.

The machine shall include an air conveying vacuum system to provide for the simultaneous removal of the debris flushed to the manhole by the high-pressure water system or for the removal of debris from sewers, sumps, catch basins, digesters, wet wells, bar screens, etc.

The machine shall be capable of being operated by one man, with all operating controls for high-pressure water pump, hose reel, and vacuum, located at the front of the machine for safety.

LOUISIANA DEALER'S LICENSE

In accordance with LA RS 32:1254 et seq and LA RS 38:2212.8, a Louisiana State Dealer's License is required. All bidders must provide a copy of their valid Louisiana Dealer's License with their bid submission. Failure to submit this copy will result in bid rejection.

DEBRIS BODY

- COMPLY

Debris storage body shall have a minimum usable liquid capacity of 9 cubic yards. The debris body shall be round for maximum strength and constructed of 3/16 inch ASTM A242 Corten A steel for enhanced corrosion resistance.

The rear door shall be dished and flanged for maximum strength, full opening, hinged at the top with low profile and adjustable style hinges.

There shall be a 6" diameter liquid drain valve, "knife valve type" and screen weldment inside for removing excess liquids. Drain shall have 10 feet of 6 inch lay flat hose.

The rear door shall be supplied with a debris deflector shield located inside the debris tank that encompasses 75 percent of the rear door. The debris deflector shield shall deflect material from rear door, and aid in draining off excess liquids.

A rear door safety prop shall be provided. For ease of maintenance there shall be no hydraulic components located inside the debris body or rear door.

Hydraulic operated, heavy duty wedge style door locks shall be installed. The door locks shall be operated by two double acting hydraulic cylinders. The rear door shall also hydraulically open and close (raise and lower) by means of two double acting hydraulic cylinders. The unlocking-opening and the closing-locking operations shall be controlled by a single switch and sequence valve.

Dual steel weldments with stainless steel screen 8" x 28" each providing up to 1200 square inches of added filtration for the vacuum system shall be provided inside the debris tank. These weldments shall be removable and require no cutting or welding.

A double acting power up/power down hydraulic scissors lift mechanism will be provided to raise body to a minimum 60 degree angle. The scissors lift mechanism shall be designed to support a minimum of 24 inches of the debris tank width to provide stability and when dumping on uneven ground. The lift capacity of hydraulic scissors lift cylinder is 56,000 lbs.

Dump controls shall be located on curbside mid-ship of the unit, well forward of the dumping area for operator safety. A manual override system is to be provided in case of system failure.

The debris body has a five year warranty. A copy of manufacturer's warranty statement shall be enclosed with bid. If pro-rated so state: N/A

An internal polyethylene float device with external indicator shall be supplied to show when body is loaded to capacity.

AUTOMATIC VACUUM BREAKER - COMPLY

The automatic vacuum breaker assembly is located inside the body.

The automatic vacuum breaker assembly shall be controlled by an electric over hydraulic circuit. The entire system shall be replaceable via a bolt on assembly. The assembly shall consist of a 12" inlet and two 8" ports that provide air flow to the vacuum system.

A full indication activates an automatic vacuum breaker shut down system that completely shuts down 100 percent of the airflow to the vacuum system to prevent overfilling and wastewater discharge into the atmosphere.

The vacuum breaker system is automatically activated (closed) when the parking brake system is released to eliminate carryover during transit.

The system is controlled/activated, at the front hose reel control station. This enables the operator to pick up large debris with boom and place debris on the road surface. This system can be used for safety in the event suction must be shut off in case of an emergency.

POSITIVE DISPLACEMENT BLOWER**- COMPLY**

A lobe type positive displacement blower shall be provided capable of 6000 CFM's and 18" of Hg. with cyclone separator. Control of the blower regarding start, stop and the rate of vacuum suction is performed from the front of the truck. A vacuum suction breaker disconnect switch is provided to enable operator to pick up large debris with boom and place debris on road surface. The vacuum system shall operate independent of the high-pressure water system.

The blower is protected by (2) two 3" diameter vacuum relief valves. The system incorporates an air/water separator and a sound silencer to separate material before it enters blower and to ensure quiet operation.

A means of starting, stopping and varying the vacuum suction from operator station at the front of the machine is provided.

The blower is mounted on a frame independent of the water tank.

Unit must be capable of vacuuming under water without air induction. A manometer/vacuum test may be required to demonstrate the system performance.

The positive displacement blower shall have a 12-month non-prorated warranty.

VACUUM PICK UP HOSE**- COMPLY**

Shall be front loading, attached at the front of the machine in order to provide ease of positioning the machine over the manhole, as well as afford maximum safety for the operator.

The 8" will be mounted on a boom that will provide a minimum of 18' vertical lift utilizing dual hydraulic cylinder and 230 degree of boom rotation powered hydraulically for non-interrupted smooth movement. Boom to have a lift capacity of 500 lbs. at the front bumper.

The boom will be powered by an electric over hydraulic system: up/down by dual lift cylinders. The right/left movements shall be hydraulic via worm gear rotation.

The boom shall hydraulically telescope a minimum of 10 ft. forward from the operator's station. The height of the boom shall not change while the boom is being telescoped. A manual override system shall be provided for right/left, and up/down functions in case of system failure.

Control of the boom is by means of a joystick control at the operator's station, requiring no cables at operator's feet for boom operation. A wireless remote control shall be provided for

Boom, Vacuum Breaker, Chassis Throttle, and Debris Body functions. A manual override system shall be provided for right/left, and up/down functions in case of system failure.

A boom coverage chart shall be provided stating the square feet the boom covers.

8 inch diameter pipe extensions with clamps will be provided and carried on the truck as follows:

- 1 6-1/2' Catch Basin Nozzle
- 3 6' Aluminum Pipe Extension
- 1 5' Aluminum Pipe Extension
- 1 3' Aluminum Pipe Extension
- 2 spare quick clamps

WATER SUPPLY — COMPLY

The water tanks shall have a minimum usable capacity of 1000 U.S. gallons.

The water tanks shall be constructed of non-corrosive, non-metallic, durable, cross-linked polyethylene to eliminate rust, corrosion, and stress cracking.

The water tanks shall be mounted at and below the truck frame level to provide a low center of gravity for truck stability.

A 2-1/2 inch diameter x 25 feet long hydrant hose with hydrant wrench shall be supplied on the unit.

An anti-siphon fill device shall be installed on the unit.

Inspection ports shall be provided to fill or to add chemicals to the water system.

A sight gauge to indicate water level is located within sight of the operator station.

The water tanks are protected by a minimum of 11 gauge steel plating mounted below the water tanks for protection against road hazards when unit travels over the road, off the road or to landfills.

The water tanks shall carry a ten year replacement warranty.

AUXILIARY ENGINE (WATER PUMP DRIVE ENGINE) - COMPLY

John Deere 6-Cylinder 185 HP at 2400 rpm 415 CID Tier 3 Flex

HIGH-PRESSURE WATER PUMP - COMPLY

The high pressure water pump shall be rated to deliver smooth continuous pressure and flow through the entire flow range of the pump. The high pressure shall have smooth continuous flow for both the high pressure system and the hand gun system.

A continuous duty flow of 80 g.p.m. and 3000 p.s.i shall be provided.

High-pressure relief valves are provided for both the high-pressure system and hand gun system.

The water pump operates independently of the vacuum system and is powered by the auxiliary engine via clutchless, direct dual powerband drive system.

The high-pressure water pump drive system shall carry a five year replacement warranty. Warranty excludes the drive engine, i.e. auxiliary engine.

The water pump shall be capable of running dry.

Controls for starting and stopping the water pump and to vary the flow and pressure shall be at the front hose reel operator's station.

The high-pressure water pump is equipped with a cold weather drain valve. The valve allows the operator to completely drain the high-pressure pump.

HOSE REEL ASSEMBLY - COMPLY

The hose reel assembly is mounted on the front of the vehicle. The hose reel shall have a minimum of 30" inside diameter with a capacity of 800' x 1" hose. The hose reel is equipped with a cage - Lexan style. The hose reel is hydraulically powered in both directions by means of a double chain and sprocket drive. The controls for operating the motor have a flow control device to regulate the rotational speed of the reel in both directions. All hydraulic hoses are behind a steel housing to protect operator from hydraulic oil if a hose fails. The hydraulic motor, chain, and sprockets have a protective cover or are mounted on the radiator side of the hose reel for operator safety. The hose reel articulates 180 degrees to the drivers side allowing operator to work in any position through this arc. This allows greater flexibility in truck placement for manholes located in tough areas and provides greater safety to the operator. Reel extends beyond the width of unit for greater flexibility for positioning reel over offset manholes, catch basins, etc. A hydraulically controlled outrigger leg is supplied that comes in

contact with the ground at any one position. A warning light is located in the cab to warn the operator that the outrigger leg is not in its transported position prior to moving the unit. A manual bypass system for the hose reel assembly is provided to manually pull the reel assembly away from its transported position. This feature allows operator to check fluids without starting engines.

JET HOSE - COMPLY

600' x 1" jet rodder hose will be supplied rated for 3000 psi working pressure and 7500 psi burst pressure.

A heavy duty hose guide with 25' of nylon rope will be provided.

Nozzles shall be hardened steel with replaceable ceramic orifices as follows: 1) Chisel head penetrator & 1) standard sanitary.

MANHOLE CLEANING WATER SYSTEM (HAND GUN) - COMPLY

The high-pressure pump and independent water tank assembly supplied shall be used for manhole cleaning. A smooth continuous flow of 20 g.p.m. and pressure of 600 p.s.i. shall be provided for ease of operation. A hand gun pressure relief valve set at 600 p.s.i. shall be provided. One full functioning hand gun with on/off hand control, replaceable nozzle tip, 12 inch extension, adjustable spray and 50' x 1/2" hose with retractable reel will be provided.

The hand gun will attach to the system via a quick couple connection at the curbside of the unit. To avoid being coiled at the operator's station a hand gun holder will be provided at the front bumper.

HYDRAULIC SYSTEM AND LUBRICATION - COMPLY

The hydraulic system has a 55-gallon capacity.

The hydraulic system shall incorporate a main shut off valve in case of hydraulic failure.

The hydraulic system shall incorporate hydraulic pressure relief valves and pressure gauges for ease of trouble shooting and maintenance.

The unit is equipped on the passenger side, mid-section of the module, a permanent weatherproof white vinyl lubrication chart that points out lubrication points on the module and specifies what type of lubrication and hydraulic fluids are required. The chart also specifies the frequency of each lubrication point.

Remote plumbed grease fittings are provided for the vacuum compressor, boom rotation, and water pump drive areas.

ACCESSORIES - COMPLY

A minimum twelve (12) month manufacturer's guarantee on the unit shall be provided.

- 2 35" x 14" x 24" side mounted tool boxes shall be provided.
- 1 Debris body power flush out system
- 1 Rear mounted hydraulic pump off system, 400 gpm w/20' lay flat hose
- 1 Gravity drain system consisting of plumbing to the mid-passenger side of the unit. Includes a 3" knife valve with cam-lock connection, 30' of layflat hose with storage rack allowing return of liquids to the manhole without having to reposition vehicle.
- 1 Front Gate Valve for use with Gravity Drain Option
- 1 Wear plate, swing style
- 1 Air purge system
- 1 1/4 turn ball valve water drain
- 1 Variable flow valve
- 1 Vertical style, deck mounted pipe rack, holds 3 pipe
- 1 Folding pipe rack holds 3 pieces of pipe, tank mounted, curbside
- 1 Storage box behind cab, 16" x 42" x 96"
- 1 Storage box shall be provided with two roll out shelves
- 1 Back up alarm
- 1 Hydro excavation package: 50' retractable handgun hose reel with 50' of 1/2" of high pressure hose, HP/Quick disconnect, heavy duty HP unloader valve, main control ball valve, 72"x1/2" Sch. 80 Lance w/Quick Dcn., Sngl. Fwd. Spray Nozzle, Horiz. Hand.
- 1 Hose footage counter, curb side
- 1 Rear mounted tow hooks
- 1 Auxiliary engine remote oil drain

- 1 Remote boom grease zerk assembly, (accessible from ground level)
- 1 Remote debris tank grease zerk assembly (accessible from ground level)
- 1 Aluminum Dual Roller Level Wind Guide ilo standard
- 1 Nozzle rack
- 1 10' leader hose
- 1 Water pump remote oil drain
- 1 Built in Body Prop - Rear Boom Support Mounted
- 1 John Deere 6-Cylinder 185 HP at 2400 rpm 415 CID
- 1 12VDC auxiliary hydraulic pump
- 1 Traffic Camera with Color Monitor (Camera placement must be picked)
- 1 Rear traffic camera
- 1 Front hose reel camera - to view front of hose reel area
- 1 Long handle storage/ (2) PVC
- 1 Long handle storage placement - rear of mainframe
- 1 Cone storage rack
- 1 Cone storage rack

LIGHTING - COMPLY

The entire module electrical system is vapor sealed to eliminate moisture damage.

All wiring is color-coded, labeled and run in sealed terminal enclosures.

All module circuits are protected by circuit breakers.

Clearance lights and reflectors are furnished in accordance with D.O.T. requirements.

- 1 4 LED strobes - (2) front bumper, (2) rear bumper - Whelen 50A03ZCR - Amber
- 1 LED arrow board, rear debris tank door mounted - Whelen TA1251NF1 Traffic Arrow

- 1 LED Arrow stick - Whelen TAM85 Traffic Advisor
- 2 Limb guards for flood lights
- 1 LED Boom Mounted Flood Light - Whelen NP6BB Worklight
- 1 LED Rear Mounted Flood Lights - Whelen NP6BB Worklight

PAINT - COMPLY

Unit paint surface is shot blasted, primed and sanded prior to paint. Unit to be painted with DuPont Imron 5000 polyurethane paint.

Unit shall have reflective green side and boom stripes and rear door chevrons.

Chassis shall be painted manufacturers standard white.

TRAINING AND MANUALS - COMPLY

Operator training will be conducted by a factory-trained representative for a minimum of one day at the time of delivery. 3 copy(ies) of the operating and maintenance manual for the sewer cleaner module shall be provided upon unit delivery. An operational video will be provided with the unit.

MOUNTING AND DELIVERY - COMPLY

The unit described will be mounted on a truck chassis acceptable to the body manufacturer at the factory of the body manufacturer.

EXCEPTIONS AND DEVIATIONS: - COMPLY

Bidder shall fully explain every variance, exception, and or deviation to the bid specifications. Additional sheets/lines may be added if required.

Chassis Specifications

Unit		Rr Axle Load (lbs):	23000
Model:	T400Series	G.C.W (lbs): Road	43000
Type:	FULL TRUCK	Conditions:	
Description:	T470 20K/23K	Class A (Highway)	90
Application			
SEWER COMBINATION UNIT		Class B (Hwy/Mtn)	10
		Class C (Off-Hwy)	00
		Class D (Off-Road)	00
Body		Maximum Grade:	6
Type:	Vacuum tank	Wheelbase (in):	243
Length: (ft):	16.0	Overhang (in):	60
Height (ft):	13.5	Fr Axle to BOC (in):	73
Max Laden Weight (lbs):	4000	Cab to Axle (in):	170
Chassis		Cab to EOF (in):	230
Fr Axle Load (lbs):	20000		

Description**T400 Series Conventional Extended Cab Or Equal****T470 4x2 Medium Duty**

Chassis operation will include stationary application used in lower 48 states [US only]. Stationary operation is defined as running the engine under load while stationary at a substantial fraction of engine gross horsepower (60% or greater) for an extended period of time (longer than 5 - 10 minutes).

Dealer/Customer declines engine w/CARB Idle

Emissions Reduction Feature.

T470 4x2 Medium Duty**Other bulk goods**

Local pickup & delivery. Vehicles which haul freight, typically operating within a 100-mile radius, on public streets & highways, & other paved surfaces, including limited Class C roads.

Includes package & freight delivery, as well as fuel oil or petroleum distribution, etc. Road usage: minimum 3% Class B, do not code for Class D.

Vacuum tank**U.S. Domestic Registry, 50-State**

Engine & Equipment - COMPLY

PX-9 370 2013 370@2000 365@2100 1250@1400

Includes turbo exhaust brake, no code is used. Diagnostic Plug for data link, Oil Cooler, Aluminum Flywheel Housing.

N09200 N205 120...Standard Maximum Speed Limit [LSL] N09220 N207 0....Expiration Distance

N09240 P09 120...Hard Maximum Speed Limit

N09260 P14 64...Maximum Accelerator Pedal Vehicle Speed N09280 P16 0....Accelerator Lower Droop

N09300 P19 64...Maximum Cruise Speed N09320 C143 0....Cruise Control Lower Droop

N09360 N203 252..Reserve Speed Function Reset Distance N09380 N202 0....Maximum Cycle Distance

N09400 N206 10...Maximum Active Distance N09420 N201 0....Reserve Speed Limit Offset
N09440 P11 No...Engine Protection Shutdown N09460 P06 No...Gear Down Protection N09480
P26 1400.Max PTO Speed

N09500 P02 No...Cruise Control Auto Resume N09520 P04 No...Auto Engine Brake in Cruise
N09540 N209 0....Expiration Distance

N09560 P520 Yes..Enable Idle Shutdown Park Brake Set N09580 P32 5....Timer Setting

N09600 P233 Yes..Enable Impending Shutdown Warning N09620 P234 60...Timer For
Impending Shutdown Warning N09640 P516 35...Engine Load Threshold

N09680 P33 No...Idle Shutdown Manual Override

N09720 P230 Yes..Enable Hot Ambient Automatic Override N09740 P46 40...Low Ambient
Temperature Threshold N09760 P56 60...Intermediate Ambient Temperature Threshold
N09780 P47 80...High Ambient Temperature Threshold

Prospector Version 37.2

Replaces 37.1

Effective VSL Setting NA

Engine Idle Shutdown Timer Disabled

Enable EIST Ambient Temp Override

Enable EIST in PTO Mode

Use only with MX and Cummins engines

Eff EIST NA Expiration Miles

Use only with MX and Cummins engines

Air compressor: Cummins 18.7 CFM, Cummins, PACCAR

PX engines.

Engine mount Powercore air cleaner w/constant torque SS clamps, pop-up air restriction indicator. Pop-up indicator is standard.

Fan Hub: Horton 2-Speed for ISL9, ISL-G,

PX-8 or PX-9

Cooling module: 1000 square inches

T170/T270/T370/T470. Includes metal surge tank on T170/T270/T370.

RH under cab DPF/SCR w/ RH SOC vertical tailpipe.

For use w/ daycabs, extended daycabs, or modular sleepers. T660 requires split fender hood

Tailpipe: 5 in. single 24 in. 45 degree curved.

Fleetguard filter/Water separator FS1003 w/WIF

(water in fuel) sensor. For PACCAR PX-8/PX-9 or Cummins ISL engines.

Kenworth Fuel Cooler

Required for Cummins engines with a single fuel tank. Required for PACCAR MX-13 engine with a single fuel tank and stationary use: High RPM, low vehicle speed, sustained for longer than 1 hour. Optional for all other applications.

Alternator: PACCAR 160 amp, brush type

Batteries: 2 PACCAR GP31 threaded post (700) 1400

CCA dual purpose.

Starter: PACCAR 12 volt electrical system. W/centralized power distribution incorporating plug-in style relays. Circuit protection for serviceability, 12-volt light system w/circuit protection circuits number & color coded.

Battery disconnects switches 2, mounted on battery box.

Multi-function engine connector for body builder interface for Cummins.

Body Builder Control Harness coiled EOF for customer installed remote throttle and remote PTO controls. Harness includes Remote PTO control and Remote Throttle controls. T680/T880 models do not require 12-way engine connector sales codes. All other models require (1900082 or 1900084).

Transmission & Clutch – COMPLY

Transmission: Allison 3000RDS 6-speed w/PTO drive gear. 5th Gen controls. Includes heat exchanger & oil level sensor. Rugged Duty Series for vocational applications. Transynd transmission fluid is standard on all Allison 1000, 2000, 3000 & 4000 series transmissions. Requires a push button shift control code. Oil temperature gauge is standard on class 8 models.

Driveline: 3 medium-duty 2 center bearing.

*Med duty is 1760 series.

Torque converter included w/Allison

Transmission.

Pushbutton control center console mounted.

Class 8 with Allison Transmission.

Delete Allison FuelSense

J1939 Park Brake Auto Neutral

PTO adapter for front engine PTO.

Chassis will be fitted w/LH transmission PTO.

(PREVENTS ECU F/INTERFERING W/PTO ONLY)

Chassis will be fitted w/RH transmission PTO.

(PREVENTS ECU F/INTERFERING W/PTO ONLY)

Front Axle & Equipment - COMPLY

Dana Spicer D2000 Front Axle rated 20K standard track.

Front Brakes: 22K Bendix ES S-cam 16.5x6 in.

Front dustshield: for drum brakes: all front axles.

Front Brake Drum: 22,000 lbs. 16-1/2x6 in. Cast.

Front Hubs Iron hub pilot 22,000 lbs. 10 Bolt 16.5x6in. or 7in. or air disc brakes. 10 Bolt, 11-1/4 in. bolt circle. Consider Wheelguards (5850002) with aluminum wheels.

ConMet PreSet Plus Hub package; front axle.

Hubcap: front vented.

Front Auto Slack Adjuster.

Front Springs: Taperleaf 22K w/shock absorbers. C500 standard with a single stage spring and threaded pins. T800/T880/T440/T470/W900B standard with a multi-stage spring and rubber pins. For T800/T880/T440/T470/W9B, this is a three stage spring. The spring rate increases when loaded closer to the full capacity of the spring. Not available on W900L or W900S.

Dual power steering gears: 20K TRW TAS65.

Power Steering Cooler: Radiator mounted air to oil 2007+ engines only. 2899362 is optional w/ 2006 or 2007 engines.

Rear Axle & Equipment

Single Dana Spicer S23-170 single reduction axle, single rear axle rated at 23K.

Rear Axle Ratio - 5.57.

Single Rear Brakes 16-1/2x7 in. Bendix ES- extended service S-cam.

Single Rear Brake Drums: cast.

Single Rear Hubs: Aluminum hub pilot 23K; 11-1/4 in. bolt circle.

ConMet PreSet Plus Hub package; single rear axle.

Single Rear axle automatic slack adjusters.

Spring Brake: 3030 high output single.

Dustshields for drum brakes: all rear axles.

Bendix 4S/4M anti-lock brake system.

Rear suspension: single Reyco 79KB taper leaf 23K. Steel cross members & gussets, Kenworth long life spring w/helper. Unladen Height: 11.0 in. Laden Height: 9.3 in. Not available with shocks or swaybars.

Tires & Wheels - COMPLY

Front tires: Bridgestone M854 425/65R22.5 20PR. 44.8 in. diameter, all position. On/Off highway. Wide-base tire. Curb protector bar 20.7 in. SLR.

Rear tires: Bridgestone M799 11R22.5 16PR. 42 in. diameter, drive. 19.5 in. SLR. Code is priced per pair of tires.

Rear Tire Quantity: 4

Front wheel: Alcoa 82362 22.5x12.25 aluminum, with Lvl One [TM] finish, hub pilot mount. 11400lb. maximum rating. Super single. Standard track axles may be over 102 in. w/425 tires. Air disc brake compatible.

Rear wheel: Accuride 50487 22.5x8.25 steel. Steel Armor[TM] powder coat, hub pilot mount. 7400lb. maximum rating. 5- hand hole. Air disc brake compatible. Code is priced per pair of wheels.

Powder coat white steel wheel. Use in conjunction with front, dual front, rear, spare or lift axle wheel code(s). All wheels on chassis must have same finish color.

Rear Wheel/Rim Quantity: 4

Frame & Equipment — COMPLY

Frame Rails: 10-3/4 x 3-1/2 x 3/8 in. Steel 337 in. to 416 in. Truck frame weight is 3.48 lb.-in. per pair of rails. Section modulus is 17.80, RBM is 2,132,000 in-lbs per rail. Frame rail availability may be restricted based upon application, axle/suspension capacity, fifth wheel setting, or component/dimensional specifications. The results of the engineering review may result in a change to the requested frame rail. If a change is required Kenworth Application Engineering will advise the dealer of the appropriate material specification for a substitute rail.

Full Steel Insert: for 10-5/8 in. or 10-3/4 in. Steel 337 in. to 416 in. or 2nd insert for 11-5/8 in. steel frame. Adds 1,149,000 in-lb to main rail RBM. Truck insert weight is 2.05 lb.-in. per pair of rails. Full frame insert length is equal to wheelbase plus rear frame cutoff plus dimension forward of front axle by model: T660 and T800 =

21.26 in., C500B = bumper setting minus 0.79 in., W900B = 5.27 in., W900L = 1.50 in., W900S = 3.27 in., T440/T470 50 in. bumper setting =

21.26 in., T470 73 in. bumper setting = 72.3 in.

Delete bumper: Requires a bumper setting code.

73 in. Bumper setting. Requires a bumper code.

T470 W/ extended front frame rail. Must code for rail separately.

Mudflaps, Front: Extra wide for use w/ tires that are wide base singles.

Battery box cantilever aluminum BOC w/fiberglass cover.

Battery box location: LH Side.

T470, C5, T6, T8 non-polished DPF/SCR or CNG cover diamond plate w/ step. For use w/ 2010 or later exhaust systems. For T8, use extended length non-polished battery box on opposite rail to match the length of under cab components.

Rear mud flap arms: Betts B-25 standard-duty, straight. Includes B1732 mounting brackets as standard.

Rear mudflap shields: White plastic antisail w/Kenworth logo.

Square end-of-frame w/ cross member; non-towing.

Fuel Tanks & Equip**- COMPLY**

Fuel Tank: 75 US gallon 24.5in. aluminum under replace. Class 8 fuel tanks w/ o locking caps include an anti-siphon device on the filler neck.

DEF tank 6.9 clear BOC [CBOC], requires LH under cab fuel tank. This tank has 6.9 gallons of useable volume. The tank will be located inboard of the LH under cab fuel tank. There is no frame space required to locate this tank. Not for use on sleeper chassis. Standard capacity is calculated by fuel capacity of the vehicle and will accommodate two diesel fill-ups for every DEF fill-up. For 1:1 DEF fuel fill ratio, add 7889204.

Standard DEF to fuel fill ratio: 2:1 or greater.

Anti-siphon device swaged in place. For any number of fuel tanks.

DEF tank location is on the LH.

Location: 75 gal fuel tank LH under cab

Cab & Equipment**- COMPLY**

Cab: Extended Day Cab w/ Curved Glass. Includes aluminum & fiberglass fully hucked cab w/ all aluminum bulkhead doors & continuous stainless steel piano-style door hinge & pins. C500B: 129 in. BBC. 80 in. FA to BOC. T660B: 128 in. BBC. 80 in. FA to BOC. T800B: 127 in. BBC. 80 in. FA to BOC. W900B: 126 in. BBC. 96 in. FA to BOC.

W900L: 136in. BBC. 106 in. FA to BOC. Incandescent exterior lights include diagnosable bulb detection and warning. Trailer cable on tractors includes integrity detection. Standard features include multiplex wiring for interior lights, automated pre-trip inspection, short and open check diagnostics, and programmable daytime running lights. Warning alarm will sound when lights are left on.

Cab door bearing blocks, top & bottom.

Hood: T470 Sloped Hood for straight rail. Includes radiator mounted grille, split fenders, mud flaps, & separate bumper.

Cab heater: W/integral defrosters & A/C 45,000 btu cab heater. No sleeper heater/AC. Includes 5 mode rotary controls. T660 include filter media.

Steering wheel: 18 in. 4-spoke.

Adjustable telescoping tilt steering column.

PTO air control: On dash w/indicator light.

Information for customer-installed PTO Chelsea 277. 10-bolt. Available only with Allison 3000/4000 series transmissions.

Switch & Wiring for Customer-Installed PTO. Electric over hydraulic PTO. Includes switch guard. Wiring is routed to LH frame for connection to the customer installed PTO. No air controls are provided with this code.

Two spare switches: Wired to power.

KW Driver Information Center: Includes fuel economy, RPM display, trip information, truck information, diagnostics, gear display, alarm clock.

Instrument package: Includes speedometer, tachometer, fuel gauge, engine coolant temperature gauge, engine oil pressure, voltmeter. Class 8 also includes primary & secondary air reservoir gauges & an air application gauge. DEF level gauge and warning lamp are included with 2010+ engines. Engine hour meter and outside air temperature readouts are standard. Primary read out will be MPH. Add 8240620 to switch primary scale to KPH in Canada.

Large flat panel on dash For customer-installed controls. Reduces gauge count by 6.

Cab Interior: Summit. T440/T470 Only. Includes smooth upholstered side & back panels w/stitched accent lines, upholstered door pads, full vinyl headliner, black dash panels & black rubber floor mats.

Interior color: Slate Gray w/trim Dark Slate Gray

Driver seat: Kenworth Air cushion Plus HB vinyl. Standard features includes 7 in. fore and aft slide adjustment w/isolator, 6- 23 degree recline, air suspension with cover, dual armrests, and single chamber air lumbar support. Seat cushion is 20 inches wide w/ 2-position tilt and 2-position front cushion extension. Seat material has a horizontal stitch pattern and is 2-tone in color. Seat back is carpeted and includes a map pocket. Seat is manufactured by National. Includes inside visor and retractable 3-point matching seat belts. Grey seat belts.

Rider seat: Kenworth Toolbox Plus HB vinyl. Standard features include fixed base and backrest, tool box seat base w/door, and dual armrests. Seat cushion is 19.5 inches. Seat material has a horizontal stitch pattern and is 2-tone in color. Seat back is carpeted with a map pocket. Seat is

manufactured by National. Includes inside visor and retractable 3-point matching seat belts. Grey seat belts.

Seat color: Dark Slate Gray.

Kenworth Radio with AM/FM/WB

Under dash center console: Includes one cup holder & two 12V outlets. For use w/Autoshift, Ultrashift, & Allison Gen IV only.

Non-self cancelling turn signal: W/column-mounted headlight dimmer switch & intermittent wiper control.

Electric LH & RH door locks.

Cab access contoured grabhandles, LH/RH.

Grabhandle LH inside door frame above dash.

Grabhandle RH inside door frame above dash.

DAYLITE DOOR: LH/RH INCL RH PEEPER WINDOW

Single air horn under cab.

Look-Down, Pass. Door, Stainless 8.5x4.4

Mirror: Dual Prutsmann mirror 7 in. x 16 in. polished stainless steel, and non-heated.

Mirror brackets 8-1/2 ft load width.

Rear Cab Stationary Window 17 in. x 36 in.

Manual LH & electric-powered RH door window. Switch located on door.

One-piece windshield, w/ curved glass.

2 in. rubber wheelwell fender extension.

Link Cabmate suspension.

Lights & Instruments - COMPLY

Headlamps: Halogen Projector Low Beam, Halogen Complex Reflector High Beam

Marker Lights: with small round base, Five cab roof mounted.

Turn Signal Lights: Mounted on fender

Combination Stop, Tail, Turn & Backup Lights RH & LH.

Daytime Running Lamps.

Marker Lights: Interrupter Switch. Included in Turn Signal For All Models Except T3. The T3 Switch Is In The Dash.

Wiring Only: For customer-installed backup alarm.

Circuit Breakers: Replacing fuses. Does not apply to any 5-amp fuse box position. Breakers include stop/brake/turn, tail lamp, high & low beams, marker/clearance lamps, horn, fuel heat, gauges, air dryer, HVAC controls, panel lamps. Some circuits will remain fuses.

Air Equipment - COMPLY

Air Dryer: Bendix AD-IS heated.

Moisture ejection valve w/ pull cable drain.

Nylon air tubing in frame & cab, excluding hoses subject to excessive heat or flexing.

Air tanks: clear of transmission area Clear area - forward of transmission yoke C/L

Extended Warranty

Standard Warranty.

GHG Secondary Manufacturer: Does Not Apply

Paint - COMPLY

Paint color number.

N97020 A - L0006 WHITE N97200 FRAME

N0001

BLACK

Day Cab Standard Paint

1 - Color Paint - Day Cab Color will be White if no other color is specified.

Base coat/clear coat. ELITE WHITE

DATE: 10/05/2016

INVITATION TO BID
THIS IS NOT AN ORDER

BID NO.: 50-00117853

JEFFERSON PARISH
PURCHASING DEPARTMENT
P.O. BOX 9
GRETNA, LA. 70054-0009
504-364-2678

Page: 1

BUYER: MCamardelle@jeffparish.net

BIDS WILL BE RECEIVED IN THE PURCHASING DEPARTMENT, SUITE 4400, JEFFERSON PARISH GENERAL GOVERNMENT BUILDING, 200 DERBIGNY STREET, GRETNA, LA 70053 UNTIL 2:00 PM, 10/20/2016 AND PUBLICLY OPENED THEREAFTER.

LATE BIDS WILL NOT BE ACCEPTED

Unless submitting via online (see Page 3), each bid must be submitted in a sealed envelope bearing on the outside; the name of the Bidder, his address, and the name of the project for which the bid is submitted and the bid number.

NOTE: ONLY BIDS WRITTEN IN INK OR TYPEWRITTEN, AND PROPERLY SIGNED BY A MEMBER OF THE FIRM OR AUTHORIZED REPRESENTATIVE, WILL BE ACCEPTED. PENCIL AND/OR PHOTOSTATIC FIGURES OR SIGNATURES SHALL RESULT IN BID REJECTION.

INSTRUCTIONS FOR BIDDERS AND GENERAL CONDITIONS
THE FOLLOWING INSTRUCTIONS APPLY TO ALL BIDS

All bids submitted are subject to these instructions and general conditions and any special conditions and specifications contained herein, all of which are made part of this bid proposal reference. By submitting a bid, vendor agrees to comply with all provisions of Louisiana Law as well be in compliance with the Jefferson Parish Code of Ordinances, Louisiana Code of Ethics, applicable Jefferson Parish ethical standards and Jefferson Parish Resolution No. 113646 and/or Resolution No. 113647.

All vendors submitting bids should register as a Jefferson Parish vendor if not already yet registered. Registration forms may be downloaded from www.purchasing.jeffparish.net and by clicking on Vendor Information. While Jefferson Parish may have these on file, all bidders should furnish their current W-9 Form and respective Tax Identification Numbers with bid submission; records on file may be invalid or expired. The successful bidder must submit a W-9 Form and respective Tax Identification Number upon contract execution. Failure to do so may result in delay of payment.

All quotations shall be based on F.O.B. Agency warehouse or job site, anywhere within the Parish as designated by the Purchasing Department. This provision does not apply to public works projects

JEFFERSON PARISH requires all products to be new (current) and all work must be performed according to standard practices for the project. Unless otherwise specified, no aftermarket parts will be accepted. Unless otherwise specified, all workmanship and materials must have at least one (1) year guaranty, in writing, from the date of delivery and/or acceptance of the project. Any deviations or alterations from the specifications must be indicated and/or supporting documentation supplied with bid submission.

Bidders should submit all questions in writing and fax them to the Purchasing Department at (504) 364-2693 no later than FIVE (5) working days prior to bid opening. Bid numbers should be mentioned in all requests. Questions may also be emailed to the buyer for this bid at the email address listed above. If submitting online, vendors may send questions via the E-Procurement site no later than Five (5) working days prior to the bid opening.

If this bid requires a pre-bid conference (see Additional Requirements section), bidders are advised that such conference will be held to allow bidders the opportunity to identify any discrepancies in the bid specifications and seek further clarification regarding instructions. The Purchasing Department will issue a written response to bidders' questions in the form of an Addendum. Please note that all official communication will be expressed in the form of an addendum.

All formal Addenda require written acknowledgement on the bid form by the bidder. Failure to acknowledge an Addendum on the bid form shall cause the bid to be rejected. JEFFERSON PARISH reserves the right to award bid to next lowest responsive and responsible bidder in this event.

The purpose and intention of this invitation to bid is to afford all suppliers an equal opportunity to bid on all construction, maintenance, repair, operating supplies and/or equipment listed in this bid proposal. JEFFERSON PARISH WILL ACCEPT ONE BID ONLY FROM EACH VENDOR. Items bid must meet specifications.

Visit our website at [HTTP://PURCHASING.JEFFPARISH.NET](http://PURCHASING.JEFFPARISH.NET)

JEFFERSON PARISH will accept one price for each item unless otherwise indicated. Two or more prices for one item will result in bid rejection. Bidders are required to complete, sign and return the bid form and/or complete and return the associated line item pricing forms as indicated. Vendors must not alter the bid forms. Doing so will cause the bid to be rejected.

If the bid exceeds \$30,000.00 and the company is duly authorized to do business in the state of Louisiana, a corporate resolution must be submitted with the bid or the person signing the bid documents must be listed on the Louisiana Secretary of State's website as an officer of the corporation, unless bidder has otherwise complied with LSA-R.S. 38:2212 (B)(5). If the bid is in excess of \$30,000 and bidder is registered out of the state of Louisiana, a corporate resolution must be submitted with the bid, unless bidder has otherwise complied with LSA-R.S. 38:2212 (B)(5). Failure to comply will cause bid to be rejected; the Parish reserves the right to award bid to the next lowest responsive and responsible bidder in this event. Bids submitted by Owner or Sole Proprietorships must include certification that he or she owns the entity for which the bid is signed. This documentation must be submitted with the bid. Failure to do so will result in bid rejection.

NOTE: A sample corporate resolution can be downloaded from our website <http://purchasing.jeffparish.net> or you may provide your own document. A sample certification of sole proprietorship can also be downloaded from our website <http://purchasing.jeffparish.net> or you may provide your own document.

INSTRUCTIONS FOR BIDDERS AND GENERAL CONDITIONS

A. AWARD OF CONTRACT: JEFFERSON PARISH reserves the right to award contracts or place orders on a lump sum or individual item basis, or such combination, as shall in its judgment be in the best interest of JEFFERSON PARISH. Every contract or order shall be awarded to the LOWEST RESPONSIVE AND RESPONSIBLE BIDDER, taking into consideration the CONFORMITY WITH THE SPECIFICATIONS and the DELIVERY AND/OR COMPLETION DATE. SPLIT AWARDS MADE TO SEVERAL VENDORS WILL ONLY BE GRANTED TO THOSE DEEMED RESPONSIVE AND RESPONSIBLE.

All bid prices shall remain valid for 45 days. Jefferson Parish and the lowest responsive and responsible bidder(s) by mutual written consent may mutually agree to extend the deadline for award by one (1) or more extensions of thirty (30) calendar days.

Preference is hereby given to materials, supplies, and provisions produced, manufactured or grown in Louisiana, quality being equal to articles offered by competitors outside the state. "LSA-R.S.38:2251-2261"

B. USE OF BRAND NAMES AND STOCK NUMBERS: Where brand names and stock numbers are specified, it is for the purpose of establishing certain minimum standards of quality. Bids may be submitted for products of equal quality, provided brand names and stock numbers are specified. Complete product data may be required prior to award.

C. CANCELLATION OF CONTRACT: JEFFERSON PARISH reserves the right to cancel all or any part if not shipped promptly. No charges will be allowed for parking or cartage unless specified in quotation. The order must not be filled at a higher price than quoted. JEFFERSON PARISH reserves the right to cancel any contract at anytime and for any reason by issuing a THIRTY (30) day written notice to the contractor.

For good cause and as consideration for executing a contract with Jefferson Parish, vendor conveys, sells, assigns and transfers to Jefferson Parish or its assigns all rights, title and interest in and to all causes of action it may now or hereafter acquire under the antitrust laws of the United States and the State of Louisiana, relating to the particular good or services purchased or acquired by Jefferson Parish.

D. PRICES: Jefferson Parish is exempt from paying sales tax under LSA-R.S. 47:301 (8)(c). All prices for purchases by Jefferson Parish of supplies and materials shall be quoted in the unit of measure specified and unless otherwise specified, shall be exclusive of state and Parish taxes. The price quoted for work shall be stated in figures. In the event there is a difference in unit prices and totals, the unit price shall prevail.

Quantities listed are for bidding purposes only. Actual requirements may be more or less than quantities listed.

Bidders are not to exclude from participation in, deny the benefits of, or subject to discrimination under any program or activity, any person in the United States on the grounds of race, color, national origin, or sex; nor discriminate on the basis of age under the Age Discrimination Act of 1975, or with respect to an otherwise qualified handicapped individual as provided in Section 504 of the Rehabilitation Act of 1973, or on the basis of religion, except that any exemption from such prohibition against discrimination on the basis of religion as provided in the Civil Rights Act of 1964, or Title VI and VII of the Act of April 11, 1968, shall also apply. This assurance includes compliance with the administrative requirements of the Revenue Sharing final handicapped discrimination provisions contained in Section 51.55 (c), (d), (e), and (k)(5) of the Regulations. New construction or renovation projects must comply with Section 504 of the 1973 Rehabilitation Act, as amended, in accordance with the American National Standard Institute's specifications (ANSI A17.1-1961).

INSTRUCTIONS FOR BIDDERS AND GENERAL CONDITIONS

Advertised bids will be tabulated and a copy of the tabulation will be forwarded to each responding bidder.

IN ACCORDANCE WITH STATE REGULATIONS JEFFERSON PARISH OFFERS ELECTRONIC PROCUREMENT TO ALL VENDORS

This electronic procurement system allows vendors the convenience of reviewing and submitting bids online. This is a secure site and authorized personnel have limited read access only. Bidders are encouraged to submit electronically using this free service; while the website accepts various file types, one single PDF file containing all appropriate and required bid documents is preferred. Bidders submitting uploaded images of bid responses are solely responsible for clarity. If uploaded images/documents are not legible, then bidder's submission will be rejected. Please note all requirements contained in this bid package for electronic bid submission.

Please visit the Purchasing Department webpage at <http://purchasing.jeffparish.net> to register and review Jefferson Parish solicitations.

The general specifications for construction projects and the purchase of materials, services and/or supplies are those adopted by the JEFFERSON PARISH Council by Resolution No. 113646 or 113647 dated 12/09/09. The general conditions adopted by this resolution shall be considered as much a part of this document as if they were written wholly herein. A copy may be obtained from the Office of the Parish Clerk, Suite 6700, Jefferson Parish General Government Building, 200 Derbigny Street, Gretna, LA 70053. You may also obtain a copy by visiting the Purchasing Department webpage at <http://purchasing.jeffparish.net> and clicking on Online Forms.

ADDITIONAL REQUIREMENTS FOR THIS BID

PLEASE MATCH THE NUMBERS PRINTED IN THIS BOX WITH THE
CORRESPONDING INSTRUCTIONS BELOW.

13, 15

1. All bidders must attend the MANDATORY pre-bid conference and will be required to sign in and out as evidence of attendance. In accordance with LSA R.S. 38:2212(I), all prospective bidders shall be present at the beginning of the MANDATORY pre-bid conference and shall remain in attendance for the duration of the conference. Any prospective bidder who fails to attend the conference or remain for the duration shall be prohibited from submitting a bid for the project.
2. Attendance to this pre-bid conference is optional. However, failure to attend the pre-bid conference shall not relieve the bidder of responsibility for information discussed at the conference. Furthermore, failure to attend the pre-bid conference and inspection does not relieve the successful bidder from the necessity of furnishing materials or performing any work that may be required to complete the work in accordance with the specification with no additional cost to the owner.
3. Contractor must hold current applicable JEFFERSON PARISH licenses with the Department of Inspection and Code Enforcement. Contractor shall obtain any and all permits required by the JEFFERSON PARISH Department of Inspection and Code Enforcement. The contractor shall be responsible for the payment of these permits. All permits must be obtained prior to the start of the project. Contractor must also hold any and all applicable Federal and State licenses. Contractor shall be responsible for the payment of these permits and shall obtain them prior to the start of the project.
4. A LA State Contractor's License will be required in accordance with LSA R.S. 37-2150 et. seq. and such license number will be shown on the outside of the bid envelope. Failure to comply will cause the bid to be rejected. Additionally if submitting the bid electronically, then the license number must be entered in the appropriate field in the Electronic Procurement system. Failure to comply will cause the bid to be rejected.
5. It is the bidder's responsibility to visit the job site and evaluate the job before submitting a bid.
6. Job site must be clean and free of all litter and debris daily and upon completion of the contract. Passageways must be kept clean and free of material, equipment, and debris at all times. Flammable material must be removed from the job site daily because storage will not be permitted on the premises. Precautions must be exercised at all times to safeguard the welfare of JEFFERSON PARISH and the general public.

INSTRUCTIONS FOR BIDDERS AND GENERAL CONDITIONS

7. PUBLIC WORKS BIDS: All awards for public works in excess of \$5,000.00 will be reduced to a formal contract which shall be recorded at the contractor's expense with the Clerk of Court and Ex-Officio Recorder of Mortgages for the Parish of Jefferson. A price list of recordation costs may be obtained from the Clerk of Court and Ex-Officio Recorder of Mortgages for the Parish of Jefferson. All awards in excess of \$25,000.00 will require both a performance and a payment bond. Unless otherwise stated in the bid specifications, the performance bond requirements shall be 100% of the contract price. Unless otherwise stated in the bid specifications, the payment bond requirements shall be 100% of the contract price. Both bonds shall be supplied at the signing of the contract.
8. NON-PUBLIC WORKS BIDS: A performance bond will be required for this bid. The amount of the bond will be 100% of the contract price unless otherwise indicated in the specifications. The performance bond shall be supplied at the signing of the contract.
9. NON-PUBLIC WORKS BIDS: A payment bond will be required for this bid. The amount of the bond will be 100% of the contract price unless otherwise indicated in the specifications. The payment bond shall be supplied at the signing of the contract.
10. Unless otherwise stated in the bid specifications, the successful bidder will be required to procure standard insurance policies evidencing Parish-mandated insurance requirements as indicated on the attached "insurance requirements" sheet. All bidders must comply with the instructions in this sheet. Failure to comply will cause bid to be rejected.
11. A bid bond will be required with bid submission in the amount of 5% of the total bid, unless otherwise stated in the bid specifications. Acceptable forms shall be limited to cashier's check, certified check, or surety bid bond. All sureties must be in original format (no copies). If submitting a bid online, vendors must submit an electronic bid bond through the respective online clearinghouse bond management system(s) as indicated in the electronic bid solicitation on Central Auction House. No scanned paper copies of any bid bond will be accepted as part of the electronic bid submission.
12. This is a requirements contract to be provided on an as needed basis. JEFFERSON PARISH makes no representations on warranties with regard to minimum guaranteed quantities unless otherwise stated in the bid specifications.
13. Freight charges should be included in total cost when quoting. If not quoted FOB DELIVERED, freight must be quoted as a separate item. Bid may be rejected if not quoted FOB DELIVERED or if freight charges are not indicated on bid form.
14. PUBLIC WORKS BIDS - Completed, Signed and Properly Notarized Affidavits Required; This applies to all solicitations for construction, alteration or demolition of public buildings or projects, in conformity with the provisions contained in LSA-RS 38:2212.9, LSA-RS 38:2212.10, LSA-RS 38:2224, and Sec 2-923.1 of the Jefferson Parish Code of Ordinances. For bidding purposes, all bidders must submit with bid submission COMPLETED, SIGNED and PROPERLY NOTARIZED Affidavits, including: Non-Conviction Affidavit, Non-Collusion Affidavit, Campaign Contribution Affidavit, Debt Disclosures Affidavit and E-Verify Affidavit. For the convenience of vendors, all affidavits have been combined into one form entitled PUBLIC WORKS BID AFFIDAVIT. This affidavit must be submitted in its original format, and without material alteration, in order to be compliant and for the bid to be considered responsive. A scanned copy of the completed, signed and properly notarized affidavit may be submitted with the bid, however, the successful bidder must submit the original affidavit in its original format and without material alteration upon contract execution. Failure to comply will result in the bid submission being rejected as non-responsive. The Parish reserves the right to award bid to the next lowest responsive and responsible bidder in this event.
15. NON PUBLIC WORK BIDS - Completed, Signed and Properly Notarized Affidavits Required in conformity with the provisions contained in LSA – RS 38:2224 and Sec 2-923.1 of the Jefferson Parish Code of Ordinances. For bidding purposes, all bidders must submit with bid submission COMPLETED, SIGNED and PROPERLY NOTARIZED Affidavits, including: Non-Collusion Affidavit, Debt Disclosures Affidavit and Campaign Contribution Affidavit. For the convenience of vendors, all affidavits have been combined into one form entitled NON PUBLIC WORKS BID AFFIDAVIT. This affidavit must be submitted in its original format, and without material alteration, in order to be compliant and for the bid to be considered responsive. A scanned copy of the completed, signed and properly notarized affidavit may be submitted with the bid, however, the successful bidder must submit the original affidavit in its original format and without material alteration upon contract execution. Failure to comply will result in the bid submission being rejected as non-responsive. The Parish reserves the right to award bid to the next lowest responsive and responsible bidder in this event.
16. The ensuing contract for this bid solicitation may be eligible for FEMA reimbursement and/or Federal funding/reimbursement. As such, the referenced appendix will be applicable accordingly and shall be considered a part of the bid documents. All applicable certifications must be duly completed, signed and submitted with bid submission. Failure to submit applicable certifications with bid submission will result in bid rejection.
17. For this project, the Contractor shall not pay any state or local sales or use taxes on materials and equipment which are affixed and made part of the immovable property of the project or which permanently incorporated in the project (hereinafter referred to as "applicable materials and equipment"). All purchases of applicable materials or equipment shall be made by the contractor on behalf of and as the agent of Jefferson Parish (Owner), a political subdivision of the State of Louisiana. No state and local sales and use taxes are owned on applicable materials and equipment under the provisions of Act 1029 of the 1991 Regular Session – Louisiana Revised Statute 47:301(8)(c). Owner will furnish contractor a certificate form which certifies that Owner is not required to pay such state or local sales and use taxes, and contractor shall furnish a copy of such certificate to all vendors or suppliers of the applicable materials and equipment.

It shall be the duty of every parish officer, employee, department, agency, special district, board, and commission: and the duty of every contractor, subcontractor, and licensee of the parish, and the duty of every applicant for certification of eligibility for a parish contract or program, to cooperate with the Inspector General in any investigation, audit, inspection, performance review, or hearing pursuant to Jefferson Parish Code of Ordinances Section 2-155.10(19). By submitting a bid, vendor acknowledges this and will abide by all provisions of the referenced Jefferson Parish Code of Ordinances.

DATE: 10/05/2016

Page: 5

BID NO.: 50-00117853

BID FORM
Non Public Works

All Public Work Projects are required to use the Louisiana Uniform Public Work Bid Form

All prices must be held firm unless an escalation provision is requested in this bid. Jefferson Parish will allow one escalation during the term of the contract, which may not exceed the U.S. Bureau of Labor Statistics National Index for all Urban Consumers, unadjusted 12 month figure. The most recently published figure issued at the time an adjustment is requested will be used. A request must be made in writing by the vendor, and the escalation will only be applied to purchases made after the request is made.

Are you requesting an escalation provision?

YES _____ NO ☒

MAXIMUM ESCALATION PERCENTAGE REQUESTED n/a %

INITIAL BID PRICES WILL REMAIN FIRM THROUGH THE DATE OF 12/31/2016

For the purposes of comparison of bids when an escalation provision is requested, Jefferson Parish will apply the maximum escalation percentage quoted by the bidder to the period to which it is applied in the bid. The initial price and the escalation will be used to calculate the total bid price. It will be assumed, for comparison of prices only, that an equal amount of material or labor is purchased each month throughout the entire contract.

DELIVERY: FOB JEFFERSON PARISH

INDICATE DELIVERY DATE ON EQUIPMENT AND SUPPLIES

120 Days

LOUISIANA CONTRACTOR'S LICENSE NO.: (if applicable) _____

THIS SECTION MUST BE COMPLETED BY BIDDER:

FIRM NAME: Kenworth of South Louisiana LLC

ADDRESS: 3699 West Park Ave

CITY, STATE: Gray LA ZIP: 70359

TELEPHONE: (985) 876-3000 FAX: (985) 876-4452

EMAIL ADDRESS: scott@kwloouisiana.com

In the event that addenda are issued with this bid, bidders MUST acknowledge all addenda on the bid form. Bidder must acknowledge receipt of an addendum on the bid form as indicated. Failure to acknowledge any addendum on the bid form will result in bid rejection.

Acknowledge Receipt of Addenda: NUMBER: _____

NUMBER: _____

NUMBER: _____

NUMBER: _____

TOTAL PRICE OF ALL BID ITEMS: \$ 364,985⁰⁰

AUTHORIZED SIGNATURE: 

Scott Oliphant

TITLE: President

Printed Name

SIGNING INDICATES YOU HAVE READ AND COMPLY WITH THE INSTRUCTIONS AND CONDITIONS.

NOTE: All bids should be returned with the BID NUMBER and BID OPENING DATE indicated on the outside of the envelope submitted to the Purchasing Department.

INVITATION TO BID FROM JEFFERSON PARISH - continued

BID NO.: 50-00117853

SEALED BID

ITEM NUMBER	QUANTITY	U/M	DESCRIPTION OF ARTICLES	UNIT PRICE QUOTED	TOTALS
1	1.00	ONLY	PURCHASE OF A COMBINATION SEWER CLEANER TRUCK FOR THE JEFFERSON PARISH DEPARTMENT OF DRAINAGE 0010 Vac-Con Combination Unit Model: Kenworth Series T-400-Series Truck and Chassis T470 4x2 Medium Duty Specs Attached Combination Sewer Cleaner model PD4290H/1000 (827 at 18in.) Specifications Attached	\$364,985 ⁰⁰	\$364,985 ⁰⁰

CORPORATE RESOLUTION


EXCERPT FROM MINUTES OF MEETING OF THE BOARD OF DIRECTORS OF
Kenworth of South Louisiana LLC

INCORPORATED.

AT THE MEETING OF DIRECTORS OF Kenworth of South Louisiana LLC
INCORPORATED, DULY NOTICED AND HELD ON 10/14/2016,
A QUORUM BEING THERE PRESENT, ON MOTION DULY MADE AND SECONDED. IT
WAS:

RESOLVED THAT Scott Oliphant, BE AND IS HEREBY
APPOINTED, CONSTITUTED AND DESIGNATED AS AGENT AND ATTORNEY-IN-
FACT OF THE CORPORATION WITH FULL POWER AND AUTHORITY TO ACT ON
BEHALF OF THIS CORPORATION IN ALL NEGOTIATIONS, BIDDING, CONCERNS
AND TRANSACTIONS WITH THE PARISH OF JEFFERSON OR ANY OF ITS AGENCIES,
DEPARTMENTS, EMPLOYEES OR AGENTS, INCLUDING BUT NOT LIMITED TO, THE
EXECUTION OF ALL BIDS, PAPERS, DOCUMENTS, AFFIDAVITS, BONDS, SURETIES,
CONTRACTS AND ACTS AND TO RECEIVE ALL PURCHASE ORDERS AND NOTICES
ISSUED PURSUANT TO THE PROVISIONS OF ANY SUCH BID OR CONTRACT, THIS
CORPORATION HEREBY RATIFYING, APPROVING, CONFIRMING, AND ACCEPTING
EACH AND EVERY SUCH ACT PERFORMED BY SAID AGENT AND ATTORNEY-IN-
FACT.

I HEREBY CERTIFY THE FOREGOING TO BE
A TRUE AND CORRECT COPY OF AN
EXCERPT OF THE MINUTES OF THE ABOVE
DATED MEETING OF THE BOARD OF
DIRECTORS OF SAID CORPORATION, AND
THE SAME HAS NOT BEEN REVOKED OR
RESCINDED.


Jodie Teuton

SECRETARY-TREASURER

10/14/2016

DATE

Non-Public Works Bid Affidavit Instructions

- Affidavit is supplied as a courtesy to Affiants, but it is the responsibility of the affiant to insure the affidavit they submit to Jefferson Parish complies, in both form and content, with federal, state and parish laws.
- Affidavit must be signed by an authorized representative of the entity or the affidavit will not be accepted.
- Affidavit must be notarized or the affidavit will not be accepted.
- Notary must sign name, print name, and include bar/notary number, or the affidavit will not be accepted.
- Affiant **MUST** select either A or B when required or the affidavit will not be accepted.
- Affiants who select choice A must include an attachment or the affidavit will not be accepted.
- If both choice A and B are selected, the affidavit will not be accepted.
- Affidavit marked N/A will not be accepted.
- It is the responsibility of the Affiant to submit a new affidavit if any additional campaign contributions are made after the affidavit is executed but prior to the time the council acts on the matter.

Instruction sheet may be omitted when submitting the affidavit

Non-Public Works Bid

AFFIDAVIT

STATE OF Louisiana

PARISH/COUNTY OF Terrebonne

BEFORE ME, the undersigned authority, personally came and appeared: Scott Oliphant
_____, (Affiant) who after being by me duly sworn, deposed and said that
he/she is the fully authorized President Kenworth of South Louisiana LLC
of _____ (Entity),
the party who submitted a bid in response to Bid Number 50-00117853, to the Parish of
Jefferson.

Affiant further said:

Campaign Contribution Disclosures

(Choose A or B, if option A is indicated please include the required attachment):

Choice A ^x Attached hereto is a list of all campaign contributions, including the date and amount of each contribution, made to current or former elected officials of the Parish of Jefferson by Entity, Affiant, and/or officers, directors and owners, including employees, owning 25% or more of the Entity during the two-year period immediately preceding the date of this affidavit or the current term of the elected official, whichever is greater. Further, Entity, Affiant, and/or Entity Owners have not made any contributions to or in support of current or former members of the Jefferson Parish Council or the Jefferson Parish President through or in the name of another person or legal entity, either directly or indirectly.

Choice B _____ there are **NO** campaign contributions made which would require disclosure under Choice A of this section.

AMOUNT	\$1,000.00
OFFICE	JEFFERSON PARISH COUNCIL
NAME	PAUL JOHNSTON

Debt Disclosures

(Choose A or B, if option A is indicated please include the required attachment):

Choice A _____ Attached hereto is a list of all debts owed by the affiant to any elected or appointed official of the Parish of Jefferson, and any and all debts owed by any elected or appointed official of the Parish to the Affiant.

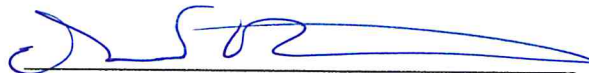
Choice B ^x_____ There are **NO** debts which would require disclosure under Choice A of this section.

Affiant further said:

That Affiant has employed no person, corporation, firm, association, or other organization, either directly or indirectly, to secure the public contract under which he received payment, other than persons regularly employed by the Affiant whose services in connection with the construction, alteration or demolition of the public building or project or in securing the public contract were in the regular course of their duties for Affiant; and

[The remainder of this page is intentionally left blank.]

That no part of the contract price received by Affiant was paid or will be paid to any person, corporation, firm, association, or other organization for soliciting the contract, other than the payment of their normal compensation to persons regularly employed by the Affiant whose services in connection with the construction, alteration or demolition of the public building or project were in the regular course of their duties for Affiant.



Signature of Affiant

Scott Oliphant

Printed Name of Affiant

SWORN AND SUBSCRIBED TO BEFORE ME

ON THE 14th DAY OF October, 2016.



Notary Public

Melissa Bonvillain

Printed Name of Notary

133041

Notary/Bar Roll Number

My commission expires lifetime.



[Print](#)

Notary Search - Detail

Name: MS. MELISSA BONVILLAIN
Address: 305 BLAKEFIELD DRIVE
SCHRIEVER, LA 70395
Phone: (985) 387-0883
Notary ID Number: 133041
Parish: TERREBONNE with STATEWIDE JURISDICTION
Agency: N/A
Notary Type: Non Attorney
Status: Active
Commission Date: 08/16/2013
Oath Date: 08/06/2013
Surety Expiration Date: 08/16/2018
Annual Report Current: Yes

[Back to Search Results](#)[New Search](#)



CERTIFICATE OF GARAGE INSURANCE

DATE (MM/DD/YYYY)

07/21/2016

THIS CERTIFICATE IS ISSUED AS A MATTER OF INFORMATION ONLY AND CONFERS NO RIGHTS UPON THE CERTIFICATE HOLDER. THIS CERTIFICATE DOES NOT AFFIRMATIVELY OR NEGATIVELY AMEND, EXTEND OR ALTER THE COVERAGE AFFORDED BY THE POLICIES BELOW. THIS CERTIFICATE OF INSURANCE DOES NOT CONSTITUTE A CONTRACT BETWEEN THE ISSUING INSURER(S), AUTHORIZED REPRESENTATIVE OR PRODUCER, AND THE CERTIFICATE HOLDER.

IMPORTANT: If the certificate holder is an ADDITIONAL INSURED, the policy(ies) must be endorsed. If SUBROGATION IS WAIVED, subject to the terms and conditions of the policy, certain policies may require an endorsement. A statement on this certificate does not confer rights to the certificate holder in lieu of such endorsement(s).

PRODUCER GMAC Risk Services 5000 Dearborn Circle Suite 200 Mt. Laurel NJ 08054		CONTACT NAME: Dealer Products PHONE (A/C, No, Ext): 856-437-2230 E-MAIL ADDRESS: Dealerproducts@ally.com FAX (A/C, No): 866-955-6665	
INSURED Kenworth of South Louisiana LLC DBA Kenworth of Louisiana 3699 WEST PARK AVE GRAY LA 70359		INSURER(S) AFFORDING COVERAGE INSURER A: Harco National Insurance Company INSURER B: INSURER C: INSURER D: INSURER E: INSURER F:	
		NAIC # 26433	

COVERAGES PROD / CUSTOMER ID:

CERTIFICATE #:

REVISION #:

THIS IS TO CERTIFY THAT THE POLICIES OF INSURANCE LISTED BELOW HAVE BEEN ISSUED TO THE INSURED NAMED ABOVE FOR THE POLICY PERIOD INDICATED. NOTWITHSTANDING ANY REQUIREMENT, TERM OR CONDITION OF ANY CONTRACT OR OTHER DOCUMENT WITH RESPECT TO WHICH THIS CERTIFICATE MAY BE ISSUED OR MAY PERTAIN, THE INSURANCE AFFORDED BY THE POLICIES DESCRIBED HEREIN IS SUBJECT TO ALL THE TERMS, EXCLUSIONS AND CONDITIONS OF SUCH POLICIES. LIMITS SHOWN MAY HAVE BEEN REDUCED BY PAID CLAIMS.

INSR LTR	TYPE OF INSURANCE	ADDL INSD	SUBR WVD	POLICY NUMBER	POLICY EFF (MM/DD/YYYY)	POLICY EXP (MM/DD/YYYY)	LIMITS
A	GARAGE LIABILITY <input type="checkbox"/> ALL OWNED AUTOS <input type="checkbox"/> HIRED AUTOS ONLY <input type="checkbox"/> NON-OWNED AUTOS USED IN GARAGE BUSINESS <input checked="" type="checkbox"/> Any Auto			CPP0006383-01	11/01/2015	11/01/2016	AUTO ONLY (Ea accident) \$ 500,000 OTHER THAN AUTO ONLY EA ACCIDENT \$ 500,000 AGGREGATE \$ N/A
A	GARAGE KEEPERS LIABILITY <input checked="" type="checkbox"/> LEGAL LIABILITY <input type="checkbox"/> DIRECT BASIS <input type="checkbox"/> PRIMARY <input type="checkbox"/> EXCESS			CPP0006383-01	11/01/2015	11/01/2016	<input checked="" type="checkbox"/> COMPT OTC SPECIFIED PERILS LOC \$ 500,000 <input checked="" type="checkbox"/> COLLISION LOC \$ 500,000 LOC \$
	GENERAL LIABILITY <input type="checkbox"/> COMMERCIAL GENERAL LIABILITY <input type="checkbox"/> CLAIMS-MADE <input type="checkbox"/> OCCUR GEN'L AGGREGATE LIMIT APPLIES PER: <input type="checkbox"/> POLICY <input type="checkbox"/> PRO-JECT <input type="checkbox"/> LOC			Included in Garage Liability			EACH OCCURRENCE \$ DAMAGE TO RENTED PREMISES (Ea occurrence) \$ MED EXP (Any one person) \$ PERSONAL & ADV INJURY \$ GENERAL AGGREGATE \$ PRODUCTS - COMP/OP AGG \$
A	<input checked="" type="checkbox"/> UMBRELLA LIAB <input type="checkbox"/> EXCESS LIAB DED <input type="checkbox"/> RETENTIONS \$			BU-0006383-01	11/01/2015	11/01/2016	EACH OCCURRENCE \$ 10,000,000 AGGREGATE \$ N/A
	WORKERS COMPENSATION AND EMPLOYERS' LIABILITY ANY PROPRIETOR/PARTNER/EXECUTIVE OFFICER/MEMBER EXCLUDED? (Mandatory in NH) If yes, describe under REMARKS below Y/N <input type="checkbox"/>	N/A					WC STATUTORY LIMITS <input type="checkbox"/> OTH-ER <input type="checkbox"/> E.L. EACH ACCIDENT \$ E.L. DISEASE - EA EMPLOYEE \$ E.L. DISEASE - POLICY LIMIT \$

REMARKS (Attach ACORD 101, Additional Remarks Schedule, if more space is required)

BID NO. 50-00116741. General Liability is included in Garage Liability.

CERTIFICATE HOLDER

CANCELLATION

The Parish of Jefferson, its Districts, Departments, and Agencies under the direction of the Parish President and the Parish Council
Jefferson Parish Department of Fleet Management
4901 Jefferson Hwy., Suite A
Jefferson, LA 70121

SHOULD ANY OF THE ABOVE DESCRIBED POLICIES BE CANCELLED BEFORE THE EXPIRATION DATE THEREOF, NOTICE WILL BE DELIVERED IN ACCORDANCE WITH THE POLICY PROVISIONS.

AUTHORIZED REPRESENTATIVE

Michael Schmidt

© 2010 ACORD CORPORATION. All rights reserved.



ADDITIONAL REMARKS SCHEDULE

Page 2 of 2

AGENCY GMAC Risk Services		NAMED INSURED	
POLICY NUMBER CPP0006383-01		SOUTHLAND TRUCK GROUP LLC 1001 EDWARDS AVE	
CARRIER Harco National Insurance Company	NAIC CODE 26433	HARAHAN, LA 70123	
		EFFECTIVE DATE: 11/01/2015	

ADDITIONAL REMARKS

THIS ADDITIONAL REMARKS FORM IS A SCHEDULE TO ACORD FORM,
 FORM NUMBER: 30 FORM TITLE: Certificate of Garage Liability

NAMED INSURED LISTED ON POLICY:

Southland Truck Group
 Southland Truck Group, LLC
 Kenworth of South Louisiana LLC DBA Kenworth of South Louisiana
 Kenworth of South Louisiana LLC DBA Kenworth of Louisiana
 Southland International of Louisiana, LLC
 Southland International of Louisiana, LLC dba Southland Trailer Sales
 Southland Idealease, LLC (dormant)
 Southland Truck Leasing LLC dba Southland PacLease
 Southland International Real Estate Holdings, LLC
 Kenworth of South Louisiana, LLC
 Southland Truck Parts, LLC dba Kenworth of South Louisiana
 Southland Performance Parts and Machine, LLC (dormant)
 Teuton-Roddy Properties, LLC
 Southland Trailer, Inc.
 Teuton-Caro Development, LLC
 Southland Packard Properties, LLC (dormant)
 Southland Leasing of Louisiana, LLC
 Kenworth of South Louisiana LLC DBA Kenworth of Louisiana

LOCATION SCHEDULE:

1001 EDWARDS AVE, HARAHAN, LA 70123
 3699 WEST PARK AVE, GRAY, LA 70359
 3701 WEST PARK AVE, GRAY, LA 70359
 3729 WEST PARK AVE, GRAY, LA 70359
 813 VETERANS DR., CARENCRO, LA 70520
 1302 BRIDGEVIEW DR, PORT ALLEN, LA 70767
 1758 HWY 3185, THIBODAUX, LA 78301
 441 S. GOODMAN RD, LAKE CHARLES, LA 70615
 3876 INDUSTRIAL CIRCLE, BOSSIER CITY, LA 71112
 3876 Industrial Circle, Bossier City, LA 71112

License No. N - 2015-00223
DPS Code: NGKA

2015-2017

Not Transferable
Valid Only at Address Below

Louisiana Motor Vehicle Commission

This Certifies that

Kenworth of South Louisiana, L.L.C.
DBA Kenworth of South Louisiana
3699 West Park Avenue
Gray, LA 70359

Joe Teuton, Jr., Scott E. Oliphant, Jodie L. Teuton, Joe Teuton, III, Dealer-Operators

is duly licensed as a

New Motor Vehicle Dealer

of the following make or makes

Kenworth

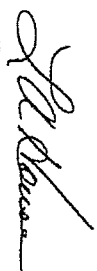
For the period ending October 31, 2017, unless license is sooner revoked.


In Witness whereof, LOUISIANA MOTOR VEHICLE COMMISSION, under and by virtue of the authority vested in it by the laws of the State of Louisiana, has caused this license to be issued with its seal imprinted hereon.

Dated November 1, 2015
Signed, Sealed and Attested

LOUISIANA MOTOR VEHICLE COMMISSION




Executive Director


Chairman

(To be prominently displayed in place of business)



SPECIFICATIONS - COMBINATION SEWER CLEANER

PD4290H/1000 (827 at 18")

COMPLY, Indicate: Yes or No

GENERAL

☒ Yes ☐ No

The machine is capable of removing stones, grit, grease, sludge and other debris from sanitary sewer and/or storm drain lines by the flushing action of high-pressure water. The high-pressure sewer cleaner operates independent of the vacuum system. This unit shall have a total minimum of 550 Horse Power.

The machine includes an air conveying vacuum system to provide for the simultaneous removal of the debris flushed to the manhole by the high-pressure water system or for the removal of debris from sewers, sumps, catch basins, digesters, wet wells, bar screens, etc.

The machine is capable of being operated by one man, with all operating controls for high-pressure water pump, hose reel, and vacuum, located at the front of the machine for safety.

DEBRIS BODY

☒ Yes ☐ No

Debris storage body has a minimum usable liquid capacity of 9 cubic yards. The debris body shall be round for maximum strength and constructed of 3/16 inch ASTM A242 Corten A steel for enhanced corrosion resistance.

The rear door shall be dished and flanged for maximum strength, full opening, hinged at the top with low profile and adjustable style hinges.

There shall be a 6" diameter liquid drain valve, "knife valve type" and screen weldment inside for removing excess liquids. Drain will have 10 feet of 6 inch lay flat hose.

The rear door shall be supplied with a debris deflector shield located inside the debris tank that encompasses 75 percent of the rear door. The debris deflector shield shall deflect material from rear door, and aid in draining off excess liquids.

A rear door safety prop shall be provided. For ease of maintenance there shall be no hydraulic components located inside the debris body or rear door.

Hydraulic operated, heavy duty wedge style door locks shall be installed. The door locks shall be operated by two double acting hydraulic cylinders. The rear door shall also hydraulically open and close (raise and lower) by means of two double acting hydraulic cylinders. The unlocking-opening and the closing-locking operations shall be controlled by a single switch and sequence valve.

Dual steel weldments with stainless steel screen 8" x 28" each providing up to 1200 square inches of added filtration for the vacuum system shall be provided inside the debris tank. These weldments shall be removable and require no cutting or welding.

A double acting power up/power down hydraulic scissors lift mechanism will be provided to raise body to a minimum 60 degree angle. The scissors lift mechanism shall be designed to support a minimum of 24 inches of the debris tank width to provide stability and when dumping on uneven ground. The lift capacity of hydraulic scissors lift cylinder is 56,000 lbs.

Dump controls are located on curbside mid-ship of the unit, well forward of the dumping area for operator safety. A manual override system is provided in case of system failure.

The debris body has a five year warranty. A copy of manufacturer's warranty statement shall be enclosed with bid. If pro-rated so state: _____

An internal polyethylene float device with external indicator is supplied to show when body is loaded to capacity.

AUTOMATIC VACUUM BREAKER

☒ Yes ☐ No

The automatic vacuum breaker assembly is located inside the body.

The automatic vacuum breaker assembly shall be controlled by an electric over hydraulic circuit. The entire

system shall be replaceable via a bolt on assembly. The assembly shall consist of a 12" inlet and two 8" ports that provide air flow to the vacuum system.

A full indication activates an automatic vacuum breaker shut down system that completely shuts down 100 percent of the airflow to the vacuum system to prevent overfilling and wastewater discharge into the atmosphere.

The vacuum breaker system is automatically activated (closed) when the parking brake system is released to eliminate carryover during transit.

The system is controlled/activated, at the front hose reel control station. This enables the operator to pick up large debris with boom and place debris on the road surface. This system can be used for safety in the event suction must be shut off in case of an emergency.

POSITIVE DISPLACEMENT BLOWER

☒ Yes ☐ No

A lobe type positive displacement blower shall be provided capable of 6000 CFM's and 18" of Hg. with cyclone separator. Control of the blower regarding start, stop and the rate of vacuum suction is performed from the front of the truck. A vacuum suction breaker disconnect switch is provided to enable operator to pick up large debris with boom and place debris on road surface. The vacuum system shall operate independent of the high-pressure water system.

something else

The blower is protected by (2) two 3" diameter vacuum relief valves. The system incorporates an air/water separator and a sound silencer to separate material before it enters blower and to ensure quiet operation.

A means of starting, stopping and varying the vacuum suction from operator station at the front of the machine is provided.

The blower is mounted on a frame independent of the water tank.

Unit must be capable of vacuuming under water without air induction. A manometer/vacuum test may be required to demonstrate the system performance.

The positive displacement blower have a 12-month non-prorated warranty.

VACUUM PICK UP HOSE

☒ Yes ☐ No

Shall be front loading, attached at the front of the machine in order to provide ease of positioning the machine over the manhole, as well as afford maximum safety for the operator.

The 8" will be mounted on a boom that will provide a minimum of 18' vertical lift utilizing dual hydraulic cylinder and 230 degree of boom rotation powered hydraulically for non-interrupted smooth movement. Boom to have a lift capacity of 500 lbs. at the front bumper.

The boom will be powered by an electric over hydraulic system: up/down by dual lift cylinders. The right/left movements shall be hydraulic via worm gear rotation.

The boom shall hydraulically telescope a minimum of 10 ft. forward from the operators station. The height of the boom shall not change while the boom is being telescoped. A manual override system shall be provided for right/left, and up/down functions in case of system failure.

Control of the boom is by means of a joystick control at the operator's station, requiring no cables at operator's feet for boom operation. A wireless remote control will be provided for Boom, Vacuum Breaker, Chassis Throttle, and Debris Body functions. A manual override system shall be provided for right/left, and up/down functions in case of system failure.

A boom coverage chart shall be provided stating the square feet the boom covers.

8 inch diameter pipe extensions with clamps will be provided and carried on the truck as follows:

- 1 6-1/2' Catch Basin Nozzle
- 3 6' Aluminum Pipe Extension
- 1 5' Aluminum Pipe Extension
- 1 3' Aluminum Pipe Extension
- 2 spare quick clamps

WATER SUPPLY

☒ Yes ☐ No

The water tanks shall have a minimum usable capacity of 1000 U.S. gallons.

The water tanks shall be constructed of non-corrosive, non-metallic, durable, cross-linked polyethylene to eliminate rust, corrosion, and stress cracking.

The water tanks shall be mounted at and below the truck frame level to provide a low center of gravity for truck stability.

A 2-1/2 inch diameter x 25 feet long hydrant hose with hydrant wrench is supplied on the unit.

An anti-siphon fill device is installed on the unit.

Inspection ports shall be provided to fill or to add chemicals to the water system.

A sight gauge to indicate water level is located within sight of the operator station.

The water tanks are protected by a minimum of 11 gauge steel plating mounted below the water tanks for protection against road hazards when unit travels over the road, off the road or to land fills.

The water tanks carry a ten year replacement warranty.

AUXILIARY ENGINE (WATER PUMP DRIVE ENGINE)

☒ Yes ☐ No

John Deere 6-Cylinder 185 HP at 2400 rpm 415 CID Tier 3 Flex

HIGH-PRESSURE WATER PUMP

☒ Yes ☐ No

The high pressure water pump shall be rated to deliver smooth continuous pressure and flow through the entire flow range of the pump. The high pressure shall have smooth continuous flow for both the high pressure system and the hand gun system.

A continuous duty flow of 80 g.p.m. and 3000 p.s.i shall be provided.

High-pressure relief valves are provided for both the high-pressure system and hand gun system.

The water pump operates independently of the vacuum system and is powered by the auxiliary engine via clutchless, direct dual powerband drive system.

The high-pressure water pump drive system carries a five year replacement warranty. Warranty excludes the drive engine, i.e. auxiliary engine.

The water pump is capable of running dry.

Controls for starting and stopping the water pump and to vary the flow and pressure shall be at the front hose reel operator's station.

The high-pressure water pump is equipped with a cold weather drain valve. The valve allows the operator to completely drain the high-pressure pump.

HOSE REEL ASSEMBLY

☒ Yes ☐ No

The hose reel assembly is mounted on the front of the vehicle. The hose reel shall have a minimum of 30" inside diameter with a capacity of 800' x 1" hose. The hose reel is equipped with a cage - Lexan style. The hose reel is hydraulically powered in both directions by means of a double chain and sprocket drive. The controls for operating the motor have a flow control device to regulate the rotational speed of the reel in both directions. All hydraulic hoses are behind a steel housing to protect operator from hydraulic oil if a hose fails. The hydraulic motor, chain, and sprockets have a protective cover or are mounted on the radiator side of the hose reel for operator safety. The hose reel articulates 180 degrees to the drivers side allowing operator to work in any position through this arc. This allows greater flexibility in truck placement for manholes located in tough areas and provides greater safety to the operator. Reel extends beyond the width of unit for greater flexibility for positioning reel over offset manholes, catch basins, etc. A hydraulically controlled outrigger leg is supplied that comes in contact with the ground at any one position. A warning light is located in the cab to warn the operator that the outrigger leg is not in its transported position prior to moving the unit. A manual bypass system for the hose reel assembly is provided to manually pull the reel assembly away from its transported position. This feature allows operator to check fluids without starting engines.

JET HOSE

☒ Yes ☐ No

600' x 1" jet rodder hose will be supplied rated for 3000 psi working pressure and 7500 psi burst pressure.

A heavy duty hose guide with 25' of nylon rope will be provided.

Nozzles shall be hardened steel with replaceable ceramic orifices as follows: 1) Chisel head penetrator & 1) standard sanitary.

MANHOLE CLEANING WATER SYSTEM (HAND GUN)

☒ Yes ☐ No

The high-pressure pump and independent water tank assembly supplied shall be used for manhole cleaning. A smooth continuous flow of 20 g.p.m. and pressure of 600 p.s.i. shall be provided for ease of operation. A hand gun pressure relief valve set at 600 p.s.i. shall be provided. One full functioning hand gun with on/off hand control, replaceable nozzle tip, 12 inch extension, adjustable spray and 50' x 1/2" hose with retractable reel will be provided.

The hand gun will attach to the system via a quick couple connection at the curbside of the unit. To avoid being coiled at the operator's station a hand gun holder will be provided at the front bumper.

HYDRAULIC SYSTEM AND LUBRICATION

☒ Yes ☐ No

The hydraulic system has a 55-gallon capacity.

The hydraulic system shall incorporate a main shut off valve in case of hydraulic failure.

The hydraulic system shall incorporate hydraulic pressure relief valves and pressure gauges for ease of trouble shooting and maintenance.

The unit is equipped on the passenger side, mid-section of the module, a permanent weatherproof white vinyl lubrication chart that points out lubrication points on the module and specifies what type of lubrication and hydraulic fluids are required. The chart also specifies the frequency of each lubrication point.

Remote plumbed grease fittings are provided for the vacuum compressor, boom rotation, and water pump drive areas.

ACCESSORIES

☒ Yes ☐ No

A minimum twelve (12) month manufacturer's guarantee on the unit will be provided.

2) 35" x 14" x 24" side mounted tool boxes will be provided.

- 1 Debris body power flush out system
- 1 Rear mounted hydraulic pump off system, 400 gpm w/20' lay flat hose
Gravity drain system consisting of plumbing to the mid-passenger side of the unit. Includes a 3" knife valve
- 1 with cam-lock connection, 30' of layflat hose with storage rack allowing return of liquids to the manhole without having to reposition vehicle.
- 1 Front Gate Valve for use with Gravity Drain Option
- 1 Wear plate, swing style
- 1 Air purge system
- 1 1/4 turn ball valve water drain
- 1 Variable flow valve
- 1 Vertical style, deck mounted pipe rack, holds 3 pipe
- 1 Folding pipe rack holds 3 pieces of pipe, tank mounted, curbside
- 1 Storage box behind cab, 16" x 42" x 96"
- 1 Storage box shall be provided with two roll out shelves
- 1 Back up alarm
- Hydroexcavation package: 50' retractable handgun hose reel with 50' of 1/2" of high pressure hose, HP/Quick disconnect, heavy duty HP unloader valve, main control ball valve, 72" x 1/2" Sch. 80 Lance w/Quick Dcn., Sngl. Fwd. Spray Nozzle, Horiz. Hand.

- 1 Hose footage counter, curb side
- 1 Rear mounted tow hooks
- 1 Auxiliary engine remote oil drain
- 1 Remote boom grease zerk assembly, (accessible from ground level)
- 1 Remote debris tank grease zerk assembly (accessible from ground level)
- 1 Aluminum Dual Roller Level Wind Guide ilo standard
- 1 Nozzle rack
- 1 10' leader hose
- 1 Water pump remote oil drain
- 1 Built in Body Prop - Rear Boom Support Mounted
- 1 John Deere 6-Cylinder 185 HP at 2400 rpm 415 CID
- 1 12VDC auxiliary hydraulic pump
- 1 Traffic Camera with Color Monitor (Camera placement must be picked)
- 1 Rear traffic camera
- 1 Front hose reel camera - to view front of hose reel area
- 1 Long handle storage/ (2) PVC
- 1 Long handle storage placement - rear of mainframe
- 1 Cone storage rack
- 1 Cone storage rack

LIGHTING

☒ Yes ☐ No

The entire module electrical system is vapor sealed to eliminate moisture damage.

All wiring is color-coded, labeled and run in sealed terminal enclosures.

All module circuits are protected by circuit breakers.

Clearance lights and reflectors are furnished in accordance with D.O.T. requirements.

- 1 4 LED strobes - (2) front bumper, (2) rear bumper - Whelen 50A03ZCR - Amber
- 1 LED arrow board, rear debris tank door mounted - Whelen TA1251NF1 Traffic Arrow
- 1 LED Arrow stick - Whelen TAM85 Traffic Advisor
- 2 Limb guards for flood lights
- 1 LED Boom Mounted Flood Light - Whelen NP6BB Worklight
- 1 LED Rear Mounted Flood Lights - Whelen NP6BB Worklight

PAINT

☒ Yes ☐ No

Unit paint surface is shot blasted, primed and sanded prior to paint. Unit to be painted.

with DuPont Imron 5000 polyurethane paint.

Unit shall have reflective green side and boom stripes and rear door chevrons.

Chassis shall be painted manufacturers standard white.

TRAINING AND MANUALS

☒ Yes ☐ No

Operator training will be conducted by a factory-trained representative for a minimum of one day at the time of delivery. 3 copy(ies) of the operating and maintenance manual for the sewer cleaner module shall be provided upon unit delivery. An operational video will be provided with the unit.

MOUNTING AND DELIVERY

☒ Yes ☐ No

The unit described will be mounted on a truck chassis acceptable to the body manufacturer at the factory of the body manufacturer.

© 2006 The Authors
Journal compilation © 2006 Blackwell Publishing Ltd

This image shows a single sheet of white paper with horizontal blue or grey ruling lines. The lines are evenly spaced and run across the width of the page. There is no handwriting or other markings on the paper.



W a r r a n t y - Dual Engine PD

VAC-CON, as seller, warrants all equipment manufactured by it and bearing its name shall be free from defects in material and workmanship, under normal use and service as determined by us, for a period of (12) twelve months from the date of delivery to the first retail purchaser.

Should any equipment or part of such equipment sold hereunder prove to be defective in material or workmanship within said period, and be returned to Seller's factory no later than 15 days after the expiration date of the warranty, transportation charges prepaid by the Buyer, and upon examination be found to be defective, such part will be replaced at the factory by the Seller free of charge, but the Seller shall be under no further liability in respect to such warranty. It is expressly understood that the Seller's liability is limited to furnishing of such replacement parts within a reasonable length of time and that the Seller will not be liable for any damages, losses or expenses arising in connection with the use of or inability to use the unit(s), including but not limited to, injuries to persons or damage to property, loss of profits or anticipated profits, or loss of vehicle use. Buyer shall be responsible for the payment of duties or taxes on warranty parts, if applicable. The Seller shall be under no liability because of normal wear and tear of operation or maintenance contrary to the manufacturer's official Operator's Manual. The Buyer accepts any liability for damage or injury resulting from the removal or alteration of safety guards and safety precautions provided on the unit at the time of delivery. This warranty shall not apply and VAC-CON shall have no liability under it or otherwise if the unit shall have been injured by accident, careless handling or improper applications or if any repairs have been made to the unit by other than VAC-CON, its agents or employees.

Warranties covering major components not of VAC-CON manufacture (power plants, hydraulics, trucks, vacuum compressors, transmissions, electrical components, batteries, tires, etc.) are warranted by their respective manufacturers.

We give no warranty express or implied, as to description, quality, productiveness or any other matter and the Buyer hereby waives the right of refusal and return of the goods which is usually connected with non-warranty.

It is the sole responsibility of the purchaser to use this equipment in an appropriate application and a safe manner. VAC-CON assumes no responsibility or liability for its misuse.

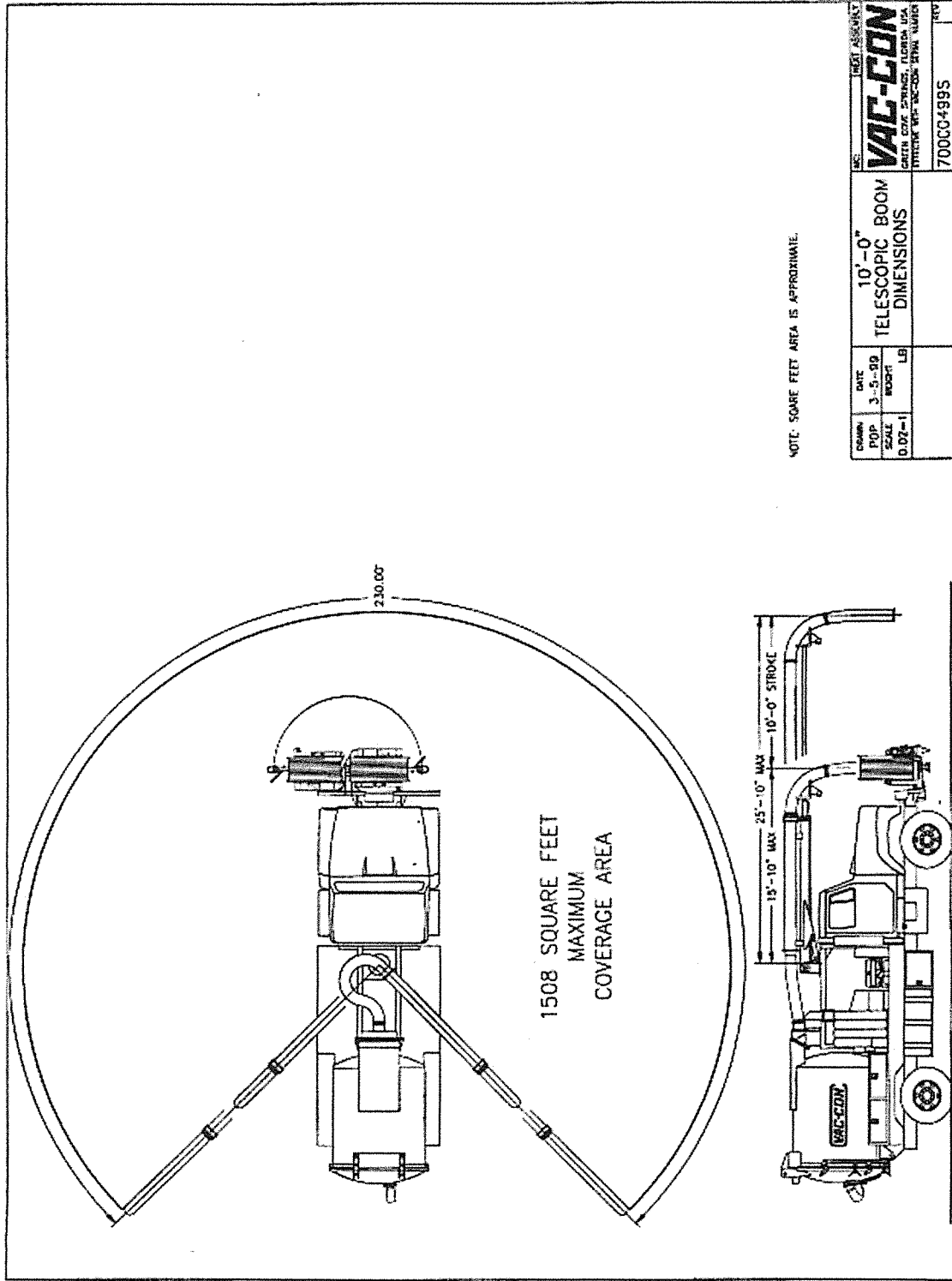
FIVE (5) YEAR WARRANTY:

VAC-CON warrants that the auxiliary engine water pump drive components (excluding engine and pump) and debris tank shall be free from defects in material and workmanship, under normal use and service as determined by the manufacturer, for a period of sixty (60) months (not pro-rated) from the date the unit is first placed into service.

TEN (10) YEAR WARRANTY:

VAC-CON warrants that the fresh water tanks shall be free from defects in material and workmanship, under normal use and service as determined by the manufacturer, for a period of one hundred twenty (120) months (not pro-rated) from the date the unit is first placed into service.

This warranty is not transferable.



NOTE: SQUARE FEET AREA IS APPROXIMATE.

DATE	3-5-99	10'-0" TELESCOPIC BOOM DIMENSIONS	700C0499S
SCALE	1"=10'		
PROJECT	BOOM		
REV	1		
VAC-CON <small>GREEN COVE SPRINGS, FLORIDA USA PHONE 904-866-0000 FAX 904-866-0001</small>			



VAC-CON

MORE **POWER** TO YOU

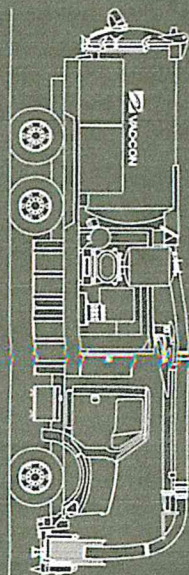
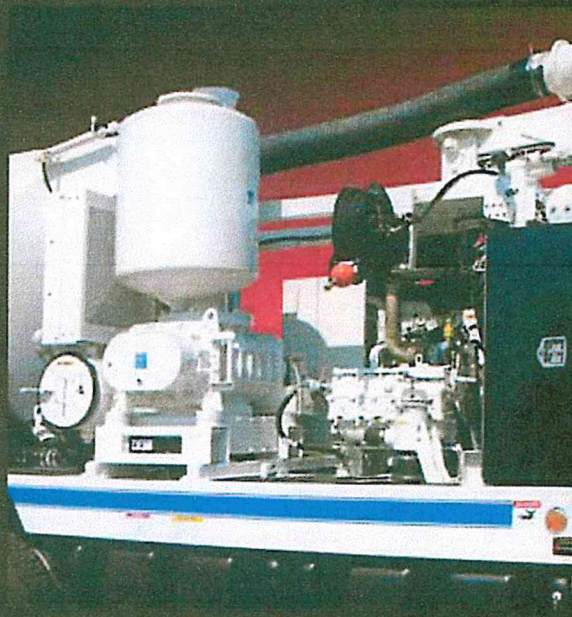
DUAL ENGINE
PD COMBINATION MACHINE



VAC-CON'S TWO-ENGINE PD MACHINE PUTS THE POWER WHERE YOU NEED IT!

Only Vac-Con combines the flexibility of two-engine design with the versatility of a positive displacement blower. Consistent with its other designs, Vac-Con uses the chassis engine to drive the vacuum system.

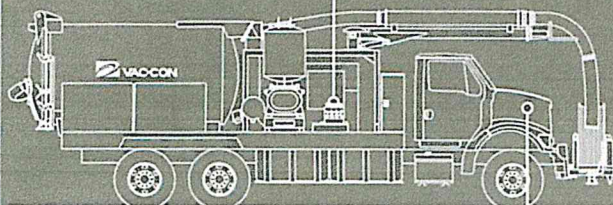
Using standard hydrostatic drive, this design can power PD blowers up to 27" Hg with ease. With water systems up to 3000 psi and 120 gpm, available filtration, excavating, Inspector Cam and Hi-Dump options, *this is truly a "go anywhere, do anything" machine.*



DUAL ENGINE PD COMBINATION MACHINE SPECIFICATIONS

THE VAC-CON 2-ENGINE PD BLOWER UNIT WITH TYPICAL MUNICIPAL CHASSIS & AUXILIARY ENGINE

High pressure water pump powered by the Auxiliary Engine (138 horsepower)



PD Blower powered by the Chassis Engine (275 horsepower)

TOTAL AVAILABLE HORSEPOWER: 413

VACUUM DRIVE SYSTEM

- Hydrostatic variable displacement piston pump driven by chassis engine
- Hydrostatic fixed displacement piston motor
- Hydraulically driven heat exchanger fan
- 110-190° F operation ranges at 90° F ambient temperature
- Torsional soft coupling
- Multi-stage hydraulic filtration system

VACUUM SYSTEM

- Positive displacement blower
- Standard vacuum rating: 16" Hg at 3600 CFM
- Dual relief valves
- Low point drain in plenum
- Standard vacuum gauge conveniently mounted
- Optional PD Blowers:
 - Vacuum rating: 15" Hg at 2950 CFM
 - Vacuum rating: 16" Hg at 4200 CFM
 - Vacuum rating: 27" Hg at 1250 CFM

COMPONENT REQUIRED HORSEPOWER

Blower: 16" Hg at 3600 CFM	185
Water Pump: 80 GPM at 2000 PSI	110
Hydraulic Pump (full operating)	20
Miscellaneous Chassis Accessories:	
Alternator/Cooling Fan/Pump/Air Compressor	23
Total Horsepower	338

*Add 25 HP for 16" Hg at 4200 CFM

AUTOMATIC VACUUM BREAKER SHUT-OFF AND FILTRATION

- Vacuum Breaker
 - System automatically stops air flow to prevent over filling and carry-over during transport
 - Can be manually controlled from front operator station or with available wireless remote for operator safety
- Filtration
 - Dual port separation with dual stainless steel microscreens
 - Centrifugal final filter with easy access inspection door
 - Cyclone separator available as required
- Available baghouse with cartridge filters
- Bag option for final filter

AUXILIARY ENGINE WATER PUMP DRIVE SYSTEM

- Diesel engine: 4 cylinder
 - 6 cylinder optional
- Fully independent operation of vacuum and water systems
- Allows continuous water circulation in motion or resting
- Front operator station controls
- 5 yr warranty on drive system (excludes engine and pump)

WATER SYSTEM

- Systems up to 3000 psi and 120 gpm with smooth continuous flow and pressure
- Available Hydro-Excavation Package
- Available winter recirculation
- Available air purge system



A HOLDEN INDUSTRIES Company

Vac-Con's PD Combination Machine is easy to operate, safe, durable and outperforms the competition. All backed by **Power Up** customer support, and our dedicated dealer network brings more power to you.

www.vac-con.com



Search:
VacConInc



Search:
Vac-Con

19-Oct-16

* ORDER ENTRY/PROCESSING *

P0120

S/O No: 833278

Picking List

00100

24HR DPF

Terr: 000

Parts

388.34-

Ship 504-952-8413

Slsmn: 000

CoreCHG

0.00

To 278 GENERAL PATTON AVE

C.O.D./Taxable

CoreRET

0.00

Addr MANDEVILLE LA 70471

000-000-0000

Labor

0.00

City Code: 00303/LA

P/O:

Misc

120.00

Total

268.34-

Qty VC Part Number

Desc/Cmnt

0.55%

4 PAC370003A

SEAL-OIL (B370003BG4

42.49

1 1

4 PAC03-01568

GASKET-AXLE SHAFT

6.79

1 2

2 S PACSET401TRB

SET-BEARING 580/572

3

FREIGHT

75.00

4

1- PAC72218CTRB

BEARING-RLR TPRD CON

67.92

1 5

1- DAN110736

SPACER-.472

22.41

1 6

1- PACHM807010TRB

BEARING-RLR TPRD CUP

21.87

1 7

1- PAC217793ETN

KIT-AIR LOCKOUT

414.01

1 8

1- PACHM807049TRB

BEARING-RLR TPRD CON

59.25

1 9

RESTOCKING FEES

45.00

10

...Working!

DEALER **KENWORTH OF SOUTH LOUISIANA(K960)**
 DEALER CODE: **L9378**
 1001 EDWARDS AVE,
 HARRAHAN, LOUISIANA - 70123, United States.
 Ph: 504-818-0100.

CORPORATION **PACCAR PARTS**
 CORP CODE: **1441**
 ATTN: ROBIN LINDSEY, 750 HOUSER WAY NORTH,
 RENTON, Washington - 98055, United States.
 Ph: 425 254 4643.

Reference No: L937809-16					
Customer Name	B&W TRUCKING	Customer ID	1078	Account ID	L9378-0167
FGD Part No.	Qty	Unit Price (in USD)	Total Month Sales (in USD)	Rebate %	Rebate Amount (in USD)
FF5776	7	\$26.05	\$182.35	56.3%	\$102.66
FS19764	5	\$11.60	\$58.00	56.3%	\$32.65
LF14000NN	7	\$23.03	\$161.21	56.3%	\$90.76
		Totals:	\$401.56		\$226.08
Customer Name	FED EX FREIGHT - NEW ORLEANS	Customer ID	-	Account ID	L9378-0099
FGD Part No.	Qty	Unit Price (in USD)	Total Month Sales (in USD)	Rebate %	Rebate Amount (in USD)
AF4878	1	\$13.23	\$13.23	86.7%	\$11.47
FS19729	4	\$7.11	\$28.44	86.7%	\$24.66
LF14000NN	4	\$18.94	\$75.76	86.7%	\$65.68
LF9009	6	\$16.80	\$100.80	86.7%	\$87.39
WF2071	4	\$4.47	\$17.88	86.7%	\$15.50
		Totals:	\$236.11		\$204.71
Customer Name	MATRIX SERVICE	Customer ID	-	Account ID	L9378-0035
FGD Part No.	Qty	Unit Price (in USD)	Total Month Sales (in USD)	Rebate %	Rebate Amount (in USD)
FF2203	1	\$11.03	\$11.03	56.3%	\$6.21
FS1065	1	\$19.21	\$19.21	56.3%	\$10.82
LF3970	1	\$6.12	\$6.12	56.3%	\$3.45
		Totals:	\$36.36		\$20.47
Customer Name	PREMIER TRUCK & EQUIPMENT	Customer ID	-	Account ID	L9378-0116
FGD Part No.	Qty	Unit Price (in USD)	Total Month Sales (in USD)	Rebate %	Rebate Amount (in USD)
AF27876	3	\$39.10	\$117.30	56.3%	\$66.04
AF55005	3	\$51.64	\$154.92	56.3%	\$87.22
FF5632	3	\$10.36	\$31.08	56.3%	\$17.50
FF5776	3	\$26.05	\$78.15	56.3%	\$44.00
FS1065	4	\$19.21	\$76.84	56.3%	\$43.26
LF14000NN	3	\$23.03	\$69.09	56.3%	\$38.90
LF3970	4	\$6.12	\$24.48	56.3%	\$13.78
		Totals:	\$551.86		\$310.70
Customer Name	RELIABLE SOIL COMPANY	Customer ID	-	Account ID	L9378-0121
FGD Part No.	Qty	Unit Price (in USD)	Total Month Sales (in USD)	Rebate %	Rebate Amount (in USD)
FS19765	1	\$12.00	\$12.00	56.3%	\$6.76
		Totals:	\$12.00		\$6.76
Customer Name	SORRENTO LUMBER CO INC	Customer ID	-	Account ID	L9378-0134
FGD Part No.	Qty	Unit Price (in USD)	Total Month Sales (in USD)	Rebate %	Rebate Amount (in USD)
FF5776	1	\$26.05	\$26.05	56.3%	\$14.67
LF14000NN	1	\$23.03	\$23.03	56.3%	\$12.97
WF2127	1	\$16.21	\$16.21	56.3%	\$9.13
		Totals:	\$65.29		\$36.76
Customer Name	SOUTHLAND LEASING OF LOUISIANA	Customer ID	-	Account ID	L9378-0138

FGD Part No.	Qty	Unit Price (in USD)	Total Month Sales (in USD)	Rebate %	Rebate Amount (in USD)
FF2200	1	\$12.40	\$12.40	40.4%	\$5.01
FF2203	1	\$12.41	\$12.41	40.4%	\$5.01
FF5632	1	\$11.66	\$11.66	40.4%	\$4.71
FF5636	1	\$11.66	\$11.66	40.4%	\$4.71
FS1065	1	\$21.61	\$21.61	40.4%	\$8.73
FS19532	1	\$17.62	\$17.62	40.4%	\$7.12
FS19551	1	\$16.14	\$16.14	40.4%	\$6.52
FS19624	1	\$10.27	\$10.27	40.4%	\$4.15
HF35296	1	\$10.33	\$10.33	40.4%	\$4.17
LF3639	1	\$18.92	\$18.92	40.4%	\$7.64
LF3970	1	\$6.88	\$6.88	40.4%	\$2.78
LF9009	1	\$22.97	\$22.97	40.4%	\$9.28
Q347367	1	\$2.27	\$2.27	40.4%	\$0.92
WF2127	1	\$18.23	\$18.23	40.4%	\$7.36
		Totals:	\$193.37		\$78.12
Customer Name	SOUTHLAND LEASING OF LOUISIANA		Customer ID		Account ID L9378-0139
FGD Part No.	Qty	Unit Price (in USD)	Total Month Sales (in USD)	Rebate %	Rebate Amount (in USD)
FS19624	1	\$10.27	\$10.27	40.4%	\$4.15
LF9025	1	\$26.37	\$26.37	40.4%	\$10.65
		Totals:	\$36.64		\$14.80
Customer Name	STAFFORD LOGISTICS INC		Customer ID	3251	Account ID L9378-0143
FGD Part No.	Qty	Unit Price (in USD)	Total Month Sales (in USD)	Rebate %	Rebate Amount (in USD)
FF5776	1	\$26.05	\$26.05	56.3%	\$14.67
LF14000NN	1	\$23.03	\$23.03	56.3%	\$12.97
		Totals:	\$49.08		\$27.63
Grand Totals:			\$1,582.27		\$926.02

Rebate Payment Confirmation for the Month of September - 2016

[[Print](#)] [[Save](#)] [[Close](#)]

**Request for Taxpayer
Identification Number and Certification**

Give form to the
requester. Do not
send to the IRS.

Print or type See Specific Instructions on page 2.	Name (as shown on your income tax return) KENWORTH OF SOUTH LOUISIANA LLC	
	Business name, if different from above	
	Check appropriate box: <input type="checkbox"/> Individual/Sole proprietor <input type="checkbox"/> Corporation <input type="checkbox"/> Partnership <input type="checkbox"/> Limited liability company. Enter the tax classification (D=disregarded entity, C=corporation, P=partnership) ▶ <input type="checkbox"/> Other (see instructions) ▶	<input type="checkbox"/> Exempt payee
	Address (number, street, and apt. or suite no.) 3699 WEST PARK AVE	Requester's name and address (optional) PLEASE REMIT TO: PO BOX 1450 GRAY LA 70359
	City, state, and ZIP code GRAY LA 70359	List account number(s) here (optional)

Part I Taxpayer Identification Number (TIN)

Enter your TIN in the appropriate box. The TIN provided must match the name given on Line 1 to avoid backup withholding. For individuals, this is your social security number (SSN). However, for a resident alien, sole proprietor, or disregarded entity, see the Part I instructions on page 3. For other entities, it is your employer identification number (EIN). If you do not have a number, see *How to get a TIN* on page 3.

Note. If the account is in more than one name, see the chart on page 4 for guidelines on whose number to enter.

Social security number
OR
Employer identification number
90 : 0196371

Part II Certification

Under penalties of perjury, I certify that:

- The number shown on this form is my correct taxpayer identification number (or I am waiting for a number to be issued to me), and
- I am not subject to backup withholding because: (a) I am exempt from backup withholding, or (b) I have not been notified by the Internal Revenue Service (IRS) that I am subject to backup withholding as a result of a failure to report all interest or dividends, or (c) the IRS has notified me that I am no longer subject to backup withholding, and
- I am a U.S. citizen or other U.S. person (defined below).

Certification instructions. You must cross out item 2 above if you have been notified by the IRS that you are currently subject to backup withholding because you have failed to report all interest and dividends on your tax return. For real estate transactions, item 2 does not apply. For mortgage interest paid, acquisition or abandonment of secured property, cancellation of debt, contributions to an individual retirement arrangement (IRA), and generally, payments other than interest and dividends, you are not required to sign the Certification, but you must provide your correct TIN. See the instructions on page 4.

Sign
Here

Signature of
U.S. person ▶

Date ▶ 5/2/12

General Instructions

Section references are to the Internal Revenue Code unless otherwise noted.

Purpose of Form

A person who is required to file an information return with the IRS must obtain your correct taxpayer identification number (TIN) to report, for example, income paid to you, real estate transactions, mortgage interest you paid, acquisition or abandonment of secured property, cancellation of debt, or contributions you made to an IRA.

Use Form W-9 only if you are a U.S. person (including a resident alien), to provide your correct TIN to the person requesting it (the requester) and, when applicable, to:

- Certify that the TIN you are giving is correct (or you are waiting for a number to be issued),
- Certify that you are not subject to backup withholding, or
- Claim exemption from backup withholding if you are a U.S. exempt payee. If applicable, you are also certifying that as a U.S. person, your allocable share of any partnership income from a U.S. trade or business is not subject to the withholding tax on foreign partners' share of effectively connected income.

Note. If a requester gives you a form other than Form W-9 to request your TIN, you must use the requester's form if it is substantially similar to this Form W-9.

Definition of a U.S. person. For federal tax purposes, you are considered a U.S. person if you are:

- An individual who is a U.S. citizen or U.S. resident alien,
- A partnership, corporation, company, or association created or organized in the United States or under the laws of the United States,
- An estate (other than a foreign estate), or
- A domestic trust (as defined in Regulations section 301.7701-7).

Special rules for partnerships. Partnerships that conduct a trade or business in the United States are generally required to pay a withholding tax on any foreign partners' share of income from such business. Further, in certain cases where a Form W-9 has not been received, a partnership is required to presume that a partner is a foreign person, and pay the withholding tax. Therefore, if you are a U.S. person that is a partner in a partnership conducting a trade or business in the United States, provide Form W-9 to the partnership to establish your U.S. status and avoid withholding on your share of partnership income.

The person who gives Form W-9 to the partnership for purposes of establishing its U.S. status and avoiding withholding on its allocable share of net income from the partnership conducting a trade or business in the United States is in the following cases:

- The U.S. owner of a disregarded entity and not the entity.