

LED DOUBLE-SIDED T8
SIGN RETROFIT SERIES 2**PRODUCT DESCRIPTION:**

Featuring high quality, energy-saving LED modules on two sides, MaxLite LED Double-Sided T8 Lamps are designed for lighting marquees, roadway signs and many other types of outdoor and indoor displays. Designed to replace T12 HO fluorescent tubes, MaxLite LED lamps reduce energy usage by up to 62 percent and offer a much longer, maintenance-free life of 50,000 hours. Unlike standard LED lamps with 120° to 180° beam angles, the MaxLite Double-Sided T8 Lamp offers a virtual 360-degree distribution with individual optics that create bright and uniform illumination without any dark spots. The lamp is issued in a 6500K color temperature to provide the best color quality and visual impact; additional color temperatures are available on custom order.

FEATURES:

- Input Power: 18W - 36W
- Input Voltage: 120-277VAC, ballast bypass
- Lumens: 2,100-5,000
- Double-sided LEDs designed for a virtual 360° illumination
- 330° beam angle
- Individualized optics for superior light distribution and uniformity
- Standard G13 base with nonrotatable R17d end caps
- Integrated heat sink for cool operation and longevity
- Color Rendering Index (CRI): ≥80
- CCT: 6500K
- Lumen Maintenance (L70): 50,000 hour life
- THD <20%
- Power Factor: ≥0.9
- Instant-on, flicker-free, mercury-free
- No UV or IR minimizes fading or discoloration
- Durable polycarbonate construction
- Non-Dimmable

- 5 year limited warranty
- Suitable for use in dry and damp locations
- Not for use with T12 magnetic or electronic ballasts
- Not for use with T8 magnetic or electronic ballasts

APPLICATION:

- Box sign lighting
- Light boxes
- Backlit displays
- General lighting



SPECIFICATIONS:

ITEM	SPECIFICATION	DSL18T8SE465	DSL24T8SE565	DSL30T8SE665	DSL36T8SE865
GENERAL PERFORMANCE	Power Consumption	18W	24W	30W	36W
	Lumens Delivered	2,100	2,800	4,100	5,000
	Efficacy (lm/W)	117	117	137	137
	CRI	83			
	Beam Angle	330°			
	Color Temperature (CCT)	6500K			
	Lumen Maintenance (L70)	50,000 Hours			
ELECTRICAL	Power Factor	≥ 0.90			
	Input Voltage	120V-277V, 50/60 Hz			
PHYSICAL	Operating Temperature	-4°F to 104°F (-20° - 50° C)			
	Lens	Frosted			
	Base	G13 base with nonrotatable R17d end cap			
	Dimension (MOL" x Dia.)	45.91" x 1.11"	57.91" x 1.11"	69.91" x 1.11"	93.91" x 1.11"
CERTIFICATION	Certification	Classified UL, Recognized Component			
	Material Usage	RoHS compliant; no mercury			
	Environment	Dry or Damp			
	Warranty	5 Years			

Lighting layouts and spacing criteria available upon request

ORDERING:

ITEM NUMBER	ORDER CODE	T12HO REPLACEMENT EQUIVALENT	LAMP WATTAGE (W)	LUMENS	INPUT VOLTAGE (V)	CCT	CRI	BEAM ANGLE (°)
4FT								
DSL18T8SE465	14098999	60W	18W	2100	120-277V	6500K	83	330°
5FT								
DSL24T8SE565	14099000	75W	24W	2,800	120-277V	6500K	83	330°
6FT								
DSL30T8SE665	14099001	85W	30W	4,100	120-277V	6500K	83	330°
8FT								
DSL36T8SE865	14099002	110W	36W	5,000	120-277V	6500K	83	330°

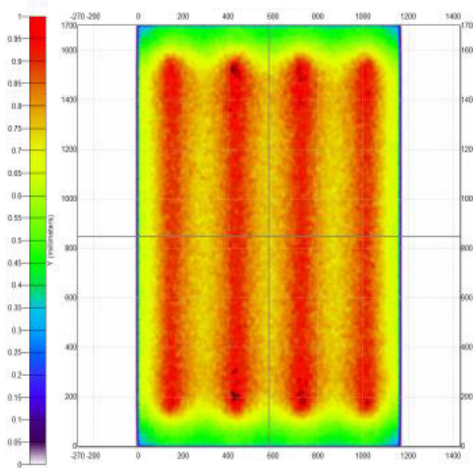
LINE DRAWING



Ø 1.11" (28.4mm)

LIGHT BOX COMPARISON

FLUORESCENT T12HO



LED T8

