

MOBILE FOOD/BEVERAGE SERVICE ASSETS, MOBILE SHOWERS, MOBILE BATHROOMS, MOBILE BUNK/DORMITORIES, AND DISASTER RELIEF CUSTOMIZED UNITS.

PREPARED FOR: US FEDERAL AGENCIES,
DISASTER RELIEF AGENCIES, AND THE U.S. MILITARY



TABLE OF CONTENTS

03	WHO WE ARE
04	OUR INTENTION AS A GOVERNMENT CONTRACTOR
05-08	MOBILE FOOD/BEVERAGE SERVICE ASSETS
09-10	MOBILE SHOWERS
11-12	MOBILE BATHROOMS
13-14	MOBILE BUNK/DORMITORIES
15	THANK YOU



WHO WE ARE

Coast to Coast Custom Mobile Vending is an experienced and veteran owned team of dedicated craftsmen and entrepreneurs, passionate about providing affordable, reliable, and high-quality mobile assets to clients around the world.

With headquarters based on Charleston, SC, and manufacturing facilities in Eastman/Douglas, GA—what we provide as a federal contractor are fully operational mobile food/beverage, mobile bathroom/bathing/shower units, mobile bunk/dorm units, and customized disaster relief units for serving food, delivering/administering/storing medicine, and anything else needed that operates out of a mobile trailer, truck, or van.

Working with Coast to Coast as a federal contractor means that your team and those that will benefit from our products/services will receive the best price, package, quality, and reliability—delivered anywhere you need in the US or abroad. Our unique relationships with our manufacturing partners means we can deliver on your contract fast, accurately, and reliably—and our small/nimble team has an open line of communication 24/7.



THE FOUR PILLARS OF THE COAST TO COAST EXPERIENCE

.01 Experiences

We delight our clients by enabling memorable experiences for their customers and communities

.02 Creativity

We build ideas and equip our clients with assets to push boundaries and explore the limits of success

.03 Mobility

We create and deliver products and services designed to move, adapt, thrive and outlast

.04 Growth

We grow by achieving our goals and serving our clients with tools, ideas, and strategies to increase income and lifestyle



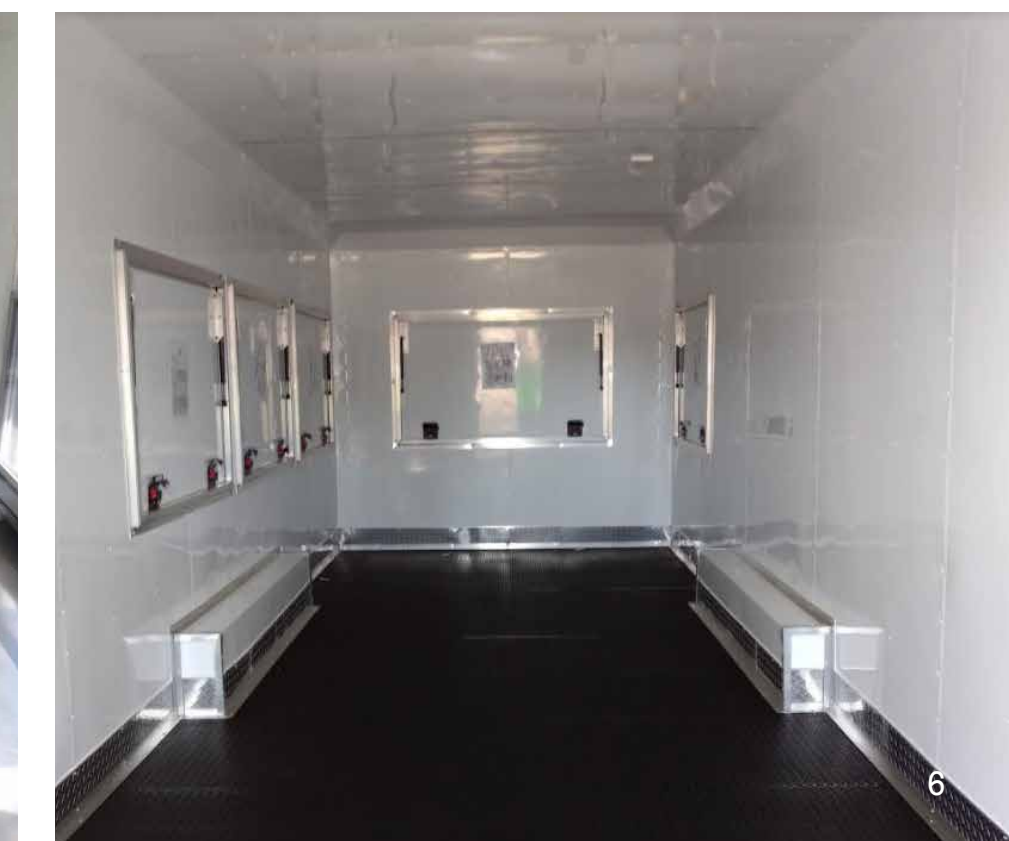
OUR INTENTION AS A GOVERNMENT CONTRACTOR

- .01** To serve as a dependable, reliable, and trustworthy contracting partner, ready to consult and deploy high-quality mobile vending or disaster relief assets to any base, branch, area, or port—in order to help those in need.
- .02** Build and deliver customized, affordable, and valuable mobile units that service a broad spectrum of needs in the community of various federal agencies, branches of the military, or disaster relief agencies that require our product.
- .03** Go above and beyond what is required within a contract, by providing additional units free of charge if needed, depending on the circumstances and contract the units are associated with. Additionally—to provide services and unit delivery capabilities in relation to time-frame, amount, and design—that our clients can count on and trust—in peace, war, or disaster relief times.

MOBILE FOOD/BEVERAGE SERVICE ASSETS

The following photographs represent the interior/exterior of our mobile food services for customized trailers, and our design renderings/product details. Our trailers/trucks can be designed, customized, and built for any need, shipping method (plane, ship, rail), and food/beverage being served. The units can be as complex, or simple as required—based on the contractual needs for our clients.





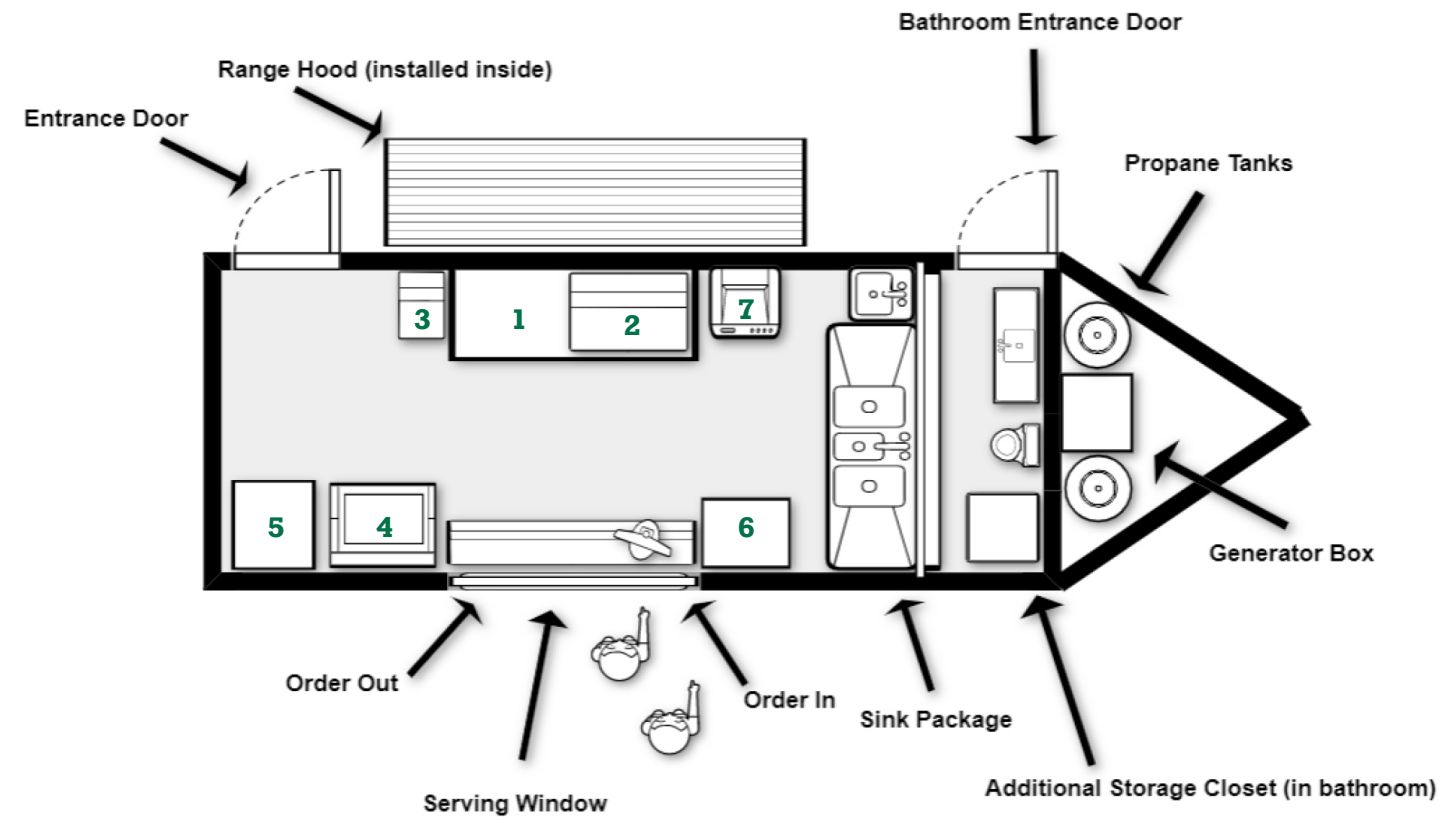


WHAT IS INCLUDED IN THIS MOBILE VENDING TRAILER

These sections encompass the entirety of this mobile asset. The Trailer Details, Equipment & Appliance Details, and Additional Items sections on this page represent the turnkey solution for a trailer/truck from Coast to Coast. Our consultative methods for single or multi-unit packages consist of a detailed process that ensures our clients receive exactly what they need, in the exact design they require, delivered on the exact day that they request.

Trailer Details

- **Chassis Brand:** 8.5 X 24 ft. Cynergy Concession Trailer
- **Exterior Color:** Wrapped (see additional items—smooth exterior)
- **Interior Color:** White Metal Walls, Ceilings, Cabinetry
- **A/C-Heating System:** 13.5k BTU Heat/AC System
- **Doors:** Two Entrance Doors (one RV style w/screen, one for bathroom entrance)
- **Serving Windows:** One 3 x 8 ft. serving window w/exterior flip shelf, drop-down glass/screens
- **Ceiling/Walls/Insulation:** 7.5 ft. extended height ceilings, insulated unit
- **Exterior Trim Color:** Silver Trim
- **Shelving/Cabinetry System:** Sinks/Serving Windows/Prep Tables (locations)
- **Axles:** Premium Dexter Axles (10,400 lb capacity)
- **Flooring:** ATP Diamond Flooring (silver metal)
- **Tires:** 16 inch Radial premium Tires
- **Tongue Jack:** Electric/Motorized tongue jack (extended)
- **Electrical System:** 50 AMP Box (exterior), Interior Lighting (two switches)
- **Electrical Outlets:** Five 110 Volt Outlets (GFI regulation outlets near sink system)
- **LP System:** Two 100 lb tanks, Black Iron Piping, Regulator, Safety Valves
- **Fire Suppression System:** Buckeye Fire Suppression Package
- **Bathroom Package:** Toilet/Sink, 20 gallon fresh-water/18 gal waste-water (entrance door, finished walls, storage cabinet)
- **Water/Sink Package:** Triple sink w/hand sink, 40 gal fresh-water/50 gal grey-water (electric pump/heater)
- **Range Hood System:** 12 ft. Range Hood w/lighting system
- **Ventilation Windows:** Three 18 x 24 in. ventilation windows (One in bathroom)
- **Generator Box:** Stainless steel generator box w/locking door/slide-pan



Equipment & Appliance Details

(The numbered items above correlate with the specific type of equipment/appliances below)

- 1** 30 in. x 84 in Stainless Steel work table w/lower shelf
- 2** Wolf 48 in. flat-top griddle (lp)
- 3** Frymaster double-bay 40 lb. fryer (lp)
- 4** Beverage Air 48 in. cold preparation table (electric)
- 5** Beverage Air Large/Tall Fridge (electric)
- 6** Beverage Air Large/Tall Freezer (electric)
- 7** Vulcan 4-burner range/oven (lp)

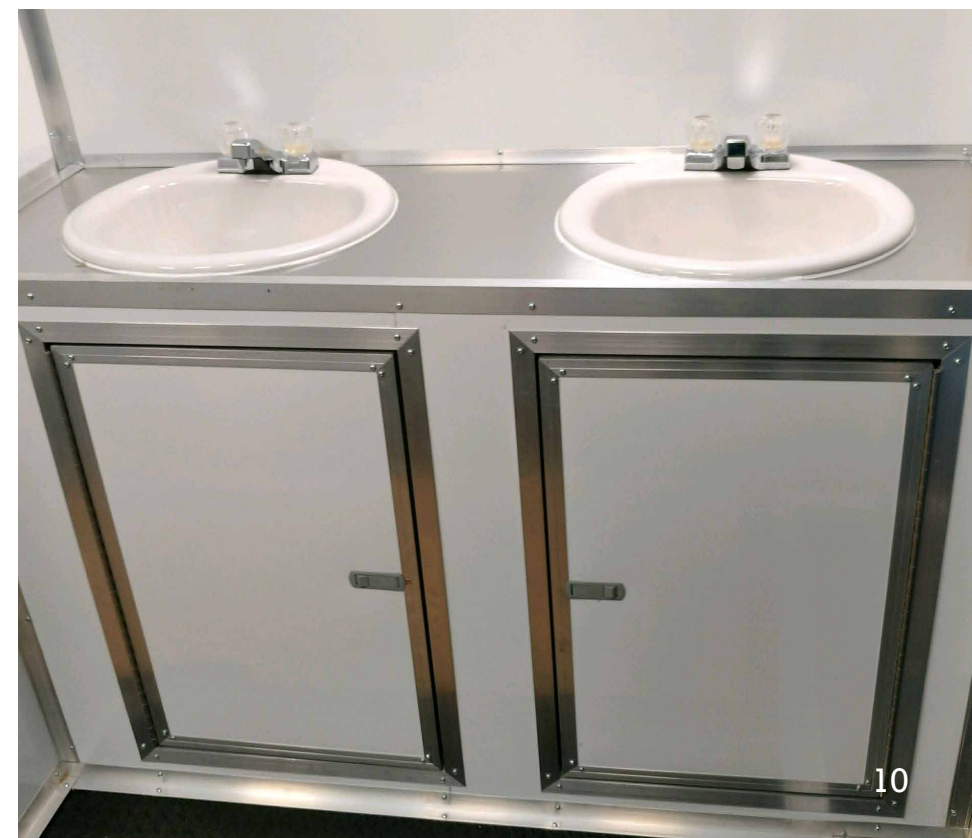
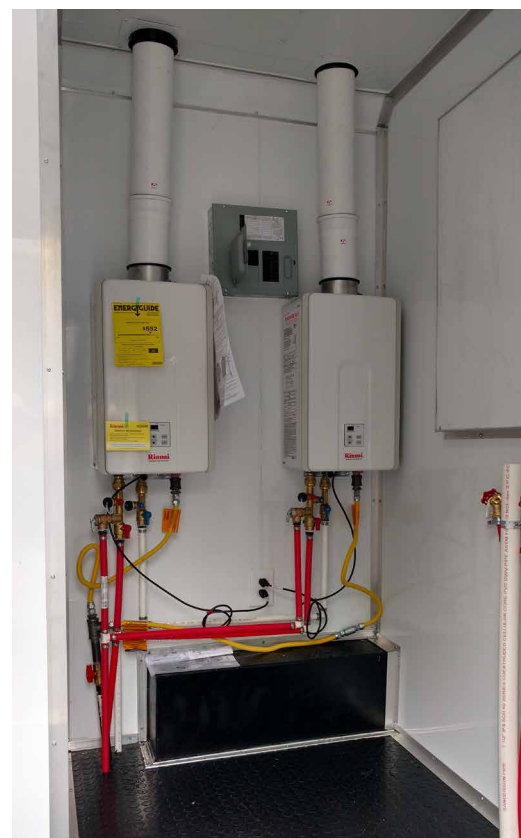
Additional Items

- **Branded Trailer Wrap:** Design Process, Installation (CHS Wraps company partner)
- **MasterLock KeySets:** Three additional master lock sets for generator box, and both entrance doors (unit comes with lock/key systems standard as well)
- **Sound/Lighting Package:** Under-chassis lighting package w/ interior/exterior blue-tooth sound system

MOBILE SHOWERS

The following photographs represent the interior/exterior of our shower units—all trailer units—regardless of type—are high-quality brand name trailers (Cynergy, or Diamond), and can be built and customized for any shower head amount, sink amount, water bladder/storage capacities, and any other specifications required by our clients. Privacy barriers, walls, sinks, and special requests for entrance doors, lighting packages, and towing packages can easily be built for our clients. Additionally—all shower mobile units can be customized with a bathroom, kitchen, or other areas required by our clients.

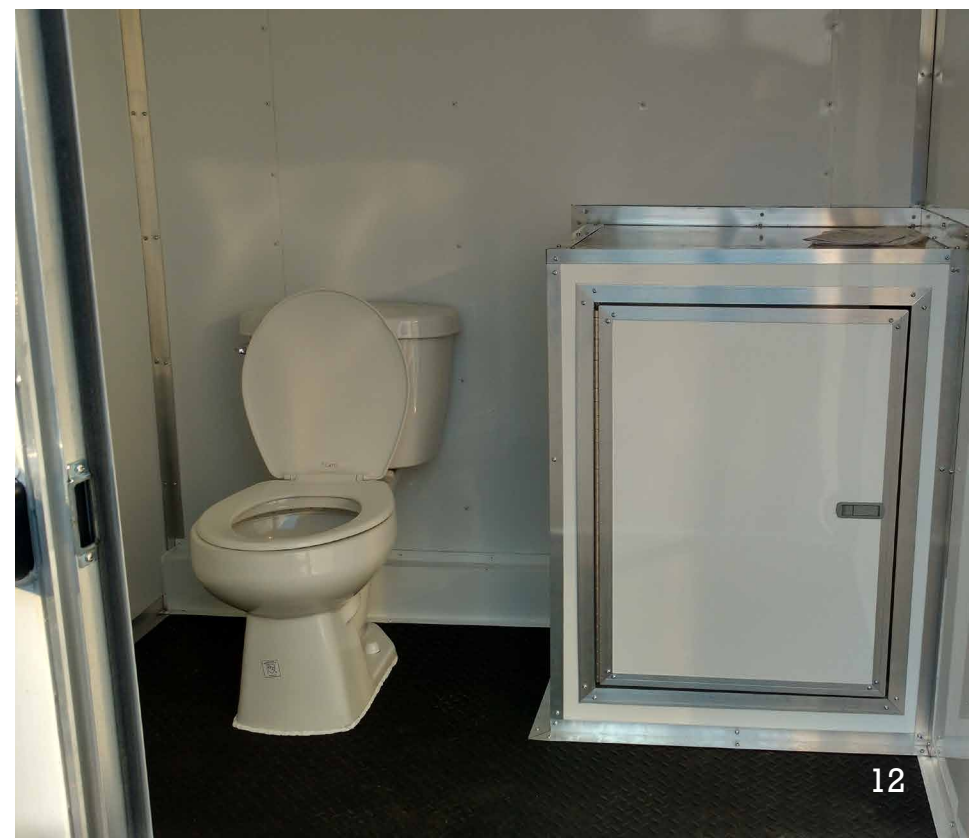




MOBILE BATHROOMS

The following photographs represent the interior/exterior of our mobile bathroom units—all trailer units—regardless of type—are high-quality brand name trailers (Cynergy, or Diamond), and can be built and customized for any toilet amount, sink amount, water bladder/storage capacities, and any other specifications required by our clients. Privacy barriers, walls, sinks, and special requests for entrance doors, lighting packages, and towing packages can easily be built for our clients. Additionally—all bathroom mobile units can be customized with a shower, kitchen, or other areas required by our clients.

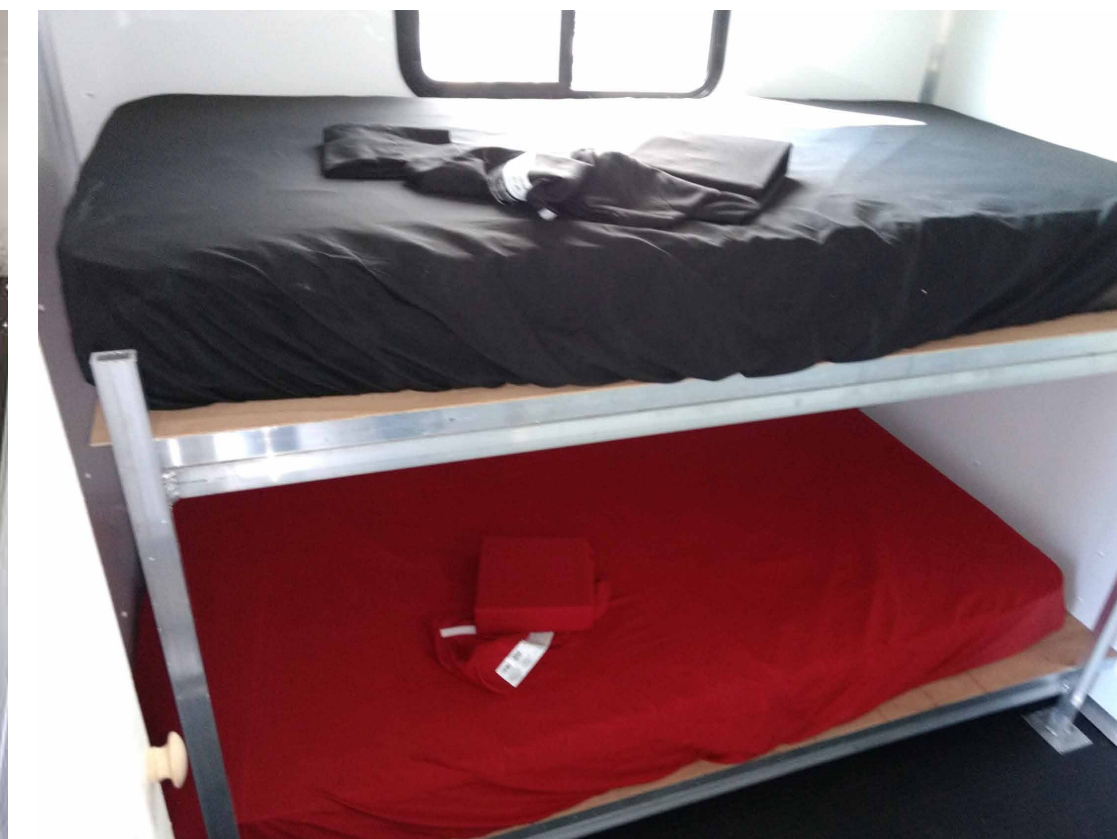




MOBILE BUNK/DORMITORIES

The following photographs represent the interior/exterior of our mobile bunk/dormitory units. Our bunk assets can be RV style, or trailer style—and our bunk areas can be customized with many different bed types, privacy walls, or any special requests required by our clients. Additionally—all bunk/dormitory mobile units can be customized with a bathroom, shower, kitchen, or other areas required by our clients.





THANK YOU

TYLER HAGAN | OWNER
tyler@coasttocoastcmv.com

MICAH TREXLER | CO-OWNER AND AIR FORCE MEDIC VETERAN
micah@coasttocoastcmv.com

SHANE DILLING | TRAILER INSTALLATION DIRECTOR
shane@coasttocoastcmv.com

JORGE NARANJO | CREATIVE DIRECTOR
jorge@coasttocoastcmv.com

