

DATE: 11/13/2018

INVITATION TO BID  
THIS IS NOT AN ORDER

Page: 4

BID NO.: 50-00124825

**JEFFERSON PARISH**

PURCHASING DEPARTMENT  
P.O. BOX 9  
GRETN, LA. 70054-0009  
504-364-2678

VENDOR: 27118 BLANK BID COPY VENDOR

BUYER: DMEVANS

As per LSA-RS 47:301 et seq., all governmental bodies are excluded from payment of sales taxes to any Louisiana taxing body. Quotations shall be based on F.O.B. Agency warehouse or jobsite, anywhere within the Parish as designated by the Purchasing Department.

JEFFERSON PARISH reserves the right to cancel all or any part of an order if not shipped promptly. No charges will be allowed for parking or cartage unless specified in quotation. The order must not be filled at a higher price than quoted. JEFFERSON PARISH reserves the right to cancel at any time and for any reason by issuing a THIRTY (30) day written notice to the contractor.

JEFFERSON PARISH is expecting all products to be new and all work to be done in workman-like manner, according to standard practices. Any deviations or alteration from the specifications must be indicated on the bid form for each item and upon request, product data for same must be submitted by the time specified by the Purchasing Department.

**DELIVERY: FOB JEFFERSON PARISH**

INDICATE DELIVERY DATE ON EQUIPMENT AND SUPPLIES

9-11 DAYS

INDICATE STARTING TIME (IN DAYS) FOR CONSTRUCTION WORK

INDICATE COMPLETION TIME (IN DAYS) FOR CONSTRUCTION WORK

In the event that addenda are issued with this bid, bidders MUST acknowledge all addenda on the bid form. Bidder must acknowledge receipt of an addendum on the bid form as indicated. Failure to acknowledge any addendum on the bid form will result in bid rejection.

Acknowledge Receipt of Addenda: NUMBER: \_\_\_\_\_

NUMBER: \_\_\_\_\_

NUMBER: \_\_\_\_\_

NUMBER: \_\_\_\_\_

LOUISIANA CONTRACTOR'S LICENSE NO.: (if applicable) \_\_\_\_\_

*** ALL BIDDERS MUST COMPLETE SECTION BELOW ***	
FIRM NAME: <u>Cmsco</u>	
SIGNATURE: (Must be signed here)	TITLE: <u>SALES</u>
PRINT OR TYPE NAME: <u>JEFF DEVILIER</u>	
ADDRESS: <u>1840 LTA RD</u>	
CITY, STATE: <u>METairie, LA</u>	ZIP: <u>70001</u>
TELEPHONE: <u>(504) 835-7319</u>	FAX: <u>(504) 832-0820</u>
EMAIL ADDRESS: <u>JEFF@Cmscoind.com</u>	

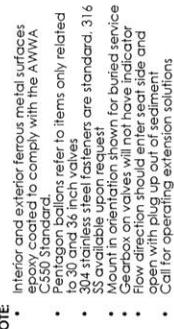
17237

## INVITATION TO BID FROM JEFFERSON PARISH - continued

BID NO.: 50-00124825

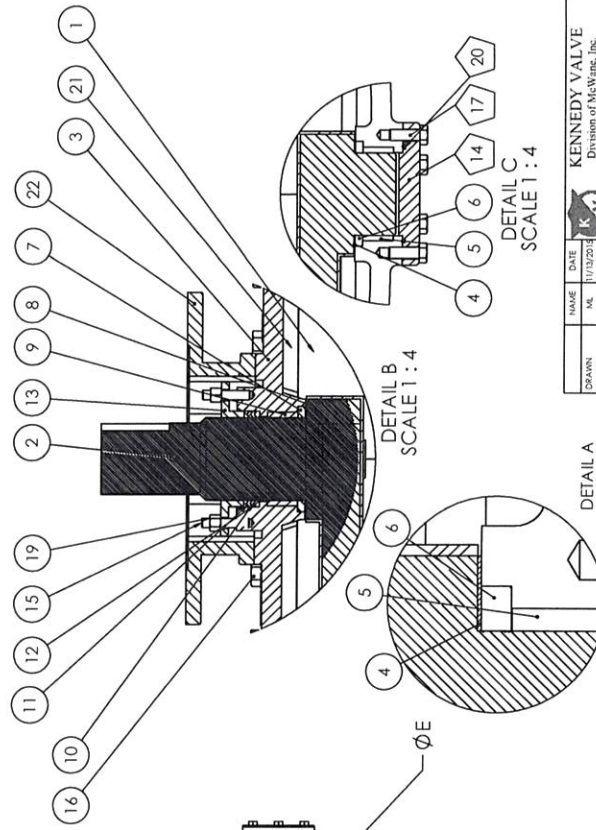
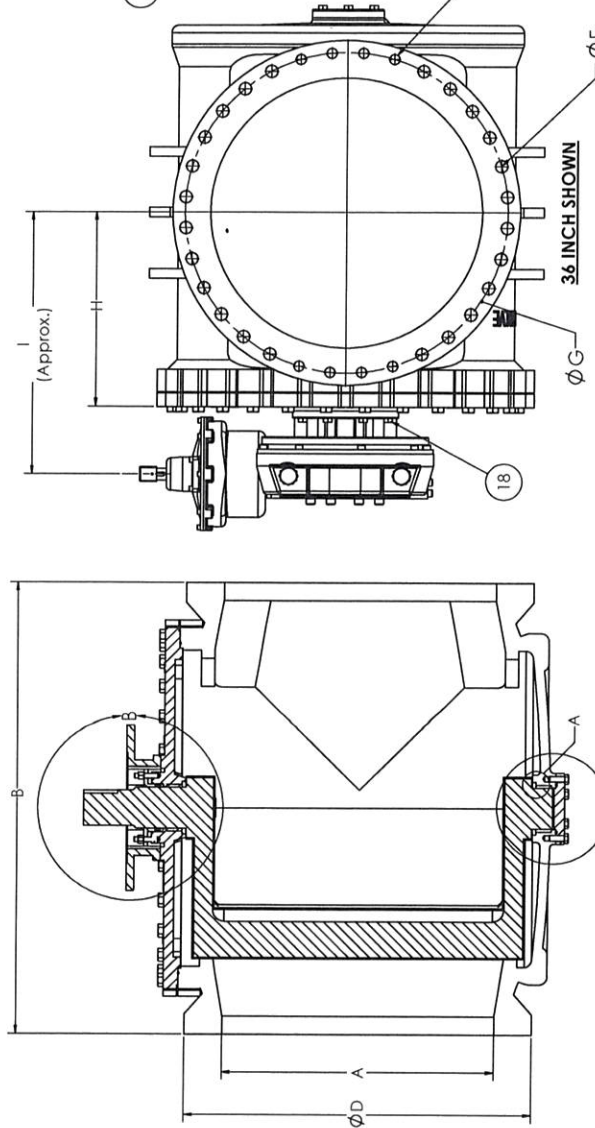
SEALED BID

ITEM NUMBER	QUANTITY	U/M	DESCRIPTION OF ARTICLES	UNIT PRICE QUOTED	TOTALS
1	1.00	EA	ONE TIME PURCHASE OF A VALVE PLUG  0001 - Valve, plug, 24 inch x 42 inch face, eccentric, cast iron body, solid ductile iron plug with nitrile elastomer coating, 100 percent port, nickel seat, Pratt no. 2400-601FND1AGHW (0625150)	17237 <sup>-</sup>	17237 <sup>-</sup>




- Interior and exterior ferrous metal surfaces epoxy coated to comply with the AWWA C550 Standard.
- Pentagons balloons refer to items only related to 30 and 36 inch valves
- 304 stainless steel fasteners are standard, 316 SS available upon request
- Mount in orientation shown for buried service
- Gearbox on valves will not have indicator
- Flow direction should enter seat side and open with plug up out of sediment
- Call for operating extension solution

ITEM NO.	DESCRIPTION	MATERIAL
1	Body - Flanged	ASTM A336 GR. 65-4512 or 70-5005
2	Plug	ASTM A336 GR. 65-4512 or 70-5005
3	Cover	ASTM A336 GR. 65-4512 or 70-5005
4	Bottom Thrust Washer	PTFE
5	Top Thrust Washer	PTFE
6	Oil Guard Shell Seal (Lower)	STAINLESS ALLOY 3216
7	Oil Guard Shell Seal (Upper)	NBR
8	Upper Thrust Washer	PTFE
9	Insert Bearing	STAINLESS ALLOY 3216
10	1/2 inch locking AN225-55	NBR
11	1/2 inch packing AN225-55	NBR
12	Wormion packing AN225-55	ASTM A336 GR. 65-4512 or 70-5005
13	Wormion for Actuator	ASTM A336 GR. 65-4512 or 70-5005
14	Wormion for Actuator	ASTM A336 GR. 65-4512 or 70-5005
15	Cover Seal	Stainless steel ASTM A276, 304 or 316
16	Hexagon Cover Bolt	Stainless steel ASTM A276, 304 or 316
17	Hexagon Cover Bolt	Stainless steel ASTM A276, 304 or 316
18	Hexagon Adapter Bolt	Stainless steel ASTM A276, 304 or 316
19	Hex Nut - Cover Bolt	Stainless steel ASTM A276, 304 or 316
20	Hex Nut - Cover Bolt	Stainless steel ASTM A276, 304 or 316
21	C-ring Top Cover	NBR
22	C-ring Top Cover	NBR
23	Adapter - drive	ASTM A336 GR. 65-4512 or 70-5005

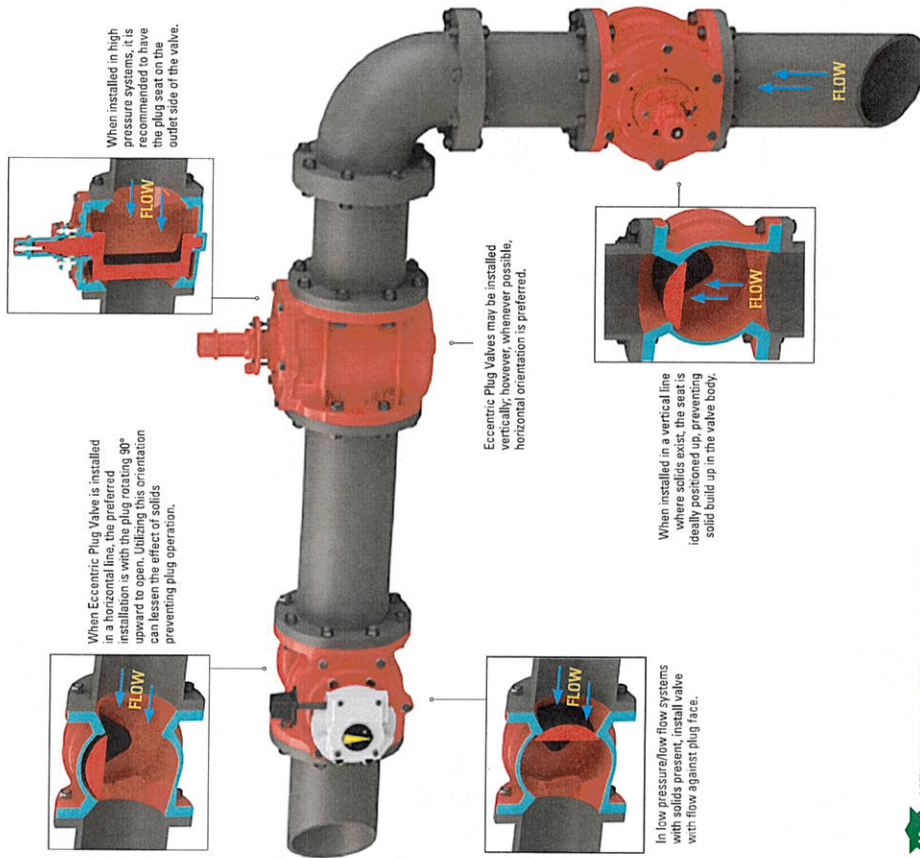


A [VALVE SIZE]	B	C	D	E	F	G	H	I	WEIGHT [LBS]	ROCKY GEAR	GEAR RATIO	C.V. AVG. [U.S. gal/min]	WATER WORKING PRESSURE [PSI]	HYDROSTATIC TEST [PSI]
14	17.00	1.38	Ø21.00	8 x 1/8 x UNS-28	4 x Ø1.13 THRU	Ø18.75	12.88	18.00	720	A8200N	109:1	5789	150 PSI	300 PSI
16	17.75	1.44	Ø23.50	8 x 1/8 x UNS-28	8 x Ø1.13 THRU	Ø21.25	14.91	22.50	850	A8200N	109:1	6956	150 PSI	300 PSI
18	21.50	1.58	Ø25.50	8 x 1/8 x UNS-28	8 x Ø1.25 THRU	Ø22.75	16.42	21.50	1150	A8200N/4	109:1	7872	150 PSI	300 PSI
20	23.50	1.69	Ø27.50	8 x 1/8 x UNS-28	12 x Ø1.25 THRU	Ø25.00	17.09	22.25	1425	A81950N/P84	217:1	7872	150 PSI	300 PSI
24	24.00	1.86	Ø32.00	8 x 1/8 x UNS-28	12 x Ø1.38 THRU	Ø29.20	21.19	26.50	2325	A84600/P86	448:1	30930	150 PSI	300 PSI
30	51.00	2.13	Ø38.75	8 x 1/2 x UNS-28	12 x Ø1.38 THRU	Ø34.00	22.06	30.69	5700	W682	720:1	48374	150 PSI	300 PSI
36	60.00	2.58	Ø46.00	8 x 1/2 x UNS-28	36 x Ø1.63 THRU	Ø42.75	25.81	34.75	8400	W69	960:1	7459	150 PSI	300 PSI

 <b>KENNEDY VALVE</b> Division of McWane, Inc. ONE EAST WATER STREET, ELKLAND, N.Y. 14051		14" 30" FULL GEAR FLG EPV (6412-FF) w/ ROTOR GEAR for Bury Service		REV	3	SHEET 1 OF 1 Not for Construction. To be used for design and engineering purposes only.
TITLE:		SIZE		DWG. NO.		
DATE		DATE				
NAME		NAME				
DRAWN CHECKED APPROVED		DON'T SCALE DRAWING SEE SCALE WEIGHT		SEE SCALE WEIGHT		



# INSTALLATION GUIDELINES



PUB-EP-0905

## 100% PORT ECCENTRIC PLUG VALVES

AWWA C517 • 3" - 12" — 175 PSI • 14" - 48" — 150 PSI  
• FLANGED AND MECHANICAL JOINT END  
CONNECTIONS AVAILABLE



# THE KENNEDY VALVE 100% ECCENTRIC PLUG VALVE

WITH A PROVEN DESIGN, THE KENNEDY VALVE 100% PLUG VALVE HAS ESTABLISHED ITSELF IN THE MARKET PLACE AS A RELIABLE AND ENGINEERED PRODUCT. OVER MANY YEARS, THE DESIGN HAS PROVEN DEPENDABLE IN A VARIETY OF SERVICE APPLICATIONS.

## APPLICATIONS

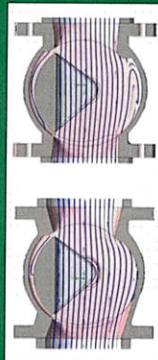
- Wastewater Service
- Lift Stations
- Heavy Solids
- Slurries/Grit
- Water Services
- Pump Service
- Throttling/Modulating/Control/Balancing
- Vertical Piping Applications
- Where Positive Shutoff Required

## RECTANGULAR PORT DESIGN

The cylindrical plug and rectangular port provide a rotational alignment by the eccentric motion making a uniform and full contact with the welded in nickel seat. Unlike circular port designs that have a point-to-point seating where engagement and wear can be an issue, the rectangular port makes a uniform and full contact without the need for exact alignment of the plug in the body.

## ACTUATION

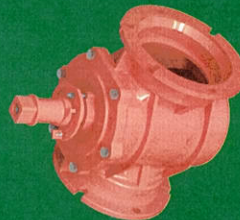
Kennedy Valve has furnished valves with many assorted type of actuators to operate our valves. Our engineers have extensive experience with electric, pneumatic, and hydraulic actuators on our plug valves and regularly work with most major actuator suppliers.



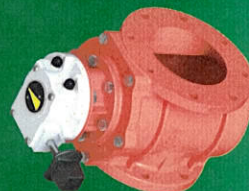
Compared with other designs, the Kennedy/Clow Valve Full Flow design allows laminar flow in the body, resulting in low head loss. This allows for passage of larger solids preventing clogging or build up.

## ACCESSORIES AND OPTIONS

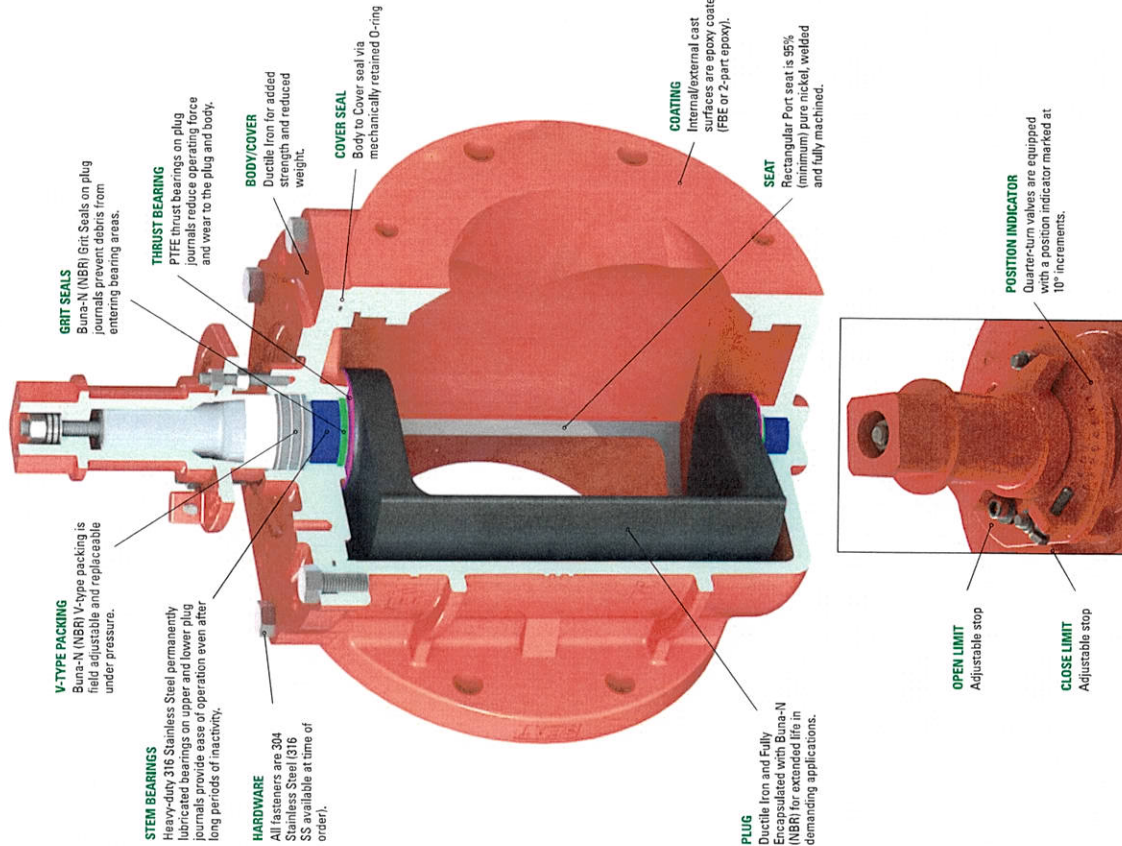
A full line of accessories and options are available that include extension stems, extended bonnets, floor stands, valve boxes, operating nuts, hand wheels, levers, positioners, fully bi-directional rating, switches, and solenoid valves as well as speed control valves.



Manual valves available with 2" square operating nut.



Valves commonly supplied with gearing.



\*Internal components different colors for illustration purposes only.