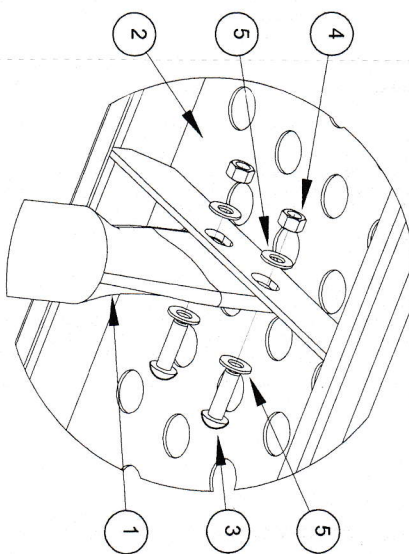
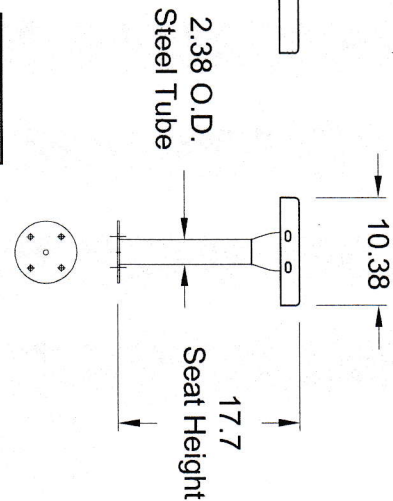
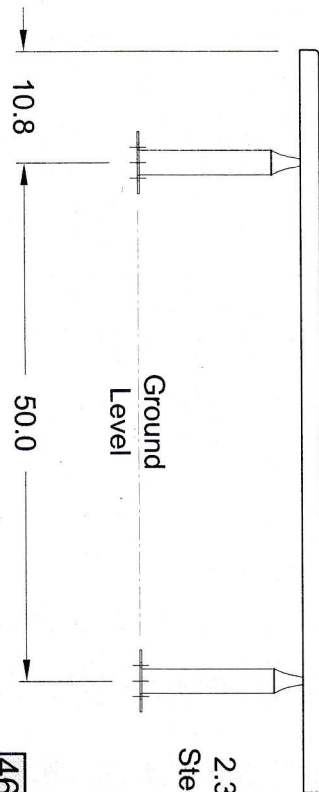
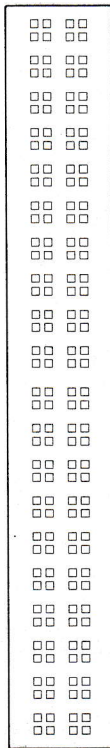


# ASSEMBLY INSTRUCTIONS AND SPECIFICATIONS

*Item #0007*



SEAT FASTENING  
DETAIL

## MATERIAL SPECIFICATIONS:

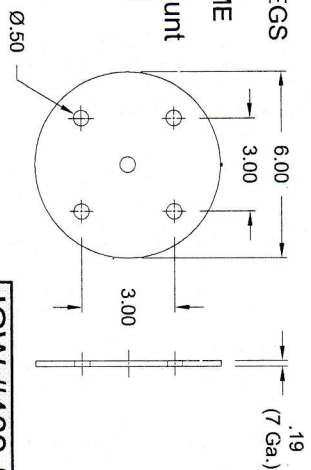
TOPS & SEATS - 13 GA HR

LEGS - 2-3/8" DIA x .125" HSS TUBING  
BRACKETS/BASE PLATES - 7 GA HR

NOTE: Anchoring Hardware Not Included

- 462-523** DIAMOND PERF - PAINTED SEAT / PAINTED LEGS
- 462-505** SQ PERF - PAINTED SEAT / PAINTED LEGS
- 462-564** SQ PERF - PAINTED SEAT / GALV FRAME

Surface Mount  
Plate Detail  
Scale 3 x



**SPORTS BENCH, Surface Mount, 6 Ft.,**  
**Square Perforated Steel Seats**  
**MODEL: SBS-6JPSQ (71918300)**

ITEM NO.	DESCRIPTION	PART NO.	QTY
1	Sports Bench Leg, Surf. Mount Custom	55208700	2
2	6' Seat, Square Perf. Pattern, Joinable	01306700	1
3	3/8-16 x 1.25 SS, B.H. Security Bolt	104921	4
4	HEX NUT, 3/8-16 SS	200009776	4
5	FLAT WASHER, 3/8 ANSI TYPE A SS	117005	8

**JGW #462-505**