



POINTE COUPEE PARISH SCHOOL BOARD

Technology Department

Proposal Cover Page

I. Vendor Information

Vendor Name			
Vendor Address			
Name of primary contact			
Phone		Email	

II. Type of Proposal

☐ Turn Key ☐ Equipment ☐ Wiring

III. Summary of Proposal

Indoor Option 1		Indoor Option 2		Indoor Option 3	
Make/Model	Unit Cost	Make/Model	Unit Cost	Make/Model	Unit Cost
Outdoor Option 1		Outdoor Option 2		Outdoor Option 3	
Make/Model	Unit Cost	Make/Model	Unit Cost	Make/Model	Unit Cost
DVR Option 1		DVR Option 2		DVR Option 3	
Make/Model	Unit Cost	Make/Model	Unit Cost	Make/Model	Unit Cost

Site costs shall be all-inclusive (including, shipping cost, installation of equipment, user training, technical support, licensing, wiring, and trash removal) and represent complete installation and integration with the existing network.

Site	Site Cost (Option 1)	Site Cost (Option 2)	Site Cost (Option 3)
STEM Magnet Academy of Pointe Coupee			
Livonia High School			
Rosenwald Elementary			
Rougon Elementary			
Upper Pointe Coupee			
Valverda Elementary			

IV. Scoring (Will be completed once bid is reviewed in its entirety)

PCPSB Use Only/Vendors should leave this portion (section IV) blank

Rating Factor	Weight	Score
Price	.50	
Caliber of Product	.20	
Responsiveness to RFP (see subcategories)		
Vendor provided adequate information about products, pricing, and services	.10	
Adherence Format Requirements	.10	
References	.10	

Scoring Signatures:

CYPRESS MULTIMEDIA, LLC

ii. Section 1: Business License

Louisiana State Fire Marshal
Life Safety and Property Protection Licensing & Registration Division
Certificate of Firm Registration

The below named firm is hereby certified by and registered with the Office of State Fire Marshal pursuant to L.R.S. 40:1664 ET SEQ. of Life Safety & Property Protection systems:

License Number:

F 2127

Endorsements:

CLOSED CIRCUIT TELEVISION

Firm Name:

CYPRESS MULTIMEDIA LLC

Doing Business As:

Mailing Address:

9015 EUREKA LANE

SHREVEPORT, LA 71115-

Physical Location:

9015 EUREKA LANE

SHREVEPORT, LA 71115-

This license must be placed in a conspicuous place at the firm's physical location.
This license is not transferable and may be revoked or suspended with cause.

This license was issued on 08/26/2015 and will expire on 08/01/2018.

State Fire Marshal – H “Butch” Browning



**Life Safety &
Property Protection License**

License Holder:
PATRICK R DAY

License Number:
E 17365

Expires On:
8/1/2016





Firm:
CYPRESS MULTIMEDIA
LLC

Firm Number:
F 2127

Firm Expiration:
8/1/2016

Issued by Louisiana State Fire Marshal

**Life Safety &
Property Protection License**

License Holder:
JAMES B FINLEY

License Number:
E 17354

Expires On:
8/1/2016





Firm:
CYPRESS MULTIMEDIA
LLC

Firm Number:
F 2127

Firm Expiration:
8/1/2016

Issued by Louisiana State Fire Marshal

**Life Safety &
Property Protection License**

License Holder:
JACKSON M RYLAND

License Number:
E 17356

Expires On:
8/1/2016





Firm:
CYPRESS MULTIMEDIA
LLC

Firm Number:
F 2127

Firm Expiration:
8/1/2016

Issued by Louisiana State Fire Marshal

**Life Safety &
Property Protection License**



License Holder:

JOHN M PETTY, JR

License Number:

E3815

Expires On:

9/1/2017



Firm:

TYCO INTEGRATED
SECURITY

Firm Number:

F523

Firm Expiration:

9/1/2017

Issued by Louisiana State Fire Marshal

**Life Safety &
Property Protection License**



License Holder:
JAMES L GRIMMETT, II

License Number:
E12948

Expires On:
9/1/2017



Firm:
TYCO INTEGRATED
SECURITY

Firm Number:
F523

Firm Expiration:
9/1/2017

Issued by Louisiana State Fire Marshal

Life Safety &
Property Protection License

License Holder:

WILLIAM F BUHRMAN, JR

License Number:

E36669

Expires On:

9/1/2017



Firm:

TYCO INTEGRATED
SECURITY

Firm Number:

F523

Firm Expiration:

9/1/2017

Issued by Louisiana State Fire Marshal

CYPRESS MULTIMEDIA, LLC

iii. Section 2: References

CYPRESS MULTIMEDIA, LLC

REFERENCES

Premier Products, Inc. 2840 Sterlington Road, Monroe, La 71203

Danny Gebhardt - Director - 318-361-0796

200,000 Square foot heavy industrial manufacturing facility that produces specialty doors. We installed a complete IP camera system and associated cat 6 ethernet network infrastructure. 64 channel network video recorder/server, mixture of over 30 2.1-5 Megapixel IP cameras.

Industrial Cutting Tools, LLC 904 Aero Drive, Shreveport, La 71107

Robert Elworthy - Director of IT - 229-219-2337

Multi-Building heavy industrial shop that repairs and services extremely large saw blades for sawmills around the country. We installed a complete IP camera system and associated cat 6 ethernet network infrastructure. 16 channel network video recorder and 2.1 Megapixel IP cameras.

Drug Emporium Grocery Store Chain 5819 East Kings Hwy, Shreveport, La 71105

George Harvison - General Manager - 318-861-7896

30,000 Square foot grocery store chain. We installed a 24 channel recorder/server along with 24 2.1 Megapixel cameras and related infrastructure.

City On A Hill Church 612 State Route 531 Minden, La 71055

John Crooks - Director of Security - 318-780-5770

45,000 Square Foot Church. We installed a complete IP camera system with associated cat 6 ethernet infrastructure. 32 channel recorder/server with 2.1 megapixel cameras inside and 4.1 megapixel cameras outside.

Community Bank of Louisiana - 10 locations in North Louisiana

Jayce Simpson - Senior Vice President - 318-872-3831

Community Bank is a direct client of ours for whom we provide alarm system and video surveillance installation, service and maintenance work for their 10 branches.

Cypress Multimedia, LLC is also the only direct subcontractor for NAVCO in North Louisiana. We are responsible for all installations, service and warranty work for close to 40 financial institutions in North Louisiana. We represent JPMorgan Chase, Iberia Bank and First Guaranty Bank.

CYPRESS MULTIMEDIA, LLC

iv. Section 3: Product Descriptions

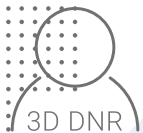
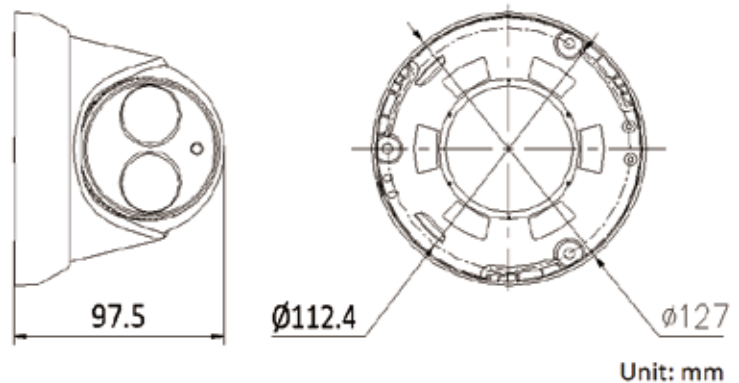
Platinum Matrix IR Turret Network IP Camera 5MP CMIP3052



Key Features:

- 5MP High Definition
- Digital WDR
- 3D DNR, BLC, Intelligent H.264 Zip+
- High performance Matrix IR LED
- IP66
- DC 12V/ PoE

Dimensions:



Platinum Matrix IR Turret Network IP Camera 5MP CMIP3052

CAMERA	
Image Sensor	1/3" Progressive Scan CMOS
Min. Illumination	0.01Lux @ (F1.2, AGC ON), 0 Lux with IR
Shutter Speed	1/3 s to 1/10,000 s
Lens	4mm
Lens Mount	M12
Day & Night	IR cut filter with auto switch
DNR	3D DNR
Wide Dynamic Range	DWDR
Angle Adjustment	Pan: 0° ~ 360°, Tilt: 0° ~ 75°, Rotation: 0° ~ 360°
Compression Standard	
Video Compression	H.264 / MJPEG/H.264 Zip+
H.264 Type	Main Profile
Video Bit Rate	256 Kbps ~ 16 Mbps
Dual streams	Support
Image	
Max. Resolution	2560×1920
Main Stream	60Hz: 20fps (2560×1920), 30fps (2048×1536), 30fps(1920×1080), 30fps(1280×720) 50Hz: 20fps (2560×1920), 25fps (2048×1536), 25fps(1920×1080), 25fps(1280×720)
Sub Stream	60Hz: 30fps (352×240, 640×480) 50Hz: 25fps (352×288, 640×480)
Others	Saturation, Brightness, Contrast adjustable by client software or web browser, Mirror, BLC, ROI, Dual Stream, Anti-Flicker, Privacy Mask,
Network	
Network Storage	NAS (Support NFS, SMB/CIFS), ANR
Alarm Trigger	Motion Detection, Tampering Alarm, Intrusion Detection, Line Crossing Detection, HDD Full, HDD Error, Network Disconnected, IP Address Conflicted
Protocols	TCP/IP, UDP, ICMP, HTTP, HTTPS, FTP, DHCP, DNS, DDNS, RTP, RTSP, RTCP, PPPoE, NTP, UPnP, SMTP, SNMP, IGMP, 802.1X, QoS, IPv6, Bonjour
General	Password Protection, IP Address Filtering, Anonymous Access, Watermark
Standard	ONVIF (PROFILE S, PROFILE G), PSIA, CGI, ISAPI
Interface	
Communication Interface	1 RJ45 10M/100M Ethernet port
Reset	Yes
General	
Working Temperature / Humidity	-22 °F ~ 140 °F (-30 °C ~ 60 °C) Humidity 95% or less (non-condensing)
Power Supply	DC12V ± 10%, PoE (802.3af)
Power Consumption	Max. 5.5W
IR Range	Approx. 100ft (30 meters)
Weather Proof Ratings	IP66
Dimensions	Φ5.0" × 3.8" (Φ127×97.5mm)
Weight	1.5 lbs (670g)



USA VISION SYSTEMS
Ultra Class Series
4U Rackmount NVR Server

CPU		Intel i7 Skylake
Memory (RAM)		16 GB DDR4
Hot Swap Bay		2/ 4/ 8/ 20
Video	Codec	MPEG4, MJPEG, H.264
	Input	32
Video Resolution		2560x1920 (5M), 2560x1600 (4M), 2048x1536 (3M), 1600x1200 (2M), 1280x960 (1.3M), 640x480 (VGA), 320x240 (CIF)
Backup Type		DVD±R, DVD±RW, CD-R/RW
Recovery DVD		Automatic System Rebuild
Alarm Inputs	Sensor Input	4*
	Alarm Output	4*
Connector	Ethernet	2 x RJ-45, 10/100/1000 Mbps
	VGA Output	2 (DVI, VGA, or HDMI)
	USB 2.0 (F + R)	2 Front + 4 Rear
	USB 3.0	2 Rear
Remote Access		TCP/IP, LAN, WAN, Internet, ISDN
Operating Temperature		0 to 45 °C (32 to 133 °F)
Humidity		0 to 80% RH (non condensing)
Dimensions (W x D x H)	2 and 20 Bays	19 x 26 x 7 inch
	4 and 8 Bays	19 x 21 x 7 inch
Raid (optional)		0, 1, 5, 6
Power Supply	2 Bays	380W
	4 and 8 Bays	
	20 Bays	1080W
Optional Products		GV-IO 12-In Card / GV-IO 12-Out Card / GV-IO Box 4 / GV-IO Box 8 / GV-IO Box 16 / GV-Data Capture Box Series / GV-Hub Box / GV-COM Box/ GV-DOM / GV-Joystick / GV-Remote / GV - Keyboard
Languages		English/ Spanish

UVS VMS SERVER

PRODUCT BROCHURE



DESIGNED AND MADE IN THE U.S.A.

EMBEDDED VIDEO ANALYTICS

WINDOWS EMBEDDED STANDARD 7 64-BIT OS

INTUITIVE DESIGN FOR EASY SET UP



WWW.USAVISIONSYS.COM

SOFTWARE

GV-VMS

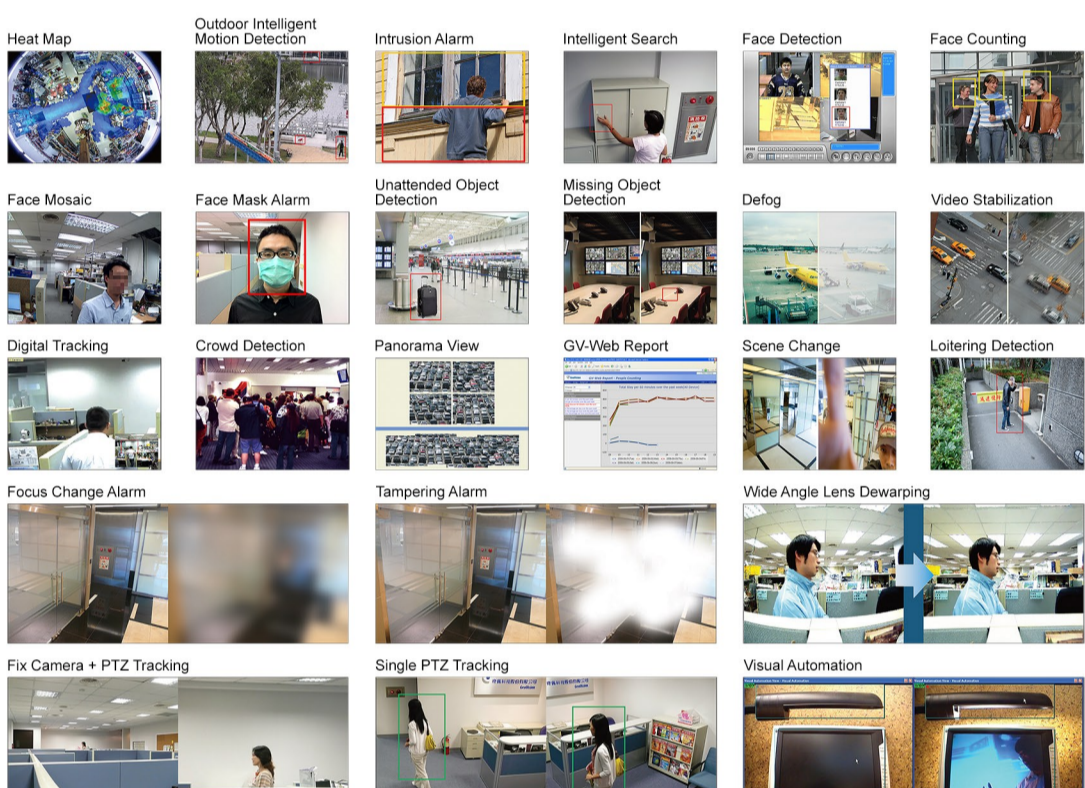


Whether you want to protect your home from intrusion or to manage a multi-location high security enterprise, GeoVision Video Management Software is the solution for you. Designed to be scalable and expandable for many years to come, GV-VMS offers a customizable surveillance solution for applications of any size or complexity and is fully compatible with GeoVision's comprehensive line of security products and features. GV-VMS also comes with a wide array of video analytics that enable efficient and effective surveillance under various conditions for any industry segment.

- View up to 64 IP channels
- Camera setting features for simple installs
- User-friendly interface layout
- 90/270° rotation corridor mode
- Detailed heat maps
- Support for e-mail notification upon events
- Customizable layout for live view and playback
- Service Mode
- GPU for decode and fisheye dewarp
- Dewarp fisheye video to multiple channels
- Timeline Playback with mouse over image
- Outdoor intelligent motion detection
- Support for multi-monitor display
- Picture-in-Picture and Focus View functions

VIDEO ANALYTICS

Transform standard surveillance networks into intelligent and effective monitoring systems that automatically detect, alert, and respond to user-defined events.



SYSTEM

CUBE SERIES

Compact size and low power consumption



- Up to 8 channels recommended
- Customizable CPU (i3, i5)
- 128GB SSD OS drive
- 1 storage hard drive (up to 4TB)
- 8GB RAM
- Dual-monitor display (choose 2 from VGA, DVI, HDMI)

CUBE HOTSWAP

Compact design with customizable capacity



- Supports up to 32 channels
- Customizable CPU (i3, i5, i7)
- 128GB SSD OS drive
- 4 hot-swappable drive bays (up to 32TB)
- Up to 16GB RAM
- Dual-monitor display (choose 2 from VGA, DVI, HDMI)

PROFESSIONAL SERIES

Hot-swappable drives for standard industry installs



- Supports up to 32 channels
- i5 CPU
- 128GB SSD OS drive
- 8 hot-swappable drive bays (up to 64TB)
- 16GB RAM
- Tri-monitor display (choose 3 from VGA, DVI, HDMI, DisplayPort)

ULTRA SERIES

Hot-swappable and designed exceptionally powerful for the most demanding projects



- Supports up to 64 channels
- i7 CPU
- 128GB SSD OS drive
- 2U 8 hot-swappable drive bays (up to 64TB)
- 16GB RAM
- Tri-monitor display (choose 3 from VGA, DVI, HDMI, DisplayPort)



- Supports up to 64 channels
- i7 CPU
- 128GB SSD OS drive
- 4U 4/8 hot-swappable drive bays (up to 64TB)
- 16GB RAM
- Tri-monitor display (choose 3 from VGA, DVI, HDMI, DisplayPort)



- Supports up to 64 channels
- i7 CPU
- 128GB SSD OS drive
- 4U 20 hot-swappable drive bays (up to 160TB)
- 16GB RAM
- Tri-monitor display (choose 3 from VGA, DVI, HDMI, DisplayPort)

CONTROL CENTER SERVER

Manage all security operations from a single location



- Supports unlimited channels
- i7 CPU
- 128GB SSD OS drive
- Supports up to 4 monitors
- 16GB RAM

RECORDING SERVER

Hot-swappable and powerful recording capacity



- Supports up to 128 channels
- i7 CPU
- 128GB SSD OS drive
- Up to 20 hot-swappable drive bays (up to 160TB)
- 16GB RAM

FAILOVER SERVER

Uninterrupted system access and data protection



- Supports up to 128 channels
- i7 CPU
- 128GB SSD OS drive
- 4U 8/20 hot-swappable drive bays (up to 160TB)
- 16GB RAM
- Tri-monitor display (choose 3 from VGA, DVI, HDMI, DisplayPort)

SYSTEM

SAN SYSTEM

iSCSI technology for high performance at low cost



- 4U 24 hot-swappable drive bays SATA II / III HDD (up to 144TB)
- 6x 1GbE iSCSI data ports
- Redundant and hot pluggable power supplies / fans
- Hardware iSCSI offload engine
- Background logical drive rebuilding
- Automatic rebuilding onto hot spare (local & global hot spare)
- Web management interface enabled on a specific Ethernet interface
- Multi-path and load-balancing features
- Storage expendable up to 1152 TB with 192 hard drives by connecting up to 7 GV-Expansion Systems (4U, 24-bay)

GV-EXPANSION SYSTEM

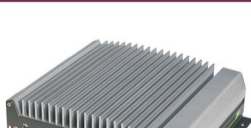
The ultimate hot-swappable storage system



- JBOD system
- 4U 24 hot-swappable drive bays SATA II / III HDD (up to 144TB)
- 2x 6Gbps SAS port
- Up to 7 sets of GV-Expansion System connection for expansion from GV-Storage System V2
- Redundant and hot pluggable power supplies / fans

MOBILE NVR

Rugged design for mobile & industrial environments



- Supports up to 16 channels
- i5 CPU
- 1 hot-swappable 2.5" HDD/SSD (up to 2TB)
- Fanless system
- Anti-vibration and mechanical shock protection (5G at 5-500 Hz, SSD)
- ACC signal support
- Wide operating temperature (32°F-158°F for SSD)
- Dual-monitor display (choose 2 from VGA, 2x DVI)

APPLICATION SERVERS

To meet the unique demands of large scale installations, GeoVision provides several application servers to facilitate video storage and redundancy. All servers can be customized, by request, to come with the purchased application pre-loaded.



SMARTPHONES & TABLETS



Smartphone and tablet-based apps are useful for controlling and monitoring surveillance solutions from anywhere. GeoVision mobile apps provide an easy way to view live videos and playback recording. For GeoVision IP devices and GV-VMS, use GV-Eye 2.1 to view on Android or iOS devices. GV-Eye 2.1 also supports dewarping for GV-Fisheye IP Cameras and multi-channel view. For GeoVision DVR / NVR, use GV-AView to view on Android and GV-iView to view on iOS.



WD Purple™

Surveillance Hard Drives

WD Purple™ drives are built for 24/7, always-on, high-definition security systems. With a supported workload rate* of up to 180 TB/yr and support for up to 64 cameras, WD Purple™ drives are optimized for surveillance systems. WD Purple™ surveillance storage also comes with WD's exclusive AllFrame 4K™ technology, so you can confidently create a security system tailored to the needs of your business. Using AllFrame 4K™ technology, WD Purple™ drives improve ATA streaming to help reduce errors, pixelation, and video interruptions that could happen in a video recorder system.



INTERFACE

SATA 6 Gb/s

FORM FACTOR

3.5-inch

PERFORMANCE CLASS

5400 RPM Class

CAPACITIES

500GB to 10TB

MODEL NUMBERS

WD100PURZ	WD30PURX
WD80PUZX	WD20PURX
WD60PURX	WD10PURX
WD50PURX	WD05PURX
WD40PURX	

Product Features

The right drive for the right job

WD Purple™ drives have been engineered specifically for surveillance, so they're able to withstand the extreme heat fluctuations and equipment vibrations within a NVR environment. An average desktop drive is built to run for only short intervals, not the harsh 24/7 always-on environment of a high-definition surveillance system. A disruption to a drive could result in a failure that impacts multiple users, your security archive, or even the entire system. With WD Purple™, you get reliable, surveillance-class storage that's tested for compatibility in a wide-range of security systems.

Industry-leading storage. Surveillance you can trust.

WD is a worldwide leader in the hard drive industry. With WD Purple™ surveillance storage, you have a drive engineered for high temperature, always-on surveillance systems so you can rely on quality video playback when you need it most. Whether you're protecting loved ones or monitoring your business, WD Purple™ offers performance you can trust.

Wide compatibility. Seamless integration.

WD Purple™ hard drives are built with compatibility in mind, so you can quickly and seamlessly add capacity to your surveillance system. With a wide range of industry-leading enclosures and chipsets supported, you're sure to find the DVR configuration that's right for you.**

**Not sure what drive is best for your system? Use our compatibility tool to find the perfect storage for your DVR or NVR.

Expand your view to 64

Each WD Purple™ drive is optimized to support up to 64 cameras. With so many options, you have the flexibility to upgrade or expand your security system in the future

Trust your view with AllFrame 4K™

Missed frames and lost footage could be a serious problem when video surveillance needs to be retrieved. All WD Purple™ drives are equipped with AllFrame 4K™ technology, which improves ATA streaming to help reduce frame loss, improve overall

video playback, and increase the number of hard drive bays supported within a NVR.

Features:

- Engineered specifically for surveillance security systems.
- Three times the workload rating of our desktop hard drives*.
- Tuned for write-intensive, low bit-rate, high stream-count applications typical to most surveillance applications.
- Prioritized write-operations for maximized surveillance performance.
- TLER & ATA streaming support.
- Support for more than eight bays.***

*Workload Rate is defined as the amount of user data transferred to or from the hard drive. Workload Rate is annualized (TB transferred X(8760 / recorded power-on hours)). Workload Rate will vary depending on your hardware and software components and configurations.

***For capacities 4TB and higher.

Less power. More efficient.

Low power consumption is a necessity in a high-temperature, always-on surveillance environment. With our exclusive IntelliSeek™ technology, WD Purple™ drives are able to calculate optimum seek speeds. This keeps power consumption low so ambient noise and vibrations are at a minimum.

Three year limited-warranty

As an industry-leading hard drive manufacturer, WD stands behind their surveillance storage solutions. With a 3-year limited warranty included with every WD Purple™ drive, you can rely on your surveillance system's data storage capabilities.

The WD Advantage

At WD, we put our products through extensive Functional Integrity Testing (F.I.T.™) prior to any product launch. This testing ensures our products consistently meet the high quality and reliability standards of the WD brand. WD also has a detailed Knowledge Base with more than 1,000 helpful articles as well as helpful software and utilities. Our customer support lines have long operational hours to ensure you get the help you need when you need it. Our toll-free customer support lines are here to help or you can access our WD Support site for additional details.



Specifications	10TB	8TB	6TB	5TB	4TB	3TB	2TB
Model number ¹	WD100PURZ	WD80PUZX	WD60PURX	WD50PURX	WD40PURX	WD30PURX	WD20PURX
Formatted capacity ²	10TB	8TB	6TB	5TB	4TB	3TB	2TB
Form factor	3.5-inch	3.5-inch	3.5-inch	3.5-inch	3.5-inch	3.5-inch	3.5-inch
Advanced Format (AF)	Yes	Yes	Yes	Yes	Yes	Yes	Yes
RoHS compliant ³	Yes	Yes	Yes	Yes	Yes	Yes	Yes
Performance							
Interface transfer rate (max) ² Buffer to host Host to/from drive (sustained)	6 Gb/s 210 MB/s	6 Gb/s 178 MB/s	6 Gb/s 175 MB/s	6 Gb/s 170 MB/s	6 Gb/s 150 MB/s	6 Gb/s 145 MB/s	6 Gb/s 145 MB/s
Cache (MB) ²	256	128	64	64	64	64	64
Performance Class	5400 RPM Class	5400 RPM Class	5400 RPM Class	5400 RPM Class	5400 RPM Class	5400 RPM Class	5400 RPM Class
Reliability/Data Integrity							
Load/unload cycles ⁴	300,000	300,000	300,000	300,000	300,000	300,000	300,000
Non-recoverable read errors per bits read	<1 in 10 ¹⁴	<1 in 10 ¹⁴	<1 in 10 ¹⁴	<1 in 10 ¹⁴	<1 in 10 ¹⁴	<1 in 10 ¹⁴	<1 in 10 ¹⁴
Limited warranty (years) ⁵	3	3	3	3	3	3	3
Power Management							
Average power requirements (W) Read/Write Idle Standby and Sleep	6.2 5.0 0.5	6.4 5.7 0.7	5.3 4.9 0.4	5.3 4.9 0.4	5.1 4.5 0.4	4.4 4.1 0.4	4.4 4.1 0.4
Environmental Specifications⁶							
Temperature (°C, on the base casting) Operating Non-operating	0 to 65 -40 to 70	0 to 65 -40 to 70	0 to 65 -40 to 70	0 to 65 -40 to 70	0 to 65 -40 to 70	0 to 65 -40 to 70	0 to 65 -40 to 70
Shock (Gs) Operating (2 ms, read/write) Operating (2 ms, read) Non-operating (2 ms)	30 65 250	30 65 250	30 65 250	30 65 250	30 65 250	30 65 250	30 65 250
Acoustics (dBA) ⁷ Idle Seek (average)	20 29	20 29	25 26	25 26	25 26	23 24	23 24
Physical Dimensions							
Height (in./mm, max)	1.028/26.1	1.028/26.1	1.028/26.1	1.028/26.1	1.028/26.1	1.028/26.1	1.028/26.1
Length (in./mm, max)	5.787/147	5.787/147	5.787/147	5.787/147	5.787/147	5.787/147	5.787/147
Width (in./mm, ± .01 in.)	4/101.6	4/101.6	4/101.6	4/101.6	4/101.6	4/101.6	4/101.6
Weight (lb/kg, ± 10%)	1.43/0.65	1.43/0.65	1.65/0.75	1.65/0.75	1.50/0.68	1.40/0.64	1.40/0.64

¹ Not all products may be available in all regions of the world.

² As used for storage capacity, one megabyte (MB) = one million bytes, one gigabyte (GB) = one billion bytes, and one terabyte (TB) = one trillion bytes. Total accessible capacity varies depending on operating environment. As used for buffer or cache, one megabyte (MB) = 1,048,576 bytes. As used for transfer rate or interface, megabyte per second (MB/s) = one million bytes per second, and gigabit per second (Gb/s) = one billion bits per second. Effective maximum SATA 6 Gb/s transfer rate calculated according to the Serial ATA specification published by the SATA-IO organization as of the date of this specification sheet. Visit www.sata-io.org for details.

³ WD hard drive products manufactured and sold worldwide after June 8, 2011, meet or exceed Restriction of Hazardous Substances (RoHS) compliance requirements as mandated by the RoHS Directive 2011/65/EU.

⁴ Controlled unload at ambient condition.

⁵ See <http://support.wd.com/warranty> for regional specific warranty details.

⁶ No non-recoverable errors during operating tests or after non-operating tests.

⁷ Sound power level.



WD Purple™

Specifications	1TB	500GB
Model number ¹	WD10PURX	WD05PURX
Formatted capacity ²	1TB	500GB
Form factor	3.5-inch	3.5-inch
Advanced Format (AF)	Yes	Yes
RoHS compliant ³	Yes	Yes
Performance		
Interface transfer rate (max) ²		
Buffer to host	6 Gb/s	6 Gb/s
Host to/from drive (sustained)	110 MB/s	110 MB/s
Cache (MB) ²	64	64
Performance Class	5400 RPM Class	5400 RPM Class
Reliability/Data Integrity		
Load/unload cycles ⁴	300,000	300,000
Non-recoverable read errors per bits read	<1 in 10 ¹⁴	<1 in 10 ¹⁴
Limited warranty (years) ⁵	3	3
Power Management		
Average power requirements (W)		
Read/Write	3.3	3.3
Idle	2.9	2.9
Standby and Sleep	0.4	0.4
Environmental Specifications⁶		
Temperature (°C, on the base casting)		
Operating	0 to 65	0 to 65
Non-operating	-40 to 70	-40 to 70
Shock (Gs)		
Operating (2 ms, read/write)	30	30
Operating (2 ms, read)	65	65
Non-operating (2 ms)	350	350
Acoustics (dBA) ⁷		
Idle	21	21
Seek (average)	22	22
Physical Dimensions		
Height (in./mm, max)	1.028/26.1	1.028/26.1
Length (in./mm, max)	5.787/147	5.787/147
Width (in./mm, ± .01 in.)	4/101.6	4/101.6
Weight (lb/kg, ± 10%)	0.99/0.45	0.99/0.45

¹ Not all products may be available in all regions of the world.

² As used for storage capacity, one megabyte (MB) = one million bytes, one gigabyte (GB) = one billion bytes, and one terabyte (TB) = one trillion bytes. Total accessible capacity varies depending on operating environment. As used for buffer or cache, one megabyte (MB) = 1,048,576 bytes. As used for transfer rate or interface, megabyte per second (MB/s) = one million bytes per second, and gigabit per second (Gb/s) = one billion bits per second. Effective maximum SATA 6 Gb/s transfer rate calculated according to the Serial ATA specification published by the SATA-IO organization as of the date of this specification sheet. Visit www.sata-io.org for details.

³ WD hard drive products manufactured and sold worldwide after June 8, 2011, meet or exceed Restriction of Hazardous Substances (RoHS) compliance requirements as mandated by the RoHS Directive 2011/65/EU.

⁴ Controlled unload at ambient condition.

⁵ See <http://support.wd.com/warranty> for regional specific warranty details.

⁶ No non-recoverable errors during operating tests or after non-operating tests.

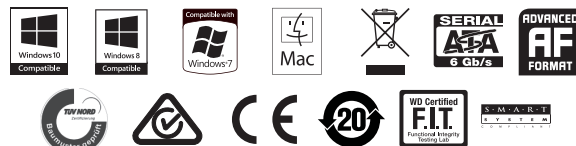
⁷ Sound power level.

Western Digital
3355 Michelson Drive, Suite 100
Irvine, California 92612
U.S.A.

For service and literature:

<http://support.wd.com>
www.wd.com

800.ASK.4WDC North America
(800.275.4932)
800.832.4778 Spanish
+86.21.2603.7560 Asia Pacific
00800.27549338 Europe
(toll free where available)
+31.880062100 Europe/Middle East/
Africa



CAN ICES-3 (B) / NMB-3 (B)

WD, the WD logo, AllFrame 4K, IntelliSeek, FIT Lab, and WD Purple are registered trademarks or trademarks of Western Digital Corporation or its affiliates in the US and/or other countries. All other marks are the property of their respective owners. Product specifications subject to change without notice. Picture shown may vary from actual product. Not all products are available in all regions of the world.

© 2017 Western Digital Corporation or its affiliates. All rights reserved.

2879-800012-A06 Mar 2017

CYPRESS MULTIMEDIA, LLC

v. Section 4: Product Warranty Information



Video Solutions for Security Professionals™

Warranty Services

No limited warranty is provided by LTSecurity unless your LTSecurity Product ("Product") was purchased from an authorized distributor or authorized reseller. Distributors may sell Products to resellers who then sell Products to end users. Please see below for warranty information or obtaining service. No warranty service is provided unless the Product is returned to an authorized return center in the region where the Product was first shipped by LTSecurity, which may have regional specific warranty implications.

If your Product was purchased as a component integrated within a system by a system manufacturer, no limited warranty is provided by LTSecurity. Please contact the place of purchase or the system manufacturer directly for warranty service.

Please refer to the following warranty tables for basic product warranty information. Depending on the type of sales transaction, product warranty may differ from the general warranty information listed below.

Product	Warranty
Analog Cameras, IP Cameras	1 Year
PoE Switches, PoE Injectors, PoE Repeaters, DVR/NVRs	2 Years
Platinum NVRs and IP Cameras	3 Years

The term of your limited warranty period shall commence on the purchase date appearing on your purchase receipt from an authorized distributor or authorized reseller and extends only for the period of time set forth in the Product documentation.

Proof of purchase shall be required to be eligible for this warranty and to establish the commencement date of this warranty. In the United States, some states do not allow limitations on how long implied warranties last, so the above limitation may not apply to you.

Please refer to your Product manual for a statement of your limited warranty.

THERE ARE NO WARRANTIES WHICH EXTEND BEYOND THE FACE OF THE LTSECURITY LIMITED WARRANTY. LTSECURITY DISCLAIMS ALL OTHER WARRANTIES, EXPRESS OR IMPLIED, REGARDING THE PRODUCTS, INCLUDING ANY IMPLIED WARRANTIES OF MERCHANTABILITY, FITNESS FOR A PARTICULAR PURPOSE OR NONINFRINGEMENT. IN THE UNITED STATES, SOME STATES DO NOT ALLOW THE EXCLUSION OF THE IMPLIED WARRANTIES, SO THE ABOVE EXCLUSION MAY NOT APPLY TO YOU.

Recertified Products

LTSecurity recertified products may consist of customer return units and may be repaired. All products are tested and determined to meet LTSecurity's stringent quality standards before they are sold as recertified. Please note that some recertified items may have marks, scratches, or other slight signs of wear.

All recertified products carry manufacturer's limited warranty of 3 months.

Return Material Authorization (RMA)

No Product may be returned directly to LTSecurity without first contacting LTSecurity for a Return Material Authorization ("RMA") number. If it is determined that the Product may be defective, you will be given an RMA number and instructions for Product return. An unauthorized return, i.e. one for which an RMA number has not been issued, will be returned to you at your expense. Authorized returns are to be shipped prepaid and insured to the address on the RMA in an approved shipping container. Your original box and packaging materials should be kept for storing or shipping your Product. If upon inspection of your returned Product LTSecurity suspects fraud or deems such Product to be counterfeit, LTSecurity may, in its sole discretion, confiscate such Product or take such other actions as it deems necessary. To request an RMA, please call 630-348-8088.

Warranty Limitations

LTSecurity's limited warranty provides that, subject to the following limitations, each Product will be free from defects in material and workmanship and will conform to LTSecurity's specification for the particular Product.

Limitation of Remedies

YOUR EXCLUSIVE REMEDY FOR ANY DEFECTIVE PRODUCT IS LIMITED TO THE REPAIR OR REPLACEMENT OF THE DEFECTIVE PRODUCT.

LTSecurity may elect which remedy or combination of remedies to provide in its sole discretion. LTSecurity shall have a reasonable time after determining that a defective Product exists to repair or replace a defective Product. LTSecurity's replacement Product under its limited warranty will be manufactured from new and serviceable used parts. LTSecurity's warranty applies to repaired or replaced Products for the balance of the applicable period of the original warranty.

Limitation of Damages

LTSECURITY'S ENTIRE LIABILITY FOR ANY DEFECTIVE PRODUCT SHALL IN NO EVENT EXCEED THE PURCHASE PRICE FOR THE DEFECTIVE PRODUCT. THIS LIMITATION APPLIES EVEN IF LTSECURITY

CANNOT OR DOES NOT REPAIR OR REPLACE ANY DEFECTIVE PRODUCT AND YOUR EXCLUSIVE REMEDY FAILS OF ITS ESSENTIAL PURPOSE.

No Consequential or Other Damages

NOTWITHSTANDING ANYTHING ELSE IN THIS POLICY OR OTHERWISE, LTSECURITY WILL NOT BE LIABLE WITH RESPECT TO THE PRODUCTS UNDER ANY CONTRACT, NEGLIGENCE, STRICT LIABILITY OR OTHER LEGAL OR EQUITABLE THEORY (I) FOR ANY AMOUNT IN EXCESS OF THE PURCHASE PRICE FOR THE DEFECTIVE PRODUCT OR (II) FOR ANY GENERAL, CONSEQUENTIAL, PUNITIVE, INCIDENTAL OR SPECIAL DAMAGES. THESE INCLUDE LOSS OF RECORDED DATA, INTERRUPTION OF USE, THE COST OF RECOVERY OF LOST DATA, LOST PROFITS AND THE COST OF THE INSTALLATION OR REMOVAL OF ANY PRODUCTS, THE INSTALLATION OF REPLACEMENT PRODUCTS, AND ANY INSPECTION, TESTING, OR REDESIGN CAUSED BY ANY DEFECT OR BY THE REPAIR OR REPLACEMENT OF PRODUCTS ARISING FROM A DEFECT IN ANY PRODUCT. THIS SECTION DOES NOT LIMIT LIABILITY FOR BODILY INJURY OF A PERSON.

IN THE UNITED STATES, SOME STATES DO NOT ALLOW EXCLUSION OR LIMITATION OF INCIDENTAL OR CONSEQUENTIAL DAMAGES, SO THE LIMITATIONS ABOVE MAY NOT APPLY TO YOU. THIS WARRANTY GIVES YOU SPECIFIC LEGAL RIGHTS, AND YOU MAY ALSO HAVE OTHER RIGHTS WHICH VARY FROM STATE TO STATE.

Your Use of the Product

LTSecurity will have no liability for any Product returned if LTSecurity determines that:

- The product was stolen from LTSecurity.
- The asserted defect:
 - Is not present,
 - Cannot reasonably be fixed because of damage occurring when the Product is in the possession of someone other than LTSecurity, or
 - Is attributable to misuse, improper installation, alteration (including removing or obliterating labels and opening or removing external covers (unless authorized to do so by LTSecurity or an authorized Service Center)), accident or mishandling while in the possession of someone other than LTSecurity.
- The Product was not sold to you as new.
- The product was not used in accordance with LTSecurity specifications and instructions.
- The product was not used for its intended function (for example, desktop drives used in an Enterprise environment).

Additional Limitations on Warranty

LTSecurity's warranty does not cover Products which have been received improperly packaged, altered, or physically damaged. Products will be inspected upon receipt.

WARRANTY

Warranty | Warranty Table

GeoVision, Inc. ("GeoVision") provides types of Limited Warranty for products. Please see Limited Warranty Table on main page of official website (www.geovision.com.tw) for detail information.

All aforementioned products, EXCLUDE ALL SOFTWARE AND SOME PACKAGED ACCESSORIES LISTED IN LIMITED WARRANTY TABLE, (hereinafter called "Products" will be free from defects in materials/workmanship during the terms of these Limited Warranties ("Limited Warranties") from the date of purchase. These Limited Warranties parts and labor warranty of GeoVision are applicable to Products purchased via authorized distribution and sales channels.

If a defect arises and a valid claim is received by GeoVision within Limited Warranties Period, at its option, GeoVision will (1) repair Products at no charge, using new or refurbished replacement parts, or (2) exchange Products with a Product that is new or which has been manufactured from new or serviceable used parts and is at least functionally equivalent to the original Products.

GeoVision warrants replacement parts or repairs for thirty (30) days from the date of GeoVision shipment or for the remainder of Limited Warranties Period, whichever provides longer coverage for you. When a Product or part is exchanged, any replacement item becomes your property and the replaced item becomes GeoVision's property.

It is customer's sole responsibility and requirement to prove these Products are under warranty (by submit your sales invoice and bar code), otherwise GeoVision will determine these Products' warranties period at its option. GeoVision reserves the right, at its sole discretion and any time, to modify and adjust the scope and content of Products and its warranty without prior notice, however, any modification and adjustment thereafter will not affect or interrupt any rights belonging to Products you purchased already.

LIMITATIONS OF WARRANTIES

Limited Warranties apply only to Products manufactured by or for GeoVision that can be identified by the "GeoVision" trademark, trade name, or logo affixed to them. Limited Warranties do not apply to any non-GeoVision products including counterfeited products. GeoVision is not liable for any damage to or loss of any profit, programs, data, labor cost, or other

information stored on any media, device, or any non-GeoVision products or part not covered by these warranties. Recovery and reinstallation of system and application software and user data are not covered under Limited Warranties. Limited Warranties do not apply if:

Products have been subjected to abnormal use, improper storage, unauthorized modifications, unauthorized repair, misuse, neglect, abuse, accident, alternation, removal of any stickers or labels on the hardware, improper hardware/software installations including fail to comply install note of user manual in part or in whole, or other acts that are not the faults of GeoVision, including damage caused by shipping;

Products have been damaged from exposure under circumstances which is over weatherproof specification of the product, an Act of God, or improper use of any electrical source, or the connection to other products not recommended for interconnection by GeoVision;

Products have defects or damage caused due to computer virus attack, hack, internet or technical issues;

Products serial number have been removed, defaced or altered;

Products have been sold by an unauthorized distributor or retailer.

The GV system case has been opened.

Products have been interoperated with any non-GeoVision products which GeoVision does not approve the compatibility.

DISCLAIMER OF WARRANTIES

EXCEPT AS SPECIFIED IN THESE WARRANTIES, ALL EXPRESS OR IMPLIED CONDITIONS, REPRESENTATIONS, AND WARRANTIES INCLUDING, WITHOUT LIMITATION, ANY IMPLIED WARRANTIES OR CONDITION OF MERCHANTABILITY, FITNESS FOR A PARTICULAR PURPOSE,

NON-INFRINGEMENT, SATISFACTORY QUALITY, NON-INTERFERENCE, ACCURACY OF INFORMATIONAL CONTENT, OR ARISING FROM A COURSE OF DEALING, LAW, OR TRADE PRACTICE, ARE HEREBY EXCLUDED TO THE EXTENT ALLOWED BY APPLICABLE LAW AND ARE EXPRESSLY DISCLAIMED BY GEOVISION. TO THE EXTENT IMPLIED WARRANTIES CANNOT BE EXCLUDED, SUCH WARRANTIES ARE LIMITED IN DURATION TO THE EXPRESS WARRANTIES PERIOD. BECAUSE SOME STATES OR JURISDICTIONS DO NOT ALLOW LIMITATIONS ON HOW LONG IMPLIED WARRANTIES LASTS, THE ABOVE LIMITATION MAY NOT APPLY. THESE WARRANTIES GIVE CUSTOMERS SPECIFIC LEGAL RIGHTS, AND CUSTOMER MAY ALSO HAVE OTHER RIGHTS WHICH VARY FROM JURISDICTION TO JURISDICTION. THIS DISCLAIMER AND EXCLUSION SHALL APPLY EVEN IF THE EXPRESS WARRANTIES SET FORTH ABOVE FAILS OF ITS ESSENTIAL PURPOSE.

GEOVISION MAKES NO WARRANTIES AND LIABILITIES, EXPRESS OR IMPLIED, WITH RESPECT TO NON-GEOVISION PRODUCTS OR THEIR INTEROPERATION WITH THE PRODUCTS AND DISCLAIM ANY IMPLIED WARRANTIES OF MERCHANTABILITY, COMPATIBILITY, FITNESS FOR A PARTICULAR USE, OR INTEROPERATION BETWEEN PRODUCTS AND NON-GEOVISION PRODUCTS. GEOVISION SHALL NOT BE LIABLE FOR INCLUDING BUT NOT LIMITED TO ANY DATA LOST, LOSS AND DAMAGE, LABOR/EMPLOYEE COST, DIRECT OR INDIRECT, FOR ANY

INTEROPERATION BETWEEN THE PRODUCTS AND NON-GEOVISION PRODUCTS.

LIMITATION OF LIABILITY

REGARDLESS WHETHER ANY REMEDY SET FORTH HEREIN FAILS OF ITS ESSENTIAL PURPOSE OR OTHERWISE, IN NO EVENT WILL GEOVISION OR ITS SUPPLIERS BE LIABLE FOR ANY LOST REVENUE, PROFIT OR LOST OR DAMAGED DATA, BUSINESS INTERRUPTION, LOSS OF CAPITAL, LABOR/EMPLOYEE COST, OR FOR SPECIAL, INDIRECT, CONSEQUENTIAL, INCIDENTAL, OR PUNITIVE DAMAGES HOWEVER CAUSED AND REGARDLESS OF THE THEORY OF LIABILITY OR WHETHER ARISING OUT OF THE USE OR INABILITY TO USE THE GEOVISION PRODUCTS OR OTHERWISE AND EVEN IF GEOVISION HAS BEEN ADVISED OF THE POSSIBILITY OF SUCH DAMAGES. IN NO EVENT SHALL GEOVISION'S LIABILITY TO CUSTOMER, WHETHER IN CONTRACT, TORT (INCLUDING NEGLIGENCE), BREACH OF WARRANTY, OR OTHERWISE, EXCEED THE PRICE PAID BY CUSTOMER FOR THE SOFTWARE THAT GAVE RISE TO THE CLAIM OR IF THE SOFTWARE IS PART OF ANOTHER PRODUCTS, THE PRICE PAID FOR SUCH OTHER PRODUCTS. BECAUSE SOME STATES OR JURISDICTIONS DO NOT ALLOW LIMITATION OR EXCLUSION OF CONSEQUENTIAL OR INCIDENTAL DAMAGES, THE ABOVE LIMITATION MAY

NOT APPLY TO YOU. IN NO EVENT SHALL GEOVISION'S TOTAL LIABILITY TO YOU FOR ALL DAMAGES (OTHER THAN AS MAY BE REQUIRED BY APPLICABLE LAW IN CASES INVOLVING PERSONAL INJURY) EXCEED THE AMOUNT OF TWO HUNDRED DOLLARS (U.S. \$200.00). THE FOREGOING LIMITATIONS WILL APPLY EVEN IF THE ABOVE STATED REMEDY FAILS OF ITS ESSENTIAL PURPOSE. CUSTOMER AGREES THAT THE LIMITATIONS OF LIABILITY AND DISCLAIMERS SET FORTH HEREIN WILL APPLY REGARDLESS OF WHETHER CUSTOMER HAS ACCEPTED ANY OTHER PRODUCTS OR SERVICE DELIVERED BY GEOVISION. CUSTOMER ACKNOWLEDGES AND AGREES THAT GEOVISION HAS SET ITS PRICES IN RELIANCE UPON THE DISCLAIMERS OF WARRANTIES AND THE LIMITATIONS OF LIABILITY SET FORTH HEREIN, THAT THE SAME REFLECT AN ALLOCATION OF RISK BETWEEN THE PARTIES, AND THAT THE SAME FORM AN ESSENTIAL BASIS OF THE BARGAIN BETWEEN THE PARTIES. THESE WARRANTIES SHALL BE GOVERNED BY AND CONSTRUED IN ACCORDANCE WITH THE LAWS OF TAIWAN, REPUBLIC OF CHINA AND UNITED STATE, WITHOUT REFERENCE TO OR APPLICATION OF CHOICE OF LAW RULES OR PRINCIPLES. THE UNITED NATIONS CONVENTION ON THE INTERNATIONAL SALE OF GOODS SHALL NOT APPLY. IF ANY PORTION HEREOF IS FOUND TO BE VOID OR UNENFORCEABLE, THE REMAINING PROVISIONS SHALL REMAIN IN FULL FORCE AND EFFECT.

CYPRESS MULTIMEDIA, LLC

vi. Section 5: Timeline for deployment

CYPRESS MULTIMEDIA, LLC

TIMELINE FOR INSTALLATION

Installation could begin in the middle to end of June. We would like to see the work done in three phases with all school completing phase 1 before moving forward.

Phase 1: Installation of structured wiring. We foresee this taking 2 days for each school except STEM and Livonia HS which we anticipate 3.5 days each.

Phase 2: Terminating cabling and mounting cameras. We foresee this taking 1.5-2.5 days per school.

Phase 3: Server Installation, setup, aiming of cameras and final adjustments. We foresee this taking 1.5-2 days per school.

Installation of conduit will add approximately 3-4 days per school. Removal of old equipment will take 1.5-2 days per school.

If at all possible we would love to work Saturday and Sunday when I can double the size of my crew by hiring several licensed security contractors from Tyco Integrated Security out of Lafayette. This would allow us to cut our installation time more than half.

CYPRESS MULTIMEDIA, LLC

vii. Section 6: Financial Proposal / Detailed quotes



INVOICE

LIV-0001

Cypress Multimedia, LLC
9015 Eureka Lane
Shreveport, LA 71115
318-261-8088

Date: May 17, 2017

Balance Due: \$44,456⁵⁰

Bill To:

Livonia HS

Item	Quantity	Rate	Amount
Geovision UVS-NVR-I7U20-64A 64 Channel Recording Server Intel i7 Haswell 16GB DDR3 20 Bay Hotswap	1	\$4,945	\$4,945
Geovision 72-PS500-R8P Redundant Power Supply	1	\$874	\$874
Geovision 72-RAID20-001 20 Port RAID Card	1	\$2,070	\$2,070
Western Digital DHWD80PURX 8 Terabyte Western Digital Purple Surveillance Grade Hard Drive	20	\$285	\$5,700
LT Security LTCIMP3052 5 Megapixel High Definition 2560x1920P@12fps Matrix Infrared	45	\$185 ⁵⁰	\$8,347 ⁵⁰
LT Security LTB307 Turret Camera Junction Box	10	\$12	\$120
LT Security LTB301 Turret Camera Wall Mount Bracket	35	\$20	\$700
Geovision GV-LTCIP-NR001 Software License Fee Per Camera	45	\$35	\$1,575
Category 6 Ethernet Cabling Plenum/Non Plenum (where available)	1	\$1,875	\$1,875
All Labor, Setup, Installation & Installation Materials	1	\$18,250	\$18,250
3 Year Warranty on All Equipment & 1 Year Warranty on Workmanship	1	\$0	\$0

Total: \$44,456⁵⁰

Notes:

Recording is quoted at 30 days continuous @ 12fps. Motion only recording will be roughly half of the hard drive cost.



INVOICE

ROS-1

Cypress Multimedia, LLC
9015 Eureka Lane
Shreveport, LA 71115
318-261-8088

Date: May 17, 2017

Balance Due: \$33,434

Bill To:

Rosenwald Elementary

Item	Quantity	Rate	Amount
Geovision UVS-NVR-I7U20-64A 64 Channel Recording Server Intel i7 Haswell 16GB DDR3 20 Bay Hotswap	1	\$4,945	\$4,945
Geovision 72-PS500-R8P Redundant Power Supply	1	\$874	\$874
Geovision 72-RAID20-001 20 Port RAID Card	1	\$2,070	\$2,070
Western Digital DHWD80PURX 8 Terabyte Western Digital Purple Surveillance Grade Hard Drive	15	\$285	\$4,275
LT Security LTCIMP3052 5 Megapixel High Definition 2560x1920P@12fps Matrix Infrared	36	\$185 ⁵⁰	\$6,678
LT Security LTB307 Turret Camera Junction Box	11	\$12	\$132
LT Security LTB301 Turret Camera Wall Mount Bracket	25	\$20	\$500
Geovision GV-LTCIP-NR001 Software License Fee Per Camera	36	\$35	\$1,260
Category 6 Ethernet Cabling Plenum/Non Plenum (where available)	1	\$1,200	\$1,200
All Labor, Setup, Installation & Installation Materials	1	\$11,500	\$11,500
3 Year Warranty on All Equipment & 1 Year Warranty on Workmanship	1	\$0	\$0

Total: \$33,434

Notes:

Recording is quoted at 30 days continuous @ 12fps. Motion only recording will be roughly half of the hard drive cost.



INVOICE

ROU-0001

Cypress Multimedia, LLC

9015 Eureka Lane
Shreveport, LA 71115
318-261-8088

Date: May 17, 2017

Balance Due: \$29,923⁵⁰

Bill To:

Rougon

Item	Quantity	Rate	Amount
Geovision UVS-NVR-I7U20-64A 64 Channel Recording Server Intel i7 Haswell 16GB DDR3 20 Bay Hotswap	1	\$4,945	\$4,945
Geovision 72-PS500-R8P Redundant Power Supply	1	\$874	\$874
Geovision 72-RAID20-001 20 Port RAID Card	1	\$2,070	\$2,070
Western Digital DHWD80PURX 8 Terabyte Western Digital Purple Surveillance Grade Hard Drive	14	\$285	\$3,990
LT Security LTCIMP3052 5 Megapixel High Definition 2560x1920P@12fps Matrix Infrared	31	\$185 ⁵⁰	\$5,750 ⁵⁰
LT Security LTB307 Turret Camera Junction Box	17	\$12	\$204
LT Security LTB301 Turret Camera Wall Mount Bracket	14	\$20	\$280
Geovision GV-LTCIP-NR001 Software License Fee Per Camera	31	\$35	\$1,085
Category 6 Ethernet Cabling Plenum/Non Plenum (where available)	1	\$1,225	\$1,225
All Labor, Setup, Installation & Installation Materials	1	\$9,500	\$9,500
3 Year Warranty on All Equipment & 1 Year Warranty on Workmanship	1	\$0	\$0

Total: \$29,923⁵⁰

Notes:

Recording is quoted at 30 days continuous @ 12fps. Motion only recording will be roughly half of the hard drive cost.



INVOICE

STEM-0001

Cypress Multimedia, LLC
9015 Eureka Lane
Shreveport, LA 71115
318-261-8088

Date: May 17, 2017

Balance Due: \$41,752⁵⁰

Bill To:

Stem Magnet Academy

Item	Quantity	Rate	Amount
Geovision UVS-NVR-I7U20-64A 64 Channel Recording Server Intel i7 Haswell 16GB DDR3 20 Bay Hotswap	1	\$4,945	\$4,945
Geovision 72-PS500-R8P Redundant Power Supply	1	\$874	\$874
Geovision 72-RAID20-001 20 Port RAID Card	1	\$2,070	\$2,070
Western Digital DHWD80PURX 8 Terabyte Western Digital Purple Surveillance Grade Hard Drive	20	\$285	\$5,700
LT Security LTCIMP3052 5 Megapixel High Definition 2560x1920P@12fps Matrix Infrared	47	\$185 ⁵⁰	\$8,718 ⁵⁰
LT Security LTB307 Turret Camera Junction Box	30	\$12	\$360
LT Security LTB301 Turret Camera Wall Mount Bracket	17	\$20	\$340
Geovision GV-LTCIP-NR001 Software License Fee Per Camera	47	\$35	\$1,645
Category 6 Ethernet Cabling Plenum/Non Plenum (where available)	1	\$2,600	\$2,600
All Labor, Setup, Installation & Installation Materials	1	\$14,500	\$14,500
3 Year Warranty on All Equipment & 1 Year Warranty on Workmanship	1	\$0	\$0

Total: \$41,752⁵⁰

Notes:

Recording is quoted at 30 days continuous @ 12fps. Motion only recording will be roughly half of the hard drive cost.



INVOICE

UPPER-0001

Cypress Multimedia, LLC
9015 Eureka Lane
Shreveport, LA 71115
318-261-8088

Date: May 17, 2017

Balance Due: \$ 30,932⁵⁰

Bill To:

Upper Pointe Coupee

Item	Quantity	Rate	Amount
Geovision UVS-NVR-I7U20-64A 64 Channel Recording Server Intel i7 Haswell 16GB DDR3 20 Bay Hotswap	1	\$ 4,945	\$ 4,945
Geovision 72-PS500-R8P Redundant Power Supply	1	\$ 874	\$ 874
Geovision 72-RAID20-001 20 Port RAID Card	1	\$ 2,070	\$ 2,070
Western Digital DHWD80PURX 8 Terabyte Western Digital Purple Surveillance Grade Hard Drive	13	\$ 285	\$ 3,705
LT Security LTCIMP3052 5 Megapixel High Definition 2560x1920P@12fps Matrix Infrared	29	\$ 185 ⁵⁰	\$ 5,379 ⁵⁰
LT Security LTB307 Turret Camera Junction Box	17	\$ 12	\$ 204
LT Security LTB301 Turret Camera Wall Mount Bracket	12	\$ 20	\$ 240
Geovision GV-LTCIP-NR001 Software License Fee Per Camera	29	\$ 35	\$ 1,015
Category 6 Ethernet Cabling Plenum/Non Plenum (where available)	1	\$ 1,000	\$ 1,000
All Labor, Setup, Installation & Installation Materials	1	\$ 11,500	\$ 11,500
3 Year Warranty on All Equipment & 1 Year Warranty on Workmanship	1	\$ 0	\$ 0

Total: \$30,932⁵⁰

Notes:

Recording is quoted at 30 days continuous @ 12fps. Motion only recording will be roughly half of the hard drive cost.



INVOICE

VAL-0001

Cypress Multimedia, LLC

9015 Eureka Lane
Shreveport, LA 71115
318-261-8088

Date: May 17, 2017

Balance Due: \$35,644⁵⁰

Bill To:

Valverda

Item	Quantity	Rate	Amount
Geovision UVS-NVR-I7U20-64A 64 Channel Recording Server Intel i7 Haswell 16GB DDR3 20 Bay Hotswap	1	\$4,945	\$4,945
Geovision 72-PS500-R8P Redundant Power Supply	1	\$874	\$874
Geovision 72-RAID20-001 20 Port RAID Card	1	\$2,070	\$2,070
Western Digital DHWD80PURX 8 Terabyte Western Digital Purple Surveillance Grade Hard Drive	14	\$285	\$3,990
LT Security LTCIMP3052 5 Megapixel High Definition 2560x1920P@12fps Matrix Infrared	31	\$185 ⁵⁰	\$5,750 ⁵⁰
LT Security LTB307 Turret Camera Junction Box	5	\$12	\$60
LT Security LTB301 Turret Camera Wall Mount Bracket	26	\$20	\$520
Geovision GV-LTCIP-NR001 Software License Fee Per Camera	31	\$35	\$1,085
Category 6 Ethernet Cabling Plenum/Non Plenum (where available)	1	\$1,850	\$1,850
All Labor, Setup, Installation & Installation Materials	1	\$14,500	\$14,500
3 Year Warranty on All Equipment & 1 Year Warranty on Workmanship	1	\$0	\$0

Total: \$35,644⁵⁰

Notes:

Recording is quoted at 30 days continuous @ 12fps. Motion only recording will be roughly half of the hard drive cost.



INVOICE

CONDUIT-0001

Cypress Multimedia, LLC

9015 Eureka Lane
Shreveport, LA 71115
318-261-8088

Date: May 17, 2017

Balance Due: \$59,000

Bill To:

Conduit Materials & Installation

Item	Quantity	Rate	Amount
Rosenwald Conduit Material	1	\$3,500	\$3,500
Rosenwald Conduit Labor	1	\$5,000	\$5,000
Rosenwald Removal of old equipment	1	\$2,500	\$2,500
STEM Removal of old equipment	1	\$3,000	\$3,000
Upper Pointe Coupee Conduit Material	1	\$2,750	\$2,750
Upper Pointe Conduit Installation	1	\$4,500	\$4,500
Upper Pointe Removal of Old Equipment	1	\$2,500	\$2,500
Valverda Elementary Conduit Material	1	\$3,500	\$3,500
Valverda Elementary Conduit Installation	1	\$5,000	\$5,000
Valverda Removal of Old Equipment	1	\$2,500	\$2,500
Livonia High School Conduit Material	1	\$4,000	\$4,000
Livonia High School Conduit Installation	1	\$7,500	\$7,500
Livonia High School Removal of Old Equipment	1	\$3,750	\$3,750
Rougon Elementary School Conduit Material	1	\$2,500	\$2,500
Rougon Elementary Conduit Installation	1	\$4,000	\$4,000
Rougon Elementary Removal of Old Equipment	1	\$2,500	\$2,500

Total: \$59,000

CYPRESS MULTIMEDIA, LLC

viii. Section 7: Additional Bid Information

CYPRESS MULTIMEDIA, LLC

IMPORTANT BID NOTES

SECURITY CAMERAS: *Per bid specifications 1. The camera must have a motorized lens. 2. Support memory expansion by providing available card sd/sdhc. 3. Support 1-30 frames per second in all resolution.* We have quoted 5 megapixel Turret fixed lens cameras. We have quoted these for several reasons one being price and other being a design flaw for humid climates. The turret camera that we have quoted is LT Security LTCMIP3052 \$185.50 each. The equivalent motorized varifocal dome camera per spec is LT Security LTCMIP-7253SW \$365 each. The turret camera that we have quoted is far superior to any glass dome camera. Turret cameras have their lens and Infrared sensor on the exterior of the camera and they are separated. The dome camera has both the lens and infrared inside of a housing. In humid climates water molecules will get inside the glass domes and render nighttime viewing nearly impossible. The IR will reflect off the water molecules and the glass housing causing a horrible ghosting problem at night. In years to come water will inevitably become an issue as the weather stripping deteriorates causing your cameras to be worthless. Lastly, the issue of costly maintenance arises because the glass domes both inside and outside will need to be regularly cleaned. Turret cameras have absolutely none of the problems. The lens and the IR are separate, they are completely sealed and have no housing to clean. We solely install only turret cameras for our clients as they are the only cameras that we trust our reputation on.

Secondly, We believe that utilizing 5 megapixel cameras with a vast majority being inside hallways motorized varifocal cameras are not viable at all. During our walkthrough in every camera location I would want the absolute widest angle view. If half of the cameras needed to look at something several hundred yards away I would go varifocal but not for cameras that are for close proximity viewing. In my opinion spending an additional \$179.50 per camera or almost \$40,000 for a feature you do not need would be a waste.

NETWORK VIDEO SERVER: *Per bid specifications the recorder should have 100 channels of recording.* We do not know of a server currently on the market that can handle 100 plus channel in a single server. We have quoted a 64 channel server at each school. If you require 100 channels you can use a second 64 channel server and the price is itemized on the quotes. Of course in order to make these usable you would need to purchase additional licensing for the cameras and additional hard drives.

HARD DRIVES: *Per bid specifications/prebid meeting storage capacity needs to be large enough to support full 5 Megapixel resolution at 12 frames per second for 30 days continuously. We have priced into our bid this EXACT spec. If you should only require motion based recording the cost of the hard drives can nearly be cut in half.*

WARRANTY: *Per bid specification all equipment must have a 3 year warranty. All equipment quoted in this bid has a 3 year manufacturer's warranty with the exception of the server. Cypress Multimedia, LLC will cover the final year of warranty for the servers. Geovision makes the absolute best server in the industry, however, only warranties 2 years. We have made arrangements with entities in the past to warranty the final year to make a total of three years. The arrangements have included entities holding back a percentage of funds until the end of the warranty period. We are completely find with this arrangement so that you are covered as well.*

CYPRESS MULTIMEDIA, LLC

DEMO WEB/MOBILE LOGIN

Mobile App – GV-Eye

Android -

<https://play.google.com/store/apps/details?id=tw.com.geovision.gveye&hl=en>

Iphone - <https://itunes.apple.com/us/app/gv-eye/id427126976?mt=8>

Web Access - <http://96.92.220.177:100>

Mobile - 96.92.220.177 port 10000 web port 100

User: dvr

Password: dvr

