



CENTRALBIDDING
FROM CENTRAL AUCTION HOUSE

Bid to be serviced by
Southern Tire Mart, LLC
213 Edwards Ave.
New Orleans, LA 70123
504-733-7061 Phone
Steve Sievert, Manager
gov-sales@stmtires.com



**5000125906 ONE YEAR CONTRACT FOR A SUPPLY OF TIRES AND
TUBES FOR THE JEFFERSON PARISH DEPARTMENT OF FLEET
MANAGEMENT**

Jefferson Parish Government

Project documents obtained from www.CentralBidding.com

20-Mar-2019 10:50:29 AM



Bid Number 50 – 00125906

**ONE (1) YEAR CONTRACT FOR A SUPPLY OF VEHICLE TIRES AND TUBES
FOR THE JEFFERSON PARISH DEPARTMENT OF FLEET MANAGEMENT**

APRIL 04, 2019 AT 2:00 PM

ATTENTION VENDORS!!!

**Please review all pages and respond accordingly, complying with all provisions
in the technical specifications and Jefferson Parish Instructions for Bidders and
General Terms and Conditions. All bids must be received in the Purchasing
Department by the bid due date and time.**

Jefferson Parish Purchasing Department

Temporary Location:

Paul D. Connick Sr., Emergency Operations & Communications Center

910 3rd Street,

Gretna, La 70053

Donna Evans

DMEvans@Jeffparish.net

504-364-2691

**A contract for a Supply of Vehicle Tires and Tubes for the Jefferson Parish
Department of Fleet Management
4901 Jefferson Highway Suite A, Jefferson, LA 70121**

Where brand name and stock numbers are specified, it is for the purpose of establishing certain minimum standards of quality. Bids may be submitted for products of equal quality, provided brand names and stock numbers are specified. Complete product data may be required prior to award.

If contract tire is not available, please contact us within five (5) working days of receipt of purchase order.

DATE: 3/19/2019

INVITATION TO BID
THIS IS NOT AN ORDER

Page: 1

BID NO.: 50-00125906

JEFFERSON PARISH

PURCHASING DEPARTMENT
P.O. BOX 9
GRETN, LA. 70054-0009
504-364-2678

BUYER: DMEVANS@jeffparish.net

BIDS WILL BE RECEIVED IN THE WEST BANK PURCHASING DEPT, Paul D. Connick, Sr. Emergency Operations and Communications Center at - 910 3rd Street, Gretna, LA 70053 2:00 PM, 4/04/2019 AND PUBLICLY OPENED THEREAFTER. For convenience, bidders may also submit bids in the East Bank Purchasing Department, Suite 404, Jefferson Parish Joseph S. Yenni Building, 1221 Elmwood Park Blvd., Jefferson LA 70123. However, if submitting bids on the day of bid opening, bidders must submit at the West Bank location only. All bids will be publicly opened at the West Bank location.

At no charge, bidders may also submit via Jefferson Parish's electronic procurement page by visiting www.jeffparishbids.net to register for this free site. Additional instructions are included in the text box highlighting electronic procurement.

LATE BIDS WILL NOT BE ACCEPTED

Unless submitting via online (see Page 3), each bid must be submitted in a sealed envelope bearing on the outside; the name of the Bidder, his address, and the name of the project for which the bid is submitted and the bid number.

NOTE: ONLY BIDS WRITTEN IN INK OR TYPEWRITTEN, AND PROPERLY SIGNED BY A MEMBER OF THE FIRM OR AUTHORIZED REPRESENTATIVE, WILL BE ACCEPTED. PENCIL AND/OR PHOTOSTATIC FIGURES OR SIGNATURES SHALL RESULT IN BID REJECTION.

INSTRUCTIONS FOR BIDDERS AND GENERAL CONDITIONS

THE FOLLOWING INSTRUCTIONS APPLY TO ALL BIDS

All bids submitted are subject to these instructions and general conditions and any special conditions and specifications contained herein, all of which are made part of this bid proposal reference. By submitting a bid, vendor agrees to comply with all provisions of Louisiana Law as well be in compliance with the Jefferson Parish Code of Ordinances, Louisiana Code of Ethics, applicable Jefferson Parish ethical standards and Jefferson Parish Resolution No. 113646 and/or Resolution No. 113647.

Jefferson Parish adheres to the Louisiana Code of Governmental Ethics, contained in Louisiana Revised Statutes Annotated, R.S. 42:1101, et seq. Vendor/Proposer by this submission, warrants that there are no "conflicts of interest" related to this procurement that would violate applicable Louisiana Law. Violation of the Louisiana Code of Governmental Ethics may result in rescission of contract, permit or licenses, and the imposition of fines and/or penalties, without contractual liability to the public in accordance with applicable law.

All vendors submitting bids should register as a Jefferson Parish vendor if not already yet registered. Registration forms may be downloaded from <http://purchasing.jeffparish.net> and by clicking on Vendor Information. Current W-9 forms with respective Tax Identification numbers and vendor applications may be submitted at any time; however, if your company is not registered and/or a current W-9 form is not on file, vendor registration is mandatory. Further, a current W-9 form and respective Tax Identification number must be supplied upon contract execution, should you be awarded a contract and/or issued purchase order. Failure to do so may result in delay of payment.

All quotations shall be based on F.O.B. Agency warehouse or job site, anywhere within the Parish as designated by the Purchasing Department. This provision does not apply to public works projects

JEFFERSON PARISH requires all products to be new (current) and all work must be performed according to standard practices for the project. Unless otherwise specified, no aftermarket parts will be accepted. Unless otherwise specified, all workmanship and materials must have at least one (1) year guaranty, in writing, from the date of delivery and/or acceptance of the project. Any deviations or alterations from the specifications must be indicated and/or supporting documentation supplied with bid submission.

Bidders should submit all questions in writing via email to the buyer's email address as indicated above, no later than Five (5) working days prior to the bid opening. Bid numbers should be mentioned in all requests. If submitting online, vendors may send questions via the E-Procurement site no later than Five (5) working days prior to the bid opening.

If this bid requires a pre-bid conference (see Additional Requirements section), bidders are advised that such conference will be held to allow bidders the opportunity to identify any discrepancies in the bid specifications and seek further clarification regarding instructions. The Purchasing Department will issue a written response to bidders' questions in the form of an Addendum. Please note that all official communication will be expressed in the form of an addendum.

Visit our website at [HTTP://PURCHASING.JEFFPARISH.NET](http://PURCHASING.JEFFPARISH.NET)

All formal Addenda require written acknowledgement on the bid form by the bidder. Failure to acknowledge an Addendum on the bid form shall cause the bid to be rejected. JEFFERSON PARISH reserves the right to award bid to next lowest responsive and responsible bidder in this event.

JEFFERSON PARISH will accept one price for each item unless otherwise indicated. Two or more prices for one item will result in bid rejection. Bidders are required to complete, sign and return the bid form and/or complete and return the associated line item pricing forms as indicated. Vendors must not alter the bid forms. Doing so will cause the bid to be rejected.

A corporate resolution or written evidence of the individual signing the bid having such authority must be submitted with the bid. Failure to comply will cause bid to be rejected. For corporate entities, such written evidence may be a printout of the Louisiana Secretary of State's website listing the signatory as an officer. Such printout shall be included with the bid submission. Bids submitted by Owners or Sole Proprietorships must include certification that he or she owns the entity for which the bid is signed. This documentation must be submitted with the bid. Failure to do so will result in bid rejection.

NOTE: A sample corporate resolution can be downloaded from our website <http://purchasing.jeffparish.net> or you may provide your own document. A sample certification of sole proprietorship can also be downloaded from our website <http://purchasing.jeffparish.net> or you may provide your own document.

INSTRUCTIONS FOR BIDDERS AND GENERAL CONDITIONS

A. AWARD OF CONTRACT: JEFFERSON PARISH reserves the right to award contracts or place orders on a lump sum or individual item basis, or such combination, as shall in its judgment be in the best interest of JEFFERSON PARISH. Every contract or order shall be awarded to the LOWEST RESPONSIVE and RESPONSIBLE BIDDER, taking into consideration the CONFORMITY WITH THE SPECIFICATIONS and the DELIVERY AND/OR COMPLETION DATE. SPLIT AWARDS MADE TO SEVERAL VENDORS WILL ONLY BE GRANTED TO THOSE DEEMED RESPONSIVE AND RESPONSIBLE.

All bid prices shall remain valid for 45 days. Jefferson Parish and the lowest responsive and responsible bidder(s) by mutual written consent may mutually agree to extend the deadline for award by one (1) or more extensions of thirty (30) calendar days.

PROTESTS: Only those vendors that submitted a bid in response to this solicitation may submit a protest in writing to the Director of the Purchasing within 48 hours of bid opening. The Purchasing Director will review it in connection with the Parish Attorney's Office which will then respond in writing as soon as possible.

PREFERENCE: Unless federal funding is directly spent by Jefferson Parish for this purchase, preference is hereby given to materials, supplies, and provisions produced, manufactured or grown in Louisiana, quality being equal to articles offered by competitors outside the state. "LSA - R.S. 38:2251-2261"

B. USE OF BRAND NAMES AND STOCK NUMBERS: Where brand names and stock numbers are specified, it is for the purpose of establishing certain minimum standards of quality. Bids may be submitted for products of equal quality, provided brand names and stock numbers are specified. Complete product data may be required prior to award.

C. CANCELLATION OF CONTRACT: JEFFERSON PARISH reserves the right to cancel all or any part if not shipped promptly. No charges will be allowed for parking or cartage unless specified in quotation. The order must not be filled at a higher price than quoted. JEFFERSON PARISH reserves the right to cancel any contract at anytime and for any reason by issuing a THIRTY (30) day written notice to the contractor.

For good cause and as consideration for executing a contract with Jefferson Parish, vendor conveys, sells, assigns and transfers to Jefferson Parish or its assigns all rights, title and interest in and to all causes of action it may now or hereafter acquire under the antitrust laws of the United States and the State of Louisiana, relating to the particular good or services purchased or acquired by Jefferson Parish.

D. PRICES: Jefferson Parish is exempt from paying sales tax under LSA-R.S. 47:301 (8)(c). All prices for purchases by Jefferson Parish of supplies and materials shall be quoted in the unit of measure specified and unless otherwise specified, shall be exclusive of state and Parish taxes. The price quoted for work shall be stated in figures. In the event there is a difference in unit prices and totals, the unit price shall prevail.

Quantities listed are for bidding purposes only. Actual requirements may be more or less than quantities listed.

Bidders are not to exclude from participation in, deny the benefits of, or subject to discrimination under any program or activity, any person in the United States on the grounds of race, color, national origin, or sex; nor discriminate on the basis of age under the Age Discrimination Act of 1975, or with respect to an otherwise qualified handicapped individual as provided in Section 504 of the Rehabilitation Act of 1973, or on the basis of religion, except that any exemption from such prohibition against discrimination on the basis of religion as provided in the Civil Rights Act of 1964, or Title VI and VII of the Act of April 11, 1968, shall also apply. This assurance includes compliance with the administrative requirements of the Revenue Sharing final handicapped discrimination provisions contained in Section 51.55 (c), (d), (e), and (k)(5) of the Regulations. New construction or renovation projects must comply with Section 504 of the 1973 Rehabilitation Act, as amended, in accordance with the American National Standard Institute's specifications (ANSI A17.1-1961).

Jefferson Parish and its partners as the recipients of federal funds are fully committed to awarding a contract(s) to firm(s) that will provide high quality services and that are dedicated to diversity and to containing costs. Thus, Jefferson Parish strongly encourages the involvement of minority and/or women-owned business enterprises (DBE's, including MBE's, WBE's and SBE's) to stimulate participation in procurement and assistance programs.

INSTRUCTIONS FOR BIDDERS AND GENERAL CONDITIONS

The purpose and intention of this invitation to bid is to afford all suppliers an equal opportunity to bid on all construction, maintenance, repair, operating supplies and/or equipment listed in this bid proposal. JEFFERSON PARISH WILL ACCEPT ONE BID ONLY FROM EACH VENDOR. Items bid must meet specifications.

Advertised bids will be tabulated and a copy of the tabulation will be forwarded to each responding bidder.

IN ACCORDANCE WITH STATE REGULATIONS JEFFERSON PARISH OFFERS ELECTRONIC PROCUREMENT TO ALL VENDORS

This electronic procurement system allows vendors the convenience of reviewing and submitting bids online.

This is a secure site and authorized personnel have limited read access only. Bidders are encouraged to submit electronically using this free service; while the website accepts various file types, one single PDF file containing all appropriate and required bid documents is preferred. Bidders submitting uploaded images of bid responses are solely responsible for clarity. If uploaded images/documents are not legible, then bidder's submission will be rejected. Please note all requirements contained in this bid package for electronic bid submission.

Please visit our E-Procurement Page at www.jeffparishbids.net to register and view Jefferson Parish solicitations. For more information, please visit the Purchasing Department page at <http://purchasing.jeffparish.net>.

The general specifications for construction projects and the purchase of materials, services and/or supplies are those adopted by the JEFFERSON PARISH Council by Resolution No. 113646 or 113647 dated 12/09/09. The general conditions adopted by this resolution shall be considered as much a part of this document as if they were written wholly herein. A copy may be obtained from the Office of the Parish Clerk, Suite 6700, Jefferson Parish General Government Building, 200 Derbigny Street, Gretna, LA 70053. You may also obtain a copy by visiting the Purchasing Department webpage at <http://purchasing.jeffparish.net> and clicking on Online Forms.

ADDITIONAL REQUIREMENTS FOR THIS BID

PLEASE MATCH THE NUMBERS PRINTED IN THIS BOX WITH THE CORRESPONDING INSTRUCTIONS BELOW.

10, 12, 13, 15

1. All bidders must attend the MANDATORY pre-bid conference and will be required to sign in and out as evidence of attendance. In accordance with LSA R.S. 38:2212(I), all prospective bidders shall be present at the beginning of the MANDATORY pre-bid conference and shall remain in attendance for the duration of the conference. Any prospective bidder who fails to attend the conference or remain for the duration shall be prohibited from submitting a bid for the project.
2. Attendance to this pre-bid conference is optional. However, failure to attend the pre-bid conference shall not relieve the bidder of responsibility for information discussed at the conference. Furthermore, failure to attend the pre-bid conference and inspection does not relieve the successful bidder from the necessity of furnishing materials or performing any work that may be required to complete the work in accordance with the specification with no additional cost to the owner.
3. Contractor must hold current applicable JEFFERSON PARISH licenses with the Department of Inspection and Code Enforcement. Contractor shall obtain any and all permits required by the JEFFERSON PARISH Department of Inspection and Code Enforcement. The contractor shall be responsible for the payment of these permits. All permits must be obtained prior to the start of the project. Contractor must also hold any and all applicable Federal and State licenses. Contractor shall be responsible for the payment of these permits and shall obtain them prior to the start of the project.
4. A LA State Contractor's License will be required in accordance with LSA R.S. 37-2150 et. seq. and such license number will be shown on the outside of the bid envelope. Failure to comply will cause the bid to be rejected. Additionally if submitting the bid electronically, then the license number must be entered in the appropriate field in the Electronic Procurement system. Failure to comply will cause the bid to be rejected.
5. It is the bidder's responsibility to visit the job site and evaluate the job before submitting a bid.
6. Job site must be clean and free of all litter and debris daily and upon completion of the contract. Passageways must be kept clean and free of material, equipment, and debris at all times. Flammable material must be removed from the job site daily because storage will not be permitted on the premises. Precautions must be exercised at all times to safeguard the welfare of JEFFERSON PARISH and the general public.

INSTRUCTIONS FOR BIDDERS AND GENERAL CONDITIONS

7. PUBLIC WORKS BIDS: All awards for public works in excess of \$5,000.00 will be reduced to a formal contract which shall be recorded at the contractor's expense with the Clerk of Court and Ex-Officio Recorder of Mortgages for the Parish of Jefferson. A price list of recordation costs may be obtained from the Clerk of Court and Ex-Officio Recorder of Mortgages for the Parish of Jefferson. All awards in excess of \$25,000.00 will require both a performance and a payment bond. Unless otherwise stated in the bid specifications, the performance bond requirements shall be 100% of the contract price. Unless otherwise stated in the bid specifications, the payment bond requirements shall be 100% of the contract price. Both bonds shall be supplied at the signing of the contract.
8. NON-PUBLIC WORKS BIDS: A performance bond will be required for this bid. The amount of the bond will be 100% of the contract price unless otherwise indicated in the specifications. The performance bond shall be supplied at the signing of the contract.
9. NON-PUBLIC WORKS BIDS: A payment bond will be required for this bid. The amount of the bond will be 100% of the contract price unless otherwise indicated in the specifications. The payment bond shall be supplied at the signing of the contract.
10. All bidders must comply with the requirements stated in the attached "Standard Insurance Requirements" sheet attached to this bid solicitation. Prior to contract executions/purchase order issuance, the successful bidder will be required to provide final insurance certificates which shall name Jefferson Parish as an additional insured in accordance with the instructions in the aforementioned "Standard Insurance Requirements" sheet.
11. A bid bond will be required with bid submission in the amount of 5% of the total bid, unless otherwise stated in the bid specifications. Acceptable forms shall be limited to cashier's check, certified check, or surety bid bond. All sureties must be in original format (no copies). If submitting a bid online, vendors must submit an electronic bid bond through the respective online clearinghouse bond management system(s) as indicated in the electronic bid solicitation on Central Auction House. No scanned paper copies of any bid bond will be accepted as part of the electronic bid submission.
12. This is a requirements contract to be provided on an as needed basis. JEFFERSON PARISH makes no representations or warranties with regard to minimum guaranteed quantities unless otherwise stated in the bid specifications.
13. Freight charges should be included in total cost when quoting. If not quoted FOB DELIVERED, freight must be quoted as a separate item. Bid may be rejected if not quoted FOB DELIVERED or if freight charges are not indicated on bid form.
14. PUBLIC WORKS BIDS - Completed, Signed and Properly Notarized Affidavits Required; This applies to all solicitations for construction, alteration or demolition of public buildings or projects, in conformity with the provisions contained in LSA-RS 38:2212.9, LSA-RS 38:2212.10, LSA-RS 38:2224, and Sec 2-923.1 of the Jefferson Parish Code of Ordinances. For bidding purposes, all bidders must submit with bid submission COMPLETED, SIGNED and PROPERLY NOTARIZED Affidavits, including: Non-Conviction Affidavit, Non-Collusion Affidavit, Campaign Contribution Affidavit, Debt Disclosures Affidavit and E-Verify Affidavit. For the convenience of vendors, all affidavits have been combined into one form entitled PUBLIC WORKS BID AFFIDAVIT. This affidavit must be submitted in its original format, and without material alteration, in order to be compliant and for the bid to be considered responsive. A scanned copy of the completed, signed and properly notarized affidavit may be submitted with the bid, however, the successful bidder must submit the original affidavit in its original format and without material alteration upon contract execution. Failure to comply will result in the bid submission being rejected as non-responsive. The Parish reserves the right to award bid to the next lowest responsive and responsible bidder in this event.
15. NON PUBLIC WORK BIDS - Completed, Signed and Properly Notarized Affidavits Required in conformity with the provisions contained in LSA - RS 38:2224 and Sec 2-923.1 of the Jefferson Parish Code of Ordinances. For bidding purposes, all bidders must submit with bid submission COMPLETED, SIGNED and PROPERLY NOTARIZED Affidavits, including: Non-Collusion Affidavit, Debt Disclosures Affidavit and Campaign Contribution Affidavit. For the convenience of vendors, all affidavits have been combined into one form entitled NON PUBLIC WORKS BID AFFIDAVIT. This affidavit must be submitted in its original format, and without material alteration, in order to be compliant and for the bid to be considered responsive. A scanned copy of the completed, signed and properly notarized affidavit may be submitted with the bid, however, the successful bidder must submit the original affidavit in its original format and without material alteration upon contract execution. Failure to comply will result in the bid submission being rejected as non-responsive. The Parish reserves the right to award bid to the next lowest responsive and responsible bidder in this event.
16. The ensuing contract for this bid solicitation may be eligible for FEMA reimbursement and/or Federal funding/reimbursement. As such, the referenced appendix will be applicable accordingly and shall be considered a part of the bid documents. All applicable certifications must be duly completed, signed and submitted with bid submission. Failure to submit applicable certifications with bid submission will result in bid rejection.
17. For this project, the Contractor shall not pay any state or local sales or use taxes on materials and equipment which are affixed and made part of the immovable property of the project or which permanently incorporated in the project (hereinafter referred to as "applicable materials and equipment"). All purchases of applicable materials or equipment shall be made by the contractor on behalf of and as the agent of Jefferson Parish (Owner), a political subdivision of the State of Louisiana. No state and local sales and use taxes are owned on applicable materials and equipment under the provisions of Act 1029 of the 1991 Regular Session - Louisiana Revised Statute 47:301(8)(c). Owner will furnish contractor a certificate form which certifies that Owner is not required to pay such state or local sales and use taxes, and contractor shall furnish a copy of such certificate to all vendors or suppliers of the applicable materials and equipment.

It shall be the duty of every parish officer, employee, department, agency, special district, board, and commission: and the duty of every contractor, subcontractor, and licensee of the parish, and the duty of every applicant for certification of eligibility for a parish contract or program, to cooperate with the Inspector General in any investigation, audit, inspection, performance review, or hearing pursuant to Jefferson Parish Code of Ordinances Section 2-155.10(19). By submitting a bid, vendor acknowledges this and will abide by all provisions of the referenced Jefferson Parish Code of Ordinances.

See Page 1 for Conflicts of Interest Statement

DATE: 3/19/2019

Page: 5

BID NO.: 50-00125906

BID FORM
Non Public Works**All Public Work Projects are required to use the Louisiana Uniform Public Work Bid Form**

All prices must be held firm unless an escalation provision is requested in this bid. Jefferson Parish will allow one escalation during the term of the contract, which may not exceed the U.S. Bureau of Labor Statistics National Index for all Urban Consumers, unadjusted 12 month figure. The most recently published figure issued at the time an adjustment is requested will be used. A request must be made in writing by the vendor, and the escalation will only be applied to purchases made after the request is made.

Are you requesting an escalation provision?

YES _____ NO ✓MAXIMUM ESCALATION PERCENTAGE REQUESTED 0 %INITIAL BID PRICES WILL REMAIN FIRM THROUGH THE DATE OF 1 Year

For the purposes of comparison of bids when an escalation provision is requested, Jefferson Parish will apply the maximum escalation percentage quoted by the bidder to the period to which it is applied in the bid. The initial price and the escalation will be used to calculate the total bid price. It will be assumed, for comparison of prices only, that an equal amount of material or labor is purchased each month throughout the entire contract.

DELIVERY: FOB JEFFERSON PARISH

INDICATE DELIVERY DATE ON EQUIPMENT AND SUPPLIES

1-2 Days In Stock3-10 Days Warehouse**LOUISIANA CONTRACTOR'S LICENSE NO.: (if applicable)**N/A**THIS SECTION MUST BE COMPLETED BY BIDDER:**FIRM NAME: Southern Tire Mart, LLCADDRESS: 800 Highway 98CITY, STATE: Columbia, MSZIP: 39429TELEPHONE: (877) 786-4681FAX: (601) 651-0655EMAIL ADDRESS: richard.conwill@stmtires.com

In the event that addenda are issued with this bid, bidders MUST acknowledge all addenda on the bid form. Bidder must acknowledge receipt of an addendum on the bid form as indicated. Failure to acknowledge any addendum on the bid form will result in bid rejection.

Acknowledge Receipt of Addenda: NUMBER: _____

NUMBER: _____

NUMBER: _____

NUMBER: _____

TOTAL PRICE OF ALL BID ITEMS: \$ \$116,190.80

AUTHORIZED

SIGNATURE: Richard Conwill

Printed Name

TITLE: Director of Government Sales

SIGNING INDICATES YOU HAVE READ AND COMPLY WITH THE INSTRUCTIONS AND CONDITIONS.

NOTE: All bids should be returned with the BID NUMBER and BID OPENING DATE indicated on the outside of the envelope submitted to the Purchasing Department.

INVITATION TO BID FROM JEFFERSON PARISH - continued

BID NO.: 50-00125906

SEALED BID

ITEM NUMBER	QUANTITY	U/M	DESCRIPTION OF ARTICLES	UNIT PRICE QUOTED	TOTALS
			ONE YEAR CONTRACT FOR A SUPPLY OF VEHICLE TIRES AND TUBES FOR THE JEFFERSON PARISH DEPARTMENT OF FLEET MANAGEMENT		
1	2.00	EA	0001 - FL28-9-15 IND. LUG TUBE AND FLAP Gladiator Power Grip #GL1596822895	\$140.84	\$281.68
			A CONTRACT FOR VEHICLES TIRES AND TUBES FOR THE JEFFERSON PARISH DEPARTMENT OF FLEET MANAGEMENT.		
2	12.00	EA	0002 - FL6.50-10 IND. LUG TUBE AND FLAP Gladiator Power Grip #GL1596826503	\$74.70	\$896.40
3	2.00	EA	0003 - FL 6.00-9 IND. LUG 6.90-9 TIRES AND TUBES Gladiator Power Grip #GL1596826093	\$57.83	\$115.66
4	4.00	EA	0004 - FL7.00-12 IND. LUG TIRES AND TUBES Gladiator Power Grip #GL1596827025	\$106.26	\$425.04
5	4.00	EA	0005 - I10-16.5 BOBCAT Gladiator Skid Steer #GL1597120653	\$100.11	\$400.44
6	6.00	EA	0006 - I11L-16 RIB 10 PLY GALAXY (204230) Ag Dura 4105 I-1#104124150	\$83.23	\$499.38
7	4.00	EA	0007 - I12-16.5 BOBCAT Gladiator Skid Steer #GL1597122654	\$125.77	\$503.08
8	2.00	EA	0008 - I14-17.5 IND. LUG Galaxy XD2010 #GAL111276	\$173.00	\$346.00
9	2.00	EA	0009 - I15.0-55-17 R-1 TBLS Alliance #22204980AL-IN	\$405.60	\$813.20
10	2.00	EA	0010 - I17.5-5-24 R-4 Galaxy EZ Rider #GAL200434	\$381.99	\$763.98
11	6.00	EA	0011 - I17.5-25 LOADER FIRESTONE SUPER GOUND GRIP 12 PLY Firestone Super Ground Grip #425129	\$569.25	\$3,415.50
12	6.00	EA	0012 - 019.5L-24 R4 Gladiator R-4 #GL1597529244	\$402.02	\$2,412.12

INVITATION TO BID FROM JEFFERSON PARISH - continued

BID NO.: 50-00125906

SEALED BID

ITEM NUMBER	QUANTITY	U/M	DESCRIPTION OF ARTICLES	UNIT PRICE QUOTED	TOTALS
13	4.00	EA	0013 - 120.5-25 LOADER FIRESTONE SUPER GROUND GRIP	\$1,031.75	\$4,127.00
			12 PLY 16 Ply Firestone Super Ground Grip #408492		
14	2.00	EA	0014 - 9.5 L15 Cropmaster Rib Imp #ATI07	\$55.29	\$110.58
15	4.00	EA	0015 - LT12-16.5 HIGHWAY BIAS Gladiator Skid Steer #GL1597122654	\$125.77	\$503.08
16	4.00	EA	0016 - LT215-85R-16 HIGHWAY F/S TRANSFORCE HT.	\$107.67	\$430.68
			10 PLY Firestone Transforce HT2 #002758		
17	20.00	EA	0017 - LT225-75R-16 HIGHWAY 10 PLY	\$109.00	\$2,180.00
			F/S TRANSFORCE HT Firestone Transforce HT2 #002760		
18	4.00	EA	0018 - LT235-85R-16 HIGHWAY TYPE F/S TRANSFORCE HT.	\$119.39	\$477.56
			10 PLY Firestone Transforce HT2 #002759		
19	6.00	EA	0018A - 25-13-9 TURF Carlisle HD Field Trax #CA588394	\$116.04	\$696.24
20	15.00	EA	0019 - LT245-70R-17 HIGHWAY F/S TRANSFORCE HT.	\$125.05	\$1,875.75
			10 PLY Firestone Transforce HT2 #002767		
21	6.00	EA	0020 - LT245-70R-17 MT F/S DESTINATION MT	\$166.84	\$1,001.04
			Firestone Destination MT #000174		
22	4.00	EA	0021 - LT245-75R-16 HIGHWAY TRANSFORCE HT	\$114.00	\$456.00
			10 PLY Firestone Transforce HT2 #002761		
23	20.00	EA	0022 - LT245-75R-17 HIGHWAY F/S TRANSFORCE HT	\$125.00	\$2,500.00
			Firestone Transforce HT2 #002777		
24	4.00	EA	0023A - LT265-70R-17 AT LT265-70R-17 AT	\$131.61	\$526.44
			Firestone Transforce AT2 #000187		

INVITATION TO BID FROM JEFFERSON PARISH - continued

BID NO.: 50-00125906

SEALED BID

ITEM NUMBER	QUANTITY	U/M	DESCRIPTION OF ARTICLES	UNIT PRICE QUOTED	TOTALS
			F/S-DISTINATION		
25	2.00	EA	0024 - LT265-75R-16 HIGHWAY 10 PLY Firestone Transforce HT2 #002762	\$131.29	\$262.58
26	2.00	EA	0024A - LT275-70R-18 AT F/S TRANSFORCE AT Firestone Transforce AT2 #000189	\$156.35	\$312.70
27	8.00	EA	0025 - LT8.75 ^R 16.5 HIGHWAY F/S TRANSFORCE HT Firestone Transforce HT2 #002761	\$106.03	\$848.24
28	8.00	EA	0026 - MT10.00R-20 GRIP Triangle TR666 #10156660130	\$231.83	\$1,854.64
29	2.00	EA	0027 - MT10.00R-20 HIGHWAY Doublecoin RR150 #1133281026	\$276.00	\$552.00
30	2.00	EA	0028 - MT10R-17.5 HIGHWAY Doublecoin RT500 #1133391706	\$200.00	\$400.00
31	4.00	EA	0029 - MT10R-22.5 GRIP 10R22.5 GRIP 12 PLY Firestone FD663 #281034	\$287.57	\$1,150.28
32	8.00	EA	0030 - MT10R-22.5 HIGHWAY Firestone FS561 #248579	\$284.06	\$2,272.48
33	20.00	EA	0031 - MT11R-22.R GRIP 14 PLY FIRESTONE 560 Firestone FD663 #281042	\$317.23	\$6,344.60
34	8.00	EA	0032 - MT11-22.5 HIGHWAY 14 PLY FIRESTONE 560 Firestone FS560+ #156531	\$289.74	\$2,317.92
35	2.00	EA	0033 - MT12R-22.5 16 PLY SPECIAL TRANSIT TIRES METRO MILER G159. SIZE 12.5/R22.5 LOAD RANGE/PLY RATING J/16 COLD INFLATION (MIN) SINGLE TIRE 7340 LBS. AT 120 PSI DUAL TIRE 6400 LBS. AT 110 PSI. Firestone FS561 #248494	\$347.00	\$694.00

INVITATION TO BID FROM JEFFERSON PARISH - continued

BID NO.: 50-00125906

SEALED BID

ITEM NUMBER	QUANTITY	U/M	DESCRIPTION OF ARTICLES	UNIT PRICE QUOTED	TOTALS
			BRIDGESTONE R250G 16-PLY (B292850) - 16 PLY (292-850)		
36	2.00	EA	0034 - MT12R-22.5 HIGHWAY 16 PLY Firestone FS561 #248494 12R22.5 GOODYEAR 138. PLY 16. G159	\$346.31	\$692.62
37	15.00	EA	0035 - MT15-75R-17.5 HIGHWAY BRIDGESTONE R184 16 PLY Bridgestone R184 #264695	\$332.04	\$4,980.60
38	2.00	EA	0036 - MT225-70-19.5 GRIP F/S 690 Firestone FD690 #186675	\$221.00	\$442.00
39	6.00	EA	0037 - MT225-70R-19.5 GRIP FS 690 Firestone FS561 #248409	\$220.83	\$1,324.98
40	2.00	EA	0038 - MT245-70R-19.5 GRIP FS 690 Firestone FD690 + #006510	\$237.00	\$474.00
41	2.00	EA	0039 - MT245-70R-19.5 HIGHWAY F/S 560 Firestone FS561 #248443	\$235.20	\$470.40
42	6.00	EA	0040 - MT255-70R-22.5 HIGHWAY F/S-560 Firestone FS560 #192982	\$264.91	\$1,589.46
43	2.00	EA	0041 - MT265-70R-19.5 GRIP TRIANGLE # TRI156570940 Doublecoin RLB400 #1134906796	\$206.05	\$412.10
44	2.00	EA	0042 - MT265-70R-19.5 HIGHWAY Doubelcoin RT600 #1133706796	\$205.41	\$410.82
45	4.00	EA	0043 - MT 275-70OR 22.5 BRIDGESTONE R250 TIRES AND 16 PLY AND ARE SPEED RATED AT 75 MPH 18 Ply SINGLE LOAD RATED 7000 LBS. AT 120 PSI (216-585) Bridgestone R250ED #216585	\$459.00	\$1,836.00
46	2.00	EA	0044 - MT295-75R-22.5 GRIP F/S 690 Firestone FD690+ #006514	\$309.54	\$619.08

DATE: 3/19/2019

Page 10

INVITATION TO BID FROM JEFFERSON PARISH - continued

BID NO.: 50-00125906

SEALED BID

ITEM NUMBER	QUANTITY	U/M	DESCRIPTION OF ARTICLES	UNIT PRICE QUOTED	TOTALS
47	6.00	EA	0045 - MT295-75R-22.5 HIGHWAY Firestone FS561 #248273	\$315.24	\$1,891.44
48	10.00	EA	0046 - MT315-80R-22.5 FIRESTONE FS400 TIRES ARE 20 PLY AND SPEED RATED AT 75 MPH. SINGLE LOAD RATED 9090 LBS. AT 130 PSI. DUAL LOAD RATED 8270 LBS AT 130 PSI Firestone FS400 #004168	\$478.00	\$4,780.00
49	10.00	EA	0047 - MT385-66R-22.5 HIGHWAY F/S T839 Firestone FS818 #247780	\$459.67	\$4,596.70
50	2.00	EA	0048 - MT315-80R-22.5 HIGHWAY 20 PLY F/S-400 Firestone FS400 #004168	\$478.00	\$956.00
51	15.00	EA	0049 - MT425-65R-22.5 HIGHWAY F/S T839 Firestone FS818 #41235	\$522.03	\$7,830.45
52	2.00	EA	0050 - 12-16.5 TURF GALAXY MIGHTY MOW Galaxy Mighty Mow #GAL135262	\$318.96	\$637.92
53	2.00	EA	0051 - MT9R-17.5 HWY. triel 135189002 Bridgestone R180 #272914	\$260.00	\$520.00
54	2.00	EA	0052 - LT 235-65R16 10 PLY HWY. Firestone Champion Fuel Fighter #014995	\$76.80	\$153.60
55	2.00	EA	0053 - P215-60R-16 HIGHWAY Firestone Champion Fuel Fighter #015029	\$75.95	\$151.90
56	2.00	EA	0054 - P225-60R-16 HIGHWAY P225-60R16 HIGHWAY 4-PLY Firestone Champion Fuel Fighter #015607	\$77.09	\$154.18
57	2.00	EA	0055 - P255-60R- 18 HIGHWAY.rial West Lake SU318 #24609001	\$111.04	\$222.08
58	2.00	EA	0056 - P225-65R-16 HWY.rial F/S DESTINATION LE 2 Firestone Champion Fuel Fighter #015335	\$73.86	\$147.72

INVITATION TO BID FROM JEFFERSON PARISH - continued

BID NO.: 50-00125906

SEALED BID

ITEM NUMBER	QUANTITY	U/M	DESCRIPTION OF ARTICLES	UNIT PRICE QUOTED	TOTALS
59	4.00	EA	0057 - P225-70R-15 HIGHWAY.rial F/S DESTINATION LE 2 Firestone Destination LE2 #140344	\$94.74	\$378.96
60	2.00	EA	0058 - P235-55R 17 HIGHWAY Firestone Champion Fuel Fighter #015641	\$97.49	\$194.98
61	2.00	EA	0059 - P235-60R 17 HIGHWAY Firestone Champion Fuel Fighter #015352	\$86.87	\$173.74
62	10.00	EA	0060 - P235-70R-16 HIGHWAY F/S DESTINATION LE 2 Firestone Destination LE2 #097759	\$106.34	\$1,063.40
63	2.00	EA	0061 - P245-55R 17 HIGHWAY F/S DESTINATION LE 2 Bridgestone Dueler H/L #126404	\$153.89	\$307.78
64	2.00	EA	0062 - P245-55R 18 HIGHWAY F/S FIREHAWK GT V PURSUIT (000177) GTZ Firestone Firehawk GT Z Pursuit #000177	\$129.51	\$259.02
65	2.00	EA	0063 - P245-60R-18 HIGHWAY F/S DESTINATION LE 2 Firestone Destination LE2 #017970	\$103.55	\$207.10
66	2.00	EA	0064 - P245-65-17 HIGHWAY F/S DESTINATION LE 2 Firestone Destination LE2 #097997	\$100.69	\$201.38
67	10.00	EA	0065 - P245-70R-17 HIGHWAY F/S DESTINATION LE 2 Firestone Destination LE2 #097827	\$106.96	\$1,069.60
68	10.00	EA	0066 - P255-65 R 17 HIGHWAY.rial F/S DESTINATION LE 2 Firestone Destination LE2 #098048	\$112.58	\$1,125.80
69	4.00	EA	0067 - P265-65R-18 HIGHWAY F/S DESTINATION LE 2 Firestone Destination LE2 #0018004	\$124.58	\$498.32
70	10.00	EA	0067A - P265-70R-17 HIGHWAY F/S DESTINATION LE 2 Firestone Destination LE2 #097912	\$120.26	\$1,202.60
71	2.00	EA	0068 - P275-65R-18 HIGHWAY F/S DESTINATION LE 2 Firestone Destination LE2 #136060	\$129.77	\$259.54

INVITATION TO BID FROM JEFFERSON PARISH - continued

BID NO.: 50-00125906

SEALED BID

ITEM NUMBER	QUANTITY	U/M	DESCRIPTION OF ARTICLES	UNIT PRICE QUOTED	TOTALS
			FIRESTONE BRAND		
72	2.00	EA	0069 - ST175-80R-13 TRL. 6 PLY Triangle TR653 #10146530010	\$33.01	\$66.02
73	4.00	EA	0070 - ST205-754-14 TRL. al 8 PLY Gladiator QR25-TS #GL1942002042	\$63.24	\$252.96
74	4.00	EA	0071 - ST205-75R-15 TRL. 8 PLY Triangle TR653 #10146530140	\$47.74	\$190.96
75	12.00	EA	0072 - ST225-75R-16 TRL. 10 PLY Triangle TR653 #10146530150	\$58.51	\$702.12
76	12.00	EA	0073 - ST235-80R-16 TRL. 10 PLY 12 Ply Triangle TR653 #10146530160	\$50.73	\$608.76
77	2.00	EA	0074 - TU-1000R-15 TUBE TR440 Firestone TR444 #552629	\$21.79	\$43.58
78	2.00	EA	0075 - TU-1000R-16-TUBE IMPLEMENT Country Wide TR15 #CW281285	\$16.43	\$32.86
79	2.00	EA	0075A - TU1000R-20 TUBE TR444 Firestone TR444 #540234	\$34.16	\$68.32
80	2.00	EA	0076 - T-12.4-28 TUBE Firestone #556896	\$37.16	\$74.32
81	2.00	EA	0077 - TU18.4-28 TUBE Firestone #556879	\$57.47	\$114.94
82	2.00	EA	0078 - TU-18.4-34 TUBE Country Wide TR218A #CW322220	\$54.73	\$109.46
83	2.00	EA	0079 - TU-18.4-38 TUBE Country Wide TR218A #CW322270	\$57.09	\$114.18
84	2.00	EA	0080 - TU-28-9-15 TUBE TR440 Firestone TR440 #540625	\$14.03	\$28.06
85	2.00	EA	0081 - TU-500-8 TUBE JS-2al Firestone J2S #542814	\$7.27	\$14.54

INVITATION TO BID FROM JEFFERSON PARISH - continued

BID NO.: 50-00125906

SEALED BID

ITEM NUMBER	QUANTITY	U/M	DESCRIPTION OF ARTICLES	UNIT PRICE QUOTED	TOTALS
86	2.00	EA	0082 - TU-6000-9 TUBE JS-2 Country Wide JS2 #250380	\$8.01	\$16.02
87	2.00	EA	0083 - TU-650-10 TUBE TR440 Country Wide TR75A #CW250435	\$8.47	\$16.94
88	2.00	EA	0084 - TY-7000-12 TUBE TR440 Firestone TR440 #533343	\$13.59	\$27.18
89	2.00	EA	0085 - T10.00-16-MULTI RIB TBLS Interco F-2 4 Rib #GRF267	\$78.97	\$157.94
90	2.00	EA	0086 - T1100-16 MULTI-TIB TBLS. Interco F-2 3 Rib #GRF247	\$139.00	\$278.00
91	2.00	EA	0087 - T12.4-28-R1-TBLS Interco TL R-1 #GRR1-28	\$254.79	\$509.58
92	2.00	EA	0088 - T13.6-24 R1 TBLS Interco TL R-1 #GRR1-22	\$265.85	\$531.70
93	2.00	EA	0089 - T14.9-28R1 TBLS Firestone SAT II 23 #365078	\$397.06	\$794.12
94	2.00	EA	0090 - T16.9-30-R-1 TBLS Galaxy Agri Trac #GAL572708	\$517.05	\$1,034.10
95	2.00	EA	0091 - T16.9-34-R-1 TBLS Ag Dura R-1 TL #429166150	\$485.03	\$970.06
96	2.00	EA	0092 - T18.4-28-6 PLY R1 Firestone Traction Field & Road #338494	\$914.43	\$1,828.86
97	2.00	EA	0093 - T18.4-30 R-1 TBLS Firestone SAT II 23 #372626	\$574.00	\$1,148.00
98	2.00	EA	0094 - T18.4-34-R-1 TBLS Firestone SAT II 23 #372592	\$618.17	\$1,236.34
99	2.00	EA	0095 - T18.4R38 R-1 TBLS Galaxy R-1 #GAL536777	\$753.74	\$1,507.48
100	2.00	EA	0096 - T650-16 TRI RIB TBLS Interco F-2 3 Rib #VTR-061	\$36.33	\$72.66
101	2.00	EA	0097 - T750-16-TRI-RIB TBLS Carlisle F-2 3 Rib #CA52F384	\$111.19	\$222.38

INVITATION TO BID FROM JEFFERSON PARISH - continued

BID NO.: 50-00125906

SEALED BID

ITEM NUMBER	QUANTITY	U/M	DESCRIPTION OF ARTICLES	UNIT PRICE QUOTED	TOTALS
102	2.00	EA	0098 - T750-18 TRI RIB TBLS Ag Dura F-2 3 Rib	\$95.21	\$190.42
103	2.00	EA	0099 - 11-4.00-5 RIB Hi Run SU08 #WD1090	\$6.91	\$13.82
104	2.00	EA	0100 - 13-650-6 TURF Gladiator Turf Master #GL1648706653	\$13.11	\$26.22
105	8.00	EA	0101 - 15-6000-6 TURF Hi Run SU08 #WD1201	\$13.74	\$109.92
106	4.00	EA	0102 - 16-6.50-8 TURF Hi Run SU08 #WD1202	\$16.63	\$66.52
107	2.00	EA	0103 - 18.4-38R-1 TRACTOR TIRE TBLS Interco TL R-1 #GRR1-56	\$484.34	\$968.68
108	2.00	EA	0104 - 18-6.50-8 TURF Carlisle Turf Saver #CA5110991	\$41.89	\$83.78
109	10.00	EA	0105 - 18-8.50-8 TURF 4 PLY Hi Run SU05 #WD1133	\$22.71	\$227.10
110	2.00	EA	0106 - 18-9.50-8 TURF 6 PLY 4 Ply Hi Run SU05 #WD1134	\$23.77	\$47.54
111	2.00	EA	0107 - 20.5-8-10 HIGHWAY 10 PLY Carlisle Sport Trail #CA5193501	\$67.19	\$134.38
112	2.00	EA	0108 - 20-10.00-8 TURF Hi Run Turfmaster #WD1138	\$29.86	\$59.72
113	2.00	EA	0109 - 20-8.00-10 TURF Hi Run SU12 #WD1161	\$35.30	\$70.60
114	4.00	EA	0110 - 22.5-10.00-9 TURF OTR Wheel Engineering #T22510800	\$54.43	\$217.72
115	4.00	EA	0111 - 22.5-10.8 TURF TAMER Carlisle Turf Tamer #CA55U3C7	\$93.66	\$374.64
116	4.00	EA	0112 - 22-11.00-8 TURF Hi Run SU17 #WD1062	\$42.94	\$171.76
117	2.00	EA	0113 - 23-10.5-12 TURF Gladiator Tuf Master #GL1648701213	\$37.20	\$74.40

INVITATION TO BID FROM JEFFERSON PARISH - continued

BID NO.: 50-00125906

SEALED BID

ITEM NUMBER	QUANTITY	U/M	DESCRIPTION OF ARTICLES	UNIT PRICE QUOTED	TOTALS
118	2.00	EA	0114 - 23-8.50-12 TURF Gladiator Turf Master #GL164701283	\$40.03	\$80.06
119	2.00	EA	0115 - 24-12-12 TURF OTR Wheel Engineering #T241212004	\$52.53	\$105.06
120	2.00	EA	0116 - 24-8.50-14 TURF Carlisle Turf #LVA13930	\$84.29	\$168.58
121	2.00	EA	0117 - 24-9.50-10 TURF Carlisle Turf Trac #5753P2	\$97.63	\$195.26
122	2.00	EA	0118 - 24-10.50-10 TURF Carlisle All Trail II #CA55A3N9	\$112.34	\$224.68
123	2.00	EA	0119 - 26.5-14-12 TURF Carlisle Ultra Trac #CA529386	\$189.06	\$378.12
124	2.00	EA	0120 - 26-12-12 TURF Gladiator Turf Master #GL1648701226	\$67.81	\$135.62
125	2.00	EA	0121 - 29-14-15-TURF Carlisle Ultra Trac #CA5293E6	\$285.76	\$571.52
126	2.00	EA	0122 - 31-13.5-15 TURF Carlisle Multi Trac #CA560362	\$227.29	\$454.58
127	2.00	EA	0123 - 36-14-15 TURF R-3 Carlisle Multi Trac #CA560361	\$311.00	\$622.00
128	2.00	EA	0124 - 4.10-3.50-4 RIB TBLS Hi Run ASU14 #WD048	\$6.09	\$12.18
129	2.00	EA	0125 - 4.80-12 TRAILER 6 PLY TBLS OTR Wheel Engineering P811 #T4812002	\$23.49	\$46.98
130	2.00	EA	0126 - 4.80-8 TRAILER 6 PLY TBLS Super Cargo SU01 #WD003	\$15.59	\$31.18
131	2.00	EA	0127 0 5.70-8 TRAILER 6 PLY TBLS OTR Wheel Engineering P811 #T5708003	\$26.31	\$52.62
132	2.00	EA	0128 - 7-14.5 HIGHWAY Deestone D902 #DS6300	\$68.43	\$136.86
133	2.00	EA	0129 - 8-14.5 HIGHWAY Carlisle Sport Trail #CA6H01451	\$79.07	\$158.14

INVITATION TO BID FROM JEFFERSON PARISH - continued

BID NO.: 50-00125906

SEALED BID

ITEM NUMBER	QUANTITY	U/M	DESCRIPTION OF ARTICLES	UNIT PRICE QUOTED	TOTALS
134	2.00	EA	0130 - 9-145 HWY. Loadmax LPT #ATTR-12	\$100.00	\$200.00
135	2.00	EA	0131 - 9-3.60-4 4 PLY SMOOTH Carlisle Smooth #CA5120101	\$16.16	\$32.32
136	2.00	EA	0132 - SECTION REPAIR 122 (SMALL)	\$20.00	\$40.00
137	2.00	EA	0133 - SECTION REPAIR 140 (LARGE)	\$45.00	\$90.00
138	2.00	EA	0134 - 9-350-4 FLAT FREE TIRE AND WHEEL ASSEMBLY Carlisle Flat Free #CA7M006	\$18.13	\$36.26
139	2.00	EA	0135 - P 215-55R16 HWY F/S FIRE FIGHTER Firestone Champion Fuel Fighter #015488	\$72.93	\$145.86
140	2.00	EA	0136 - P225-65-17 HWY F/S DESTINATION Firestone Destination LE2 #097946	\$90.40	\$180.80
141	8.00	EA	0137 - P 265-60-18 HWY. Firestone Destination LE2 #098099	\$122.61	\$980.88
142	2.00	EA	0138 - M235-75R17.5 HWY. Gladiator WR55 #GL1933293176	\$143.56	\$287.12
143	2.00	EA	0139 - M1000-20 EXTRA TRACTION LUG OR E T LUG 16 PR WITH TUBE Maxam MS801 #MAX70107	\$468.35	\$936.70
144	4.00	EA	0140 - 26-12-16 TURF OTR Wheel Engineering #T261216002	\$101.61	\$406.44
145	4.00	EA	0141 - P-235-65 R-18 HWY DESTINATION LE 2 Firestone Destination LE2 #097980	\$99.75	\$399.00
146	4.00	EA	0142 - P285-45R22 HWY. DESTINATION LE 2 Firestone Destination LE2 #002019	\$183.21	\$732.84
147	2.00	EA	0143 - P255-65-R18 HWY. DESTINATION LE 2 Firestone All Season #003072	\$103.37	\$206.74

INVITATION TO BID FROM JEFFERSON PARISH - continued

BID NO.: 50-00125906

SEALED BID

ITEM NUMBER	QUANTITY	U/M	DESCRIPTION OF ARTICLES	UNIT PRICE QUOTED	TOTALS
148	2.00	EA	0144 - 410-35-4 FLAT FREE TIRE AND WHEEL MARATHON Carlisle Flat Free #CA7M009	\$20.46	\$40.92
149	2.00	EA	0145 - P 185-65R14 HWY. West Lake RP185 #24515033	\$41.47	\$82.94
150	2.00	EA	0146 - 12.5-18 R-4 Galaxy Sup Ind #GAL201289	\$255.65	\$511.30
151	2.00	EA	0147 - 15.5-80-18 R-4 BKT AT621 #94028542	\$368.45	\$736.90
152	2.00	EA	0148 - P265-70R17 AT Atturo Trail Blade AT #10048342	\$104.80	\$209.60
153	2.00	EA	0149 - 20-10-10 TURF OTR Wheel Engineering #T201010006	\$32.14	\$64.28
154	2.00	EA	0150 - LT235-80R17 HWY Firestone Transforce HT2 #002766	\$123.58	\$247.16
155	2.00	EA	0151 - P225-65R17 HWY Firestone Champion Fuel Fighter #014944	\$80.00	\$160.00
156	2.00	EA	0152 - P215-55R16 HWY Firestone Champion Fuel Fighter #015488	\$72.93	\$145.86
157	2.00	EA	0153 - P-5.00-6 TURF Deestone D265 #DS7021	\$11.00	\$22.00
158	2.00	EA	0154 - P225-60-18 HWY. Firestone Champion Fuel Fighter #015301	\$74.70	\$149.40
159	2.00	EA	0155 - P185-65R14 HWY West Lake RP18 #24515033	\$41.47	\$82.94
160	2.00	EA	0156 - P215-55R16 HWY. Firestone Champion Fuel Fighter #015488	\$72.93	\$145.86
161	2.00	EA	0157 - P225-65R17 HWY. Firestone Champion Fuel Fighter #014944	\$80.00	\$160.00
162	2.00	EA	0158 P265-70R17 AT Firestone Destination AT #026784	\$136.48	\$272.96

INVITATION TO BID FROM JEFFERSON PARISH - continued

BID NO.: 50-00125906

SEALED BID

ITEM NUMBER	QUANTITY	U/M	DESCRIPTION OF ARTICLES	UNIT PRICE QUOTED	TOTALS
163	2.00	EA	0159 - F225-60R18 HWY. Firestone Champion Fuel Fighter #015301	\$74.70	\$149.40
164	2.00	EA	0160 - LT 235-65R16 10 PLY HWY. Firestone Transforce CV #004709	\$101.76	\$203.52
165	2.00	EA	0161 - LT 235-80R17 HWY Firestone Transforce HT2 #002766	\$123.58	\$247.16
166	2.00	EA	0162 - 13-5.00-6 TURF Deestone D265 #DS7021	\$11.00	\$22.00
167	2.00	EA	0163 - 20-10-10 TURF OTR Wheel Engineering #T201010006	\$32.14	\$64.28
168	2.00	EA	0164 - 12-16.5 TURF (MIGHTY MOW) Galaxy Mighty Mow #GAL135264	\$307.75	\$615.50
169	2.00	EA	0165 - 12.5-18 R4 Galaxy Super Ind Lug R4 #GAL201289	\$255.65	\$511.30
170	2.00	EA	0166 - 15.5-60-18 R4	\$368.45	\$736.90
171	100.00	EA	0167 - DEQ CHARGE (NOT FOR BIDDING PURPOSES)	\$2.25 \$5.00	\$225.00 \$500.00
172	200.00	EA	0168 - TIRE FEE (WASTE) MEDIUM TRUCK TIRES DISPOSAL FEE FOR TIRES WEIGHING ONE HUNDRED POUNDS OR MORE AND NORMALLY USED ON SEMI-TRAILER, TRUCK-TRACTOR, SEMI-TRAILER COMBINATION OR OTHER LIKE VEHICLES USED PRIMARILY TO COMMERCIALLY TRANSPORT PERSONS OR PROPERTY ON THE ROADS OF THIS STATE OR ANY OTHER VEHICLE REGULARLY USED ON THE ROADS OF THE STATE.	\$5.00	\$1,000.00
173	200.00	EA	0169 - TIRE FEE (WASTE) PASSENGER, LIGHT TRUCK AND SMALL FARM TIRE DISPOSAL FEE FOR TIRES WEIGHING LESS THAN ONE HUNDRED POUNDS AND NORMALLY USED ON AUTOMOBILES, PICK-UP TRUCKS, SPORT UTILITY VEHICLES, FRONT STEER TRACTORS AND FARM IMPLEMENT SERVICE VEHICLES.	\$2.25	\$450.00
174	50.00	EA	0170 - TIRE FEE (WASTE) OFF ROAD TIRE DISPOSAL FEE FOR TIRES	\$10.00	\$500.00

DATE: 3/19/2019

Page 19

INVITATION TO BID FROM JEFFERSON PARISH - continued

BID NO.: 50-00125906

SEALED BID

ITEM NUMBER	QUANTITY	U/M	DESCRIPTION OF ARTICLES	UNIT PRICE QUOTED	TOTALS
1			<p>WEIGHING ONE HUNDRED POUNDS OR MORE AND ARE NORMALLY USED ON OFF-ROAD VEHICLES.</p> <p>State of Louisiana required the following transportation fee to be paid on tires: Passenger/Light Truck: \$1.50 Medium Truck: \$5.00 OTR: \$100.00</p>		

Non-Public Works Bid Affidavit Instructions

- Affidavit is supplied as a courtesy to Affiants, but it is the responsibility of the affiant to insure the affidavit they submit to Jefferson Parish complies, in both form and content, with federal, state and parish laws.
- Affidavit must be signed by an authorized representative of the entity or the affidavit will not be accepted.
- Affidavit must be notarized or the affidavit will not be accepted.
- Notary must sign name, print name, and include bar/notary number, or the affidavit will not be accepted.
- Affiant **MUST** select either A or B when required or the affidavit will not be accepted.
- Affiants who select choice A must include an attachment or the affidavit will not be accepted.
- If both choice A and B are selected, the affidavit will not be accepted.
- Affidavit marked N/A will not be accepted.
- It is the responsibility of the Affiant to submit a new affidavit if any additional campaign contributions are made after the affidavit is executed but prior to the time the council acts on the matter.

Instruction sheet may be omitted when submitting the affidavit

Non-Public Works Bid

AFFIDAVIT

STATE OF Mississippi

PARISH/COUNTY OF Marion

BEFORE ME, the undersigned authority, personally came and appeared: Richard
Conwill, (Affiant) who after being by me duly sworn, deposed and said that
he/she is the fully authorized Director of Government Sales of Southern Tire Mart, LLC (Entity),
the party who submitted a bid in response to Bid Number 50-00125906, to the Parish of
Jefferson.

Affiant further said:

Campaign Contribution Disclosures

**(Choose A or B, if option A is indicated please include the required
attachment):**

Choice A _____ Attached hereto is a list of all campaign contributions, including
the date and amount of each contribution, made to current or
former elected officials of the Parish of Jefferson by Entity,
Affiant, and/or officers, directors and owners, including
employees, owning 25% or more of the Entity during the two-year
period immediately preceding the date of this affidavit or the
current term of the elected official, whichever is greater. Further,
Entity, Affiant, and/or Entity Owners have not made any
contributions to or in support of current or former members of the
Jefferson Parish Council or the Jefferson Parish President through
or in the name of another person or legal entity, either directly or
indirectly.

Choice B ✓ there are **NO** campaign contributions made which would require
disclosure under Choice A of this section.

Debt Disclosures

(Choose A or B, if option A is indicated please include the required attachment):

Choice A _____ Attached hereto is a list of all debts owed by the affiant to any elected or appointed official of the Parish of Jefferson, and any and all debts owed by any elected or appointed official of the Parish to the Affiant.

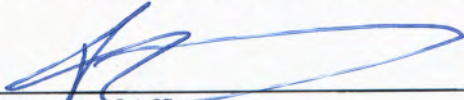
Choice B ✓ There are NO debts which would require disclosure under Choice A of this section.

Affiant further said:

That Affiant has employed no person, corporation, firm, association, or other organization, either directly or indirectly, to secure the public contract under which he received payment, other than persons regularly employed by the Affiant whose services in connection with the construction, alteration or demolition of the public building or project or in securing the public contract were in the regular course of their duties for Affiant; and

[The remainder of this page is intentionally left blank.]

That no part of the contract price received by Affiant was paid or will be paid to any person, corporation, firm, association, or other organization for soliciting the contract, other than the payment of their normal compensation to persons regularly employed by the Affiant whose services in connection with the construction, alteration or demolition of the public building or project were in the regular course of their duties for Affiant.

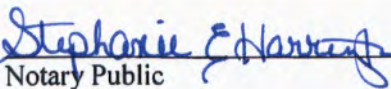


Signature of Affiant

Richard Conwill

Printed Name of Affiant

SWORN AND SUBSCRIBED TO BEFORE ME
ON THE 28 DAY OF March, 2019.



Notary Public

Stephanie E. Harrington

Printed Name of Notary

94957

Notary/Bar Roll Number

My commission expires 1/6/2022.



CORPORATE RESOLUTION

EXCERPT FROM MINUTES OF MEETING OF THE BOARD OF DIRECTORS OF
Southern Tire Mart, LLC

INCORPORATED.

AT THE MEETING OF DIRECTORS OF Southern Tire Mart, LLC
INCORPORATED, DULY NOTICED AND HELD ON 04/01/2019,
A QUORUM BEING THERE PRESENT, ON MOTION DULY MADE AND SECONDED. IT
WAS:

RESOLVED THAT Richard Conwill, BE AND IS HEREBY
APPOINTED, CONSTITUTED AND DESIGNATED AS AGENT AND ATTORNEY-IN-
FACT OF THE CORPORATION WITH FULL POWER AND AUTHORITY TO ACT ON
BEHALF OF THIS CORPORATION IN ALL NEGOTIATIONS, BIDDING, CONCERNS
AND TRANSACTIONS WITH THE PARISH OF JEFFERSON OR ANY OF ITS AGENCIES,
DEPARTMENTS, EMPLOYEES OR AGENTS, INCLUDING BUT NOT LIMITED TO, THE
EXECUTION OF ALL BIDS, PAPERS, DOCUMENTS, AFFIDAVITS, BONDS, SURETIES,
CONTRACTS AND ACTS AND TO RECEIVE ALL PURCHASE ORDERS AND NOTICES
ISSUED PURSUANT TO THE PROVISIONS OF ANY SUCH BID OR CONTRACT, THIS
CORPORATION HEREBY RATIFYING, APPROVING, CONFIRMING, AND ACCEPTING
EACH AND EVERY SUCH ACT PERFORMED BY SAID AGENT AND ATTORNEY-IN-
FACT.

I HEREBY CERTIFY THE FOREGOING TO BE
A TRUE AND CORRECT COPY OF AN
EXCERPT OF THE MINUTES OF THE ABOVE
DATED MEETING OF THE BOARD OF
DIRECTORS OF SAID CORPORATION, AND
THE SAME HAS NOT BEEN REVOKED OR
RESCINDED.



SECRETARY-TREASURER

03/28/2019

DATE

STANDARD INSURANCE REQUIREMENTS FOR BIDDING PURPOSES

All required insurance under this bid shall conform to Jefferson Parish Resolution No. 113646 or No. 113647, as applicable. Contractors may not commence any work under any ensuing contract unless and until all required insurance and associated evidentiary requirements thereto have been met, along with any additional specifications contained in the **Invitation to Bid**. Except as where otherwise precluded by law, the Parish Attorney or his designee, with the concurrence of the Director of Risk Management or his designee, may agree on a case-by-case basis, to deviate from Jefferson Parish's standard insurance requirements, as provided in this Section. Vendors requesting deviation therefrom shall submit such requests in writing, along with compelling substantiation, to the Purchasing Department prior to the bid's due date. Any changes to the insurance requirements will be reflected in the bid specifications and addenda. Prior to contract execution and at all times thereafter during the term of such contract, contractors must provide and continuously maintain all coverages as required by the foregoing Resolutions, and the contract documents. Failure to do so shall be grounds for suspension, discontinuation or termination of the contract.

For bidding purposes, bidders must submit with bid submission a current (valid) insurance certificate evidencing the required coverages. Failure to comply will cause bid to be rejected. The current insurance certificate will be used for proof of insurance at time of evaluation. Thereafter, and prior to contract execution, the low bidder will be required to provide final insurance certificates to the Parish which shall name **the Jefferson Parish, its Districts Departments and Agencies under the direction of the Parish President and the Parish Council** as additional insureds regarding negligence by the contractor for the Commercial General Liability, Workmen's Compensation Insurance and the Comprehensive Automobile Liability policies. Additionally, said certificates should reflect the name of the Parish Department receiving goods and services and reference the respective Jefferson Parish bid number.

JEFFERSON PARISH REQUIRED STANDARD INSURANCE

☒ WORKER'S COMPENSATION INSURANCE

As required by Louisiana State Statute, exception; Employer's Liability, Section B shall be \$1,000,000 per occurrence when Work is to be over water and involves maritime exposures to cover all employees not covered under the State Worker's Compensation Act, otherwise this limit shall be no less than \$500,000 per occurrence.

Note: If your company is not required by law to carry workmen's compensation insurance, i.e. not a Louisiana company, sole employee of the company, then bidders must request a workmen's compensation insurance declaration affidavit prior to the bid opening date. This insurance declaration affidavit must be fully completed, signed, properly notarized and submitted with the bid. A scanned copy may be submitted with the bid; however, the successful bidder must submit the original affidavit in its original format and without material alteration upon contract execution. Failure to comply will result in the bid submission being

rejected as non-responsive. The Parish reserves the right to award bid to the next lowest responsive and responsible bidder in this event.

☒ **COMMERCIAL GENERAL LIABILITY**

Shall provide limits not less than the following: \$1,000,000.00 Combined Single Limit per Occurrence for bodily injury and property damage.

☒ **COMPREHENSIVE AUTOMOBILE LIABILITY**

Bodily injury liability \$1,000,000.00 each person; \$1,000,000.00 each occurrence.
Property Damage Liability \$1,000,000.00 each occurrence.

Note: This category may be omitted if bidders do not/will not utilize company vehicles for the project or do not possess company vehicles. Bidder must request an automobile insurance declaration affidavit prior to the bid opening date. This insurance declaration affidavit must be fully completed, signed, properly notarized and submitted with the bid. A scanned copy of the completed, signed and properly notarized affidavit may be submitted with the bid; however, the successful bidder must submit the original affidavit in its original format and without material alteration upon contract execution. Failure to comply will result in the bid submission being rejected as non-responsive. The Parish reserves the right to award bid to the next lowest responsive and responsible bidder in this event.

DEDUCTIBLES

No insurance required shall include a deductible not greater than \$10,000.00. The cost of the deductible shall be borne by the contractor.

NOTE: If the vendor requires a change in deductibles, the request must be submitted in writing to the Purchasing Department prior to the due date of the bid. Such request shall be reviewed by the Parish Attorney's Office with the concurrence of the Director of Risk Management.

UMBRELLA LIABILITY COVERAGE

An umbrella policy or excess may be used to meet minimum requirements.

FOR CONSTRUCTION AND RENOVATION PROJECTS:

The following are required unless otherwise specified in the bid. Such insurance is due upon contract execution.

1) **OWNER'S PROTECTIVE LIABILITY**

To be for the same limits of liability for bodily injury and property damage liability established for commercial general liability.

2) **BUILDER'S RISK INSURANCE**

The contractor shall maintain Builder's Risk Insurance at his own expense to insure both the owner (Parish of Jefferson) and contractor as their interest may appear.



SOUTTIR-02

H WILLIAMSON

CERTIFICATE OF LIABILITY INSURANCE

DATE (MM/DD/YYYY)

1/30/2019

THIS CERTIFICATE IS ISSUED AS A MATTER OF INFORMATION ONLY AND CONFERS NO RIGHTS UPON THE CERTIFICATE HOLDER. THIS CERTIFICATE DOES NOT AFFIRMATIVELY OR NEGATIVELY AMEND, EXTEND OR ALTER THE COVERAGE AFFORDED BY THE POLICIES BELOW. THIS CERTIFICATE OF INSURANCE DOES NOT CONSTITUTE A CONTRACT BETWEEN THE ISSUING INSURER(S), AUTHORIZED REPRESENTATIVE OR PRODUCER, AND THE CERTIFICATE HOLDER.

IMPORTANT: If the certificate holder is an ADDITIONAL INSURED, the policy(ies) must have ADDITIONAL INSURED provisions or be endorsed. If SUBROGATION IS WAIVED, subject to the terms and conditions of the policy, certain policies may require an endorsement. A statement on this certificate does not confer rights to the certificate holder in lieu of such endorsement(s).

PRODUCER Southern Insurance Group, LLC 418 Sumrall Road, Suite 5 Columbia, MS 39429		CONTACT NAME: Heather Williamson PHONE (A/C, No, Ext): (601) 736-1086 E-MAIL ADDRESS: hwilliamson@sigins.com FAX (A/C, No): (601) 861-4889	
		INSURER(S) AFFORDING COVERAGE	
		INSURER A: Liberty Mutual Fire Insurance Company	
		INSURER B: Axis Insurance Company	
		INSURER C: Liberty Insurance Corporation	
		INSURER D:	
		INSURER E:	
		INSURER F:	

COVERAGES

CERTIFICATE NUMBER:

REVISION NUMBER:

THIS IS TO CERTIFY THAT THE POLICIES OF INSURANCE LISTED BELOW HAVE BEEN ISSUED TO THE INSURED NAMED ABOVE FOR THE POLICY PERIOD INDICATED. NOTWITHSTANDING ANY REQUIREMENT, TERM OR CONDITION OF ANY CONTRACT OR OTHER DOCUMENT WITH RESPECT TO WHICH THIS CERTIFICATE MAY BE ISSUED OR MAY PERTAIN, THE INSURANCE AFFORDED BY THE POLICIES DESCRIBED HEREIN IS SUBJECT TO ALL THE TERMS, EXCLUSIONS AND CONDITIONS OF SUCH POLICIES. LIMITS SHOWN MAY HAVE BEEN REDUCED BY PAID CLAIMS.

INSR LTR	TYPE OF INSURANCE	ADDL INSD	SUBR WVD	POLICY NUMBER	POLICY EFF (MM/DD/YYYY)	POLICY EXP (MM/DD/YYYY)	LIMITS
A	<input checked="" type="checkbox"/> COMMERCIAL GENERAL LIABILITY <input type="checkbox"/> CLAIMS-MADE <input checked="" type="checkbox"/> OCCUR GEN'L AGGREGATE LIMIT APPLIES PER: <input checked="" type="checkbox"/> POLICY <input checked="" type="checkbox"/> PROJECT <input type="checkbox"/> LOC OTHER:	X	X	TB2-695-449285-048	9/1/2018	9/1/2019	EACH OCCURRENCE \$ 2,000,000 DAMAGE TO RENTED PREMISES (Ea occurrence) \$ 300,000 MED EXP (Any one person) \$ 10,000 PERSONAL & ADV INJURY \$ 2,000,000 GENERAL AGGREGATE \$ 2,000,000 PRODUCTS - COMP/OP AGG \$ 2,000,000
A	<input checked="" type="checkbox"/> AUTOMOBILE LIABILITY <input checked="" type="checkbox"/> ANY AUTO OWNED AUTOS ONLY <input type="checkbox"/> SCHEDULED AUTOS <input type="checkbox"/> HIRED AUTOS ONLY <input type="checkbox"/> NON-OWNED AUTOS ONLY	X	X	AS2-695-449285-038	9/1/2018	9/1/2019	COMBINED SINGLE LIMIT (Ea accident) \$ 2,000,000 BODILY INJURY (Per person) \$ BODILY INJURY (Per accident) \$ PROPERTY DAMAGE (Per accident) \$
B	<input type="checkbox"/> UMBRELLA LIAB <input checked="" type="checkbox"/> OCCUR <input checked="" type="checkbox"/> EXCESS LIAB <input type="checkbox"/> CLAIMS-MADE DED RETENTION \$	X	X	MAU741971/01/2018	9/1/2018	9/1/2019	EACH OCCURRENCE \$ 4,000,000 AGGREGATE \$ 4,000,000
C	WORKERS COMPENSATION AND EMPLOYERS' LIABILITY ANY PROPRIETOR/PARTNER/EXECUTIVE OFFICER/MEMBER EXCLUDED? (Mandatory in NH) If yes, describe under DESCRIPTION OF OPERATIONS below	Y/N N	N/A	WA7-69D-449285-028	5/1/2018	5/1/2019	<input checked="" type="checkbox"/> PER STATUTE <input type="checkbox"/> OTH-ER E.L. EACH ACCIDENT \$ 1,000,000 E.L. DISEASE - EA EMPLOYEE \$ 1,000,000 E.L. DISEASE - POLICY LIMIT \$ 1,000,000

DESCRIPTION OF OPERATIONS / LOCATIONS / VEHICLES (ACORD 101, Additional Remarks Schedule, may be attached if more space is required)

Certificate Holder is Additional Insured on all policies and provided a Waiver of Subrogation on all policies when required by written contract executed prior to a loss. A 30 Day Notice of Cancellation applies except for Non-Payment of premium. Coverages on all liability policies are Primary and Non-Contributory. Contractual Liability coverage is afforded on General Liability policy. Excess Policies are Follow Form in regards to Auto Liability, General Liability, and Employers Liability.

CERTIFICATE HOLDER

CANCELLATION

Jefferson Parish
910 3rd Street
Gretna, LA 70053

SHOULD ANY OF THE ABOVE DESCRIBED POLICIES BE CANCELLED BEFORE THE EXPIRATION DATE THEREOF, NOTICE WILL BE DELIVERED IN ACCORDANCE WITH THE POLICY PROVISIONS.

AUTHORIZED REPRESENTATIVE

Heather Williamson



Southern Tire Mart Corporate Office
800 Highway 98 Bypass
Columbia, MS 39429

(601) 424-3200
www.stmtires.com

LIMITED POWER OF ATTORNEY

We, **Thomas M. Duff** and **James E. Duff**, authorized and designated as managing members of Southern Tire Mart, LLC, a Mississippi Limited Liability Company, does hereby appoint employee, **Richard Conwill**, of 800 Highway 98, Columbia, MS, as attorney in fact, *for the sole purposes of executing bids and signing contracts for services to be rendered and products to be sold, by said company.* This power is limited solely for that purpose and was in full force and effective on **June 1, 2017**.

Witness, the signature of the company, duly executed, with full authority, by Thomas M. Duff and James E. Duff, authorized and designated as managing members of said company on this the **1st** day of **June 2017**.

Southern Tire Mart, LLC

By: _____

Thomas M. Duff

James E. Duff

STATE OF MISSISSIPPI

COUNTY OF Marion

Personally appeared before me, the undersigned authority in and for the said county and state, on this **1st** day of **June 2017**, within my jurisdiction, the within named Thomas M. Duff and James E. Duff who acknowledge that (he)(she)(they) executed the above and foregoing instrument.

Shay Speights (NOTARY PUBLIC)
My commission expires: 6/23/17



Solutions Provider to the Transportation Industry

#24



FIRESTONE TRANSFORCE AT2

Part Number : 000187

UPC Number : 00092971273545

Type : All-Terrain

Max Load : 3197 lbs.

Load Range : E

Overall Diameter : 31.70

InchSize : LT265/70R17

Service : 121R

Sidewall : OWL

The Transforce AT2 is Firestones On-/Off-Road Commercial Traction light truck tire developed for the drivers of multipurpose full-sized pickups vans sport utility and commercial vehicles looking for heavy-duty light truck tires that can combine traction on the highway as well as at work jobsites and recreation areas.

Manufacturer photo shown may vary slightly from actual product.

#6

AG-DURA – 11L-16 E TL 4105 I-1



Bias Agricultural I-1 Low Section Farm Implement tire Suitable for Both On and Off-Road Applications.

FEATURES

- Offers high load capacity

BENEFITS

- Minimum soil compaction



Specifications

Manufacturer Item Number	104124
Make	AG-DURA
Model	4105 I-1
Display Name	11L-16 E TL 4105 I-1
TRA Code	I-1
Rim Size	16
Inch Width	11
Ply Rating	10



FD663

Drive Tire

- Tie bars control movement of tread blocks to help minimize irregular wear tendencies, leading to long service life.
- Open-shoulder design helps to provide traction and grip in mud and snow.
- Four full-width steel belts help casing durability and enhance retreadability by combating casing penetration.
- Cap/base compounding combines a slow-wearing cap compound with a cool-running base that shields the casing from damaging heat to enhance retreadability.

Recommended Application

A drive tire recommended for high traction and high-scrub drive axle applications in:

**Long Haul Service / Regional Haul Service
Pickup & Delivery Service**

Replaces: Hankook: DH06, Z35A
Yokohama: SY767, TY303

TECHNICAL DATA

Tire Size	Load Range	Material Number	Weight (lbs.)	Meas. Rim	Overall Diam.	Overall Width	Static Loaded Radius	Overall Width (Loaded)	Revs Per Mile	Tread Depth (32")	Max. Tire Load (Single)		Max. Tire Load (Dual)		Max. Speed (MPH)
											Kg/kPa	Lbs/PSI	Kg/kPa	Lbs/PSI	
FD663															
10R22.5	F	281-034	110	7.50	40.5	9.8	18.9	10.8	513	25	2360@690	5205@100	2240@690	4940@100	75
11R22.5	G	281-042	125	8.25	41.9	10.7	19.5	11.8	496	26	2800@720	6175@105	2650@720	5840@105	75
11R22.5	H	211-206	125	8.25	41.9	10.8	19.5	11.9	496	26	3000@830	6610@120	2725@830	6005@120	75
12R22.5	H	151-009	154	9.00	43.0	11.6	20.0	12.6	483	26	3350@830	7390@120	3075@830	6780@120	75
11R24.5	G	281-069	133	8.25	43.9	10.7	20.5	11.8	473	26	3000@720	6610@105	2725@720	6005@105	75
11R24.5	H	293-733	134	8.25	43.9	10.7	20.5	11.8	473	26	3250@830	7160@120	3000@830	6610@120	75
295/75R22.5	G	281-050	117	8.25	40.6	11.1	18.9	12.2	512	26	2800@760	6175@110	2575@760	5675@110	75
285/75R24.5	G	281-077	122	8.25	41.9	10.6	19.6	11.7	496	26	2800@760	6175@110	2575@760	5675@110	75

- All dimensions taken with tire on measuring rim.
- Loaded dimensions and RPM measured at maximum dual load.
- For load and inflation tables see pages 61 through 65.
- For minimum dual spacing and approved rim widths see page 44.
- For ply ratings see table on page 42.

Firestone tires and tubes are subject to an ongoing development program. Bridgestone Americas Tire Operations, LLC retains the right to amend specifications at any time without notice or obligations. Please refer to rim manufacturer's load and inflation limits. Never exceed rim manufacturer's limits without the consent of the component manufacturer.



FS561 Steer Tire

- Tread cap compound and solid shoulder ribs enhance resistance to maneuvering scrub, leading to increased tread life.
- Stone rejectors in center grooves help provide resistance to stone drilling and protect belts for enhanced casing durability.
- Stress relief sipes fight irregular wear by absorbing rib edge stresses in the footprint for long, even wear.
- Sidewall protector ribs help protect the casing from cuts, snags and abrasions due to curbing and impacts.
- Innovative sidewall design reduces overall weight to improve fuel efficiency without sacrificing durability.

Recommended Application

An all-position tire recommended for steer application in:
Regional Haul Service / Pickup & Delivery Service

NOT recommended for spread axle, heavy haul, high-scrub applications.

Replaces: BFGoodrich: ST230

Hankook: AH12

Yokohama: 108ZR, RY023

TECHNICAL DATA

Tire Size	Load Range	Material Number	Weight (lbs.)	Meas. Rim	Overall Diam.	Overall Width	Static Loaded Radius	Overall Width (Loaded)	Revs Per Mile	Tread Depth (32")	Max. Tire Load (Single)		Max. Tire Load (Dual)		Max. Speed (MPH)
											Kg/kPa	Lbs/PSI	Kg/kPa	Lbs/PSI	
FS561															
9R22.5	F	248-562	90	6.75	38.4	9	18	9.9	541	19	2060@720	4540@105	1950@720	4300@105	75
10R22.5	F	248-579	109	7.50	40.2	9.9	18.8	10.9	517	20	2360@690	5205@100	2240@690	4940@100	75
10R22.5	G	248-596	109	7.50	40.2	9.9	18.8	10.9	517	20	2575@790	5675@115	2430@790	5355@115	75
11R22.5	G	248-307	114	8.25	41.5	10.9	19.3	12	501	21	2800@720	6175@105	2650@720	5840@105	75
11R22.5	H	248-324	114	8.25	41.5	10.9	19.3	12	501	21	3000@830	6610@120	2725@830	6005@120	75
12R22.5	H	248-494	139	9.00	42.7	11.6	19.8	12.8	487	21	3350@830	7390@120	3075@830	6780@120	75
11R24.5	G	248-358	120	8.25	43.6	10.9	20.4	12	477	21	3000@720	6610@105	2725@720	6005@105	75
11R24.5	H	248-375	120	8.25	43.6	10.9	20.4	12	477	21	3250@830	7160@120	3000@830	6610@120	75
215/75R17.5	H	248-511	66	6.00	30.7	8.8	14.4	9.7	677	15	2180@830	4805@120	2060@830	4540@120	65
225/70R19.5	F	248-409	64	6.00	32.2	8.7	15.0	9.5	644	16	1650@660	3640@95	1550@660	3415@95	75
225/70R19.5	G	248-426	64	6.00	32.2	8.7	15.0	9.5	644	16	1800@760	3970@110	1700@760	3750@110	75
245/70R19.5	F	248-443	82	6.75	33.3	9.3	15.5	10.3	623	18	1850@660	4080@95	1750@660	3860@95	75
245/70R19.5	G	248-477	82	6.75	33.3	9.3	15.5	10.3	623	18	2060@760	4545@110	1985@760	4375@110	75
275/70R22.5	J	248-545	99	8.25	38.1	11.5	17.9	12.7	545	21	3150@900	6940@130	2900@900	6395@130	75
295/75R22.5	G	248-273	111	8.25	40.4	10.9	18.9	12	514	21	2800@760	6175@110	2575@760	5675@110	75
285/75R24.5	G	248-290	121	8.25	41.5	10.9	19.5	12	501	21	2800@760	6175@110	2575@760	5675@110	75

Firestone tires and tubes are subject to an ongoing development program. Bridgestone Americas Tire Operations, LLC retains the right to amend specifications at any time without notice or obligations. Please refer to rim manufacturer's load and inflation limits. Never exceed rim manufacturer's limits without the consent of the component manufacturer.



FD690 PLUS

Drive Tire

- Suitable for single- and tandem-axle drive radials.
- Solid shoulder design distributes weight and torque evenly to fight irregular wear.
- Solid shoulder and aggressive center lugs help to improve traction in wet or dry conditions for the life of the tread.
- Cap/base compounding combines a slow-wearing cap compound with a cool-running base that shields the casing from damaging heat to enhance retreadability.

Recommended Application

A drive tire recommended for tandem- and single-drive axle applications in:

**Long Haul Service / Regional Haul Service
Pickup & Delivery Service**

Replaces: Hankook: DL12, DL07
Yokohama: 703ZL, TY577

TECHNICAL DATA

Tire Size	Load Range	Material Number	Weight (lbs.)	Meas. Rim	Overall Diam.	Overall Width	Static Loaded Radius	Overall Width (Loaded)	Revs Per Mile	Tread Depth (32")	Max. Tire Load (Single)		Max. Tire Load (Dual)		Max. Speed (MPH)
											Kg/kPa	Lbs/PSI	Kg/kPa	Lbs/PSI	
FD690 PLUS															
11R22.5	G	006-504	122	8.25	42.1	10.8	19.6	11.8	493	29	2800@720	6175@105	2650@720	5840@105	75
11R24.5	G	006-506	137	8.25	44.0	10.7	20.5	11.8	472	29	3000@720	6610@105	2725@720	6005@105	75
225/70R19.5	F	186-675	70	6.00	32.3	8.5	15.0	9.4	643	19	1650@660	3640@95	1550@660	3415@95	75
225/70R19.5	G	227-074	70	6.00	32.3	8.5	15.0	9.4	643	19	1800@760	3970@110	1700@760	3750@110	75
245/70R19.5	G	006-510	79	6.75	33.5	9.1	15.5	10.0	620	20	2060@760	4545@110	1985@760	4375@110	75
295/75R22.5	G	006-6514	122	8.25	41.0	11.1	19.1	12.2	507	29	2800@760	6175@110	2575@760	5675@110	75
285/75R24.5	G	006-6516	128	8.25	42.2	10.9	19.8	11.9	492	29	2800@760	6175@110	2575@760	5675@110	75

- All dimensions taken with tire on measuring rim.
- Loaded dimensions and RPM measured at maximum dual load.
- For load and inflation tables see pages 61 through 65.
- For minimum dual spacing and approved rim widths see page 44.
- For ply ratings see table on page 42.

Firestone tires and tubes are subject to an ongoing development program. Bridgestone Americas Tire Operations, LLC retains the right to amend specifications at any time without notice or obligations. Please refer to rim manufacturer's load and inflation limits. Never exceed rim manufacturer's limits without the consent of the component manufacturer.

#43

RLB400



CLOSED SHOULDER DRIVE-POSITION TIRE

- Tighter tread block-to-void ratio helps keep the crown of the tire stable during rotation, leading to longer tread wear.
- Center sipes in the tread blocks help to grip the road surface, providing excellent traction and stability.
- Lug base design and groove bottom protectors aid in preventing debris from drilling into the casing.
- Full ³⁰/₃₂" tread depth provides exceptionally long wear across multiple applications.



PRODUCT CODE	TIRE SIZE	PLY RATING	LOAD RANGE	LOAD INDEX	SPEED SYMBOL	OVERALL DIAMETER (INCH)	SECTION WIDTH (INCH)	TREAD DEPTH (32NDS)	RIM	SINGLE MAX LOAD/ PRESSURE	DUAL MAX LOAD/ PRESSURE	STATIC LOAD RADIUS	REVS PER MILE	WEIGHT (LB)
1133481255	11R22.5	14	G	144/142	J	42.0	10.9	30	8.25	6175lb/105psi	5840lb/105psi	20.1	488	127
1133481256	11R22.5	16	H	148/145	J	42.0	10.9	30	8.25	6940lb/123psi	6390lb/123psi	20.1	488	130
1133489255	295/75R22.5	14	G	144/141	L	41.2	11.7	30	9.00	6175lb/110psi	5675lb/110psi	19.4	498	129
1133481455	11R24.5	14	G	146/143	L	43.9	10.9	30	8.25	6610lb/105psi	6005lb/105psi	21.1	466	139
1133481456	11R24.5	16	H	149/146	L	43.9	10.9	30	8.25	7160lb/120psi	6610lb/120psi	21.1	466	141
1133488455	285/75R24.5	14	G	144/141	L	42.1	11.0	30	8.25	6175lb/110psi	5675lb/110psi	19.8	485	131
1133480456	305/75R24.5	18	J	154/149	L	43.3	11.6	30	9.00	8267lb/123psi	7165lb/123psi	20.1	488	148



Line Haul



Work



Regional



All-Season/Terrain



Fuel Efficient (SmartWay[®])



Double Coin manufactures EPA SmartWay[®]-verified technologies



FS818

*On/Off-Highway
All-Position Wide Base Tire*

- Wide base design for higher payload and flotation so tires maintain grip and traction without digging into the ground.
- Four full-width steel belts combat tread squirm and enhance retreadability.
- Self-cleaning tread pattern provides high traction with stone rejector platforms in every groove for excellent durability.

Recommended Application

An all-position wide base tire recommended for steer, drive and trailer positions in on/off-highway service.

Replaces: BFGoodrich: ST565
Hankook: AM15

TECHNICAL DATA

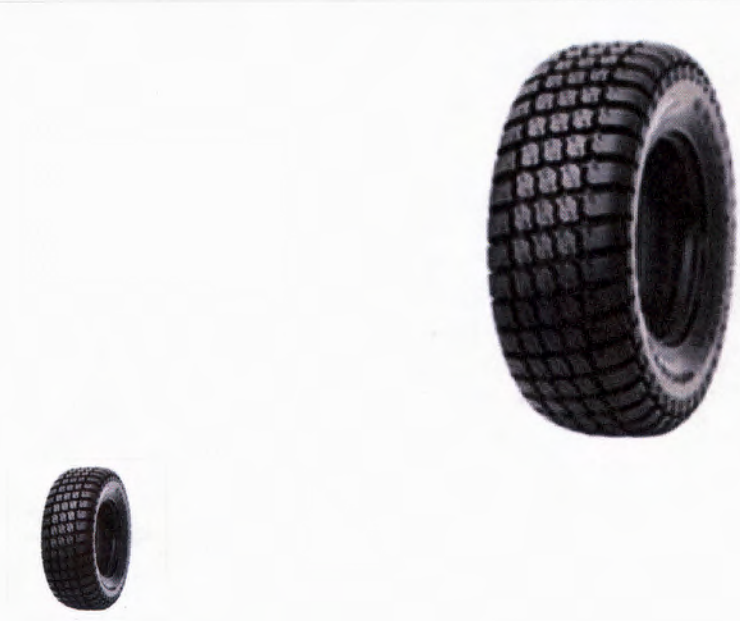
Tire Size	Load Range	Material Number	Weight (lbs.)	Meas. Rim	Overall Diam.	Overall Width	Static Loaded Radius	Overall Width (Loaded)	Revs Per Mile	Tread Depth (32")	Max. Tire Load (Single)		Max. Tire Load (Dual)		Max. Speed (MPH)
											Kg/kPa	Lbs/PSI	Kg/kPa	Lbs/PSI	
FS818															
385/65R22.5	J	247-780	172	12.25	42.9	15.1	19.8	16.6	484	23	9370@120	4250@830	—	—	68
425/65R22.5	L	241-235	194	12.25	44.8	16.1	20.6	17.7	463	23	11400@120	5150@830	—	—	68
445/65R22.5	L	247-797	214	13.00	46.0	17.5	21.1	19.2	452	24	12300@120	5600@830	—	—	68

- All dimensions taken with tire on measuring rim.
- Loaded dimensions and RPM measured at maximum dual load.
- For load and inflation tables see pages 61 through 65.
- For minimum dual spacing and approved rim widths see page 44.
- For ply ratings see table on page 42.

Firestone tires and tubes are subject to an ongoing development program. Bridgestone Americas Tire Operations, LLC retains the right to amend specifications at any time without notice or obligations. Please refer to rim manufacturer's load and inflation limits. Never exceed rim manufacturer's limits without the consent of the component manufacturer.

GALAXY — 12-16.5 B TL MIGHTY MOW R-3

email



GALAXY

Agricultural Bias Lawn & Garden/Turf R-3 tire. Works Exceptionally well on Mowers for Lawns, Parks, Golf Courses, Sports Grounds and Cemeteries.

FEATURES

- Engineered to provide superior flotation characteristics

BENEFITS

- A turf friendly tire that will not damage grass or roots

Specifications

Manufacturer Item Number

135262

Make

GALAXY

Model

MIGHTY MOW R-3

Display Name

12-16.5 B TL MIGHTY MOW R-3

TRA Code

R-3

Sidewall

BSW

Rim Size

16.5

Inch Width

12

Ply Rating

4



BRIDGESTONE
Your Journey, Our Passion

R180

All-Position Radial

- Five-rib tread pattern for even load distribution in any axle position.
- Multiple cross-rib sipes cut through water for a solid grip on wet roads.
- Four wide grooves to channel water out of footprint for superb traction.

Recommended Application

An all-position tire recommended for general use in:
Pickup & Delivery Service

Replaces: Goodyear: G114
Michelin: XZA

TECHNICAL DATA

Tire Size	Load Range	Material Number	Weight (lbs.)	Meas. Rim	Overall Diam.	Overall Width	Static Loaded Radius	Overall Width (Loaded)	Revs Per Mile	Tread Depth (32")	Max. Tire Load (Single)		Max. Tire Load (Dual)		Max. Speed (MPH)
											Kg/kPa	Lbs/PSI	Kg/kPa	Lbs/PSI	
R180															
9R17.5	G	272-914	64	6.75	33.1	9.1	15.4	10.0	628	14	1850@830	4080@120	1750@830	3860@120	75

- All dimensions taken with tire on measuring rim.
- Loaded dimensions and RPM measured at maximum dual load.
- For load and inflation tables see pages 91 through 96.
- For minimum dual spacing and approved rim widths see page 74.
- For ply ratings see table on page 72.



ALL-SEASON TOURING

Firestone

#58



CHAMPION™ WITH FUEL FIGHTER™ TECHNOLOGY

BUILT TO LAST A LONG TIME

FEATURES AND BENEFITS



All-season performance



70,000 mile limited treadwear warranty†



Fuel Fighter™ technology assists with rolling resistance, which helps with fuel economy

70000

Mile Limited Treadwear Warranty†

†Certain conditions and limitations apply. See a Bridgestone representative or warranty manual for details.

1 FUEL FIGHTER™ TECHNOLOGY

helps ensure fuel efficiency with new construction features optimized for low rolling resistance

2 OPTIMIZED TREAD PATTERN

offers dependable performance in wet, dry and wintry conditions

3 OPTIMIZED TREAD COMPOUND & FOOTPRINT

assists with traction in wet conditions



Firestone

CHAMPION
WITH FUEL FIGHTER™ TECHNOLOGY

BUILT FOR:  

TOP FITMENTS: Nissan Altima, Toyota Camry,
Honda Accord, Chrysler Town & Country, Honda Odyssey

TIRE TYPE: All-Season Touring

WARRANTY: 70,000 Mile Limited Treadwear Warranty, Gold Pledge Limited Warranty and 30-Day Buy & Try™ Guarantee†

GOLD PLEDGE



†Certain conditions and limitations apply. See a Bridgestone representative or warranty manual for details.

PERFORMANCE CHARACTERISTICS†

As compared to all other all-season touring, RFT, studdable winter, and studless ice and snow tires:



† Performance characteristics charts are designed as a general guideline to compare products within the same category of Bridgestone and Firestone products and are not intended to compare products outside of those categories or products for other manufacturers. Charts are based on comparing attributes of like tire types/categories and are not a reflection of performance testing data.

TIRE SPECIFICATIONS

Tire Size and Service Description	Load Range	Item Number	Sidewall Styling	Approved Rim Widths	Measuring Rim Widths	Overall Tire Diameter	Overall Section Width	Tread Depth (32nd)	Revs Per Mile	UTQG	Wt.
14" Rim Diameter											
185/60R14 82H		015063	BW	5.0-6.5	5.5	22.8	7.4	10	815	600 AA	16
15" Rim Diameter											
205/70R15 96T		014808	BW	5.0-7.0	6.0	26.3	8.2	11	791	600 AB	21
215/70R15 96T		014910	BW	5.5-7.0	6.5	26.9	8.7	11	775	600 AB	24
175/65R15 84H		015046	BW	5.0-6.0	5.0	24.0	7.0	11	869	600 AA	16
185/65R15 88H		015080	BW	5.0-6.5	5.5	24.5	7.4	11	852	600 AA	18
195/65R15 91H		015131	BW	5.5-7.0	6.0	25.0	7.9	10	833	600 AA	18
205/65R15 94H		015199	BW	5.5-7.5	6.0	25.5	8.2	10	818	600 AA	19
185/60R15 84T		014791	BW	5.0-6.5	5.5	23.7	7.4	10	878	600 AB	17
195/60R15 88H		015114	BW	5.5-7.0	6.0	24.2	7.9	10	860	600 AA	17
205/60R15 91H		015165	BW	5.5-7.5	6.0	24.7	8.2	10	844	600 AA	19
215/60R15 94H		015233	BW	6.0-7.5	6.5	25.2	8.7	10	828	600 AA	20
185/55R15 82H		015386	BW	5.0-6.5	6.0	23.0	7.6	10	905	600 AA	16
195/55R15 85H		015403	BW	5.5-7.0	6.0	23.4	7.9	10	889	600 AA	17
16" Rim Diameter											
225/70R16 103T		014961	BW	6.0-7.5	6.5	28.4	9.0	10	733	600 AB	27
205/65R16 95H		023240	BW	5.5-7.5	6.0	26.5	8.2	10	787	600 AA	20
215/65R16 98T		014859	BW	6.0-7.5	6.5	27.0	8.7	10	771	600 AB	22
225/65R16 100H		015335	BW	6.0-8.0	6.5	27.5	9.0	10	758	600 AA	25
235/65R16 103T		014995	BW	6.5-8.5	7.0	28.0	9.5	10	743	600 AB	25
205/60R16 92H		015182	BW	5.5-7.5	6.0	25.7	8.2	10	812	600 AA	20
215/60R16 95T		015029	BW	6.0-7.5	6.5	26.1	8.7	10	797	600 AB	21
215/60R16 95V		015369	BW	6.0-7.5	6.5	26.1	8.7	10	797	600 AA	21
225/60R16 98H		015607	BW	6.0-8.0	6.5	26.6	9.0	10	783	600 AA	23
235/60R16 100T		014978	BW	6.5-8.5	7.0	27.1	9.5	10	769	600 AB	25
195/55R16 87H		015097	BW	5.5-7.0	6.0	24.4	7.9	10	853	600 AA	17
205/55R16 91H		015148	BW	5.5-7.5	6.5	24.9	8.4	10	837	600 AA	19
215/55R16 93H		015488	BW	6.0-7.5	7.0	25.3	8.9	10	824	600 AA	21
195/50R16 84H		000107	BW	5.5-7.0	6.0	23.7	7.9	10	879	600 AA	17
205/50R16 87H		015420	BW	5.5-7.5	6.5	24.1	8.4	10	865	600 AA	18
17" Rim Diameter											
215/65R17 99T		014876	BW	6.0-7.5	6.5	28.0	8.7	10	743	600 AB	24
225/65R17 102T		014944	BW	6.0-8.0	6.5	28.5	9.0	10	731	600 AB	25
235/65R17 104T		015012	BW	6.5-8.5	7.0	29.1	9.5	10	717	600 AB	27
215/60R17 96T		014825	BW	6.0-7.5	6.5	27.2	8.7	10	787	600 AB	23
225/60R17 99H	S	015284	BW	6.0-8.0	6.5	27.6	9.0	10	754	600 AA	27
235/60R17 102H		015352	BW	6.5-8.5	7.0	28.1	9.5	10	741	600 AA	25
215/55R17 94V		015505	BW	6.0-7.5	7.0	26.3	8.9	10	792	600 AA	21
225/55R17 97V		015590	BW	6.0-8.0	7.0	26.8	9.2	10	778	600 AA	22
235/55R17 99H		015641	BW	6.5-8.5	7.5	27.2	9.7	10	767	600 AA	25
205/50R17 89V		015437	BW	5.5-7.5	6.5	25.1	8.4	10	829	600 AA	19
215/50R17 95V	XL	015471	BW	6.0-7.5	7.0	25.5	8.9	10	817	600 AA	21
225/50R17 94V		015556	BW	6.0-8.0	7.0	25.9	9.2	10	804	600 AA	22
215/45R17 87V		015454	BW	7.0-8.0	7.0	24.7	8.4	10	845	600 AA	20
225/45R17 91V		015522	BW	7.0-8.5	7.5	25.0	8.9	10	835	600 AA	21
235/45R17 97H	XL	015624	BW	7.5-9.0	8.0	25.4	9.3	10	822	600 AA	24
18" Rim Diameter											
225/60R18 100H		015301	BW	6.0-8.0	6.5	28.6	9.0	10	728	600 AA	26
215/55R18 95H		015216	BW	6.0-7.5	7.0	27.3	8.9	10	764	600 AA	21
235/55R18 100V		015658	BW	6.5-8.5	7.5	28.2	9.7	10	740	600 AA	27
225/50R18 95T		014927	BW	6.0-8.0	7.0	26.9	9.2	10	775	600 AB	25
225/45R18 95V	XL	015539	BW	7.0-8.5	7.5	25.9	8.9	10	803	600 AA	24
235/45R18 94V		001814	BW	7.5-9.0	8.0	26.3	9.3	10	791	600 AA	24

TIRE SPECIFICATIONS LEGEND

* OEM Tire	OWL Outline White Letter	~ Pinned for #12 Stud Sizes
^ MOE (Mercedes Exclusive)	WS White Stripe	f Pinned for #15 Stud Sizes
^ RFT (Run Flat Tire)	XL Extra Load (XL)	** Pinned for #16 Stud Sizes
BW Blackwall	◆ Pinned for #11 Stud Sizes	*** Pinned for #17 Stud Sizes

#147



A QUALITY TIRE AT A GREAT VALUE FROM A BRAND YOU CAN TRUST

- A tire you can count on
- All-season performance
- Built to last
- Up to 65,000 mile limited treadwear warranty*

*55,000 mile limited treadwear warranty applies to certain sizes. Certain limitations and restrictions apply. See warranty manual for details.

Tire Size: P255/65R18 ALL-SEASON

Load Rating: 109 - 2271 lbs (1030 kg) per tire

Speed Rating: S - 112 mph (180 kph)

Sidewall: Black Sidewall

Warranty: 55000 Miles

UTQG: 480 A B

Product Code: 003072