



CENTRALBIDDING
FROM CENTRAL AUCTION HOUSE

5000123089 A purchase of light fixtures for the Department of Recreation
Jefferson Parish Government

Project documents obtained from www.CentralBidding.com

14-May-2018 02:02:12 PM

DATE: 5/14/2018

INVITATION TO BID
THIS IS NOT AN ORDER

Page: 4

BID NO.: 50-00123089

JEFFERSON PARISH

PURCHASING DEPARTMENT
P.O. BOX 9
GRETNA, LA. 70054-0009
504-364-2678

VENDOR:

BUYER: DABRAHAM

As per LSA-RS 47:301 et seq., all governmental bodies are excluded from payment of sales taxes to any Louisiana taxing body. Quotations shall be based on F.O.B. Agency warehouse or jobsite, anywhere within the Parish as designated by the Purchasing Department.

JEFFERSON PARISH reserves the right to cancel all or any part of an order if not shipped promptly. No charges will be allowed for parking or cartage unless specified in quotation. The order must not be filled at a higher price than quoted. JEFFERSON PARISH reserves the right to cancel at any time and for any reason by issuing a THIRTY (30) day written notice to the contractor.

JEFFERSON PARISH is expecting all products to be new and all work to be done in workman-like manner, according to standard practices. Any deviations or alteration from the specifications must be indicated on the bid form for each item and upon request, product data for same must be submitted by the time specified by the Purchasing Department.

DELIVERY: FOB JEFFERSON PARISH

INDICATE DELIVERY DATE ON EQUIPMENT AND SUPPLIES

INDICATE STARTING TIME (IN DAYS) FOR CONSTRUCTION WORK

INDICATE COMPLETION TIME (IN DAYS) FOR CONSTRUCTION WORK

*4-6 weeks
A20
per the mfg.*

In the event that addenda are issued with this bid, bidders MUST acknowledge all addenda on the bid form. Bidder must acknowledge receipt of an addendum on the bid form as indicated. Failure to acknowledge any addendum on the bid form will result in bid rejection.

Acknowledge Receipt of Addenda: NUMBER: _____
NUMBER: _____
NUMBER: _____
NUMBER: _____

LOUISIANA CONTRACTOR'S LICENSE NO.: (if applicable) _____

*** ALL BIDDERS MUST COMPLETE SECTION BELOW ***	
FIRM NAME: <i>MORNINGSTAR Ind. Inc.</i>	
SIGNATURE: (Must be signed here)	TITLE: <i>Sales Rep.</i>
PRINT OR TYPE NAME: <i>AL DAVIS</i>	
ADDRESS: <i>819 SW Federal Hwy. suite 205</i>	
CITY, STATE: <i>STUART, FL.</i>	ZIP: <i>34994</i>
TELEPHONE: <i>800-440-6050</i>	FAX: <i>772-334-7979</i>
EMAIL ADDRESS: <i>al@morningstarusa.com</i>	

TOTAL PRICE OF ALL BID ITEMS: \$ *2572.00*

DATE: 5/14/2018

Page: 5

INVITATION TO BID FROM JEFFERSON PARISH - continued

BID NO.: 50-00123089

SEALED BID

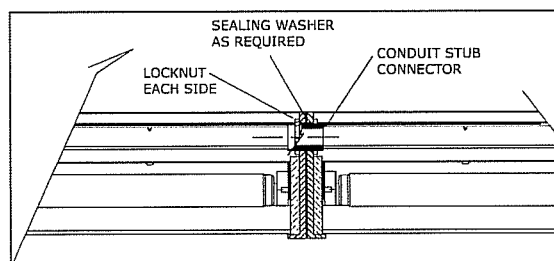
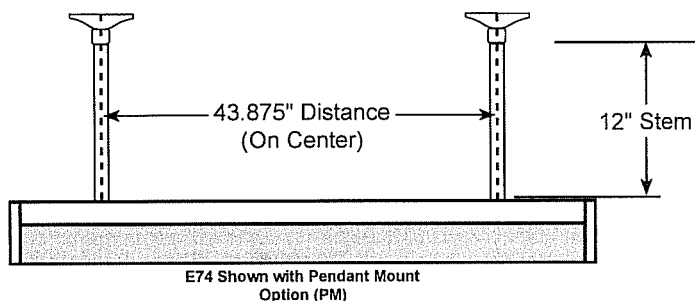
ITEM NUMBER	QUANTITY	U/M	DESCRIPTION OF ARTICLES	UNIT PRICE QUOTED	TOTALS
1	7.00	EA	A purchase of indoor light fixtures for the Department of Recreation 0010 E74-CFP-LED50-CT4-UNV-EBX-WHT Indoor light fixtures	344. ⁰⁰	2408. ⁰⁰
2	1.00	EA	0020 Freight (Estimated) as of 05/14/18	165. ⁰⁰	165. ⁰⁰
				TOTAL	2573. ⁰⁰



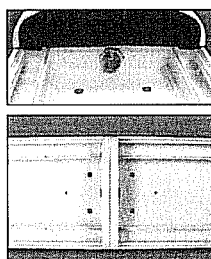
High Abuse Bi-Pin FL and LED Collection

E71 • E72 • E73 • E74 ✓

High Abuse Ceiling LED Luminaire

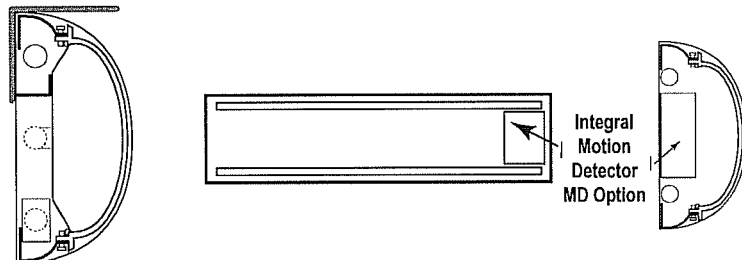


Instructions for Joining Units for Tandem Mount



Tandem Mount [TM]

Shown with WMSH Option



Catalog Number

Project Name & Location

Type

order example:

E74-CFP-LED50-CT4-UNV-WHT ✓

OPTIONS

8DIM	LED Dimming Forward Phase (TRIAC)
13DIM	LED Step Dimming (Consult Factory)
CA	Aluminum Conduit Adapter/Back Box *Required for Emergency Battery Options. Consult Factory for Specific Criteria.
DLC	Design Lights Consortium - Compliant (PENDING)
FUS	Fuse and Fuseholder
FUS2	Double Fusing
GN	Generator Transfer Device
HL1	High/Low LED Light Level - Single AC-Input Feed / Switch Sensor (Required)
HL2	High/Low LED Light Level - Wired for Dual AC Input Feeds
MD	Integral Motion Detector - Specify "A" for Single Circuit: All On / All Off - Specify "B" for Single Circuit: All On / Half On - Specify "C" for Single Circuit: <ul style="list-style-type: none">All On / DIM / All OffDaylight Harvest
MDX	External Motion Detector - Specify "A" for Single Circuit: All On / All Off - Specify "B" for Single Circuit: High / Low Light White (WHT) or Bronze (BZ) Finish
PM	Pendant Mount (Two 12" Length Stems Standard) *43.875" Distance (On Center) between Stems
EM	Integral Emergency Battery - Requires CA Option - Must Specify Voltage [120V or 277V] - Consult Factory for EM Options
REM	Remote Emergency Battery - Requires CA Option - Must Specify Voltage [120V or 277V] - Consult Factory for REM Options
SU	Surge Protection for LED fixtures
TM	Tandem Mount (E74 Only) - Specify Length: 8', 12' or Custom Length
WMSH	Protective Shielding for Wall Mount
WMT	Wall Mount - Damp Only (Requires WMSH)

Product Specifications

DRIVER: 120 or 277 Volt, extreme temp range -30°C to 90°C, electronic driver [UNV].

FINISH: Housing parts are 5 stage-pretreated and finished in white polyester powder coat. Optional Natatorium Coating [NTC] is available.

HOUSING: Extruded aluminum with internal reinforcements of double thick cast aluminum ends for the most strength and rigidity. Tamper-proof torx screws secure end caps. All metal parts are 5-stage pre-treated.

LAMP: [LED] Light Emitting Diode.

LENS: U.V. stabilized .130" thick clear frosted polycarbonate lens [CFP] - Standard.

LENS FASTENERS: 4 screws to secure lens in

place [2 per side].

REFLECTOR: Formed aluminum with multiple bends for max rigidity and unitising all electrical components.

BACK BOX: Back Box Conduit Adapter [CA] Option required for Integral and Remote Emergency Battery, and specific LED Wattages.

COMPLIANCE: Built according to US, and Canadian safety standards. IP65 Rated and Suitable For Wet Location Covered Ceiling. Wall Mount - Damp Location; requires shielding to maintain wet listing.

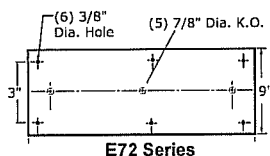
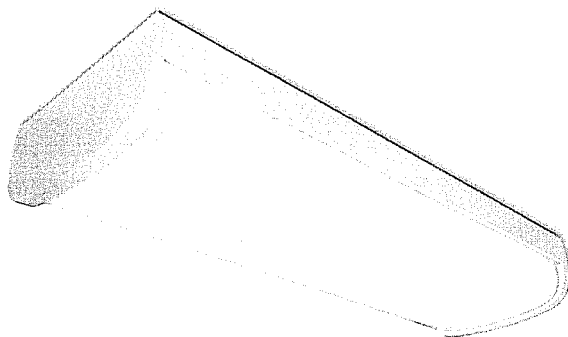
LONG LIFE: 50,000 hour LEDs at L80 reduce life cycle maintenance cost.



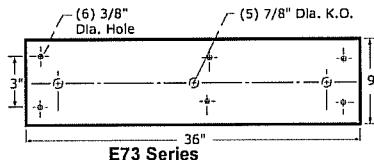
High Abuse Bi-Pin FL and LED Collection

E71 • E72 • E73 • E74

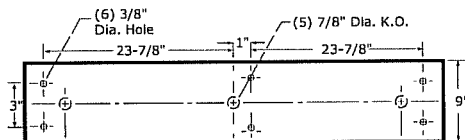
High Abuse Ceiling LED Luminaire



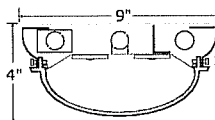
E72 Series



E73 Series



E74 Series



Catalog Number

Project Name & Location

Type

Product Specifications

DRIVER: 120 or 277 Volt, extreme temp range -30°C to 90°C, electronic driver [UNV].

FINISH: Housing parts are 5 stage-pretreated and finished in white polyester powder coat. Optional Natatorium Coating [NTC] is available.

HOUSING: Extruded aluminum with internal reinforcements of double thick cast aluminum ends for the most strength and rigidity. Tamper-proof torx screws secure end caps. All metal parts are 5-stage pre-treated.

LAMP: [LED] Light Emitting Diode.

LENS: U.V. stabilized .130" thick clear frosted polycarbonate lens [CFP] – Standard.

LENS FASTENERS: 4 screws to secure lens in

place [2 per side].

REFLECTOR: Formed aluminum with multiple bends for max rigidity and unitising all electrical components.

BACK BOX: Back Box Conduit Adapter [CA] Option required for Integral and Remote Emergency Battery, and specific LED Wattages.

COMPLIANCE: Built according to US, and Canadian safety standards. IP65 Rated and Suitable For Wet Location Covered Ceiling. Wall Mount - Damp Location; requires shielding to maintain wet listing.

LONG LIFE: 50,000 hour LEDs at L80 reduce life cycle maintenance cost.

order example:

E74-CFP-LED50-CT4-UNV-WHT

SERIES

E71	1 Foot Linear E71 Series
E72	2 Feet Linear E72 Series
E73	3 Feet Linear E73 Series
E74	4 Feet Linear E74 Series

LENS

CFP Clear Frosted Polycarbonate (Standard)

LED WATTAGE

SERIES	LED
E71	20w 30w
E72	20w 40w
E73	20w 40w 50w 60w
E74	20w 40w 50w 60w *80w *100w

*Requires Conduit Adapter/Back Box Option [CA]

LED COLOR TEMPERATURE

CT3	±3000K LED Color Temp
CT35	±3500K LED Color Temp
CT4	±4000K LED Color Temp
CT5	±5000K LED Color Temp
CT65	±6500K LED Color Temp

VOLTAGE

120	120 Volts
277	277 Volts
347	347 Volts

UNV 120~277 Universal Volt Electronic Driver
Must Specify Voltage for EM option

2UNV Two 120~277 Universal Volt Electronic Drivers
Must Specify Voltage for EM option

FINISH

BK	Black
BZ	Bronze
WHT	White Finish Standard
NTC	Natatorium Coating

OPTIONS

OPTIONS on 2nd Page