



CENTRALBIDDING
FROM CENTRAL AUCTION HOUSE

**5000128777 A PURCHASE OF ELECTRICAL SUPPLIES FOR THE
DEPARTMENT OF SEWERAGE
Jefferson Parish Government**

Project documents obtained from www.CentralBidding.com
08-Nov-2019 02:57:41 PM



JEFFERSON PARISH

Department of Purchasing

Michael S. Yenni
Parish President

Renny Simno
Director

June 2019

CHANGES TO JEFFERSON PARISH BIDDING PROCEDURES

The Jefferson Parish Purchasing Department would like to make vendors aware of the following changes:

DEDUCTIBLES: The Parish Attorney with concurrence of the Director of Risk Management have waived the deductible section of the Terms and Conditions for all Invitations to Bid, until further notice.

PROTESTS: Only those vendors that submit bids in response to a solicitation may protest any element of the procurement, in writing to the Director of the Purchasing Department. Written protest must be received within 48 hours of the release of the bid tabulation by the Purchasing Department. After consultation, the Parish Attorney's Office will then respond to protests in writing.
(For more information, please see Chapter 2, Article VII, Division 2, Sec. 2-914.1 of the Jefferson Parish Code of Ordinances.)

Please contact the Jefferson Parish Purchasing Department at 504-364-2678 if you have any questions or need assistance.



Bid Number 50 - 00128777

A purchase of electrical supplies for the Department of Sewerage

November 14, 2019 at 11:00 am

ATTENTION VENDORS!!!

Please review all pages and respond accordingly, complying with all provisions in the technical specifications and Jefferson Parish Instructions for Bidders and General Terms and Conditions. All bids must be received in the Purchasing Department by the bid due date and time.

**Jefferson Parish Purchasing Department
200 Derbigny Street
General Government Building, Suite 4400
Gretna, LA 70053
Buyer Name: Doris Abraham, Buyer I
Buyer Email: dabraham@jeffparish.net
Buyer Phone: 504-364-2690**

DATE: 11/08/2019

INVITATION TO BID
THIS IS NOT AN ORDER

Page: 1

BID NO.: 50-00128777

JEFFERSON PARISH

PURCHASING DEPARTMENT
P.O. BOX 9
GRETNA, LA. 70054-0009
504-364-2678

VENDOR:

BUYER: DABRAHAM@jeffparish.net

Bids will be received until 11:00 AM, 11/14/2019 via online at www.jeffparishbids.net or by hand delivery, USPS mail or other courier service to Purchasing Department, 200 Derbigny Street (General Government Building), Suite 4400, Gretna, LA 70053. For convenience, bidders may also submit bids in the East Bank Purchasing Department, Suite 404, Jefferson Parish Joseph S. Yenni Building, 1221 Elmwood Park Blvd., Jefferson LA 70123. However, if submitting bids on the day of bid opening, bidders must submit at the West Bank location only.

All bids submitted are subject to these instructions and general conditions and any special conditions and specifications contained herein, all of which are made part of this bid proposal reference. By submitting a bid, vendor agrees to comply with all provisions of Louisiana Law, as well be in compliance with the Jefferson Parish Code of Ordinances, Louisiana Code of Ethics, applicable Jefferson Parish ethical standards and Jefferson Parish Resolution No. 113646 and/or Resolution No. 113647. A copy of these resolutions may be obtained from the Office of the Parish Clerk, Suite 6700, Jefferson Parish General Government Building, 200 Derbigny Street, Gretna, LA 70053. You may also obtain a copy by visiting the Purchasing Department webpage at purchasing.jeffparish.net and clicking on On-line forms.

All vendors submitting bids should register as a Jefferson Parish vendor if not already yet registered. Registration forms may be downloaded from <http://purchasing.jeffparish.net> and by clicking on Vendor Information. Current W-9 forms with respective Tax Identification numbers and vendor applications may be submitted at any time; however, if your company is not registered and/or a current W-9 form is not on file, vendor registration is mandatory. Further, a current W-9 form and respective Tax Identification number must be supplied upon contract execution, should you be awarded a contract and/or issued purchase order. Failure to do so may result in delay of payment.

As per LSA-RS 47:301 et seq., all governmental bodies are excluded from payment of sales taxes to any Louisiana taxing body. Quotations shall be based on F.O.B. Delivered, anywhere within the Parish as designated by the Purchasing Department. JEFFERSON PARISH WILL ACCEPT ONE BID ONLY FROM EACH VENDOR. Items bid must meet specifications. JEFFERSON PARISH will accept one price for each item unless otherwise indicated. Two or more prices for one item will result in bid rejection. Bidders are required to complete, sign and return the bid form and/or complete and return the associated line item pricing forms as indicated. The price quoted for work shall be stated in figures. In the event there is a difference in unit prices and totals, the unit prices shall prevail.

JEFFERSON PARISH reserves the right to award contracts or place orders on a lump sum or individual item basis, or such combination, as shall in its judgment be in the best interest of JEFFERSON PARISH. Every contract or order shall be awarded to the LOWEST RESPONSIVE and RESPONSIBLE BIDDER, taking into consideration the CONFORMITY WITH THE SPECIFICATIONS and the DELIVERY AND/OR COMPLETION DATE.

PROTESTS: Only those vendors that submit bids in response to this solicitation may protest any element of the procurement, in writing to the Director of the Purchasing Department. Written protest must be received within 48 hours of the release of the bid tabulation by the Purchasing Department. After consultation, the Parish Attorney's Office will then respond to protests in writing. (For more information, please see Chapter 2, Article VII, Division 2, Sec. 2-914.1 of the Jefferson Parish Code of Ordinances.)

JEFFERSON PARISH reserves the right to cancel all or any part of an order if not shipped promptly. No charges will be allowed for parking or cartage unless specified in the quotation. The order must not be filled at a higher price than quoted. JEFFERSON PARISH reserves the right to cancel at any time and for any reason by issuing a THIRTY (30) day written notice to the contractor.

JEFFERSON PARISH requires all products to be new (current) and all work must be performed according to standard practices for the project. Unless otherwise specified, no aftermarket parts will be accepted. Unless otherwise specified, all workmanship and materials must have at least one (1) year guaranty, in writing, from the date of delivery and/or acceptance of the project. Any deviations or alteration from the specifications must be indicated on the bid form for each item and upon request, product data for same must be submitted by the time specified by the Purchasing Department.

If this bid requires a pre-bid conference (see Additional Requirements section), bidders are advised that such conference will be held to allow bidders the opportunity to identify any discrepancies in the bid specifications and seek further clarification regarding instructions. The Purchasing Department will issue a written response to bidders' questions in the form of an Addendum.

All formal Addenda require written acknowledgment on the bid form by the bidder. Failure to acknowledge an Addendum on the bid form shall cause the bid to be rejected; JEFFERSON PARISH reserves the right to award bid to next lowest responsive and responsible bidder in this event.

USE OF BRAND NAMES AND STOCK NUMBERS: Where brand names and stock numbers are specified, it is for the purpose of establishing certain minimum standards of quality. Bids may be submitted for products of equal quality, provided brand names and stock numbers are specified. Complete product data may be required prior to award.

Quantities listed are for bidding purposes only. Actual requirements may be more or less than quantities listed.

Bidders are not to exclude from participation in, deny the benefits of, or subject to discrimination under any program or activity, any person in the United States on the grounds of race, color, national origin, or sex; nor discriminate on the basis of age under the Age Discrimination Act of 1975, or with respect to an otherwise qualified handicapped individual as provided in Section 504 of the Rehabilitation Act of 1973, or on the basis of religion, except that any exemption from such prohibition against discrimination on the basis of religion as provided in the Civil Rights Act of 1964, or Title VI and VII of the Act of April 11, 1968, shall also apply. This assurance includes compliance with the administrative requirements of the Revenue Sharing final handicapped discrimination provisions contained in Section 51.55 (c), (d), (e), and (k)(5) of the Regulations. New construction or renovation projects must comply with Section 504 of the 1973 Rehabilitation Act, as amended, in accordance with the American National Standard Institute's specifications (ANSI A117.1-1991).

Jefferson Parish and its partners as the recipients of federal funds are fully committed to awarding a contract(s) to firm(s) that will provide high quality services and that are dedicated to diversity and to containing costs. Thus, Jefferson Parish strongly encourages the involvement of minority and/or woman-owned business enterprises (DBE's, including MBE's, WBE's and SBE's) to stimulate participation in procurement and assistance programs.

INSTRUCTIONS FOR BIDDERS AND GENERAL CONDITIONS

IN ACCORDANCE WITH STATE REGULATIONS JEFFERSON PARISH OFFERS ELECTRONIC PROCUREMENT TO ALL VENDORS

This electronic procurement system allows vendors the convenience of reviewing and submitting bids online. This is a secure site and authorized personnel have limited read access only. Bidders are encouraged to submit electronically using this free service; while the website accepts various file types, one single PDF file containing all appropriate and required bid documents is preferred. Bidders submitting uploaded images of bid responses are solely responsible for clarity. If uploaded images/documents are not legible, then bidder's submission will be rejected. Please note all requirements contained in this bid package for electronic bid submission.

Please visit our E-Procurement Page at www.jeffparishbids.net to register and view Jefferson Parish solicitations. For more information, please visit the Purchasing Department page at <http://purchasing.jeffparish.net>.

ADDITIONAL REQUIREMENTS FOR THIS BID

PLEASE MATCH THE NUMBERS PRINTED IN THIS BOX WITH THE CORRESPONDING INSTRUCTIONS BELOW.

13

1. All bidders must attend the MANDATORY pre-bid conference and will be required to sign in and out as evidence of attendance. In accordance with LSA R.S. 38:2212(I), all prospective bidders shall be present at the beginning of the MANDATORY pre-bid conference and shall remain in attendance for the duration of the conference. Any prospective bidder who fails to attend the conference or remain for the duration shall be prohibited from submitting a bid for the project.
2. Attendance to this pre-bid conference is optional. However, failure to attend the pre-bid conference shall not relieve the bidder of responsibility for information discussed at the conference. Furthermore, failure to attend the pre-bid conference and inspection does not relieve the successful bidder from the necessity of furnishing materials or performing any work that may be required to complete the work in accordance with the specification with no additional cost to the owner.
3. Contractor must hold current applicable JEFFERSON PARISH licenses with the Department of Inspection and Code Enforcement. Contractor shall obtain any and all permits required by the JEFFERSON PARISH Department of Inspection and Code Enforcement. The contractor shall be responsible for the payment of these permits. All permits must be obtained prior to the start of the project. Contractor must also hold any and all applicable Federal and State licenses. Contractor shall be responsible for the payment of these permits and shall obtain them prior to the start of the project.
4. A LA State Contractor's License will be required in accordance with LSA R.S. 37-2150 et. seq. and such license number will be shown on the outside of the bid envelope. Failure to comply will cause the bid to be rejected. Additionally if submitting the bid electronically, then the license number must be entered in the appropriate field in the Electronic Procurement system. Failure to comply will cause the bid to be rejected.
5. It is the bidder's responsibility to visit the job site and evaluate the job before submitting a bid.
6. Job site must be clean and free of all litter and debris daily and upon completion of the contract. Passageways must be kept clean and free of material, equipment, and debris at all times. Flammable material must be removed from the job site daily because storage will not be permitted on the premises. Precautions must be exercised at all times to safeguard the welfare of JEFFERSON PARISH and the general public.

INSTRUCTIONS FOR BIDDERS AND GENERAL CONDITIONS

7. **PUBLIC WORKS BIDS:** All awards for public works in excess of \$5,000.00 will be reduced to a formal contract which shall be recorded at the contractor's expense with the Clerk of Court and Ex-Officio Recorder of Mortgages for the Parish of Jefferson. A price list of recordation costs may be obtained from the Clerk of Court and Ex-Officio Recorder of Mortgages for the Parish of Jefferson. All awards in excess of \$25,000.00 will require both a performance and a payment bond. Unless otherwise stated in the bid specifications, the performance bond requirements shall be 100% of the contract price. Unless otherwise stated in the bid specifications, the payment bond requirements shall be 100% of the contract price. Both bonds shall be supplied at the signing of the contract.
8. **NON-PUBLIC WORKS BIDS:** A performance bond will be required for this bid. The amount of the bond will be 100% of the contract price unless otherwise indicated in the specifications. The performance bond shall be supplied at the signing of the contract.
9. **NON-PUBLIC WORKS BIDS:** A payment bond will be required for this bid. The amount of the bond will be 100% of the contract price unless otherwise indicated in the specifications. The payment bond shall be supplied at the signing of the contract.
10. All bidders must comply with the requirements stated in the attached "Standard Insurance Requirements" sheet attached to this bid solicitation. Prior to contract executions/purchase order issuance, the successful bidder will be required to provide final insurance certificates which shall name Jefferson Parish as an additional insured in accordance with the instructions in the aforementioned "Standard Insurance Requirements" sheet.
11. A bid bond will be required with bid submission in the amount of 5% of the total bid, unless otherwise stated in the bid specifications. Acceptable forms shall be limited to cashier's check, certified check, or surety bid bond. All sureties must be in original format (no copies). If submitting a bid online, vendors must submit an electronic bid bond through the respective online clearinghouse bond management system(s) as indicated in the electronic bid solicitation on Central Auction House. No scanned paper copies of any bid bond will be accepted as part of the electronic bid submission.
12. This is a requirements contract to be provided on an as needed basis. JEFFERSON PARISH makes no representations on warranties with regard to minimum guaranteed quantities unless otherwise stated in the bid specifications.
13. Freight charges should be included in total cost when quoting. If not quoted FOB DELIVERED, freight must be quoted as a separate item. Bid may be rejected if not quoted FOB DELIVERED or if freight charges are not indicated on bid form.
14. **PUBLIC WORKS BIDS - Completed, Signed and Properly Notarized Affidavits Required;** This applies to all solicitations for construction, alteration or demolition of public buildings or projects, in conformity with the provisions contained in LSA-RS 38:2212.9, LSA-RS 38:2212.10, LSA-RS 38:2224, and Sec 2-923.1 of the Jefferson Parish Code of Ordinances. For bidding purposes, all bidders must submit with bid submission COMPLETED, SIGNED and PROPERLY NOTARIZED Affidavits, including: Non-Conviction Affidavit, Non-Collusion Affidavit, Campaign Contribution Affidavit, Debt Disclosures Affidavit and E-Verify Affidavit. For the convenience of vendors, all affidavits have been combined into one form entitled PUBLIC WORKS BID AFFIDAVIT. This affidavit must be submitted in its original format, and without material alteration, in order to be compliant and for the bid to be considered responsive. A scanned copy of the completed, signed and properly notarized affidavit may be submitted with the bid, however, the successful bidder must submit the original affidavit in its original format and without material alteration upon contract execution. Failure to comply will result in the bid submission being rejected as non-responsive. The Parish reserves the right to award bid to the next lowest responsive and responsible bidder in this event.
15. **NON PUBLIC WORK BIDS - Completed, Signed and Properly Notarized Affidavits Required** in conformity with the provisions contained in LSA - RS 38:2224 and Sec 2-923.1 of the Jefferson Parish Code of Ordinances. For bidding purposes, all bidders must submit with bid submission COMPLETED, SIGNED and PROPERLY NOTARIZED Affidavits, including: Non-Collusion Affidavit, Debt Disclosures Affidavit and Campaign Contribution Affidavit. For the convenience of vendors, all affidavits have been combined into one form entitled NON PUBLIC WORKS BID AFFIDAVIT. This affidavit must be submitted in its original format, and without material alteration, in order to be compliant and for the bid to be considered responsive. A scanned copy of the completed, signed and properly notarized affidavit may be submitted with the bid, however, the successful bidder must submit the original affidavit in its original format and without material alteration upon contract execution. Failure to comply will result in the bid submission being rejected as non-responsive. The Parish reserves the right to award bid to the next lowest responsive and responsible bidder in this event.
16. The ensuing contract for this bid solicitation may be eligible for FEMA reimbursement and/or Federal funding/reimbursement. As such, the referenced appendix will be applicable accordingly and shall be considered a part of the bid documents. All applicable certifications must be duly completed, signed and submitted with bid submission. Failure to submit applicable certifications with bid submission will result in bid rejection.

It shall be the duty of every parish officer, employee, department, agency, special district, board, and commission: and the duty of every contractor, subcontractor, and licensee of the parish, and the duty of every applicant for certification of eligibility for a parish contract or program, to cooperate with the Inspector General in any investigation, audit, inspection, performance review, or hearing pursuant to Jefferson Parish Code of Ordinances Section 2-155.10(19). By submitting a bid, vendor acknowledges this and will abide by all provisions of the referenced Jefferson Parish Code of Ordinances.

DATE: 11/08/2019

INVITATION TO BID
THIS IS NOT AN ORDER

Page: 4

BID NO.: 50-00128777

JEFFERSON PARISH

PURCHASING DEPARTMENT
P.O. BOX 9
GRETN, LA. 70054-0009
504-364-2678

VENDOR: _____

BUYER: DABRAHAM

As per LSA-RS 47:301 et seq., all governmental bodies are excluded from payment of sales taxes to any Louisiana taxing body. Quotations shall be based on F.O.B. Agency warehouse or jobsite, anywhere within the Parish as designated by the Purchasing Department.

JEFFERSON PARISH reserves the right to cancel all or any part of an order if not shipped promptly. No charges will be allowed for parking or cartage unless specified in quotation. The order must not be filled at a higher price than quoted. JEFFERSON PARISH reserves the right to cancel at any time and for any reason by issuing a THIRTY (30) day written notice to the contractor.

JEFFERSON PARISH is expecting all products to be new and all work to be done in workman-like manner, according to standard practices. Any deviations or alteration from the specifications must be indicated on the bid form for each item and upon request, product data for same must be submitted by the time specified by the Purchasing Department.

DELIVERY: FOB JEFFERSON PARISH

INDICATE DELIVERY DATE ON EQUIPMENT AND SUPPLIES _____

INDICATE STARTING TIME (IN DAYS) FOR CONSTRUCTION WORK _____

INDICATE COMPLETION TIME (IN DAYS) FOR CONSTRUCTION WORK _____

In the event that addenda are issued with this bid, bidders MUST acknowledge all addenda on the bid form. Bidder must acknowledge receipt of an addendum on the bid form as indicated. Failure to acknowledge any addendum on the bid form will result in bid rejection.

Acknowledge Receipt of Addenda: NUMBER: _____
NUMBER: _____
NUMBER: _____
NUMBER: _____

LOUISIANA CONTRACTOR'S LICENSE NO.: (if applicable) _____

*** ALL BIDDERS MUST COMPLETE SECTION BELOW ***	
FIRM NAME: <u>Mr Reynolds Co</u>	
SIGNATURE: <u>D Landreneau</u> (Must be signed here)	TITLE: <u>Sales</u>
PRINT OR TYPE NAME: <u>D LANDRENEAU</u>	
ADDRESS: <u>700 Elmwood Park Blvd Ste A</u>	
CITY, STATE: <u>Harahan La</u>	ZIP: <u>70123</u>
TELEPHONE: <u>504 734-6228</u>	FAX: <u>()</u>
EMAIL ADDRESS: <u>DPLANDRENEAU@Reynco.com</u>	

TOTAL PRICE OF ALL BID ITEMS: \$ 1343.74

INVITATION TO BID FROM JEFFERSON PARISH - continued

BID NO.: 50-00128777

SEALED BID

ITEM NUMBER	QUANTITY	U/M	DESCRIPTION OF ARTICLES	UNIT PRICE QUOTED	TOTALS
1	6.00	EA	A purchase of electrical supplies for ee the Department of Sewerage 0001 - Element, Heater, Allen-Bradley no. W-60 (0831600)	\$ 21 ⁰⁸	\$ 126 ⁴⁸
2	10.00	EA	0002 - Breaker, circuit, 15 amperes, 120/240 VAC, 1 pole, quicklag-c type, new in factory box Westinghouse No. QC1015 (0841250)	\$ 12 ³⁵	\$ 123 ⁵⁰
3	10.00	EA	0003 - Block, contact, 1 normally open and 1 normally closed contact, Allen Bradley no. 800T-XA (0871290)	\$ 32 ⁴³	\$ 324 ³⁰
4	200.00	EA	0004 - Fork, sta-kon, no. 18-14 AWG wire range, no. 1/4 in stud, insulated, T & B No. 14RB14F (870520)	\$ 57	\$ 114-
5	20.00	EA	0005 - Seal, conduit knock out, 3/4 in, weatherproof, Hoffman no. AS075 (0874260)	\$ 8 ⁴⁰	\$ 168-
6	100.00	LF	0006 - Conduit, flexible, metal, PVC, liquid-tight, type UA, color gray, 1-1/2 in, (to meet or exceed Sealtite Anaconda) (0875250)	\$ 2 ²³ ₆₊	\$ 223-
7	10.00	EA	0007 - Condulet, LB, 1 inch, with gasket and cover, gray schedule 40 PVC (0875630)	\$ 2 ²⁹	\$ 22 ⁹⁰
8	12.00	EA	0008 - Connector, sealtite, straight, 1-1/2 inch, Appleton no. St-150 (087719F)	\$ 10 ¹¹	\$ 121 ³²
9	12.00	EA	0009 - Connector, SO cable, 1 inch, aluminum, 0500-.625 O.D., Cooper no. C-H or IF-513A Appleton CG 50100	\$ 6 ¹⁷	\$ 74 ⁰⁴

DATE: 11/08/2019

Page: 6

INVITATION TO BID FROM JEFFERSON PARISH - continued

BID NO.: 50-00128777

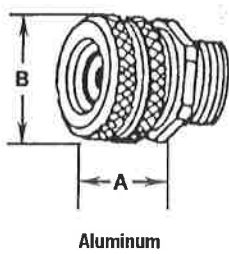
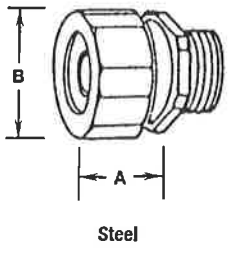
SEALED BID

ITEM NUMBER	QUANTITY	U/M ¹¹⁷	DESCRIPTION OF ARTICLES	UNIT PRICE QUOTED	TOTALS
10	3.00	EA	(0878080) 0010 - Terminal block, 12 circuits, 14-4 wire, class 9080, 600V, square D type D-12 (0880230) GE CR151B2	\$ 15. ⁴⁰ ₋	\$ 46. ²⁰ ₋

Straight Liquidtight Strain Relief Cord and Cable Connectors

Item 9

Suitable for use in:
Class I, Division 2
Class II, Division 1 and 2
Class III
NEMA 3R

	Catalog Number		Cable Range (Inches)	Color Coded Label	Dimensions (in/mm)		Wt. Lbs./Kgs. Per 100	
	Aluminum	Steel			A	B	Aluminum	Steel
 <p>Aluminum</p>	1/4 Inch Hubs							
	CG-0625 ②	CG-0625S ②	0.060—0.156	Purple/Pink	0.88/22.4	0.75/19.1	—	—
	CG-1525 ②	CG-1525S ②	0.156—0.250	Orange/Gray	0.88/22.4	0.75/19.1	3.70/1.68	9.00/4.08
 <p>Steel</p>	3/8 Inch Hubs							
	CG-1238	CG-1238S	0.125—0.187	Red	0.81/20.6	0.94/23.9	5.60/2.54	14.80/6.71
	CG-1838	CG-1838S	0.187—0.312	Brown	0.81/20.6	0.94/23.9	5.00/2.27	13.20/5.99
	CG-3138	CG-3138S	0.312—0.437	Yellow	0.81/20.6	0.94/23.9	5.60/2.54	14.80/6.71
	1/2 Inch Hubs ④							
	CG-1250	CG-1250S	0.125—0.187	Red	0.81/20.6	0.94/23.9	6.00/2.72	15.60/7.08
	CG-1850	CG-1850S	0.187—0.312	Brown	0.81/20.6	0.94/23.9	6.00/2.72	15.60/7.08
	CG-3150	CG-3150S	0.312—0.437	Yellow	0.81/20.6	0.94/23.9	6.00/2.72	15.60/7.08
	CG-3750	CG-3750S	0.375—0.500	Purple	0.81/20.6	1.25/31.8	8.00/3.63	20.80/9.43
	CG-5050	CG-5050S	0.500—0.625	Pink	0.81/20.6	1.25/31.8	8.00/3.63	20.80/9.43
	CG6250 ①	CG-6250S ①	0.625—0.750	Orange	0.81/20.6	1.25/31.8	8.00/3.63	20.80/9.43
	3/4 Inch Hubs ④							
	CG-1275	CG-1275S	0.125—0.250	Blue	0.88/22.4	1.25/31.8	10.00/4.54	26.00/11.79
	CG-2575	CG-2575S	0.250—0.375	Green	0.88/22.4	1.25/31.8	10.00/4.54	26.00/11.79
	CG-3775	CG-3775S	0.375—0.500	Purple	0.88/22.4	1.25/31.8	10.00/4.54	26.00/11.79
	CG-5075	CG-5075S	0.500—0.625	Pink	0.88/22.4	1.25/31.8	10.00/4.54	26.00/11.79
	CG-6275	CG-6275S	0.625—0.750	Orange	0.88/22.4	1.38/35.1	10.00/4.54	26.00/11.79
	CG-7575 ①	CG-7575S ①	0.750—0.875	Gray	0.88/22.4	1.38/35.1	10.00/4.54	26.00/11.79
	1 Inch Hubs ④							
	CG-37100	CG-37100S	0.375—0.500	Purple	0.94/23.9	1.38/35.1	15.00/6.80	39.00/17.69
	CG-50100	CG-50100S	0.500—0.625	Pink	0.94/23.9	1.38/35.1	15.00/6.80	39.00/17.69
	CG-62100	CG-62100S	0.625—0.750	Orange	0.94/23.9	1.38/35.1	15.00/6.80	39.00/17.69
	CG-75100	CG-75100S	0.750—0.875	Gray	0.94/23.9	1.75/44.5	15.00/6.80	39.00/17.69
	CG-87100	CG-87100S	0.875—1.000	Red	0.94/23.9	1.75/44.5	15.00/6.80	39.00/17.69
	CG-100100 ①	CG-100100S ①	1.000—1.125	Blue	0.94/23.9	1.75/44.5	15.00/6.80	39.00/17.69
	1-1/4 Inch Hubs ④							
	CG-75125	CG-75125S	0.750—0.875	Gray	1.06/26.9	1.75/44.5	23.00/10.43	60.00/27.22
	CG-87125	CG-87125S	0.875—1.000	Red	1.06/26.9	1.75/44.5	25.00/11.34	65.00/29.48
	CG-100125	CG-100125S	1.000—1.125	Blue	1.06/26.9	2.13/54.1	25.00/11.34	65.00/29.48
	CG-112125	CG-112125S	1.125—1.250	Brown	1.06/26.9	2.13/54.1	25.00/11.34	65.00/29.48
	CG-125125 ①	CG-125125S ①	1.250—1.375	Green	1.06/26.9	2.13/54.1	22.00/9.98	57.00/25.85
	CG-137125 ①	CG-137125S ①	1.375—1.500	Yellow	1.06/26.9	2.13/54.1	20.00/9.07	52.00/23.59
	1-1/2 Inch Hubs							
	CG-115150	CG-115150S	1.156—1.312	—	1.94/49.3	2.19/55.6	31.10/14.11	92.00/41.73
	2 Inch Hubs							
	CG-128150 ②	CG-128150S	1.281—1.531	—	2.63/66.8	2.56/65.0	61.20/27.76	160.00/72.57
	2-1/2 Inch Hubs							
	CG-153200 ②	CG-153200S	1.531—1.780	—	2.44/62.0	3.00/76.2	95.00/43.09	230.00/104.33
	3 Inch Hubs							
	CG-165200 ②	—	1.650—2.000	—	2.44/62.0	3.19/81.0	100.00/45.36	—
	3-1/2 Inch Hubs ②							
	CG-200250 ②	—	2.000—2.343	—	3.06/77.7	3.44/87.4	141.30/64.09	—
	4 Inch Hubs ②							
	CG-225250 ②	—	2.250—2.500	—	3.06/77.7	3.69/93.7	141.90/64.36	—
	5 Inch Hubs							
	CG-250300 ②	—	2.500—2.843	—	3.06/77.7	4.06/103.1	196.30/89.04	—
	6 Inch Hubs							
	CG-268300 ②	—	2.687—3.062	—	3.25/82.6	4.50/114.3	256.30/116.26	—
	7 Inch Hubs							
	CG-300350	—	3.000—3.390	—	3.25/82.6	4.75/120.7	212.50/96.39	—
	8 Inch Hubs							
	CG-328350	—	3.281—3.515	—	3.25/82.6	5.00/127.0	225.00/102.06	—
	9 Inch Hubs							
	CG-350400	—	3.500—3.843	—	3.25/82.6	5.25/133.4	275.00/124.74	—
	10 Inch Hubs							
	CG-375400	—	3.750—4.000	—	3.25/82.6	5.50/139.7	293.80/133.27	—

- ① Remove sufficient outer covering of cord or cable to pass conductors through connector body.
② Not UL Listed.
③ Not CSA Certified.
④ PVC coating available on select connectors. Add suffix -PVC to catalog number.

Terminal Blocks

Panel or Mounting Track Terminal Blocks

CR151B

One Piece Terminal Boards for Control Circuit

600 Volts

30 Amps

Application

These molded terminal boards are for use in wiring of control panels.

A write-on marking strip markable with ink or pencil is included. Terminal boards may be mounted end-to-end without spacing.

Features

- Electrical rating—30 amperes, 600 volts.
- Rugged material—phenolic.
- Number of points per board—4, 6, 12, or 13.
- Mounting—may be mounted end-to-end without spacing
- Terminal identification—15/32-inch wide marking strip; markable with ink or pencil.
- Wiring—terminals accept wire sizes through AWG # 10

Product Number Selection Instructions

1. Order one piece terminal boards by complete Product Number and by package quantity. Example: Eight (8) six-point, one-piece boards are required, rated 30 amperes, 600 volts with screw-type terminals both sides: order ten CR151B6 at **\$7.20 each, GO-10G5**.

Ratings for all Binding Screw and Round Washer Head Screw Terminals

- Suitable for #18 - #10 AWG stranded or solid copper wire, single conductor only.
- Torque 20 in-lb.

Ratings for all Wire Clamp Terminals

- Suitable for #18 - #10 AWG stranded or solid copper wire, single or parallel conductors of same size and type (stranded/stranded or solid/solid only).
- Torque 20 in-lb.

Parallel two conductor size combinations

Wire Size (AWG)	Torque
#10 with #12	20 in-lb (stranded/stranded or solid/solid wire only)
#12 with #14	20 in-lb (stranded/stranded wire only)
#14 with #16	20 in-lb (stranded/stranded or solid/solid wire only)
#14 with #18	20 in-lb (stranded/stranded wire only)
#16 with #18	20 in-lb (stranded/stranded or solid/solid wire only)

Parallel three conductor size combinations

Wire Size	Torque
#14 with #14 with #14	20 in-lb (stranded/stranded/stranded wire only)
#16 with #16 with #16	20 in-lb (stranded/stranded/stranded wire only)
#18 with #18 with #18	20 in-lb (stranded/stranded/stranded wire only)



CR151B, 6-Point Terminal Board

Agency Certifications

- UL Recognized, File E40800, Vol. 3, Sec. 2 (Category XCFR2 Terminal Blocks - Component)
- CSA Certified, File LR-15492-157 (Class 3211 07 Industrial Control Equipment - Miscellaneous Apparatus)

Item #10

Terminal Blocks Panel or Mounting Track Terminal Boards CR151B

Section 11

Panel or Mounting Track Terminal Boards

Termination Type	Terminal Cover	Points Per Board ¹	Product Number ²	List Price GO-10G5
Screw-Type Both Sides	None	4	CR151B4	\$4.80
Screw-Type Both Sides	None	6	CR151B6	\$7.20
Screw-Type Both Sides	None	12	CR151B2	\$12.90
Screw-Type Both Sides	None	13	CR151B213A	\$14.00
Screw-Type Both Sides	Clear Cover	4	CR151B41AF	\$5.60
Screw-Type Both Sides	Clear Cover	6	CR151B61AF	\$8.20
Screw-Type Both Sides	Clear Cover	12	CR151B21AF	\$14.10
Screw-Type One Side, Wire Clamp Other Side	None	4	CR151B45	\$6.30
Screw-Type One Side, Wire Clamp Other Side	None	6	CR151B65	\$8.10
Screw-Type One Side, Wire Clamp Other Side	None	12	CR151B25	\$15.00
Screw-Type One Side, Wire Clamp Other Side	Clear Cover	4	CR151B45AF	\$7.10
Screw-Type One Side, Wire Clamp Other Side	Clear Cover	6	CR151B65AF	\$9.10
Screw-Type One Side, Wire Clamp Other Side	Clear Cover	12	CR151B25AF	\$16.20
Screw With Wire Clamp Both Sides	None	4	CR151B46	\$7.20
Screw With Wire Clamp Both Sides	None	6	CR151B66	\$9.00
Screw With Wire Clamp Both Sides	None	12	CR151B26	\$16.80
Screw With Wire Clamp Both Sides	None	13	CR151B213B	\$19.00
Screw With Wire Clamp Both Sides	Clear Cover	4	CR151B46AF	\$8.00
Screw With Wire Clamp Both Sides	Clear Cover	6	CR151B66AF	\$10.00
Screw With Wire Clamp Both Sides	Clear Cover	12	CR151B26AF	\$18.00
Washer Head Screw Both Sides	None	4	CR151B40	\$5.40
Washer Head Screw Both Sides	None	6	CR151B60	\$7.80
Washer Head Screw Both Sides	None	12	CR151B20	\$14.10
Washer Head Screw Both Sides	Clear Cover	4	CR151B40AF	\$6.20
Washer Head Screw Both Sides	Clear Cover	6	CR151B60AF	\$8.80
Washer Head Screw Both Sides	Clear Cover	12	CR151B20AF	\$15.30

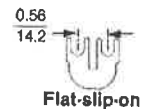
¹Where number of points desired is not listed use combination of boards.

²Product Number and price represent one piece. Sold only in packages of 10. Order in multiples of 10 pieces. Minimum order quantity is 10.

Accessories

Accessory Type	Description	Product Number	List Price GO-10G5
Jumper	For customer connection of adjacent screw-type terminal board	CR151X301 ³	\$0.55

³Product Number and price represent one piece. Sold only in packages of 100. Order in multiples of 100 pieces. Minimum order quantity is 100.

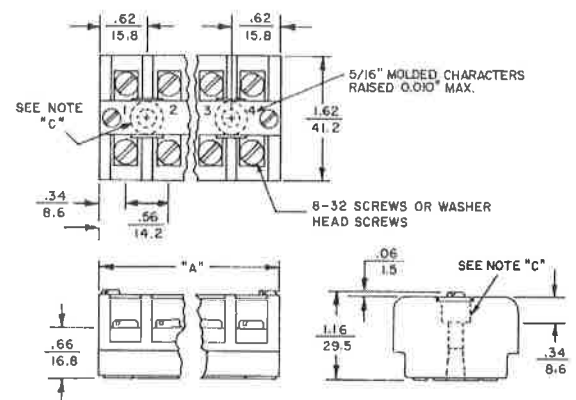


CR151X301 Diagram

Outlines and Dimensions in. (mm) For Estimating Only

Panel or Mounting Track Terminal Boards

Points Per Board	Dimension A	Distance Between Mounting Hole Centers in (mm)	Package (10 units) Shipping Weight, Pounds
4	2.38 (60.4)	1.12 (28.5)	2
6	3.50 (88.9)	2.25 (57.2)	3
12	6.88 (174.8)	5.62 (142.8)	6
13	7.50 (190.5)	6.19 (157.2)	7



Note C: Terminal boards mount with two #8 screws. Mounting holes are located under Marking Strip.

