

***Statement of Qualifications
TEC Questionnaire***

**Professional Architectural and
Engineering Services on an
As-Needed Basis for
Architectural Type Projects**

Resolution No. 136764

Jefferson Parish, Louisiana



HDC H. Davis Cole &
Associates, LLC
Consulting Engineers
Civil & Environmental Engineering

TEC Professional Services Questionnaire

A. Project Name and Advertisement Resolution Number:

**Professional Architectural and Engineering Services on an
As-Needed Basis for Architectural Type Projects**
Resolution No. 136764

B. Firm Name & Address where Project work will be performed:



H. Davis Cole & Associates, LLC
1340 Poydras Street, Suite 1850
New Orleans, LA 70112

C. Name, title and contact information of Principal, as defined in Section 2-926 of the Jefferson Parish Code of Ordinances, who is a registered, licensed architect, professional engineer, or surveyor in the State of Louisiana:

H. Davis Cole, P.E.
Managing Member/ Principal Engineer
Phone: (504) 836-2020
Fax: (504) 836-2010
Email: hddcole@hdaviscole.com

D. Name and contact information of employee who is a registered and licensed architect, professional engineer, or surveyor in the State of Louisiana in the applicable discipline. A subcontractor may be substituted here only if the advertised Project requires more than one discipline.

David A. Martin, P.E.
Vice President
Phone: (504) 836-2020
Fax: (504) 836-2010
Email: dmartin@hdaviscole.com

E. Please provide the number of employees whose primary function corresponds with each category:

<u>3</u>	Administrative	--	Estimators	--	Specification Writers
<u>1*</u>	Architects (Licensed)	--	Geologists	--	Structural Engineers
--	Chemical Engineers	--	Geotechnical Engineers	--	Graduate Engineers
<u>2</u>	Civil Engineers	--	Interior Designers	<u>1*</u>	Project Managers
<u>1</u>	Construction Inspectors	--	Landscape Architects	--	Clerical
--	Ecologists	--	Land Surveyor	--	Grant/Funding Specialist
--	Electrical Engineers	--	Mechanical Engineers	--	Sanitary Engineers
--	Engineer Intern	--	Environmental Engineers		
--	Professional Land Surveyors			<u>8</u>	TOTAL

* Denotes contract employee

F. Is this submittal by a JOINT-VENTURE? Please check: YES _____ NO ✓

If marked "No" skip to Section I. If marked "yes" complete Sections G-H.

TEC Professional Services Questionnaire

G. If submittal is by JOINT-VENTURE, list the firms participating and outline specific areas of responsibility (including administrative, technical, and financial) for each firm. Please attach additional pages if necessary.

1. Not Applicable

2.

H. Has this JOINT-VENTURE previously worked together? Please check:

YES

☐

NO

☒

Not Applicable

I. List all subcontractors anticipated for this Project. Please note that all subcontractors must submit a fully completed copy of this questionnaire, applicable licenses, and any other information required by the advertisement. See Jefferson Parish Code of Ordinances, Sec. 2-928(a)(3). Please attach additional pages if necessary.

Name & Address	Specialty:	Worked with Firm Before (Yes or No):
1.		
2.		
3.		
4.		
5.		
6.		

J. Please specify the total number of support personnel that may assist in the completion of this Project:

8

(The total number of employees available to contribute to the project from the Prime and Subconsultant Firms)

TEC Professional Services Questionnaire

K. List the professional in charge, key persons, specialists, and individual consultants anticipated for this Project and provide their relevant information below. If necessary, please attach additional documentation (i.e. resume) that demonstrates employment history and experience of the Firm's key persons that may assist in the completion of this Project. Please attach additional pages if necessary.

PROFESSIONAL IN CHARGE OR PROJECT:

Name & Title:

H. Davis Cole, P.E.

Managing Member/ Principal Engineer

Project Assignment:

Principal Engineer

Name of Firm with which associated:



H. Davis Cole & Associates, LLC

Years' experience with this Firm:

15 Years (2006)

Education: Degree(s)/Year/Specialization:

BSCE, 1998, Civil & Environmental Engineering, Louisiana State University

Active Registration: Year first registered/discipline:

2002, Civil Engineer, Louisiana, No. 30219

2017, LSUCCC Third Party Provider, U02383

Other experience and qualifications relevant to the proposed Project:

Mr. Cole founded H. Davis Cole & Associates, LLC in 2006 after serving several years with international, national, and local engineering firms. Mr. Cole has over two decades of experience working with various types of program management and civil engineering projects including wastewater, drainage, potable water, structural, and transportation improvement projects. Mr. Cole has served the Southeast Louisiana community for the past decade through his role as a Technical Advisor on many infrastructure improvement projects as well as the grant and program management of recovery programs following disasters. Mr. Cole's career has focused on providing civil and environmental engineering design solutions to municipal clients across the Gulf Coast. Mr. Cole also serves on the Louisiana Naval War Memorial Commission.

EXPERIENCE WITH JEFFERSON PARISH

Old Harvey Neighborhood Revitalization Study, Jefferson Parish, LA. HDCA, as a part of a Joint Venture - Villavaso-HDCA, LLC, is currently providing Jefferson Parish with a comprehensive revitalization assessment and conceptual plan for improvements to the Old Harvey neighborhood on the Westbank. The intent of the study is to identify the drivers of the area's blighted condition and develop a plan for revitalization to better serve the diverse community and spearhead economic opportunities. HDCA's role focuses on community engagement and addressing existing infrastructure deficiencies to accommodate future growth. Public infrastructure improvement recommendations may include drainage projects (capacity and canal safety/aesthetics), sewer improvements projects (capacity, elimination of overflow and backups), water improvement projects (capacity, larger water mains to encourage industrial/business development); and roadway improvement projects (traffic flow and access to areas of the community). Additional elements HDCA will be studying include improving environmental quality concerns, community facilities, recreational facilities, community safety, as well as potential funding sources and programs for the implementation of the recommendations. Mr. Cole is serving as the Principal Engineer on the study. (ongoing)

Brown Avenue Canal Improvements, Jefferson Parish, LA. HDCA designed improvements to the area surrounding Brown Avenue on the West Bank of Jefferson Parish. Improvements to the area included the enclosure of the Brown Avenue Canal utilizing approximately 1,125 linear feet of 96" reinforced concrete pipe arch as well as cold-planing segments of the existing Brown Avenue and overlaying with new asphalt. Upon completion of the construction of the first phase of the project, Jefferson parish increased the scope of the project to include the remaining section of Brown Avenue for improvements. Phase II of the project was successfully bid and is awaiting the start of construction. Mr. Cole will provide construction administration services for Phase II's construction. (ongoing)

TEC Professional Services Questionnaire

H. Davis Cole, P.E.

continued

Rehabilitation of the Jonathan Davis Wastewater Treatment Plant, Department of Sewerage, Jefferson Parish, LA. HDCA provided technical services for the complete structural, mechanical, and electrical rehabilitation of the Jonathan Davis Wastewater Treatment Plant in Lafitte, LA. The existing plant, a 1980s-vintage "Omega Type" Package Plant was to be replaced with a new state-of-the-art sequencing batch reactor plant and the existing effluent discharge into Bayou Barataria to be abandoned in favor of a new wetlands assimilation effluent discharge. Design of the new plant and effluent pump station has been completed however has not been slated for construction. Mr. Cole served as Technical Advisor. (2019)

Evaluation and Repair of "Price Brothers" Force Mains, Jefferson Parish, LA. HDCA provided engineering design and construction phase services for detailed evaluations of pre-stressed concrete cylinder pipe (PCCP) pipelines throughout Council Districts 1, 2, 3, and 4 in Jefferson Parish. These pipelines, alternatively referred to as "Price Brothers" pipe, are prone to rupture and present a potentially serious maintenance liability. HDCA evaluated various technologies and developed contract documents for an "as-needed", work-order basis evaluation program utilizing CCTV, electromagnetic, acoustic, and other evaluation techniques. Mr. Cole served as Technical Advisor. (2020)

Rehabilitation of the Harvey Wastewater Treatment Plant, Department of Sewerage, Jefferson Parish, LA. HDCA provided design, bidding, and construction administration services for the construction of improvements at the existing Harvey Wastewater Treatment Plant including construction of a new 107-foot diameter elevated trickling filter and rehabilitation of the existing trickling filter pump station. HDCA provided mechanical design of the new filter, yard piping modifications, site work, and overall project management. The new trickling filter was designed to treat up to 28 million gallons per day of sewage and contains over 108,000 cubic feet of polypropylene "random dump" type media and includes a 107" diameter hydraulically driven or "reaction-type" rotary distributor. Mr. Cole served as a technical advisor during the design phase and led construction administration efforts. (2016)

Sewer Lift Station L12-3 Rehabilitation, Department of Sewerage, Jefferson Parish, LA. HDCA provided engineering services for the replacement of an obsolete sewerage lift station on the West Bank of Jefferson Parish. HDCA provided design and construction management services for the overall project which included the construction of a new triplex submersible lift station with a capacity of 3,100 gallons per minute, approximately 350 ft. of deep gravity sewerage pipeline, and approximately 350 ft. of sewerage force main pipeline. The project also included piping modifications in order to connect the new station to a pre-installed sewerage force main pipeline along Belle Terre Road. Construction was recently completed. Mr. Cole served as a Technical Advisor and provided construction management services for the project. (2013)

Clearview Parkway / Earhart Expressway Interchange and Surrounding Areas Drainage Study, Jefferson Parish Department of Drainage, Jefferson, LA. Mr. Cole, as Principal Engineer, oversaw the hydraulic modeling and engineering activities associated with this significant hydraulic evaluation effort aimed at solving recurring flooding issues associated with the Clearview Parkway/Earhart Expressway Interchange and the surrounding Elmwood area. For this, a hydraulic model was developed using PCSWMM modeling software for the approximate 70 acre drainage basin. Using the hydraulic model, many alternatives aimed at relieving the recurring flooding problems were evaluated. Recommendations included a series of storm water detention ponds within the interchange, a new 300 cubic foot per second drainage pumping station, and major improvements to St. Peters Ditch all totaling approximately \$30 M. (2006)

Willwood Lane Roadway Improvements, Jefferson Parish Department of Streets, Jefferson, LA. This project involved the design of an addition of a third turning lane to this roadway. Also included were redesign of the roadway drainage systems, redesign of a railroad crossing, and permitting and coordinating with the railroad and various utilities. The construction cost opinion for the project was \$1.9 M. Mr. Cole served as the Principal Engineer. (2006)

Lapalco Boulevard Overlay – Belle Chasse Highway to Wall Boulevard, Jefferson Parish Department of Streets, Jefferson, LA. Mr. Cole served as the Principal Engineer for the construction phase of this project which involved roadway improvements, in accordance with DOTD standards, for a 0.6 mile 4-lane segment of Lapalco Boulevard. Included were pavement repairs, addition and adjustment of drainage structures, curb and gutter replacements, and approach slab replacements. Provision and oversight of DOTD Certified Inspectors was also within the scope of the project. The project construction cost was \$1.1 M. (2004)

Lapalco Boulevard Overlay – Wall Boulevard to Timberlane Drive – Jefferson Parish Department of Streets, Jefferson, LA. Mr. Cole served as the Principal Engineer for the design phase of this project. This project involves the design of roadway improvements, in accordance with LADOTD standards, for a 0.5 mile long, 4-lane segment of Lapalco Boulevard including pavement repairs, addition and adjustment of drainage structures, curb and gutter replacements, and approach slab replacements. The construction cost opinion was \$1.8 M. (2004)

Lapalco Boulevard Overlay – Bayou Fatma to Brooklyn Avenue, Jefferson Parish Department of Streets, Jefferson, LA. Mr. Cole served as the Principal Engineer for the design phase of this project which involves the design of roadway improvements, in accordance with LADOTD standards, for a 0.3 mile long, 4-lane segment of Lapalco Boulevard including: pavement repairs, addition and adjustment of drainage structures, and curb and gutter replacements. The construction cost opinion was \$1.7 M. (2004)

TEC Professional Services Questionnaire

H. Davis Cole, P.E.

continued

Veterans Boulevard Improvements – Loyola Drive to the St. Charles Parish Line, City of Kenner Department of Public Works, Kenner, LA. Mr. Cole served as the Senior Project Manager for evaluation and study phase of this project which involved the addition of two additional travel lanes to create a divided boulevard roadway and reconstruction of the existing two-lane roadway. Included with the project are drainage improvements, construction of a 4-lane highway bridge, and water and sewer utilities relocations. The construction cost opinion for the project was \$4.0 M. (2004)

Evaluation of Canal No. 10, Jefferson Parish Department of Drainage, Jefferson, LA. For this effort, a hydraulic and physical evaluation of Canal No. 10 located in the northern portion of Kenner, Louisiana was conducted. Specifically, slope stability of the existing canal banks and hydraulic capacity of the existing canal were assessed. Given these parameters, recommendations were made to restore the canal to its required hydraulic capacity while stabilizing areas where slope stability was an issue. (2006)

West Bank Water Treatment Plant Filter Upgrade, Jefferson Parish Department of Water, Marrero, LA. This project involved the replacement of existing sand media with a dual media (sand and anthracite), replacement of existing ceramic underdrains with plastic underdrains, replacement of filter-wash troughs, extension of filter gullet walls, and removal and replacement of the existing surface backwash system with a new air-scour backwash system at a 30 MGD surface water treatment plant. Also included was integration of the new filter backwash control system into the existing plant SCADA system. Mr. Cole served as the Project Engineer during the construction phase of the project. (2003)

HVAC/BUILDING SERVICES

Third-Party Fire Marshal Inspection of Captain D's Restaurants, Multiple Locations, LA. HDCA provided third-party fire marshal inspection and completed the Office of the State Fire Marshal's Certificate of Completion for the construction of several Captain D's restaurant locations around central and south Louisiana. Mr. Cole oversaw the certification and periodic inspection of various phases of the stores' construction to ensure the stores were built in conformance with the fire-marshal approved plans and specifications. (2018)

Baton Rouge North Plant, City of Baton Rouge/Parish of East Baton Rouge, LA. HDCA was a member of the CDM Smith team which was selected by the East Baton Rouge City - Parish Engineer Selection Committee to design improvements to the North Wastewater Treatment Plant. The published construction cost estimate for the project was \$45 million. HDCA was responsible for the design of HVAC systems, Odor Control Piping, and Refurbishment and Relocation of the existing Odor Control Units at the WWTP. Mr. Cole served as Technical Advisor. (2017)

STRUCTURAL ENGINEERING

Improvements to the Terrace Avenue Wastewater Treatment Plant, City of Slidell, LA. HDCA is providing engineering design services to implement mechanical, structural, and process improvements at the City's existing Terrace Avenue WWTP. HDCA had previously provided the City of Slidell with a structural and mechanical assessment of the various existing facilities at the Terrace Avenue WWTP. The plant has an average daily flow of approximately 4.0 MGD and a peak hydraulic capacity of 15 MGD. Facilities and processes to be addressed include the headworks, grit removal system, primary clarifiers, secondary clarifiers, chlorination facility, spray water system, return activated sludge pump station, waste activated pump station, and in-house station. HDCA also prepared construction cost opinions and prepared an application for funding for future improvements through the EPA/LDEQ Clean Water State Revolving Loan Fund which was accepted for funding by LDEQ and EPA. Mr. Cole, who has been integral in the design of previous rehabilitations at the station over the course of his career, will serve as the Technical Advisor for the project. (ongoing)

Delacroix Assembly Center, St. Bernard Parish, Louisiana. HDCA provided professional engineering services for the Pavilion and Dockside Improvements to the Delacroix Assembly Center in St. Bernard Parish. The project included the preliminary and final design of the bulkhead & waterfront fishing pavilion, as well as a mobile boat hoist, travel crane platform, as well as overall improvements at the site including an access road. All phases of the project were successfully bid and are currently under construction. Mr. Cole served as technical advisor for the project. (2018)

Clarifier Tank Foundation, Occidental Chemical Corporation & WesTech Engineering, Taft, LA. HDCA prepared construction documents for the construction of a pile-supported, reinforced concrete foundation for a clarifier tank. Unique to this project was the re-analysis of the existing foundation. HDCA determined that the existing piles could be reused. HDCA also provided the design of new "adjusting cans" for the foundation. Mr. Cole served as Principal-in-Charge, responsible for the overall project. (2011)

Hurricane Shutters for Popich Building, Plaquemines Parish, LA. HDCA served as the Design Engineer for this project which involved the installation of removable storm panels at the Plaquemines Parish Government Building. Services included development of plans & specifications, development of renderings of the installed panels, and construction administration. The project was funded

TEC Professional Services Questionnaire

H. Davis Cole, P.E.

continued

through FEMA Hazard Mitigation Funding. Mr. Cole served as Principal Engineer, responsible for the overall project. (2010)

New Community Center, St. Patrick's Catholic Church, Ferriday, LA. Mr. Cole prepared conceptual and detailed design of all elements of a new 3,600 square foot community center, which included classrooms, a kitchen, restrooms and a gathering hall. ADA compliance and permitting and inspection by the Louisiana State Fire Marshall's Office were required for the project. Mr. Cole prepared all design elements, including structural, foundation, HVAC, plumbing, and electrical design; obtained necessary permits; and assisted with bidding and periodic construction inspection. (2006)

Poland Avenue Wharf/Cruise Terminal, Port of New Orleans, LA. Mr. Cole was responsible for water, sewer, and drainage utilities design as well as traffic and parking plans for the proposed Poland Avenue Cruise Terminal. (2006)

Rapid Evaluation Safety Assessment of Residential Structures, St. Bernard Parish Department of Community Development, Chalmette, LA. Subsequent to Hurricane Katrina which devastated St. Bernard Parish with Category 3 winds and also inundated 100% of all residential structures with flood waters, St. Bernard Parish implemented a Rapid Evaluation Safety Assessment Program for all residential structures within the Parish. The purpose of this program was to rapidly assess the structural integrity of all of the Parish's residential structures for the purpose of advising homeowners as to the safety and structural soundness of their residence. Using the ATC-45 Rapid Evaluation Safety Assessment Form, formulated by the Applied Technology Council, Mr. Cole lead a team of 12 inspectors over a two (2) week period during which over 1,500 residences were assessed. (2005)

K-Area Nuclear Material Storage (KAMS) Facility, United States Department of Energy - Savannah River Site, Aiken, South Carolina. Mr. Cole designed extensive structural modifications to convert an existing nuclear reactor facility to store weapons grade plutonium transferred to the Savannah River Site from the Rocky Flats Environmental Technology Site. Specifically, Mr. Cole designed reinforced concrete radiation shield walls, physical security barriers and improvements, and security personnel facilities. All structures were designed for seismic conditions. Mr. Cole also provided engineering support during the construction phase of the design/build project. (1999)

PLANNING SERVICES

Hazard Mitigation Plan Update - Louisiana Planning Pilot Grant Program (LPPGP), Tensas Parish Police Jury, LA. Under the LPPGP, HDCA, along with Bryant Hammett & Associates, LLC, provided hazard mitigation planning services resulting in an update to the Action Plan contained within the Parish's existing Plan. HDCA scoped hazard mitigation measures (including portable generators and permanent generator receptacles) for 16 sewer lift stations in Tensas Parish, as well as hardening measures for Parish facilities including fire stations, police stations, town halls, and the Parish library. Mr. Cole served as the Principal in Charge responsible for review of proposed mitigation measures. (2009)


Hazard Mitigation Plan Update - Louisiana Planning Pilot Grant Program (LPPGP), Concordia Parish Police Jury, LA. Under the LPPGP, HDCA, along with Bryant Hammett & Associates, LLC, provided hazard mitigation planning services resulting in an update to the Action Plan contained within the Parish's existing Plan. HDCA prepared scoping documents for hardening of Parish facilities including police stations, fire stations, and town halls. Mr. Cole served as Technical Advisor responsible for review of proposed mitigation measures. (2009)

Plaquemines Parish Master Plan, Plaquemines Parish, LA. The project developed a new Master Plan for Plaquemines Parish, which included guidance related to roads (State & parish), drainage, sewerage, pump stations, utilities services, and future development. HDCA served as a sub-consultant, providing services related to utilities and mapping. The development of this new Master Plan was funded by CDBG grants. Mr. Cole provided planning services related to water & wastewater plants and infrastructure as well as drainage improvements. (2012)

SITE DESIGN/ENVIRONMENTAL ENGINEERING

Lake Lery Marsh Creation CIAP Program Management, Department of Public Works, St. Bernard Parish, LA. HDCA served as the Parish's Construction Program Manager for this Coastal Impact Assistance Program (CIAP) - funded project in Delacroix, LA. The project involved dredging and material placement for the creation of approximately 67 acres of marsh in Lake Lery adjacent to Bayou Terre aux Boeufs. As Construction Program Manager, HDCA served as the Owner's Representative during construction, responsible for oversight of the construction administration process, coordination and interface with grant and regulatory agencies, overall grants management and closeout, and construction inspection. Mr. Cole served as Technical Advisor for the duration of construction. Phase I of the project was completed in 2017 and HDCA was awarded Phase II of this project which will include the creation of an additional 23 acres of new marsh. Construction of Phase II is set to begin in early 2021. (Ongoing)

TEC Professional Services Questionnaire

KEY PERSON, SPECIALIST, OR INDIVIDUAL CONSULTANT
Name & Title:
David A. Martin, P.E. <i>Vice President</i>
Project Assignment:
Engineering/ Design Services & Project Management
Name of Firm with which associated:
 H. Davis Cole & Associates, LLC
Years' experience with this Firm:
14 (2007)
Education: Degree(s)/Year/Specialization:
B.S., 2008, Civil Engineering, Louisiana State University
Active Registration: Year first registered/discipline:
2013, Civil Engineer, Louisiana, PE.0037832 2014, Professional Engineer, Texas, PE 116461 2014, Civil Engineer, Mississippi, No. 25768 Traffic Control Supervisor, Technician & Flagger Certification, ATSSA, 2014, 2018
Other experience and qualifications relevant to the proposed Project:
<p>Mr. Martin serves as Vice President of HDCA. In this capacity, Mr. Martin oversees all engineering services for the firm, with a focus on standards and quality control within the design product. Starting with HDCA as a student intern in 2007, Mr. Martin has provided the full variety of consulting services including inspection, design, CADD drafting, computer modeling, specification writing, construction management, and project management and controls for a wide variety of municipal, industrial, and private clients. Mr. Martin's expertise is in the realm of general civil and mechanical design, and he has provided these services in wastewater, water drainage, structural, and roadway disciplines during his tenure at HDCA. Mr. Martin is also a licensed contractor in the State of Louisiana.</p> <p>EXPERIENCE WITH JEFFERSON PARISH</p> <p>Improvements to the "Rheem" Building, Department of Drainage, Jefferson Parish, LA. HDCA prepared plans and specifications for modifications to the Drainage Department's Yard Facility on the East Bank. Improvements included the addition of a dormitory and staging area for staff during emergency operations. Mr. Martin served as project manager overseeing overall design of the improvements. The project was successfully constructed and is currently in use. (ongoing)</p> <p>N. Hullen Drainage Improvements, Jefferson Parish, LA. HDCA is providing professional design services to Jefferson Parish for the preparation of construction documents for drainage and roadway improvements on North Hullen Street. The planned improvements to the street include subsurface drainage capacity improvements between 7th Street and the West Esplanade Canal and a complete reconstruction of the existing roadway. Mr. Martin is serving as the project manager and overseeing the overall design of the project. (ongoing)</p> <p>Metairie Road Smart Growth Program: Causeway Boulevard Intersection, Jefferson Parish, LA. HDCA is designing improvements at the intersection of Causeway Boulevard and Metairie Road as part of the overall revitalization and re-branding of the Metairie Road corridor. The scope of HDCA's project includes the removal and replacement of the existing asphalt, removal and replacement of ADA ramps, re-striping of the pedestrian crossings, and the addition of pedestrian lighting and landscaping elements. The project is currently in the final phase of design. Mr. Martin is serving as project manager and providing design oversight for all aspects of the project. (ongoing)</p> <p>Brown Avenue Canal Improvements, Jefferson Parish, LA. HDCA designed improvements to the area surrounding Brown Avenue on the West Bank of Jefferson Parish. Improvements to the area included the enclosure of the Brown Avenue Canal</p>

TEC Professional Services Questionnaire

David A. Martin, P.E.
continued

utilizing approximately 1,125 linear feet of 96" reinforced concrete pipe arch as well as cold-planing segments of the existing Brown Avenue and overlaying with new asphalt. Upon completion of the construction of the first phase of the project, Jefferson parish increased the scope of the project to include the remaining section of Brown Avenue for improvements. Design of Phase II of the project was completed and is awaiting the start of construction. Mr. Martin has served as project manager for the duration of the project. (ongoing)

Improvements to the Ehret & Broas Lift Station (L-13-6), Jefferson Parish, LA. HDCA is providing design, permitting, bid phase, and construction phase services related to the restoration of functionality at the existing lift station on the west bank of Jefferson Parish. The existing station is to be demolished and replaced with a new, relocated station. The new station includes a wet well, valve pit, control panel, and emergency pump out, along with submersible pumps and Variable Frequency Drives (VFDs). Mr. Martin is serving as Project Manager for the design of the project. (ongoing)

Bayou Segnette Drainage Pump Station Improvements, Jefferson Parish, LA. HDCA is providing engineering services for proposed improvements to the Bayou Segnette Drainage Pump Station No. 1. Improvements to the existing pump station will include the construction of a catwalk system to connect the pump station building to the proposed new access bridge; demolition of the existing stationary bar racks upstream; construction of a new "Waskey" type bridge; installation of catenary type mechanical trash rack system; and required electrical and control facilities to support proposed improvements. HDCA is responsible for overall project management and design of all elements related to the mechanical trash rack system. The project is currently under construction and Mr. Martin is serving as the project manager. (ongoing)

Rehabilitation of the Avondale North Sewerage Pump Station, Jefferson Parish, LA. HDCA provide professional engineering services for planned improvements to the Avondale North Lift Station located on the west bank of Jefferson Parish. The existing station is a submersible type with four total pumps, only one of which is currently operational. The total discharge capacity at the site is 12,000 GPM. HDCA is preparing construction documents for a submersible pump with a Premium Efficiency Motor and Variable Frequency Drive (VFD), as well as new controls and valves. Project scope also included the installation of VFD drive components, the replacement of pump controls, valves, and conduits, as well as the cleaning and rehabilitation of the existing wet well. Mr. Martin served as Project Manager for the project. Design of the project has been completed but has not been constructed.(ongoing)

Evaluation and Repair of "Price Brothers" Force Mains, Department of Sewerage, Jefferson Parish, LA. HDCA provided engineering design and detailed evaluations of pre-stressed concrete cylinder pipe (PCCP) pipelines throughout Council Districts 1, 2, and 4 in Jefferson Parish. These pipelines, alternatively referred to as "Price Brothers" pipe, are prone to rupture and present a potentially serious maintenance liability. HDCA evaluated various technologies and developed contract documents for an "as-needed", work-order basis evaluation program utilizing CCTV, electromagnetic, acoustic, and other evaluation techniques. Mr. Martin prepared contract documents for Council District 4. (2020)

Rehabilitation of the Jonathan Davis Wastewater Treatment Plant, Department of Sewerage, Jefferson Parish, LA. HDCA provided engineering services for the complete design of the structural, mechanical, and electrical components of the Jonathan Davis Wastewater Treatment Plant in Lafitte, LA. The existing plant, a 1980s – vintage "Omega Type" Package Plant was to be replaced with a new state-of-the-art sequencing batch reactor plant and the existing effluent discharge into Bayou Barataria will be abandoned in favor of a new wetlands assimilation effluent discharge. Mr. Martin served as Project Manager for services. Design services have been completed but the plant has not been constructed. (2019)

Rehabilitation of the Harvey Wastewater Treatment Plant, Department of Sewerage, Jefferson Parish, LA. HDCA provided design, bidding, and construction administration services for the construction of improvements at the existing Harvey Wastewater Treatment Plant including construction of a new 107-foot diameter elevated trickling filter and rehabilitation of the existing trickling filter pump station. HDCA provided mechanical design of the new filter, yard piping modifications, site work, and overall project management. The new trickling filter was designed to treat up to 28 million gallons per day of sewage and contains over 108,000 cubic feet of polypropylene "random dump" type media and includes a 107" diameter hydraulically driven or "reaction-type" rotary distributor. Mr. Martin provided mechanical design of the new filter and rotary distributor, design of yard piping modifications and site work, and participated in construction administration of the project. (2017)

HVAC/BUILDING SERVICES

Baton Rouge North Plant, City of Baton Rouge/Parish of East Baton Rouge, LA. HDCA was a member of the CDM Smith team which was selected by the East Baton Rouge City - Parish Engineer Selection Committee to design improvements to the North Wastewater Treatment Plant. The published construction cost estimate for the project was \$45 million. HDCA was responsible for the design of HVAC systems, Odor Control Piping, and Refurbishment and Relocation of the existing Odor Control Units at the WWTP. Mr. Martin was responsible for the design of various HVAC and plumbing elements. (2017)

TEC Professional Services Questionnaire

David A. Martin, P.E.
continued

STRUCTURAL ENGINEERING

Improvements to the Terrace Avenue Wastewater Treatment Plant , City of Slidell, LA. HDCA is providing engineering design services to implement mechanical, structural, and process improvements at the City's existing Terrace Avenue WWTP. HDCA had previously provided the City of Slidell with a structural and mechanical assessment of the various existing facilities at the Terrace Avenue WWTP. The plant has an average daily flow of approximately 4.0 MGD and a peak hydraulic capacity of 15 MGD. Facilities and processes to be addressed include the headworks, grit removal system, primary clarifiers, secondary clarifiers, chlorination facility, spray water system, return activated sludge pump station, waste activated pump station, and in-house station. HDCA also prepared construction cost opinions and prepared an application for funding for future improvements through the EPA/LDEQ Clean Water State Revolving Loan Fund which was accepted for funding by LDEQ and EPA. Mr. Martin is serving as Project Manager for the design of the plant. (ongoing)

Delacroix Assembly Center, St. Bernard Parish, Louisiana. HDCA provided professional engineering services for the Pavilion and Dockside Improvements to the Delacroix Assembly Center in St. Bernard Parish. The project included the preliminary and final design of the bulkhead & waterfront fishing pavilion, as well as a mobile boat hoist, travel crane platform, as well as overall improvements at the site including an access road. All phases of the project were successfully bid and constructed. Mr. Martin served as project manager and prepared construction specifications for the project. (2018)

West 8th Avenue Generator Platform, City of Covington, LA. HDCA provided engineering services for the design of a generator platform to support emergency operability of a lift station located near St. Tammany Parish Hospital. HDCA provided a site assessment, structural analysis, and site design for the project. Mr. Martin served as project manager for the project and oversaw the design of the project. (2017)

Foundation and Support Structure for Rotating Drum Assembly, Reptile Tannery of Louisiana (RTL)/The Lemoine Company, Lafayette, LA. Mr. Martin served as the project manager and engineer for the design of a shallow foundation and support structure for a 20-ton rotating alligator skin treatment and drying drum at RTL's production facility in Lafayette, Louisiana. The project was completed in a "design-build" format in association with The Lemoine Company. The structure and foundation were custom - designed and constructed to match the foreign-manufactured drum. HDCA prepared plans and specifications for the project, which was successfully installed and placed into operation. (2014)

Residential/Commercial Construction Code Reviews, New Orleans Metropolitan Area, LA. Mr. Martin has conducted code reviews for various residential and commercial construction projects throughout the New Orleans Metropolitan area. Mr. Martin has completed structural design of timber and masonry buildings and foundations in accordance with the latest codes and loading requirements. (2013)

Clarifier Tank Foundation, Occidental Chemical Corporation & WesTech Engineering, Taft, LA. HDCA prepared construction documents for the construction of a pile – supported, reinforced concrete foundation for a clarifier tank. Unique to this project was the re-analysis of the existing foundation. HDCA determined that the existing piles could be reused. HDCA also provided the design of new "adjusting cans" for the foundation. Mr. Martin conducted all structural calculations and prepared construction plans for the project, which was successfully constructed. (2011)

Hurricane Shutters for Popich Building, Plaquemines Parish, LA. HDCA served as the Design Engineer for this project which involved the installation of removable storm panels at the Plaquemines Parish Government Building. Services included development of plans & specifications, development of renderings of the installed panels, and construction administration. The project was funded through FEMA Hazard Mitigation Funding. Mr. Martin prepared construction plans and specifications for the project. (2010)

SITE DESIGN/ ENVIRONMENTAL ENGINEERING

Lake Lery Marsh Creation CIAP Program Management, Department of Public Works, St. Bernard Parish, LA. HDCA is serving as the Parish's Construction Program Manager for this Coastal Impact Assistance Program (CIAP) - funded project in Delacroix, LA. Phase I of the project involved the dredging and material placement for the creation of approximately 67 acres of marsh in Lake Lery adjacent to Bayou Terre aux Boeufs. As Construction Program Manager, HDCA serves as the Owner's Representative during construction, responsible for oversight of the construction administration process, coordination and interface with grant and regulatory agencies, overall grants management and closeout, and construction inspection. HDCA was recently awarded Phase II of this project which will include the creation of an additional 23 acres of new marsh. Construction of this phase is anticipated to begin in early 2021. Mr. Martin has led the program management efforts for HDCA's involvement with this project. (Ongoing)

TEC Professional Services Questionnaire

David A. Martin, P.E.

continued

Civil and Site Design for Kenner Goodyear Tire Store, Embree Development Group, Kenner, LA. Mr. Martin served as the project manager for the civil and site design of a proposed 6,500 square foot Goodyear Tire Store in Kenner, Louisiana. The store required the development of an approximately 1.5 acre outparcel of Esplanade Mall in Kenner. HDCA provided site design, including site layout, grading, drainage, and pavement design as well as general administrative support for the schematic and final design of the project. (2015)

Plaquemines Parish Oyster Conveyors, Plaquemines Parish, LA. HDCA, as a subconsultant to Jacobs, Inc., provided engineering services for improvements at the Parish Oyster Conveyor facilities. Services included site improvements, electrical, and structural work pertaining to the installation of oyster conveyors at four docks owned by the parish. The project was funded by CDBG grants and construction was subject to Davis-Bacon Act compliance. Mr. Martin developed structural design of piles and paving, and obtained coastal use permits for the project. The project was successfully completed. (2017)

Civil and Site Design for Covington Goodyear Tire Store, Embree Development Group, Covington, LA. Mr. Martin served as the project manager for the civil and site design of a proposed 6,500 square foot Goodyear Tire Store in Covington, Louisiana. HDCA provided site design, including site layout, grading, drainage, retaining wall and pavement design as well as general administrative support for the schematic and final design of the project. (2016)

Phase I Environmental Site Assessments of Lafitte Scattered Sites, Edmundites, Sacred Heart, and Ujamaa Properties, New Orleans, LA. Mr. Martin conducted site visits and field observations for environmental site assessments of approximately 75 sites selected for redevelopment by a joint venture consisting of the Housing Authority of New Orleans (HANO) and Providence Community Housing. Many of these sites have since been returned to commerce. (2007)

Proposed Single-Family Residential Development, Webber Realty Holdings, Kenner, LA. Mr. Martin conducted preliminary level drainage calculations and assisted in the preparation of preliminary design of a proposed single-family development for Webber Realty Holdings in Kenner, LA. He further assisted in the preliminary design of drainage and sewerage facilities. Mr. Martin also prepared preliminary drawings for the proposed development, which contained 57 total lots. While work was not performed for the City, the project involved coordination with the City of Kenner Department of Public Works. (2007)


PLANNING

Plaquemines Parish Master Plan, Plaquemines Parish, LA. The project developed a new Master Plan for Plaquemines Parish, which included guidance related to roads (State & parish), drainage, sewerage, pump stations, utilities services, and future development. HDCA served as a sub-consultant, providing services related to utilities and mapping. The development of this new Master Plan was funded by CDBG grants. Mr. Martin assisted in the preparation of planning recommendations related to water, sewerage, and drainage. (2012)

Hazard Mitigation Plan Update - Louisiana Planning Pilot Grant Program (LPPGP), Concordia Parish Police Jury, LA. Under the LPPGP, HDCA, along with Bryant Hammett & Associates, LLC, provided hazard mitigation planning services resulting in an update to the Action Plan contained within the Parish's existing Hazard Mitigation Plan. As Project Engineer, Mr. Martin developed proposed hazard mitigation measures for Parish facilities and completed benefit-cost analyses for each potential project. Facilities included police & fire stations and town halls. Mr. Martin prepared the overall plan amendment. (2009)

Hazard Mitigation Plan Update - Louisiana Planning Pilot Grant Program (LPPGP), Tensas Parish Police Jury, LA. Under the LPPGP, H. Davis Cole & Associates, along with Bryant Hammett & Associates, LLC, provided hazard mitigation planning services resulting in an update to the Action Plan contained within the Parish's existing Hazard Mitigation Plan. As Project Engineer, Mr. Martin developed Hazard Mitigation measures for Parish facilities and completed benefit-cost analyses for each potential project. Facilities included police and fire stations, town halls, and the Parish library. Mr. Martin also developed proposed hazard mitigation measures for sewer lift stations within the Parish, and prepared the overall plan amendment. (2009)

TEC Professional Services Questionnaire

KEY PERSON, SPECIALIST, OR INDIVIDUAL CONSULTANT
Name & Title:
Rachel Merkl <i>Civil Designer</i>
Project Assignment:
Civil Designer
Name of Firm with which associated:
 H. Davis Cole & Associates, LLC
Years' experience with this Firm:
3 (2018)
Education: Degree(s)/Year/Specialization:
B.S., 2017, Civil & Environmental Engineering, University of New Orleans
Active Registration: Year first registered/discipline:
Traffic Control Supervisor & Technician Certification, ATSSA, 2019
Other experience and qualifications relevant to the proposed Project:
<p>Ms. Merkl is a degreed civil engineer currently enrolled in a master's program in Architecture. She joined HDCA as a member of the Engineering Design team and assists with the creation of design documents for infrastructure projects. Ms. Merkl is skilled in AutoCAD, ArcGIS, RISA, HEC-GeoHMS, HEC-GeoRAS, EPANET, SketchUp and HEC-RAS, as well as the Adobe Creative Suite of programs.</p> <p>EXPERIENCE WITH JEFFERSON PARISH</p> <p>Improvements to "Rheem" Building, Department of Drainage, Jefferson Parish, LA. HDCA prepared plans and specifications for modifications to the Drainage Department's Yard Facility on the East Bank of the Parish to provide for a dormitory and staging area for staff during emergency operations. Ms. Merkl assisted with the design of plans for the project and has provided periodic field services throughout construction. Construction was completed and the facility is currently in-use. (ongoing)</p> <p>Improvements to the Ehret & Broas Lift Station (L-13-6), Jefferson Parish, LA. HDCA is providing design, permitting, bid phase, and construction phase services related to the restoration of functionality at the existing lift station on the west bank of Jefferson Parish. The existing station is to be demolished and replaced with a new, relocated station. The new station includes a wet well, valve pit, control panel, and emergency pump out, along with submersible pumps and Variable Frequency Drives (VFDs). Ms. Merkl is assisting with the preparation of construction drawings for the project. (ongoing)</p> <p>N. Hullen Drainage Improvements, Jefferson Parish, LA. HDCA is providing professional design services to Jefferson Parish for the preparation of construction documents for drainage and roadway improvements on North Hullen Street. The planned improvements to the street include subsurface drainage capacity improvements between 7th Street and the West Esplanade Canal and a complete reconstruction of the existing roadway. Ms. Merkl is assisting with the development of construction documents for the project. (ongoing)</p> <p>Brown Avenue Canal Improvements, Jefferson Parish, LA. HDCA designed improvements to the area surrounding Brown Avenue on the West Bank of Jefferson Parish. Improvements to the area included the enclosure of the Brown Avenue Canal utilizing approximately 1,125 linear feet of 96" reinforced concrete pipe arch as well as cold-planing segments of the existing Brown Avenue and overlaying with new asphalt. Upon completion of the construction of the first phase of the project, Jefferson parish increased the scope of the project to include the remaining section of Brown Avenue for improvements. Ms. Merkl assisted with the preparation of construction documents for this phase of the project. Design of Phase II of the project was recently bid and is awaiting the start of construction. (ongoing)</p> <p>Bayou Segnette Drainage Pump Station Improvements, Jefferson Parish, LA. HDCA is providing engineering services for proposed improvements to the Bayou Segnette Drainage Pump Station No. 1. Improvements to the existing pump station</p>

TEC Professional Services Questionnaire

Rachel Merkl

continued

will include the construction of a catwalk system to connect the pump station building to the proposed new access bridge, demolition of existing stationary bar racks upstream, construction of a new "Waskey" type bridge, installation of catenary trash rack system, and required electrical and controls facilities necessary to support such improvements. HDCA is responsible for overall project management and design of all elements related to the mechanical trash rack system. Ms. Merkl assisted with the preparation of construction documents. (ongoing)

Metairie Road Smart Growth Program: Causeway Boulevard Intersection, Jefferson Parish, LA. HDCA is designing improvements at the intersection of Causeway Boulevard and Metairie Road as part of the overall revitalization and re-branding of the Metairie Road corridor. The scope of HDCA's project includes the removal and replacement of the existing asphalt, removal and replacement of ADA ramps, restriping of the pedestrian crossings, and the addition of pedestrian lighting and landscaping elements. The project is currently in the final phase of design. Ms. Merkl is assisting with the preparation of construction documents for the project. (ongoing)

HVAC/BUILDING SERVICES

Residential Construction Plans, Private Entity. Ms. Merkl assisted with the development of civil, architectural, structural, and electrical plans for the construction of a residential development in Arabi, LA (ongoing)

SITE DESIGN/ ENVIRONMENTAL ENGINEERING

Baton Rouge Adolescent Psychiatric Hospital Site Design, Baton Rouge, LA. HDCA, as a subconsultant to MB Design Consultants, is currently providing civil engineering and permitting services for the development of a new 23,000 sq ft psychiatric hospital in Baton Rouge, LA. HDCA's services include the preparation of a Drainage Impact Study consisting of a detailed hydrologic and hydraulic analysis of the property as necessary for compliance with the Baton Rouge Unified Development Code. HDCA is also developing detailed construction plans for the on-site improvements, including the geometric layout; grading and drainage layout; paving details; and overall utility layout. HDCA is also providing permitting services as well as the Stormwater Pollution Prevention Plan (SWPPP) for the project. Ms. Merkl is assisting with the development of construction documents for the project. (Ongoing)

West Point Development – Veterans Housing Site Design, New Orleans, LA. HDCA is currently providing site design services for the development of a new housing development to benefit veterans of the United States Military in New Orleans. The development, which is situated on nearly 8 acres, will consist of 9 buildings with 30 apartment units each, as well as a 5,000 sq ft administration building and 288 parking spots. HDCA is preparing the formal drainage calculations and Stormwater Management Plan required to be submitted to the City of New Orleans as required for compliance with the City of New Orleans Stormwater Management Ordinance. Additional services include the development of civil and site construction documents which will consist of a site plan, grading and drainage plan, paving plan, sewer plan, water service plan, electrical plan, and associated detail drawings necessary for permitting and construction. Due to the large size of the development, HDCA will be responsible for the design of on-site stormwater retention facilities, as required. HDCA will also prepare a SWPP, Notice of Intent (NOI), and all additional permits required for coverage under the LDEQ LAR100000 permit. Ms. Merkl is assisting with the development of construction documents for the project. (Ongoing)

STRUCTURAL ENGINEERING

Improvements to the Terrace Avenue Wastewater Treatment Plant, City of Slidell, LA. HDCA was selected to provide engineering design services to implement mechanical, structural, and process improvements at the City's existing Terrace Avenue WWTP. HDCA had previously provided the City of Slidell with a structural and mechanical assessment of the various existing facilities at the Terrace Avenue WWTP. The plant has an average daily flow of approximately 4.0 MGD and a peak hydraulic capacity of 15 MGD. Facilities and processes to be addressed include the headworks, grit removal system, primary clarifiers, secondary clarifiers, chlorination facility, spray water system, return activated sludge pump station, waste activated pump station, and in-house station. HDCA also prepared construction cost opinions and prepared an application for funding for future improvements through the EPA/LDEQ Clean Water State Revolving Loan Fund which was accepted for funding by LDEQ and EPA. Ms. Merkl has provided CAD and design services for the instrumentation and electrical design of the project. (ongoing)

TEC Professional Services Questionnaire

KEY PERSON, SPECIALIST, OR INDIVIDUAL CONSULTANT
Name & Title:
John Baucum <i>Construction Manager</i>
Project Assignment:
Resident Project Representative
Name of Firm with which associated:
 H. Davis Cole & Associates, LLC
Years' experience with this Firm:
10 (2011)
Education: Degree(s)/Year/Specialization:
Coursework, Pearl River Community College ASCE Construction Engineering Certificate Program (CERCE17)
Active Registration: Year first registered/discipline:
Traffic Control Supervisor & Technician Certification, ATSSA, 2018
Other experience and qualifications relevant to the proposed Project:
<p>Mr. Baucum is an experienced water & sewer operator, with advanced knowledge of many aspects of public works construction. Mr. Baucum serves as a Construction Manager for HDCA, responsible for Construction Phase Services and Resident Inspection in support of design activities. Mr. Baucum's breadth of knowledge is evident in both his communications in the field and astute reporting of observations.</p> <p>EXPERIENCE WITH JEFFERSON PARISH</p> <p>Improvements to "Rheem" Building, Department of Drainage, Jefferson Parish, LA. HDCA prepared plans and specifications for modifications to the Drainage Department's Yard Facility on the East Bank. Improvements included the addition of a dormitory and staging area for staff during emergency operations. Mr. Baucum also provided Resident Inspection Services periodically throughout construction of the project. Construction has been completed and the facility is now in-use. (ongoing)</p> <p>Brown Avenue Canal Improvements, Jefferson Parish, LA. HDCA designed improvements to the area surrounding Brown Avenue on the West Bank of Jefferson Parish. Improvements included the enclosure of the Brown Avenue Canal utilizing approximately 1,125 linear feet of 96" reinforced concrete pipe arch as well as cold-planing segments of the existing Brown Avenue and overlaying with new asphalt. Upon completion of the construction of the first phase of the project, Jefferson parish increased the scope of the project to include the remaining section of Brown Avenue for improvements. Design of Phase II of the project was recently bid and is awaiting the start of construction. Mr. Baucum is assisting with construction management of the project. (ongoing)</p> <p>SITE DESIGN/ENVIRONMENTAL</p> <p>Lake Lery Marsh Creation CIAP Program Management, Department of Public Works, St. Bernard Parish, LA. HDCA served as the Parish's Construction Program Manager for this Coastal Impact Assistance Program (CIAP) - funded project in Delacroix, Louisiana. The project involved dredging and material placement for the creation of approximately 67 acres of marsh in Lake Lery adjacent to Bayou Terre aux Boeufs. As Construction Program Manager, HDCA served as the Owner's Representative during construction, responsible for oversight of the construction administration process, coordination and interface with grant and regulatory agencies, overall grants management and closeout, and construction inspection. Mr. Baucum served as Resident Project Representative for the construction of Phase I of the project which was completed in 2017. HDCA was awarded Phase II of this project which will include the creation of an additional 23 acres of new marsh. (Ongoing)</p> <p>Plaquemines Parish Oyster Conveyors, Plaquemines Parish, LA. HDCA, as a subconsultant to Jacobs, Inc., provided engineering services for improvements at the Parish Oyster Conveyor facilities. Services included site improvements, electrical, and structural work pertaining to the installation of oyster conveyors at four docks owned by the parish. Mr. Baucum served</p>

TEC Professional Services Questionnaire

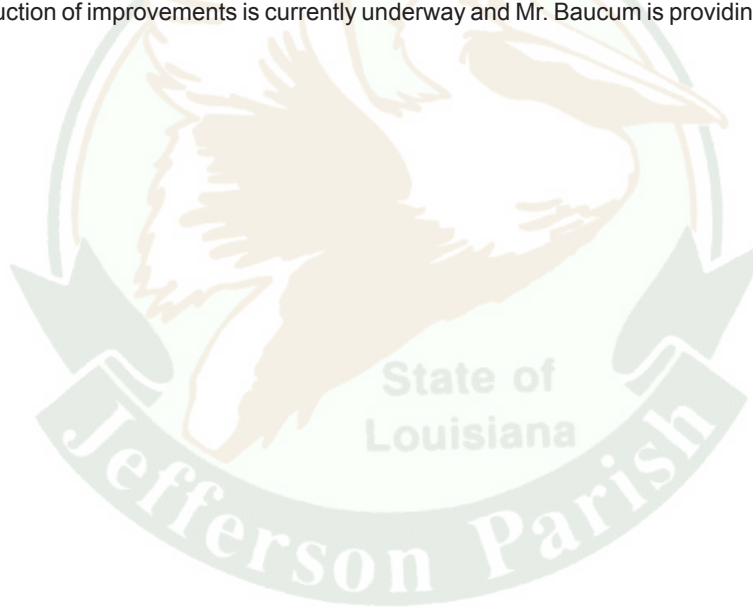
John Baucum *continued*

as resident project representative, responsible for daily inspection, coordination with the Contractor, and general construction administration. (2017)

Third-Party Fire Marshal Inspection of Captain D's Restaurants, Multiple Locations, LA. HDCA provided third-party fire marshal inspection and completed the Office of the State Fire Marshal's Certificate of Completion for the construction of several Captain D's Restaurant locations around central and south Louisiana. Mr. Baucum assisted with the periodic inspection and field assessment of various phases of the stores' construction to ensure the stores were built in conformance with the fire-marshall approved plans and specifications. (2018)

STRUCTURAL ENGINEERING

Improvements to the Terrace Avenue Wastewater Treatment Plant , City of Slidell, LA. HDCA is providing engineering design services to implement mechanical, structural, and process improvements at the City's existing Terrace Avenue WWTP. HDCA had previously provided the City of Slidell with a structural and mechanical assessment of the various existing facilities at the Terrace Avenue WWTP. The plant has an average daily flow of approximately 4.0 MGD and a peak hydraulic capacity of 15 MGD. Facilities and processes to be addressed include the headworks, grit removal system, primary clarifiers, secondary clarifiers, chlorination facility, spray water system, return activated sludge pump station, waste activated pump station, and in-house station. HDCA also prepared construction cost opinions and prepared an application for funding for future improvements through the EPA/LDEQ Clean Water State Revolving Loan Fund which was accepted for funding by LDEQ and EPA. Mr. Baucum's experience as a former plant operator has allowed him to assist with equipment recommendations throughout the design of the plant. Construction of improvements is currently underway and Mr. Baucum is providing daily project representation services. (ongoing)



TEC Professional Services Questionnaire

K. List the professional in charge, key persons, specialists, and individual consultants anticipated for this Project and provide their relevant information below. If necessary, please attach additional documentation (i.e. resume) that demonstrates employment history and experience of the Firm's key persons that may assist in the completion of this Project. Please attach additional pages if necessary.

PROFESSIONAL IN CHARGE OR PROJECT:

Name & Title:

Angie Triche

Administrative/Project Controls

Project Assignment:

Administrative Services

Name of Firm with which associated:

 **H. Davis Cole & Associates, LLC**

Years' experience with this Firm:

13 Years (2008)

Education: Degree(s)/Year/Specialization:

B.S., 2013, Management, University of Phoenix

Active Registration: Year first registered/discipline:

Not Applicable


Other experience and qualifications relevant to the proposed Project:

Ms. Triche serves as a Project Control Specialist at HDCA, responsible for financial and document controls for various projects. Ms. Triche has been responsible for the accounting management of task orders for The SBSA Group, HDCA's Joint Venture company. Additionally, Ms. Triche has skillfully managed the financial reporting aspect of the firm's involvement in the program management of the FEMA-funded hurricane recovery of St. Bernard Parish since the program's inception.

Hurricane Recovery Administrative & Program Management, St. Bernard Parish, LA. Ms. Triche is serving as document control coordinator for the management of FEMA – funded recovery projects in St. Bernard Parish, Louisiana. Ms. Triche's duties include the logging and tracking of incoming documents, distribution of documents to the appropriate Program Manager or Parish Personnel, preparation and maintenance of Project Worksheet Files to ensure that all are ready for closeout, and invoice tracking. Ms. Triche's challenging role includes the tracking and maintenance of documents for over 550 individual projects. (ongoing)

SBSA Task Orders 3, 7, 8, 9, 11, 13, 50, 64, 87, 92, 97. Ms. Triche oversaw billing and invoicing for these task orders for the U.S. Army Corps of Engineers (USACE). These "Staff Extension" Task Orders required detailed invoicing and accounting procedures, and Ms. Triche was responsible for overseeing and coordinating all invoicing activities for multiple staff extension personnel in accordance with USACE standards. (2015)

TEC Professional Services Questionnaire

KEY PERSON, SPECIALIST, OR INDIVIDUAL CONSULTANT
Name & Title:
Jason Guy <i>Construction Project Manager (Contractor)</i>
Project Assignment:
Construction Phase Services
Name of Firm with which associated:
 H. Davis Cole & Associates, LLC
Years' experience with this Firm:
<i>Contractor (Since 2015)</i>
Education: Degree(s)/Year/Specialization:
B.S., 1995, Civil Engineering, Louisiana State University
Active Registration: Year first registered/discipline:
Not Applicable
Other experience and qualifications relevant to the proposed Project:
<p>Mr. Guy has a Bachelor of Science degree in Civil Engineering and over two decades of experience providing construction management, program management, estimating, quality control, surveying and design service for governmental and municipal infrastructure projects. He specializes in the construction administration of general municipal and private projects and has participated in the design of a wide variety of projects. Mr. Guy has been instrumental in the successful construction management of federally funded projects including the recovery efforts following Hurricanes Katrina & Rita in St. Bernard Parish, Louisiana.</p> <p>CONSTRUCTION PROGRAM MANAGEMENT</p> <p>Roadway Rehabilitation Program, St. Bernard Parish Government, LA. As a Construction Manager for the Roadway Rehabilitation Program, Mr. Guy has assisted in identifying and justification of additional eligible storm damage throughout both the design phase and construction phase for FEMA assessment. Mr. Guy has facilitated the resolution of construction-related field issues with third-party architects and engineers, contractors, and St. Bernard Parish Government. Mr. Guy works to ensure construction schedules are followed and maintained. Mr. Guy has also served as an Owner's Representative to address and resolve resident complaints related to the construction activities. (Ongoing)</p> <p>Task Order No. 3 - JIRR Program Assessment, Department of Public Works, City of New Orleans, LA. HDCA, as part of a Joint Venture with CSRS, Inc., provided the City of New Orleans' Public Works Department with an overall assessment of the FEMA-funded Joint Infrastructure Road Recovery (JIRR) Project. The assessment included the overall evaluation of ongoing roadway projects, department manpower, management costs, operating procedures, construction market and vendor capacity, as well as recommendations to ensure successful JIRR program compliance in accordance with federal, state and city requirements. Mr. Guy was embedded within the Department to observe day-to-day operations and develop tailored recommendations aimed at improving the efficiency of the program's delivery. (2019)</p> <p>Canal Crossing Projects, St. Bernard Parish Government, LA. Mr. Guy's duties included, but were not limited to, acquiring scope approval and funding authorization for project eligibility from FEMA (developing a Project Worksheet), facilitating proper procurement for A/E and construction services, identifying and justifying additional eligible storm damage throughout both the design phase and construction phase for FEMA assessment (versioning a Project Worksheet), reviewing, analyzing cost, a processing of contract amendments and change orders, processing all applications for payment while assuring compliance with State guidelines and FEMA eligibility. He was also responsible for holding regularly scheduled progress meetings with the A/E, contractor, and Owner during the construction phase, facilitating resolution of construction-related field issues with A/E, contractor, and Owner, serving as an Owner's representative to address and resolve resident complaints related to the construction activities, ensuring construction schedules are followed and maintained, performing regular site visits and project</p>

TEC Professional Services Questionnaire

Jason Guy *continued*

walk-throughs as part of invoicing and change order reviews, tracking all project-related costs and billings, facilitating project close-out for both construction and grants management (maintain project files and transmittals), reporting on a weekly basis updated project summaries for the Parish President. (Ongoing)

Program Management Services for FEMA Funded Capital Repairs – Gravity Sewer Repairs, Department of Public Works, St. Bernard Parish, LA. Mr. Guy also handled the oversight of the cleaning, video inspection, and lining of approximately 500,000 linear feet of gravity sewer lines and approximately 1,500 manholes damaged by Hurricane Katrina in 2005. His responsibilities included coordination with State and Federal FEMA officials, scope alignment, tracking, and management of project worksheets and versions, and determination and inspection of uncaptured damages. During Mr. Guy's tenure of oversight, the project has been increased from zero Federally-obligated funding to a \$48 M program. (Ongoing)

DOTD Submerged Roads Program - St. Bernard Parish Street Rehabilitation Program, St. Bernard Parish, Chalmette, LA. HDCA served as a subconsultant to Digital Engineering and Imaging Inc. for this DOTD Submerged Roads Program project. HDCA provided Construction Engineering and Inspection (CE&I) services for this Parish-wide, multi-street project. The construction consisted of clearing and grubbing, grading, cold planing asphaltic concrete, and pavement patching. Materials utilized included Class II Base course, Superpave asphaltic concrete overlay, Superpave asphaltic concrete pavement, and Portland Cement Concrete Pavement. Mr. Guy represented HDCA both in the field and at construction progress meetings and was heavily involved in daily CE&I activities. Construction has been completed and the project is awaiting closeout. (ongoing)

City of Central Flood Recovery, Project Management and Funding Management Program, City of Central, LA. A team of HDCA and CSRS, Inc. staff members worked together to assist the City of Central following the devastating 1,000-year flood that impacted residents in August 2016. Our team assisted the City with program management, funding decisions, and the development of processes needed to expedite the obligation of disaster relief funding. Mr. Guy provided technical assistance in conducting damage assessments and cost estimates for the program. (2019)

FEMA Public Assistance Funding Arbitration for St. Bernard Parish's Drainage System, St. Bernard Parish, LA. HDCA personnel continue to support St. Bernard Parish Government as they recover from the damage sustained by Hurricanes Katrina and Rita. After years of preparation and field investigations, in November of 2018, HDCA personnel accompanied St. Bernard Parish officials to Washington D.C. to argue for FEMA Public Assistance funding for damage sustained to the Parish's drainage infrastructure. Mr. Guy testified as a subject matter expert on the damaged drainage system in St. Bernard. The requested funds would have supported the repair of damaged outfall locations and storm drain lines which occurred as a result of the floodwaters and the post-disaster recovery operations. The alleged damage to their drainage system includes:

- 386 identified disaster damaged drainage outfall locations (out of a total of 680 total drainage outfalls in St. Bernard Parish) which were damaged as a direct result of the removal of Katrina debris and silt from the canals which convey water to the pumping stations. The team argued that the visible damage was caused by excavators, long reach excavators, and barges utilized in the removal of debris from the area, as well as the actual floodwater and debris itself.
- Over 200,000 lf of storm drain lines which are still so clogged with debris from the storm they're unable to be cleaned or CCTV'd to assess the damage. The damaged drain lines have led to other issues including ponding water, blockages, sinkholes, collapsing sidewalks, and collapsing street panels.

Due to HDCA's involvement in St. Bernard's recovery from the beginning, HDCA staff members were able to provide expert witness testimony to support the Parish's request. The total request was for over \$200 million. (2018)

ROADWAY & TRANSPORTATION PROJECTS

Engineering Staff Augmentation, Department of Public Works, City of New Orleans, LA. HDCA, as part of a Joint Venture with CSRS, Inc., recently assisted the City of New Orleans Department of Public Works through engineering staff augmentation for project management, design engineering, construction management, and cost estimating. Tasks included contract administration, design oversight and review to ensure compliance with DPW, LDOTD, FHWA, FEMA, EHP and railroad design guidelines, oversight of permitting activities, coordination with other agencies, review of construction documents, as well as the preparation of independent cost estimates and analyses of proposals for design services, construction estimates, and field changes. Mr. Guy reviewed plans and provided design oversight for the project. (2018)

Rehabilitation of Runway 10-28, New Orleans Aviation Board, Louis Armstrong New Orleans International Airport, Kenner, LA. Mr. Guy estimated and managed the construction of the \$65M project to rehabilitate Runway 10-28. Reconstruction of the 10,000 ft. runway included removal and replacement of full strength runway and connecting taxiway pavement, replacement of runway and taxiway lighting systems, upgrading the airfield lighting control system, construction of three new canal enclosures, replacement of one canal culvert under the runway, and site grading and drainage improvements. (Independent Experience)

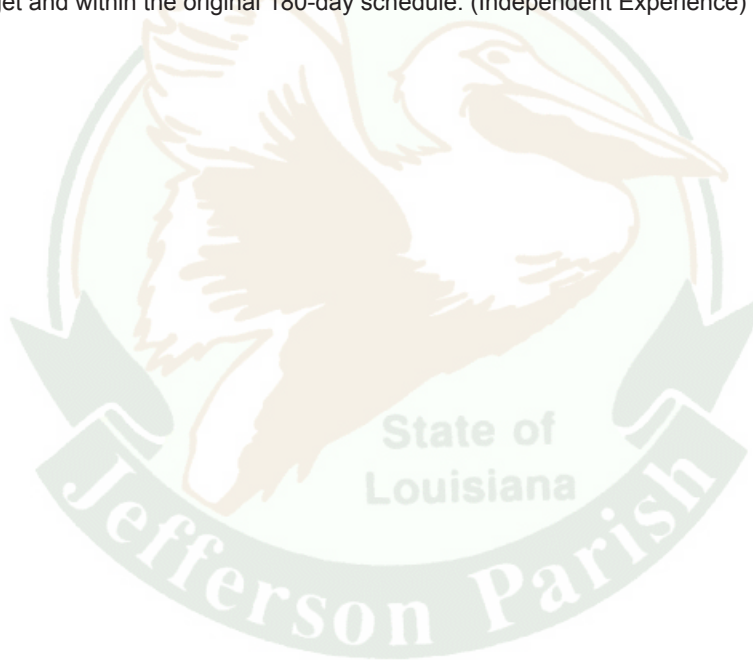
TEC Professional Services Questionnaire

Jason Guy
continued


Napoleon Avenue Wharf Terminal and Yard Improvements, Port of New Orleans, LA. Mr. Guy estimated and managed the construction of the Napoleon A/B yard improvement project. Scope of project included extensive site-work, rail track relocation, subsurface drainage, structural concrete trench drains, drainage pump station and approximately 12 acres of 18-inch pcc pavement. (Independent Experience)

Tchoupitoulas Corridor Improvements (Calliope Street to Felicity Avenue), City of New Orleans, LA. Mr. Guy estimated and managed the construction of the Tchoupitoulas Corridor project. Scope of project included drainage, sewer and water reconstruction as well as two roadways with two lanes moving in each direction (sand and stone base w/11-inch pcc pavement). (Independent Experience)

Runway 1-19 Rehabilitation, New Orleans Aviation Board, Louis Armstrong New Orleans International Airport, Kenner, LA. Prior to working with HDCA, Mr. Guy managed the team responsible for demolition and reconstruction of the 7,000 ft. Runway 1-19 at New Orleans International Airport. The \$25M project included removal and replacement of existing runway and parallel taxiway, construction of new taxiway connector and hold apron, airfield lighting, signage and drainage. Construction phasing required at this two-runway airport included a 20-day relocation of Runway 10-28 threshold to allow demolition and reconstruction of 1000 ft. of Runway 1-19 pavement in the ILS Critical Areas and Runway 10-28 Approach. The project also involved the special construction of a new taxiway and hold apron which included the use of expanded polystyrene blocks to minimize differential settlement of new pavement built adjacent to existing pavements. Under Mr. Guy's management, the project was completed under budget and within the original 180-day schedule. (Independent Experience)



TEC Professional Services Questionnaire

KEY PERSON, SPECIALIST, OR INDIVIDUAL CONSULTANT
Name & Title:
Stephen R. Braquet, AIA, NCARB <i>Architect (Contractor)</i>
Project Assignment:
Professional in Charge
Name of Firm with which associated:
 H. Davis Cole & Associates, LLC
Years' experience with this Firm:
<i>Contractor</i>
Education: Degree(s)/Year/Specialization:
Associate of Architectural Engineering, 1979, Architecture, Delgado College Bachelor of Architecture, 1984, Architecture, University of Louisiana at Lafayette
Active Registration: Year first registered/discipline:
1992, Architecture, Louisiana, 4433 (also licensed in Texas, Tennessee, and South Carolina)
Other experience and qualifications relevant to the proposed Project:
<p>Stephen Braquet founded, Braquet Design Group Architects + Consultants, LLC. (BDG), where he primarily works on projects as an architect, project manager, construction manager and utilizes his design and construction administration experience for consulting on construction, roofing, waterproofing and building envelope related projects.</p> <p>Stephen has over 40 years of experience in design, project management, construction administration and has worked on a variety of building occupancy types in the commercial, governmental, institutional and industrial sectors throughout his career. He has always worked on projects with the clients' vision, schedule and budget while achieving the end result in mind. Stephen also serves as a legal expert in the field of architecture, construction issues, roofing waterproofing and building envelope issues and ADA related issues.</p> <p>Stephen is a national accredited licensed Architect. He is currently licensed in Louisiana, Texas, Tennessee and South Carolina. Stephen is also a Registered Roof Observer (RRO) and consultant with the IIBEC (formerly the RCI). Stephen obtained his Bachelor of Architecture from the University of Louisiana at Lafayette and also holds a degree in Architectural Engineering from Delgado College. As an active member in the American Institute of Architects (AIA), Stephen has served as president of AIA New Orleans in 2006 immediately after Hurricane Katrina and led the New Orleans board and the membership to an enhanced AIA chapter with accelerated programs and visibility for the profession of architects in the recovery region. In addition, Stephen has also served in multiple positions on the Louisiana State AIA Board.</p> <p>RELEVANT PROJECT EXPERIENCE</p> <p>Reroofing and Waterproofing of the Lengsfeld Lofts, New Orleans, LA. Provided architectural, roofing, waterproofing and building envelope consulting for the renovation of the entire building envelope on an early 1900 converted warehouse. The existing roof was replaced with a roof hurricane rated deck paver system on top of a TPO membrane roof system. The masonry building was also waterproofed and coated completely. Total Project Cost: \$1.4M, Role: Architect/Consultant</p>

TEC Professional Services Questionnaire

Stephen Braquet, AIA, NCARB

continued

IDIQ Program Manager/Project Administrator for Non-Flood Orleans Levee District, New Orleans, LA. Provided Architectural Code and Quality Control Review as a consultant to Stuart Engineering Consulting Group of multiple projects, James Mitchell Hangar, Walter Wedell Hangar, Lakefront Terminal interior renovation and Lakefront Shelters for ADA accessibility. Total Project Cost: \$30M to \$40M, Role: Architect Plan Reviewer for Owner-LH&J

Fire-Keepers Casino, Battle Creek, MI. Provide full design and construction administration services for the programming, design with a GMP for a negotiated contractor and a hyper fast tract design build construction period of 12 months. The casino complex consisted of a 270,000 square gaming footprint and a 5 story parking deck located on an 80 acre site. A TPO roof system was installed with a synchronized gravity fed internal drainage system. All infrastructure was remote and had to be brought to the site. There were 114 sub consultants which ranged from highly technical such a gaming coordination to others as kitchen equipment consultants. The venue had five different eating establishments and a fully operational back of house including offices and warehouses. Total Project Cost: \$370M, Role: Project Architect/ Manager

Safe Houses, Lake Borgne Levee District, St. Bernard Parish, LA. Programmed and designed safe houses for pump station personnel in accordance with FEMA 361 Standards to meet 250 mph wind requirements. The rood systems were coordinated in advance to meet the high wind requirements Three (3) separate safe houses for Pump Stations No. 6, 7 and 8 with sleeping quarters, kitchenette, restroom with shower for up to 10 people in each facility. Total Project Cost: \$2.3 Million. Role: Project Architect, Roofing, Waterproofing Consultant.

Port of New Orleans, New Orleans, LA. Wharf Warehouse Hurricane Katrina / Gustav assessments and Roof Replacement projects. Remediation design which included retrofit roofing on fully functional occupied buildings for several wharf shed roofs i.e. Harmony Street repair, Louisiana Street, Seventh Street, France Road Berth 6 Terminal, & First Street 6 million square feet of roofing. Total Project Cost: \$10M, Role: Project Architect/Project Manager/Roofing Waterproofing consultant.

Plan Review, Code, Zoning and Regulatory Review:

- **Certified Building Official, City of Harahan, Harahan, LA.** Role: Plan review for compliance and permit issuance.
- **Firekeepers Casino Code Compliance Review, Battle Creek MI.** Role: Code and zoning review for a Las Vegas-style 88-acre casino due to the Reservation being a sovereign nation.
- **Non-Flood Orleans Levee District, New Orleans, LA.** Role: Building code review consultant for all Post-Katrina facilities due to the Levee Board having its own regulatory district.
- **Jefferson Parish School District, Jefferson Parish, LA.** Role: Owner plan review of all school related projects submitted by outside consultants.

Residential/Multi-Family:

- **Esplanade Guest House, New Orleans, LA.** Role: Code Consulting to turn an apartment building in to a 9-unit bedroom principal bed and breakfast single family residence.
- **232 Decatur Reroofing, New Orleans, LA.** Role: VCC coordinated exterior Waterproofing/roofing projects for a 6-story multi-family condo.
- **Balcony Guest House, New Orleans, LA.** Role: Assist the Owner to remove a stop work order with New Orleans Safety and Permits department.
- **Lengsfeld Lofts Reroof, Waterproof and Storm Drainage, New Orleans, LA.** Role: Provide building assessment and architectural services to rehabilitate the exterior building shell

Building Site and Renovation:

- **Pontchartrain Levee District Maintenance Facility - Re-Roof, Lighting, and Site Improvements, Convent, LA** Role: Project Manager.
- **Port of New Orleans including First Street, Seventh Street, Governor Nicholls Street, and Louisiana Avenue Wharf Warehouse and Roof Repairs.** Role: Project Manager
- **Port of New Orleans Esplanade Avenue Overhead Door Replacement.** Role: Project Manager
- **Renovations to the Culinary Arts Department at Bonnabel High School, Metairie, LA** Role: Project Manager
- **Plaquemines Parish Law Enforcement District Administration and Training Facility, Belle Chasse, LA.** Role: Project Manager
- **City of Kenner Parks and Recreation FEMA Project Worksheet Project Management, Various Sites, Kenner, LA.** Role: Project Manager
- **Renovations to Orleans Pump Stations 4, 13, 17, and 19, New Orleans, LA.** Role: Project Manager

Community Centers:

- **Westwego Community Center – Westwego, LA.** Role: Project Architect, Meyer Engineers, LTD
- **Renovate/Upgrade an Existing Community Center for the Jefferson Parish Housing Authority – Marrero, LA.** Role: Project Architect, Meyer Engineers, LTD

TEC Professional Services Questionnaire

Stephen Braquet, AIA, NCARB

continued

Courthouses:

- **Algiers Courthouse Structural Analysis, New Orleans, LA.** Role: Project Manager
- **Plaquemines Parish Courthouse - East Point a la Hache, Plaquemines Parish, LA.** Role: Project Manager
- **Renovations to the St. Tammany Parish Justice Center and Public Defenders Office, Covington, LA.** Role: Project Manager
- **Slidell Courthouse Leak Investigation, Slidell, LA.** Role: Project Architect, Meyer Engineers, LTD

Detention/Correctional Facility:

- **Port Sulphur Lock Up, Domestic Violence and Marine Division Consolidated Facility, Port Sulphur, LA.** Role: Project Manager
- **New Orleans Criminal Courts Waterproofing, New Orleans, LA.** Role: Project Architect, The Mathes Group

Historic Restorations:

- **Former Baton Rouge Junior High School Building Waterproofing, Baton Rouge, LA.** Role: Restoration Expert/Project Manager
- **Historic Fence and Gatehouse Repairs, Jackson Barracks, New Orleans, LA.** Role: Restoration Expert/Project Manager, Perez, APC
- **701 Condominiums, New Orleans, LA.** Role: Restoration Expert/Project Manager, Perez, APC
- **Newcomb's Mother House, New Orleans, LA.** Role: Restoration Expert/Project Manager, The Mathes Group
- **Holy Name Church, Loyola university Campus, New Orleans, LA.** Role: Restoration Expert/Project Manager, The Mathes Group
- **New Orleans Criminal Courts Waterproofing, New Orleans, LA.** Role: Restoration Expert/Project Architect, The Mathes Group
- **New Orleans Center for the Creative Arts, New Orleans, LA.** Role: Restoration Expert/Design Team Member, The Mathes Group

Hospital/Medical Facilities:

- **Multiple Hospital Addition, Renovations and Modifications, Touro Infirmary, New Orleans, LA.** Role: Architect, The Mathes Group
- **Multiple Hospital Addition, renovation and Modifications, Baptist Hospital, New Orleans, LA.** Role: Architect, The Mathes Group
- **Multiple Hospital Addition, Renovations and Modifications, Mercy Hospital, New Orleans, LA.** Role: Architect, The Mathes Group
- **Montelepre Hospital, New Orleans, LA.** Role: Architect, The Mathes Group

Libraries/Museums:

- **Lafitte Multipurpose/Community Center/Library, Lafitte, LA.** Role: Project Architect, Meyer Engineers, LTD - CDBG Funding
- **New Orleans Saints Hall of Fame, Kenner, LA.** Role: Project Architect, Meyer Engineers, LTD
- **Sydney & Wanda Bestoff Sculpture Garden Repair of Katrina Damages, City Park, New Orleans, LA.** Role: Project Manager, Perez, APC
- **Louisiana Fishers Museum, Lafitte, LA.** Role: Project Architect, Meyer Engineers, LTD

Natatoriums, Pools/Pool Systems:

- **Renovations to the Behrman Pool Facility, New Orleans, LA.** Role: Project Manager
- **Joe W Brown Swimming Pool Renovations, New Orleans, LA.** Role: Project Manager
- **LSU Natatorium Renovations and Repairs, Baton Rouge, LA.** Role: Project Manager
- **New Orleans Aquarium, New Orleans, LA.** Role: Design Team Member, The Mathes Group

New Construction:

- **City Park Maintenance Facility, New Orleans, LA.** Role: Project Manager
- **St. John the Baptist Parish Airport Terminal Building, Reserve, LA.** Role: Project Manager
- **New Orleans Country Club Maintenance Building, New Orleans, LA.** Role: Project Manager
- **GIWW Safe House, New Orleans, LA.** Role: Project Manager
- **GIWW Control Rooms, New Orleans, LA.** Role: Project Manager
- **Bayou Bienvenue Control Rooms, New Orleans, LA.** Role: Project Manager
- **St. Bernard Safe Rooms, St. Bernard Parish, LA.** Role: Project Manager
- **Westwego Town Square, Amphitheater – Westwego, LA.** Role: Lead Architect, Meyer Engineers, LTD
- **Westwego Performing Arts Theatre – Westwego, LA.** Role: Lead Architect, Meyer Engineers, LTD

TEC Professional Services Questionnaire

Stephen Braquet, AIA, NCARB

continued

Parks and Recreational Facilities:

- **City Park Maintenance Facility, New Orleans, LA.** Role: Project Manager
- **Joseph Bartholomew Golf Course, New Orleans, LA.** Project Manager/Architect, Perez, APC
- **Brechtel Park Golf Course Katrina Damage renovations, Algiers, LA.** Project Manager/Architect, Perez, APC
- **Boyet Jr. High School - Gym Floor Replacement, Slidell, LA.** Role: Project Manager
- **Renovations to the Old Wentwood Gym, Kenner, LA.** Role: Project Manager
- **Renovation/Replacement of the Buddy Lawson Grandstand, Kenner, LA.** Role: Project Manager
- **Westwego Town Square, Amphitheater – Westwego, LA.** Role: Lead Architect, Meyer Engineers, LTD
- **Multiple Multi-purpose facilities for the Jefferson Parish Recreation Department – Jefferson Parish, LA.** Role: Lead Architect, Meyer Engineers, LTD
- **Lafreniere Park Pavilion Renovation, Jefferson Parish, LA.** Role: Project Architect, Meyer Engineers, LTD
- **Lafreniere Park Conference Center Renovation, Jefferson Parish, LA.** Role: Project Architect, Meyer Engineers, LTD
- **LaSalle Park Master Plan and Implementation of Multiuse Recreation Facility (Baseball/Softball/Soccer/Running Track), Metairie, LA.** Role: Project Architect, Meyer Engineers, LTD
- **Louis J Roussel Planetarium, Kenner, LA.** Role: Project Manager, Meyer Engineers, LTD

Police and Fire Stations:

- **Plaquemines Parish Law Enforcement District Administration and Training Facility, Belle Chasse, LA.** Role: Project Manager
- **St. Tammany Fire Protection District No. 1, Slidell, LA.** Role: Project Manager

Prefabricated Buildings:

- **St. Bernard Safe Rooms, St. Bernard Parish, LA.** Role: Project Manager

Roofing/Waterproofing:

- **Waterproofing and Repairs to Gretna Park Elementary School, Gretna, LA.** Role: Project Manager
- **Susan Park Gymnasium Roof Replacement, Kenner, LA.** Role: Roofing Expert Project Manager
- **Pontchartrain Center - Hurricane Isaac Repairs and Roof Replacement, Kenner, LA.** Role: Roofing Expert/Project Manager
- **Port of South Louisiana - Building 76 Roof Replacement, Reserve, LA.** Role: Roofing Expert/Project Manager

Sport Areas/ Athletic Fields:

- **New Orleans Hornets (Pelicans) Training and Locker Room Facility, Alario Center, Westwego, LA.** Role: Project Architect, Meyer Engineers, LTD
- **Alario Center Commercial Kitchen Expansion, Westwego, LA.** Role: Project Architect, Meyer Engineers, LTD
- **Pontchartrain Center - New Telescoping Seating, Kenner, LA.** Role: Project Manager
- **Segnette Field, Alario Center, Westwego, LA.** Role: Project Architect, Meyer Engineers, LTD
- **Pan American Stadium Hurricane Katrina Renovations New Orleans, LA.** Role: Project Architect, Perez, APC

TEC Professional Services Questionnaire

L. Work by Firm or Joint-Venture members which best illustrates current qualifications relevant to this Project. Please include any and all work performed for Jefferson Parish. Please attach additional pages if necessary.

PROJECT NO. 1

Project Name, Location and Owner's contact information:

Nature of Firm's Responsibility:

Rheem Building Improvements

Jefferson Parish, LA

Jefferson Parish
Department of Drainage
1221 Elmwood Park Blvd., Suite 907
Jefferson, LA 70123
Mitchell T. Theriot, P.E.
Director of Drainage
504-736-6753

HDCA provided engineering services for a rehabilitation of an existing building owned by the Jefferson Parish Drainage Department. The remodel included the build-outs of a dormitory and storage space from the existing building. The dormitory is a 2,800 sq ft free-standing structure consisting of sleeping and kitchen space for department employees who may need to shelter at the building to support the department during an emergency. The storage area is a build-out of an existing space to better serve the department as a protected area to store equipment and tools. The project was successfully bid, constructed, and the facility is currently in-use.



Build-out of the Rheem Building on the East Bank.

Completion Date (Actual or Estimated):

Estimated Cost:

Entire Project:

Work for which Firm was Responsible:

2020

\$522,000.00

\$43,000.00 (fee)

TEC Professional Services Questionnaire

L. Work by Firm or Joint-Venture members which best illustrates current qualifications relevant to this Project. Please include any and all work performed for Jefferson Parish. Please attach additional pages if necessary.

PROJECT NO. 2

Project Name, Location and Owner's contact information:	Nature of Firm's Responsibility:	
<p>Program Management for Critical Facilities Hardening</p> <p>Catahoula Parish, LA</p> <p>Catahoula Parish Police Jury P.O. Box 258 Harrisonburg, LA 71340 Rodney Sones Police Jury President 318-744-5435</p>	<p>HDCA served as Program Manager for the HMGP-funded storm hardening of four facilities in Catahoula Parish, Louisiana. The hazard mitigation project included installation of storm shutter systems and tornado safe rooms at the Parish Courthouse, Parish Maintenance Unit, and Parish Health Unit. Program Management Services included assisting in the procurement and management of architectural/engineering services, review of plans & specifications, management of pay requests, and overall grant management, including the preparation of reports & documentation required by State and Federal agencies.</p>	
<p>Completion Date (Actual or Estimated):</p> <p>2015</p>	Estimated Cost:	
	<p>Entire Project:</p> <p>\$1,300,000.00</p>	<p>Work for which Firm was Responsible:</p> <p>\$50,000.00 (fee)</p>



PROJECT NO. 3


Project Name, Location and Owner's contact information:	Nature of Firm's Responsibility:	
<p>Improvements to the Baton Rouge North Plant</p> <p>Baton Rouge City/Parish, LA</p> <p>CDMSmith (Prime Firm) 302 Main St., Suite 2244 Baton Rouge, LA 70802 David Peters, P.E. Project Manager 225-663-3034</p>	<p>HDCA served on the CDMSmith Team selected by the East Baton Rouge City-Parish Engineering Selection Committee to design improvements at the North Wastewater Treatment Plant. Generally, the scope of the project included a new preliminary treatment facility, rehabilitation of the existing primary settling tanks, modifications to the primary effluent pump station, rehabilitation of the existing trickling filters, dewatering building and sludge thickener system modifications, and associated yard piping, site, and electrical & controls improvements. HDCA was responsible for design of the HVAC and plumbing systems at the plant, as well as odor control piping.</p>	
<p>Completion Date (Actual or Estimated):</p> <p>2017</p>	Estimated Cost:	
	<p>Entire Project:</p> <p>\$45,000,000.00</p>	<p>Work for which Firm was Responsible:</p> <p>\$450,000.00</p>



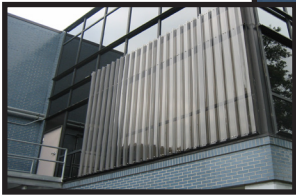

TEC Professional Services Questionnaire

L. Work by Firm or Joint-Venture members which best illustrates current qualifications relevant to this Project. Please include any and all work performed for Jefferson Parish. Please attach additional pages if necessary.

PROJECT NO. 4

Project Name, Location and Owner's contact information:	Nature of Firm's Responsibility:						
<p>Delacroix Island Pier: Fishing Complex & Assembly Complex</p> <p>St. Bernard Parish, LA</p> <p>St. Bernard Parish Department of Public Works 1125 E. St. Bernard Highway Chalmette, LA 70043 Matt Falati, P.E. Director of Public Works 504-278-4314</p>	<p>HDCA provided professional engineering services for the Pavilion and Dockside Improvements to the Delacroix Assembly Facility. The project included the preliminary and final design of the bulkhead & waterfront fishing pavilion, a mobile boat hoist system, travel crane platform, as well as overall site improvements including an access road. This project was designed on an accelerated schedule to ensure construction could be completed in time for St. Bernard Parish's "Blessing of the Fleet" to be held at the Pavilion. All phases of the project have been constructed and are currently in use. The pavilion is open to the public for boat blessings, private functions, and local seafood promotions.</p>  <p style="text-align: right;"><i>Completed Delacroix Island Assembly Complex</i></p>						
Completion Date (Actual or Estimated):	Estimated Cost:						
	<table> <tr> <th style="text-align: center;">Entire Project:</th><th style="text-align: center;">Work for which Firm was Responsible:</th></tr> <tr> <td style="text-align: center;">2017</td><td style="text-align: center;">\$180,000.00</td></tr> <tr> <td></td><td style="text-align: center;">\$50,000.00 (fee)</td></tr> </table>	Entire Project:	Work for which Firm was Responsible:	2017	\$180,000.00		\$50,000.00 (fee)
Entire Project:	Work for which Firm was Responsible:						
2017	\$180,000.00						
	\$50,000.00 (fee)						

PROJECT NO. 5

Project Name, Location and Owner's contact information:	Nature of Firm's Responsibility:						
<p>Hurricane Shutters for Popich Building</p> <p>Plaquemines Parish, LA</p> <p>Plaquemines Parish Government Engineering & Public Works 106 Avenue G Belle Chasse, LA 70037 Ken Dugas, P.E. Chief Engineer 504-297-5343</p>	<p>HDCA prepared plans & specifications and provided construction phase services for this hazard mitigation project which involved the installation of removable storm panels at the Plaquemines Parish Government Building. Services included development of plans & specifications, development of renderings of the installed panels, and construction administration. The project was funded through FEMA Hazard Mitigation Grant Funding. Construction was completed for \$335,000 which included an increase over the original grant amount, negotiated by HDCA.</p>  <p style="text-align: center;"><i>Close-up of the shutters</i></p>  <p style="text-align: right;"><i>After</i></p>						
Completion Date (Actual or Estimated):	Estimated Cost:						
	<table> <tr> <th style="text-align: center;">Entire Project:</th><th style="text-align: center;">Work for which Firm was Responsible:</th></tr> <tr> <td style="text-align: center;">2010</td><td style="text-align: center;">\$335,000.00</td></tr> <tr> <td></td><td style="text-align: center;">\$24,000.00 (fee)</td></tr> </table>	Entire Project:	Work for which Firm was Responsible:	2010	\$335,000.00		\$24,000.00 (fee)
Entire Project:	Work for which Firm was Responsible:						
2010	\$335,000.00						
	\$24,000.00 (fee)						

TEC Professional Services Questionnaire

L. Work by Firm or Joint-Venture members which best illustrates current qualifications relevant to this Project. Please include any and all work performed for Jefferson Parish. Please attach additional pages if necessary.

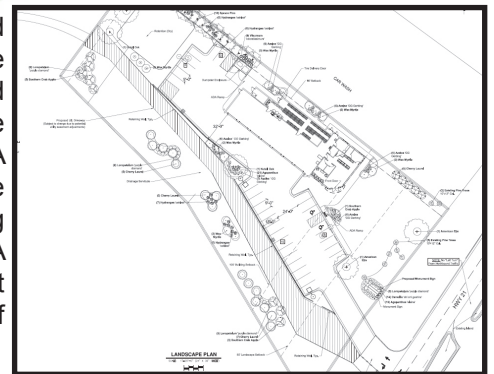
PROJECT NO. 6

Project Name, Location and Owner's contact information:	Nature of Firm's Responsibility:	
FEMA-Funded Hurricane Recovery and Restoration Projects - Program Management Services: Civic Center Renovation St. Bernard Parish, LA St. Bernard Parish Department of Public Works 1125 E. St. Bernard Highway Chalmette, LA 70043 Matt Falati, P.E. Director of Public Works 504-278-4314	The St. Bernard Civic Center is located at the intersection of West Judge Perez and Jean Lafitte, adjacent to the Parish Government complex. The Civic Center is comprised of two separated components, a full-service auditorium and ballroom. An accelerated, fast-tracked construction schedule was used to achieve the desired construction time frame of approximately 200 days and the renovation cost managed to meet the budgetary constraints. Prior to the Civic Center renovation project, the services of several other contractors were secured to perform required environmental, selective demolition, and miscellaneous work items. The services of these contractors were secured through purchase orders, letter bids, and/or construction contracts.	
Completion Date (Actual or Estimated):	Estimated Cost:	
	Entire Project:	Work for which Firm was Responsible:
2010	\$7,000,000.00	\$7,000,000.00



PROJECT NO. 7

Project Name, Location and Owner's contact information:	Nature of Firm's Responsibility:	
Goodyear Tire Store Site Design Covington, LA Embree Asset Group, Inc. 4747 Williams Drive Georgetown, TX 78633 Jeff Ferrell Design Manager 512-819-4754	H. Davis Cole & Associates provided civil and site design for Embree Development Group's proposed 6,500 square foot Goodyear Tire Store in Covington, Louisiana. HDCA provided site design, including site layout, grading, drainage, retaining wall and pavement design. HDCA also provided administrative support for the schematic and final design of the project.	
Completion Date (Actual or Estimated):	Estimated Cost:	
	Entire Project:	Work for which Firm was Responsible:
2015	\$1,200,000.00	\$25,000.00 (fee)



TEC Professional Services Questionnaire

L. Work by Firm or Joint-Venture members which best illustrates current qualifications relevant to this Project. Please include any and all work performed for Jefferson Parish. Please attach additional pages if necessary.

PROJECT NO. 8

Project Name, Location and Owner's contact information:

Nature of Firm's Responsibility:

Improvements to the Terrace Avenue WWTP

Slidell, LA

City of Slidell
Department of Engineering
P.O. Box 828
Slidell, LA 70459
Blaine Clancy, P.E.
City Engineer
985-646-4270

HDCA is providing engineering design services to implement mechanical, structural, and process improvements at the City's existing Terrace Avenue WWTP. HDCA had previously provided the City of Slidell with a structural and mechanical assessment of the various existing facilities at the Terrace Avenue Treatment Plant. The plant has an average daily flow of approximately 4.0 MGD and a peak hydraulic capacity of 15 MGD. HDCA worked closely with the Owner to assess various plant facilities including the headworks, grit removal system, primary clarifiers, secondary clarifiers, chlorination facility, spray water system, return activated sludge pump station, waste activated pump station, and in-house station. Proposed improvements at the plant were all structural and mechanical or civil in nature, including the renovation of buildings, platforms, stairwells and improvements to roofing configurations at multiple plant facilities. HDCA also prepared construction cost opinions and prepared an application for funding for future improvements through the EPA/LDEQ Clean Water State Revolving Loan Fund which was accepted for funding by LDEQ and EPA. The project was successfully bid and is currently under construction with HDCA providing daily resident project representation services and construction administration for the duration of the project.



Aerial views of the existing conditions of the City of Slidell's Terrace Avenue Wastewater Treatment Plant

Completion Date (Actual or Estimated):

Estimated Cost:

Entire Project:

Work for which Firm was Responsible:

2021 (E)

\$8,542,000.00

\$997,000.00 (fee)

TEC Professional Services Questionnaire

L. Work by Firm or Joint-Venture members which best illustrates current qualifications relevant to this Project. Please include any and all work performed for Jefferson Parish. Please attach additional pages if necessary.

PROJECT NO. 9

Project Name, Location and Owner's contact information:

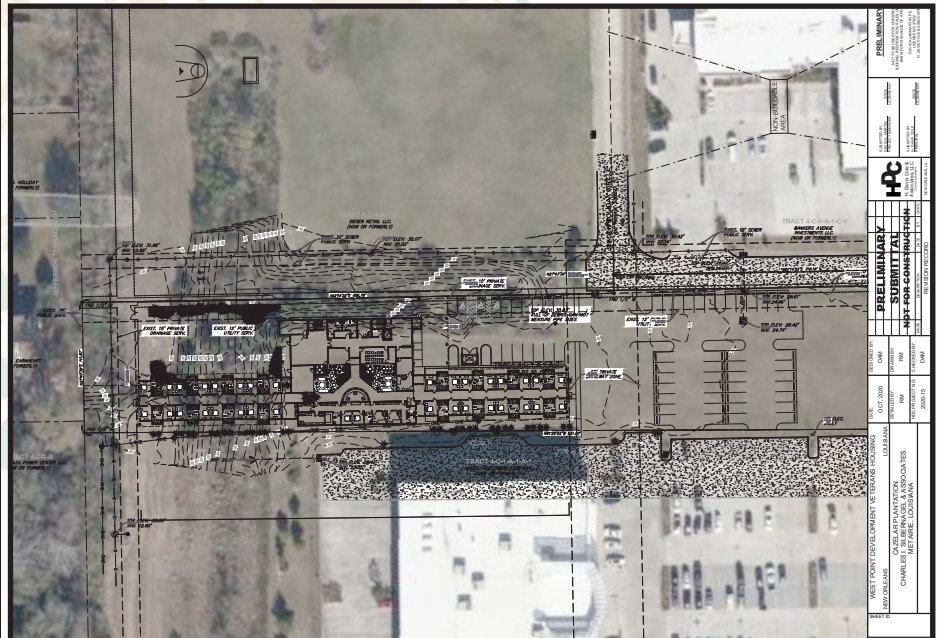
Nature of Firm's Responsibility:

Baton Rouge Adolescent Psychiatric Hospital

Baton Rouge, LA

MB Design Consultants
8841 Bluebonnet Boulevard
Baton Rouge, LA 70810
Jatinder Goel
Project Manager
225-612-3938

HDCA is currently providing civil engineering and permitting services for the development of a new 23,000 sq ft psychiatric hospital in Baton Rouge, LA. HDCA's services include the preparation of a Drainage Impact Study consisting of a detailed hydrologic and hydraulic analysis of the property as necessary for compliance with the Baton Rouge Unified Development Code. HDCA is also developing detailed construction plans for the on-site improvements, including the geometric layout; grading and drainage layout; paving details; and overall utility layout. HDCA is also providing permitting services as well as the Stormwater Pollution Prevention Plan (SWPPP) for the project.



Completion Date (Actual or Estimated):

Estimated Cost:

Entire Project:

Work for which Firm was Responsible:

2021 (E)

TBD

\$17,000.00 (fee)

TEC Professional Services Questionnaire

L. Work by Firm or Joint-Venture members which best illustrates current qualifications relevant to this Project. Please include any and all work performed for Jefferson Parish. Please attach additional pages if necessary.

PROJECT NO. 10

Project Name, Location and Owner's contact information:

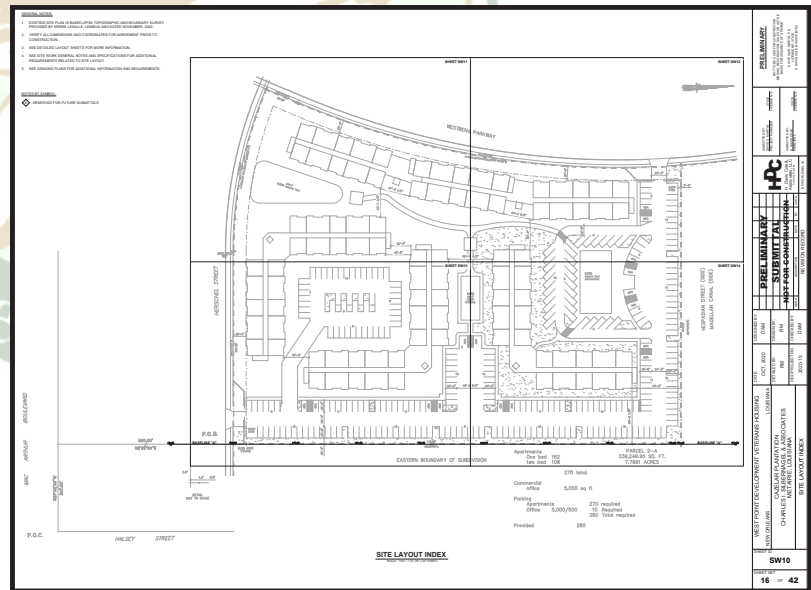
Nature of Firm's Responsibility:

West Point Development - Veterans Housing

New Orleans, LA

MB Design Consultants
8841 Bluebonnet Boulevard
Baton Rouge, LA 70810
Jatinder Goel
Project Manager
225-612-3938

HDCA is currently providing site design services for the development of a new housing development to benefit veterans of the United States Military in New Orleans. The development, which is situated on nearly 8 acres, will consist of 9 buildings with 30 apartment units each, as well as a 5,000 sq ft administration building and 288 parking spots. HDCA is preparing the formal drainage calculations and Stormwater Management Plan required to be submitted to the City of New Orleans as required for compliance with the City of New Orleans Stormwater Management Ordinance. Additional services include the development of civil and site construction documents which will consist of a site plan, grading and drainage plan, paving plan, sewer plan, water service plan, electrical plan, and associated detail drawings necessary for permitting and construction. Due to the large size of the development, HDCA will be responsible for the design of on-site stormwater retention facilities, as required. HDCA will also prepare a SWPP, Notice of Intent (NOI), and all additional permits required for coverage under the LDEQ LAR100000 permit.



Completion Date (Actual or Estimated):

Estimated Cost:

Entire Project:

Work for which Firm was Responsible:

2021 (E)

TBD

\$55,000.00 (fee)

TEC Professional Services Questionnaire

M. List all prior and/or on-going litigation between Firm and Jefferson Parish. Please attach additional pages if necessary.

Parties:		Status/ Result of Case:
Plaintiff:	Defendant:	
1.	HDCA has never been involved in litigation with Jefferson Parish.	
2.		
3.		
4.		

N. Use this space to provide any additional information or description of resources supporting Firm's qualifications for the proposed project.



FIRM HISTORY

HDCA was founded in 2006 and has rapidly grown to be a leader in providing exceptional client services to meet the public works engineering and environmental needs of municipal, governmental, and private sector clients through performance, quality, and teamwork. Our highly qualified team of motivated professionals provides a variety of services that include design, engineering and analyses, field investigations, construction management, construction inspection, computer modeling, environmental documentation, permitting, and regulatory support. For three years in a row (2016, 2017, 2018), HDCA was included in the 'LSU 100' which recognizes the fastest growing LSU-alumni-owned businesses in the world. Each year the award distinguishes one hundred successful entrepreneurs hailing from Louisiana State University who best embody the institution's values, character and leadership. HDCA was honored to be included in the list of accomplished local professionals. The company is licensed in the States of Louisiana, Mississippi, Texas and Florida with professional engineers registered in all four states, as well as Ohio. HDCA offices are located in Chalmette, Baton Rouge, and New Orleans, Louisiana. HDCA is certified under the Small Entrepreneurship Program as a Hudson Initiative Certified Firm by the Louisiana Department of Economic Development.

HDCA's staff members have an average of over 15 years of experience in Civil and Environmental Engineering, all of which is in the design and construction oversight of major infrastructure



TEC Professional Services Questionnaire

N. Use this space to provide any additional information or description of resources supporting Firm's qualifications for the proposed Project.

projects in an engineering consulting firm setting. The primary areas of expertise for the HDCA staff has been in the drainage, roadway, water and wastewater arenas. The vast majority of HDCA's workload has been in the federally funded capital repair sector, including program and project management, design, and eligibility assessment and inspection services. HDCA has also provided technical services to various industrial entities.

EVALUATION CRITERIA

1. Professional training and experience in relation to the type of work required for the routine engineering services:



HDCA has worked with almost every facet of the public sector and the private industry, serving individual clients with the utmost professionalism. The personnel at HDCA possess a wide range of experience in terms of both project type and magnitude. This is evidenced in the résumés of our key personnel provided within this Questionnaire.

HDCA possesses significant in-house capabilities, including Computer Aided Design and Drafting (CADD) capabilities using AutoCAD, MicroStation and structural and hydraulic modeling software. HDCA also possesses significant sewer and water modeling capabilities through Bentley SewerGEMS and expertise with EPANET.

HDCA is committed to maintaining the latest technology available to our profession to improve our ability to stay connected and accessible to our clients. We have all become experts at this skill-set over the course of the last year and we are committed to continuing to improve and evolve our technology. This commitment extends into the production aspects of our business by using technology to improve our work efficiency and accuracy. This commitment to technology also results in significant savings to our clients in both the schedule and budget.

To supplement our in-house staff capabilities and expertise, we maintain an extensive professional network and have maintained strong personal and professional relationships with large and small specialty firms that provide supporting services such as wetlands specialists, FEMA specialists, grant managers, electrical engineering, structural engineering, geotechnical engineering, environmental engineering, land surveying, and materials testing / inspections /construction quality control services, on whom we rely as needed to assist us in special design considerations that are outside our area of expertise. These relationships allow us to provide comprehensive, turn-key, engineering services to our clients. As required, we employ capable, experienced sub-consultants on an as needed basis for specialized tasks.

HDCA's proposed team's combined professional experience is depicted in the table below:

Specialty	Licensed Professional	Firm Associated	Highest Education	Years of Experience
Civil Engineering	H. Davis Cole, P.E. David A. Martin, P.E.		BSCE, 1998, Civil & Environmental, Louisiana State University BS, 2008, Civil Engineering, Louisiana State University	22 14
Architect	Stephen Braquet, AIA, NCARB		Associate of Architectural Engineering, 1979, Architecture, Delgado College Bachelor of Architecture, 1984, Architecture, University of Louisiana at Lafayette	42

2. Size of firm considering the number of professionals and support personnel required to perform the type of architectural or engineering tasks, including project evaluation, project design, drafting of technical plans, development of technical specifications and construction administration.

HDCA is certified under the Small Entrepreneurship Program as a Hudson Initiative Certified Firm by the Louisiana Department of Economic Development. HDCA has sufficient engineering personnel to support Jefferson Parish for the duration of any assigned project. Our personnel members are highly motivated, hard working, and professional. Our personnel pride themselves on delivering the highest level of professional services with a personalized level of detail and attention that may be missing from larger firms. We are invested in improving the community in which we live and work. HDCA is a full-service civil engineering firm, capable of providing design, drafting, project management, the development of construction documents, and the provision of construction administrative services all in-house.

TEC Professional Services Questionnaire

N. Use this space to provide any additional information or description of resources supporting Firm's qualifications for the proposed Project.

	<p>Minimum Requirements for Selection:</p> <p>1. The persons or firms under consideration shall have at least one (1) principal who is a licensed, registered, professional engineer in the State of Louisiana (Section C. of TEC Professional Services Questionnaire);</p> <p><i>This requirement is met by Mr. H. Davis Cole, P.E., the principal engineer of HDCA.</i></p> <p>2. The persons or firms under consideration shall have a professional in charge of the Project who is a licensed, registered, professional architect in the State of Louisiana with a minimum of five (5) years' experience.</p> <p><i>For any assigned architectural-engineering project, Mr. Stephen Braquet, AIA, NCARB a contract employee, will serve as the professional in charge of the project and oversee the project's design. Mr. Braquet is an accomplished architect with over 40 years of residential, industrial, and municipal experience.</i></p> <p>3. The persons or firms under consideration shall have one (1) employee who is a licensed, registered, professional engineer, surveyor or landscape architect in the State of Louisiana in each of the applicable disciplines involved. A subcontractor may meet this requirement since the advertised Project involves more than one discipline (Section D. of TEC Professional Services Questionnaire).</p> <p><i>This requirement is met by both of HDCA's professional civil engineers: Mr. H. Davis Cole, P.E. and Mr. David Martin, P.E., both of whom are licensed professional engineers in the State of Louisiana.</i></p>																										
<p>3. Capacity for timely completion of newly assigned work, considering the factors of type of routine architectural or engineering task, current unfinished workload, and person or firm's available professional and support personnel.</p>	<p>Based on the firm's current and expected project workload and schedule, HDCA is capable of allocating the necessary resources and manpower required to support Jefferson Parish for the duration of any assigned architectural or engineering project. The contract and project management philosophy of HDCA is to maintain a strong working relationship with the client to protect your interests and accomplish project goals in a cost effective, responsive, and responsible manner. These interests and goals are to produce and deliver the highest quality projects that are welcomed by all stakeholders, and are technically and environmentally sound, affordable and completed within the project schedule.</p> <p>HDCA personnel are adept at managing multiple projects in varying phases of design and construction at any given time. This is accomplished through clear communication of goals and expectations with our clients at every phase.</p> <p>Current projects being currently undertaken for Jefferson Parish include:</p>																										
<table border="1" style="width: 100%; border-collapse: collapse;"> <thead> <tr style="background-color: #2e3192; color: white;"> <th style="width: 60%;">Project Name</th><th style="width: 40%;">Stage</th></tr> </thead> <tbody> <tr style="background-color: #d3d3d3;"> <td><i>Avondale North Sewer Lift Station (F-10-1)</i></td><td><i>Dormant</i></td></tr> <tr> <td>Improvements to the "Rheem" Building</td><td>Construction Completed</td></tr> <tr> <td>Bayou Segnette DPS No. 1 Bridge & Climber Screen</td><td>Construction Phase</td></tr> <tr> <td>Brown Avenue Canal Improvements</td><td>Phase I: Completed Phase II: Construction</td></tr> <tr> <td>Ehret & Broas Lift Station</td><td>Design Phase</td></tr> <tr> <td>Metairie Road Smart Growth - Causeway Interchange</td><td>Design Phase</td></tr> <tr> <td>N. Hullen Street Drainage Improvements</td><td>Final Design Phase</td></tr> <tr> <td>Harvey Area Revitalization Study</td><td>Study Phase</td></tr> <tr> <td><i>Cousins Blvd. Extension (Sub Consultant for Construction Administration)</i></td><td><i>Not Started</i></td></tr> <tr> <td><i>Avondale Library Project (Sub Consultant for Structural and Civil Design)</i></td><td><i>Not Started</i></td></tr> <tr> <td><i>W. Napoleon Avenue Extension to Airport Rd. (Sub Consultant)</i></td><td><i>Not Started</i></td></tr> <tr> <td><i>W Ames Blvd (Sub Consultant for Construction Administration)</i></td><td><i>Not Started</i></td></tr> </tbody> </table>		Project Name	Stage	<i>Avondale North Sewer Lift Station (F-10-1)</i>	<i>Dormant</i>	Improvements to the "Rheem" Building	Construction Completed	Bayou Segnette DPS No. 1 Bridge & Climber Screen	Construction Phase	Brown Avenue Canal Improvements	Phase I: Completed Phase II: Construction	Ehret & Broas Lift Station	Design Phase	Metairie Road Smart Growth - Causeway Interchange	Design Phase	N. Hullen Street Drainage Improvements	Final Design Phase	Harvey Area Revitalization Study	Study Phase	<i>Cousins Blvd. Extension (Sub Consultant for Construction Administration)</i>	<i>Not Started</i>	<i>Avondale Library Project (Sub Consultant for Structural and Civil Design)</i>	<i>Not Started</i>	<i>W. Napoleon Avenue Extension to Airport Rd. (Sub Consultant)</i>	<i>Not Started</i>	<i>W Ames Blvd (Sub Consultant for Construction Administration)</i>	<i>Not Started</i>
Project Name	Stage																										
<i>Avondale North Sewer Lift Station (F-10-1)</i>	<i>Dormant</i>																										
Improvements to the "Rheem" Building	Construction Completed																										
Bayou Segnette DPS No. 1 Bridge & Climber Screen	Construction Phase																										
Brown Avenue Canal Improvements	Phase I: Completed Phase II: Construction																										
Ehret & Broas Lift Station	Design Phase																										
Metairie Road Smart Growth - Causeway Interchange	Design Phase																										
N. Hullen Street Drainage Improvements	Final Design Phase																										
Harvey Area Revitalization Study	Study Phase																										
<i>Cousins Blvd. Extension (Sub Consultant for Construction Administration)</i>	<i>Not Started</i>																										
<i>Avondale Library Project (Sub Consultant for Structural and Civil Design)</i>	<i>Not Started</i>																										
<i>W. Napoleon Avenue Extension to Airport Rd. (Sub Consultant)</i>	<i>Not Started</i>																										
<i>W Ames Blvd (Sub Consultant for Construction Administration)</i>	<i>Not Started</i>																										

TEC Professional Services Questionnaire

N. Use this space to provide any additional information or description of resources supporting Firm's qualifications for the proposed Project.	
4. Past Performance by person or firm on projects of or similar comparable size, scope, and scale.	<p>HDCA is proud of our relationship with Jefferson Parish, having served Jefferson Parish on a variety of infrastructure improvement projects over the course of the firm's existence. Individual personnel members have provided engineering services to the Parish prior to joining HDCA and we're dedicated to continuing to serve the Jefferson Parish community.</p> <p>HDCA's long-standing relationships with governmental agencies and clients is the key to our business' success. Please feel free to contact our major governmental and private clients, which include those listed below, regarding our past performance on engineering design and project management related projects.</p> <ul style="list-style-type: none"> • <i>Donald Bourgeois, Director of Capital Projects, 504-278-1593, St. Bernard Parish Government, Louisiana</i> • <i>Michael J. Enlow, Project Manager, 225- 450-1326, Ascension Parish Government, Louisiana</i> • <i>Blaine Clancy, P.E., City Engineer, 985-646-4270, City of Slidell, Louisiana</i> • <i>Donna O'Dell, P.E., PhD, Parish Engineer, 985-2552, St. Tammany Parish Government, Louisiana</i> <p>Additional references are available upon request.</p>
5. Location of the principal office where work will be performed.	<p>HDCA has three offices located throughout Southeast Louisiana in Chalmette, Baton Rouge and New Orleans. Our corporate headquarters is located in New Orleans at 1340 Poydras St., a very convenient location for quick access to Jefferson Parish. This proximity will allow our project managers and design team to be on-site at any Jefferson Parish assigned project quickly. We are also readily available to attend and assist with any meetings regarding the project, regardless of whether meetings are held at the project site or at a Jefferson Parish Government location.</p> <p>We're a local firm and our roots are firmly planted in the area. Our staff members will be dedicated to providing the highest level of professional services to ensure the integrity of any Jefferson Parish assigned project.</p>
6. Adversarial legal proceedings between the Parish and the person or firm performing professional services, in which the Parish prevailed or any ongoing adversarial legal proceedings between the Parish and the person or firm performing professional services excluding those instances or cases where the person or firm was added as an independent party, or where the person or firm participated in or assisted the public entity in prosecution of its claim.	<p>HDCA has never been involved in litigation with Jefferson Parish.</p>
7. Prior successful completion of projects of the type and nature of routine engineering services, as defined, for which firm has provided verifiable references.	<p>HDCA staff members have a history of superior performance on contracts with government, state, and local agencies as well as within private industry. The firm has been routinely recognized by our governmental clients as extremely responsive and competent in the services that we have provided. Our personnel have a consistent track record of providing quality projects to clients within both schedule and budget. This is evidenced by our staff's long standing relationships and repeat business with clients including the City of Slidell, St. Bernard Parish and Jefferson Parish.</p> <p>The project which best demonstrates the firm's capabilities in regards to Architectural/ Engineering projects is the recent completion of the Improvements to the "Rheem" Building for the Jefferson Parish Drainage Department. HDCA provided design services for the build-out of the existing building to function as a dormitory space for use during emergencies, as well as safe storage of equipment. The HDCA team worked closely with the Drainage Department to ensure the overall design of the project met the specific needs of the department and we were careful to ensure the resulting space</p>

TEC Professional Services Questionnaire

N. Use this space to provide any additional information or description of resources supporting Firm's qualifications for the proposed Project.

adhered to all applicable building and fire codes. HDCA personnel also provided daily resident project representation over the course of construction of the project, which was completed in late 2020.

Architectural-type design tasks are regularly encompassed within the scope of the firm's civil engineering projects. HDCA is currently renovating nearly the entire Terrace Avenue WWTP for the City of Slidell, which includes the replacement of numerous stairs, platforms, and roofs. HDCA personnel also routinely undertake HVAC system improvements such as the work undertaken for the Baton Rouge North WWTP. The firm is also capable of designing structural platforms and piers, as evidenced by the included Delacroix Assembly Center project for St. Bernard Parish, and the installation of raised industrial type buildings such as the replacement of the North and South Florrisant Drainage Pump Station in St. Bernard Parish. Please refer to Section L. of this SOQ for additional information regarding the firm's previous relevant project experiences.

We feel confident that our past successes depicted within this TEC Questionnaire have prepared our personnel to successfully complete any assigned architecture-type project that may be assigned by Jefferson Parish.



O. To the best of my knowledge, the foregoing is an accurate statement of facts.

Signature: H. Davis Cole **Print Name:** H. Davis Cole, P.E.

Title: Managing Member **Date:** January 19, 2021



The Louisiana Professional Engineering and Land Surveying Board
has the following information on file:

Name	Public Address
H. Davis Cole & Associates, LLC	1340 Poydras Street, Suite 1850 New Orleans, LA 70112

License/Certificate Information w/Supervision

License	Status	First Issuance Date	Expiration Date	Supervisor(s)	Supervisee(s)
EF. 003485	Active	05/30/2006	09/30/2022	Mr. David Alan Martin #PE.0037832-Active Mr. Howard Davis Cole #PE.0030219-Active	



HDAVI-1

OP ID: MM

CERTIFICATE OF LIABILITY INSURANCE

DATE (MM/DD/YYYY)

11/10/2020

THIS CERTIFICATE IS ISSUED AS A MATTER OF INFORMATION ONLY AND CONFERS NO RIGHTS UPON THE CERTIFICATE HOLDER. THIS CERTIFICATE DOES NOT AFFIRMATIVELY OR NEGATIVELY AMEND, EXTEND OR ALTER THE COVERAGE AFFORDED BY THE POLICIES BELOW. THIS CERTIFICATE OF INSURANCE DOES NOT CONSTITUTE A CONTRACT BETWEEN THE ISSUING INSURER(S), AUTHORIZED REPRESENTATIVE OR PRODUCER, AND THE CERTIFICATE HOLDER.

IMPORTANT: If the certificate holder is an ADDITIONAL INSURED, the policy(ies) must have ADDITIONAL INSURED provisions or be endorsed. If SUBROGATION IS WAIVED, subject to the terms and conditions of the policy, certain policies may require an endorsement. A statement on this certificate does not confer rights to the certificate holder in lieu of such endorsement(s).

PRODUCER Henry Insurance Service, Inc. 9624 Brookline Suite 200 Baton Rouge, LA 70809 Albert T. Scallan, AAI, CIC	225-927-0451 CONTACT NAME: Albert T. Scallan, AAI, CIC PHONE (A/C, No, Ext): 225-927-0451 FAX (A/C, No): 225-926-8510 E-MAIL ADDRESS: Al@henryinsuranceservice.com												
INSURER(S) AFFORDING COVERAGE													
INSURED H Davis Cole and Associates, LLC Davis Cole. 1340 Poydras St., Ste. 1850 New Orleans, LA 70112	<table border="1" style="width: 100%; border-collapse: collapse;"> <tr> <td style="width: 80%;">INSURER A : Ohio Security Insurance Co.</td> <td style="width: 20%;">NAIC # 24082</td> </tr> <tr> <td>INSURER B : Ohio Casualty</td> <td>19690</td> </tr> <tr> <td>INSURER C : Peleus Insurance Company</td> <td>34118</td> </tr> <tr> <td>INSURER D :</td> <td></td> </tr> <tr> <td>INSURER E :</td> <td></td> </tr> <tr> <td>INSURER F :</td> <td></td> </tr> </table>	INSURER A : Ohio Security Insurance Co.	NAIC # 24082	INSURER B : Ohio Casualty	19690	INSURER C : Peleus Insurance Company	34118	INSURER D :		INSURER E :		INSURER F :	
INSURER A : Ohio Security Insurance Co.	NAIC # 24082												
INSURER B : Ohio Casualty	19690												
INSURER C : Peleus Insurance Company	34118												
INSURER D :													
INSURER E :													
INSURER F :													

COVERAGES**CERTIFICATE NUMBER:****REVISION NUMBER:**

THIS IS TO CERTIFY THAT THE POLICIES OF INSURANCE LISTED BELOW HAVE BEEN ISSUED TO THE INSURED NAMED ABOVE FOR THE POLICY PERIOD INDICATED. NOTWITHSTANDING ANY REQUIREMENT, TERM OR CONDITION OF ANY CONTRACT OR OTHER DOCUMENT WITH RESPECT TO WHICH THIS CERTIFICATE MAY BE ISSUED OR MAY PERTAIN, THE INSURANCE AFFORDED BY THE POLICIES DESCRIBED HEREIN IS SUBJECT TO ALL THE TERMS, EXCLUSIONS AND CONDITIONS OF SUCH POLICIES. LIMITS SHOWN MAY HAVE BEEN REDUCED BY PAID CLAIMS.

INSR LTR	TYPE OF INSURANCE	ADDL INSD	SUBR WVD	POLICY NUMBER	POLICY EFF (MM/DD/YYYY)	POLICY EXP (MM/DD/YYYY)	LIMITS
A	X COMMERCIAL GENERAL LIABILITY <input type="checkbox"/> CLAIMS-MADE <input type="checkbox"/> OCCUR GEN'L AGGREGATE LIMIT APPLIES PER: <input type="checkbox"/> POLICY <input type="checkbox"/> PRO-JECT <input type="checkbox"/> LOC OTHER:	X	X	BKS56675885	06/30/2020	05/01/2021	EACH OCCURRENCE \$ 1,000,000 DAMAGE TO RENTED PREMISES (Ea occurrence) \$ 1,000,000 MED EXP (Any one person) \$ 15,000 PERSONAL & ADV INJURY \$ 1,000,000 GENERAL AGGREGATE \$ 2,000,000 PRODUCTS - COMP/OP AGG \$ 2,000,000 \$
B	AUTOMOBILE LIABILITY <input type="checkbox"/> ANY AUTO OWNED AUTOS ONLY <input type="checkbox"/> SCHEDULED AUTOS <input checked="" type="checkbox"/> HIRED AUTOS ONLY <input checked="" type="checkbox"/> NON-OWNED AUTOS ONLY			BAS56675885	06/30/2020	05/01/2021	COMBINED SINGLE LIMIT (Ea accident) \$ 1,000,000 BODILY INJURY (Per person) \$ BODILY INJURY (Per accident) \$ PROPERTY DAMAGE (Per accident) \$ \$
B	X UMBRELLA LIAB <input checked="" type="checkbox"/> OCCUR EXCESS LIAB <input type="checkbox"/> CLAIMS-MADE DED <input checked="" type="checkbox"/> RETENTION \$ 10000	X	X	USO56675885	06/30/2020	05/01/2021	EACH OCCURRENCE \$ 4,000,000 AGGREGATE \$ 4,000,000 \$
A	WORKERS COMPENSATION AND EMPLOYERS' LIABILITY ANY PROPRIETOR/PARTNER/EXECUTIVE OFFICER/MEMBER EXCLUDED? (Mandatory in NH) <input type="checkbox"/> Y / N If yes, describe under DESCRIPTION OF OPERATIONS below		X	XWS56675885	06/30/2020	05/01/2021	<input checked="" type="checkbox"/> PER STATUTE <input type="checkbox"/> OTH-ER E.L. EACH ACCIDENT \$ 1,000,000 E.L. DISEASE - EA EMPLOYEE \$ 1,000,000 E.L. DISEASE - POLICY LIMIT \$ 1,000,000
C	Prof. Liability			121-AE0153629-01	09/01/2020	09/01/2021	Per Claim 2,000,000 Aggregate 2,000,000

DESCRIPTION OF OPERATIONS / LOCATIONS / VEHICLES (ACORD 101, Additional Remarks Schedule, may be attached if more space is required)

CERTIFICATE HOLDER**CANCELLATION**

SAMPLEE SAMPLE CERTIFICATE HOLDER	SHOULD ANY OF THE ABOVE DESCRIBED POLICIES BE CANCELLED BEFORE THE EXPIRATION DATE THEREOF, NOTICE WILL BE DELIVERED IN ACCORDANCE WITH THE POLICY PROVISIONS. AUTHORIZED REPRESENTATIVE
--	---

NOTEPAD

INSURED'S NAME H Davis Cole and Associates,

HDAVI-1
OP ID: MM

PAGE 2
Date 11/10/2020

GENERAL LIABILITY:

Additional Insured & Waiver of Subrogation, as required by written contract, in favor of certificate holder with respect to General Liability coverage.

WORKERS' COMPENSATION:

Waiver of Subrogation, as required by written contract, in favor of certificate holder with respect to Workers' Compensation.

UMBRELLA:

Umbrella is follow-form of the underlying coverage.

30 Day NOC, except 10 Day for non-payment.