

Jefferson Parish

**2 Year Contract for the Supply of
Residential Water Meters and
Assemblies for the Jefferson Parish
Department of Engineering**

BID No. 50-00116113

April 14th, 2016

Company Narrative

RG3 is a family owned company composed of a manufacturing division (Meter Company) and a service division (Utilities). Our legacy companies span back to 1950. Our service division has installed millions of meter system units of every manufacturer available in North America. Our manufacturing division uses that experience to produce the highest quality meter and automated meter reading systems possible.

American foundries pour the castings for our entire positive displacement meter line. All RG3 Tesla AMR & AMI systems and components are manufactured exclusively in our Texas facility, where we also build and test our meters. Our engineering staff are some of the most experienced in the water industry. This knowledge enables RG3 to fabricate some of the most sophisticated and cutting edge products available. Because quality control is paramount, all electronics are produced in house, by RG3 staff. Since customer service is part of our culture, the software architects that craft RG3 software remain on staff and are available for tier 3 customer support if necessary. There is never a question we can't answer or a level of support we cannot provide.

RG3 is the only company in North America that manufactures all aspects of a meter system, provides installation, and then provides support for the entire life of the system, completely in house. As the only "cradle to grave" turnkey solution in the market place, RG3 offers the highest level of accountability possible. Our experience with competitor technologies, as well as our own, also offers advantages to those who only have need of one RG3 division. In whatever application RG3 might be useful to your utility, we look forward to serving you.



Installation Projects Back to 2010 (List is not Comprehensive)

Proprietary Information

Project Description	Project Completion
Gretna (LA) 6,200 meters	Current Project
Pecos (TX) 4,000 meters	Current Project
Granite Shoals (TX) 2,600 meters	Current Project
Lucas (TX) 1,000 meters	Current Project
Jefferson (TX) 1,500 meters	Completed 2015
Panorama Village (TX) 1,800 meters	Completed 2015
Forney (TX) 1,200 meters	Completed 2015
Justin (TX) 1,300 meters	Completed 2015
B & B Water (TX) 692 meters	Completed 2015
T & W Water Conroe (TX) 2,500 retrofits	Completed 2015
Coral Springs (FL) 8,000 meters	Completed 2015
City of Porter (TX) 4,000 retrofits	Completed 2014
Cumby (TX) 466 meters	Completed 2014
Maloy (TX) 400 meters	Completed 2014
Town of Greenwood (LA) 2,500 retrofits	Completed 2014
City of White Oak (TX) 2,100 meters	Completed 2014
City of Winston-Salem (NC) 7,500 meters	Completed 2014
El Tanque Water System (TX) 630 meters	Completed 2014
City of Mart (TX) 850 meters	Completed 2014
Manville WSCorp (TX) 7,500 Meters	Completed 2014
City of Virginia Hills (TX) 1,200 meters	Completed 2013
North Richland Hills (TX) 1,000 meters	Completed 2013
Steamboat Springs (CO) 3,000 meters	Completed 2013

Project Description	Project Completion
Burnet (TX) 2,300 meters	Completed 2012
Tahlequah (OK) 6,200 meters	Completed 2012
Italy (TX) 900 meters	Completed 2012
Louisiana 7,000 meters	Completed 2012
Brownsville (TX) 11,000 meters	Completed 2012
City of Grove (OK) 10,500 meters	Completed 2012
City of Crosbyton (TX) 800 meters	Completed 2012
City of Laurinburg (NC) 8,600 meter replacement	Completed 2012
City of Highland Village (TX) 5,500 meter replacement	Completed 2012
Love County RWD (OK) 1,000 meter replacement	Completed 2012
City of Pottsboro (TX) 1,000 meter replacement	Completed 2011
City of Winston-Salem (NC) 5,000 meter replacement	Completed 2011
St. Mary's Parish (LA) 750 meter replacement	Completed 2011
S. W. Water Co 24 Systems (TX) 9,000+ meter replacements Cut in 2000+ new curb stops where none existed, relocation of services, system survey	Completed 2011
City of Splendora (TX) 1,700 meters	Completed 2011
City of Dorchester (TX) 670 meters	Completed 2010
City of Scottsville (TX) 650 meters	Completed 2010
Bolivar Peninsula SUD (TX) 3,100 meters	Completed 2010
City of Early (TX) 1,150 meters	Completed 2010
City of Winston-Salem (NC) 10,000 meters	Completed 2010
Brownsville PUB (TX) 12,000 meters	Completed 2010



Bid Number SQ-00116113

TWO (2) YEAR CONTRACT FOR THE SUPPLY OF RESIDENTIAL WATER
METERS AND ASSEMBLIES FOR THE JEFFERSON PARISH DEPARTMENT
OF ENGINEERING

BID DUE: THURSDAY, APRIL 14, 2016 AT 2:00PM

ATTENTION VENDORS!!!

Please review all pages and respond accordingly, complying with all provisions
in the technical specifications and Jefferson Parish Instructions for Bidders and
General Terms and Conditions. All bids must be received in the Purchasing
Department by the bid due date and time.

Jefferson Parish Purchasing Department
200 Derbigny Street
General Government Building, Suite 4400
Gretna, LA 70053
Buyer Name: Misty A. Camardelle Buyer
Email: mcamardelle@jeffparish.net
BuyerPhone: 504-364-2683

Two (2) Year Contract for the Supply of Residential Water Meters and Assemblies for the Jefferson Parish Department of Engineering

Items Included in this Contract:

1. Positive Displacement Meters (Sizes 5/8" X 3/4", 1" & 2")

Contract Terms:

These specifications are prepared for a two (2) year supply of all sizes of Water Meters and Components for all Water Districts for the Parish of Jefferson.

Warranty:

Products shall be warranted that they are manufactured in accordance with the applicable material specifications and are free from defects in workmanship and materials. Any defective items sold under this contract shall be replaced at no cost to the purchaser.

General Specifications:

These specifications are prepared for a two (2) year supply of all sizes of Water Meters and components for all Water Districts for the Parish of Jefferson.

Jefferson Parish reserves the right to purchase any quantity of units more or less than specified and/or as needed during the two (2) year period of the contract.

The bidder is not to pre-ship any quantity until authorized by purchase order.

The quantities shown on the proposal guide are approximate quantities to be acquired by Jefferson Parish over a two (2) year period. Actual usage will be on an "as needed" basis.

All warranty statements and technical literature must be submitted within ten (10) calendar days after the bid opening date. Failure to honor such request will result in the bid being considered non-responsive.

Successful bidder will be allowed 7 calendar days, from the date of contract execution, to stock and maintain sufficient quantities on hand to meet the needs of Jefferson Parish. Vendor will ship requested quantities (as indicated on purchase order) after seven {7} calendar days. Note that no order shall be placed until after the 7th day.

Bid delivery shall include all freight and delivery costs to Jefferson Parish warehouse locations on the East and West Banks of Jefferson Parish.

Technical Specifications:

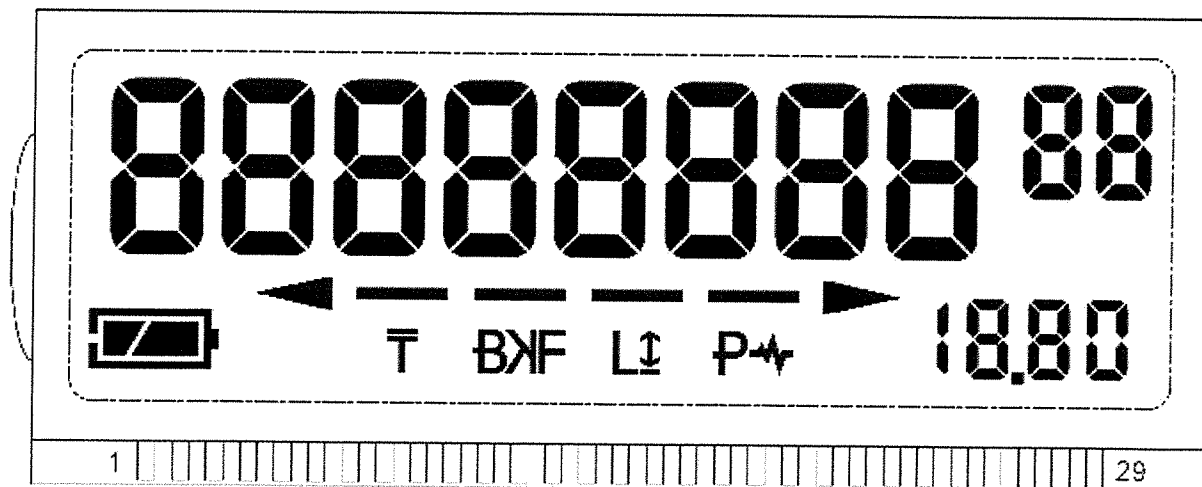
All meters shall be compatible to the Itron ERT 100 W automated meter reading system. All meter registers shall be Itron ERT ready with the "Itron Inline Connector" included on the register. Meter registers shall use an encoder technology with mechanical odometer. Pulse technology will not be accepted. Registers should be magnetic-driven, easily read with unobstructed number wheels. LCD displays are not accepted unless otherwise specified. Itron Inline Connectors shall be 5 feet in length for meters 1 inch and smaller and 25 feet in length for meters 2 inch and larger.

The Tomahawk™ Encoder is a solid-state encoder with no mechanical numerical wheels. It can deliver an industry standard absolute encoded or scalable pulse output configurable to 1, 10, 100, 1000, 10,000 or 100,000 measurement unit intervals. It is designed for use with all RG3 meters and retrofit to most other manufacturer's meters (Badger, Master Meter, Neptune, Sensus, Hersey, etc.). Tomahawk™ provides communication with RG3 Tesla AMR/AMI endpoints and other AMR/AMI technology solutions approved by RG3 Meter Company.

Magnetic Drive Communication: Reliable and dependable register coupling is provided through a direct-drive, high-strength magnetic coupling through the meter body to the wetted magnet

Field Programmable: Tomahawk™ is factory programmed to customer specifications, with the option for field programming the unit of measure, the existing read if desired, and the ability to choose between an absolute encoded or pulse output.

Resolution for 5/8" to 4": "Absolute" 10-digit meter reading on the LCD with precise visual readings down to the hundredths of a gallon or thousandths of a cubic foot/meter. Electronic output includes 8-digit remote meter reading. 1 to 8 digits can be communicated for billing.



LCD: Tomahawk™ is equipped with the largest LCD in the industry for easy reading at a distance of 6 feet. The LCD provides a 10-digit resettable totalizer and a 6 segment leak detector with flow direction arrows. Flow rate is clearly displayed in the applicable unit of measurement. Leak warnings are shown on the LCD as appropriate. Battery status is indicated on the LCD along with an early warning flag that informs the user when 20% or less battery

Wire Connections: Tomahawk's™ easy connect protected electrical contact exterior screw terminals allow for simple removal and replacement of the wiring harness, eliminating the need for splicing wires and the possibility of associated corrosion. Screw terminal pins are molded into the engineered polycarbonate lens and back sealed with a potting compound eliminating any opportunity for moisture intrusion at the connections making Tomahawk™ suitable for installation in all environments, including continuously submerged water meter pits. Tomahawk™ is provided with pre-sized wire harnesses available for field connection or factory wired to RG3 approved AMR/AMI endpoints or a variety of lead wire lengths as specified by the customer. Tomahawk™ installs up to 600 feet away from the controller. Standardized lead lengths are 5 and 22 feet

The encoder register shall send data in ASCII format (American Standard Code for Information Interchange) to the endpoint. The encoder register shall transmit the complete odometer wheel reading, with a minimum of 6 digits and all 10 positions. An 8-digit register identification number that has been factory set and never duplicated shall also be sent to the reading device. A locating chip or other suitable device shall be affixed in such a way that when the IOOW Endpoint interrogates the encoder register, the microprocessor shall determine the true position of each odometer wheel, encode the reading and send it to the Endpoint. The locating device shall not make contact with the odometer wheel or any other part of the register in order to prevent wear and corrosion of said connection. The use of Optical Character Recognition or Light Emitting Diodes is not an acceptable means of providing odometer wheel position.

Comply –

Operating Characteristics: The digital reading obtained by an AMR/AMI device is retrieved directly from the register's internal magnetic sensor coupled to the wetted magnet through the meter body. Tomahawk's™ magnetic sensors are always on and always watching. This technology provides real time reads and eliminates interpretation of odometer wheels by means of LED, optical character recognition, or electromechanical contacts that could wear out. The Tomahawk™ solution provides superior long-term performance and the most accurate counting solution

Meter register resolution shall be 6 dial type or higher (if available)

Comply - Resolution for 5/8" to 4": "Absolute" 10-digit meter reading on the LCD with precise visual readings down to the hundredths of a gallon or thousandths of a cubic foot/meter. Electronic output includes 8-digit remote meter reading. 1 to 8 digits can be communicated for billing.

Meter manufacturers must guarantee the complete sealed register for a period of not less than ten (10) years for satisfactory operating performance and against fogging. If the sealed register fogs and/or does not operate satisfactorily, as determined by the Department of Water, the meter manufacturer shall replace the unit at no cost to the Jefferson Parish Water Department during the warranty period.

Comply – Refer to full warranty for detailed warranty guidelines and standards

Scope of Warranty

This warranty applies exclusively to RG3 Meter Company Tomahawk™ Encoder Registers ("product") purchased and manufactured after January 1, 2014 and (1) used in accordance with RG3 Meter Company's published Technical Specifications and (2) when installed in accordance with RG3 Meter Company's published installation instructions, both as in effect as of the date of RG3 Meter Company's shipment of the product. This guarantee applies exclusively to the original utility purchaser when product is purchased from either RG3 Meter Company or an RG3 Meter Company authorized Distributor.

Materials and Workmanship

If used and installed as described above, RG3 Meter Company guarantees product covered by this guarantee to be free from defects in materials and workmanship for a period of 12 years after shipment by RG3 Meter Company or its authorized Distributor, and at a prorated percentage of the current list prices in effect for the year product is accepted by RG3, according to the schedule below:

Year of Replacement Cost

Years	Replacement Cost
1-12	Full Replacement
13-14	40%
15-16	45%
17-18	50%
19	55%
20	60%
21	65%
22	70%
23	75%
24	80%
25	90%

Each meter shall meet new meter accuracy standards during the *first* year of operation. The meter manufacturer must further guarantee all internal working meter parts for a period of not less than ten (10) years. During this period, measuring chambers shall meet the repaired meter accuracy standards of AWWA Manual M-6. Chambers which do not meet the aforementioned accuracy warranty shall be replaced by the manufacturer at no cost to the Jefferson Parish Water Department.

Comply- RG3 Meters have the best warranty in the industry – 25 years

Warranty for all meters 5/8" to 1"- Standard 10 year new meter accuracy warranty and 25 year main case warranty.

*** Refer to full warranty for detailed warranty guidelines and standards.**

Warranty for all Positive Displacement meters 2" and above - Standard 5 year new meter accuracy warranty and 25 year main case warranty.

***Refer to full warranty for detailed warranty guidelines and standards**

Group 1. Positive Displacement Meters (Sizes 5/8"x 3/4", 1" & 2"):

Meters to be furnished shall meet or exceeds the American Water Works Associations Standards

C-700-09 or latest revision.

Comply - All RG3 Meters conform to American Water Works Association C700 as latest revised

Meters shall comply with the lead-free requirements as defined by NSF/ANSI Standard 61, Annex G (NSF 372) and 2014 provisions of the safe drinking water act.

Comply - Main cases are made of Bismuth BiAlloy CDA89836 or EnviroBrass™ II C89520 and are in compliance with NSF / ANSI 61 standards and the Safe Drinking Water Act (NSF 372)

Meters shall be nutating disc type and shall not exceed maximum number of nutation's allowed under AWWA C-700-09. The thrust roller of the disc shall operate on a stainless steel roller.

RG3 uses an oscillating piston positive displacement type meter that conforms to AWWA standards for its category and provides superior accuracy and longevity compared to other positive displacement water meters.

The register assembly shall be permanently encased and rolled sealed in a stainless steel can with a glass lens. The glass lens must be heavy duty, scratch resistant, molded glass for readability, and shall be as near to unbreakable as possible.

Comply - Tomahawks shroud assembly is constructed from engineered polycarbonate with a hermetically sealed stainless steel bottom. The enclosure is UV-resistant, weatherproof, and fully encapsulated to withstand harsh environments and to protect the solid state electronics. External antenna screw terminal pins are molded into the engineered polycarbonate lens and back sealed with a potting compound eliminating any opportunity for moisture intrusion at the connections making the Tomahawk suitable for installation in all environments, including continuously submerged water meter pits. Electronic circuitry is gold plated to provide increased corrosion resistance before it is encapsulated by high quality endothermic potting material that diminishes the expansion and contraction related to temperature extremes.

The main case bottom cover shall be lead free bronze and attached with a minimum of four (4) stainless steel or bronze bolts of the cap screw type. Exterior trim bolts, nuts, and screws shall be bronze or stainless steel to insure long service life.

All meters are of Lead Free Bronze and have a bottom plate that provides 360 degrees of uniform compression loading on the chamber. Bottom plates are held in place by a stainless steel retaining ring.

Laying lengths shall be as follows:

METER SIZE	LAVING LENGTH
5/8"x3/4"	7'-W'
1"	10'-3/4"
2"	17"

Note: There can be no change in these measurements as new meters must fit in the same space as the existing installations.

Comply – see attached spec sheets

Operating Characteristics

Meter Size	Low Flow {98.5% Min.}	Typical Operating Range	Maximum Continuous Flow	Pressure Loss (Not to Exceed)
5/8" X 3/4"	0.25 GPM	0.50 to 25 GPM	15 GPM	2.8 PSI @ 15 GPM
1"	0.75 GPM	1.25 to 70 GPM	SO GPM	6.5 PSI @ 50 GPM
2"	1.50 GPM	1.50 to 170 GPM	100 GPM	3.3 PSI @ 100 GPM

Flow ratings shall be 25 GPM for 5/8"x 3/4" meters, 70 GPM for 1" meters and 170 GPM for 2" meters. 2" meters have elliptical ends.

See attached spec sheets

DATE: 3/30/2016

INVITATION TO BID
THIS IS NOT AN ORDER

BID NO.: 50-00116113

JEFFERSON PARISH
PURCHASING DEPARTMENT
P.O. BOX 9
GRETNA, LA. 70054-0009
504-364-2678

Page: 1

BUYER: MCamardelle@jeffparish.net

BIDS WILL BE RECEIVED IN THE PURCHASING DEPARTMENT, SUITE 4400, JEFFERSON PARISH GENERAL GOVERNMENT BUILDING, and 200 DERBIGNY STREET, GRETNA, LA 70053 UNTIL 2:00PM, 4/14/2016 AND PUBLICLY OPENED THEREAFTER.

LATE BIDS WILL NOT BE ACCEPTED

Unless submitting via online (see Page 3), each bid must be submitted in a sealed envelope bearing on the outside; the name of the Bidder, his address, and the name of the project for which the bid is submitted and the bid number.

NOTE: ONLY BIDS WRITTEN IN INK OR TYPEWRITTEN, AND PROPERLY SIGNED BY A MEMBER OF THE FIRM OR AUTHORIZED REPRESENTATIVE, WILL BE ACCEPTED. PENCIL AND/OR PHOTOSTATIC FIGURES OR SIGNATURES SHALL RESULT IN BID REJECTION.

INSTRUCTIONS FOR BIDDERS AND GENERAL CONDITIONS
THE FOLLOWING INSTRUCTIONS APPLY TO ALL BIDS

All bids submitted are subject to these instructions and general conditions and any special conditions and specifications contained herein, all of which are made part of this bid proposal reference. By submitting a bid, vendor agrees to comply with all provisions of Louisiana Law as well be in compliance with the Jefferson Parish Code of Ordinances, Louisiana Code of Ethics, applicable Jefferson Parish ethical standards and Jefferson Parish Resolution No. 113646 and/or Resolution No. 113647.

All vendors submitting bids must register as a Jefferson Parish vendor if not already yet registered. Bidders may be required to furnish current W-9 Forms and respective Tax Identification Numbers within 10 days after bid opening if such information is not on file or not up to date. Registration forms may be downloaded from www.purchasing.jeffparish.net and clicking on Vendor Information.

All quotations shall be based on F.O.B. Agency warehouse or job site, anywhere within the Parish as designated by the Purchasing Department. This provision does not apply to public works projects

JEFFERSON PARISH requires all products to be new (current) and all work must be performed according to standard practices for the project. Unless otherwise specified, no aftermarket parts will be accepted. Unless otherwise specified, all workmanship and materials must have at least one (1) year guaranty, in writing, from the date of delivery and/or acceptance of the project. Any deviations or alterations from the specifications must be indicated and/or supporting documentation supplied with bid submission.

Bidders should submit all questions in writing and fax them to the Purchasing Department at (504) 364-2693 no later than FIVE (5) working days prior to bid opening. Bid numbers should be mentioned in all requests. Questions may also be emailed to the buyer for this bid at the email address listed above. If submitting online, vendors may send questions via the E-Procurement site no later than Five (5) working days prior to the bid opening.

If this bid requires a pre-bid conference (see Additional Requirements section), bidders are advised that such conference will be held to allow bidders the opportunity to identify any discrepancies in the bid specifications and seek further clarification regarding instructions. The Purchasing Department will issue a written response to bidders' questions in the form of an Addendum. Please note that all official communication will be expressed in the form of an addendum.

All formal Addenda require written acknowledgement on the bid form by the bidder. Failure to acknowledge an Addendum on the bid form shall cause the bid to be rejected. JEFFERSON PARISH reserves the right to award bid to next lowest responsive and responsible bidder in this event.

The purpose and intention of this invitation to bid is to afford all suppliers an equal opportunity to bid on all construction, maintenance, repair, operating supplies and/or equipment listed in this bid proposal. JEFFERSON PARISH WILL ACCEPT ONE BID ONLY FROM EACH VENDOR. Items bid must meet specifications.

Visit our website at [HTTP://PURCHASING.JEFFPARISH.NET](http://PURCHASING.JEFFPARISH.NET)

JEFFERSON PARISH will accept one price for each item unless otherwise indicated. Two or more prices for one item will result in bid rejection. Bidders are required to complete, sign and return the bid form and/or complete and return the associated line item pricing forms as indicated. Vendors must not alter the bid forms. Doing so will cause the bid to be rejected.

If the bid exceeds \$30,000.00 and the company is duly authorized to do business in the state of Louisiana, a corporate resolution must be submitted with the bid or the person signing the bid documents must be listed on the Louisiana Secretary of State's website as an officer of the corporation, unless bidder has otherwise complied with LSA-R.S. 38:2212(B) (5). If the bid is in excess of \$30,000 and bidder is registered out of the state of Louisiana, a corporate resolution must be submitted with the bid, unless bidder has otherwise complied with LSA-R.S. 38:2212(B)(5). Failure to comply will cause bid to be rejected; the Parish reserves the right to award bid to the next lowest responsive and responsible bidder in this event. Bids submitted by Owner or Sole Proprietorships must include certification that he or she owns the entity for which the bid is signed. Sole proprietors submitting bids for public works projects shall within 10 days after bid opening submit sole proprietorship certification.

NOTE: A sample corporate resolution can be downloaded from our website <http://purchasing.jeffparish.net> or you may provide your own document. A sample certification of sole proprietorship can also be downloaded from our website <http://purchasing.jeffparish.net> or you may provide your own document.

INSTRUCTIONS FOR BIDDERS AND GENERAL CONDITIONS

A. AWARD OF CONTRACT: JEFFERSON PARISH reserves the right to award contracts or place orders on a lump sum or individual item basis, or such combination, as shall in its judgment be in the best interest of JEFFERSON PARISH. Every contract or order shall be awarded to the LOWEST RESPONSIVE and RESPONSIBLE BIDDER, taking into consideration the CONFORMITY WITH THE SPECIFICATIONS and the DELIVERY AND/OR COMPLETION DATE. IN THE EVENT OF SPLIT AWARD, THE PURCHASING DEPARTMENT MAY CONTACT VENDORS TO REQUEST REQUIRED AFFIDAVITS. THOSE VENDORS WILL HAVE 10 DAYS FROM THE DATE OF NOTICE TO SUBMIT COMPLETE, SIGNED AND NOTARIZED AFFIDAVITS IN ORIGINAL FORMATS.

All bid prices shall remain valid for 45 days. Jefferson Parish and the lowest responsive and responsible bidder(s) by mutual written consent may mutually agree to extend the deadline for award by one (1) or more extensions of thirty (30) calendar days.

Preference is hereby given to materials, supplies, and provisions produced, manufactured or grown in Louisiana, quality being equal to articles offered by competitors outside the state. "LSA-R.S.38:2251-2261"

B. USE OF BRAND NAMES AND STOCK NUMBERS: Where brand names and stock numbers are specified, it is for the purpose of establishing certain minimum standards of quality. Bids may be submitted for products of equal quality, provided brand names and stock numbers are specified. Complete product data may be required prior to award.

C. CANCELLATION OF CONTRACT: JEFFERSON PARISH reserves the right to cancel all or any part if not shipped promptly. No charges will be allowed for parking or cartage unless specified in quotation. The order must not be filled at a higher price than quoted. JEFFERSON PARISH reserves the right to cancel any contract at anytime and for any reason by issuing a THIRTY (30) day written notice to the contractor.

For good cause and as consideration for executing a contract with Jefferson Parish, vendor conveys, sells, assigns and transfers to Jefferson Parish or its assigns all rights, title and interest in and to all causes of action it may now or hereafter acquire under the antitrust laws of the United States and the State of Louisiana, relating to the particular good or services purchased or acquired by Jefferson Parish.

D. PRICES: Jefferson Parish is exempt from paying sales tax under LSA-R.S. 47:301 (8) (c). All prices for purchases by Jefferson Parish of supplies and materials shall be quoted in the unit of measure specified and unless otherwise specified, shall be exclusive of state and Parish taxes. The price quoted for work shall be stated in figures. In the event there is a difference in unit prices and totals, the unit price shall prevail.

Quantities listed are for bidding purposes only. Actual requirements may be more or less than quantities listed.

Bidders are not to exclude from participation in, deny the benefits of, or subject to discrimination under any program or activity, any person in the United States on the grounds of race, color, national origin, or sex; nor discriminate on the basis of age under the Age Discrimination Act of 1975, or with respect to an otherwise qualified handicapped individual as provided in Section 504 of the Rehabilitation Act of 1973, or on the basis of religion, except that any exemption from such prohibition against discrimination on the basis of religion as provided in the Civil Rights Act of 1964, or Title VI and VII of the Act of April 11, 1968, shall also apply. This assurance includes compliance with the administrative requirements of the Revenue Sharing final handicapped discrimination provisions contained in Section 51.55 (c), (d), (e), and (k)(5) of the Regulations. New construction or renovation projects must comply with Section 504 of the 1973 Rehabilitation Act, as amended, in accordance with the American National Standard Institute's specifications (ANSI A17.1-1961).

Advertised bids will be tabulated and a copy of the tabulation will be forwarded to each responding bidder.

IN ACCORDANCE WITH STATE REGULATIONS JEFFERSON PARISH OFFERS ELECTRONIC PROCUREMENT TO ALL VENDORS

This Electronic Procurement System allows vendors the convenience of reviewing and submitting bids online. This is a secure site and authorized personnel have limited read access only. Please note requirements contained in this bid package for electronic bid submission.

Please visit the Purchasing Department webpage at <http://purchasing.jeffparish.net> to register and review Jefferson Parish solicitations.

The general specifications for construction projects and the purchase of materials, services and/or supplies are those adopted by the JEFFERSON PARISH Council by Resolution No. 113646 or 113647 dated 12/09/09. The general conditions adopted by this Resolution shall be considered as much a part of this document as if they were written wholly herein. A copy may be obtained from the Office of the Parish Clerk, Suite 6700, Jefferson Parish General Government Building, 200 Daubigny Street, Gretna, LA 70053. You may also obtain a copy by visiting the Purchasing Department webpage at <http://purchasing.jeffparish.net> and clicking on Online Forms.

ADDITIONAL REQUIREMENTS FOR THIS BID

PLEASE MATCH THE NUMBERS PRINTED IN THIS BOX WITH THE
CORRESPONDING INSTRUCTIONS BELOW.

10, 12, 13, 15

1. All bidders must attend the MANDATORY pre-bid conference and will be required to sign in and out as evidence of attendance. In accordance with LSA R.S. 38:2212(1), all prospective bidders shall be present at the beginning of the MANDATORY pre-bid conference and shall remain in attendance for the duration of the conference. Any prospective bidder who fails to attend the conference or remain for the duration shall be prohibited from submitting a bid for the project.
2. Attendance to this pre-bid conference is optional. However, failure to attend the pre-bid conference shall not relieve the bidder of responsibility for information discussed at the conference. Furthermore, failure to attend the pre-bid conference and inspection does not relieve the successful bidder from the necessity of furnishing materials or performing any work that may be required to complete the work in accordance with the specification With no additional cost to the owner.
3. Contractor must hold current applicable JEFFERSON PARISH licenses with the Department of Inspection and Code Enforcement. Contractor shall obtain any and all permits required by the JEFFERSON PARISH Department of Inspection and Code Enforcement. The contractor shall be responsible for the payment of these permits. All permits must be obtained prior to the start of the project. Contractor must also hold any and all applicable Federal and State licenses. Contractor shall be responsible for the payment of these permits and shall obtain them prior to the start of the project.
4. A LA State Contractor's License will be required in accordance with LSA R.S. 37-2150 ET. Seq. and such license number will be shown on the outside of the bid envelope. Failure to comply will cause the bid to be rejected. Additionally if submitting the bid electronically, then the license number must be entered in the appropriate field in the Electronic Procurement system. Failure to comply will cause the bid to be rejected.
5. It is the bidder's responsibility to visit the job site and evaluate the job before submitting a bid.

INSTRUCTIONS FOR BIDDERS AND GENERAL CONDITIONS

6. Job site must be clean and free of all litter and debris daily and upon completion of the contract. Passageways must be kept clean and free of material, equipment, and debris at all times. Flammable material must be removed from the job site daily because storage will not be permitted on the premises. Precautions must be exercised at all times to safeguard the welfare of JEFFERSON PARISH and the general public.
7. PUBLIC WORKS BIDS: All awards for public works in excess of \$5,000.00 will be reduced to a formal contract which shall be recorded at the contractor's expense with the Clerk of Court and Ex-Officio Recorder of Mortgages for the Parish of Jefferson. A price list of recordation costs may be obtained from the Clerk of Court and Ex-Officio Recorder of Mortgages for the Parish of Jefferson. All awards in excess of \$25,000.00 will require both a performance and a payment bond. Unless otherwise stated in the bid specifications, the performance bond requirements shall be 100% of the contract price. Unless otherwise stated in the bid specifications, the payment bond requirements shall be 100% of the contract price. Both bonds shall be supplied at the signing of the contract.
8. NON-PUBLIC WORKS BIDS: A performance bond will be required for this bid. The amount of the bond will be 100% of the contract price unless otherwise indicated in the specifications. The performance bond shall be supplied at the signing of the contract.
9. NON-PUBLIC WORKS BIDS: A payment bond will be required for this bid. The amount of the bond will be 100% of the contract price unless otherwise indicated in the specifications. The payment bond shall be supplied at the signing of the contract.
10. Unless otherwise stated in the bid specifications, the successful bidder will be required to procure standard insurance policies evidencing Parish-mandated insurance requirements as indicated on the attached sheet. The current certificate of insurance must be submitted by low bidder within 10 days after bid opening to the Purchasing Department. Failure to comply will cause bid to be rejected. JEFFERSON PARISH reserves the right to award bid to the next lowest responsive and responsible bidder in this event.
11. A bid bond will be required with bid submission in the amount of 5% of the total bid, unless otherwise stated in the bid specifications. Acceptable forms shall be limited to cashier's check, certified check, or surety bid bond. All sureties must be in original format (no copies). If submitting a bid online, vendors must submit an electronic bid bond through the respective online clearinghouse bond management system(s) as indicated in the electronic bid solicitation on Central Auction House. No scanned paper copies of any bid bond will be accepted as part of the electronic bid submission.
12. This is a requirements contract to be provided on an as needed basis. JEFFERSON PARISH makes no representations on warranties with regard to minimum guaranteed quantities unless otherwise stated in the bid specifications.
13. Freight charges should be included in total cost when quoting. If not quoted FOB DELIVERED, freight must be quoted as a separate item. Bid may be rejected if not quoted FOB DELIVERED or if freight charges are not indicated on bid form.
14. PUBLIC WORKS BIDS- Completed, Signed and Properly Notarized Affidavits (in Original Format) required; Non-Conviction Affidavit, Non-Collusion Affidavit, Campaign Contribution Affidavit and E-Verify Affidavit must be completed, signed, notarized and submitted by low bidder within 10 days after bid opening to the Purchasing Department on all solicitations for construction, alteration or demolition of public building or project, including but not limited to requirements found in LSA-RS 38:2212.9; LSA-RS 38:2212.10; LSA-RS 38:2224; Code of Ordinances, Jefferson Parish, Louisiana, Sec 2-923.1. Failure to comply will cause bid to be rejected; the Parish reserves the right to award bid to the next lowest responsive and responsible bidder in this event. For the convenience of vendors, all affidavits have been combined into one form entitled PUBLIC WORKS BID AFFIDAVIT. This affidavit must be submitted in its original format for the bid to be considered responsive.
15. NON PUBLIC WORK BIDS- Completed, Signed and Properly Notarized Affidavits (in Original Format) required; Non-Collusion Affidavit, and Campaign Contribution Affidavit must be completed, signed, notarized and submitted by low bidder within 10 days after bid opening to the Purchasing Department. See LSA-RS 38:2212.10; LSA-RS 38:2224; Code of Ordinances, Jefferson Parish, Louisiana, Sec 2-923.1 Failure to comply will cause bid to be rejected; the Parish reserves the right to award bid to the next lowest responsive and responsible bidder in this event. For the convenience of vendors, all affidavits have been combined into one form entitled NON PUBLIC WORKS BID AFFIDAVIT. This affidavit must be submitted in its original format for the bid to be considered responsive.

It shall be the duty of every parish officer, employee, department, agency, special district, board, and commission: and the duty of every contractor, subcontractor, and licensee of the parish, and the duty of every applicant for certification of eligibility for a parish contract or program, to cooperate with the Inspector General in any investigation, audit, inspection, performance review, or hearing pursuant to Jefferson Parish Code of Ordinances Section 2-155.10(19). By submitting a bid, vendor acknowledges this and will abide by all provisions of the referenced Jefferson Parish Code of Ordinances.

DATE: 3/30/2016

Page: 5

BID NO.: 50-00116113

BID FORM

Non Public Works

All Public Work Projects are required to use the Louisiana Uniform Public Work Bid Form

All prices must be held firm unless an escalation provision is requested in this bid. Jefferson Parish will allow one escalation during the term of the contract, which may not exceed the U.S. Bureau of Labor Statistics National Index for all Urban Consumers, unadjusted 12 month figure. The most recently published figure issued at the time an adjustment is requested will be used. A request must be made in writing by the vendor, and the escalation will only be applied to purchases made after the request is made.

Are you requesting an escalation provision?

YES _____ NO XMAXIMUM ESCALATION PERCENTAGE REQUESTED N/A %INITIAL BID PRICES WILL REMAIN FIRM THROUGH THE DATE OF 7/1/16

For the purposes of comparison of bids when an escalation provision is requested, Jefferson Parish will apply the maximum escalation percentage quoted by the bidder to the period to which it is applied in the bid. The initial price and the escalation will be used to calculate the total bid price. It will be assumed, for comparison of prices only, that an equal amount of material or labor is purchased each month throughout the entire contract.

DELIVERY: FOB JEFFERSON PARISH

INDICATE DELIVERY DATE ON EQUIPMENT AND SUPPLIES

AS NEEDED

LOUISIANA CONTRACTOR'S LICENSE NO.: (if applicable)

53132**THIS SECTION MUST BE COMPLETED BY BIDDER:**FIRM NAME: RG3 Meter companyADDRESS: 2912 S. Access RD.CITY, STATE: Longview TX ZIP: 75602TELEPHONE: (903) 753-3456 FAX: (903) 753-5678EMAIL ADDRESS: MIKE.DAVIS@RG3METER.COM

In the event that addenda are issued with this bid, bidders MUST acknowledge all addenda on the bid form. Bidder must acknowledge receipt of an addendum on the bid form as indicated. Failure to acknowledge any addendum on the bid form will result in bid rejection.

Acknowledge Receipt of Addenda: NUMBER: N/A

NUMBER: _____

NUMBER: _____

NUMBER: _____

TOTAL PRICE OF ALL BID ITEMS: \$ 367757.00AUTHORIZED SIGNATURE: [Signature]TITLE: MANAGING MEMBERLee Gregory

Printed Name

SIGNING INDICATES YOU HAVE READ AND COMPLY WITH THE INSTRUCTIONS AND CONDITIONS.

NOTE: All bids should be returned with the BID NUMBER and BID OPENING DATE indicated on the outside of the envelope submitted to the Purchasing Department.

INVITATION TO BID FROM JEFFERSON PARISH- continued

BID NO.: 50-00116113

SEALED BID

ITEM NUMBER	QUANTITY	U/M	DESCRIPTION OF ARTICLES	UNIT PRICE QUOTED	TOTALS
1	3,000.00	EA	TWO (2) YEAR CONTRACT FOR THE SUPPLY OF RESIDENTIAL WATER METERS AND ASSEMBLIES FOR THE JEFFERSON PARISH DEPARTMENT OF ENGINEERING 0010 5/8 INCH X 3/4 INCH POSITIVE DISPLACEMENT WATER METER RATED AT 25 GPM TYPICAL OPERATING RANGE • GROUP 1 RCDL M25, HR-E W/5' ITRON CONNECTOR OR EQUAL PD076PHITR (5 FT)	80 ⁰⁰	240,000
2	500.00	EA	0020 1 INCH POSITIVE DISPLACEMENT WATER METER RATED AT 70 GPM TYPICAL OPERATING RANGE-GROUP 1 RCDL M70, HR-E W/5' ITRON CONNECTOR OR EQUAL PD106PHITR (5 FT)	154 ⁰⁰	77,000
3	100.00	EA	0030 2 INCH WATER POSITIVE DISPLACEMENT WATER METER RATED AT 170 GPM TYPICAL OPERATING RANGE GROUP 1 RCDL M170, HR-E W/5' ITRON CONNECTOR OR EQUAL PD206BHITR (W/ 25 FT.) Per Section in Tech. Spec. (1 st Paragraph)	507 ⁵⁷	50,757

CORPORATE RESOLUTION

EXCERPT FROM MINUTES OF MEETING OF THE BOARD OF DIRECTORS OF
R63 Meter Company
INCORPORATED.

AT THE MEETING OF DIRECTORS OF R63 Meter Company
INCORPORATED, DULY NOTICED AND HELD ON OCTOBER 5, 2009
A QUORUM BEING THERE PRESENT, ON MOTION DULY MADE AND SECONDED. IT
WAS:

RESOLVED THAT LEE GREGORY, BE AND IS HEREBY
APPOINTED, CONSTITUTED AND DESIGNATED AS AGENT AND ATTORNEY-IN-
FACT OF THE CORPORATION WITH FULL POWER AND AUTHORITY TO ACT ON
BEHALF OF THIS CORPORATION IN ALL NEGOTIATIONS, BIDDING, CONCERNS
AND TRANSACTIONS WITH THE PARISH OF JEFFERSON OR ANY OF ITS AGENCIES,
DEPARTMENTS, EMPLOYEES OR AGENTS, INCLUDING BUT NOT LIMITED TO, THE
EXECUTION OF ALL BIDS, PAPERS, DOCUMENTS, AFFIDAVITS, BONDS, SURETIES,
CONTRACTS AND ACTS AND TO RECEIVE ALL PURCHASE ORDERS AND NOTICES
ISSUED PURSUANT TO THE PROVISIONS OF ANY SUCH BID OR CONTRACT, THIS
CORPORATION HEREBY RATIFYING, APPROVING, CONFIRMING, AND ACCEPTING
EACH AND EVERY SUCH ACT PERFORMED BY SAID AGENT AND ATTORNEY-IN-
FACT.

I HEREBY CERTIFY THE FOREGOING TO BE
A TRUE AND CORRECT COPY OF AN
EXCERPT OF THE MINUTES OF THE ABOVE
DATED MEETING OF THE BOARD OF
DIRECTORS OF SAID CORPORATION, AND
THE SAME HAS NOT BEEN REVOKED OR
RESCINDED.

Kathleen Cheppay
SECRETARY-TREASURER

4-12-2016
DATE

Non-Public Works Bid Affidavit Instructions

- Affidavit is supplied as a courtesy to Affiants, but it is the responsibility of the affiant to insure the affidavit they submit to Jefferson Parish complies, in both form and content, with federal, state and parish laws.
- Affidavit must be signed by an authorized representative of the entity or the affidavit will not be accepted.
- Affidavit must be notarized or the affidavit will not be accepted.
- Notary must sign name, print name, and include bar/notary number, or the affidavit will not be accepted.
- Affiant **MUST** select either **A** or **B** when required or the affidavit will not be accepted.
- Affiants who select choice **A** must include an attachment or the affidavit will not be accepted.
- If both choice **A** and **B** are selected, the affidavit will not be accepted.
- Affidavit marked **N/A** will not be accepted.
- It is the responsibility of the Affiant to submit a new affidavit if any additional campaign contributions are made after the affidavit is executed but prior to the time the council acts on the matter.

Instruction sheet may be omitted when submitting the affidavit

Non-Public Works Bid

AFFIDAVIT

STATE OF LOUISIANAPARISH/COUNTY OF JEFFERSON

BEFORE ME, the undersigned authority, personally came and appeared: LEE
GREGORY, (Affiant) who after being by me duly sworn, deposed and said that
he/she is the fully authorized CEO of RE3 Meter Co. (Entity),
the party who submitted a bid in response to Bid Number 50-00116113, to the Parish of
Jefferson.

Affiant further said:

Campaign Contribution Disclosures

(Choose A or B, if option A is indicated please include the required
attachment):

Choice A Attached hereto is a list of all campaign contributions, including the
date and amount of each contribution, made to current or former
elected officials of the Parish of Jefferson by Entity, Affiant, and/or
officers, directors and owners, including employees, owning 25%
or more of the Entity during the two-year period immediately
preceding the date of this affidavit or the current term of the elected
official, whichever is greater. Further, Entity, Affiant, and/or Entity
Owners have not made any contributions to or in support of current
or former members of the Jefferson Parish Council or the Jefferson
Parish President through or in the name of another person or legal
entity, either directly or indirectly.

Choice B X There are **NO** campaign contributions made which would require
disclosure under Choice A of this section.

Debt Disclosures

(Choose **A** or **B**, if option **A** is indicated please include the required attachment):

Choice A _____ Attached hereto is a list of all debts owed by the affiant to any elected or appointed official of the Parish of Jefferson, and any and all debts owed by any elected or appointed official of the Parish to the Affiant.


Choice B X _____ There are **NO** debts which would require disclosure under Choice A of this section.

Affiant further said:

That Affiant has employed no person, corporation, firm, association, or other organization, either directly or indirectly, to secure the public contract under which he received payment, other than persons regularly employed by the Affiant whose services in connection with the construction, alteration or demolition of the public building or project or in securing the public contract were in the regular course of their duties for Affiant; and

[The remainder of this page is intentionally left blank.]

That no part of the contract price received by Affiant was paid or will be paid to any person, corporation, firm, association, or other organization for soliciting the contract, other than the payment of their normal compensation to persons regularly employed by the Affiant whose services in connection with the construction, alteration or demolition of the public building or project were in the regular course of their duties for Affiant.



Signature of Affiant

LEE GREGORY

Printed Name of Affiant

SWORN AND SUBSCRIBED TO BEFORE ME

ON THE 12 DAY OF April, 2016



Notary Public

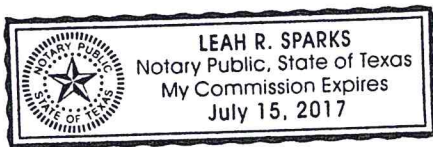
Leah Sparks

Printed Name of Notary

#129489150

Notary/Bar Roll Number

My commission expires July 15, 2017



VENDOR'S APPLICATION

(PLEASE PRINT OR TYPE)

NAME OF VENDOR: RG3 Meter Company
ADDRESS: 2912 S. Access Rd
CITY: Longview
STATE: TX
ZIP CODE: 75602
PARISH: _____
PHONE NUMBER: 903-753-3456 (AREA CODE)
FAX NUMBER: 903-753-5678 (AREA CODE)
E-MAIL ADDRESS: MIKE.DAVIS@RG3METER.COM
FEDERAL IDENTIFICATION NUMBER: 61-1689218
NATURE OF YOUR BUSINESS: MANUFACTURING OF WATER METERS
NUMBER OF YEARS IN BUSINESS: _____

PLEASE CHECK ONE:

CORPORATION: ☐

INDIVIDUAL: ☐

PARTNERSHIP: ☐

OTHER: ☐

☒ LIMITED PARTNERSHIP

APPROXIMATE INVENTORY NORMALLY STOCKED: 2 Million

NUMBER OF EMPLOYEES: 50

SIZE OF WAREHOUSE(S) OR SHIPPING LOCATIONS:

LOCATION:

SQUARE FEET:

1. Longview TX
2. Red Oak, TX

20,000
10,000

*****PREFERENCE WILL BE GIVEN TO STOCKING VENDORS*****

PLEASE PRINT SIGNER'S NAME: LEE GREGORY

SIGNATURE: [Signature]

TITLE: MANAGING MEMBER

DATE: 4/12/16

PLEASE RETURN COMPLETED FORM TO:
JEFFERSON PARISH PURCHASING DEPARTMENT
200 DERBIGNY STREET/SUITE 4400
GRETN, LA 70053
(504) 364-2678 - Office
(504) 364-2693 - Fax

COMMODITY ENROLLMENT

Please see the attached commodity listing and list only commodities that apply to your business.

[illegible]

***A listing of Commodity Code Numbers is located in our website – <http://ipnet/home/DepartmentPages/Purchasing/pdf/NIGP.pdf>**

Request for Taxpayer Identification Number and Certification

Give Form to the
requester. Do not
send to the IRS.

Print or type
See Specific Instructions on page 2.

Name (as shown on your income tax return)

RG3 Meta Company

Business name/disregarded entity name, if different from above

Check appropriate box for federal tax

classification (required): ☐ Individual/sole proprietor ☐ C Corporation ☐ S Corporation ☐ Partnership ☐ Trust/estate

☒ Limited liability company. Enter the tax classification (C=C corporation, S=S corporation, P=partnership) ▶ *P*

☐ Exempt payee

☐ Other (see instructions) ▶

Address (number, street, and apt. or suite no.)

2912 S. Access Rd.

City, state, and ZIP code

Lombview TX 75602

Requester's name and address (optional)

List account number(s) here (optional)

Part I Taxpayer Identification Number (TIN)

Enter your TIN in the appropriate box. The TIN provided must match the name given on the "Name" line to avoid backup withholding. For individuals, this is your social security number (SSN). However, for a resident alien, sole proprietor, or disregarded entity, see the Part I instructions on page 3. For other entities, it is your employer identification number (EIN). If you do not have a number, see *How to get a TIN* on page 3.

Social security number

- -

Note. If the account is in more than one name, see the chart on page 4 for guidelines on whose number to enter.

Employer identification number

61-1689218

Part II Certification

Under penalties of perjury, I certify that:

1. The number shown on this form is my correct taxpayer identification number (or I am waiting for a number to be issued to me), and
2. I am not subject to backup withholding because: (a) I am exempt from backup withholding, or (b) I have not been notified by the Internal Revenue Service (IRS) that I am subject to backup withholding as a result of a failure to report all interest or dividends, or (c) the IRS has notified me that I am no longer subject to backup withholding, and
3. I am a U.S. citizen or other U.S. person (defined below).

Certification instructions. You must cross out item 2 above if you have been notified by the IRS that you are currently subject to backup withholding because you have failed to report all interest and dividends on your tax return. For real estate transactions, item 2 does not apply. For mortgage interest paid, acquisition or abandonment of secured property, cancellation of debt, contributions to an individual retirement arrangement (IRA), and generally, payments other than interest and dividends, you are not required to sign the certification, but you must provide your correct TIN. See the instructions on page 4.

Sign
Here

Signature of
U.S. person ▶

Katrina Gregory

Date ▶

4-12-16

General Instructions

Section references are to the Internal Revenue Code unless otherwise noted.

Purpose of Form

A person who is required to file an information return with the IRS must obtain your correct taxpayer identification number (TIN) to report, for example, income paid to you, real estate transactions, mortgage interest you paid, acquisition or abandonment of secured property, cancellation of debt, or contributions you made to an IRA.

Use Form W-9 only if you are a U.S. person (including a resident alien), to provide your correct TIN to the person requesting it (the requester) and, when applicable, to:

1. Certify that the TIN you are giving is correct (or you are waiting for a number to be issued),
2. Certify that you are not subject to backup withholding, or
3. Claim exemption from backup withholding if you are a U.S. exempt payee. If applicable, you are also certifying that as a U.S. person, your allocable share of any partnership income from a U.S. trade or business is not subject to the withholding tax on foreign partners' share of effectively connected income.

Note. If a requester gives you a form other than Form W-9 to request your TIN, you must use the requester's form if it is substantially similar to this Form W-9.

Definition of a U.S. person. For federal tax purposes, you are considered a U.S. person if you are:

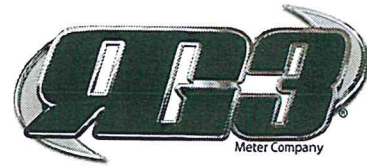
- An individual who is a U.S. citizen or U.S. resident alien,
- A partnership, corporation, company, or association created or organized in the United States or under the laws of the United States,
- An estate (other than a foreign estate), or
- A domestic trust (as defined in Regulations section 301.7701-7).

Special rules for partnerships. Partnerships that conduct a trade or business in the United States are generally required to pay a withholding tax on any foreign partners' share of income from such business. Further, in certain cases where a Form W-9 has not been received, a partnership is required to presume that a partner is a foreign person, and pay the withholding tax. Therefore, if you are a U.S. person that is a partner in a partnership conducting a trade or business in the United States, provide Form W-9 to the partnership to establish your U.S. status and avoid withholding on your share of partnership income.

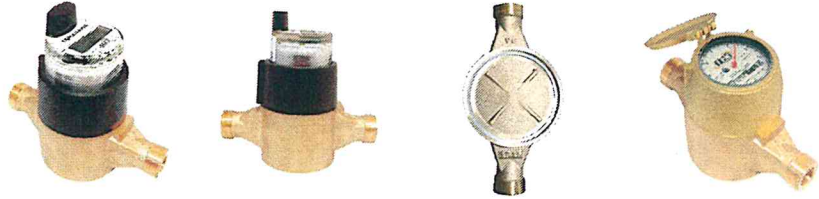
Perpetual® Low Lead Meters

Positive Displacement Cold Water Meters

5/8" (DN 15mm), 3/4" (DN 20mm), 1" (DN 25mm)



Specifications



Applications - For use in measurement of potable cold water in residential, commercial and industrial services where flow is in one direction only.

General- All Perpetual® positive displacement cold water meters (5/8" - 1") conform to American Water Works Association C700 as latest revised.

Measuring Chambers - Measuring chambers are made of suitable engineering plastics to meet AWWA C700 standards. The piston has approximately the same specific gravity as water. All spindles are stainless steel. Chamber is supported by silicone rubber mounts.

Lead Free Main Case - Main cases are made of Bismuth BiAlloy CDA89836 or EnviroBrass™ II C89520 and are in compliance with NSF / ANSI 61 standards and the Safe Drinking Water Act (NSF 372). The serial number is permanently marked on the body, along with the size, direction of flow and manufacturer (RG3). Retaining ring is made of stainless steel.

Main Case	Lead Free Bronze
Measuring Unit	Thermoplastic
O-Ring	Nitrile Rubber
Magnet	Ceramic Ferrite
Strainer	Thermoplastic
Register Lens	Tempered Glass
Register Housing & Lid	Bronze or Polymer
Gearing Wheels	Thermoplastic

Installation - The meter must be installed in a clean pipeline, free from any foreign materials. The meter shall be installed with the direction of flow as indicated by the arrow cast in the meter case. The meter may be installed in horizontal or inclined lines.

Strainers - All meters have a strainer made of a polypropylene plastic. Strainers are located near the inlet port in the main case just before the measuring chamber. Strainer screens are rigid, snug fitting and have an effective straining area of at least double that of the main case inlet. All strainers are easily removable and replaceable.

Bottom Plate - All meters have a bottom plate that provides 360 degrees of uniform compression loading on the chamber. Bottom plates are held in place by a stainless steel retaining ring.

O-Ring - All meters are sealed with a high pressure O-ring composed of Nitrile Buna.

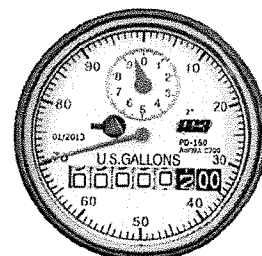
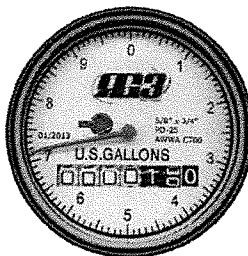
RG3 Meter Company
2912 S. Access Rd.
Longview TX, 75602
Ph:903-753-3456 | Fax:903-753-5678
www.rg3meter.com



Direct Read Sealed Registers - The register is of the straight reading sealed magnetic drive type and contains six (6) numeral wheels. Registers are hermetically sealed to prevent fogging. Registers are roll sealed and dry with a 360° test view. All direct reading register cups are made of copper to prevent corrosion and covered with a high strength, impact-resistant glass lens to prevent breakage. Registers are vacuumed. Register boxes and lids are made of high-strength polymer or brass. All registers are secured to the main case by means of a tamper-proof Torx screw to allow for in-line service replacement.

Register includes the following:

- Company name
- Month and year of manufacture
- Center sweep hand
- Large, easy to read numbers
- Size of meter
- Type of reading
- (Example U.S. Gallons, Cubic Feet, or m3)
- Diamond shaped indicator detecting low flow or leaks



Register includes odometer, which will give the total amount of water. One sweep of the hand will be equal to:

- 5/8" - 1" meters 10 gallons/1 cu ft
- 1 1/2" - 2" meters 100 gallons/10 cu ft

Register Options -

- Direct Read - Bronze or Engineered Plastic
- Tesla 4 MTR - AMR / AMI - RF Meter Transceiver Register
- Tomahawk - AMR/AMI - Encoder Register

Magnetic Drive - Meters use high strength magnets to provide positive, reliable and dependable register coupling.

Characteristics- Meets or exceeds latest revision of AWWA C700 Dimensional Standards. Rated at 122°F.

All Bronze Construction	Optional Check Valve	Direct Read & AMR/AMI Register Options	American Made	Large Numbers for Easy Reading	Excellent Start Up & Low Flow Rate	Built-in Strainer
-------------------------	----------------------	--	---------------	--------------------------------	------------------------------------	-------------------

Tamper-proof Features - Registers shall contain a locking device to prevent theft of water usage. Removing the register shall require a special tool that is available only to water utilities.

Maintenance -The measuring chamber assembly can be removed in order to be repaired or replaced.

Warranty - Standard 10 year new meter accuracy warranty and 25 year main case warranty.

*** Refer to full warranty for detailed warranty guidelines and standards.**

RG3 Meter Company
 2912 S. Access Rd.
 Longview TX, 75602
 Ph:903-753-3456 | Fax:903-753-5678
www.rg3meter.com



Perpetual® Low Lead Meters

Positive Displacement - Cold Water Meters

5/8" (DN 15mm), 3/4" (DN 20mm), 1" (DN 25mm)



Meter Transceiver Register
(MTR) - AMR/AMI



Meter Transceiver Register
(MTR) - AMR/AMI



Perpetual® PD - Bottom View



Direct Read

Model		PPD 05	PPD 07	PPD 08S	PPD 08L	PPD 10
Size		5/8 x 1/2"	5/8x3/4"	3/4"	3/4"	1"
Start Flow	USGPM	1/32 (.03)	1/32 (.03)	1/16 (.0625)	1/16 (.0625)	1/8 (.125)
Low Flow	USGPM	3/16 (.18)	3/16 (.18)	1/4 (.25)	1/4 (.25)	1/4 (.25)
Continuous	USGPM	15	15	20	20	25
High Flow	USGPM	20	20	30	30	50
Extreme High Flow (Intermittent)	USGPM	28	28	35	35	65
Max. Pressure Plastic Bottom	P.S.I.	250	250	250	250	250
Max. Pressure Brass Bottom	P.S.I.	300	300	300	300	300
Max. Pressure Cast Iron Bottom	P.S.I.	250	250	250	250	250
Max. Temp.	Deg. F	122°	122°	122°	122°	122°
Length	Inches	7 1/2"	7 1/2"	7 1/2"	9"	10 3/4"
Height	inches	4 13/16"	4 13/16"	5 1/2"	5 1/2"	6 7/8"
Weight	Pounds	3.4LBS	3.4LBS	6.4LBS	6.4LBS	11.2LBS
Ends		Threaded	Threaded	Threaded	Threaded	Threaded

*Due to continuous research and product enhancement, RG3 Meter Company reserves the right the change product or system specifications without notice, except to the extent an outstanding contractual obligation exists.

RG3 Meter Company
2912 S. Access Rd.
Longview TX, 75602
Ph:903-753-3456 | Fax:903-753-5678
www.rg3meter.com



Positive Displacement Large Cold Water Meters

1 1/2" - 2"



Specifications

Applications - For use in measurement of potable cold water in residential, commercial and industrial services where flow is in one direction only.

General- All cold water meters (Positive Displacement 1 1/2" - 2") conform to the "Standard Specification for Cold Water Meters" C700 latest revision issued by AWWA or as otherwise stated.

Measuring Chambers - Measuring chambers as made of suitable engineering plastics to meet AWWA C700- Standards/ the piston has approximately the same specific gravity as water. All spindles as stainless steel.

Lead Free Main Case - Main casings are made of a copper alloy that meets the latest AWWA C700 Standards. The meter main case are cast from NSF/ANSI 61, certified lead free alloy. Meters also meet the changes to the Safe Drinking Water Act (NSF 372) that become effective January 4, 2014. The serial number is permanently marked on the body, along with the size, direction of flow and manufacturer (RG3). Bolts are made of stainless steel to prevent corrosion. Bottom plates are available in suitable engineering plastic, copper alloy or cast-iron.

Main Case	Lead Free Bronze
Measuring Unit	Thermoplastic
O-Ring	Nitrile Rubber
Magnet	Ceramic Ferrite
Strainer	Thermoplastic
Register Lens	Tempered Glass
Register Housing & Lid	Bronze or Polymer
Gearing Wheels	Thermoplastic
Bottom Plates	Bronze or Polymer

Installation - The meter must be installed in a clean pipeline, free from any foreign materials. The meter shall be installed with the direction of flow as indicated by the arrow cast in the meter case. The meter may be installed in horizontal or inclined lines.

Strainers - All meters have a strainer installed in the meter and made of a polypropylene plastic. Strainers are located near the inlet port in the main case just before the measuring chamber. Strainer screens are rigid, snug fitting, easy to remove and have an effective straining area of at least double that of the main-case inlet. All strainers are easily removable and replaceable.

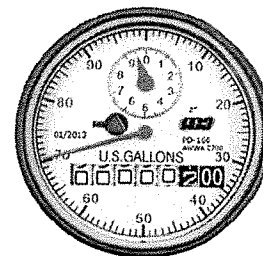
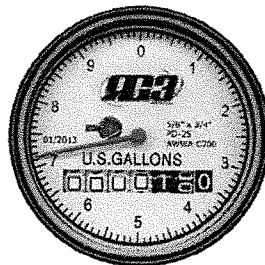
RG3 Meter Company
2912 S. Access Rd.
Longview TX , 75602
Ph:903-753-3456 Fax:903-753-5678
www.rg3meter.com



Direct Read Sealed Registers - The register is made of the straight reading sealed magnetic drive type and contain six (6) numeral wheels. Registers are hermetically sealed to prevent fogging. Registers are roll sealed and dry with a 360° test view. All direct reading register cups are made of copper to prevent corrosion and covered with a high-strength, impact-resistant glass lens to prevent breakage. Registers are vacuumed. Register boxes and lids are made of high-strength polymer or brass. All registers are secured to the main-case by means of a tamper-proof Torx screw to allow for in-line service replacement.

Register includes the following:

- Company name
- Month and year of manufacture
- Center sweep hand
- Large, easy to read numbers
- Size of meter
- Type of reading
- (Example U.S. Gallons, Cubic Feet, or m3)
- Diamond shaped indicator detecting low flow or leaks



Register includes odometer, which will give the total amount of water. One sweep of the hand will be equal to:

1 1/2 thru 2" meters 100 gallons/10 cu ft

Register Options

- Direct Read - Bronze or Engineered Plastic
- Tesla 4 MTR - AMR / AMI - RF Meter Transceiver Register
- Tomahawk - AMR/AMI - Encoder Register

Magnetic Drive - Meters use high strength magnets provides positive, reliable and dependable register coupling.

Characteristics- Meets or exceeds latest revision of AWWA C700 Dimensional Standards. Rated at 122".

All Bronze Construction	Optional Check Valve	Direct Read & AMR/AMI Register Options	American Made	Large Numbers for Easy Reading	Excellent Start Up & Low Flow Rate	Built-in Strainer
-------------------------	----------------------	--	---------------	--------------------------------	------------------------------------	-------------------

Tamper-proof Features - Registers shall contain a locking device to prevent theft of water usage. Removing the register shall require a special tool that is available only to water utilities.

Maintenance -The measuring chamber assembly can be removed in order to be repaired or replaced.

Warranty - Standard 5 year new meter accuracy warranty and a 25 year standard warranty.

*** Refer to full warranty for detailed warranty guidelines and standards.**

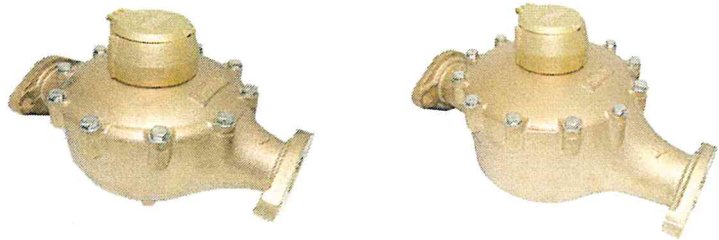
RG3 Meter Company
 2912 S. Access Rd.
 Longview TX, 75602
 Ph:903-753-3456 Fax:903-753-5678
www.rg3meter.com





Positive Displacement - Large Cold Water Meters

1 1/2" - 2"



Model		PD 15	PD 20
Size		1 1/2"	2"
Start Flow	USGPM	1/2	3/4
Low Flow	USGPM	1 1/2	2
Normal Flow	USGPM	5-100	8-160
High Flow	USGPM	100	160
Continuous	USGPM	50	80
Max Pressure Plastic Bottom	PSI	150	150
Max Pressure Bronze Bottom	PSI	150	150
Extreme High Flow (Intermittent)	USGPM	120	170
Max. Temp.	Deg. F	122°	122°
Length	Inches	13"	17"
Height	Inches	7 15/16"	8 1/2"
Weight	Pounds	25	34.6
Ends		Flanged	Flanged

*Due to continuous research and product enhancement, RG3 Meter Company reserves the right the change product or system specifications without notice, except to the extent an outstanding contractual obligation exists.

RG3 Meter Company
 2912 S. Access Rd.
 Longview TX, 75602
 Ph: 903-753-3456 Fax: 903-753-5678
www.rg3meter.com



PD-U00022916

Perpetual® Low Lead Meters

Positive Displacement Cold Water Meter Warranty

5/8" (DN 15mm), 3/4" (DN 20mm), 1" (DN 25mm)



Scope of Warranty

This warranty applies exclusively to RG3 Meter Company C700 Perpetual® water meters and direct read registers ("product") purchased and manufactured after August 1, 2012 and (1) used in potable water below 120° F in accordance with RG3 Meter Company's published Technical Specifications and (2) when installed in accordance with RG3 Meter Company's published installation instructions, both as in effect as of the date of RG3 Meter Company's shipment of the product. This guarantee applies exclusively to the original utility purchaser when product is purchased from RG3 Meter Company or an authorized distributor.

Materials and Workmanship

If used and installed as described above, RG3 Meter Company guarantees product covered by this guarantee to be free from defects in materials and workmanship for a period of 12 months after installation or 18 months after shipment by RG3 Meter Company, whichever occurs first.

Case Integrity

If used and installed as described above, RG3 Meter Company guarantees that the low lead bronze main cases of C700 Perpetual® meters will retain their structural integrity for a period of 25 years from date of RG3 Meter Company's shipment.

Register Functionality

If used and installed as described above, RG3 Meter Company guarantees that its direct read registers will function for 25 years from date of manufacture by RG3 Meter Company. AMR/AMI, encoder, and pulse register warranties are specified separately.

New Meter Accuracy

If used and installed as described above, RG3 Meter Company guarantees new C700 Positive Displacement Perpetual® meters covered by this warranty will meet or exceed the latest AWWA C700 New Meter Accuracy Standards until the first occurring event as specified below:

- 5/8" 10 years from date of RG3 Meter Company shipment or registered usage of 1,500,000 U.S. gallons;
- 3/4" 10 years from date of RG3 Meter Company shipment or registered usage of 1,500,000 U.S. gallons;
- 1" 10 years from date of RG3 Meter Company shipment or registered usage of 1,500,000 U.S. gallons;

Repaired Meter Accuracy

If used and installed as described above, RG3 Meter Company further guarantees that repaired C700 Perpetual® meters covered by this guarantee will meet or exceed the latest AWWA C700 repaired meter accuracy standards until the first occurring event as specified below:

- 5/8" 15 years from date of RG3 Meter Company shipment or registered usage of 2,500,000 U.S. gallons;
- 3/4" 15 years from date of RG3 Meter Company shipment or registered usage of 2,500,000 U.S. gallons;
- 1" 15 years from date of RG3 Meter Company shipment or registered usage of 3,250,000 U.S. gallons;



Perpetual® Low Lead Meters

Positive Displacement Cold Water Meter Warranty

5/8" (DN 15mm), 3/4" (DN 20mm), 1" (DN 25mm)

Extended Low Flow Accuracy

If used and installed as described above, RG3 Meter Company further guarantees that new C700 Perpetual® meters covered by this guarantee will meet or exceed the latest RG3 low flow accuracy standards until the first occurring event as specified below:

5/8" 5 years from date of RG3 Meter Company shipment or registered usage of 675,000 U.S. gallon;

3/4" 5 years from date of RG3 Meter Company shipment or registered usage of 675,000 U.S. gallons;

1" 5 years from date of RG3 Meter Company shipment or registered usage of 1,100,000 U.S. gallons;

Claims

Any product covered by this guarantee that fails to meet the terms of the stated guarantee will be repaired or replaced, at the option of RG3 Meter Company, according to the pro-rated schedule provided above. The replacement or repaired product will maintain the original warranty based on the original ship date. The customer is responsible for removing the product from service, returning it to the factory service center designated by RG3 Meter Company, providing a written RG3 Return Materials Authorization form (available at www.rg3meter.com) with the returned product, and for freight costs to the service center. Customer will also be responsible for freight from the service center if returned product performs as intended, is not eligible for warranty consideration, or does not meet warranty specifications. Customer is also responsible for reinstalling repaired or replaced product. Any product replaced becomes the property of RG3 Meter Company.

Limits of Liability

This warranty does not apply to product damaged by aggressive water conditions, foreign matter in water, vandalism, negligence, physical damage, installation not in accordance with RG3 Meter Company's installation instructions, misapplication or other use not as described above, acts of God or other conditions beyond the control of RG3 Meter Company. If a product is claimed to breach the accuracy guarantees as stated herein, the customer shall submit a certified copy of the test results at the time the product is returned to RG3 Meter Company. The guarantees as to accuracy shall be void if an examination of the customer's water supply shows an unusually adverse effect on product. Any description of product, whether in writing or made orally by RG3 Meter Company or its agents, specifications, samples, literature, models, bulletins, drawings, diagrams, engineering sheets or similar materials used in connection with any customer's order, inconsistent with the terms of this warranty, are for the sole purpose of identifying product and shall not be construed as an express or implied guarantee. Any suggestions by RG3 Meter Company or its agents regarding use, application or suitability of product shall not be construed as an express or implied guarantee unless confirmed to be such in writing by RG3 Meter Company. The laws of the State of Texas, excluding its conflicts of law rules shall exclusively govern this warranty. If any provision hereof, partly or completely, shall be held invalid or unenforceable, such invalidity or unenforceability shall not affect any other provision or portion hereof and these terms shall be construed as if such invalid or unenforceable provision or portion thereof had never existed.

THE FOREGOING EXPRESS GUARANTEE IS IN LIEU OF ALL OTHER GUARANTEES OR WARRANTIES WHATSOEVER, WHETHER EXPRESS, IMPLIED OR STATUTORY (EXCEPT FOR WARRANTY OF TITLE), INCLUDING BUT NOT LIMITED TO IMPLIED WARRANTIES OF MERCHANTABILITY AND FITNESS FOR A PARTICULAR PURPOSE. CUSTOMER'S EXCLUSIVE REMEDY AND RG3 METER COMPANY'S AND ITS AUTHORIZED DISTRIBUTORS' SOLE LIABILITY ON ANY CLAIM, WHETHER IN TORT (INCLUDING STRICT LIABILITY), NEGLIGENCE, CONTRACT, WARRANTY OR OTHERWISE, FOR ANY PRODUCT WHICH FAILS TO MEET THE TERMS OF THE GUARANTEE STATED ABOVE, SHALL BE LIMITED TO REPAIR OR REPLACEMENT AS DESCRIBED ABOVE. IN NO EVENT SHALL RG3 METER COMPANY AND/OR ITS AUTHORIZED DISTRIBUTORS BE LIABLE FOR INCIDENTAL OR CONSEQUENTIAL DAMAGES OF ANY KIND, INCLUDING BUT NOT LIMITED TO LOSS OF PROFITS OR REVENUE, LOSS OF USE, COST OF CAPITAL, COST OF SUBSTITUTE EQUIPMENT, FACILITIES OR SERVICES, DOWNTIME COSTS, DELAYS AND CLAIMS OF CUSTOMERS OF THE CUSTOMER OR OTHER THIRD PARTIES.

The limitations on liability set forth in this Warranty Agreement are fundamental inducements to RG3 Meter Company for entering into this Warranty Agreement. Such limitations on liability apply unconditionally and in all respects and are to be interpreted broadly to provide the RG3 Meter Company with the maximum protection permitted under law.

To the extent allowed by the laws of Texas, no damages will be recoverable and no Cause of Action may be instituted under this Warranty Agreement by anyone against RG3 Meter Company more than one year after a party knew or should have known a Cause of Action first arose.



Tomahawk™ Encoder



Description

Applications: The Tomahawk™ Encoder is a solid-state encoder with no mechanical numerical wheels. It can deliver an industry standard absolute encoded or scalable pulse output configurable to 1, 10, 100, 1000, 10,000 or 100,000 measurement unit intervals. It is designed for use with all RG3 meters and retrofit to most other manufacturer's meters (Badger, Master Meter, Neptune, Sensus, Hersey, etc.). Tomahawk™ provides communication with RG3 Tesla AMR/AMI endpoints and other AMR/AMI technology solutions approved by RG3 Meter Company.



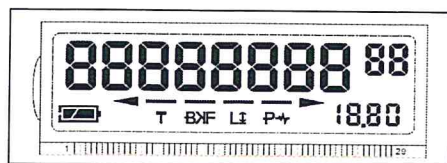
Specifications

Field Programmable: Tomahawk™ is factory programmed to customer specifications, with the option for field programming the unit of measure, the existing read if desired, and the ability to choose between an absolute encoded or pulse output.

Resolution for 5/8" to 4": "Absolute" 10-digit meter reading on the LCD with precise visual readings down to the hundredths of a gallon or thousandths of a cubic foot/meter. Electronic output includes 8-digit remote meter reading. 1 to 8 digits can be communicated for billing.

Resolution for 6" through 12" Meter Applications: "Absolute" 9-digit meter reading on LCD with precise visual readings down to the whole unit. Electronic output includes 8-digit remote meter reading. 1 to 8 digits can be communicated for billing.

Status Indicators: Indicators on the LCD show battery status, rate of flow, water movement, and alarm conditions including tamper, leak and back-flow.



LCD: Tomahawk™ is equipped with the largest LCD in the industry for easy reading at a distance of 6 feet. The LCD provides a 10-digit resettable totalizer and a 6 segment leak detector with flow direction arrows. Flow rate is clearly displayed in the applicable unit of measurement. Leak warnings are shown on the LCD as appropriate. Battery status is indicated on the LCD along with an early warning flag that informs the user when 20% or less battery life remains.

Encoder Type	Straight reading, permanently sealed, electronic LCD absolute encoder with field programmable options including pulse output.
Encoder Display	10-digit LCD totalizer, 6 segment leak detector, flow direction arrows, rate of flow, battery status, leak alarm, and back-flow alarm
Unit of Measure	U.S. gallons, Imperial gallons, cubic feet, cubic meters, and liters
Flow Rate	Units per Minute
Numerals	7.44 mm (.293") high and 7.24 mm (.285" wide)
Humidity	0 to 100% condensing
Temperature	-40° to 185°F (-40° to 85°C)
Status Indicators	Electronic and visual icons for: Totalizer, flow rate, back-flow, leak, battery indicator (including 20% battery life alarm)
Encoded Signal Output	Industry standard ASCII format
Pulse Signal Output	Configurable to 1, 10, 100, 1000, 10,000 or 100,000 gallon intervals
Signal Type	Three wire synchronous
Battery	C Cell lithium thionyl chloride, independently potted and fully encapsulated within Tomahawk housing
Battery Life	25 Years (calculated)
Warranty	25 Year (Prorated)



Itron & Aclara Approved



TEncoder-U000072315

Mounting: The fully potted encoder assembly has a bayonet mount compatible with all RG3 meters and most other manufacturer's meters as well. The bayonet mount allows Tomahawk™ to be positioned in any of four orientations for visual reading convenience. Tomahawk™ can be removed from the meter without disrupting water service.

Magnetic Drive Communication: Reliable and dependable register coupling is provided through a direct-drive, high-strength magnetic coupling through the meter body to the wetted magnet.

Tamper Resistant Features: Tomahawk™ is secured to the meter housing with a tamper resistant Torx screw. It can be installed at the factory or in the field.

Wire Connections: Tomahawk's™ easy connect protected electrical contact exterior screw terminals allow for simple removal and replacement of the wiring harness, eliminating the need for splicing wires and the possibility of associated corrosion. Screw terminal pins are molded into the engineered polycarbonate lens and back sealed with a potting compound eliminating any opportunity for moisture intrusion at the connections making Tomahawk™ suitable for installation in all environments, including continuously submerged water meter pits. Tomahawk™ is provided with pre-sized wire harnesses available for field connection or factory wired to RG3 approved AMR/AMI endpoints or a variety of lead wire lengths as specified by the customer. Tomahawk™ installs up to 600 feet away from the controller. Standardized lead lengths are 5 and 22 feet.

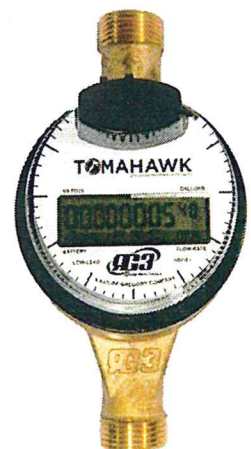
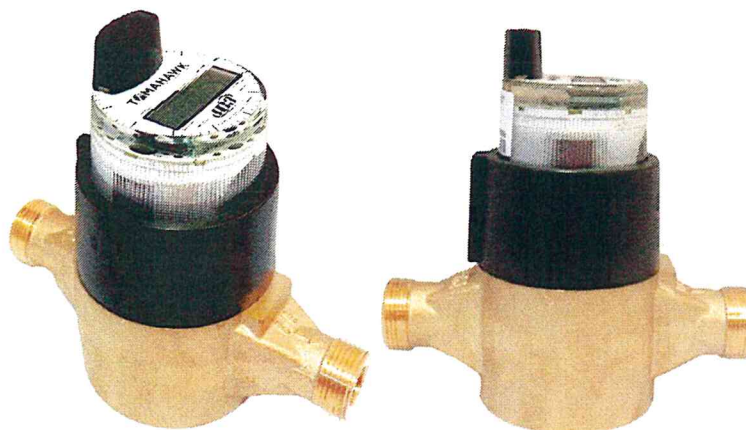
Electrical: Tomahawk's™ electronic circuitry is designed to provide immunity to electrical surges and transients per IEC801-2, IEC801-4 Severity Level 4.

Operating Characteristics: The digital reading obtained by an AMR/AMI device is retrieved directly from the register's internal magnetic sensor coupled to the wetted magnet through the meter body. Tomahawk's™ magnetic sensors are always on and always watching. This technology provides real time reads and eliminates interpretation of odometer wheels by means of LED, optical character recognition, or electromechanical contacts that could wear out. The Tomahawk™ solution provides superior long-term performance and the most accurate counting solution available.

Tomahawk on a Perpetual® PD Meter



Actual Size LCD



TEncoder-U000072315

Construction: Tomahawk's™ shroud assembly is constructed from engineered polycarbonate with a hermetically sealed stainless steel bottom. The enclosure is UV-resistant, weatherproof, and fully encapsulated to withstand harsh environments and to protect the solid state electronics in flooded or submerged pit applications. Electronic circuitry is gold plated to provide increased corrosion resistance before it is encapsulated by high quality endothermic potting material that diminishes the expansion and contraction related to temperature extremes. Electronics are designed to provide immunity to electrical surges. Tomahawk's™ counting mechanisms are permanently active magnetic sensors. Tomahawk™ uses magnetically driven thermoplastic floating gears to minimize friction and provide a long, reliable life. The power source is an internal lithium battery that is independently encapsulated in potting for redundant protection against moisture and provides 25 years of life.

Precision Counting: Tomahawk™ uses magnetic sensors that detect changes and disturbances in the magnetic field of the wetted meter magnet like flux, strength, and direction. This precision technology allows Tomahawk™ to accurately count with resolutions that far exceed the flow capabilities of any water meter, while remaining sensitive enough to count down to the thousandths of a gallon.

Water Movement Indicator: Six segments illuminate in succession ending in an arrow to demonstrate directionality and to simulate water flow. The water movement indicator activates immediately upon water movement. Cessation of segment movement demonstrates that water movement has stopped within the past 20 seconds. After 20 seconds all segments disappear.

Flow Rate: Flow rate is clearly displayed in the applicable unit of measurement and updated every 10 seconds. If the unit of measure is gallons, for example, displayed flow rates range from 1/10th gpm to 9,990 gpm.

Battery Status: Tomahawk™ uses a C cell lithium thionyl chloride battery to provide a true 25 year battery profile. Tomahawk™ adjusts the battery status indicator based on actual usage to provide the most accurate and up to date information to the utility. At 20% battery life remaining, the visual indicator on the LCD begins to blink to let the utility know the battery status. The new register can be field programmed with the old register's reading before replacement.

Tomahawk™ can Retro-Fit to the Following Manufactures Meters :



Badger Meter, Inc.



Hersey-Meters



NEPTUNE
TECHNOLOGY GROUP



TEncoder-U000072315

