

# PRODUCT INFORMATION PACKET

**marathon®**  
Motors

Model No: 5KH49PN3026X

Catalog No: H176

Fan and Blower Motor, .5,.17 HP, 1 Ph, 60 Hz, 115 V, 1800 RPM, 56 Frame, DP



Regal and Marathon are trademarks of Regal Rexnord Corporation or one of its affiliated companies.

©2023 Regal Rexnord Corporation, All Rights Reserved. MC017097E

**RegalRexnord**

**Nameplate Specifications**

Output HP	.5,.17 Hp	Output KW	0.37 kW
Frequency	60 Hz	Voltage	115 V
Current	8.0,4.2 A	Speed	1725,1140 rpm
Service Factor	1.25	Phase	1
Efficiency	64 %	Power Factor	0
Duty	Continuous	Insulation Class	B
Design Code	-	KVA Code	M
Frame	56	Enclosure	Drip Proof
Thermal Protection	Automatic	Ambient Temperature	40 °C
Drive End Bearing Size	6203	Opp Drive End Bearing Size	6203
UL	Recognized	CSA	Yes
CE	N	Number of Speeds	2

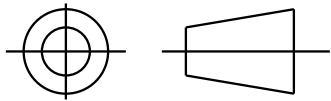
**Technical Specifications**

Electrical Type	Split Phase	Starting Method	SM
Poles	4	Rotation	Counterclockwise/Clockwise
Mounting	Resilient Base	Motor Orientation	ANY
Drive End Bearing	BALL	Opp Drive End Bearing	BALL
Frame Material	Rolled Steel	Overall Length	11.48 in
Frame Length	7.15 in	Shaft Diameter	0.630 in
Shaft Extension	1.88 in	Thru-bolts Extension	0 in
Connection Drawing	52A105385AC	Outline Drawing	52A109511P3

This is an uncontrolled document once printed or downloaded and is subject to change without notice. Date Created:03/15/2023

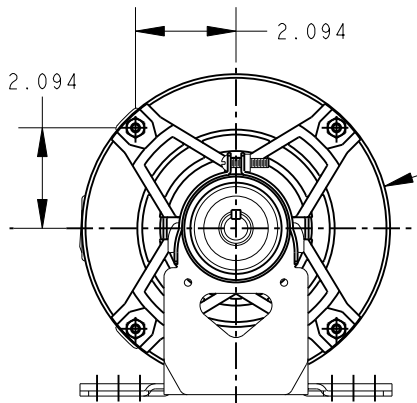
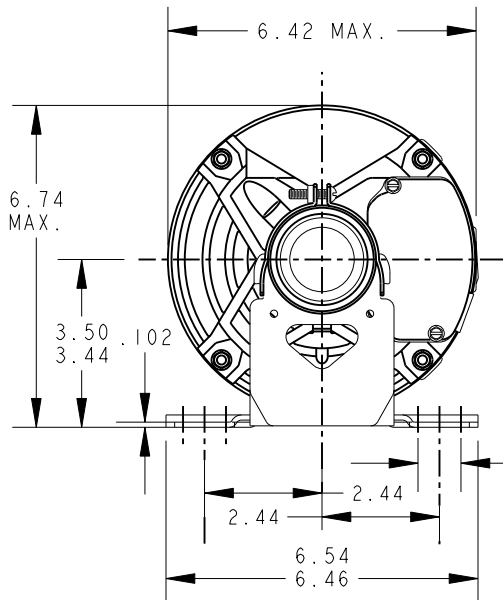
SHEET  
REV  
52A109511 3  
SIZE DRAWING NO.  
A

THIRD ANGLE PROJECTION

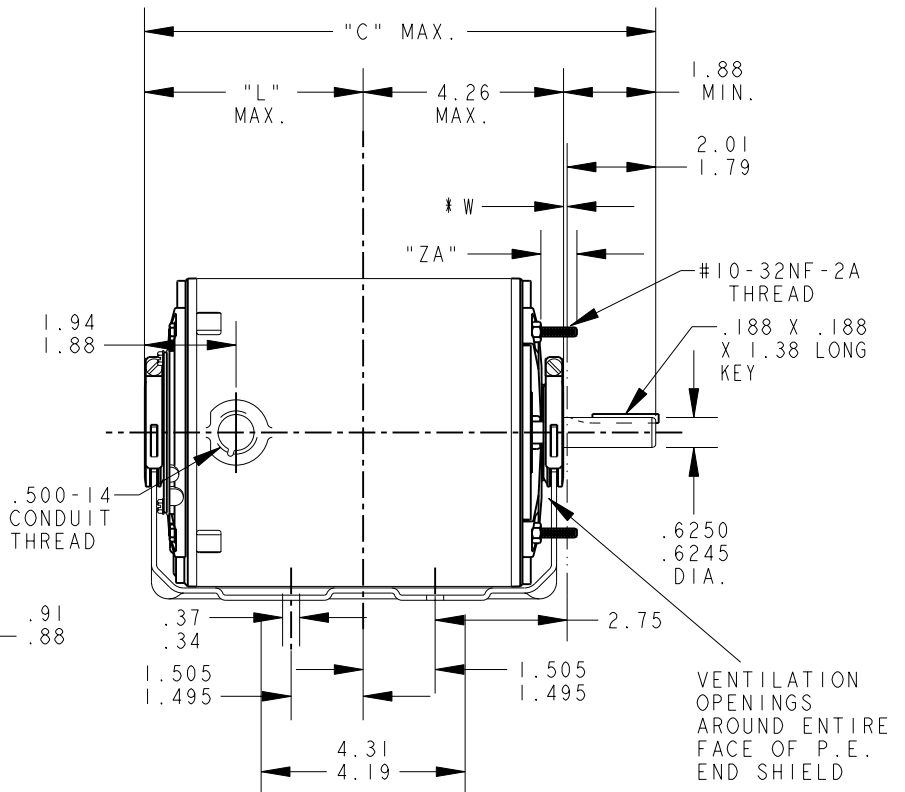


REVISIONS

REV.	DESCRIPTION	DATE	APPROVED
2	ADDED PART #4.	07/05/94	M.D.PAPE
3	CHG TO RBC FORMAT PER ISO5-1777	03/16/06	SUDHA




VIEW OF P.E.  
END SHIELD



#W IS A VARIABLE CLEARANCE DUE TO  
VARIATIONS IN PARTS AND ASSEMBLY

ALL DIMENSIONS ARE IN INCHES

4	KH/K	49	56	12.01	5.75	.62					7.68
3	KH/K	49	56	11.48	5.22	.62					7.15
2	KH/K	46	56	10.88	4.62	.62					6.55
1	KH/K	46	56	10.88	4.62	.62					6.55
P	TYPE	GE SIZE	NEMA FR.	"C"	"L"	"ZA"					MIN. SHELL

FOR ADDITIONAL INFO REFER TO:	SIGNATURES		DATE		REGAL-BELOIT CORPORATION		
	MODEL		MA MARKS		03/29/94	TITLE	OUTLINE
	DETAIL		.		.		
	CHECKED		.		.		
	ENGRG		.		.		
MFG		.	.	GENERAL PURPOSE MOTOR - DRIP PROOF - BALL			
QUALITY		.	.	BEARING - RESILIENT BASE EXTENDED CLAMP SCREWS FMF - 40 FRAME REDESIGN			
ISSUED		M.A.M.	03/29/94	SIZE	DRAWING	52A109511	REV
MATERIAL		SOLID MODEL: 52A109511		A			3
				SCALE: 0.250	REF. No: .	SHEET 1 of 1	

