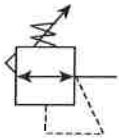
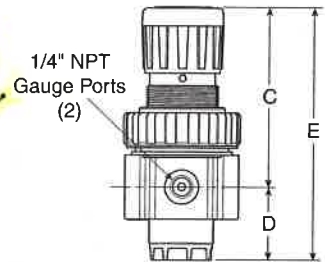
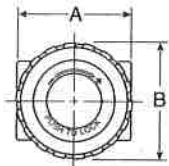


## 05R Regulators – Economy



### Features

- Secondary aspiration plus balanced poppet provides quick response and accurate pressure regulation.
- Rolling diaphragm for extended life.
- Removable non-rising knob for panel mounting and tamper resistance.
- Easily serviced.
- Reverse Flow.
- High Flow: 1/4" – 30 SCFM<sup>§</sup>  
 3/8" – 40 SCFM<sup>§</sup>



*P/N 05R114A*

*Page 1 of 2*

Port Size	NPT
Without Gauge	
1/4"	<b>05R113A*</b>
3/8"	<b>05R213A*</b>
With 160 PSI Gauge	
1/4"	<b>05R118A*</b>
3/8"	<b>05R218A*</b>

05R Regulator Dimensions		
A	B	C
2.00 (51)	2.06 (52)	3.16 (80)
D	E	
1.28 (32)	4.44 (113)	

Inches (mm)

Standard part numbers shown bold. For other models refer to ordering information below.

NOTE: 1.53 Dia. (39mm) hole required for panel mounting.

§ SCFM = Standard cubic feet per minute at 100 psig inlet, 90 psig no flow secondary setting and 10 psig pressure drop.

### Ordering Information

05R	1	14	A	*	—	—	---
-----	---	----	---	---	---	---	-----

Port Size	Pressure Range	Relief	Engineering Level	Port Type	Options	Preset / Pressure Limited
1 1/4 Inch 2 3/8 Inch	Without Gauge 10 30 psig <b>11 60 psig</b> <b>13 125 psig</b> 14 200 psig With Gauge** 17 30 psig <b>16 60 psig</b> <b>18 125 psig</b> <b>19 200 psig</b>	<b>A Relieving</b> L Non-Relieving H Low Temp. Relieving J Low Temp. Non-Relieving	* Will be Entered at Factory	Blank NPT 1* BSPP 2 BSPT	Blank No Options L† Preset Non-Adjustable P† Preset Adjustable S† Pressure Limiter Max. Adjustable T† Pressure Limiter Max. Non-Adjustable	<b>Blank None</b> XXX* Preset Pressure XXX* Pressure Limited
	** Includes 1-1/2" Dial Face Gauge			* 1/4 & 3/8 inch meet ISO 1179-1 Standard.	† Inlet Pressure is 100 psig. For other pressures, contact factory.	* Available Preset / Pressure Limited Range, 10 to 90 psig in 5 psig increments. For higher pressures, contact factory. (Example: 065 = 65 psig)

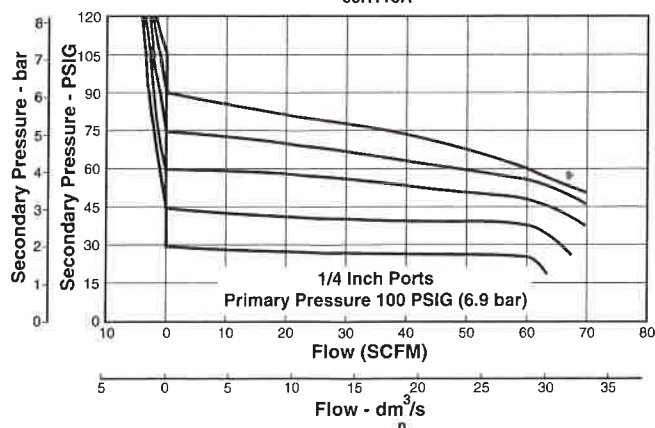
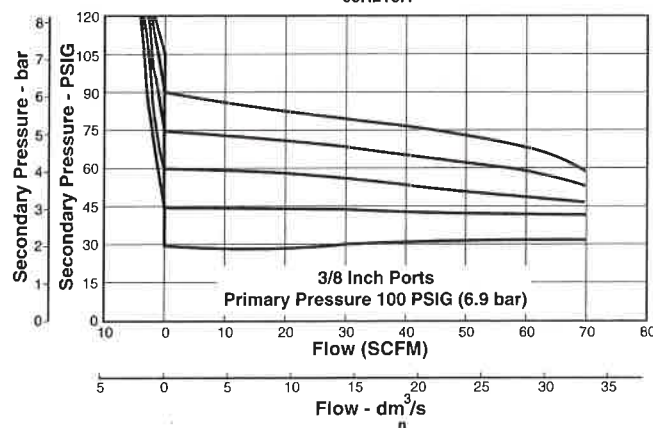
#### Spring Type by Preset / Limited Pressure:

For Preset / Limited Pressure 10 to 25 use 30 PSI Spring  
 For Preset / Limited Pressure 26 to 50 use 60 PSI Spring  
 For Preset / Limited Pressure 51 to 90 use 125 PSI Spring

**BOLD ITEMS ARE MOST POPULAR.**



## Technical Information

Relief and Flow Characteristics  
05R113A\*Relief and Flow Characteristics  
05R213A\***CAUTION:**

**REGULATOR PRESSURE ADJUSTMENT** – The working range of knob adjustment is designed to permit outlet pressures within their full range. Pressure adjustment beyond this range is also possible because the knob is not a limiting device. This is a common characteristic of most industrial regulators, and limiting devices may be obtained only by special design.

For best performance, regulated pressure should always be set by increasing the pressure up to the desired setting.

**⚠ WARNING**

Product rupture can cause serious injury.  
Do not connect regulator to bottled gas.  
Do not exceed maximum primary pressure rating.

Page 2  
of 2

**05R Regulator Kits & Accessories**

Bonnet Assembly Kit .....	PS915P
Control Knob .....	P04420
<b>Gauges – 1-1/2" Dial Face</b>	
30 psig (0 to 2.1 bar) .....	K4515N14030
60 psig (0 to 4.1 bar) .....	K4515N14060
160 psig (0 to 11.0 bar) .....	K4515N14160
300 psig (0 to 20.0 bar) .....	K4515N14300
<b>2" Dial Face</b>	
60 psig (0 to 4.1 bar) .....	K4520N14060
160 psig (0 to 11.0 bar) .....	K4520N14160
300 psig (0 to 20.0 bar) .....	K4520N14300
Mounting Bracket Kit .....	PS963P
Panel Mount Nut – Metal .....	PS964P
<b>Springs – 1-30 psig Range</b>	
1-60 psig Range .....	P04427
2-125 psig Range .....	P04426
2-200 psig .....	P02934
<b>Service Kit – Relieving</b>	
Non-Relieving .....	PS908P
	PS909P

**Specifications**

Gauge Ports (2) .....	1/4 Inch
Port Threads .....	1/4, 3/8 Inch
<b>Primary Pressure Rating –</b>	
Maximum Primary Pressure .....	300 psig (17.2 bar) Max.
For Secondary Pressure Ranges see above charts.	
<b>Temperature Rating</b>	
32°F to 175°F (0°C to 80°C)	
Low Temperature .....	-4°F to 125°F (-20°C to 52°C)
Weight .....	1.1 lb. (0.49 kg)

**Materials of Construction**

Adjusting Stem .....	Brass
Bonnet .....	Plastic
Body .....	Zinc
Collar, Knob .....	Plastic
Diaphragm .....	Nitrile
Poppet & Cap .....	Plastic
Seals .....	Nitrile
Springs – Poppet & Control .....	Steel