

# Jefferson Parish, Louisiana

## Wastequip Bid Response



Bid No.: 50-00125015

Bid Title: One Time Purchase of 10 Cubic  
Yard HD Flat Front Load Containers

Bid Due: December 11, 2018

Bid Opening Time: 11:00 am



(Corporate Headquarters)

6525 Morrison Blvd., Suite 300

Charlotte, NC 28211

877.468.9278

[www.wastequip.com](http://www.wastequip.com)

**ORIGINAL**

# WASTEQUIP®

## Corporate Profile

Founded in 1989 by Chuck Walton, Wastequip was created to consolidate the highly fragmented and regionalized waste equipment manufacturing sector.



The vision was simple: to provide the rapidly growing base of large national haulers a one-stop shop for their most significant needs including standardized equipment, highly durable products, inventory availability, faster delivery and outstanding customer service needed to continue their growth trajectory.

To achieve this goal, the company immediately set out to establish an extensive North American manufacturing and service footprint. Over the course of the next nearly 25 years, Wastequip systematically acquired the top companies and best brands from tarping systems and vacuum trucks to hoists and carts, including Galbreath, Cusco, Accurate, Mountain Tarp, Pioneer, and finally, Toter, – the industry’s premier line of plastic waste and recycling carts and containers - uniting them under the Wastequip umbrella.

Headquartered in Charlotte, N.C. with manufacturing and service facilities throughout North America, Wastequip is the leading North American manufacturer of waste handling and recycling equipment. With over 2,000 employees and 31 facilities, Wastequip has built a reputation for manufacturing expertise and product innovation. Privately held, Wastequip is the only manufacturer to offer a full line of steel and plastic products to collect, handle and transport just about any type of waste and recyclables.

Our comprehensive product line includes the top brands in their respective areas:

- **Wastequip** brand compactors, balers, steel containers and environmental containers
- **Toter** brand plastic carts and containers
- **Galbreath** brand hoists, container handlers and trailers
- Tarping systems, sold through our **Mountain Tarp** and **Pioneer** brands
- Industrial vacuum trucks and hydro excavators sold through our **Cusco** brand
- OEM and aftermarket parts sold through **Go To Parts**

Wastequip has locations throughout the U.S. and Canada, allowing us to serve many of our customers on a local level and creating economies of scale not possible with smaller manufacturers. Since many of our brand companies serve sectors in which it can be difficult and costly to ship products from remote locations, this gives us a distinct advantage over competitors with a smaller footprint.

Wastequip has strong partnerships with large national haulers, as well as many of the smaller regional and local players, and our products are currently in use in thousands of municipalities across the country. We’ve also developed strong fleet relationships across other market segments. Many of these customer relationships have been in place for many years, giving us a strong competitive advantage and creating a barrier to entry for other organizations.



**5000125015 A PURCHASE OF (1) 10 CUBIC YARD HEAVY DUTY FLAT  
FRONT LOAD CONTAINER**  
Jefferson Parish Government

Project documents obtained from [www.CentralBidding.com](http://www.CentralBidding.com)  
07-Dec-2018 01:13:56 PM



# JEFFERSON PARISH

## Department of Purchasing

Michael S. Yenni  
Parish President

Renny Simno  
Director

November 2018

### CHANGES TO JEFFERSON PARISH BIDDING PROCEDURES

- **As of November 13, 2018, for all advertised (2:00 pm) bids, the bid tabulation will be released to the vendors 14 days from the bid opening date.**

Other continued changes:

- Bid submissions can be delivered to the Joseph S. Yenni Building, 1221 Elmwood Park Blvd., Suite 404, Jefferson, LA 70123 or General Government Building, 200 Derbigny St., Suite 4400, Gretna, LA 70053. Bidders may submit bid submission to the East Bank location, pending authorization in each bid package. **Bidders should carefully read and must respond accordingly per the requirements of the bid packages. NOTE: Bidders submitting bids on the day of bid opening, bidders must submit at the West Bank location only.**
- For all advertised sealed bids, written evidence of signature authority must be included with bid submission.
- Current W9 Forms and vendor applications may be submitted at any time; however, if your company is not registered and/or a current W-9 form is not on file, a current W-9 form must be supplied upon contract execution, should you be awarded a contract and/or issued a purchase order.
- **Proof of insurance in the form of a current certificate evidencing coverages is required with bid submission from all bidders.** Bidders must read the insurance requirement attachment included in each bid package for specific instructions. Upon contract execution, successful bidder must produce final insurance certificates in accordance with Jefferson Parish insurance requirements.

**Bidders should reference the "Additional Requirements" section of the bid instructions and/or the "Important Notice to Bidders" included in the bid package for specific requirements to respond accordingly.**

For more information, please call Jefferson Parish Purchasing at 504-364-2678.

Joseph S. Yenni Building – 1221 Elmwood Park Blvd., Ste. 404, Jefferson, LA 70123  
Office 504.364.2678  
General Government Bldg. – 200 Derbigny St – Suite 4400 - Gretna, LA 70053  
Office 504.364.2678  
Email: [Purchasing@jeffparish.net](mailto:Purchasing@jeffparish.net) Website: [www.jeffparish.net](http://www.jeffparish.net)



**Bid Number 50 - 00125015**

A purchase of (1) 10 Cubic yard heavy duty flat front load container

**December 12, 2018 at 11:00 am**

**ATTENTION VENDORS!!!**

**Please review all pages and respond accordingly, complying with all provisions in the technical specifications and Jefferson Parish Instructions for Bidders and General Terms and Conditions. All bids must be received in the Purchasing Department by the bid due date and time.**

**Jefferson Parish Purchasing Department  
200 Derbigny Street  
General Government Building, Suite 4400  
Gretna, LA 70053  
Buyer Name: Doris Abraham, Buyer I  
Buyer Email: [dabraham@jeffparish.net](mailto:dabraham@jeffparish.net)  
Buyer Phone: 504-364-2690**



DATE: 12/07/2018

**INVITATION TO BID  
THIS IS NOT AN ORDER**

Page: 1

BID NO.: 50-00125015

**JEFFERSON PARISH**

PURCHASING DEPARTMENT  
P.O. BOX 9  
GRETN, LA. 70054-0009  
504-364-2678

VENDOR:

BUYER: DABRAHAM@jeffparish.net

**Bids will be received until 11:00 AM, 12/12/2018 via online at [www.jeffparishbids.net](http://www.jeffparishbids.net) or by hand delivery, USPS mail or other courier service to Purchasing Department, 200 Derbigny Street (General Government Building), Suite 4400, Gretna, LA 70053. For convenience, bidders may also submit bids in the East Bank Purchasing Department, Suite 404, Jefferson Parish Joseph S. Yenni Building, 1221 Elmwood Park Blvd., Jefferson LA 70123. However, if submitting bids on the day of bid opening, bidders must submit at the West Bank location only.**

All bids submitted are subject to these instructions and general conditions and any special conditions and specifications contained herein, all of which are made part of this bid proposal reference. By submitting a bid, vendor agrees to comply with all provisions of Louisiana Law, as well be in compliance with the Jefferson Parish Code of Ordinances, Louisiana Code of Ethics, applicable Jefferson Parish ethical standards and Jefferson Parish Resolution No. 113646 and/or Resolution No. 113647. A copy of these resolutions may be obtained from the Office of the Parish Clerk, Suite 6700, Jefferson Parish General Government Building, 200 Derbigny Street, Gretna, LA 70053. You may also obtain a copy by visiting the Purchasing Department webpage at [purchasing.jeffparish.net](http://purchasing.jeffparish.net) and clicking on On-line forms.

All vendors submitting bids should register as a Jefferson Parish vendor if not already yet registered. Registration forms may be downloaded from <http://purchasing.jeffparish.net> and by clicking on Vendor Information. Current W-9 forms with respective Tax Identification numbers and vendor applications may be submitted at any time; however, if your company is not registered and/or a current W-9 form is not on file, vendor registration is mandatory. Further, a current W-9 form and respective Tax Identification number must be supplied upon contract execution, should you be awarded a contract and/or issued purchase order. Failure to do so may result in delay of payment.

As per LSA-RS 47:301 et seq., all governmental bodies are excluded from payment of sales taxes to any Louisiana taxing body. Quotations shall be based on F.O.B. Delivered, anywhere within the Parish as designated by the Purchasing Department. JEFFERSON PARISH WILL ACCEPT ONE BID ONLY FROM EACH VENDOR. Items bid must meet specifications. JEFFERSON PARISH will accept one price for each item unless otherwise indicated. Two or more prices for one item will result in bid rejection. Bidders are required to complete, sign and return the bid form and/or complete and return the associated line item pricing forms as indicated. The price quoted for work shall be stated in figures. In the event there is a difference in unit prices and totals, the unit prices shall prevail.

JEFFERSON PARISH reserves the right to award contracts or place orders on a lump sum or individual item basis, or such combination, as shall in its judgment be in the best interest of JEFFERSON PARISH. Every contract or order shall be awarded to the LOWEST RESPONSIVE and RESPONSIBLE BIDDER, taking into consideration the CONFORMITY WITH THE SPECIFICATIONS and the DELIVERY AND/OR COMPLETION DATE

**PROTESTS:** Only those vendors that submitted a bid in response to this solicitation may submit a protest in writing to the Director of the Purchasing within 48 hours of bid opening. The Purchasing Director will review it in connection with the Parish Attorney's Office as appropriate and a written response will be provided as soon as possible.

JEFFERSON PARISH reserves the right to cancel all or any part of an order if not shipped promptly. No charges will be allowed for parking or cartage unless specified in the quotation. The order must not be filled at a higher price than quoted. JEFFERSON PARISH reserves the right to cancel at any time and for any reason by issuing a THIRTY (30) day written notice to the contractor.

JEFFERSON PARISH requires all products to be new (current) and all work must be performed according to standard practices for the project. Unless otherwise specified, no aftermarket parts will be accepted. Unless otherwise specified, all workmanship and materials must have at least one (1) year guaranty, in writing, from the date of delivery and/or acceptance of the project. Any deviations or alteration from the specifications must be indicated on the bid form for each item and upon request, product data for same must be submitted by the time specified by the Purchasing Department.

If this bid requires a pre-bid conference (see Additional Requirements section), bidders are advised that such conference will be held to allow bidders the opportunity to identify any discrepancies in the bid specifications and seek further clarification regarding instructions. The Purchasing Department will issue a written response to bidders' questions in the form of an Addendum.

All formal Addenda require written acknowledgment on the bid form by the bidder. Failure to acknowledge an Addendum on the bid form shall cause the bid to be rejected; JEFFERSON PARISH reserves the right to award bid to next lowest responsive and responsible bidder in this event.

**USE OF BRAND NAMES AND STOCK NUMBERS:** Where brand names and stock numbers are specified, it is for the purpose of establishing certain minimum standards of quality. Bids may be submitted for products of equal quality, provided brand names and stock numbers are specified. Complete product data may be required prior to award.

Quantities listed are for bidding purposes only. Actual requirements may be more or less than quantities listed.

Bidders are not to exclude from participation in, deny the benefits of, or subject to discrimination under any program or activity, any person in the United States on the grounds of race, color, national origin, or sex; nor discriminate on the basis of age under the Age Discrimination Act of 1975, or with respect to an otherwise qualified handicapped individual as provided in Section 504 of the Rehabilitation Act of 1973, or on the basis of religion, except that any exemption from such prohibition against discrimination on the basis of religion as provided in the Civil Rights Act of 1964, or Title VI and VII of the Act of April 11, 1968, shall also apply. This assurance includes compliance with the administrative requirements of the Revenue Sharing final handicapped discrimination provisions contained in Section 51.55 (c), (d), (e), and (k)(5) of the Regulations. New construction or renovation projects must comply with Section 504 of the 1973 Rehabilitation Act, as amended, in accordance with the American National Standard Institute's specifications (ANSI A117.1-1961).

Jefferson Parish and its partners as the recipients of federal funds are fully committed to awarding a contract(s) to firm(s) that will provide high quality services and that are dedicated to diversity and to containing costs. Thus, Jefferson Parish strongly encourages the involvement of minority and/or woman-owned business enterprises (DBE's, including MBE's, WBE's and SBE's) to stimulate participation in procurement and assistance programs.

DATE: 12/07/2018

BID NO.: 50-00125015

Page: 2

**INSTRUCTIONS FOR BIDDERS AND GENERAL CONDITIONS****IN ACCORDANCE WITH STATE REGULATIONS JEFFERSON PARISH OFFERS ELECTRONIC PROCUREMENT TO ALL VENDORS**

This electronic procurement system allows vendors the convenience of reviewing and submitting bids online. This is a secure site and authorized personnel have limited read access only. Bidders are encouraged to submit electronically using this free service; while the website accepts various file types, one single PDF file containing all appropriate and required bid documents is preferred. Bidders submitting uploaded images of bid responses are solely responsible for clarity. If uploaded images/documents are not legible, then bidder's submission will be rejected. Please note all requirements contained in this bid package for electronic bid submission.

Please visit our E-Procurement Page at [www.jeffparishbids.net](http://www.jeffparishbids.net) to register and view Jefferson Parish solicitations. For more information, please visit the Purchasing Department page at <http://purchasing.jeffparish.net>.

**ADDITIONAL REQUIREMENTS FOR THIS BID**

PLEASE MATCH THE NUMBERS PRINTED IN THIS BOX WITH THE CORRESPONDING INSTRUCTIONS BELOW.

13

1. All bidders must attend the MANDATORY pre-bid conference and will be required to sign in and out as evidence of attendance. In accordance with LSA R.S. 38:2212(I), all prospective bidders shall be present at the beginning of the MANDATORY pre-bid conference and shall remain in attendance for the duration of the conference. Any prospective bidder who fails to attend the conference or remain for the duration shall be prohibited from submitting a bid for the project.
2. Attendance to this pre-bid conference is optional. However, failure to attend the pre-bid conference shall not relieve the bidder of responsibility for information discussed at the conference. Furthermore, failure to attend the pre-bid conference and inspection does not relieve the successful bidder from the necessity of furnishing materials or performing any work that may be required to complete the work in accordance with the specification with no additional cost to the owner.
3. Contractor must hold current applicable JEFFERSON PARISH licenses with the Department of Inspection and Code Enforcement. Contractor shall obtain any and all permits required by the JEFFERSON PARISH Department of Inspection and Code Enforcement. The contractor shall be responsible for the payment of these permits. All permits must be obtained prior to the start of the project. Contractor must also hold any and all applicable Federal and State licenses. Contractor shall be responsible for the payment of these permits and shall obtain them prior to the start of the project.
4. A LA State Contractor's License will be required in accordance with LSA R.S. 37-2150 et. seq. and such license number will be shown on the outside of the bid envelope. Failure to comply will cause the bid to be rejected. Additionally if submitting the bid electronically, then the license number must be entered in the appropriate field in the Electronic Procurement system. Failure to comply will cause the bid to be rejected.
5. It is the bidder's responsibility to visit the job site and evaluate the job before submitting a bid.
6. Job site must be clean and free of all litter and debris daily and upon completion of the contract. Passageways must be kept clean and free of material, equipment, and debris at all times. Flammable material must be removed from the job site daily because storage will not be permitted on the premises. Precautions must be exercised at all times to safeguard the welfare of JEFFERSON PARISH and the general public.



DATE: 12/07/2018

BID NO.: 50-00125015

Page: 3

**INSTRUCTIONS FOR BIDDERS AND GENERAL CONDITIONS**

7. **PUBLIC WORKS BIDS:** All awards for public works in excess of \$5,000.00 will be reduced to a formal contract which shall be recorded at the contractor's expense with the Clerk of Court and Ex-Officio Recorder of Mortgages for the Parish of Jefferson. A price list of recordation costs may be obtained from the Clerk of Court and Ex-Officio Recorder of Mortgages for the Parish of Jefferson. All awards in excess of \$25,000.00 will require both a performance and a payment bond. Unless otherwise stated in the bid specifications, the performance bond requirements shall be 100% of the contract price. Unless otherwise state in the bid specifications, the payment bond requirements shall be 100% of the contract price. Both bonds shall be supplied at the signing of the contract.
8. **NON-PUBLIC WORKS BIDS:** A performance bond will be required for this bid. The amount of the bond will be 100% of the contract price unless otherwise indicated in the specifications. The performance bond shall be supplied at the signing of the contract.
9. **NON-PUBLIC WORKS BIDS:** A payment bond will be required for this bid. The amount of the bond will be 100% of the contract price unless otherwise indicated in the specifications. The payment bond shall be supplied at the signing of the contract.
10. All bidders must comply with the requirements stated in the attached "Standard Insurance Requirements" sheet attached to this bid solicitation. Prior to contract executions/purchase order issuance, the successful bidder will be required to provide final insurance certificates which shall name Jefferson Parish as an additional insured in accordance with the instructions in the aforementioned "Standard Insurance Requirements" sheet.
11. A bid bond will be required with bid submission in the amount of 5% of the total bid, unless otherwise stated in the bid specifications. Acceptable forms shall be limited to cashier's check, certified check, or surety bid bond. All sureties must be in original format (no copies). If submitting a bid online, vendors must submit an electronic bid bond through the respective online clearinghouse bond management system(s) as indicated in the electronic bid solicitation on Central Auction House. No scanned paper copies of any bid bond will be accepted as part of the electronic bid submission.
12. This is a requirements contract to be provided on an as needed basis. JEFFERSON PARISH makes no representations on warranties with regard to minimum guaranteed quantities unless otherwise stated in the bid specifications.
13. Freight charges should be included in total cost when quoting. If not quoted FOB DELIVERED, freight must be quoted as a separate item. Bid may be rejected if not quoted FOB DELIVERED or if freight charges are not indicated on bid form.
14. **PUBLIC WORKS BIDS - Completed, Signed and Properly Notarized Affidavits Required;** This applies to all solicitations for construction, alteration or demolition of public buildings or projects, in conformity with the provisions contained in LSA-RS 38:2212.9, LSA-RS 38:2212.10, LSA-RS 38:2224, and Sec 2-923.1 of the Jefferson Parish Code of Ordinances. For bidding purposes, all bidders must submit with bid submission COMPLETED, SIGNED and PROPERLY NOTARIZED Affidavits, including: Non-Conviction Affidavit, Non-Collusion Affidavit, Campaign Contribution Affidavit, Debt Disclosures Affidavit and E-Verify Affidavit. For the convenience of vendors, all affidavits have been combined into one form entitled PUBLIC WORKS BID AFFIDAVIT. This affidavit must be submitted in its original format, and without material alteration, in order to be compliant and for the bid to be considered responsive. A scanned copy of the completed, signed and properly notarized affidavit may be submitted with the bid, however, the successful bidder must submit the original affidavit in its original format and without material alteration upon contract execution. Failure to comply will result in the bid submission being rejected as non-responsive. The Parish reserves the right to award bid to the next lowest responsive and responsible bidder in this event.
15. **NON PUBLIC WORK BIDS - Completed, Signed and Properly Notarized Affidavits Required** in conformity with the provisions contained in LSA – RS 38:2224 and Sec 2-923.1 of the Jefferson Parish Code of Ordinances. For bidding purposes, all bidders must submit with bid submission COMPLETED, SIGNED and PROPERLY NOTARIZED Affidavits, including: Non-Collusion Affidavit, Debt Disclosures Affidavit and Campaign Contribution Affidavit. For the convenience of vendors, all affidavits have been combined into one form entitled NON PUBLIC WORKS BID AFFIDAVIT. This affidavit must be submitted in its original format, and without material alteration, in order to be compliant and for the bid to be considered responsive. A scanned copy of the completed, signed and properly notarized affidavit may be submitted with the bid, however, the successful bidder must submit the original affidavit in its original format and without material alteration upon contract execution. Failure to comply will result in the bid submission being rejected as non-responsive. The Parish reserves the right to award bid to the next lowest responsive and responsible bidder in this event.
16. The ensuing contract for this bid solicitation may be eligible for FEMA reimbursement and/or Federal funding/reimbursement. As such, the referenced appendix will be applicable accordingly and shall be considered a part of the bid documents. All applicable certifications must be duly completed, signed and submitted with bid submission. Failure to submit applicable certifications with bid submission will result in bid rejection.

It shall be the duty of every parish officer, employee, department, agency, special district, board, and commission; and the duty of every contractor, subcontractor, and licensee of the parish, and the duty of every applicant for certification of eligibility for a parish contract or program, to cooperate with the Inspector General in any investigation, audit, inspection, performance review, or hearing pursuant to Jefferson Parish Code of Ordinances Section 2-155.10(19). By submitting a bid, vendor acknowledges this and will abide by all provisions of the referenced Jefferson Parish Code of Ordinances.



DATE: 12/07/2018

INVITATION TO BID  
THIS IS NOT AN ORDER

Page: 4

BID NO.: 50-00125015

**JEFFERSON PARISH**PURCHASING DEPARTMENT  
P.O. BOX 9  
GRETN, LA. 70054-0009  
504-364-2678

VENDOR: Wastequip Manufacturing Company LLC

BUYER: DABRAHAM

As per LSA-RS 47:301 et seq., all governmental bodies are excluded from payment of sales taxes to any Louisiana taxing body. Quotations shall be based on F.O.B. Agency warehouse or jobsite, anywhere within the Parish as designated by the Purchasing Department.

JEFFERSON PARISH reserves the right to cancel all or any part of an order if not shipped promptly. No charges will be allowed for parking or cartage unless specified in quotation. The order must not be filled at a higher price than quoted. JEFFERSON PARISH reserves the right to cancel at any time and for any reason by issuing a THIRTY (30) day written notice to the contractor.

JEFFERSON PARISH is expecting all products to be new and all work to be done in workman-like manner, according to standard practices. Any deviations or alteration from the specifications must be indicated on the bid form for each item and upon request, product data for same must be submitted by the time specified by the Purchasing Department.

**DELIVERY: FOB JEFFERSON PARISH**

INDICATE DELIVERY DATE ON EQUIPMENT AND SUPPLIES

Not Applicable

INDICATE STARTING TIME (IN DAYS) FOR CONSTRUCTION WORK

Not Applicable

INDICATE COMPLETION TIME (IN DAYS) FOR CONSTRUCTION WORK

Not Applicable

In the event that addenda are issued with this bid, bidders MUST acknowledge all addenda on the bid form. Bidder must acknowledge receipt of an addendum on the bid form as indicated. Failure to acknowledge any addendum on the bid form will result in bid rejection.

Acknowledge Receipt of Addenda: NUMBER: None

NUMBER: \_\_\_\_\_

NUMBER: \_\_\_\_\_

NUMBER: \_\_\_\_\_

LOUISIANA CONTRACTOR'S LICENSE NO.: (if applicable) Not Applicable**\*\*\* ALL BIDDERS MUST COMPLETE SECTION BELOW \*\*\***

FIRM NAME:

Wastequip Manufacturing Company LLC

SIGNATURE:

(Must be signed here)

DocuSigned by:

*Larry Harvey*

TITLE:

VP-Finance

PRINT OR TYPE NAME:

90DDA6C55D1B45B...

Larry Harvey

ADDRESS:

(Bid Location) 841 Meacham Road

CITY, STATE:

Statesville, NC 28677

ZIP:

TELEPHONE:

(800)424-0422 Ext 244

FAX:

(704)878-0734

EMAIL ADDRESS:

mjenkins@wastequip.com

TOTAL PRICE OF ALL BID ITEMS: \$ 1,595.00

DATE: 12/07/2018

Page: 5

## INVITATION TO BID FROM JEFFERSON PARISH - continued

BID NO.: 50-00125015

SEALED BID

ITEM NUMBER	QUANTITY	U/M	DESCRIPTION OF ARTICLES	UNIT PRICE QUOTED	TOTALS
1	1.00	EA	<p>A purchase of (1) 10 cubic yard heavy duty flat front load container</p> <p>0001 10 CUBIC YARD HEAVY DUTY FLAT FRONT LOAD CONTAINER.  FLOOR: 7 GAUGE  WALLS: 10 GAUGE  DOORS: (2) 16 GAUGE SLIDING  POCKETS: HEAVY DUTY WITH THREE WAY FORK ENTRY GUIDE  INTERLOCKING TOP CHANNELS WITH FORMED 7 GAUGE BOTTOM RUNNERS  PRIMED AND PAINTED ANY STANDARD COLOR</p> <p>MODEL # 3-2988</p>	\$1,595.00	\$1.595.00
				Wastequip Quote # 10096332 Unit price includes freight. Unit price does not include sales tax. Customer to offload at time of delivery. Forklift recommended. Price valid for 30 days	



1261 W. Industrial Park Rd. NW, Brookhaven,  
MS, 39601

PHONE: 601-835-0922 FAX: 601-835-5036

WQ-10096332

#### Sell To:

Contact Name	Jo Ann Johnson	Ship To Name	Jefferson Parish
Bill To Name	Jefferson Parish	Ship To	3420 north Causeway Blvd., Ste B
Bill To	1221 Elmwood Parkway Blvd., Ste 402		Metairie, LA 70002
	Harahan, LA 70123		USA
	USA		
Email	jrjohnson@jeffparish.net		
Phone	(504) 736-6900		

#### Quote Information

Salesperson	Steve Hurtt	Created Date	11/8/2018
Salesperson Email	<a href="mailto:shurtt@wastequip.com">shurtt@wastequip.com</a>	Expiration Date	11/22/2018
Salesperson Phone	(469) 853-7729	Quote Number	WQ-10096332
			Please Reference Quote Number on all Purchase Orders

Model	Product Description	Selected Option	Quantity	Sales Price	Total Price
3-2988	10 Cubic Yard Heavy Duty Flat Front Load Container - Floor: 7 gauge, Walls: 10 gauge, Doors: (2) 16 gauge Sliding, Pockets: Heavy Duty with Three Way Fork Entry Guide, Interlocking Top Channels with formed 7 gauge Bottom Runners, Primed and Painted Any Standard Color	Color: Medium Blue	1.00	\$1,395.00	\$1,395.00

Payment Terms	Net 30 Days if credit has been established	Subtotal	\$1,395.00
Shipping Terms	FOB Origin	Shipping	\$200.00
		Tax	\$0.00
		Grand Total	\$1,595.00

#### Special Instructions

Special Instructions 1. Pricing: Due to the volatility in the current steel market, WASTEQUIP PRICING WILL BE HELD FOR 30 DAYS AFTER BID OPENING. After which time, if award or purchase order is not received, Wastequip reserves the right to adjust pricing to the current AMM Index rates as described in the attached Long-Term Price Modifier.

2. Delivery: Customer to off load at time of delivery. Containers will be delivered on a flatbed tractor trailer. Customer will need to provide equipment and operator to offload containers from trailer.

#### Additional Information

Additional Terms Our Quote is a good faith estimate, based on our understanding of your needs. Subject to our acceptance, your Order is an offer to purchase our Products and services in accordance with the Wastequip Terms & Conditions of Sale ("WQ T&C") located at: <https://www.wastequip.com/terms-conditions-of-sale>, as of the date set forth in Section 1(b) of the WQ T&C, which are made a part of this Quote. These WQ T&Cs may be updated from time to time and are available by hard copy upon request.

Additional Information \*\* Customer must have the ability to Off Load containers from shipping truck - Fork Lift recommended \*\*

Additional Information Pricing is based on your anticipated Order prior to the expiration of this Quote, including product specifications, quantities and timing. Any differences to your Order may result in different pricing, freight or other costs. Due to volatility in petrochemical, steel and related Product material markets, actual prices and freight, are subject to change. We reserve the right, by providing notice to you at any time before beginning Product manufacturing, to increase the price of the





1261 W. Industrial Park Rd. NW, Brookhaven,  
MS, 39601

PHONE: 601-835-0922 FAX: 601-835-5036

WQ-10096332

Product(s) to reflect any increase in the cost to us which is due to any factor beyond our control (such as, without limitation, any increase in the costs of labor, materials, or other costs of manufacture or supply). Unless otherwise stated, materials and container sizes indicated on sales literature, invoices, price lists, quotations and delivery tickets are nominal sizes and representations – actual volume, Products and materials are subject to manufacturing and commercial variation and Wastequip's practices, and may vary from nominal sizes and materials. All prices are in US dollars; this Quote may not include all applicable taxes, brokerage fees or duties. If customer is not tax exempt, final tax calculations are subject to change.

#### Signatures

Accepted By: \_\_\_\_\_

Company Name: \_\_\_\_\_

Date: \_\_\_\_\_

Purchase Order: \_\_\_\_\_

**Please Reference Quote Number on all Purchase Orders**

# FRONT END LOAD CONTAINERS



# Steel Front End Load (FEL) Containers

Wastequip Front End Load Containers (FELs) are engineered using heavy gauge steel to withstand the stress of continued use. Standard models feature 12 gauge sides and 10 gauge bottoms, high density polyethylene lids and fully welded in-seams. Our heavy duty models have 10 gauge sides and 7 gauge bottoms for added strength and durability.

Containers are primed inside and outside to reduce corrosion. Wastequip containers meet ANSI safety specifications and dimensional standards for haulers. With locations throughout North America, Wastequip can meet your container needs quickly.

**Styles:** Flat, slant, hatchback and nestable (slant and flat)

**Sizes:** 2, 3, 4, 6, 8, and 10 cubic yards



## FEATURES

### 1) FORK POCKETS:

- 3-way flared fork pockets protect from damage by the trucks forks and easily guides forks into the pockets
- Taco gussets welded to the bottom of the fork pockets help extend pocket life by providing added strength to the bottom of the pockets
- Fully welded pockets at critical stress points reduce fork damage and ensure long service life

### 2) CONSTRUCTION:

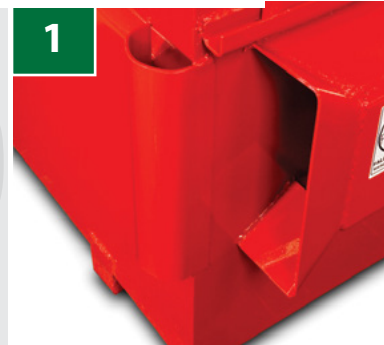
- Rounded bumper pads help prevent damage to the front of the container
- Floor channels are capped at both ends to prevent debris from getting inside and extend up the front and back walls to create extra support

### 2) CONSTRUCTION (CONT'D):

- Fully welded no-step gusset across the top of the fork pocket provides added safety and support
- Top edges are rounded and smooth for added safety during customer loading
- Interlocking top channel frame provides added strength
- Primed inside and outside to reduce corrosion
- Painted in one of several standard colors
- Nestable 2, 3 & 4 yard containers reduce shipping costs and required storage space

### 3) LIDS:

- Single wall, double lip lids ensure durability
- Optional lids upon request

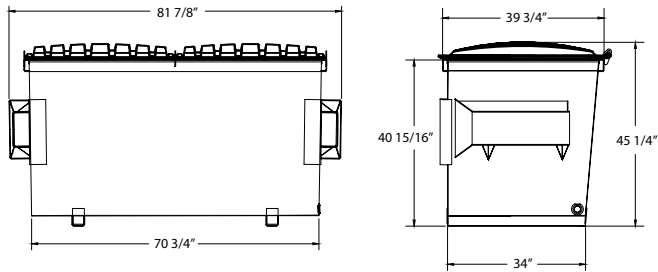




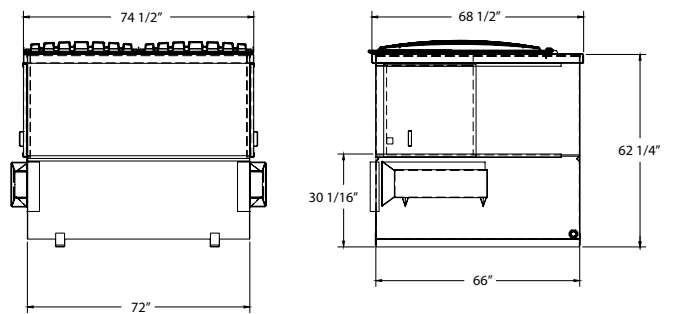
# FRONT END LOAD CONTAINERS

## FLAT TOP

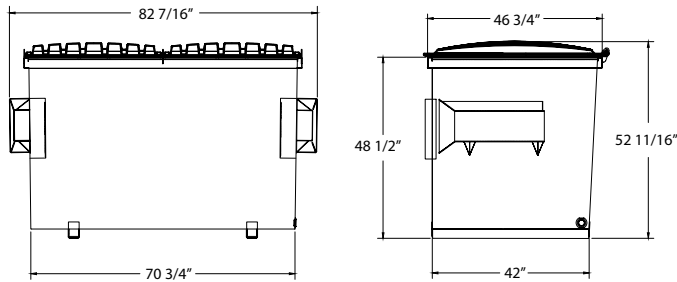
### 2 YARD FLAT NESTABLE



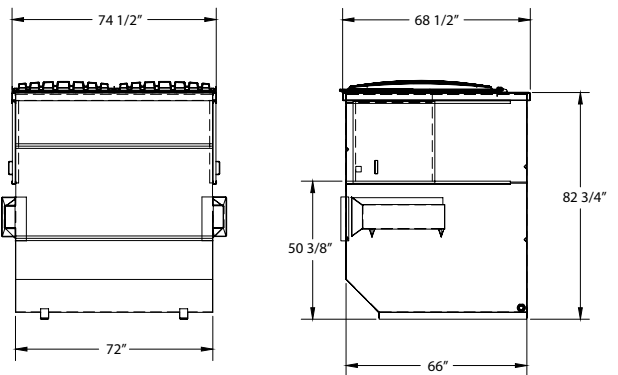
### 6 YARD FLAT



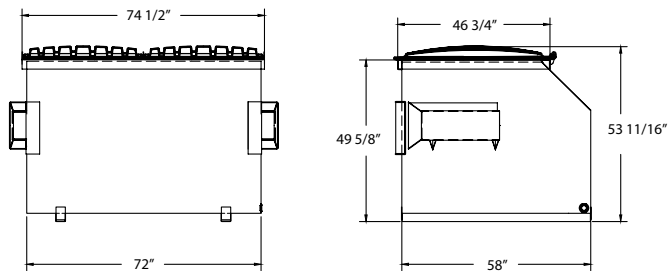
### 3 YARD FLAT NESTABLE



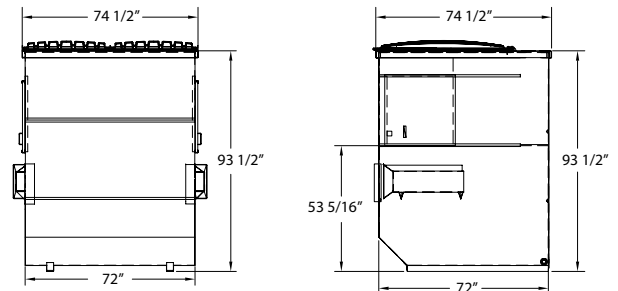
### 8 YARD FLAT



### 4 YARD FLAT



### 10 YARD FLAT



	2 YARD*	3 YARD*	4 YARD	6 YARD	8 YARD	10 YARD
48 ft. trailer flat / drop	42 / 52	28 / 36	18 / 18	8 / 14	8 / 8	7 / 7
53 ft. trailer flat / drop	45 / 57	32 / 42	20 / 20	9 / 16	9 / 9	8 / 8
Plastic lid standard	37" x 41" single wall	37" x 48" single wall	37" x 48" single wall	37" x 58" single wall	37" x 58" single wall	37" x 58" single wall
Sides	12 gauge	12 gauge	12 gauge	12 gauge	12 gauge	12 gauge
Bottom	10 gauge	10 gauge	10 gauge	10 gauge	10 gauge	10 gauge
Weight	505 lbs.	602 lbs.	732 lbs.	971 lbs.	1,110 lbs.	1,543 lbs.

\* Nestable

DATE(MM/DD/YYYY)  
04/03/2018

INSURER(S) AFFORDING COVERAGE		NAI
INSURER A:	The Phoenix Insurance Company	25623
INSURER B:	Travelers Property Cas Co of America	25674
INSURER C:	The Travelers Indemnity Co.	25658
INSURER D:		
INSURER E:		
INSURER F:		

*Non Risk Services South Inc.*

**Certificate No :** 570070734890

The ACORD name and logo are registered marks of ACORD



# ADDITIONAL REMARKS SCHEDULE

Page \_ of \_

AGENCY Aon Risk Services South, Inc.		NAMED INSURED HPCC Parent, Inc. & Subsidiaries
POLICY NUMBER See Certificate Number: 570070734890		EFFECTIVE DATE:
CARRIER See Certificate Number: 570070734890	NAIC CODE	

## ADDITIONAL REMARKS

**THIS ADDITIONAL REMARKS FORM IS A SCHEDULE TO ACORD FORM,**  
**FORM NUMBER:** ACORD 25 **FORM TITLE:** Certificate of Liability Insurance

### Named Insureds

#### CURRENT LEGAL ENTITIES

HPCC Parent, Inc.  
 HPCC Intermediate, Inc.  
 Patriot Container Corp.  
 Patriot Container Intermediate, LLC  
 Patriot Container Acquisition Corp.  
 Wastequip, LLC  
 Toter, LLC  
 Cusco Fabricators, LLC  
 WQD, LLC  
 Parts Place, LLC  
 Wastequip Manufacturing Company LLC  
 Toter International I LLC  
 Toter International II LLC  
 Galbreath LLC

#### PRIOR LEGAL ENTITIES

Wastequip, Inc.  
 Toter, Incorporated  
 Toter, Inc.  
 Cusco Fabricators, Inc.  
 Galbreath, Inc.  
 WQD, Inc.  
 Parts Place, Inc.  
 Wastequip Manufacturing Company Inc.  
 Big Dumpster Acquisitions, Inc.  
 Big Dumpster Holdings, Inc.  
 Accurate Industries, Inc.

#### DBAs

Parts Place  
 Go To Parts  
 Wastequip Manufacturing Company  
 Wastequip Manufacturing  
 Galbreath  
 Accurate Industries  
 Accurate  
 Accurate of Ohio  
 Accurate of Canada  
 Pioneer  
 Mountain Tarp  
 Wastequip Oregon  
 Wastequip Tennessee  
 Wastequip Indiana  
 Wastequip Accurate  
 Wastequip Texas  
 Wastequip May Mfg Co  
 May Manufacturing and Distribution Corp.  
 Wastequip DBA Florida Can  
 May Manufacturing  
 May Fabrication  
 May Fabricators  
 May-Fab  
 Mayfab  
 Mayfab-Waste Equipment  
 Wastequip/Mayfab  
 May Properties  
 Holt  
 Holt Industries  
 Holt Specialty Equipment  
 Wastequip Mfg Co DBA Industrial Refuse Sales



**Form W-9**  
(Rev. November 2017)  
Department of the Treasury  
Internal Revenue Service

## Request for Taxpayer Identification Number and Certification

► Go to [www.irs.gov/FormW9](http://www.irs.gov/FormW9) for instructions and the latest information.

Give Form to the  
requester. Do not  
send to the IRS.

Print or type.  
See Specific Instructions on page 3.

<b>1</b> Name (as shown on your income tax return). Name is required on this line; do not leave this line blank. <u>Wastequip Manufacturing Company, LLC</u>	
<b>2</b> Business name/disregarded entity name, if different from above _____	
<b>3</b> Check appropriate box for federal tax classification of the person whose name is entered on line 1. Check only <b>one</b> of the following seven boxes.  <input type="checkbox"/> Individual/sole proprietor or single-member LLC <input type="checkbox"/> C Corporation <input type="checkbox"/> S Corporation <input type="checkbox"/> Partnership <input type="checkbox"/> Trust/estate  <input checked="" type="checkbox"/> Limited liability company. Enter the tax classification (C=C corporation, S=S corporation, P=Partnership) ► <u>C</u> <small><b>Note:</b> Check the appropriate box in the line above for the tax classification of the single-member owner. Do not check LLC if the LLC is classified as a single-member LLC that is disregarded from the owner unless the owner of the LLC is another LLC that is not disregarded from the owner for U.S. federal tax purposes. Otherwise, a single-member LLC that is disregarded from the owner should check the appropriate box for the tax classification of its owner.</small>  <input type="checkbox"/> Other (see instructions) ► _____	<b>4</b> Exemptions (codes apply only to certain entities, not individuals; see instructions on page 3):  Exempt payee code (if any) _____  Exemption from FATCA reporting code (if any) _____ <small>(Applies to accounts maintained outside the U.S.)</small>
<b>5</b> Address (number, street, and apt. or suite no.) See instructions. <u>(Corporate Location) 6525 Morrison Blvd, Suite 300</u>	Requester's name and address (optional) _____
<b>6</b> City, state, and ZIP code <u>Charlotte, NC 28211</u>	
<b>7</b> List account number(s) here (optional) _____	

### Part I Taxpayer Identification Number (TIN)

Enter your TIN in the appropriate box. The TIN provided must match the name given on line 1 to avoid backup withholding. For individuals, this is generally your social security number (SSN). However, for a resident alien, sole proprietor, or disregarded entity, see the instructions for Part I, later. For other entities, it is your employer identification number (EIN). If you do not have a number, see *How to get a TIN*, later.

**Note:** If the account is in more than one name, see the instructions for line 1. Also see *What Name and Number To Give the Requester* for guidelines on whose number to enter.

<b>Social security number</b>									
or									
<b>Employer identification number</b>									
2	2	-	3	1	9	1	6	2	4

### Part II Certification

Under penalties of perjury, I certify that:

- The number shown on this form is my correct taxpayer identification number (or I am waiting for a number to be issued to me); and
- I am not subject to backup withholding because: (a) I am exempt from backup withholding, or (b) I have not been notified by the Internal Revenue Service (IRS) that I am subject to backup withholding as a result of a failure to report all interest or dividends, or (c) the IRS has notified me that I am no longer subject to backup withholding; and
- I am a U.S. citizen or other U.S. person (defined below); and
- The FATCA code(s) entered on this form (if any) indicating that I am exempt from FATCA reporting is correct.

**Certification instructions.** You must cross out item 2 above if you have been notified by the IRS that you are currently subject to backup withholding because you have failed to report all interest and dividends on your tax return. For real estate transactions, item 2 does not apply. For mortgage interest paid, acquisition or abandonment of secured property, cancellation of debt, contributions to an individual retirement arrangement (IRA), and generally, payments other than interest and dividends, you are not required to sign the certification, but you must provide your correct TIN. See the instructions for Part II, later.

<b>Sign Here</b>	Signature of U.S. person ►	Larry Harvey, VP-Finance Date ► 11/29/2018
------------------	----------------------------	--

### General Instructions

Section references are to the Internal Revenue Code unless otherwise noted.

**Future developments.** For the latest information about developments related to Form W-9 and its instructions, such as legislation enacted after they were published, go to [www.irs.gov/FormW9](http://www.irs.gov/FormW9).

### Purpose of Form

An individual or entity (Form W-9 requester) who is required to file an information return with the IRS must obtain your correct taxpayer identification number (TIN) which may be your social security number (SSN), individual taxpayer identification number (ITIN), adoption taxpayer identification number (ATIN), or employer identification number (EIN), to report on an information return the amount paid to you, or other amount reportable on an information return. Examples of information returns include, but are not limited to, the following.

- Form 1099-INT (interest earned or paid)

- Form 1099-DIV (dividends, including those from stocks or mutual funds)
- Form 1099-MISC (various types of income, prizes, awards, or gross proceeds)
- Form 1099-B (stock or mutual fund sales and certain other transactions by brokers)
- Form 1099-S (proceeds from real estate transactions)
- Form 1099-K (merchant card and third party network transactions)
- Form 1098 (home mortgage interest), 1098-E (student loan interest), 1098-T (tuition)
- Form 1099-C (canceled debt)
- Form 1099-A (acquisition or abandonment of secured property)

Use Form W-9 only if you are a U.S. person (including a resident alien), to provide your correct TIN.

If you do not return Form W-9 to the requester with a TIN, you might be subject to backup withholding. See What is backup withholding, later.

Form

**W-9**(Rev. November 2017)  
Department of the Treasury  
Internal Revenue Service**Request for Taxpayer  
Identification Number and Certification**► Go to [www.irs.gov/FormW9](http://www.irs.gov/FormW9) for instructions and the latest information.**Give Form to the  
requester. Do not  
send to the IRS.**Print or type.  
See Specific Instructions on page 3.

1 Name (as shown on your income tax return). Name is required on this line; do not leave this line blank.

Wastequip Manufacturing Company, LLC

2 Business name/disregarded entity name, if different from above

3 Check appropriate box for federal tax classification of the person whose name is entered on line 1. Check only **one** of the following seven boxes.☐ Individual/sole proprietor or single-member LLC☐ C Corporation☐ S Corporation☐ Partnership☐ Trust/estate☒ Limited liability company. Enter the tax classification (C=C corporation, S=S corporation, P=Partnership) ► C**Note:** Check the appropriate box in the line above for the tax classification of the single-member owner. Do not check LLC if the LLC is classified as a single-member LLC that is disregarded from the owner unless the owner of the LLC is another LLC that is not disregarded from the owner for U.S. federal tax purposes. Otherwise, a single-member LLC that is disregarded from the owner should check the appropriate box for the tax classification of its owner.☐ Other (see instructions) ►

4 Exemptions (codes apply only to certain entities, not individuals; see instructions on page 3):

Exempt payee code (if any) \_\_\_\_\_

Exemption from FATCA reporting code (if any) \_\_\_\_\_

(Applies to accounts maintained outside the U.S.)

5 Address (number, street, and apt. or suite no.) See instructions.

(Corporate Location) 6525 Morrison Blvd, Suite 300

6 City, state, and ZIP code

Charlotte, NC 28211

7 List account number(s) here (optional)

Requester's name and address (optional)

**Part I Taxpayer Identification Number (TIN)**

Enter your TIN in the appropriate box. The TIN provided must match the name given on line 1 to avoid backup withholding. For individuals, this is generally your social security number (SSN). However, for a resident alien, sole proprietor, or disregarded entity, see the instructions for Part I, later. For other entities, it is your employer identification number (EIN). If you do not have a number, see *How to get a TIN*, later.

**Note:** If the account is in more than one name, see the instructions for line 1. Also see *What Name and Number To Give the Requester* for guidelines on whose number to enter.

Social security number

				-							
--	--	--	--	---	--	--	--	--	--	--	--

or

Employer identification number

2	2	-	3	1	9	1	6	2	4
---	---	---	---	---	---	---	---	---	---

**Part II Certification**

Under penalties of perjury, I certify that:

- The number shown on this form is my correct taxpayer identification number (or I am waiting for a number to be issued to me); and
- I am not subject to backup withholding because: (a) I am exempt from backup withholding, or (b) I have not been notified by the Internal Revenue Service (IRS) that I am subject to backup withholding as a result of a failure to report all interest or dividends, or (c) the IRS has notified me that I am no longer subject to backup withholding; and
- I am a U.S. citizen or other U.S. person (defined below); and
- The FATCA code(s) entered on this form (if any) indicating that I am exempt from FATCA reporting is correct.

**Certification instructions.** You must cross out item 2 above if you have been notified by the IRS that you are currently subject to backup withholding because you have failed to report all interest and dividends on your tax return. For real estate transactions, item 2 does not apply. For mortgage interest paid, acquisition or abandonment of secured property, cancellation of debt, contributions to an individual retirement arrangement (IRA), and generally, payments other than interest and dividends, you are not required to sign the certification, but you must provide your correct TIN. See the instructions for Part II, later.

**Sign  
Here**Signature of  
U.S. person ►Larry Harvey, VP-Finance Date ► 11/29/2018**General Instructions**

Section references are to the Internal Revenue Code unless otherwise noted.

**Future developments.** For the latest information about developments related to Form W-9 and its instructions, such as legislation enacted after they were published, go to [www.irs.gov/FormW9](http://www.irs.gov/FormW9).

**Purpose of Form**

An individual or entity (Form W-9 requester) who is required to file an information return with the IRS must obtain your correct taxpayer identification number (TIN) which may be your social security number (SSN), individual taxpayer identification number (ITIN), adoption taxpayer identification number (ATIN), or employer identification number (EIN), to report on an information return the amount paid to you, or other amount reportable on an information return. Examples of information returns include, but are not limited to, the following.

- Form 1099-INT (interest earned or paid)

- Form 1099-DIV (dividends, including those from stocks or mutual funds)
- Form 1099-MISC (various types of income, prizes, awards, or gross proceeds)
- Form 1099-B (stock or mutual fund sales and certain other transactions by brokers)
- Form 1099-S (proceeds from real estate transactions)
- Form 1099-K (merchant card and third party network transactions)
- Form 1098 (home mortgage interest), 1098-E (student loan interest), 1098-T (tuition)
- Form 1099-C (canceled debt)
- Form 1099-A (acquisition or abandonment of secured property)

Use Form W-9 only if you are a U.S. person (including a resident alien), to provide your correct TIN.

If you do not return Form W-9 to the requester with a TIN, you might be subject to backup withholding. See What is backup withholding, later.