

DATE: 3/14/2019

INVITATION TO BID
THIS IS NOT AN ORDER

Page: 4

BID NO.: 50-00125950

JEFFERSON PARISH

PURCHASING DEPARTMENT
P.O. BOX 9
GRETN, LA. 70054-0009
504-364-2678

VENDOR: BASIC SUPPLY, LLC

BUYER: MBUTTERY

As per LSA-RS 47:301 et seq., all governmental bodies are excluded from payment of sales taxes to any Louisiana taxing body. Quotations shall be based on F.O.B. Agency warehouse or jobsite, anywhere within the Parish as designated by the Purchasing Department.

JEFFERSON PARISH reserves the right to cancel all or any part of an order if not shipped promptly. No charges will be allowed for parking or cartage unless specified in quotation. The order must not be filled at a higher price than quoted. JEFFERSON PARISH reserves the right to cancel at any time and for any reason by issuing a THIRTY (30) day written notice to the contractor.

JEFFERSON PARISH is expecting all products to be new and all work to be done in workman-like manner, according to standard practices. Any deviations or alteration from the specifications must be indicated on the bid form for each item and upon request, product data for same must be submitted by the time specified by the Purchasing Department.

DELIVERY: FOB JEFFERSON PARISH

INDICATE DELIVERY DATE ON EQUIPMENT AND SUPPLIES

2-3 WEEKS

INDICATE STARTING TIME (IN DAYS) FOR CONSTRUCTION WORK

INDICATE COMPLETION TIME (IN DAYS) FOR CONSTRUCTION WORK

In the event that addenda are issued with this bid, bidders MUST acknowledge all addenda on the bid form. Bidder must acknowledge receipt of an addendum on the bid form as indicated. Failure to acknowledge any addendum on the bid form will result in bid rejection.

Acknowledge Receipt of Addenda: NUMBER: _____

NUMBER: _____

NUMBER: _____

NUMBER: _____

LOUISIANA CONTRACTOR'S LICENSE NO.: (if applicable) _____

| | |
|--|----------------------|
| *** ALL BIDDERS MUST COMPLETE SECTION BELOW *** | |
| FIRM NAME: BASIC SUPPLY, LLC | |
| SIGNATURE: (Must be signed here) | TITLE: MANAGER |
| PRINT OR TYPE NAME: JOHN ATKINSON | |
| ADDRESS: PO BOX 63066 | |
| CITY, STATE: LAFAYETTE, LA | ZIP: 70596 |
| TELEPHONE: () 337-769-0122 | FAX: (337) 247-7699 |
| EMAIL ADDRESS: charlotte@basicsupply.com | |

TOTAL PRICE OF ALL BID ITEMS: \$ 13574.00

INVITATION TO BID FROM JEFFERSON PARISH - continued

BID NO.: 50-00125950

SEALED BID

| ITEM NUMBER | QUANTITY | U/M | DESCRIPTION OF ARTICLES | UNIT PRICE QUOTED | TOTALS |
|----------------|----------|-----|--|----------------------|---------|
| | | | PURCHASE OF ELECTRICAL STOCK ITEMS FOR THE EAST BANK SEWERAGE WAREHOUSE | | |
| 1 | 1.00 | EA | 0001 - Breaker, circuit, 125 amps, 600 volt, 3 pole, with lugs, new in factory box, Square D No. KAL-36125-WL (must replace existing units without modification) (0841140) | 2200.0 0 | 2200.00 |
| 2 | 12.00 | EA | 0002 - Breaker, circuit, 100 amperes, 600 volt, 3 pole, with lugs, new in factory box, no substitute, Westinghouse No. HMCP100R3 (0841820) | 425.00 | 5100 |
| 3 | 2.00 | EA | 0003 - Contact kit, size 4, Westinghouse, Hoyt no. K125 (0853330) | NO BID | NO BID |
| 4 | 1.00 | EA | 0004 - Kit, contact Wesinghouse no. 2147A42G01 (0853360) | 1200.00 | 1200.00 |
| 5 | 12.00 | EA | 0005 - Kit, contact, auxillary, Siemens no. 49AB10, for size 3, 3 pole starter (0853420) | 19.00 | 228.00 |
| 6 | 40.00 | EA | 0006 - Contact block, IDEC no. BST-010, normally open, for IDEC no. ASD320N switch (0853490) | NO BID | NO BID |
| 7 | 500.00 | LF | 0007 - Wire, electrical, single copper conductor, THHN/THWN PVC insulation, 600V, stranded, 500 ft per spool, No. 16, red (0882861) | NO BID | NO BID |
| 8 | 50.00 | EA | 0008 - Fixture, LED, wall pack, outdoor general purpose, 2000 lumens, recommended mounting height 10 to 15 feet, Acuity Lithonia Lighting no. TWR1 led 1 50K mvolt, Grainger no. 21YH27 (0881210) | 84.00 | 4200.00 |
| | | | 10137 | | |

INVITATION TO BID FROM JEFFERSON PARISH - continued

BID NO.: 50-00125950

SEALED BID

| ITEM NUMBER | QUANTITY | U/M | DESCRIPTION OF ARTICLES | UNIT PRICE QUOTED | TOTALS |
|----------------|----------|-----|--|----------------------|--------|
| 9 | 5.00 | EA | 0009 - Globe, clear glass, 100 watt size, for use with Killark V series fixtures, Hubbell No. VCG-100 (0880710) | NO BID | NO BID |
| 10 | 6.00 | EA | 0010 - Fixture body, Hubbell no. VFC-100 (880700) | NO BID | NO BID |
| 11 | 10.00 | EA | 0011 - Connector, liquid tight, 90 degree, 3/4 in, malleable iron, nylon insulated, for flexible metal conduit, Appleton No. STB-90075 (087722C) | NO BID | NO BID |
| 12 | 20.00 | EA | 0012 - Seal, conduit knock out, 1 in, weatherproof, Hoffman No. AS100 (0874270) | NO BID | NO BID |
| 13 | 2.00 | EA | 0013 - Plug adaptor twistlok 3 wire receptacle (0883510) | NO BID | NO BID |
| 14 | 2.00 | EA | 0014 - Contact kit, size 4, Westinghouse no. 626B187G17 (0853350) | 323.00 | 646.00 |
| 15 | 400.00 | EA | 0015 - Connector, female, sta-con, 16-14 wire range, insulated, T and B 14RB250F (0870380) | NO BID | NO BID |
| 16 | 2.00 | EA | 0016 - Condulet, aluminum (cast), type LB, 1-1/4 inch, form 85 threaded, with cover and gasket, and stainless steel screw Appleton No. LB125-A (0876350) | NO BID | NO BID |
| 17 | 1,000.00 | FT | 0017 - Wire, electrical, single copper conductor, THHN/THWN PVC insulation, 600V, stranded, 500 ft per spool, No. 16, white (088286J) Please have items shipped to: | NO BID | NO BID |

DATE: 3/14/2019

Page: 7

INVITATION TO BID FROM JEFFERSON PARISH - continued

BID NO.: 50-00125950

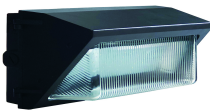
SEALED BID

| ITEM NUMBER | QUANTITY | U/M | DESCRIPTION OF ARTICLES | UNIT PRICE QUOTED | TOTALS |
|----------------|----------|-----|--|----------------------|--------|
| 18 | .00 | | Eastbank Warehouse Attention: Curtis McFarland 4901 Jefferson Hwy Suite C Jefferson, LA 70121 | | |



Search > Results for 10137 > WP1/CL40UBZ50 10137 LED WALLPACK SEMI-CUTOFF; 40W, 120-277V, 5000K, BRONZE

[Print](#)



WP1/CL40UBZ50 10137
LED WALLPACK SEMI-
CUTOFF; 40W, 120-277V,
5000K, BRONZE

Product Number: 10137
UPC: 807154101375



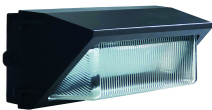
Log In for Price and Availability

| Specifications | Resources | Technical | |
|-------------------------|--|-----------|--|
| ANSI Code 1 | UL1598 | | |
| Applications | 150W MH | | |
| Average Life (Hrs) | 100,000 | | |
| Beam Angle | Type IV Short | | |
| Beam Spread | 104 | | |
| Brand | HALCO | | |
| CRI | 70 | | |
| CSA | Yes | | |
| Color Temperature | 5000K | | |
| DesignLights Consortium | Yes | | |
| Dimmable | Yes | | |
| ENERGY STAR | No | | |
| Equivalent Wattage | 150W MH | | |
| Finish | BRONZE | | |
| HTS code | 9405406000 | | |
| Initial Lumens | 4475 | | |
| Input Current (Amps) | 0.4 | | |
| Input Frequency (Hz) | 50/60 | | |
| Markets | Commercial & Industrial | | |
| Master Carton Quantity | 4 | | |
| Prod Code | WP1/CL40UBZ50 | | |
| Product Category | LED FIXTURES | | |
| Product Description | LED WALLPACK SEMI-CUTOFF; 40W, 120-277V, 5000K, BRON | | |
| Product Number | 10137 | | |
| SS BUY PKG | 20 | | |
| Voltage (V) | 120-277 | | |
| Warranty (Yrs) | 5 | | |
| Wattage (W) | 40 | | |
| XREF Installation Sheet | | | |



Search > Results for 10137 > WP1/CL40UBZ50 10137 LED WALLPACK SEMI-CUTOFF; 40W, 120-277V, 5000K, BRONZE

Print



WP1/CL40UBZ50 10137
LED WALLPACK SEMI-
CUTOFF; 40W, 120-277V,
5000K, BRONZE

Product Number: 10137
UPC: 807154101375



Log In for Price and Availability

| Specifications | Resources | Technical | |
|----------------------------------|-----------|---|--|
| Base Material | | Die-casting aluminum | |
| ETL | | No | |
| Footnotes 1 | | This luminaire is intended for use on Class 2 circuits only. Use circuits with output ranges identified in specifications. Lumina using analog dimmers and magnetic transformers. May not be dimmers and/or transformers and should be tested in applicat prior to full installations on circuits using such devices. | |
| Footnotes 2 | | ?Caution: Risk of electric shock. Never disassemble or modify serviceable parts inside. To avoid burns, do not touch the LED allow to cool completely after switching off. This device is not emergency exit fixtures. This device complies with Part 18 of t product may cause interference with other devices. If interfer the location of the products involved. | |
| Footnotes 3 | | Dimmable | |
| Footnotes 4 | | IP65 Rated This luminaire is rated for use outdoor use where water from rain or irrigation. | |
| Footnotes 5 | | Luminaire is UL Listed for Wet Locations. | |
| Footnotes 6 | | Rated for Outdoor use only. | |
| IP Rating | | IP65 | |
| Maximum Ambient Temperature (C) | | 50C | |
| Maximum Case Temperature (C) | | 50C | |
| Minimum Starting Temperature (C) | | -40C-50C | |
| NEMA Premium | | No | |
| Power Factor | | 0.9 | |
| Prod Code | | WP1/CL40UBZ50 | |
| RoHS Compliant | | Yes | |
| SS BUY PKG | | 20 | |
| TCLP Compliant | | No | |
| UL | | Yes | |
| UNSPSC | | 39112102 | |
| UPC Code | | 807154101375 | |
| Warning 1 | | THIS PRODUCT MUST BE INSTALLED IN ACCORDANCE W APPLICABLEINSTALLATION CODE BY A PERSON FAMILIAR CONSTRUCTION ANDOPERATION OF THE PRODUCT ANC INVOLVED | |
| Warning 2 | | SUITABLE FOR WET LOCATIONS | |
| Warning 3 | | CAUTION ? RISK OF SHOCK | |
| Warning 4 | | All components in the luminaire shall not be replaced orservic | |
| Warning 5 | | Class 1 wiring | |
| Warning 6 | | WALL MOUNT ONLY | |
| Weight (lbs) | | 6.66 | |
| XREF Installation Sheet | | | |
| cETL | | No | |
| cUL | | Yes | |