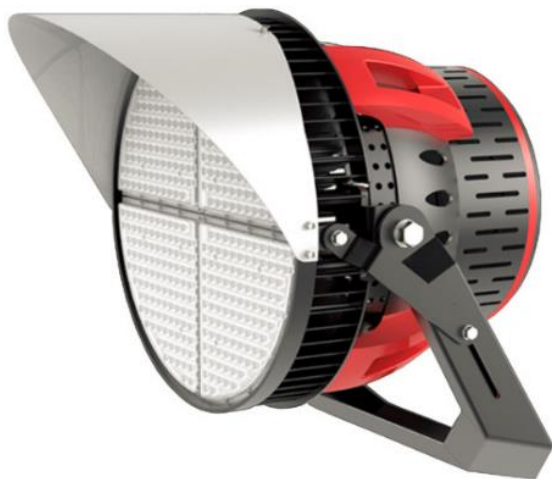
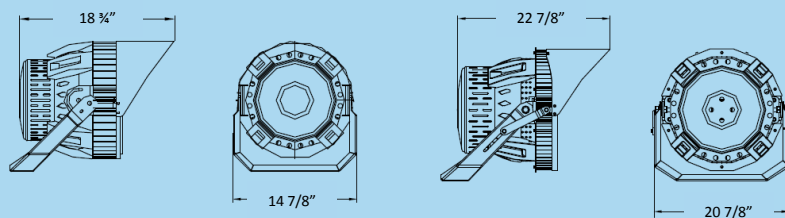


- High Performance / High Efficiency
- Meanwell LED drivers.
- Effective Internal Thermal Control
- Up to 50,000 hours.
- Wireless Remote Monitoring and Control.
- 100-277 or 240-480 VAC voltage
- IP66 Rated.
- Adjustable Mounting Angle
- Up to 65,000 lumen output on 500w
- Up to 156,000 lumen output on 1,200w

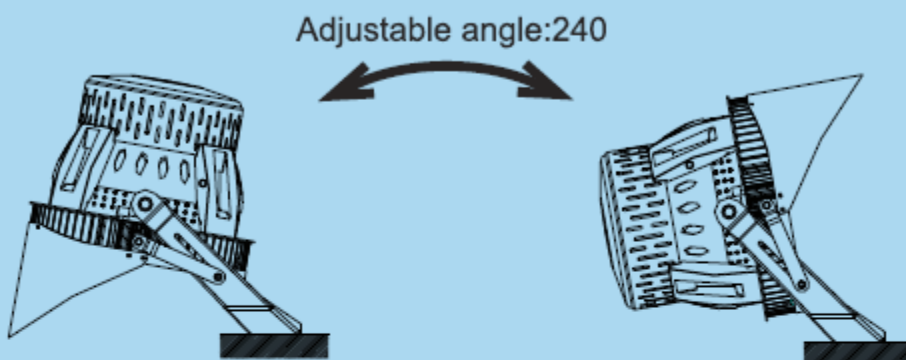


Model	HD-SP300WVCT-AXX	HD-SP400WVCT-AXX	HD-SP500WVTC-AXX	HD-SP600WVCT-AXX	HD-SP750WVCT-AXX	HD-SP1000WVCT-AXX	HC-SP1200WVCT-AXX
Lumen Output	39000Lm	52000Lm	65000Lm	78000Lm	97500Lm	130000Lm	156000Lm
CCT	3000K/4000K/5000K/5700K/6500K						
CRI	70Ra						
Light source	Osram,Cree						
System Watts	300W	400W	500W	600W	750W	1000W	1200W
Dimensions(mm)	3 2 1/4" x 8 3/8"	3 2 1/4" x 8 3/8" 20 7/8" x 22 7/8" (Optional)	3 2 1/4" x 8 3/8" 20 7/8" x 22 7/8" (Optional)	20 7/8" x 22 7/8"	20 7/8" x 22 7/8"	20 7/8" x 22 7/8"	20 7/8" x 22 7/8"
Input Voltage	100-277V/240-480V						
Power Factor	0.95						
THD	<15%						
Input Protectin	10KV Current Surge						
Driver	Meanwell						
Operating Temp Range	-40 ° to 55 °						
IP Rating	Ip66						
Dimming control (Optional)	1-10V.DMX .DALL						
light Distribution Options	15° / 25° / 40° / 60°						
Cetification	ETL\ENEC\CE\DLC\SAA						

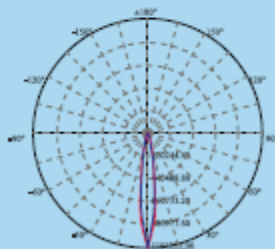
### DIMENSION:



### INSTALLATION:



### PHOTOMETRIC DIAGRAMS:



NEMA 2		
Height	Mac FC	Beam Diameter
40 ft	721	20 ft
80 ft	180	41 ft
120 ft	80	61 ft
160 ft	46	82 ft
200 ft	30	102 ft
Beam Angle = 14.9, Field Angle = 32		

NEMA 5		
Height	Mac FC	Beam Diameter
40 ft	91	67 ft
80 ft	21	134 ft
120 ft	9	201 ft
160 ft	6	268 ft
200 ft	4	336 ft
Beam Angle = 40, Field Angle = 80		