



CENTRALBIDDING
FROM CENTRAL AUCTION HOUSE

**5000148141 ONE (1) YEAR CONTRACT TO PROVIDE MATERIAL FOR
JEFFERSON PARISH DEPARTMENT OF DRAINAGE**
Jefferson Parish Government

Project documents obtained from www.CentralBidding.com
11-Jun-2025 09:29:43 AM



Bid Number 50-00148141

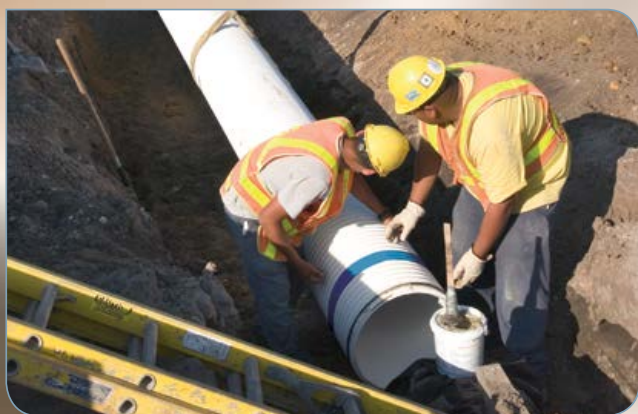
**ONE (1) YEAR CONTRACT TO PROVIDE MATERIAL FOR JEFFERSON
PARISH DEPARTMENT OF DRAINAGE**

BID DUE: June 11,2025 AT 11:00 AM

ATTENTION VENDORS!!!

Please review all pages and respond accordingly, complying with all provisions in the technical specifications and Jefferson Parish Instructions for Bidders and General Terms and Conditions. All bids must be received on the Purchasing Department's eProcurement site, www.jeffparishbids.net , by the bid due date and time. Late bids will not be accepted.

**Jefferson Parish Purchasing Department
200 Derbigny Street
General Government Building, Suite 4400
Gretna, LA 70053
Purchasing Specialist: Stacey Champagne
Email: stacey.champagne@jeffparish.gov
Phone: 504-364-2688**



A-2000™ PVC Pipe for Storm Sewers and Drainage

A-2000™ Drainage Pipe

Drainage systems are required to meet multiple criteria. The choice of a particular material depends upon a number of factors; however, the best choice is the one that yields the best performance over the project life cycle.

Thermoplastic Storm Sewer and Drainage Pipe

In recent years, the use of thermoplastic pipe for stormwater drainage systems has gained wide acceptance—based upon performance and economic advantages when contrasted with more conventional drainage pipe materials.

However, when it comes to performance, not all thermoplastic storm sewer pipes are equal. There are distinct differences between A-2000 Polyvinyl Chloride (PVC) drainage pipe and other drainage pipes that can affect overall pipe system performance.

Contech® A-2000 PVC Drainage Pipe:
Available in Diameters 4"-36"
and 14' or 22' lengths.

Originally developed in the early 1980's, A-2000 has built an outstanding performance history that's setting the standard for gravity flow, sanitary sewer applications. The material advantages offered by PVC—plus the innovative, double wall design with the unique, patented gasketed joint system—makes A-2000 the ideal choice for stormwater drainage systems. Now you can have all of the advantages without the limitations of HDPE or reinforced concrete pipe.



Compact A-2000 PVC profile is stable and not subject to local buckling like HDPE.

Strength

A-2000's PVC compound provides **6 times** greater long-term material stiffness as compared to HDPE drainage pipe materials. And A-2000 pipe, **UNLIKE** HDPE drainage pipe, has a minimum 46 pipe stiffness for **ALL** diameters.

Minimum Specified Pipe Stiffness (73⁰)*

Pipe Diameter	PVC ASTM F949	HDPE AASHTO M294
12	46	50
15	46	42
18	46	40
24	46	34
30	46	28
36	46	22

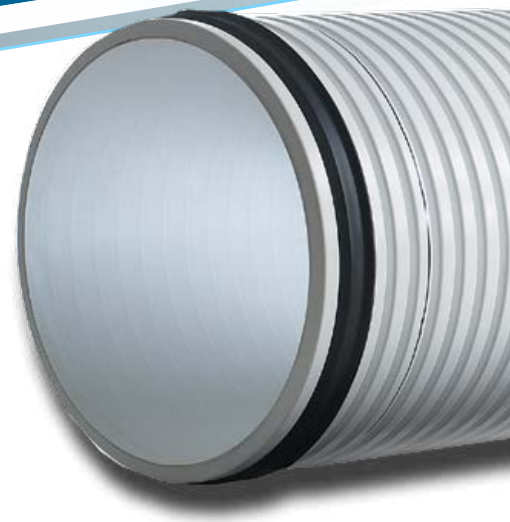
*Actual A-2000 pipe stiffness values are 50 psi

Better deflection control

When compared to other thermoplastic pipes on the market, A-2000 stands up to the test. In fact, it comes out on top.

When installed in accordance with ASTM D2321, A-2000 provides excellent shape control (performance).

The difference between effective pipe stiffness of A-2000 and HDPE drainage pipe during construction on a summer day can result in A-2000 being as much as **3 TIMES STIFFER**. This significant stiffness advantage, combined with PVC's lower strain sensitivity and temperature sensitivity, means A-2000 can be installed with conventional flexible pipe practice and not experience excessive shape distortions.





Heights of Cover

A-2000 PVC pipe can be used with 1 foot of cover under highway loading. Current AASHTO LRFD Design Methodology has required all thermoplastic pipes to have a minimum height of cover of 2 feet under pavement. This requirement was derived from a Minnesota DOT Research Report (2005) that studied HDPE pipe performance under highway loading. The report indicates significant thermal expansion of HDPE pipe under shallow fills. PVC pipe was not incorporated in this study, and it should be noted that HDPE experiences four times more thermal expansion than PVC.

When selecting a system based on pipe stiffness, material strength and structural capability, A-2000 PVC far exceeds the performance characteristics of HDPE drainage pipe.



A comparison of cover heights using AASHTO design methodology and H20 live loading for A-2000 and a major manufacturer’s M294 HDPE pipe are summarized below.

A-2000 vs. M294 HDPE (AASHTO Heights of Cover)

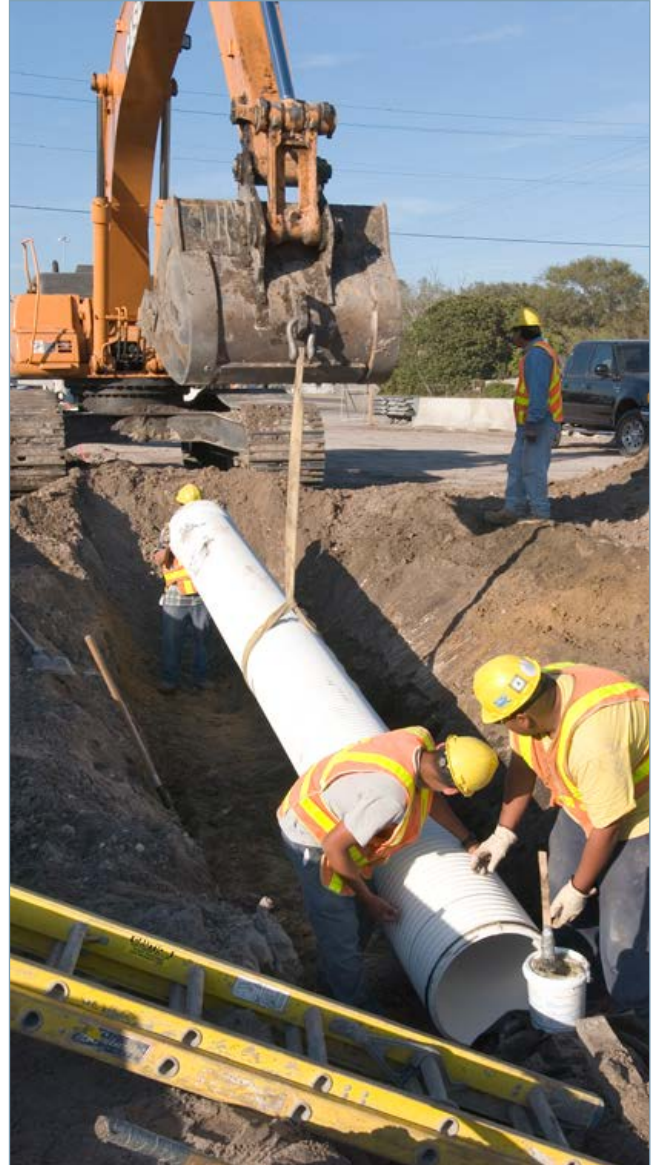
Pipe Type/Specification	Allowable Height of Cover	Allowable Structural Backfill	Min. Compaction	Min. Trench
PVC A-2000 - ASTM F949	2'-20'	A-1-a, A-1-b, A-3 A-2-4, A-2-5	90%	1.5 X O.D. + 12"
	21'-35'	A-1-a, A-1-b, A-3	95%	1.5 X O.D. + 12"
Corrugated HDPE - AASHTO M294	2'-10'	A1-a, A1-b, A-3	95%	O.D. + 36"
	11'-20'	A-1-a	95%	3.0 x O.D.
	21'-35'	Not Allowed		

Durability, Service Life

PVC materials used in the manufacture of gravity flow pipe offer excellent resistance to conventional corrosion and abrasion. In fact, profile wall PVC pipe has been shown to have better abrasion resistance than reinforced concrete pipe in side-by-side laboratory testing at California State University.

PVC and HDPE do **not** provide equal long-term durability performance. Under loading or localized tensile stress, some grades of HDPE are subject to environmental stress cracking—also known as slow crack growth. Exhibited as premature rupture, this phenomenon can occur when stressed HDPE plastics are attacked by a reagent (even storm runoff) that causes cracking or rupture at stress levels well below design performance expectations.

PVC pipe is not threatened by this type of cracking. When you consider durability and service life, A-2000 PVC far exceeds the performance characteristics of HDPE drainage pipe. (See the National Cooperative Highway Research Program study conducted by Drexel University, March, 1999: "HDPE Pipe: Recommended Material Specifications and Design Requirements".)



Contech A-2000 PVC far exceeds the durability and service life of HDPE drainage pipe.

Hydraulic Efficiency

A-2000 vs. Concrete Pipe

Thermoplastic pipes, with smoother interiors and fewer joints, reduce resistance to flow and are hydraulically more efficient than conventional (i.e., RCP) storm drainage pipe materials. Flow testing conducted in 2002 by the Utah Water Research Laboratory concluded

A-2000 PVC Pipe, with its inner wall formed over a polished mandrel, has the lowest wall friction factor (Manning's "n" = .009) of any thermoplastic pipe available and offers real advantages compared to RCP (n = .012- .013). This added efficiency means A-2000 can be designed as a smaller and less expensive pipe, with less excavation due to flatter pipe slopes and less manhole/junction box depth requirements.

A-2000 vs. HDPE Pipe

Hydraulic tests performed at a major United States Water Research Laboratory led researchers to conclude that HDPE drainage pipe's "n" factor varied "depending upon the smoothness of the liners" and "the bonding of the liner to the corrugations made the pipe interior somewhat wavy." Once installed, HDPE pipe walls are subject to local buckling (NCHRP Report 438) and the measured waviness increases with load. Using the method derived to estimate the effective Manning's "n" factor, Manning's "n" values of 0.017-0.022 provide a more accurate representation of HDPE's hydraulic efficiency when in-service and under load.

A-2000 PVC pipe, with its engineered, stable profile, is designed to **NOT** buckle.

When you're selecting a system based on hydraulic efficiency, A-2000 PVC pipe far exceeds the performance limitations of HDPE and RCP drainage pipe.



A-2000 PVC has a smooth, glossy interior for uninterrupted flow.



Best Pipe on the Planet

The Need for Tight Joints

Storm sewers have always presented special needs for tight jointing systems. Because of their function, they are subject to rapidly changing flow levels. The sudden rise and fall of flow levels leaves storm sewers susceptible to backfill migration into the sewer unless tight joints are used. This loss of backfill reduces the soil support of the pipe and causes settlement at the surface. Where storm sewers are below the existing water table, water tight joints are needed to prevent infiltration and maintain storm sewer capacity.

A-2000's long, 22-foot lengths and soil/water tight joints clearly make it the preferred choice with regard to system tightness. In comparison, RCP has many joints—increasing the opportunity for soil infiltration and settlement. And with A-2000 you don't have to specify special jointing requirements. Watertight gasketed joints are standard with A-2000.



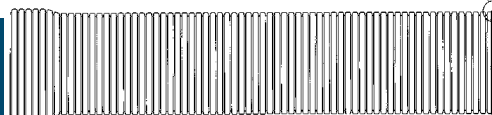
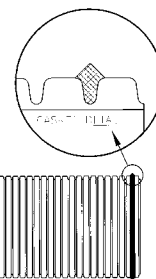
A-2000 is lightweight & easy to handle.

Handling and Installation

A-2000's easy handling weight and the availability of up to 22-foot lay lengths often result in reduced labor costs and more economical installation. Compared to heavy-weight and short-length RCP, A-2000 can be installed with greater ease and lower cost. And contrasted to HDPE, A-2000 has added beam strength—which means better line and grade control, increasing crew efficiency. Plus, A-2000 requires less trench width, lowering excavation costs and speeding installation.

The Performance Choice

With the increasing demands on our drainage and storm sewer systems, products designed and proven to provide the best performance over the project life cycle are needed. A-2000 PVC drainage pipe offers all of the initial cost advantages associated with thermoplastic pipe when compared with RCP but without the performance limitations of HDPE drainage pipe. There's no reason to compromise on performance—**Select A-2000 PVC: The Best Storm Sewer and Drainage Pipe on the Planet.**



A-2000™ Specifications

Constant Stiffness Thermoplastic Pipe

1.0 PIPE: Polyvinyl Chloride (PVC) storm sewer/drain pipe and fittings shall be manufactured and tested in accordance with ASTM F949.

2.0 MATERIAL AND DESIGN: The structural design of thermoplastic pipes shall be in accordance with AASHTO LRFD titled: "Buried Structures and Tunnel Liners." To ensure long-term design strength properties, PVC pipe shall be manufactured from 12454 cell class material per ASTM D1784. Pipe and fittings shall have a minimum pipe stiffness of 46 lbs./in./in., when tested in accordance with ASTM D2412.

3.0 JOINING SYSTEM: Joints shall be an integral bell-gasketed joint. When the joint is assembled, it shall prevent misalignment of adjacent pipes and form either a soil tight joint (2 psi hydrostatic test per AASHTO Standard Specification for Highway Bridges) or a watertight joint (10.8 psi test per ASTM D3212 titled: "Standard Specification for Joints for Drain and Sewer Plastic Pipes using Flexible Elastomeric Seals") as required.

4.0 HYDRAULICS CAPACITY: The PVC Pipe covered in this section shall provide a Manning's "n" value of .009.

5.0 INSTALLATION: Thermoplastic pipe and fittings shall be installed in accordance with AASHTO Thermoplastic Specifications or ASTM D2321.

Additional Products & Applications

A-2000 for Roof Drainage Systems

Managing large volumes of stormwater runoff from roof areas of industrial, commercial and warehouse facilities is more demanding than for most gravity-fed sewer systems.

- High strength
- Tight Joints
- Unique gasket and bell design

A2™ Liner Pipe for Trenchless Rehabilitation

Utilize A2 Liner for your aging underground infrastructure —the proven, trenchless solution to sliplining existing sewers and culverts. Contech developed A2 Liner Pipe for sliplining deteriorating pipelines where open trenching is not practical or desirable.

- Diameter ranging from 12" - 36"
- Standard lengths ranging from 2.5' to 20'
- Light weight
- Installed cost savings

A-2000 Perforated Pipe for Subdrainage Systems

Contech A-2000 offers several critical features and benefits that make it the performance choice for subsurface drainage systems:

- 46 psi pipe stiffness for structural stability and improved deflection control.
- Glossy smooth interior for improved hydraulic capacity.
- PVC rigidity that provides essential beam strength for improved line and grade control during installation.
- Positive-gasketed jointing system.

Standard perforations for 4"-18" diameters are slots, while perforations for pipe sizes 21"-36" are circular $\frac{3}{8}$ " diameter (.375") holes. Fully perforated A-2000 is also available for even greater open area.



Perforation Dimensions

Pipe Size (in)	Slot Dimension/Hole Size (in) (min)	Centers (in)	Perforation Open Area (in ² /LF)
4	1.062L x 0.031W	0.42	1.90
6	1.375L x 0.031W	0.52	1.98
8	1.750L x 0.031W	0.69	1.90
10	2.187L x 0.031W	8.83	1.98
12	1.687L x 0.051W	1.03	2.00
15	1.250L x 0.051W	1.38	2.00
18	2.250L x 0.051W	1.38	2.00
21	0.375 Diameter	1.60	3.30
24	0.375 Diameter	1.90	2.70
30	0.375 Diameter	2.32	2.20
36	0.375 Diameter	2.61	2.00



Contech® Engineered Solutions provides innovative, cost-effective site solutions to engineers, contractors and developers on projects across North America. Our portfolio includes bridges, drainage, erosion control, retaining wall, sanitary sewer and stormwater management products.



**STORMWATER
SOLUTIONS**



**PIPE
SOLUTIONS**



**STRUCTURE
SOLUTIONS**

FOR MORE INFORMATION CALL:

Corporate Office - Ohio (Cincinnati)	513-645-7000
California (Roseville)	800-548-4667
Colorado (Denver)	720-587-2700
Florida (Orlando)	321-348-3520
Maine (Scarborough)	207-885-9830
Maryland (Baltimore)	410-740-8490
Oregon (Portland)	503-258-3180
Texas (Dallas)	972-590-2000

www.ContechES.com | 800-338-1122

NOTHING IN THIS CATALOG SHOULD BE CONSTRUED AS A WARRANTY. APPLICATIONS SUGGESTED HEREIN ARE DESCRIBED ONLY TO HELP READERS MAKE THEIR OWN EVALUATIONS AND DECISIONS, AND ARE NEITHER GUARANTEES NOR WARRANTIES OF SUITABILITY FOR ANY APPLICATION. CONTECH MAKES NO WARRANTY WHATSOEVER, EXPRESS OR IMPLIED, RELATED TO THE APPLICATIONS, MATERIALS, COATINGS, OR PRODUCTS DISCUSSED HEREIN. ALL IMPLIED WARRANTIES OF MERCHANTABILITY AND ALL IMPLIED WARRANTIES OF FITNESS FOR ANY PARTICULAR PURPOSE ARE DISCLAIMED BY CONTECH. SEE CONTECH'S CONDITIONS OF SALE (AVAILABLE AT WWW.CONTECHES.COM/COS) FOR MORE INFORMATION.

© 2019 Contech Engineered Solutions LLC, a QUIKRETE Company
All rights reserved. Printed in USA.



A2000DrainageBro 3/19 MC DIGITAL

STANDARD INSURANCE REQUIREMENTS FOR BIDDING PURPOSES

All required insurance under this bid shall conform to Jefferson Parish Resolution No. 136353 or No. 141125, as applicable. Contractors may not commence any work under any ensuing contract unless and until all required insurance and associated evidentiary requirements thereto have been met, along with any additional specifications contained in the **Invitation to Bid**. Except as where otherwise precluded by law, the Parish Attorney or her designee, with the concurrence of the Director of Risk Management or her designee, may agree on a case-by-case basis, to deviate from Jefferson Parish's standard insurance requirements, as provided in this Section. **Vendors requesting deviation therefrom shall submit such requests in writing, along with compelling substantiation, to the Purchasing Department prior to the bid's due date.** Any changes to the insurance requirements will be reflected in the bid specifications and addenda. Prior to contract execution and at all times thereafter during the term of such contract, contractors must provide and continuously maintain all coverages as required by the foregoing Resolutions, and the contract documents. Failure to do so shall be grounds for suspension, discontinuation or termination of the contract.

Within ten (10) days of bid opening, the apparent low bidder will be required to provide final insurance certificates to the Parish which shall name the Parish of Jefferson, its Districts Departments and Agencies under the direction of the Parish President and the Parish Council as additional insured on the Commercial General Liability, and the Comprehensive Automobile Liability policies to protect against negligence by the contractor as provided by contract. Failure to provide your certificate of insurance within the ten (10) days, shall result in the Parish rejecting your bid and moving on to the next lowest bidder. Additionally, said certificates should reflect the name of the Parish Department receiving goods and services and reference the respective Jefferson Parish bid number.

JEFFERSON PARISH REQUIRED STANDARD INSURANCE

☒ WORKER'S COMPENSATION INSURANCE

As required by Worker's Compensation Law of the State of the Contractor's headquarters. Employer's Liability is included, with minimum limits of \$500,000 per occurrence, except it shall be \$1,000,000 per occurrence when Work is to be overwater and involves maritime exposures to cover all employees not covered under the State Worker's Compensation Act.

Waiver of Subrogation endorsement in favor of **the Parish of Jefferson, its Districts Departments and Agencies under the direction of the Parish President and the Parish Council.**

Note: If your company is not required by law to carry worker's compensation insurance, i.e. sole employee of the company, then bidders must request a

worker's compensation insurance declaration affidavit prior to the bid opening date. This insurance declaration affidavit must be fully completed, signed, properly notarized within ten (10) days of the bid opening. A scanned copy may be submitted initially; however, the successful bidder must submit the original affidavit in its original format and without material alteration upon contract execution. Failure to comply will result in the bid submission being rejected as non-responsive. The Parish reserves the right to award bid to the next lowest responsive and responsible bidder in this event.

☒ **COMMERCIAL GENERAL LIABILITY**

Commercial General Liability Form CG 00 01, or pre-approved equivalent; Minimal acceptable limits: \$1,000,000 per occurrence; \$1,000,000 personal & advertising injury; \$2,000,000 general aggregate; and \$2,000,000 products/completed operations aggregate.

Waiver of Transfer of Rights of Recovery Against Others endorsement in favor of the Parish of Jefferson, its Districts, Departments, Agencies and Employees under the direction of the Parish President and the Parish Council.

☒ **BUSINESS AUTOMOBILE LIABILITY**

Minimal acceptable limit for bodily injury and property damage liability: \$1,000,000 Combined Single Limit.

Liability coverage to be provided for Any Auto OR for ALL Owned Autos and Hired and Non-owned Autos. **If contractor owns no vehicles, then a Hired and Non-owned Auto Liability policy is required.**

Waiver of Transfer of Rights of Recovery Against Others to Us endorsement in favor of the Parish of Jefferson, its Districts, Departments, Agencies and Employees under the direction of the Parish President and the Parish Council.

Note: This category may be omitted if bidders do not/will not utilize vehicles for the project AS DETERMINED BY Risk Management and Parish Attorney's Office after properly requesting a deviation as discussed above. Bidder must request a deviation prior to bid opening and may be given an automobile insurance declaration affidavit to execute. This insurance declaration affidavit must be fully completed, signed, properly notarized and submitted within ten (10) days of the bid opening. A scanned copy of the completed, signed and properly notarized affidavit may be submitted initially; however, the successful bidder must submit the original affidavit in its original format and without material alteration upon contract execution. Failure to comply will result in the bid submission being rejected as non-responsive. The Parish reserves the right to award bid to the next lowest responsive and responsible bidder in this event.

DEDUCTIBLES - The Parish Attorney with concurrence of the Director of Risk Management have waived the deductible section of the Terms and Conditions for all Invitations to Bid, until further notice.

UMBRELLA LIABILITY COVERAGE - An umbrella policy or excess may be used to meet minimum requirements. If you are purporting to use an umbrella policy or excess to meet minimum requirements, then you must provide the Umbrella Schedule of Underlying Policies with the Certificate of Insurance evidencing which policies the Umbrella sits over.

FOR CONSTRUCTION AND RENOVATION PROJECTS: The following are required if selected below. Such insurance is due upon contract execution.

☐ **OWNER'S PROTECTIVE LIABILITY**

To be for the same limits of liability for bodily injury and property damage liability established for commercial general liability.

☐ **BUILDER'S RISK INSURANCE**

The contractor shall maintain Builder's Risk Insurance at his own expense to insure both the owner (Parish of Jefferson) and contractor as their interest may appear.

DATE: 6/06/2025

INVITATION TO BID
THIS IS NOT AN ORDER

Page: 1

BID NO.: 50-00148141

JEFFERSON PARISH

PURCHASING DEPARTMENT
P.O. BOX 9
GRETN, LA. 70054-0009
504-364-2678

VENDOR: 27118 BLANK BID COPY VENDOR

PURCHASING SPECIALIST: SCHAMPAGNE@jeffparish.net

BIDS WILL BE RECEIVED ONLINE VIA WWW.JEFFPARISHBIDS.NET UNTIL 11:00 AM, 6/11/2025

LATE BIDS WILL NOT BE ACCEPTED

NOTE: ONLY BIDS WRITTEN IN INK OR TYPEWRITTEN, AND PROPERLY SIGNED BY A MEMBER OF THE FIRM OR AUTHORIZED REPRESENTATIVE, WILL BE ACCEPTED. PENCIL AND/OR PHOTOSTATIC FIGURES FOR SIGNATURES SHALL RESULT IN BID REJECTION. HOWEVER, ELECTRONIC SIGNATURES AS DEFINED IN La. R.S. 9:2602(8) ARE ACCEPTABLE. IN ACCORDANCE WITH La. R.S. 9:2602(8), JEFFERSON PARISH REQUIRES A SECURED DIGITAL SIGNATURE AND BIDDERS MUST PROVIDE PROOF OF THE SECURED SIGNATURE WITH BID SUBMISSION.

INSTRUCTIONS FOR BIDDERS AND GENERAL CONDITIONS

- A. All bids submitted are subject to these instructions and general conditions and any special conditions and specifications contained herein, and, in the terms and conditions of Resolution No. 136353, all of which are made part of this bid proposal and ensuing contract by reference. By submitting a bid, vendor agrees to comply with all provisions of Louisiana Law as well be in compliance with the Jefferson Parish Code of Ordinances ("JPCO"), Louisiana Code of Ethics, and applicable Jefferson Parish ethical standards.
- B. The General Conditions for the purchase of materials, services and/or supplies are those adopted by the Jefferson Parish Council by Resolution No. 136353. The General Conditions adopted by these resolutions shall be considered as much a part of this document and the ensuing contract or P.O. as if they were written wholly herein. A copy of these resolutions may be obtained from the Office of the Parish Clerk, Suite 6700, Jefferson Parish General Government Building, 200 Derbigny Street, Gretna, LA 70053. You may also obtain a copy by visiting the Purchasing Department webpage at <http://www.jeffparish.gov/464/Purchasing> and clicking on On-line forms.
- C. Jefferson Parish adheres to the Louisiana Code of Governmental Ethics, contained in La. R.S. 42:1101, et seq. Vendor/Proposer by this submission, warrants that there are no "conflicts of interest" related to this procurement that would violate applicable Louisiana Law. Violation of the Louisiana Code of Governmental Ethics may result in rescission of contract, permit or licenses, and the imposition of fines and/or penalties, without contractual liability to the public in accordance with applicable law.
- D. All vendors submitting bids should register as a Jefferson Parish vendor if not already yet registered. Registration forms may be downloaded from <http://www.jeffparish.gov/464/Purchasing> and by clicking on Vendor Information. Current W-9 forms with respective Tax Identification numbers and vendor applications may be submitted at any time; however, if your company is not registered and/or a current W-9 form is not on file, vendor registration is mandatory. Vendors may experience a delay in payment if your company is not a registered vendor with Jefferson Parish.
- E. All quotations shall be based on F.O.B. Agency warehouse or job site (see Additional Requirements section), anywhere within the Parish as designated by the Purchasing Department.
- F. Jefferson Parish is exempt from paying sales tax under La. R.S. 47:301 (8)(c). All prices for purchases by Jefferson Parish of supplies and materials shall be quoted in the unit of measure specified and unless otherwise specified, shall be exclusive of state and local taxes.
- G. Jefferson Parish requires all products to be new (current) and all work must be performed according to standard practices for the project. Unless otherwise specified, no aftermarket parts will be accepted. Unless otherwise specified, all workmanship and materials must have at least one (1) year guaranty, in writing, from the date of delivery and/or acceptance of the project. Any deviations or alterations from the specifications must be indicated on the bid form with bid submission. Supporting documentation may be required upon request.

Visit our website at [HTTP://JEFFPARISH.GOV/464/PURCHASING](http://JEFFPARISH.GOV/464/PURCHASING)

INSTRUCTIONS FOR BIDDERS AND GENERAL CONDITIONS

- H. Where brand names and stock numbers are specified, it is for the purpose of establishing certain minimum standards of quality. Bids may be submitted for products of equal quality, provided brand names and stock numbers are specified. Complete product data may be required prior to award.
- I. The price quoted for work shall be stated in figures no more than four (4) decimal points. In the event there is a difference in unit prices and totals, the unit price shall prevail.
- J. JEFFERSON PARISH WILL ACCEPT ONE BID ONLY FROM EACH VENDOR. Items bid must meet specifications. Jefferson Parish will accept one price for each item unless otherwise indicated. Two or more prices for one item will result in bid rejection.
- K. Bidders are required to complete, sign and return the bid form and/or complete and return the associated line-item pricing forms as indicated.
- L. All formal Addenda require written acknowledgment on the bid form by the bidder by placing the Addendum number in the appropriate section. Failure to acknowledge an Addendum on the bid form shall cause the bid to be rejected; JEFFERSON PARISH reserves the right to award bid to next lowest responsive and responsible bidder in this event.
- M. Jefferson Parish reserves the right to award contracts or place orders on a lump sum or individual item basis, or such combination, as shall in its judgment be in the best interest of Jefferson Parish. Every contract or order shall be awarded to the LOWEST RESPONSIVE and RESPONSIBLE BIDDER, taking into consideration the CONFORMITY WITH THE SPECIFICATIONS and the DELIVERY AND/OR COMPLETION DATE. Quantities listed are for bidding purposes only. Actual requirements may be more or less than quantities listed.
- N. Jefferson Parish reserves the right to cancel all or any part of an order if not shipped promptly. No charges will be allowed for parking or cartage unless specified in the quotation. The order must not be filled at a higher price than quoted.
- O. Jefferson Parish reserves the right to cancel at any time and for any reason by issuing a THIRTY (30) day written notice to the contractor.
- P. PROTESTS: Only those vendors that submit bids in response to this solicitation may protest an element of the procurement, in writing to the Director of the Purchasing Department. Written protest must be received within 48 hours of the release of the bid tabulation by the Purchasing Department. After consultation, the Parish Attorney's Office will then respond to protests in writing. (For more information, please see Chapter 2, Article VII, Division 2, Sec. 2-914.1 of the Jefferson Parish Code of Ordinances.)
- Q. Proof of Cyber Security Training may be required for the successful bidder. Pursuant to La. R.S. 42:1267, any contractor who has access to state or local government information technology assets is required to complete cybersecurity training during the term of the contract and during any renewal period. As a Parish contractor, you are responsible for taking the cyber training, whether from the State or another source. After completion of said training please forward proof to your contract monitor/Parish contact.
- R. Bidders are not to exclude from participation in, deny the benefits of, or subject to discrimination under any program or activity, any person in the United States on the grounds of race, color, national origin, or sex; nor discriminate on the basis of age under the Age Discrimination Act of 1975, or with respect to an otherwise qualified handicapped individual as provided in Section 504 of the Rehabilitation Act of 1973, or on the basis of religion, except that any exemption from such prohibition against discrimination on the basis of religion as provided in the Civil Rights Act of 1964, or Title VI and VII of the Act of April 11, 1968, shall also apply. This assurance includes compliance with the administrative requirements of the Revenue Sharing final handicapped discrimination provisions contained in Section 51.55 (c), (d), (e), and (k)(5) of the Regulations. New construction or renovation projects must comply with Section 504 of the 1973 Rehabilitation Act, as amended, in accordance with the American National Standard Institute's specifications (ANSI A17.1-1961).
- S. Jefferson Parish and its partners as the recipients of federal funds are fully committed to awarding a contract(s) to firm(s) that will provide high quality services and that are dedicated to diversity and to containing costs. Thus, Jefferson Parish strongly encourages the involvement of minority and/or woman-owned business enterprises (DBE's, including MBE's, WBE's and SBE's) to stimulate participation in procurement and assistance programs.
- T. It shall be the duty of every parish officer, employee, department, agency, special district, board, and commission; and the duty of every contractor, subcontractor, and licensee of the parish, and the duty of every applicant for certification of eligibility for a parish contract or program, to cooperate with the Inspector General in any investigation, audit, inspection, performance review, or hearing pursuant to JPCO 2-155.10(19). By signing this document, every corporation, partnership, or person contracting with PARISH, whether by cooperative endeavor, intergovernmental agreement, bid, proposal, application or solicitation for a parish contract, and every application for certification of eligibility for a parish contract or program, attests that it understands and will abide by all provisions of JPCO 2-155.10.

INSTRUCTIONS FOR BIDDERS AND GENERAL CONDITIONS

IN ACCORDANCE WITH STATE REGULATIONS JEFFERSON PARISH OFFERS ELECTRONIC PROCUREMENT TO ALL VENDORS

This electronic procurement system allows vendors the convenience of reviewing and submitting bids online.

This is a secure site and authorized personnel have limited read access only. Bidders are to submit electronically using this free service; while the website accepts various file types, one single PDF file containing all appropriate and required bid documents is preferred. Bidders submitting uploaded images of bid responses are solely responsible for clarity. If uploaded images/documents are not legible, then bidder's submission will be rejected. Please note all requirements contained in this bid package for electronic bid submission.

Please visit our E-Procurement Page at www.jeffparishbids.net to register and view Jefferson Parish solicitations. For more information, please visit the Purchasing Department page at <http://www.jeffparish.gov/464/Purchasing>.

ADDITIONAL REQUIREMENTS FOR THIS BID

PLEASE MATCH THE NUMBERS PRINTED IN THIS BOX WITH THE CORRESPONDING INSTRUCTIONS BELOW. IF THE NUMBER IS NOT SPECIFIED IN THIS BOX, IT IS NOT APPLICABLE FOR THIS BID.

10,12,13

1. **MANDATORY PRE-BID** - All bidders must attend the MANDATORY pre-bid conference and will be required to sign in and out as evidence of attendance. In accordance with LA.R.S. 38:2212(I), all prospective bidders shall be present at the beginning of the MANDATORY pre-bid conference and shall remain in attendance for the duration of the conference. Any prospective bidder who fails to attend the conference or remain for the duration shall be prohibited from submitting a bid for the project.
2. **NON-MANDATORY PRE-BID** - Attendance to this pre-bid conference is optional. However, failure to attend the pre-bid conference shall not relieve the bidder of responsibility for information discussed at the conference. Furthermore, failure to attend the pre-bid conference and inspection does not relieve the successful bidder from the necessity of furnishing materials or performing any work that may be required to complete the work in accordance with the specification with no additional cost to the owner.
3. **JP LICENSE** - Contractor must hold current applicable JEFFERSON PARISH licenses with the Department of Building Permits. Contractor shall obtain any and all permits required by the JEFFERSON PARISH Department of Building Permits. The contractor shall be responsible for the payment of these permits. All permits must be obtained prior to the start of the project. Contractor must also hold any and all applicable municipality, Federal and/or State licenses. Contractor shall be responsible for the payment of these permits and shall obtain them prior to the start of the project.
4. **LSCB LICENSE** - A LA State Contractor's License will be required in accordance with LA.R.S. 37:2150 et. seq. and such license number must be entered in the appropriate field in the electronic procurement system. Failure to comply will cause the bid to be rejected.
5. **SITE VISIT** - It is the bidder's responsibility to visit the job site and evaluate the job before submitting a bid.

Visit our website at [HTTP://JEFFPARISH.GOV/464/PURCHASING](http://JEFFPARISH.GOV/464/PURCHASING)

INSTRUCTIONS FOR BIDDERS AND GENERAL CONDITIONS

6. **JOB SITE CLEANLINESS** - Job site must be clean and free of all litter and debris daily and upon completion of the contract. Passageways must be kept clean and free of material, equipment, and debris at all times. Flammable material must be removed from the job site daily because storage will not be permitted on the premises. Precautions must be exercised at all times to safeguard the welfare of JEFFERSON PARISH and the general public.
7. **PUBLIC WORKS BIDS** - All awards for public works in excess of \$5,000.00 will be reduced to a formal contract which shall be recorded at the contractor's expense with the Clerk of Court and Ex-Officio Recorder of Mortgages for the Parish of Jefferson. A price list of recordation costs may be obtained from the Clerk of Court and Ex-Officio Recorder of Mortgages for the Parish of Jefferson. All awards in excess of \$25,000.00 will require both a performance and a payment bond. Unless otherwise stated in the bid specifications, the performance bond requirements shall be 100% of the contract price. Unless otherwise state in the bid specifications, the payment bond requirements shall be 100% of the contract price. Both bonds shall be supplied at the signing of the contract.
8. **NON-PUBLIC WORKS BIDS** - A performance bond will be required for this bid. The amount of the bond will be 100% of the contract price unless otherwise indicated in the specifications. The performance bond shall be supplied at the signing of the contract.
9. **NON-PUBLIC WORKS BIDS** - A payment bond will be required for this bid. The amount of the bond will be 100% of the contract price unless otherwise indicated in the specifications. The payment bond shall be supplied at the signing of the contract.
10. **INSURANCE** - All bidders must comply with the requirements stated in the attached "Standard Insurance Requirements" sheet attached to this bid solicitation. Any deviation from the Standard Insurance Requirements must be requested in writing prior to bid opening. Proof of coverage will be required prior to award. Failure to comply with this instruction will result in bid rejection.
11. **BID BOND** - A bid bond will be required with bid submission in the amount of 5% of the total bid, unless otherwise stated in the bid specifications. Vendors must submit an electronic bid bond through the respective online clearinghouse bond management system(s) as indicated in the electronic bid solicitation on Central Auction House. No scanned paper copies of any bid bond will be accepted as part of the electronic bid submission.
12. **AS-NEEDED WORK** - This is a requirements-based contract to be provided on an as needed basis. JEFFERSON PARISH makes no representations on warranties with regard to minimum guaranteed quantities unless otherwise stated in the bid specifications.
13. **FREIGHT** - Freight charges should be included in total cost when quoting. If not quoted FOB DELIVERED, freight must be quoted as a separate item. Bid may be rejected if not quoted FOB DELIVERED or if freight charges are not indicated on bid form.
14. **AFFIDAVIT** - Completed, Signed and Properly Notarized Affidavits Required; This applies to all solicitations in conformity with the provisions contained in LA.R.S. 38:2212.9, LA.R.S. 38:2212.10, LA.R.S. 38:2224, and Sec 2-923.1 of the Jefferson Parish Code of Ordinances. For bidding purposes, all bidders must submit with bid submission COMPLETED, SIGNED and PROPERLY NOTARIZED Affidavits, including: Non-Conviction Affidavit, Non-Collusion Affidavit, Campaign Contribution Affidavit, Debt Disclosures Affidavit and E-Verify Affidavit. For the convenience of vendors, all affidavits have been combined into one form entitled GENERIC BID AFFIDAVIT. This affidavit must be submitted in its original format, and without material alteration, in order to be compliant and for the bid to be considered responsive. A scanned copy of the completed, signed and properly notarized affidavit may be submitted with the bid, however, the successful bidder must submit the original affidavit in its original format and without material alteration upon contract execution. Failure to comply will result in the bid submission being rejected as non-responsive. The Parish reserves the right to award bid to the next lowest responsive and responsible bidder in this event.
15. **FEDERAL FUNDING** - The ensuing contract for this bid solicitation may be eligible for FEMA reimbursement and/or Federal funding/reimbursement. As such, the referenced appendix will be applicable accordingly and shall be considered a part of the bid documents and ensuing contract. All applicable certifications must be duly completed, signed and submitted as per the appendix instructions. Failure to submit applicable certifications per the appendix instruction will result in bid rejection.
16. **TAX EXEMPT** - For this project, the Contractor shall not pay any state or local sales or use taxes on materials and equipment which are affixed and made part of the immovable property of the project or which is permanently incorporated in the project (hereinafter referred to as "applicable materials and equipment"). All purchases of applicable materials or equipment shall be made by the contractor on behalf of and as the agent of Jefferson Parish (Owner), a political subdivision of the State of Louisiana. No state and local sales and use taxes are owed on applicable materials and equipment under the provisions of Act 1029 of the 1991 Regular Session – Louisiana Revised Statute 47:301(8)(c). Owner will furnish to contractor a certificate form which certifies that Owner is not required to pay such state or local sales and use taxes, and contractor shall furnish a copy of such certificate to all vendors or suppliers of the applicable materials and equipment, and report to Owner the amount of taxes not incurred.
17. **TECH AFFIDAVIT** - The Technology Affidavit is required for this solicitation and shall be submitted with the bid submission. Failure to do so will result in your bid being rejected. Pursuant to La. R.S. 38:2237.1, prior to the procurement of telecommunications or video surveillance equipment or services, the vendor shall provide documentation by affidavit that the equipment or services to be procured are not prohibited telecommunications or video surveillance equipment or services as defined in R.S. 39:1753.1(A). This affidavit is supplied as a courtesy to Affiant. It is the responsibility of the affiant to insure the affidavit submitted to Jefferson Parish complies, in both form and content, with federal, state and parish laws. No procurement shall be made from a vendor or other entity who fails to provide the documentation; any procurement in contravention to this requirement shall be null and void by law.

DATE: 6/06/2025

INVITATION TO BID
THIS IS NOT AN ORDER

Page: 5

BID NO.: 50-00148141

JEFFERSON PARISH

PURCHASING DEPARTMENT
P.O. BOX 9
GRETNA, LA. 70054-0009
504-364-2678

VENDOR: 27118 BLANK BID COPY VENDOR

PURCHASING SPECIALIST:
SCHAMPAGNE

As per LSA-RS 47:301 et seq., all governmental bodies are excluded from payment of sales taxes to any Louisiana taxing body. Quotations shall be based on F.O.B. Agency warehouse or jobsite, anywhere within the Parish as designated by the Purchasing Department.

JEFFERSON PARISH reserves the right to cancel all or any part of an order if not shipped promptly. No charges will be allowed for parking or cartage unless specified in quotation. The order must not be filled at a higher price than quoted. JEFFERSON PARISH reserves the right to cancel at any time and for any reason by issuing a THIRTY (30) day written notice to the contractor.

JEFFERSON PARISH is expecting all products to be new and all work to be done in workman-like manner, according to standard practices. Any deviations or alteration from the specifications must be indicated on the bid form for each item and upon request, product data for same must be submitted by the time specified by the Purchasing Department.

DELIVERY: FOB JEFFERSON PARISH

INDICATE DELIVERY DATE ON EQUIPMENT AND SUPPLIES 2 to 4 weeks ARO

INDICATE STARTING TIME (IN DAYS) FOR CONSTRUCTION WORK _____

INDICATE COMPLETION TIME (IN DAYS) FOR CONSTRUCTION WORK _____

In the event that addenda are issued with this bid, bidders **MUST** acknowledge all addenda on the bid form. Bidder must acknowledge receipt of an addendum on the bid form by placing the addendum number as indicated. Failure to acknowledge any addendum on the bid form will result in bid rejection.

Acknowledge Receipt of Addenda: NUMBER: _____

NUMBER: _____

NUMBER: _____

NUMBER: _____

LOUISIANA CONTRACTOR'S LICENSE NO.: (if applicable) 75952

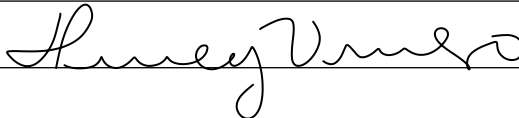
***** ALL BIDDERS MUST COMPLETE SECTION BELOW *****

FIRM NAME:

Monopoly Rental Properties

SIGNATURE:

(Must be signed here)



TITLE:

Owner

PRINT OR TYPE NAME:

Dimey Vivero

ADDRESS:

45331 Pine Hill Rd

CITY, STATE:

Hammond, LA

ZIP:

70401

TELEPHONE:

(985) 215-3113

FAX:

()

EMAIL ADDRESS:

mrpcontractors1@outlook.com

TOTAL PRICE OF ALL BID ITEMS: \$ 1,930.95

INVITATION TO BID FROM JEFFERSON PARISH - continued

BID NO.: 50-00148141

SEALED BID

ITEM NUMBER	QUANTITY	U/M	DESCRIPTION OF ARTICLES	UNIT PRICE QUOTED	TOTALS
			ONE (1) YEAR CONTRACT TO PROVIDE MATERIAL FOR JEFFERSON PARISH DEPARTMENT OF DRAINAGE		
1	1.00	LF	0010 21" PIPE, 14 GAUGE, STEEL	\$ 45.40	\$ 45.40
2	1.00	LF	0020 24"" PIPE, 14 GAUGE, STEEL	\$ 51.45	\$ 51.45
3	1.00	EA	0030 HUGGER BAND, 14 GAUGE, 24", STEEL	\$ 79.50	\$ 79.50
4	1.00	LF	0040 30" PIPE, 14 GAUGE, STEEL	\$ 65.50	\$ 65.50
5	1.00	EA	0050 HUGGER BAND, 14 GAUGE 30", STEEL	\$ 100.50	\$ 100.50
6	1.00	FT	0060 24" PVC PIPE	\$ 37.50	\$ 37.50
7	1.00	LF	0070 21" PVC PIPE	\$ 34.00	\$ 34.00
8	1.00	LF	0080 36" PVC PIPE	\$ 74.50	\$ 74.50
9	1.00	LF	0090 36" PIPE, 14 GAUGE, STEEL	\$ 78.50	\$ 78.50
10	1.00	EA	0100 HUGGER BAND, 14 GAUGE, 36", STEEL	\$ 120.65	\$ 120.65
11	1.00	LF	0110 42" PIPE, 14 GAUGE, STEEL	\$ 100.00	\$ 100.00
12	1.00	EA	0120 HUGGER BAND, 14 GAUGE, 42", STEEL	\$ 153.00	\$ 153.00
13	1.00	LF	0130 48" PIPE, 14 GAUGE, STEEL	\$ 116.25	\$ 116.25
14	1.00	EA	0140 HUGGER BAND, 14 GAUGE, 48", STEEL	\$ 173.00	\$ 173.00
15	1.00	LF	0150 54" PIPE, 14 GAUGE, STEEL	\$ 147.00	\$ 147.00

INVITATION TO BID FROM JEFFERSON PARISH - continued

BID NO.: 50-00148141

SEALED BID

ITEM NUMBER	QUANTITY	U/M	DESCRIPTION OF ARTICLES	UNIT PRICE QUOTED	TOTALS
16	1.00	EA	0160 HUGGER BAND, 14 GAUGE, 54", STEEL	\$ 147.00	\$ 147.00
17	1.00	LF	0170 60" PIPE, 14 GAUGE, STEEL	\$ 203.50	\$ 203.50
18	1.00	EA	0180 HUGGER BAND, 14 GAUGE ,60", STEEL	\$ 178.00	\$ 178.00
19	1.00	LF	0190 18" PVC PIPE	\$ 25.70	\$ 25.70
			NOTE: POLYMER COATING FOR THE STEEL PIPE AND HUGGER BANDS. THE GALVANIZED CULVERT IS STANDARD.		
			AS PER ATTACHED SPECIFICATIONS		