

## Statement of Qualifications

RESOLUTION NO. 139631

# PROFESSIONAL ELECTRICAL ENGINEERING SERVICES

*Presented to: Jefferson Parish Government*

---

July 15, 2022





July 15, 2022

Jefferson Parish Council  
General Government Building  
200 Derbigny Street, Suite 6700  
Gretna, LA 70054  
*Submitted electronically*

**RE: REQUEST FOR QUALIFICATIONS, PROFESSIONAL ELECTRICAL ENGINEERING SERVICES FOR  
MISCELLANEOUS STREET LIGHTING PROJECTS AND OTHER ELECTRICAL RELATED WORK THROUGHOUT  
JEFFERSON PARISH (RESOLUTION NO. 139631)**

Dear Consultant Selection Committee,

G.E.C., Inc. (GEC) is pleased to present our proposal in response to Jefferson Parish's request for qualifications for the referenced services. Our proposal is compliant with the RFQ instructions and demonstrates our ability to successfully deliver professional services. GEC (EF.0001917) is licensed to perform and complete professional services in the State of Louisiana through the Louisiana Professional Engineering and Land Surveying Board.

#### **COMPANY HISTORY**

Established in 1986, GEC has more than 100 employees and a long history of experience with similar projects. GEC offers comprehensive, multidisciplinary project planning, design, and implementation services for public and private clients nationwide. The diverse resources of the company include design and construction engineering, economic analysis, environmental and ecological sciences, and GIS applications. We commit to producing high quality planning and design documents on time and within budget in keeping with the special needs of our clients so they can meet their objectives in a timely and efficient manner. Many of the GEC personnel assigned to this contract have more than 10 years of experience providing similar services.

GEC is committed to providing responsive engineering and technical solutions for our clients, reinforced by our enclosed Mission, Vision, and Core Values statement. As the proposed Principal-in-Charge for this assignment, I will work to provide innovative, safe, environmentally responsible, and transparent professional services. We appreciate the opportunity to present our qualifications to Jefferson Parish for this as-needed contract.

Sincerely,

A handwritten signature in blue ink, reading 'Sherri LeBas', is written over a light blue horizontal line.

Sherri LeBas, PE  
Executive Vice President, G.E.C., Inc



## MISSION, VISION, AND CORE VALUES

### MISSION








To provide responsive engineering and technical solutions to our clients' needs in an innovative, safe, environmentally responsible, transparent, and successful manner for the long-term benefit of our valued clients and quality of life for everyone.

### VISION

To be recognized by our clients, throughout the areas we serve, as the company of choice and to constantly contribute to America's global progress while helping our clients by creating state-of-the-art engineering and technical solutions that are safer, more efficient, of superior quality and durability, sustainable, and more economically feasible than ever before.

### CORE VALUES

Core values are the cornerstone of how we do business and the basis for our guiding principles and the culture of our company.

-  To conduct all our business affairs with honesty, loyalty, quality, and integrity to our valued customers, partners, and co-workers.
-  To expect and demand excellent performance and innovation from all our employees on all of our projects in a respectful and collaborative working environment.
-  To constantly seek improvement in our technical and corporate skillset, in our work products, and to hold ourselves accountable to our clients, stakeholders, and to each other.
-  To never negotiate, compromise, or sacrifice the safety of all persons who will utilize, experience, or be exposed to our designed structures and work product for decades to come.
-  To strive to make the safety of our own co-workers a priority on a minute-by-minute basis.
-  To empower and invest in our people who remain our single greatest asset.
-  To foster an environment where thought, creativity, innovation, and contrarian ideas can thrive and translate into new, different, and better engineering solutions.

## TEC PROFESSIONAL SERVICES QUESTIONNAIRE

### A. PROJECT NAME AND ADVERTISEMENT RESOLUTION NUMBER:

**Professional Electrical Engineering Services for Miscellaneous Street Lighting Projects and other Electrical Related Work throughout Jefferson Parish**  
(Resolution No. 139631)

### B. FIRM NAME & ADDRESS WHERE PROJECT WORK WILL BE PERFORMED:

**G.E.C., Inc. (GEC)**  
3445 N. Causeway Blvd., Suite 707  
Metairie, Louisiana 70002

### C. NAME, TITLE AND CONTACT INFORMATION OF PRINCIPAL, AS DEFINED IN SECTION 2-926 OF THE JEFFERSON PARISH CODE OF ORDINANCES, WHO IS A REGISTERED, LICENSED ARCHITECT, PROFESSIONAL ENGINEER, OR SURVEYOR IN THE STATE OF LOUISIANA:

**Sherri LeBas, PE**, Executive Vice President  
P. (225) 612-3000 E. slebas@gecinc.com  
Louisiana Licensed Professional Civil Engineer No. 23844 (1990)

### D. NAME AND CONTACT INFORMATION OF EMPLOYEE WHO IS A REGISTERED AND LICENSED ARCHITECT, PROFESSIONAL ENGINEER, OR SURVEYOR IN THE STATE OF LOUISIANA IN THE APPLICABLE DISCIPLINE. A SUBCONTRACTOR MAY BE SUBSTITUTED HERE ONLY IF THE ADVERTISED PROJECT REQUIRES MORE THAN ONE DISCIPLINE.

**Mickey Prattini Jr., PE**, Electrical Engineer  
P. (504) 838-6009 E. mprattini@gecinc.com  
Louisiana Licensed Professional Electrical and Computer Engineer No. 35993 (2011)

### E. PLEASE PROVIDE THE NUMBER OF EMPLOYEES WHOSE PRIMARY FUNCTION CORRESPONDS WITH EACH CATEGORY:

<u>10</u>	Administrative	<u>**</u>	Estimators	<u>***</u>	Specification Writers
<u>0</u>	Architects (Licensed)	<u>0</u>	Geologists	<u>8</u>	Structural Engineers
<u>0</u>	Chemical Engineers	<u>0</u>	Geotechnical Engineers	<u>1</u>	Graduate Engineers
<u>19*</u>	Civil Engineers	<u>0</u>	Interior Designers	<u>2</u>	Project Managers
<u>15</u>	Construction Inspectors	<u>0</u>	Landscape Architects	<u>0</u>	Clerical
<u>5</u>	Ecologists	<u>0</u>	Land Surveyor	<u>0</u>	Grant/Funding Specialist
<u>3</u>	Electrical Engineers	<u>1</u>	Mechanical Engineers	<u>****</u>	Sanitary Engineers
<u>10</u>	Engineer Intern	<u>3</u>	Environmental Engineers	<u>37</u>	<b>Other</b>
<u>0</u>	Professional Land Surveyors	<u>1</u>	Urban Planner	<u>115</u>	<b>TOTAL</b>

\*Coastal, Transportation and Hydrologist included in Civil Engineers

\*\*Senior Technical Personnel prepare Cost Estimates

\*\*\*Senior Technical Personnel prepare Specifications

\*\*\*\*Sanitary Engineers included in Environmental Engineers

F. IS THIS SUBMITTAL BY A JOINT-VENTURE? PLEASE CHECK: YES \_\_\_\_\_ NO ✓

IF MARKED "NO" SKIP TO SECTION I. IF MARKED "YES" COMPLETE SECTIONS G-H.

## TEC PROFESSIONAL SERVICES QUESTIONNAIRE

**G. IF SUBMITTAL IS BY JOINT-VENTURE, LIST THE FIRMS PARTICIPATING AND OUTLINE SPECIFIC AREAS OF RESPONSIBILITY (INCLUDING ADMINISTRATIVE, TECHNICAL, AND FINANCIAL) FOR EACH FIRM. PLEASE ATTACH ADDITIONAL PAGES IF NECESSARY.**

1.  
N/A

2.

**H. HAS THIS JOINT-VENTURE PREVIOUSLY WORKED TOGETHER? PLEASE CHECK:**

YES \_\_\_\_\_ NO \_\_\_\_\_

**I. LIST ALL SUBCONTRACTORS ANTICIPATED FOR THIS PROJECT. PLEASE NOTE THAT ALL SUBCONTRACTORS MUST SUBMIT A FULLY COMPLETED COPY OF THIS QUESTIONNAIRE, APPLICABLE LICENSES, AND ANY OTHER INFORMATION REQUIRED BY THE ADVERTISEMENT. SEE JEFFERSON PARISH CODE OF ORDINANCES, SEC. 2-928(A)(3). PLEASE ATTACH ADDITIONAL PAGES IF NECESSARY.**

NAME & ADDRESS	SPECIALTY	WORKED WITH FIRM BEFORE (YES OR NO):
N/A		

**J. PLEASE SPECIFY THE TOTAL NUMBER OF SUPPORT PERSONNEL THAT MAY ASSIST IN THE COMPLETION OF THIS PROJECT:**

8 (additional individuals available to be assigned as needed)

## TEC PROFESSIONAL SERVICES QUESTIONNAIRE

K. LIST THE PROFESSIONAL IN CHARGE, KEY PERSONS, SPECIALISTS, AND INDIVIDUAL CONSULTANTS ANTICIPATED FOR THIS PROJECT AND PROVIDE THEIR RELEVANT INFORMATION BELOW. IF NECESSARY, PLEASE ATTACH ADDITIONAL DOCUMENTATION (I.E. RESUME) THAT DEMONSTRATES THE EMPLOYMENT HISTORY AND EXPERIENCE OF THE FIRM'S KEY PERSONS THAT MAY ASSIST IN THE COMPLETION OF THIS PROJECT. PLEASE ATTACH ADDITIONAL PAGES IF NECESSARY.

PROFESSIONAL IN CHARGE OF PROJECT:

NAME & TITLE:

**MICKEY PRATTINI JR., PE**, Electrical Section Manager

PROJECT ASSIGNMENT:

Electrical Engineer

NAME OF FIRM WITH WHICH ASSOCIATED:

**G.E.C., INC.**

YEARS' EXPERIENCE WITH THIS FIRM:

7 (18 total)

EDUCATION: DEGREE(S)/YEAR/SPECIALIZATION:

B.S. / 2004 / Electrical Engineering

ACTIVE REGISTRATION: YEAR FIRST REGISTERED/DISCIPLINE:

2011 / Louisiana Licensed Professional Electrical Engineer No. 35993

OTHER EXPERIENCE AND QUALIFICATIONS RELEVANT TO THE PROPOSED PROJECT:

Mr. Prattini's more than 18 years of electrical design experience includes wastewater treatment facilities and lift stations, multiple pump motor installations in hazardous (classified) locations, generator installation projects, lighting, and multiple government (municipal and transportation) projects. Mr. Prattini is experienced with NFPA standards required by electrical projects and is capable of completing the design and project management related tasks required for this project. He has consistently managed client and stakeholder relations along with design challenges to produce quality deliverables in line with the project's delivery schedule.

### RELEVANT PROJECT EXPERIENCE

**RETAINER NO. 44-2746, T.O. H.010916 / PRIEN LAKE MAIN SPAN RE-DECK:** Lake Charles, LA. Quality Control: Mr. Prattini performed Quality Control for this project. GEC provided design services under two Task Orders and will provide CE&I under a third. (06/15-10/15)

**RETAINER NO. 44-2746, T.O. H.010720 / I-12, LA 1088 INTERCHANGE LIGHTING:** Slidell, LA. Quality Control: Mr. Prattini performed Quality Control for this project.

GEC provided design services and construction services under two Task Orders. (10/15-04/18)

**RETAINER NO. 44-2746, T.O. H.003462 / I-12 AT NORTSHORE BOULEVARD INTERCHANGE LIGHTING:** Slidell, LA. Quality Control: Mr. Prattini performed Quality Control for this project. Services included design, development of plans and specifications, and CE&I as required. (02/16-05/18)

**RETAINER NO. 44-2746, T.O. H.010440 / I-210 OVER CALCASIEU RIVER WEST OF I-10 INTERSTATE LIGHTING:** Lake Charles, LA. Quality Control: Mr. Prattini performed Quality Control for this project. Services include feasibility study, design, development of plans and specifications, and CE&I as required. (11/16-02/17)

**RETAINER NO. 44-2746, T.O. H.012602 / MORRISON ROAD INTERSTATE LIGHTING:** New Orleans, LA. Quality Control: Mr. Prattini performed Quality Control for this project. Project limits included the I-10 / Morrison Road Interchange. GEC provided design and construction services under two separate Task Orders. (01/17-06/18)



## TEC PROFESSIONAL SERVICES QUESTIONNAIRE

NAME & TITLE:

**MICKEY PRATTINI JR., PE, *Continued Resume***

OTHER EXPERIENCE AND QUALIFICATIONS RELEVANT TO THE PROPOSED PROJECT:

**RETAINER NO. 44-2746, T.O. H.012469, US 190 MISSISSIPPI RIVER BRIDGE – NAVIGATION LIGHT REPLACEMENT:** Baton Rouge, LA. Quality Control: Mr. Prattini performed Quality Control for this project. Project makeup consists of the following types of roadway lighting standards: navigation and aviation lighting. GEC provided design services only under this contract. (02/17 – 02/17)

**H.004698/H.007250, LADOTD, ALMONASTER AVE. BRIDGE AND APPROACHES:** New Orleans, LA. Electrical Engineer / Quality Control: Mr. Prattini performed the preliminary electrical design followed by Quality Control in the later stages of this project. Project consisted of replacing the existing bridge with a rolling leaf bridge to support the roadway and railroad in accordance with all relevant standards. (07/15 – 02/17)

**H.013897 / I-10 & I-12 COLLEGE DR. FLYOVER RAMP DESIGN-BUILD PROJECT:** East Baton Rouge Parish, LA. Engineer of Record: Mr. Prattini has provided photometric and lighting design review and quality control review for the GEC/Boh Bros. team. GEC is responsible for engineering and design quality control services as necessary to complete the design and construction for the I-10 & I-12 College Dr Flyover Ramp Design-Build Project. (02/20-Present)

**H.004100.5 / I-10, LA 415 TO ESSEN LANE ON I-10 AND I-12:** West and East Baton Rouge Parishes, LA. Electrical Engineer: Mr. Prattini completed an enhancement lighting study for Segment 1 of the project to incorporate aesthetic lighting at the City Park Lake Bridge and emphasize the Greenway path from the Expressway Park to the bridge. (09/20-07/21)

**GNOEC, REPLACE THE DMS:** St. Tammany and Jefferson Parishes, LA. Electrical Engineer of Record: The project provided for the removal and replacement of 15 Dynamic Messaging Sign (DMS) installations on the Lake Pontchartrain Causeway Bridge and approach roadway systems. Over 5,000' of fiber and 15,000' of underground conduit was installed to upgrade GNOEC's Northshore

communications infrastructure. GEC identified unique opportunities to introduce system improvements for updating the traffic management system (hardware and software) placed on the overhead truss installed for the toll collection system. GEC identified unique opportunities to introduce system improvements that would have a direct impact on traffic management and the on-going effort to provide dynamic solutions. (06/15 – 09/18)

**COVINGTON COUNTRY CLUB SEWER REHAB:** Covington, LA. Construction Manager. GEC serves as the Consulting Engineer for the St. Tammany Parish Sewerage District No. 1 (District). The project was located in Covington Country Club Estates and consisted of CCTV existing sewer lines, performing CCIP lining in several lines, sewer point repairs, smoke testing, manhole rehabilitation, installation of two sewer force mains and the installation of a new sewer lift station. GEC completed the design and Mr. Prattini provided electrical design. (2021)

**CLEARY AND W. NAPOLEON LIFT STATION:** Jefferson, LA. Electrical Engineer of Record - Mr. Prattini designed and developed the electrical plans and specifications for the upgrading of existing equipment to two 67 HP dry well pumps operating on variable frequency drives, SCADA interface, and controls. (2017)

**OAK HARBOR EAST UTILITY, LAKESHORE ESTATES 300K WWTP EXPANSION:** Slidell, LA. Electrical Engineer of Record - Mr. Prattini designed the power distribution system for a 300,000 gallon per day WWTP system including generator standby power system, area lighting, and construction support. (2018-2019)

**STANDBY GENERATORS AT PARISH PUMP STATION (BIG BELLE TERRE, CAPT. BOURGEOIS, AND NED DUHE):** St John the Baptist Parish, LA. Project Manager & Electrical Engineer of Record - HMGP-funded project to install generators at three sewer lift station locations. Mr. Prattini is performing the project management duties, coordinating and tasking personnel, and overseeing the electrical design development. (2018-Present)

## TEC PROFESSIONAL SERVICES QUESTIONNAIRE

KEY PERSON, SPECIALIST, OR INDIVIDUAL CONSULTANT:

NAME & TITLE:

**SHERRI LEBAS, PE**, Executive Vice President

PROJECT ASSIGNMENT:

Principal-in-Charge

NAME OF FIRM WITH WHICH ASSOCIATED:

**G.E.C., INC.**

YEARS' EXPERIENCE WITH THIS FIRM:

6 (36 total)

EDUCATION: DEGREE(S)/YEAR/SPECIALIZATION:

B.S. / 1985 / Civil Engineering

ACTIVE REGISTRATION: YEAR FIRST REGISTERED/DISCIPLINE:

1990 / Louisiana Licensed Professional Civil Engineer No. 23844

OTHER EXPERIENCE AND QUALIFICATIONS RELEVANT TO THE PROPOSED PROJECT:

Ms. LeBas is Executive Vice President of GEC. She is a professional civil engineer with 36 years of experience in designing and managing numerous projects and programs during her career in Louisiana state government and private industry. During her 24.5 years at the Louisiana Department of Transportation and Development (LADOTD), Ms. LeBas designed and managed projects for a combined 14 years in the Road Design Section which led to serving as a facilitator for the Change Management Program, Assistant to the Secretary for Policy, Deputy Secretary and then Secretary for 6 years from 2010 to 2016.

From 1998 to 2003, Ms. LeBas managed projects funded through Capital Outlay at the Louisiana State Division of Administration, Facility Planning and Control. In May of 2016, Ms. LeBas brought her skills and experience to GEC providing services for LADOTD, City of Kenner, City of New Orleans, East Baton Rouge Parish and St. Tammany Parish. Ms. LeBas also meets with elected officials and other stakeholders discussing policy and resources required for infrastructure. Additionally, Ms. LeBas discusses opportunities for teaming with other consulting firms in order to present and provide a client with the best team possible to provide outstanding services and deliverables.



### RELEVANT PROJECT EXPERIENCE

**I-10 & I-12 COLLEGE DRIVE FLYOVER RAMP DESIGN-BUILD:** Baton Rouge, Louisiana. Quality Design Manager - Ms. LeBas is providing management of the quality design reviews for the GEC/Boh Bros. team. GEC is responsible for engineering design and quality reviews for roadway, drainage, bridge, noise walls, traffic management plans, intelligent transportation systems, and lighting. (08/20-Present)

**I-10: LA 415 TO ESSEN LANE ON I-10 AND I-12:** Baton Rouge, Louisiana. Assistant Project Manager - Ms. LeBas serves as Assistant Project Manager for this CMAR project, leading the development and annual updates of the Design Quality Manual, Project Management Plan, Initial Financial Plan, Project Implementation Plan and document control. Ms. LeBas is managing the Community Connections/Context Sensitive Solutions process which includes meetings with stakeholders and public outreach. In addition, Ms. LeBas provides management oversight of the design elements being designed by GEC engineers which include lighting (roadway and enhancement), retaining wall, bridge, and noisewalls, along with coordination with roadway and overall design elements. (09/20-Present)



## TEC PROFESSIONAL SERVICES QUESTIONNAIRE

KEY PERSON, SPECIALIST, OR INDIVIDUAL CONSULTANT:

NAME & TITLE:

**CARY BOURGEOIS, PE**, Senior Vice President

PROJECT ASSIGNMENT:

QA/QC

NAME OF FIRM WITH WHICH ASSOCIATED:

**G.E.C., INC.**

YEARS' EXPERIENCE WITH THIS FIRM:

37 (37 total)

EDUCATION: DEGREE(S)/YEAR/SPECIALIZATION:

B.S. / 1983 / Civil Engineering

ACTIVE REGISTRATION: YEAR FIRST REGISTERED/DISCIPLINE:

1983 / Louisiana Licensed Professional Civil Engineer No. 23414

OTHER EXPERIENCE AND QUALIFICATIONS RELEVANT TO THE PROPOSED PROJECT:

Mr. Bourgeois is GEC's Senior Vice President, currently involved in supervising activities and performing design services on several large-scale projects. Mr. Bourgeois is experienced in the areas of Bridge, Roadway, Toll Collection Systems and Intelligent Transportation Systems (ITS) design. He has extensive experience in safety inspection of bridges. He has valuable experience in the design of prestressed concrete girders, curved steel plate girders, continuous slabs, inverted "T" cap column bents, pile bents, footings, retaining walls, as well as geometry associated with bridge structures and roadways. He is thoroughly familiar with AASHTO Standard Specifications for Highway Bridges, AASHTO Policy on Geometric Design of Highways and Streets, Manual on Uniform Traffic Control Devices, the Highway Capacity Manual and the Standard Specifications for Structural Support for Highway Signs, Luminaries and Traffic Signals.

### RELEVANT PROJECT EXPERIENCE

**BLUEBONNET BLVD. (PERKINS TO PICARDY):** Baton Rouge, LA. Principal-in-Charge - GEC is designing the widening of Bluebonnet Blvd. to include an additional lane in each direction. Mr. Bourgeois oversaw an investigation of the existing bridge over Dawson Creek to determine whether the bridge should be widened or replaced

in accordance with Part 1, Chapter 6 of the LADOTD BDEM. This investigation started with an NBIS bridge inspection to determine Condition Ratings for the bridge superstructure, substructure, and piles. A Bridge Load Rating was then carried out based on the AASHTO Manual of Bridge Evaluation and the LADOTD BDEM. Based on the load rating, GEC recommended that the existing bridge be replaced. He also oversaw the preliminary design for the replacement bridge as well as the design study for a six-lane, curb and gutter roadway with pedestrian facilities and subsurface drainage. (09/20-Present) (City-Parish Project No. 19-CP-HC-0034)

### LA SAFE-AIRLINE AND MAIN COMPLETE STREETS:

Laplace, LA. Principal-in-Charge - This project consists of a 10' shared use path, 5' sidewalk along the north side of US 90, bike lanes on shoulders, and softening of the median. Existing ditches will have pipes added and be reshaped to provide detention ponds to reduce time of concentration. Along Main St., the design will provide parallel parking utilizing decorative brick and permeable base to reduce time of concentration. GEC oversaw the calculation of preliminary quantities and development of a preliminary estimated construction cost. GEC proposed the conceptual design to the Parish and received approval.



## TEC PROFESSIONAL SERVICES QUESTIONNAIRE

NAME & TITLE:

**CARY BOURGEOIS, PE, *Continued Resume***

OTHER EXPERIENCE AND QUALIFICATIONS RELEVANT TO THE PROPOSED PROJECT:

GEC also oversaw development of the fee for all costs from surveying to construction. (2019-Present)

**H.003074, I-10 WIDENING, WILLIAMS TO VETERANS :**

Jefferson Parish, LA. Principal in Charge - Mr. Bourgeois oversaw the superstructure and substructure load rating for existing bridges and ramps for this highly congested 2.28 mile urban interstate. The extensive load rating and documentation, allowed LADOTD to make an informed decision on whether to widen or replace the existing bridges. The data supported the replacement of the bridges. GEC designed concrete slab spans, pre-stressed concrete girder spans and steel girder spans. All pre-stressed girders were Louisiana (LG) girders designed in accordance with AASHTO LRFD bridge specs. (06/17-2021)

**450-15-0089 / ROUTE I-10, CAUSEWAY BLVD TO 17TH**

**STREET CANAL:** Metairie, LA. Project Manager/Engineer-of-Record/Structural Engineer - Mr. Bourgeois performed Quality Assurance and project management on this project. He specifically acted as QA for all disciplines involved including surveying, structures/bridge design, electrical & controls design and civil engineering design. Project consisted of widening while under traffic of 1.64 miles of urban interstate highway from six to 10 lanes with roadway and bridges. He performed PPC girder layout and design and performed the design check of a two-span (425' total length) continuous steel girder with integral steel intermediate bent. (03/95-06/10)

**I-10 SERVICE ROAD BRIDGE REPLACEMENTS:** Slidell, LA. Principal-in-Charge - The project includes the replacement of two slab span bridges. Mr. Bourgeois is Principal-in-Charge and oversaw the design phase of the project. (10/19-11/20)

**CHEVELLE AND SARASOTA DRIVE BRIDGE**

**REPLACEMENTS:** Baton Rouge, LA. Principal-in-Charge- GEC performed a Design Study, including hydraulics, environmental, and geotechnical considerations, overseeing topographic survey and Right-of-Way (ROW) Mapping as required; developing preliminary and final

construction plans and cost estimates. GEC will oversee construction phase services and preparation of an as-designed load rating for the bridge according to LADOTD criteria. The project includes the replacement of the existing Chevelle Drive Bridge over the West Fork of the North Branch of Ward Creek and the existing Sarasota Drive Bridge over Engineers Depot Canal, both located in Baton Rouge, LA. (04/2019-Present)

**USACE, LAKE PONTCHARTRAIN, LOUISIANA AND VICINITY, HURRICANE PROTECTION PROJECT LPV 17.2, BRIDGE ABUTMENT AND FLOODWALL TIE-INS AT CAUSEWAY BRIDGE:**

Metairie, LA. Overall Project Manager - This project was located in Jefferson Parish, Louisiana and was part of the Lake Pontchartrain and Vicinity, New Orleans, Louisiana, Hurricane Protection Project. This reach consisted of levees, floodwalls, crib walls, Causeway Boulevard and other miscellaneous access points. The designs were intended to bring the hurricane protection to the Phase II 100-year level. The professional services required of GEC included detailed engineering and design (E&D), preparation of a Design Report (DR), preparation of plans and specifications (P&S), and E&D support during advertisement. (07/09-06/12)

**GREATER NEW ORLEANS EXPRESSWAY COMMISSION (GNOEC), LAKE PONTCHARTRAIN CAUSEWAY,**

**CONSULTING ENGINEER:** Metairie, LA. Overall Project Manager - GEC has served as Consulting Engineer for GNOEC since 1991 performing Trust Indenture Services in accordance with the GNOEC General Bond Resolution. Mr. Bourgeois has been associated with the project since the selection of GEC as Consulting Engineer and has served as Project Manager for over 15 years. In this time GEC has designed and implemented over \$125,000,000 in improvements to the GNOEC system. (1991-Present)

## TEC PROFESSIONAL SERVICES QUESTIONNAIRE

KEY PERSON, SPECIALIST, OR INDIVIDUAL CONSULTANT:

NAME & TITLE:

**MICHAEL CHIASSON, PE**, Senior Electrical Engineer

PROJECT ASSIGNMENT:

Electrical Engineer

NAME OF FIRM WITH WHICH ASSOCIATED:

**G.E.C., INC.**

YEARS' EXPERIENCE WITH THIS FIRM:

12 (45 total)

EDUCATION: DEGREE(S)/YEAR/SPECIALIZATION:

B.S. / 1973 / Electrical Engineering

ACTIVE REGISTRATION: YEAR FIRST REGISTERED/DISCIPLINE:

1979 / Louisiana Licensed Professional Electrical Engineer No. 17978

OTHER EXPERIENCE AND QUALIFICATIONS RELEVANT TO THE PROPOSED PROJECT:

Mr. Chiasson has over 36 years of experience in the design and development of process control and related systems. At GEC Mr. Chiasson has completed designs for several waste water lift stations and drainage pumping stations. At Dow Chemical, he was responsible for the preparation of plans and specifications (design and development) of process control engineering projects, from plans and specifications to final construction inspection. Other duties include reverse engineering the manufactured systems to understand how to modify the instruments for computer control and data collection. Calculations, field inspections, data collection, and report preparation were also parts of these projects. Mr. Chiasson is experienced with modeling, digital data filtering and simulation of control systems using tools in Excel and other 1st and 2nd order modeling techniques. He is also well versed in Fortran, Visual Basic, Microsoft Word, and Microsoft Excel.

### RELEVANT PROJECT EXPERIENCE

**LAKE SHORE VILLAGES & OAK HARBOR EAST UTILITY WATER TREATMENT PLANT EXPANSION:** St. Tammany Parish, LA. Electrical Engineer: Includes design of improvements to the Lakeshore Estates development, including adding 450,000 gallon/day (GPD) capacity to the existing 500,000 GPD wastewater treatment plant. The expansion project included a 450,000 GPD

extended aeration treatment plant, tertiary filter system, chlorination system, yard piping, and site work. GEC's design of wastewater pumping system consists of ten pumping stations serving 2,950 homes, 600 apartments, and additional commercial development. Planned pump station capacities range from 100 to 480 GPM. (2019-Present)

### SANITARY SEWER SYSTEM UPGRADES, SOUTH FORCE MAIN AND GRAVITY SYSTEMS, PUMP STATION 58A:

Baton Rouge, LA. Electrical Engineer of Record - This project included preparation of electrical, instrumentation, and controls plans and specifications for installation of six 4,170 GPM pumps in the dry weather pump station and six 12,500 GPM pumps in the wet weather pump station. Pumps will be additively started and speed ramped up to maintain the lift station water level. Pumps will rotate through a use profile to keep any one pump from constantly being overused. Pump speed for each submersible pump is controlled by variable frequency drives as dictated by the station PLC control system. The station PLC control system will select single or parallel generator operation based on the pumping demand to optimize generator loading. Testing criteria to validate construction meets specification requirements was included in this project. (2010-2014) (City-Parish 09-PS-US-001)



## TEC PROFESSIONAL SERVICES QUESTIONNAIRE

NAME & TITLE:

**MICHAEL CHIASSON, PE, *Continued Resume***

OTHER EXPERIENCE AND QUALIFICATIONS RELEVANT TO THE PROPOSED PROJECT:

**BOOSTER PUMP STATION 514 REPLACEMENT:** Baton Rouge, LA. Electrical Engineer of Record - This project included preparation of electrical, instrumentation, and controls plans and specifications for installation of a new 80MGD submersible pump station and control building. The design includes six (6) 500 horsepower and two (2) 165 horsepower submersible pumps to handle wet and dry weather flow. Pumps will be additively started and speed ramped up to maintain the lift station water level. Pumps will rotate through a use profile to keep any one pump from constantly being overused. Pump speed for each submersible pump is controlled by variable frequency drives as dictated by the station PLC control system. The pump station design also included an automatic transfer controller and provisions for parallel 1600kW generators (furnished under separate contract and installed in this project). The station PLC control system will select single or parallel generator operation based on the pumping demand to optimize generator loading. Testing criteria to validate construction meets specification requirements was included. (2015) (City-Parish 09-PS-MS-0034)

**SANITARY SEWER SYSTEM UPGRADES, NORTH STN FORCE MAIN SANITARY SYSTEM, HIGHWAY 61 - PLANK ROAD MULTIPLE PUMP STATION REPLACEMENT:** Baton Rouge, LA. Senior Control Engineer - Mr. Chiasson was responsible for the control system for the motors and for the sensors around the building. (2018) (City- Parish Project No. 11-PS-MS-0035)

**CLEARY AND W. NAPOLEON LIFT STATION RENOVATION:** Jefferson, LA. Electrical Engineer of Record- Mr. Chiasson designed and developed the electrical plans and specifications for the upgrading of existing equipment to two 67 HP dry well pumps operating on variable frequency drives, SCADA interface, and controls. (2017)

**OAK HARBOR EAST UTILITY – LAKESHORE ESTATES 300K WWTP EXPANSION:** Slidell, LA. Controls Engineer - Mr. Chiasson assisted in design of the power distribution system for a 300,000 gallon per day WWTP system

including generator standby power system, area lighting, and construction support. (2018-2019)

**OAK HARBOR EAST UTILITY – LAKESHORE ESTATES 450K WWTP EXPANSION:** Slidell, LA. Controls Engineer- Mr. Chiasson is assisting with design of the power distribution system for a 450,000 gallon per day WWTP system. (2019-Present)

**DRAINAGE PUMP STATION UPGRADES:** Jefferson Parish, LA. Electrical Engineer - The Cousins 1, 2, & 3, Harvey, Whitney, Bayou Segnette, and Elmwood Pumping Stations projects involved automating both diesel and electric powered pumps to remove drainage water to prevent neighborhood flooding. The automation included sufficient remote controls so that pumps could be operated from either inside the pump station or from a “safe house” location. The requirement meant adding additional instrumentation to diesel and electric pumps so that the pumps could be started, stopped or RPM variance as needed. Project included adding instrumentation to monitor both the inlet and outlet water levels near pumping stations. The project also included adding generator capacity to assure pumping stations could run regardless of Utility power. (2009 - 2012)

**STORMPROOFING FOR COUSINS AND ELMWOOD PUMP STATIONS:** Jefferson Parish, LA. Project Engineer: The project includes preparation of electrical plans and specifications for installation of redundant emergency generators, automation of five diesel engine driven pumps and ancillary systems, installation of a CCTV camera system and various improvements to electrical systems to provide protection from flood and wind damage. SCADA automation design included control of fuel systems, vacuum priming systems, compressed air systems, trash raking systems as well as sensors for monitoring pressure, RPM, fluid level, temperature, and motor current. Monitoring and control interface will be via HMI touch screen panels in each pump station and in the site safehouse.



## TEC PROFESSIONAL SERVICES QUESTIONNAIRE

KEY PERSON, SPECIALIST, OR INDIVIDUAL CONSULTANT:

NAME & TITLE:

**TOM COERVER JR., PE, Senior Electrical Engineer**

PROJECT ASSIGNMENT:

Electrical Engineer

NAME OF FIRM WITH WHICH ASSOCIATED:

**G.E.C., INC.**

YEARS' EXPERIENCE WITH THIS FIRM:

31 (37 total)

EDUCATION: DEGREE(S)/YEAR/SPECIALIZATION:

B.S. / 1980 / Electrical Engineering; MBA / 1990 / Management Information Systems

ACTIVE REGISTRATION: YEAR FIRST REGISTERED/DISCIPLINE:

2003 / Louisiana Licensed Professional Electrical Engineer No. 30722

OTHER EXPERIENCE AND QUALIFICATIONS RELEVANT TO THE PROPOSED PROJECT:

Mr. Coerver has experience in engineering and planning for utilities distribution systems, automatic test systems, and navigation and flood control projects. He also has over 20 years of experience with computers using several operating systems for GIS design, implementation, and analysis; computer aided design and drafting; database design and analysis; and internet publishing. His most recent projects at GEC involved electrical power distribution systems, roadway and bridge lighting, fiber optic communication systems, and wireless and landline communication systems. Design duties include preparation of plans and specifications, Quality Control and Quality Assurance (QC/QA) review, calculations, data collection, and report preparation. Construction Engineering and Inspection (CE&I) duties include review of shop drawing and equipment submittals, respond to request for information, review/prepare as-built drawings, review payment applications, and perform periodic inspection and final system acceptance.

### RELEVANT PROJECT EXPERIENCE

**RETAINER NO. 44-2746, T.O. H.010916 / PRIEN LAKE MAIN SPAN RE-DECK:** Lake Charles, LA. Electrical Designer - Mr. Coerver designed roadway lighting for this project under the signing engineer. Project limits include

the I-210 Bridge over Prien Lake and the I-210 / Cove Lane Interchange. Project makeup consists of the following types of roadway lighting standards: 12 ground mount low mast and 50 barrier mount low mast. GEC provided design services under 2 Task Orders and will provide CE&I under a third. In addition, lighting control and power distribution and system protection is included. (06/15-Present)

**RETAINER NO. 44-2746, T.O. H.003451 / LA 434 INTERCHANGE LIGHTING (LACOMBE):** Lake Charles, LA. Electrical Engineer of Record- Mr. Coerver was the signing engineer on this project. Project limits include the I-12 / LA 434 Interchange. Project makeup consists of the following types of roadway lighting standards: 72 ground mount low mast and 4 underpass. GEC provided design services and construction services under two Task Orders. In addition, lighting control and power distribution and system protection was included. (06/16-03/19)

**RETAINER NO. 44-2746, T.O. H.010720 / I-12:** LA 1088 INTERCHANGE LIGHTING: Slidell, LA. Electrical Engineer of Record- Mr. Coerver was the signing engineer on this project. Project limits include the I-12/ LA 1088 Interchange. Project makeup consists of the following types of roadway lighting standards: 68 ground mount low mast and 8 underpass. GEC provided design services and



## TEC PROFESSIONAL SERVICES QUESTIONNAIRE

NAME & TITLE:

**TOM COERVER JR., PE, *Continued Resume***

OTHER EXPERIENCE AND QUALIFICATIONS RELEVANT TO THE PROPOSED PROJECT:

construction services under two Task Orders, in addition to lighting control, power distribution, and system protection. (07/15-10/16)

**S.P. NO. 450-15-0089, 17TH STREET CANAL TO CAUSEWAY (LADOTD, PROJECT NO. 450-15-0089):** Metairie, LA. Electrical Engineer - Projects limits are from 17th Street Canal to Causeway Blvd (approximately 2 miles along I-10). Project makeup consist of 120 ft. high mast poles, median lighting using individual lowering devices on 55 ft. poles, and conventional 40 ft. mounting height poles. In addition, lighting control and power distribution and system protection was included. Services included design, development of plans and specifications, and CE&I as required. (1999-2004)

**RETAINER NO. 44-2746, T.O. H.000687 / I-12 AT US-11 INTERCHANGE LIGHTING:** Slidell, LA. Electrical Engineer – Mr. Coerver performed electrical design, developed plans and specifications, and performed engineering during construction for the following types of roadway lighting standards: 55 ground-mount low mast, one ground mount high mast, and eight underpass. In addition, lighting control and power distribution and system protection was included in the design. (2018)

**RETAINER NO. 44-2746, T.O. H.003462 / I-12 AT NORTSHORE BOULEVARD INTERCHANGE LIGHTING:** Slidell, LA. Electrical Engineer – Project makeup consisted of the following types of roadway lighting standards: 27 ground mount low mast, 20 barrier mount low mast, 8 ground mount high mast, and 8 underpass. In addition, lighting control and power distribution and system protection was included. Services include design, development of plans and specifications, and CE&I as required. (2013-2018)

**RETAINER NO. 44-2746, T.O. H.010440 / I-210 OVER CALCASIEU RIVER WEST OF I-10 INTERSTATE LIGHTING:** Lake Charles, LA. Electrical Engineer – Project makeup consisted of the following types of roadway lighting standards: 44 ground mount low mast, 54 structure

mount low mast (bridge), 7 barrier mount low mast, 10 ground mount high mast, and 4 underpass. Mr. Coerver was the designer of the roadway lighting system on this project under the signing engineer. In addition, lighting control and power distribution and system protection was included. Services included design, development of plans and specifications, and CE&I. (2013-2018)

**RETAINER NO. 44-2746, T.O. H.012601 / READ BLVD INTERSTATE LIGHTING:** New Orleans, LA. Electrical Engineer of Record – Mr. Coerver provided submittal reviews for this project. GEC provided design and construction services under two separate Task Orders. (01/17-06/18)

**RETAINER NO. 44-2746, T.O. H.012602 / MORRISON ROAD INTERSTATE LIGHTING:** Slidell, LA. Electrical Engineer of Record – Mr. Coerver provided submittal reviews for this project. GEC provided design and construction services under two separate Task Orders. (01/17-06/18)

**H.003074 / I-10 WIDENING, WILLIAMS TO VETERANS BLVD:** New Orleans, LA. Electrical Designer: Mr. Coerver was involved in roadway lighting design and provided QA/QC on this project. GEC Electrical is responsible for preparing a feasibility study for the lighting within the project limits that will be affected by the widening of the I-10 in this area. This includes a total length of 2 miles of widening and three interchanges, all of which will need revisions to the lighting systems as well as significant coordination with the FAA for the lighting design. (06/17-Present)

**H.013897 / I-10 & I-12 COLLEGE DRIVE FLYOVER RAMP DESIGN-BUILD:** Baton Rouge, Louisiana. Electrical Engineer - Mr. Coerver has performed photometric and lighting layout design, sequence of construction, schedule analysis, and quality control review for the GEC/Boh Bros. team. (02/20-Present)

## TEC PROFESSIONAL SERVICES QUESTIONNAIRE

KEY PERSON, SPECIALIST, OR INDIVIDUAL CONSULTANT:

NAME & TITLE:

**LUIS DIAZ, EI**, Engineer Intern

PROJECT ASSIGNMENT:

Electrical Engineer

NAME OF FIRM WITH WHICH ASSOCIATED:

**G.E.C., INC.**

YEARS' EXPERIENCE WITH THIS FIRM:

1 (2 total)

EDUCATION: DEGREE(S)/YEAR/SPECIALIZATION:

B.S. / 2019 / Electrical Engineering

ACTIVE REGISTRATION: YEAR FIRST REGISTERED/DISCIPLINE:

2021 / Louisiana Licensed Engineer Intern No. 34863

OTHER EXPERIENCE AND QUALIFICATIONS RELEVANT TO THE PROPOSED PROJECT:

Mr. Diaz has 1 year of experience in designing electrical lighting and power systems at GEC Inc. As an engineer intern, under the supervision of a professional engineer, he has performed photometric calculations, voltage drop and conduit fill calculations, conductor sizing, equipment specifications, arc flash analysis, and protective device sizing for LADOTD interstate and urban projects. In addition to roadway lighting projects, Mr. Diaz has experience in the analysis of generator systems performing generator-sizing calculations to meet a project's power requirements. Mr. Diaz also worked at CDI Engineering Solutions for 1 year and 2 months under the supervision of a professional engineer. Luis checked wiring diagrams, detail drawings (MCC buckets and switchgear cabinets), one-lines, 3-lines, and schematics (breakers and motor starters). He also assisted in designing MCC elevations, detail drawings for MCC buckets, conductor sizing, and cable tray. Mr. Diaz has 6 years of experience working with electrical motors which included the task of tearing down, reconditioning and onsite inspection and diagnostics. Mr. Diaz also performed modifications such as C-PHASE conversion, space heater installation, and conversion of ball bearing lubrication from grease to oil mist. Performed the following tests: checked motor health, phase to phase

(megger), phase to ground (megger), and Vibration on 3-Phase motors with motors ranging from 480V-4160V (Specialized equipment). Luis graduated from Louisiana State University with a Bachelor's Degree in Electrical Engineering, specializing in Power Systems.

### RELEVANT PROJECT EXPERIENCE

**H.004100.5 / I-10, LA 415 TO ESSEN LANE ON I-10 AND I-12:** West and East Baton Rouge Parishes, LA. Electrical Design: Mr. Diaz assisted with an enhancement lighting study for Segment 1 of the project to incorporate aesthetic lighting at the City Park Lake Bridge and emphasize the Greenway path from the Expressway Park to the bridge. Luis also assists in the design of the Roadway, Walkway, Underpass, Service Road and Roundabout Lighting. Involved in the lighting analysis, voltage drop calculation, and lighting layout of the enhancement lighting. (07/21-Present)

**EMERGENCY GENERATORS AT TOWN OF SPRINGFIELD:** Spring Field, LA. Electrical Design – Mr. Diaz is assisting with detailed electrical design for the addition of two (2) emergency generators and accessories (transfer switches, etc.) to existing pump station sites in Spring Field. (05/22-Present)



## TEC PROFESSIONAL SERVICES QUESTIONNAIRE

NAME & TITLE:

**LUIS DIAZ, EI, Continued Resume**

OTHER EXPERIENCE AND QUALIFICATIONS RELEVANT TO THE PROPOSED PROJECT:

**RETAINER CONTRACT FOR ELECTRICAL SERVICES:** Statewide, LA. Construction Engineering and Inspection - In July 2019, GEC was selected by LADOTD for a six-year retainer contract to provide Stage 3 (Design) and Stage 5 (Construction Support/Inspection), services. For the I-10: Crowder Blvd. Interstate Lighting, Route I-10 project in Orleans Parish (H.013442), Mr. Diaz is providing construction related engineering services. (05/21-Present)

**H.013897 / I-10 & I-12 COLLEGE DR. FLYOVER RAMP DESIGN-BUILD PROJECT:** East Baton Rouge Parish, LA. Electrical Design: Mr. Diaz has assisted with photometric and lighting layout design for the GEC/Boh Bros. team. GEC is responsible for engineering and design quality control services as necessary to complete the design and construction for the I-10 & I-12 College Dr. Flyover Ramp Design-Build Project. (05/21-Present)

**H.007300 / LADOTD, KANSAS LN. – GARRETT RD. CONNECTOR:** Monroe, LA. Electrical Design: Mr. Diaz completed design under the supervision of the signing professional engineer. Design task included construction plan set development, photometric calculations, voltage drop and conduit fill calculations, conductor sizing, equipment specifications, arc flash hazard analysis, and protective device sizing. (2021-Present)

**H.013617.5 / LADOTD, I-10 / I-610 E INTERCHANGE - ORLEANS PARISH:** Metairie, LA. Electrical Design: Mr. Diaz completed design under the supervision of the signing professional engineer. Design task included construction plan set development, photometric calculations, voltage drop and conduit fill calculations, conductor sizing, equipment specifications, arc flash hazard analysis, and protective device sizing. (2021-Present)

**H.003074.5 / LADOTD, I-10, WILLIAMS BLVD. TO VETERANS BLVD.:** Kenner, LA. Electrical Design: Luis completed design work under the supervision of the signing professional engineer. Design task included construction plan set development, photometric calculations, voltage

drop and conduit fill calculations, conductor sizing, equipment specifications, arc flash hazard analysis, and protective device sizing. (2021-Present)

**SELA PUMP STATION #13 (SUBSTATIONS RELOCATION) – ALGIERS, ORLEANS PARISH:** New Orleans, LA. Electrical Design: GEC performed services for the relocation of the Algiers SELA Pump station's substation and construction of the new pump station including replacement of the existing diesel engines with three (3) 3500 Horsepower electric motors and three (3) 3.25MW 4160V generators. The new design includes a new electrical systems such as new Variable Frequency Drives and Medium-Voltage Switchgear as well as the relighting the pump station and the substation. (12/2021-Present)

**H.004273.5/ LADOTD, STANTEC, I-49 CONNECTOR, LAFAYETTE PARISH:** Lafayette, LA. Electrical Design: Perform Lighting analysis by the ramps of SE Evangeline Thruway for pole locations to coordinate with FAA to satisfy requirements near the airport. (2021 - Present)

**H.010916 / LADOTD, PRIEN LAKE MAIN SPAN RE-DECK:** Lake Charles, LA. Construction Engineering and Inspection: Review engineering shop drawings and equipment submittals from the contractor for acceptance to fabricate, install and purchase equipment for construction. Review and respond to request for information (RFIs). Project limits include the I-210 Bridge over Prien Lake and the I-210 / Cove Lane Interchange. Project makeup consists of the following types of roadway lighting standards: 12 ground mount low mast and 50 barrier mount low mast. (Ongoing)



## TEC PROFESSIONAL SERVICES QUESTIONNAIRE

KEY PERSON, SPECIALIST, OR INDIVIDUAL CONSULTANT:

NAME & TITLE:

**NICHOLAS MONTEGUT**, Electrical Designer

PROJECT ASSIGNMENT:

Electrical Design

NAME OF FIRM WITH WHICH ASSOCIATED:

**G.E.C., INC.**

YEARS' EXPERIENCE WITH THIS FIRM:

4 (4 total)

EDUCATION: DEGREE(S)/YEAR/SPECIALIZATION:

B.S. / 2017 / Electrical Engineering

ACTIVE REGISTRATION: YEAR FIRST REGISTERED/DISCIPLINE:

N/A

OTHER EXPERIENCE AND QUALIFICATIONS RELEVANT TO THE PROPOSED PROJECT:

Mr. Montegut has 3.5 years of experience in designing electrical lighting and power systems. As an engineer intern, under the supervision of a professional engineer, he has performed photometric calculations, voltage drop and conduit fill calculations, conductor sizing, equipment specifications, arc flash analysis, and protective device sizing for LADOTD interstate and urban projects. In addition to roadway lighting projects, Mr. Montegut has experience in the analysis of generator systems performing generator-sizing calculations to meet a project's power requirements, voltage drop and conduit fill calculations, conductor sizing, protective device coordination and arc flash analysis using ETAP. Mr. Montegut's experience with electrical systems includes boots on the ground field training, working as an electrician's assistant during four summers for Triad Electric and Controls. His portfolio of experience also includes working at Noranda Alumina as an intern. At Noranda, Nick updated the refinery's power system model in ETAP. This work involved monitoring, recording the power consumption of all motor control centers, collecting motor/pump parameters, protective device sizes and coordination settings, measuring lengths of conductors, and calculating the power generation capacity in each unit throughout the refinery. Mr. Montegut graduated from Louisiana State University with

a Bachelor's Degree in Electrical Engineering, specializing in Power Systems.

### RELEVANT PROJECT EXPERIENCE

#### LASAFE AIRLINE AND MAIN COMPLETE STREETS:

LaPlace, LA. Electrical Design - The project involved the design of a shared use path along Airline highway that would connect to Main St. This path would accommodate pedestrians and bicyclists. Mr. Montegut provided the illumination analysis to determine the placement of decorative light poles along the pathway. Mr. Montegut also completed the design of the construction plan set under the supervision of the signing engineer. Design task included voltage drop calculations, conduit routing, conductor sizing, and plan set development (09/19-Present)

#### EMERGENCY GENERATORS AT PARISH PUMP STATIONS (BIG BELLE TERRE, CAPT. BOURGEOIS, AND NED DUHE):

St. John the Baptist Parish, LA. Electrical Design – Mr. Montegut is assisting with detailed electrical design for the addition of three (3) emergency generators and accessories (transfer switches, etc.) to existing pump station sites in St. John the Baptist Parish. (04/18-Present)

#### H.004100.5 / I-10, LA 415 TO ESSEN LANE ON I-10 AND

I-12: West and East Baton Rouge Parishes, LA. Electrical



## TEC PROFESSIONAL SERVICES QUESTIONNAIRE

NAME & TITLE:

**NICHOLAS MONTEGUT, Continued Resume**

OTHER EXPERIENCE AND QUALIFICATIONS RELEVANT TO THE PROPOSED PROJECT:

Design: Mr. Montegut assisted with an enhancement lighting study for Segment 1 of the project to incorporate aesthetic lighting at the City Park Lake Bridge and emphasize the Greenway path from the Expressway Park to the bridge. (07/21-Present)

**RETAINER CONTRACT FOR ELECTRICAL SERVICES:** Statewide, LA. Construction Engineering and Inspection - In July 2019, GEC was selected by LADOTD for a six-year retainer contract to provide Stage 3 (Design) and Stage 5 (Construction Support/Inspection), services. For the I-10: Crowder Blvd. Interstate Lighting, Route I-10 project in Orleans Parish (H.013442), Mr. Montegut is providing construction related engineering services. (05/20-Present)

**H.013897 / I-10 & I-12 COLLEGE DR. FLYOVER RAMP DESIGN-BUILD PROJECT:** East Baton Rouge Parish, LA. Electrical Design - Mr. Montegut has assisted with photometric and lighting layout design for the GEC/Boh Bros team. Design tasks included construction plan set development, voltage drop and conduit fill calculations, conductor sizing, arc flash analysis, and protective device sizing.. GEC is responsible for engineering and design quality control services as necessary to complete the design and construction for the I-10 & I-12 College Dr Flyover Ramp Design-Build Project. (02/20-Present) – confirm role

**H.007300 / LADOTD, KANSAS LN. – GARRETT RD. CONNECTOR:** Monroe, LA. Electrical Design: Mr. Montegut completed design under the supervision of the signing professional engineer. Design task included construction plan set development, photometric calculations, voltage drop and conduit fill calculations, conductor sizing, equipment specifications, arc flash hazard analysis, and protective device sizing. (2019-Present)

**H.003074.5 / LADOTD, I-10, WILLIAMS BLVD. TO VETERANS BLVD.:** Kenner, LA. Electrical Design: Nick completed design work under the supervision of the signing professional engineer. Design task included construction

plan set development, photometric calculations, voltage drop and conduit fill calculations, conductor sizing, equipment specifications, arc flash hazard analysis, and protective device sizing. (2018-Present)

**H.012601.6 / LADOTD, READ BLVD INTERSTATE LIGHTING:** New Orleans, LA. Construction Engineering and Inspection: Review engineering shop drawings and equipment submittals from the contractor for acceptance to fabricate, install and purchase equipment for construction. Review and respond to request for information (RFIs). Project limits include the I-10 / Read Blvd. Interchange. Project makeup consists of the following types of roadway lighting standards: ground mount low mast, structure mount low mast, ground mount high mast, and underpass. (01/2017 - Present)

**H.012602.6 / LADOTD, MORRISON ROAD INTERSTATE LIGHTING:** New Orleans, LA. Construction Engineering and Inspection: Review engineering shop drawings and equipment submittals from the contractor for acceptance to fabricate, install and purchase equipment for construction. Review and respond to request for information (RFIs). Project limits include the I-10 / Morrison Road Interchange. Project makeup consists of the following types of roadway lighting standards: ground mount low mast, structure mount low mast, ground mount high mast, and underpass. (01/2017 - Present)

**H.010916 / LADOTD, PRIEN LAKE MAIN SPAN RE-DECK:** Lake Charles, LA. Construction Engineering and Inspection: Review engineering shop drawings and equipment submittals from the contractor for acceptance to fabricate, install and purchase equipment for construction. Review and respond to request for information (RFIs). Project limits include the I-210 Bridge over Prien Lake and the I-210 / Cove Lane Interchange. Project makeup consists of the following types of roadway lighting standards: 12 ground mount low mast and 50 barrier mount low mast. (Ongoing)

## TEC PROFESSIONAL SERVICES QUESTIONNAIRE

KEY PERSON, SPECIALIST, OR INDIVIDUAL CONSULTANT:

NAME & TITLE:

**GEORGE "BOWMAN" GUTTNER, Senior Inspector**

PROJECT ASSIGNMENT:

Electrical Inspector

NAME OF FIRM WITH WHICH ASSOCIATED:

**G.E.C., INC.**

YEARS' EXPERIENCE WITH THIS FIRM:

17 (22 total)

EDUCATION: DEGREE(S)/YEAR/SPECIALIZATION:

N/A

ACTIVE REGISTRATION: YEAR FIRST REGISTERED/DISCIPLINE:

N/A

OTHER EXPERIENCE AND QUALIFICATIONS RELEVANT TO THE PROPOSED PROJECT:

Mr. Guttner has 22 years of experience in electrical system design and construction of low voltage systems, 8 of which he worked as a licensed electrical contractor in the state of Louisiana. He also has experience in the installation and maintenance of UPS and emergency generator backup power systems. He is the lead inspector for GEC on electrical power construction projects.

### RELEVANT PROJECT EXPERIENCE

**EMERGENCY GENERATORS AT PARISH PUMP STATIONS (BIG BELLE TERRE, CAPT. BOURGEOIS, AND NED DUHE):** St. John the Baptist Parish, LA. Inspector-HMGP-funded project to install generators at three sewer lift station locations. Mr. Guttner is designing the preliminary site layouts, field-verifying existing equipment ratings and locations, and coordinating with vendors. On-site inspection to be performed in future. (04/18-Present)

**READ BLVD INTERSTATE LIGHTING:** New Orleans, LA. Inspector – Project limits include the I-10 / Read Blvd. Interchange. Project makeup consists of: ground mount low mast, structure mount low mast, ground mount high mast, and underpass. GEC provided design services only under this contract. In addition, lighting control and power distribution and system protection is included.

**MORRISON ROAD INTERSTATE LIGHTING:** New Orleans, LA. Inspector – Project limits include the I-10 / Morrison Road Interchange. Project makeup consists of: ground mount low mast, structure mount low mast, ground mount high mast, and underpass. GEC provided design services only under this contract. In addition, lighting control and power distribution and system protection is included.

**LA 434 INTERCHANGE LIGHTING:** Slidell, LA. Inspector – Project limits include the I-12 / LA 434 Interchange. Project makeup consists of: 72 ground mount low mast and 4 underpass. GEC provided construction services only under this contract after the previous contract, H.003451. In addition, lighting control and power distribution and system protection is included.

**I-12, LA 1088 INTERCHANGE LIGHTING:** Slidell, LA. Inspector – Project limits include the I-12 / LA 1088 Interchange. Project makeup consists of: 68 ground mount low mast and 8 underpass. GEC provided construction services only under this contract after the previous contract, H.003451. In addition, lighting control and power distribution and system protection is included.



## TEC PROFESSIONAL SERVICES QUESTIONNAIRE

**L. WORK BY FIRM OR JOINT-VENTURE MEMBERS WHICH BEST ILLUSTRATES CURRENT QUALIFICATIONS RELEVANT TO THIS PROJECT. PLEASE INCLUDE ANY AND ALL WORK PERFORMED FOR JEFFERSON PARISH. PLEASE ATTACH ADDITIONAL PAGES IF NECESSARY.**

PROJECT NO. 1

PROJECT NAME, LOCATION AND  
OWNER'S CONTACT  
INFORMATION:

**US 61 ROADWAY  
LIGHTING,  
DAVID DRIVE TO  
TRANSCONTINENTAL**  
Jefferson Parish, Louisiana

*Client: Jefferson Parish  
Government, Mark  
Drewes, 504-736-6500*

NATURE OF FIRM'S RESPONSIBILITY:

GEC provided professional engineering services as required for the design and preparation of detailed bid documents (plans and technical specifications) for the improvements of roadway lighting on US-61 (Airline Highway) from David Drive to Transcontinental Drive.

GEC's lighting design was based on decorative poles and LED roadway luminaires consistent with adjacent lighting along US-61 and included approximately 80 lights. GEC staff members designed plans and specifications including electrical design of lighting systems, voltage drop and conduit fill calculations, photometric calculation and analysis, coordination with Parish standards for decorative roadway lighting and inventory, and engineering opinion of construction cost. This route is within the LADOTD right-of-way, requiring the fulfillment of the LADOTD Lighting and Utility Permit Requirements.



COMPLETION DATE (ACTUAL OR  
ESTIMATED):

2018

ESTIMATED COST:

ENTIRE PROJECT:

\$ 1,182,000 (Estimated)

WORK FOR WHICH FIRM WAS RESPONSIBLE:

\$ 87,000 (GEC Fees)

## TEC PROFESSIONAL SERVICES QUESTIONNAIRE

**L. WORK BY FIRM OR JOINT-VENTURE MEMBERS WHICH BEST ILLUSTRATES CURRENT QUALIFICATIONS RELEVANT TO THIS PROJECT. PLEASE INCLUDE ANY AND ALL WORK PERFORMED FOR JEFFERSON PARISH. PLEASE ATTACH ADDITIONAL PAGES IF NECESSARY.**

PROJECT NO. 2

PROJECT NAME, LOCATION AND  
OWNER'S CONTACT  
INFORMATION:

**ELMWOOD  
CANAL LIGHTING  
IMPROVEMENTS**  
Jefferson Parish, Louisiana

*Client: Jefferson Parish  
Government, Mark  
Drewes, 504-736-6500*

NATURE OF FIRM'S RESPONSIBILITY:

This project included providing professional engineering services as required for the design and preparation of detailed bid documents (plans and technical specifications) for the improvements of roadway lighting on West Esplanade Avenue at the Elmwood Canal. The design used single and double arm decorative poles with LED "acorn" luminaires.

GEC staff members performed design of plans and specifications including:

- Electrical design of lighting systems
- Voltage drop and conduit fill calculations
- Photometric Calculation and Analysis
- Structural details

Additional services provided to the Parish relative to the improvements involved:

- Coordination with Parish Standards for decorative roadway lighting and inventory
- Engineering opinion of construction cost

GEC also provided construction administration services including:

- Field inspections
- Progress meetings
- Preparation of as-built plans
- Final inspections



COMPLETION DATE (ACTUAL OR  
ESTIMATED):

2012

ESTIMATED COST:

ENTIRE PROJECT:

Unknown

WORK FOR WHICH FIRM WAS RESPONSIBLE:

\$ 73,000 (GEC Fees)



## TEC PROFESSIONAL SERVICES QUESTIONNAIRE

**L. WORK BY FIRM OR JOINT-VENTURE MEMBERS WHICH BEST ILLUSTRATES CURRENT QUALIFICATIONS RELEVANT TO THIS PROJECT. PLEASE INCLUDE ANY AND ALL WORK PERFORMED FOR JEFFERSON PARISH. PLEASE ATTACH ADDITIONAL PAGES IF NECESSARY.**

PROJECT NO. 3

PROJECT NAME, LOCATION AND  
OWNER'S CONTACT  
INFORMATION:

NATURE OF FIRM'S RESPONSIBILITY:

**AMES BLVD  
DECORATIVE  
STREET LIGHTING  
IMPROVEMENTS**

Jefferson Parish, Louisiana

*Client: Jefferson Parish  
Government, Nolan  
Carreras, PE, 504-736-  
6515*

The Ames Blvd Lighting Project consists of Ames Blvd from the Westbank Expressway to Lapalco Blvd.

The lighting project shall install new decorative light poles and luminaires for a more aesthetically pleasing roadway lighting system than the existing lighting fixtures currently mounted on wooden utility poles. The project includes preliminary, final design, bidding, construction, record drawings. GEC is currently in final design.



Jefferson  
Parish

State of Louisiana

COMPLETION DATE (ACTUAL OR  
ESTIMATED):

ESTIMATED COST:

ENTIRE PROJECT:

WORK FOR WHICH FIRM WAS RESPONSIBLE:

Ongoing

Unknown

\$ 59,250 (GEC Fees)

## TEC PROFESSIONAL SERVICES QUESTIONNAIRE

**L. WORK BY FIRM OR JOINT-VENTURE MEMBERS WHICH BEST ILLUSTRATES CURRENT QUALIFICATIONS RELEVANT TO THIS PROJECT. PLEASE INCLUDE ANY AND ALL WORK PERFORMED FOR JEFFERSON PARISH. PLEASE ATTACH ADDITIONAL PAGES IF NECESSARY.**

PROJECT NO. 4

PROJECT NAME, LOCATION AND  
OWNER'S CONTACT  
INFORMATION:

NATURE OF FIRM'S RESPONSIBILITY:

**HARVEY WWTP –  
SWITCHGEAR**  
Jefferson Parish, Louisiana

*Client: Digital Engineering  
& Imaging, Inc., Tim  
Smith, 504-468-6129*

The Harvey WWTP is located in Jefferson Parish near the intersection of Paillet Avenue and Joseph Street. Operations personnel have identified the deteriorating condition of the existing electrical equipment as nearing end of life due to signs of rust and deterioration. The overall goal of the project is the replacement of electrical service distribution system components deemed as end of life. The implementation of a replacement system shall not impose any major equipment outages due to the continued operation of the WWTP deemed as necessary to serve the general public. The project includes preliminary and design phase. GEC is currently in the design phase.



COMPLETION DATE (ACTUAL OR  
ESTIMATED):

ESTIMATED COST:

ENTIRE PROJECT:

WORK FOR WHICH FIRM WAS RESPONSIBLE:

Ongoing

Unknown

\$ 294,355.65 (GEC Fees)

## TEC PROFESSIONAL SERVICES QUESTIONNAIRE

**L. WORK BY FIRM OR JOINT-VENTURE MEMBERS WHICH BEST ILLUSTRATES CURRENT QUALIFICATIONS RELEVANT TO THIS PROJECT. PLEASE INCLUDE ANY AND ALL WORK PERFORMED FOR JEFFERSON PARISH. PLEASE ATTACH ADDITIONAL PAGES IF NECESSARY.**

PROJECT NO. 5

PROJECT NAME, LOCATION AND OWNER'S CONTACT INFORMATION:

**DECORATIVE ROADWAY LIGHTING**

Jefferson Parish, Louisiana

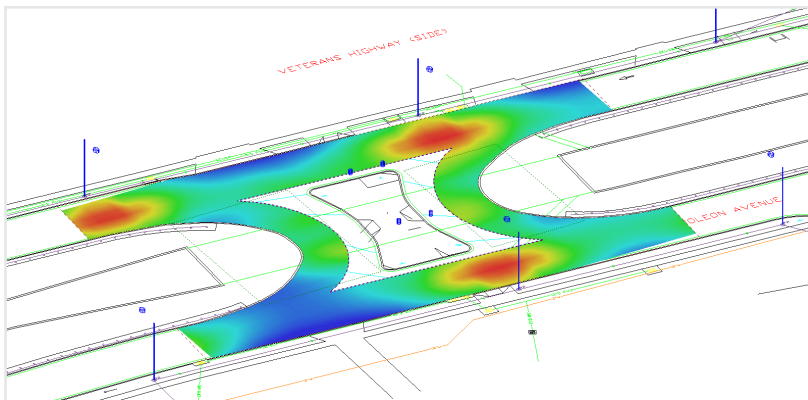
*Client: Jefferson Parish Government, Peggy McMurray, 504-736-6941*

NATURE OF FIRM'S RESPONSIBILITY:

As a pre-qualified consultant for Electrical Services with Jefferson Parish, GEC performed a number of Roadway Lighting projects.

GEC's electrical staff designed decorative (LED) roadway luminaires on 1.3 miles of West Esplanade between Power Boulevard and St. Martin Street, 2 miles of West Napoleon between Michigan Ave and Kent Ave. and 1 mile of US-61 (Airline Highway) in Jefferson Parish, LA. Approximately 65 lights were used to illuminate the intersection at Power Boulevard and West Esplanade, five U-turns on West Esplanade, and seven U-turns on West Napoleon.

GEC's design provides enhanced safety for pedestrians and vehicular traffic with uniform light levels in the transition from travel lanes to turn and U-turn lanes while maintaining an aesthetically pleasing appearance.



COMPLETION DATE (ACTUAL OR ESTIMATED):

2015

ESTIMATED COST:

ENTIRE PROJECT:

Unknown

WORK FOR WHICH FIRM WAS RESPONSIBLE:

\$ 135,000 (GEC Fees)



## TEC PROFESSIONAL SERVICES QUESTIONNAIRE

**L. WORK BY FIRM OR JOINT-VENTURE MEMBERS WHICH BEST ILLUSTRATES CURRENT QUALIFICATIONS RELEVANT TO THIS PROJECT. PLEASE INCLUDE ANY AND ALL WORK PERFORMED FOR JEFFERSON PARISH. PLEASE ATTACH ADDITIONAL PAGES IF NECESSARY.**

PROJECT NO. 6

PROJECT NAME, LOCATION AND  
OWNER'S CONTACT  
INFORMATION:

NATURE OF FIRM'S RESPONSIBILITY:

**RETAINER CONTRACT  
FOR ELECTRICAL  
SERVICES**

Statewide, Louisiana

*Client: LADOTD, Joseph  
Douglas, PE, 225-379-  
1315*

In July 2019, GEC was selected by LADOTD for a six year retainer contract to provide Stage 3 (Design) and Stage 5 (Construction Support/Inspection), services.

GEC's design services include preparation of construction plans, specifications and special provisions, feasibility studies, construction cost estimates, photometric analysis of new and existing systems, and engineering calculations (including structural and arc flash analysis).

GEC also provides construction related engineering services for existing and proposed roadway lighting projects including shop drawing and submittal reviews. Finally, GEC performs other electrical design and construction services as requested by LADOTD.

Task orders include:

- H.013442, I-10: Crowder Blvd. Interstate Lighting, Route I-10, Orleans Parish
- H.013617.5, I-10: I-610 E Interchange Lighting, Route I-10, Orleans Parish
- H.014552.5, I-49: LA 31 Interchange Lighting (Opelousas)
- H.014553.5, I-49: LA 3233 Interchange Lighting (Opelousas)
- H.012469.5, US 190: BRB-Navigation Light Replacement
- H.014556.5, I-49: US 190 Interchange Lighting (Opelousas)
- H.014557.5, I-49: Judge Walsh Drive Interchange Lighting (Opelousas)

COMPLETION DATE (ACTUAL OR  
ESTIMATED):

ESTIMATED COST:

ENTIRE PROJECT:

WORK FOR WHICH FIRM WAS RESPONSIBLE:

Ongoing

Varies (Estimated)

\$ 500,000 (Est. GEC Fees)

## TEC PROFESSIONAL SERVICES QUESTIONNAIRE

**L. WORK BY FIRM OR JOINT-VENTURE MEMBERS WHICH BEST ILLUSTRATES CURRENT QUALIFICATIONS RELEVANT TO THIS PROJECT. PLEASE INCLUDE ANY AND ALL WORK PERFORMED FOR JEFFERSON PARISH. PLEASE ATTACH ADDITIONAL PAGES IF NECESSARY.**

PROJECT NO. 7

PROJECT NAME, LOCATION AND  
OWNER'S CONTACT  
INFORMATION:

NATURE OF FIRM'S RESPONSIBILITY:

**RETAINER CONTRACT  
FOR ELECTRICAL  
SERVICES**

Statewide, Louisiana

*Client: LADOTD, Joseph  
Douglas, PE, 225-379-  
1315*

GEC was selected by LADOTD for a six-year retainer contract to provide Stage 3 (design – Part I, III, and IV) and Stage 5 (construction – Part I and II), services. Design services included preparation of construction plans, specifications and special provisions, feasibility studies, construction cost estimates, photometric analysis of new and existing systems, and engineering calculations (including structural and arc flash analysis). GEC also provided construction related engineering services for existing and proposed roadway lighting projects including shop drawing and submittal reviews. In addition, the scope of work included the performance of independent reviews on lighting and enhancement projects (designed by others) and for permit review as submitted by the DOTD Project Manager. Finally, GEC performed other electrical design and construction services as requested by LADOTD.

For this contract, GEC was prime with one sub-consultant for survey tasks. This retainer contract included two pilot projects to install the first two LADOTD interstate lighting systems using LED high mast and LED low mast roadway lighting. Various lighting was included on these contracts including high mast, low mast, underpass, navigation, and aviation. A total of 21 task orders were executed; selected projects included:

- H.010440, I-210 Over Calcasieu River West of I-10 Interstate Lighting, Lake Charles, LA.
- H.003452/H.000687, I-12 @ Northshore Blvd. Interchange Lighting/ US-11 Interchange Lighting – Slidell, LA
- H.010916, Prien Lake Main Span Re-Dec, Lake Charles, LA
- H.012469, US 190: Miss River Br – Navigation Light Replacement, Baton Rouge, LA
- H.012601.5/H.012602.5, LADOTD, Read Blvd Interstate Lighting/ Morrison Road Interstate Lighting, New Orleans, LA
- H.000687, I-12 @ US-11 Interchange Lighting – Slidell, LA.
- H.010720, I-12 @ LA 1088 Interchange Lighting – Slidell, LA.
- H.009185, LADOTD, I-12 Northshore/Airport Rd. - US 11, Slidell, LA.
- H.003451, LADOTD, LA 434 Interchange Lighting (Lacombe), Slidell, LA.
- H.012602.5, LADOTD, Morrison Road Interstate Lighting, New Orleans, LA.

As part of this retainer contract, GEC regularly coordinated with multiple local, state, and federal agencies and entities. These included: Federal Aviation Administration, United States Coast Guard, Amtrak and Kansas City Southern railroads, New Orleans Parks and Parkways, LADOTD Electrical, Road, and Bridge Design, various electrical contractors and other design consultants.

COMPLETION DATE (ACTUAL OR  
ESTIMATED):

ESTIMATED COST:

ENTIRE PROJECT:

WORK FOR WHICH FIRM WAS RESPONSIBLE:

2018

\$ 49,000,000 (Estimated)

\$ 5,000,000 (Est. GEC Fees)

## TEC PROFESSIONAL SERVICES QUESTIONNAIRE

**L. WORK BY FIRM OR JOINT-VENTURE MEMBERS WHICH BEST ILLUSTRATES CURRENT QUALIFICATIONS RELEVANT TO THIS PROJECT. PLEASE INCLUDE ANY AND ALL WORK PERFORMED FOR JEFFERSON PARISH. PLEASE ATTACH ADDITIONAL PAGES IF NECESSARY.**

PROJECT NO. 8

PROJECT NAME, LOCATION AND  
OWNER'S CONTACT  
INFORMATION:

**I-10 WIDENING,  
WILLIAMS BLVD. TO  
VETERANS BLVD.**

Jefferson Parish, Louisiana

*Client: LADOTD, Timothy  
Nickel, 225-379-1110*

NATURE OF FIRM'S RESPONSIBILITY:

GEC is currently designing the widening of I-10 between Williams Boulevard and Veterans Boulevard interchanges in Jefferson Parish, including design of new bridges. Final design plans are over 90% complete. The total project length is 2.58 miles and consists of the construction of one 12' additional lane with a 10' shoulder inside along the I-10 eastbound and westbound roadways. Included in the project is the replacement and widening of the bridges over Canal No. 3 and Veterans Blvd. Sound Barriers, both ground-mounted and structure-mounted on the north side of I-10, form part of this project.

GEC's lighting design department has been tasked with performing lighting design on the interchanges within the project limits - namely, Williams Blvd., Power Blvd., and Veterans Blvd. The lighting design included photometric analyses of the existing lighting system with the proposed roadway geometry and analyzes the design issues found during GEC's review.

The bridges over Canal No. 3 and Veterans Blvd. will be replaced with a combination of concrete slab spans, PPC girder spans, and steel plate girder spans. Design has also been performed on the replacement of portions of the concrete lining of Canal No. 3 that will be impacted by the new bridge design.

The new GEC-designed bridges over Canal No. 3 and Veterans Blvd. will be constructed in 3 phases to maintain 3 lanes of traffic on I-10 in each direction at all times.

GEC performed an initial extensive load rating of the existing bridges on this stretch of I-10, resulting in LADOTD making an informed decision to replace the bridges. GEC submitted 90% plans for the replacement bridges and ramps for this highly congested 2.58 mile urban interstate project and completed a detailed as-designed bridge rating for this project in accordance with Bridge Design Technical Memorandum 40.1.

In addition, GEC's structural staff is replacing the existing cantilever truss with a full truss and relocating the existing sign.

COMPLETION DATE (ACTUAL OR  
ESTIMATED):

Ongoing

ESTIMATED COST:

ENTIRE PROJECT:

\$ 105,000,000 (Estimated)

WORK FOR WHICH FIRM WAS RESPONSIBLE:

\$ 5,088,789 (GEC Fees)

## TEC PROFESSIONAL SERVICES QUESTIONNAIRE

**L. WORK BY FIRM OR JOINT-VENTURE MEMBERS WHICH BEST ILLUSTRATES CURRENT QUALIFICATIONS RELEVANT TO THIS PROJECT. PLEASE INCLUDE ANY AND ALL WORK PERFORMED FOR JEFFERSON PARISH. PLEASE ATTACH ADDITIONAL PAGES IF NECESSARY.**

PROJECT NO. 9

PROJECT NAME, LOCATION AND  
OWNER'S CONTACT  
INFORMATION:

**I-10: LA 415 TO ESSEN  
LANE ON I-10 AND I-12**  
Baton Rouge, Louisiana

*Client: LADOTD, Nicholas  
Olivier, 225-379-1133*

NATURE OF FIRM'S RESPONSIBILITY:

GEC is providing engineering services as a subconsultant, including right-of-way corridor preservation milestone plan preparation for the corridor from the College Drive east ramp terminals to the I-10/I-12 interchange area. GEC is assisting the Prime with project transition and data transfer, document control, meetings and coordination, project tracking, initial financial plan, Project Management Plan (PMP), and Project Implementation Plan (PIP).

Segment 1 of the I-10 CMAR project will incorporate aesthetic lighting to convert the City Park Lake Bridge into an iconic structure, and emphasize the Greenway path from Expressway Park to the bridge. GEC completed an enhancement lighting study for the corridor including a preliminary cost estimation for the installation of enhancement lighting for this segment of the project.



COMPLETION DATE (ACTUAL OR  
ESTIMATED):

Ongoing

ESTIMATED COST:

ENTIRE PROJECT:

Unknown

WORK FOR WHICH FIRM WAS RESPONSIBLE:

\$ 3,200,000 (Est. GEC Fees)

## TEC PROFESSIONAL SERVICES QUESTIONNAIRE

### L. WORK BY FIRM OR JOINT-VENTURE MEMBERS WHICH BEST ILLUSTRATES CURRENT QUALIFICATIONS RELEVANT TO THIS PROJECT. PLEASE INCLUDE ANY AND ALL WORK PERFORMED FOR JEFFERSON PARISH. PLEASE ATTACH ADDITIONAL PAGES IF NECESSARY.

PROJECT NO. 10

PROJECT NAME, LOCATION AND OWNER'S CONTACT INFORMATION:

**LASAFE AIRLINE AND MAIN COMPLETE STREETS**

Laplace, Louisiana

*Client: St. John the Baptist Parish, Rene Pastorek, 985-651-5565*

NATURE OF FIRM'S RESPONSIBILITY:

GEC was selected to provide all necessary engineering design for the Airline and Main Complete Streets project, a resilient infrastructure and community nonstructural mitigation/flood risk reduction project in LaPlace. The scope of services range from civil engineering design, environmental engineering, traffic engineering, topographic survey in accordance with LADOTD standards, geotechnical investigation, and landscaping services (green infrastructure component along the drainage ditches and proposed median). Funding for this project was secured through the National Disaster Resilience Competition (NDRC), sponsored by the U.S. Department of Housing and Urban Development (HUD) for LA SAFE – Louisiana's Strategic Adaptations for Future Environments.

For the project, GEC developed typical sections and preliminary layout for the project, which consists of a 10' shared use path, 5' sidewalk along the north side of US 90, bike lanes on shoulder, and softening of the median. Existing ditches will have pipes added and be reshaped to provide detention ponds to reduce time of concentration. Along Main St., GEC is providing parallel parking utilizing decorative brick and permeable base to reduce time of concentration. GEC engineers calculated preliminary quantities and developed a preliminary estimated construction cost. The final engineering plans and specifications have been completed. Additionally, staff developed fee for all costs from surveying to construction. GEC performed the design and illumination of the shared use path along Airline Highway that will connect to Main Street and will accommodate pedestrians and bicyclists. GEC provided additional illumination design for the parking area of St. John Parish Utilities building, located at the intersection of Main Street and Airline Highway. The project is currently under construction.



COMPLETION DATE (ACTUAL OR ESTIMATED):

Ongoing

ESTIMATED COST:

ENTIRE PROJECT:

\$ 4,800,000 (Estimated)

WORK FOR WHICH FIRM WAS RESPONSIBLE:

\$ 1,160,000 (GEC Fees)

## TEC PROFESSIONAL SERVICES QUESTIONNAIRE

### M. LIST ALL PRIOR AND/OR ON-GOING LITIGATION BETWEEN FIRM AND JEFFERSON PARISH. PLEASE ATTACH ADDITIONAL PAGES IF NECESSARY.

PARTIES:		STATUS/RESULT OF CASE:
PLAINTIFF:	DEFENDANT:	
1. N/A		
2.		
3.		
4.		

### N. USE THIS SPACE TO PROVIDE ANY ADDITIONAL INFORMATION OR DESCRIPTION OF RESOURCES SUPPORTING FIRM'S QUALIFICATIONS FOR THE PROPOSED PROJECT.

## Electrical Engineering Services for Street Lighting Projects

### STATEMENT OF QUALIFICATIONS

G.E.C., Inc. (GEC) appreciates the opportunity to offer Jefferson Parish a highly capable and experienced professional team to provide electrical engineering services for miscellaneous street lighting projects and other electrical related work throughout Jefferson Parish.

Since 1986, GEC has grown into a firm offering project management and comprehensive, multidisciplinary project planning, design, and implementation services for public and private clients nationwide. The diverse resources of the company include project management, design and construction engineering, economic analysis, environmental & ecological sciences, and GIS applications. We are committed to providing engineering services to the Parish on time and within budget to effectively accomplish the goals of this project. Our staff includes licensed professional engineers with national prominence to provide professional engineering services. GEC supports municipalities and local governments in the planning, design, and rehabilitation of infrastructure and other public facilities systems vital to enhance the quality of life of residents of Jefferson Parish.

***We have thoroughly reviewed the solicitation and feel confident GEC has the broad experience and full array of personnel necessary to complete all services described in the Request for Qualifications.***

### FIRM OVERVIEW

GEC has maintained an office in Jefferson Parish on Causeway Blvd. in Metairie since 2008.

Through the acquisition of Krebs, LaSalle, LeMieux Consultants, Inc. (KLL) in 2011, GEC has had a presence in Jefferson Parish since 1967.

Established in 1986 in Baton Rouge, GEC is a shareholder-owned corporation with additional offices in California and Florida and over 100 employees providing civil, electrical, mechanical, construction, environmental, and coastal engineering, planning, inspection, and more.

### O. TO THE BEST OF MY KNOWLEDGE, THE FOREGOING IS AN ACCURATE STATEMENT OF FACTS.

SIGNATURE:   
 TITLE: Executive Vice President

PRINT NAME: Sherri LeBas, PE  
 DATE: July 15, 2022



## Minimum Requirements for Selection

### ROUTINE ENGINEERING SERVICES

**GEC has the local, state and regional experience to meet the needs of the Parish for task orders arising from this as-needed contract. Our firm exceeds all minimum requirements for selection as demonstrated by our numbered responses below.**

THE PERSON OR FIRM SUBMITTING A STATEMENT OF QUALIFICATIONS SHALL HAVE THE FOLLOWING MINIMUM QUALIFICATIONS:

1. ONE (1) PRINCIPAL WHO IS A LICENSED, REGISTERED PROFESSIONAL ENGINEER IN THE STATE OF LOUISIANA

Sherri LeBas joined GEC after 30.5 years in state service in Louisiana. Her work experience includes the Louisiana Department of Transportation and Development (LADOTD) as well as the Louisiana State Division of Administration, Facility Planning and Control. Ms. LeBas spent the last 6 years of her state career as Secretary of LADOTD from 2010 to 2016 and understands the components of the successful delivery of projects including the management of the preconstruction phases and identification of funding sources and timing of the cash flow required. Currently, Ms. LeBas is Assistant Project Manager for the I-10 Widening CMAR Project in Baton Rouge. She is a licensed Civil and Environmental Professional Engineer in Louisiana.

2. A PROFESSIONAL IN CHARGE OF THE PROJECT WHO IS A PROFESSIONAL ELECTRICAL ENGINEER WHO SHALL BE REGISTERED AS SUCH IN LOUISIANA WITH A MINIMUM OF FIVE (5) YEARS' EXPERIENCE IN THE DISCIPLINES INVOLVED

Mickey Prattini's more than 18 years of electrical design experience includes lighting design and quality control, wastewater treatment facilities and lift stations, multiple pump motor installations in hazardous (classified) locations, generator installation projects, and multiple government (municipal and transportation) projects. Mr. Prattini is experienced with NFPA standards required by electrical projects and is capable of completing the design and project management related tasks required for this project. He has consistently managed client and stakeholder relations along with design challenges to produce quality deliverables in line with the project's delivery schedule.

3. ONE EMPLOYEE WHO IS A PROFESSIONAL ENGINEER REGISTERED AS SUCH IN LOUISIANA IN THE FIELD OR FIELDS OF EXPERTISE REQUIRED FOR THE PROJECT

STAFF NAME	YEARS OF EXPERIENCE	LICENSE NO. (DISCIPLINE)
Mickey Prattini Jr., PE	18	LA PE No. 35993 (Electrical)
Sherri LeBas, PE	36	LA PE No. 23844 (Civil/Environmental)
Cary Bourgeois, PE	37	LA PE No. 23414 (Civil)
Michael Chiasson, PE	45	LA PE No. 17978 (Electrical)
Tom Coerver Jr., PE	38	LA PE No. 30722 (Electrical)

## Professional Qualifications

PROFESSIONAL ELECTRICAL ENGINEERING SERVICES FOR MISCELLANEOUS STREET LIGHTING PROJECTS AND OTHER ELECTRICAL RELATED WORK THROUGHOUT JEFFERSON PARISH

### EVALUATION CRITERIA

1) PROFESSIONAL TRAINING AND EXPERIENCE IN RELATION TO THE TYPE OF WORK REQUIRED FOR ELECTRICAL ENGINEERING SERVICES - 35 POINTS

GEC's electrical engineers have the knowledge and extensive experience with the design and implementation of a wide array of roadway lighting systems, electrical distribution systems, emergency power systems, control systems, fuel storage, conditioning and distribution systems, drainage and wastewater pumping stations, and flood control systems. They have designed and implemented these systems for both state and local governments. Our electrical engineering staff has in-depth understanding of national and local codes, industry standards, and best practices. Their varied expertise is adapted and applied to each project, resulting in optimal design and implementation. This equips GEC to provide the range of services required to accomplish any project to satisfy the needs of the Parish.

GEC has proven capability in design, construction, and commissioning of field devices for ITS including CCTV cameras, dynamic message signs, dynamic speed limit signs, vehicle detection, communication hub sites, control software, and fiber optic, copper, and wireless communications systems.

#### ELECTRICAL PROJECTS



**Mickey Prattini JR., PE**  
Professional-in-Charge



**Sherri Lebas, PE**  
Principal-in-Charge



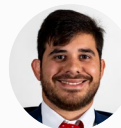
**Cary Bourgeois, PE**  
QA/QC



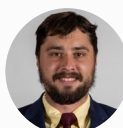
**Michael Chiasson, PE**  
Electrical Engineer



**Tom Coerver JR., PE**  
Electrical Engineer



**Luis Diaz, EI**  
Electrical Engineer Intern



**Nicholas Montegut**  
Electrical Designer



**Bowman Guttner**  
Electrical Inspector



## EVALUATION CRITERIA

2) CAPACITY FOR TIMELY COMPLETION OF NEWLY ASSIGNED WORK, CONSIDERING THE FACTORS OF CURRENT UNFINISHED WORKLOAD, AND PERSON OR FIRM'S AVAILABLE PROFESSIONAL AND SUPPORT PERSONNEL - 20 POINTS

For over 36 years, GEC has had an exemplary reputation for on-schedule work. Our large staff of professionals (both here and elsewhere in the region) gives us the flexibility needed to meet challenging deadlines. In selecting GEC, Jefferson Parish opts for a firm with a proven record of delivering projects on schedule. Current Jefferson Parish projects, Harvey WWTP Switchgear is in the design phase and Ames Blvd Decorative Street Lighting Improvements is in final design. GEC has ample resources in our electrical department to start new projects as assigned by the Parish under this retainer.

GEC consistently completes project tasks in a time commensurate with a task's complexity. As part of the Louisiana TIMED Management (LTM) Joint Venture, GEC was a key contributor in accelerating the turnkey delivery of more than 260 miles of new highway construction from a 30-year schedule to 10 years, and then further accelerating the 10-year schedule to 8 years. Our staff utilizes various methods to manage multiple large projects simultaneously and meet deadlines under an aggressive schedule. Some of the various ways we perform this task include using a team approach, coordinating tasks between offices, relying on our knowledge of Local, State and Federal Regulations, employing staff that is proficient in multiple fields and following a company-wide a Quality Control/Quality Assurance plan.

3) LOCATION OF THE PRINCIPAL OFFICE - 15 POINTS

GEC has maintained a permanent office in Jefferson Parish since 2008 located at 3445 N. Causeway Blvd. in Metairie, Louisiana, allowing us access to all of Jefferson Parish. Any staff utilized outside of our Metairie office will coordinate directly with Metairie staff as has been done on several previous projects.

GEC's network infrastructure incorporates a decentralized wide area network spanning multiple offices and support for employees telecommuting or working in remote locations. All sites are interconnected using secured tunnels that are encrypted and deploy the most current technologies for deep packet inspection methods which scan and filter malicious packets.

All network nodes are monitored and can be accessed remotely to provide end user support when necessary. The integrity of the network is secured against the latest threats including malware and ransomware utilizing a multi-layered security strategy alongside multi-backup and off-site storage for critical data and applications. This ensures no delay in communication between office locations so that all employees can coordinate seamlessly on projects.

4) ADVERSARIAL LEGAL PROCEEDINGS BETWEEN THE PARISH AND THE PERSON OR FIRM PERFORMING PROFESSIONAL SERVICES - 15 POINTS

There are no current nor any prior adversarial legal proceedings between Jefferson Parish and GEC. In addition, GEC has never had a claim against it by Jefferson Parish or any other client for unsatisfactory work. GEC has never been disqualified or disbarred by any public agency from public contracts. There are neither past nor pending litigation or claims that would affect GEC's performance of this contract.

## EVALUATION CRITERIA

5) PRIOR SUCCESSFUL COMPLETION OF PROJECTS REQUIRING ELECTRICAL ENGINEERING SERVICES FOR WHICH FIRM HAS PROVIDED VERIFIABLE REFERENCES - 15 POINTS

GEC has an excellent record of performance of engineering services contracts for various State, Local and Federal agencies. Our performances have produced professional consulting services on time and within budget without delays or controversy. We maintain an excellent reputation, and have performed similar work for Jefferson Parish in addition to many local agencies. We encourage the selection committee to contact references for all projects listed in Section L.

For Jefferson Parish, GEC designed decorative (LED) roadway luminaires on 1.3 miles of West Esplanade between Power Boulevard and St. Martin Street and 2 miles of West Napoleon between Michigan Ave. and Kent Avenue. Approximately 65 lights were used to illuminate the intersection at Power Boulevard and West Esplanade, five U-turns on West Esplanade, and seven U-turns on West Napoleon. GEC's design provides enhanced safety for pedestrians and vehicular traffic with uniform light levels in the transition from West Napoleon travel lanes to turn lanes while maintaining an aesthetically pleasing appearance.

“

[GEC] demonstrated excellent understanding of NEC, interstate lighting standards, and construction sequencing. Excellent quality of plans and deliverables. Met all deadlines even with compressed schedule and unexpected coordination with road and bridge projects.”

*Richard Foster, LADOTD*

6) SIZE OF FIRM, CONSIDERING THE NUMBER OF PROFESSIONAL AND SUPPORT PERSONNEL REQUIRED TO PERFORM ELECTRICAL ENGINEERING TASKS, INCLUDING PROJECT EVALUATION, PROJECT DESIGN, DRAFTING OF TECHNICAL PLANS, DEVELOPMENT OF TECHNICAL SPECIFICATIONS, AND CONSTRUCTION ADMINISTRATION.— 10 POINTS.

GEC currently has ample staff available to work either full or part time on this project assigned by Jefferson Parish, from our Metairie office on Causeway Blvd. As shown in Section E of this proposal, our staff of over 100 includes professionals and support personnel. Many have advanced degrees with over 25 years of experience with sewer design throughout Louisiana.

## EVALUATION CRITERIA

7) PAST PERFORMANCE BY PERSON  
OR FIRM ON PARISH CONTRACTS -  
10 POINTS

GEC has managed hundreds of projects for Jefferson Parish with an excellent track record of previous work with the Parish. Our staff maintains valued working relationships with Parish staff, affording us the opportunity to provide ongoing services to the Parish.

### NOTABLE ELECTRICAL PROJECTS

- Airline Highway Lighting
- I-10 Widening: Williams to Veterans Lighting (DOTD)
- Loyola Westbound I-10 Off-Ramp Lighting revisions
- Modifications to F6-13 (Cleary & W Napoleon) Lift Station Improvements and New Effluent Force Main
- Elmwood Canal Lighting Improvements
- Decorative Roadway Lighting
- 13th and Farrington Lift Station Improvements

---

*We appreciate the Selection Committee's review of our extensive qualifications and look forward to the opportunity to work with Jefferson Parish on this contract.*

**The Louisiana Professional Engineering and Land Surveying Board has the following information on file:**

Name:	Public Address:
G. E. C., Inc.	Mr. Jim Mitchell
	8282 Goodwood Boulevard
	Baton Rouge,LA 70806

**License/Certificate Information w/ Supervision**

License	Status	First Issuance Date	Expiration Date	Supervisor(s)
EF.0001917	ACTIVE	11/15/1994	03/31/2023	Mr. Cary Allen Bourgeois # PE.0023414 - Active
				Ms. Sherri Hammond LeBas # PE.0023844 - Active