



6/26/2018

Shreveport Office: 6913 Westport Ave, Shreveport, LA 71129
318-221-1372 Office * 318-221-1375 Fax
East Texas Sales 903-215-8604 Office * 877-986-8472 Fax

www.GEMPumpsandSystems.com

SEWERAGE WAREHOUSE - EB
4901 JEFFERSON HWY
SUITE C
JEFFERSON, LA 70121

Estimate # 4362
Valid Until 7/26/2018
Lead Time 1-2 WEEKS ARO
Terms NET 30

Requested By BID # 50-00123510

Rep AB

Qty	Product Information	Each Net	Total
30	SULZER SCAVENGER PUMP 2" NPT VERTICAL DISCHARGE 4/10HP, 115V, 1P, 3450RPM, 20' CABLE, 3/4" SOLIDS HANDLING, VORTEX IMPELLER AUTOMATIC (WITH FLOAT) 34# EACH	318.92	9,567.60
PRICE INCLUDES FREIGHT DELIVERED TO JEFFERSON PARISH DIRECT FROM THE FACTORY			

WE LOOK FORWARD TO YOUR BUSINESS.

Subtotal \$9,567.60
Sales Tax (0.0%) \$0.00
Total \$9,567.60

DATE: 6/22/2018

INVITATION TO BID
THIS IS NOT AN ORDER

Page: 4

BID NO.: 50-00123510

JEFFERSON PARISH

PURCHASING DEPARTMENT
P.O. BOX 9
GRETNA, LA. 70054-0009
504-364-2678VENDOR: GEM Electric, LLC

BUYER: SFOLSE

As per LSA-RS 47:301 et seq., all governmental bodies are excluded from payment of sales taxes to any Louisiana taxing body. Quotations shall be based on F.O.B. Agency warehouse or jobsite, anywhere within the Parish as designated by the Purchasing Department.

JEFFERSON PARISH reserves the right to cancel all or any part of an order if not shipped promptly. No charges will be allowed for parking or cartage unless specified in quotation. The order must not be filled at a higher price than quoted. JEFFERSON PARISH reserves the right to cancel at any time and for any reason by issuing a THIRTY (30) day written notice to the contractor.

JEFFERSON PARISH is expecting all products to be new and all work to be done in workman-like manner, according to standard practices. Any deviations or alteration from the specifications must be indicated on the bid form for each item and upon request, product data for same must be submitted by the time specified by the Purchasing Department.

DELIVERY: FOB JEFFERSON PARISH

INDICATE DELIVERY DATE ON EQUIPMENT AND SUPPLIES _____

INDICATE STARTING TIME (IN DAYS) FOR CONSTRUCTION WORK _____

INDICATE COMPLETION TIME (IN DAYS) FOR CONSTRUCTION WORK _____

In the event that addenda are issued with this bid, bidders MUST acknowledge all addenda on the bid form. Bidder must acknowledge receipt of an addendum on the bid form as indicated. Failure to acknowledge any addendum on the bid form will result in bid rejection.

Acknowledge Receipt of Addenda: NUMBER: _____

NUMBER: _____

NUMBER: _____

NUMBER: _____

LOUISIANA CONTRACTOR'S LICENSE NO.: (if applicable) _____

*** ALL BIDDERS MUST COMPLETE SECTION BELOW ***

FIRM NAME:

GEM Electric, LLC

SIGNATURE:

(Must be signed here)

Angela Burch

TITLE:

Sales/Executive Assistant

PRINT OR TYPE NAME:

Angela Burch

ADDRESS:

6913 Westport Ave(New address)

CITY, STATE:

Shreveport, LA

ZIP:

71129

TELEPHONE:

(318) 221-1372

FAX:

(318) 221-1375

EMAIL ADDRESS:

aburch@gempumpsandsystems.com

INVITATION TO BID FROM JEFFERSON PARISH - continued

BID NO.: 50-00123510

SEALED BID

ITEM NUMBER	QUANTITY	U/M	DESCRIPTION OF ARTICLES	UNIT PRICE QUOTED	TOTALS
1	30.00	EA	ONE TIME PURCHASE OF SUMP PUMPS FOR THE JEFFERSON PARISH WB SEWERAGE WAREHOUSE 0010 - PUMP, SUMP, 4/10 HORSEPOWER, 1-1/2 IN. DISCHARGE, AUTOMATIC, CAPACITY TO 80 GPM, 32 FT. SHUT OFF HEAD, 20 FT. CORD, CAST IRON BODY, MYERS MODEL NO. ME40PC-1 SK NUMBER 00-0570710 <u>Equivalent Is Quoted</u> ABS Sulzer Scavenger Pump 2" NPT Discharge 4/10 HP, 1Ø, 3450 RPM, 20' Cable, 3/4" Solids handling, 40' dead head, Cast Iron Body with piggyback float	<u>\$318⁹²</u>	<u>\$9,567⁶⁰</u>



ABS SCAVENGER® SUBMERSIBLE EFFLUENT AND SEWAGE EJECTOR PUMPS

60 Hz

Rugged Submersible pumps for residential and commercial applications.

ABS submersible pumps series Scavenger are suitable for two main applications:

- Effluent Models - used for both low and high pressure dosing systems and light duty industrial sumps.
- Ejector Models - used for septic tanks and sewage systems, light agricultural usage and residential, industrial commercial light trash handling.

1/3, 4/10 & 1/2 HP

- High torque capacitor motors.
- 2" NTP vertical discharge, vortex impellers
- Rugged cast iron housing
- Stainless steel fasteners and motor shaft
- Oil filled motors (non-toxic oil)
- Integrated clip for float switch cable
- Available with or without ABS piggyback float switch



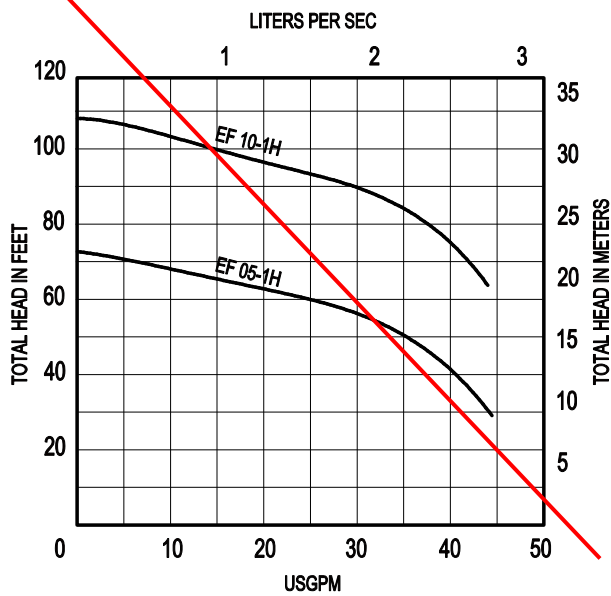
3/4 HP & above

- Unique triple seal design
- ABS Patented ContraBlock® impeller with adjustable wear plate system, for clog-free operation
- Single phase models through 5HP, Three phase models through 10HP
- Discharges, 1 1/4 to 4"
- Oil filled motors (non-toxic oil)
- High torque capacitor start single phase motors
- Rugged cast iron construction with stainless steel fasteners and motor shaft

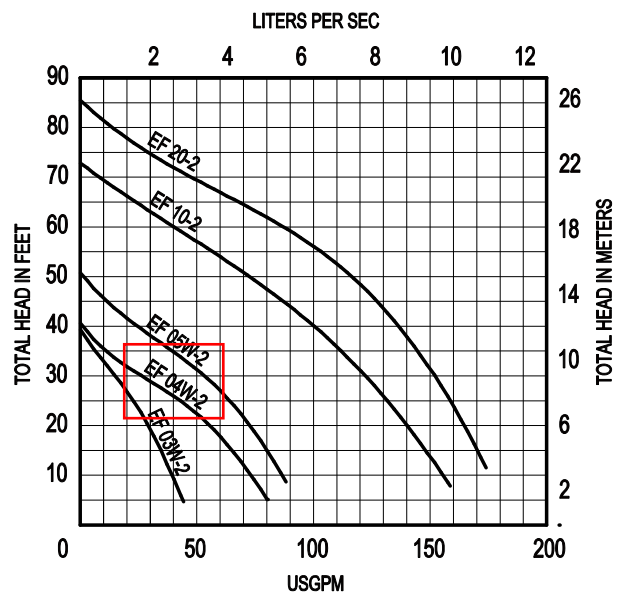


ABS SCAVENGER® SUBMERSIBLE EFFLUENT AND SEWAGE EJECTOR PUMPS

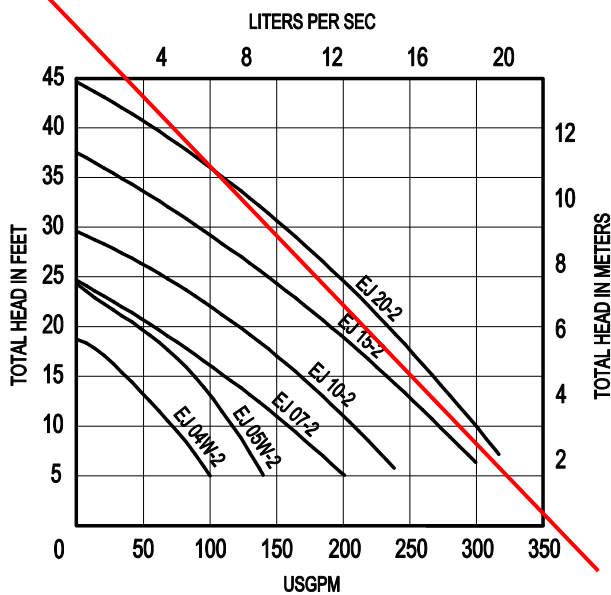
Effluent Pumps 1 1/4 Inch



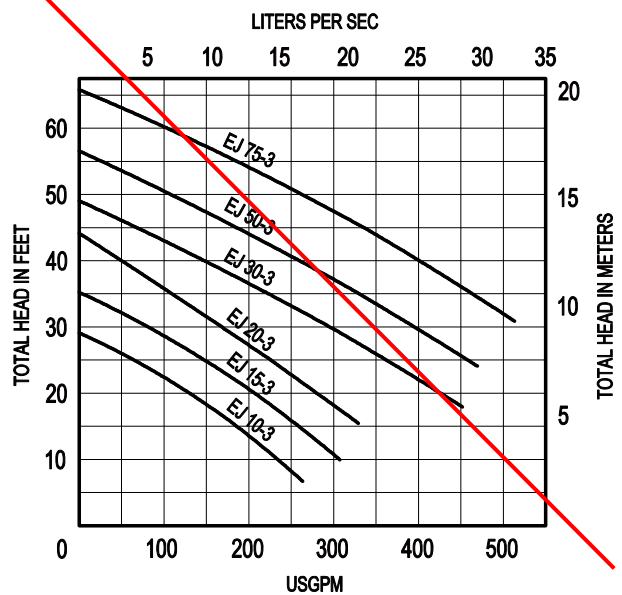
Effluent Pumps 2 Inch



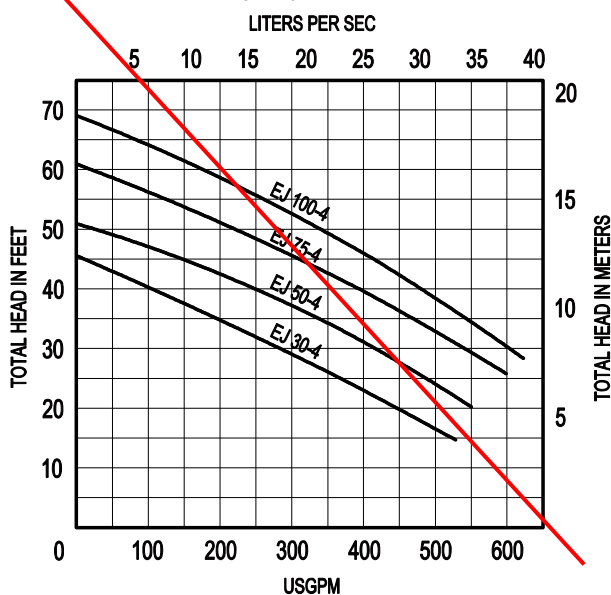
Sewage Ejectors 2 Inch



Sewage Ejectors 3 Inch



Sewage Ejectors 4 Inch



Notes

- Single phase pumps from 0.3 HP through 2 HP have capacitor and thermal protection built in the pump.
- Single phase pumps from 3 HP through 5 HP require an external capacitor start box or control panel, with overload protection.
- All three phase pumps require a control panel with overload protection.

Limitations

- Maximum ambient temperature: +40°C (104°F).
- Maximum submergence depth: 66ft (20m).

ABS SCAVENGER® SUBMERSIBLE EFFLUENT AND SEWAGE EJECTOR PUMPS

Effluent Pumps

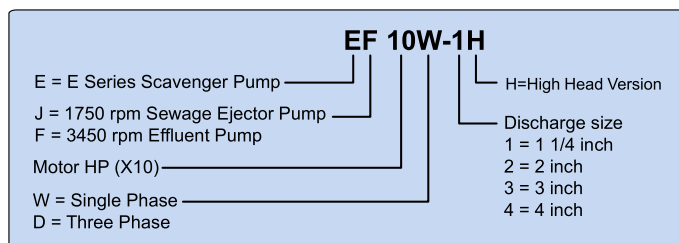
Model	HP	Phase	RPM	Voltage	Amps	Discharge	Solids Size	Max Head (feet)	Max Flow (gpm)	Weight (Lbs.)
EF 03W	0.3	1	3450	115	7.2	2"NPT Vertical	3/4"	37	40	21.6
EF 04W	0.4	1	3450	115	9.1	2"NPT Vertical	5/8"	40	80	28.6
EF 05W	0.5	1	3450	115/208-230	13.2/6.6	2"NPT Vertical	5/8"	50	88	35.8
EF 05W-1H	0.5	1	3450	115/208-230	15/7.5	1 1/4" Horiz. NPT	5/8"	73	44	68
EF 10W-1H	1	1	3450	208-230	13	1 1/4" Horiz. NPT	5/8"	108	44	70
EF 10W-2	1	1	3450	208-230	13	2"NPT Vertical	3/4"	73	160	72
EF 10D-2	1	3	3450	208-230/460,575	5.8/2.9,2.3	2"NPT Vertical	3/4"	73	160	57
EF 20D-2	2	3	3450	208-230/460,575	7.6/3.8,3.0	2"NPT Vertical	3/4"	85	175	68

Sewage Pumps

Model	HP	Phase	RPM	Voltage	Amps	Discharge	Solids Size	Max Head (feet)	Max Flow (gpm)	Weight (Lbs.)
EJ 04W	0.4	1	1750	115	6.6	2"NPT Vertical	2"	18	100	31.9
EJ 05W	0.5	1	1750	115/208-230	10.6/4.9	2"NPT Vertical	2"	24	140	35.2
EJ 07W	0.7	1	1750	115/208-230	13.8/6.9	2"Horiz. Flange*	2"	24	200	77
EJ 07D	0.7	3	1750	208-230/460,575	5.0/2.5,2.0	2"Horiz. Flange*	2"	24	200	70
EJ 10W-2	1	1	1750	208-230	10	2"Horiz. Flange*	2"	30	240	77
EJ 10D-2	1	3	1750	208-230/460,575	5.0/2.5,2.0	2"Horiz. Flange*	2"	30	240	70
EJ 15W-2	1.5	1	1750	208-230	15	2"Horiz. Flange*	2"	37	300	90
EJ 15D-2	1.5	3	1750	208-230/460,575	7.0/3.5,2.8	2"Horiz. Flange*	2"	37	300	84
EJ 10W-3	1	1	1750	208-230	10	3"Horiz. Flange	2 1/2"	30	265	77
EJ 10D-3	1	3	1750	208-230/460,575	5.0/2.5,2.0	3"Horiz. Flange	2 1/2"	30	265	70
EJ 15W-3	1.5	1	1750	208-230	15	3"Horiz. Flange	2 1/2"	35	300	90
EJ 15D-3	1.5	3	1750	208-230/460,575	7.0/3.5,2.8	3"Horiz. Flange	2 1/2"	35	300	84
EJ 20W-2	2	1	1750	208-230	19.0	2"Horiz. Flange*	2"	45	320	90
EJ 20D-2	2	3	1750	208-230/460,575	9.0/4.5,3.6	2"Horiz. Flange*	2"	45	320	84
EJ 20W-3	2	1	1750	208-230	19	3"Horiz. Flange	2 1/2"	44	330	90
EJ 20D-3	2	3	1750	208-230/460,575	9.0/4.5,3.6	3"Horiz. Flange	2 1/2"	44	330	84
EJ 30W-3	3	1	1750	208-230	23.0	3"Horiz. Flange	2 1/2"	50	450	147
EJ 30D-3	3	3	1750	208-230/460,575	13.0/6.5,5.2	3"Horiz. Flange	2 1/2"	50	450	143
EJ 30W-4	3	1	1750	208-230	23.0	4"Horiz. Flange	3"	46	525	154
EJ 30D-4	3	3	1750	208-230/460,575	13.0/6.5,5.2	4"Horiz. Flange	3"	46	525	150
EJ 50W-3	5	1	1750	208-230	27.0	3"Horiz. Flange	2 1/2"	57	470	161
EJ 50D-3	5	3	1750	208-230/460,575	19.0/9.5,7.6	3"Horiz. Flange	2 1/2"	57	470	154
EJ 50W-4	5	1	1750	208-230	27.0	4"Horiz. Flange	3"	52	550	165
EJ 50D-4	5	3	1750	208-230/460,575	19.0/9.5,7.6	4"Horiz. Flange	3"	52	550	158
EJ 75D-3	7.5	3	1750	208-230/460,575	23.0/11.5,9.2	3"Horiz. Flange	2 1/2"	67	525	161
EJ 75D-4	7.5	3	1750	208-230/460,575	23.0/11.5,9.2	4"Horiz. Flange	3"	61	600	165
EJ 100D-4	10	3	1750	208-230/460,575	28.0/14.0,11.2	4"Horiz. Flange	3"	70	620	170

*includes elbow to convert to 2" Vertical NPT

Identification Code



Motor

Submersible single phase and three phase squirrel cage induction motors. Effluent pumps use 2 pole (3450 rpm) motors. Sewage ejector pumps use 4 pole (1750 rpm) motors.

Voltage: 115 and 208-230 V for single phase, 208-230, 460 or 575 V for three phase.

Insulation class B or F depending on the model.

Protection type IP68.

Materials of construction

Motor	Standard
Seal chamber	Cast iron ASTM A-48 Class 35B [GG 25]
Motor housing	Cast iron ASTM A-48 Class 35B [GG 25]
Motor shaft	Stainless steel AISI 420 [1.4021]
Fasteners (medium contact)	Stainless steel AISI 304 [1.4301]
Hydraulics	Standard
Volute	Cast iron ASTM A-48 Class 35B [GG 25]
Impeller	Cast iron ASTM A-48 Class 40 [GG 25], Polybutylene Terephthalate (PBT) with 30% of glass fiber on small pumps [EF 03/04/05 and EJ 04/05]
Bottom plate	Cast iron ASTM A-48 Class 35B [GG 25]
Pedestal	Cast iron ASTM A-48 Class 35B [GG 25]
Fasteners	Stainless steel AISI 304 [1.4301]

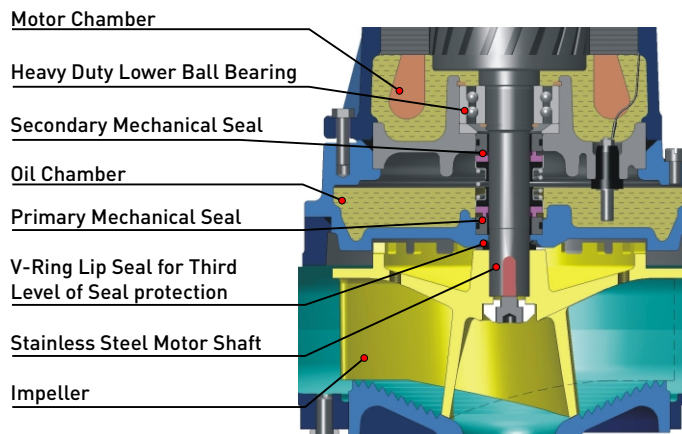
Standard and option

Description	Standard	Option
Protection type	IP 68	-
Max. ambient temperature	40°C (104°F)	-
Main voltage	115, 208-230, 460 and 575V	-
Voltage tolerance	+/-10%	-
Insulation class	B or F depending on model	-
Approval	CSA(U)	-
Cables	SE00W, SJE00W, SJTOW	-
Cable length	20'	On request
Mechanical Seal	Double – Carbon/Ceramic	SiC/SiC

The Scavenger Triple Seal System

This ABS exclusive design provides three levels of sealing for outstanding reliability. A double mechanical seal located inside the oil chamber provides two full levels of sealing. An additional V-Ring type lip seal between the oil chamber and pump volute provides a third extra larger level of sealing, and enhanced mechanical seal protection.

****The Scavenger Triple Seal System is only available on scavengers 3/4 hp and above.**



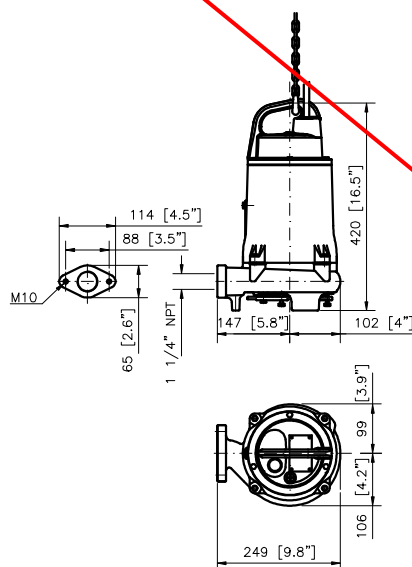
ABS Monitoring System

Scavenger 3HP - 10HP includes the ABS Monitoring System. This system provides normally closed thermal overload switched in the motor winding, and the ABS Seal minder moisture detection probe in the mechanical seal chamber. Wires for the sensors emerge from the pump in a separate control cable. These wires must be connected to the control panel for sensor operation (ABS Seal minder relay required in the panel for moisture detection alarm).

Effluent Pumps 1 1/4 Inch

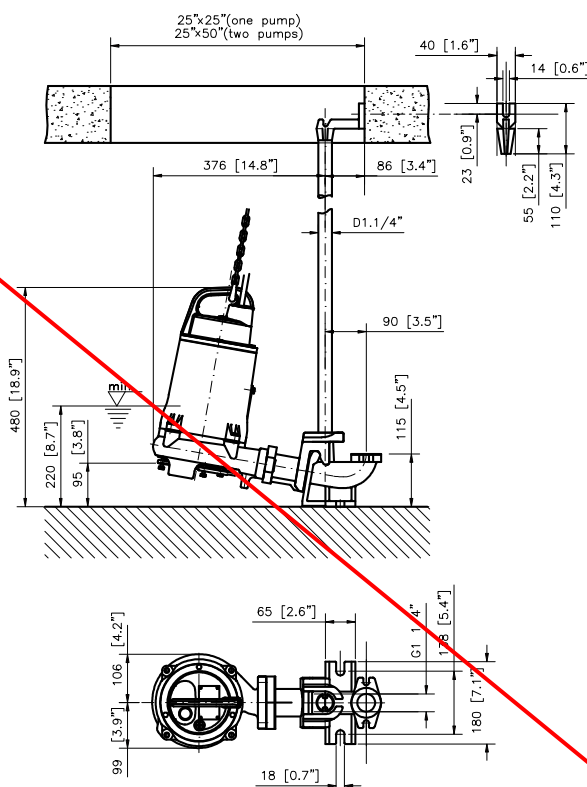
Transportable Installation

Type	Weight (lb)
EF 05W - 1H	68
EF 10W - 1H	68



Wet-well Installation

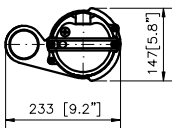
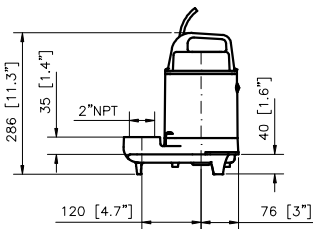
Type	Weight (lb)
EF 05W - 1H	68
EF 10W - 1H	68



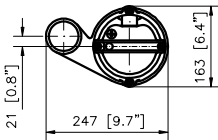
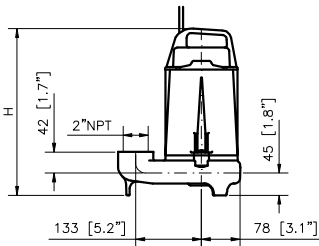
Effluent Pumps 2 Inch

Transportable Installation

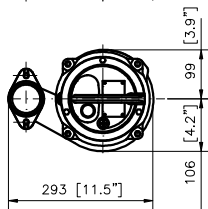
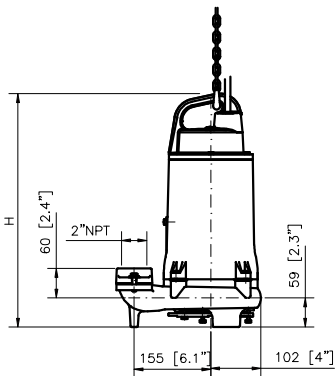
Type	Weight (lb)
EF 03W - 2	22



Type	Weight (lb)	H mm (in)
EF 04W - 2	28.6	312 (12.3")
EF 05W - 2	35.8	337 (13.3")



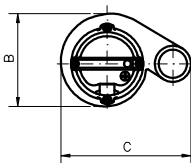
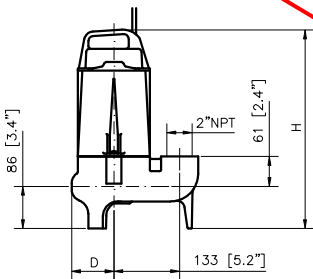
Type	Weight (lb)	H mm (in)
EF 10D - 2	57	401 (15.8")
EF 10W - 2	62	420 (16.5")
EF 10W - 2	68	464 (18.3")



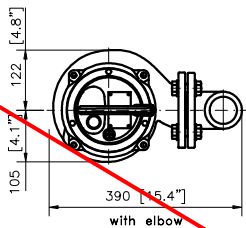
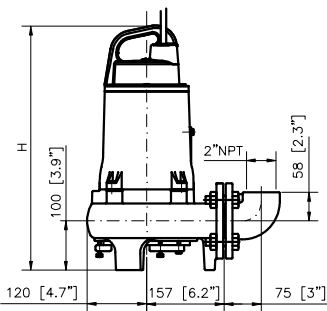
Sewage Ejectors 2 Inch

Transportable Installation

Type	Weight (lb)	H mm (in)	B mm (in)	C mm (in)	D mm (in)
EJ 04W - 2	31.9	277 (14.9")	170 (6.7")	251 (9.9")	80 (3.15")
EJ 05W - 2	35.2	402 (15.8")	187 (7.4")	263 (10.4")	94 (3.70")

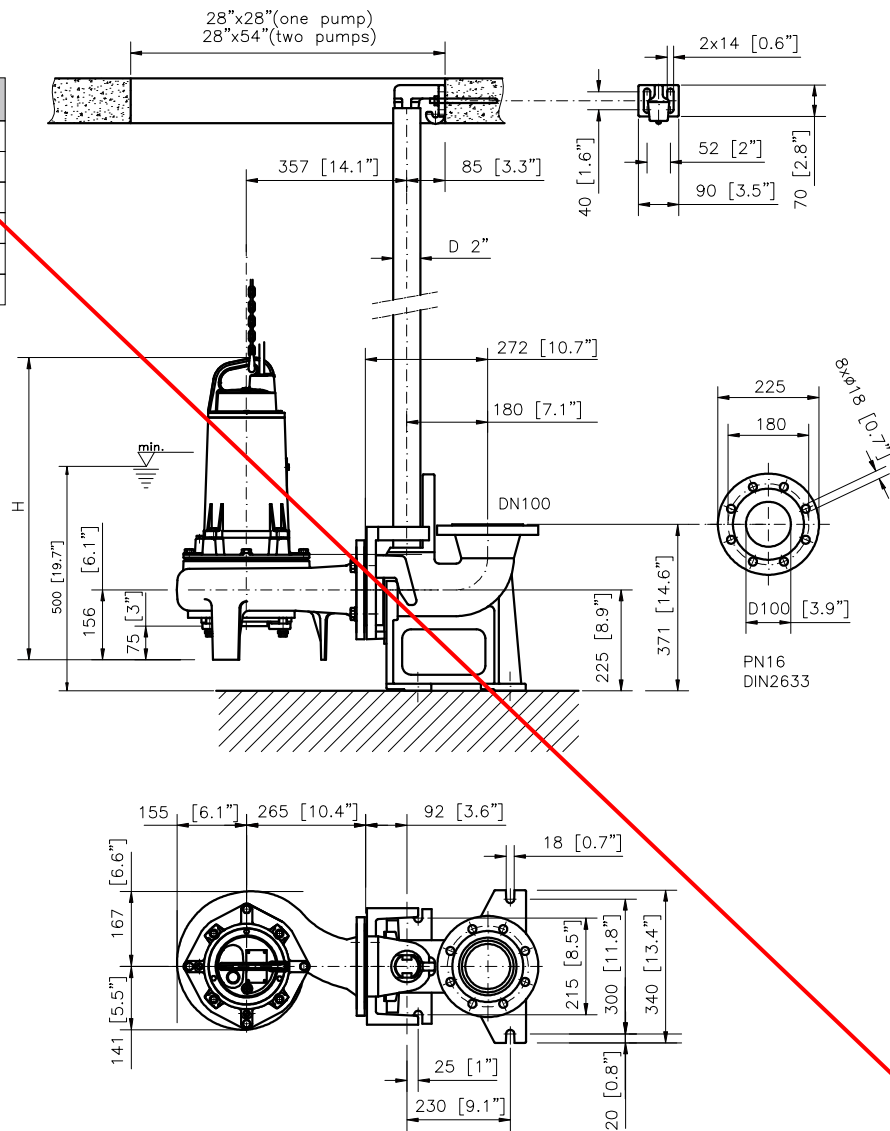


Type	Weight (lb)	H mm (in)
EJ 07W - 2	77	487 (19.3")
EJ 10W - 2	77	487 (19.3")
EJ 15W - 2	90	532 (21")
EJ 20W - 2	90	532 (21")
EJ 07D - 2	70.4	468 (18.4")
EJ 10D - 2	70.4	468 (18.4")
EJ 15D - 2	83.6	513 (20.2")
EJ 20D - 2	83.6	513 (20.2")



Wet-well Installation

Type	Weight (lb)	H mm (in)
EJ 30W - 4	154	685 (27")
EJ 50W - 4	165	685 (27")
EJ 30D - 4	149.6	685 (27")
EJ 50D - 4	158.4	685 (27")
EJ 75D - 4	165	685 (27")
EJ 100D - 4	165	685 (27")



Shreveport Office: 6913 Westport Ave, Shreveport, LA 71129
 318-221-1372 Office * 318-221-1375 Fax
 East Texas Sales 903-215-8604 Office * 877-986-8472 Fax

www.GEMPumpsandSystems.com



Corporate office:

ABS USA
 140 Pond View Drive
 Meriden, CT 06450
 Tel (203) 238-2700
 Fax (203) 238-0738

Regional offices:

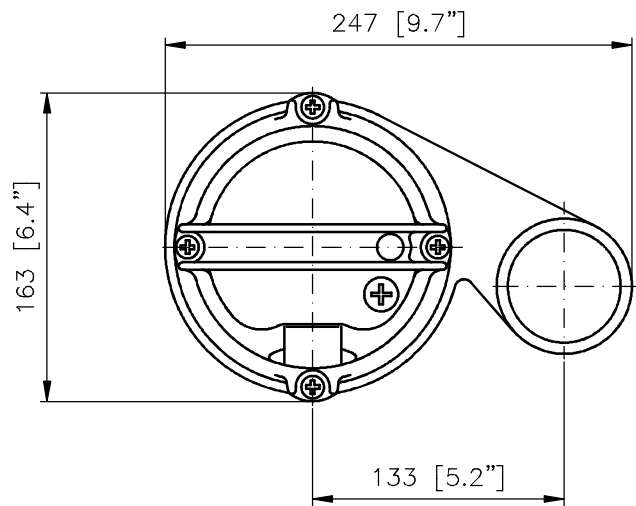
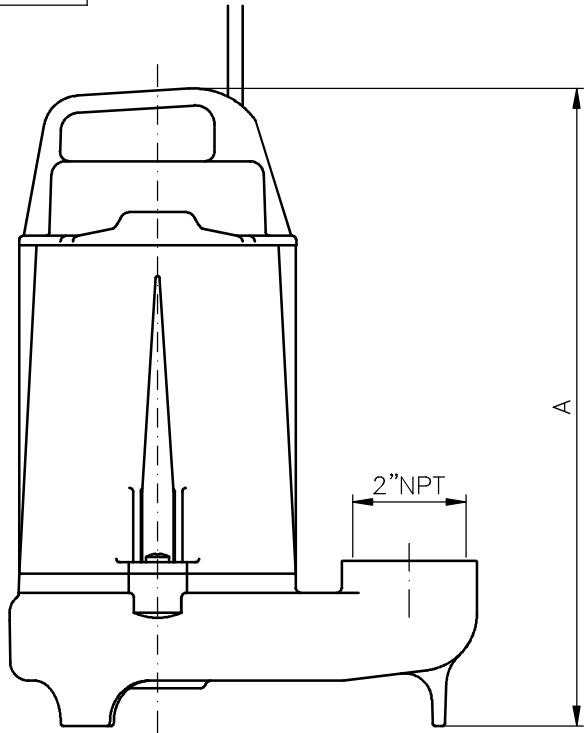
Southeast Region
 111 Maritime Drive
 Sanford, FL 32771
 Tel (407) 330-3456
 Fax (407) 330-3404

ABS Canada

1401 Meyerside Drive, Unit #2
 Mississauga, Ontario L5T 1 G8
 Tel (905) 670-4677
 Fax (905) 670-3709

Type	Weight		A
	w.cable		
EF 04W	28.6	lb	12.3 inch
	13	kg	312 mm
EF 05W	35.8	lb	13.3 inch
	16.3	kg	337 mm

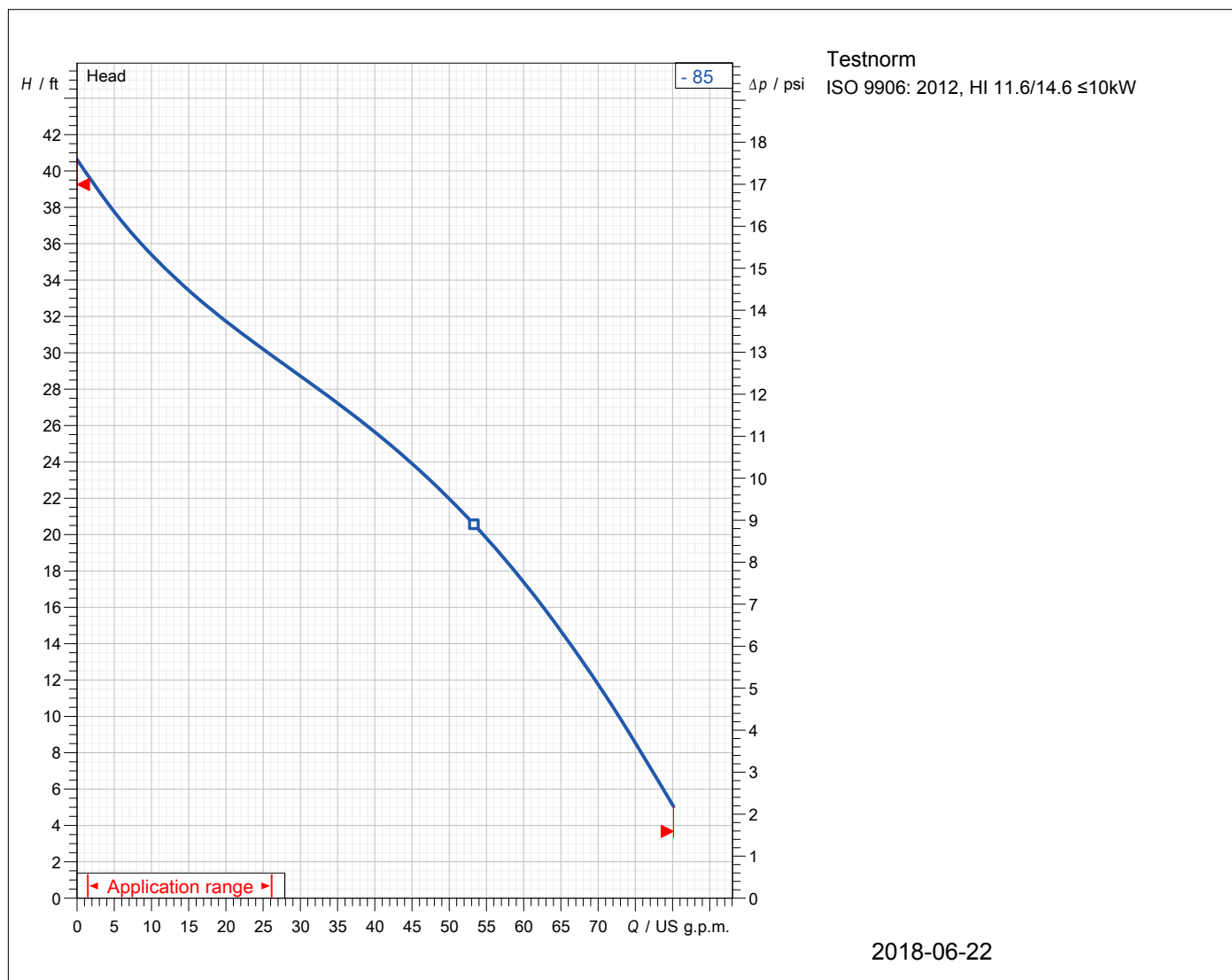
60 Hz



© Sulzer Pumps Ltd

<div>SULZER</div>	TÍTULO: title:	EF 04/05W	Alterações nos são reservadas Technical changes reserved	DATA: date:	03/03/2004	
	DESCRIÇÃO: Description:	DIMENSIONAL	Peso conf. folha de dados Weigth acc. Dim. sheet	EXECUTADO: made by:	ROR	
			UNIDADE: unit:	mm	ESCALA: scale:	S/E
			Nº / Rev.nº: F40-0054 / 01			

EF 04W-2 60HZ



Operating data specification Flow Efficiency NPSH Temperature 68 °F No. of pumps 1		Power input Head Shaft power Fluid Nature of system		Water
Pump data Type EF 04W-2 60HZ Series SCAVENGER "E" SERIES N° of vanes 6 Free passage 0,787 inch Discharge flange 2" Moment of inertia		Make Impeller Impeller size Suction flange Type of installation		SULZER Vortex impeller 3,35 inch Standard (PDF)
Motor data Rated voltage Rated power P2 Number of poles Power factor Starting current Starting torque Insulation class		Frequency Nominal Speed Efficiency Rated current Rated torque Degree of protection No. starts per hour		

