



CENTRALBIDDING
FROM CENTRAL AUCTION HOUSE

**5000140980-Williams Playlot & ADA Parking 7744 Mistletoe Street,
Metairie, La 70003 Project No 20-2142 Department of Recreation
Jefferson Parish Government**

Project documents obtained from www.CentralBidding.com

13-Mar-2023 09:07:54 PM

JEFFERSON PARISH DEPARTMENT OF PARKS AND RECREATION
BID PROPOSAL NO. 50-00140980
ADDENDUM #2
MARCH 8, 2023
PAGE 1 OF 15

CONTRACT DOCUMENTS, SPECIFICATIONS
AND
CONTRACT DRAWINGS

FOR
WILLIAMS PLAYLOT & ADA PARKING

JEFFERSON PARISH DEPARTMENT OF PARKS AND RECREATION
BID PROPOSAL NO. 50-00140980

ADDENDUM NO. 2

DATE ISSUED: **MARCH 8, 2023**

BID DATE: MARCH 14, 2023, AT 2:00 PM
BID OPENING LOCATION: Jefferson Parish General Government Building
Jefferson Parish Purchasing Dept., Suite 4400
200 Derbigny St., Gretna, LA 70053

This addendum shall be part of the Contract Documents as provided in the instructions to Bidders.

The following items are issued to add to, modify, and clarify the Contract Documents. These items shall have full force and effect as the Contract Documents, and the cost involved shall be included in the bid prices.

Acknowledge receipt of the addendum by inserting its number on the Bid Form of the Bid Documents. Failure to do so will subject the bidder to rejection.

Addendum No. 2 consists of 15 pages including all attachments.

ADDENDUM NO. 2

MARCH 8, 2023

WILLIAMS PLAYLOT & ADA PARKING

A/E PROJECT NO. 20-2142
PROPOSAL NO. 50-00140980

JEFFERSON PARISH
OWNER

MEYER ENGINEERS, LTD.
ENGINEER AND ARCHITECT

NOTICE TO BIDDERS:

This Addendum shall be considered part of the Contract Documents for the same above-mentioned project as though it had been issued at the same time and incorporated integrally therewith. Where provisions of the following supplementary data differ from those of the original Contract Documents, this Addendum shall govern and take precedence.

Bidders are hereby notified that they shall make any necessary adjustments in their estimates on account of this Addendum. It will be construed that each Bidder's proposal is submitted with full knowledge of all modifications and supplemental data specified herein.

- AD2.1 Project Manual, Section 00303, Louisiana Uniform Public Work Bid Form. Delete this section in its entirety and replace it with Section 00303, Louisiana Uniform Public Work Bid Form numbered AD2-4.
- AD2.2 Project Manual, Section 1030, Alternates. Add this section in its entirety numbered AD2-5.
- AD2.3 Project Manual, Section 16000, Electrical General Provisions. Add this section in its entirety numbered AD2-6 through AD2-9.
- AD2.4 Project Manual, Appendix A, Marquee Specifications. Add this section in its entirety numbered AD2-10 through AD2-12.
- AD2.5 Drawings, Sheet No. 4, Demolition Plan. Delete this sheet in its entirety and replace it with Sheet No. 4, Demolition Plan numbered AD2-13.
- AD2.6 Drawings, Sheet No. 5, Site Plan. Delete this sheet in its entirety and replace it with Sheet No. 5, Site Plan numbered AD2-14.
- AD2.7 Drawings, Sheet No. 6, Playground Equipment Plan. Delete this sheet in its entirety and replace it with Sheet No. 6, Playground Equipment Plan numbered AD2-15.

Q. I noticed that on the plans you require us to meet the grade of the existing sidewalk outside of the gym door, however if you look at the state of the existing sidewalk it is cracked and has several dips in it. Would it be possible to remove the existing sidewalk and bring the playground slab all the way to the building? It would add approx. 500 sq ft and give a better finish then just tying in to the existing sidewalk.

A. ***Revisions were made to the plan sheets attached to this Addendum.***

Q. In regards to the pour in place rubber surfacing are you looking to have it gradually sloped up from the edge around the entire playground so as to not have a tripping hazard or are you wanting the slab set lower in the ground as to allow for a smooth transition from the sidewalk to the playground?

A. ***Revisions were made to the plan sheets attached to this Addendum.***

Q. Will we be raising the existing drains to meet the new grade should they call for it?

A. ***Revisions were made to the plan sheets attached to this Addendum.***

Q. The rollers on this current gate design sit in a channel, there's no call for a drain in the plans so that's just going to be holding water causing extra wear on the rollers as well as a tripping hazard. Would you all be open to put a gate on a rail in place of the current design?

A. ***Yes***

Q. Is there a grade beam along the edge of the playground?

A. ***Yes***

* * *

LOUISIANA UNIFORM PUBLIC WORK BID FORM

TO: JEFFERSON PARISH PURCHASING
200 DERBIGNY STREET, SUITE 4400
GRETN, LA 70053

(Owner to provide name and address of owner)

BID FOR: WILLIAMS PLAYLOT & ADA PARKING
BID NO. 50-00140980
A/E PROJECT NO. 20-2142
ADDENDUM NO. 2

(Owner to provide name of project and other identifying information)

The undersigned bidder hereby declares and represents that she/he: a) has carefully examined and understands the Bidding Documents, b) has not received, relied on, or based his bid on any verbal instructions contrary to the Bidding Documents or any addenda, c) has personally inspected and is familiar with the project site, and hereby proposes to provide all labor, materials, tools, appliances and facilities as required to perform, in a workmanlike manner, all work and services for the construction and completion of the referenced project, all in strict accordance with the Bidding Documents prepared by: MEYER ENGINEERS, LTD. and dated: NOVEMBER 14, 2022.

(Owner to provide name of entity preparing bidding documents.)

Bidders must acknowledge all addenda. The Bidder acknowledges receipt of the following **ADDENDA:** (Enter the number the Designer has assigned to each of the addenda that the Bidder is acknowledging) Addendum 1 and Addendum 2. All addendums.

TOTAL BASE BID: For all work required by the Bidding Documents (including any and all unit prices designated "Base Bid" * but not alternates) the sum of:

Three Hundred and Fifty Four Thousand, Four Hundred and Twelve Dollars and Eight Cents Dollars (\$ 354,412.08)

ALTERNATES: For any and all work required by the Bidding Documents for Alternates including any and all unit prices designated as alternates in the unit price description.

Additive Alternate No. 1: Marquee Sign for the lump sum of:

Forty Five Thousand and Eight Dollars and Nine Cents Dollars (\$ 45,008.09)

Alternate No. 2 (Owner to provide description of alternate and state whether add or deduct) for the lump sum of:

N/A Dollars (\$)

Alternate No. 3 (Owner to provide description of alternate and state whether add or deduct) for the lump sum of:

N/A Dollars (\$)

NAME OF BIDDER: Garden Environments, INC. DBA Wolf Group Construction

ADDRESS OF BIDDER: 4433 Ligustrum Street Metairie, LA 70001

LOUISIANA CONTRACTOR'S LICENSE NUMBER: CL.59207

NAME OF AUTHORIZED SIGNATORY OF BIDDER: Ethan Vuljoin

TITLE OF AUTHORIZED SIGNATORY OF BIDDER: Owner

SIGNATURE OF AUTHORIZED SIGNATORY OF BIDDER **: 

DATE: 03/13/23

THE FOLLOWING ITEMS ARE TO BE INCLUDED WITH THE SUBMISSION OF THIS LOUISIANA UNIFORM PUBLIC WORK BID FORM:

* The Unit Price Form shall be used if the contract includes unit prices. Otherwise it is not required and need not be included with the form. The number of unit prices that may be included is not limited and additional sheets may be included if needed.

** **A CORPORATE RESOLUTION OR WRITTEN EVIDENCE** of the authority of the person signing the ~~form~~ for the public work as prescribed by LA R.S. 38:2212(B)(5).

BID SECURITY in the form of a bid bond, certified check or cashier's check as prescribed by LA R.S. 38:2218(A) attached to and made a part of this bid.

SECTION 01030: ALTERNATES

PART 1: GENERAL

1.1 Related Documents: The general provisions of the Contract, including the conditions of the Contract (General, Supplementary, and other Conditions, Division 0) and Division 1 as appropriate, apply to the Work specified in this Section.

1.2 General

- A. This Section describes the changes to be made under each alternate.
- B. Basis of Bid: Bidder must include all alternates shown on bid form; failure to comply may be cause for rejection. No segregated bids or assignments will be considered.
- C. The Specifications sections contain the pertinent requirements for material and methods to achieve the work described herein.
- D. Coordinate pertinent related Work and modify surrounding work as required to complete the project under each alternate designated in the Owner - Contractor Agreement.
- E. The stated sum of Alternates shall not change for a period of 45 days after Notice to Proceed and may be reinstated by Change Order for the Bid sum during this period.
- F. See Unit Prices affecting work of this Section.

1.3 Description of Alternates:

ALTERNATE 1: MARQUEE SIGN

- A. If this Alternate is accepted, add all work associated with the marquee sign as indicated on Drawings.

* * *

SECTION 16000: ELECTRICAL GENERAL PROVISIONS

PART 1: GENERAL

1.1 Related Requirements:

- A. Related Documents: The general provisions of the Contract, including the Conditions of the Contract (General, Supplementary, and other Conditions, Division 0) and Division 1 as appropriate, apply to the Work specified in this Section.
- B. Refer to Division 15, Mechanical, as well as the Specifications for the other various trades and materials and be thoroughly familiar with all provisions regarding electrical work.

1.2 Scope of Work: This section includes electrical general provisions for all electrical work indicated on drawings and specified elsewhere herein. Provide all necessary supplementary items for a complete installation intended by documents.

1.3 Material and Equipment:

- A. The term "provide" when used in the Contract Documents includes all items necessary for the proper execution and completion of the Work.
- B. Specific reference in the Specifications to any article, device, product, material, fixture, form or type of construction by name, make, or catalog number, shall be interpreted as establishing a standard of quality and shall not be construed as limiting competition; and the Contractor, in such cases, may at his option use any article, device, product, material, fixture, form or type of construction which in the judgment of the A/E expressed in writing is equal to that specified.
- C. Coordinate and properly relate all Work of this Division to building structure and work of all other trades.
- D. Visit premises and become thoroughly familiar with existing conditions; verify all dimensions in field. Advise A/E of any discrepancies prior to Bid Date in accordance with Division 0.
- E. Do not rough-in for any item or equipment furnished by others or noted "Not in Contract" (NIC), without first receiving rough-in information from other trades and/or A/E.
- F. Provide storage and protection for all equipment and materials in accordance with requirements of Division 0 and Division 1. Replace any equipment and materials damaged by improper handling, storage, or protection, at no additional cost to Owner.
- G. Keep premises clean in accordance with requirements of Division 0 and Division 1.

1.4 Substitutions:

- A. Substitutions are only allowed by approval of the A/E prior to Bid Date as stipulated in Division 0 and/or Division 1.

- B. Design of systems is based on specific equipment. If the use of other manufacturer's equipment, even though approved by A/E, involves additional cost due to space requirements, foundation requirements, increased mechanical or electrical services, the cost of such extra work shall be borne by supplier of substituted equipment. Even though a manufacturer's name appears in the Contract Documents as having acceptable equipment, his equipment shall be classified as being a substitute to the equipment originally designed for and named in the Contract Documents. Substitute equipment, material, etc. will not be allowed to deviate from Contract Document requirements.

1.5 Drawings and Specifications:

- A. The specific intent of these Contract Documents is to provide the various systems, equipment, etc. to the Owner complete and in a thoroughly calibrated functional condition.
- B. The Drawings shall not be construed as shop drawings. In the event of a possible interference with piping or equipment of another trade, items requiring set grade and elevations shall have precedence over other items. Should any major interference develop, immediately notify the A/E.
- C. In laying out Work, refer to electrical, mechanical, structural, and architectural drawings at all times in order to avoid interference and undue delays in the progress of the Work.

1.6 Codes and Regulations:

- A. All Work shall be in full accord with the National Electrical Code (NEC), local ordinances, building codes, and other applicable national, local, and state regulations.
- B. All equipment shall be listed with Underwriters Laboratories (UL) and shall conform to requirements and recommendations of the National Fire Protection Association (NFPA).
- C. All items provided under this Division shall comply with the American National Standards Institute (ANSI) "Specifications for Making Buildings and Facilities Accessible to and Usable by Physically Handicapped People," ANSI A 117.1.
- D. In the possible event of conflict between codes or regulations and Contract Documents, notify the A/E immediately. No departure from Contract Document requirements will be permitted without written approval.

1.7 Fees, Permits, and Taxes:

- A. Obtain and pay for all permits required for the Work of this Division. Pay all fees in connection therewith, including necessary inspection fees.
- B. Pay any and all taxes levied for Work of this Division, including state sales tax where applicable.

- 1.8 Manufacturer's Directions: Install and operate all equipment and material in strict accord with manufacturer's installation and operating instructions. The manufacturer's instructions shall become part of the Contract Documents and shall supplement Drawings and Specifications.
- 1.9 Submittal Data:
- A. Submit shop drawings, project data, and samples in accordance with requirements of Division 0 and Division 1.
 - B. Include items of a seemingly minor nature such as devices, boxes, conduit, etc.
 - C. Shop drawings shall consist of published ratings or capacity data, detailed construction drawings for fabricated items, wiring and control diagrams, performance curves, installation instructions, manufacturer's installation drawings, and other pertinent data. Submit drawings showing revisions to equipment layouts due to use of alternate or substitute equipment.
 - D. Where approved manufacturers and suppliers of equipment, materials, etc., are unable to fully comply with Contract Document requirements, specifically call such deviations to attention of A/E on submittals. Type deviations on a separate sheet; underlined statements or notations on standard brochures, equipment fly sheets, etc., will not be accepted.
 - E. Approval of submittals shall not relieve Contractor from furnishing required quantities and verifying dimensions. In addition, approval shall not waive original intent of Contract Documents.
 - F. Failure to obtain written approval of equipment shall be considered sufficient grounds for rejection of said equipment regardless of the stage of completion of the Project.
 - G. Submittals shall include the following, and as requested by A/E:
 - 1. Lighting fixtures and lamps.
 - 2. Panel boards.
 - 3. Safety switches.
 - 4. Fuses.
 - 5. Raceways:
 - a. EMT
 - b. H.W. steel conduit
 - 6. MT fittings, couplings, and connectors.
 - 7. Wiring devices and plates.
 - 8. Wire.
 - 9. Fire Alarm System:
 - a. Fire alarm annunciator panel
 - b. Pull stations
 - c. Speaker/Strobes

- 1.10 Project Record Documents:
- A. Keep Record Documents in accordance with requirements of Division 0 and/or Division 1.
 - B. During construction period, keep accurate records of installations made under this Division, paying particular attention to major interior and exterior underground and concealed conduits.
- 1.11 Cutting and Patching:
- A. Comply with all requirements of Division 0 and Division 1 regarding cutting and patching. Locate and timely install sleeves as required to minimize cutting and patching.
 - B. Cutting, fitting, repairing, patching, and finishing of all Work shall be done by craftsmen skilled in their respective trades. Where cutting is required, cut in such a manner as not to weaken structure, partitions, or floors. Holes required to be cut must be cut or drilled without breaking or around the holes. Where patching is necessary in finished areas of the building, the A/E will determine the extent of such patching and refinishing.
- 1.12 Painting:
- A. Painting shall be provided under Division 9, unless specified otherwise. Leave all exposed piping, materials, and equipment clean and free of all rust, grease, dirt, etc. before and after painting.
 - B. Factory finished equipment, fixtures, and materials which are marred, chipped, scratched, or otherwise unacceptable shall be repaired or replaced under this Division to A/E's satisfaction, at no additional cost to Owner.

* * *

APPENDIX A

Williams Play Lot Marquee Sign

Sign to be Watchfire model: **16mm RGB LED**

Pixel Pitch: 16.93mm

Viewing Area: 4'x10'

Warranty: 5 years

Character Height: 4" or larger

Minimum Viewing Distance: 38' or greater

System must come with necessary software to operate.

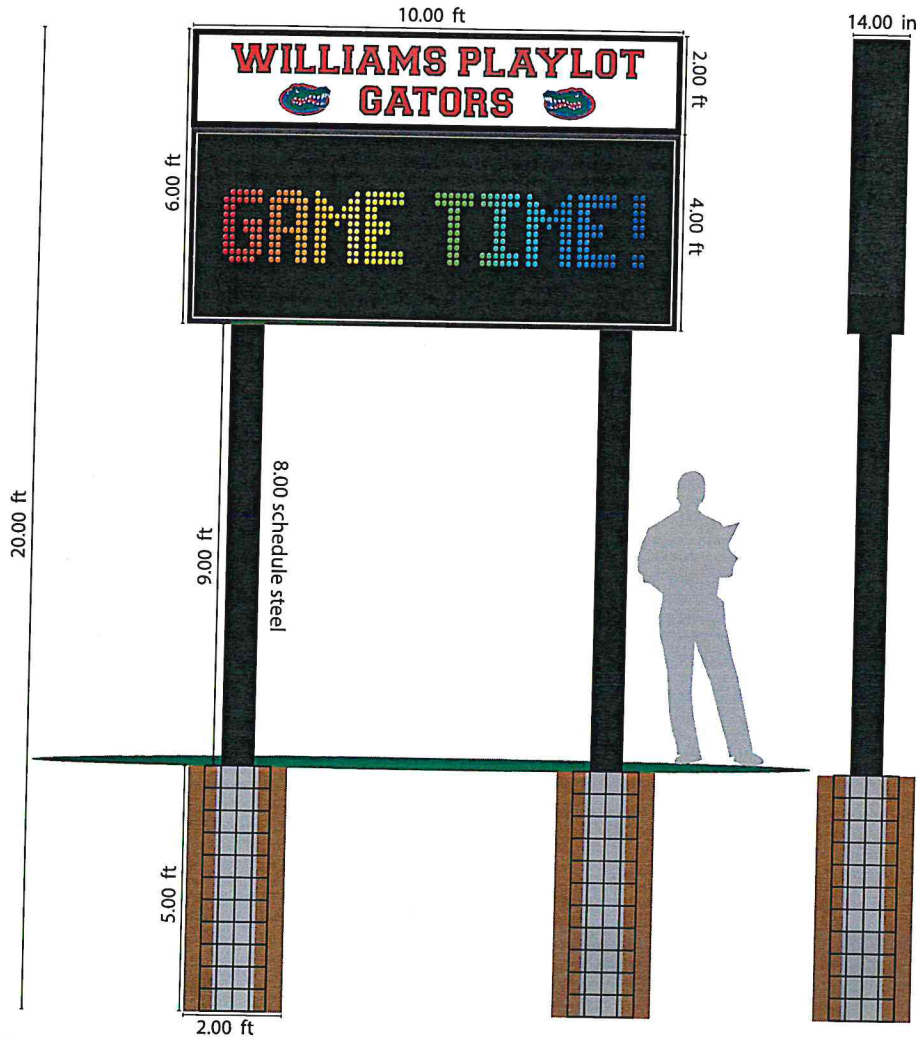
System to be remotely controlled by a laptop or desk computer.

Remote antenna must be attached to the sign.

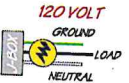
Must have a wireless broadband modem in the sign and assigned its own Internet Protocol address to connect to a computer system to control board anywhere where there is internet service.

Awarded vendor must hold a sign and software system tutorial when installation has been completed.

DOUBLE SIDED PYLON



UL Approved and Labeled



140 mph wind load

SPECS:

- (TOP CAB) 2 FT X 10 FT---14 IN DEEP
- TRANS ACRYLIC FACES WITH TRANS DPRINT GRAPHICS, QTY:(2 FACES)
- (EVM) 4 FT X 10 FT---14 IN DEEP
- PYLON HEIGHT: 20 FT---10 IN SCHEDULE STEEL PIPES
- PAINT COLORS USED---BLACK
- LED ILLUMINATED
- UL CERTIFIED

WATCHFIRE WIRELESS PLAN

The Watchfire Wireless Plan is a convenient way to get reliable wireless internet service for Watchfire signs. Watchfire's plan provides dependable service across Verizon's network coverage area with all the benefits of a cloud-based sign management system.

The Watchfire Wireless Plan also makes it easier to network and control several signs from a single computer, which can simplify sign management for businesses with multiple locations.

Fast, secure internet connection. The Watchfire Wireless Plan provides a secure internet connection through a cellular modem. 98%* of the US is covered by the plan, so you can update your sign anytime, from almost anywhere. Sign updates are quick and easy.

Simplified setup and sign management. Watchfire takes the guesswork out of account setup and management by providing a turnkey solution complete with service support.

Easy installation. The modem and plan are fully configured and ready to work when a Watchfire sign is installed. The Watchfire Wireless Plan does not require fiber or networking cable installation.

Automated Diagnostics. Watchfire can schedule automated sign diagnostics that alert the sign dealer or end user whenever there is an issue.

Security. Having a wireless plan allows you to isolate your sign network from your corporate networks thereby preventing any attacks on your corporate network through the sign network. The wireless network is also configured to keep entry points to a minimum.

Smart Sign Communication

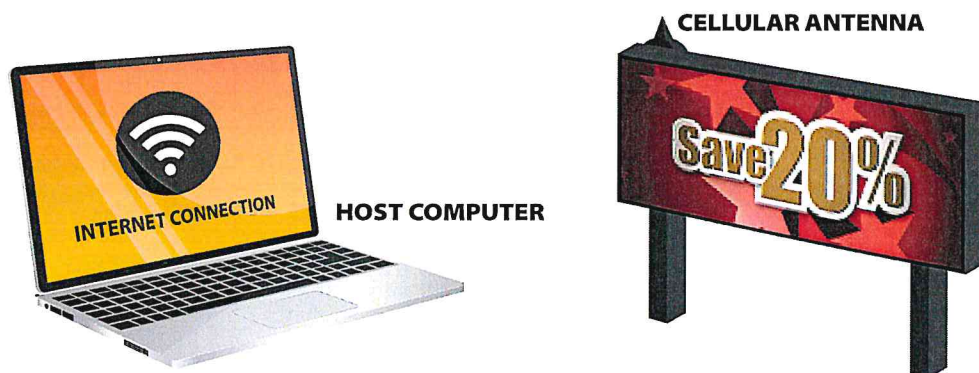
CONVENIENCE

- **Life-of-sign plan** so you never pay data fees again as long as you own the sign.
- **Simplify administration** with package billing.
- **Watchfire is your single source** for sign and data plan service and support.



COVERAGE

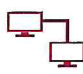
- **98% of the US*** is covered by the Watchfire Wireless Plan, so you can update your sign anytime, anywhere.
- **Sign updates** are quick and easy.

Contact your Watchfire representative for more information.



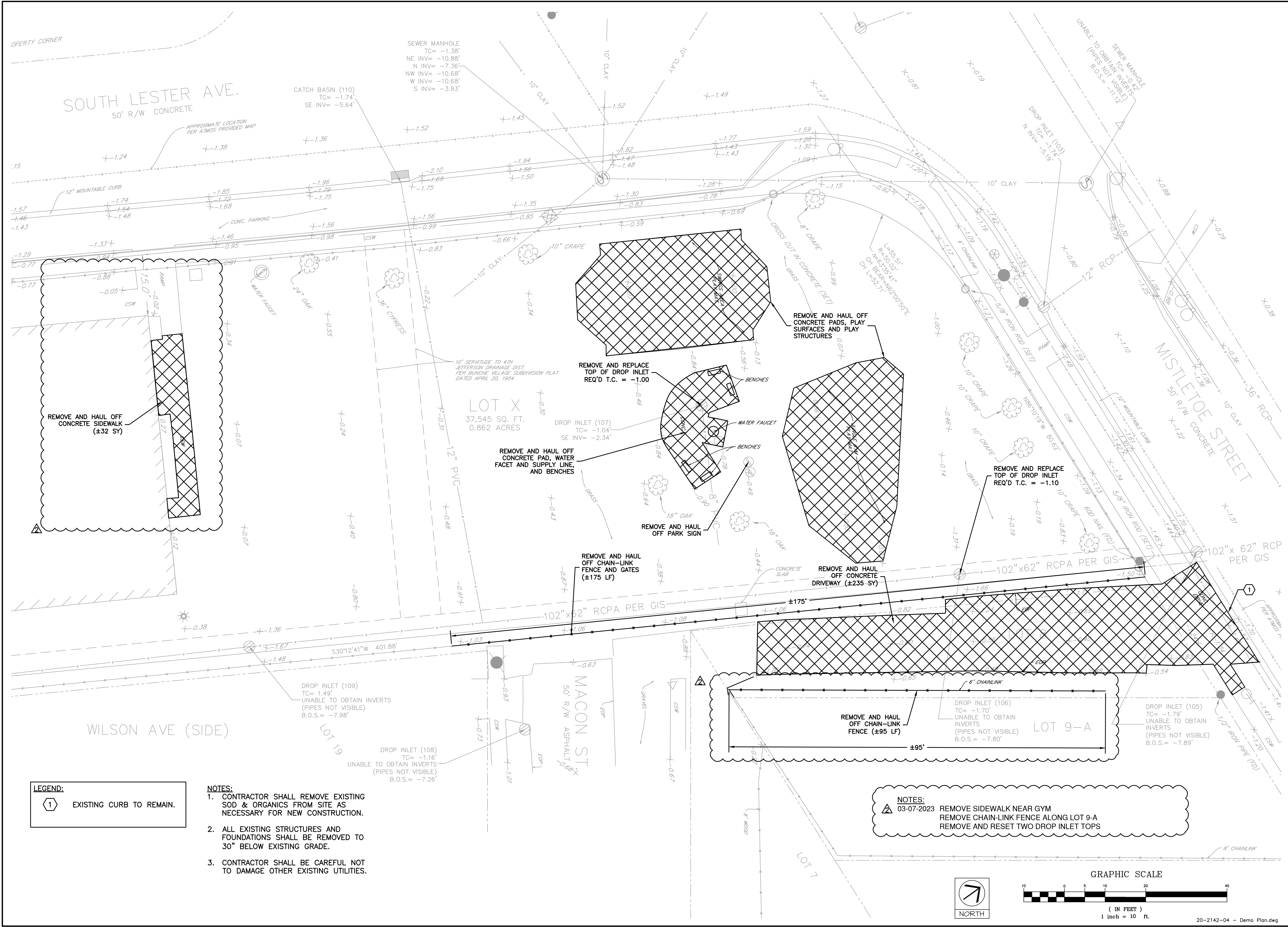

Connection
4G Wireless


Speed



Network Ready
✓


Security
Password-based Authentication;
SSL Encryption

*Based on 9/25/2019 U.S. Census population data. Verizon's 4G LTE service is available to more than 327 million people in the U.S. Alternative carriers are available in Canada and the U.S. if Verizon coverage is not available.



project no. 20-2142
drawn MAS, AIS, AIB
checked MAS
date 11-14-2022
revised 03-07-2023

Meyer Engineers, Ltd.
4937 Hearst Street . Suite 1B . Metairie, Louisiana 70001
phone.504.885.9892 . fax.504-887-5056
website.www.meyer-e-l.com

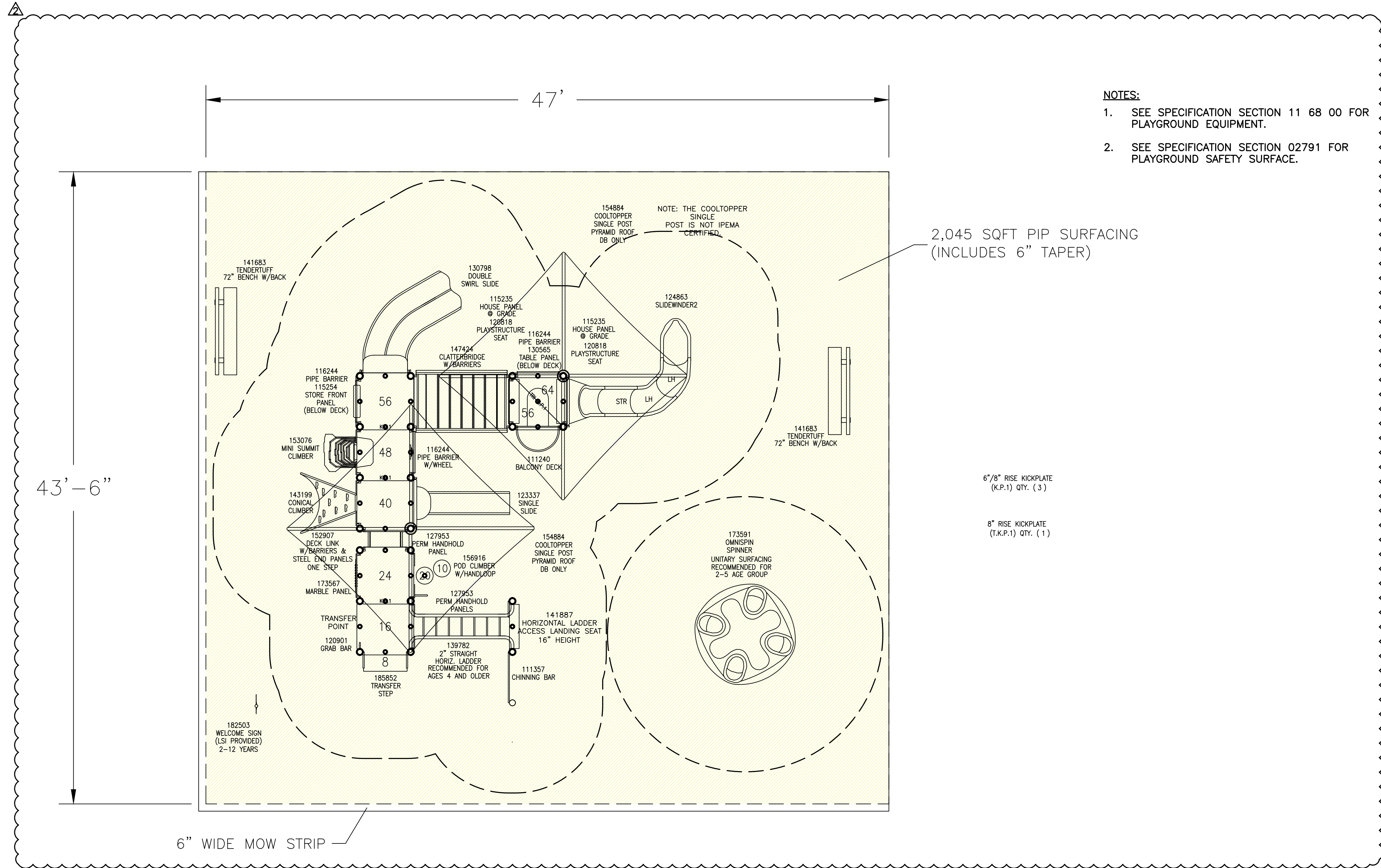
Meyer Engineers, Ltd.
ENGINEERS & ARCHITECTS

DEMOLITION PLAN

WILLIAMS PLAYLOT & ADA PARKING
JPRD, OWNER

sheet no.
4
of ___ sheets

Ethan J Vulpo



- NOTES:
- SEE SPECIFICATION SECTION 11 68 00 FOR PLAYGROUND EQUIPMENT.
 - SEE SPECIFICATION SECTION 02791 FOR PLAYGROUND SAFETY SURFACE.

TOTAL ELEVATED PLAY COMPONENTS	10		
TOTAL ELEVATED COMPONENTS ACCESSIBLE BY RAMP	0	REQUIRED	0
TOTAL ELEVATED COMPONENTS ACCESSIBLE BY TRANSFER	10	REQUIRED	5
TOTAL ACCESSIBLE GROUND LEVEL COMPONENTS SHOWN	4	REQUIRED	3
TOTAL DIFFERENT TYPES OF GROUND LEVEL COMPONENTS	4	REQUIRED	4

PlayBooster®
(2-12 years)
Max Fall Height: 64 inches

1
6

PLAYGROUND EQUIPMENT AND SAFETY SURFACE PLAN

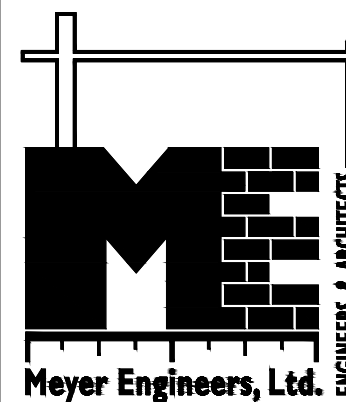
14

- NOTES:
- 03-07-2023 REMOVED PLAY AREA TRANSITION/RAMP
- REMOVED MOW STRIP ON SIDES THAT WILL BE FLUSH W/ SIDEWALK

project no. 20-2142
drawn MAS, AIS, AIB
checked MAS
date 11-14-2022
revised 03-07-2023



Meyer Engineers, Ltd.
4937 Hearst Street . Suite 1B . Metairie, Louisiana 70001
phone.504.885.9892 . fax.504-887-5056
website.www.meyer-e-l.com



PLAYGROUND EQUIPMENT PLAN

WILLIAMS PLAYLOT & ADA PARKING

JPRD, OWNER

sheet no.

6

of ___ sheets