



# ALUMINUM BLEACHERS

## BID #50-00138869

Presented by: Bliss Products and Services, Inc  
800-248-2547  
[info@blissproducts.com](mailto:info@blissproducts.com)





July 8, 2022

Jefferson Parish  
200 Derbigny Street  
Suite 4400  
Gretna, LA 70053

Re: Bleachers Bid #50-138869

Enclosed please find our proposal for new bleachers.

Bliss Products and Services, Inc. has over 38 years of experience in installing bleachers such as the ones we are proposing. We have worked with National Recreation Systems, the bleacher manufacturer, for over 10 years and have formed a great working relationship with them.

Please do not hesitate to contact us with any questions. Should any arise, please contact our Bid Manager, Kristen George. She can be reached via phone at 800-248-2547 or by email at [kristen@blissproducts.com](mailto:kristen@blissproducts.com).

We look forward to the opportunity to work with you on this project.

Sincerely,

Gregg Bliss  
President  
Bliss Products and Services, Inc.  
800-248-2547  
[gregg@blissproducts.com](mailto:gregg@blissproducts.com)  
[www.blissproducts.com](http://www.blissproducts.com)



**Bid Number 50-138869**

**Labor, Material, Equipment necessary to Furnish, Deliver and Install  
Two (2) Aluminum Bleachers for the Department of Parks and  
Recreation**

**BID DUE: July 8, 2022 AT 11:00 A.M.**

**ATTENTION VENDORS!!!**

**Please review all pages and respond accordingly, complying with all provisions  
in the technical specifications and Jefferson Parish Instructions for Bidders and  
General Terms and Conditions. All bids must be received on the Purchasing  
Department's eProcurement site, [www.jeffparishbids.net](http://www.jeffparishbids.net), by the bid due date  
and time. Late bids will not be accepted.**

**Jefferson Parish Purchasing Department  
200 Derbigny Street  
General Government Building, Suite 4400  
Gretna, LA 70053  
Buyer Name: Doris Abraham  
Buyer Email: [DABRAHAM@jeffparish.net](mailto:DABRAHAM@jeffparish.net)  
Buyer Phone: 504-364-2690**



DATE: 6/27/2022

INVITATION TO BID  
THIS IS NOT AN ORDER

Page: 1

BID NO.: 50-00138869

**JEFFERSON PARISH**

PURCHASING DEPARTMENT  
P.O. BOX 9  
GRETN, LA. 70054-0009  
504-364-2678

VENDOR:

BUYER: DABRAHAM@jeffparish.net

Bids will be received until 11:00 AM, 7/08/2022 via online at [www.jeffparishbids.net](http://www.jeffparishbids.net).

**LATE BIDS WILL NOT BE ACCEPTED**

NOTE: ONLY BIDS WRITTEN IN INK OR TYPEWRITTEN, AND PROPERLY SIGNED BY A MEMBER OF THE FIRM OR AUTHORIZED REPRESENTATIVE, WILL BE ACCEPTED. PENCIL AND/OR PHOTOSTATIC FIGURES OR SIGNATURES SHALL RESULT IN BID REJECTION. HOWEVER, ELECTRONIC SIGNATURES AS DEFINED IN LSA - R.S. 9:2602(8) ARE ACCEPTABLE. SIGNATURE MUST BE A SECURED DIGITAL SIGNATURE.

All bids submitted are subject to these instructions and general conditions and any special conditions and specifications contained herein, all of which are made part of this bid proposal reference. By submitting a bid, vendor agrees to comply with all provisions of Louisiana Law, as well be in compliance with the Jefferson Parish Code of Ordinances, Louisiana Code of Ethics, applicable Jefferson Parish ethical standards and Jefferson Parish Resolution No. 113646 and/or Resolution No. 113647 as amended. A copy of these resolutions may be obtained from the Office of the Parish Clerk, Suite 6700, Jefferson Parish General Government Building, 200 Derbigny Street, Gretna, LA 70053. You may also obtain a copy by visiting the Purchasing Department webpage at [purchasing.jeffparish.net](http://purchasing.jeffparish.net) and clicking on On-line forms.

All vendors submitting bids should register as a Jefferson Parish vendor if not already yet registered. Registration forms may be downloaded from <http://purchasing.jeffparish.net> and by clicking on Vendor Information. Current W-9 forms with respective Tax Identification numbers and vendor applications may be submitted at any time; however, if your company is not registered and/or a current W-9 form is not on file, vendor registration is mandatory. Vendors may experience a delay in payment if your company is not a registered vendor with Jefferson Parish.

Jefferson Parish is exempt from paying sales tax under LSA-R.S. 47:301 (8)(c). All prices for purchases by Jefferson Parish of supplies and materials shall be quoted in the unit of measure specified and unless otherwise specified, shall be exclusive of state and local taxes. The price quoted for work shall be stated in figures. In the event there is a difference in unit prices and totals, the unit price shall prevail. Quotations shall be based on F.O.B. Delivered, anywhere within the Parish as designated by the Purchasing Department. JEFFERSON PARISH WILL ACCEPT ONE BID ONLY FROM EACH VENDOR. Items bid must meet specifications. JEFFERSON PARISH will accept one price for each item unless otherwise indicated. Two or more prices for one item will result in bid rejection. Bidders are required to complete, sign and return the bid form and/or complete and return the associated line item pricing forms as indicated. The price quoted for work shall be stated in figures. In the event there is a difference in unit prices and totals, the unit prices shall prevail

JEFFERSON PARISH reserves the right to award contracts or place orders on a lump sum or individual item basis, or such combination, as shall in its judgment be in the best interest of JEFFERSON PARISH. Every contract or order shall be awarded to the LOWEST RESPONSIVE and RESPONSIBLE BIDDER, taking into consideration the CONFORMITY WITH THE SPECIFICATIONS and the DELIVERY AND/OR COMPLETION DATE

PROTESTS: Only those vendors that submit bids in response to this solicitation may protest any element of the procurement, in writing to the Director of the Purchasing Department. Written protest must be received within 48 hours of the release of the bid tabulation by the Purchasing Department. After consultation, the Parish Attorney's Office will then respond to protests in writing. (For more information, please see Chapter 2, Article VII, Division 2, Sec. 2-914.1 of the Jefferson Parish Code of Ordinances.)

JEFFERSON PARISH reserves the right to cancel all or any part of an order if not shipped promptly. No charges will be allowed for parking or cartage unless specified in the quotation. The order must not be filled at a higher price than quoted. JEFFERSON PARISH reserves the right to cancel at any time and for any reason by issuing a THIRTY (30) day written notice to the contractor.

JEFFERSON PARISH requires all products to be new (current) and all work must be performed according to standard practices for the project. Unless otherwise specified, no aftermarket parts will be accepted. Unless otherwise specified, all workmanship and materials must have at least one (1) year guaranty, in writing, from the date of delivery and/or acceptance of the project. Any deviations or alteration from the specifications must be indicated on the bid form for each item and upon request, product data for same must be submitted by the time specified by the Purchasing Department.

If this bid requires a pre-bid conference (see Additional Requirements section), bidders are advised that such conference will be held to allow bidders the opportunity to identify any discrepancies in the bid specifications and seek further clarification regarding instructions. The Purchasing Department will issue a written response to bidders' questions in the form of an Addendum.

All formal Addenda require written acknowledgment on the bid form by the bidder by the bidder placing the Addendum number in the appropriate section. Failure to acknowledge an Addendum on the bid form shall cause the bid to be rejected; JEFFERSON PARISH reserves the right to award bid to next lowest responsive and responsible bidder in this event.

USE OF BRAND NAMES AND STOCK NUMBERS: Where brand names and stock numbers are specified, it is for the purpose of establishing certain minimum standards of quality. Bids may be submitted for products of equal quality, provided brand names and stock numbers are specified. Complete product data may be required prior to award.

Quantities listed are for bidding purposes only. Actual requirements may be more or less than quantities listed.



DATE: 6/27/2022

BID NO.: 50-00138869

Page: 2

### INSTRUCTIONS FOR BIDDERS AND GENERAL CONDITIONS

Bidders are not to exclude from participation in, deny the benefits of, or subject to discrimination under any program or activity, any person in the United States on the grounds of race, color, national origin, or sex; nor discriminate on the basis of age under the Age Discrimination Act of 1975, or with respect to an otherwise qualified handicapped individual as provided in Section 504 of the Rehabilitation Act of 1973, or on the basis of religion, except that any exemption from such prohibition against discrimination on the basis of religion as provided in the Civil Rights Act of 1964, or Title VI and VII of the Act of April 11, 1968, shall also apply. This assurance includes compliance with the administrative requirements of the Revenue Sharing final handicapped discrimination provisions contained in Section 51.55 (c), (d), (e), and (k)(5) of the Regulations. New construction or renovation projects must comply with Section 504 of the 1973 Rehabilitation Act, as amended, in accordance with the American National Standard Institute's specifications (ANSI A17.1-1961).

Jefferson Parish and its partners as the recipients of federal funds are fully committed to awarding a contract(s) to firm(s) that will provide high quality services and that are dedicated to diversity and to containing costs. Thus, Jefferson Parish strongly encourages the involvement of minority and/or woman-owned business enterprises (DBE's, including MBE's, WBE's and SBE's) to stimulate participation in procurement and assistance programs.

#### IN ACCORDANCE WITH STATE REGULATIONS JEFFERSON PARISH OFFERS ELECTRONIC PROCUREMENT TO ALL VENDORS

This electronic procurement system allows vendors the convenience of reviewing and submitting bids online. This is a secure site and authorized personnel have limited read access only. Bidders are to submit electronically using this free service; while the website accepts various file types, one single PDF file containing all appropriate and required bid documents is preferred. Bidders submitting uploaded images of bid responses are solely responsible for clarity. If uploaded images/documents are not legible, then bidder's submission will be rejected. Please note all requirements contained in this bid package for electronic bid submission.

Please visit our E-Procurement Page at [www.jeffparishbids.net](http://www.jeffparishbids.net) to register and view Jefferson Parish solicitations. For more information, please visit the Purchasing Department page at <http://purchasing.jeffparish.net>.

### ADDITIONAL REQUIREMENTS FOR THIS BID

PLEASE MATCH THE NUMBERS PRINTED IN THIS BOX WITH THE CORRESPONDING INSTRUCTIONS BELOW.

3, 5, 6, 10, 13

1. All bidders must attend the MANDATORY pre-bid conference and will be required to sign in and out as evidence of attendance. In accordance with LSA R.S. 38:2212(I), all prospective bidders shall be present at the beginning of the MANDATORY pre-bid conference and shall remain in attendance for the duration of the conference. Any prospective bidder who fails to attend the conference or remain for the duration shall be prohibited from submitting a bid for the project.
2. Attendance to this pre-bid conference is optional. However, failure to attend the pre-bid conference shall not relieve the bidder of responsibility for information discussed at the conference. Furthermore, failure to attend the pre-bid conference and inspection does not relieve the successful bidder from the necessity of furnishing materials or performing any work that may be required to complete the work in accordance with the specification with no additional cost to the owner.
3. Contractor must hold current applicable JEFFERSON PARISH licenses with the Department of Inspection and Code Enforcement. Contractor shall obtain any and all permits required by the JEFFERSON PARISH Department of Inspection and Code Enforcement. The contractor shall be responsible for the payment of these permits. All permits must be obtained prior to the start of the project. Contractor must also hold any and all applicable Federal and State licenses. Contractor shall be responsible for the payment of these permits and shall obtain them prior to the start of the project.
4. A LA State Contractor's License will be required in accordance with LSA R.S. 37-2150 et. seq. and such license number will be shown on the outside of the bid electronic envelope. Failure to comply will cause the bid to be rejected. When submitting the bid electronically, the license number must be entered in the appropriate field in the electronic procurement system. Failure to comply will cause the bid to be rejected.



DATE: 6/27/2022

BID NO.: 50-00138869

Page: 3

### INSTRUCTIONS FOR BIDDERS AND GENERAL CONDITIONS

5. It is the bidder's responsibility to visit the job site and evaluate the job before submitting a bid.
6. Job site must be clean and free of all litter and debris daily and upon completion of the contract. Passageways must be kept clean and free of material, equipment, and debris at all times. Flammable material must be removed from the job site daily because storage will not be permitted on the premises. Precaution must be exercised at all times to safeguard the welfare of JEFFERSON PARISH and the general public.
7. **PUBLIC WORKS BIDS:** All awards for public works in excess of \$5,000.00 will be reduced to a formal contract which shall be recorded at the contractor's expense with the Clerk of Court and Ex-Officio Recorder of Mortgages for the Parish of Jefferson. A price list of recordation costs may be obtained from the Clerk of Court and Ex-Officio Recorder of Mortgages for the Parish of Jefferson. All awards in excess of \$25,000.00 will require both a performance and a payment bond. Unless otherwise stated in the bid specifications, the performance bond requirements shall be 100% of the contract price. Unless otherwise state in the bid specifications, the payment bond requirements shall be 100% of the contract price. Both bonds shall be supplied at the signing of the contract.
8. **NON-PUBLIC WORKS BIDS:** A performance bond will be required for this bid. The amount of the bond will be 100% of the contract price unless otherwise indicated in the specifications. The performance bond shall be supplied at the signing of the contract.
9. **NON-PUBLIC WORKS BIDS:** A payment bond will be required for this bid. The amount of the bond will be 100% of the contract price unless otherwise indicated in the specifications. The payment bond shall be supplied at the signing of the contract.
10. All bidders must comply with the requirements stated in the attached "Standard Insurance Requirements" sheet attached to this bid solicitation. Failure to comply with this instruction will result in bid rejection.
11. A bid bond will be required with bid submission in the amount of 5% of the total bid, unless otherwise stated in the bid specifications. All sureties must be in original format (no copies). When submitting a bid online, vendors must submit an electronic bid bond through the respective online clearinghouse bond management system(s) as indicated in the electronic bid solicitation on Central Auction House. No scanned paper copies of any bid bond will be accepted as part of the electronic bid submission.
12. This is an as needed basis contract. JEFFERSON PARISH makes no representations on warranties with regard to minimum guaranteed quantities unless otherwise stated in the bid specifications.
13. Freight charges should be included in total cost when quoting. If not quoted FOB DELIVERED, freight must be quoted as a separate item. Bid may be rejected if not quoted FOB DELIVERED or if freight charges are not indicated on bid form.
14. **PUBLIC WORKS BIDS - Completed, Signed and Properly Notarized Affidavits Required;** This applies to all solicitations for construction, alteration or demolition of public buildings or projects, in conformity with the provisions contained in LSA-RS 38:2212.9, LSA-RS 38:2212.10, LSA-RS 38:2224, and Sec 2-923.1 of the Jefferson Parish Code of Ordinances. For bidding purposes, all bidders must submit with bid submission COMPLETED, SIGNED and PROPERLY NOTARIZED Affidavits, including: Non-Conviction Affidavit, Non-Collusion Affidavit, Campaign Contribution Affidavit, Debt Disclosures Affidavit and E-Verify Affidavit. For the convenience of vendors, all affidavits have been combined into one form entitled PUBLIC WORKS BID AFFIDAVIT. This affidavit must be submitted in its original format, and without material alteration, in order to be compliant and for the bid to be considered responsive. A scanned copy of the completed, signed and properly notarized affidavit may be submitted with the bid, however, the successful bidder must submit the original affidavit in its original format and without material alteration upon contract execution. Failure to comply will result in the bid submission being rejected as non-responsive. The Parish reserves the right to award bid to the next lowest responsive and responsible bidder in this event.
15. **NON PUBLIC WORK BIDS - Completed, Signed and Properly Notarized Affidavits Required** in conformity with the provisions contained in LSA - RS 38:2224 and Sec 2-923.1 of the Jefferson Parish Code of Ordinances. For bidding purposes, all bidders must submit with bid submission COMPLETED, SIGNED and PROPERLY NOTARIZED Affidavits, including: Non-Collusion Affidavit, Debt Disclosures Affidavit and Campaign Contribution Affidavit. For the convenience of vendors, all affidavits have been combined into one form entitled NON PUBLIC WORKS BID AFFIDAVIT. This affidavit must be submitted in its original format, and without material alteration, in order to be compliant and for the bid to be considered responsive. A scanned copy of the completed, signed and properly notarized affidavit may be submitted with the bid, however, the successful bidder must submit the original affidavit in its original format and without material alteration upon contract execution. Failure to comply will result in the bid submission being rejected as non-responsive. The Parish reserves the right to award bid to the next lowest responsive and responsible bidder in this event.



DATE: 6/27/2022

BID NO.: 50-00138869

Page: 4

### INSTRUCTIONS FOR BIDDERS AND GENERAL CONDITIONS

16. The ensuing contract for this bid solicitation may be eligible for FEMA reimbursement and/or Federal funding/reimbursement. As such, the referenced appendix will be applicable accordingly and shall be considered a part of the bid documents. All applicable certifications must be duly completed, signed and submitted with bid submission. Failure to submit applicable certifications with bid submission will result in bid rejection.

17. For this project, the Contractor shall not pay any state or local sales or use taxes on materials and equipment which are affixed and made part of the immovable property of the project or which is permanently incorporated in the project (hereinafter referred to as "applicable materials and equipment"). All purchases of applicable materials or equipment shall be made by the contractor on behalf of and as the agent of Jefferson Parish (Owner), a political subdivision of the State of Louisiana. No state and local sales and use taxes are owed on applicable materials and equipment under the provisions of Act 1029 of the 1991 Regular Session - Louisiana Revised Statute 47:301(8)(c). Owner will furnish to contractor a certificate form which certifies that Owner is not required to pay such state or local sales and use taxes, and contractor shall furnish a copy of such certificate to all vendors or suppliers of the applicable materials and equipment, and report to Owner the amount of taxes not incurred.

It shall be the duty of every parish officer, employee, department, agency, special district, board, and commission: and the duty of every contractor, subcontractor, and licensee of the parish, and the duty of every applicant for certification of eligibility for a parish contract or program, to cooperate with the Inspector General in any investigation, audit, inspection, performance review, or hearing pursuant to Jefferson Parish Code of Ordinances Section 2-155.10(19). By submitting a bid, vendor acknowledges this and will abide by all provisions of the referenced Jefferson Parish Code of Ordinances.

DATE: 6/27/2022

BID NO.: 50-00138869

INVITATION TO BID  
THIS IS NOT AN ORDER

Page: 5

JEFFERSON PARISH

PURCHASING DEPARTMENT  
P.O. BOX 9  
GRETN, LA. 70054-0009  
504-364-2678

VENDOR: Bliss Products and Services, Inc.

BUYER: DABRAHAM

As per LSA-RS 47:301 et seq., all governmental bodies are excluded from payment of sales taxes to any Louisiana taxing body. Quotations shall be based on F.O.B. Agency warehouse or jobsite, anywhere within the Parish as designated by the Purchasing Department.

JEFFERSON PARISH reserves the right to cancel all or any part of an order if not shipped promptly. No charges will be allowed for parking or cartage unless specified in quotation. The order must not be filled at a higher price than quoted. JEFFERSON PARISH reserves the right to cancel at any time and for any reason by issuing a THIRTY (30) day written notice to the contractor.

JEFFERSON PARISH is expecting all products to be new and all work to be done in workman-like manner, according to standard practices. Any deviations or alteration from the specifications must be indicated on the bid form for each item and upon request, product data for same must be submitted by the time specified by the Purchasing Department.

DELIVERY: FOB JEFFERSON PARISH

INDICATE DELIVERY DATE ON EQUIPMENT AND SUPPLIES

4-6 weeks

INDICATE STARTING TIME (IN DAYS) FOR CONSTRUCTION WORK

45 days

INDICATE COMPLETION TIME (IN DAYS) FOR CONSTRUCTION WORK

60 days

In the event that addenda are issued with this bid, bidders MUST acknowledge all addenda on the bid form. Bidder must acknowledge receipt of an addendum on the bid form by placing the addendum number as indicated. Failure to acknowledge any addendum on the bid form will result in bid rejection.

Acknowledge Receipt of Addenda: NUMBER: 1 (6/30/22)

NUMBER: \_\_\_\_\_

NUMBER: \_\_\_\_\_

NUMBER: \_\_\_\_\_

LOUISIANA CONTRACTOR'S LICENSE NO.: (if applicable) 50059

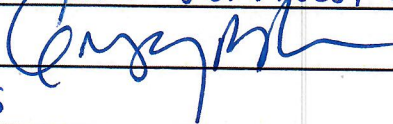
\*\*\* ALL BIDDERS MUST COMPLETE SECTION BELOW \*\*\*

FIRM NAME:

Bliss Products and Services, Inc.

SIGNATURE:

(Must be signed here)



TITLE:

President

PRINT OR TYPE NAME:

Gregg Bliss

ADDRESS:

6831 S. Sweetwater Rd.

CITY, STATE:

Lithia Springs GA

ZIP:

30122

TELEPHONE:

800) 248-2547

FAX:

800) 920-1915

EMAIL ADDRESS:

info@blissproducts.com

TOTAL PRICE OF ALL BID ITEMS: \$ 30,050.20



DATE: 6/27/2022

INVITATION TO BID FROM JEFFERSON PARISH - continued

Page: 6

BID NO.: 50-00138869

SEALED BID

ITEM NUMBER	QUANTITY	U/M	DESCRIPTION OF ARTICLES	UNIT PRICE QUOTED	TOTALS
1	1.00	JOB	<p>Labor, material, equipment necessary to furnish, deliver and install two (2) aluminum bleachers for the Department of Parks and Recreation.</p> <p>0001 M.L.KING PLAYGROUND BLEACHERS LABOR &amp; MATERIALS TO FURNISH, DELIVER &amp; INSTALL TWO (2) ALUMINUM BLEACHERS AT:</p> <p>M.L.KING PLAYGROUND 2400 LESTER STREET HARVEY, LA 70058</p> <p>PER THE ATTACHED SPECIFICATIONS ***</p> <p>CONTACT: GERRY CONTANT 504-349-5000 504-339-4413</p>	30650.20	30650.20

**LABOR & MATERIALS TO FURNISH, DELIVER & INSTALL TWO (2) ALUMINUM  
BLEACHERS AT M.L. KING PLAYGROUND,  
2400 LESTER STREET, HARVEY, LA 70058**

**BID # 50-138869**

**Section 1.0 – Pre-Bid Conference:**

There will be no pre-bid conference for this project. The successful bidder will be responsible for all measurements, etc. All site visits should be arranged through Gerry Constant, by calling the office at (504)349-5000 or email at [gconstant@jeffparish.net](mailto:gconstant@jeffparish.net)

JOB SITE: M.L.King Playground; 2400 Lester Street, Harvey, LA 70058

**Section 2.0 – Scope:**

We extend this bid to cover all labor, materials, and necessary essentials to furnish, deliver and install two (2) new aluminum bleachers at M.L.King Playground.

**Section 3.0 – Bid Specifications:**

The successful bidder shall supply all labor, materials, and necessary essentials to furnish, deliver and install two (2) new aluminum bleachers at M.L.King Playground.

- A. Location of each bleacher to be installed will be determined by the owner
- B. Install two (2) non-elevated five (5) row twenty-one (21) foot bleachers with fifty-eight (58) seating capacity each
- C. Aluminum angle frame
  - Understructure to be 2" X 2" X 3/16" and 1 ½" X 1 ½" X 3/16", 6061 T-6 welded aluminum angle
- D. Aluminum seat plank and aluminum floor plank
  - Seat plank to be 2" X 10"
  - Floor plank to be 2" X 10"



- E. Rise and Run
  - Rise to be 8"
  - Run to be 24"
- F. Safety rails to be welded aluminum ¾" vertical picket with a 1.66" aluminum pipe top and bottom caps.
- G. All hardware to be Hot Dipped Galvanized in nature.

#### **Section 4.0 - Hours of Work:**

Work shall be performed during normal working hours. All work must be scheduled with owner representative 5 days in advance. The successful bidder shall work normal working hours (7:00am – 5:00pm) to provide a safe work environment at no extra charge to Jefferson Parish.

#### **Section 5.0 - Cleaning Area and Safety:**

Job site must be clean and free of all litter and debris daily and upon completion of the contract. Passageways must be kept clean and free of material, equipment, and debris at all times. Inflammable material must be removed from the job site daily, because storage will not be permitted on the premises. Precautions must be exercised at all times to safeguard the welfare and safety of the general public, employees of Jefferson Parish, and other Parish officials.

#### **Section 6.0- MANUFACTURER WARRANTY**

All workmanship and assembly must carry a One (1) year warranty from time of delivery. Materials must carry a twenty-five (25) year extended warranty.

#### **Section 7.0 – Pre-Construction Conference and Notice to Proceed:**

A Pre-Construction Conference shall be held between the successful bidder and the owner before any work commences. No work shall be performed until the successful bidder receives a written "Notice to Proceed" to begin work.



## **STANDARD INSURANCE REQUIREMENTS FOR BIDDING PURPOSES**

All required insurance under this bid shall conform to Jefferson Parish Resolution No. 113646 or No. 113647, as applicable. Contractors may not commence any work under any ensuing contract unless and until all required insurance and associated evidentiary requirements thereto have been met, along with any additional specifications contained in the **Invitation to Bid**. Except as where otherwise precluded by law, the Parish Attorney or his designee, with the concurrence of the Director of Risk Management or his designee, may agree on a case-by-case basis, to deviate from Jefferson Parish's standard insurance requirements, as provided in this Section. Vendors requesting deviation therefrom shall submit such requests in writing, along with compelling substantiation, to the Purchasing Department prior to the bid's due date. Any changes to the insurance requirements will be reflected in the bid specifications and addenda. Prior to contract execution and at all times thereafter during the term of such contract, contractors must provide and continuously maintain all coverages as required by the foregoing Resolutions, and the contract documents. Failure to do so shall be grounds for suspension, discontinuation or termination of the contract.

---

For bidding purposes, bidders must submit with bid submission a current (valid) insurance certificate evidencing the required coverages. Failure to comply will cause bid to be rejected. The current insurance certificate will be used for proof of insurance at time of evaluation. Thereafter, and prior to contract execution, the low bidder will be required to provide final insurance certificates to the Parish which shall name **the Jefferson Parish, its Districts Departments and Agencies under the direction of the Parish President and the Parish Council** as additional insureds regarding negligence by the contractor for the Commercial General Liability and the Comprehensive Automobile Liability policies. Additionally, said certificates should reflect the name of the Parish Department receiving goods and services and reference the respective Jefferson Parish bid number.

---

## **JEFFERSON PARISH REQUIRED STANDARD INSURANCE**

### **☒ WORKER'S COMPENSATION INSURANCE**

As required by Louisiana State Statute, exception; Employer's Liability, Section B shall be \$1,000,000 per occurrence when Work is to be over water and involves maritime exposures to cover all employees not covered under the State Worker's Compensation Act, otherwise this limit shall be no less than \$500,000 per occurrence.

**Note:** If your company is not required by law to carry workmen's compensation insurance, i.e. not a Louisiana company, sole employee of the company, then bidders must request a workmen's compensation insurance declaration affidavit prior to the bid opening date. This insurance declaration affidavit must be fully completed, signed, properly notarized and submitted with the bid. A scanned copy may be submitted with the bid; however, the successful bidder must submit the original affidavit in its original format and without material alteration upon contract execution. Failure to comply will result in the bid submission being



rejected as non-responsive. The Parish reserves the right to award bid to the next lowest responsive and responsible bidder in this event.

☒ **COMMERCIAL GENERAL LIABILITY**

Shall provide limits not less than the following: \$1,000,000.00 Combined Single Limit per Occurrence for bodily injury and property damage.

☒ **COMPREHENSIVE AUTOMOBILE LIABILITY**

Bodily injury liability \$1,000,000.00 each person; \$1,000,000.00 each occurrence.  
Property Damage Liability \$1,000,000.00 each occurrence.

**Note:** This category may be omitted if bidders do not/will not utilize company vehicles for the project or do not possess company vehicles. Bidder must request an automobile insurance declaration affidavit prior to the bid opening date. This insurance declaration affidavit must be fully completed, signed, properly notarized and submitted with the bid. A scanned copy of the completed, signed and properly notarized affidavit may be submitted with the bid; however, the successful bidder must submit the original affidavit in its original format and without material alteration upon contract execution. Failure to comply will result in the bid submission being rejected as non-responsive. The Parish reserves the right to award bid to the next lowest responsive and responsible bidder in this event.

**DEDUCTIBLES** - The Parish Attorney with concurrence of the Director of Risk Management have waived the deductible section of the Terms and Conditions for all Invitations to Bid, until further notice.

**UMBRELLA LIABILITY COVERAGE**

An umbrella policy or excess may be used to meet minimum requirements.

**FOR CONSTRUCTION AND RENOVATION PROJECTS:**

The following are required if selected below. Such insurance is due upon contract execution.

☐ **OWNER'S PROTECTIVE LIABILITY**

To be for the same limits of liability for bodily injury and property damage liability established for commercial general liability.

☐ **BUILDER'S RISK INSURANCE**

The contractor shall maintain Builder's Risk Insurance at his own expense to insure both the owner (Parish of Jefferson) and contractor as their interest may appear.



# JEFFERSON PARISH

## DEPARTMENT OF PURCHASING

CYNTHIA LEE SHENG  
PARISH PRESIDENT

RENNY SIMNO  
DIRECTOR

June 30, 2022

### ADDENDUM # 1

Bid No.: 50-138869

Bid Opening Date: July 8, 2022

**For: Labor, Material, Equipment necessary to furnish, deliver and install two (2) Aluminum Bleachers for the Department of Parks and Recreation**

Addendum # 1 is issued to answer questions that were submitted.

- Q1. To meet current NFPA regulations for bleachers, an aisle, double footboards, and riser boards all rows are required. The specifications do not call for them but I believe they should be required. Please advise.
- A1. **Yes, the bleachers must be NFPA certified.**
- Q2. If the bleachers are going to be installed on concrete, concrete wedge anchors are required; if they are going on grass, treated wood groundsills are required. Please advise the installation base and if either of the above will be required.
- A2. **It will be required to have wood groundsills.**
- Q3. In order to meet wind load requirements, bleachers that are installed on grass with groundsills should also be tied down with auger anchors and tie straps. Please advise if these are required.
- A3. **They are not required.**
- Q4. The specs call for vertical picket guardrails as the safety rails. Industry standard is chain link fencing, so just wanted to confirm as vertical pickets are much more expensive.
- A4. **We want vertical picket guardrails, as stated in our specifications.**

Sincerely,

Doris Abraham

Doris Abraham

Jefferson Parish Purchasing Department

**Bidders must acknowledge all addenda in the appropriate section on the bid form. Bidder acknowledges receipt of this addendum on the bid form as indicated. Failure to do so will result in bid rejection.**

**This addendum is a part of the contract documents and modifies the original bidding documents and specifications. The contents of this addendum shall be included in the contract documents. Changes made by this addendum shall take precedence over the documents of earlier date.**

JOSEPH S. YENNI BUILDING - 1221 ELMWOOD PARK BLVD - SUITE 404 - JEFFERSON, LA 70123 - PO BOX 10242 JEFFERSON, LA 70181-0242  
OFFICE 504.364-2678

GENERAL GOVERNMENT BUILDING - 200 DERBIGNY ST - SUITE 4400 - GRETN, LA 70053 - PO BOX 9 - GRETN - LA 70054  
OFFICE 504.364.2678

EMAIL: [PURCHASING@JEFFPARISH.NET](mailto:PURCHASING@JEFFPARISH.NET)

WEBSITE: [WWW.JEFFPARISH.NET](http://WWW.JEFFPARISH.NET)





## About Bliss Products and Services, Inc.

Bliss Products and Services, Inc. has been in the recreation business since 1984. Not only have we survived over thirty years in an ever changing market, but we've undergone tremendous growth that has enabled our organization to expand from servicing a few states to being a formidable presence in the Southeast.

We take pride in this growth, which can be directly attributed to our "low key" and customer focused sales solutions. BPS provides exceptional customer service and quality recreational equipment. Thirty years in the industry has enabled us to develop long term relationships with vendors, clients and our sales force.



Our team has experience in design and development of all types of play environments. Our services include custom design consultations, site evaluations, budgeting, and installation. We are CPSI certified, industry trained, customer oriented, and committed to ensuring that our customers are treated as a part of our team.

You'll find our sales representatives, inside sales support, and install team are enthusiastic, responsive, and ready to work with you at your convenience.



## BPS Product Offerings

With the wide variety of products offered at Bliss Products and Services, Inc., (BPS) we are able to propose a solution for all of your recreation equipment needs: playground equipment, playground surfacing, shades, shelters, bleachers, dog parks, outdoor fitness, site amenities and athletic equipment.



### PLAYGROUND EQUIPMENT

BPS is the exclusive distributor for Play & Park Structures in the Southeast. Play & Park Structures is owned by Playcore, Inc. By joining the Playcore family of companies, BPS is able to ensure our customers always receive an outstanding product, a competitive price and excellent customer service.

We also represent : BigToys, UltraPlay, Sportsplay, and Elephant Play



### DOG PARKS, SITE AMENITIES, ETC.

By incorporating a dog park within your recreational area, you can create an environment that allows all family members to play, socialize, and get the physical activity so critical to health and well being.

Adding other site amenities, such as trash receptacles and benches, to your site, you can provide comfortability and cleanliness.



### SHADES, SHELTERS & MORE

Shade is becoming more and more of an important part of any recreation environment. Fabric shades over a playground, dog park, or over a pool can provide relief from the sun while being active. Metal or wood picnic shelters, paired with picnic tables and grills, are a great addition to serve as a gathering space for the community.





# CERTIFICATE OF LIABILITY INSURANCE

DATE (MM/DD/YYYY)

5/6/2022

THIS CERTIFICATE IS ISSUED AS A MATTER OF INFORMATION ONLY AND CONFERS NO RIGHTS UPON THE CERTIFICATE HOLDER. THIS CERTIFICATE DOES NOT AFFIRMATIVELY OR NEGATIVELY AMEND, EXTEND OR ALTER THE COVERAGE AFFORDED BY THE POLICIES BELOW. THIS CERTIFICATE OF INSURANCE DOES NOT CONSTITUTE A CONTRACT BETWEEN THE ISSUING INSURER(S), AUTHORIZED REPRESENTATIVE OR PRODUCER, AND THE CERTIFICATE HOLDER.

**IMPORTANT:** If the certificate holder is an **ADDITIONAL INSURED**, the policy(ies) must have **ADDITIONAL INSURED** provisions or be endorsed. If **SUBROGATION** IS **WAIVED**, subject to the terms and conditions of the policy, certain policies may require an endorsement. A statement on this certificate does not confer rights to the certificate holder in lieu of such endorsement(s).

<b>PRODUCER</b> HDINS, Inc dba Harry Daniel Insurance P.O. 2077 Cartersville, GA 30120  www.hdins.com AYP070759	<b>CONTACT NAME:</b> Meg Stover <b>PHONE (A/C, No. Ext):</b> 770-382-8954 <b>FAX (A/C, No):</b> 770-386-4081 <b>E-MAIL ADDRESS:</b> MStover@hdins.com  <b>INSURER(S) AFFORDING COVERAGE</b> <b>INSURER A:</b> Cincinnati Specialty Underwriters <b>INSURER B:</b> Twin City Fire Insurance Co. <b>INSURER C:</b> Sentinel Insurance Co, Ltd <b>INSURER D:</b> Certain Underwriters at Lloyd's, London <b>INSURER E:</b> <b>INSURER F:</b>
<b>INSURED</b> Bliss Products and Services, Inc. 6831 S. Sweetwater Rd. Lithia Springs GA 30122	<b>NAIC #</b> 13037 29459 11000

**COVERAGES****CERTIFICATE NUMBER:** 68131339**REVISION NUMBER:**

THIS IS TO CERTIFY THAT THE POLICIES OF INSURANCE LISTED BELOW HAVE BEEN ISSUED TO THE INSURED NAMED ABOVE FOR THE POLICY PERIOD INDICATED. NOTWITHSTANDING ANY REQUIREMENT, TERM OR CONDITION OF ANY CONTRACT OR OTHER DOCUMENT WITH RESPECT TO WHICH THIS CERTIFICATE MAY BE ISSUED OR MAY PERTAIN, THE INSURANCE AFFORDED BY THE POLICIES DESCRIBED HEREIN IS SUBJECT TO ALL THE TERMS, EXCLUSIONS AND CONDITIONS OF SUCH POLICIES. LIMITS SHOWN MAY HAVE BEEN REDUCED BY PAID CLAIMS.

INSR LTR	TYPE OF INSURANCE	ADDL INSD	SUBR WVD	POLICY NUMBER	POLICY EFF (MM/DD/YYYY)	POLICY EXP (MM/DD/YYYY)	LIMITS
A	<input checked="" type="checkbox"/> <b>COMMERCIAL GENERAL LIABILITY</b> <input type="checkbox"/> CLAIMS-MADE <input checked="" type="checkbox"/> OCCUR <input checked="" type="checkbox"/> Contract & XCU <input checked="" type="checkbox"/> \$5000 Deductible per claim GEN'L AGGREGATE LIMIT APPLIES PER: <input type="checkbox"/> POLICY <input checked="" type="checkbox"/> PROJECT <input type="checkbox"/> LOC <input type="checkbox"/> OTHER:			CSU0024940	1/17/2022	1/17/2023	EACH OCCURRENCE \$1000000 DAMAGE TO RENTED PREMISES (Ea occurrence) \$100000 MED EXP (Any one person) \$5000 PERSONAL & ADV INJURY \$1000000 GENERAL AGGREGATE \$3000000 PRODUCTS - COMP/OP AGG \$3000000 \$
C	<b>AUTOMOBILE LIABILITY</b> <input checked="" type="checkbox"/> ANY AUTO <input type="checkbox"/> OWNED AUTOS ONLY <input type="checkbox"/> SCHEDULED AUTOS <input checked="" type="checkbox"/> HIRED AUTOS ONLY <input checked="" type="checkbox"/> NON-OWNED AUTOS ONLY			20UECKN3349	7/29/2021	7/29/2022	COMBINED SINGLE LIMIT (Ea accident) \$1000000 BODILY INJURY (Per person) \$ BODILY INJURY (Per accident) \$ PROPERTY DAMAGE (Per accident) \$ \$
A	<b>UMBRELLA LIAB</b> <input checked="" type="checkbox"/> OCCUR <b>EXCESS LIAB</b> <input type="checkbox"/> CLAIMS-MADE DED RETENTION \$0			CSU0024939	1/17/2022	1/17/2023	EACH OCCURRENCE \$5000000 AGGREGATE \$5000000 Occur/Aggregate \$
B	<b>WORKERS COMPENSATION AND EMPLOYERS' LIABILITY</b> ANY PROPRIETOR/PARTNER/EXECUTIVE OFFICER/MEMBER EXCLUDED? (Mandatory in NH) If yes, describe under DESCRIPTION OF OPERATIONS below Y/N <input type="checkbox"/> N/A			20WECAT3242	7/29/2021	7/29/2022	<input checked="" type="checkbox"/> PER STATUTE <input type="checkbox"/> OTHER E.L. EACH ACCIDENT \$1000000 E.L. DISEASE - EA EMPLOYEE \$1000000 E.L. DISEASE - POLICY LIMIT \$1000000
C	<b>IM-Installation</b>			20SBAZT2793	4/19/2022	4/19/2023	\$100000
D	<b>Professional Liability</b>			HPL22-0066	4/28/2022	4/28/2023	\$1000000 per claim/aggregate

**DESCRIPTION OF OPERATIONS / LOCATIONS / VEHICLES** (ACORD 101, Additional Remarks Schedule, may be attached if more space is required)

--See Attached Remarks Schedule--

Information provided by this certificate (including any addendum/attachment) is strictly limited per State of Georgia statute OCGA 33-24-19.1

**CERTIFICATE HOLDER**Bliss Products & Services, Inc.  
6831 S. Sweetwater Rd.  
Lithia Springs GA 30122**CANCELLATION**

SHOULD ANY OF THE ABOVE DESCRIBED POLICIES BE CANCELLED BEFORE THE EXPIRATION DATE THEREOF, NOTICE WILL BE DELIVERED IN ACCORDANCE WITH THE POLICY PROVISIONS.

AUTHORIZED REPRESENTATIVE

H. L. Daniel

© 1988-2015 ACORD CORPORATION. All rights reserved.

ACORD 25 (2016/03)

The ACORD name and logo are registered marks of ACORD



## ADDITIONAL REMARKS SCHEDULE

AGENCY HDINS, Inc dba Harry Daniel Insurance		NAMED INSURED Bliss Products and Services, Inc. 6831 S. Sweetwater Rd. Lithia Springs GA 30122
POLICY NUMBER		
CARRIER	NAIC CODE	EFFECTIVE DATE:

### ADDITIONAL REMARKS

**THIS ADDITIONAL REMARKS FORM IS A SCHEDULE TO ACORD FORM,**

**FORM NUMBER:** 25      **FORM TITLE:** ACORD 25 (03/16)

**HOLDER:** Bliss Products & Services, Inc.

**ADDRESS:** 6831 S. Sweetwater Rd. Lithia Springs GA 30122

GENERAL LIABILITY: Additional insured for ongoing and completed operations, on a primary and non-contributory basis, when required by executed written contract per form, CSGA437 12/13.

GENERAL LIABILITY: Waiver of subrogation when required by executed written contract per form, CSGA4087 12/12.

AUTO LIABILITY: Additional insured, on a primary and non-contributory basis, and waiver of subrogation when required by executed written contract per form, HA9916 03/12.

EXCESS LIABILITY: General Liability, Auto Liability and Workers' Compensation policies are all listed on the Schedule of Underlying Insurance. Additional insured and waiver of subrogation per forms, CSCX100 02/13 and CSCX 207 10/20.

WORKERS' COMP: Waiver of subrogation when required by executed written contract per form, WC000313.





## State Licensing Board for Contractors

This is to Certify that:

is duly licensed and entitled to practice the following classifications



Expiration Date:

License No:

Witness our hand and seal of the Board dated,  
Baton Rouge, LA                      day of

WLB M. B. M. J.  
Director

See Mallett  
Chairman

Andy D. D.  
Treasurer

This License Is Not Transferrable



## About NRS

National Recreation Systems is a leader in Angle Frame Bleacher System manufacturing, design, and innovation. Our industry leadership is based on providing unsurpassed service to our customers, quality products at competitive prices, and a professional “We Do What We Say We’ll Do” attitude.

Our promise to our customers:

NRS is committed to fabricating quality products and meeting customer contract requirements in a timely manner. As a demonstration of our commitment, NRS will strive to provide customers with high-quality installations and customer service which exceed expectations and promote customer satisfaction.

Find our bleachers at various universities, high schools, race tracks, parks, ball field diamonds and more in every state and numerous countries across the world. Our bleacher systems, press boxes, picnic tables, and benches have become the industry’s benchmarks. With over twenty years in the industry and a winning dealer network, we will continue to provide our customers with the latest in quality aluminum seating.





## **WARRANTY**

National Recreation Systems, Inc. ("company") warrants to owner ("owner") products to be free from defects in material and workmanship, after proper assembly, and under normal conditions for the type of product, according to the following terms and conditions:

- A) 1 YEAR WARRANTY - failure of structural strength of any framework component.
- B) 5 YEAR WARRANTY - aluminum plank will not blister, crack, peel or flake due to weather, temperature changes, continued exposure to rain, snow or U.V. rays from the sun.
- C) The warranty period shall begin from the date title to the goods passes to the owner (typically F.O.B. Factory).
- D) Damages resulting from improper usage, abuse, alteration, negligence, transportation, fire, lightning, caustic chemicals, acts of God, improper maintenance or other causes beyond the control of the "company" are excluded.
- E) Any claim for defects covered by warranty shall be promptly presented, in writing, to NATIONAL RECREATION SYSTEMS, INC., Fort Wayne, IN 46858-1487, Attention: Warranty Service Department. The "company" then shall provide "owner" written instruction for remedy.
- F) Should defects covered by warranty occur the "company" shall repair or replace, at its option and at no cost to the "owner", the defective "product" or defective portion thereof subject to the terms and conditions of the warranty.

The "company" shall not be liable to the "owner" for consequential damages for breach of any written or implied warranty on its "products", and shall not be liable to the "owner" for any incidental damages, for breach of any written or implied warranty unless incurred by the "owner" because the "company" did not perform any remedy hereunder within a reasonable time or because the "company" has imposed an unreasonable duty upon the "owner" as a condition of securing any remedy hereunder. "Owner's" exclusive remedy and damages shall be limited to the repair or replacement of defective "products" as provided herein. Some states do not allow the exclusion or limitation of incidental or consequential damages, so the above limitation or exclusion may not apply.

This writing contains the entire agreement between the "company" and the "owner", and the warranties expressed in the first paragraph herein excludes all other warranties, such as those made by dealers, distributors, contractors, or applicators of the "products" of the "company".

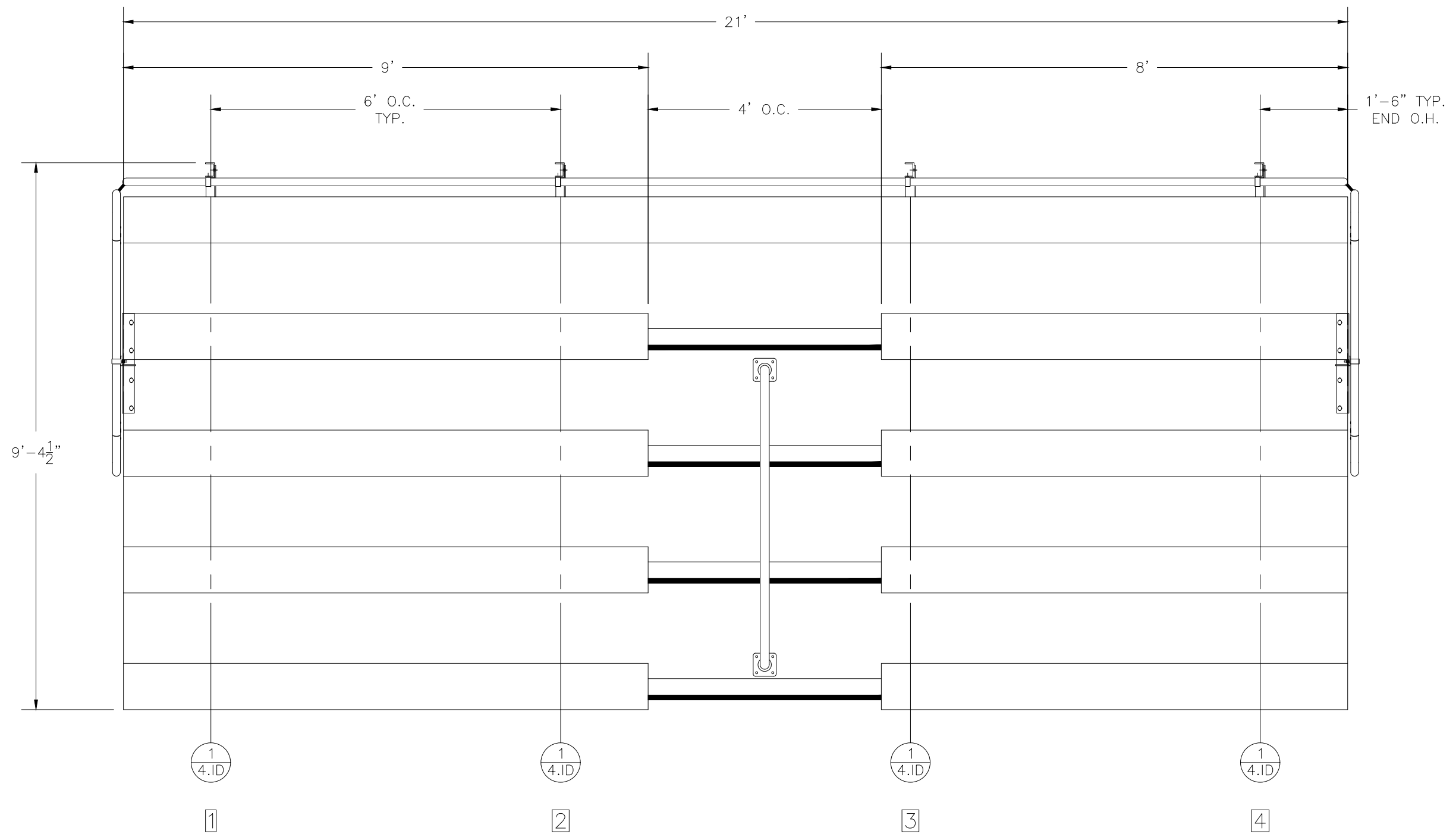
All warranties, either expressed or implied, of merchantability of fitness for a particular purpose are limited to the term hereof. Some states do not allow limitations in how long an implied warranty lasts, therefore, the above limitation may not apply to the "owner".

This warranty gives you specific legal rights, and you may also have other rights, which vary from state to state.

Effective on any product shipped on or after 10/2012.







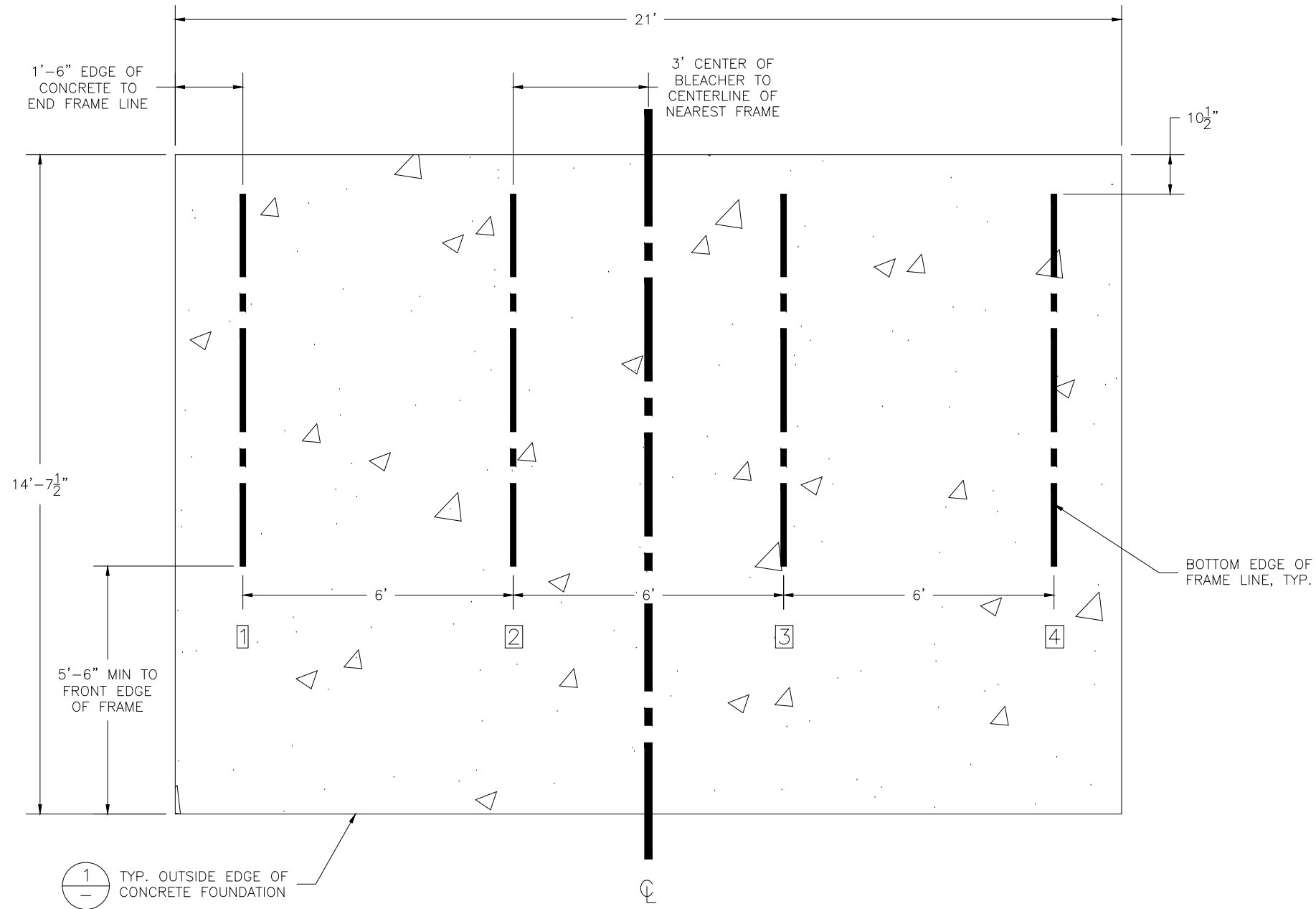
SECTION LENGTH	GROSS SEATS	ACTUAL SEATS	NO. OF ROWS	NET SEATS
21	14.00	14.00	1	14
9	6.00	6.00	4	24
8	5.33	5.00	4	20
NET SEATS				58
WHEELCHAIR SPACES				0
TOTAL NET SEATING CAPACITY				58
(BASED ON 18" PER SEAT)				



PH: 888-568-9064 FAX: 260-482-7449 WWW.BLEACHERS.NET

This drawing and all information contained herein is the property of NATIONAL RECREATION SYSTEMS, INC. and is not to be reproduced without the express written permission of this manufacturer. We assume no responsibility for unauthorized use of this drawing. NATIONAL RECREATION SYSTEMS, INC. is not responsible for local permits and occupancy requirements.

MODEL: NA-0521DLX_VP				
DESCRIPTION: NON-ELEV. 5 ROW x 21'-0" SEATING PLAN				
DRAWN BY: HIT	DATE: 1/4/21	REVISION: 0	SCALE: N.T.S.	SHEET NUMBER: 2.TD



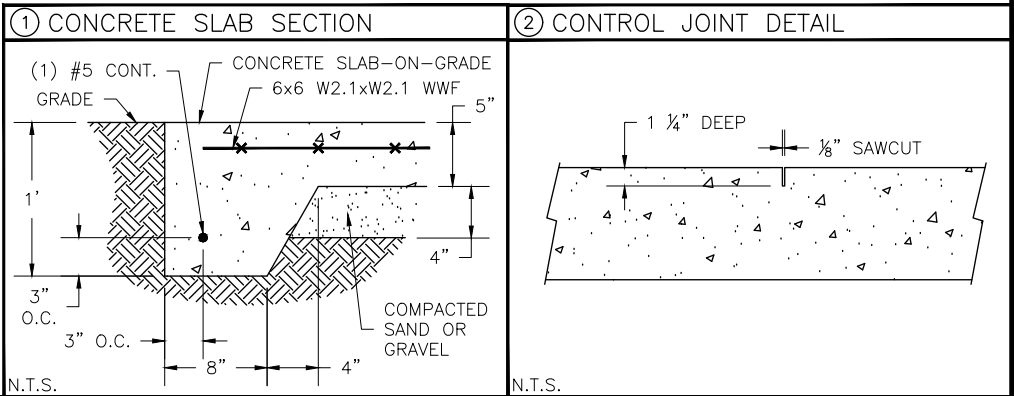
CONCRETE FOUNDATION SPECIFICATIONS

**SCOPE:**  
Foundation construction is not part of NATIONAL RECREATION SYSTEMS, INC's., scope of work unless noted otherwise in the contract documents. The OWNER shall review the foundation design with local code authorities and coordinate with NRS, Inc.

**FOUNDATION DESIGN & ANCHORS:**  
1) The foundation designs are based on the following:  
a) Minimum presumed soil bearing of 2000 psf.  
b) Bleacher frame dead and live load of 700 lbs./ft.  
c) Bleacher frame wind uplift of 250 lbs./ft.  
2) Unless otherwise specified on the drawings the bleacher frames shall be attached to concrete with a 1/2" dia. x 3 3/4" wedge type expansion anchor. The anchors shall be embedded a minimum of 2" into the concrete.

**CONCRETE SPECIFICATIONS:**  
1) All concrete construction shall be in accordance with *ACI 318.08*.  
2) All concrete shall be air-entrained using an air entraining admixtruing meeting *ASTM C620*. Total air content: 5%-7% per *ASTM C173*.  
3) All concrete shall have a minimum 28-day strength of Fc=3000psi. Concrete shall have air-entrainment  
4) A 1/4" bituminous expansion joint material shall be placed between strip and slab foundations when adjacent to each other.  
5) The depressions in the top of the foundations between high spots shall not exceed 3/16" below 10-foot long straightedge. The 10-foot straightedge method used to measure foundation flatness shall be in accordance with *ACI 302.1R-04 "Guide for Concrete Floor and Slab Construction"*.

**CONCRETE SLAB RECOMMENDED SPECIFICATIONS:**  
1) Concrete slab shall have a minimum thickness of 5" (some areas may require 6") and placed on 4" of compacted gravel or compacted sub base.  
2) NRS, INC., recommends that the concrete slab be reinforced with 6x6-W2.1xW2.1 welded wire fabric at 1 1/2" concrete cover from the top. In lieu of welded wire fabric, steel fiber substitution requires OWNER approval and his understanding of potential maintenance issues.  
3) Contractor may substitute blended fiber reinforcing, provided the blend consists of multifilament polypropylene fibers and cold drawn steel wire fibers. Novamesh 950 or approved equivalent, applied at a dosage rate of 5lb/CY unless specified otherwise or a different recommendation is made by the manufacturer.  
4) Crack control joints shall be sawed into slab to form approximate square patterns. The maximum spacing for control joints shall not exceed 13'-6", UNLESS INDICATED OTHERWISE. The bleacher frames shall not be set on control joints. The designer shall contact NRS to coordinate joint spacing requirements with the specific bleacher design.  
5) The slab may be sloped a maximum of 1/8 inch per foot for drainage. The maximum overall out of level slope for the slab perpendicular to the seats (front to rear) shall not exceed 2" and parallel to the seats (end to end) shall not exceed 4".





**National Recreation Systems**  
A PLAYCORE Company

PH: 888-568-9064 FAX: 260-482-7449 WWW.BLEACHERS.NET

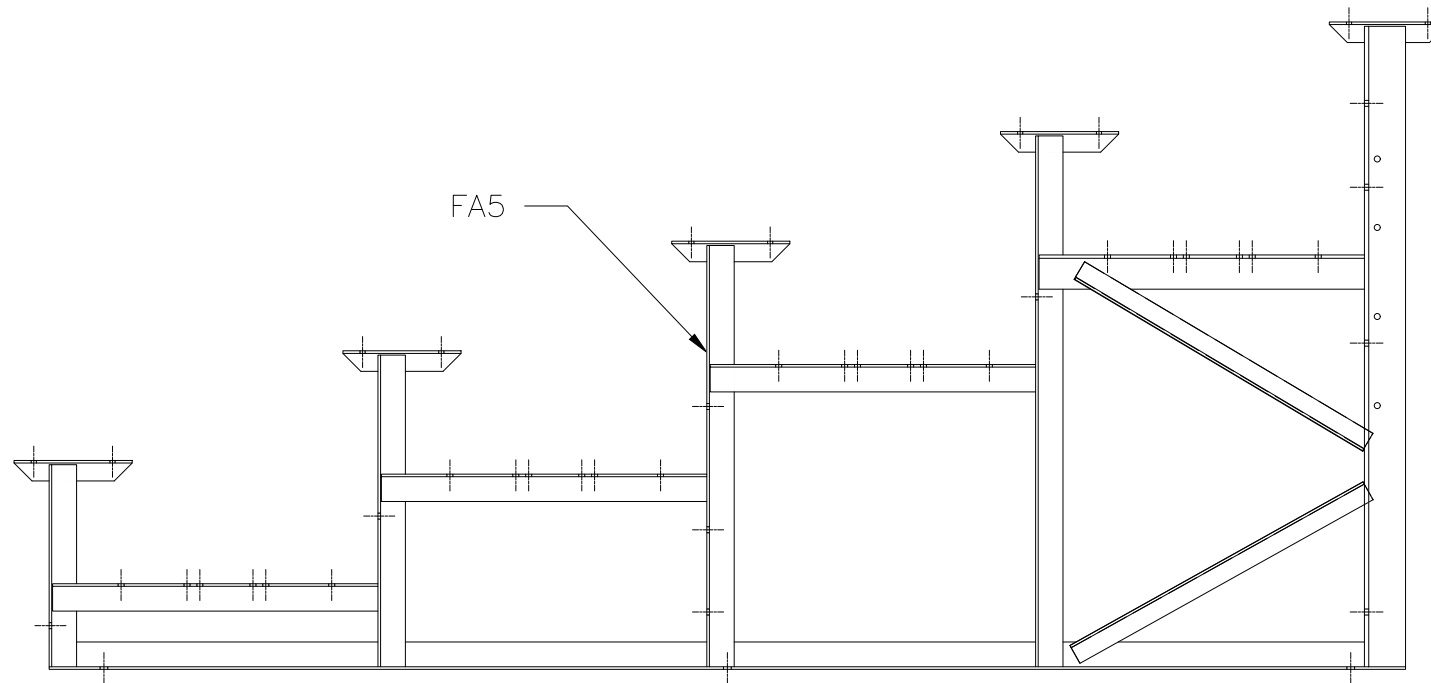
This drawing and all information contained herein is the property of NATIONAL RECREATION SYSTEMS, INC. and is not to be reproduced without the express written permission of this manufacturer. We assume no responsibility for unauthorized use of this drawing. NATIONAL RECREATION SYSTEMS, INC. is not responsible for local permits and occupancy requirements.

MODEL: NA-0521DLX_VP				
DESCRIPTION: NON-ELEV. 5 ROW x 21'-0" FOUNDATION PLAN				
DRAWN BY: HIT	DATE: 1/4/21	REVISION: 0	SCALE: N.T.S.	SHEET NUMBER: 3.FP



1  
4.ID

FRAME LINES 1, 2, 3, 4



PH: 888-568-9064 FAX: 260-482-7449 WWW.BLEACHERS.NET

This drawing and all information contained herein is the property of NATIONAL RECREATION SYSTEMS, INC. and is not to be reproduced without the express written permission of this manufacturer. We assume no responsibility for unauthorized use of this drawing. NATIONAL RECREATION SYSTEMS, INC. is not responsible for local permits and occupancy requirements.

MODEL: NA-0521DLX\_VP

DESCRIPTION: NON-ELEV. 5 ROW x 21'-0" FRAME IDENTIFICATION

DRAWN BY: HIT

DATE: 1/4/21

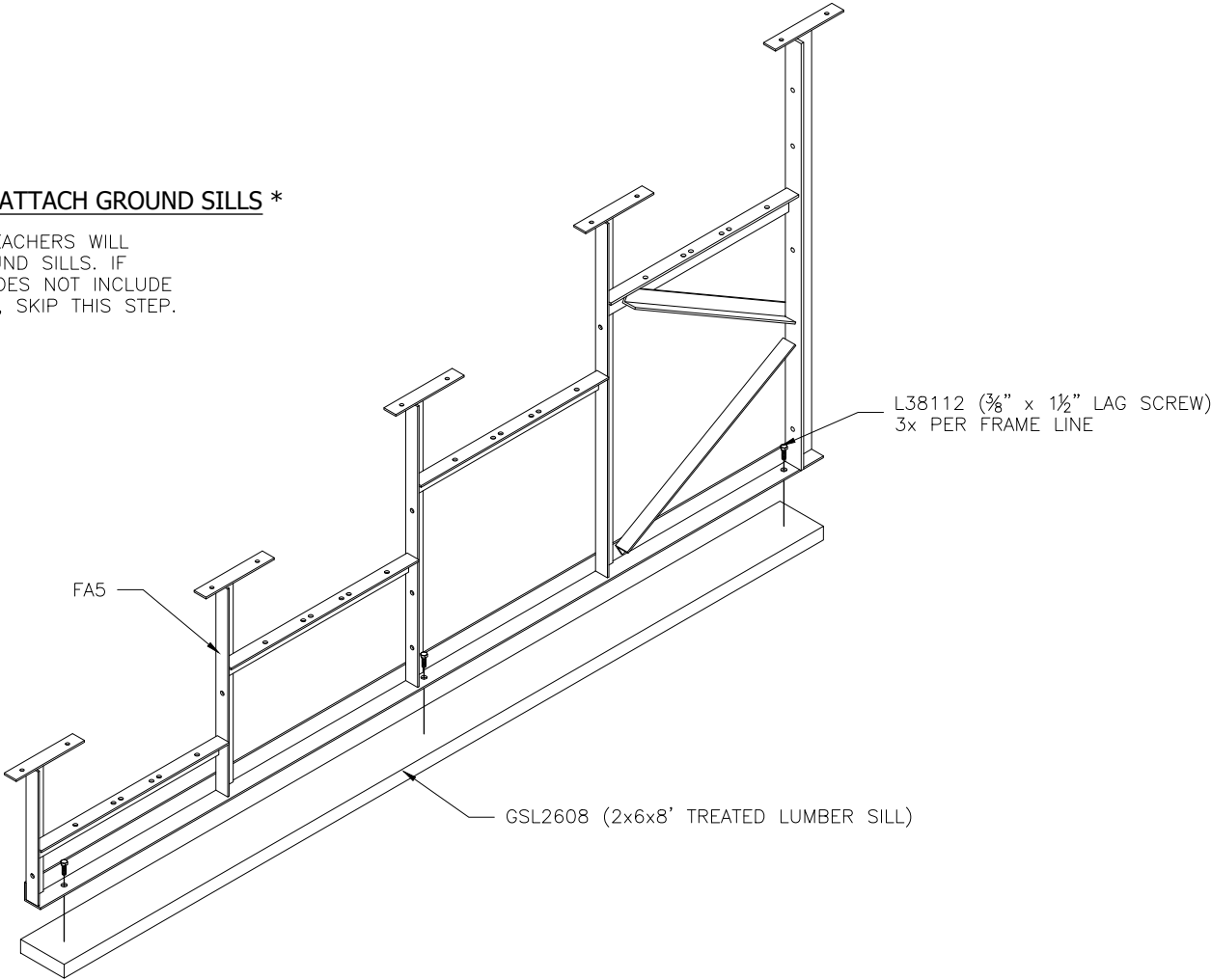
REVISION: 0

SCALE: N.T.S.

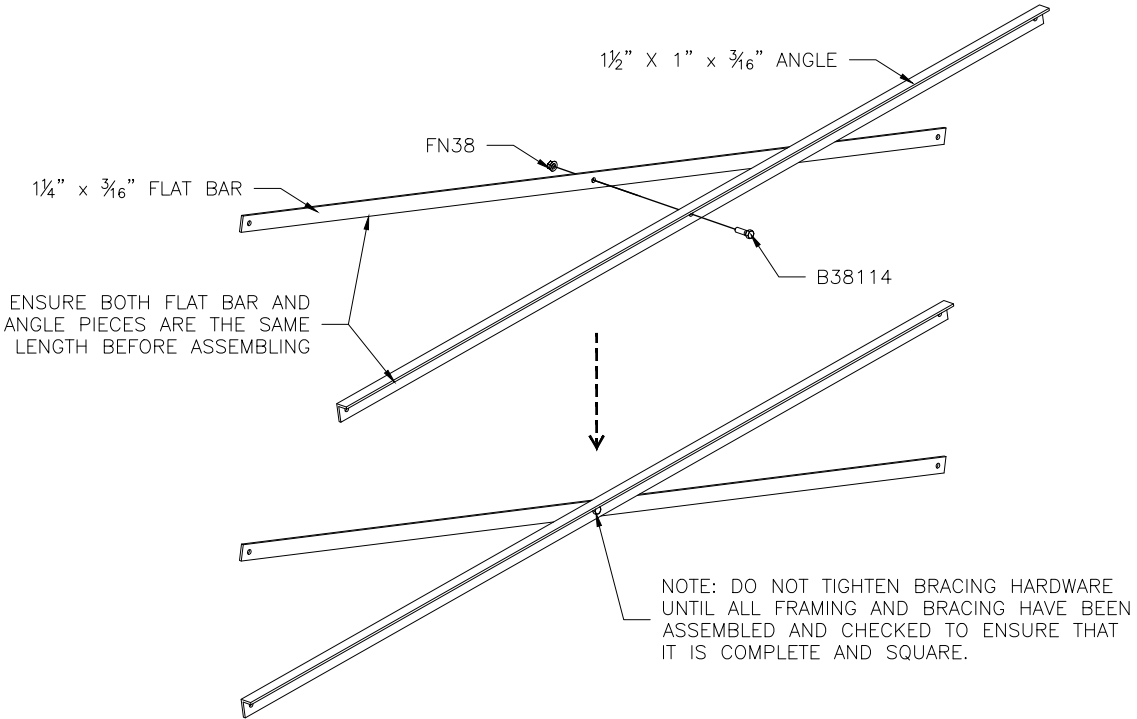
SHEET NUMBER: 4.ID

**(OPTIONAL) ATTACH GROUND SILLS \***

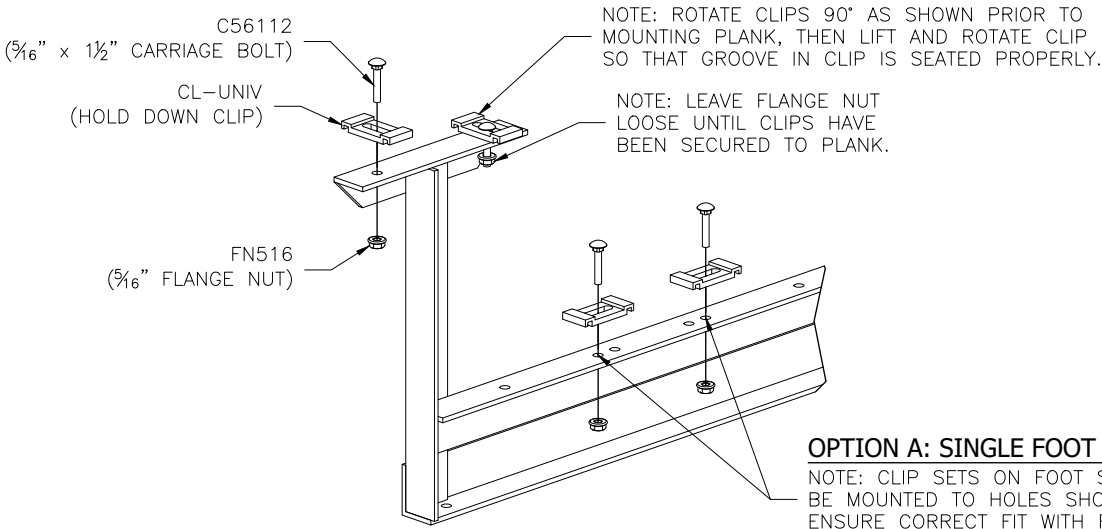
\*NOT ALL BLEACHERS WILL RECEIVE GROUND SILLS. IF YOUR UNIT DOES NOT INCLUDE THIS FEATURE, SKIP THIS STEP.



**PRE-ASSEMBLE X-BRACE PAIR(S)**

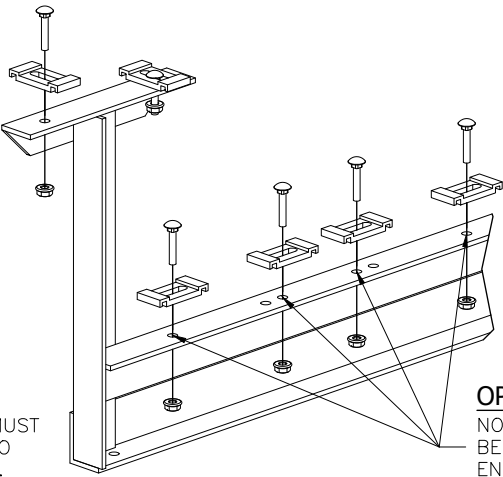


**ONCE FRAMING IS COMPLETE,  
PRE-ASSEMBLE CLIP SETS ON BLEACHER FRAMES**



**OPTION A: SINGLE FOOT BOARDS**

NOTE: CLIP SETS ON FOOT SUPPORTS MUST BE MOUNTED TO HOLES SHOWN HERE TO ENSURE CORRECT FIT WITH FOOT PLANK.



**OPTION B: DOUBLE FOOT BOARDS**

NOTE: CLIP SETS ON FOOT SUPPORTS MUST BE MOUNTED TO HOLES SHOWN HERE TO ENSURE CORRECT FIT WITH FOOT PLANK.



PH: 888-568-9064 FAX: 260-482-7449 WWW.BLEACHERS.NET

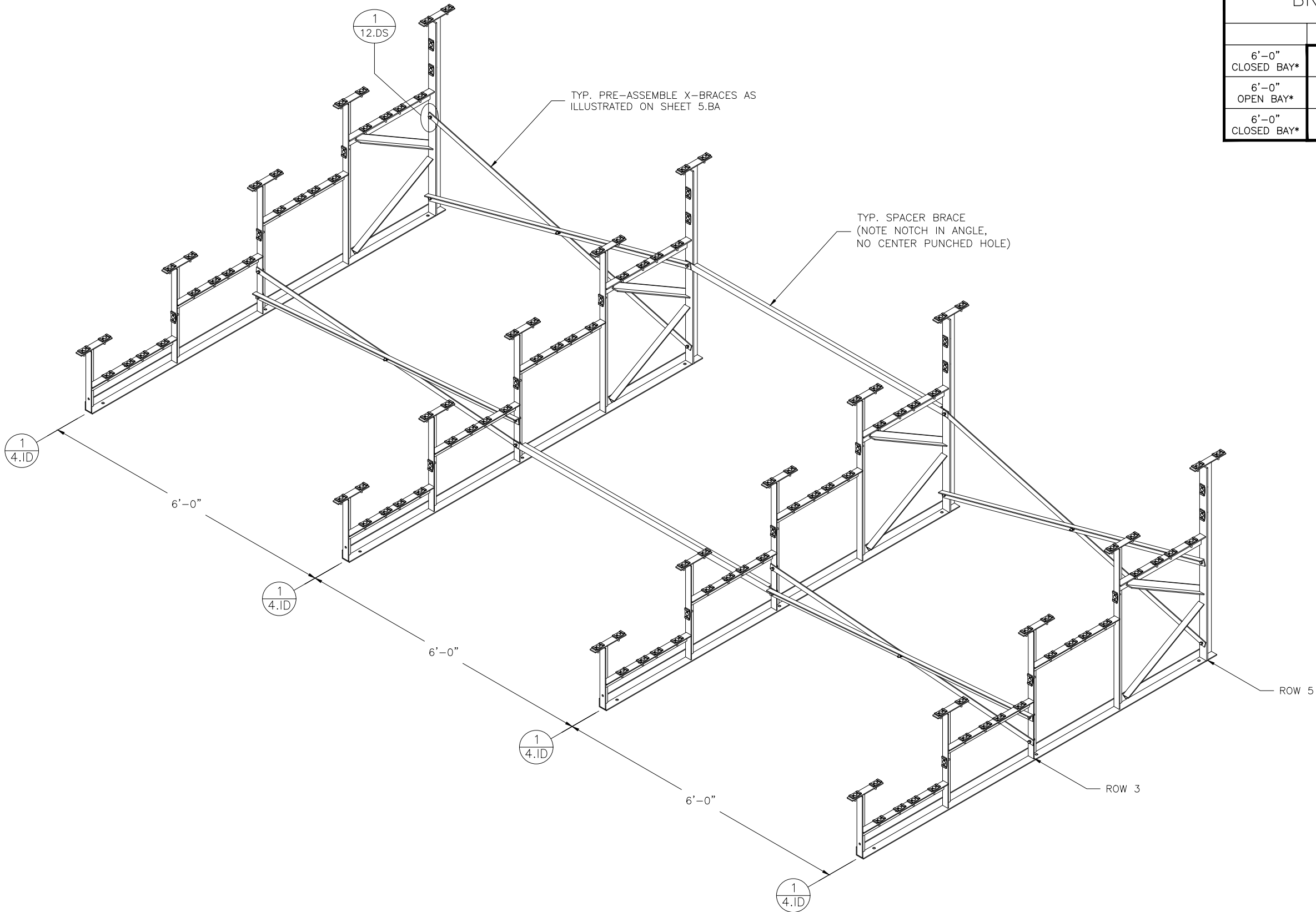
This drawing and all information contained herein is the property of NATIONAL RECREATION SYSTEMS, INC. and is not to be reproduced without the express written permission of this manufacturer. We assume no responsibility for unauthorized use of this drawing. NATIONAL RECREATION SYSTEMS, INC. is not responsible for local permits and occupancy requirements.

MODEL: NA-0521DLX_VP				
DESCRIPTION: NON-ELEV. 5 ROW x 21'-0" ASSEMBLY PREP				
DRAWN BY: HIT	DATE: 1/4/21	REVISION: 0	SCALE: N.T.S.	SHEET NUMBER: 5.BA



BRACING CHART

	ROW 3	ROW 5
6'-0" CLOSED BAY*	6'-1 <sup>7</sup> / <sub>8</sub> " X-BRACE	6'-4 <sup>1</sup> / <sub>8</sub> " X-BRACE
6'-0" OPEN BAY*	6'-1 <sup>1</sup> / <sub>2</sub> " SPACER BRACE	6'-1 <sup>1</sup> / <sub>2</sub> " SPACER BRACE
6'-0" CLOSED BAY*	6'-1 <sup>7</sup> / <sub>8</sub> " X-BRACE	6'-4 <sup>1</sup> / <sub>8</sub> " X-BRACE



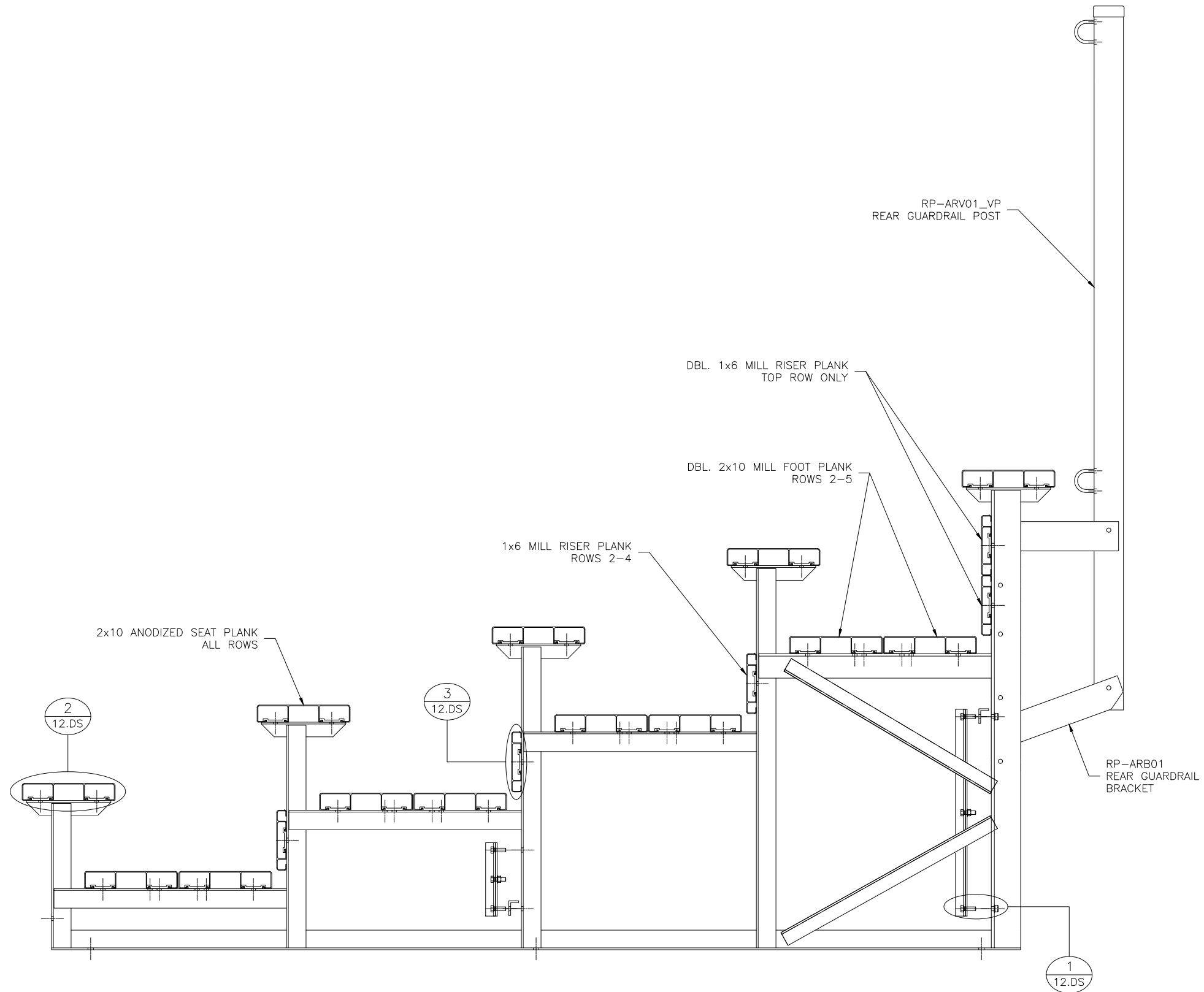
\* NOTE:  
"CLOSED BAY" RECEIVES ONLY X-BRACING.  
"OPEN BAY" RECEIVES ONLY SPACER (STRAIGHT) BRACING.



PH: 888-568-9064 FAX: 260-482-7449 WWW.BLEACHERS.NET

This drawing and all information contained herein is the property of NATIONAL RECREATION SYSTEMS, INC. and is not to be reproduced without the express written permission of this manufacturer. We assume no responsibility for unauthorized use of this drawing. NATIONAL RECREATION SYSTEMS, INC. is not responsible for local permits and occupancy requirements.

MODEL: NA-0521DLX_VP				
DESCRIPTION: NON-ELEV. 5 ROW x 21'-0" ASSEMBLY - BRACING				
DRAWN BY: HIT	DATE: 1/4/21	REVISION: 0	SCALE: N.T.S.	SHEET NUMBER: 6,BA



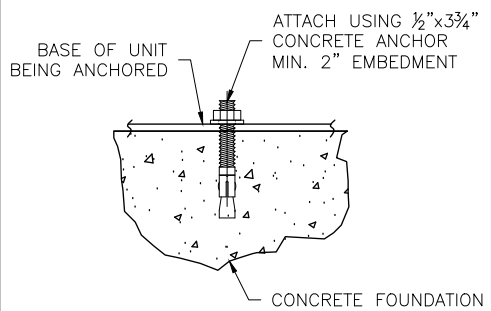
PH: 888-568-9064 FAX: 260-482-7449 WWW.BLEACHERS.NET

This drawing and all information contained herein is the property of NATIONAL RECREATION SYSTEMS, INC. and is not to be reproduced without the express written permission of this manufacturer. We assume no responsibility for unauthorized use of this drawing. NATIONAL RECREATION SYSTEMS, INC. is not responsible for local permits and occupancy requirements.

MODEL: NA-0521DLX_VP				
DESCRIPTION: NON-ELEV. 5 ROW x 21'-0" ASSEMBLY SECTION VIEW				
DRAWN BY: HIT	DATE: 1/4/21	REVISION: 0	SCALE: N.T.S.	SHEET NUMBER: 7.BA

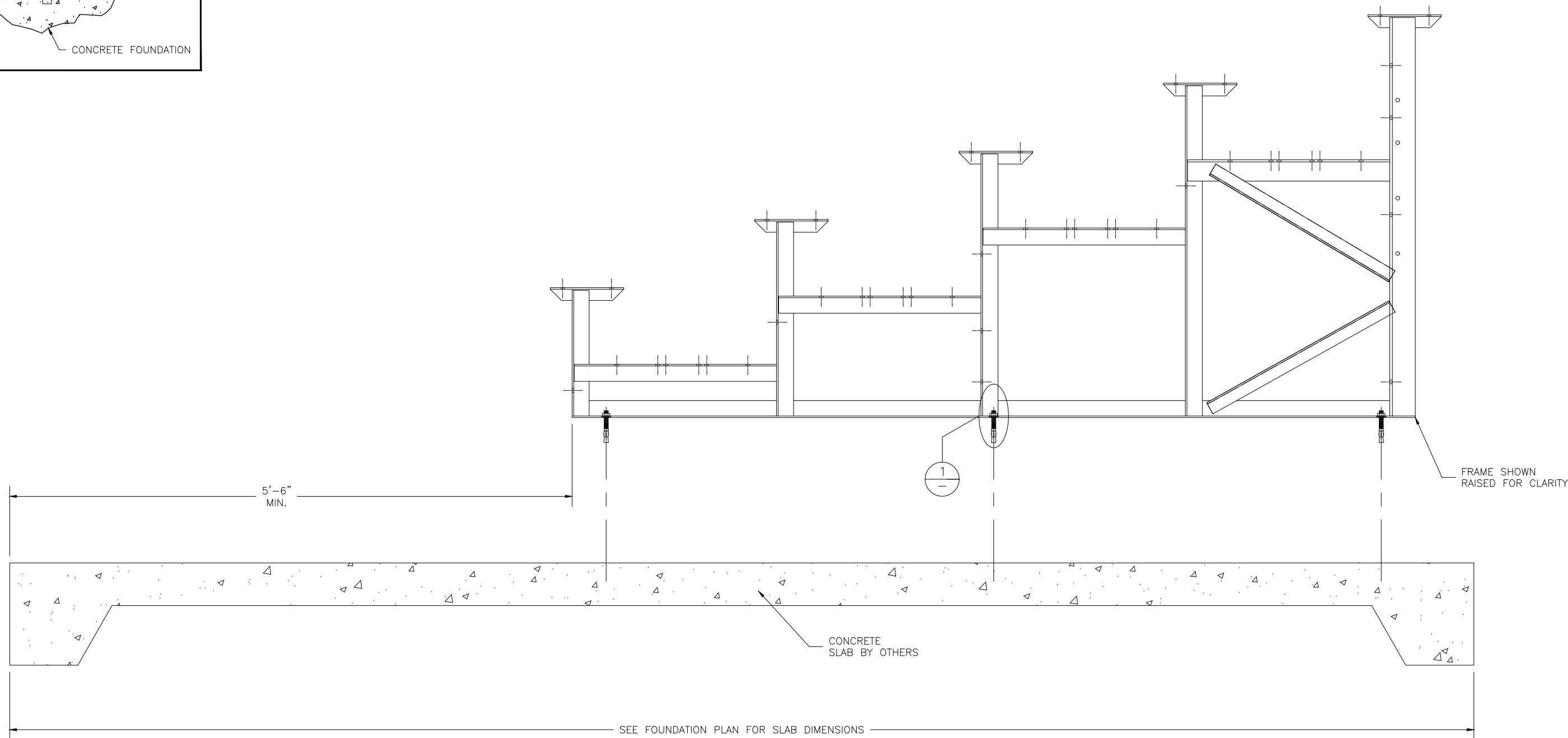


① WEDGE ANCHOR DETAIL — 3 3/4"



N.T.S.

(OPTIONAL) ANCHOR BLEACHER TO CONCRETE FOUNDATION \*



\* CONCRETE WEDGE ANCHORS NOT INCLUDED WITH ALL UNITS. IF USING OTHER ANCHORING SYSTEM, SKIP THIS STEP AND REFER TO INSTRUCTIONS SPECIFIC TO THE ANCHORING SYSTEM PURCHASED FOR YOUR UNIT.



PH: 888-568-9064 FAX: 260-482-7449 WWW.BLEACHERS.NET

This drawing and all information contained herein is the property of NATIONAL RECREATION SYSTEMS, INC. and is not to be reproduced without the express written permission of this manufacturer. We assume no responsibility for unauthorized use of this drawing. NATIONAL RECREATION SYSTEMS, INC. is not responsible for local permits and occupancy requirements.

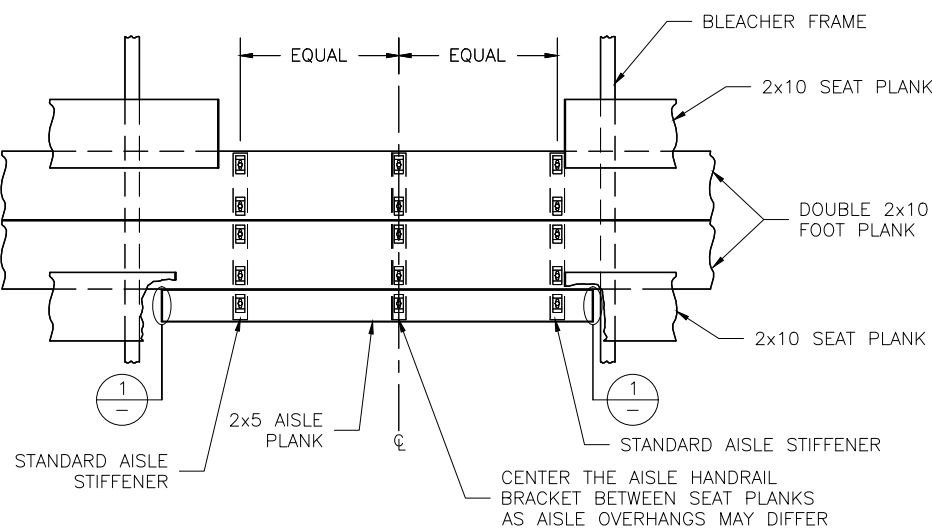
MODEL: NA-0521DLX_VP		DESCRIPTION: NON-ELEV. 5 ROW BLEACHER ANCHORING PLAN			
DRAWN BY: HIT	DATE: 1/4/21	REVISION: 0	SCALE: N.T.S.	SHEET NUMBER: 8,AP	





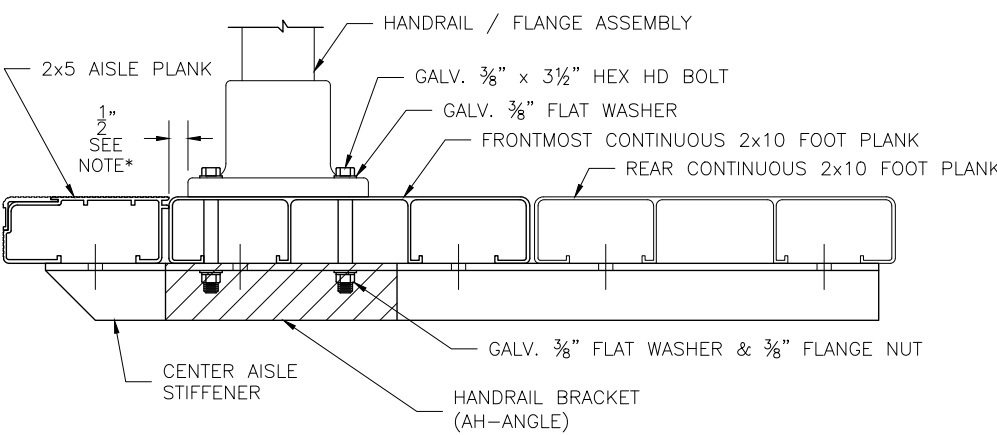
DETAIL A

AISLE PLAN TYP. ALL ROWS



DETAIL B

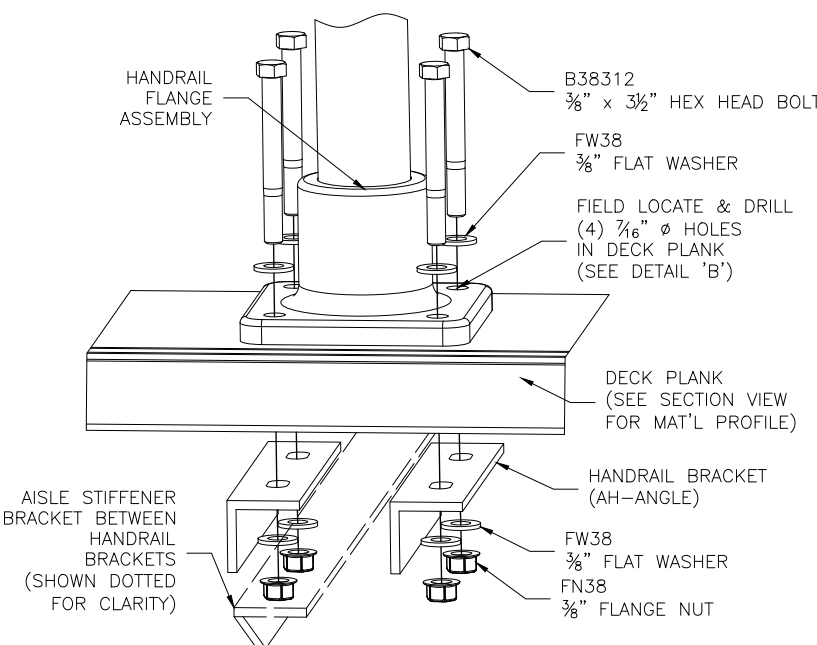
FRONT HANDRAIL ASSEMBLY SHOWN  
LOCATE OVER REAR FOOT PLANK FOR REAR ASSEMBLY



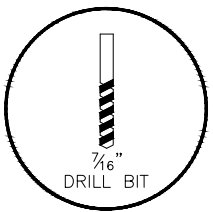
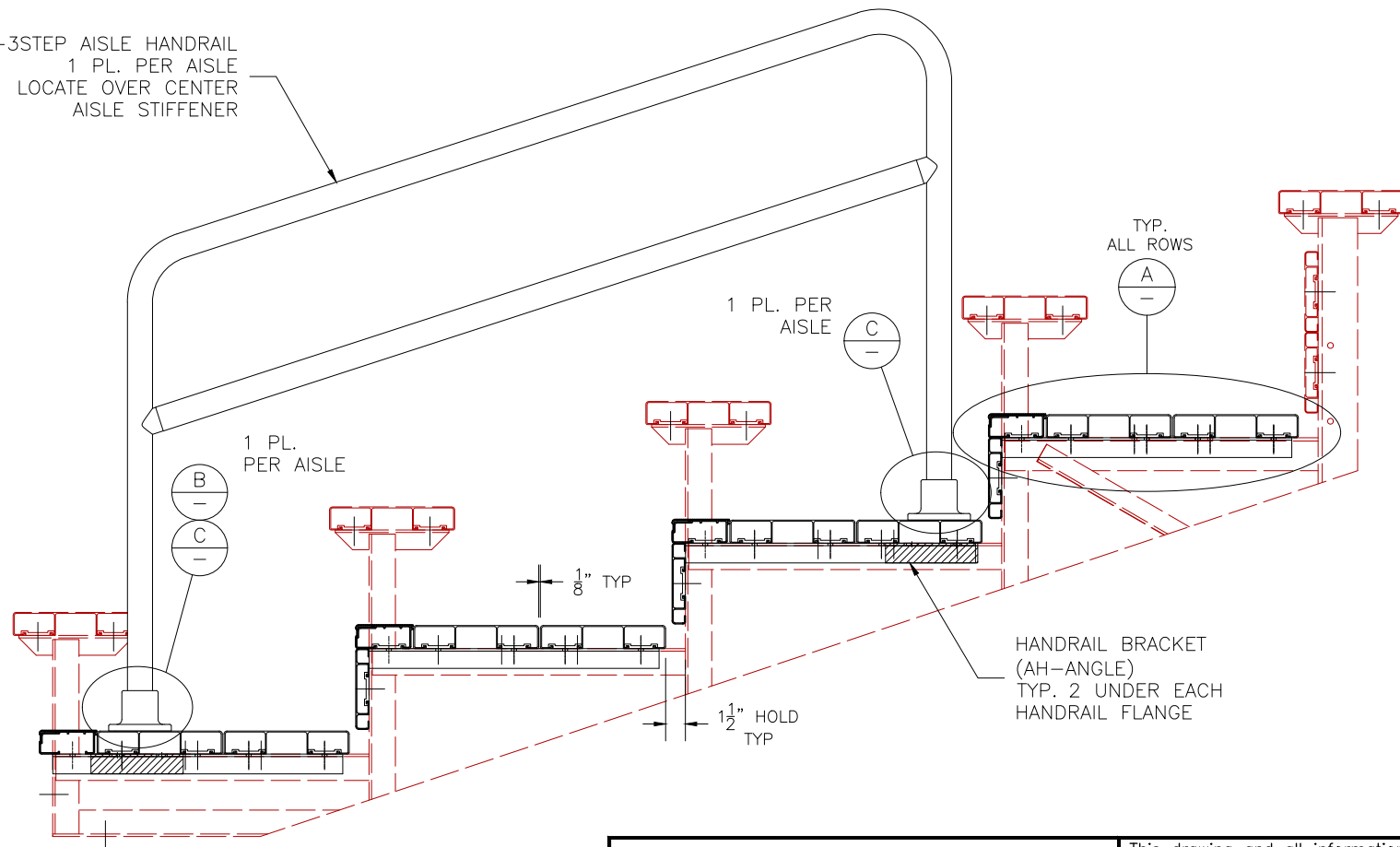
\*NOTE: ALIGN EDGE OF FLANGE APPROX. 1/2" FROM THE LEADING EDGE OF THE FRONTMOST CONTINUOUS 2x10 FOOT PLANK (NOT THE 2x5 AISLE STEP PLANK). SLIGHTLY ADJUST FLANGE LOCATION, IF NECESSARY, SO THAT THE BOLT HOLE IS NOT DRILLED INTO A VERTICAL LEG OF THE PLANK. DRILL 7/16" HOLES (FOR 3/8" BOLT). ASSEMBLE AS SHOWN USING BOLTS, FLAT WASHERS, & FLANGE NUTS.

DETAIL C

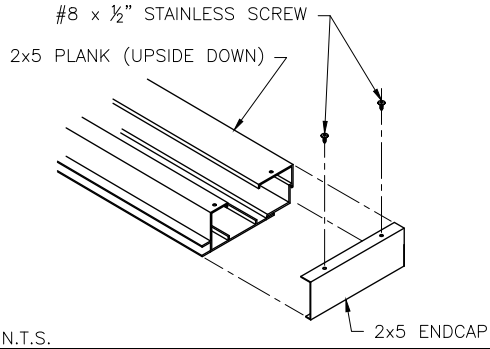
TYPICAL HANDRAIL MOUNTING HARDWARE



AH-3STEP AISLE HANDRAIL  
1 PL. PER AISLE  
LOCATE OVER CENTER  
AISLE STIFFENER



① TYP. 2x5 ENDCAP ATTACHMENT

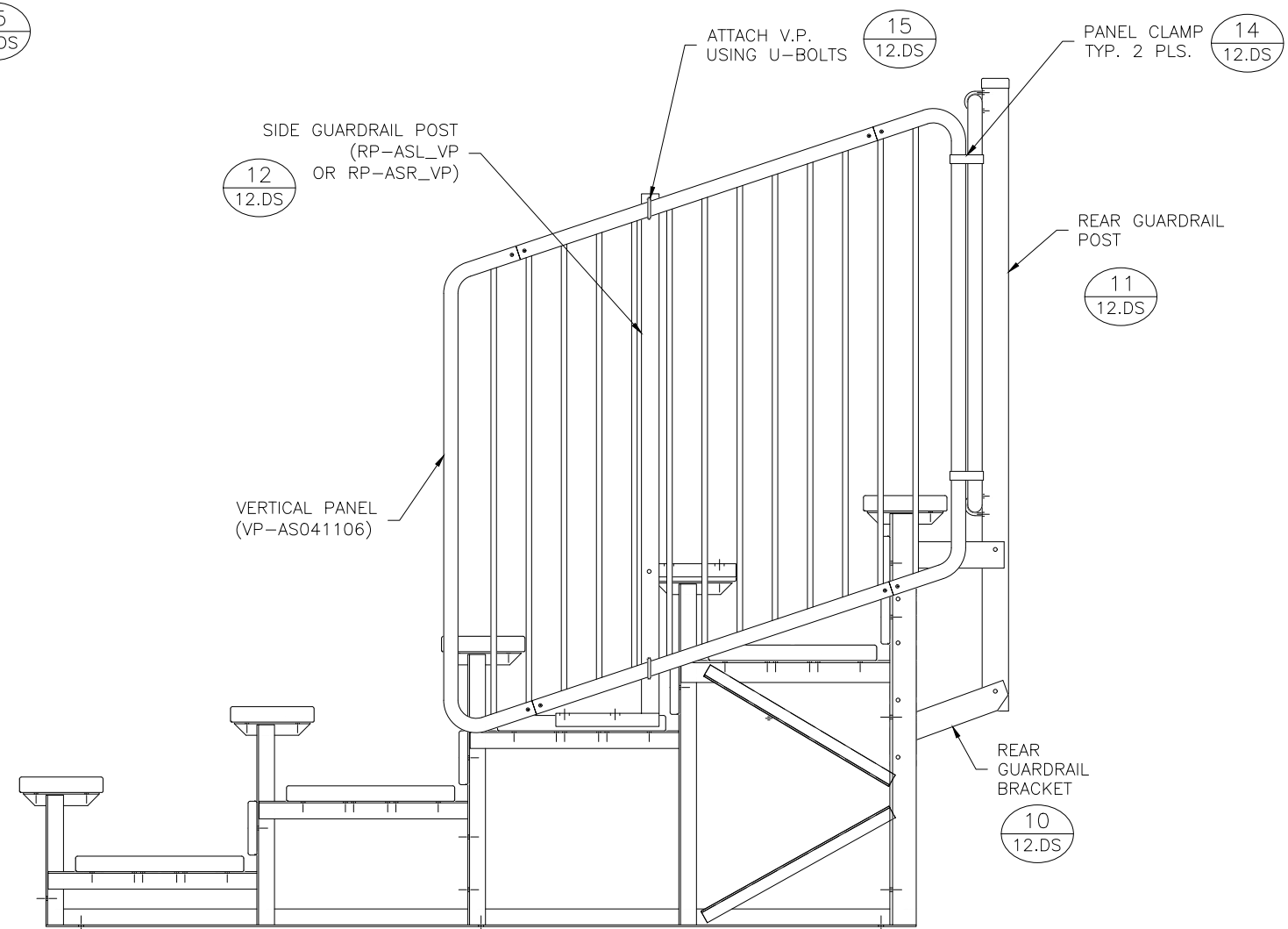
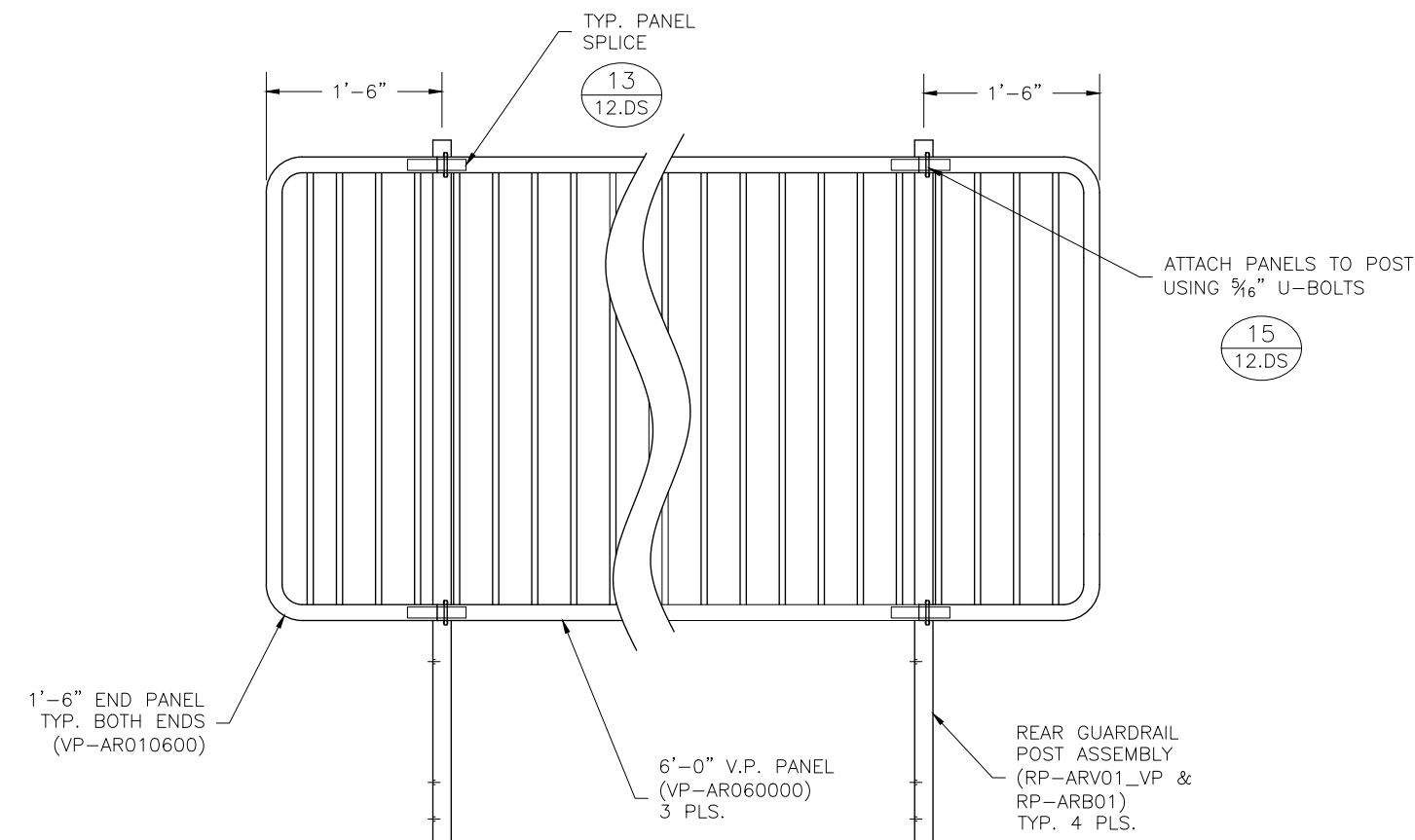


PH: 888-568-9064 FAX: 260-482-7449 WWW.BLEACHERS.NET

This drawing and all information contained herein is the property of NATIONAL RECREATION SYSTEMS, INC. and is not to be reproduced without the express written permission of this manufacturer. We assume no responsibility for unauthorized use of this drawing. NATIONAL RECREATION SYSTEMS, INC. is not responsible for local permits and occupancy requirements.

MODEL:	NA-0521DLX_VP			
DESCRIPTION:	NON-ELEV. 5 ROW VERTICAL AISLE ASSEMBLY			
DRAWN BY:	HIT	DATE:	1/4/21	REVISION: 0
SCALE:	N.T.S.	SHEET NUMBER:	10.VA	

REAR GUARDRAIL  
(AS VIEWED FROM REAR)



PH: 888-568-9064 FAX: 260-482-7449 WWW.BLEACHERS.NET

This drawing and all information contained herein is the property of NATIONAL RECREATION SYSTEMS, INC. and is not to be reproduced without the express written permission of this manufacturer. We assume no responsibility for unauthorized use of this drawing. NATIONAL RECREATION SYSTEMS, INC. is not responsible for local permits and occupancy requirements.

MODEL: NA-0521DLX\_VP

DESCRIPTION: NON-ELEV. 5 ROW x 21'-0" GUARDRAIL ASSEMBLY

DRAWN BY: HIT

DATE: 1/4/21

REVISION: 0

SCALE: N.T.S.

SHEET NUMBER: 11.GR



<p>① TYP. BRACE CONN. – 1¼ BOLT</p> <p>BLEACHER FRAME TYP X-BRACING 3/8" x 1/4" HEX HD. BOLT &amp; 3/8" FLANGE NUT</p> <p>N.T.S.</p>	<p>② TYP. 2x10 PLANK ATTACHMENT</p> <p>5/16" x 1 1/2" CARRIAGE BOLT TYP. HOLD DOWN CLIP 5/16" FLANGE NUT</p> <p>N.T.S.</p>	<p>③ TYP. 1x6 PLANK ATTACHMENT</p> <p>TYP. HOLD DOWN CLIP 5/16" x 1 1/2" CARRIAGE BOLT 5/16" FLANGE NUT</p> <p>N.T.S.</p>	<p>④ TYP. 2x10 ENDCAP ATTACHMENT</p> <p>#8 x 1/2" STAINLESS SCREW 2x10 PLANK (UPSIDE DOWN) 2x10 ENDCAP</p> <p>N.T.S.</p>	<p>⑤ TYP. 1x6 ENDCAP ATTACHMENT</p> <p>#8 x 1/2" STAINLESS SCREW 1x6 PLANK (UPSIDE DOWN) 1x6 ENDCAP</p> <p>N.T.S.</p>	<p>⑥ DBL. 2x10 ENDCAP ATTACHMENT</p> <p>#8 x 1/2" STAINLESS SCREW 2x10 PLANK (UPSIDE DOWN) DBL. 2x10 ENDCAP</p> <p>N.T.S.</p>
<p>⑦ DBL. 1x6 ENDCAP ATTACHMENT</p> <p>#8 x 1/2" STAINLESS SCREW 1x6 PLANK (UPSIDE DOWN) DBL. 1x6 ENDCAP</p> <p>N.T.S.</p>	<p>⑧ TYP. 2x10 SPLICE CONN.</p> <p>2x10 PLANK (UPSIDE DOWN) 3/16" POP RIVET TO (1) PLANK ONLY 4 REQ. 2" 5" 2" SPLICE PAIR (UPSIDE DOWN) 2x10 PLANK (UPSIDE DOWN) STAGGER SPLICE</p> <p>N.T.S.</p>	<p>⑨ TYP. 1x6 SPLICE CONN.</p> <p>1x6 PLANK 1x6 SPLICE 3/16" POP RIVET 1x6 PLANK</p> <p>N.T.S.</p>	<p>⑩ REAR GUARDRAIL BRACKET ATTACH</p> <p>REAR OF BLEACHER FRAME ATTACH GUARDRAIL BRACKET TO REAR OF BLEACHER FRAME USING 3/8" x 1/4" HEX HEAD BOLT &amp; 3/8" FLANGE NUT (TYP. 4 PLS.) REAR GUARDRAIL BRACKET</p> <p>N.T.S.</p>	<p>⑪ REAR GUARDRAIL POST ATTACH</p> <p>GUARDRAIL VERTICAL POST ATTACH GUARDRAIL VERTICAL POST TO BRACKET USING 3/8" x 1/4" HEX HEAD BOLT &amp; 3/8" FLANGE NUT (TYP. 2 PLS.) NOTE: VERTICAL MUST BE SQUARE TO ATTACHMENT ARM OF BRACKET REAR GUARDRAIL BRACKET</p> <p>N.T.S.</p>	<p>⑫ SIDE GD. RAIL POST INSTALLATION</p> <p>ALIGN UPPER ARM OF POST w/ REAR EDGE OF SEAT PLANK, THEN FIELD LOCATE &amp; DRILL 7/16" Ø HOLE IN PLANK TYP. 4 PLACES ATTACH POST THROUGH END OF BLEACHER PLANK USING 3/8" x 1 1/2" CARRIAGE BOLTS &amp; 3/8" FLANGE NUTS SEAT PLANK TYP. SIDE GUARDRAIL POST FOOT PLANK</p> <p>N.T.S.</p>
<p>⑬ PANEL SPLICE DETAIL</p> <p>PIPE COUPLER 3/16" x 1/4" POP RIVET ABOVE FIRST PICKET (TYP.) VERTICAL PICKET PANEL PIPE COUPLER</p> <p>NOT TO SCALE</p>	<p>⑭ PANEL CLAMP DETAIL</p> <p>3/8" FLANGE NUT VERTICAL GUARDRAIL PIPE 3/8"x1 1/2" CARRIAGE BOLT - PANEL CLAMP (EACH CLAMP HAS 2 MATCHING HALVES) VERTICAL GUARDRAIL PIPE</p> <p>NOT TO SCALE</p>	<p>⑮ U-BOLT DETAIL</p> <p>GUARDRAIL PIPE 5/16" U-BOLT W/ 5/16" FLANGE NUT RAIL POST</p> <p>NOT TO SCALE</p>			

# Bleacher Specifications

## Non-Elevated Aluminum Angle Frame

### SECTION 13125

#### NON-ELEVATED ALUMINUM ANGLE FRAME BLEACHERS

##### PART 1 - GENERAL

##### 1.01 SECTION INCLUDES

- A. Design and fabrication of Non-Elevated angle frame bleachers

##### 1.02 QUALITY ASSURANCE

- A. Manufacturer: National Recreation Systems, Inc.  
1300-D Airport North Office Park, Ft. Wayne, IN, 46825
- B. Manufacturer Qualifications: Manufacturer must have a minimum of ten years experience in the design and manufacture of bleachers.
- C. Welders must conform to AWS standards.
- D. Source Quality Control: Mill Test Certification.
- E. Codes and Standards: 2012/2015 International Building Code / ICC 300 2012.

##### 1.03 WARRANTY

- A. Warranty shall guarantee bleachers to be free from defect in materials and workmanship for a period of 1 year under normal use. Warranty period shall begin on date of completion for projects installed by manufacturer, or its subcontractors, **OR** warranty period shall begin on date of final delivery on projects installed by others.
- B. Anodized finish of plank extrusions shall be covered by a **5 year** warranty against loss of structural strength or finish deterioration due to exposure to weather conditions or UV rays. Discoloration of mill finish aluminum due to galvanic reaction not covered.

##### 1.04 PRODUCT LIABILITY INSURANCE

- A. Product liability insurance is carried for the life of the product in the amount of \$ 2,000,000.

##### 1.05 ENGINEERING

- A. Engineering certifications and calculations by a Registered Professional Engineer will be provided upon request at an additional fee.

##### PART 2 – PRODUCTS

##### 2.01 ACCEPTABLE MANUFACTURER

- A. National Recreation Systems, Inc.

##### 2.02 DESIGN

- A. Applicable Codes:  
INTERNATIONAL BUILDING CODE (IBC), 2012/2015 EDITION / ICC 300 2012  
Except handicapped requirements
- B. Design Loads:
  - 1. Live Loads: Uniform loading - Structure = 100 psf  
Uniform loading - Seat and Foot plank = 120 plf
  - 2. Sway Loads: Perpendicular to seats = 10 plf  
Parallel to seats = 24 plf
  - 3. Guardrail Loads: Uniform vertical load = 100 plf  
Uniform horizontal load = 50 plf  
Concentrated horizontal load = 200 pounds
  - 4. \*Wind Loads: Basic design wind speed = 150 mph (exposure "B")

**\*Note: Bleacher must be anchored to meet wind loads above**

##### 2.03 NON-ELEVATED ANGLE FRAME BLEACHERS

- A. Quantity and Size: Shall consist of 1 unit(s) 5 rows high x 21 long.  
Net seating capacity per unit 58 (excluding aisles, based on 18" per seat).
- B. Framework: Prefabricated aluminum angle spaced at 6' - 0" intervals joined by means of aluminum angle cross bracing.
- C. Shop connections: Welded to meet AWS standards and local code requirements

- D. Joint Sleeve Assembly: Internal splices, where required shall be two per joint, and shall penetrate the joint a minimum of 8" in each direction and be riveted at one end only to allow for contraction and expansion.
- E. Rise and Depth Dimensions: 8" vertical rise and 24" tread depth, Seat height is 17" above its respective tread.
- F. Seats: Nominal 2" x 10" anodized aluminum with anodized end caps.
- G. Treads: Nominal two (2) 2" x 10" mill finish aluminum with anodized end caps on rows 2 & up.
- H. Risers: Nominal two (2) 1" x 6" mill finish aluminum with mill finish end caps on top row.  
Nominal 1" x 6" mill finish aluminum with mill finish end caps on all other rows.
- I. Aisles: Aisle footboards shall be of aluminum alloy 6063-T6 and be of mill finish with contrasting aisle markings. Three aisle stiffener angles shall be used to strengthen the aisle step. There shall be 1 aisle(s) 48" wide.
- J. Aisle Handrail: Anodized aluminum pipe with intermediate rail.
- K. Guardrail: Rails shall be anodized aluminum vertical picket panels attached to support members. Rear rail support member to be aluminum channel. Side rail support member to be aluminum angles. Standard AA-M10C223A31(204R1). Panels shall consist of 1-5/8" O.D. round tube and extruded aluminum 5/8" square. Panels shall attach to rail support members by means of 5/16" dia. u-bolts, lock washers, and nuts. Panels shall connect together using internal splice and rivet. End panels shall be terminated using aluminum elbows, and aluminum round tube mechanically fastened.

## 2.04 MATERIALS / FINISHES

- A. Framework:
  - 1. Aluminum: Structural fabrication with aluminum alloy 6061-T6 mill finish. Each frame shall be unit-welded, using metal inert gas method, under guidelines by the American Welding Society. After fabrication all steel is hot dipped galvanized to ASTM A-123 specifications.  
All crossbracing and horizontal bracing shall be aluminum alloy 6061-T6 mill finish.
- B. Extruded Aluminum:
  - 1. Seat planks: Aluminum alloy 6063-T6, clear anodized 204R1, AA-M10C22A31, Class II  
With a wall thickness nominally .078" for impact and deformation resistance.
  - 2. Tread and Riser Planks: Aluminum alloy 6063-T6, mill finish. With a wall thickness nominally .078" for impact and deformation resistance.
  - 3. Guardrail Pipe: 1-5/8 OD schedule 40 aluminum alloy 6105-T5, clear anodized 204R1, AA-M10C22A31, Class II.
- C. Accessories:
  - 1. Channel End Caps: Aluminum alloy 6063-T6, clear anodized 204R1, AA-M10C22A31, Class II.
  - 2. Hardware: Bolts and Nuts shall be hot dipped galvanized.
  - 3. Hold Down Clip Assembly: Aluminum alloy 6063-T6 mill finish.
  - 4. Joint Sleeve Assembly: Aluminum alloy 6061-T6, mill finish.

## PART 3 – EXECUTION

### 3.01 INSTALLATION

- A. Install bleacher unit in accordance with manufacturer written instructions and shop drawings.

**Note: Building codes may vary from site to site. The customer is responsible for verification of local code requirements.**