



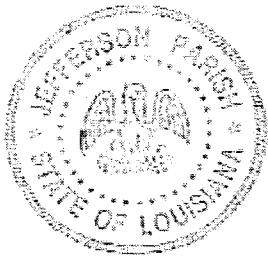
CENTRALBIDDING
FROM CENTRAL AUCTION HOUSE

**5000128399 - ONE TIME PURCHASE OF VALVES FOR EASTBANK
WAREHOUSE**

Jefferson Parish Government

Project documents obtained from www.CentralBidding.com

08-Oct-2019 03:22:33 PM



JEFFERSON PARISH

Department of Purchasing

Michael S. Yenni
Parish President

Renny Simno
Director

June 2019

CHANGES TO JEFFERSON PARISH BIDDING PROCEDURES

The Jefferson Parish Purchasing Department would like to make vendors aware of the following changes:

DEDUCTIBLES: The Parish Attorney with concurrence of the Director of Risk Management have waived the deductible section of the Terms and Conditions for all Invitations to Bid, until further notice.

PROTESTS: Only those vendors that submit bids in response to a solicitation may protest any element of the procurement, in writing to the Director of the Purchasing Department. Written protest must be received within 48 hours of the release of the bid tabulation by the Purchasing Department. After consultation, the Parish Attorney's Office will then respond to protests in writing. (For more information, please see Chapter 2, Article VII, Division 2, Sec. 2-914.1 of the Jefferson Parish Code of Ordinances.)

Please contact the Jefferson Parish Purchasing Department at 504-364-2678 if you have any questions or need assistance.



Bid Number 50 – 128399

ONE TIME PURCHASE OF VALVES
FOR EASTBANK WAREHOUSE

10/10/2019 at 11:00am

ATTENTION VENDORS!!!

Please review all pages and respond accordingly, complying with all provisions in the technical specifications and Jefferson Parish Instructions for Bidders and General Terms and Conditions. All bids must be received in the Purchasing Department by the bid due date and time.

Jefferson Parish Purchasing Department
200 Derbigny Street
General Government Building, Suite 4400
Gretna, LA 70053
Buyer Name: Brenda Bellow
Buyer Email: BBellow@jeffparish.net
Buyer Phone: (504)364-2683

DATE: 10/07/2019

INVITATION TO BID
THIS IS NOT AN ORDER

Page: 1

BID NO.: 50-00128399

JEFFERSON PARISH
PURCHASING DEPARTMENT
P.O. BOX 9
GRETN, LA. 70054-0009
504-364-2678

VENDOR: 27118 BLANK BID COPY VENDOR

BUYER: BBELLOW@jeffparish.net

Bids will be received until 11:00 AM, 10/10/2019 via online at www.jeffparishbids.net or by hand delivery, USPS mail or other courier service to Purchasing Department, 200 Derbigny Street (General Government Building), Suite 4400, Gretna, LA 70053. For convenience, bidders may also submit bids in the East Bank Purchasing Department, Suite 404, Jefferson Parish Joseph S. Yenni Building, 1221 Elmwood Park Blvd., Jefferson LA 70123. However, if submitting bids on the day of bid opening, bidders must submit at the West Bank location only.

All bids submitted are subject to these instructions and general conditions and any special conditions and specifications contained herein, all of which are made part of this bid proposal reference. By submitting a bid, vendor agrees to comply with all provisions of Louisiana Law, as well be in compliance with the Jefferson Parish Code of Ordinances, Louisiana Code of Ethics, applicable Jefferson Parish ethical standards and Jefferson Parish Resolution No. 113646 and/or Resolution No. 113647. A copy of these resolutions may be obtained from the Office of the Parish Clerk, Suite 6700, Jefferson Parish General Government Building, 200 Derbigny Street, Gretna, LA 70053. You may also obtain a copy by visiting the Purchasing Department webpage at purchasing.jeffparish.net and clicking on On-line forms.

All vendors submitting bids should register as a Jefferson Parish vendor if not already yet registered. Registration forms may be downloaded from <http://purchasing.jeffparish.net> and by clicking on Vendor Information. Current W-9 forms with respective Tax Identification numbers and vendor applications may be submitted at any time; however, if your company is not registered and/or a current W-9 form is not on file, vendor registration is mandatory. Further, a current W-9 form and respective Tax Identification number must be supplied upon contract execution, should you be awarded a contract and/or issued purchase order. Failure to do so may result in delay of payment.

As per LSA-RS 47:301 et seq., all governmental bodies are excluded from payment of sales taxes to any Louisiana taxing body. Quotations shall be based on F.O.B. Delivered, anywhere within the Parish as designated by the Purchasing Department. **JEFFERSON PARISH WILL ACCEPT ONE BID ONLY FROM EACH VENDOR.** Items bid must meet specifications. JEFFERSON PARISH will accept one price for each item unless otherwise indicated. Two or more prices for one item will result in bid rejection. Bidders are required to complete, sign and return the bid form and/or complete and return the associated line item pricing forms as indicated. The price quoted for work shall be stated in figures. In the event there is a difference in unit prices and totals, the unit prices shall prevail.

JEFFERSON PARISH reserves the right to award contracts or place orders on a lump sum or individual item basis, or such combination, as shall in its judgment be in the best interest of JEFFERSON PARISH. Every contract or order shall be awarded to the **LOWEST RESPONSIVE and RESPONSIBLE BIDDER**, taking into consideration the **CONFORMITY WITH THE SPECIFICATIONS and the DELIVERY AND/OR COMPLETION DATE**.

PROTESTS: Only those vendors that submit bids in response to this solicitation may protest any element of the procurement, in writing to the Director of the Purchasing Department. Written protest must be received within 48 hours of the release of the bid tabulation by the Purchasing Department. After consultation, the Parish Attorney's Office will then respond to protests in writing. (For more information, please see Chapter 2, Article VII, Division 2, Sec 2.914.1 of the Jefferson Parish Code of Ordinances.)

JEFFERSON PARISH reserves the right to cancel all or any part of an order if not shipped promptly. No charges will be allowed for parking or cartage unless specified in the quotation. The order must not be filled at a higher price than quoted. JEFFERSON PARISH reserves the right to cancel at any time and for any reason by issuing a THIRTY (30) day written notice to the contractor.

JEFFERSON PARISH requires all products to be new (current) and all work must be performed according to standard practices for the project. Unless otherwise specified, no aftermarket parts will be accepted. Unless otherwise specified, all workmanship and materials must have at least one (1) year guaranty, in writing, from the date of delivery and/or acceptance of the project. Any deviations or alteration from the specifications must be indicated on the bid form for each item and upon request, product data for same must be submitted by the time specified by the Purchasing Department.

If this bid requires a pre-bid conference (see Additional Requirements section), bidders are advised that such conference will be held to allow bidders the opportunity to identify any discrepancies in the bid specifications and seek further clarification regarding instructions. The Purchasing Department will issue a written response to bidders' questions in the form of an Addendum.

All formal Addenda require written acknowledgment on the bid form by the bidder. Failure to acknowledge an Addendum on the bid form shall cause the bid to be rejected; JEFFERSON PARISH reserves the right to award bid to next lowest responsive and responsible bidder in this event.

USE OF BRAND NAMES AND STOCK NUMBERS: Where brand names and stock numbers are specified, it is for the purpose of establishing certain minimum standards of quality. Bids may be submitted for products of equal quality, provided brand names and stock numbers are specified. Complete product data may be required prior to award.

Quantities listed are for bidding purposes only. Actual requirements may be more or less than quantities listed.

Bidders are not to exclude from participation in, deny the benefits of, or subject to discrimination under any program or activity, any person in the United States on the grounds of race, color, national origin, or sex; not discriminate on the basis of age under the Age Discrimination Act of 1975, or with respect to an otherwise qualified handicapped individual as provided in Section 504 of the Rehabilitation Act of 1973, or on the basis of religion, except that any exemption from such prohibition against discrimination on the basis of religion as provided in the Civil Rights Act of 1964, or Title VI and VII of the Act of April 11, 1968, shall also apply. This assurance includes compliance with the administrative requirements of the Revenue Sharing final handicapped discrimination provisions contained in Section 51.55 (c), (d), (e), and (k)(5) of the Regulations. New construction or renovation projects must comply with Section 504 of the 1973 Rehabilitation Act, as amended, in accordance with the American National Standard Institute's specifications (ANSI A17.1-1981).

Jefferson Parish and its partners as the recipients of federal funds are fully committed to awarding a contract(s) to firm(s) that will provide high quality services and that are dedicated to diversity and to containing costs. Thus, Jefferson Parish strongly encourages the involvement of minority and/or woman-owned business enterprises (DBE's, including MBE's, WBE's and SBE's) to stimulate participation in procurement and assistance programs.

INSTRUCTIONS FOR BIDDERS AND GENERAL CONDITIONS

IN ACCORDANCE WITH STATE REGULATIONS JEFFERSON PARISH OFFERS ELECTRONIC PROCUREMENT TO ALL VENDORS

This electronic procurement system allows vendors the convenience of reviewing and submitting bids online. This is a secure site and authorized personnel have limited read access only. Bidders are encouraged to submit electronically using this free service; while the website accepts various file types, one single PDF file containing all appropriate and required bid documents is preferred. Bidders submitting uploaded images of bid responses are solely responsible for clarity. If uploaded images/documents are not legible, then bidder's submission will be rejected. Please note all requirements contained in this bid package for electronic bid submission.

Please visit our E-Procurement Page at www.jeffparishbids.net to register and view Jefferson Parish solicitations. For more information, please visit the Purchasing Department page at <http://purchasing.jeffparish.net>.

ADDITIONAL REQUIREMENTS FOR THIS BID

PLEASE MATCH THE NUMBERS PRINTED IN THIS BOX WITH THE
CORRESPONDING INSTRUCTIONS BELOW.

13

1. All bidders must attend the MANDATORY pre-bid conference and will be required to sign in and out as evidence of attendance. In accordance with LSA R.S. 38:2212(I), all prospective bidders shall be present at the beginning of the MANDATORY pre-bid conference and shall remain in attendance for the duration of the conference. Any prospective bidder who fails to attend the conference or remain for the duration shall be prohibited from submitting a bid for the project.
2. Attendance to this pre-bid conference is optional. However, failure to attend the pre-bid conference shall not relieve the bidder of responsibility for information discussed at the conference. Furthermore, failure to attend the pre-bid conference and inspection does not relieve the successful bidder from the necessity of furnishing materials or performing any work that may be required to complete the work in accordance with the specification with no additional cost to the owner.
3. Contractor must hold current applicable JEFFERSON PARISH licenses with the Department of Inspection and Code Enforcement. Contractor shall obtain any and all permits required by the JEFFERSON PARISH Department of Inspection and Code Enforcement. The contractor shall be responsible for the payment of these permits. All permits must be obtained prior to the start of the project. Contractor must also hold any and all applicable Federal and State licenses. Contractor shall be responsible for the payment of these permits and shall obtain them prior to the start of the project.
4. A LA State Contractor's License will be required in accordance with LSA R.S. 37-2150 et. seq. and such license number will be shown on the outside of the bid envelope. Failure to comply will cause the bid to be rejected. Additionally if submitting the bid electronically, then the license number must be entered in the appropriate field in the Electronic Procurement system. Failure to comply will cause the bid to be rejected.
5. It is the bidder's responsibility to visit the job site and evaluate the job before submitting a bid.
6. Job site must be clean and free of all litter and debris daily and upon completion of the contract. Passageways must be kept clean and free of material, equipment, and debris at all times. Flammable material must be removed from the job site daily because storage will not be permitted on the premises. Precautions must be exercised at all times to safeguard the welfare of JEFFERSON PARISH and the general public.

INSTRUCTIONS FOR BIDDERS AND GENERAL CONDITIONS

7. **PUBLIC WORKS BIDS:** All awards for public works in excess of \$5,000.00 will be reduced to a formal contract which shall be recorded at the contractor's expense with the Clerk of Court and Ex-Officio Recorder of Mortgages for the Parish of Jefferson. A price list of recordation costs may be obtained from the Clerk of Court and Ex-Officio Recorder of Mortgages for the Parish of Jefferson. All awards in excess of \$25,000.00 will require both a performance and a payment bond. Unless otherwise stated in the bid specifications, the performance bond requirements shall be 100% of the contract price. Unless otherwise state in the bid specifications, the payment bond requirements shall be 100% of the contract price. Both bonds shall be supplied at the signing of the contract.
8. **NON-PUBLIC WORKS BIDS:** A performance bond will be required for this bid. The amount of the bond will be 100% of the contract price unless otherwise indicated in the specifications. The performance bond shall be supplied at the signing of the contract.
9. **NON-PUBLIC WORKS BIDS:** A payment bond will be required for this bid. The amount of the bond will be 100% of the contract price unless otherwise indicated in the specifications. The payment bond shall be supplied at the signing of the contract.
10. All bidders must comply with the requirements stated in the attached "Standard Insurance Requirements" sheet attached to this bid solicitation. Prior to contract executions/purchase order issuance, the successful bidder will be required to provide final insurance certificates which shall name Jefferson Parish as an additional insured in accordance with the instructions in the aforementioned "Standard Insurance Requirements" sheet.
11. A bid bond will be required with bid submission in the amount of 5% of the total bid, unless otherwise stated in the bid specifications. Acceptable forms shall be limited to cashier's check, certified check, or surety bid bond. All sureties must be in original format (no copies). If submitting a bid online, vendors must submit an electronic bid bond through the respective online clearinghouse bond management system(s) as indicated in the electronic bid solicitation on Central Auction House. No scanned paper copies of any bid bond will be accepted as part of the electronic bid submission.
12. This is a requirements contract to be provided on an as needed basis. JEFFERSON PARISH makes no representations on warranties with regard to minimum guaranteed quantities unless otherwise stated in the bid specifications.
13. Freight charges should be included in total cost when quoting. If not quoted FOB DELIVERED, freight must be quoted as a separate item. Bid may be rejected if not quoted FOB DELIVERED or if freight charges are not indicated on bid form.
14. **PUBLIC WORKS BIDS - Completed, Signed and Properly Notarized Affidavits Required;** This applies to all solicitations for construction, alteration or demolition of public buildings or projects, in conformity with the provisions contained in LSA-RS 38:2212.9, LSA-RS 38:2212.10, LSA-RS 38:2224, and Sec 2-923.1 of the Jefferson Parish Code of Ordinances. For bidding purposes, all bidders must submit with bid submission COMPLETED, SIGNED and PROPERLY NOTARIZED Affidavits, including: Non-Conviction Affidavit, Non-Collusion Affidavit, Campaign Contribution Affidavit, Debt Disclosures Affidavit and E-Verify Affidavit. For the convenience of vendors, all affidavits have been combined into one form entitled PUBLIC WORKS BID AFFIDAVIT. This affidavit must be submitted in its original format, and without material alteration, in order to be compliant and for the bid to be considered responsive. A scanned copy of the completed, signed and properly notarized affidavit may be submitted with the bid, however, the successful bidder must submit the original affidavit in its original format and without material alteration upon contract execution. Failure to comply will result in the bid submission being rejected as non-responsive. The Parish reserves the right to award bid to the next lowest responsive and responsible bidder in this event.
15. **NON PUBLIC WORK BIDS - Completed, Signed and Properly Notarized Affidavits Required** in conformity with the provisions contained in LSA - RS 38:2224 and Sec 2-923.1 of the Jefferson Parish Code of Ordinances. For bidding purposes, all bidders must submit with bid submission COMPLETED, SIGNED and PROPERLY NOTARIZED Affidavits, including: Non-Collusion Affidavit, Debt Disclosures Affidavit and Campaign Contribution Affidavit. For the convenience of vendors, all affidavits have been combined into one form entitled NON PUBLIC WORKS BID AFFIDAVIT. This affidavit must be submitted in its original format, and without material alteration, in order to be compliant and for the bid to be considered responsive. A scanned copy of the completed, signed and properly notarized affidavit may be submitted with the bid, however, the successful bidder must submit the original affidavit in its original format and without material alteration upon contract execution. Failure to comply will result in the bid submission being rejected as non-responsive. The Parish reserves the right to award bid to the next lowest responsive and responsible bidder in this event.
16. The ensuing contract for this bid solicitation may be eligible for FEMA reimbursement and/or Federal funding/reimbursement. As such, the referenced appendix will be applicable accordingly and shall be considered a part of the bid documents. All applicable certifications must be duly completed, signed and submitted with bid submission. Failure to submit applicable certifications with bid submission will result in bid rejection.

It shall be the duty of every parish officer, employee, department, agency, special district, board, and commission; and the duty of every contractor, subcontractor, and licensee of the parish, and the duty of every applicant for certification of eligibility for a parish contract or program, to cooperate with the Inspector General in any investigation, audit, inspection, performance review, or hearing pursuant to Jefferson Parish Code of Ordinances Section 2-155.10(19). By submitting a bid, vendor acknowledges this and will abide by all provisions of the referenced Jefferson Parish Code of Ordinances.

DATE: 10/07/2019

INVITATION TO BID
THIS IS NOT AN ORDER

Page: 4

BID NO.: 50-00128399

JEFFERSON PARISH

PURCHASING DEPARTMENT
P.O. BOX 9
GRETN, LA. 70054-0009
504-364-2678

VENDOR: 27118 BLANK BID COPY VENDOR

BUYER: BBELLOW

As per LSA-RS 47:301 et seq., all governmental bodies are excluded from payment of sales taxes to any Louisiana taxing body. Quotations shall be based on F.O.B. Agency warehouse or jobsite, anywhere within the Parish as designated by the Purchasing Department.

JEFFERSON PARISH reserves the right to cancel all or any part of an order if not shipped promptly. No charges will be allowed for parking or cartage unless specified in quotation. The order must not be filled at a higher price than quoted. JEFFERSON PARISH reserves the right to cancel at any time and for any reason by issuing a THIRTY (30) day written notice to the contractor.

JEFFERSON PARISH is expecting all products to be new and all work to be done in workman-like manner, according to standard practices. Any deviations or alteration from the specifications must be indicated on the bid form for each item and upon request, product data for same must be submitted by the time specified by the Purchasing Department.

DELIVERY: FOB JEFFERSON PARISH

INDICATE DELIVERY DATE ON EQUIPMENT AND SUPPLIES

4-6 WEEKS

INDICATE STARTING TIME (IN DAYS) FOR CONSTRUCTION WORK

INDICATE COMPLETION TIME (IN DAYS) FOR CONSTRUCTION WORK

In the event that addenda are issued with this bid, bidders MUST acknowledge all addenda on the bid form. Bidder must acknowledge receipt of an addendum on the bid form as indicated. Failure to acknowledge any addendum on the bid form will result in bid rejection.

Acknowledge Receipt of Addenda: NUMBER: _____

NUMBER: _____

NUMBER: _____

NUMBER: _____

LOUISIANA CONTRACTOR'S LICENSE NO.: (if applicable) _____

***** ALL BIDDERS MUST COMPLETE SECTION BELOW *****

FIRM NAME:

Coburns Supply

SIGNATURE:

(Must be signed here)

Mark Tate

TITLE:

Outside Sales

PRINT OR TYPE NAME:

Mark Tate

ADDRESS:

1849 Commercial Drive

CITY, STATE:

Harvey, LA

ZIP:

70058

TELEPHONE:

(225) 202-7808

FAX:

(504) 348-1095

EMAIL ADDRESS:

mtate@coburns.com

TOTAL PRICE OF ALL BID ITEMS: \$ 7016.60

INVITATION TO BID FROM JEFFERSON PARISH - continued

BID NO.: 50-00128399

SEALED BID

ITEM NUMBER	QUANTITY	U/M	DESCRIPTION OF ARTICLES	UNIT PRICE QUOTED	TOTALS
1	6.00	EA	ONE TIME PURCHASE OF VALVES FOR THE EASTBANK WAREHOUSE 0001 - Valve, check, wafer, 6 inch, ductile iron body, external spring and lever, stainless steel hardware, 2-3/4 inch face to face, ansi class 150, ansi B16.1, Enduro-Bond, KF Eagle Series 18 no. 7394-126K419191 Milliken 700 Milliken 700 (0621930)	900.00	5400.00
2	2.00	EA	0002 - Valve, air release, 4 in inlet, 1 in outlet, 17-9/16 in H x 9-1/2 in W, Val-Matic no. 49A.3 (0674620) Crispin SL40 Please have items shipped to: Eastbank Warehouse Attention: Curtis McFarland 4901 Jefferson Hwy Suite C Jefferson, LA 70121	808.30	1616.60

Wafer Check Valve (Figure 700): Technical Specifications

General

Check valve shall be of the short face-to-face type with external spring to ensure tight shutoff. The pressure rating shall be 200 psi.

Valve Bodies

Valve bodies shall be of ASTM A-126 Class B cast iron. Disc and disc arm shall be of ASTM A-743 Grade CF8M stainless steel.

Valve Shaft

The valve shaft shall be manufactured of ASTM A-276 Grade 316 stainless steel and supported by two (2) SAE 660 bronze bearings. Shaft sealing shall be accomplished by multiple rings of braided PTFE Teflon rings. Packing shall be utilized on each side of the valve.

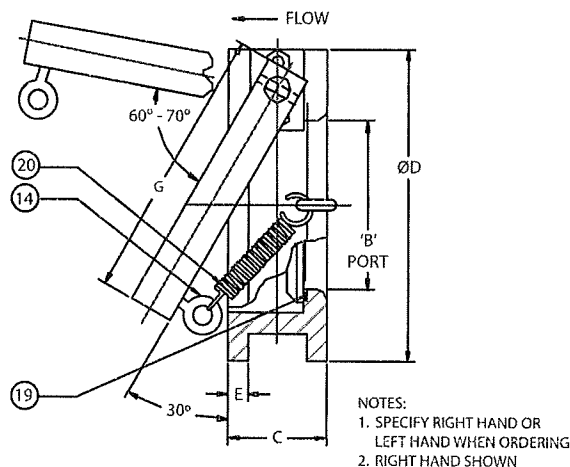
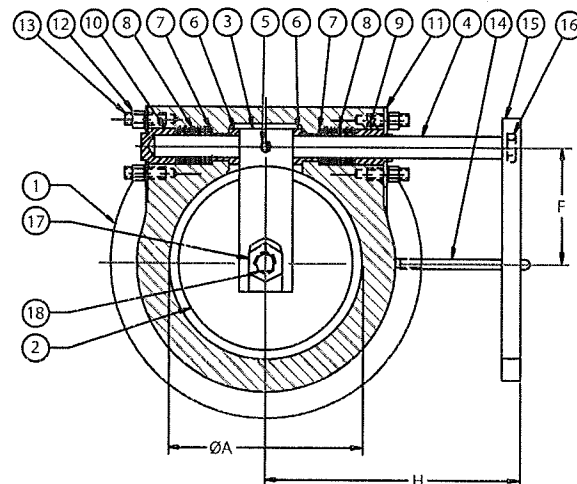
Arm Assembly

The design of the valve shall be such that spring/arm assembly can be field changed from right to left. The closure spring shall be manufactured of ASTM A-228 spring steel. The spring arm shall be constructed of carbon steel ASTM A-36 and designed to provide disc position indication. The spring arm shall be capable of overriding the spring action for use as an override lever.

Valve Seat

The valve seat shall be of specified O-ring material and retained in a dovetail groove in the valve body.

20	1	SPRING	STEEL ASTM A228
19	1	O-RING SEAT	AS SPECIFIED
18	1	THREADED ROD	316 S.S.
17	1	NUT	316 S.S.
16	1	SPRING PIN	STEEL
15	1	SPRING ARM	STEEL ASTM A36
14	2	EYEBOLT	STEEL NP
13	4	THREADED NUT	STEEL NP
12	4	NUT	STEEL NP
11	2	PLATE	STEEL ASTM A36
10	1	BLIND GLAND	BRONZE SAE 660
9	1	PACKING GLAND	BRONZE SAE 660
8	AR	PACKING	P.T.F.E.
7	2	WASHER	BRONZE SAE 660
6	2	BUSHING	BRONZE SAE 660
5	1	S.H. CAP SCREW	316 S.S.
4	1	SHAFT	316 S.S.
3	1	DISC ARM	ASTM A-743 CF8M
2	1	DISC	ASTM A-743 CF8M
1	1	BODY	A126 CL.B IRON
ITEM	QTY.	COMPONENT	MATERIAL/SPEC.

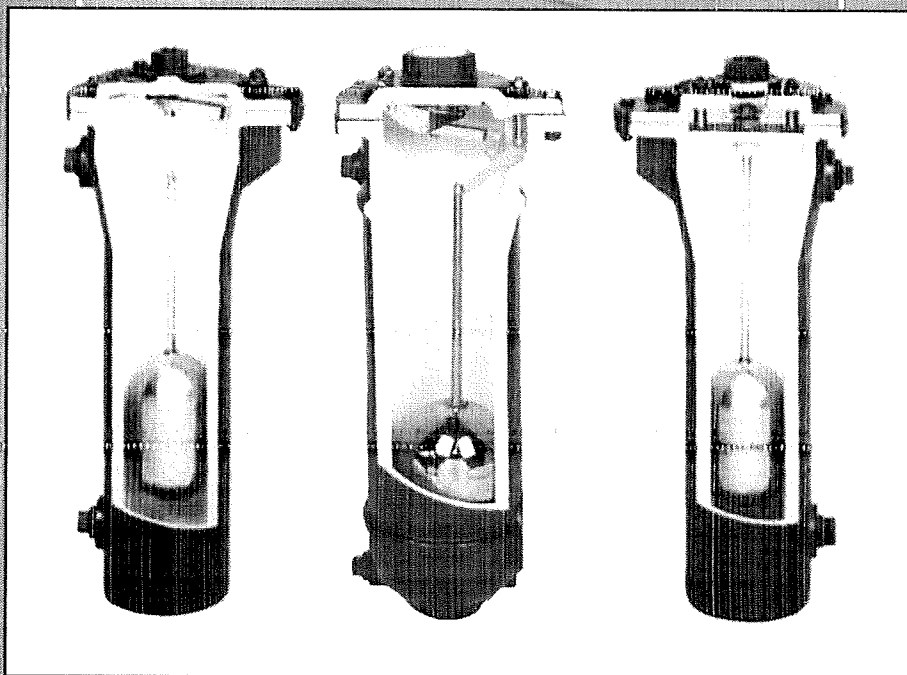


NOTES:
1. SPECIFY RIGHT HAND OR LEFT HAND WHEN ORDERING
2. RIGHT HAND SHOWN

SIZE	A	B	C	D	E	F	G	H	WT. LB.
3	2.63	2.06	3.75	5.25	0.50	2.13	3.75	5.00	18
4	3.63	3.03	2.25	6.88	0.44	2.13	7.00	6.00	13
6	5.44	4.75	2.75	8.75	0.56	3.25	7.25	7.13	27
8	7.25	6.44	2.88	11.00	0.63	4.00	8.75	8.06	42
10	8.50	7.63	3.13	13.13	0.88	4.88	11.25	9.50	63
12	10.44	9.50	3.50	16.13	0.88	5.88	13.25	13.88	96

The S & US Series Sewage Air Valves

**Helps Prevent System Shutdown • Standard and
High Capacity Series Available • Series Includes
Air & Vacuum and Pressure Combination Units**



Crispin
Since 1905



SERIES

Pressure Sewer Valve

Valve Function

- Exhausts air and gas accumulation to promote system performance and efficiency
- Helps prevent system shut downs

Features

- Standard, high capacity, and short body series available
- Optional Backflush attachment
- Available in sizes 2" thru 4"

All CRISPIN Air and Vacuum Valves have standard Buna-N seating material with a Shore durometer of 70-80. This standard seat allows drip tight closure beyond 4-5 PSIG. Occasionally, a gravity system operates at pressures less than 10 PSIG. These applications require a soft seating material which will prevent leakage down to 2 PSIG. This soft seating material should not be applied to systems with operating pressures greater than 50 PSIG, or high pressure leaks may occur around the seat.

Stainless Steel Trim Standard

Air can accumulate in a sewage collection system that is under pressure from a number of sources. The nature of sewage is such that gas can also be generated and accumulate at the high points in the system. The gas and air accumulation need to be exhausted to promote system performance and efficiency, and help prevent system shut downs.

The CRISPIN Pressure Sewer Air Release Valves provide a range of air release orifices through 1/2" in diameter. Correct valve sizing can be determined by referring to the sizing section of the CRISPIN Catalog.

The CRISPIN "standard capacity" Pressure Sewer Valve weighs only 49 lbs., as compared to the 93 lbs. weight of our standard high capacity series. The light body is designed for a maximum of 300 PSIG. cold water working pressure. The "standard capacity" Pressure Sewer Air Release Valves are available with two orifice sizes, as indicated below. Our "high capacity" Sewer Air Release Valves are supplied with standard stainless steel trim. The "high capacity" pressure sewer air release valves are available with the orifice sizes indicated on page 11 of this section, and are selected according to the operating pressure of the system. If the system dictates specific air release requirements, then the sewer valve should be sized and selected accordingly.

Standard Capacity Series

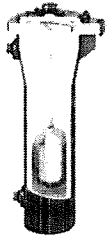
Model	Inlet NPT	Orifice	Height	Height w/Back Flush*	Width	Width w/Back Flush*	Wt.	Wt. w/Back Flush*
SL20*	2"	1/4" @ 150 psi	21 1/2"	25 1/4"	9 11/16"	11 1/4"	49	60
SL30*	3"		21 1/2"	27 1/4"	9 11/16"	11 1/4"	49	66
SL40*	4"	1/8" @ 300 psi	21 1/2"	27 5/8"	9 11/16"	11 1/4"	49	78

* Add a "B" to the end of model number if a backflush attachment is required.

*Other Working Pressures May Be Obtained By Re-sizing Orifice Diameter.

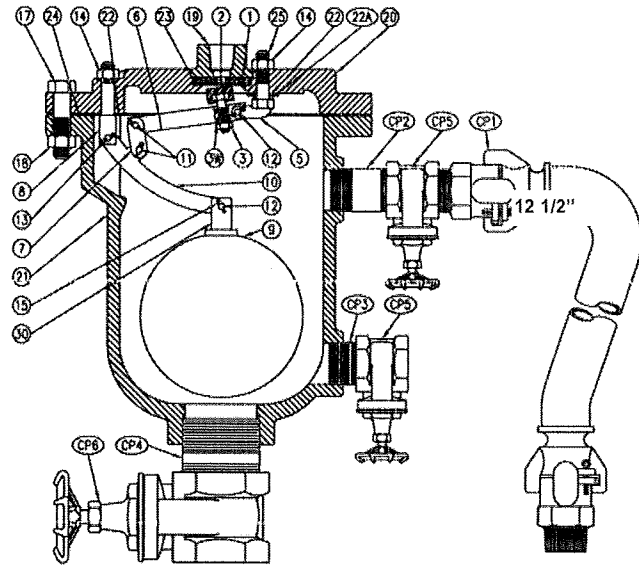
Working Pressure

ORIFICE DIAMETER	MAX. WORKING PRESSURE
1/2"	150 lbs.
7/16"	200 lbs.
3/8"	250 lbs.
1/4"	300 lbs.



CRISPIN SERIES

Pressure Sewer Valve



Parts List

PART #	ITEM	MATERIAL
1	Seat	PVC
2	Valve Plunger	Buna-N-Rubber
3	Nut	Stainless Steel
5	Valve Fulcrum	Stainless Steel
6	Valve Lever	Stainless Steel
7	Link	Stainless Steel
8	Ball Fulcrum	Stainless Steel
9	Ball Float	Stainless Steel
10	Ball Lever	Stainless Steel
11	Bearing Pin	Stainless Steel
12	Bearing Pin	Stainless Steel
13	Bearing Pin	Stainless Steel
14	Nut	Steel
15	Cotter Pin	Stainless Steel
17	Bolt	Steel
18	Nut	Steel
19	Top	Cast Iron
20	Flange	Cast Iron
21	Body-Screw Inlet	Cast Iron
22	Fulcrum Washer	Fibre
22A	Fulcrum Washer	Fibre
23	Seat Gasket	Buna-N-Rubber
24	Flange Gasket	Armstrong
25	Bolt	Stainless Steel
30	Float Rod	Stainless Steel
40	Flush Plug (not shown)	Stainless Steel
3W	Lockwasher	Stainless Steel
2B	Nipple	Steel
3B	Nipple	Steel
4B	Nipple	Steel
6B	1" Gate Valve	Brass
7B	2" Gate Valve	Brass
1B	Hose Assembly	S/S, CAD. PLT. Rubber

Short Pressure Sewer Series

MODEL	INLET	OUTLET	HEIGHT
S20S	2" screwed	1/2" screwed	12 1/2"
S20SB	2" screwed	1/2" screwed	16 1/2"

The CRISPIN Short Sewer Air Release Valve offers the same function as both the Standard Air and Vacuum and Pressure Air Release Sewer Valves. The shorter height allows the valve to be used where height restrictions are a problem.

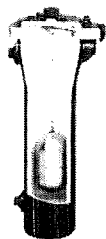
*All Crispin valves are hydrostatically tested at 150% of their maximum working pressure. For ease of maintenance, some of the parts are provided as kits or assemblies.

Backflush is optional at customer's request.

Flush plugs are used when a backflush is not requested.

High Capacity Series

Model	Inlet NPT	Orifice	Height	Width	Height w/Back Flush	Width w/Back Flush	Wt.	Wt. w/Back Flush
S20	2" NPT	1/2"	25 1/2"	10 1/16"	29 1/4"	13 3/4"	93	105
S21	2" 125# Flg.	1/2"	26 7/16"	10 1/16"	34 1/4"	13 3/4"	106	136
S30	3" NPT	1/2"	25 1/2"	10 1/16"	31 1/4"	13 3/4"	95	117
S31	3" 125# Flg.	1/2"	27 3/16"	10 1/16"	35 3/16"	13 3/4"	110	163
S40	4" NPT	1/2"	25 1/2"	10 1/16"	31 1/2"	13 3/4"	95	126
S41	4" 125# Flg.	1/2"	27 3/8"	10 1/16"	36 3/8"	13 3/4"	116	193
S61	6" 125# Flg.	1/2"	27 7/16"	10 1/16"	37 15/16"	13 3/4"	125	258



Submittal Sheet for Crispin SL Series

2"-4" Pressure Sewer Valve (stan.) (1

Manufactured in compliance with ANSI/AWWA C512

Date: October, 2001

Specifications

The Pressure Sewer Air Release Valve(s) shall be installed at high points in the line, or at points selected by the engineer, to vent the accumulation of air and other gases with the line under pressure.

The valve(s) shall be of the long body design and shall have a _____" orifice with an adjustable Buna-N rubber valve and a sealing face of PVC. The valve(s) shall operate at _____ PSIG, and be capable of passing _____ SCFM of air.

They shall also be _____" NPT screwed or ANSI Class (125, 250) flanged connection. They shall have a cast iron body, top and flange, where required, and a stainless steel trim.

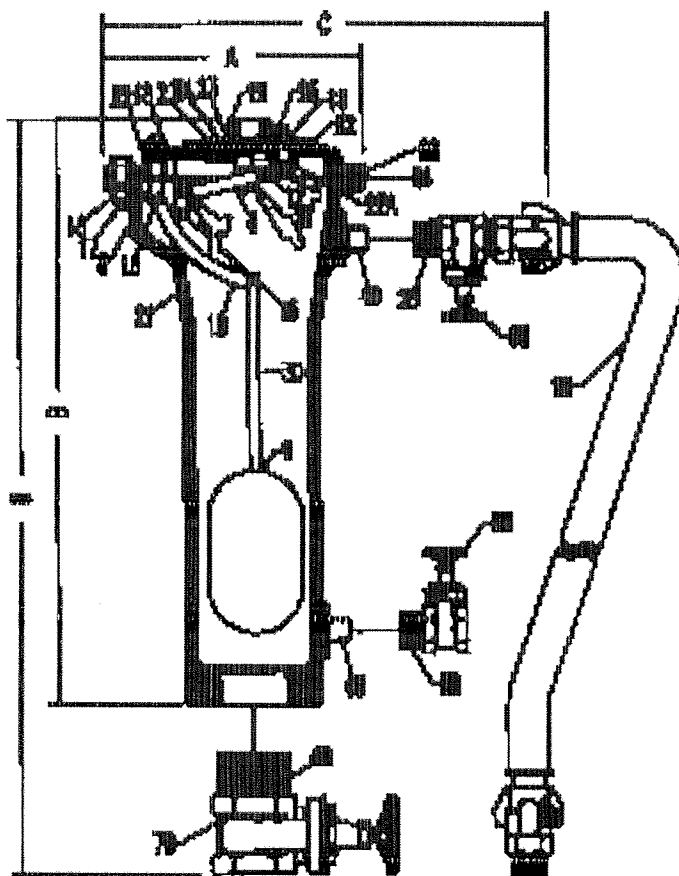
The valve(s) shall be Crispin Model _____ Pressure Sewer Valve(s) as manufactured by Crispin-Multiplex Manufacturing Co., Berwick, PA.

Option: The valve(s) shall be supplied with back flushing attachments so that the interior body can be flushed periodically for proper operation.

Option: Where pressures are greater than 300 PSIG, the valve(s) shall be ANSI Class _____ flanged inlet connection, and shall have a (steel, stainless steel, or ductile iron) body, top and inlet flange.

Standard operating pressure for Crispin Air Valves is 20 to 150 PSIG. Please check one of the following if your operating needs differ:

- _____ 2 to 40 PSIG
- _____ 151 to 300 PSIG



Orifice Options

DIAMETER	MAX. PRESSURE	DISCHARGE RATE
1/4	150 PSIG	105 SCFM
1/8	300 PSIG	50.26 SCFM

All Crispin valves are hydrostatically tested at 150% of their maximum working pressure

Manufactured in compliance with ANSI/AWWA C512

Date: October, 2001

Parts List

ITEM	DESCRIPTION	MATERIAL	ASTM
*1N	SEAT	PVC	1784
*1P	SEAT	STAINLESS STEEL	A582
2	VALVE PLUNGER	BUNA-N & STAINLESS STEEL	D2000/A193
3	NUT	STAINLESS STEEL	A194
3W	LOCKWASHER	STAINLESS STEEL	A240
5	VALVE FULCRUM	STAINLESS STEEL	A240
6	VALVE LEVER	STAINLESS STEEL	A582
7	LINK	STAINLESS STEEL	A240
8	BALL FULCRUM	STAINLESS STEEL	A582
9	BALL FLOAT	STAINLESS STEEL	A240
10	BALL LEVER	STAINLESS STEEL	A240
11	BEARING PIN	STAINLESS STEEL	A582
12	BEARING PIN	STAINLESS STEEL	A582
13	BEARING PIN	STAINLESS STEEL	A582
15	COTTER PIN	STAINLESS STEEL	A240
17	BOLT	STEEL	A307
18	NUT	STEEL	A563
19	TOP	CAST IRON	A126 CL.B
20	FLANGE	CAST IRON	A126 CL.B
21	BODY	CAST IRON	A126 CL.B
22	FULCRUM WASHER	FIBER	D710
22A	FULCRUM WASHER	FIBER	D710
23	SEAT GASKET	BUNA-N RUBBER	D2000
24	FLANGE GASKET	ARMSTRONG N-8092	N/A
25	BOLT	STAINLESS STEEL	A193
30	FLOAT ROD	STAINLESS STEEL	A582
*40	PLUG	CAST IRON	A126 CL.B

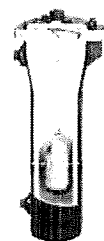
Optional Back Flush Components

*1B	HOSE ASSEMBLY	CAD. PLT. STEEL & RUBBER	N/A
*2B	1" X CL. NIPPLE	STEEL	A312
*4B	3" X CL. NIPPLE	STEEL	A312
*6B	1" GATE VALVE	BRASS	N/A
*7B	3" GATE VALVE	BRASS	N/A

Size Specifications

MODEL	INLET SIZE	OUTLET SIZE	A	B	C	D	WHT.
SL20	2" NPT	1/2" NPT	9.69	21.50			49
SL20B	2" NPT	1/2" NPT			11.25	25.25	60
SL30	3" NPT	1/2" NPT	9.69	21.50			49
SL30B	3" NPT	1/2" NPT			11.25	27.25	66
SL40	4" NPT	1/2" NPT	9.69	21.50			49
SL40B	4" NPT	1/2" NPT			11.25	27.63	78

(*) Parts are interchangeable and optional at customer's request.



SUBMITTAL SHEET FOR SL SERIES